



SEMMELWEIS  
UNIVERSITY 1769



Asociación Europea de Lenguas para Fines Específicos

22<sup>ND</sup>

AELFE

HYBRID

CONFERENCE

CHALLENGES OF LSP TEACHING AND RESEARCH  
IN THE ERA OF THE LANGUAGE TECHNOLOGICAL  
REVOLUTION

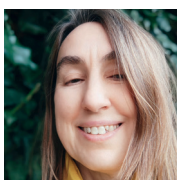
1<sup>ST</sup> CALL FOR PAPERS

#### KEYNOTE SPEAKERS



**FÓRIS, ÁGOTA**

*KÁROLI GÁSPÁR UNIVERSITY OF THE  
REFORMED CHURCH IN HUNGARY*



**GUINDA, CARMEN SANCHO**

*TECHNICAL UNIVERSITY OF MADRID*



**HÜTTNER, JULIA**

*UNIVERSITY OF VIENNA*



**KECSKES, ISTVAN**

*UNIVERSITY OF ALBANY, NEW YORK*



**MACI, STEFANIA M.**

*UNIVERSITY OF BERGAMO*

#### TOPIC AREAS

ARTIFICIAL INTELLIGENCE, CORPUS-  
BASED RESEARCH, DISCOURSE  
ANALYSIS, GENRE ANALYSIS,  
HEALTHCARE COMMUNICATION,  
INTERCULTURAL COMMUNICATION, LSP,  
NEW RESEARCH TRENDS, PRAGMATICS,  
TERMINOLOGY, TRANSLATION AND  
INTERPRETING

#### DEADLINES

**ABSTRACT SUBMISSION:  
31 MAY, 2024**

SELECTED PAPERS MIGHT BE PUBLISHED  
IN SPECIAL ISSUES TO BE AUTOMATICALLY  
SUBMITTED FOR INDEXING.

**REGISTRATION: 30 JUNE, 2024**

#### REGISTRATION AND PROGRAM INFORMATION

AELFE2024@SEMMELWEIS.HU  
[www.semmelweis.hu/szaknyelv/en/aelfe2024/](http://www.semmelweis.hu/szaknyelv/en/aelfe2024/)

VENUE: SEMMELWEIS UNIVERSITY, BASIC MEDICAL SCIENCE CENTER (EOK)

6-7 SEPTEMBER,

2024

BUDAPEST, HUNGARY