

ChRONIC INFLAMMATION

Dr. Attila Zalatnai

Myocarditis rheumatica (HE)
Tuberculosis pulmonis (HE)
Tuberculosis pulmonis (ZN)
Granuloma corporis alienis
(HE)
Granulation tissue (HE)
Sarcoidosis (HE)

Tuberculosis pulmonis

Clinical features:

The inflammation persists for several weeks or even months.

Pathological features:

Presence of chronic inflammatory cells

Lymphocytes, plasma cells, histiocytes (eosinophiles)

Neutrophilic leukocytes are not involved

Etiological factors:

- Infection (viruses, certain bacteria, phagocytosis-resistant microbes, parasites)
- Immunological damage, autoimmune diseases
- Non-degradable materials (foreign bodies, fat)
- Persistent chemical irritation (alcohol, bile reflux)
- Unknown

usual

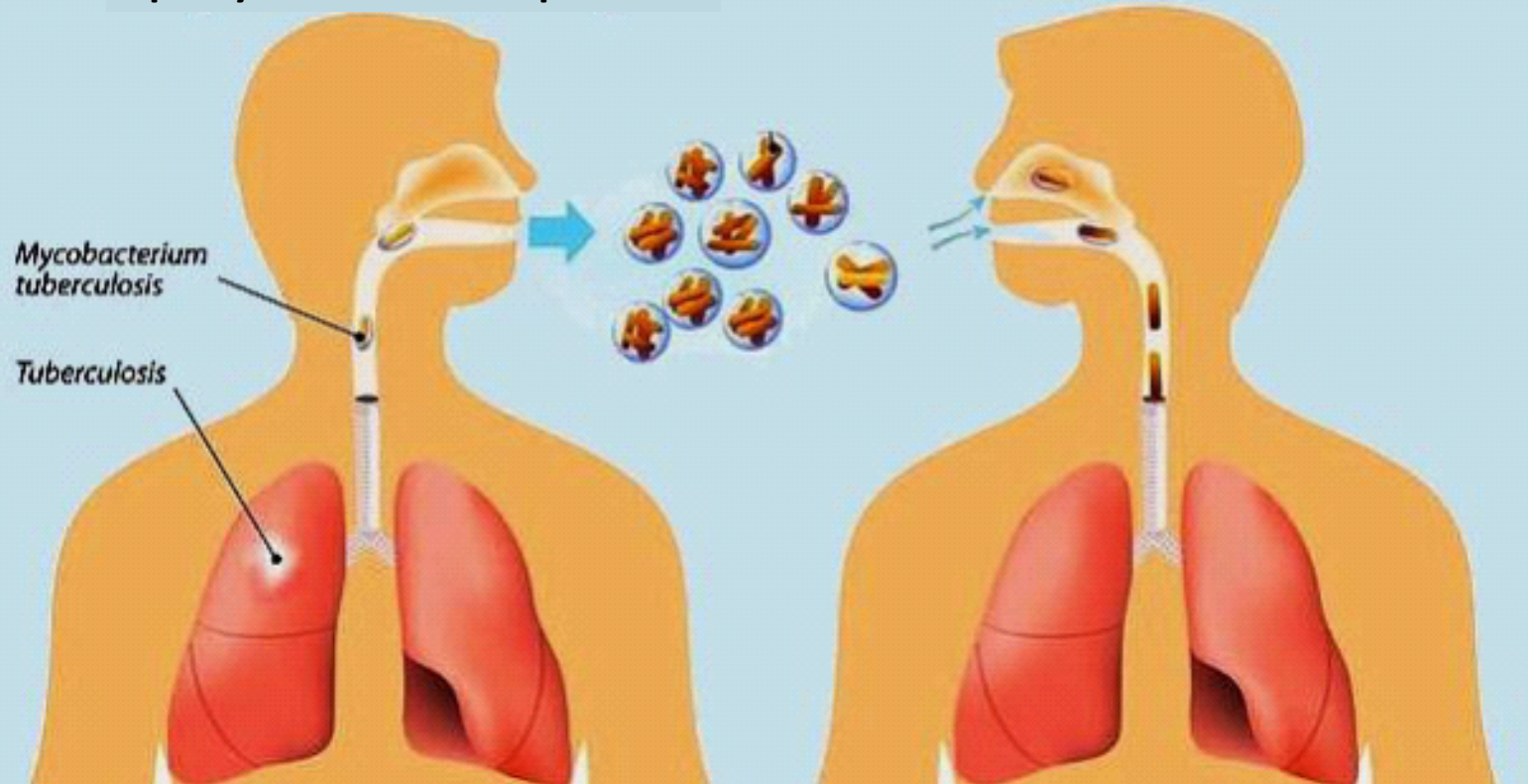
fibrotizing

granulomatous

- caseous
- non-caseous
- suppurative

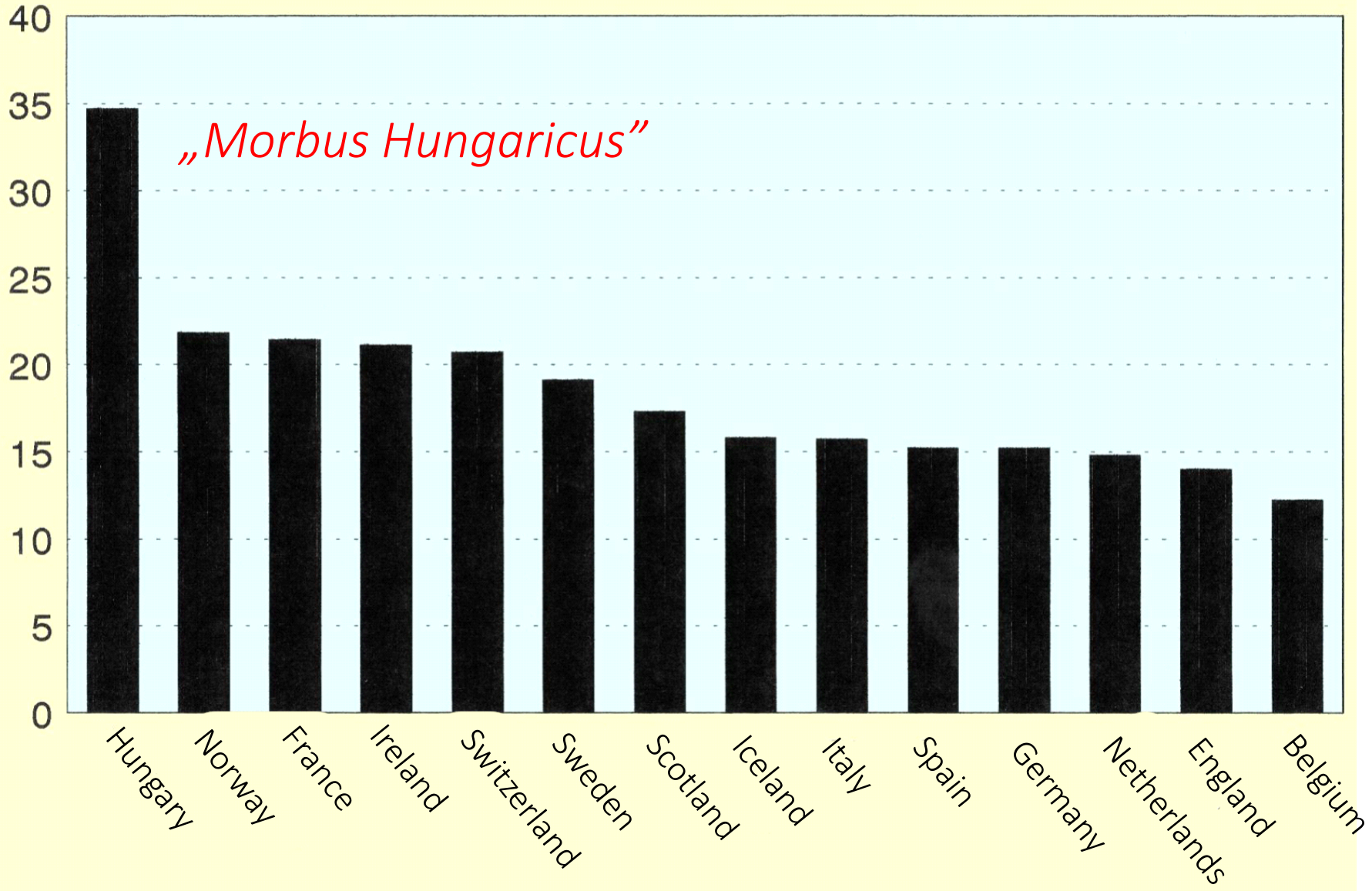
Tuberculosis (TBC)

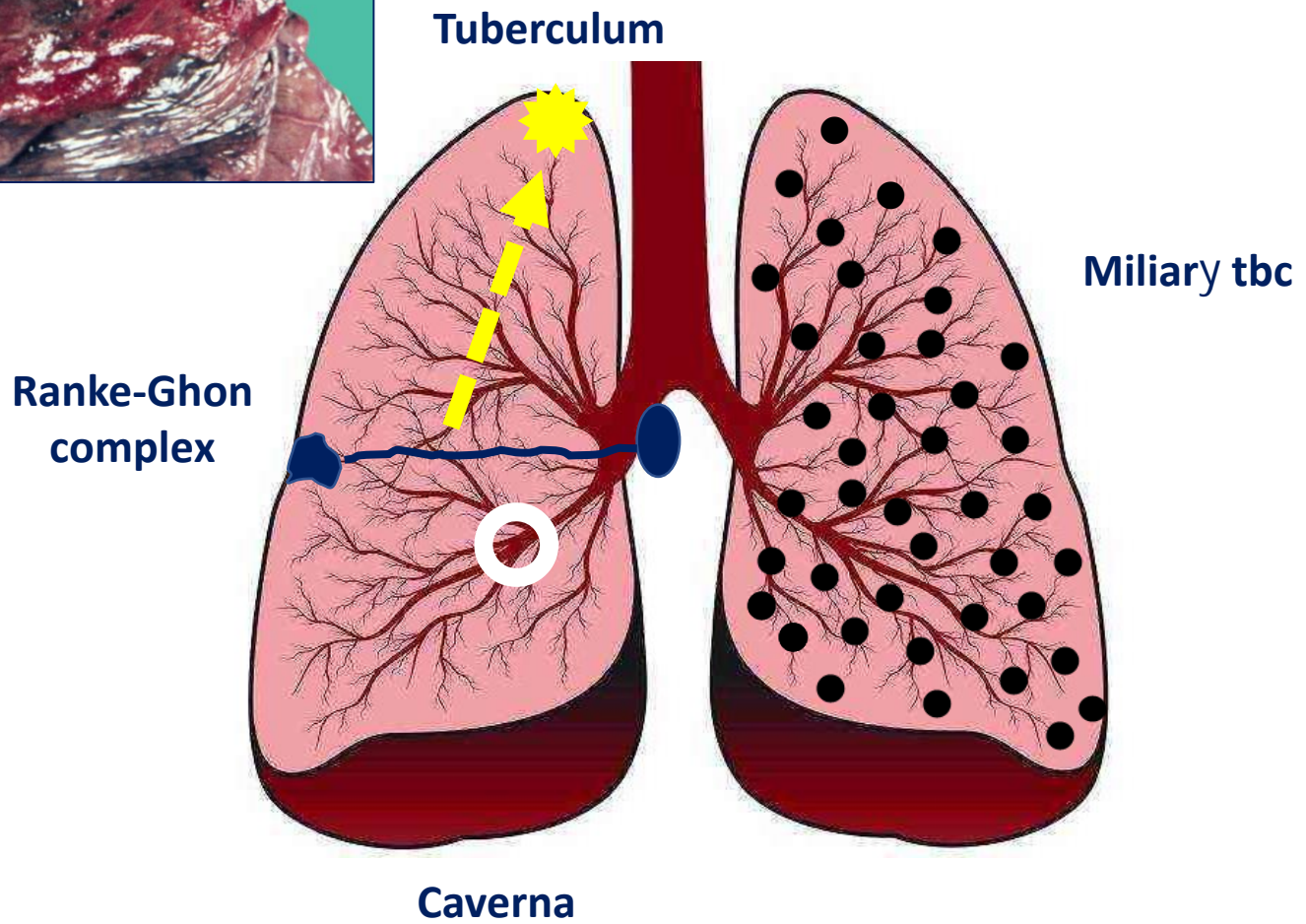
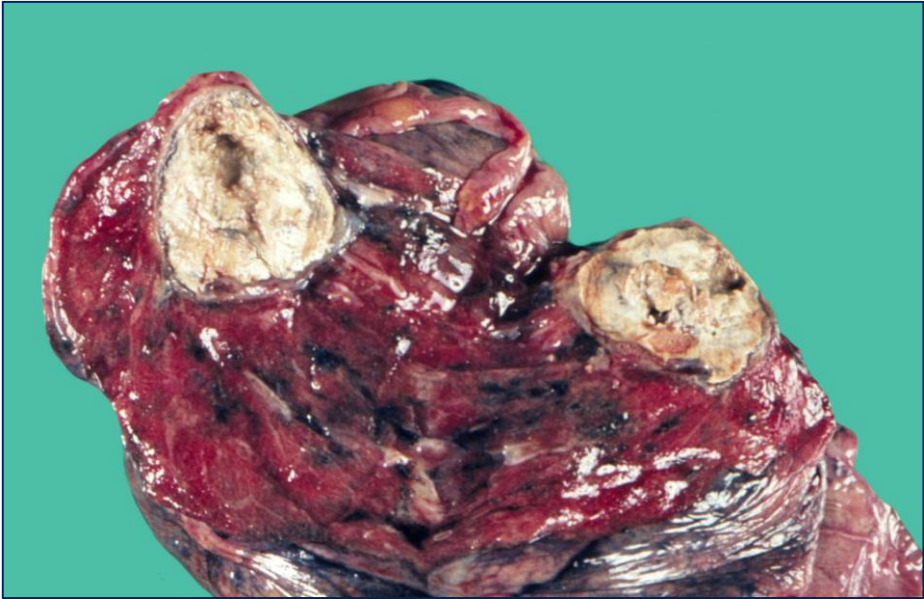
Openly infectious TBC patient

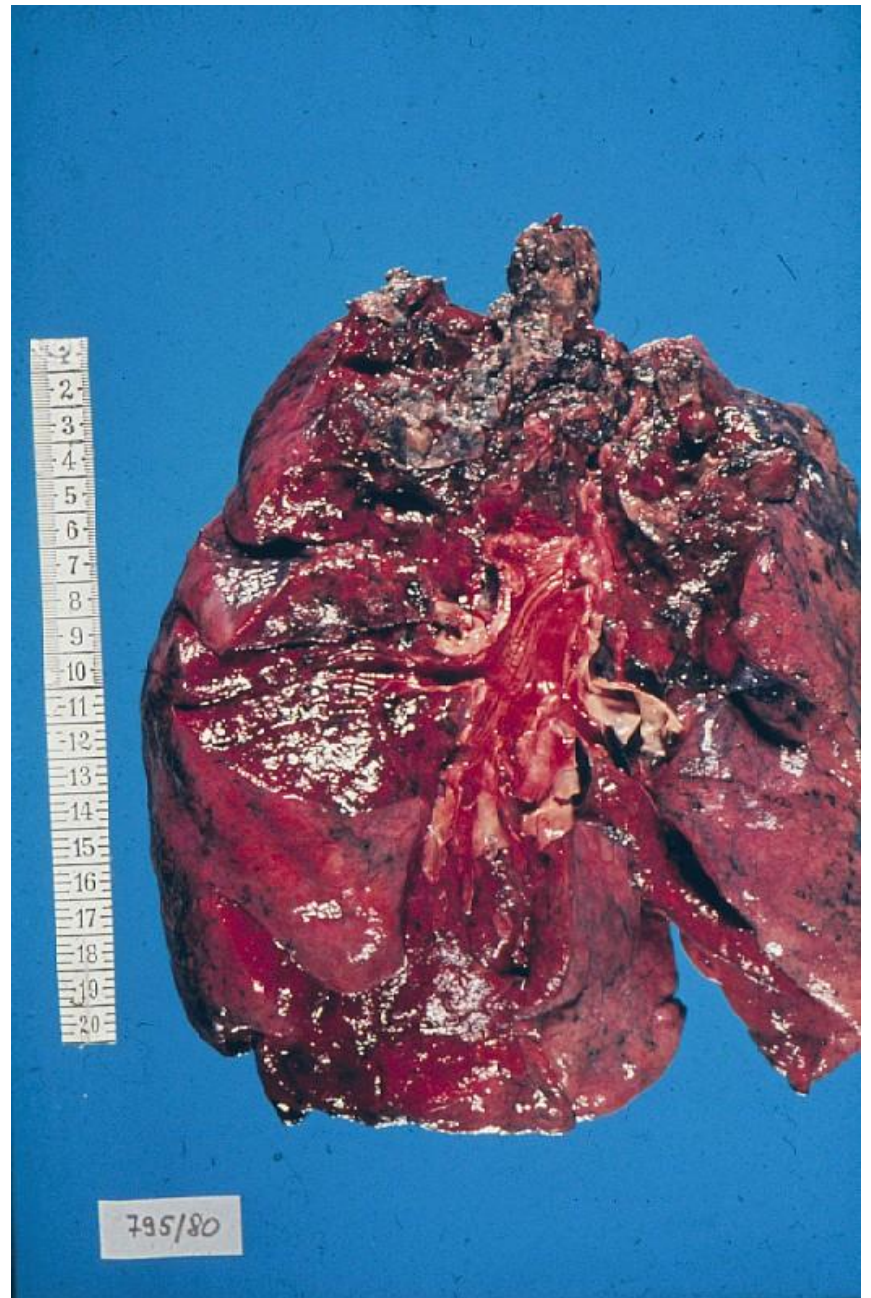


TBC related deaths, 1911-1913.

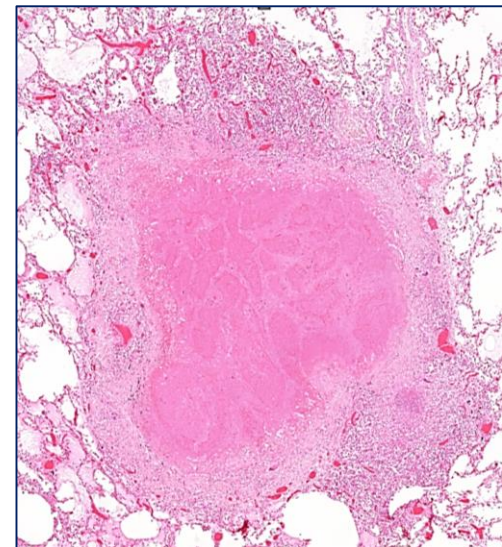
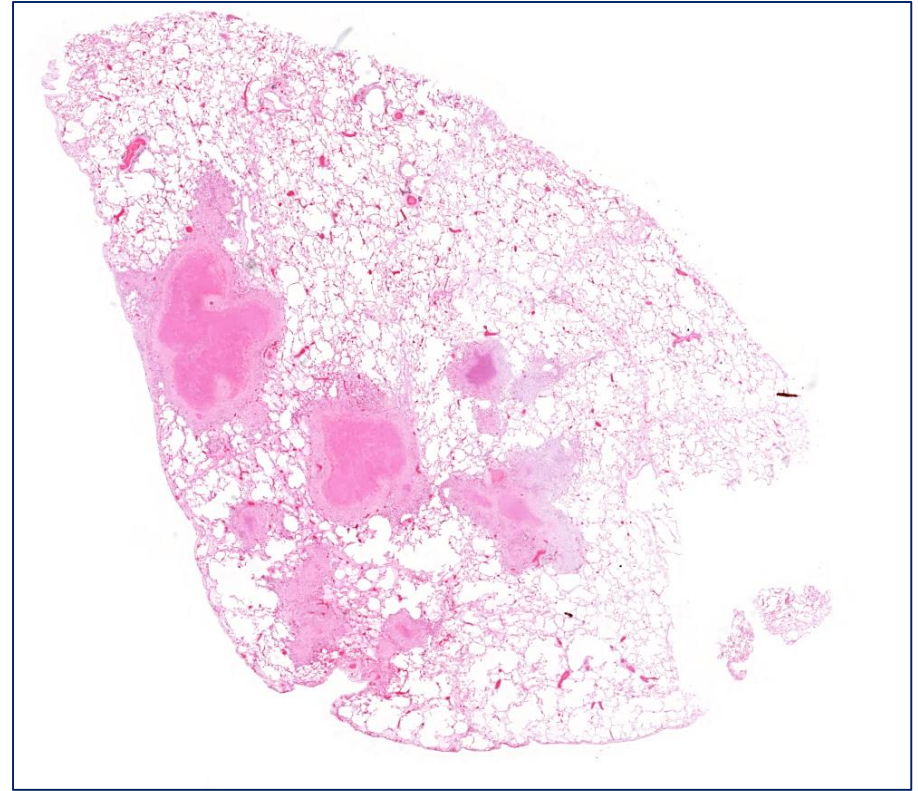
Deaths /10 000 citizens

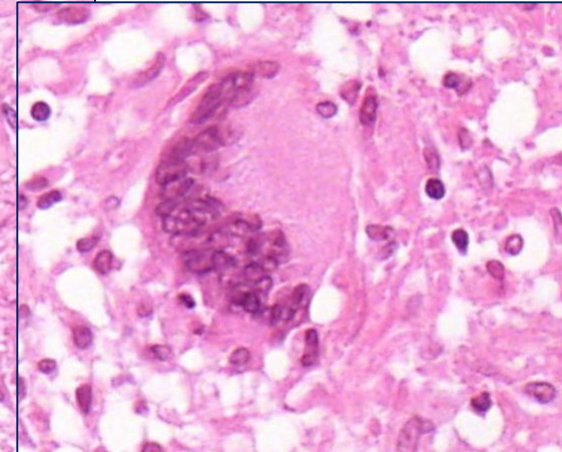
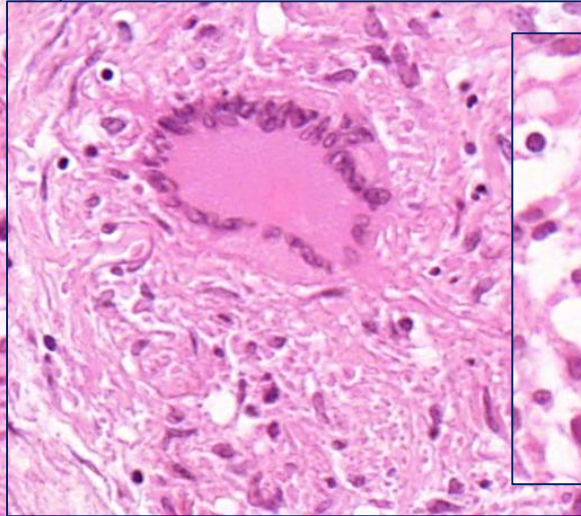
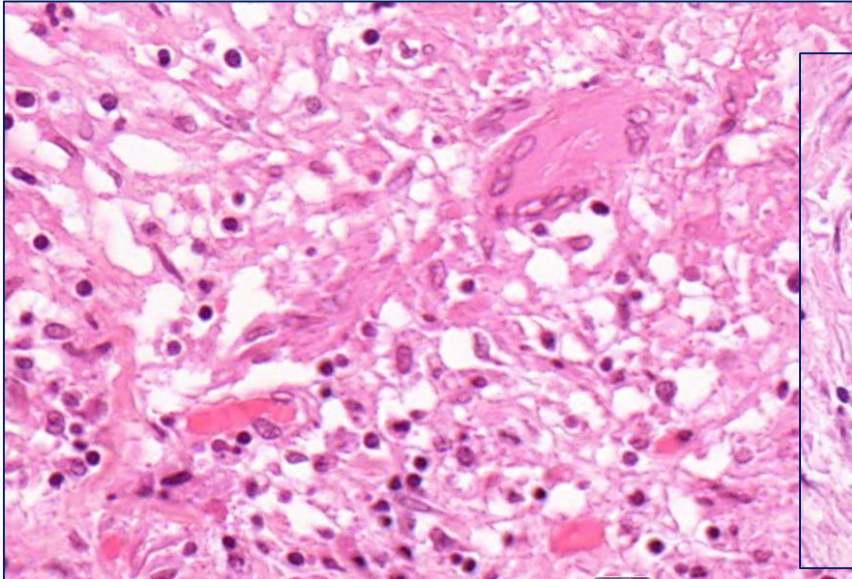
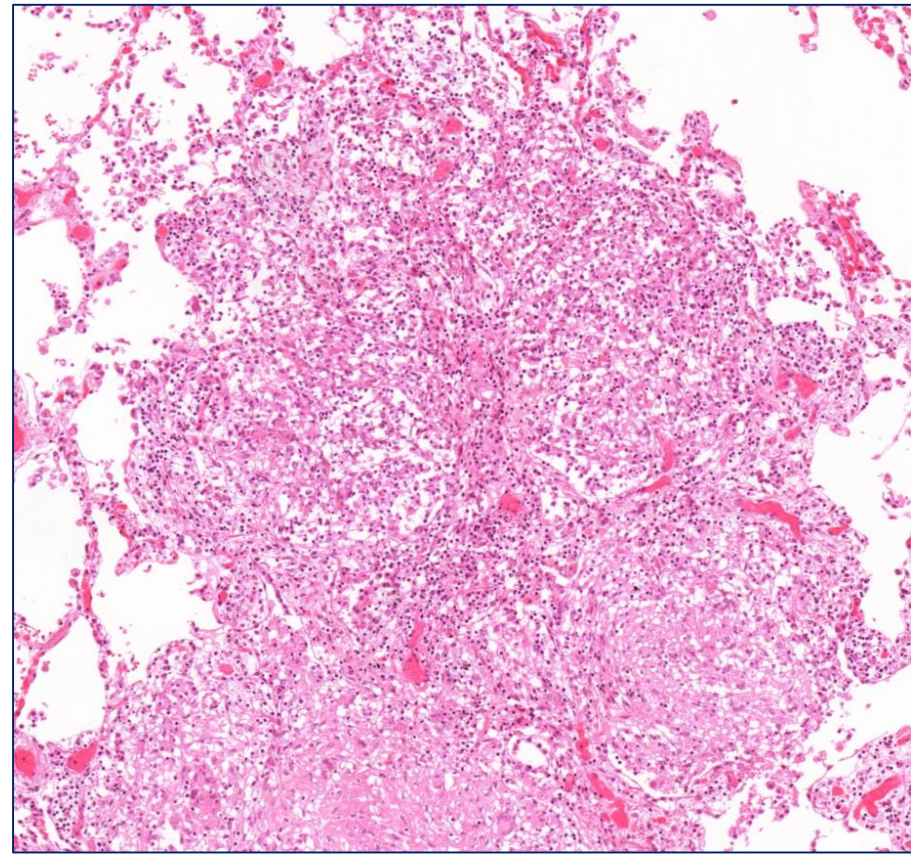
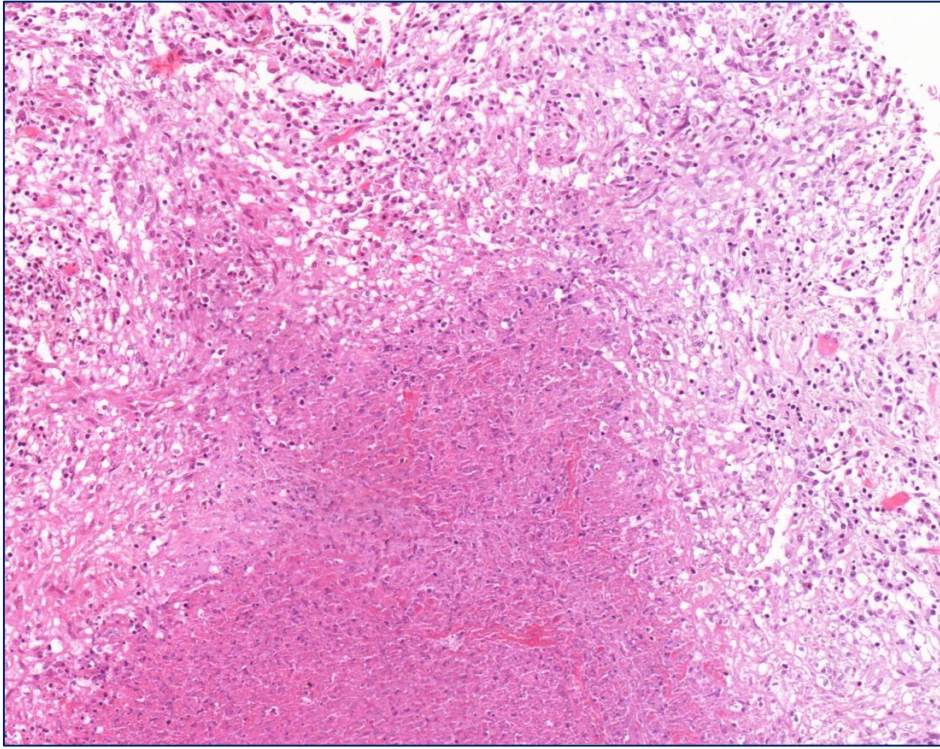




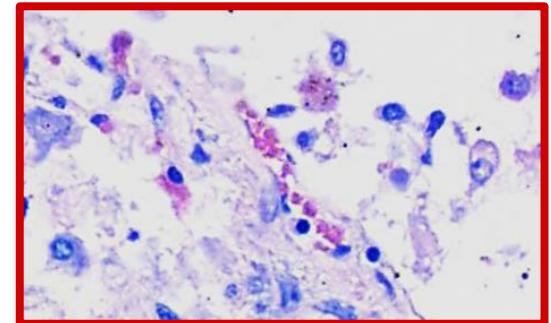
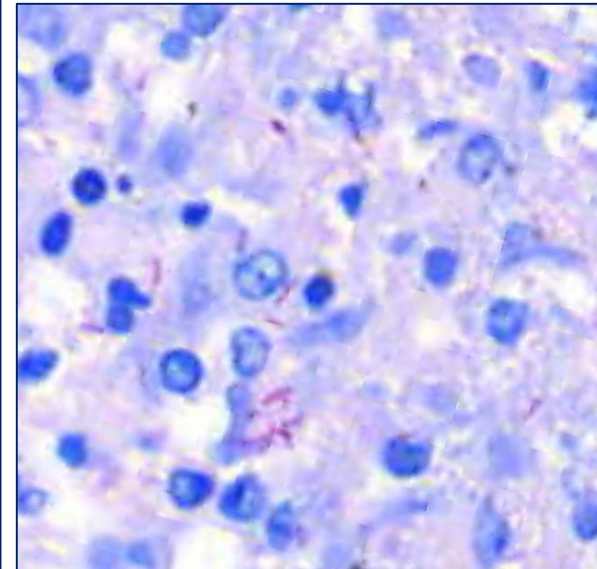
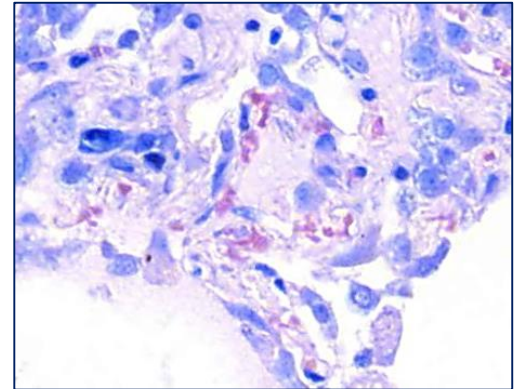
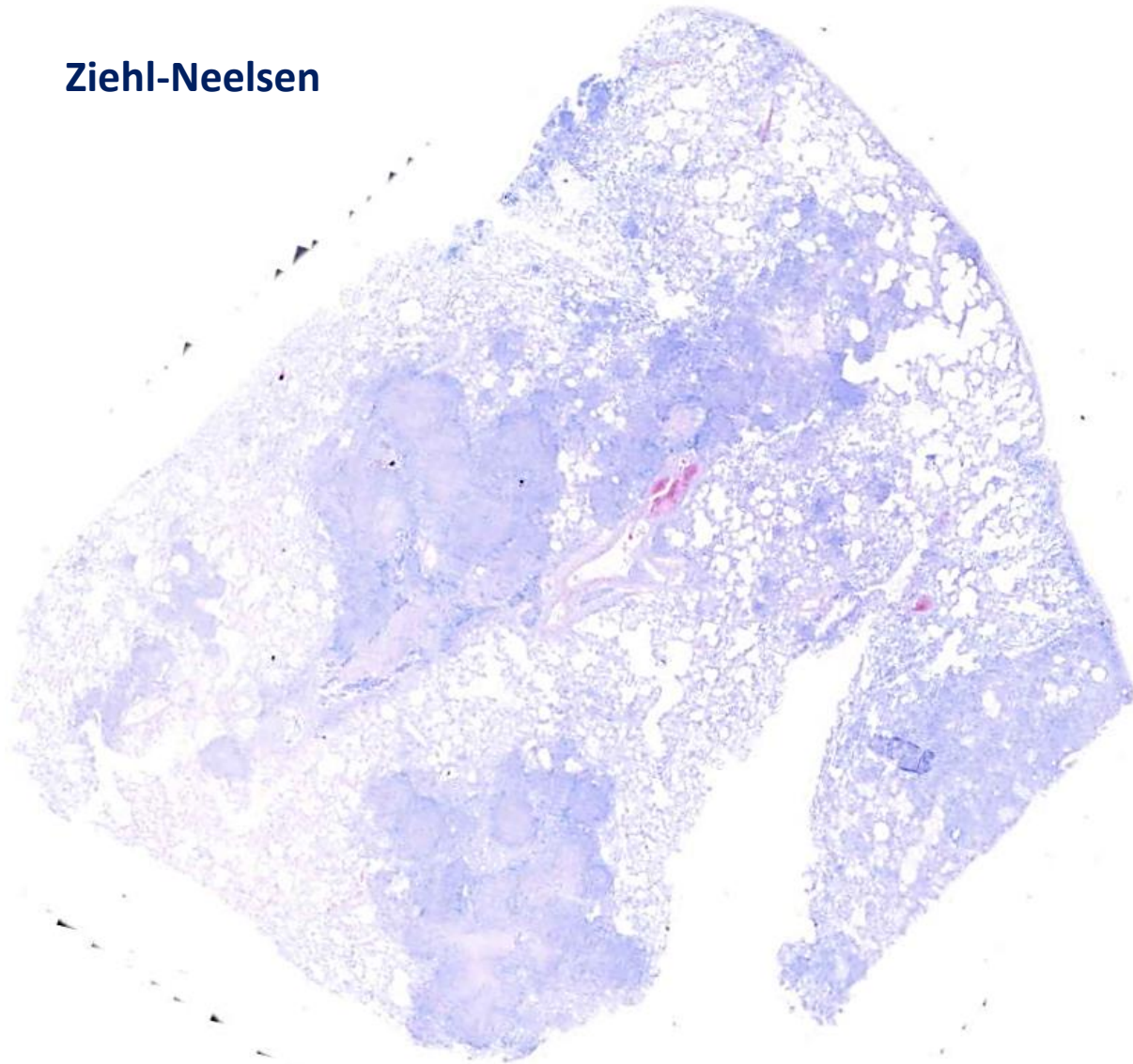


Tuberculosis pulmonis





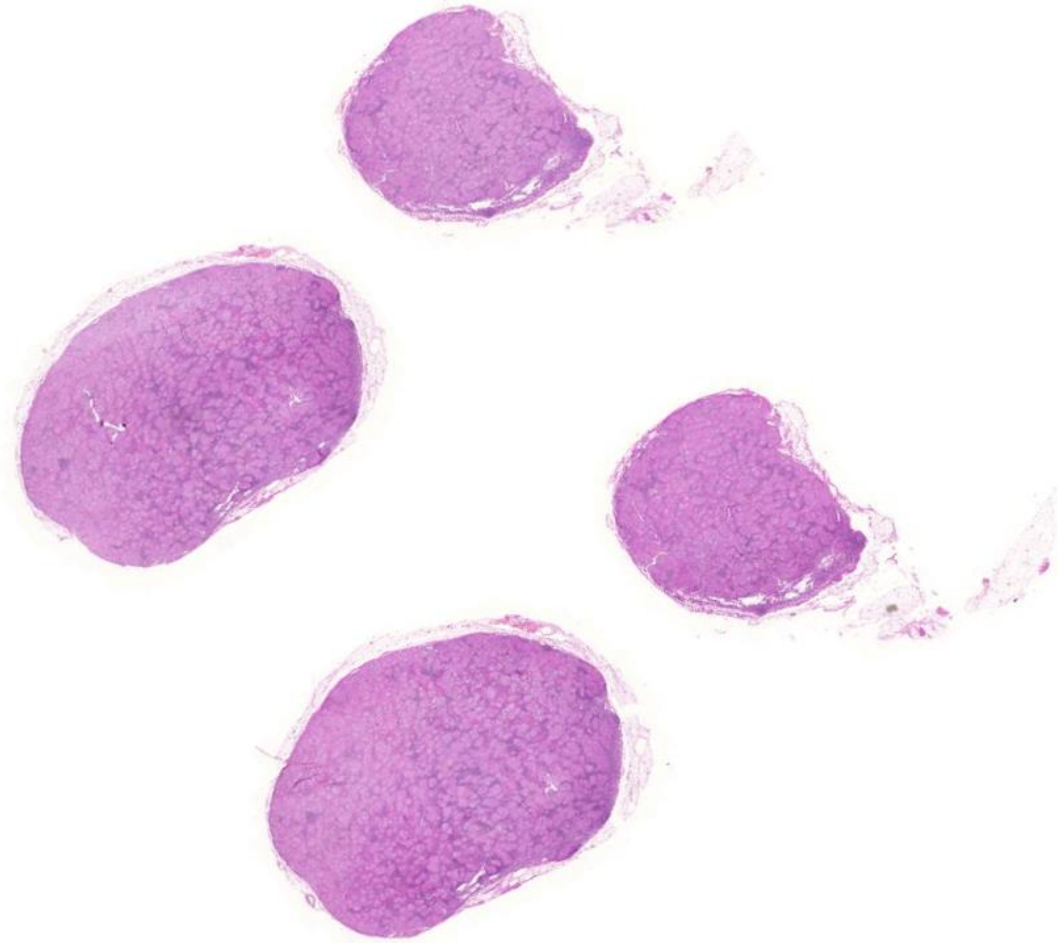
Ziehl-Neelsen

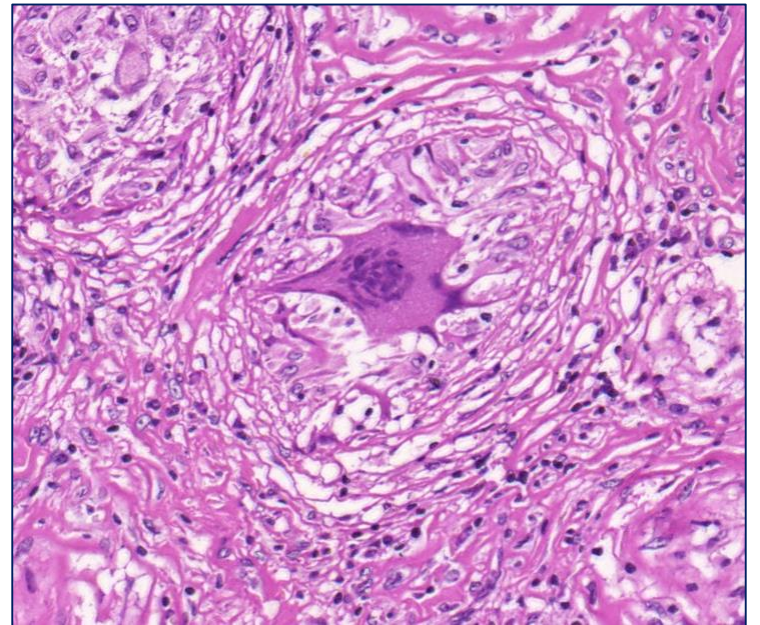
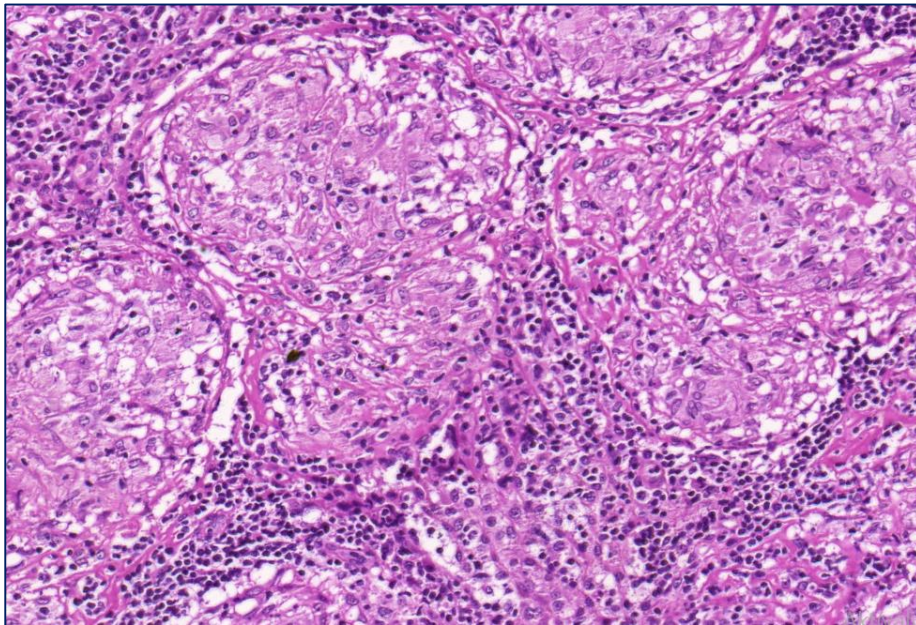
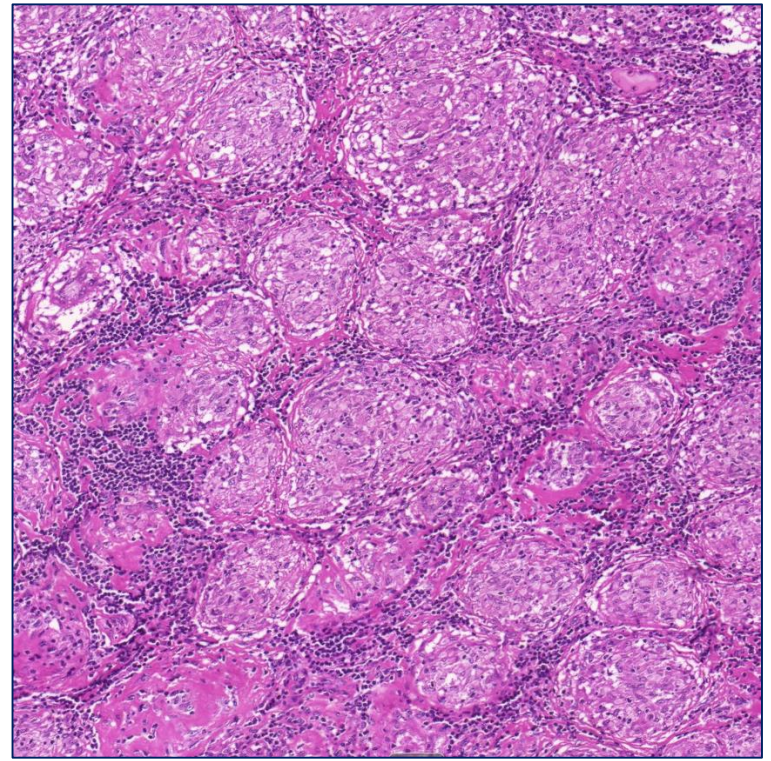
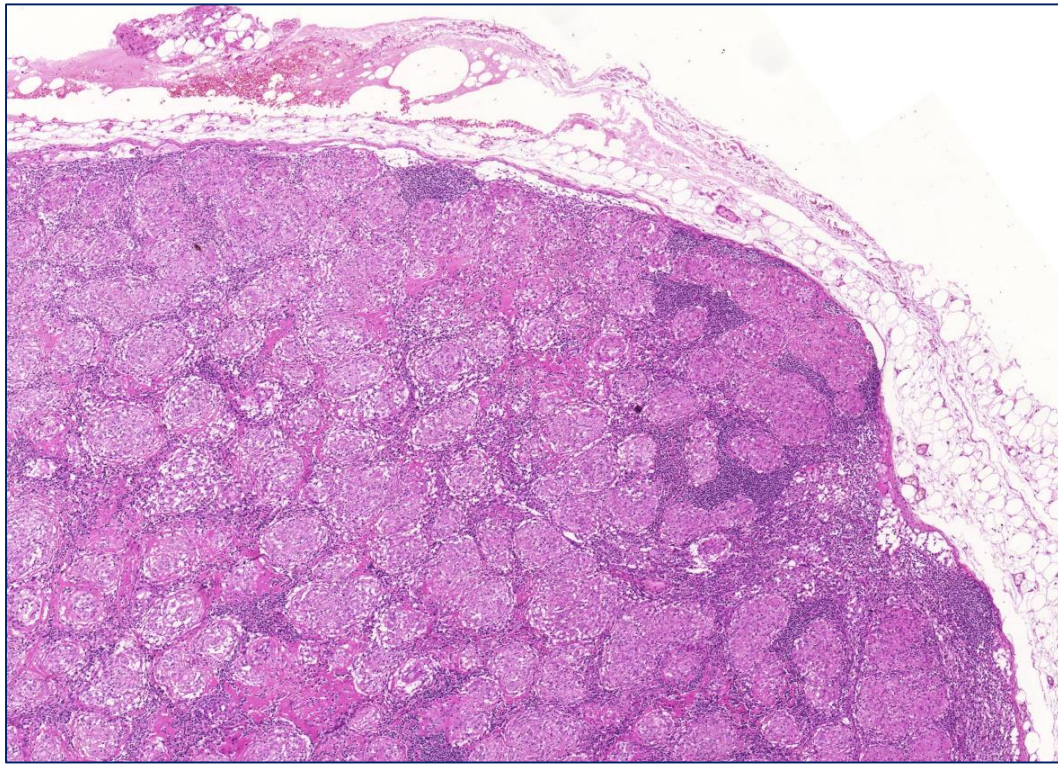


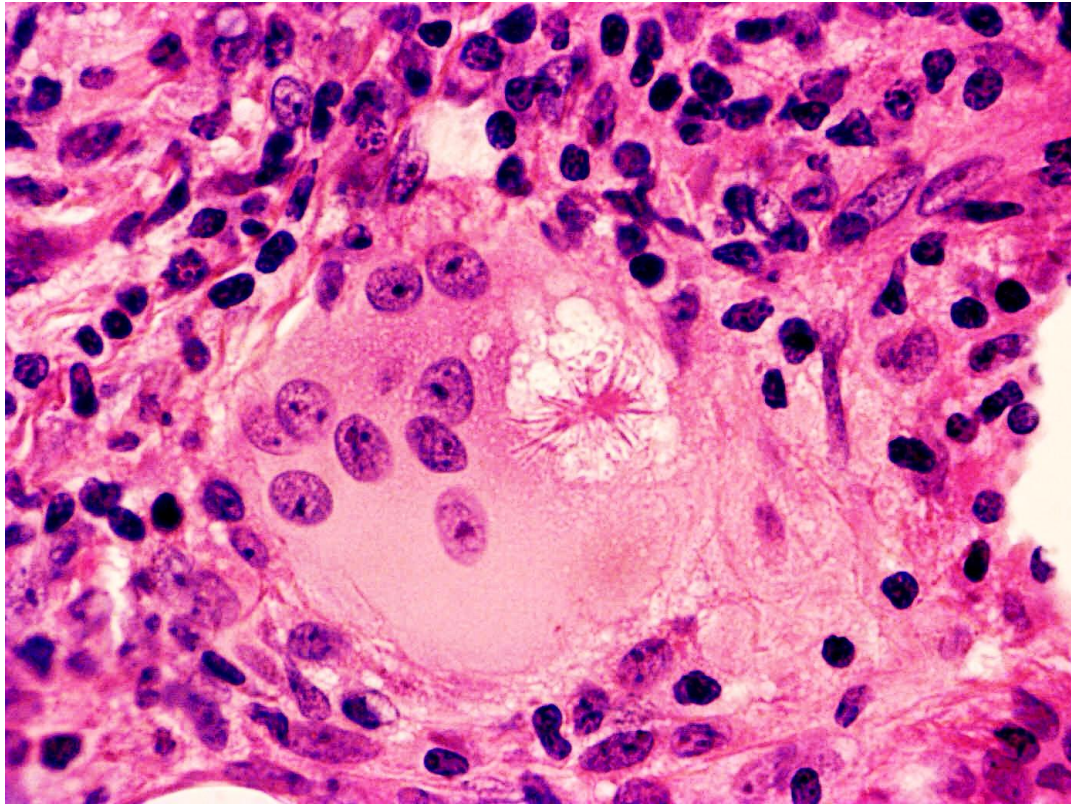


BHL-syndrome

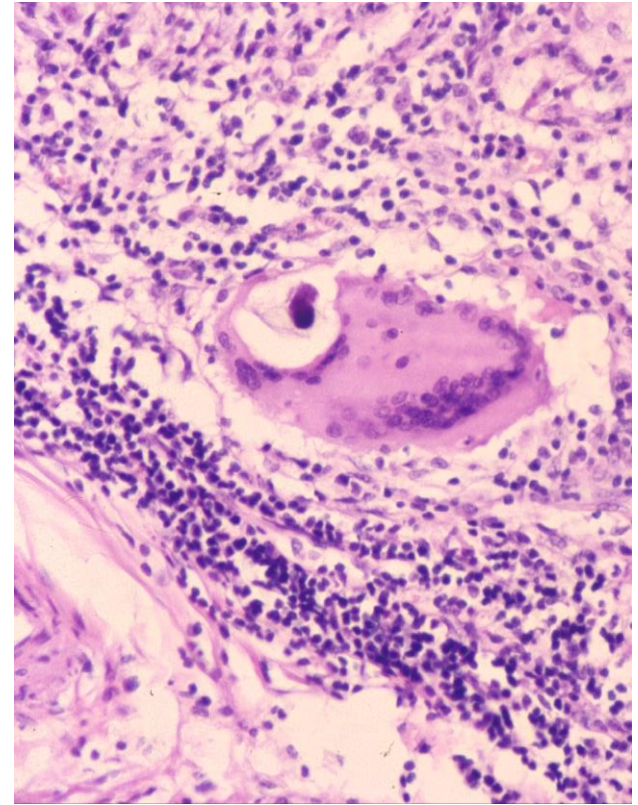
06. Sarcoidosis (HE)



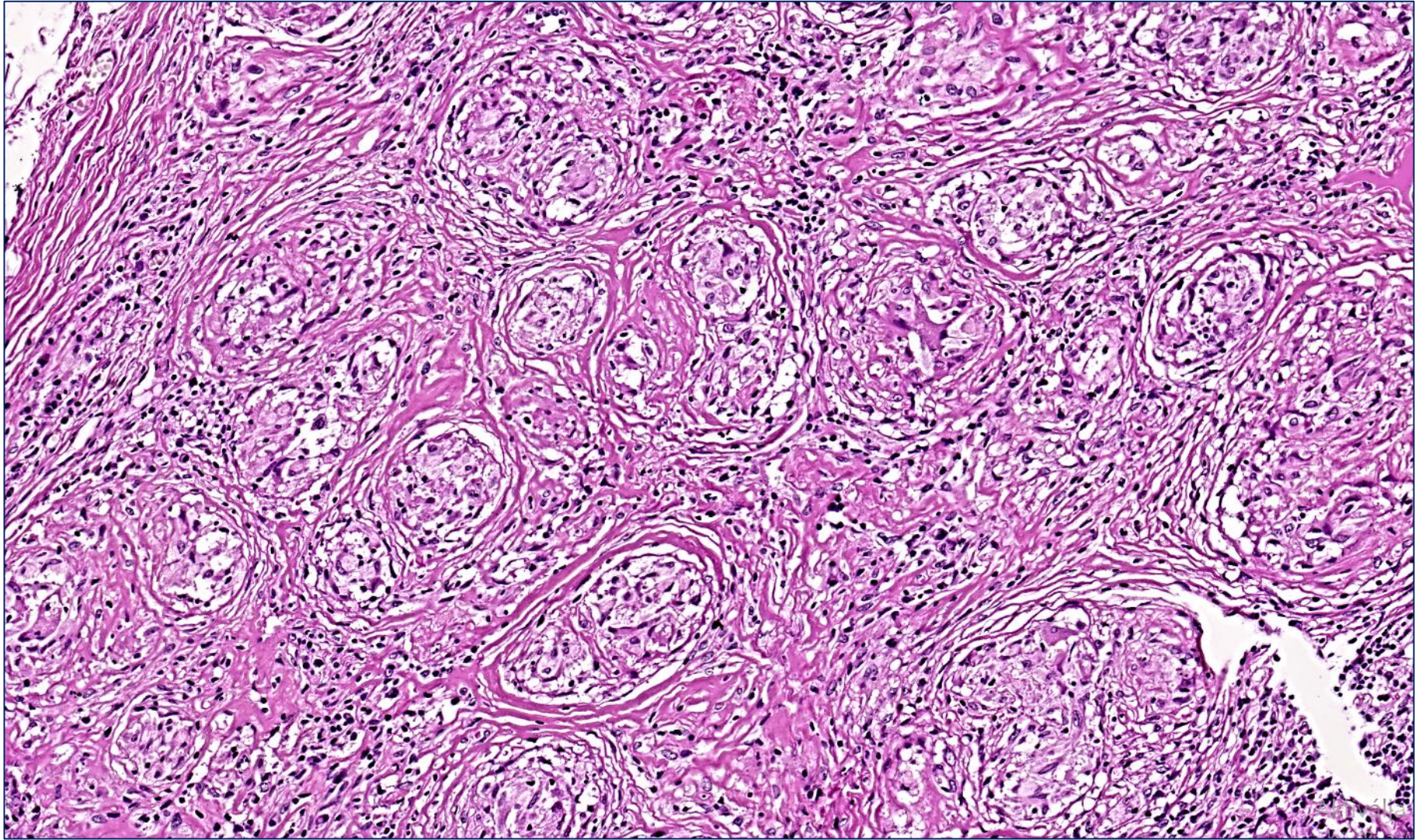




Asteroid body

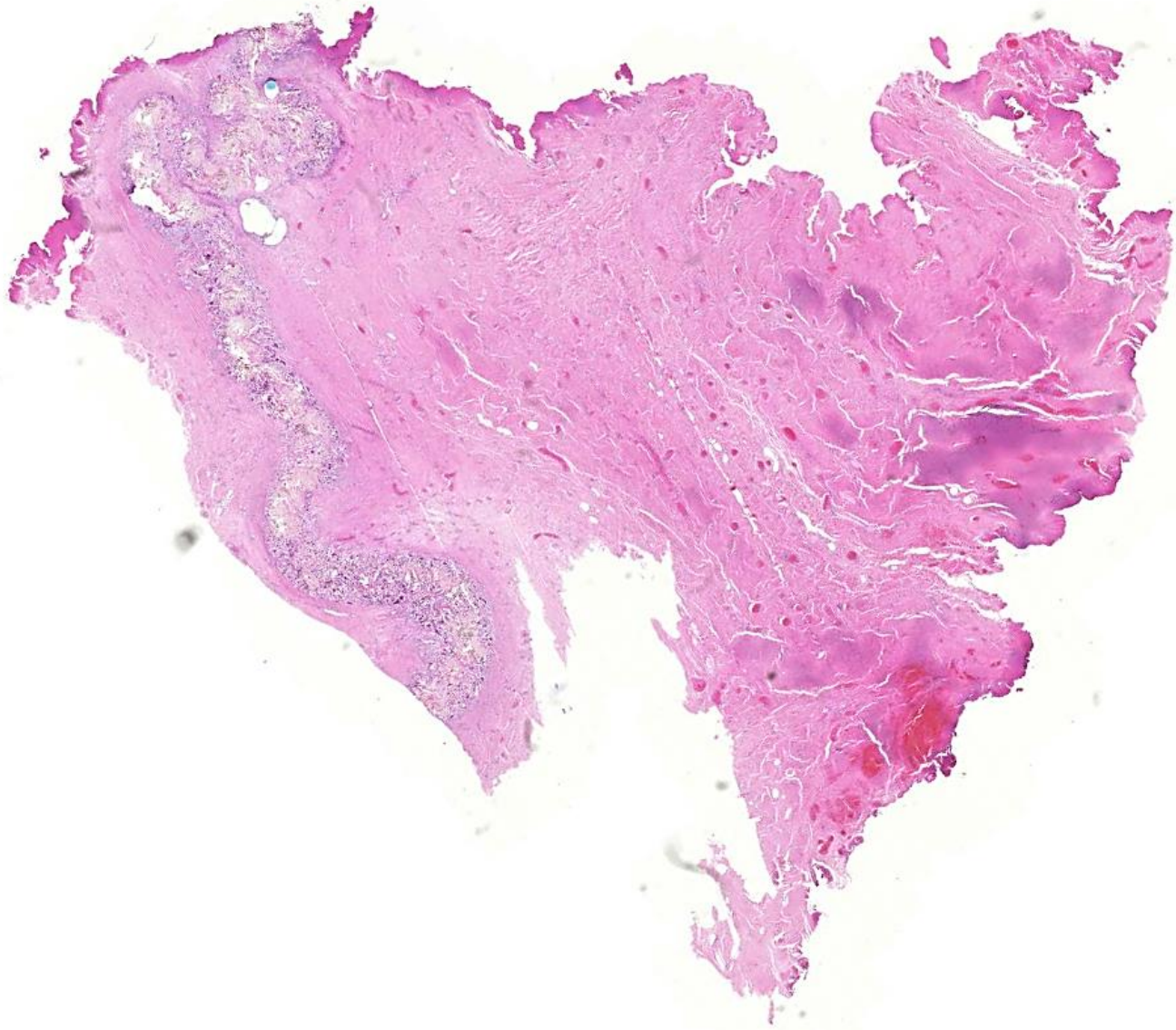


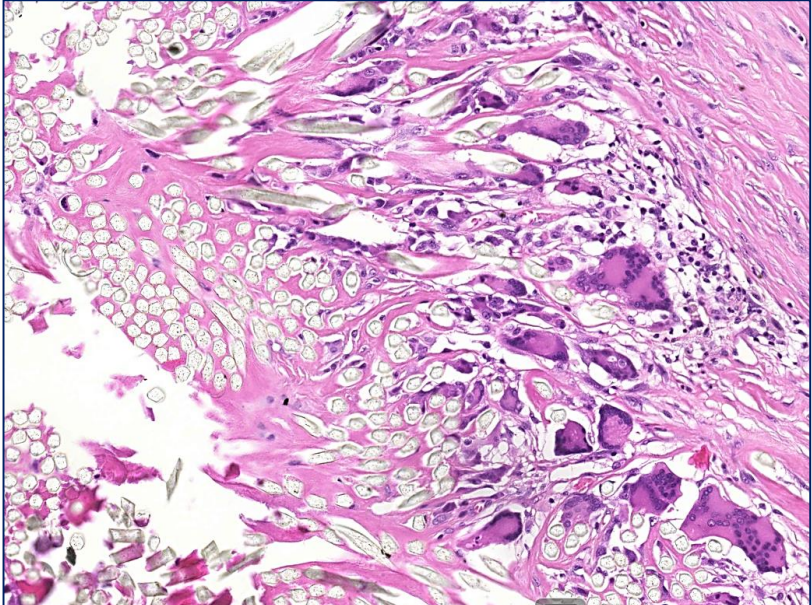
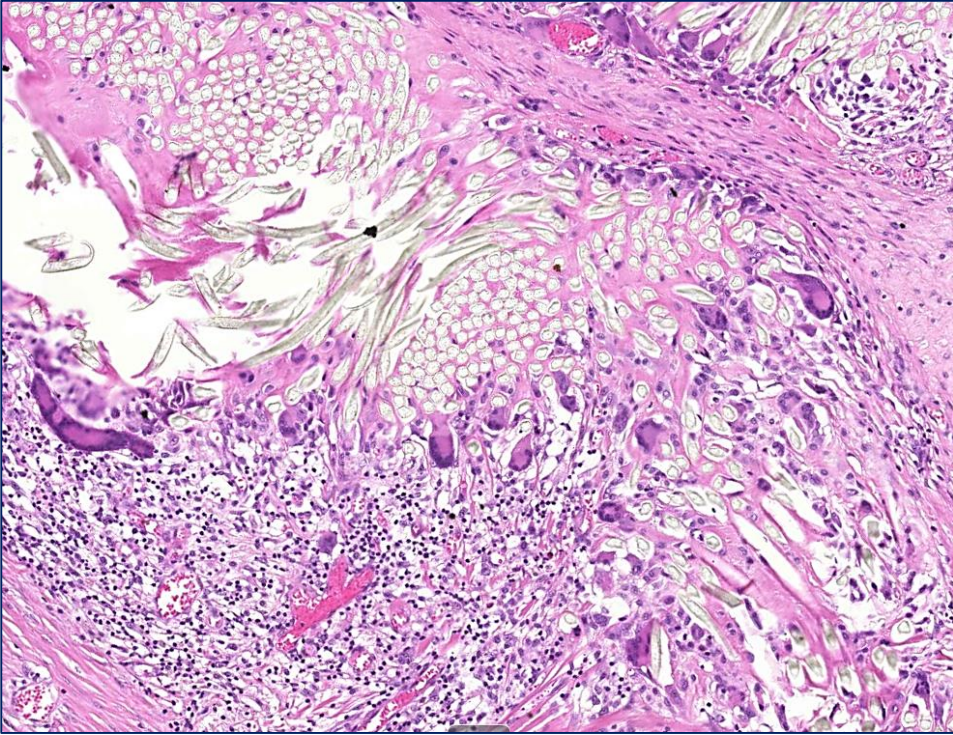
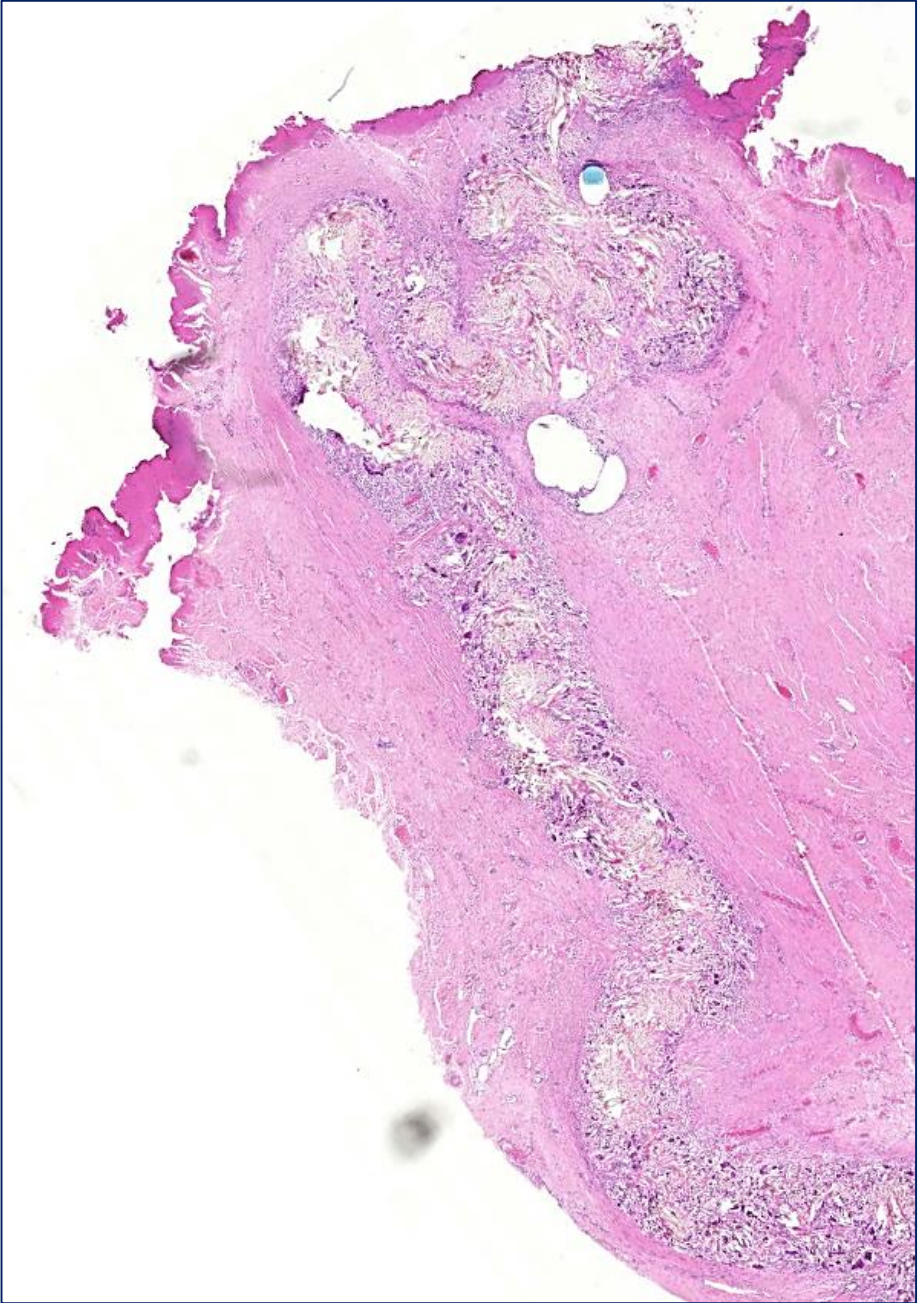
Schaumann body

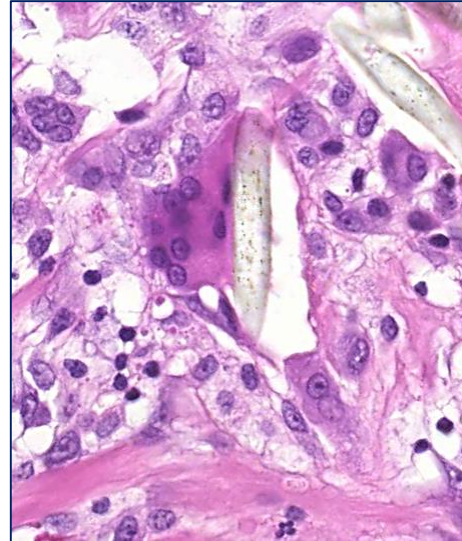
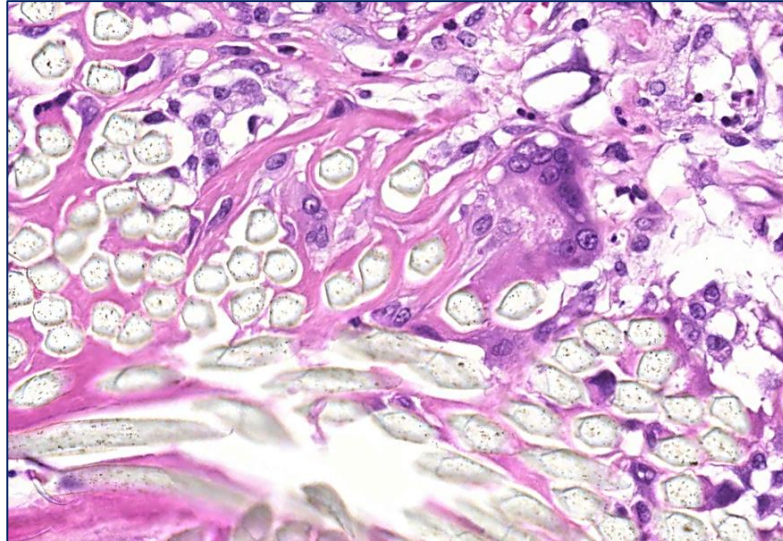
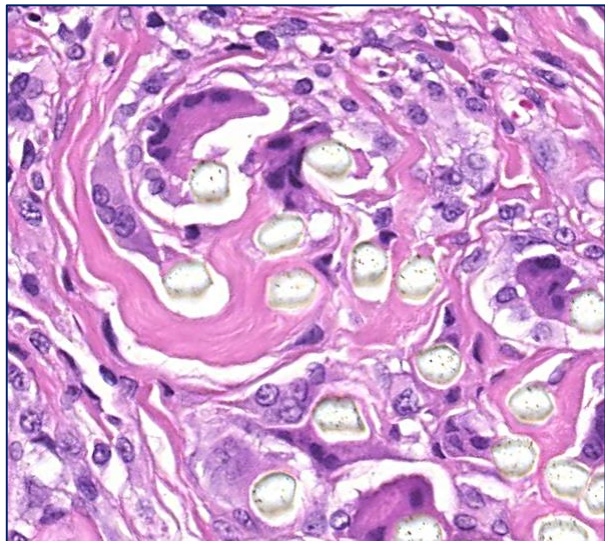
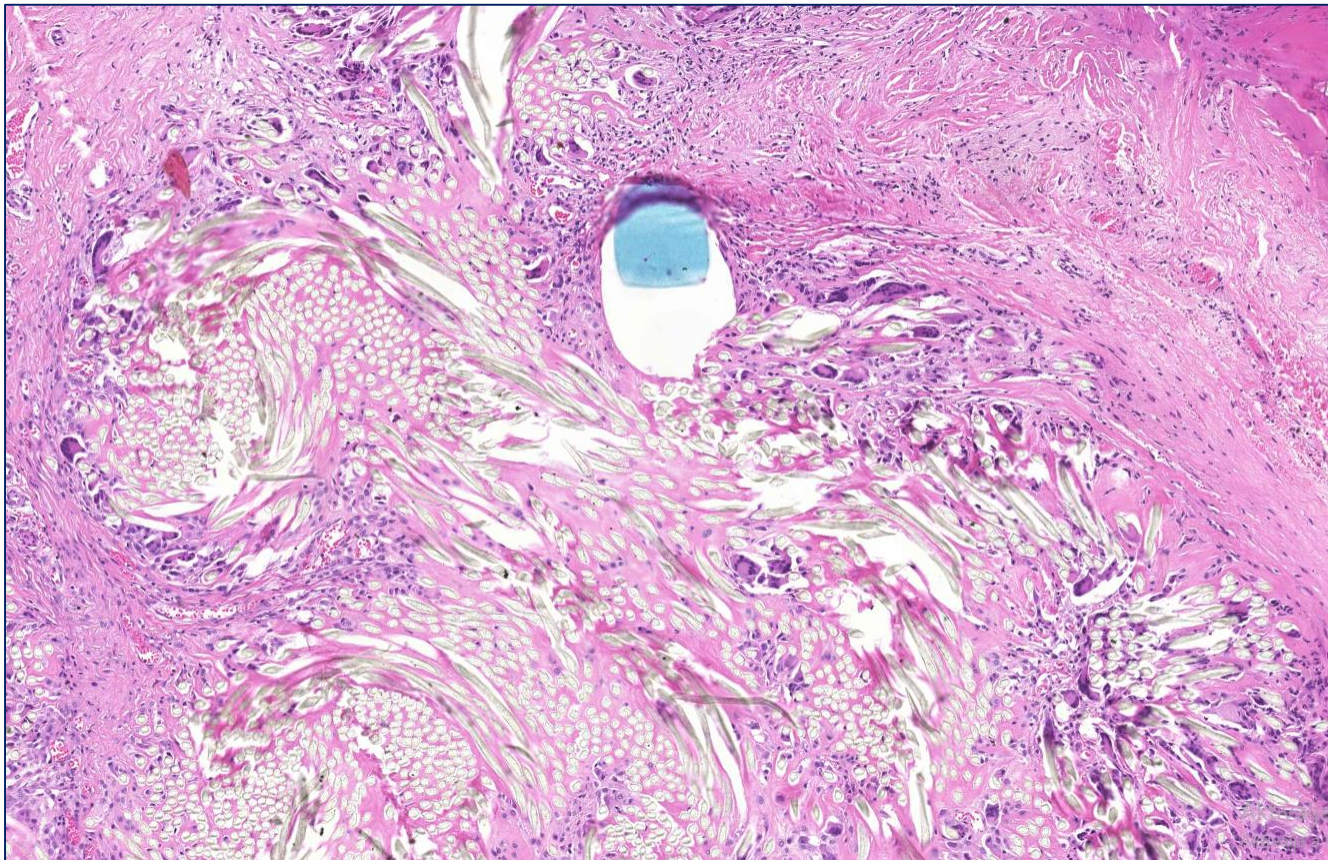




04. Granuloma corporis aliene (HE)







Rheumatic fever

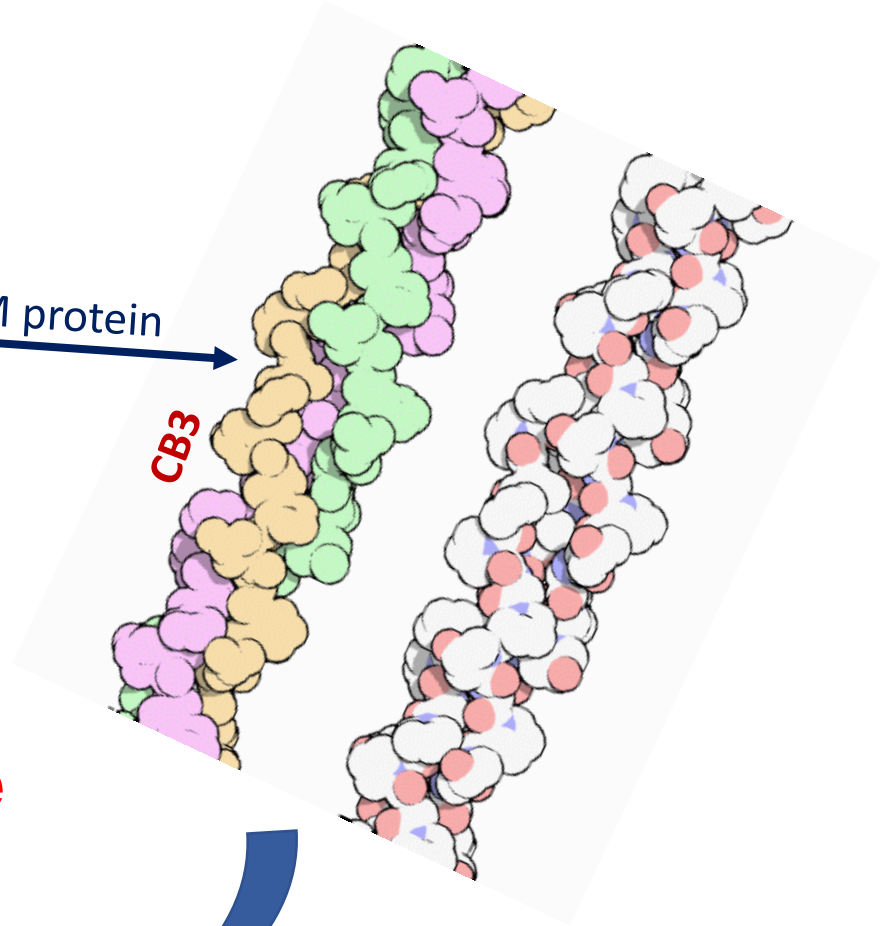
5-15 year-olds

Group A Strcc. B-haemolyticus

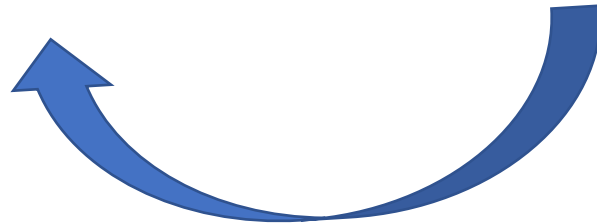


M protein

CB3

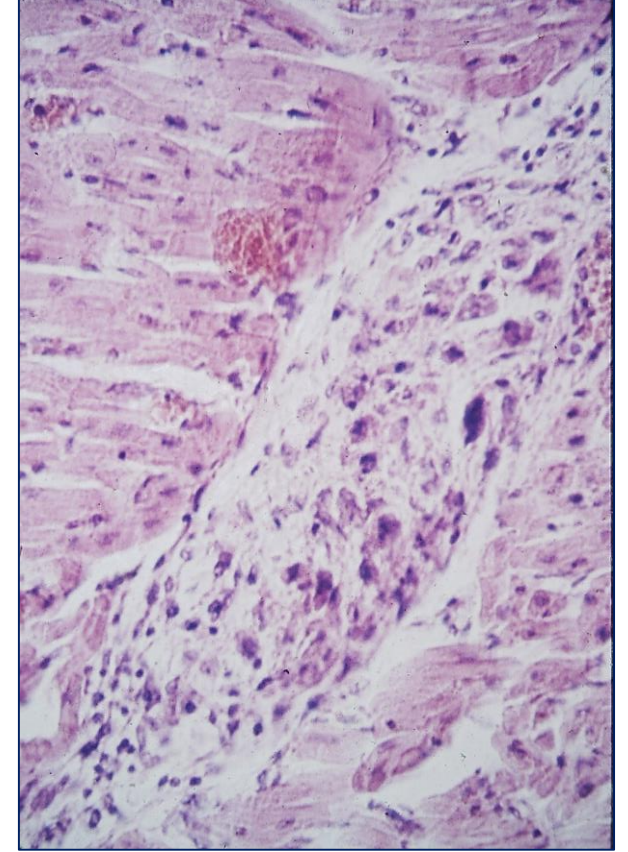
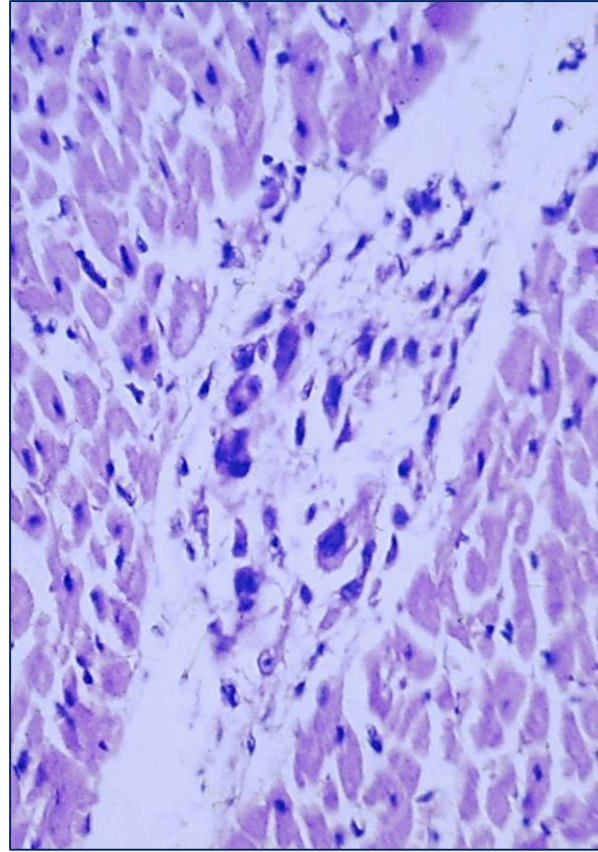
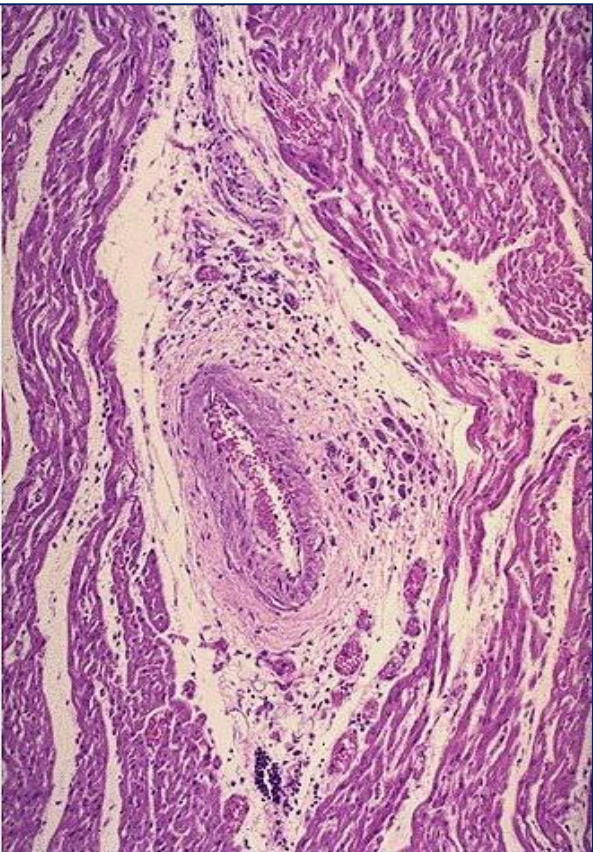
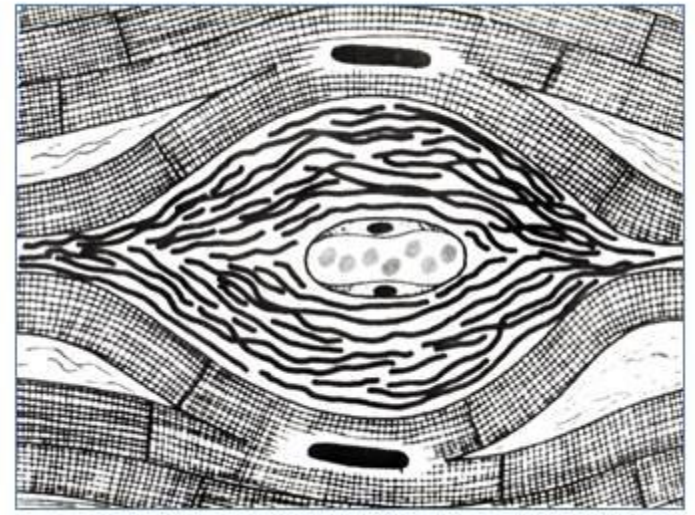
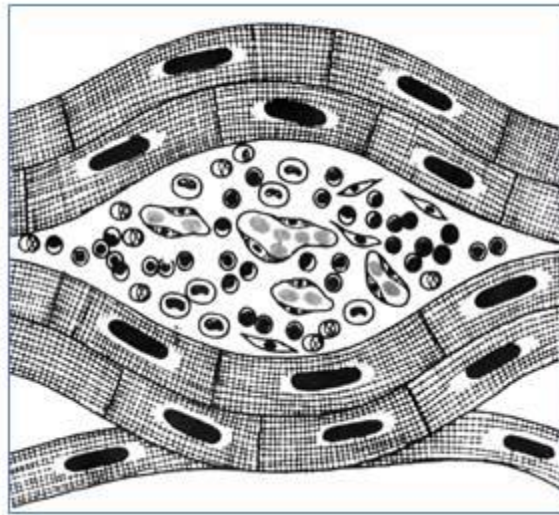
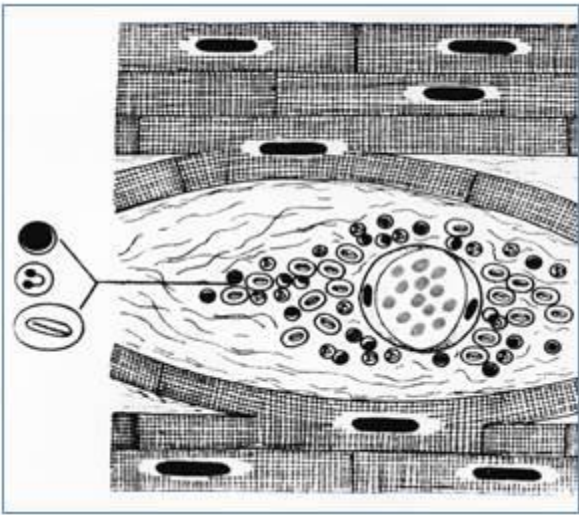


Immune response

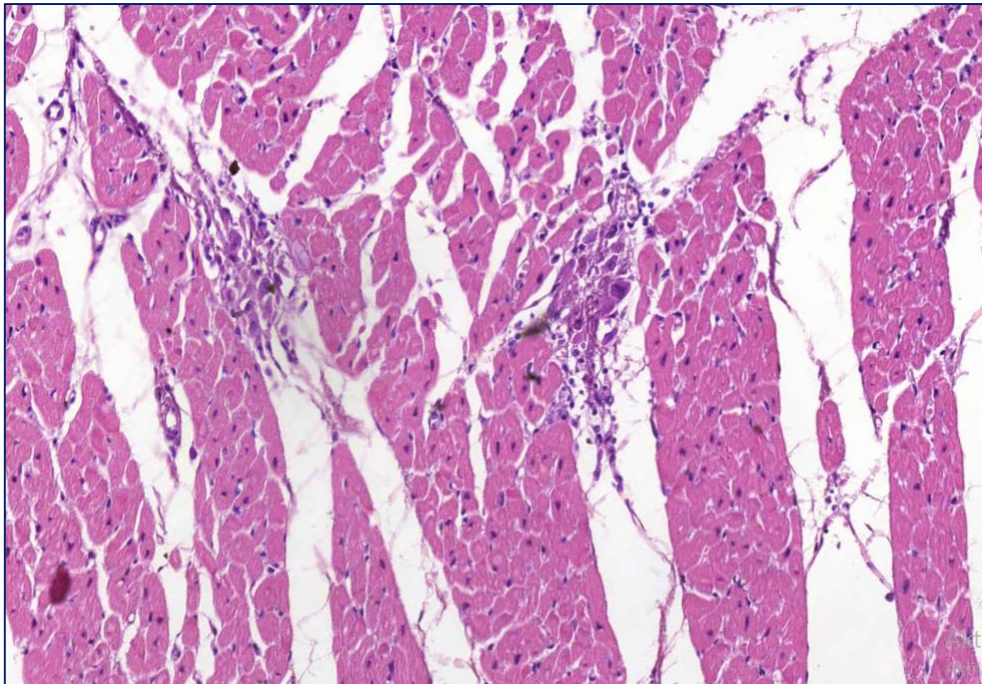
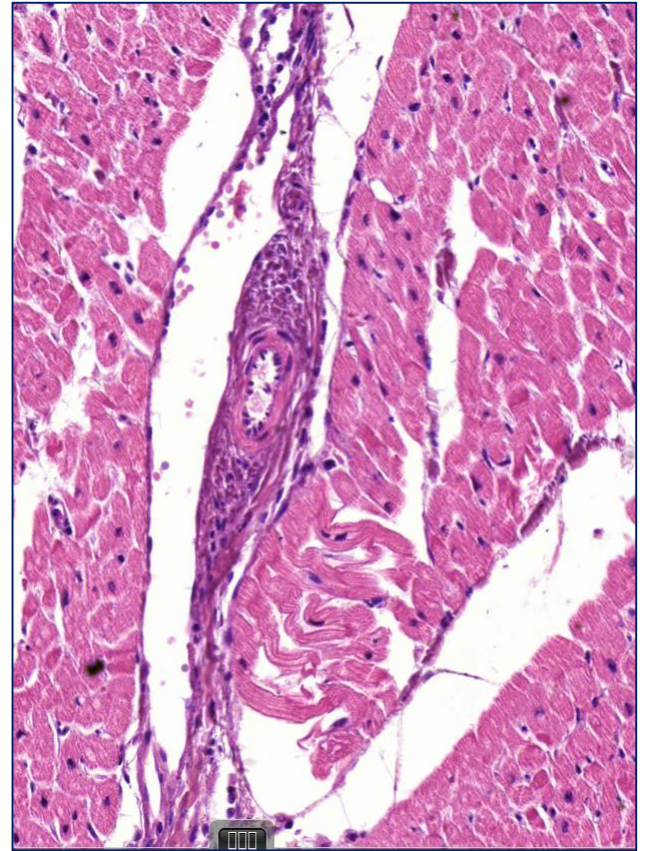
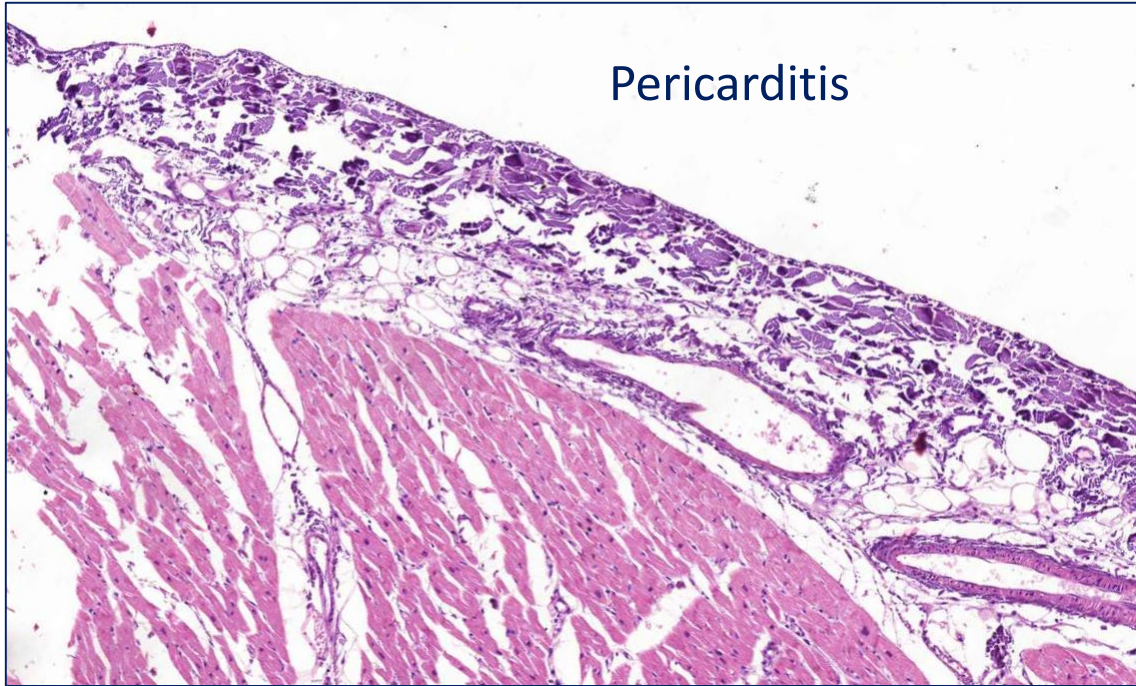


01. Myocarditis rheumatica (HE)

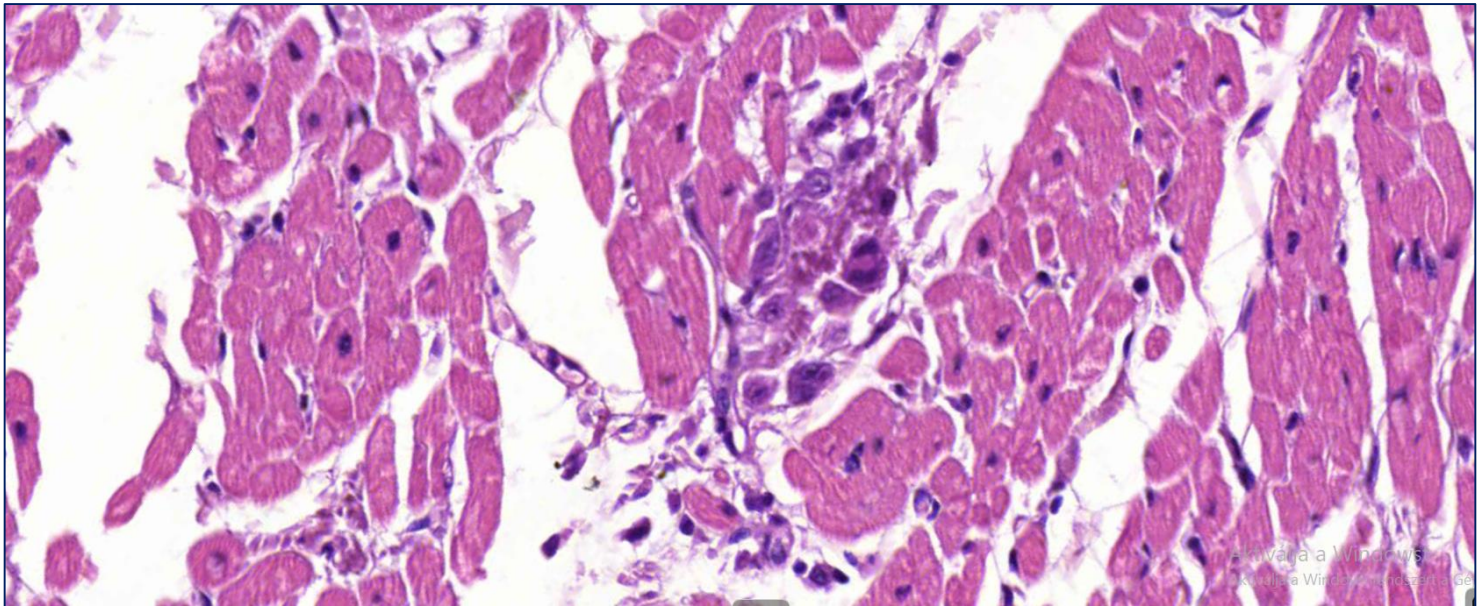
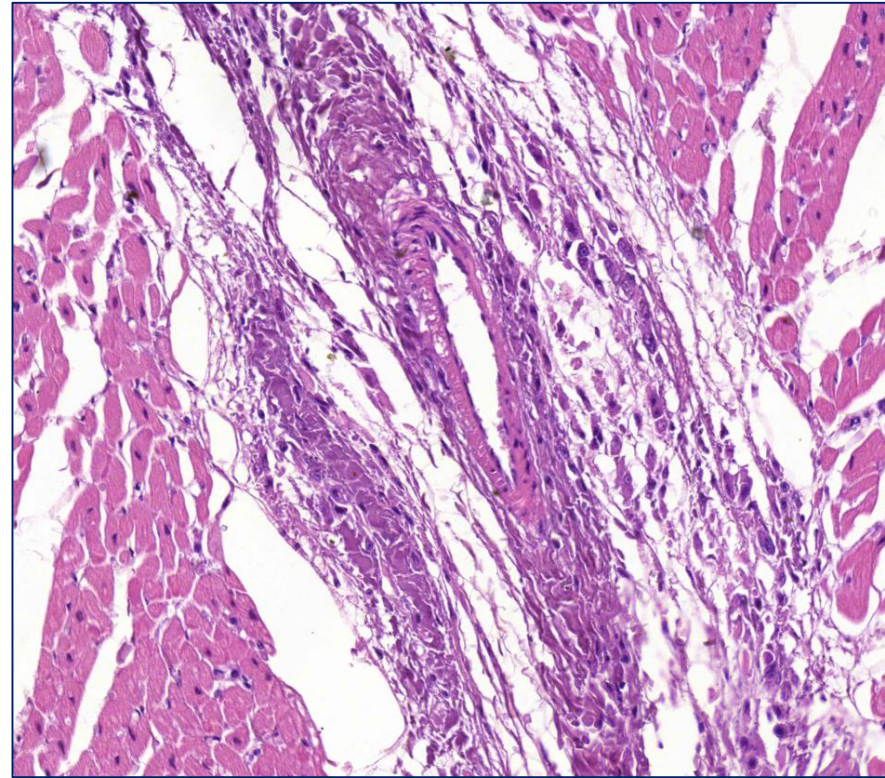
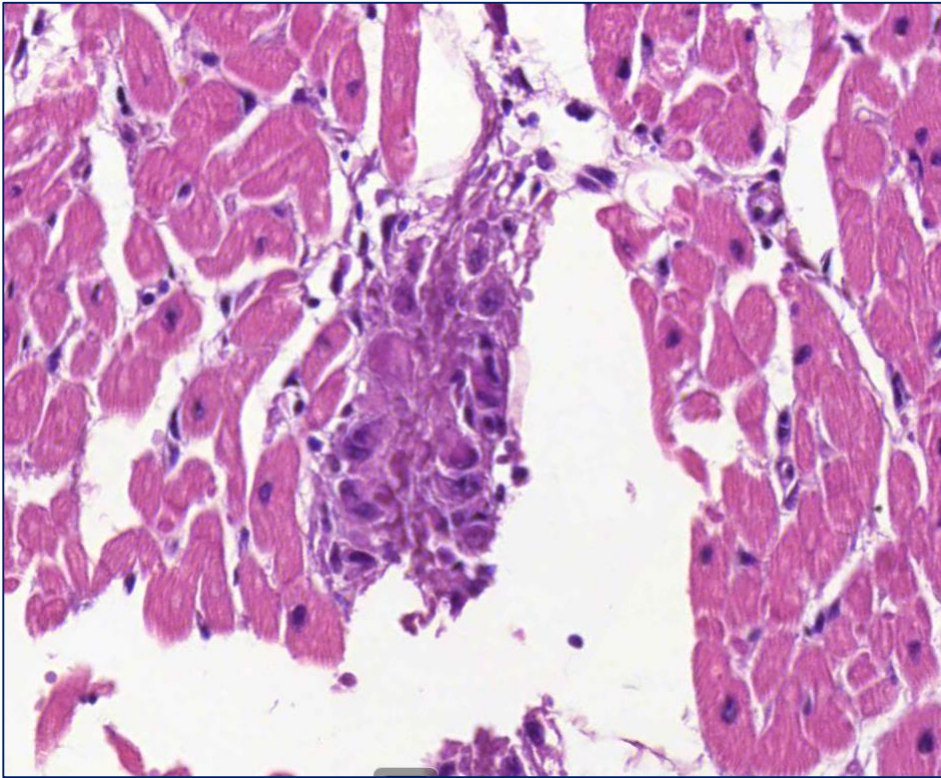


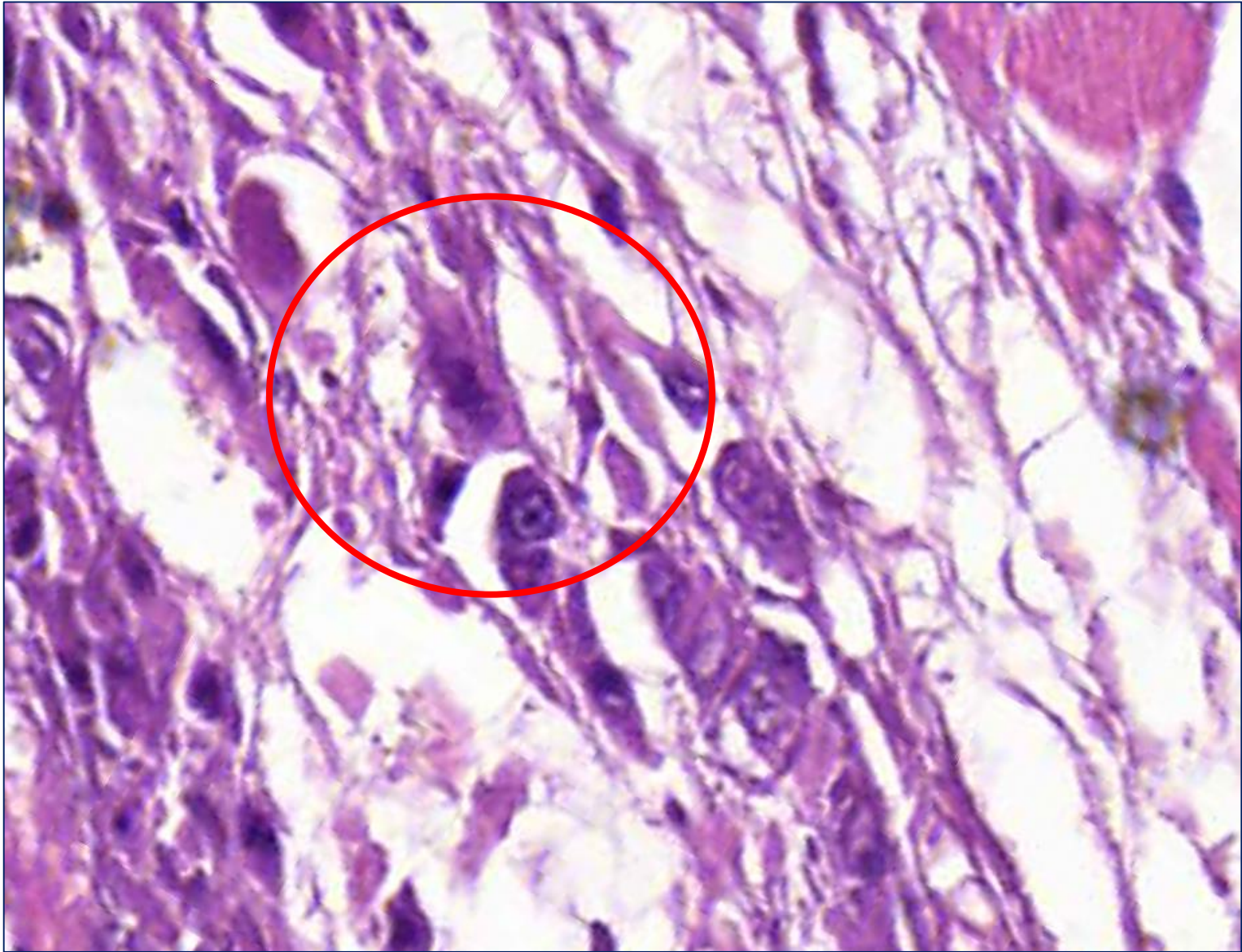


Pericarditis

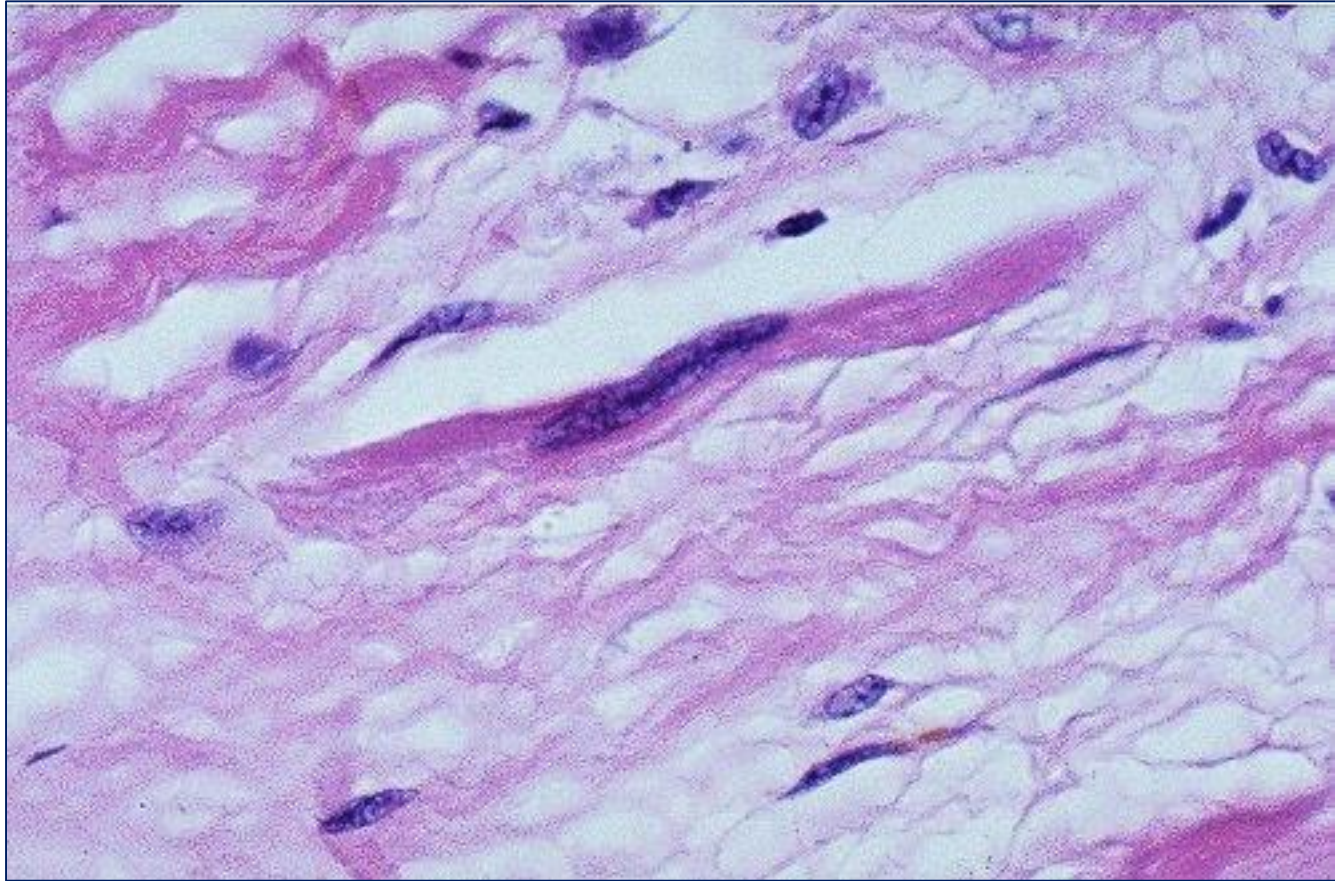


Aschoff-Talalajev nodules

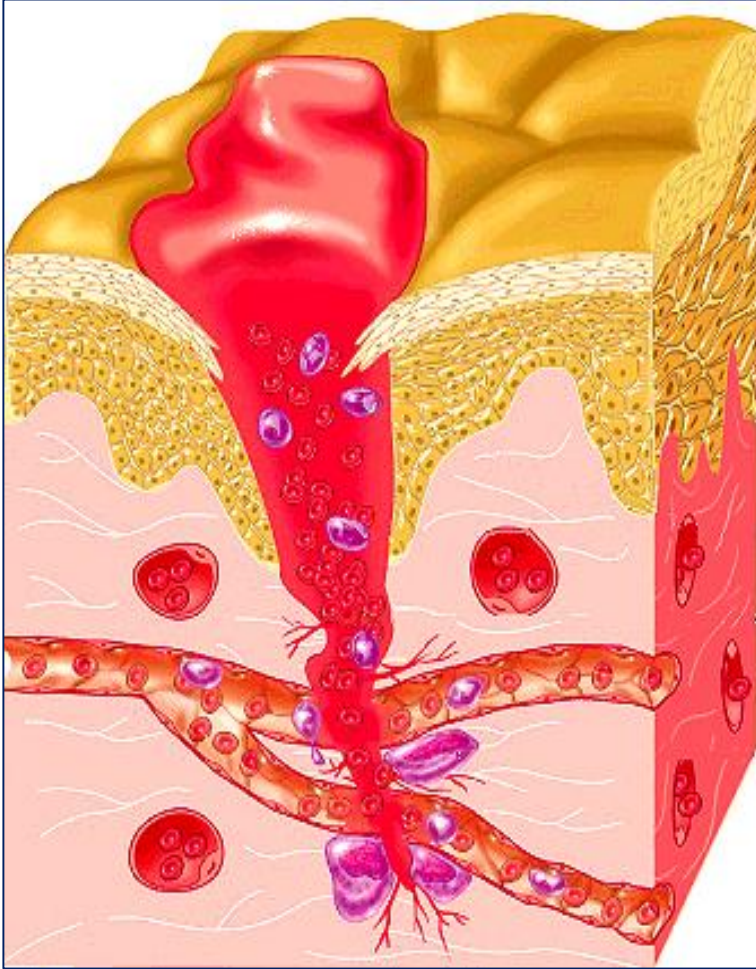




Anitschkow cell



Wound healing - by secondary intention



Granulation tissue



