



# Semmelweis University Faculty of Dentistry Department of Community Dentistry

Head of Department: Dr. Peter Kivovics associate professor

<http://semmelweis-egyetem.hu/fszoi/>

<https://www.facebook.com/fszoi>



## Prosthodontic Aspects of Emergency Dentistry



**Dr. Mercédesz Orsós**  
**MsC, PhD student**



# Questions

- Really part of emergency dentistry?
- To do, or not to do?
- Responsibility?
- Dental lab background?





# Emergency cases

- Inflammations under prosthodontic appliances
- Temporary solutions
- Broken bridges and removable dentures
- Loose crowns and bridges
- Lesions on oral mucosa



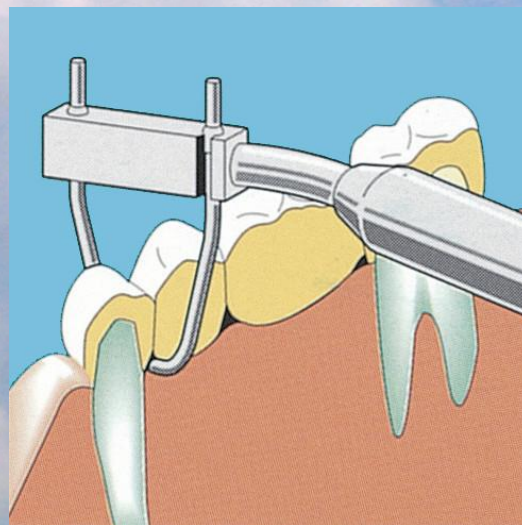


# Remove fix prosthodontics





# Remove fix prosthodontics



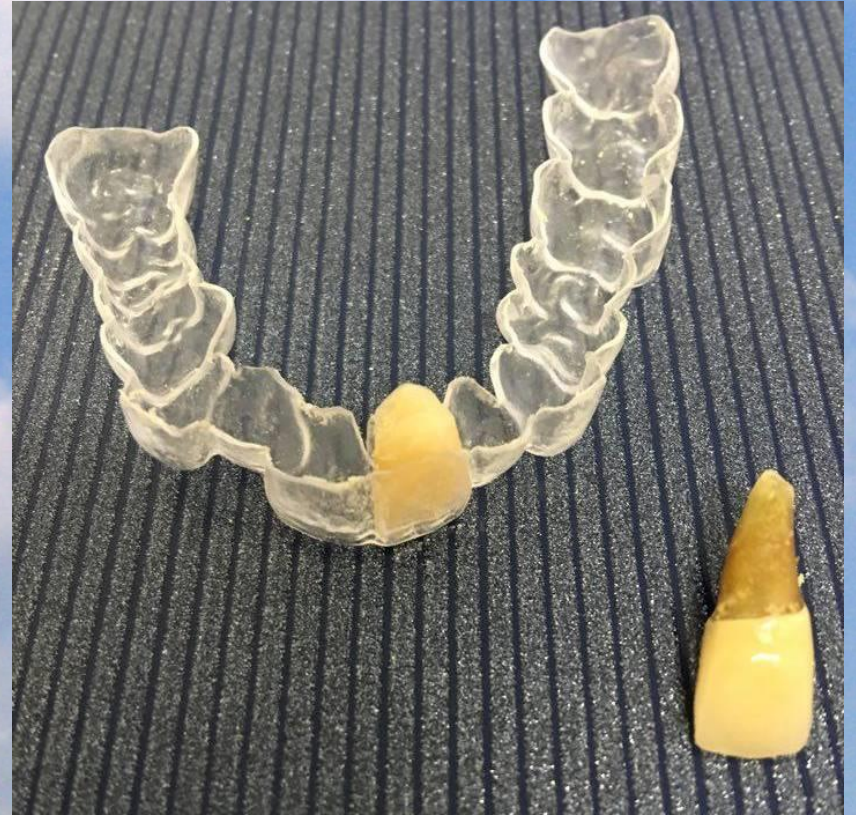
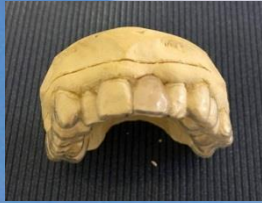


# Temporary solutions





# Temporary solutions





# Temporary solutions





# Crown and bridge failures

## Fracture of porcelain

- Mechanical and design failures
- Changes in abutment tooth
- Inadequat lab technique



Porcelain fused to metal repair



# Broken dentures

Removable prosthetics

- Broken dentures
- Broken clasps
- Loose artificial tooth





# Loose crowns and bridges

Recement

- Temporary
- Definitive

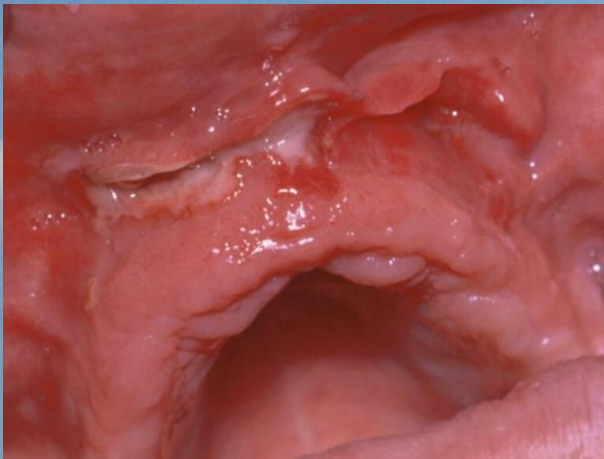




# Oral mucosa

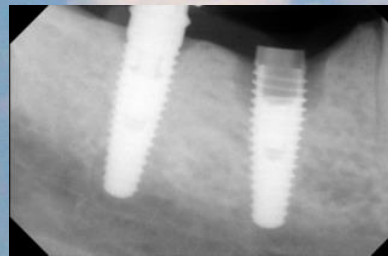
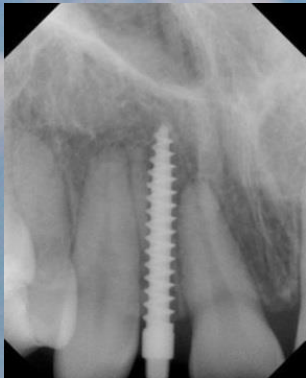
Decubitus

Granuloma fissuratum

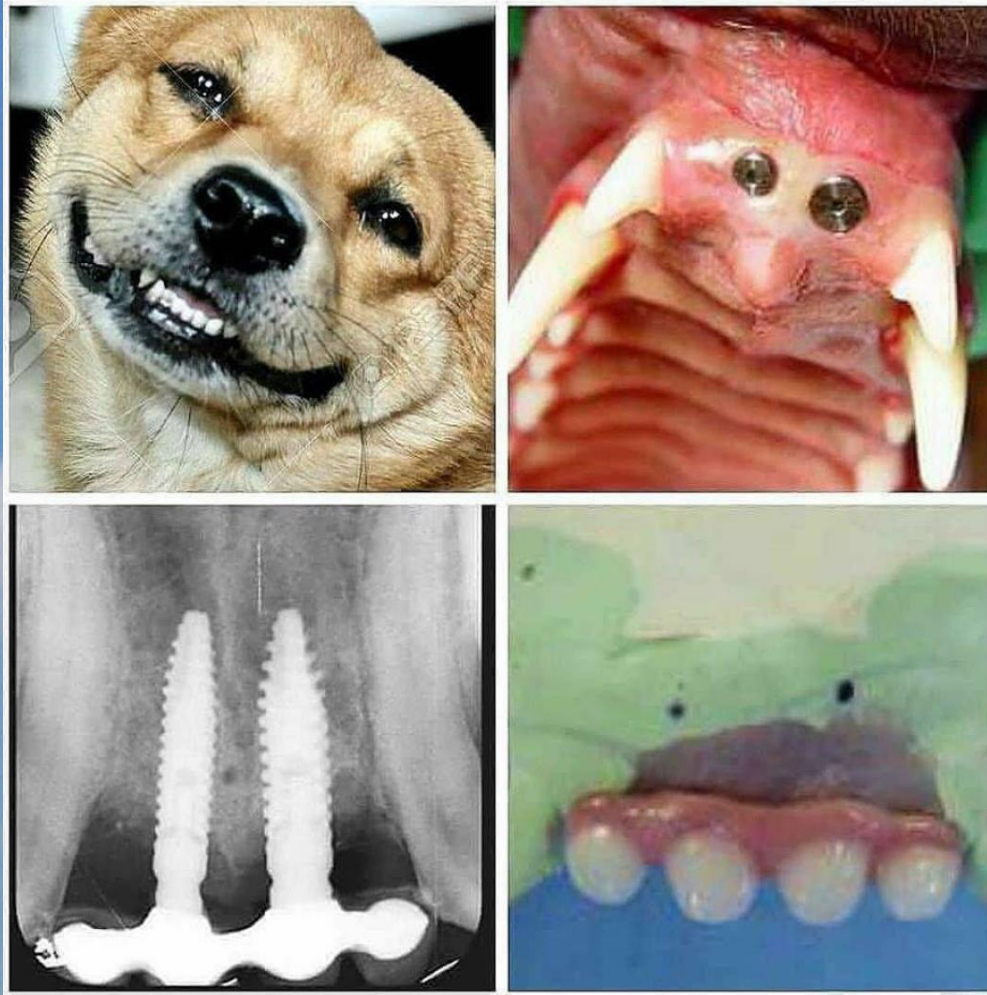




# Implant aspects







**Thank you for your kind attention!**