

# Einzementierung festsitzender Zahnersätze

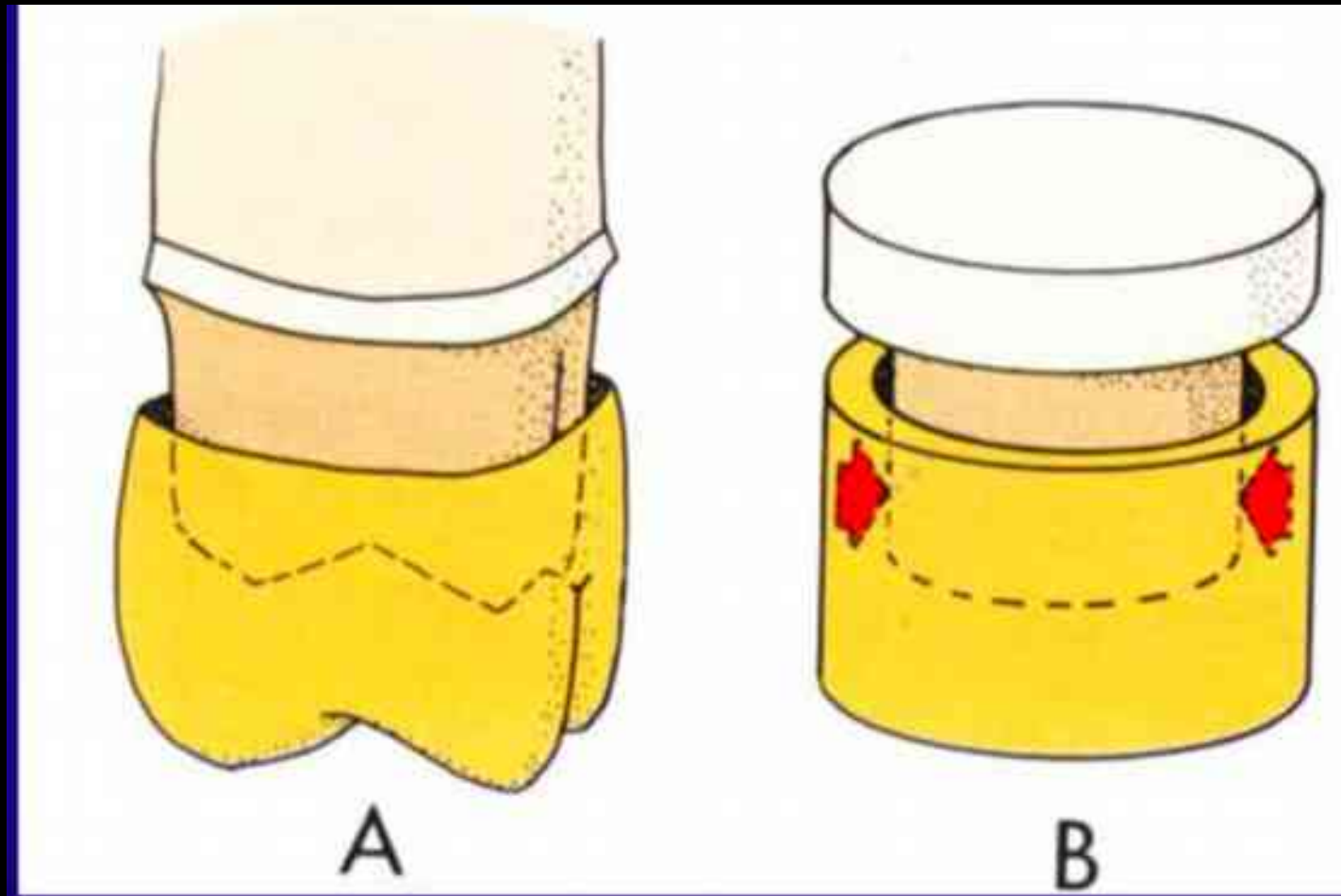
Jász Máté M.D;  
D.D.

Semmelweis





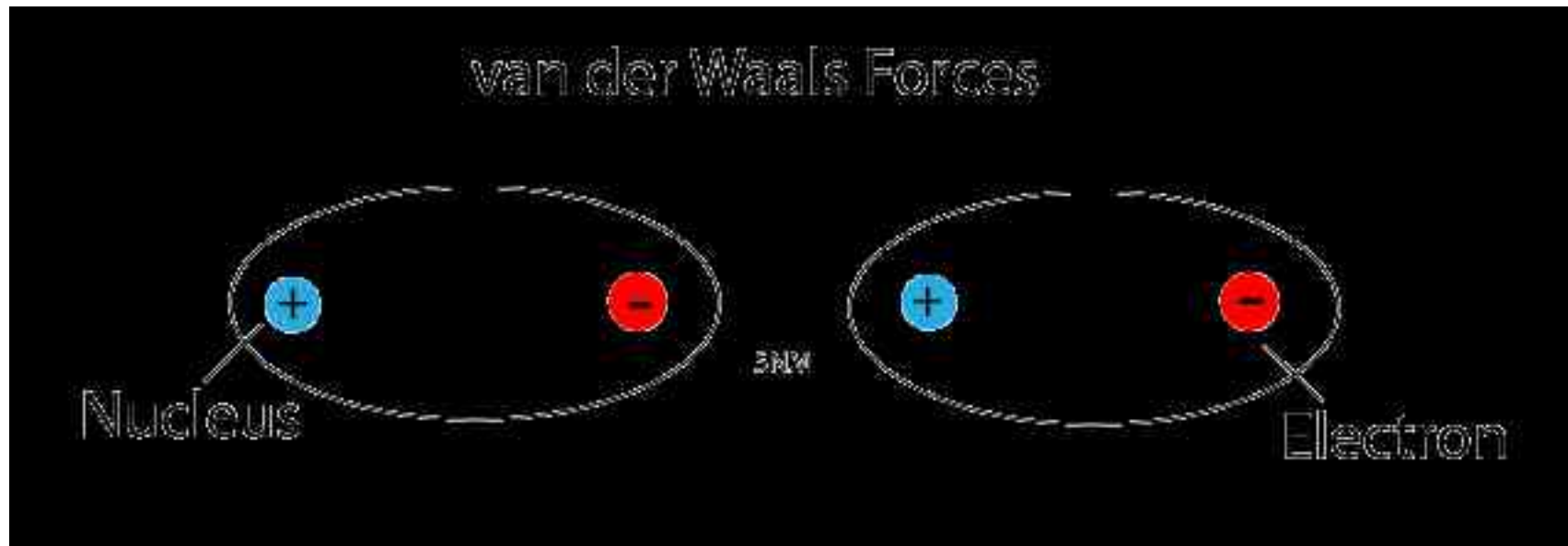
# Mechanische Retention







# Van der Waals Bindung

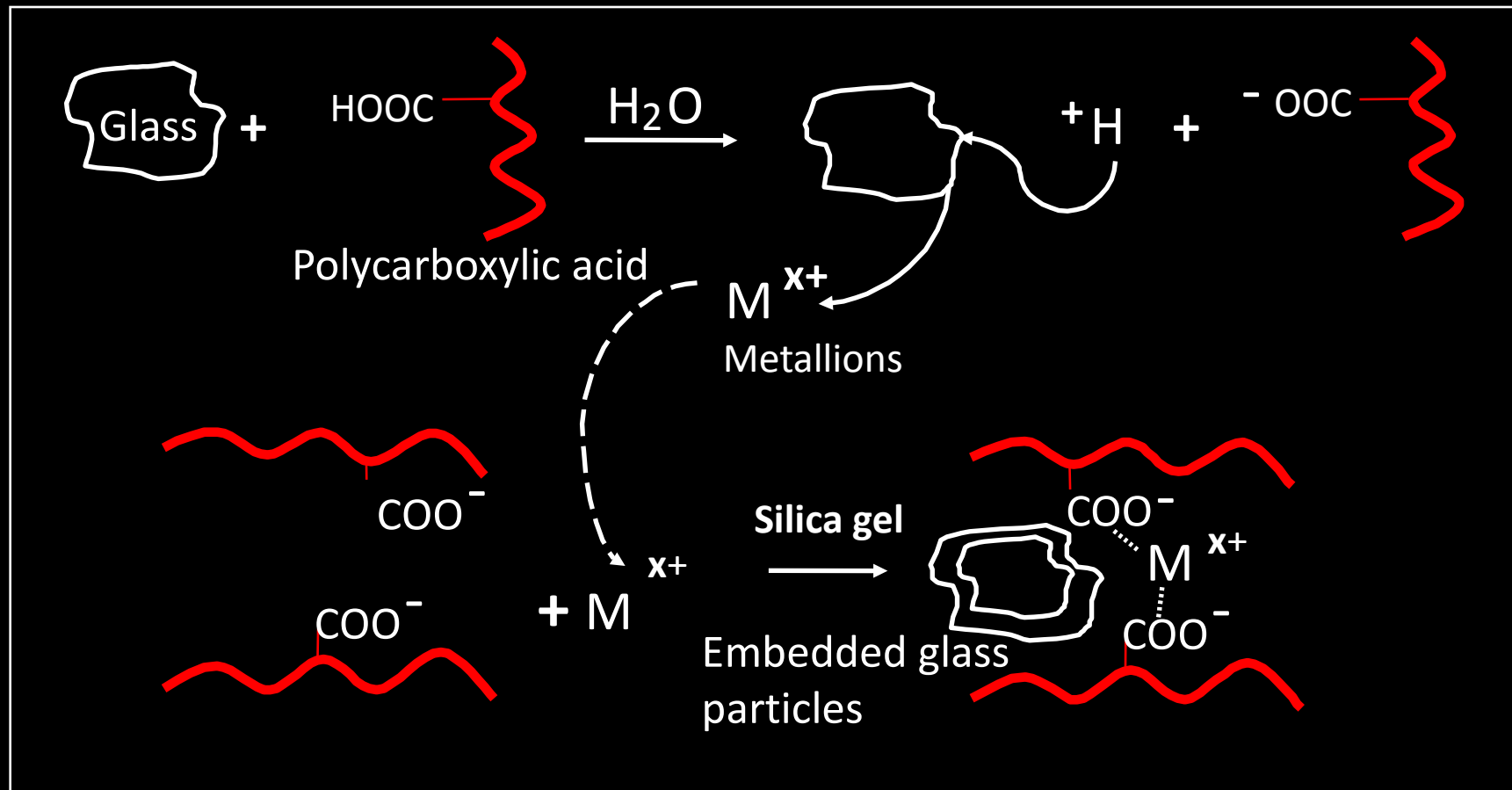






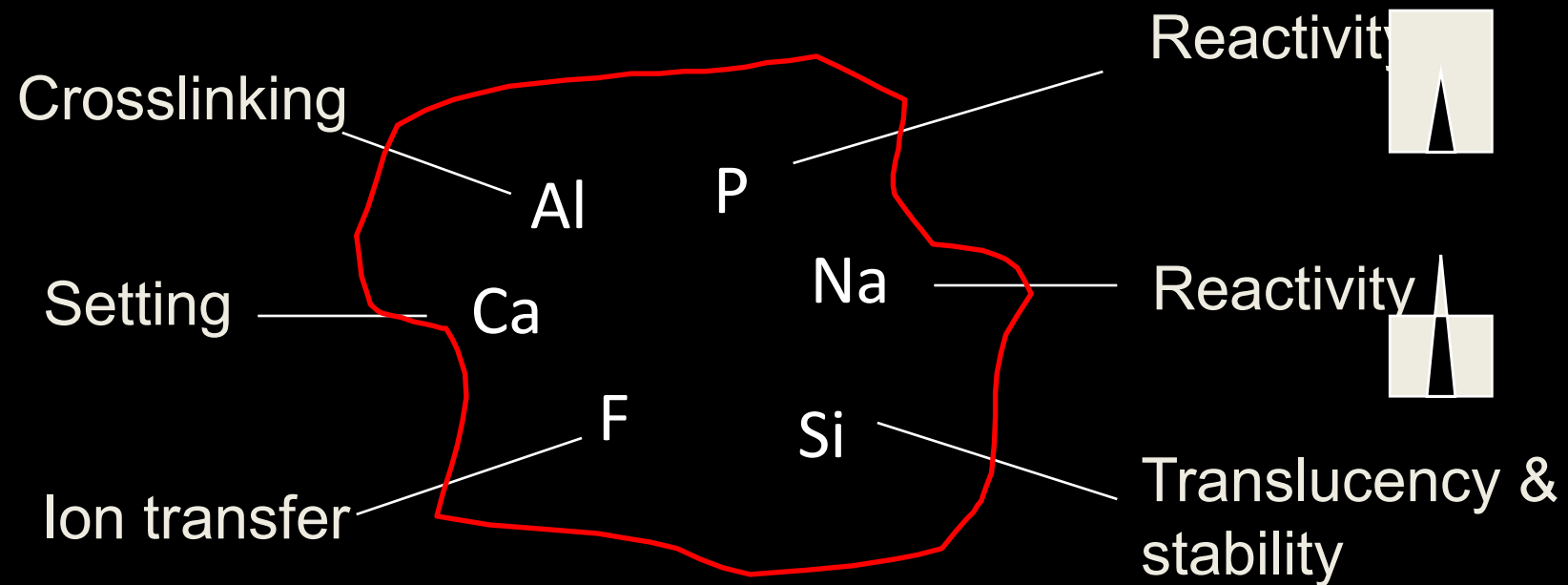


# Glass Ionomers - Setting Reaction



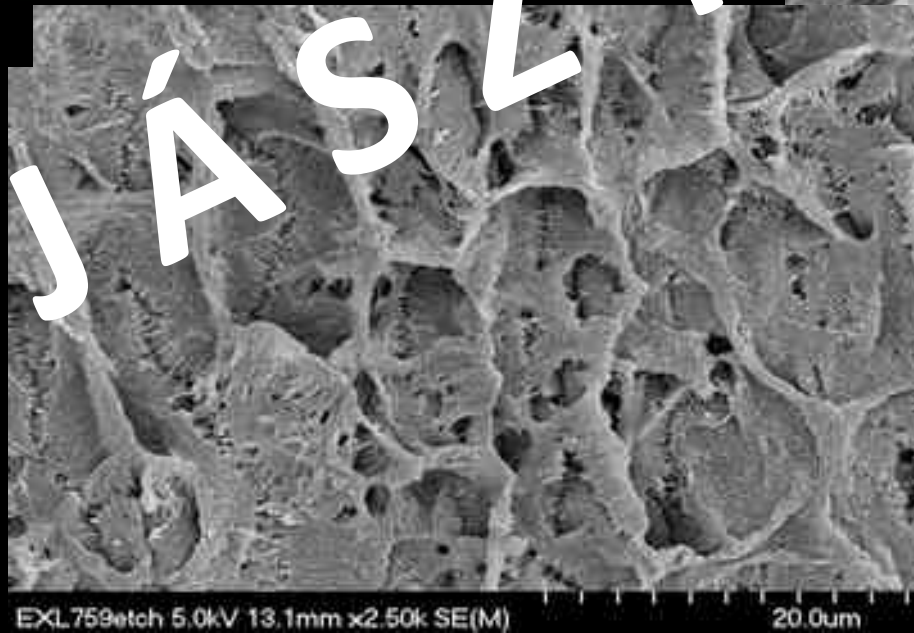
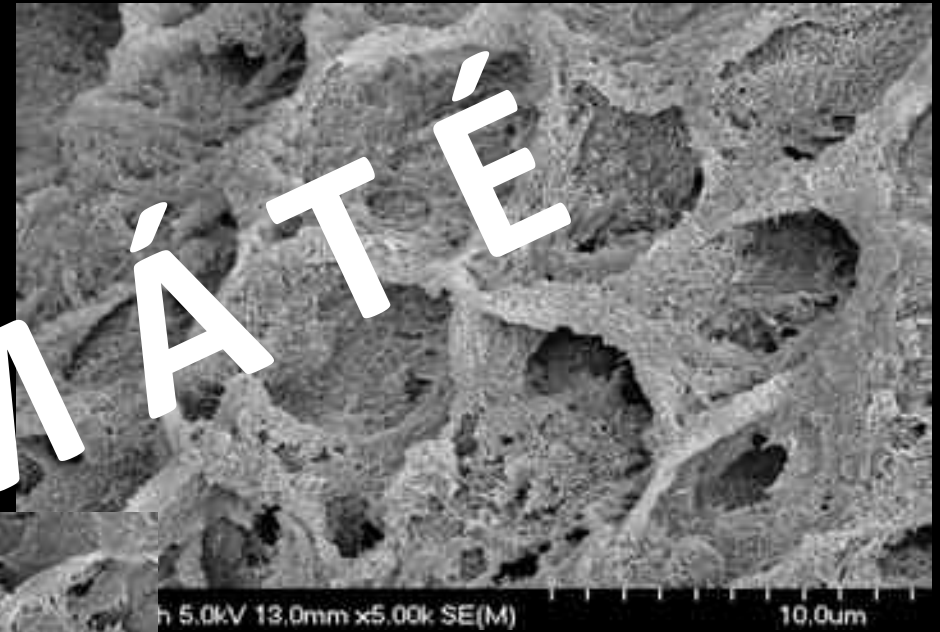
# Role of the glass

- Release of crosslinking ions
- Reinforcement as a filler



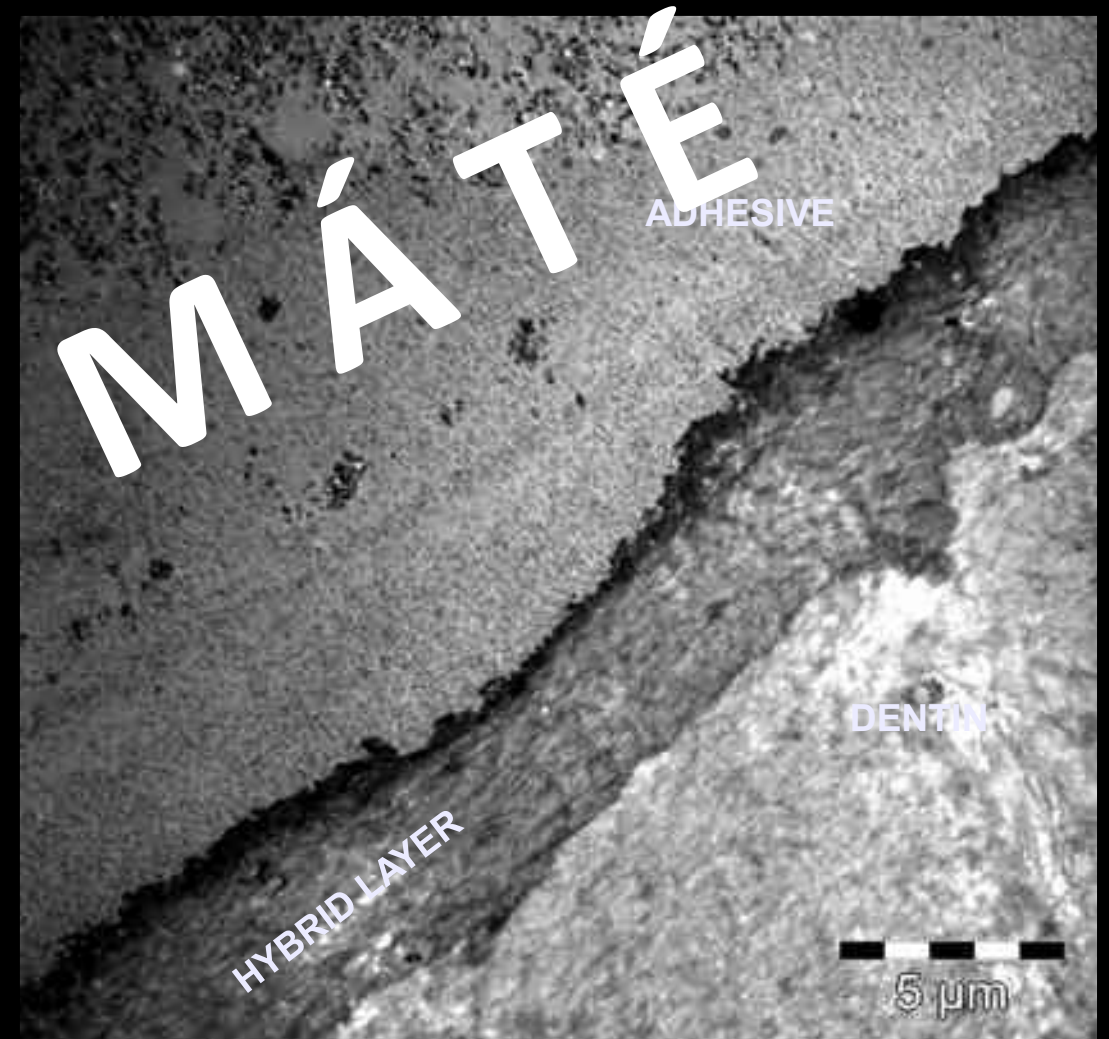
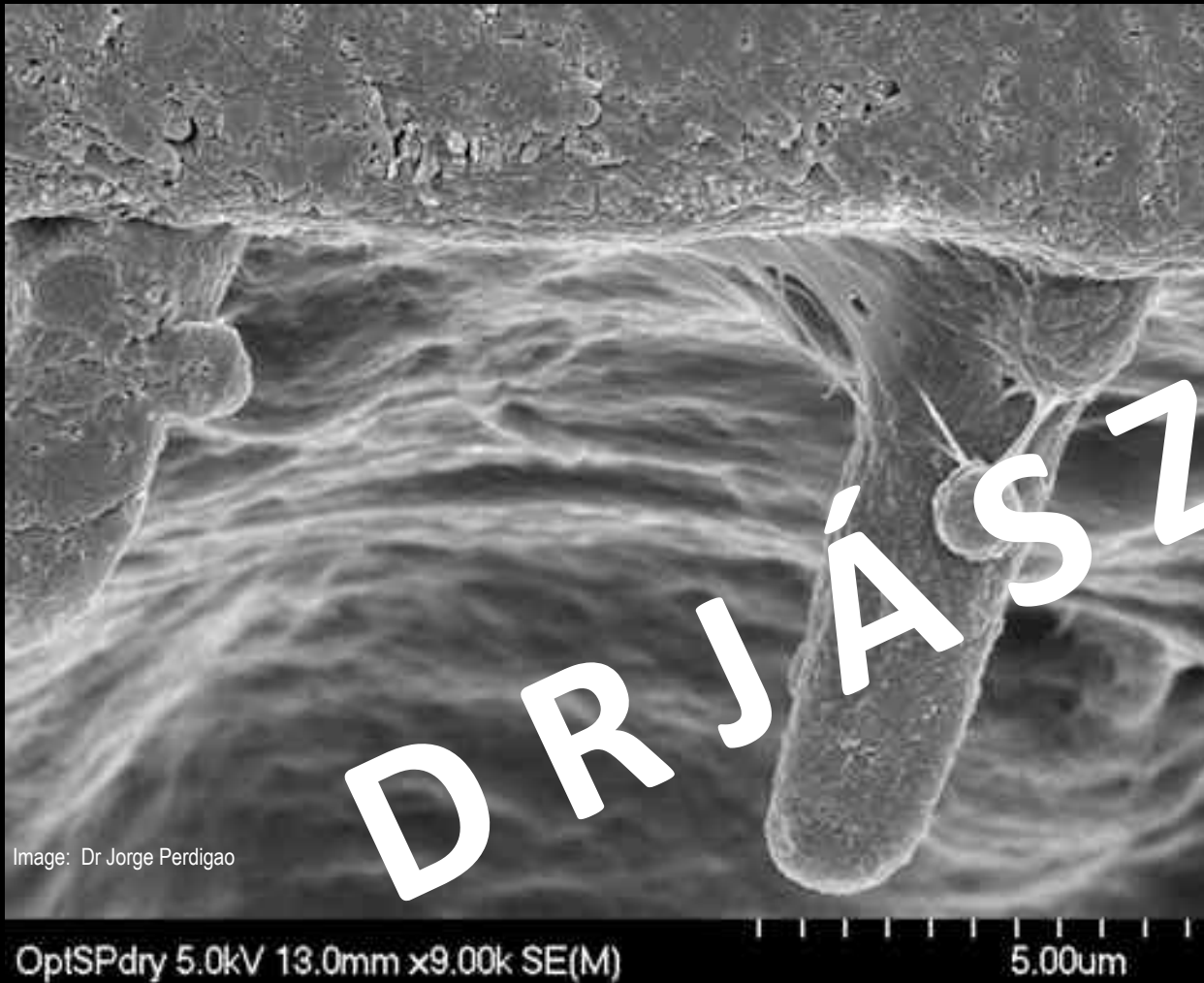


# Schmelzadhesion



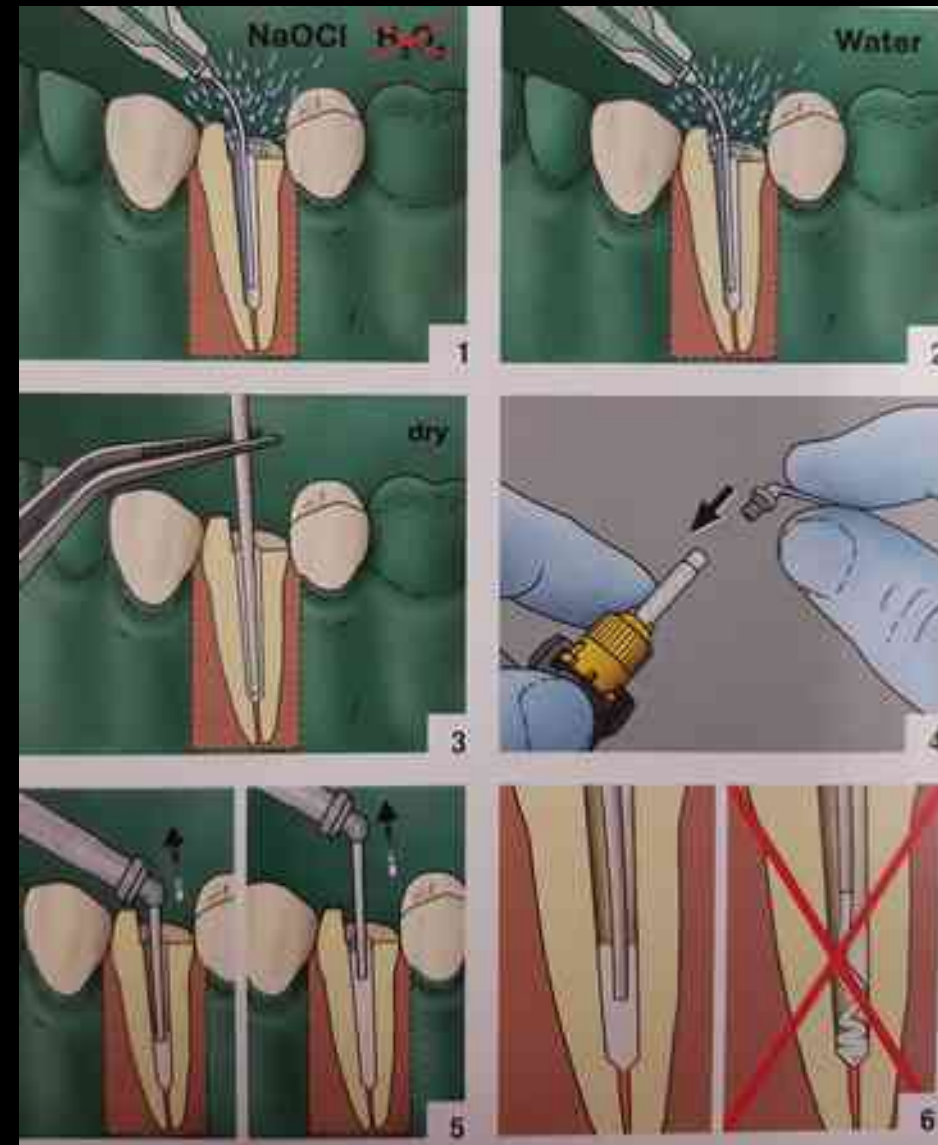
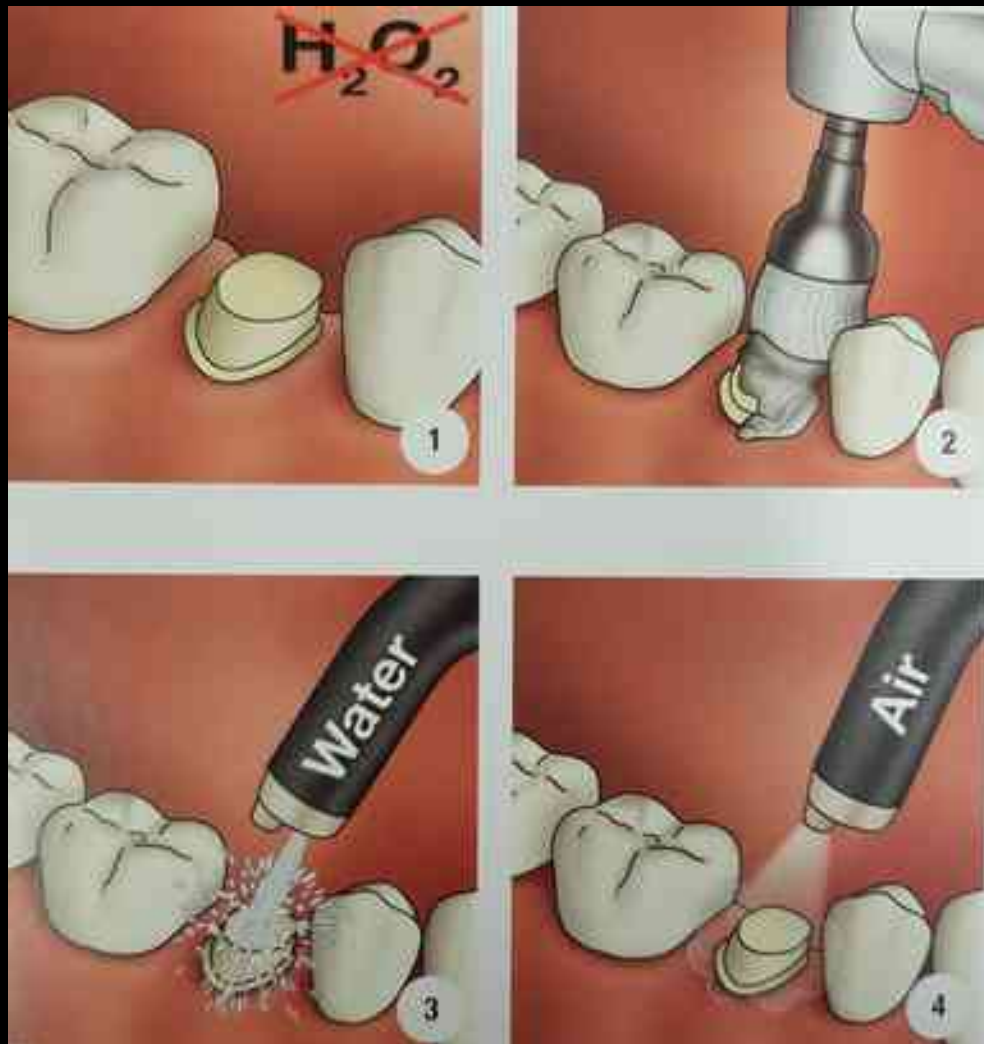
DRJÁSZMÁTÉ

# Dentin adhesion



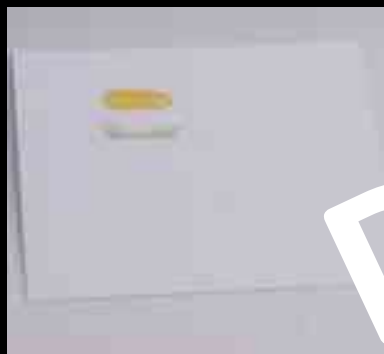
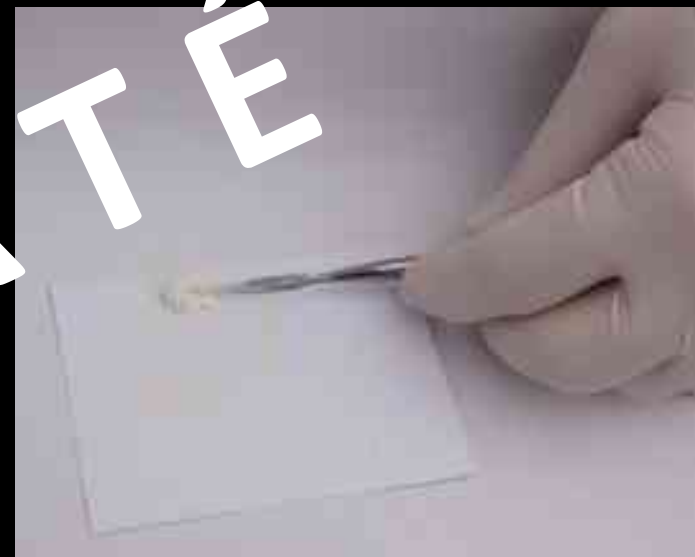
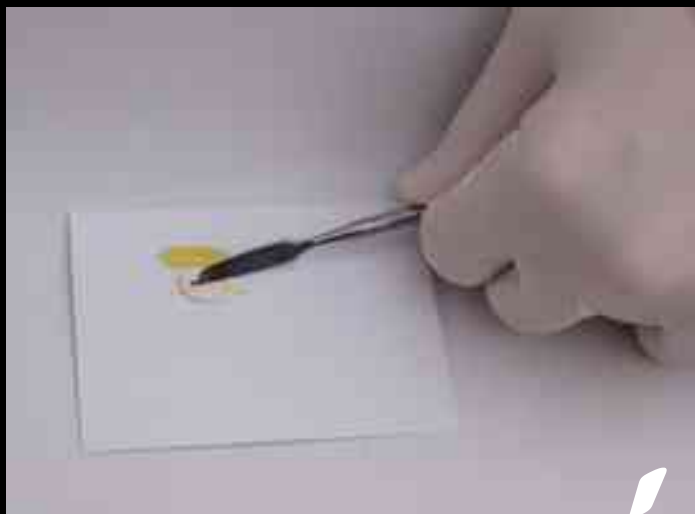


# Vorbereitung





# Provisorischer Zement



DRJÁSZMÁTÉ

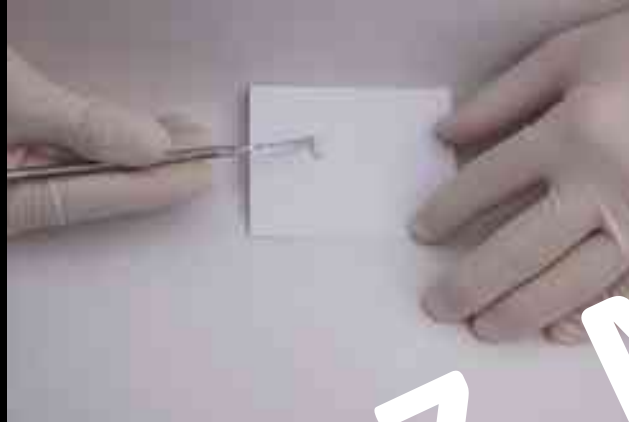


# Glasionomer Zement

DR JÁSZ MÁTÉ

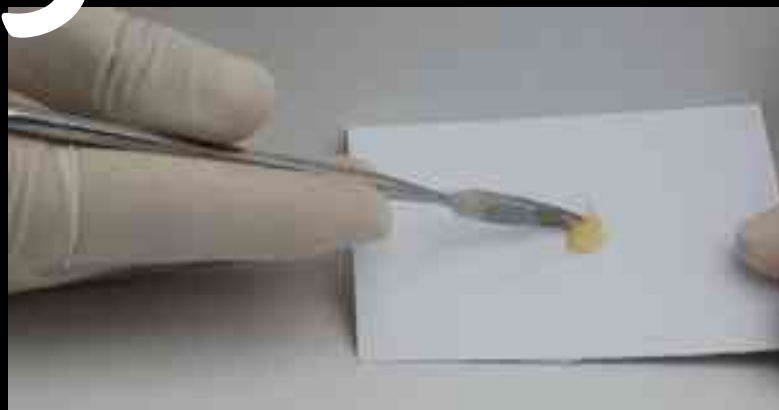
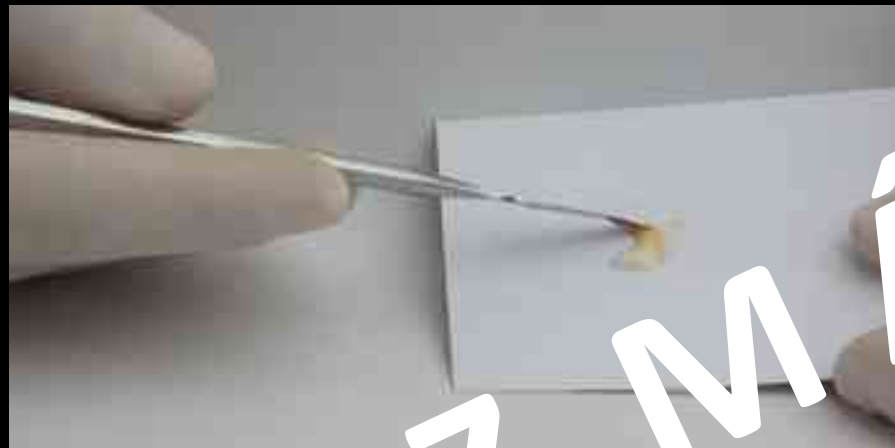


# Resin modifiziert e Glasionomer Zement



DRYÁSZMÁTÉ

# Adhesiv Zement

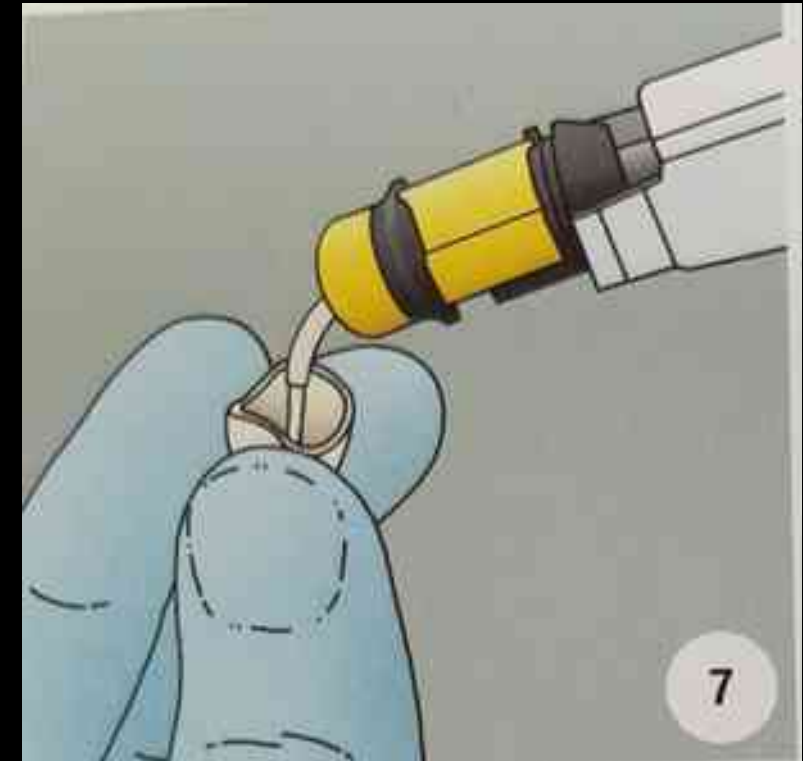
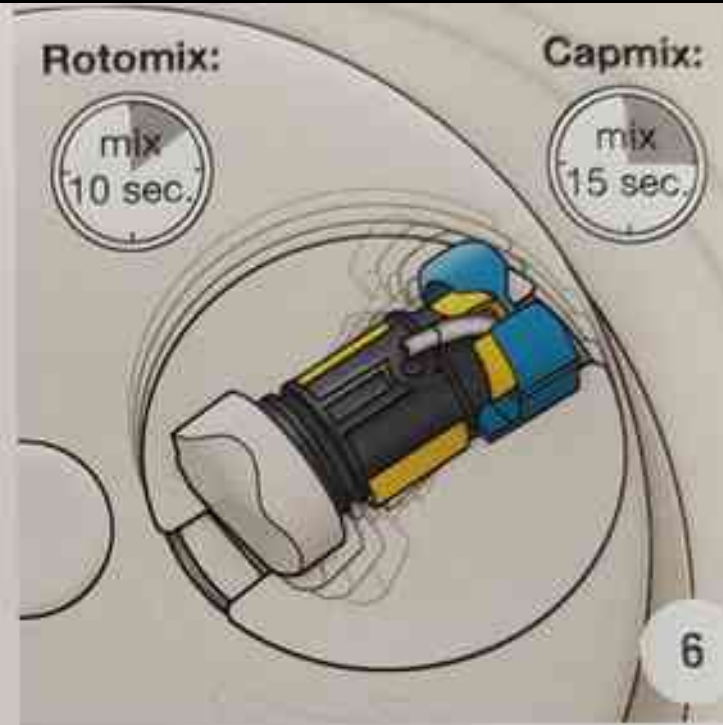
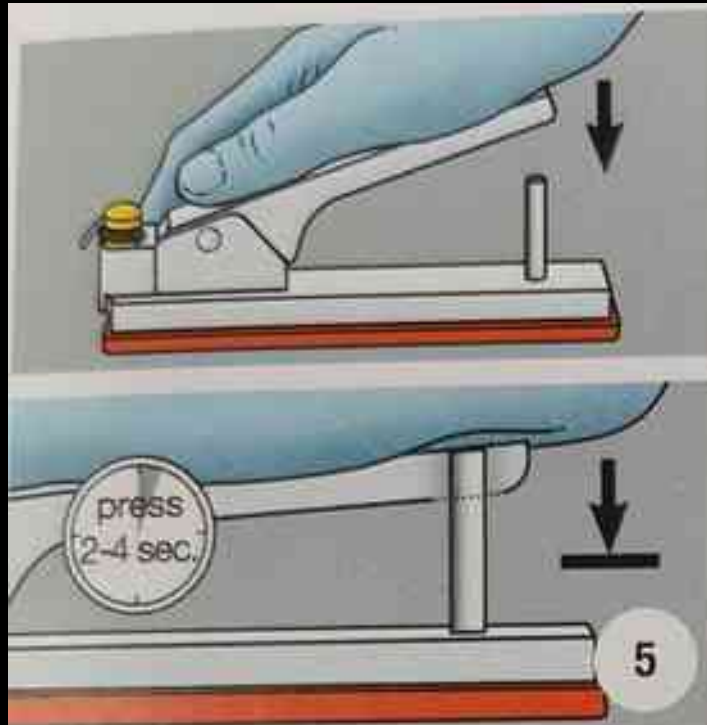


DRJÁSZMÁTÉ

# Adhesiv Zement - Automix



# Adhesiv Zement - Kapsule



# Adhesiv Zement - Kapsule



DRJ ÁSZ M ÁT É

**Recommendation by cement & indication**

**Metal/Metal based**

Inlays/Onlays

Crowns/Bridges

Endodontic Posts

Maryland Bridges

**Glass ceramics incl. Lithium-Disilicate**

Inlays/Onlays

Partial Crown/Table Tops

Crowns/Bridges

Veneers

**Oxide Ceramics (e.g. Lava zirconia)**

Crowns/Bridges

Endodontic Posts

Maryland Bridges

**Resin Composites & Resin Nano Ceramics**

Inlays/Onlays

Crowns

Endodontic Posts (e.g. RelyX Fiber Post)

Veneers

Highly recommended

Recommended

Not indicated

Highly recommended	Highly recommended
Highly recommended	Highly recommended
Highly recommended	Highly recommended
Highly recommended	Highly recommended
Highly recommended	Not indicated
Highly recommended	Not indicated
Highly recommended	Not indicated
Highly recommended	Not indicated
Highly recommended	Not indicated
Highly recommended	Highly recommended
Highly recommended	Highly recommended
Highly recommended	Highly recommended
Highly recommended	Not indicated
Highly recommended	Not indicated
Highly recommended	Not indicated
Highly recommended	Not indicated
Highly recommended	Not indicated