

CELIAC DISEASE (A DISEASE IN A DISGUISE)

András László MD, Ph.D
Semmelweis University
III. Internal Medicine Clinic
Gastroenterology Outpatient Dept.

GLUTEN (FLOUR) SENSITIVITY

- Celiac disease
- Gluten sensitive enteropathy
- Non-tropical sprue

HOW IS IT DEVELOPED

- Genetic base (HLA DQ2, DQ8)
- Environmental factor (gluten)
- Antibodies (EMA, tTG) – not food allergy!
- Small bowel villus atrophy

HISTORY OF IT'S DISCOVERY

- Dicke Dutch pediatrician
- World War II.– children with diarrhea, melon like belly has gotten well!
- Poverty -
 - potato, rice instead of bread

FREQUENCY

- Countries, which started later with agriculture:
Ireland, Scandinavia: 1:6000
- East-Europe: 1:85 – 1:200

Is it a disease of children?

Breast-feeding– later meeting with gluten?

No detected difference!

CONSEQUENCIES

Small bowel villus atrophie



Absorption disturbance– iron, folic acid,
vitamins (B12, D, K), kalcium, etc.

Anemie, osteoporosis, diarrhea,
haemophilia, abortion, liver function
disturbance (GPT-ALAT elevation),
„melon-belly“, losing weight, etc.

ASSOCIATED DISEASES

- Frequent abortion
- Epilepsy, depression
- Malignant tumors– lymphoma!
- Other AI diseases:
Hashimoto, 1TDM, etc.

The classic celiac skin issue, dermatitis herpetiformis.



By permission of Mayo Foundation for Medical Education and Research.
All rights reserved.

ICEBERG:

MANIFEST CELIAC D.

SYMPTOM +, MUCOSA DAMAGE +, TTG+

QUIET CELIAC D.

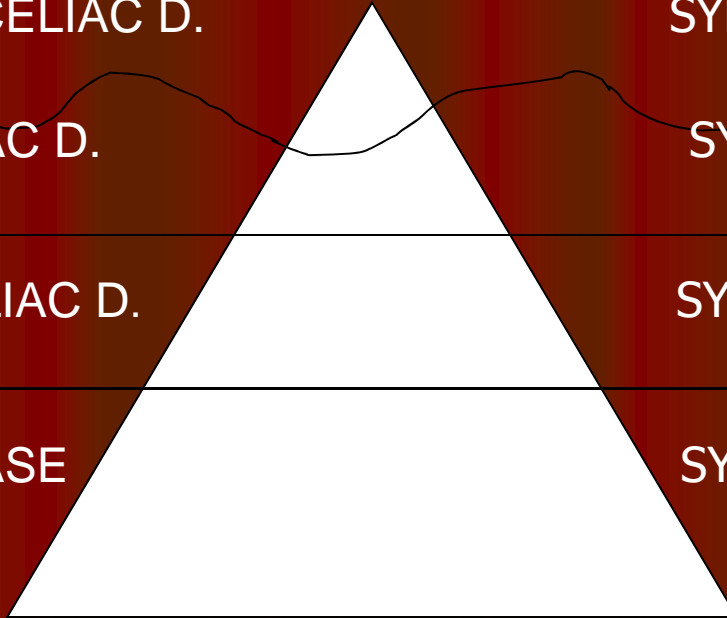
SYMPTOM -, MUCOSA DAMAGE +, TTG+

LATENT CELIAC D.

SYMPTOM -, NORMAL MUCOSA, TTG+,

GENETIC BASE

SYMPTOM -, NORMAL MUCOSA, TTG -,
ONLY HLA DQ2, DQ8

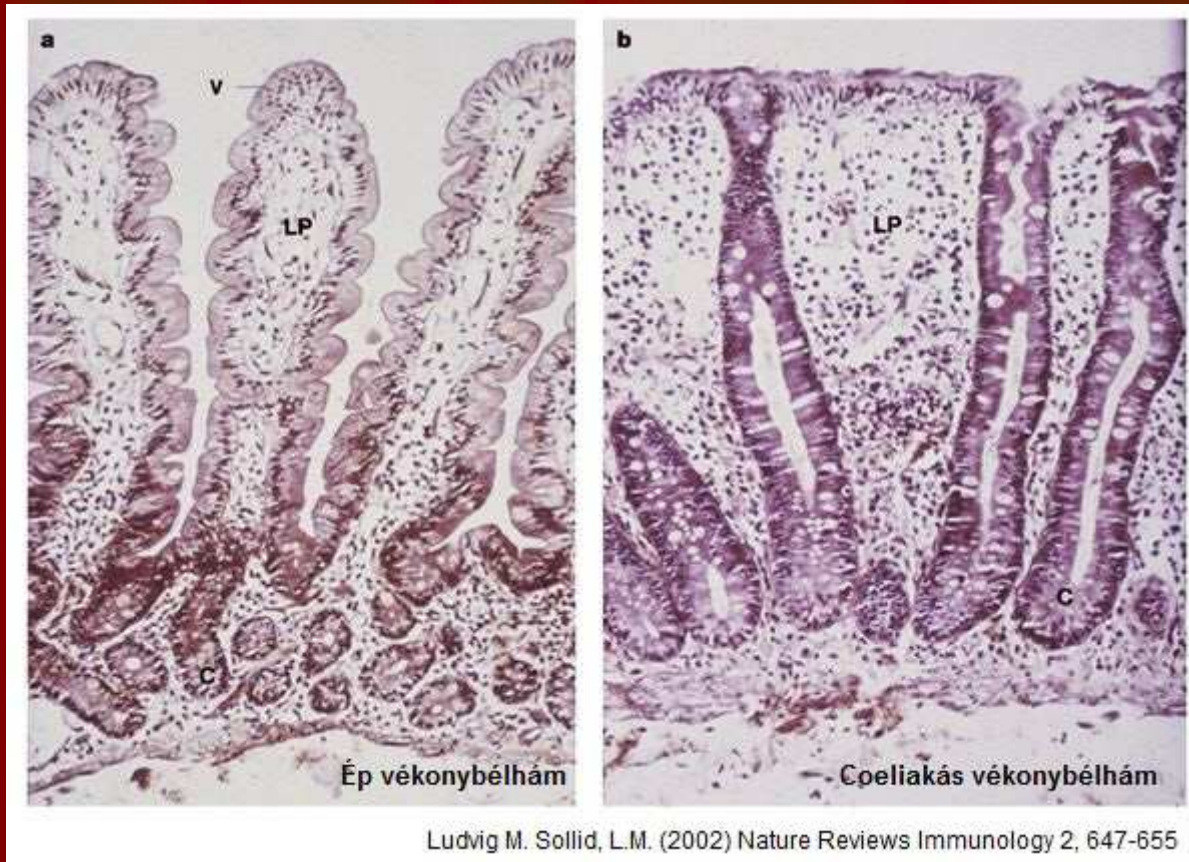


DIAGNOSIS

- Clinical picture – complains and symptoms
- Laboratory (serological) examinations:
antigliadin, EMA, tTG – IgA, IgG
- Histology – villus atrophy
- Genetics

- If the patient is already on diet?

VILLUS ATROPHY



SCREENING

- Family members: 10-40%
 - Father – son: 10%
 - Mother – daughter: 40%
 - Brothers and sisters: 6/7, 3/12

TREATMENT

DIET!

Giving up every gluten
containing food (GRAIN!) :

NO: wheat, rye, barley,

oat(?) – contaminated with traces

YES: potato, rice, maize, soy

The pt. has to double-check the components
at every complex food

Literature!

Non coeliac gluten sensitivity

Serological negativ villus atrophy

?

Thank you for your attention!

