

**Semmelweis University**  
**Department of Anatomy, Histology and Embryology**

**Faculty of Dentistry**  
**1st year 1<sup>st</sup> semester**

**MACROSCOPIC ANATOMY AND EMBRYOLOGY I**  
**HANDBOOK**  
**September 2024**

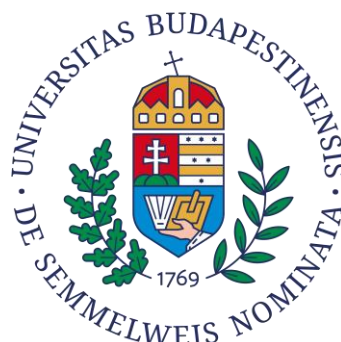


**Dr. Andrea D. Székely**  
**Associate Professor**

Course Director of the English Medicine and Dentistry Programs

**Dr. Gábor Gerber**  
**Full Professor**

Head of the Anatomy, Histology and Embryology Subject in the Faculty of Dentistry  
Dean of the Faculty of Dentistry



# Macroscopic Anatomy and Embryology for Dentistry students

## TEACHING DEPARTMENT:

SEMMELWEIS UNIVERSITY

Department of Anatomy, Histology and Embryology

Budapest, Tűzoltó utca 58.

H-1094 Budapest

<http://semmelweis.hu/anatomia>

## LEARNING OBJECTIVES

**Aims of the lectures in anatomy:** Presentation of the important and/or complicated chapters such as introductory chapters, thorax, pelvis, hand, foot, skull, heart, chapters of the visceral organs, central nervous system, organs of special senses, topographical anatomy.

**Aims of the practical sessions in the dissecting room:** Based on the weekly programs (see separate), students will both observe prosected cadaver specimens (bones, joints, muscles, viscera, brain) and perform dissections on parts of, or on an entire, embalmed cadaver.

Students are supervised by the lab instructors. Bones, joints, muscles and peripheral nervous system will be primarily taught in the dissecting room.

Embryology describes the intrauterine development of a human embryo/fetus and introduces the development of the organ systems.

**LECTURES:** First semester: 1x 45 min; second semester: 3x 45 min.

**PRACTICAL CLASSES:** First semester: 5 x 45 min; second semester: 5 x 45 min.

**ECTS CREDITS:** Altogether 14 (first semester: 6; second semester: 8).

**MIDTERM TESTS:** Oral

### ACCEPTENCE OF THE SEMESTER:

Active participation in dissection room sessions is obligatory for every student. Students should attend at least 75% of the scheduled hours to gain a signature proving the validity of the semester. Absences are therefore limited in **25%**. Attendance will be recorded in the dissection room classes. Successful passing of at least one of the midterm tests.

**TYPE OF EXAMS:** oral and written

First semester: semifinal examination, second semester: final exam

**Semifinal and final examinations consist of written and oral (practical and theoretical) parts**

1. Written pretest (e-learning module – access to SeKA account is obligatory)
2. Macroscopic Anatomy (identification of structures on true anatomical specimens) including relevant theoretical questions

## COURSE DESCRIPTION

### Macroscopic Anatomy and Embryology I.

**Lectures and dissection classes**

**Subject matter :** Macroscopy and clinically oriented anatomy of the parts of the musculoskeletal system, i.e. osteology, arthrology and myology, together with the vascular and nervous supply of the limbs and the trunk. Skull (viscerocranium, neurocranium). Cavities, muscles of the head & neck region. Macroscopy of the brain and spinal cord, membranes (dura, arachnoid and pia mater). General Embryology describes the intrauterine development of a human embryo/fetus and introduces the development of the locomotor system.

**Credits: 6**

**Prerequisite:** none

# Academic Year 2024/2025

## Faculty of Dentistry

### ED I. Macroscopic Anatomy and Embryology I.

Weeks	Lectures <i>Mondays 15.00 -15.45 Lenhossék lecture room</i>	Lecturers	Dissection room classes <i>Mondays 16.00-17.45 and Thursdays 13.00-15.00</i>
<b>Week 1</b> 09. 2-6.	1. The role of anatomy in the medical curriculum. Terminology. General arthrology and myology	Gerber	General introduction to practical work in the dissection room, tools and rules. Anatomical planes and directions Bones of the upper limb and the girdle, shoulder joint
<b>Week 2</b> 09. 9-13.	2. Clinical anatomy of the upper limb	Lendvai	Muscles of the upper limb/girdle. Dissection Elbow joint
<b>Week 3</b> 09. 16-20.	3. Clinical anatomy of the lower limb	Shahbazi	Muscles of the elbow joint Joints and muscles of the hand
<b>Week 4</b> 09. 23 - 27.	4. Gametes, fertilization, cleavage, blastulation	Székelly	Dissection of the muscles, vessels and nerves of the upper limb (branches of the axillary a+v, brachial plexus) Lower girdle, pelvis, hip joint, bones of the lower limb
<b>Week 5</b> 09.30 – 10.4.	5. Implantation, structure of the placenta, placental circulation. Fetal membranes	Tóth	Lower limb, knee joint + muscles. Bones, joints and ligaments of the foot Femoral artery, veins of the lower limb Cadaver and free limb dissection
<b>Week 6</b> 10. 7-11.	6. Gastrulation, formation and derivatives of germinal layers. Folding of the embryo. Body axes, cranio-caudal and dorsoventral differentiation.	Kozsurek	Sacral plexus, lumbar plexus Cadaver and free limb dissection <b>Midterm test 1 (oral, obligatory)</b> <b>Upper and lower limbs</b>
<b>Week 7</b> 10. 14-18.	7. Components, muscles, joints, ligaments and movements of the vertebral column. Ribs, components and movements of the thorax. Diaphragm	Rácz	Bones, joints, ligaments and muscles of the vertebral column Muscles of the trunk, components of the body wall, rectus sheath, hernia canals, Diaphragm Bones and spaces of the skull
<b>Week 8</b> 10. 21-25. <i>Oct.23. is a National Holiday</i>	8. Components of the abdominal wall. Rectus sheath. Subinguinal hiatus. Inguinal canal. Adductor and femoral canals	Vereczki	Internal and external skull bases Development of the skull Embryology consultation
<b>Week 9</b> 10. 28. - 11. 1. <i>Nov. 1 is a National Holiday</i>	9. Bony framework of the skull: spaces of the viscerocranium.	Shahbazi	Bones and spaces of the skull Facial skeleton, mandible. Orbit, nasal cavity, pterygopalatine fossa Embryology consultation
<b>Week 10</b> 11. 4-8.	10. Introduction to the study of the nervous system. General organization of the central and peripheral nervous systems. Macroscopy of the telencephalon, diencephalon.	Rácz	Dissection of the brain, dural spaces Morphology of the brain. Blood supply, meninges, sinuses. Extra- and intracerebral CSF spaces, ventricles.
<b>Week 11</b> 11. 11-15.	11. Blood supply to the brain. Meninges, CSF, ventricles	Papp	Morphology of the brain. Blood supply, meninges, sinuses. Extra- and intracerebral CSF spaces, ventricles.
<b>Week 12</b> 11. 18-22.	12. Macroscopy of the brain stem, cerebellum and spinal cord.	Gerber	Dissection of the brain Morphology of the spinal cord
<b>Week 13</b> 11. 25 – 29.	13. Neurulation. Development of the central nervous system, brain vesicles.	Gallatz	Dissection of the brain, frontal sections <b>Midterm test 2 (oral, obligatory)</b> <b>Skull, morphology of the CNS, macroscopy of the trunk</b>
<b>Week 14</b> 12. 2-6.	14. Development of the skull, vertebral column and the limbs	Gerber	Revision, embryology consultation

# Macroscopic Anatomy and Embryology I.

## SUBJECT MATTER OF THE 1<sup>ST</sup> SEMESTER

**Macroscopy** and clinically oriented anatomy of the parts of the musculoskeletal system

- osteology
- arthrology
- myology (except for the muscles of mastication, facial expression and neck muscles)
- vascular\* and nervous supply of the limbs and the trunk  
(\*arteries starting from the brachial or femoral arteries)

**Skull** (viscerocranium, neurocranium).

**Macroscopy of the brain and spinal cord**

- blood supply
- meninges (dura, arachnoid and pia mater).

**General Embryology**

## ANNOUNCEMENTS

**Semester acceptance (i.e. signature):**

1. Active participation in dissection room lab sessions is obligatory. Students should attend at least **75% of the scheduled hours**, including the obligatory midterm tests, to gain a signature proving the validity of the semester. Absences are therefore limited in **25%**.
2. At least one of the two midterm tests should **be successful (with at least a mark 2)**.

### MIDTERM TESTS

During the semester, both practical and theoretical knowledge will regularly be evaluated. Anatomy midterms are held as **oral/practical tests**. The test will include both identification of several structures on the specimen and theoretical questions related to the subject. The results of all tests will appear on the personal achievement cards.

Midterm tests are obligatory tests, they can only be done on the day specified previously, and they cannot be upgraded. Attendance at, and the **passing of at least one of the midterm** tests is obligatory. Missed and unsuccessful midterms will have to be made up for / retaken during the following weeks (TBA).

#### Midterm I.

**Date:** 6th week (Thursday class)

**Topics:** Gross anatomy of the limbs, together with their girdles

Bones, joints, muscles and fasciae, action, innervation, blood supply

#### Midterm II.

**Date:** 13<sup>th</sup> week (Thursday class)

**Topics:** Skull, bones and spaces

Macroscopy of the brain and spinal cord

Muscles of the trunk (body wall); Diaphragm

- Students earning a **4** or a **5** in the **officially timed midterm tests** may request an exemption from the relevant practical part of the semifinal examination in case the mark was **earned on the official midterm date (retakes will not be counted in)**. Please note, that exemptions can only be earned in the following two topics:

1. limbs (1<sup>st</sup> midterm)
2. muscles of the trunk, diaphragm (2<sup>nd</sup> midterm)

***Every student will have to be examined from the topics of the head&neck region (skull, CNS)***

## SEMIFINAL EXAMINATION

**Topics:** Subject matter of the 1st semester

**Semifinal examinations** are composed of the following parts:

1. **written pretest** (e-learning type; moodle)
2. **oral examination** - composed of practical questions in Macroscopy to prove sufficient knowledge in the identification and full description of morphological features of relevant body parts (*skull; macroscopy of the CNS, and, **unless exempted**, limbs; muscles of the body wall, diaphragm*)

Please note, that relevant theoretical and Embryology questions may arise during the practical examination parts.

***Cadaver dissection*** – every students is required to produce a fully dissected specimen during the 1st or the 2nd semester to prove excellence and ***be exempted from the dissection part of the final examination***. The specimen will be evaluated by a departmental jury. Only those students may register for a final examination who have finished their preparatory work and it was approved by the departmental committee.



# RULES AND REGULATIONS IN THE DISSECTING ROOM

**Students are expected to be prepared for the practical work.**

Everybody is supposed to behave in the dissecting room conforming to the spirit of the site. Loud speech, out-of-place jokes and any kind of behaviour, disregarding the dignity of human corpses, should strictly be avoided.

Students should take care of the equipment of the dissecting room. Do not sit on the dissection tables or stand on the tripod stools to avoid accidents. **Fire and work safety regulations** should be maintained. The dissection room is a hazard area. **Cleanliness and order** should be kept. The **white lab coats** should be worn while in the dissection room, to protect one's clothing from contacting the cadaver specimen.

**Working** in the dissection room involves the use of **sharp and pointed tools**, injuries should be reported to the lab instructor. The technical personnel will provide first aid when necessary.

Only the members of the study group can participate in the sessions, visitors may be present only with the permission of the lab instructor. Students can leave the sessions only with the approval of the lab instructor.

**No photos, recordings or videos are to be made in the dissection room.**

Specimen preparations should be wrapped and labeled. Dissection materials of other groups or individuals should not be handled. Dissected cadaver pieces should be discarded in a designated container and discarded blades have to be collected separately.

Dissecting rooms are closed between 6:00 PM to 8:00 AM and over the weekends (with the exception of special workdays appearing in the schedule). Students may not stay in the dissecting room without supervision of lab instructor.

***IT IS STRICTLY FORBIDDEN TO*** eat, drink, to chew a gum, or to use music devices. Bags and coats should ALWAYS be left in the lockers PRIOR TO entering the dissecting room.

The lockers will have to be locked using your OWN padlocks. Please, remember to keep your valuables always on you, or lock them in the lockers. The department takes no responsibility for lost items.

***SMOKING IS STRICTLY FORBIDDEN ON THE DEPARTMENTAL PREMISES,  
INCLUDING THE GARDEN AND THE YARD***



# WORK / ENVIRONMENTAL PROTOCOL AND INFECTION CONTROL

## GENERAL RULES

1. Frequently wash your hands using soap and warm water.
2. Sanitise your hand frequently.
3. Do not touch your face or eye.
4. It is **STRICTLY FORBIDDEN** to consume food, drinks or chewing gum **anywhere** on the premises of the department (including lecture halls, dissection rooms, histology laboratories or on the hallways, staircases).
5. Use paper tissues in case you cough or sneeze and dispose of them immediately in the designated bins.

## SPECIFIC RULES CONCERNING THE DISSECTION ROOMS

1. Lab coats (buttoned up) must be worn in the dissecting room at all time.
2. Use hand sanitizers upon entering. Rubber gloves are provided for dissection.
3. Loose/long hair must be tied back before dissection.
4. Food and drinks are **strictly forbidden** on the premises of the department.
5. Only books, sketch, or notebooks, atlases and dissection tools (as well as ID, cards, phones etc) to be used during the dissection classes are allowed in the labs. All other items should be left in the lockers.
6. Have your own padlock on you to lock your stuff and/or clothes in the lockers
7. No valuable items should be left in the lockers, the department does not bear responsibility for lost items/valuables.
8. Scalpels, blades and tweezers will have to be carried in a tightly closed and hard box. Please make sure that nobody is harmed when working with the sharp and pointed tools.
9. Accidents must be reported to the teacher first and wounds will be dressed with the help of the dissection room assistants.
10. Lab coats and rubber gloves are to be worn in the dissection room units only! Do not step out (not even for using the washroom) from the dissection unit while still wearing a lab coat.
11. It is strictly forbidden to take bones or other anatomical specimens or samples etc. from the dissecting room.
12. Dry and wet samples must be treated separately. Please wash the gloves during dissection before you start handling bones or dry /plastinated specimen.
13. There is a bell ringing 5 minutes before the end of the practical classes. Then all cadaver specimens will have to be properly wrapped and put away in their bags or boxes.
14. Dissection leftovers should be discarded in the special containers and the trays should be left **clean and dry.**
15. Dissection tools should be properly washed.
16. Disposable scalpels/blades could be disposed of **in special yellow/red containers designed for sharps and hazardous material.** Gloves must be discarded in labelled bins only, but NEVER in communal/paper waste!
17. The dissection unit may only be left following a thorough handwash using a disinfectant soap.
18. Please make sure that you leave the dissecting room quickly to provide time for the personnel to clean the surfaces between classes.

## FIRE SAFETY PROTOCOL

Please make sure to adhere to the rules of fire safety regulation with full compliance, paying special attention to the following:

1. The use of naked light or smoking is **STRICTLY PROHIBITED** on the premises of the Department, including the building and the yard.
2. In case of fire, a loud fire alarm signal is to ring throughout the building. In case of a fire drill, the building must be left organized, with the guidance of the teacher/instructor of the group, using the exits as quick as possible. Escape routes are illustrated on every floor.
3. The use of elevators is **STRICTLY PROHIBITED** during a fire drill.
4. Every lecture room has 3 accessible entrances/exits. Students usually enter and leave through the lower single entrance under normal circumstances. When necessary, i.e. in case of fire, the upper 2 doors could also be opened using the keys kept in the fire cassettes next to the doors.
5. All fire cases or signs/ suspicion of a possible fire should be reported to the teacher of the group.
6. No electrical devices should be plugged in a connector different from the designated ones. Only electrical devices in an intact and perfect condition should be used.





## LIST OF TEXTBOOKS

Sobotta's Atlas of Human Anatomy (Package), 15th English ed. Musculoskeletal system, internal organs, head, neck, neuroanatomy, By Waschke & Paulsen, ISBN-13: 9780702052507 2013

Gray's Anatomy for students with STUDENT CONSULT Online Access, 3rd Edition by R. Drake, A. W. Vogl, A. Mitchel, Elsevier; 2014; ISBN 9780702051319

McMinn and Abrahams' Clinical Atlas of Human Anatomy with STUDENT CONSULT Online Access , 7th Edition By Abrahams, Spratt, Loukas & van Schoor ISBN-13: 9780723436973 , 2013

Human Anatomy, Color Atlas and Textbook, 6th Edition by J Gosling, P Harris, J Humpherson, I Whitmore and P Willan; ISBN 9780723438274 Elsevier, 2016.

Fitzgerald's Clinical Neuroanatomy and Neuroscience, 7th Edition, Elsevier, 2015.

Oral Anatomy, Histology and Embryology, 4<sup>th</sup> Edition, by B. Berkovitz Paperback with STUDENT CONSULT Online Access and e-book ISBN: 9780723434115 Copyright: 2009

McMinn's Color Atlas of Head and Neck Anatomy, by Logan, Reynolds, Rice & Hutchings, 5th Edition, Elsevier 2016

Functional Anatomy, Histology and Embryology for medical and dental students by M. Réthelyi and J. Szentágothai, Medicina, 2018.

The Developing Human – Clinically Oriented Embryology, 10th ed. by KL Moore, TVN Persaud and M Torchia, Saunders, 2015; ISBN 9780323313384

*Illustrated Dental Embryology, Histology, and Anatomy, 3<sup>rd</sup> Edition by Mary Bath-Balogh ISBN: 9781437717303, 2011.*

*Netter's Head and Neck Anatomy for Dentistry, 3rd Edition, Elsevier, 2016.*

*Anatomy, A Photographic Atlas, 8th Edition by Rohen, Yokochi; Wolters Kluwer, 2016, ISBN: 978-1-4963-0870-2*

*Bräuer: Sobotta Flashcards (Muscles; Bones, Ligaments, and Joints) URBFI, 2013.*

*KL Moore–AF Dalley: Clinically Oriented Anatomy. 4th ed. Lippincott William and Wilkins, 1999.*

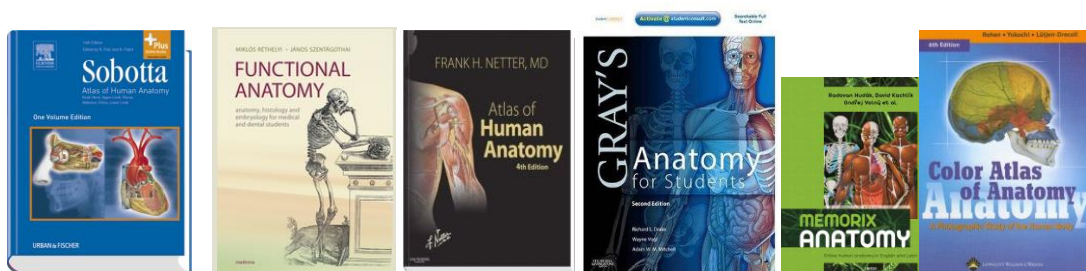
*RMH McMinn: Last's Anatomy, Regional and Applied. Churchill Livingstone, Edinburgh 1990. ISBN 0-443-03484-4*

*Neuroanatomy An Illustrated Colour Text, 4th Edition by Crossman & Neary Publication Date: 13/04/2010 ISBN-13: 9780702030864*

*Langmann's Medical Embryology, 13th Edition by TW Sadler, Wolters Kluwer, ISBN 9781469897806, 2014*

### Further study aids:

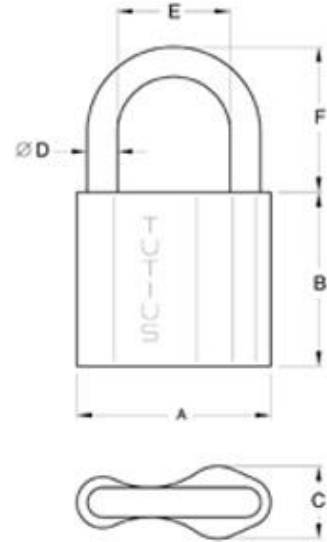
To be downloaded from the homepage of the Department of Anatomy, Histology and Embryology (<http://semmelweis.hu/anatomia>) or from Knowledgebase on the Library homepage: ([https://lib.semmelweis.hu/knowledge\\_base](https://lib.semmelweis.hu/knowledge_base)).



**During dissection classes keep your belongings in the lockers and lock them with your padlock!**

**PADLOCK SIZE: 6 mm**

Please, remember to keep your valuables always on you, or lock them in the lockers since the department takes no responsibility for lost items.



## DISSECTION ROOM TOOLS

**SCALPEL**



**OR**



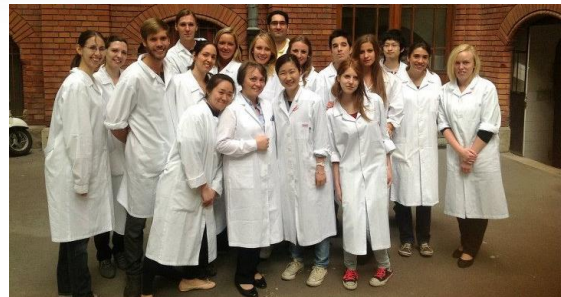
**A PAIR OF ANATOMICAL FORCEPS**

**RUBBER GLOVES**



**PROTECTIVE CLOTHING  
(LABCOAT)**

**GOGGLES**



# GENERAL OUTLINE OF THE SEMIFINAL EXAMINATIONS in MACROSCOPIC ANATOMY AND EMBRYOLOGY I (*new curriculum*)

*Semifinal examinations are held **as seen in neptun**  
in the Histology Laboratories then continue with the dissection part*

## REGISTRATION ISSUES

**Registration** has to be done in neptun according to the Study and Examination Policy. Registration closes 24/23 hours before the actual examination time announced in neptun.

**Absences** – no-show at the semifinal examination reduces the remaining examination possibilities and Students will have to pay a missed examination fee via neptun.

In case of health problems, students will have to present a **doctor's note within 3 working days** to be evaluated by the Head of Department. If accepted, the number of the student's examination possibilities will not be reduced.

**On the day of the examination, leave your bags in a locker and gather in front of the Histology lab 10 minutes before starting time.** Please make sure you have the following items on you:

**ID card/student card** (you may not start the examination **without it**)  
**SeKA login details** (memorize or write them down on a small piece of paper) \*  
**a pair of anatomical forceps for the Macroscopy part**  
**in case of a retake exam – proof of payment** (except for the 1st retake)

\*Students who cannot login /forgot their password will be considered as „absent“ (see above) and have to sit for the examination on a different day

**Phones and smart watches have to be stored elsewhere during examinations.** Neither pens+papers may be with you during the written part. You cannot take notes or talk to your peers during the examination. Students found to use such items or breaking the aforementioned rules will be immediately suspended, the case recorded and the examination is terminated with a fail (1).

*For safety reasons you may keep your valuables (money, cards, IDs, etc) on you, however „large“ items, such as phones (switched off), tablets (switched off) and pencil cases will be collected upon entering the examination room.*

**No chewing gum, no food, no drinks are allowed while on the premises**

## PARTS OF THE SEMIFINAL EXAMINATION

### **WRITTEN PART – Histology laboratory (Students may not leave the room during the test)**

The test is composed of 40 simple / multiple choice questions including Embryology (20%)

Writing time: 40 minutes

**Passing rate: 50%** (below 50% =fail, 50% =satisfactory, 65% =average, 75% =good, 85% =excellent)

Following the completion of the test Students may view their results, however, neither questions may be asked nor notes may be taken during this time. Students may not leave the room before the inspection time expires.

- Students not reaching 50% percent in the written part cannot continue (i.e. fail) the examination and have to leave.

- Students failing the examination in a subsequent practical part may be exempted from the written test during the retake examination **ONLY** if they gained a good (4), or excellent (5), result from the written test. These students should present themselves at 13.00 on the day of the retake examination at the Lenhossék lecture room.
- Students may request in writing to sit for an oral theory exam to replace the written part in case of a 2nd or 3rd retake examination. A request will have to be sent to the Course Director **WITHIN 48 hours** of the selected examination day.

## MACROSCOPY PART

This part is held in the Lenhossék Lecture Hall. Rubber gloves and labcoats are provided by the department. Here the Students are examined on prosections in the following topics:

- Upper and lower limbs
- Trunk (thorax and abdomen including the inguinal canal)
- Head and neck (including the skull)

Further questions, other than the identification of the presented specimens, may arise, e.g. discussing theoretical or embryological relevances. Students may be asked to produce schematic drawings of certain regions as part of the examination.

*EXEMPTIONS – see above*

## MARKING SYSTEM

**The examination finishes in the Lecture Hall, where Students are given a mark calculated from the all results.**

- If one part of an examination results in fail (1), the entire examination is terminated with a fail (1).
- In case the result of one of the parts is **1/2**, the overall result of the examination CANNOT be better than a pass (2). This mark can only be earned once during the examination.
- **Students failing the examination, may repeat the exam once „free”, every further attempt will be charged for.** The total number of examination seats is set (200% of the number of students in a given course), therefore the number of examination seats will not be increased\*.
- **Retake of a successful examination** - students unhappy with the result of the examination may apply in writing with the Course Director, to retry the examination. They will be registered by the Course Director in neptun. **Please note, that such a retake examination does not necessarily result in a better mark.**
- **Technical problems** concerning registration or deregistration via the neptun system are beyond the scope of the Department, Students should seek help from the neptun group of the Secretariat.
- The Registrar of the English Secretariat is not entitled to register or deregister students with the only exception of using the 4th chance upon getting the Dean's permission.

If neither of the attempts is successful, Students may postpone the examination to the following semester end as a CV exam. Joint registration is also allowed under certain circumstances – see the prerequisites in moodle. (TBA)



# TOPICS OF THE SEMIFINAL EXAMINATION

## ***Musculoskeletal Anatomy***

General osteology, classification of bones

Continuous connections of bones. Components and classification of joints

General myology

Structure and movements of the vertebral column, the gross anatomy of the muscles acting upon it

Movements and muscles of the head&neck (atlantooccipital and atlantoaxial joints)

Osteofibrous structure of the thoracic cage (bones, joints, ligaments, movements)

Joints of the shoulder girdle, the gross anatomy of the muscles acting upon them

Shoulder joint, the gross anatomy of the muscles acting upon it

Axillary fossa, quadrangular and triangular spaces

Muscles and cross section of the arm

Muscles and cross section of the forearm

Elbow joint, the gross anatomy of the muscles acting upon it

Cubital fossa

Structure and movements of the radiocarpal joint, gross anatomy of the muscles acting upon it

Osteofibrous spaces and muscle compartments of the hand, tendinous sheaths

Muscles, joints and movements of the fingers

Composition of the pelvis (bones, ligaments and membranes)

Hip joint and the gross anatomy of the muscles concerned with the movements

External and internal muscles of the hip, supra- and infrapiriform hiatuses.

Osteofibrous compartments, muscles and of the thigh

Knee joint and the gross anatomy of the muscles concerned with the movements. Popliteal fossa

Subinguinal hiatus, vascular and muscular compartments; adductor canal, femoral canal

Osteofibrous spaces and muscle compartments and cross section of the leg (crus)

Ankle joint together with the gross anatomy of the muscles acting upon it

Subtalar and talocalcaneonavicular joints, the muscles acting upon them

Structure of the foot, arches of the foot

Diaphragm

Muscles and spaces of the abdominal wall, rectus sheath

Inguinal canal, femoral canal

Pelvic floor (muscles); urogenital diaphragm, perineal muscles

Components and connections of the anterior, middle and posterior cranial fossae.

External skull base, connections

Walls and connections of the orbit

Walls and connections of the nasal cavity

Oral cavity, temporal and infratemporal fossae

Walls and connections of the pterygopalatine fossa

## ***Macroscopy of the nervous system***

Blood supply to the brain, meninges, CSF

Hemispheres, lateral ventricles, diencephalon, the 3rd ventricle

Brain stem, cerebellum, the 4th ventricle, spinal cord

Frontal sections of the brain

Dorsal branches of the spinal nerves, intercostal nerves

Cervical plexus

Brachial plexus

Lumbar plexus

Sacral plexus

## ***General Embryology***

Gametes and fertilization

Cleavage of the zygote

Blastocyst formation; the bilaminar embryonic disc

Implantation

Major parts of the early embryo (primary and secondary yolk sacs, amnion, chorion, chorionic cavity, body stalk)

Gastrulation, formation of the intraembryonic mesoderm; the notochord

Neurulation (neural tube and neural crest)

Derivatives of ectoderm, endoderm and mesoderm

Folding of the embryo

Development of the fetal membranes (chorion and amnion)

The umbilical cord

Placenta (structure and formation)

Twin formation

Development of the skull

Development of the vertebral column and limbs

Development of the musculoskeletal system