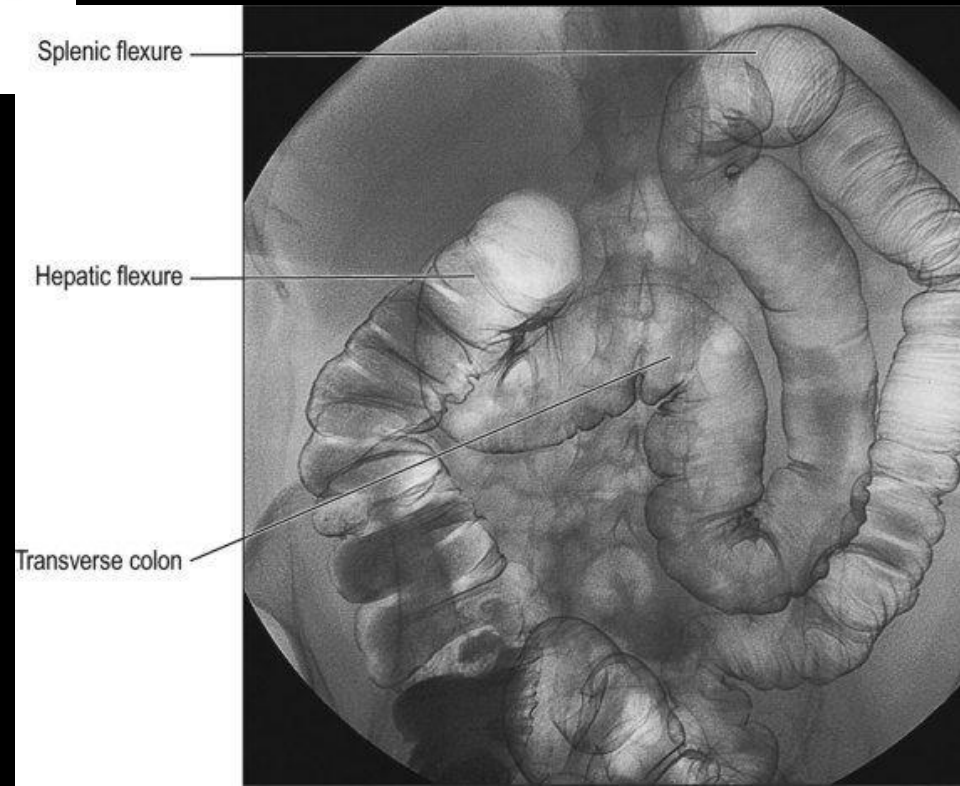
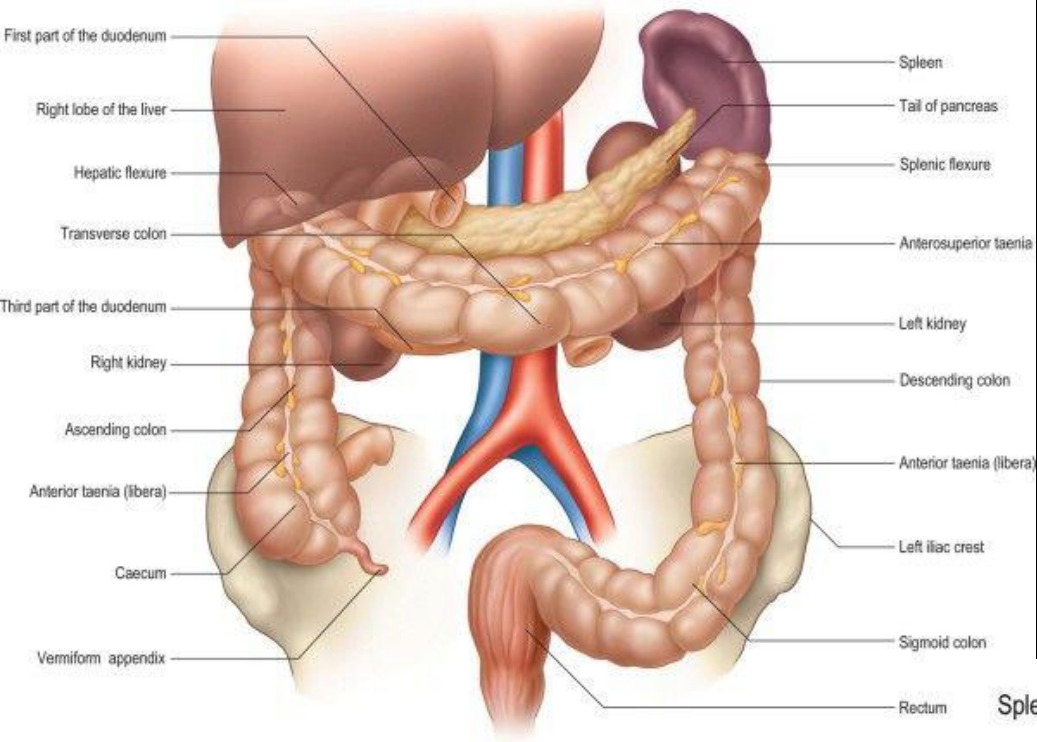
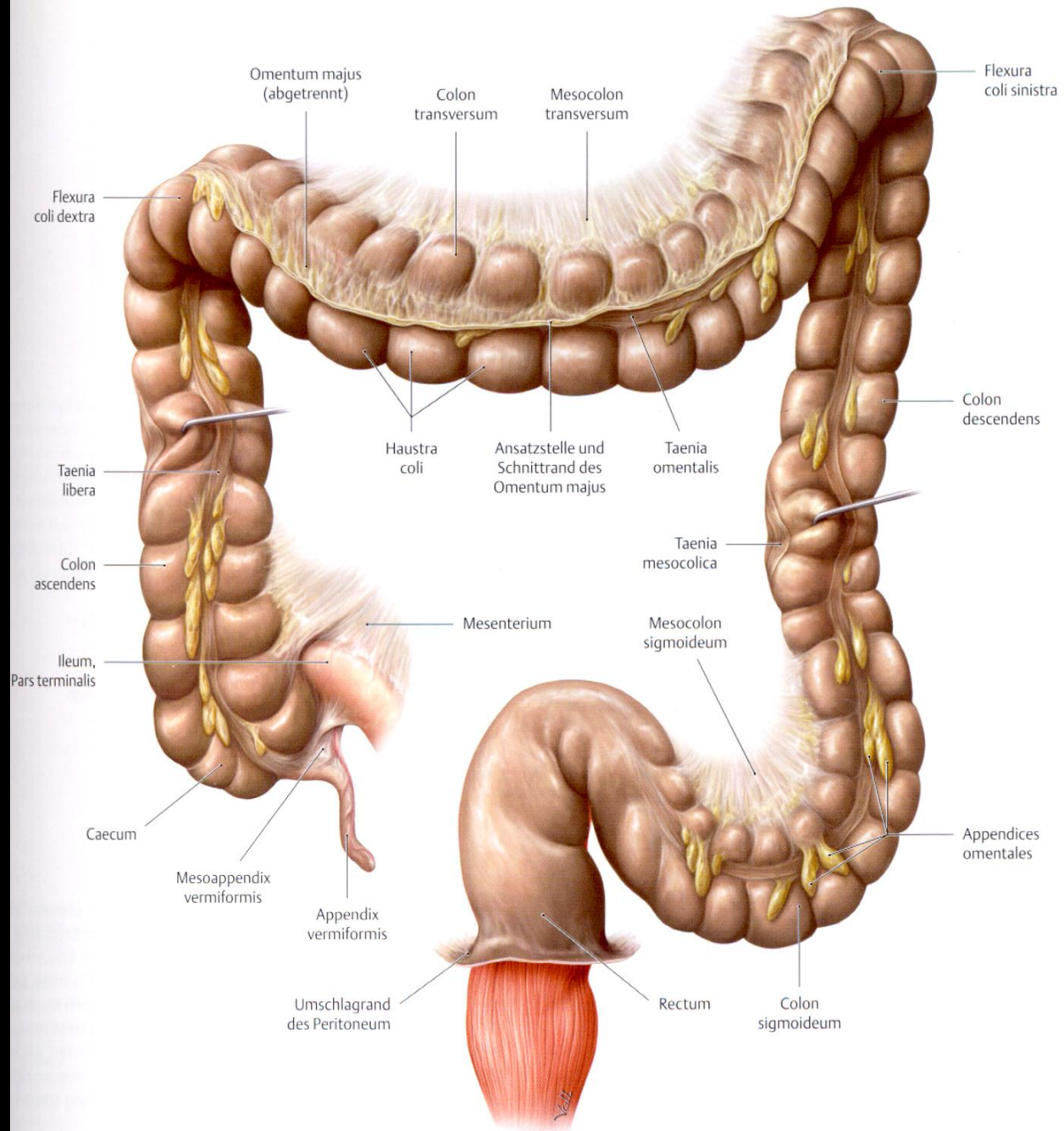


# A VASTAGBELEK ÉS VÉGBÉL

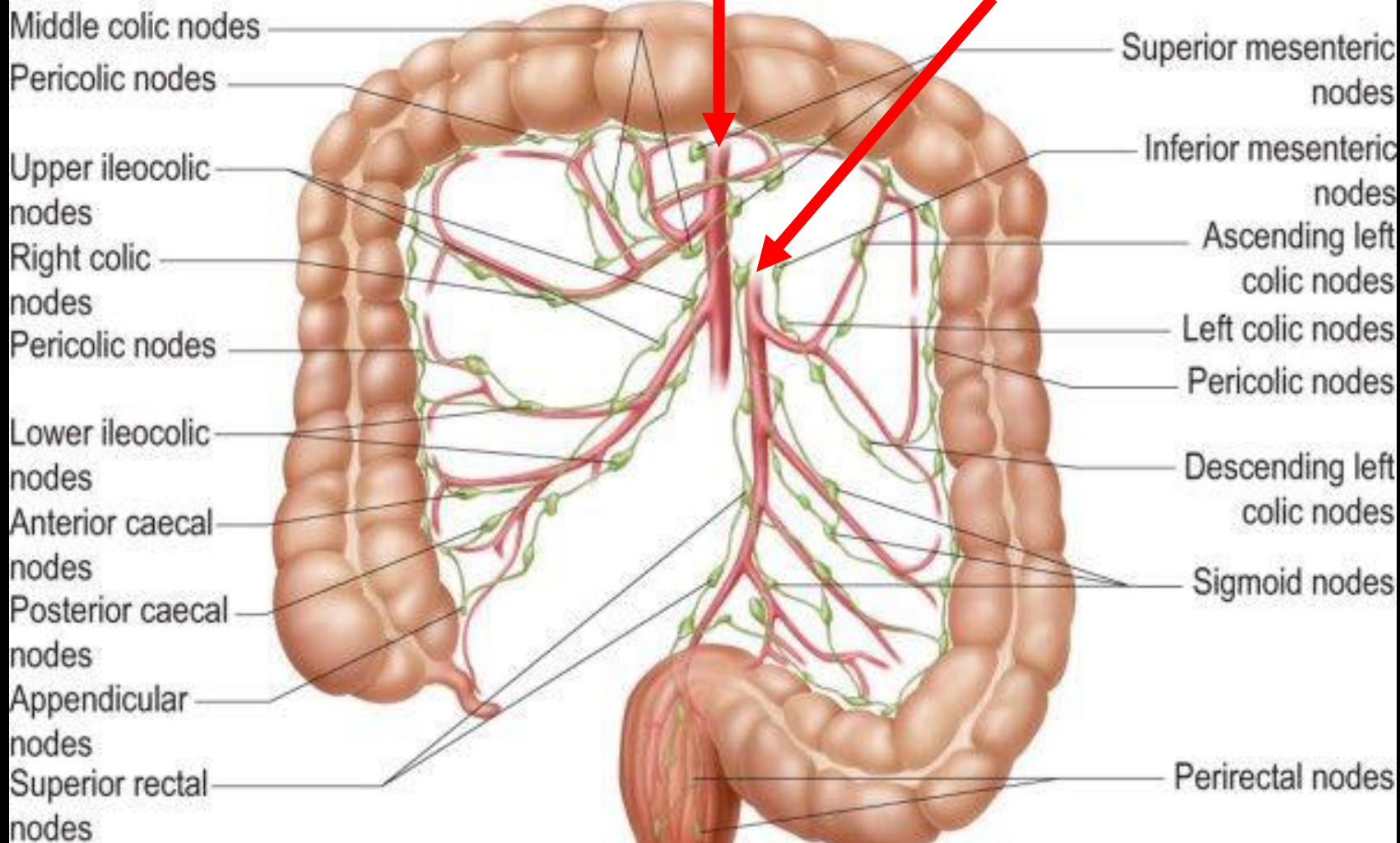
Barna János

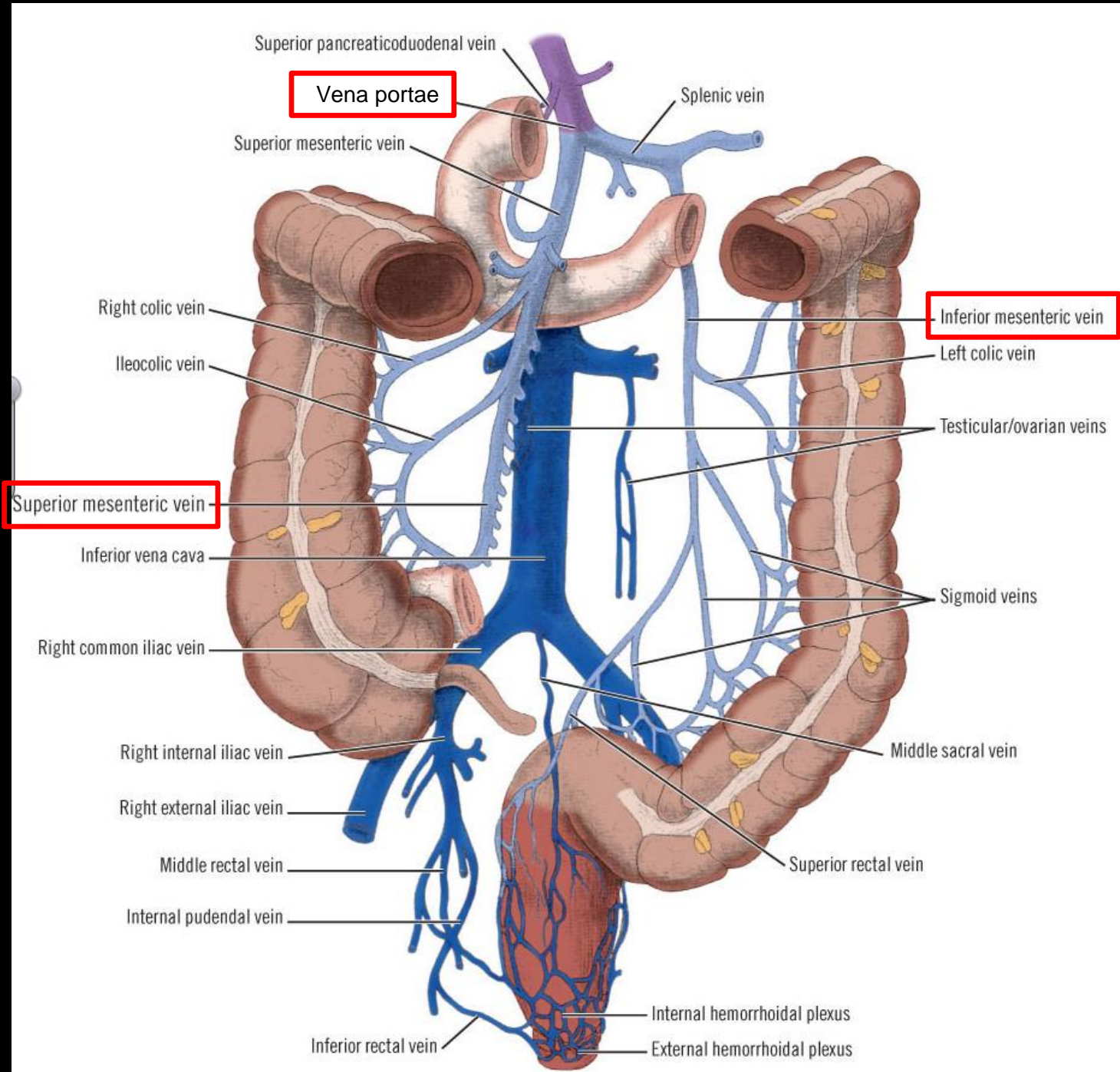


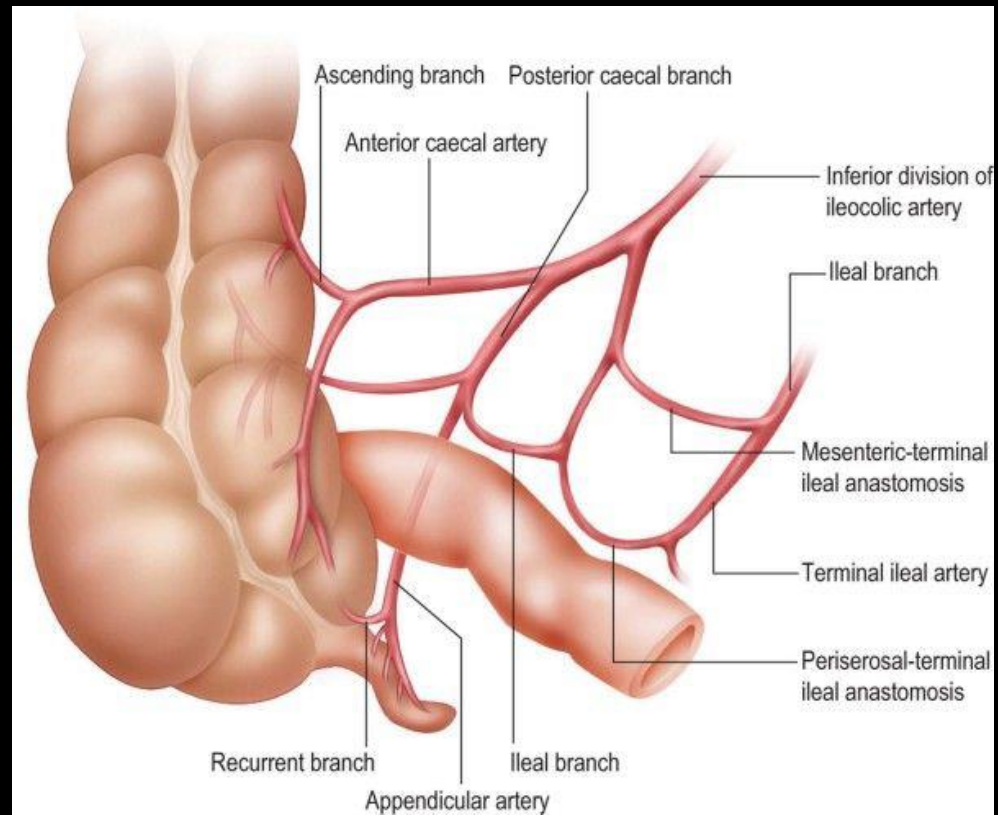
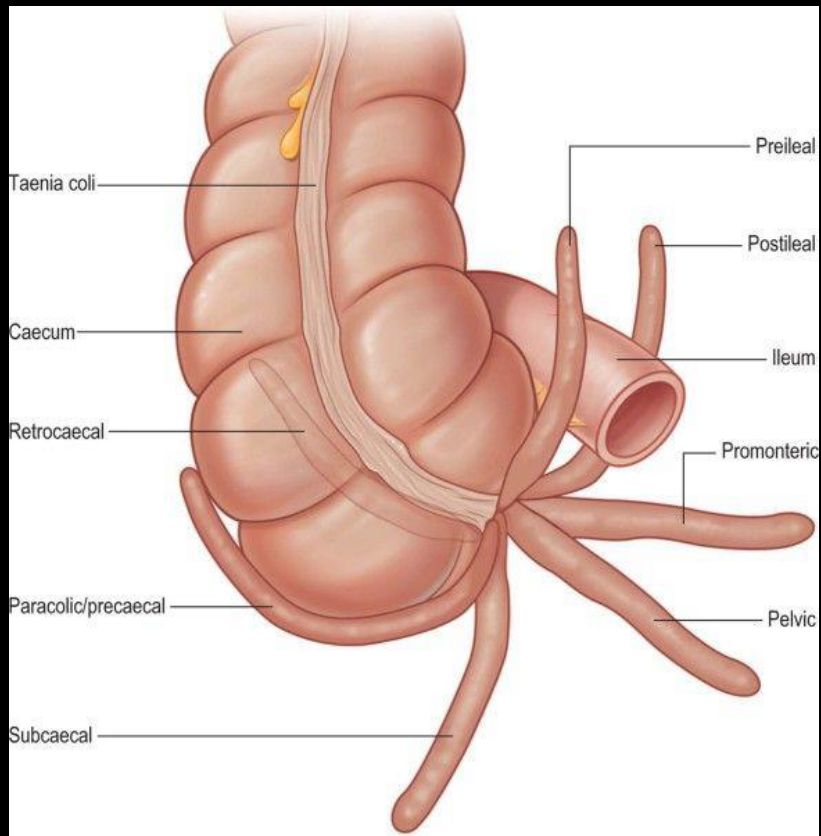


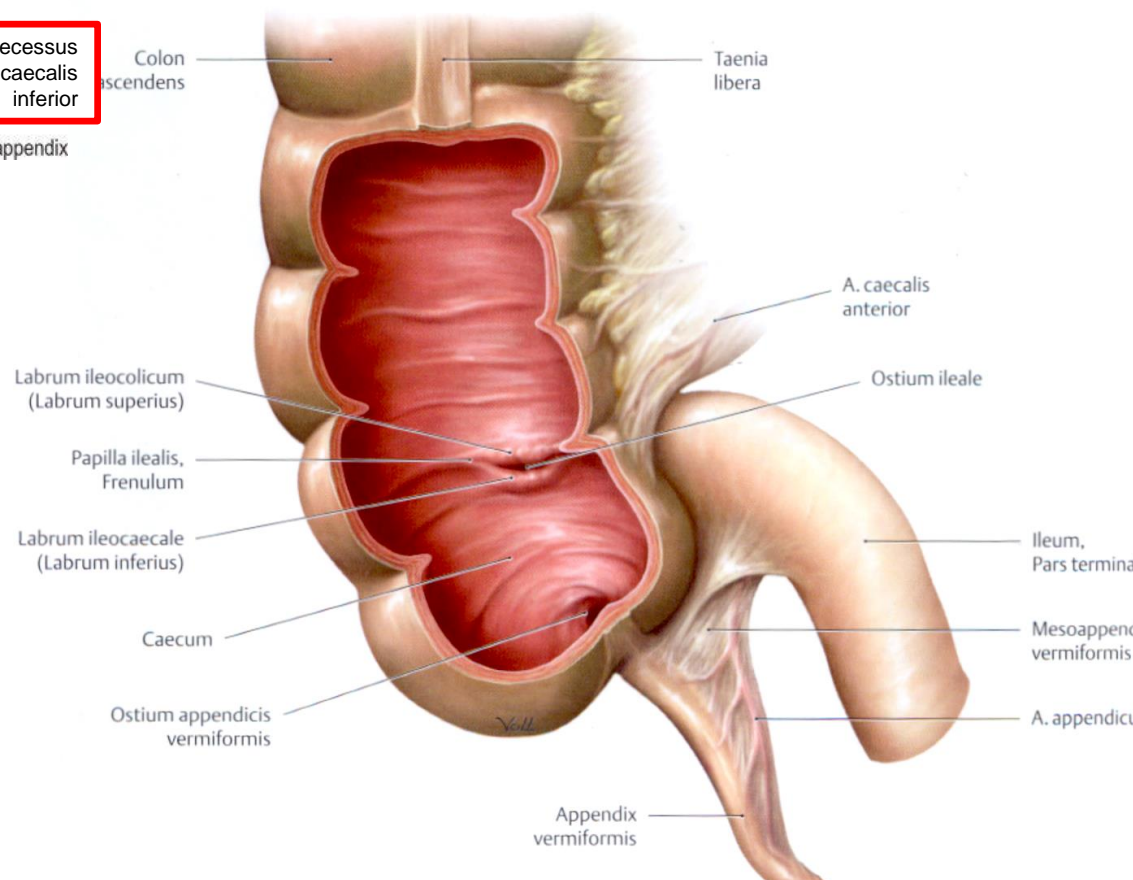
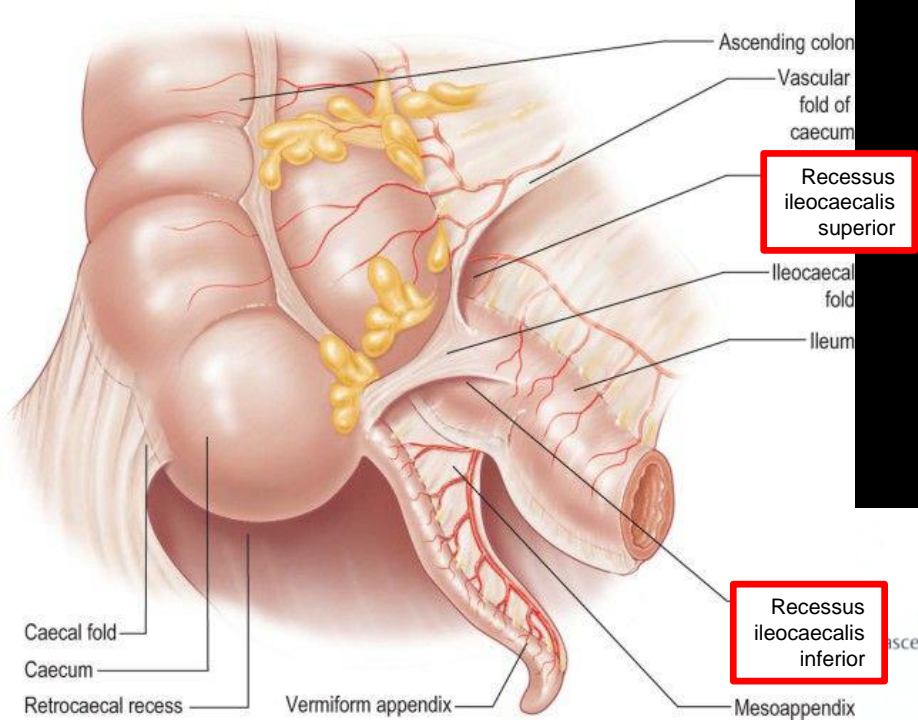
a. mesenterica superior

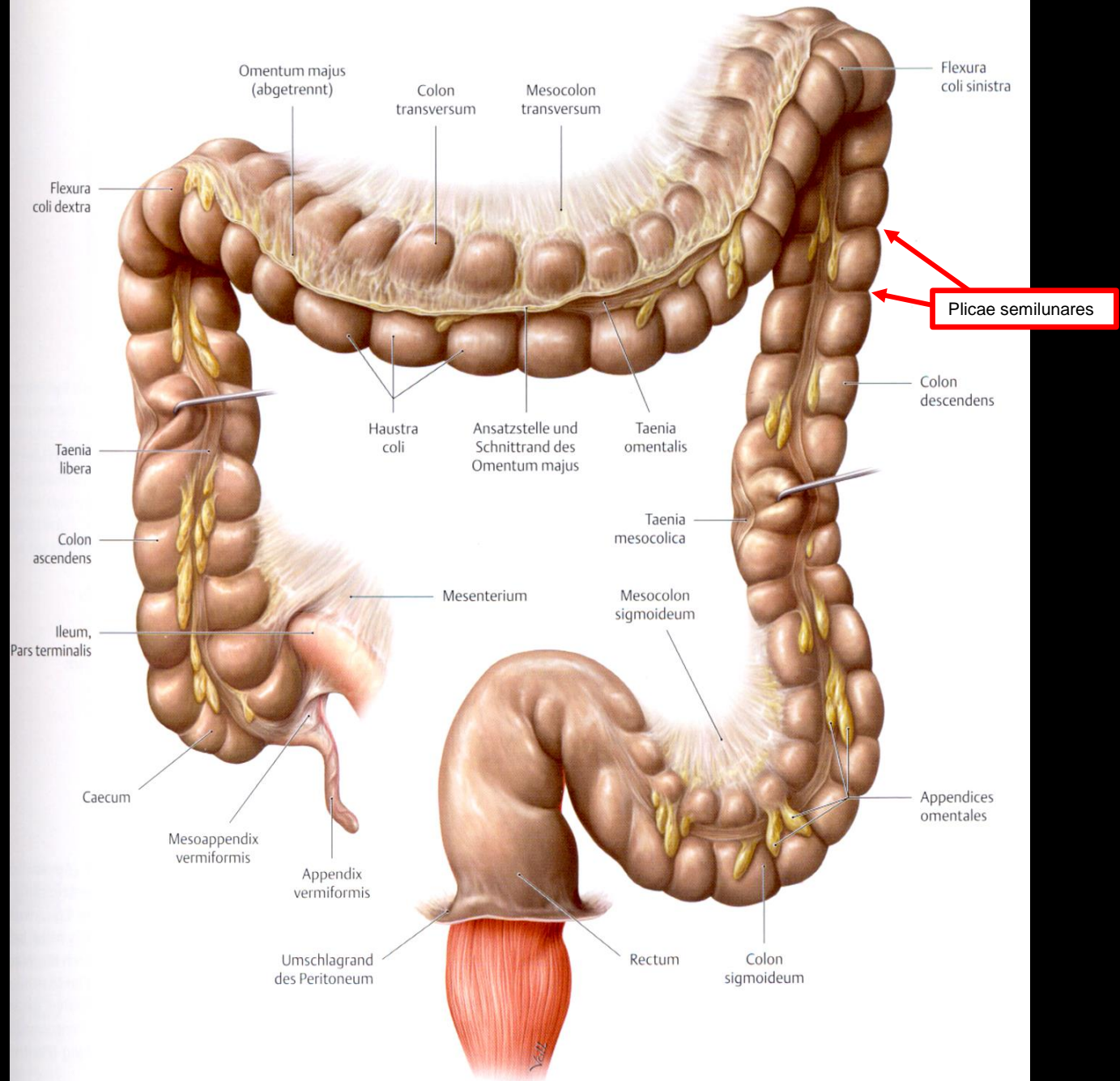
a. mesenterica inferior





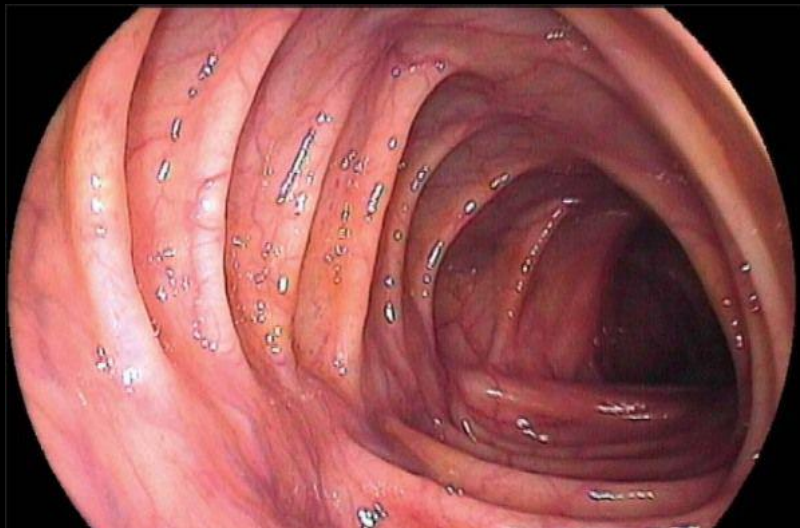
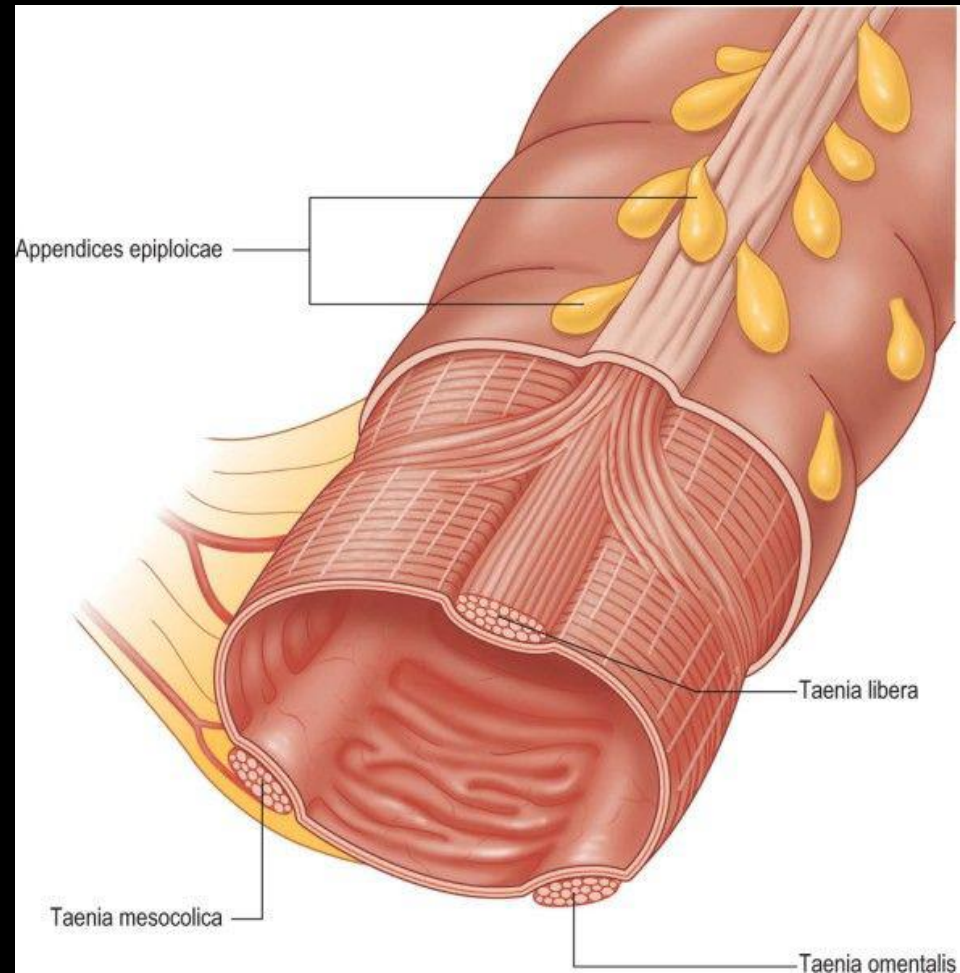
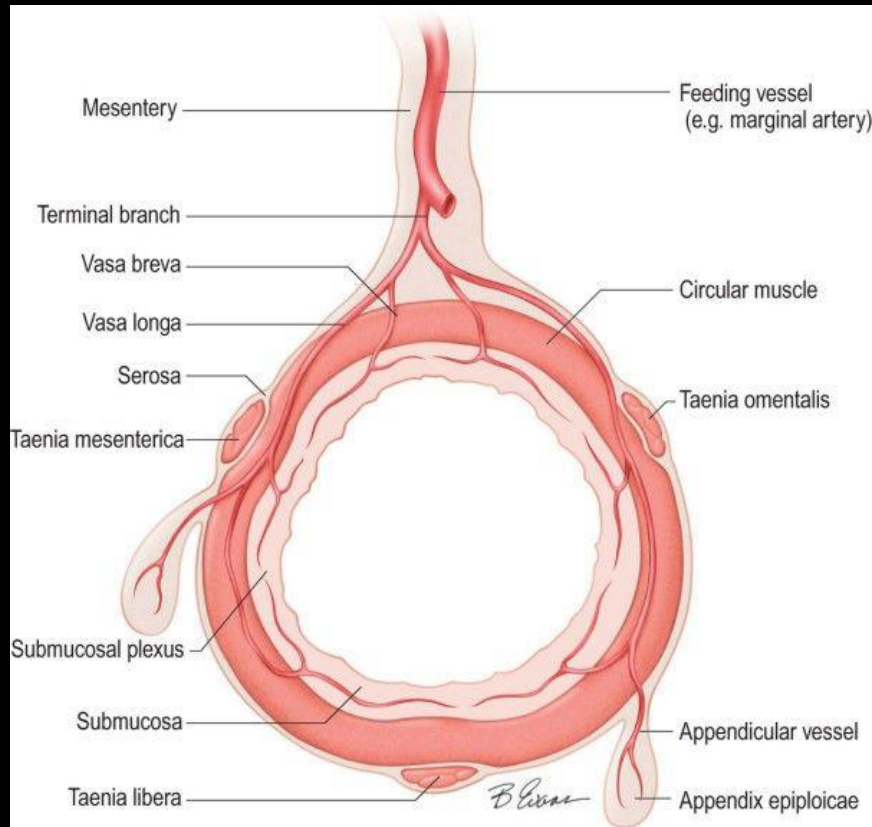


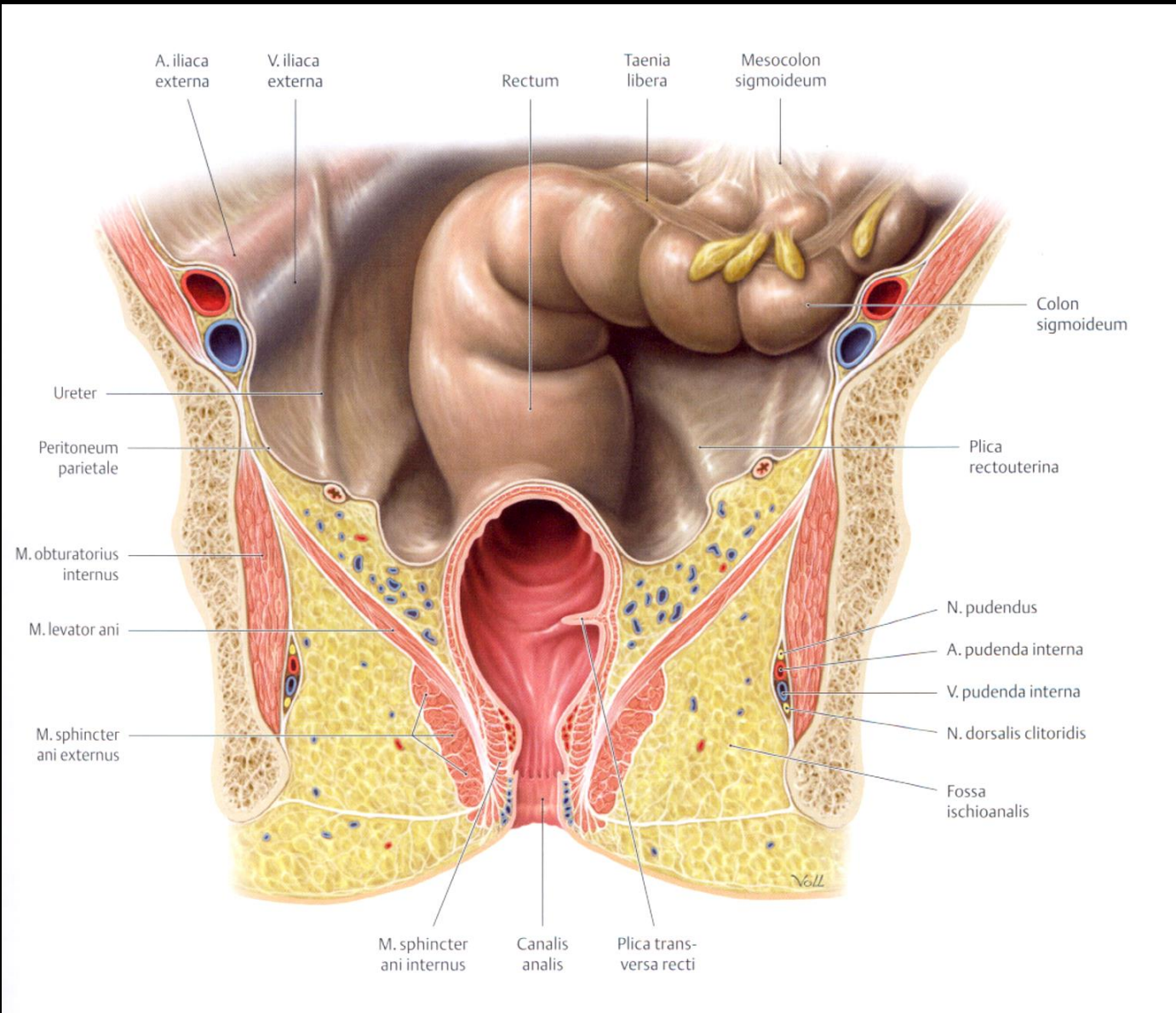






# Colon (remesebél)





Posterior aspect of rectum

A. rectalis superior

Right branch

Main descending branch

A. rectalis media

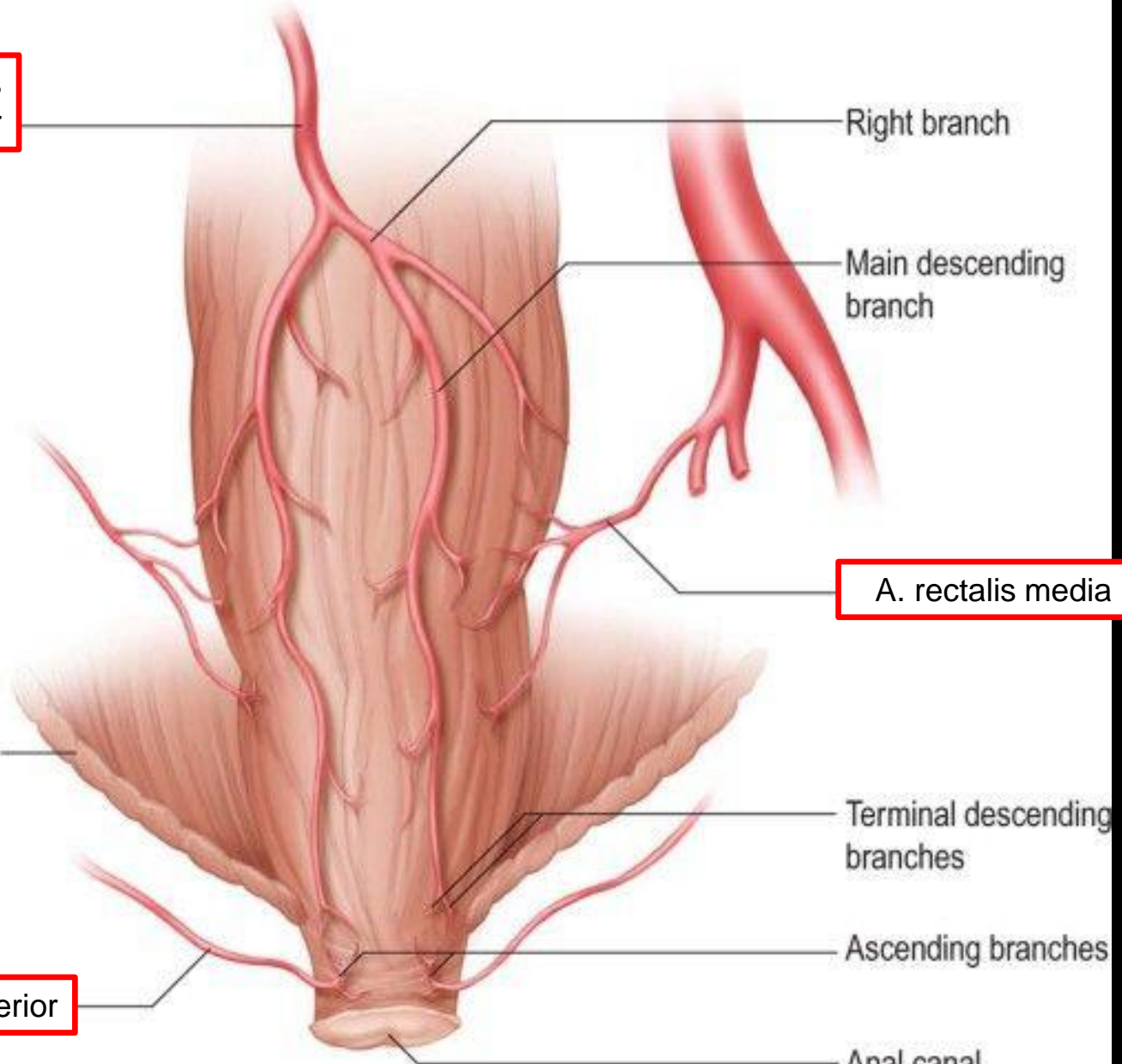
Levator ani

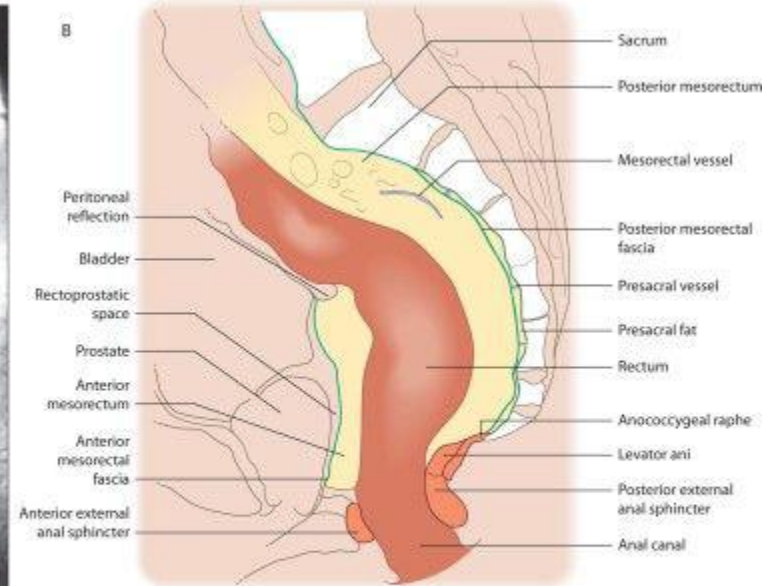
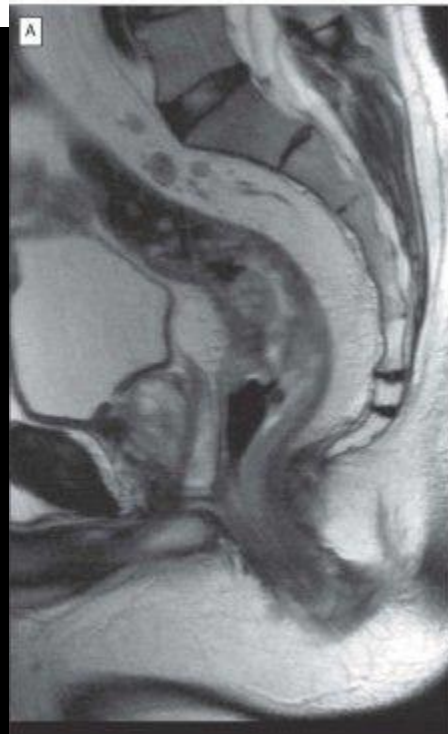
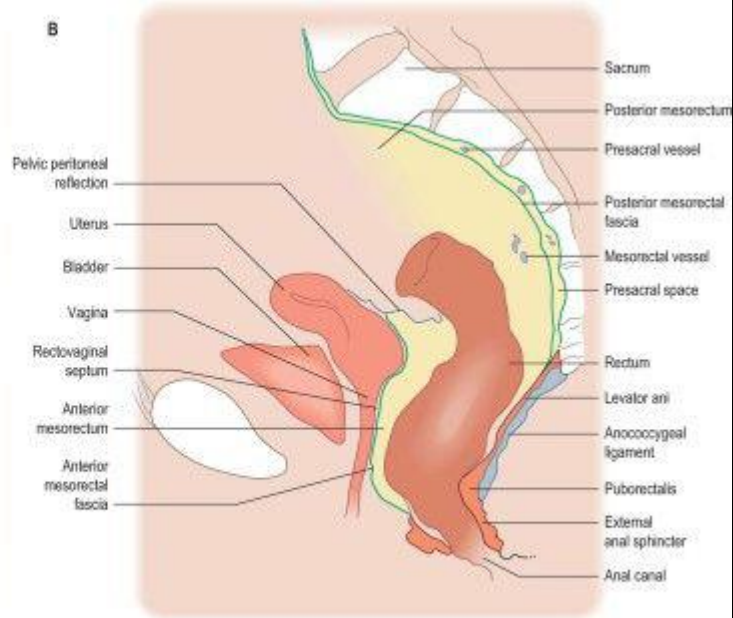
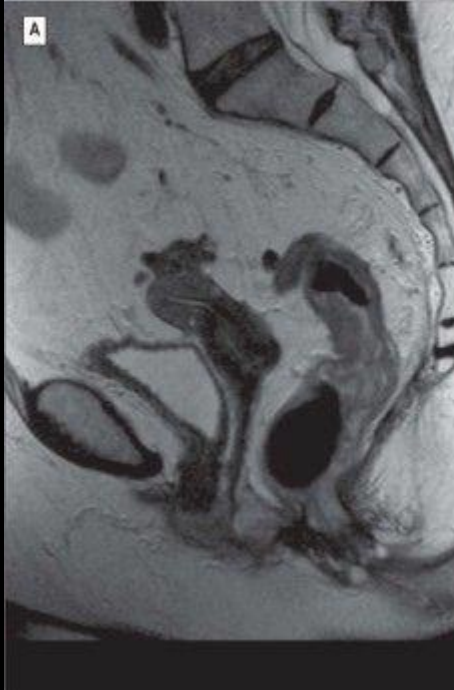
Terminal descending branches

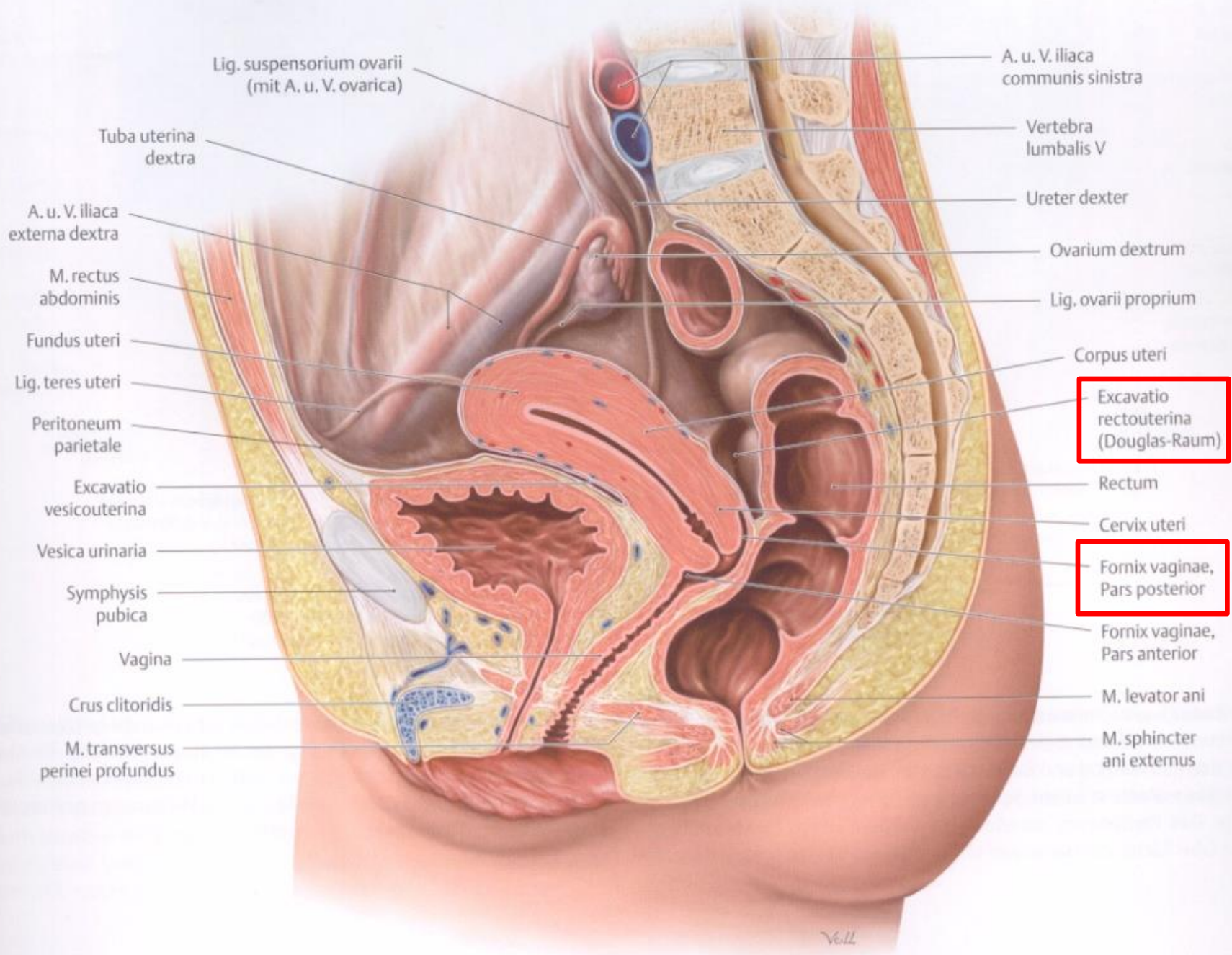
Ascending branches

A. rectalis inferior

Anal canal







Lig. suspensorium ovarii  
(mit A. u. V. ovarica)

Tuba uterina  
dextra

A. u. V. iliaca  
externa dextra

M. rectus  
abdominis

Fundus uteri

Lig. teres uteri

Peritoneum  
parietale

Excavatio  
vesicouterina

Vesica urinaria

Symphysis  
pubica

Vagina

Crus clitoridis

M. transversus  
perinei profundus

A. u. V. iliaca  
communis sinistra

Vertebra  
lumbalis V

Ureter dexter

Ovarium dextrum

Lig. ovarii proprium

Corpus uteri

Excavatio  
rectouterina  
(Douglas-Raum)

Rectum

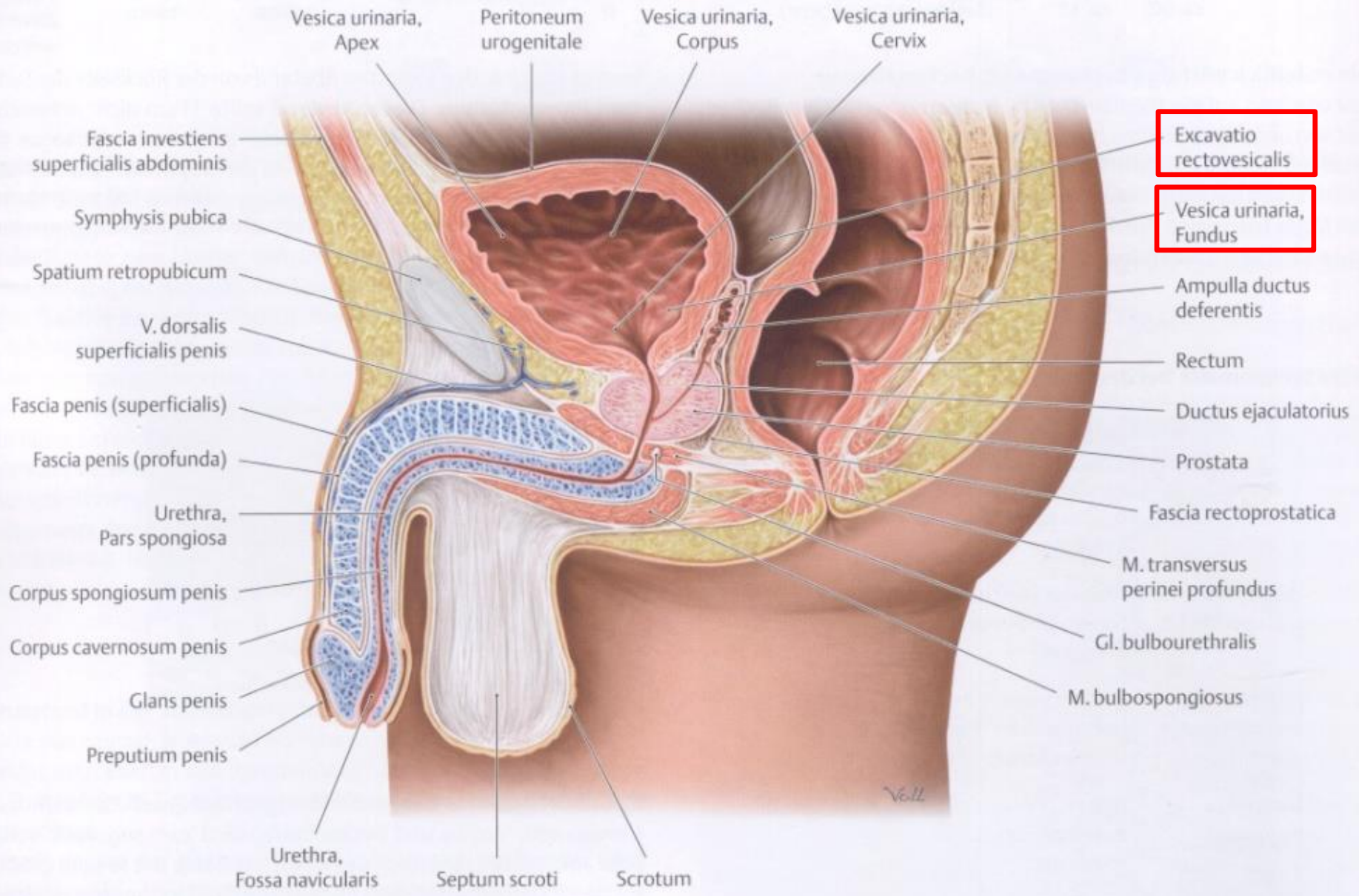
Cervix uteri

Fornix vaginae,  
Pars posterior

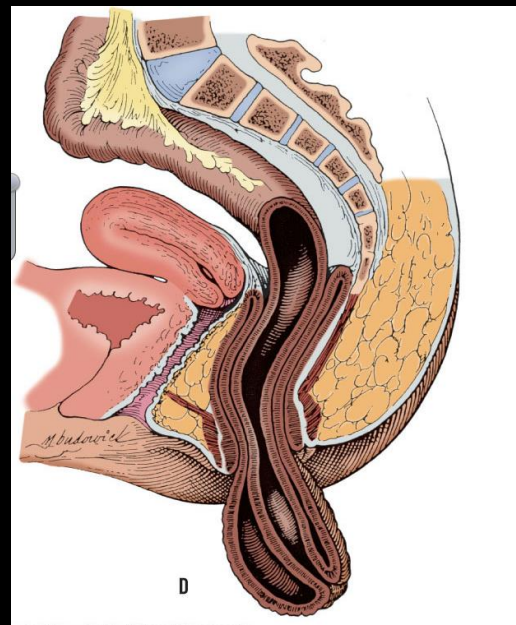
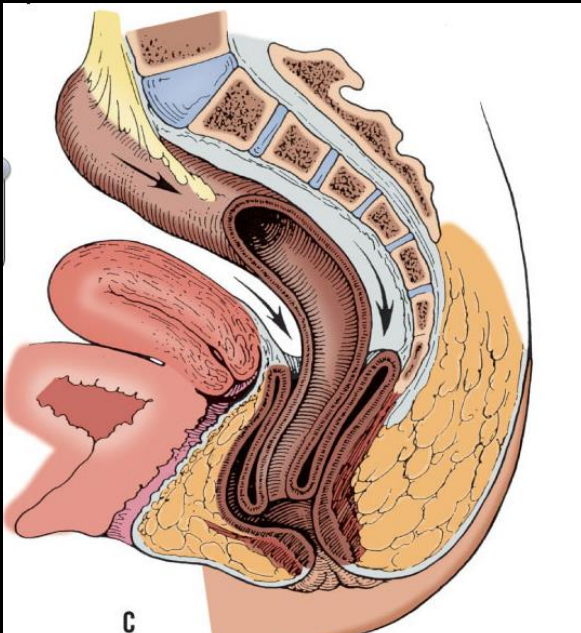
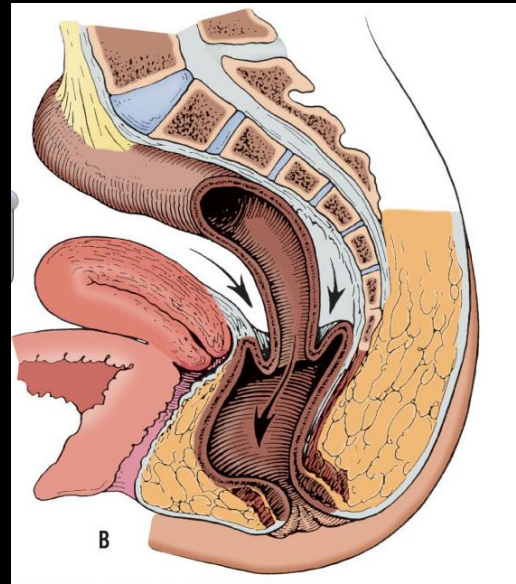
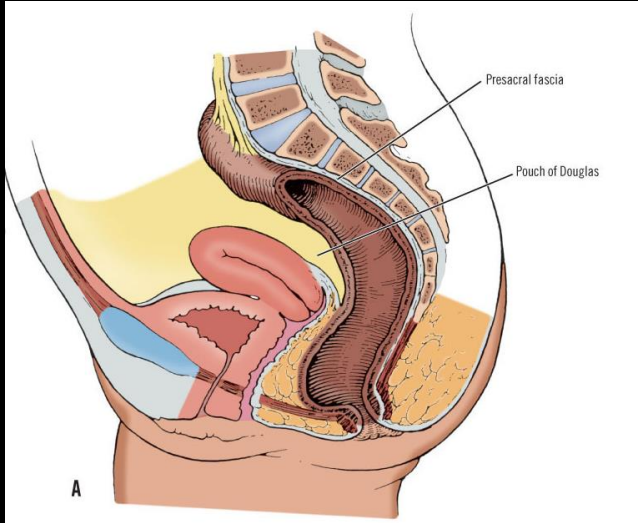
Fornix vaginae,  
Pars anterior

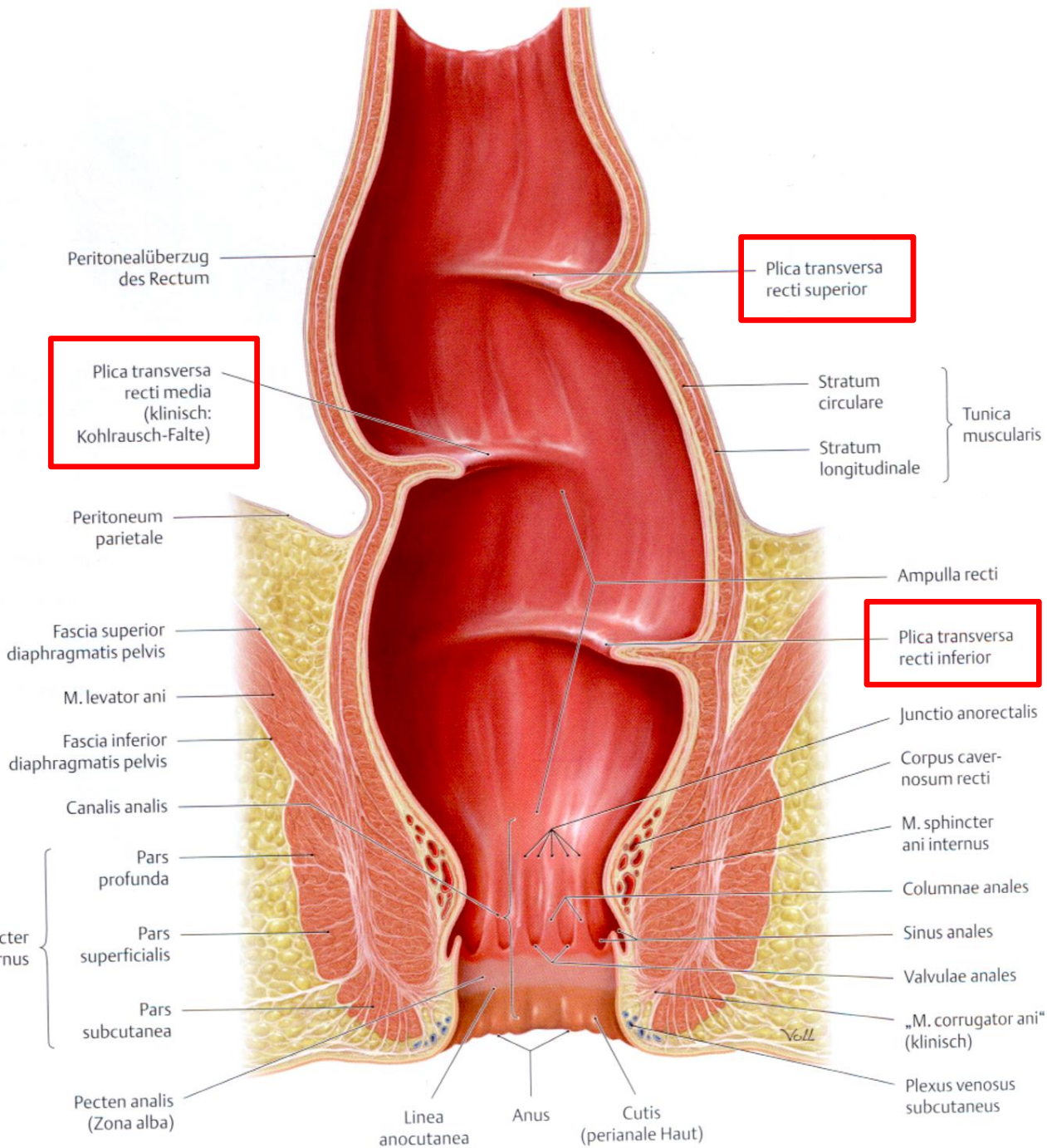
M. levator ani

M. sphincter  
ani externus



# Rectalis prolapsus

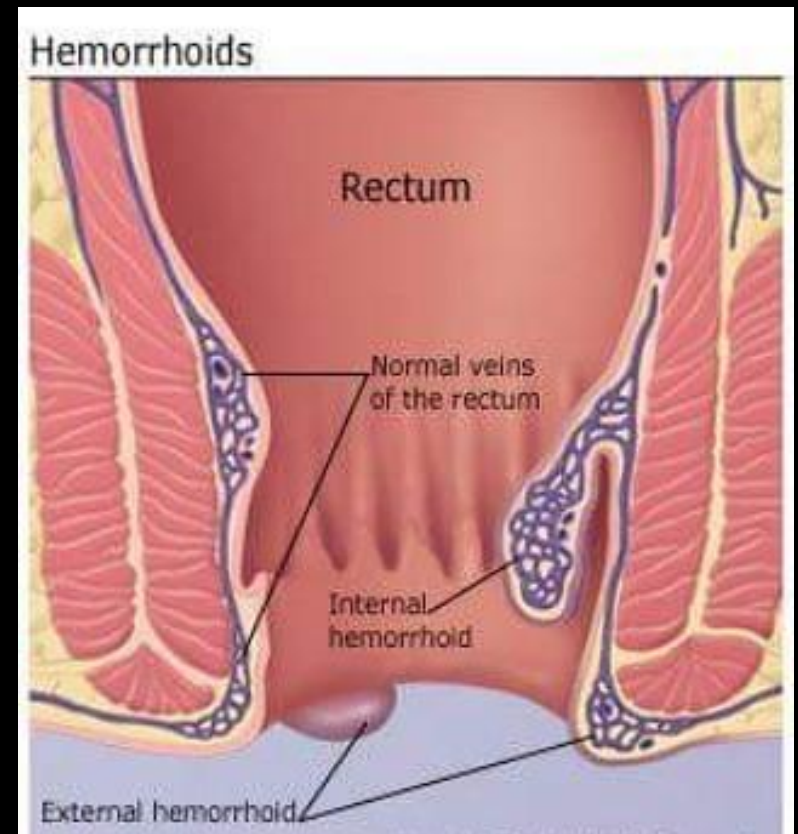
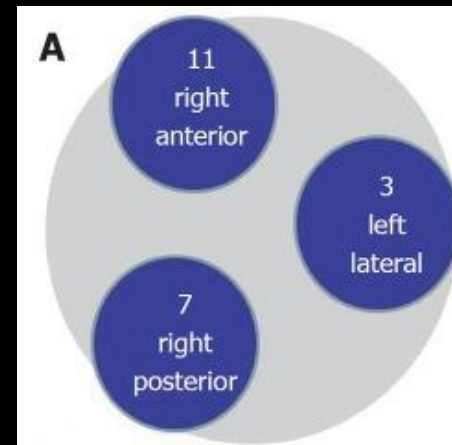
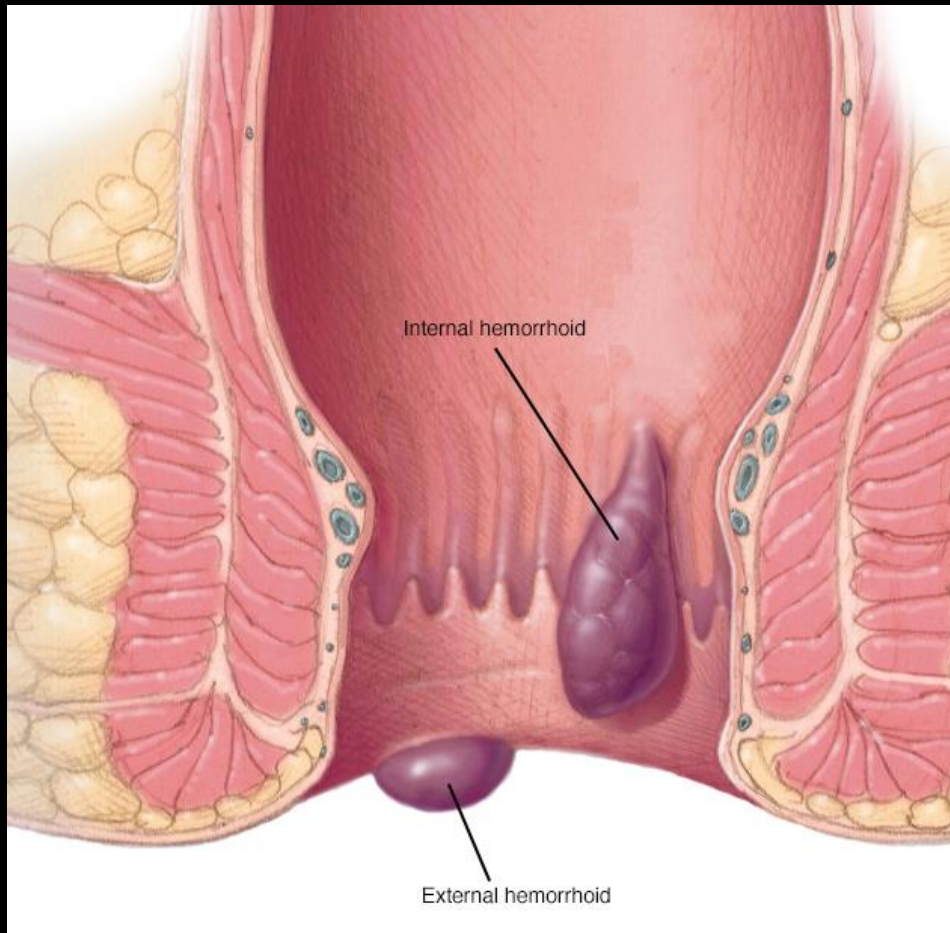




Jobb oldal

Bal oldal





# Sipoly (fistula) és tályog (abszcessus)

