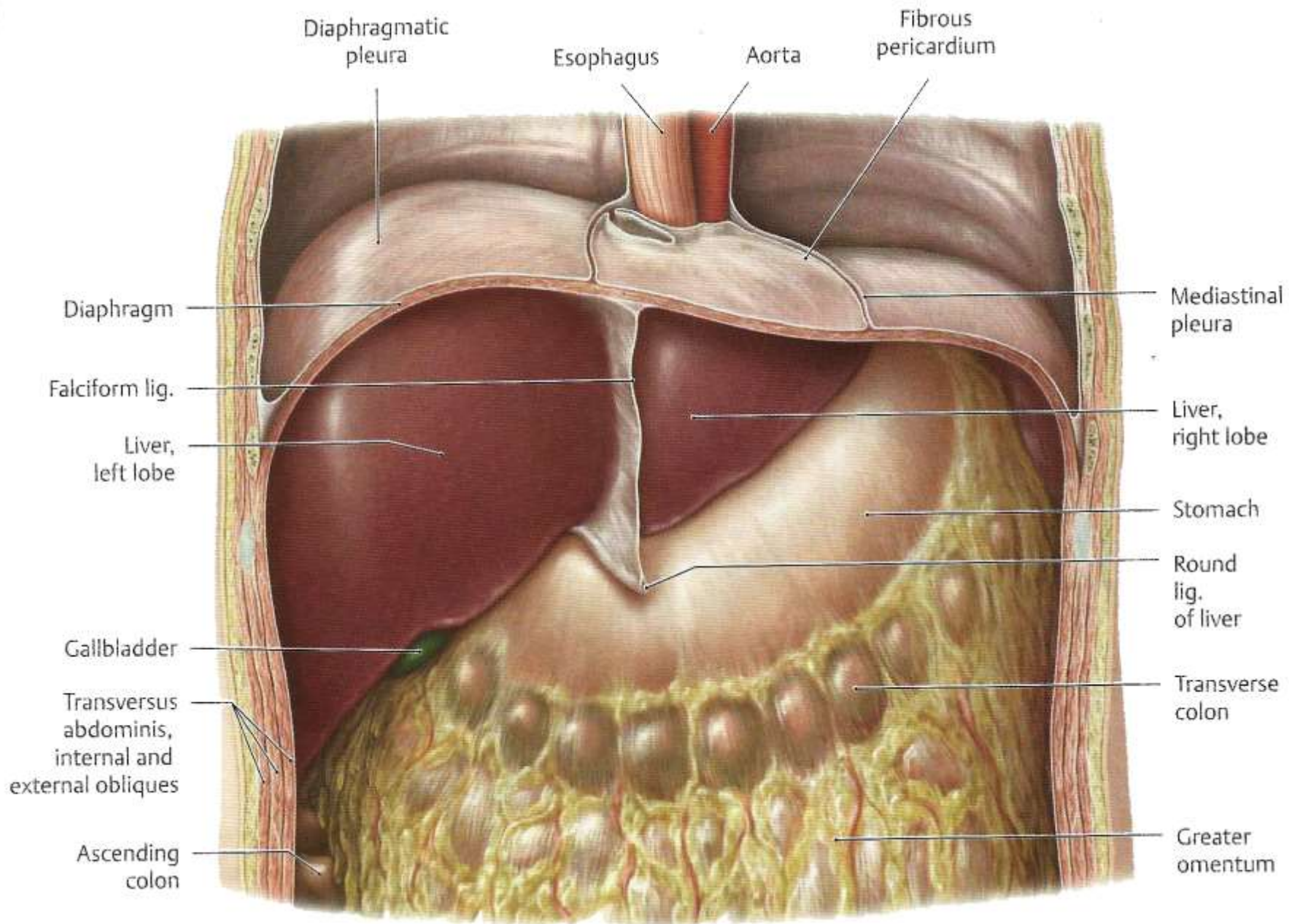


Máj, Eperhólyag, Pancreas, Lép

Tantermi előadás, 2020. február 18.

Dr. WengerTibor

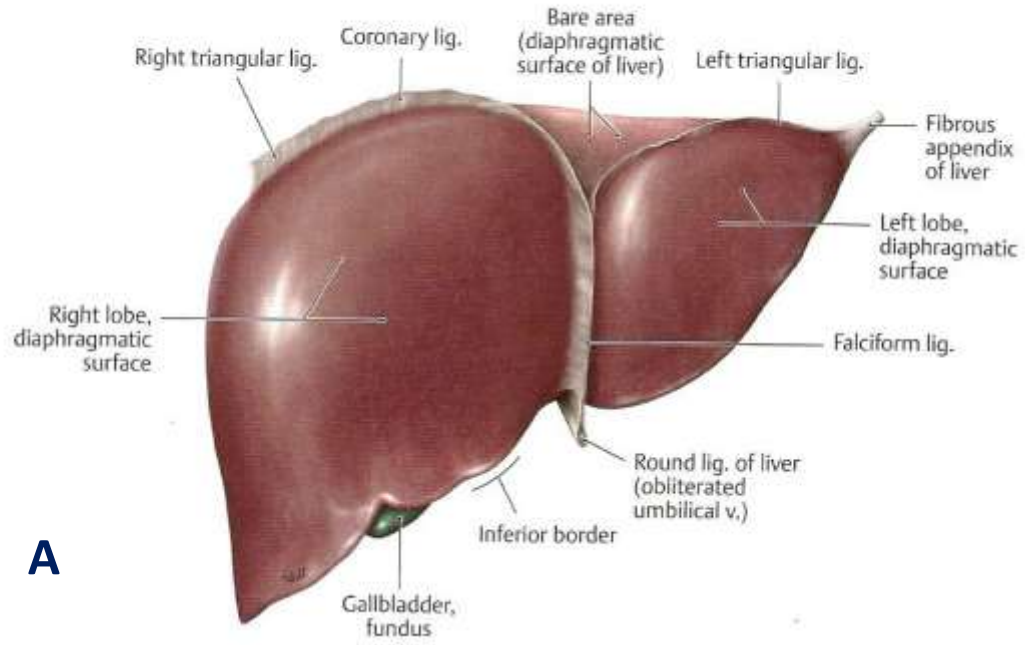
Anatómiai, Szövet- és Fejlődéstani Intézet



Máj, in situ

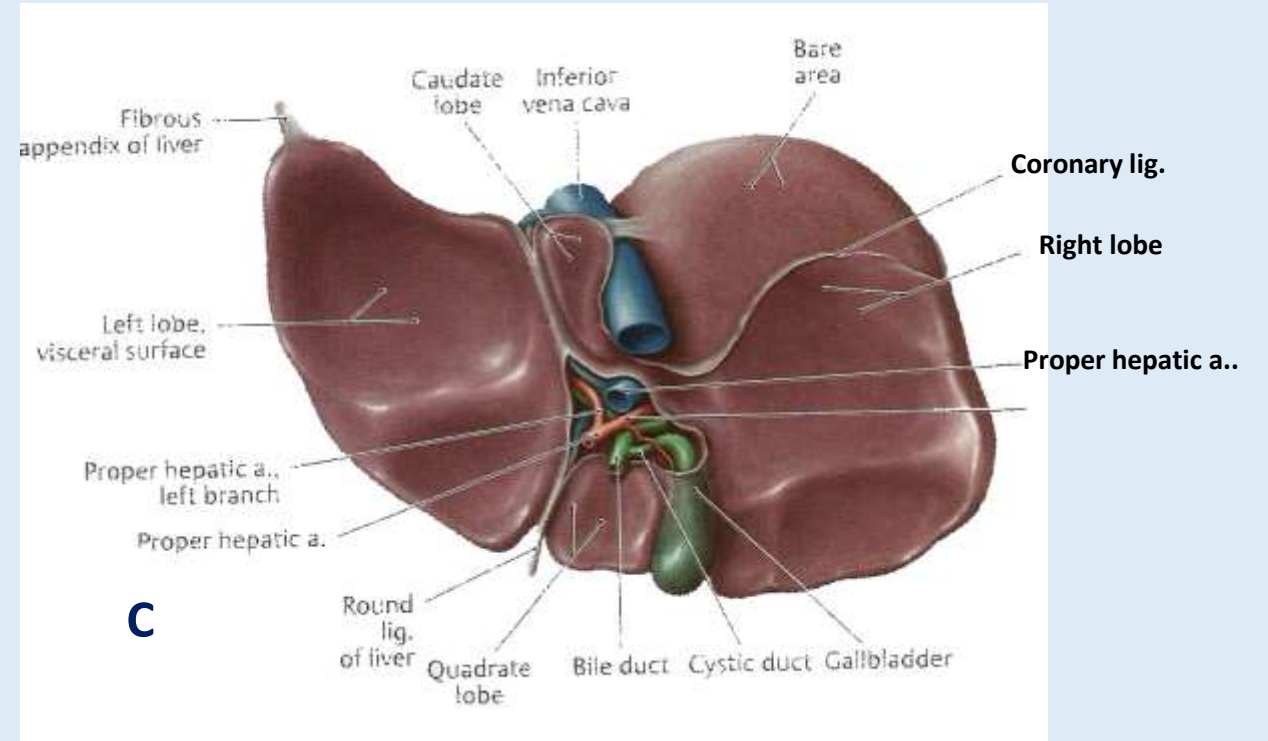
(előnézet)

The liver is divided by its ligaments into four lobes: right, left, caudate, and quadrate.

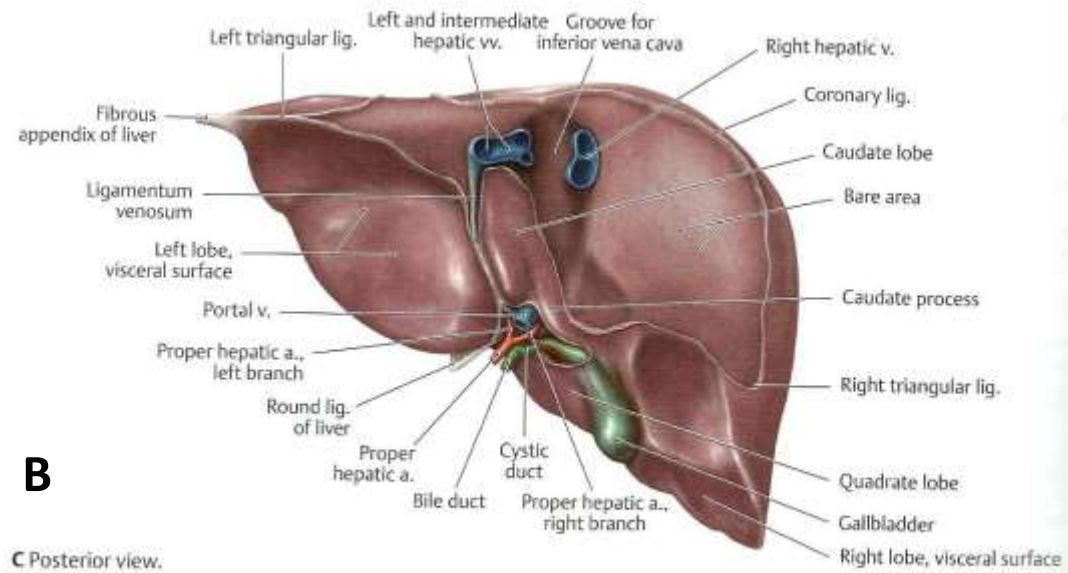


A

A máj felszínei



C

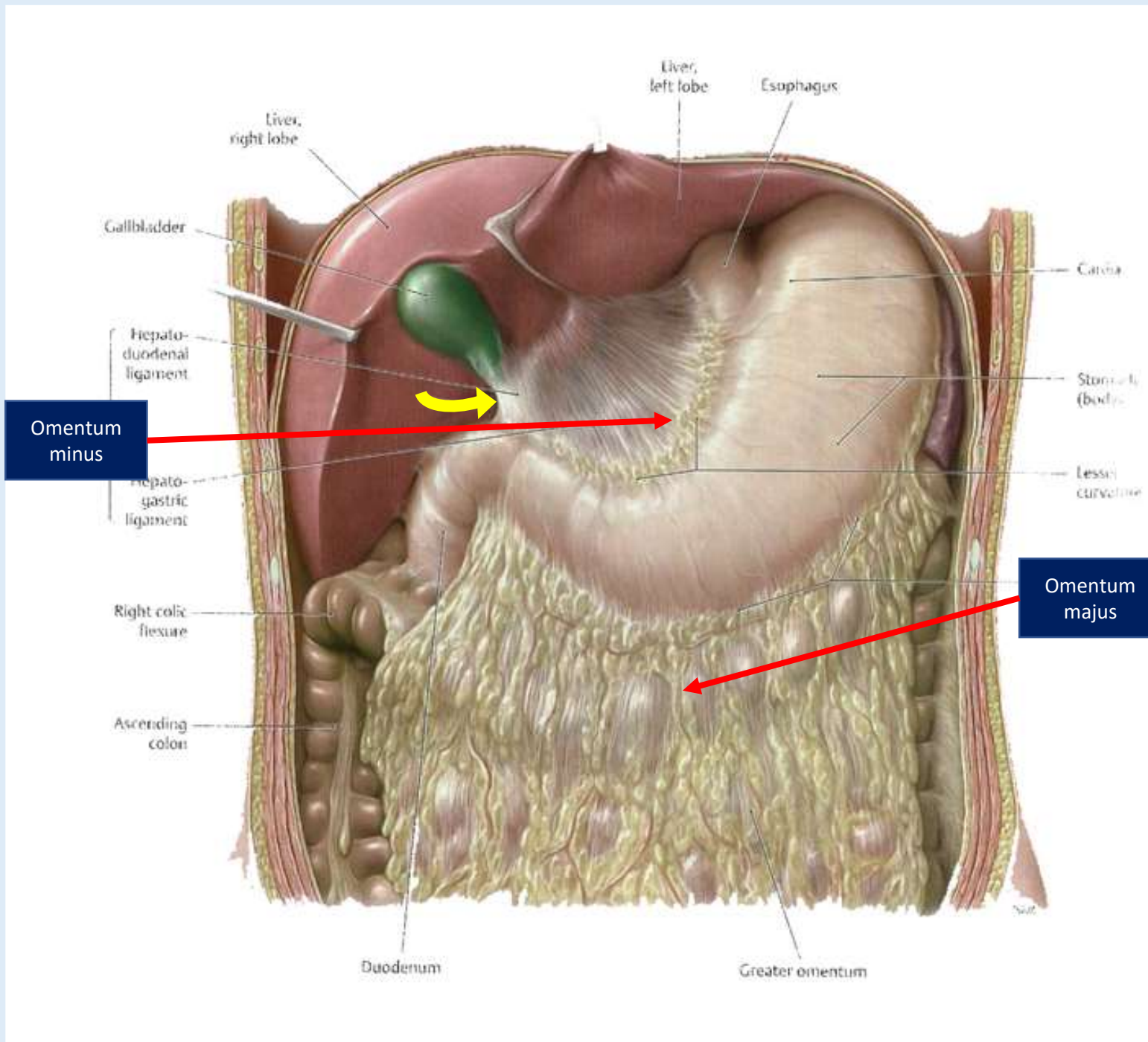


B

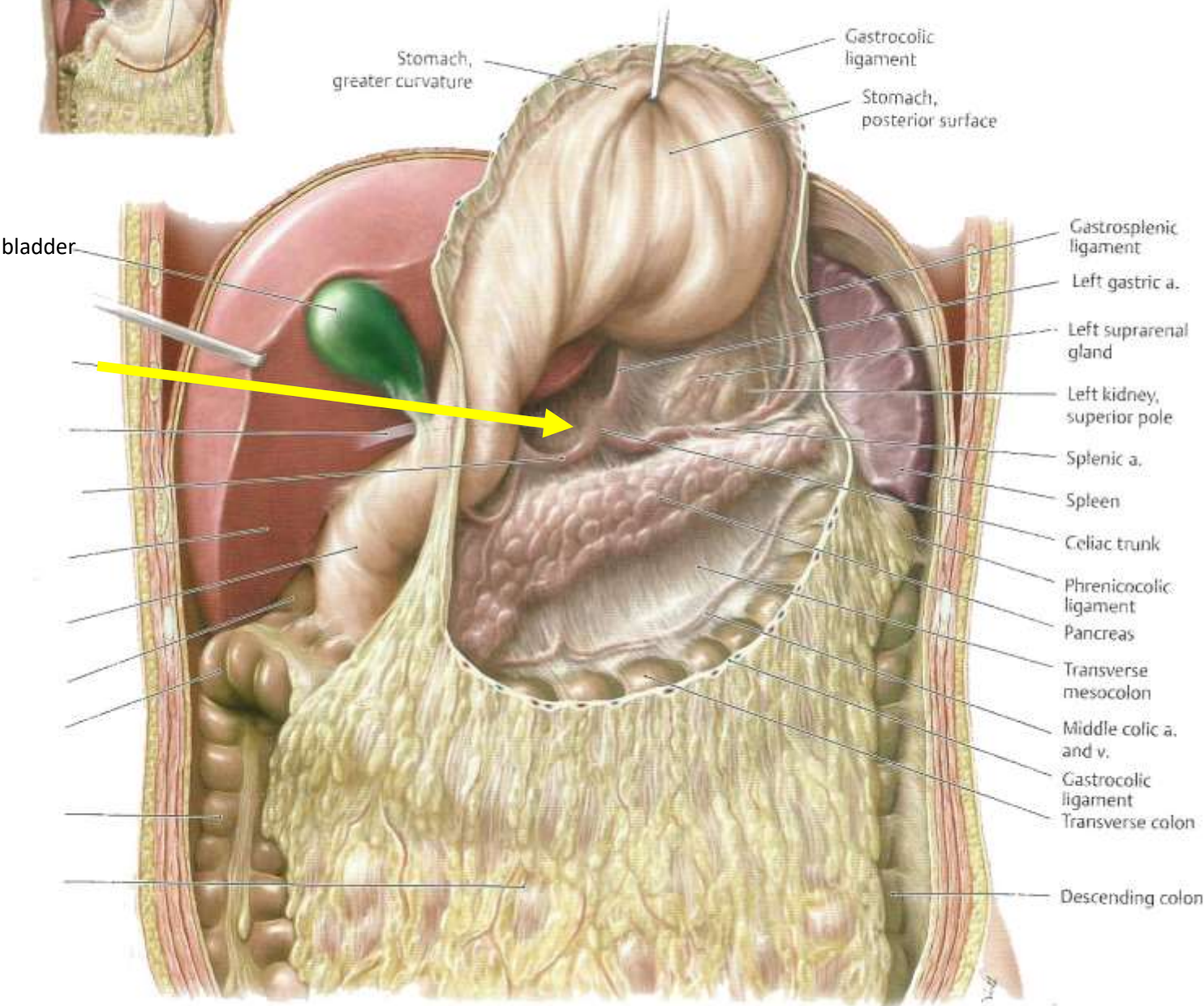
C Posterior view.

A: facies anterior
B: facies posterior
C: facies visceralis

A hasüreg megnyitva, előlnézet



A sárga nyíl a bursa omentalisra mutat

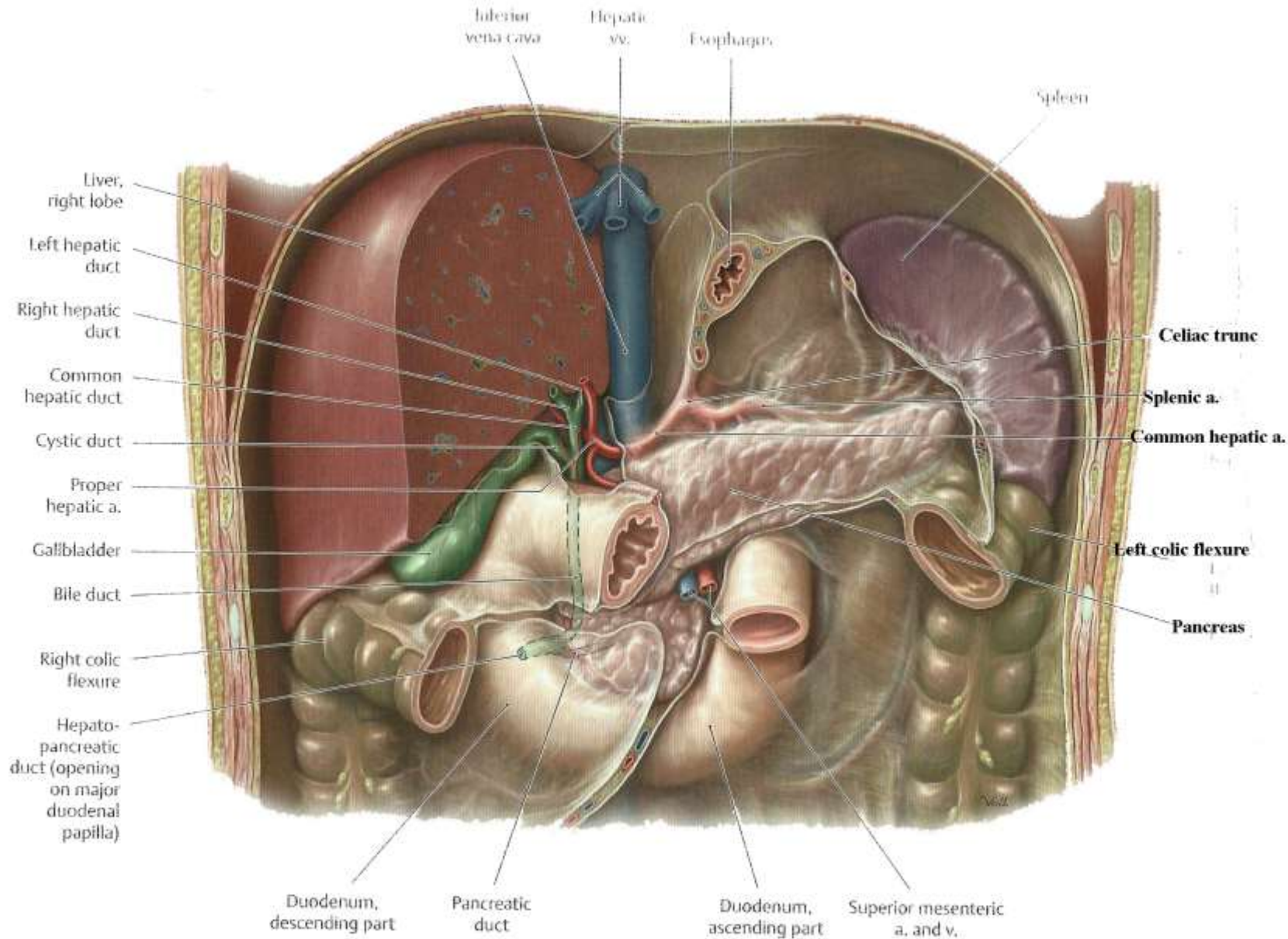


Bursa omentalis

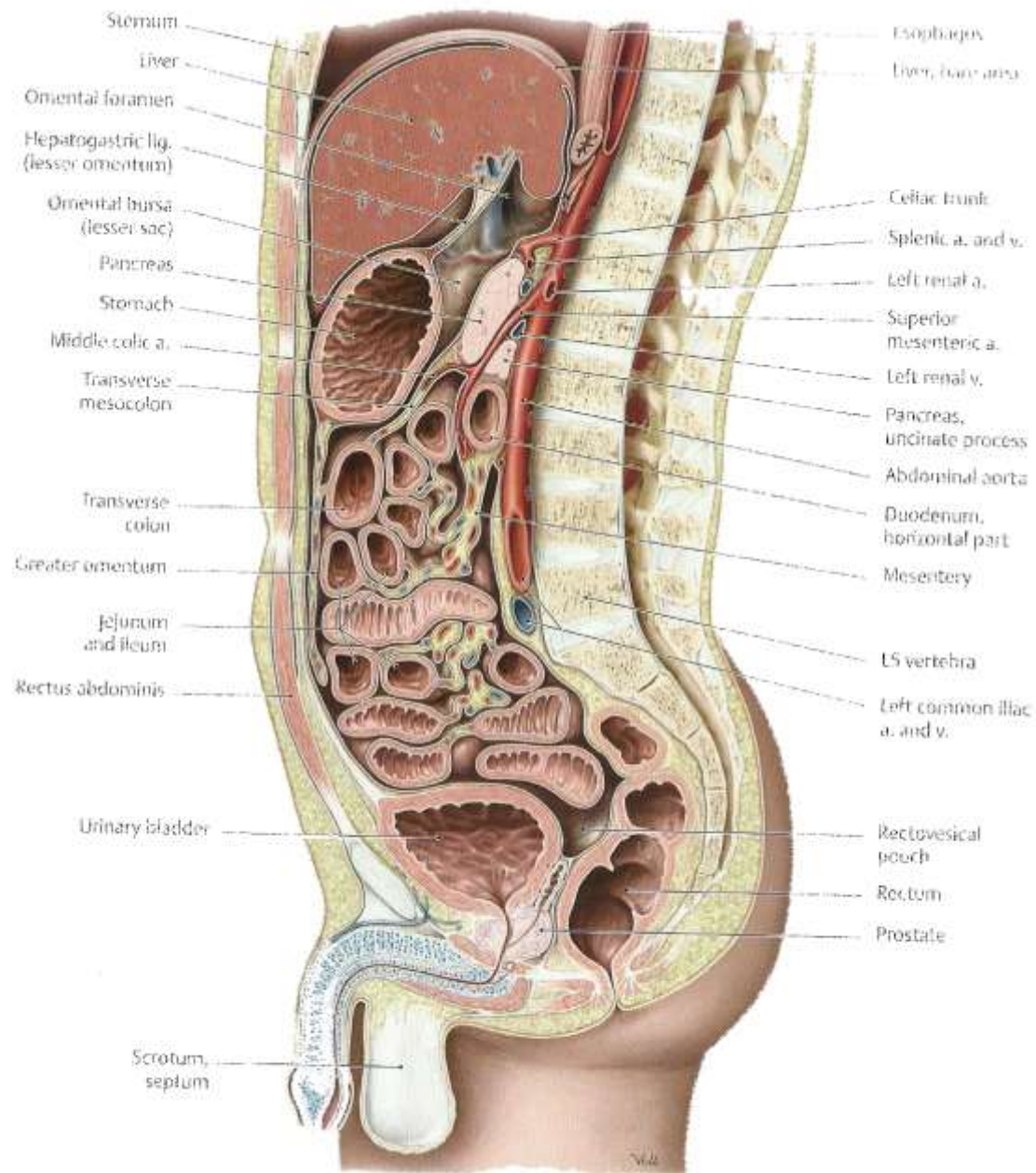
(előlnézet, hátrahúzva: máj, felemelve: gyomor)

Yellow arrow indicates the omental foramen

Máj, epehólyag, epeutak (in situ)

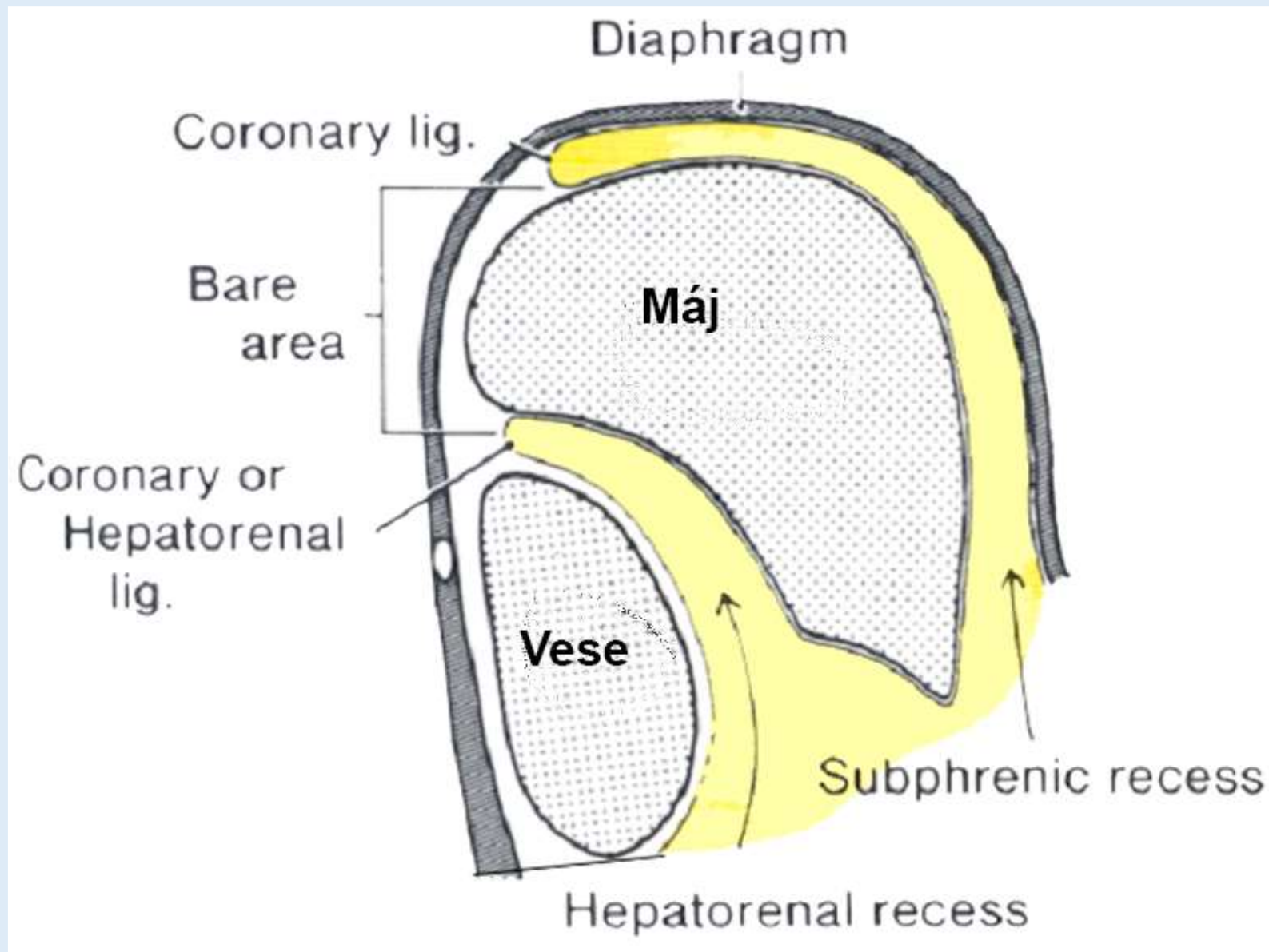


Jelenléti QR kód a következő dián!

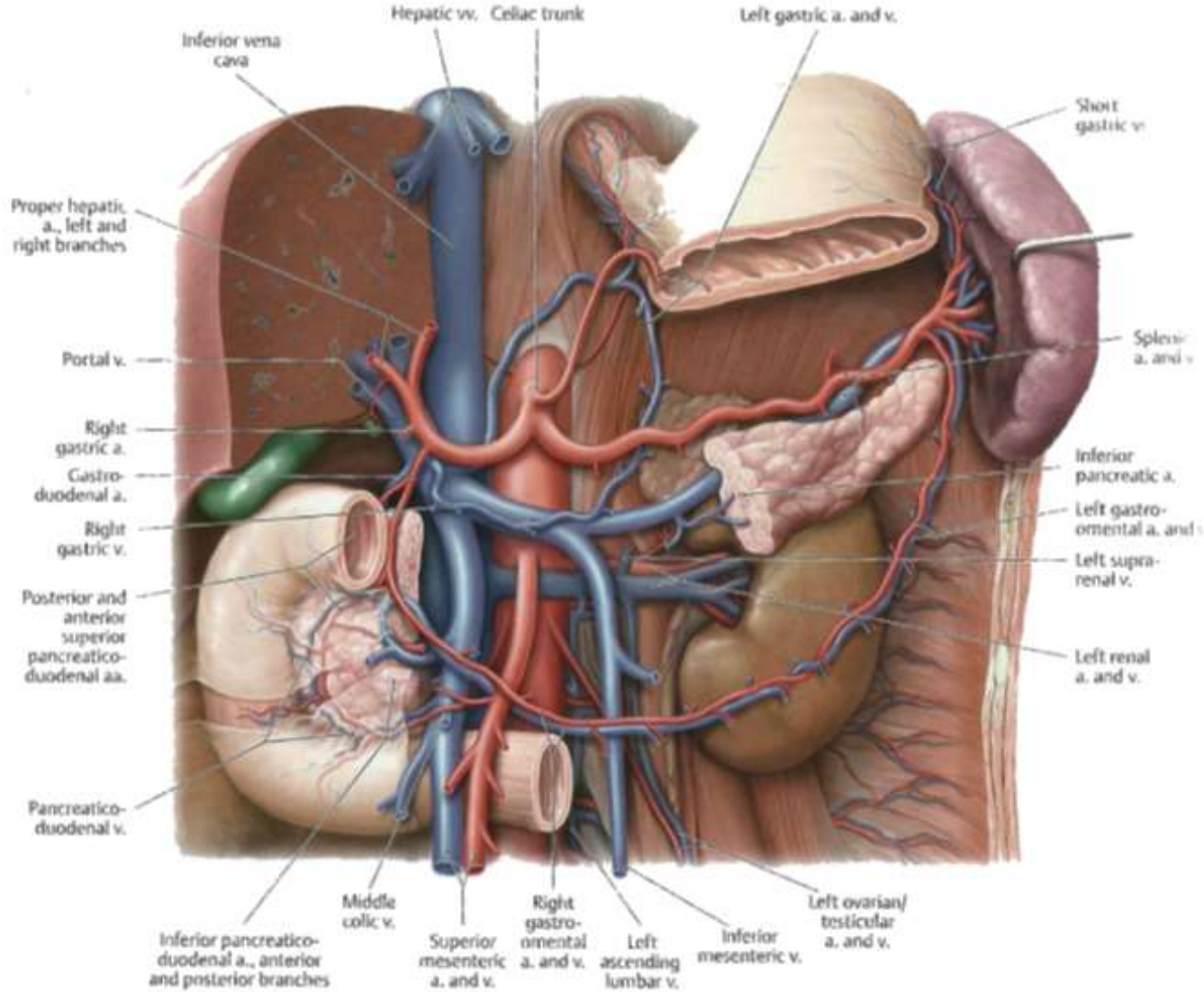


A hasüreg és a medence szervei. (median sagitalis sík)

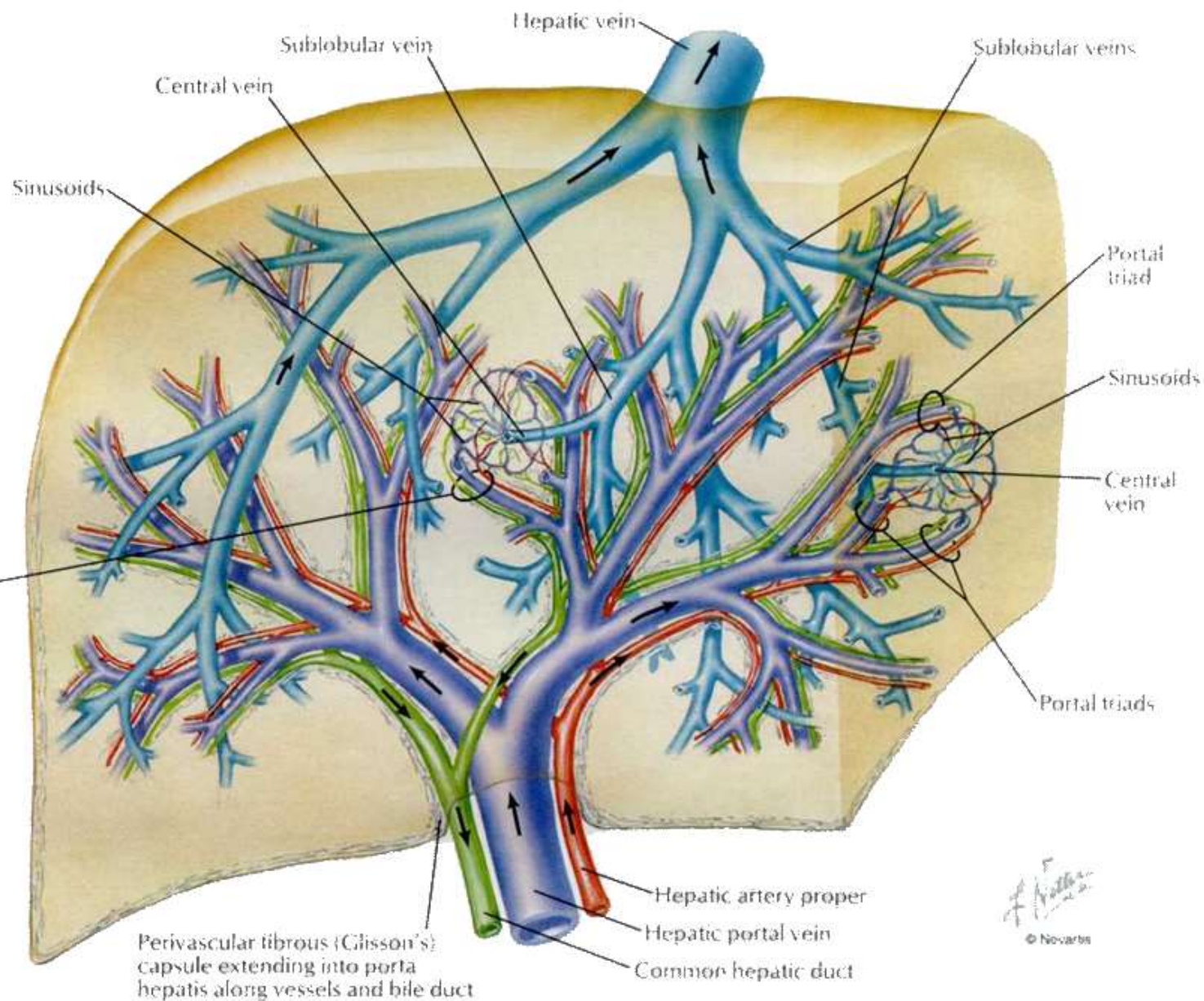
A máj és a jobb vese viszonya



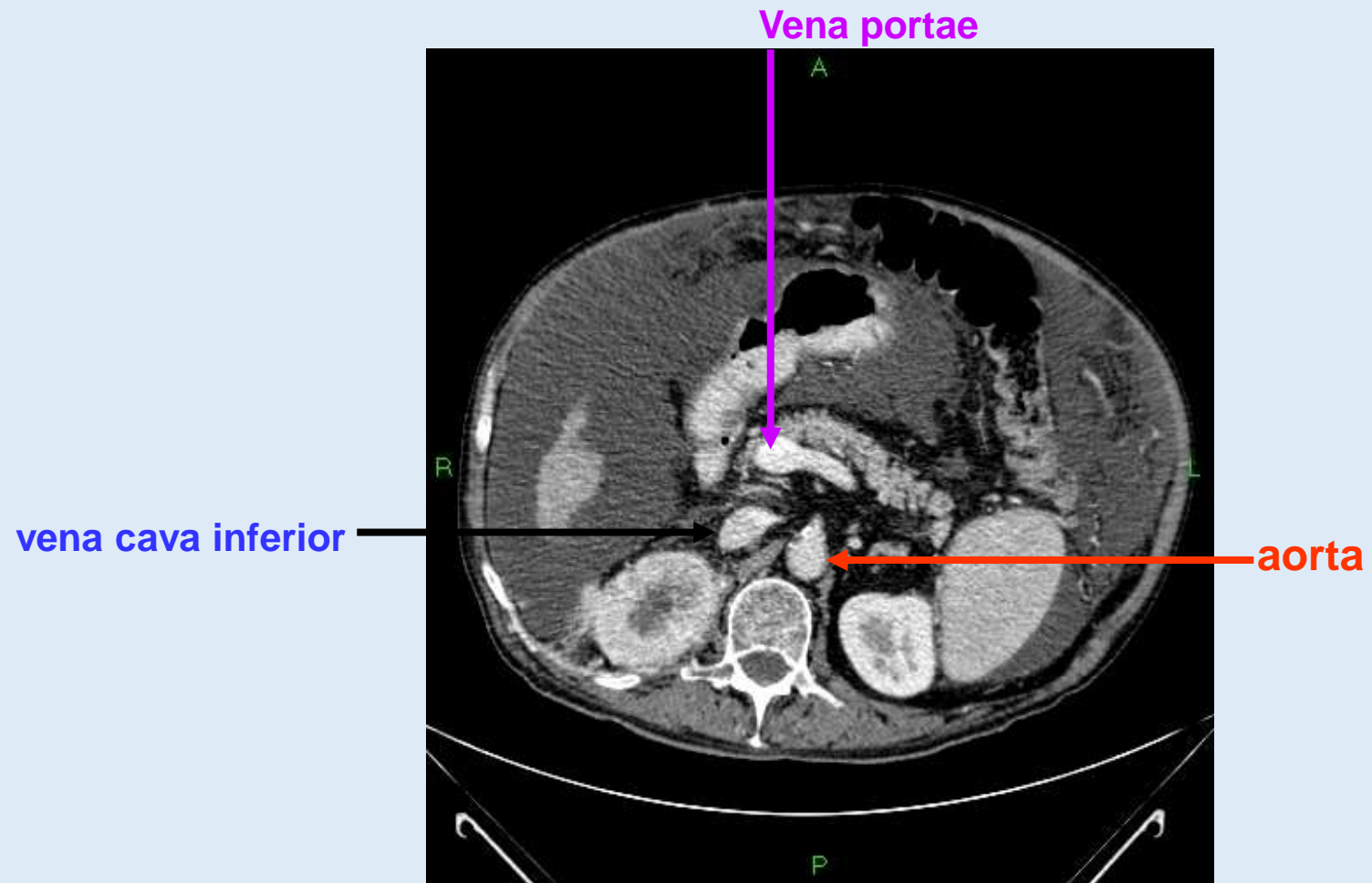
Aorta abdominalis, vena portae



Intrahepatic vénás rendszerek (v. portae és v. hepatica)

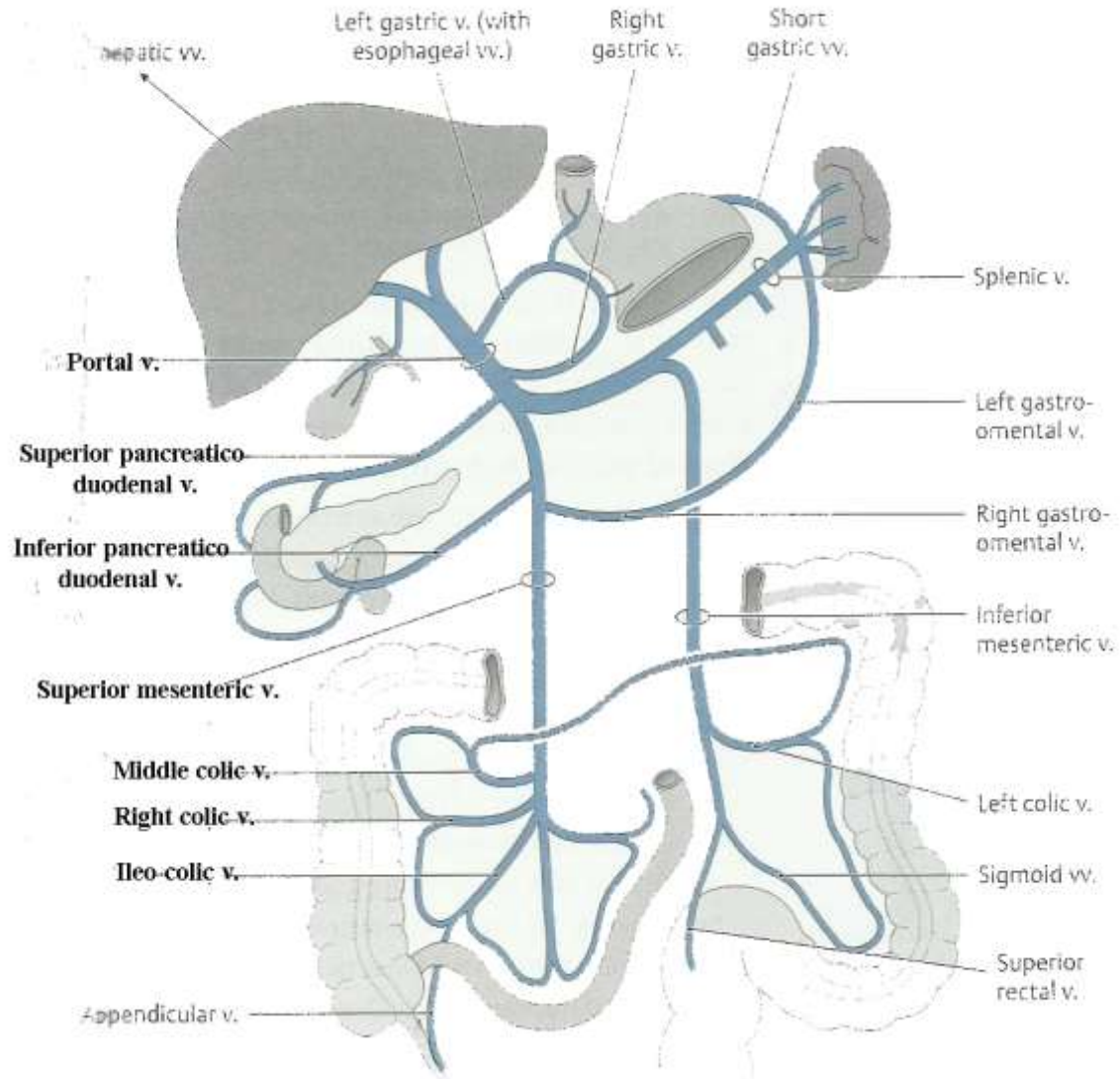


Drawing: F. Netter
©: NOVARTIS

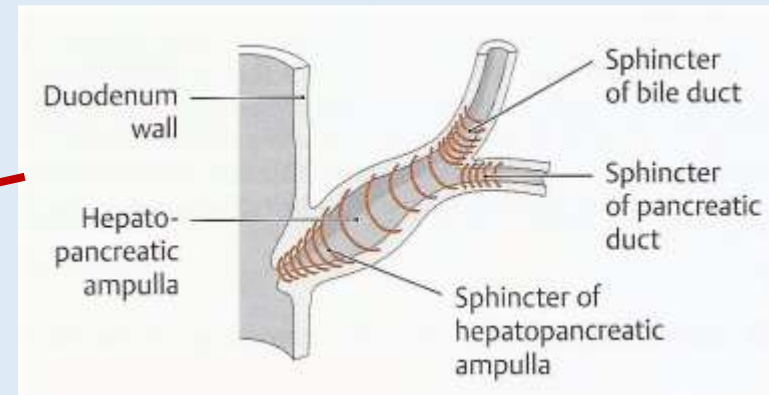
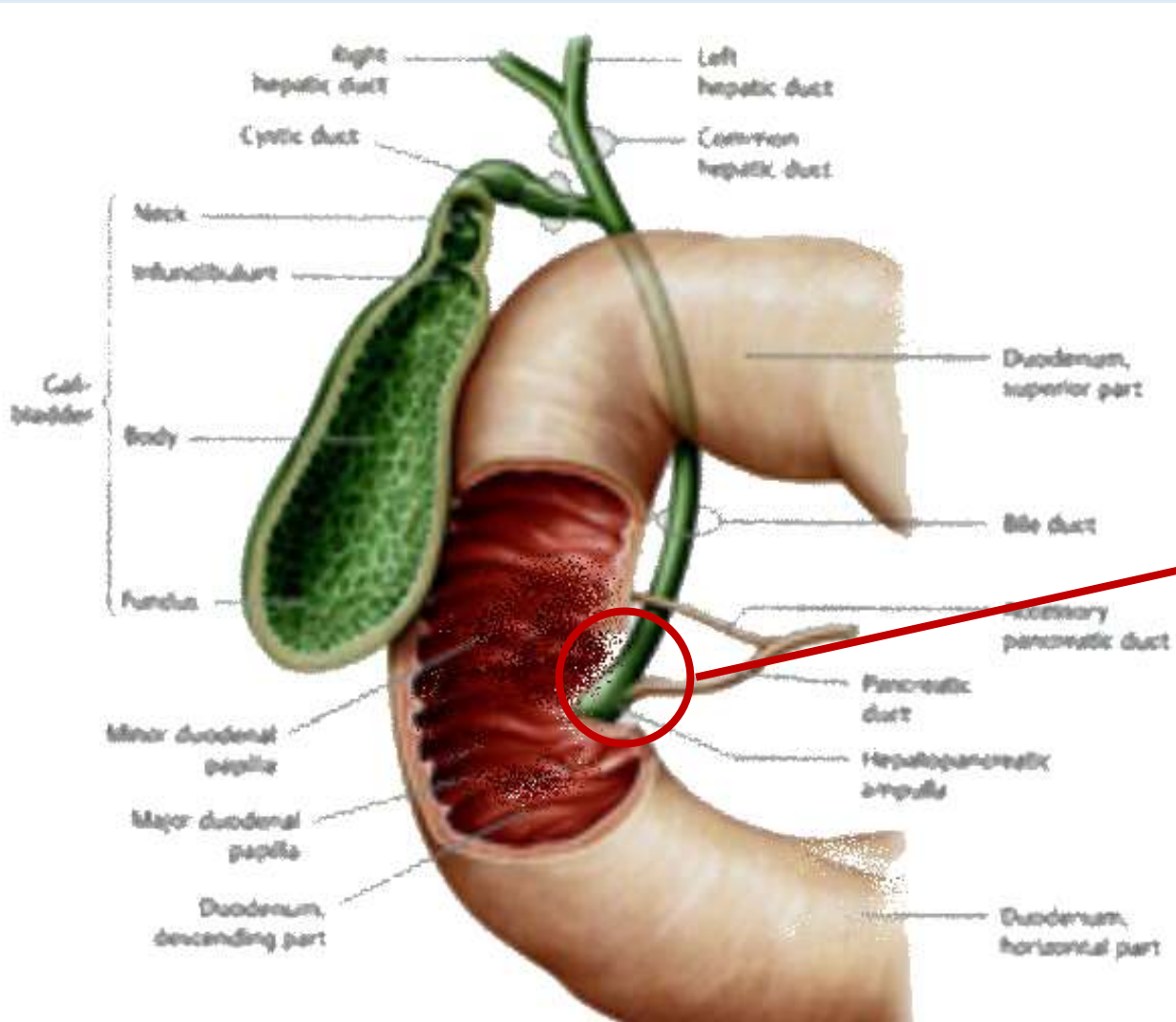


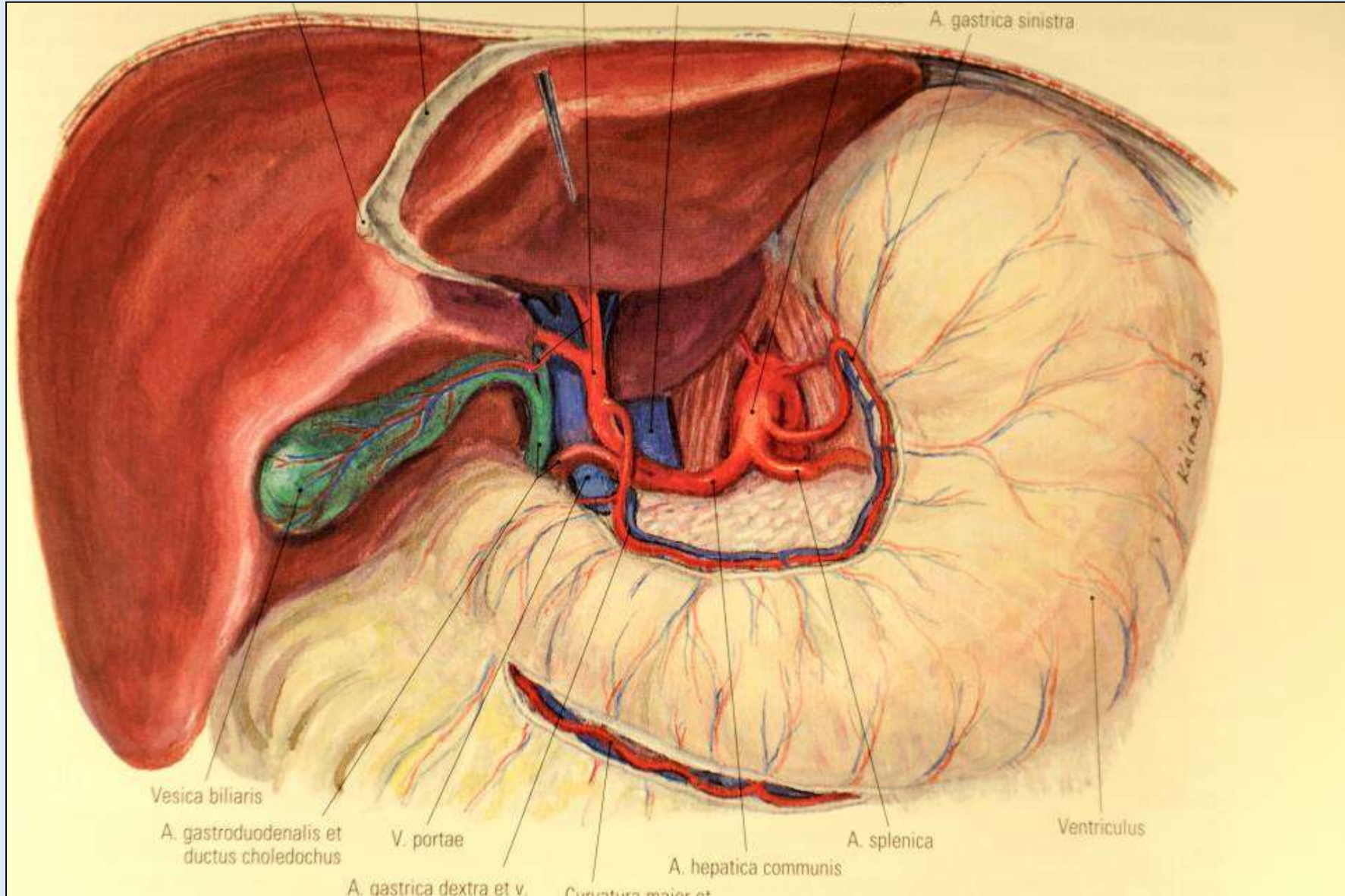
Dr. Mester Ádám felvétele

A v. portae rendszere



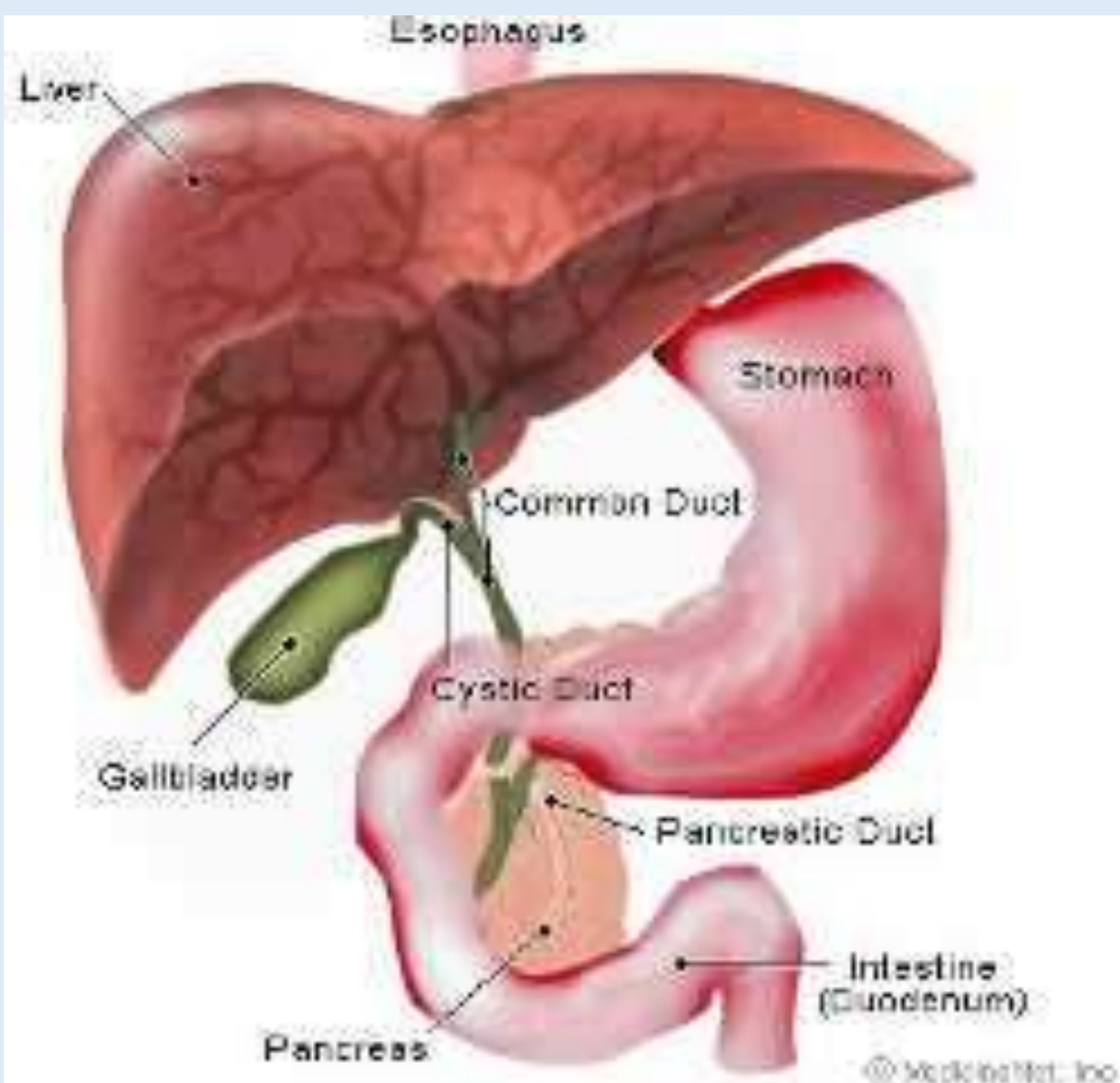
Extrahepatic epeutak és a sphincter rendszer





Epehólyag

(*in situ* és artériás vérellátása)



Epeutak RTG képe (kontraszt anyaggal feltöltés után)

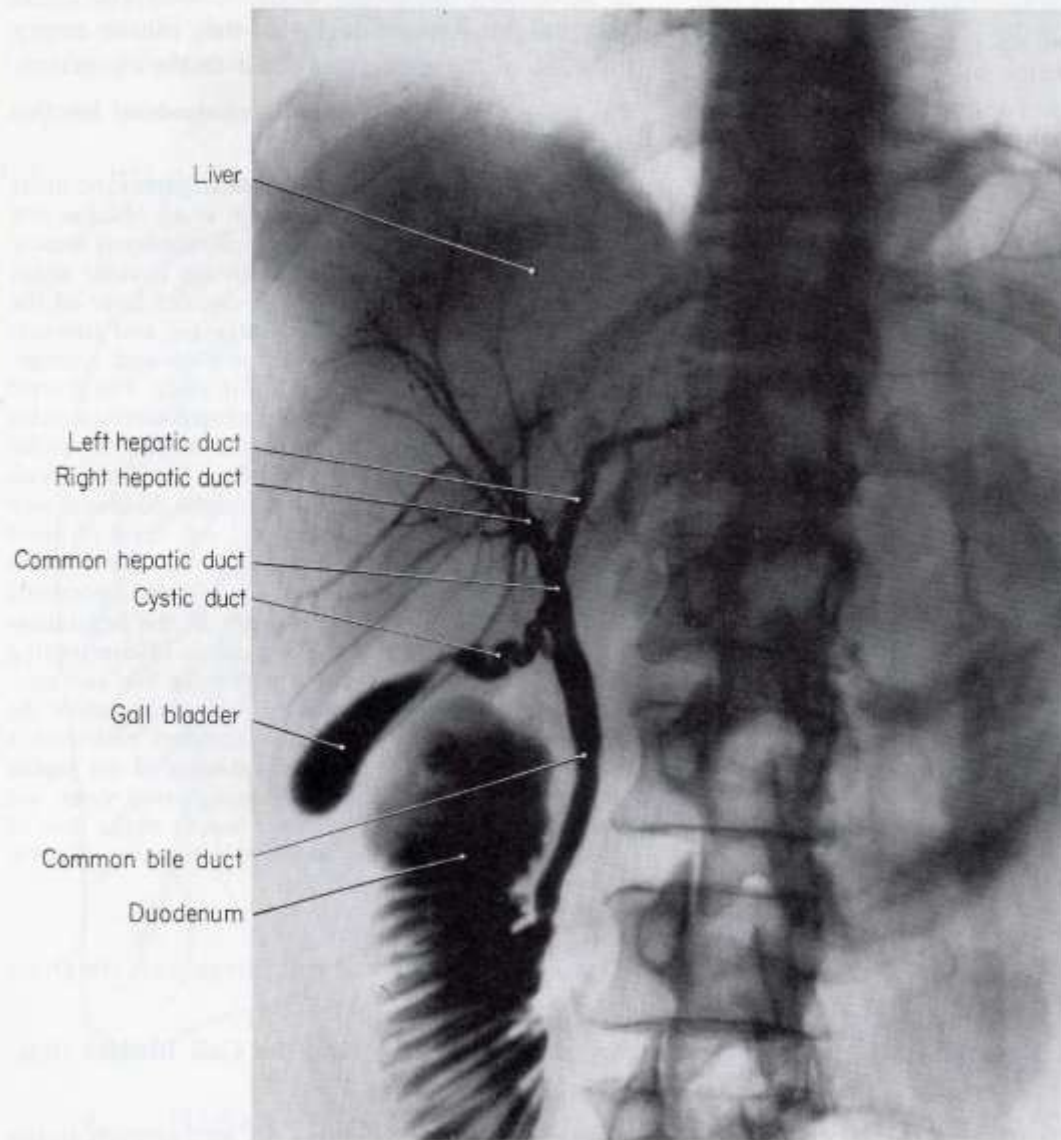
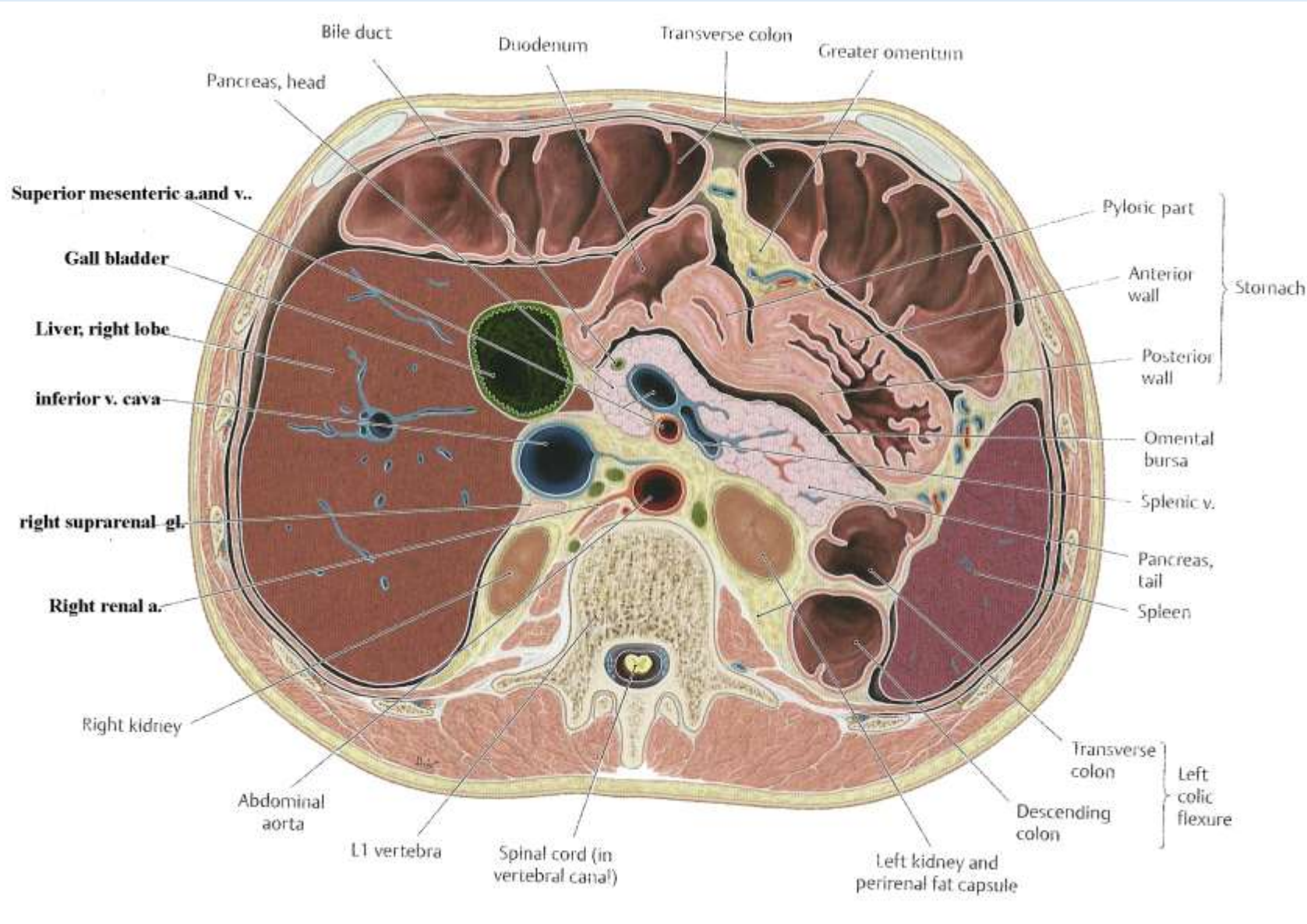


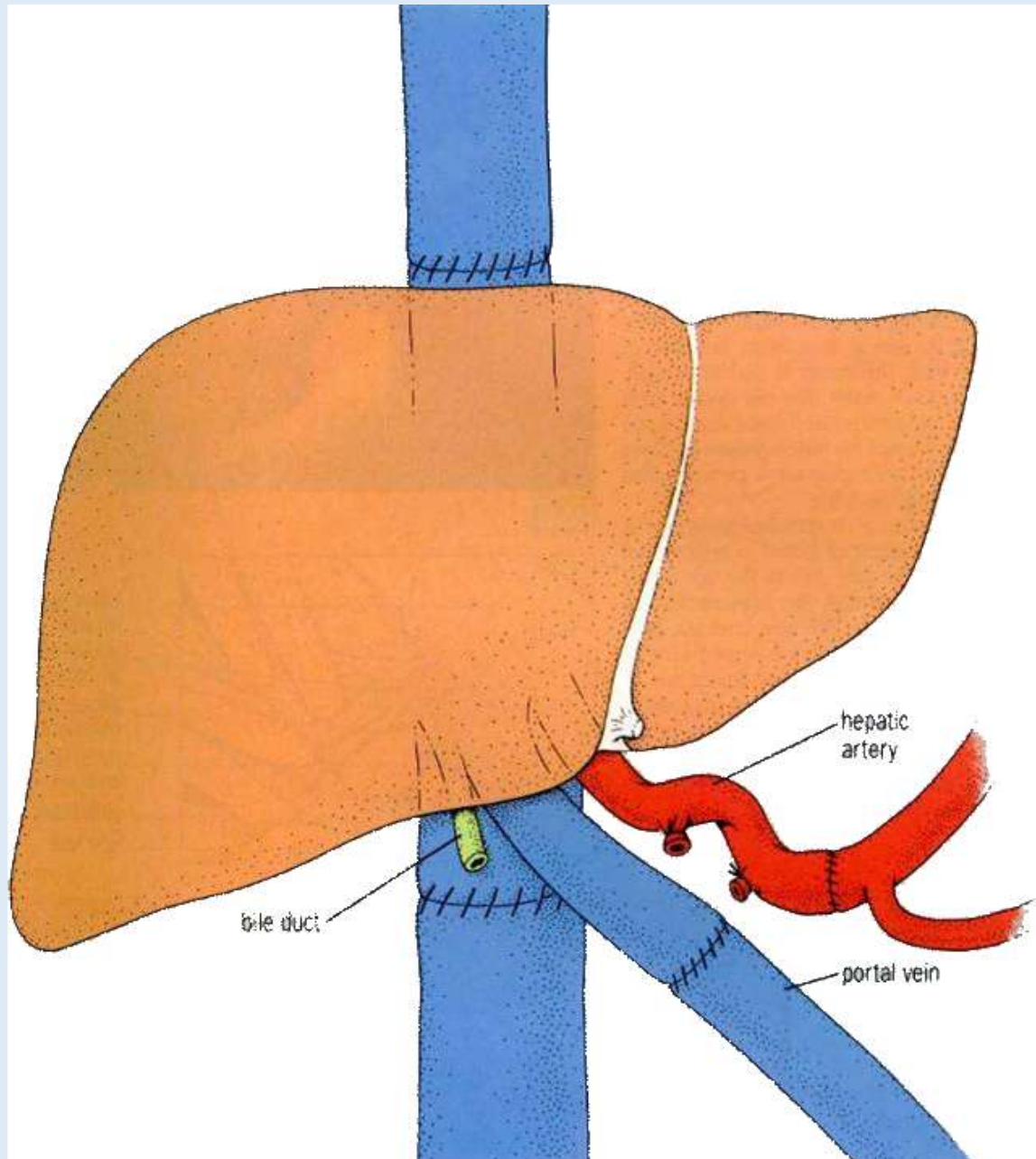
Fig. 341 A percutaneous cholangiogram.

A hasüreg horizontális metszete az L1 csigolya magasságában

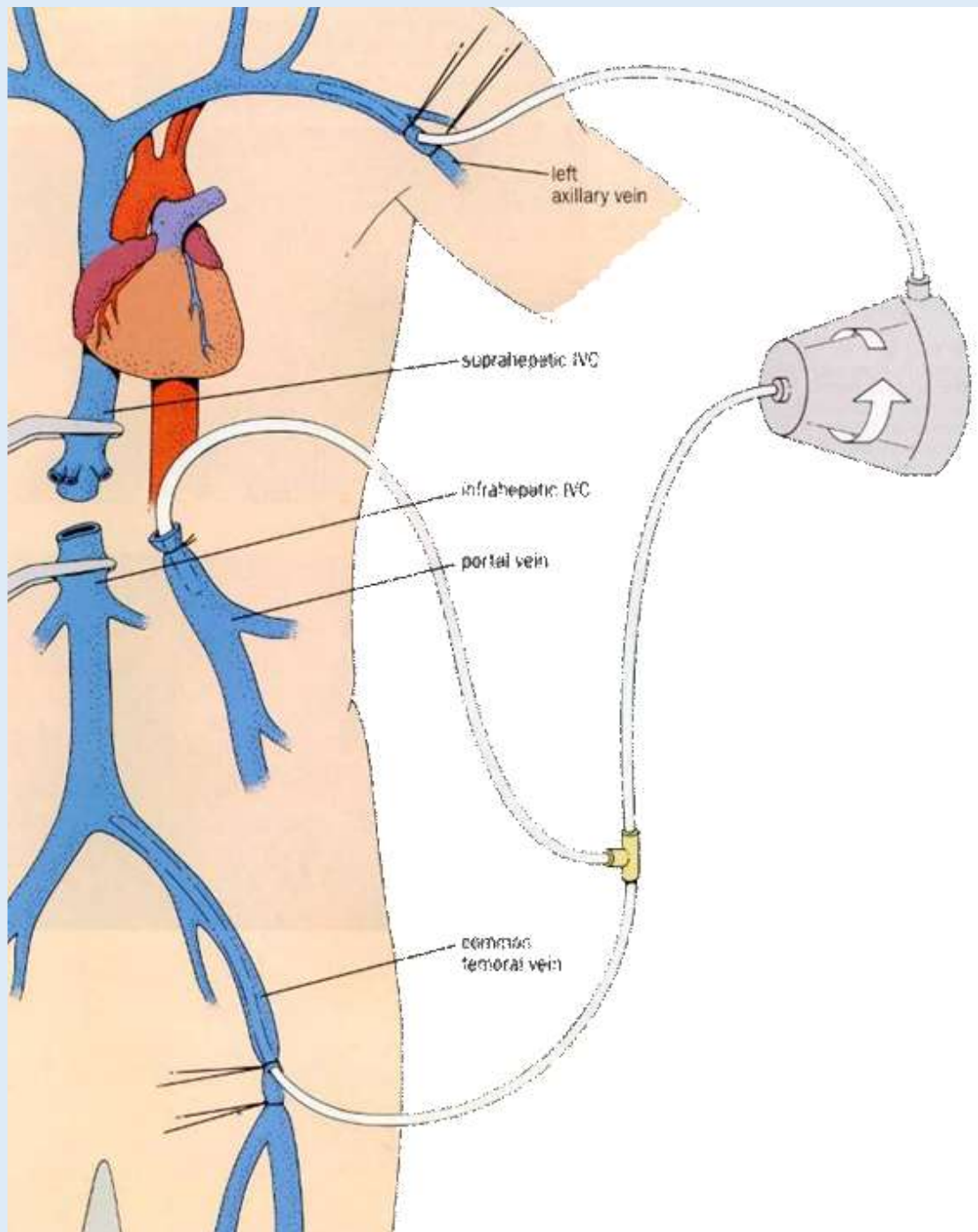


Máj transzplantáció 2

(Vázlatos rajz)



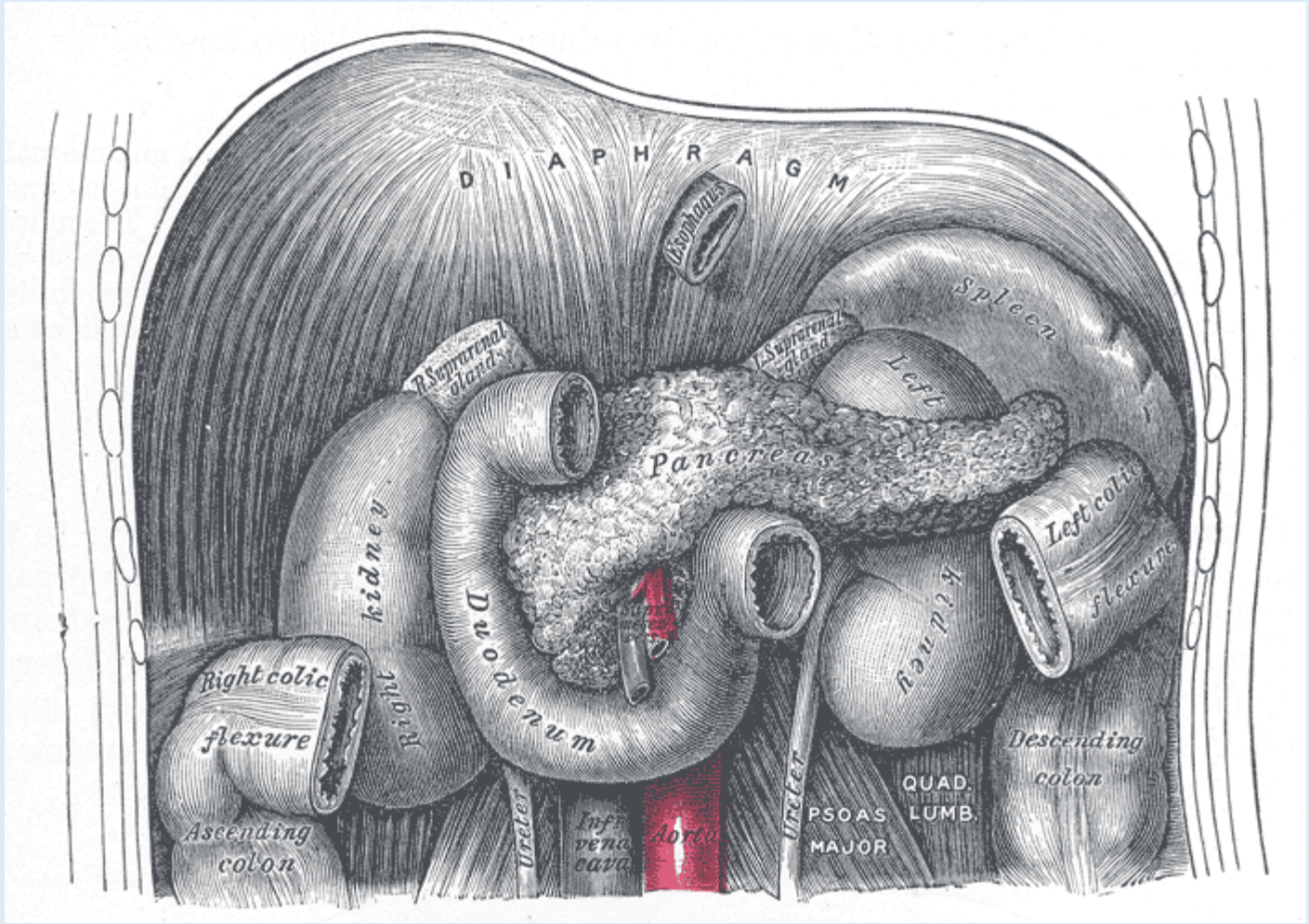
prof. Perner Ferenc engedélyével



Máj transzplantáció 1

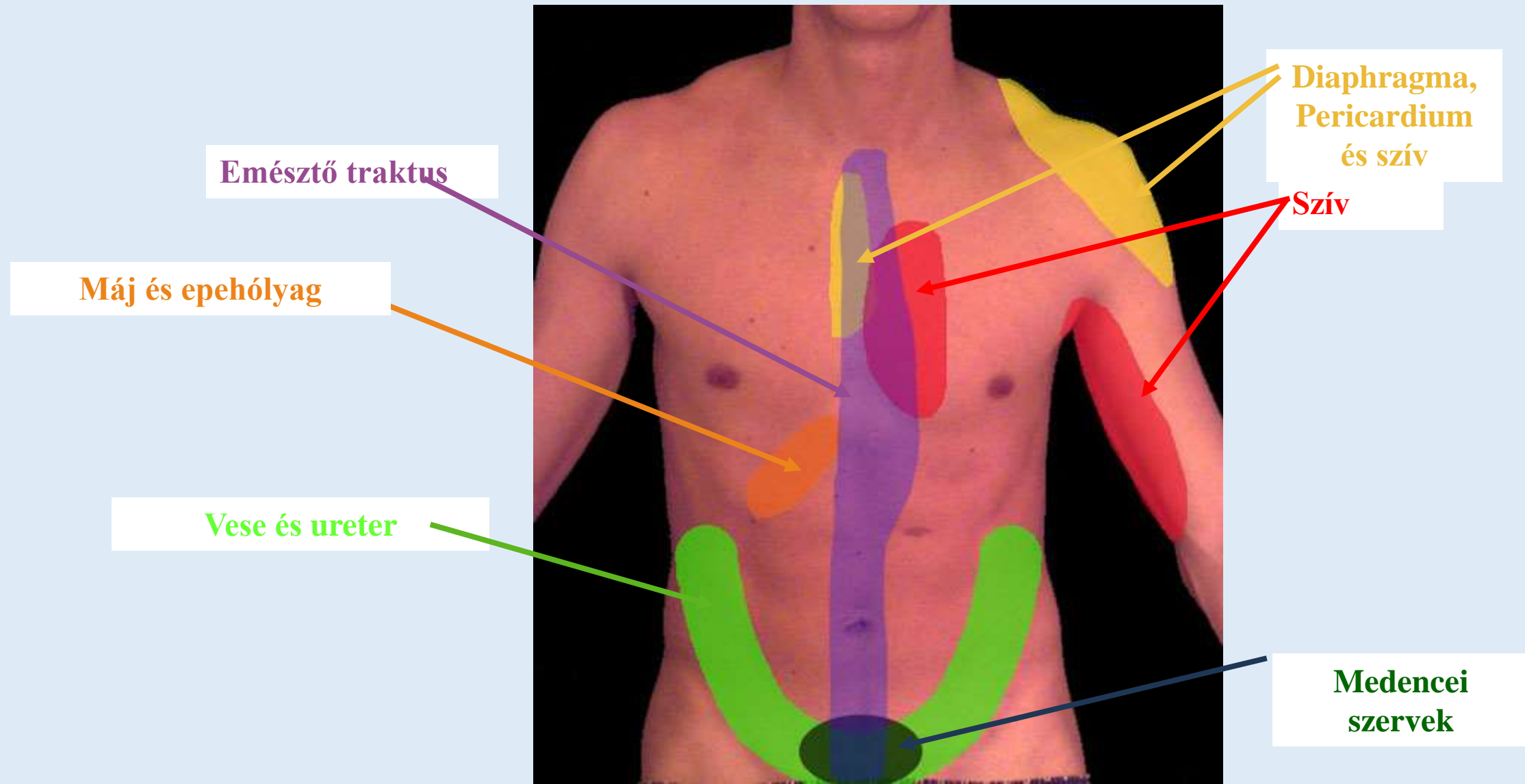
(Vázlatos rajz)

prof. Perner Ferenc engedélyével

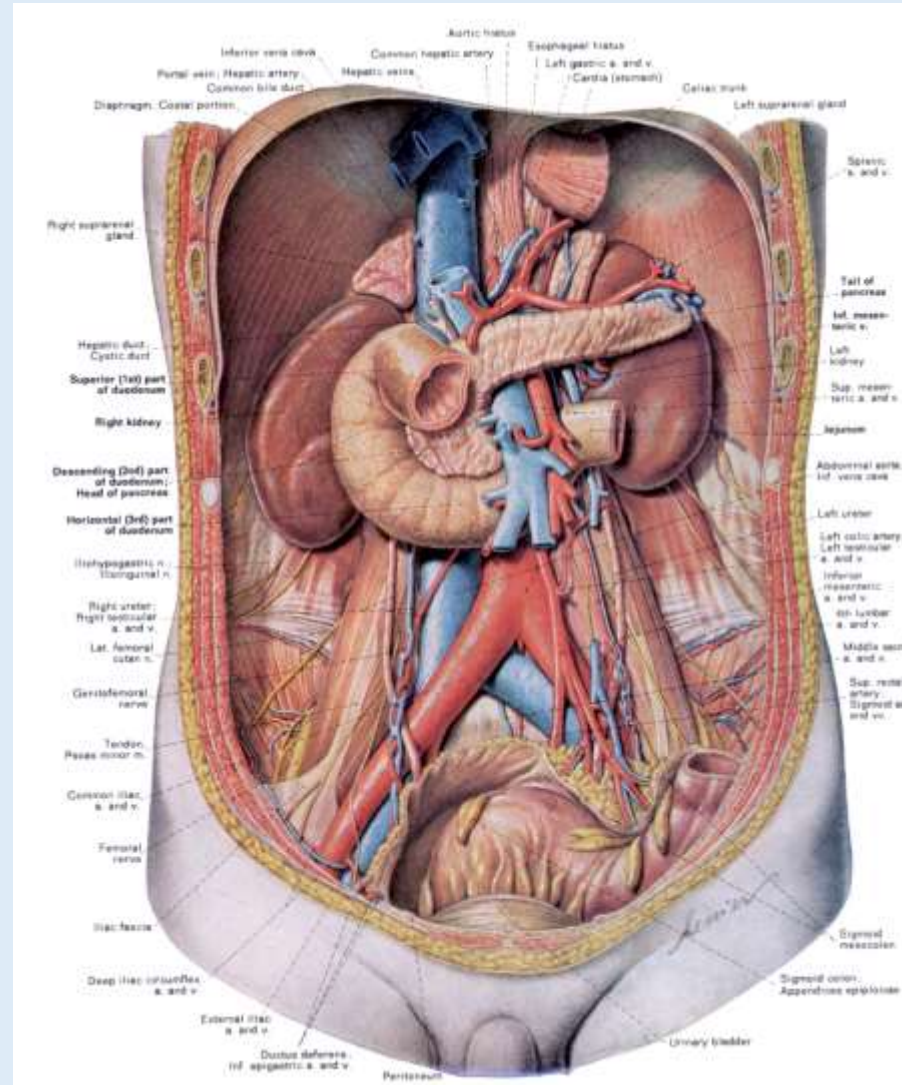


<https://upload.wikimedia.org/wikipedia/commons/0/06/Gray1098.png>

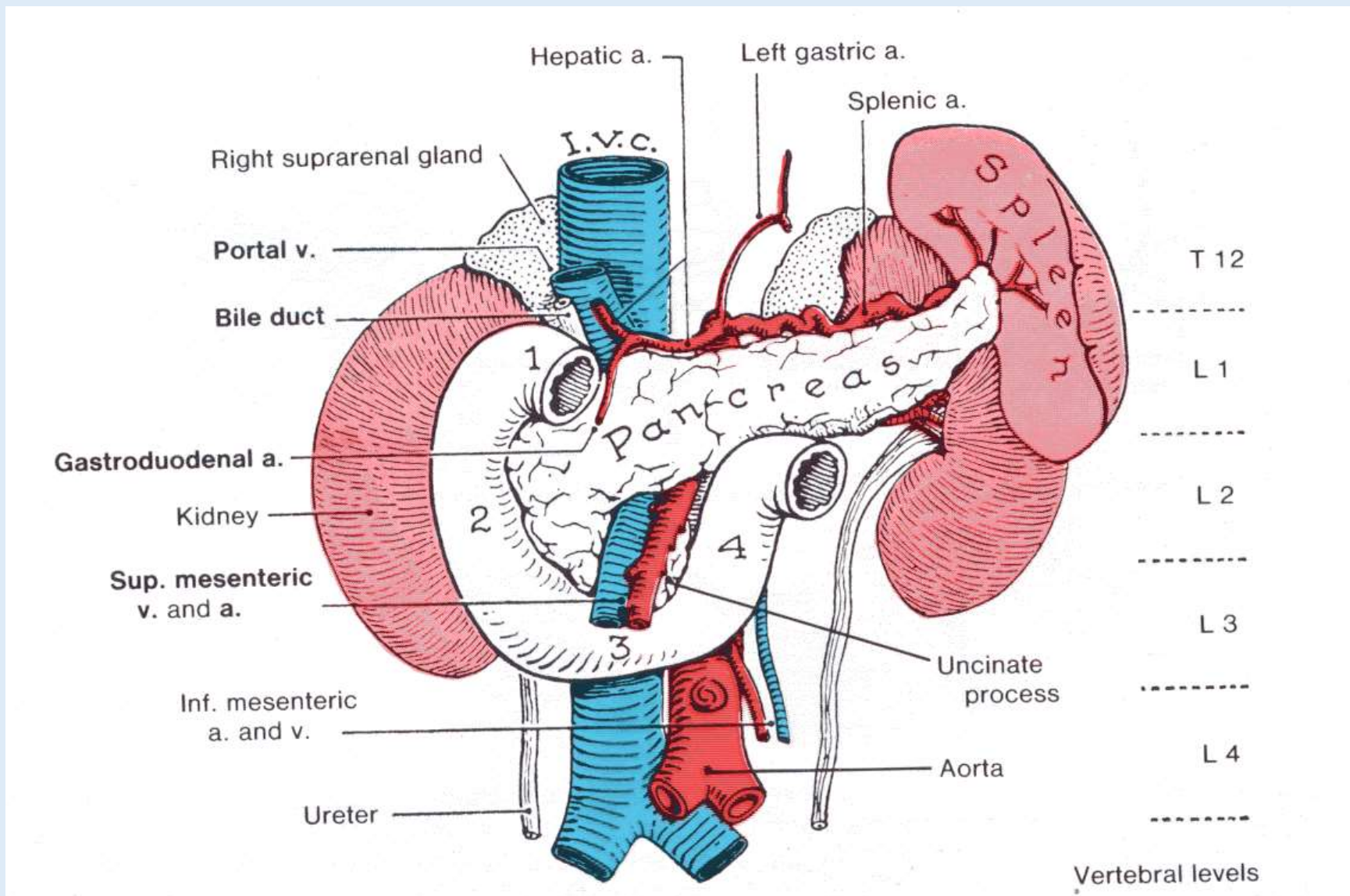
A zsigeri fájdalom kisugárzása a bőrre



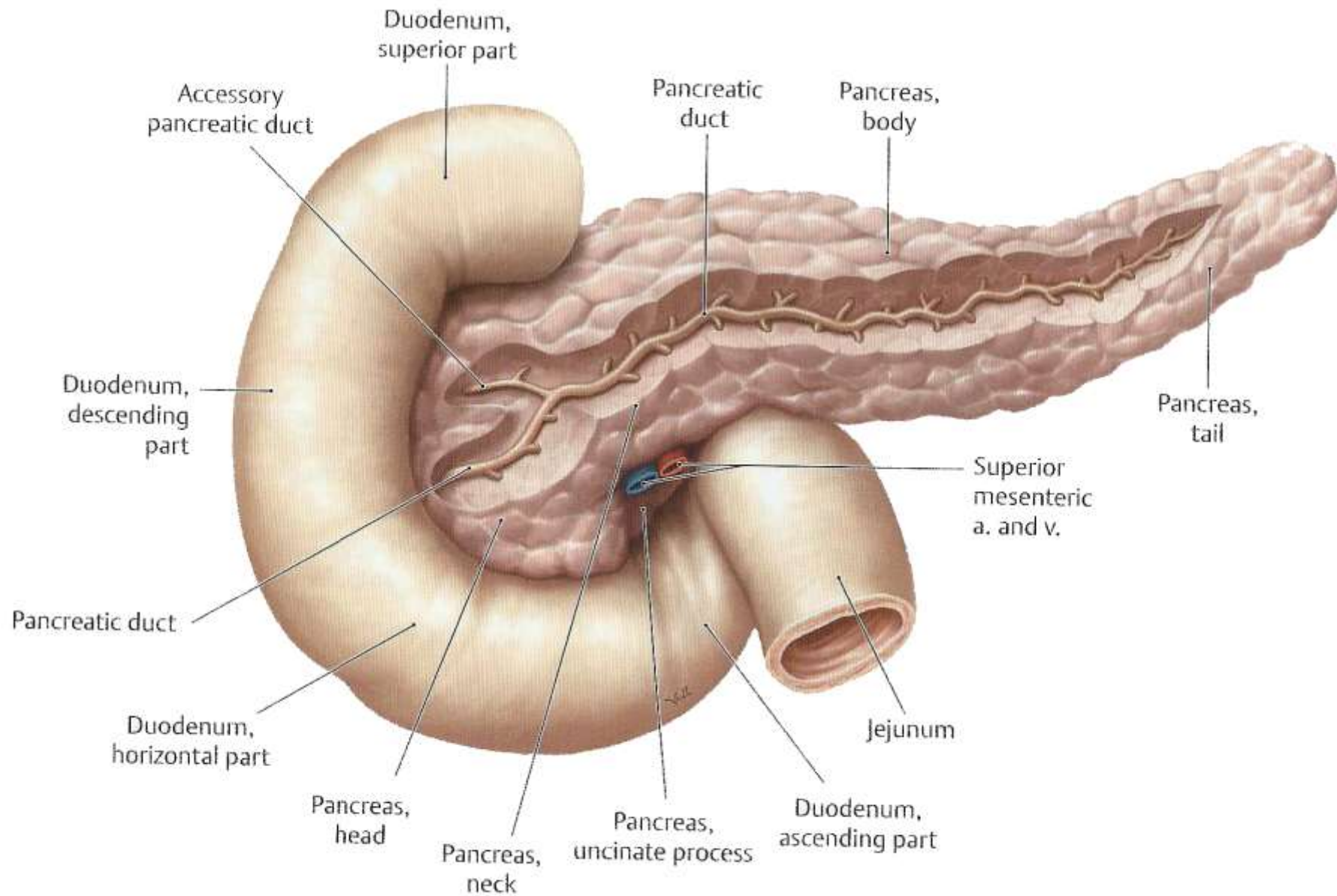
A retroperitonealis zsigerek elhelyezkedése

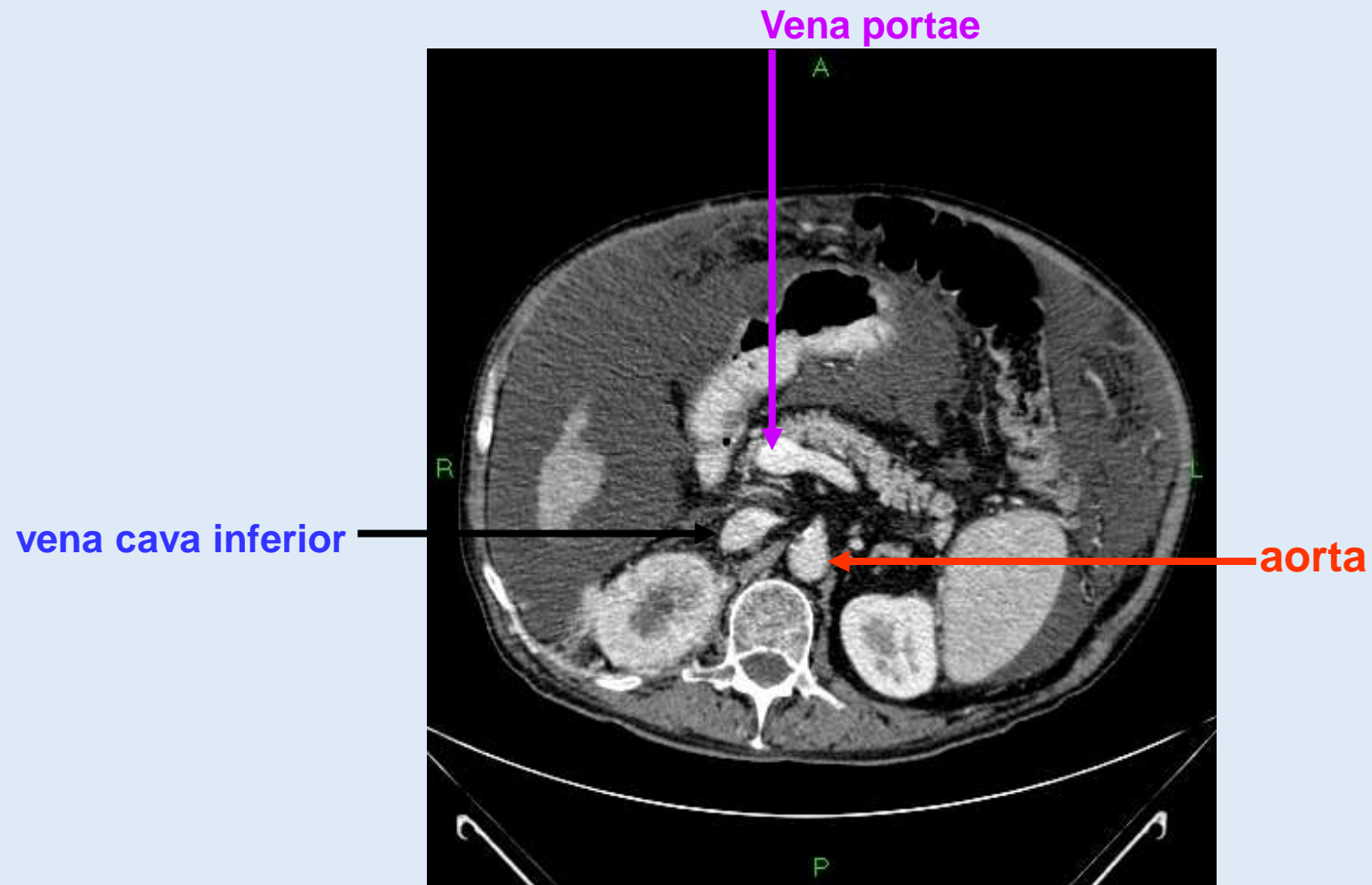


A pancreas topographiája



Pancreas and duodenum





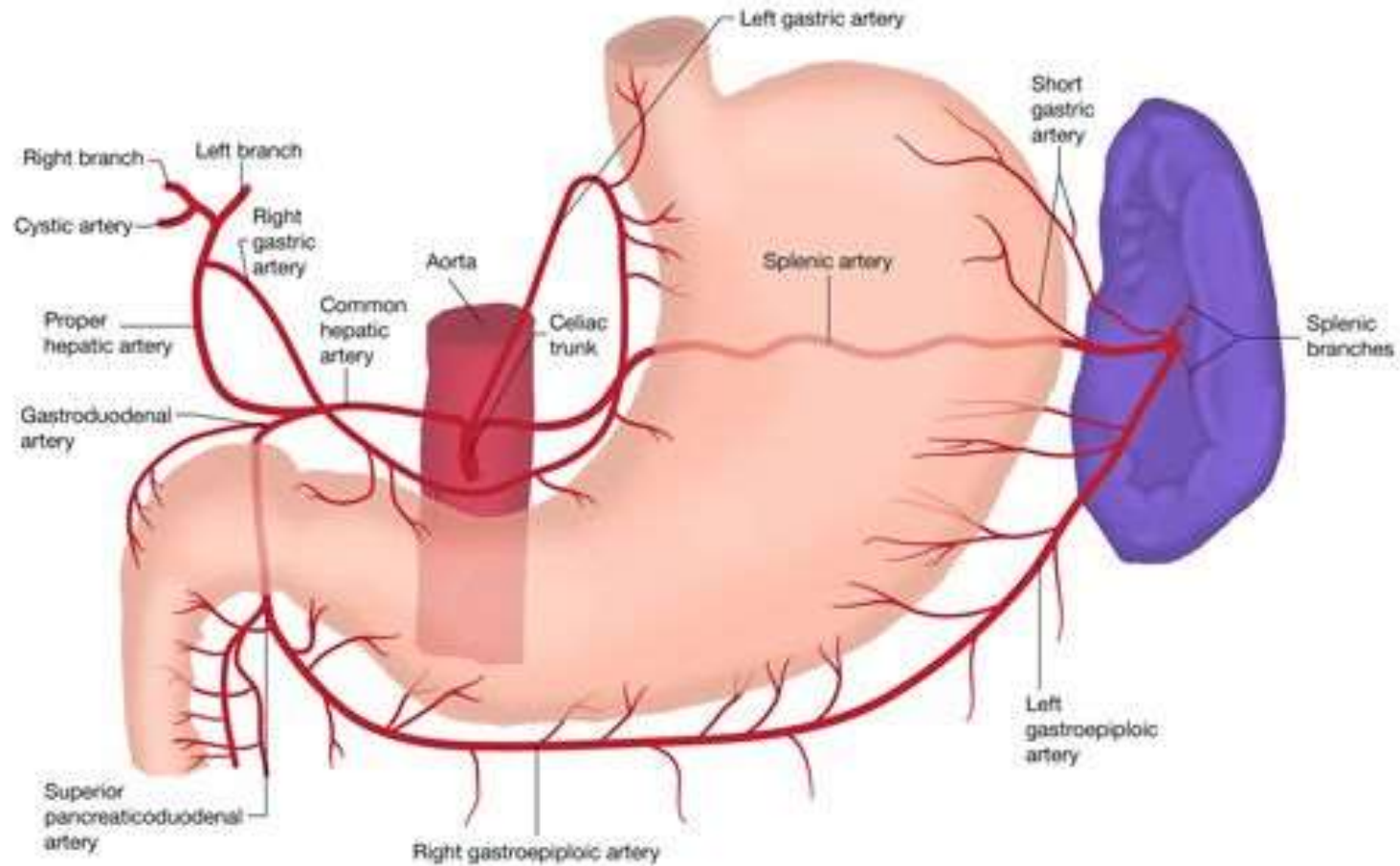
Dr. Mester Ádám felvétele



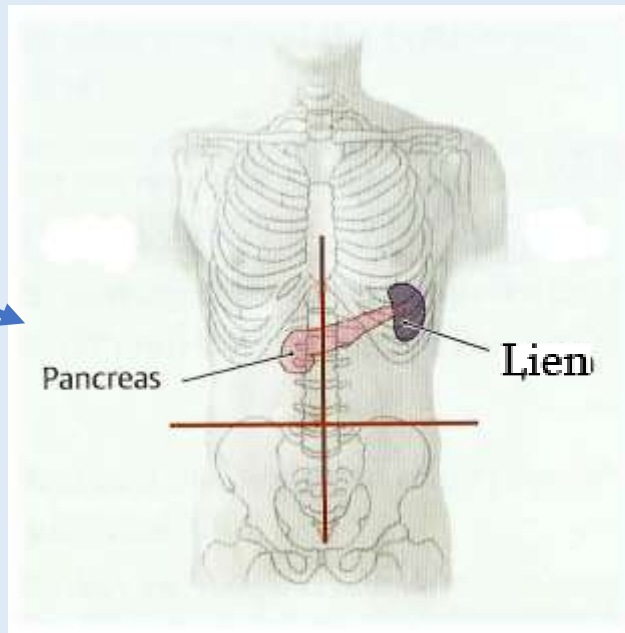
A pancreas transplantáció vázlatos rajza

prof. Perner Ferenc engedélyével

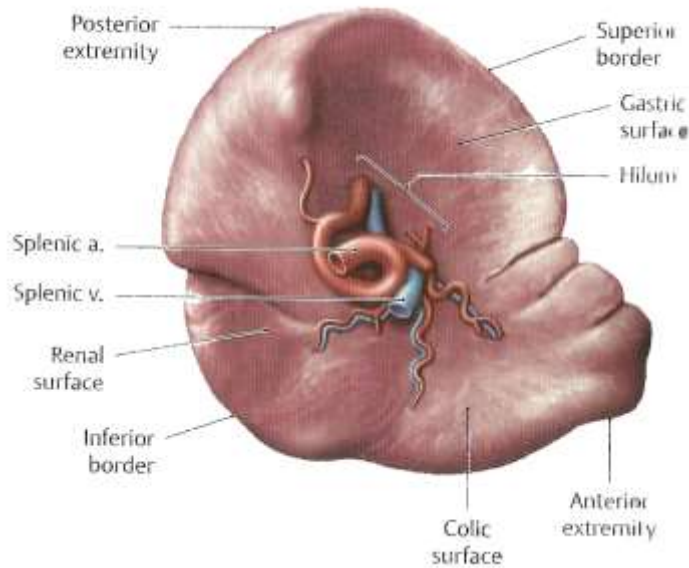
A lép kissé ovális formájú, hilusa a medialis szél alsó felszínén helyezkedik el



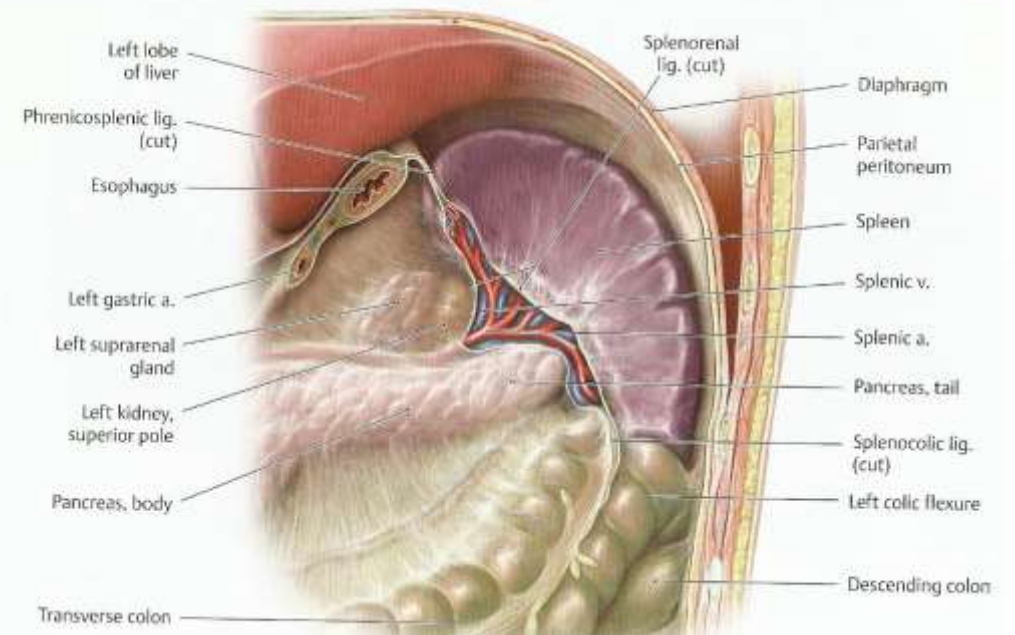
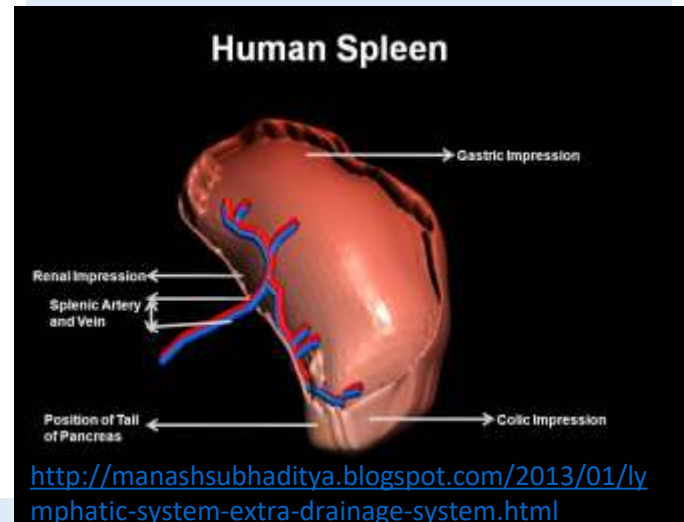
A pancreas és a lép
helyzete a
hasüregben
(elől nézet)



Lép

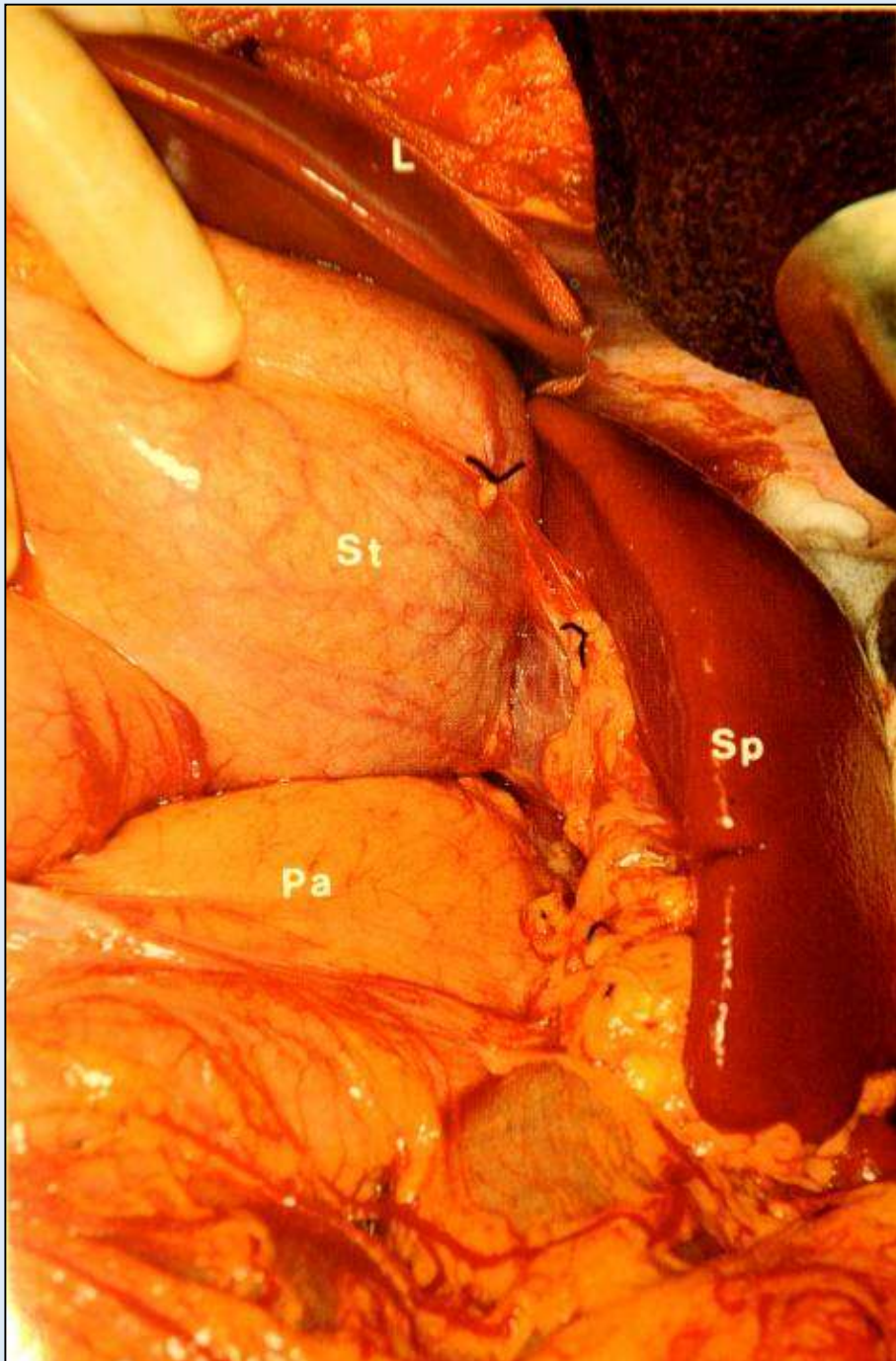


Lien, facies visceralis



Lien, *in situ*

From: A. Gilroy: Anatomy, an Essential Textbook. Thieme, 2013



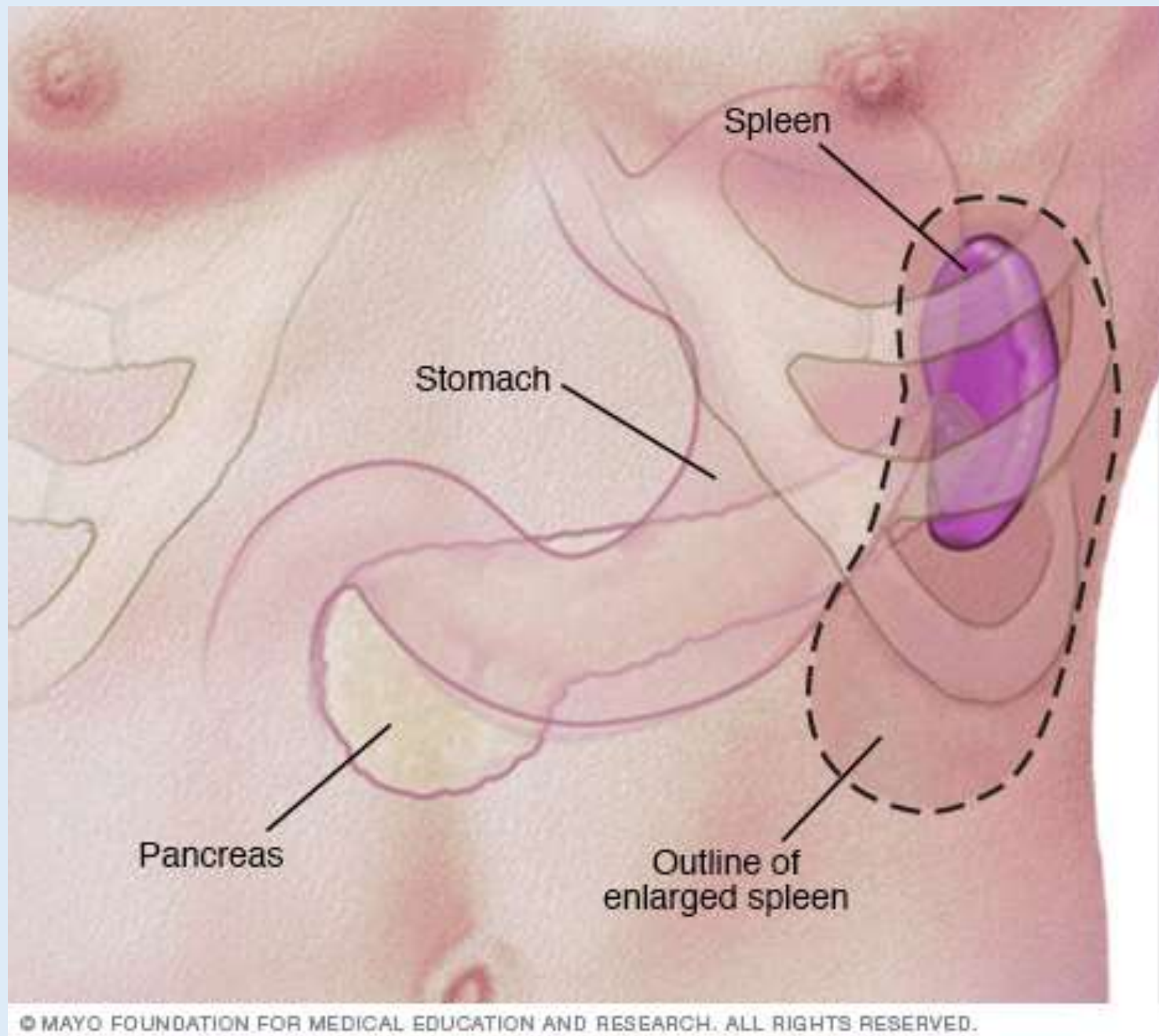
Nyitott hasüreg felső része

Sp: lien

L: hepar

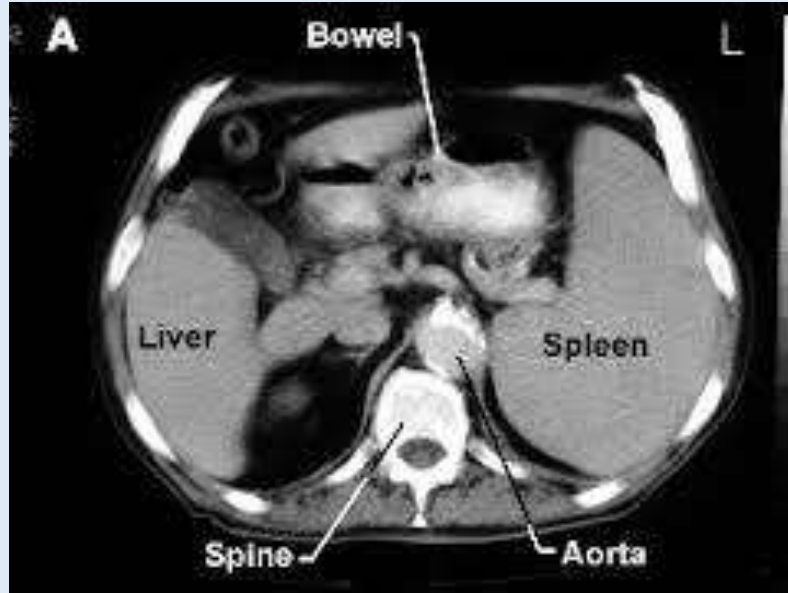
St: ventriculus

Pa: pancreas



Lép felszíni vetülete

(lép megnagyobbodás)



<https://crimsonbowng.files.wordpress.com/2016/06/images.jpg?w=497&h=372>



Köszönöm a figyelmet