

# Leber, Gallenblase, Pankreas, Milz

# Form, Lage, Funktion

## Funktionen der Leber

zentrales Stoffwechselorgan

Gallenfarbstoff

Sauerstoffbedarf

MPS

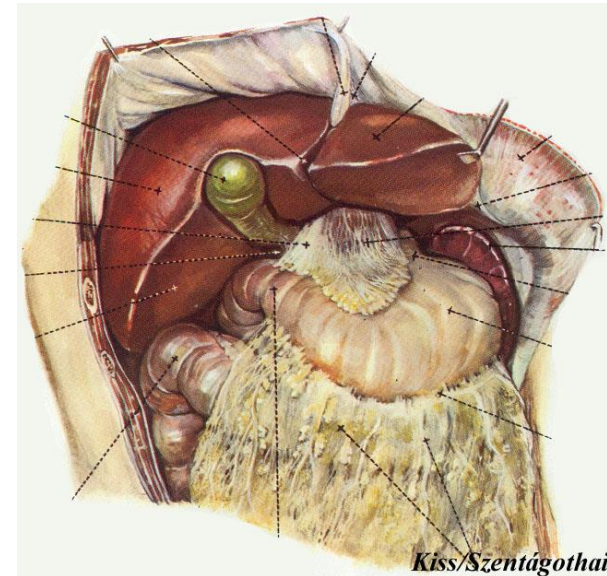
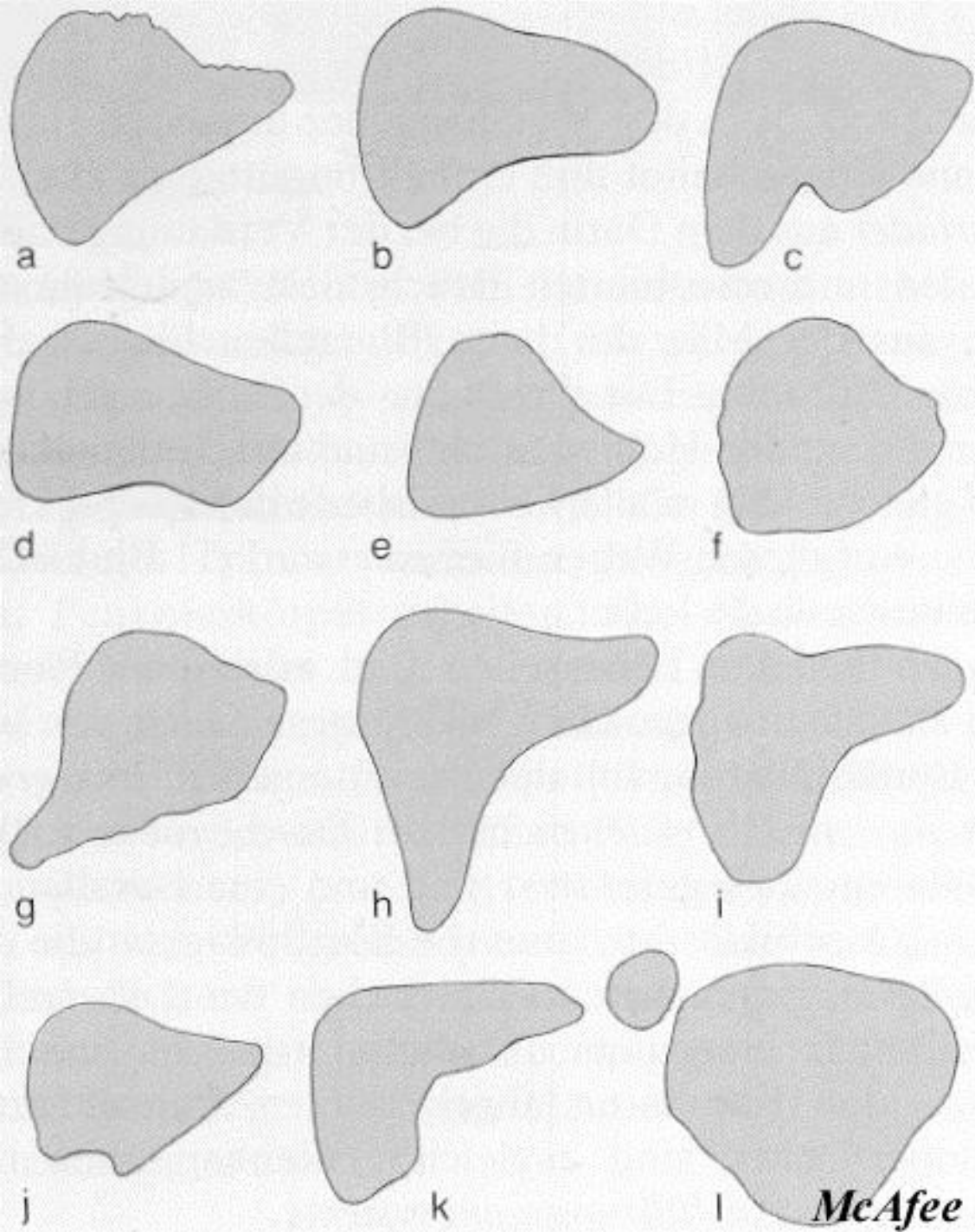
Fetalzeit

## Gestalt und Lage

Gewicht

Befestigung – Gefäßzügel

Leberbett – elastisch, verformbar



# Zwerchfellfläche (Facies diaphragmatica)

**Pars dextra**

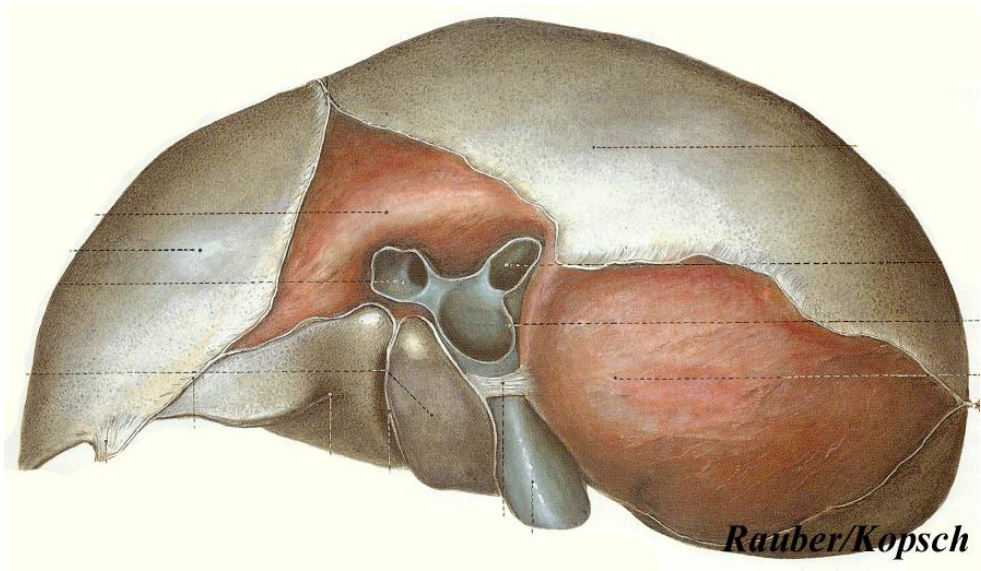
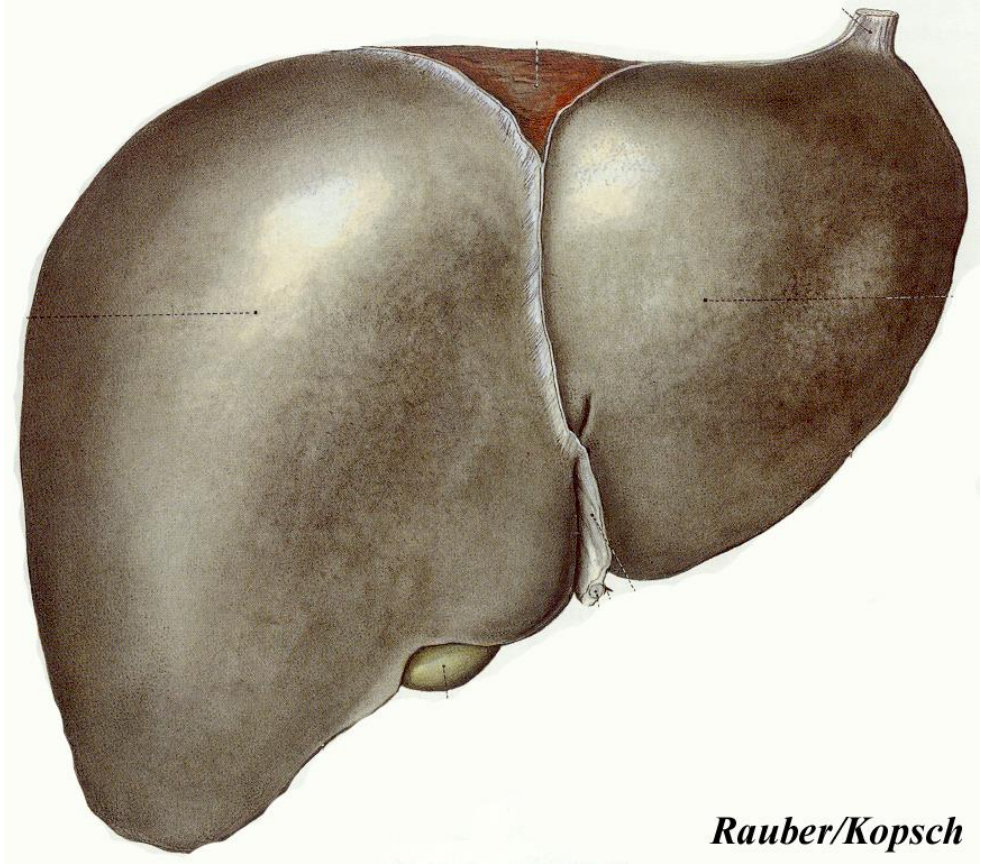
**Pars anterior**

- Lig. falciforme
- Zwerchfellfurchen

**Pars superior**

- Ligg. coronaria et triangularia
- Area nuda
- Recessus subphrenici

**Pars posterior**



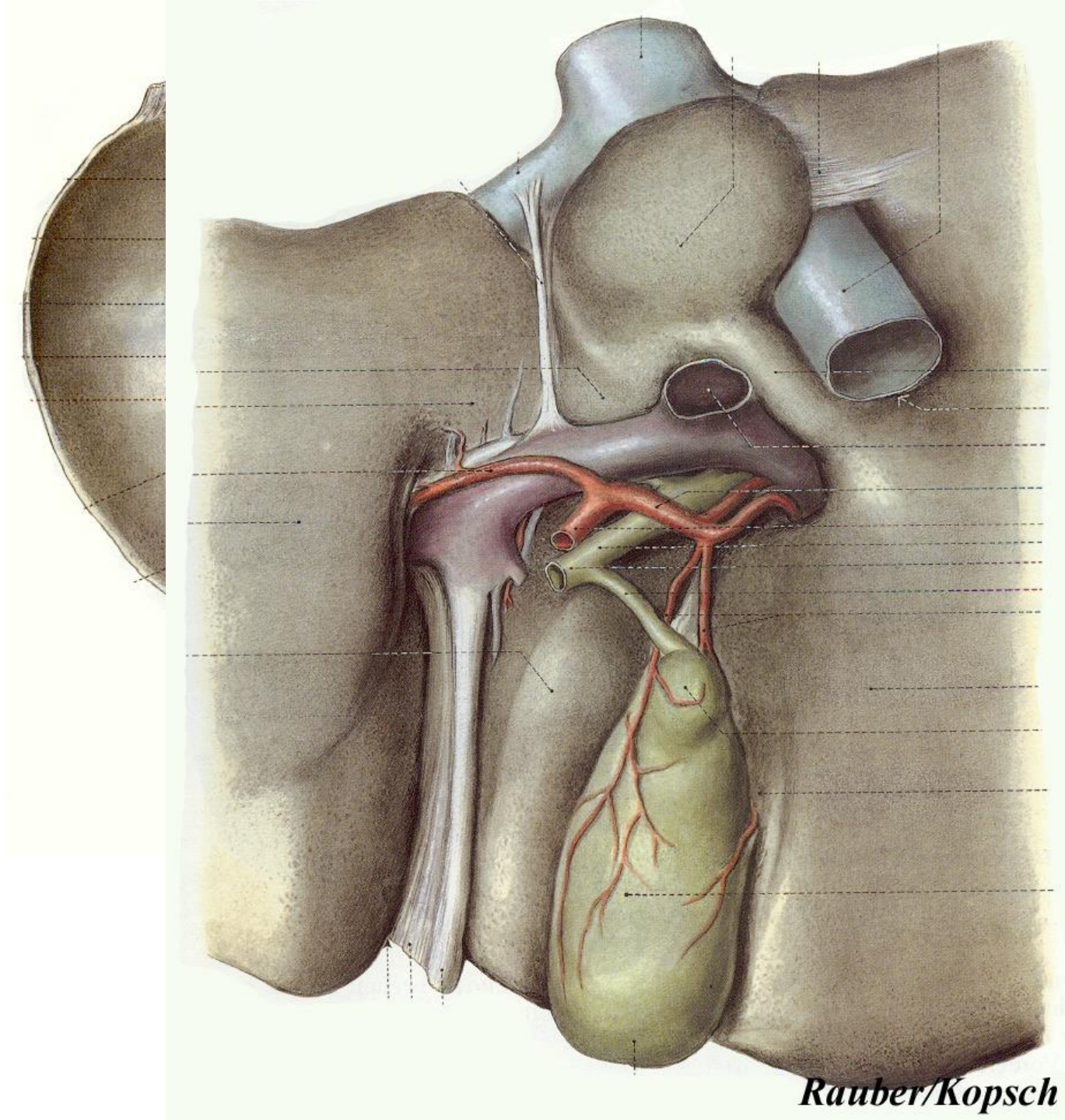
# Eingeweidefläche (Facies visceralis)

Die Leberpforte

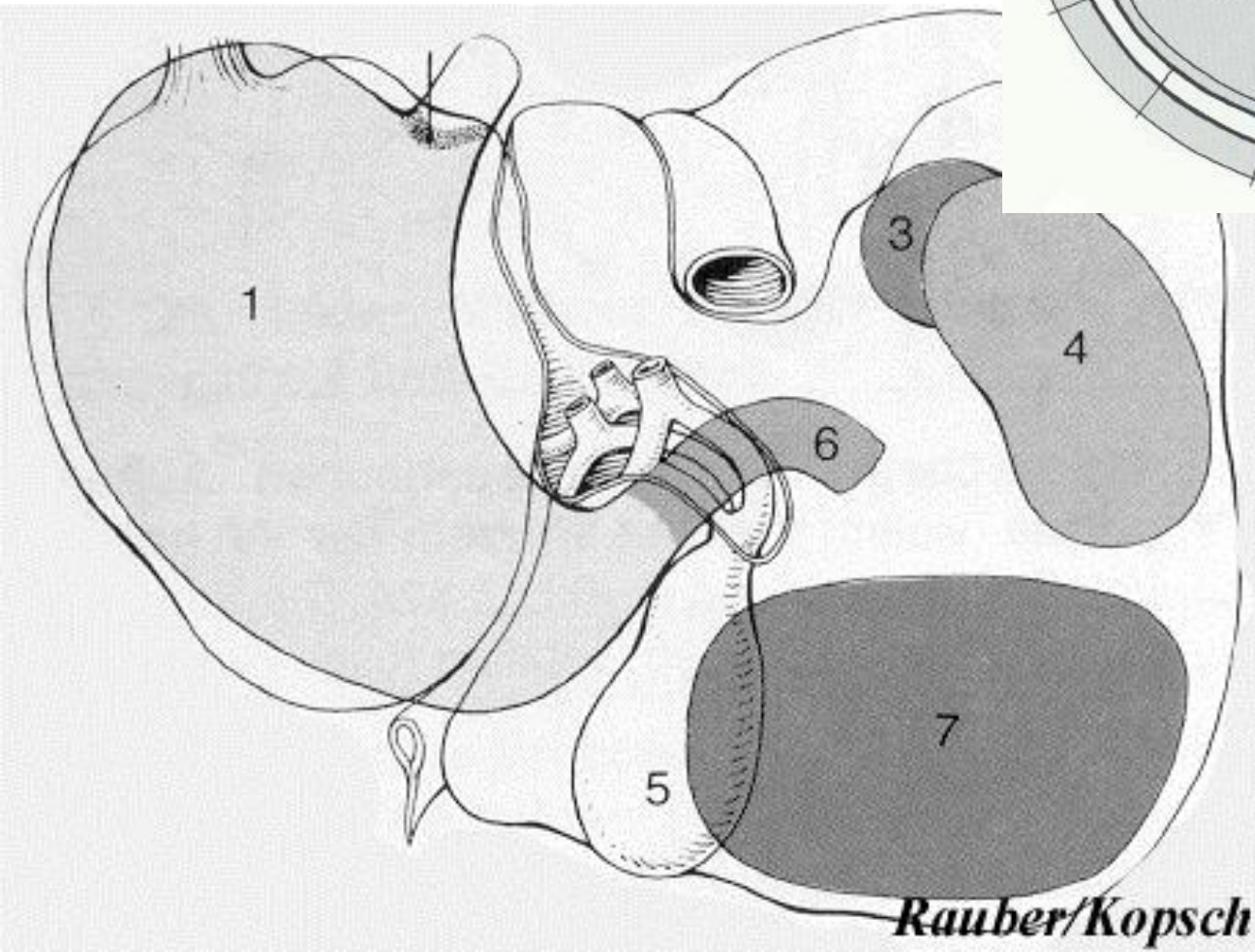
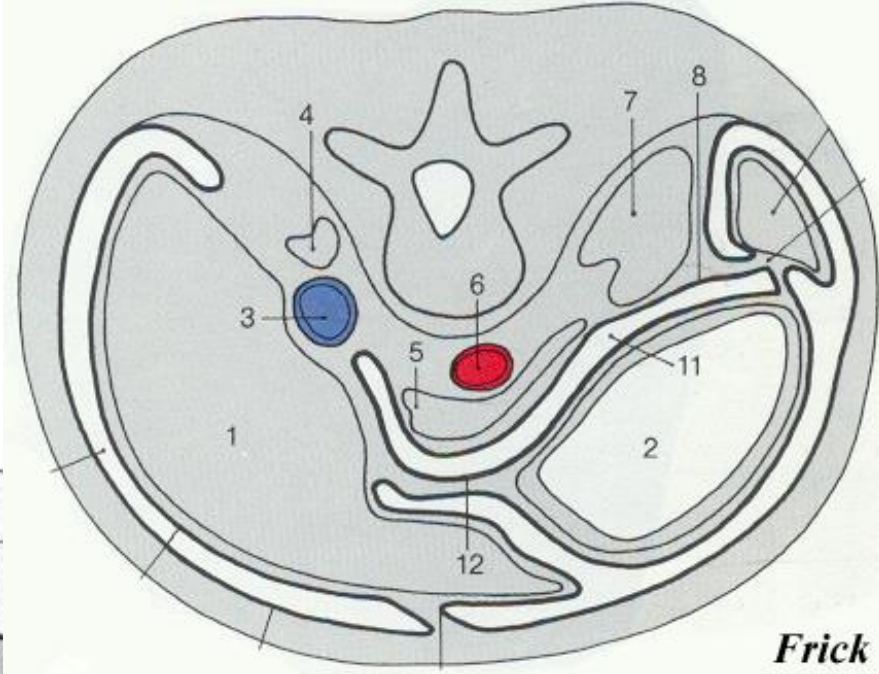
-Pfortader

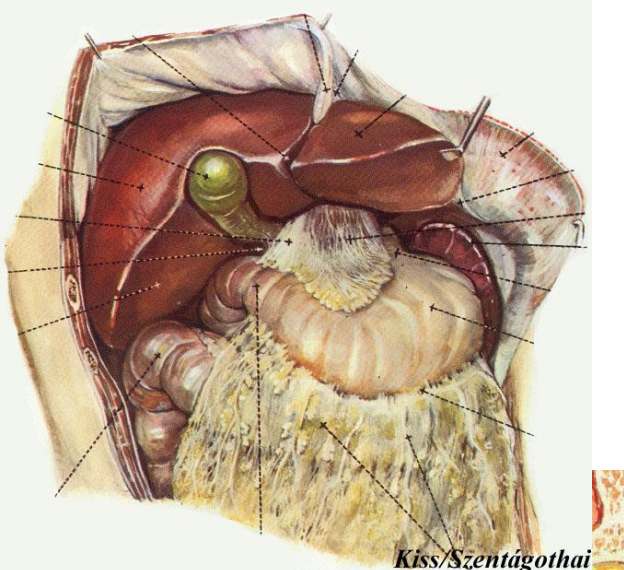
-Leberarterie

-Gallengang

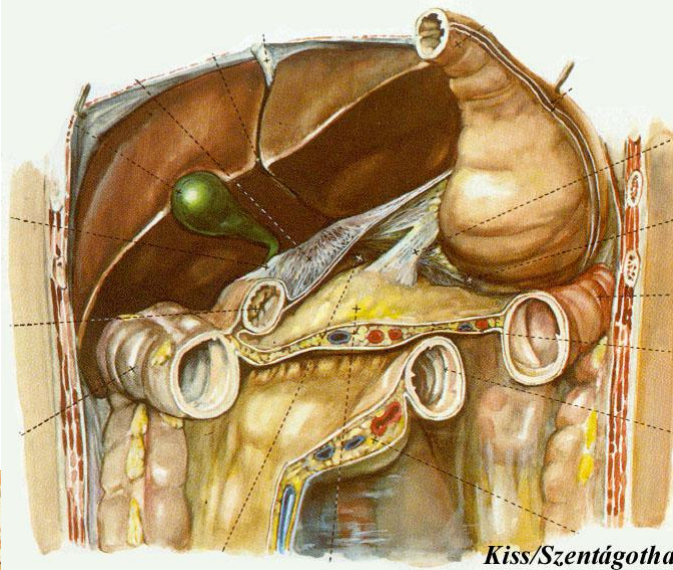


# Berührungsfelder der Facies visceralis

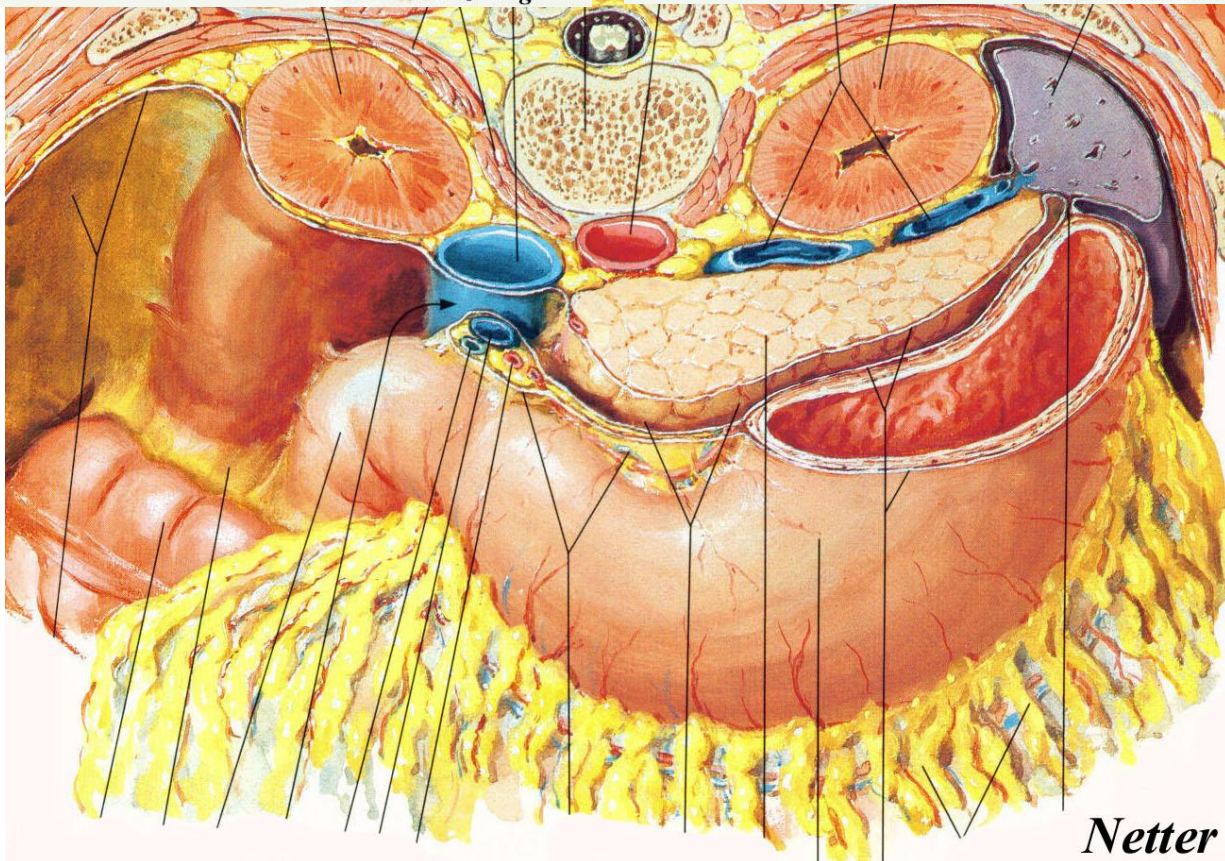




*Kiss/Szentágothai*



*Kiss/Szentágothai*



*Netter*

## **Bursa omentalis**

- Wände**
- kleines Netz, Magen**
- Leber**
- Mesocolon transversum**
- Pankreas**

# Bursa omentalis, Eingang - Foramen epiploicum

**Foramen epiploicum**

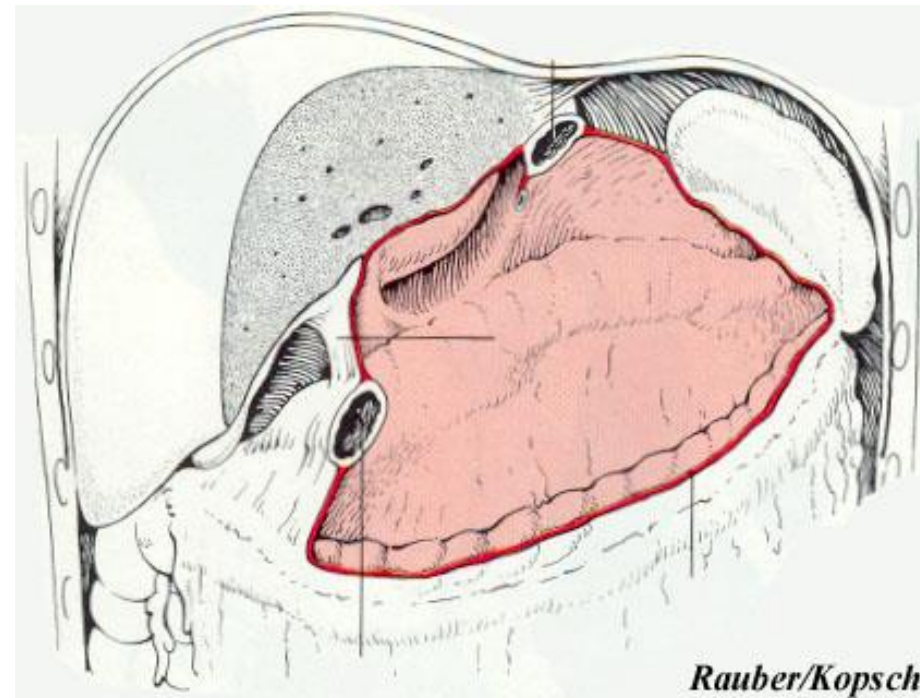
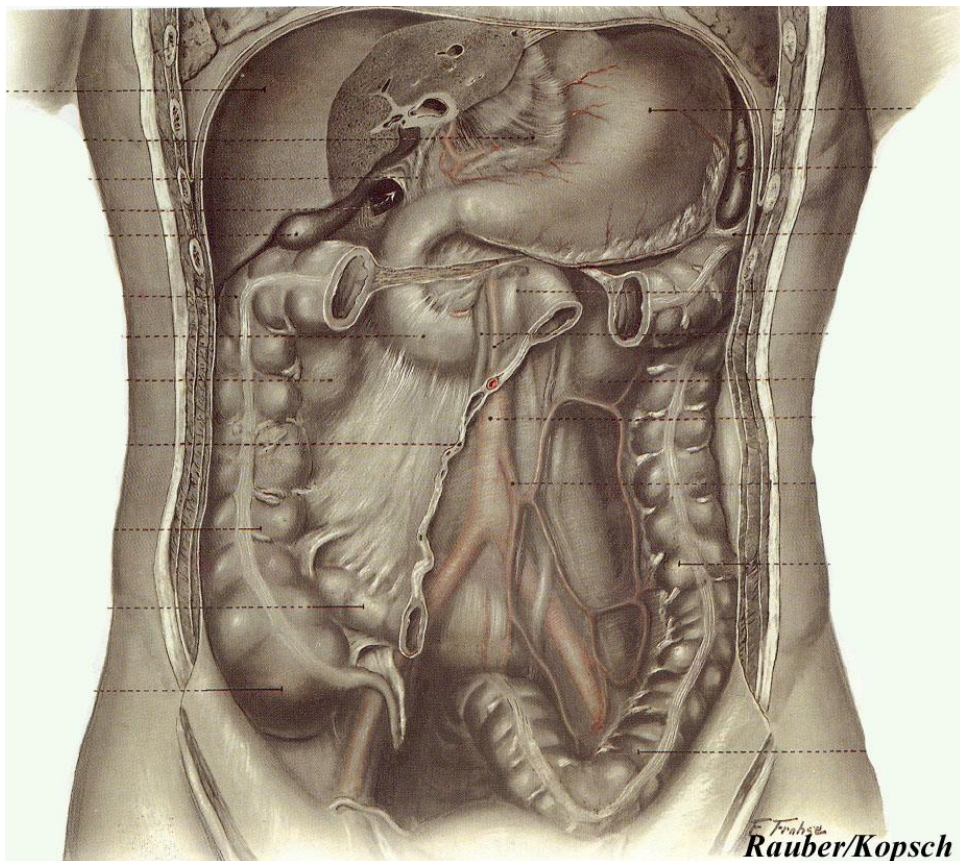
**Lig. hepatoduodenale**

**Duodenum (pars sup.)**

**Leber (lobus caudatus)**

**Lig. hepatorenale**

**Lig. duodenorenale**



# Das portale Lebersegment

Im Zentrum

Pfortader

Leberarterie

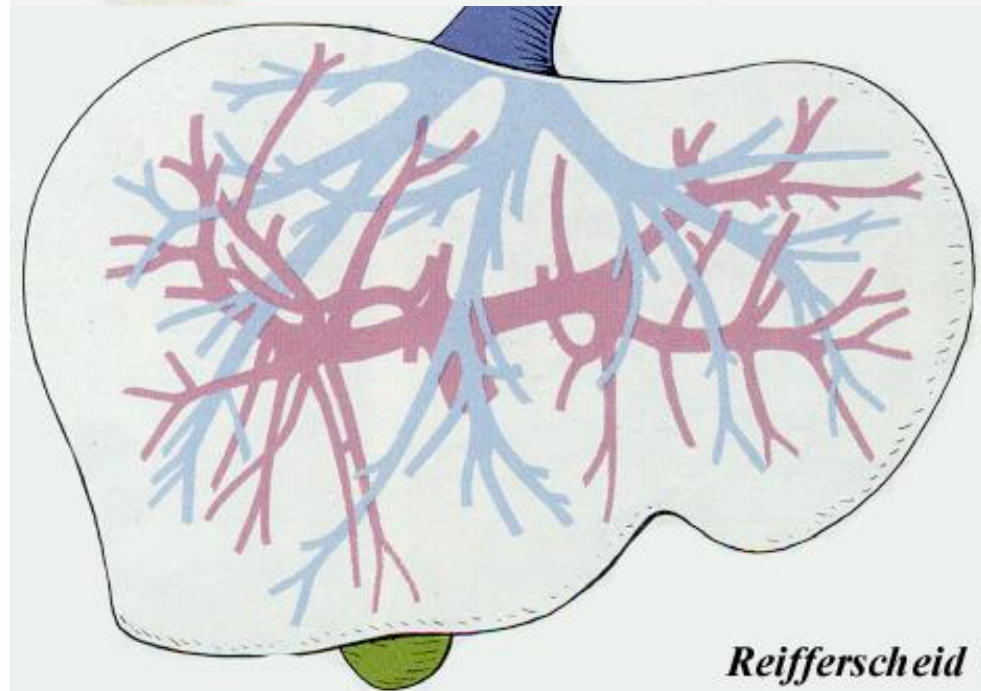
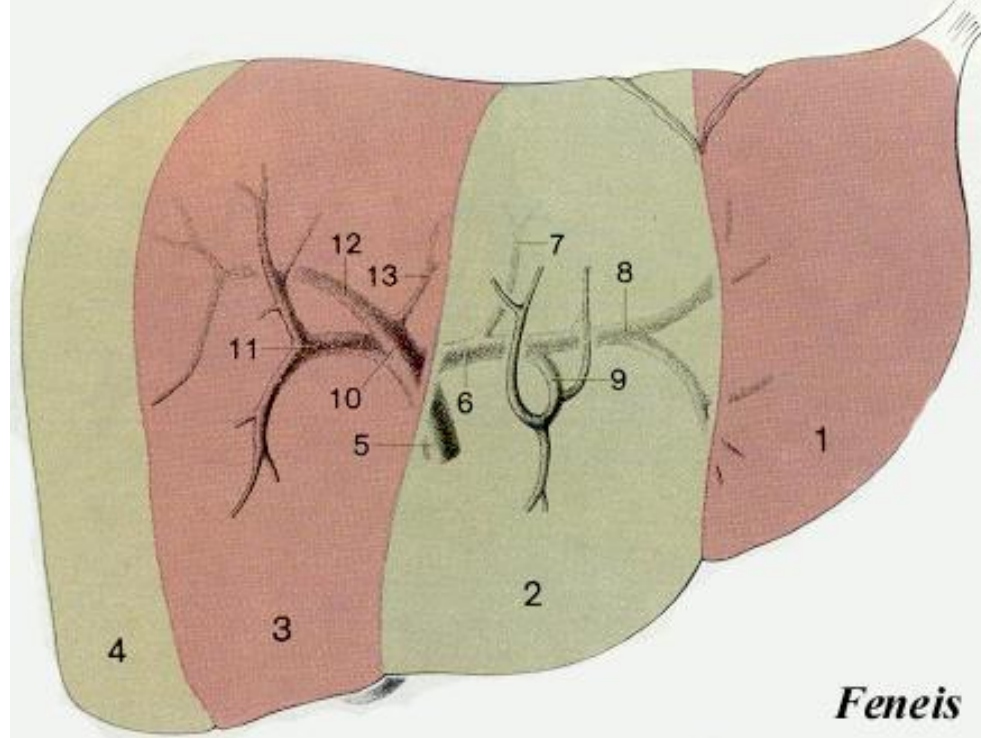
Gallengang

Segmente und Subsegmente

## Hepatovenöse Segmente

Einzugsgebiete der Lebervenen

-linkes, mittleres, rechtes,  
parakavales, kaudales Segment





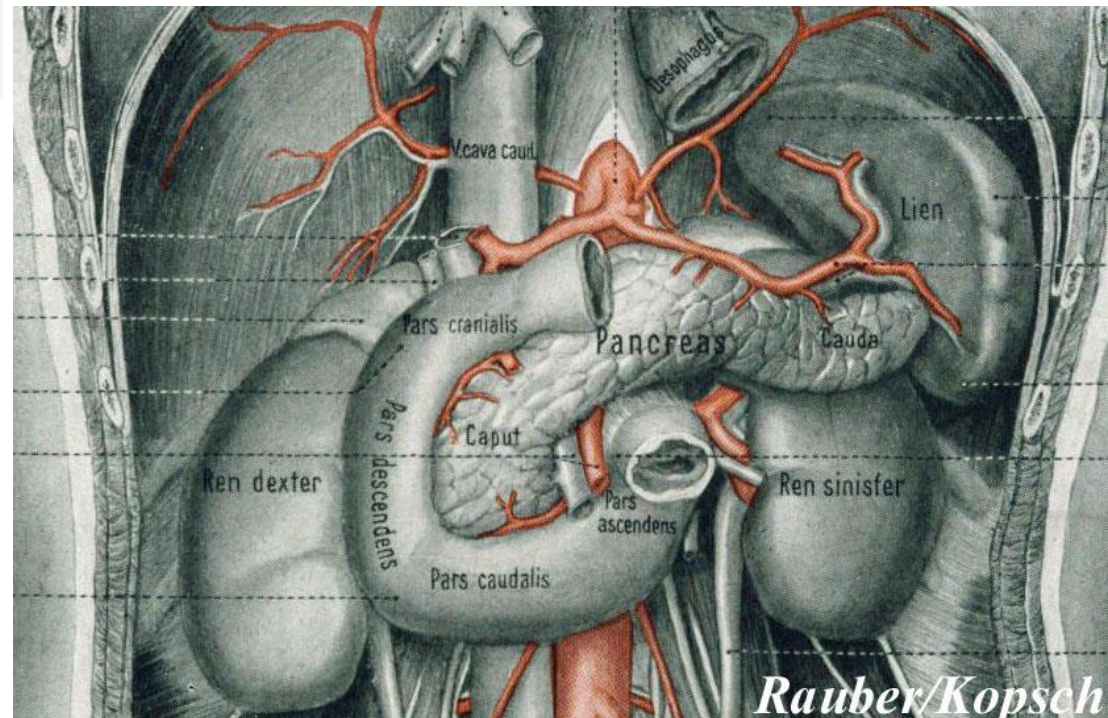
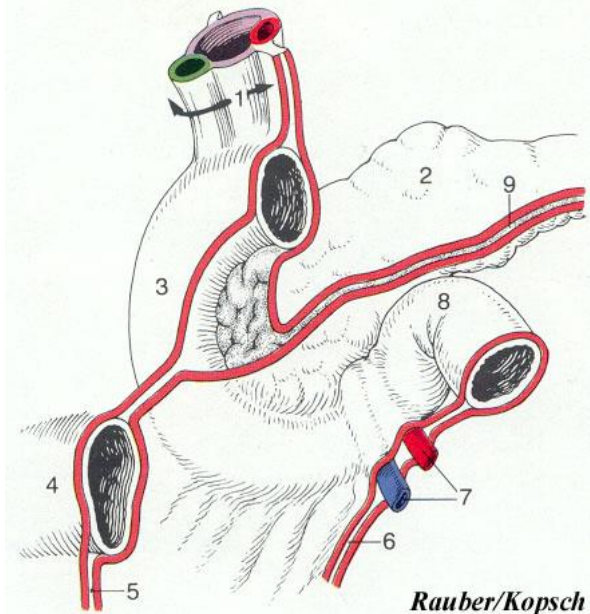
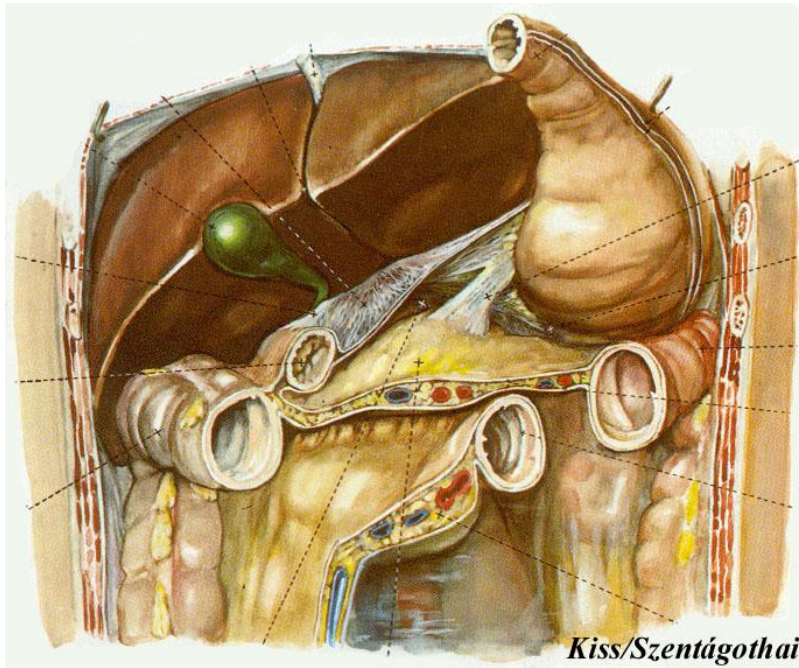
# Pankreas

## Topographie und Syntopie

retroperitoneal (sekundär)

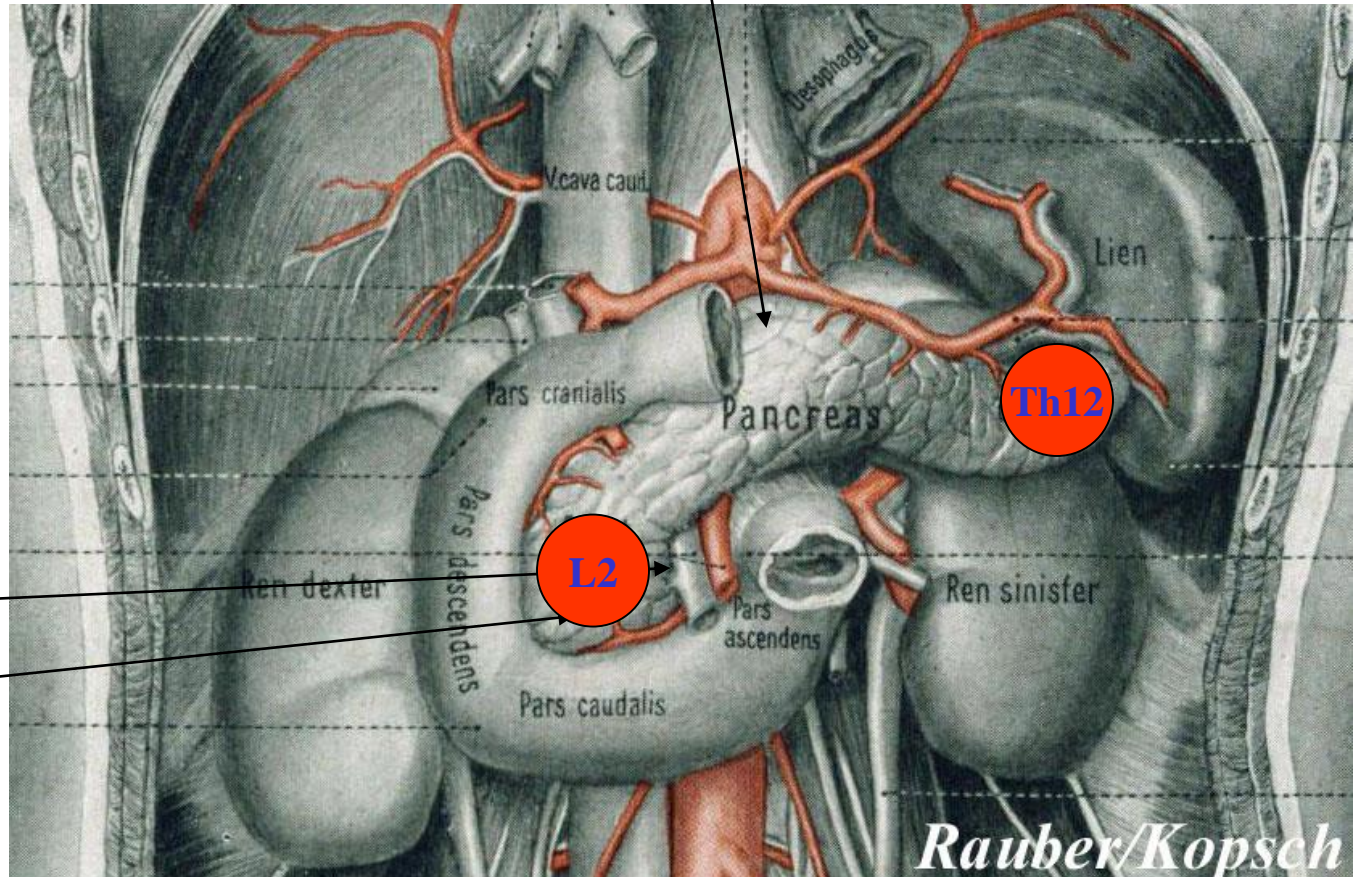
Caput, Corpus, Cauda

Facies anterior, inferior et posterior



# Pankreas

Tuber omentale



Th12

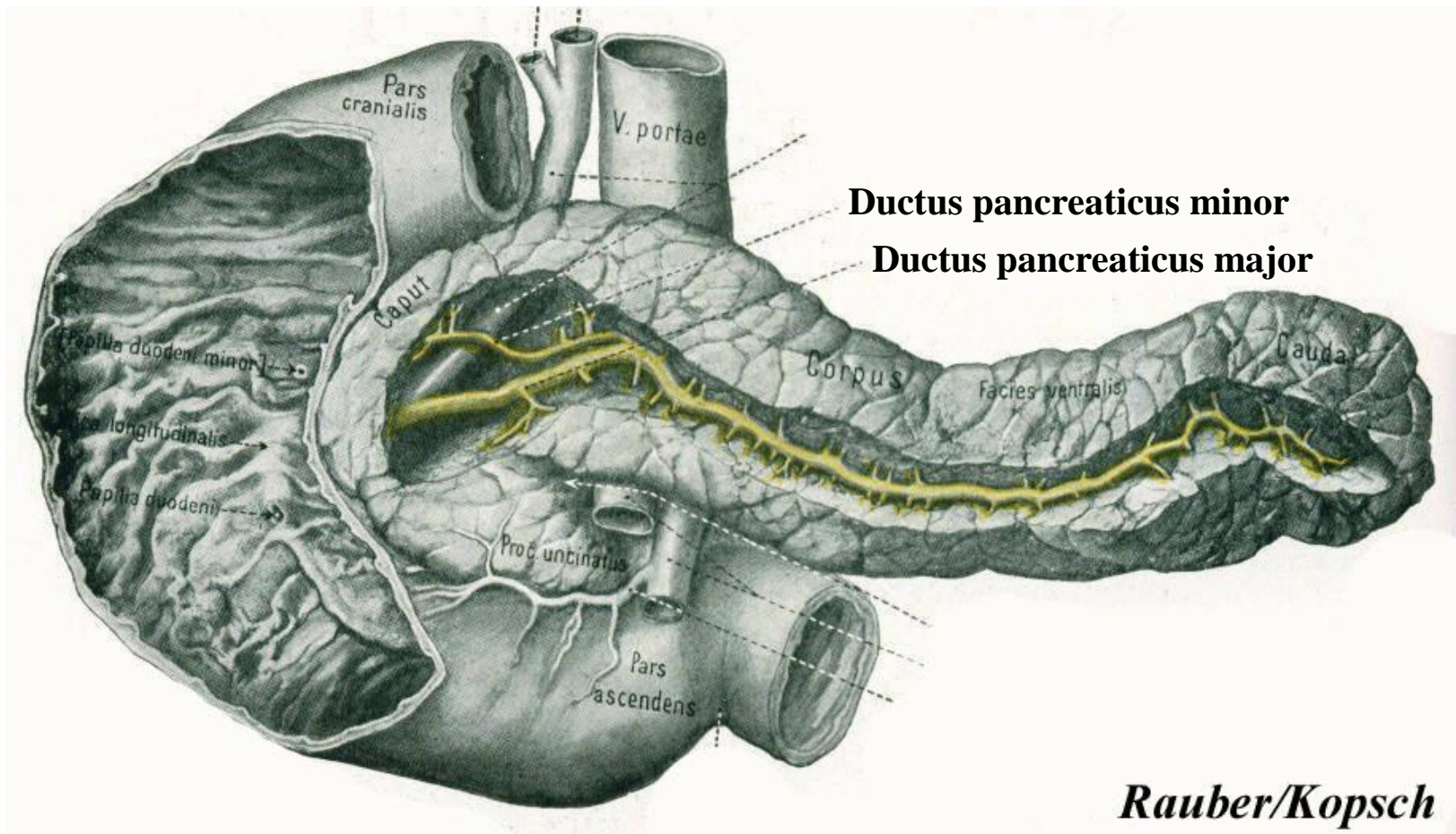
L2

Incisura pancreatis

Processus uncinatus

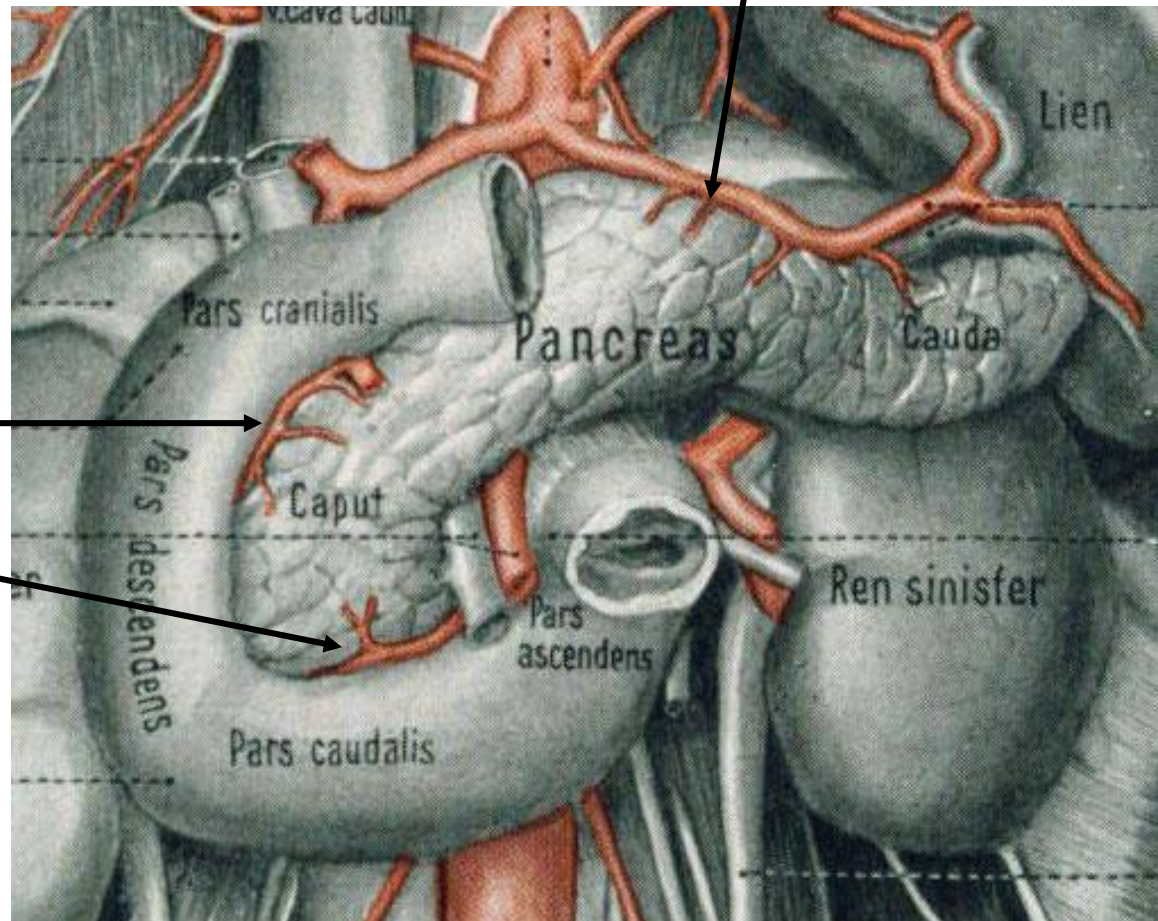
*Rauber/Kopsch*

# Pankreas - die grossen Ausführungsgänge



# Blutversorgung von Duodenum und Pankreas

Rr. pancreatici (*ex A. lienalis*)

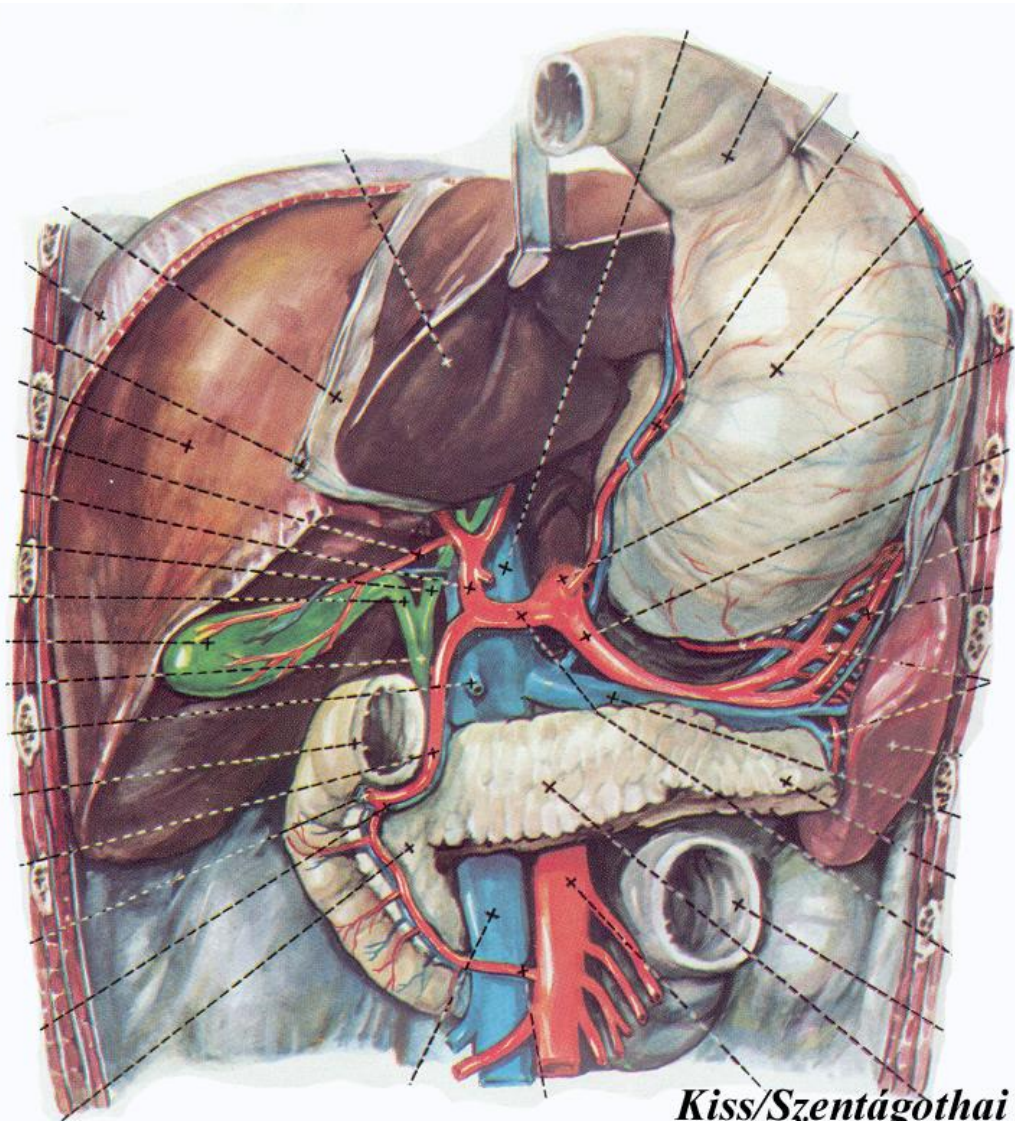


Aa. pancreaticoduodenales sup.  
(*ex truncus coeliacus*)

Aa. pancreaticoduodenales inf.  
(*ex A. mesenterica sup.*)

# Die Pfortader. Portocavale Anastomosen

**V. portae**



**V. cava inferior**

