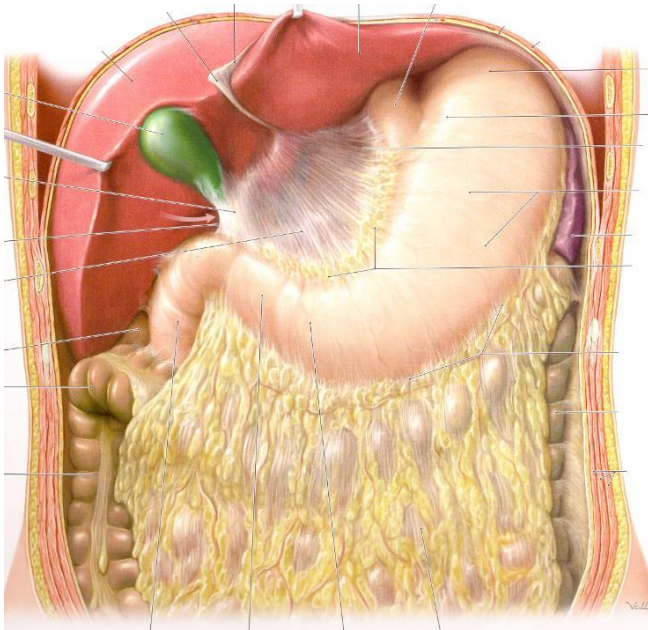
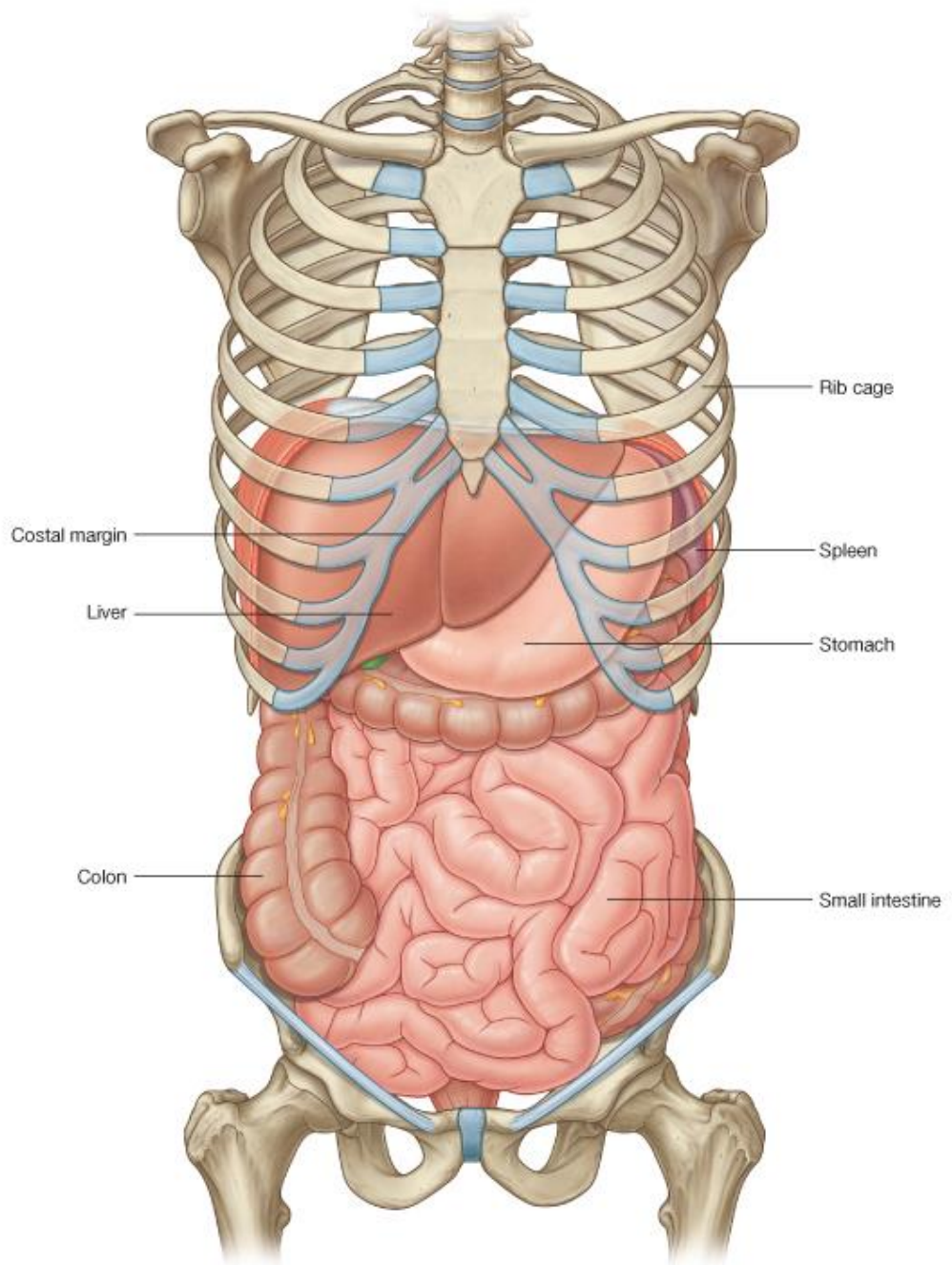


# Hashártya, recessusok. A hasi szervek peritonealis viszonyai.



**dr. Hanics János**



Rib cage

Costal margin

Spleen

Liver

Stomach

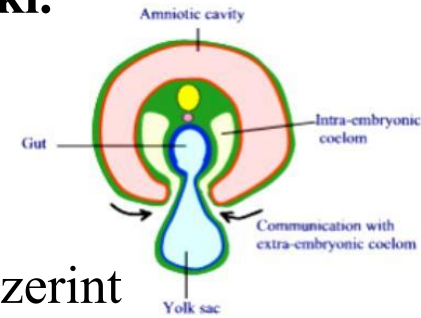
Colon

Small intestine

**A hashártya (peritoneum) testünk legnagyobb savós hártyája, amely mesodermális származék, az oldallemezből alakult ki.**

Két lemezét különíthetjük el:

- 1. peritoneum parietale**
- 2. peritoneum viscerale**

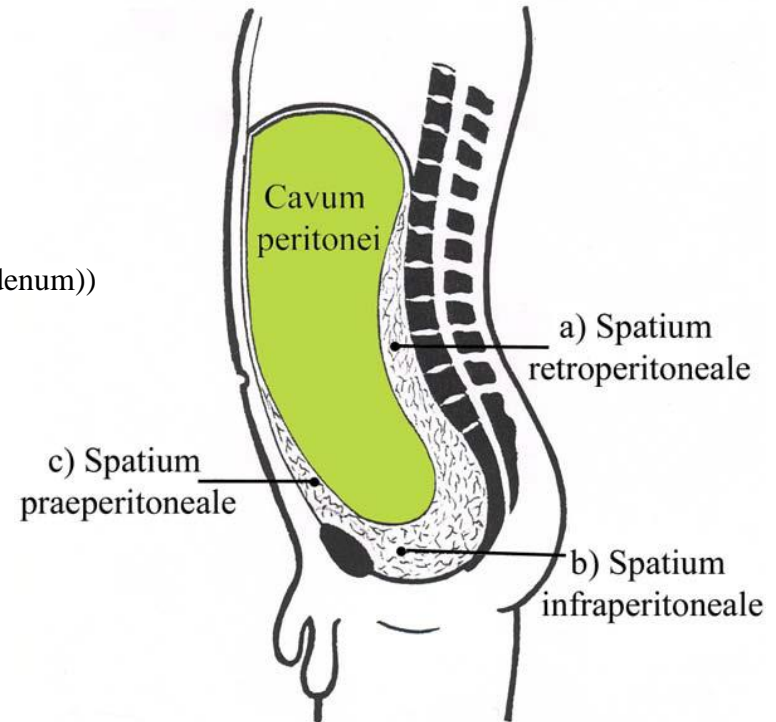
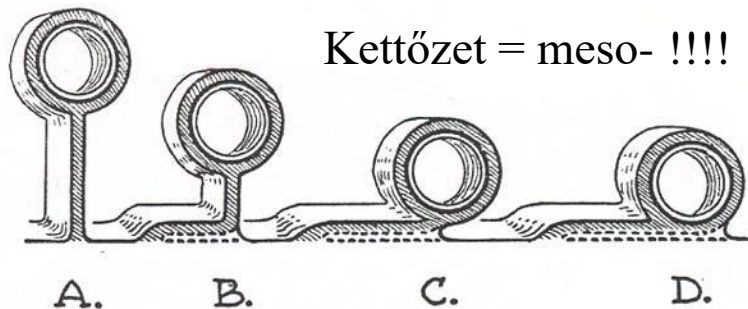


A hasüregi és medencei szervek a hashártyához való viszonyuk szerint alapvetően kétfélék lehetnek:

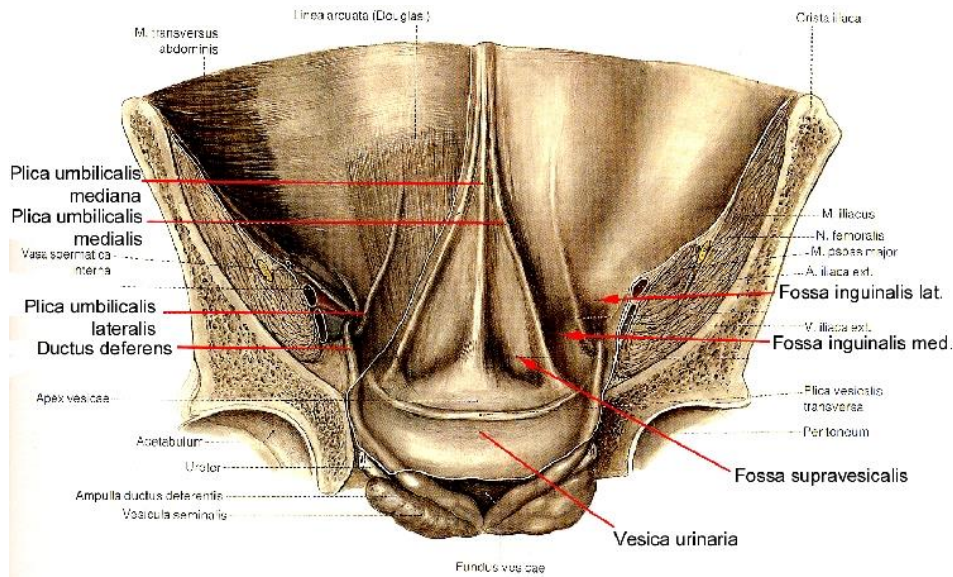
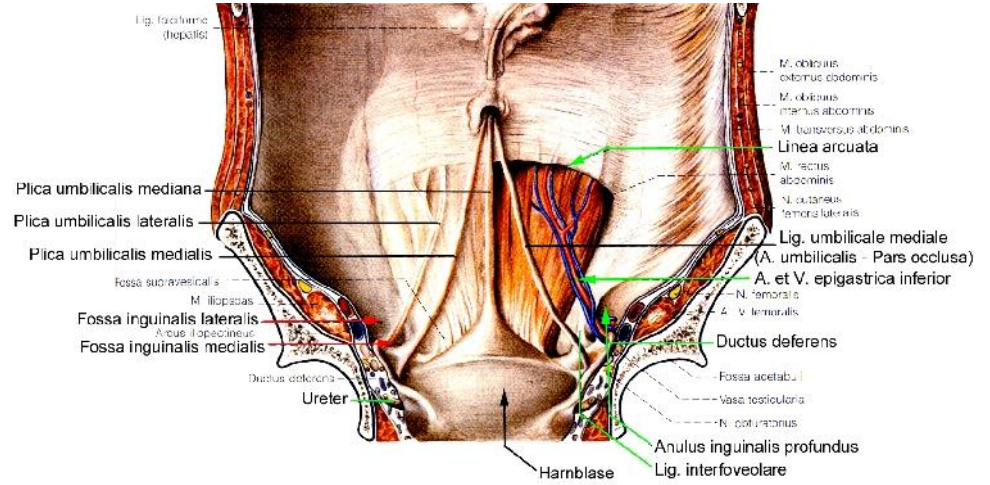
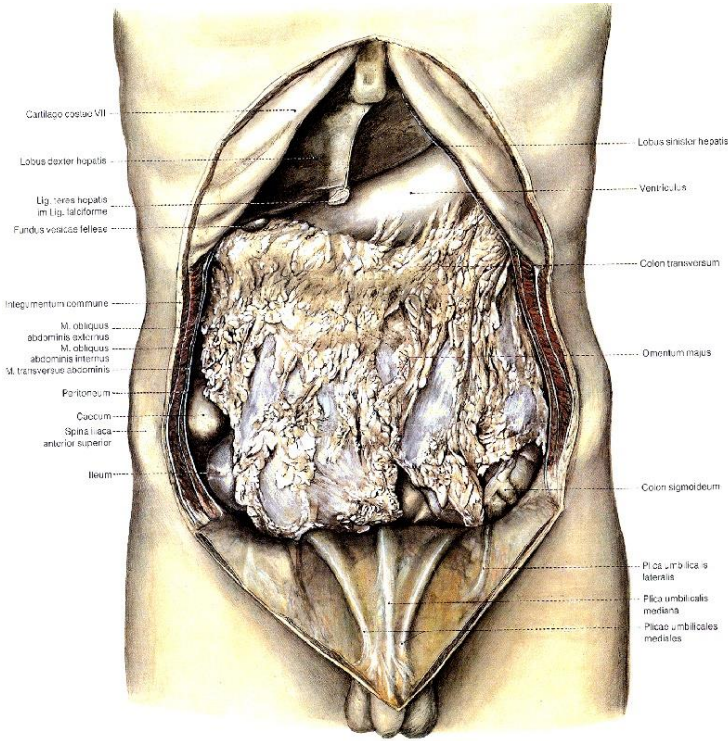
**Intraperitonealisak** - a peritoneum zsigeri lemeze által borítottak, melyekhez általában hashártyakettőzet húzódik

**Extraperitonealisak, ezen belül:**

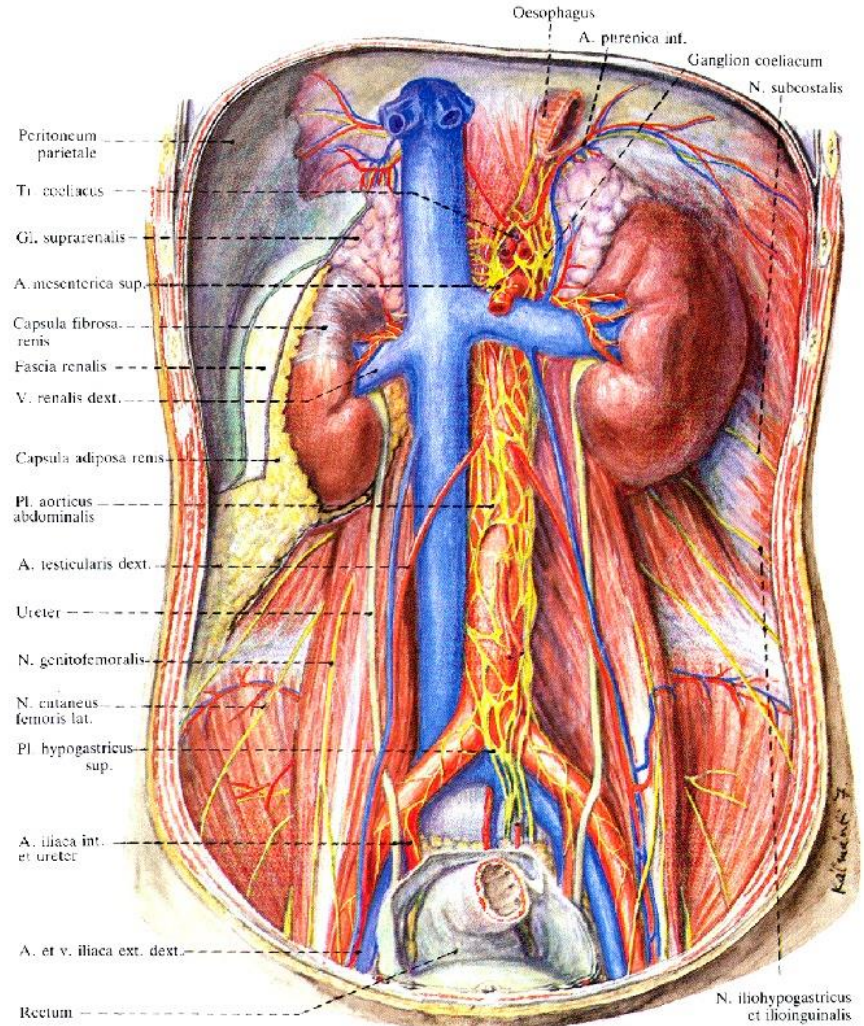
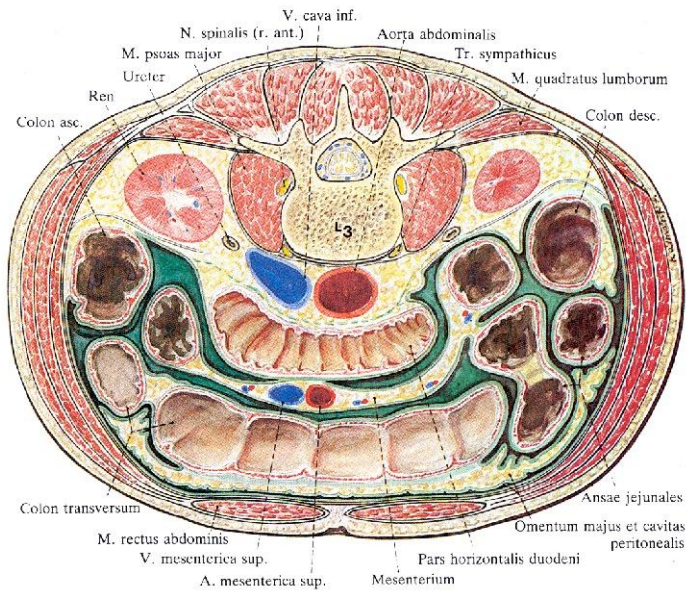
- Praeperitonealis
- Retroperitonealis
- (Secunder módon retroperitonealis (pancreas, duodenum))
- Infraperitonealis



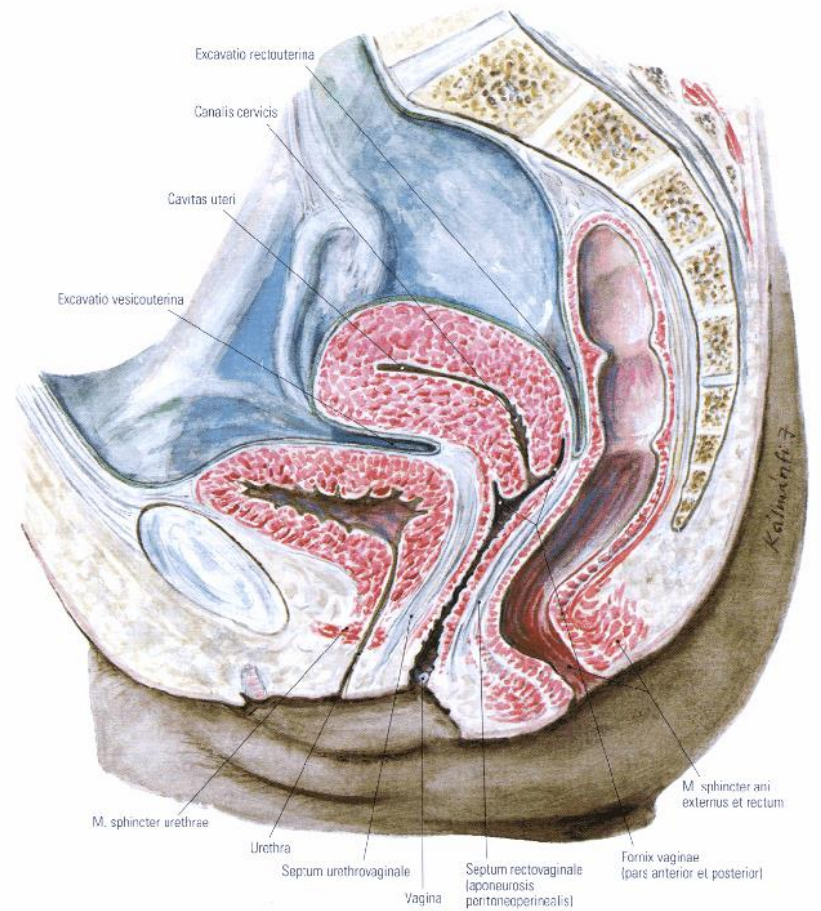
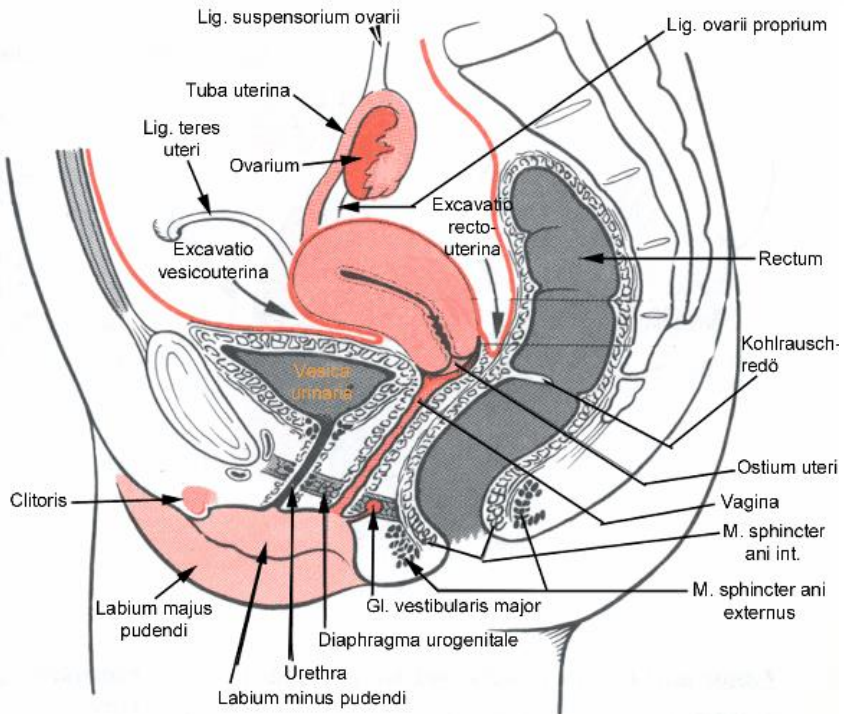
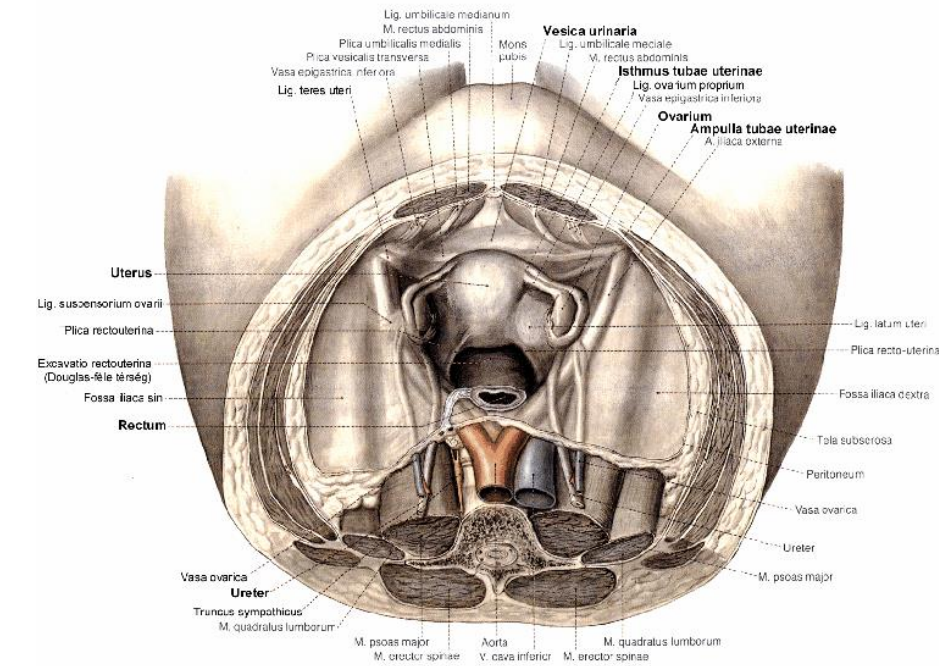
# Praeperitonealis



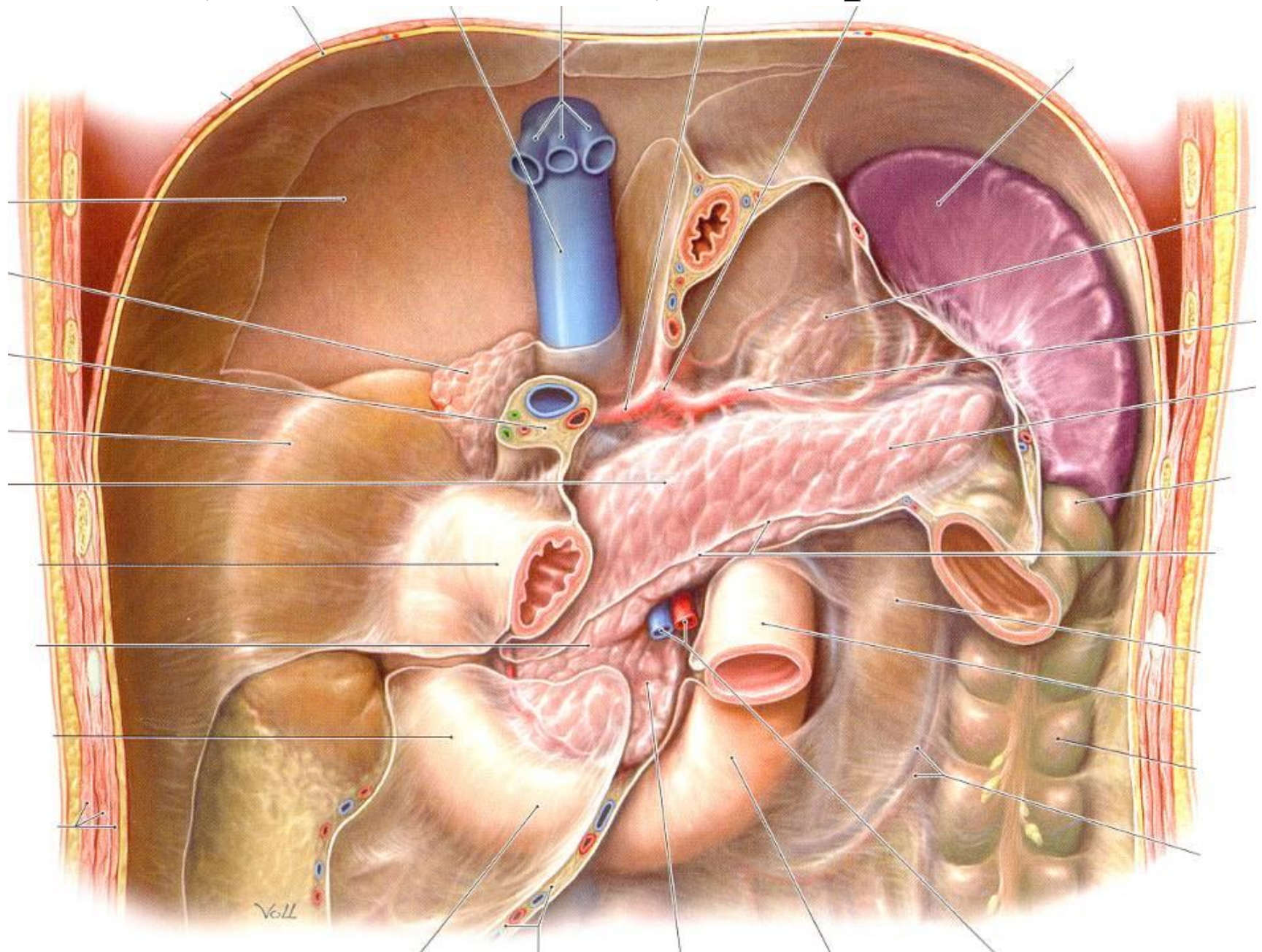
# Retroperitonealis



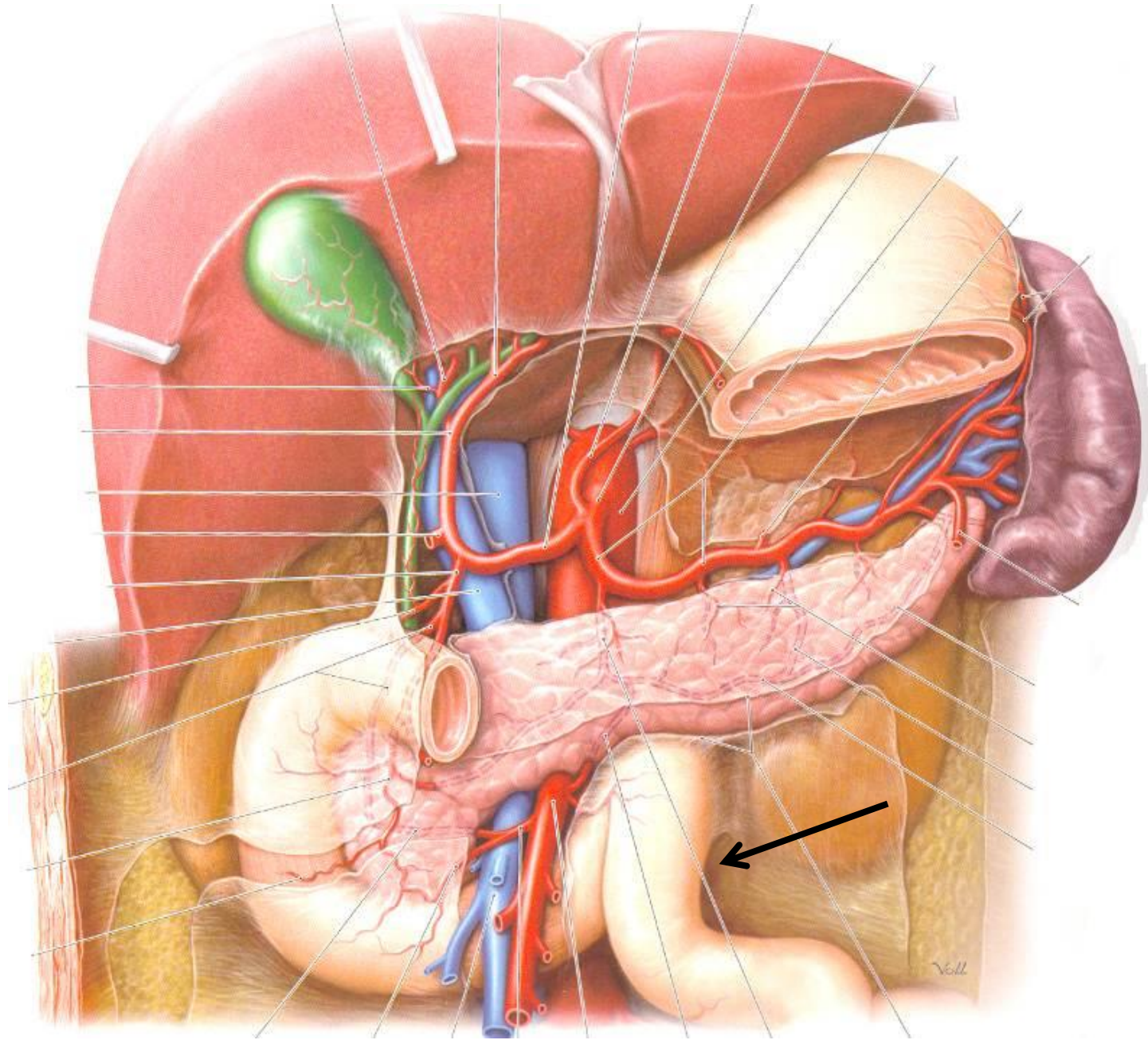
# Infraperitonealis



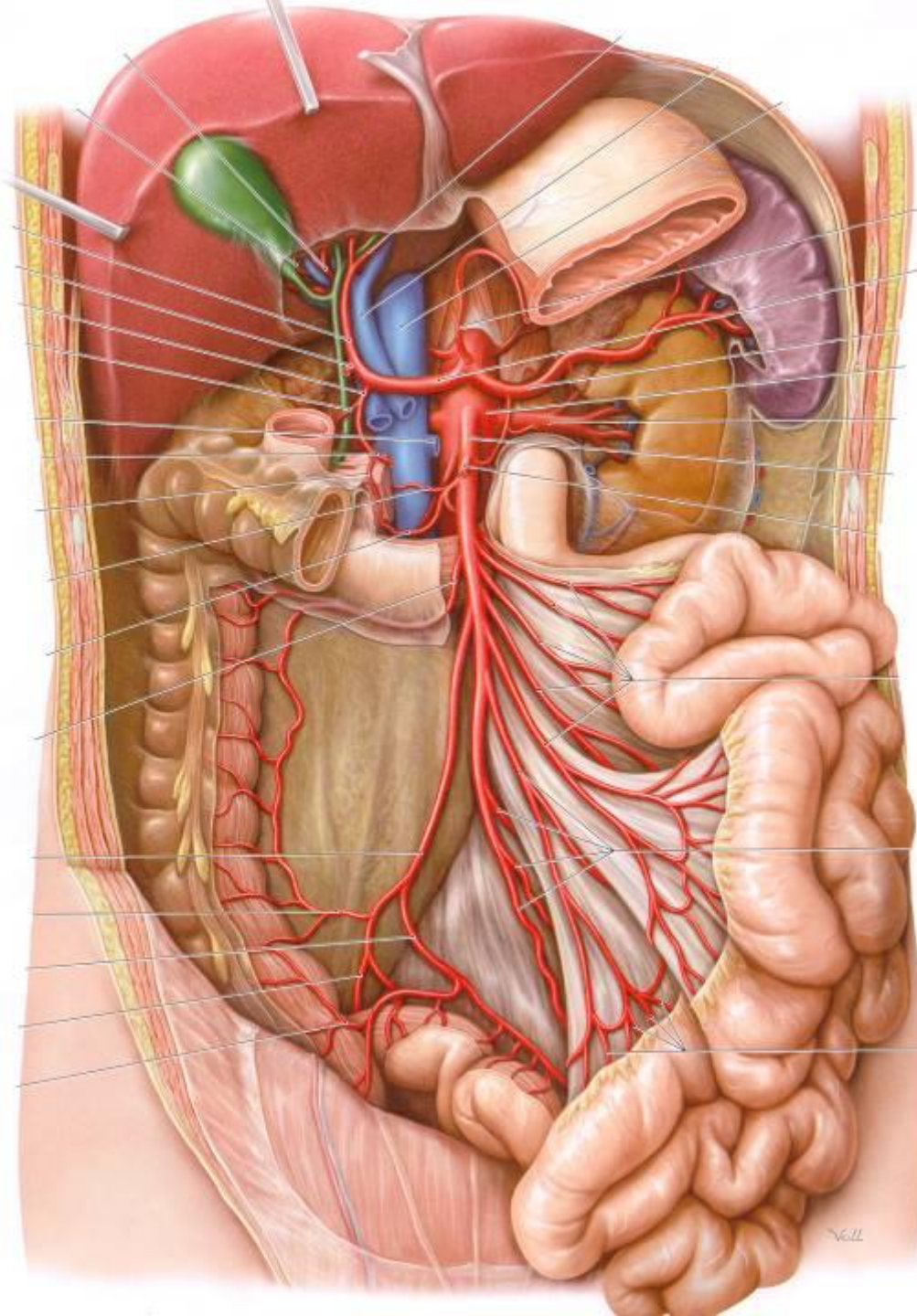
# (Secunder módon) Retroperitonealis

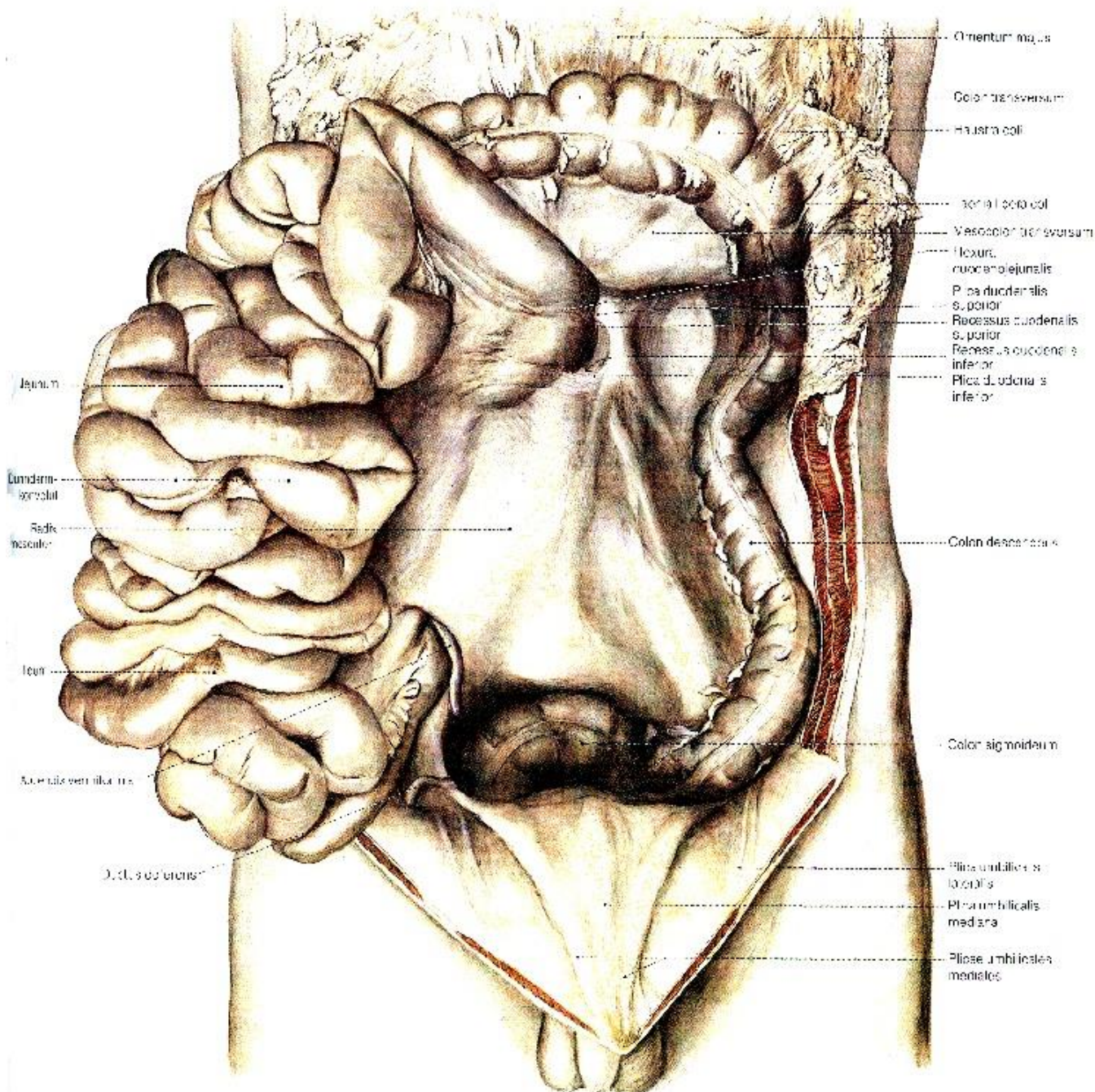


# Intraperitonealis





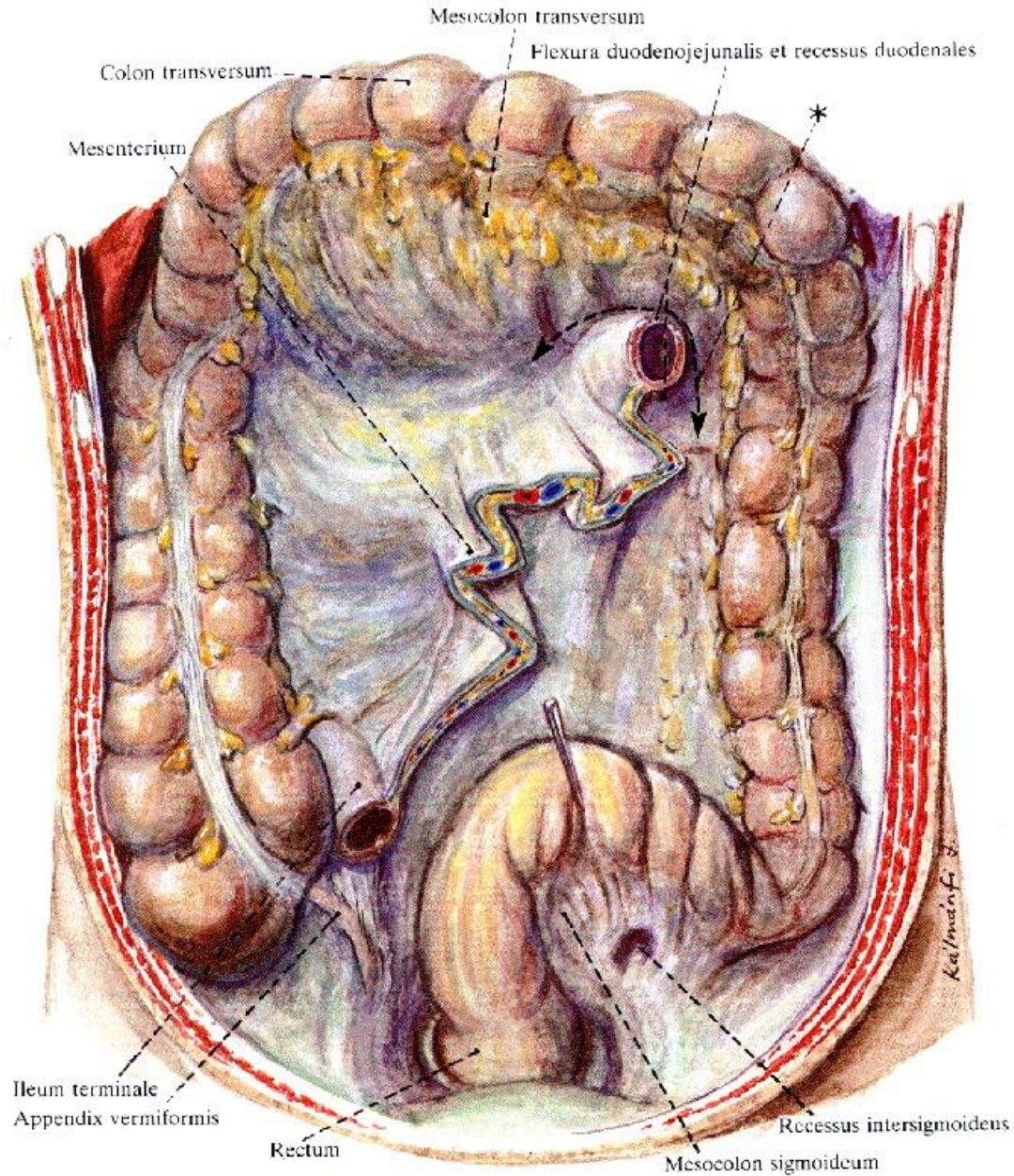


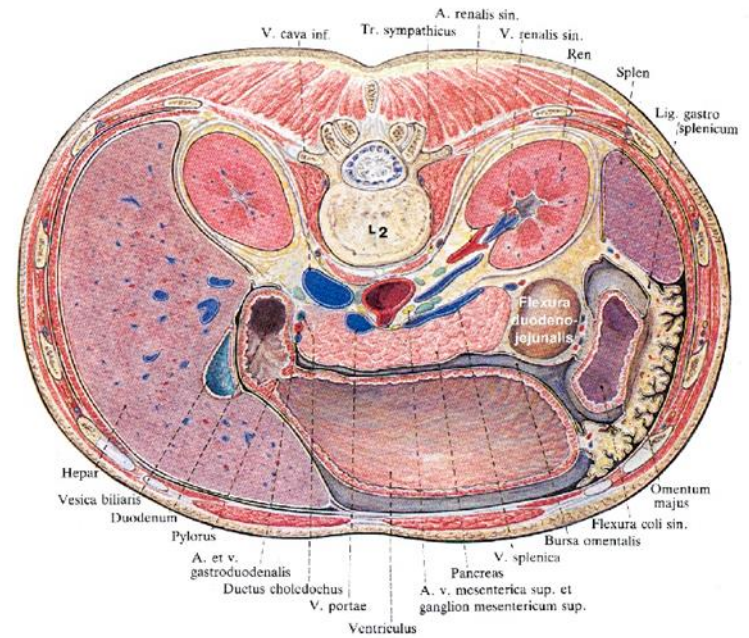
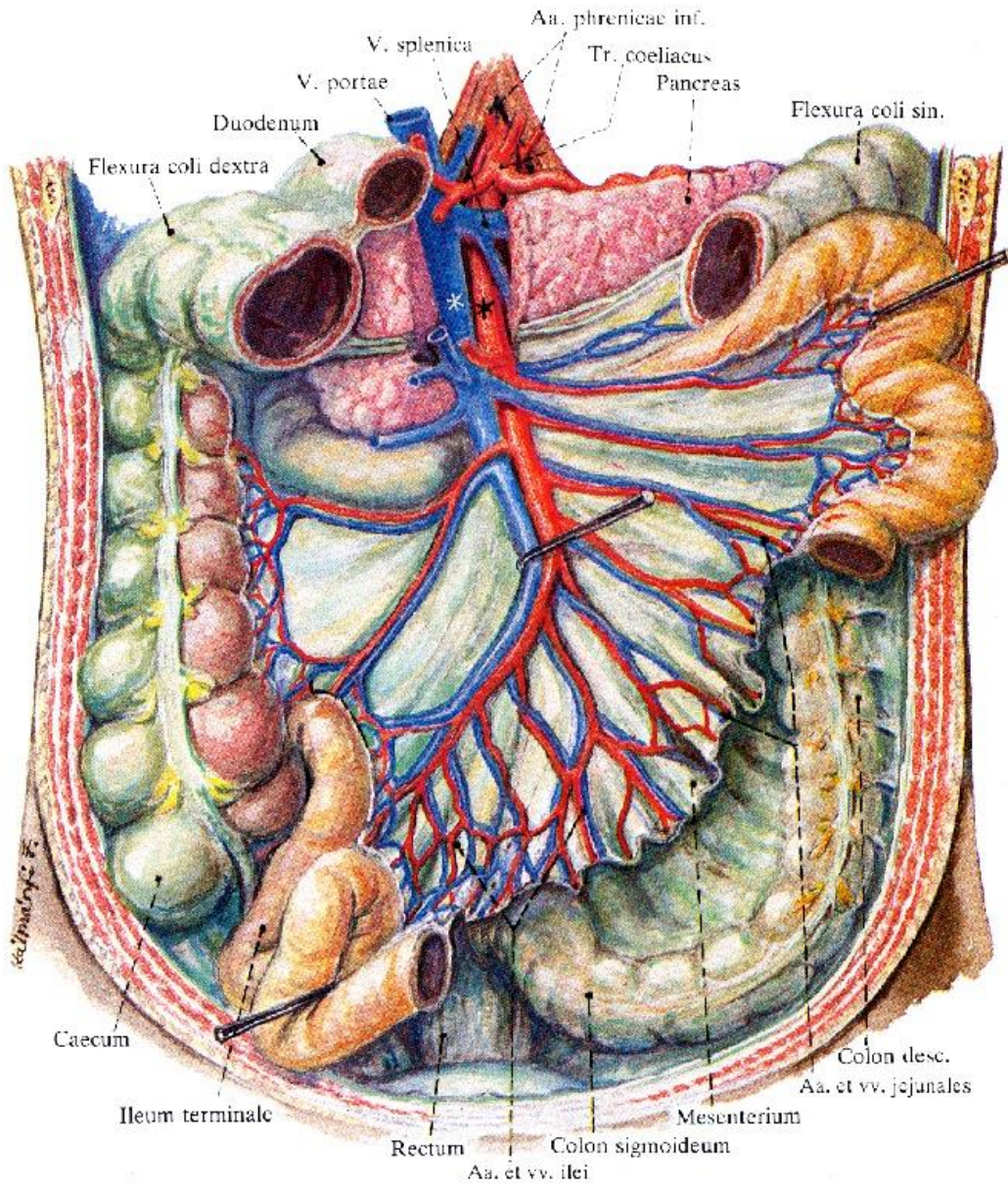


Omentum majus  
 Colon transversum  
 Hausta coli  
 Plicae coli  
 Vesicula transversum  
 Flexura duodenojejunalis  
 Pars duodenalis superior  
 Recessus duodenalis superior  
 Recessus duodenalis inferior  
 Plicae duodenales inferiores  
 Colon descendens  
 Colon sigmoideum  
 Plicae umbilicales laterales  
 Plicae umbilicales mediae  
 Plicae umbilicales mediales

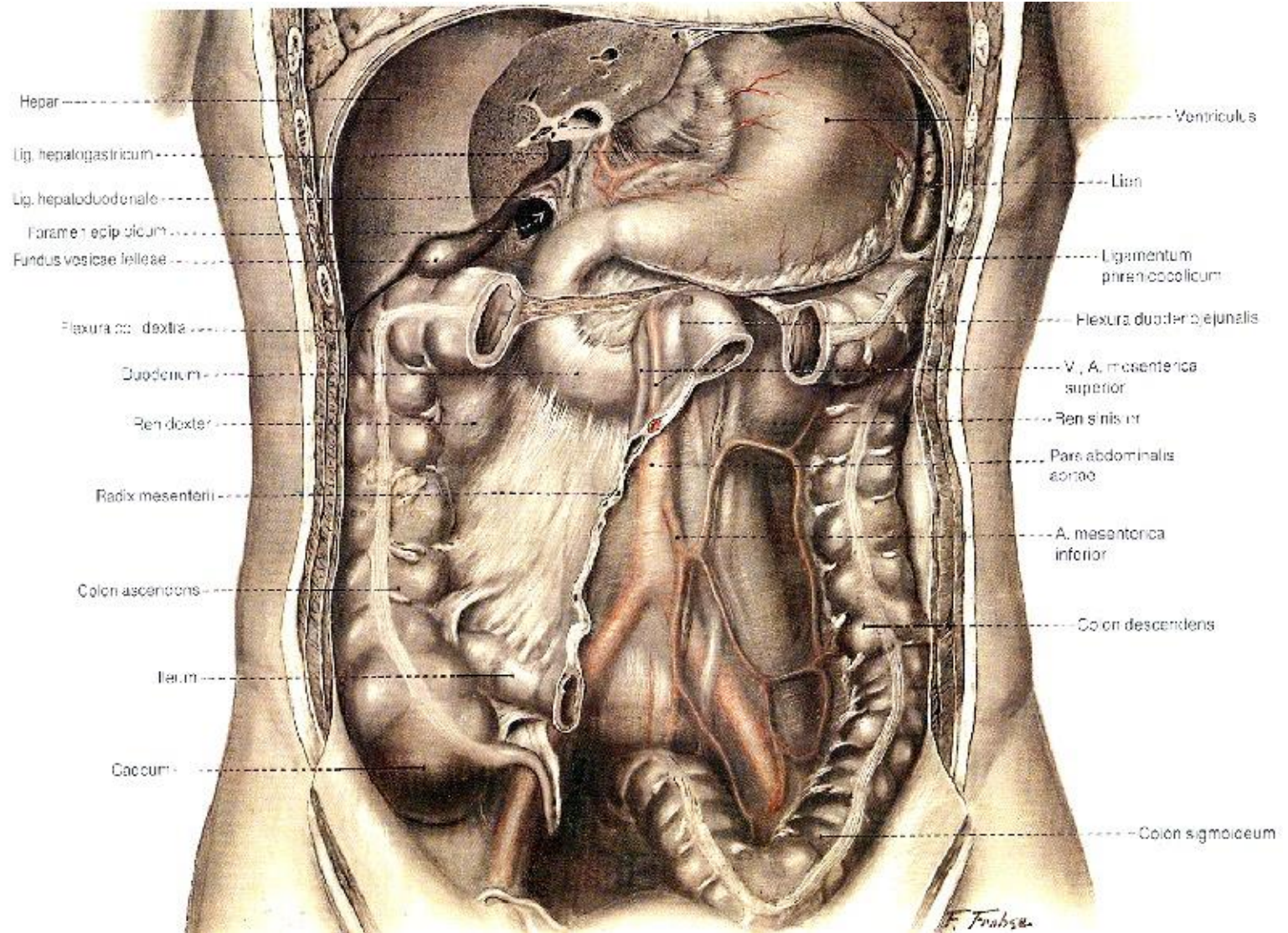
Jejunum  
 Duodenum superior  
 Radix mesocoli  
 Ileum  
 Sacculus vermiformis  
 D. D. superior

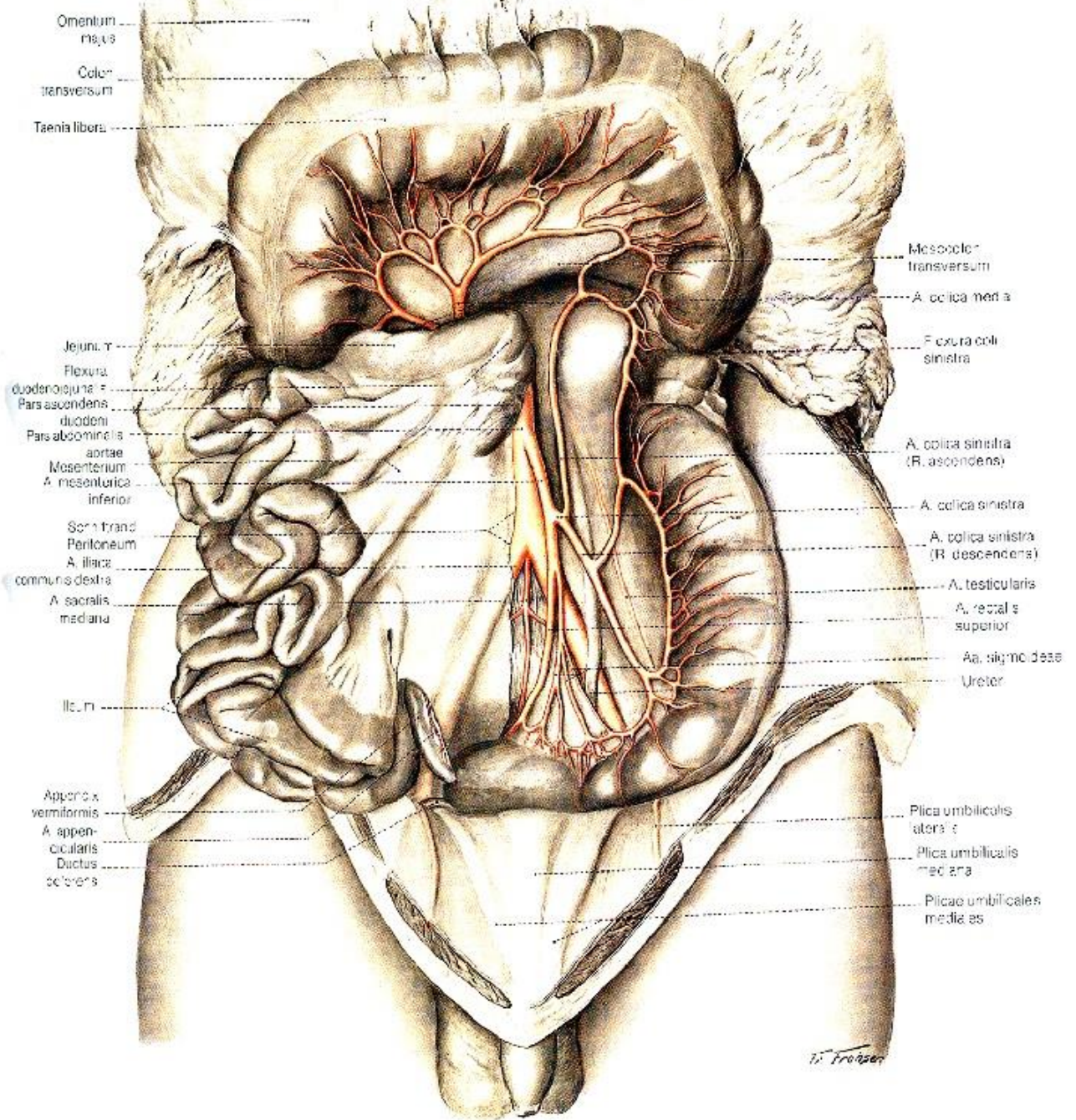
# Mesenterium (radix mesenterii)





# Mesocolon transversum, mesosigmoideum





Omentum  
majus  
Colon  
transversum  
Taenia libera

Jejunum  
Flexura  
duodenojejunalis  
Pars ascendens  
duodeni  
Pars abdominalis  
aortae  
Mesenterium  
A. mesenterica  
inferior  
Sectio trans  
Peritoneum  
A. iliaca  
communis dextra  
A. sacralis  
mediana  
Ileum

Appendix  
vermiformis  
A. appen-  
dicularis  
Ductus  
colecysticus

Mesocolon  
transversum  
A. colica media  
Flexura coli  
sinistra

A. colica sinistra  
(R. ascendens)

A. colica sinistra

A. colica sinistra  
(R. descendens)

A. testicularis

A. rectalis  
superior

Aa. sigmoideae  
Ureter

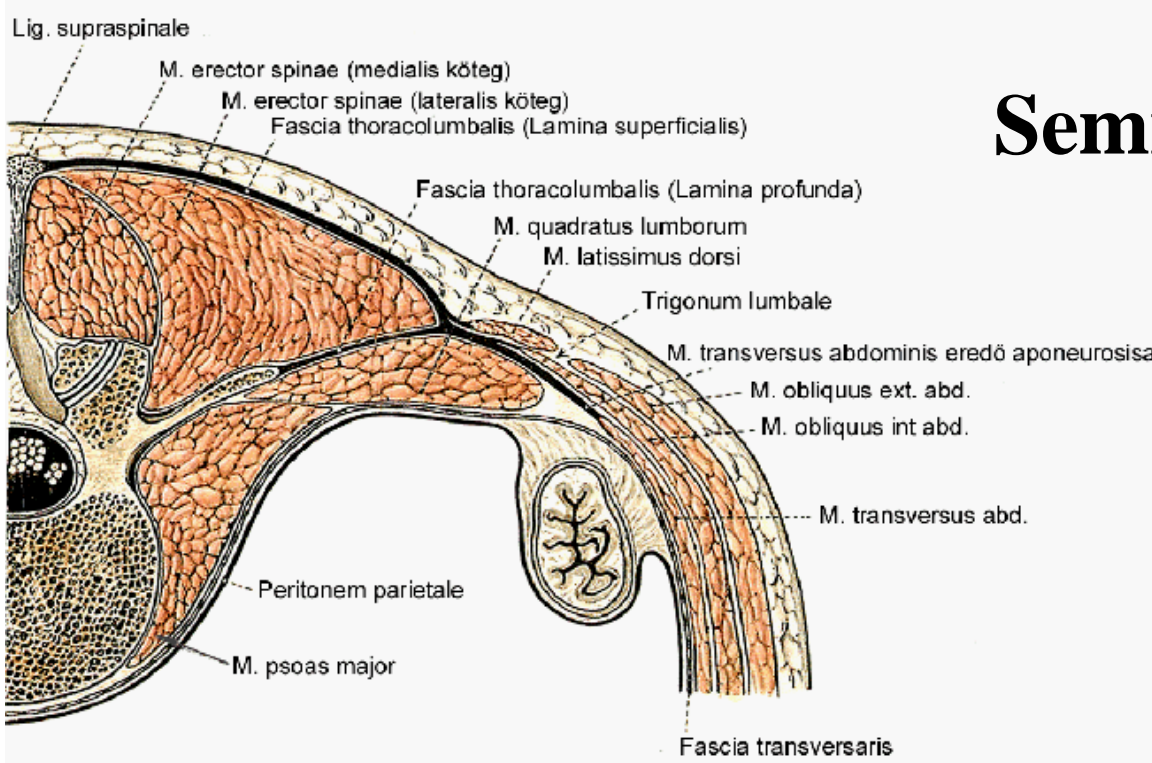
Plica umbilicalis  
altera

Plica umbilicalis  
mediana

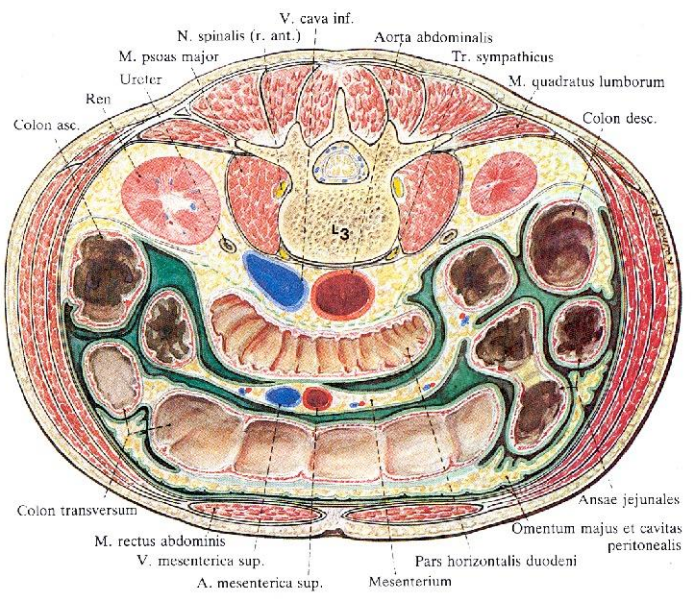
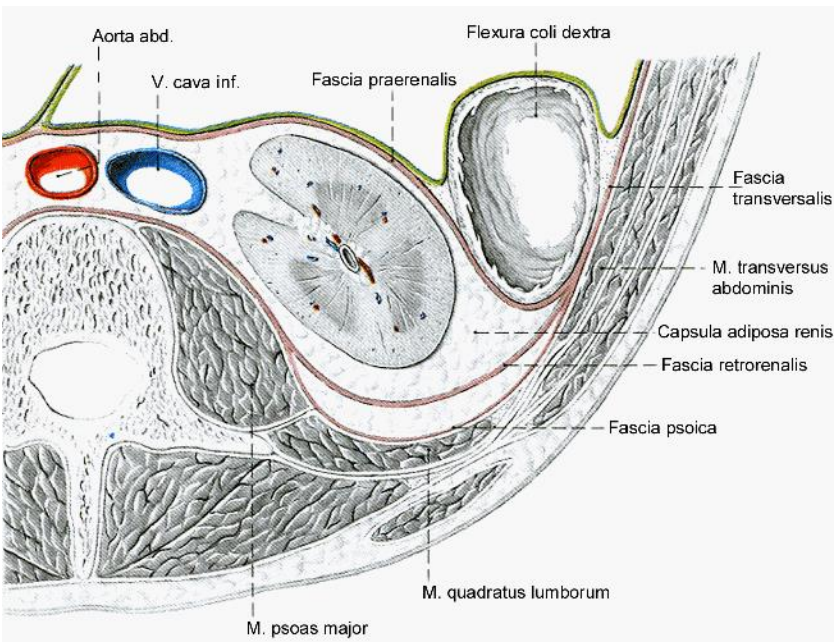
Plicae umbilicales  
mediae

H. Frazer

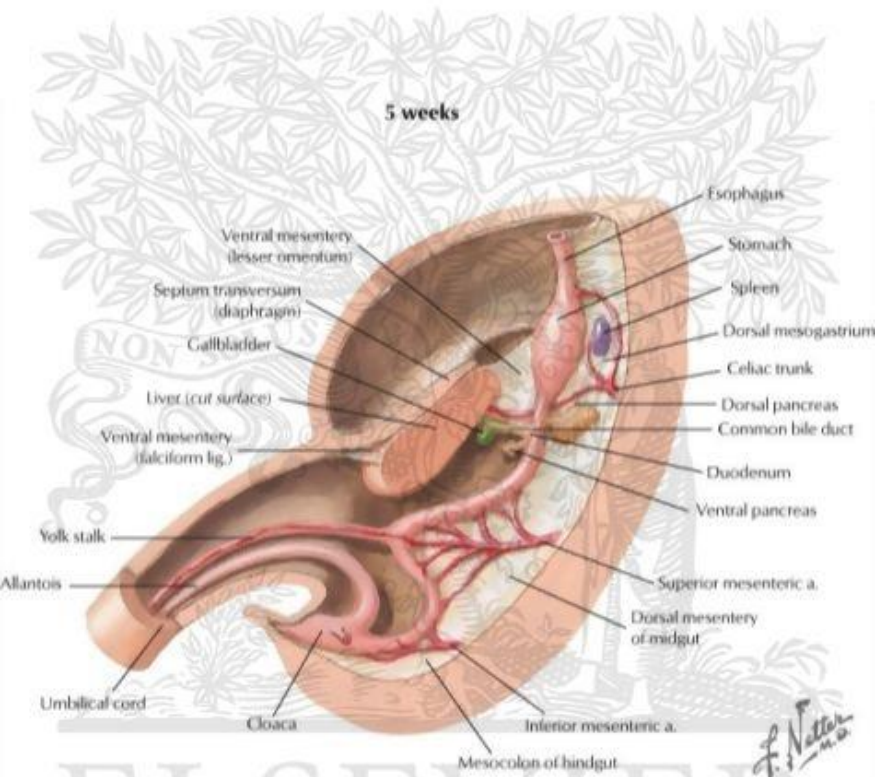
# Semi-intraperitonealis!



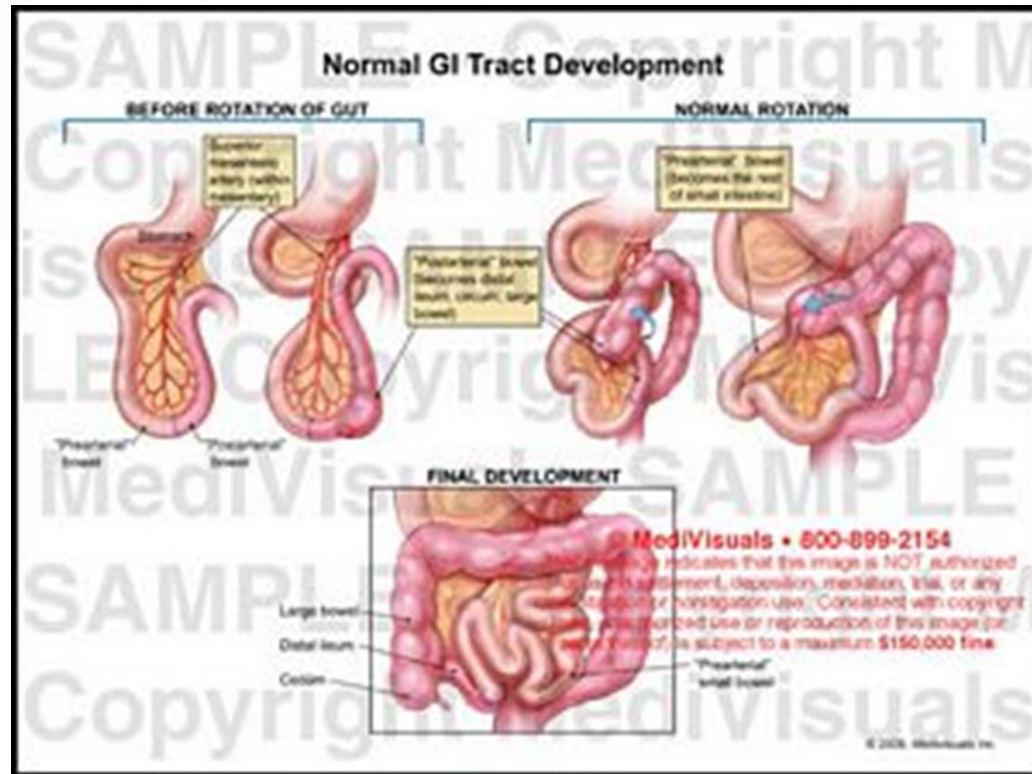
Rectum:  
 - (semi)intra  
 -retro  
 -infra



# Fejlődés

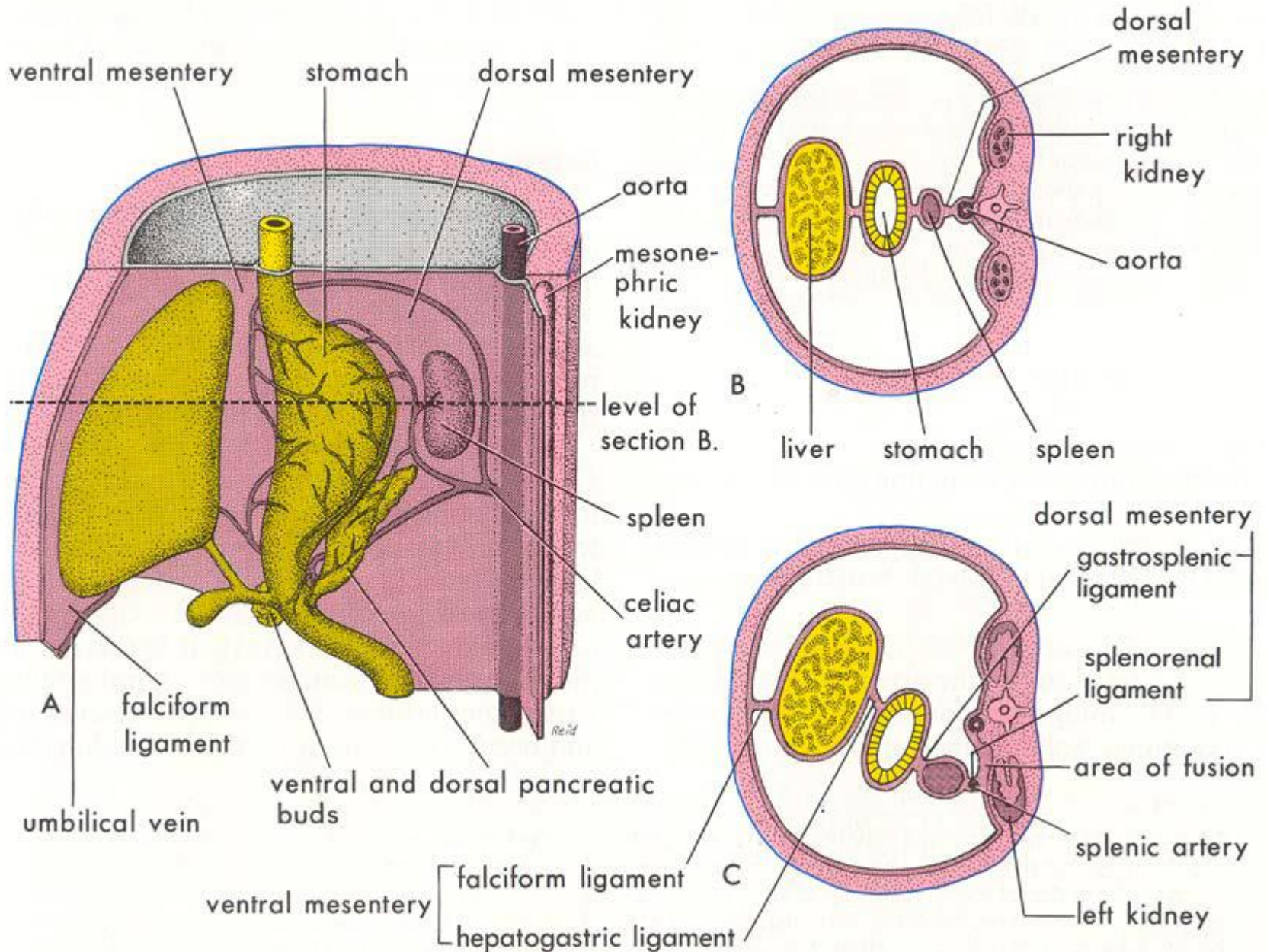


**Mesenterium ventrale**  
**Mesenterium dorsale**

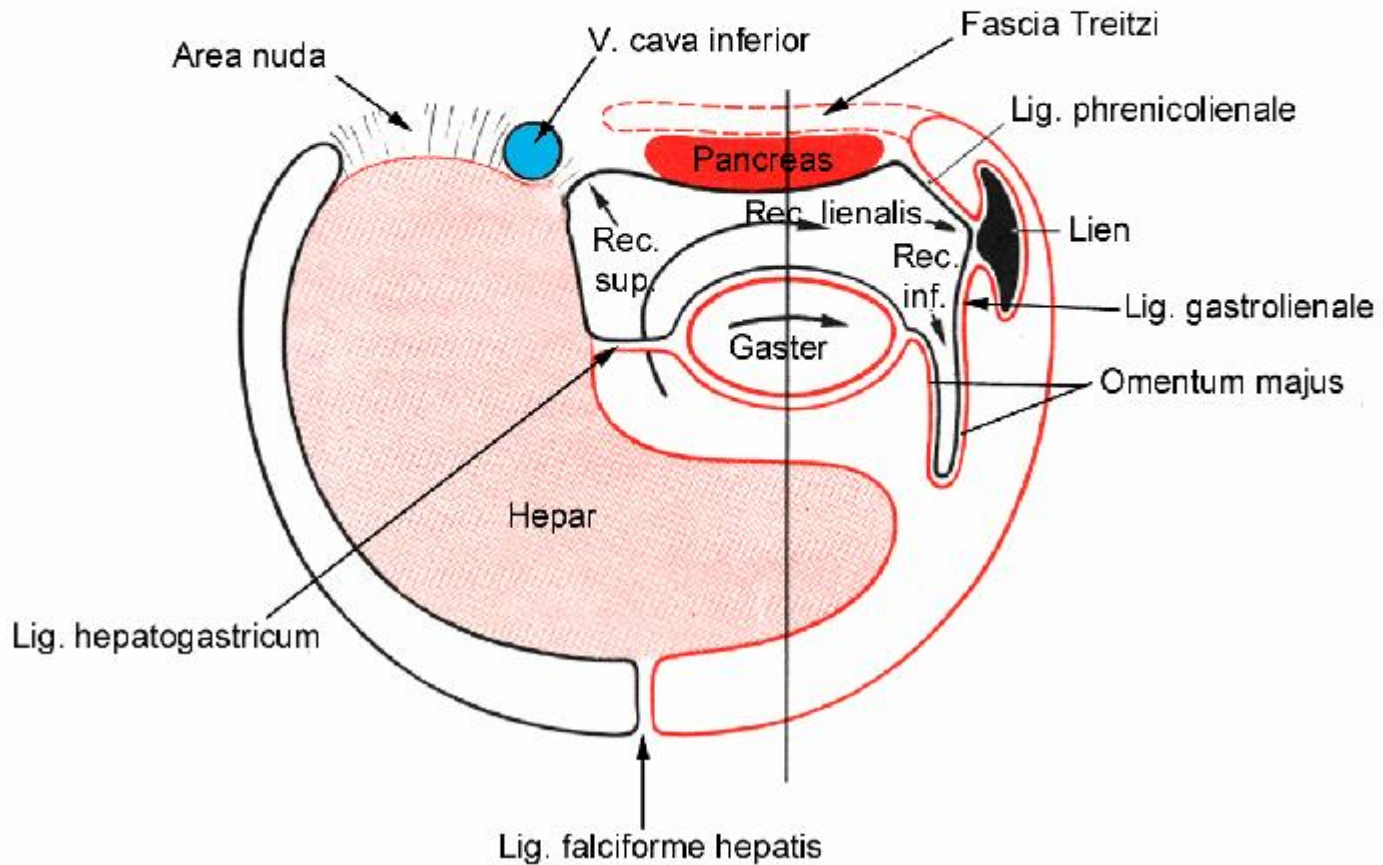
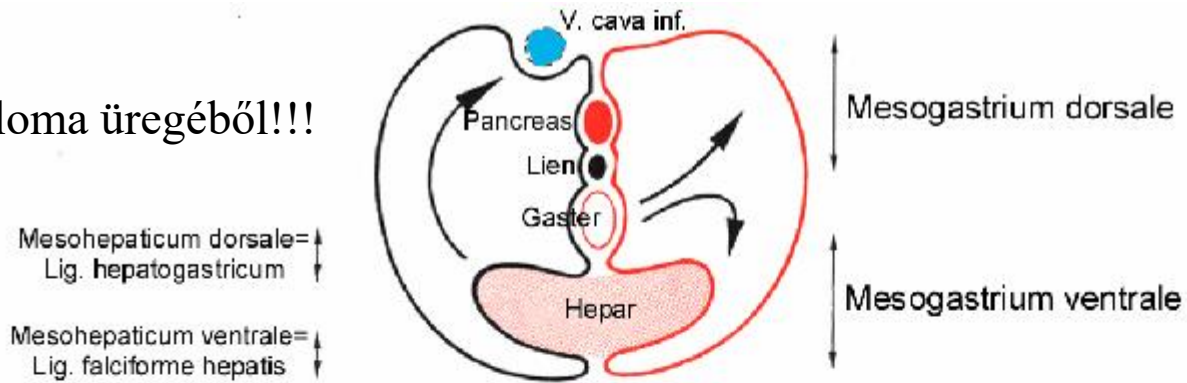


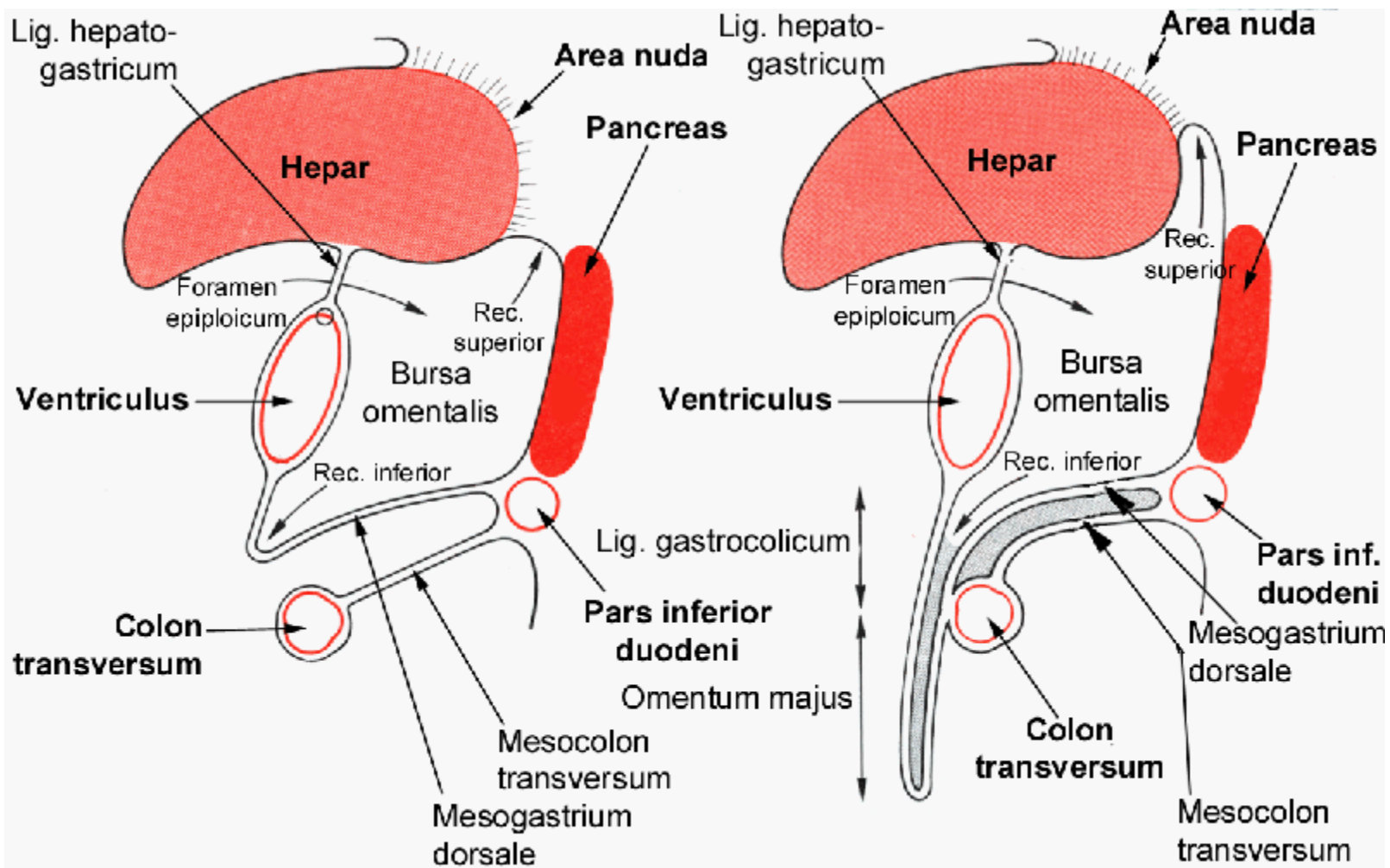


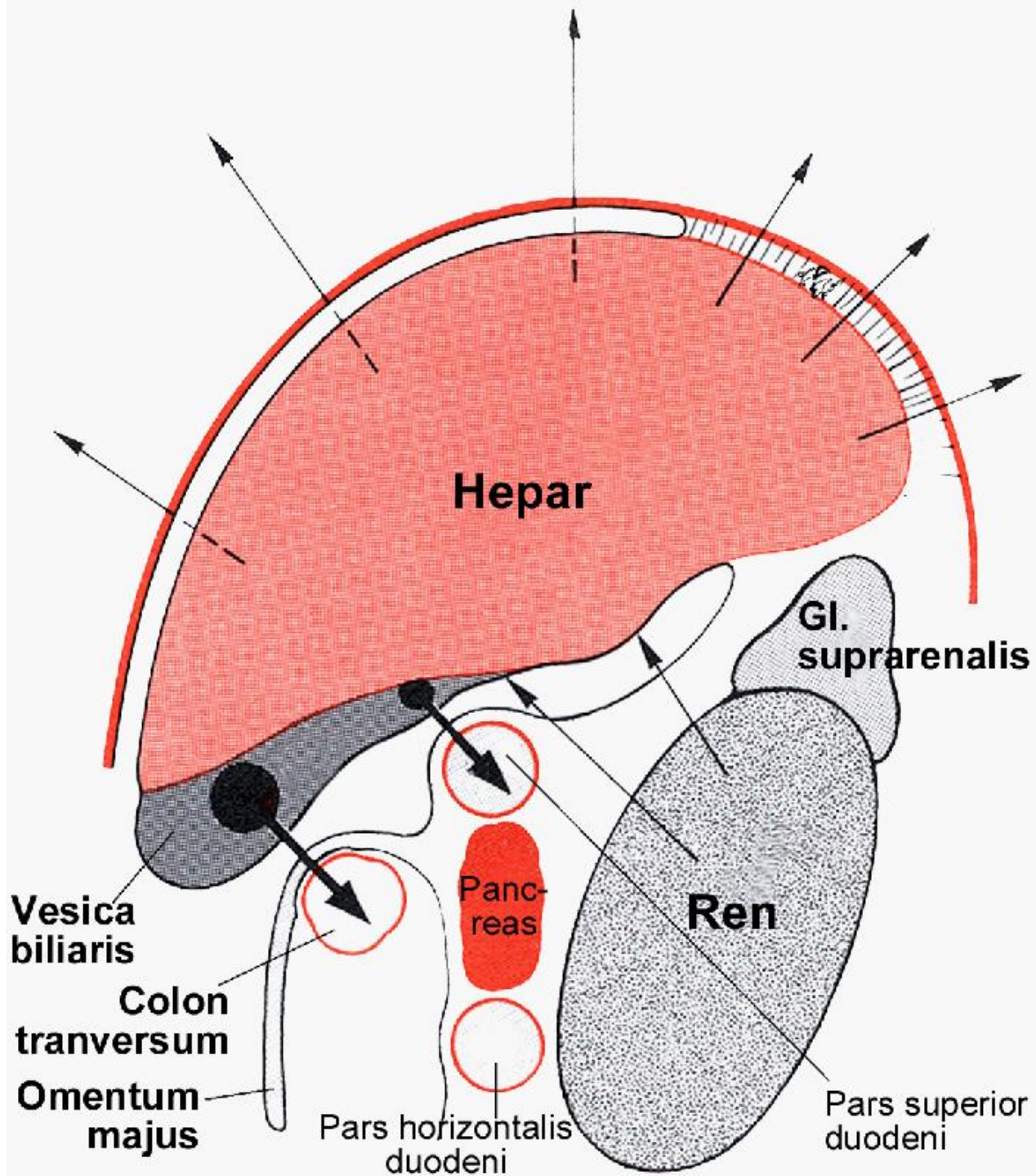
# Az eseményeket követve megmagyarázhatjuk a kettőzetek fejlődéstani eredetét



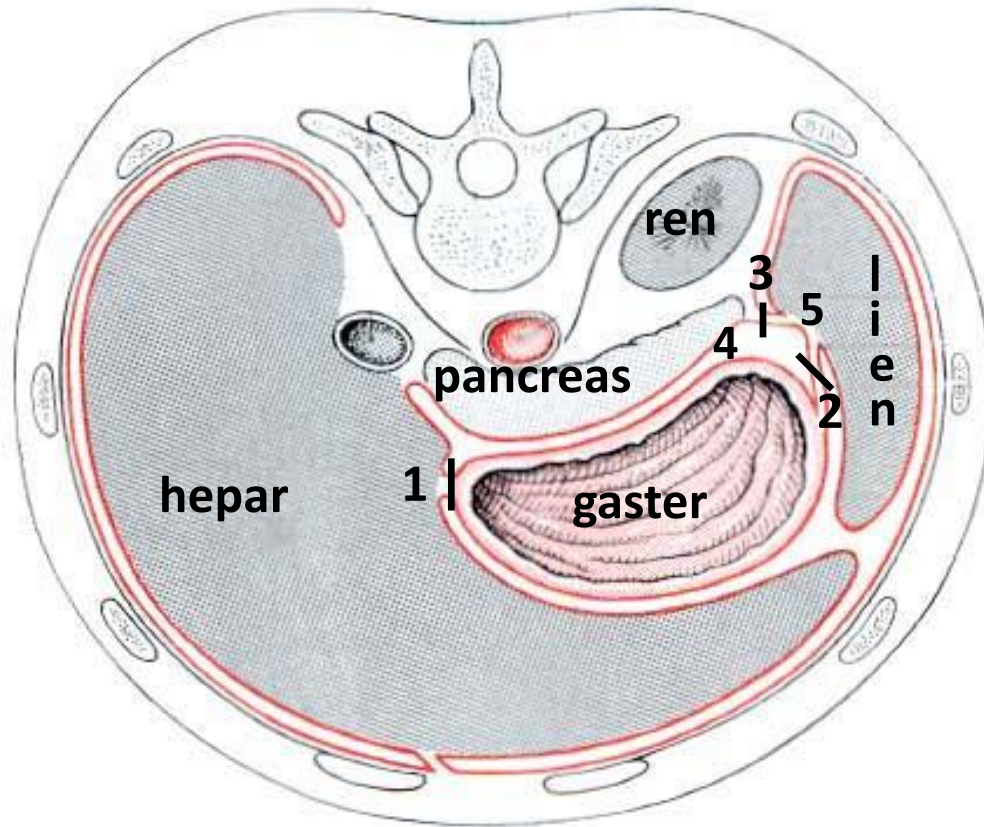
Jobb ceoloma üregéből!!!





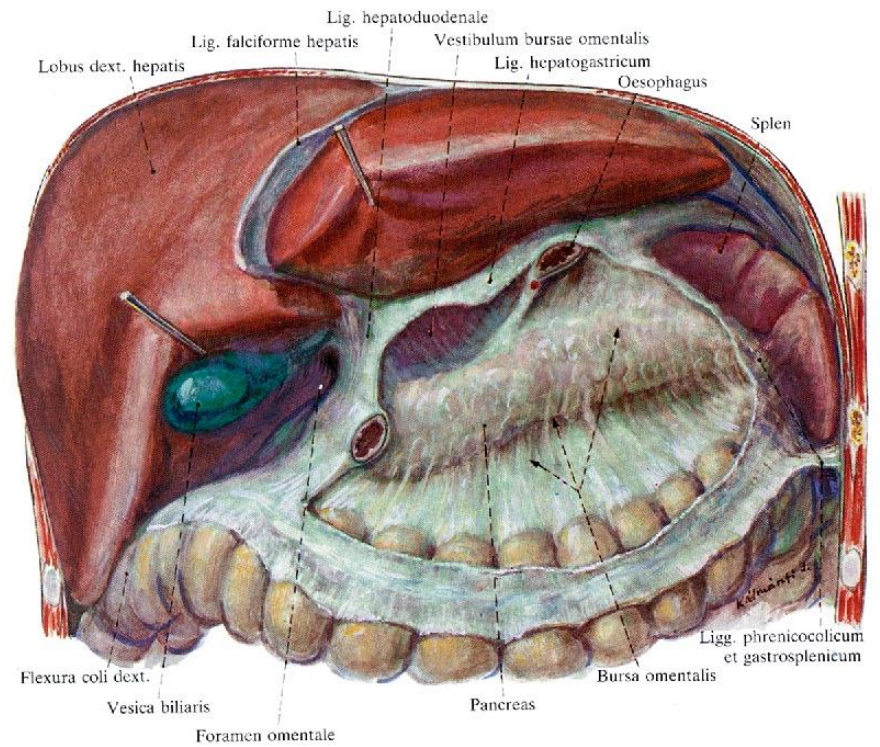
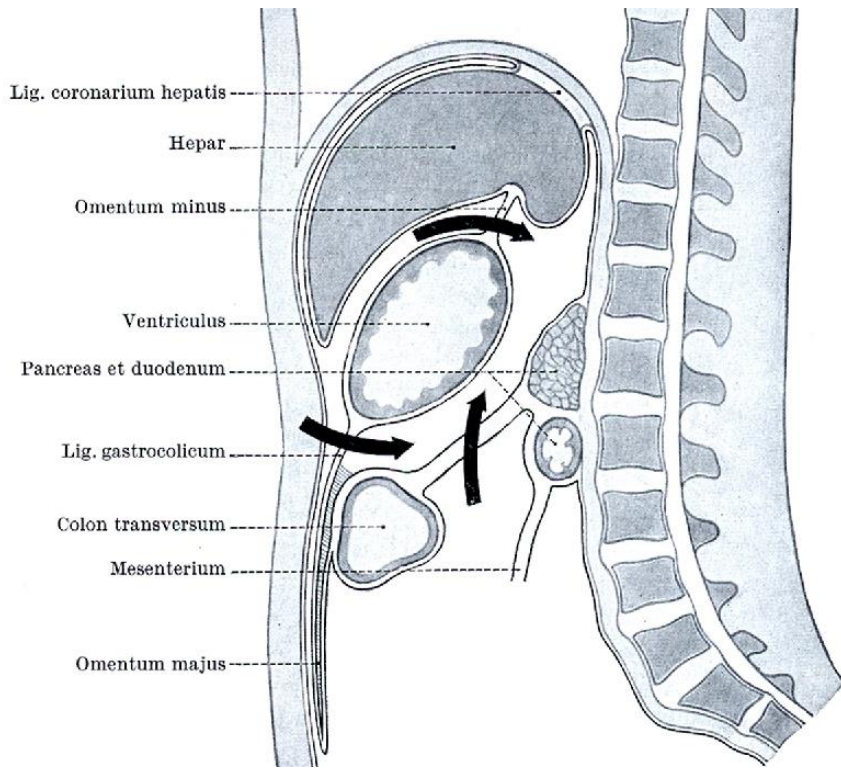


# Bursa omentalis



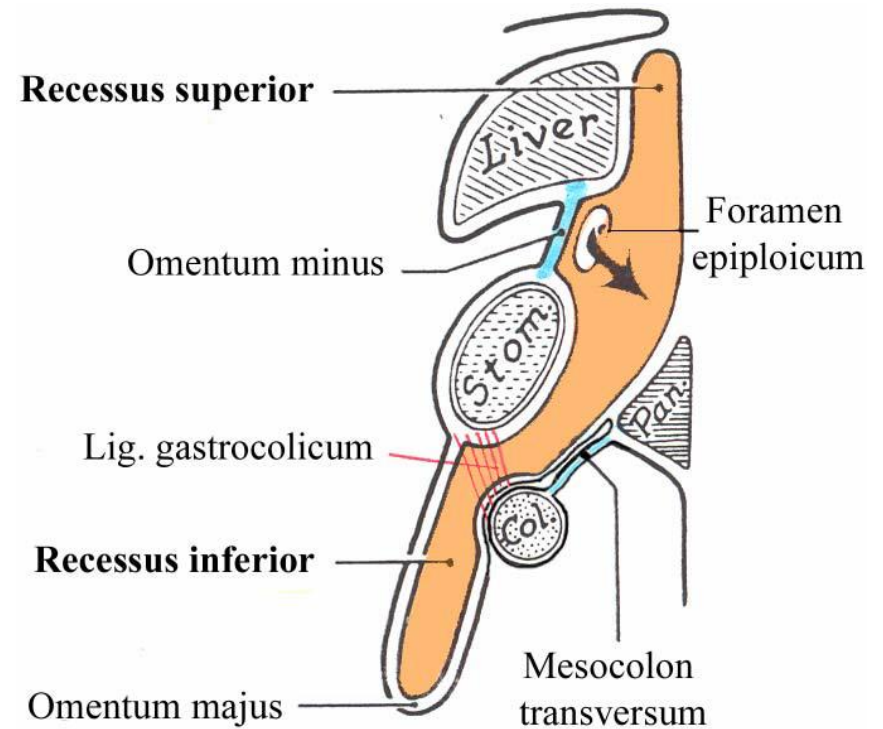
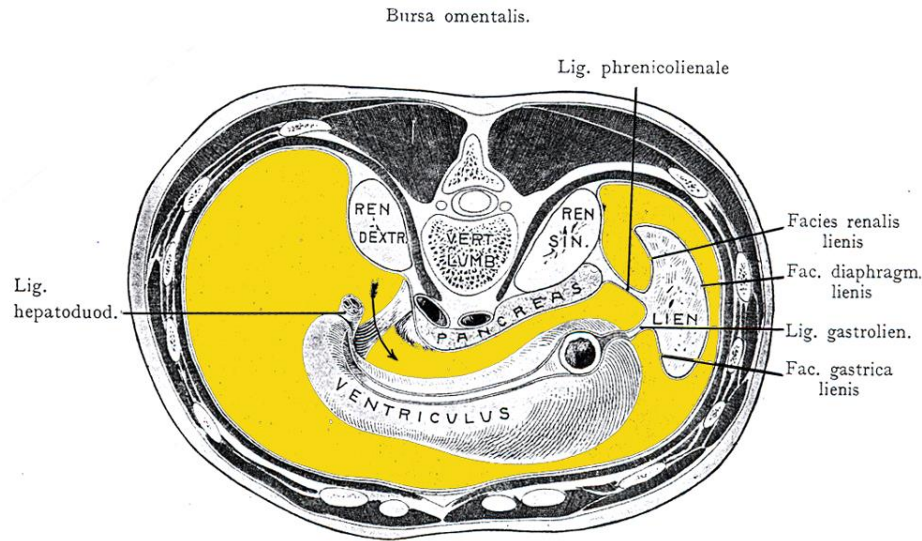
1. lig. hepatogastricum
2. Lig. gastrolienale
3. Lig. phrenicolienale
4. BURSA OMENTALIS
5. Recessus lienalis  
bursae omentalis

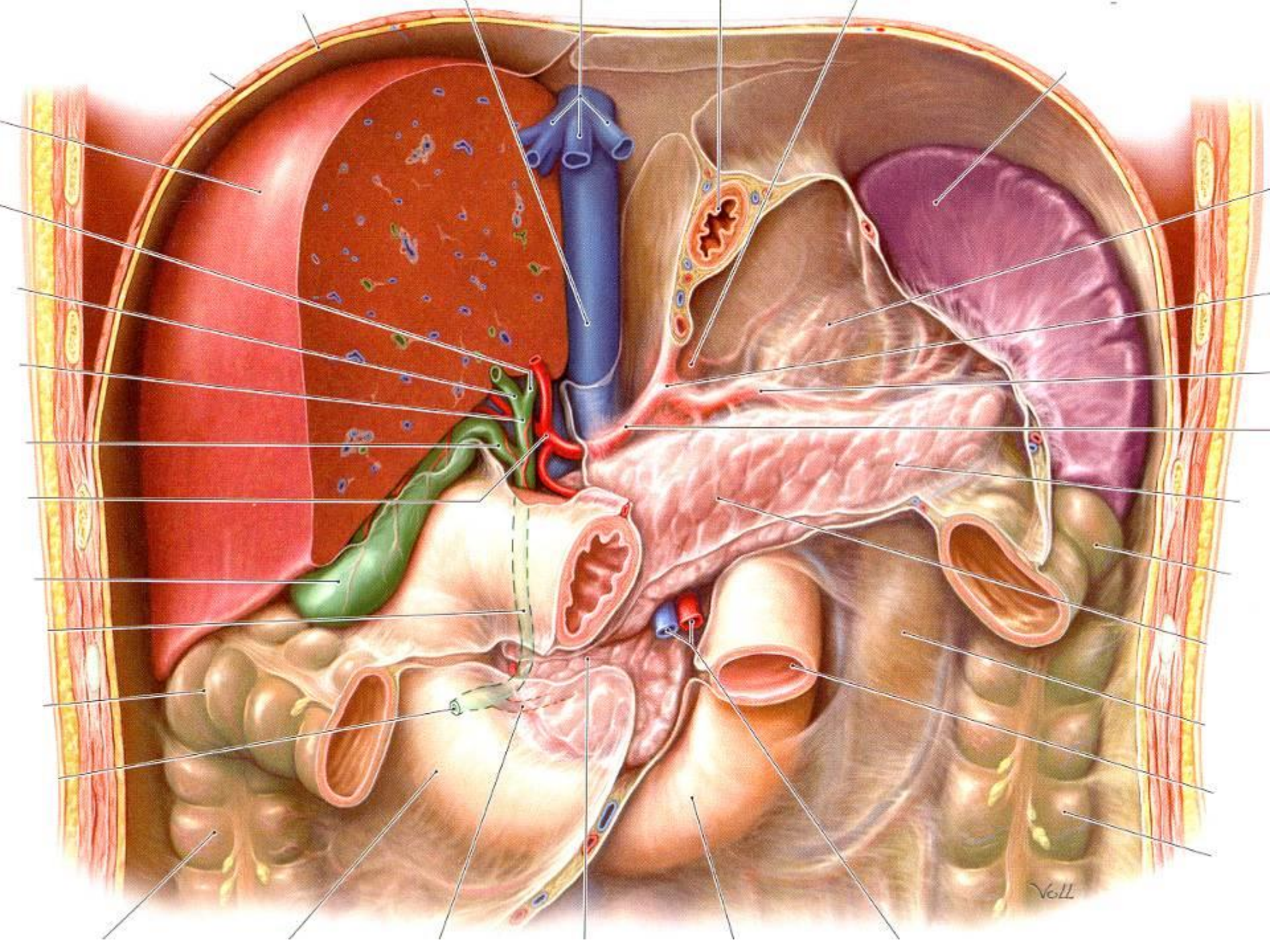
# Bursa omentalis



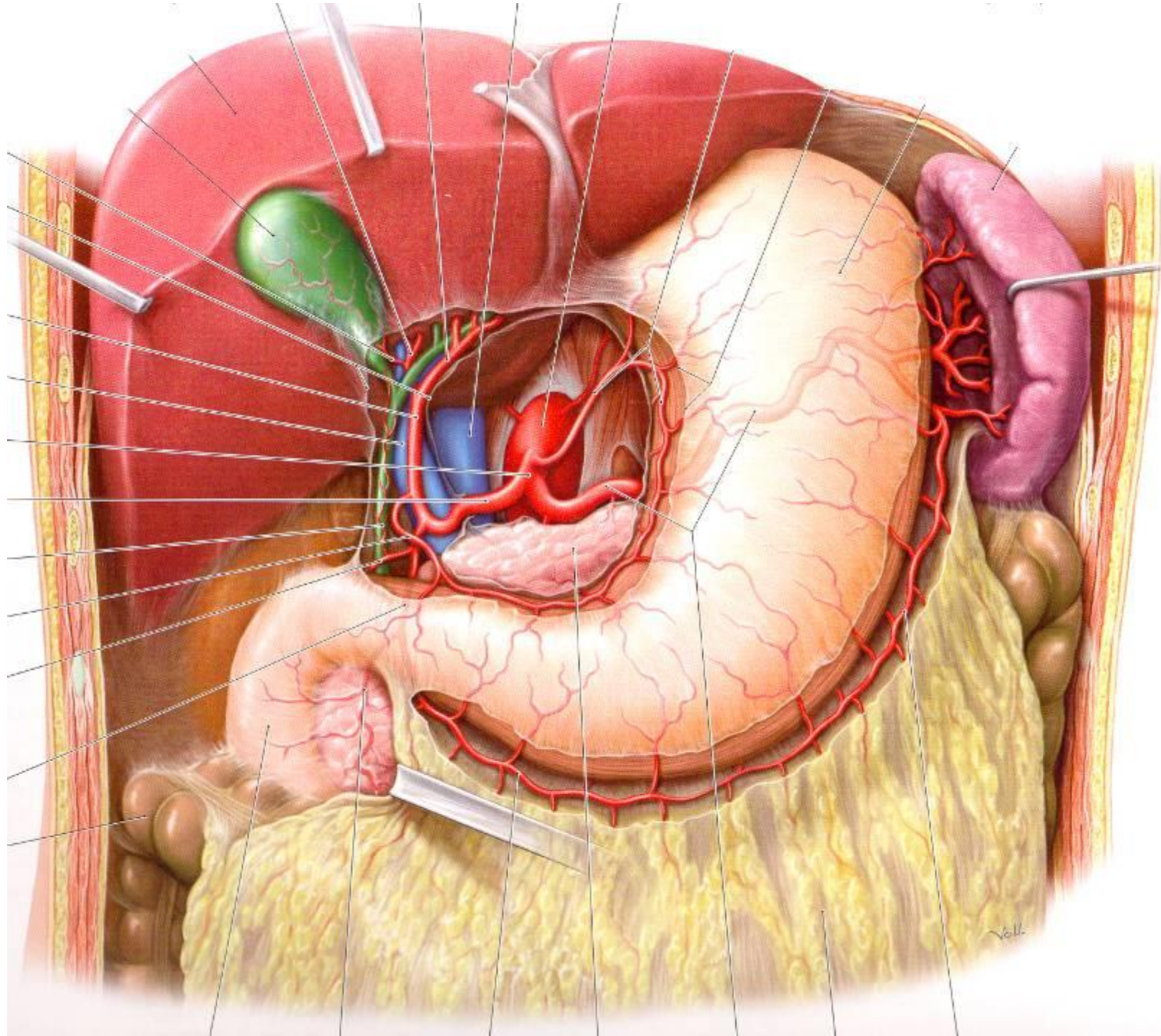
# Bursa omentalis:

- Foramen epiploicum (Winslow) határai!!!
- Vestibulum
- Plica gastropancreatica
- Cavum proprium
- Recessus sup.
- Recessus inf.
- Recessus lienalis

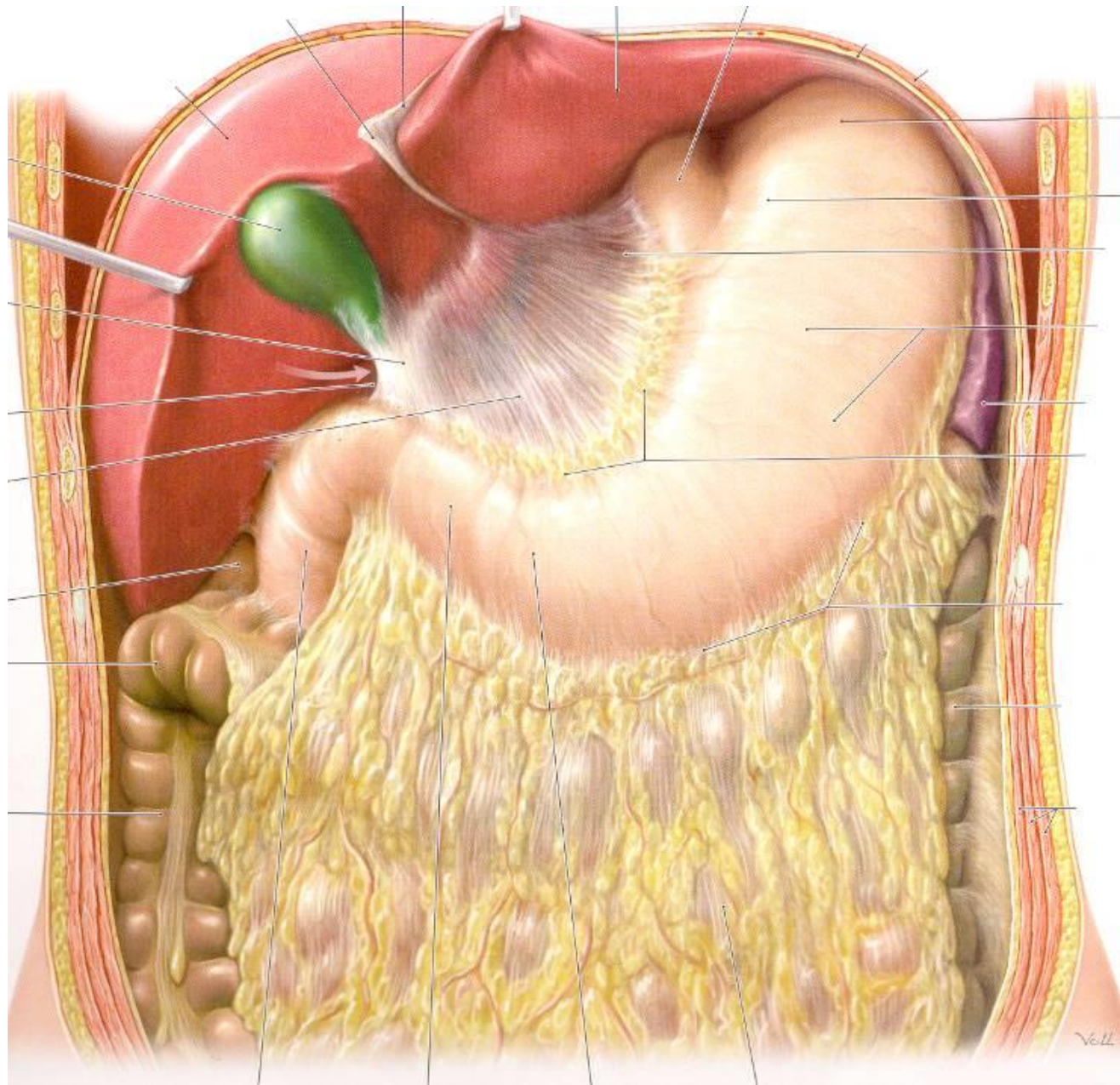


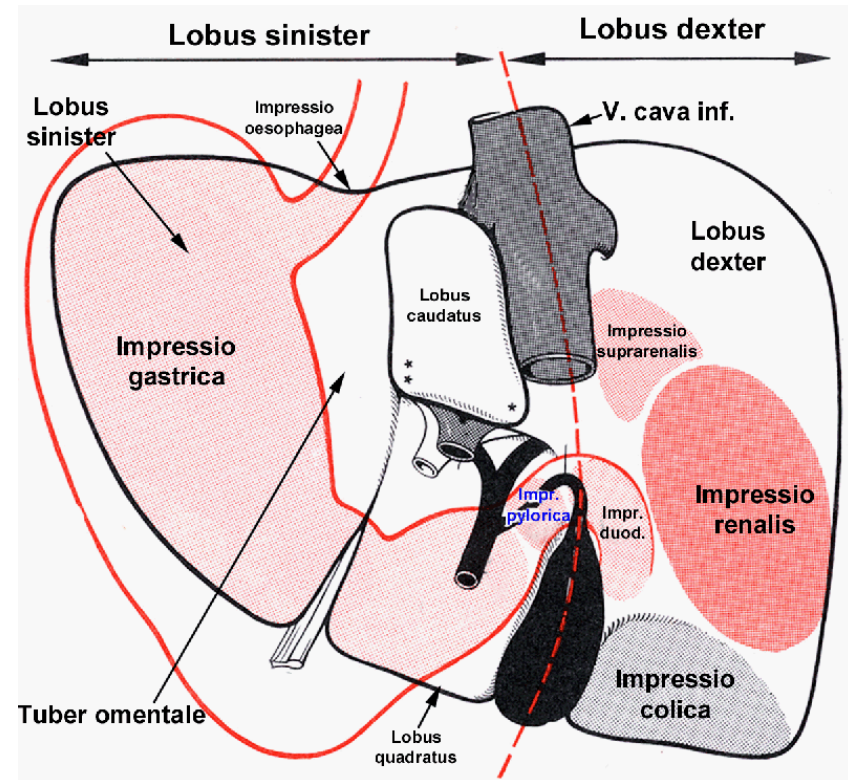
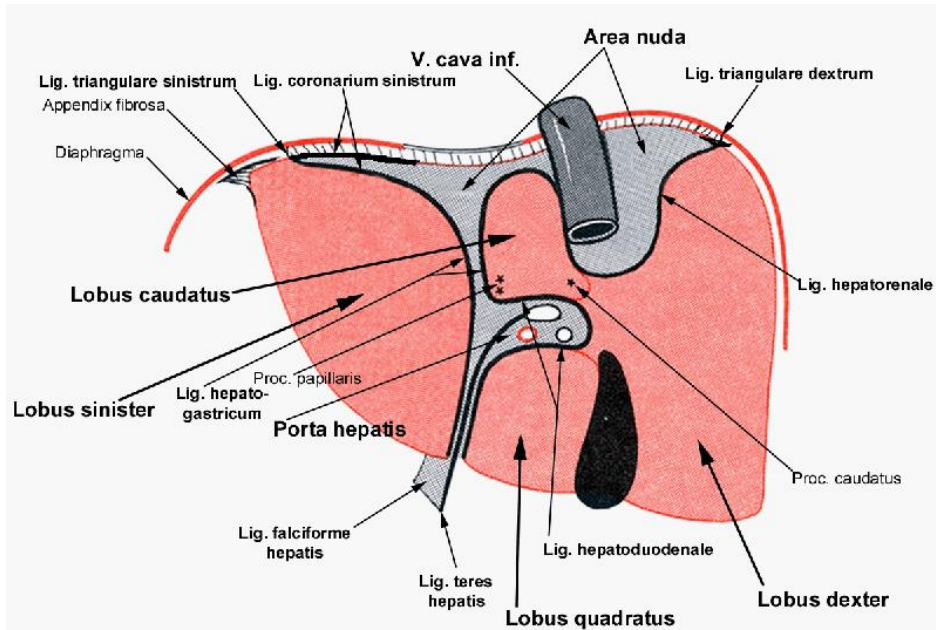






# Omentum minus et majus





## Omentum minus:

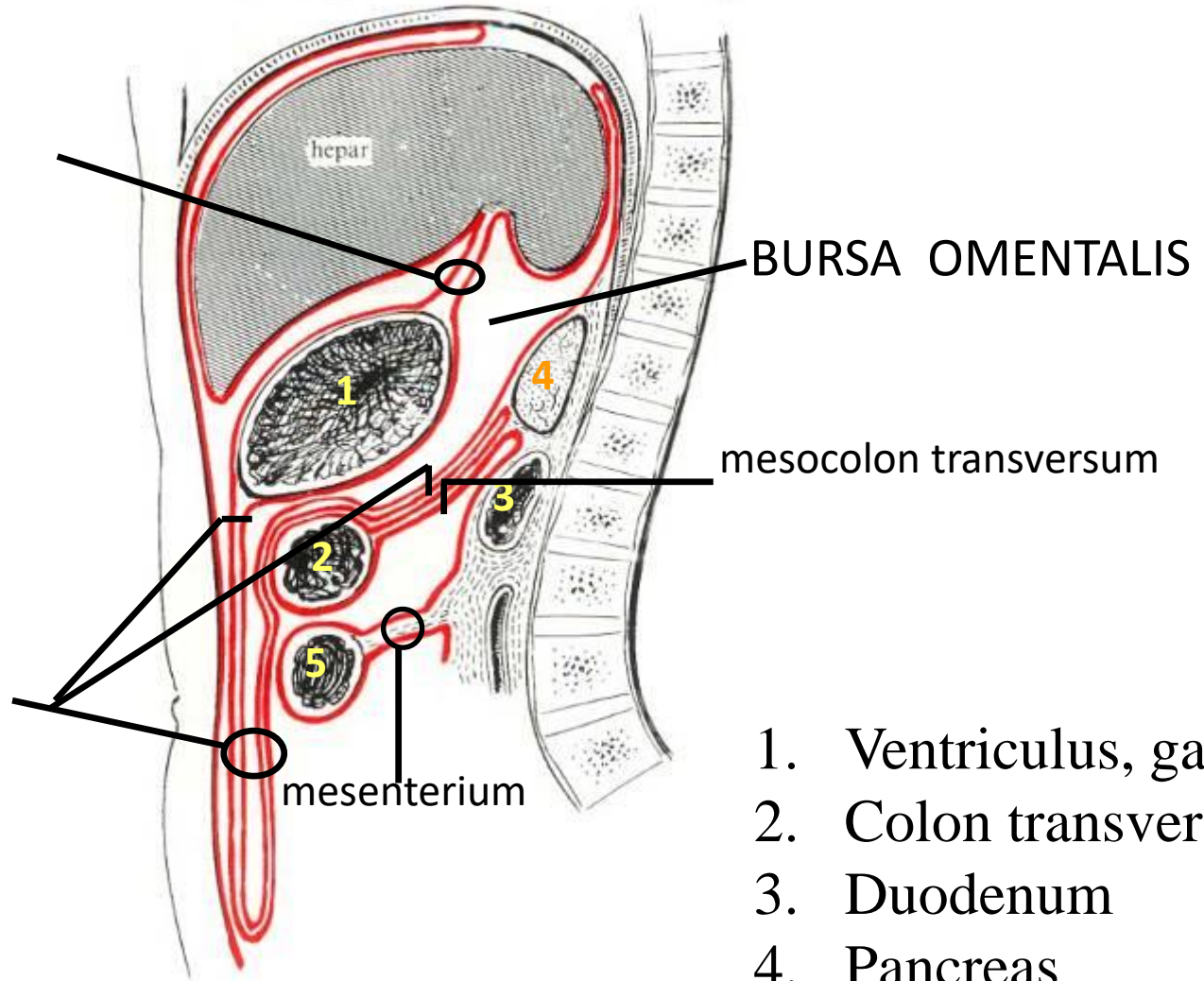
- lig. hepatogastricum
- lig. hepatoduodenale

**Kettőzet („négyzet”, „hatozat”)!!!**

**Lig. gastrocolicum =  
omentum majus + mesocolon transversum**

lig. hepatogastricum

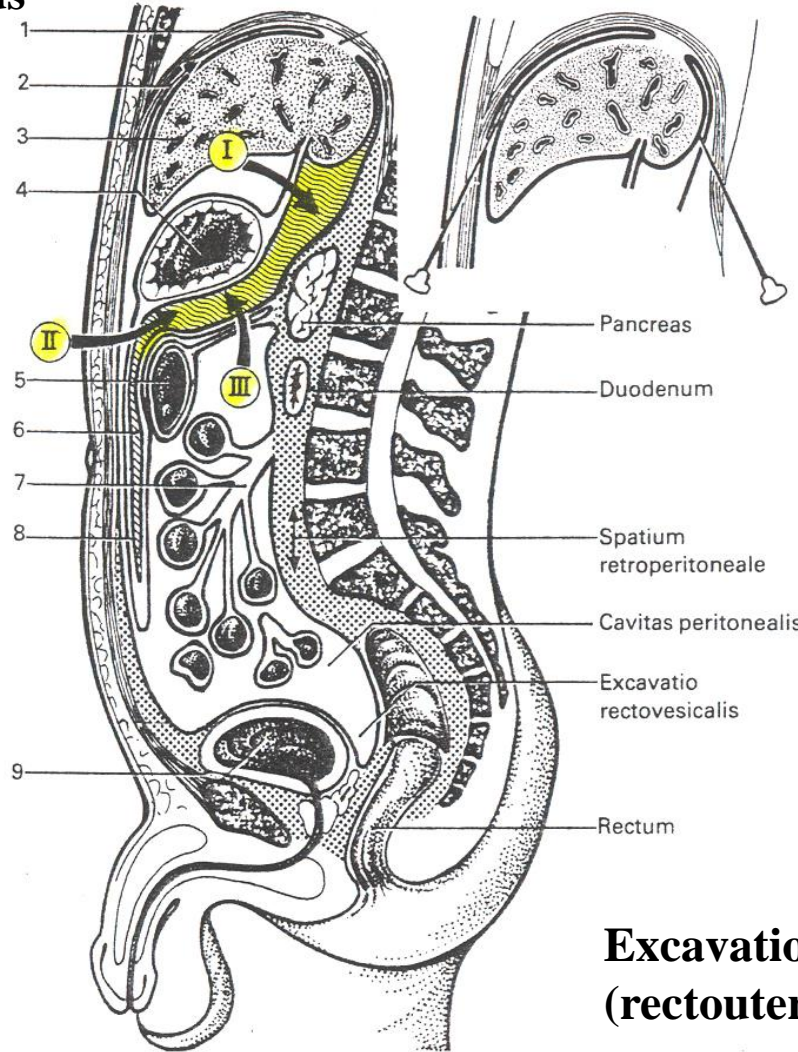
omentum majus



1. Ventriculus, gaster
2. Colon transversum
3. Duodenum
4. Pancreas
5. Vékonybelek  
(jejunum, ileum)

# A hasüreg legmagasabb és legmélyebb pontja

**Recessus hepatophrenicus**  
**= subphrenicus**



**Excavatio rectovesicalis**  
**(rectouterina) - Douglas**

# Hashártyai recessusok és jelentőségük

