

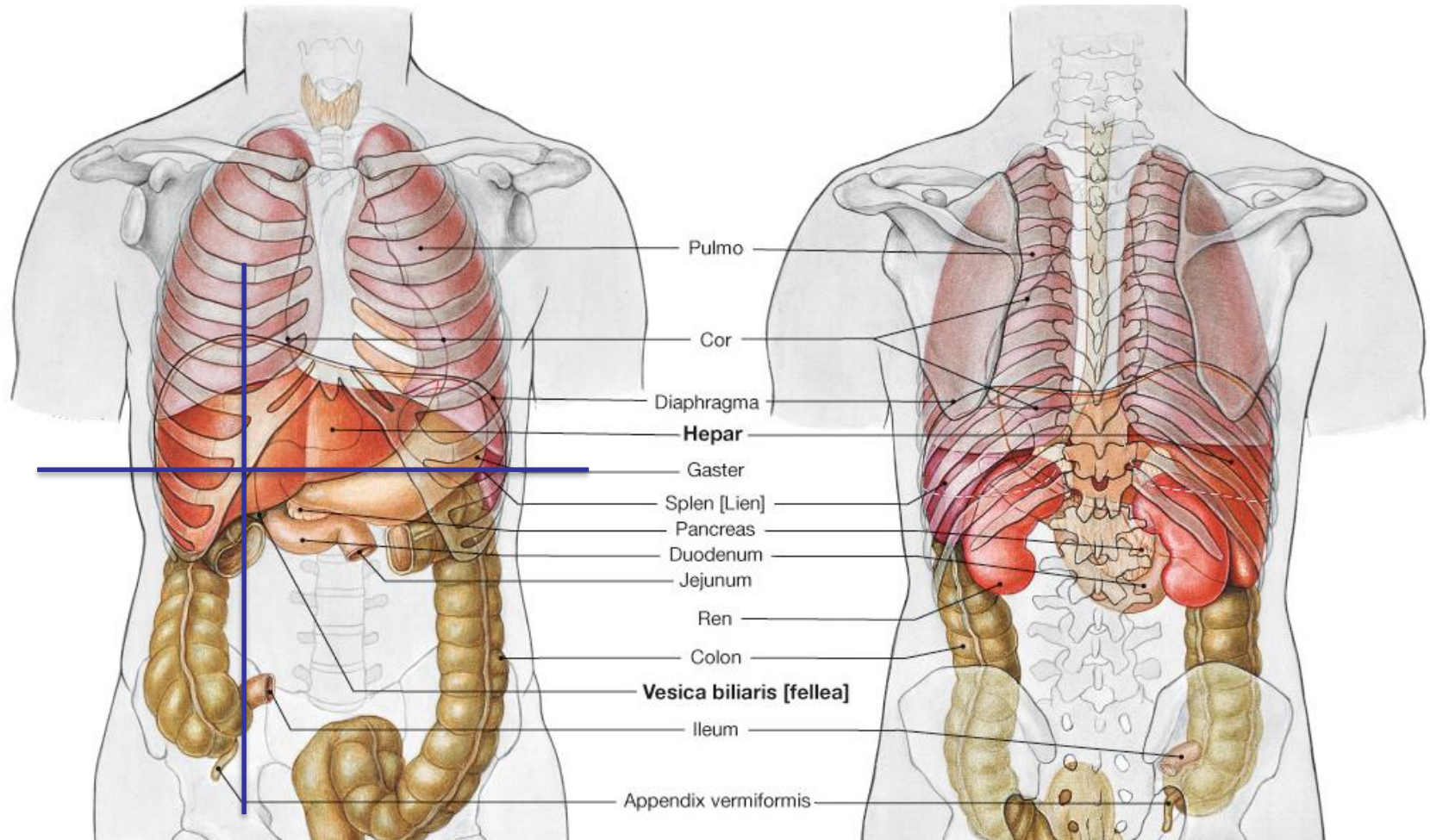


Máj, epehólyag, pancreas, lép

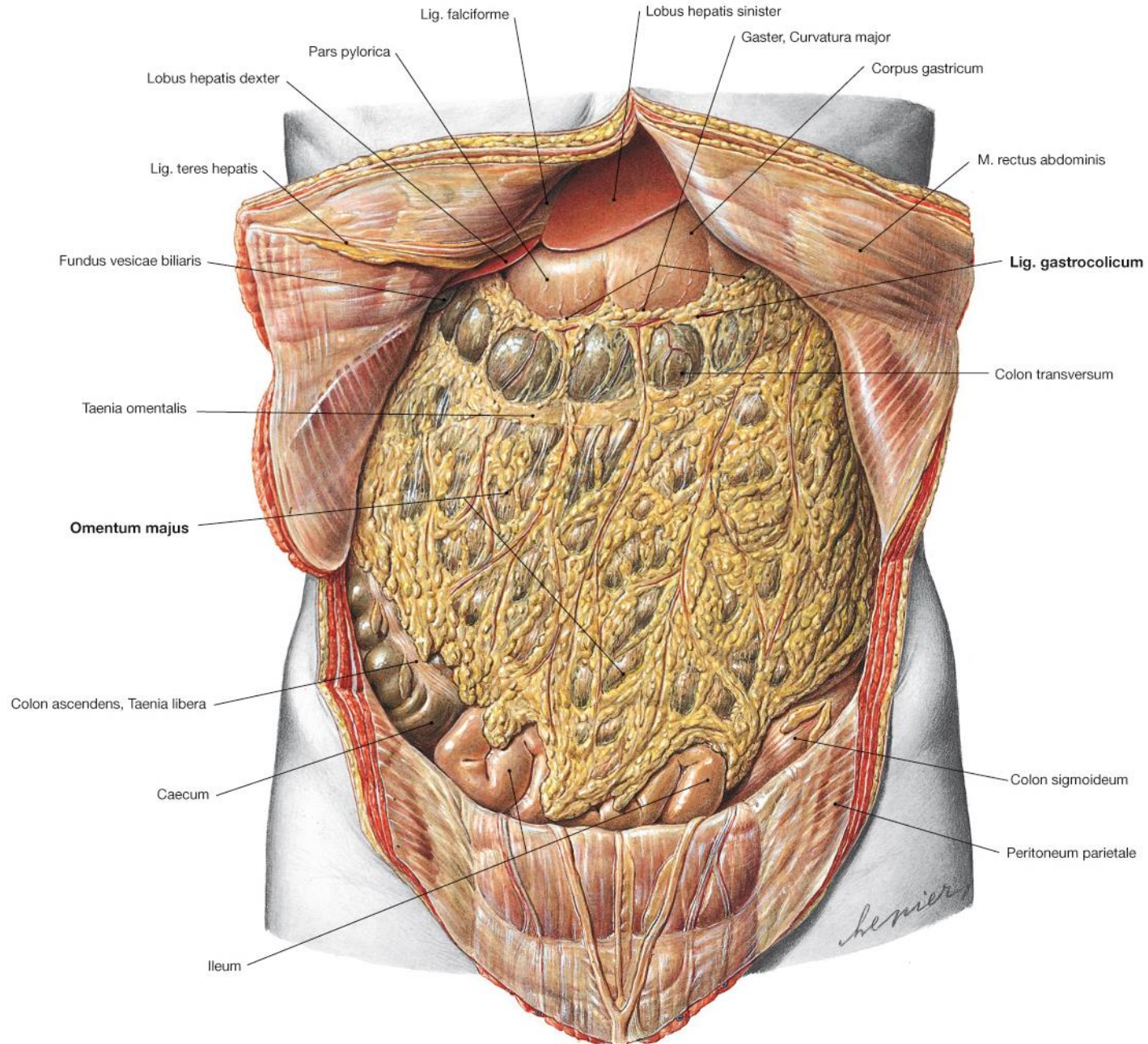
Dr. Gerber Gábor

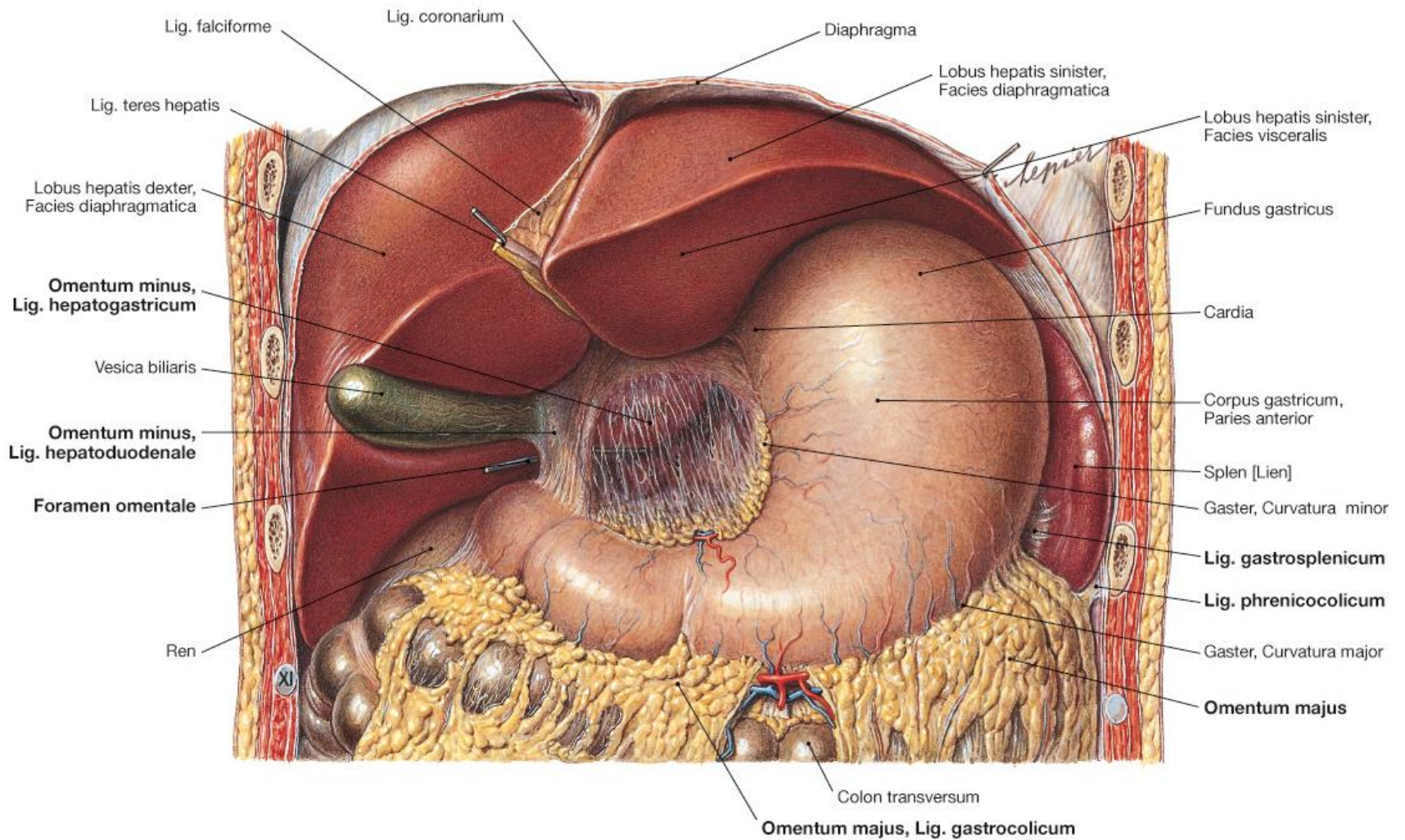
- A máj az emberi test legnagyobb mirigye (kb. 1.5 kg).
- A tápcsatornából felszívott szénhidrátok, lipidek és aminosavak átalakítása: lebontás energiatermelés céljából vagy új makromolekulák előállítására.
- A tápcsatornából felszívott mérgező anyagok átalakítása, közömbösítése
- Epetermelés – koleszterin és bilirubin (hemoglobin bomlástermék) eltávolítása, epesavak szintézise (detergens és lipáz aktivátor hatás)
- Fehérjeszintézis: véralvadási faktorok, szérumfehérjék
- Vérvérvétel: magzati korban, ill. szükség esetén (hematológiai kórképek)
- Raktározás: glikogén (gyorsan felhasználható glükóz forrás)

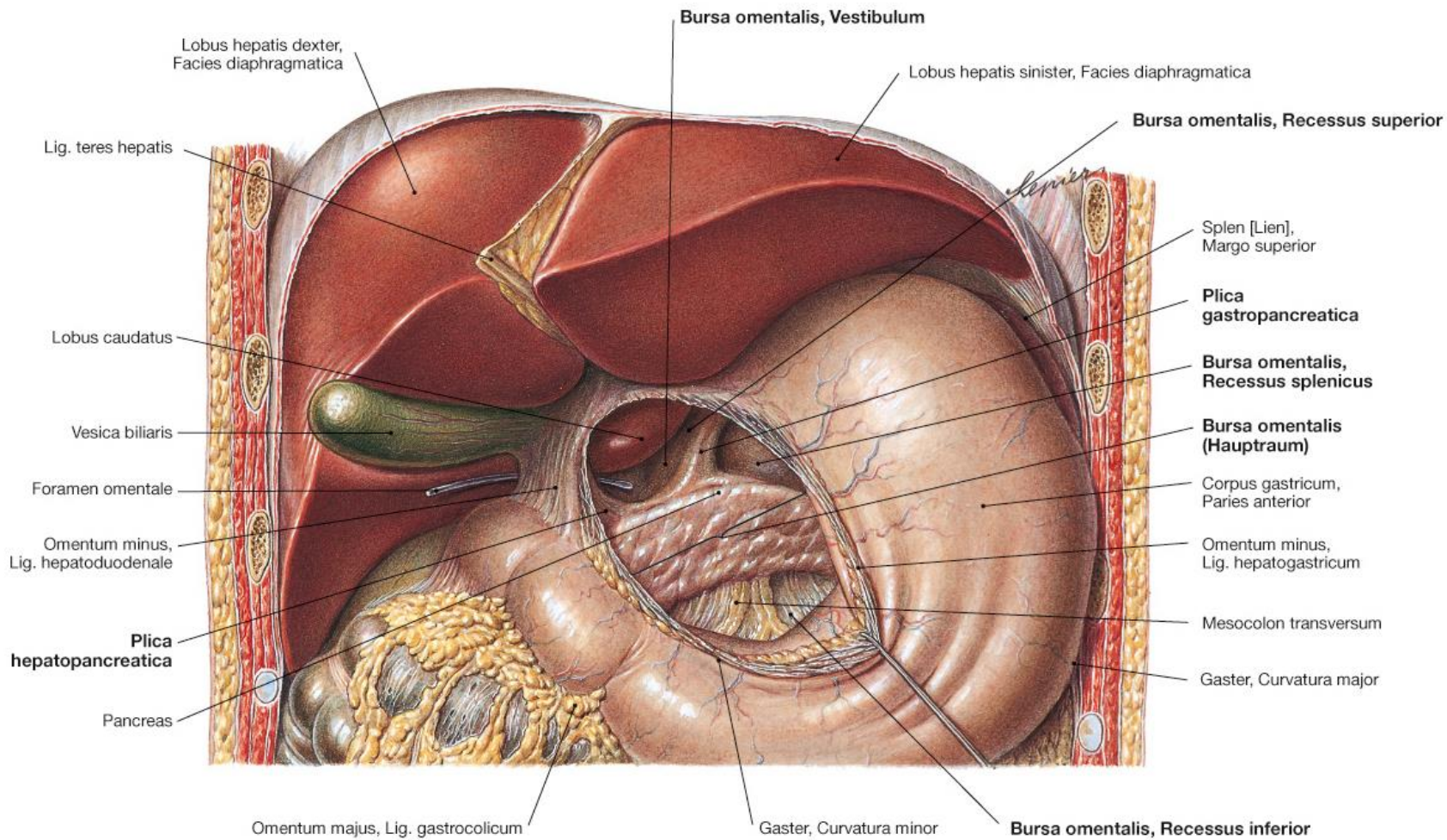
A máj és epehólyag topográfiája

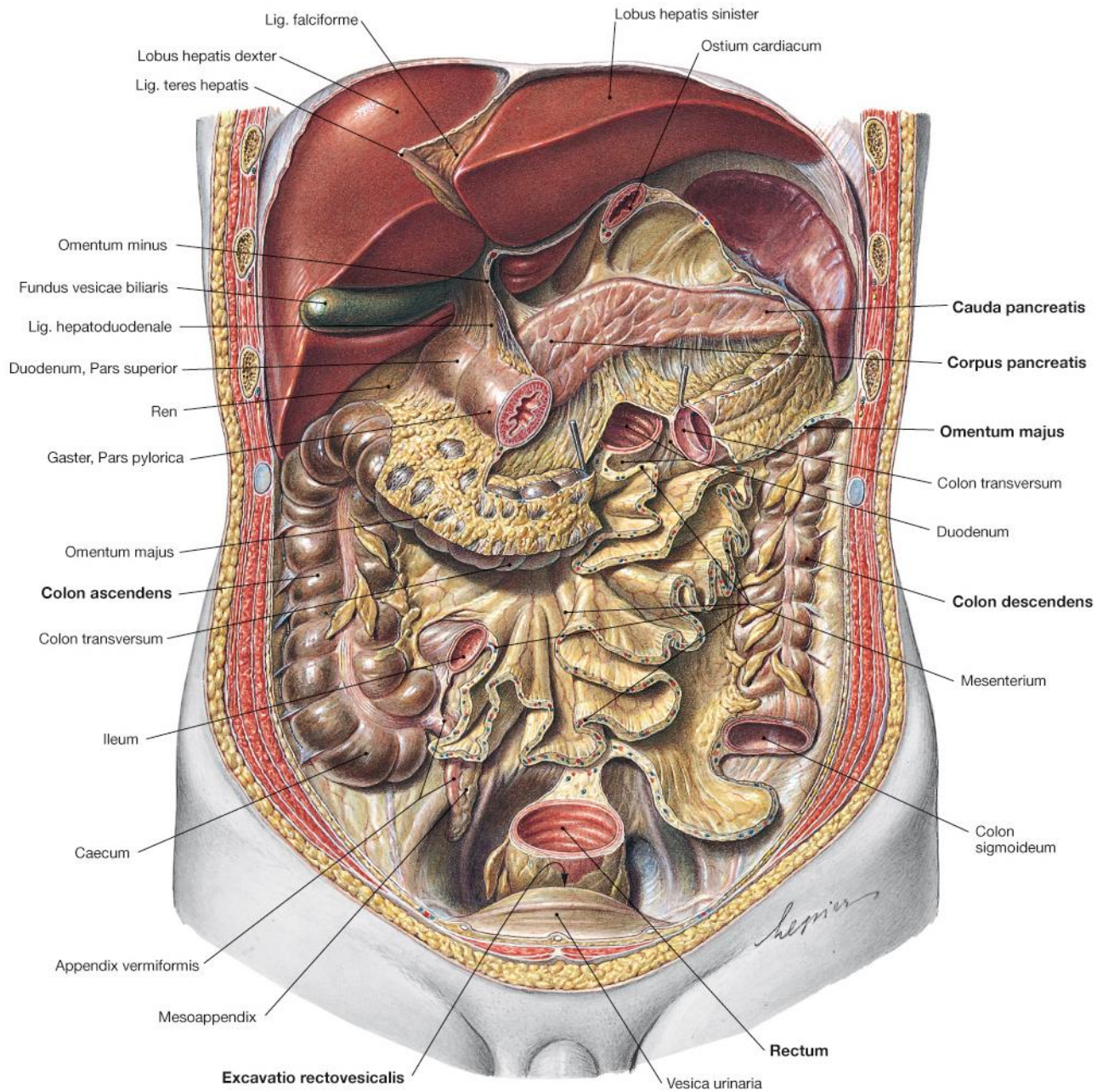


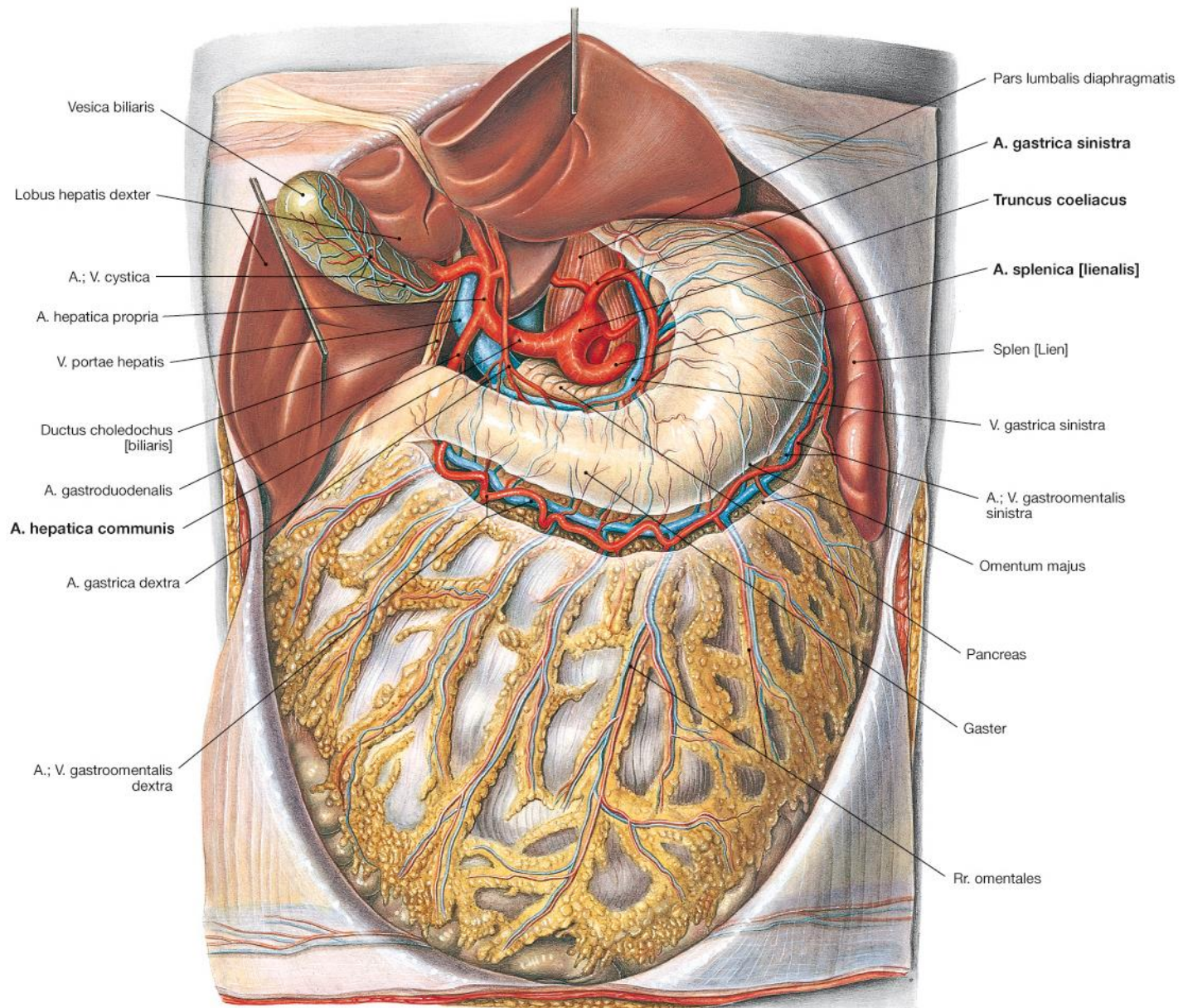


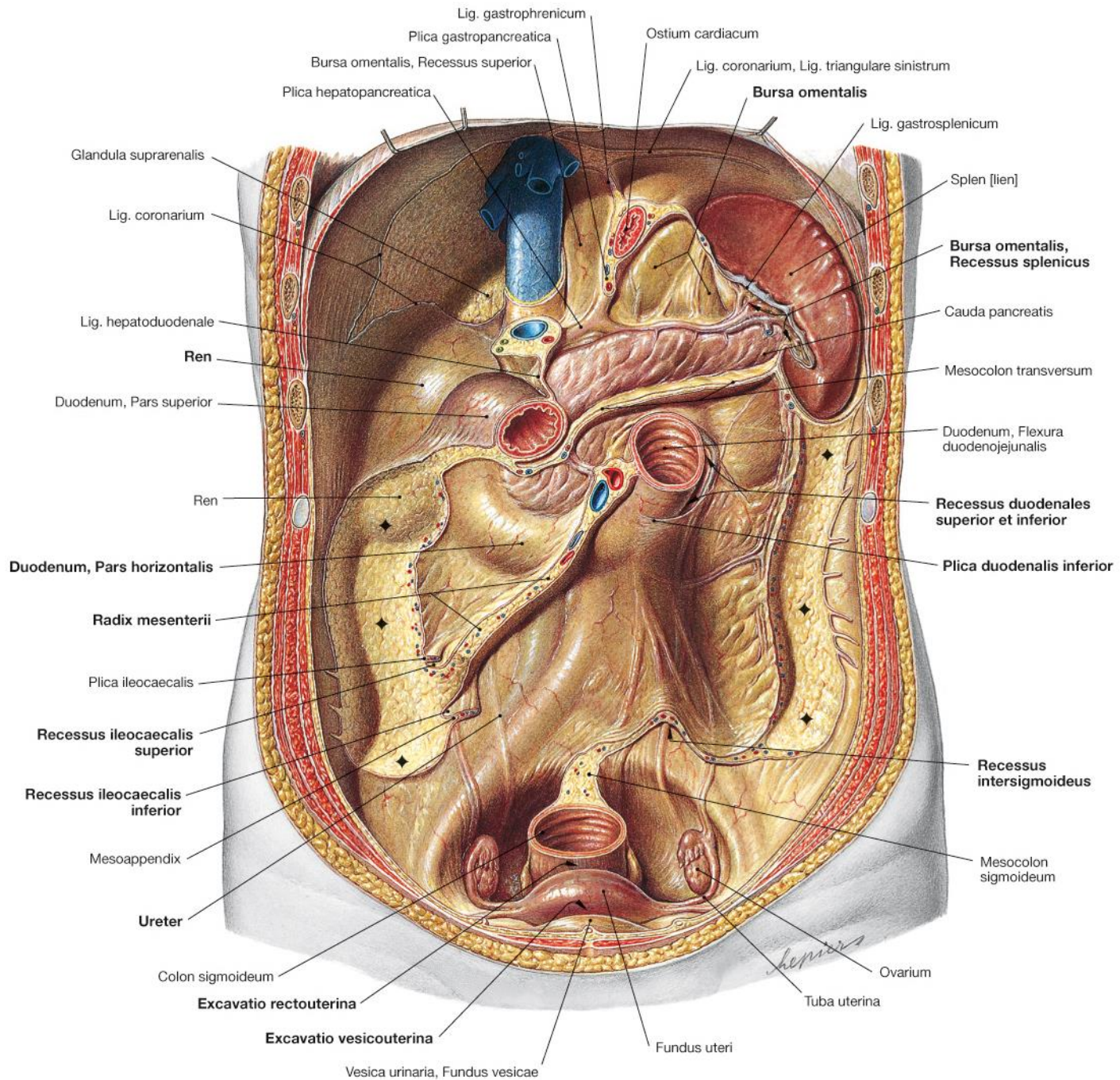




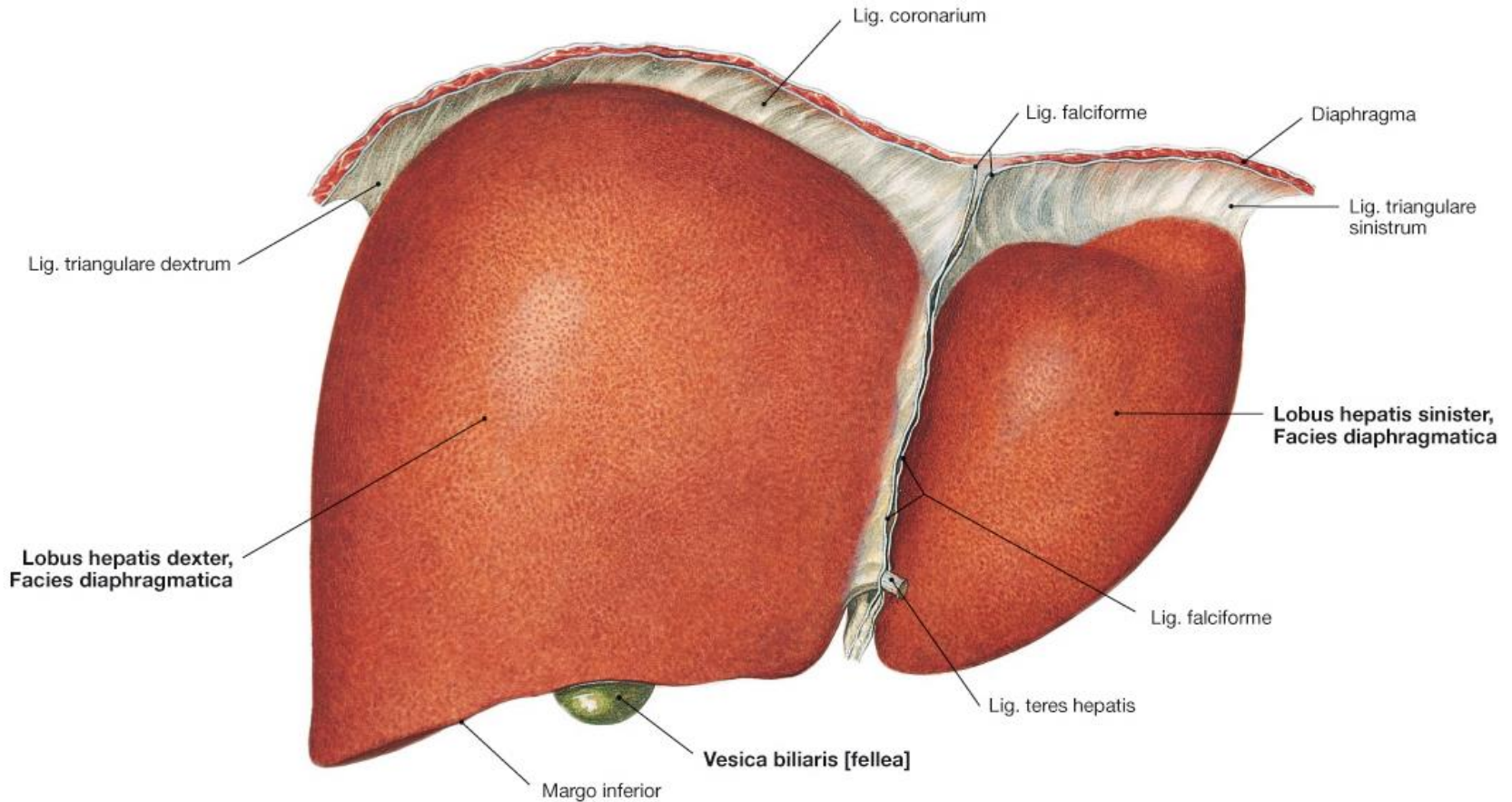






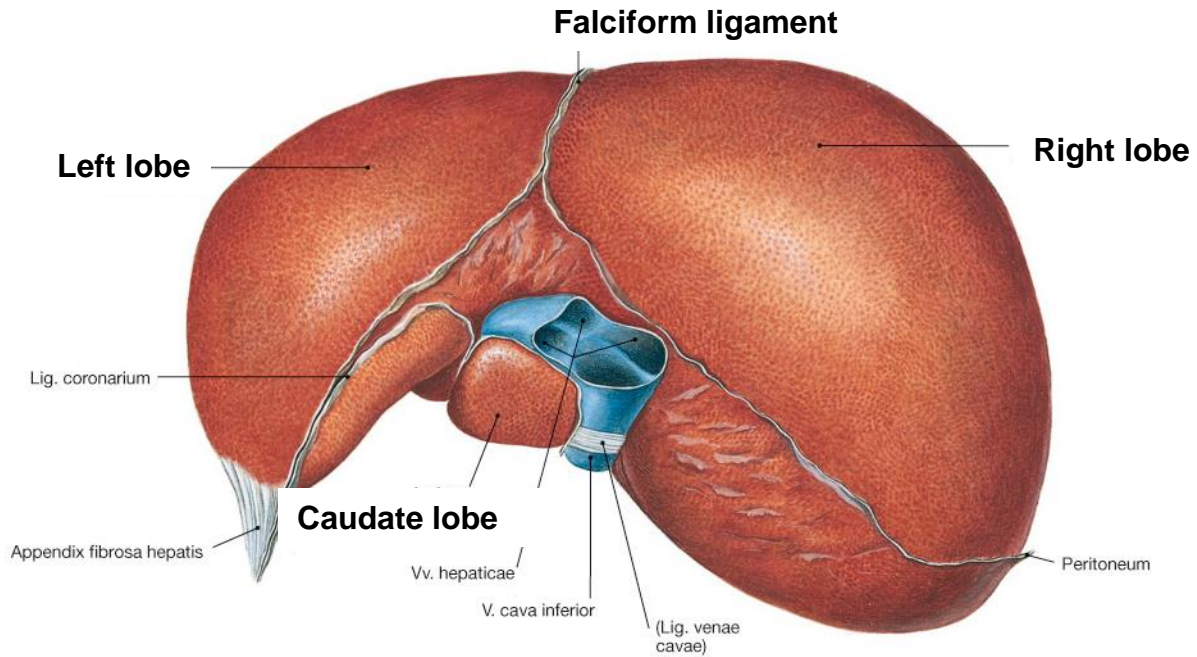


Anterior (Facies Diaphragmatica)

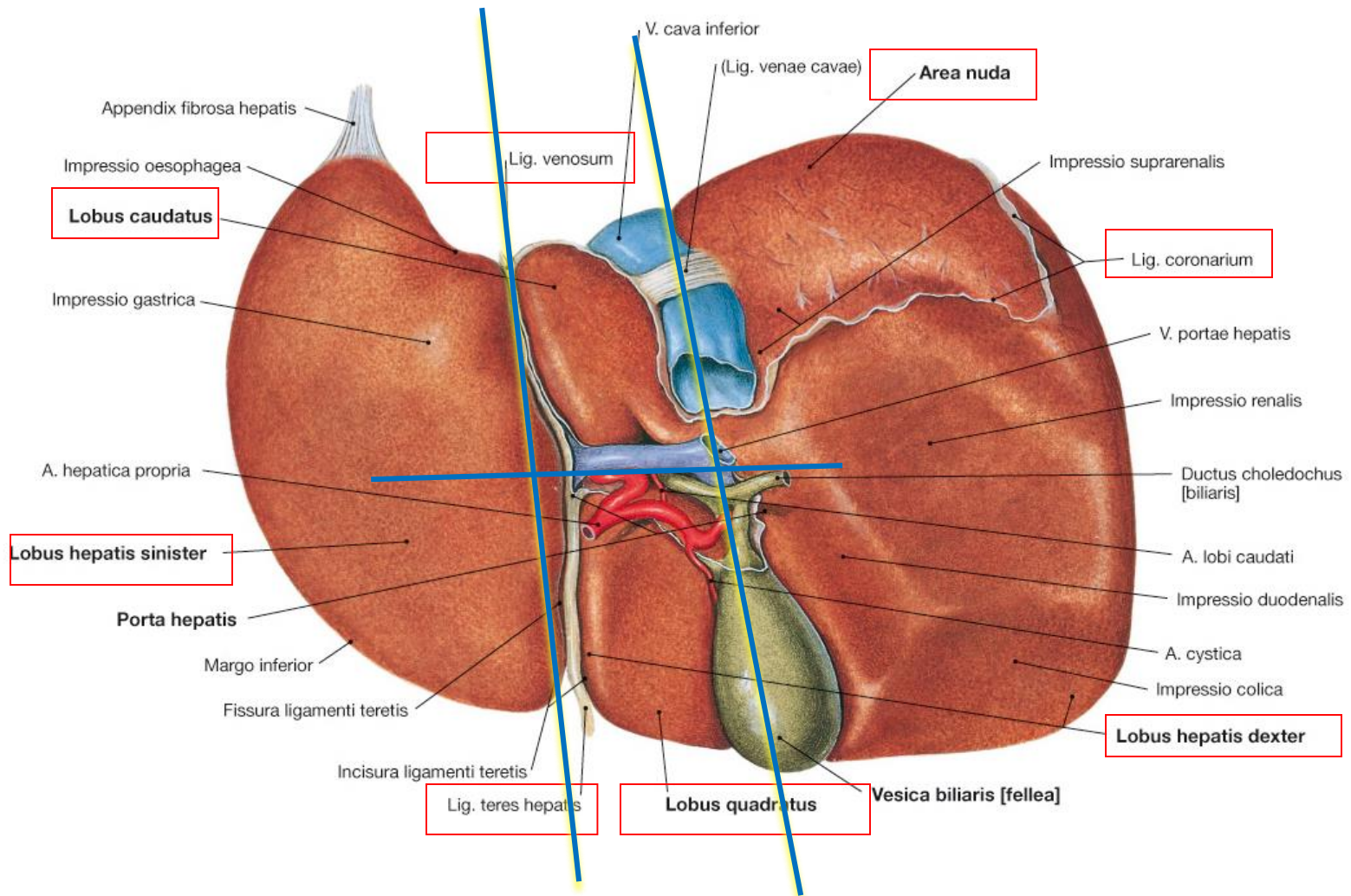


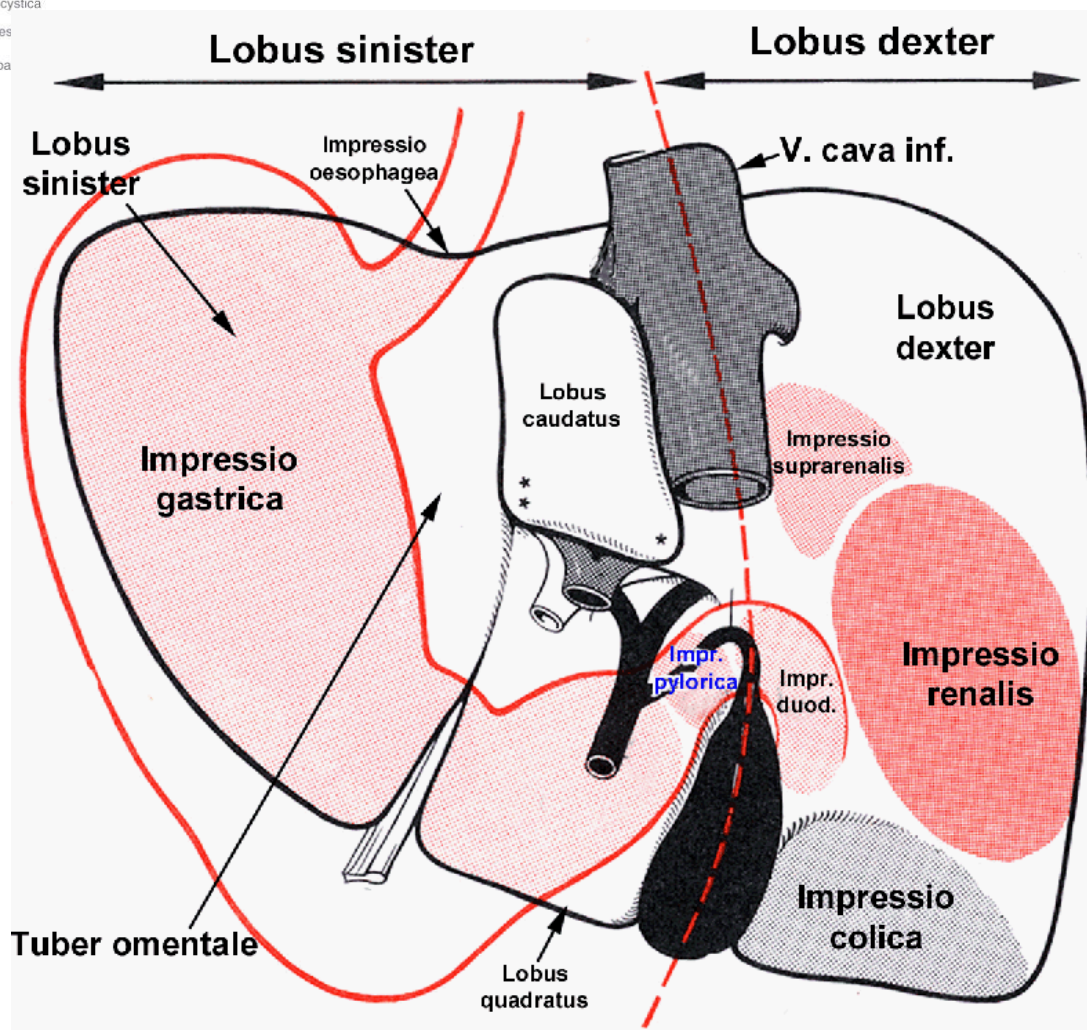
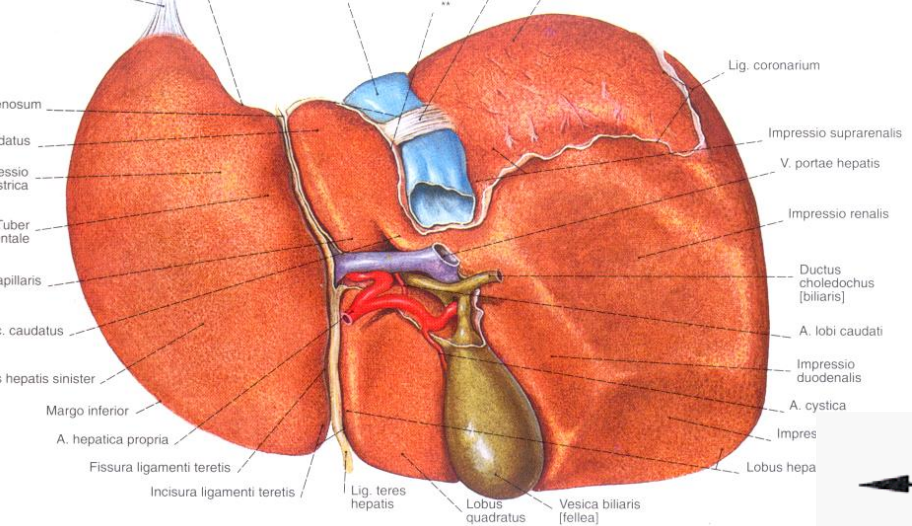
cranial

**Lig. Teres
hepatis**

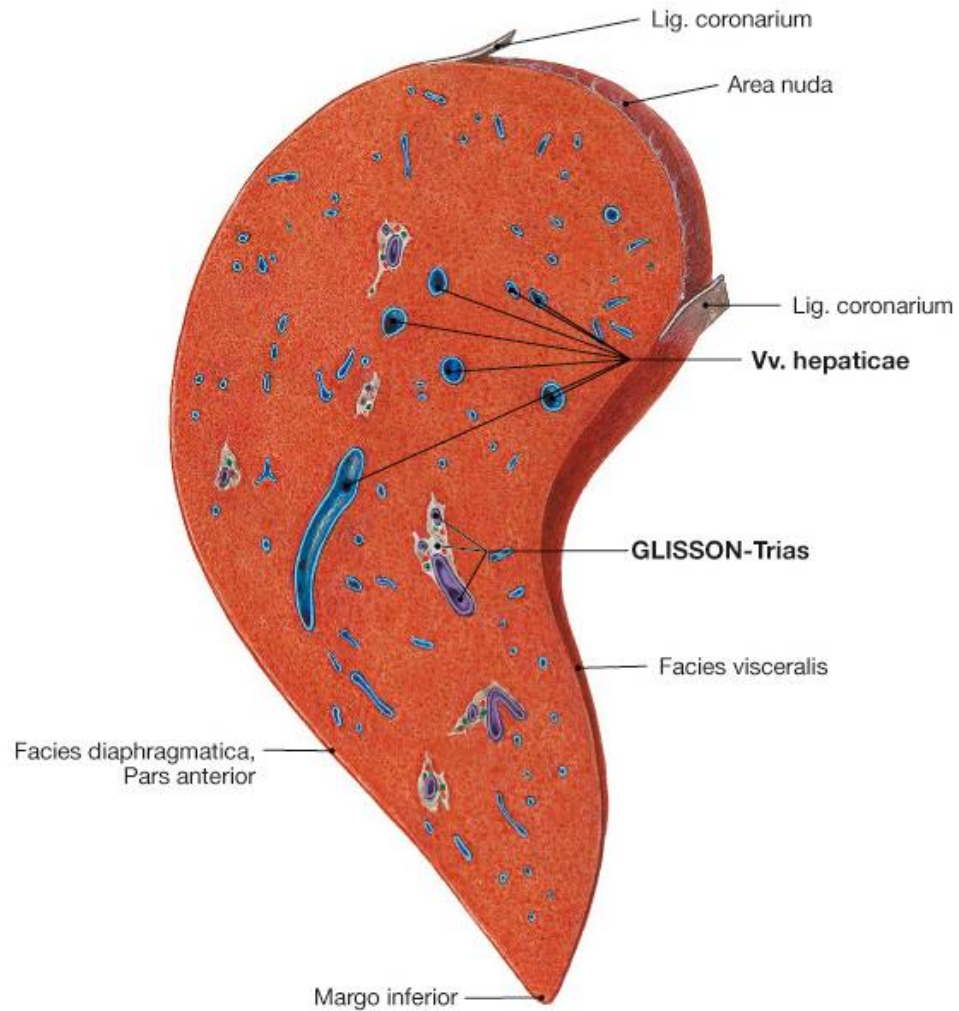


Posterior (facies visceralis)



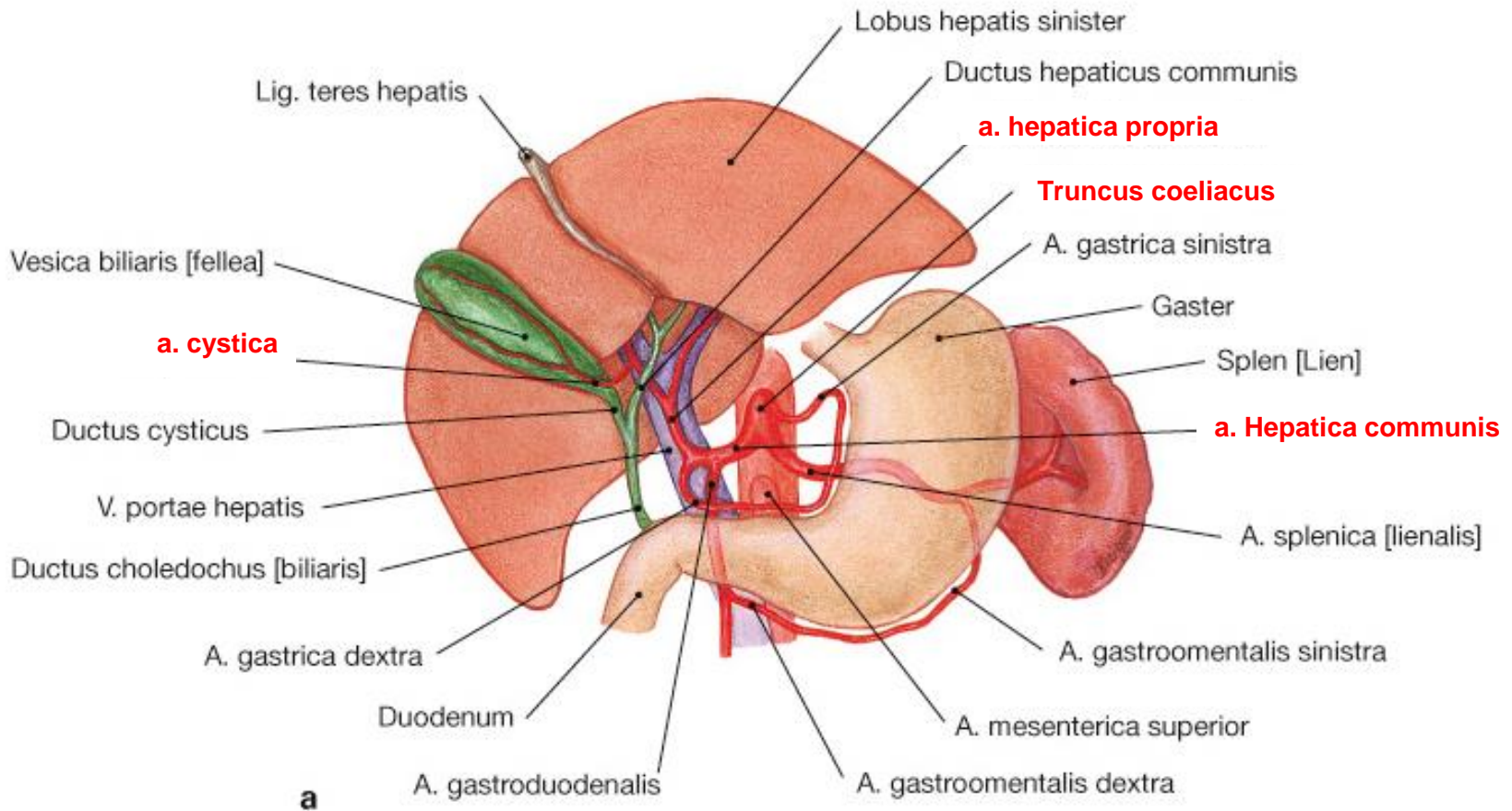


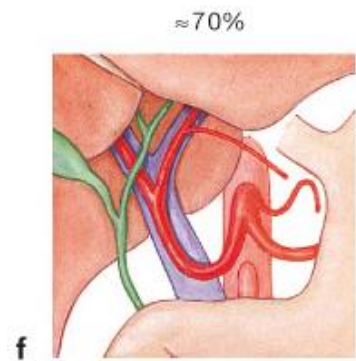
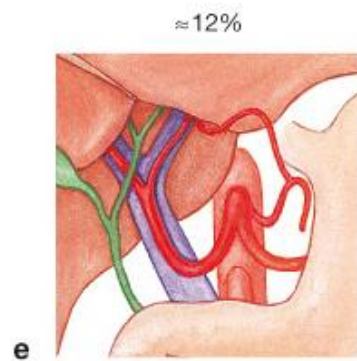
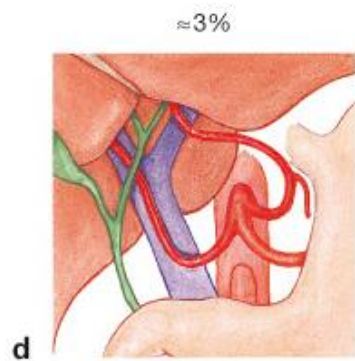
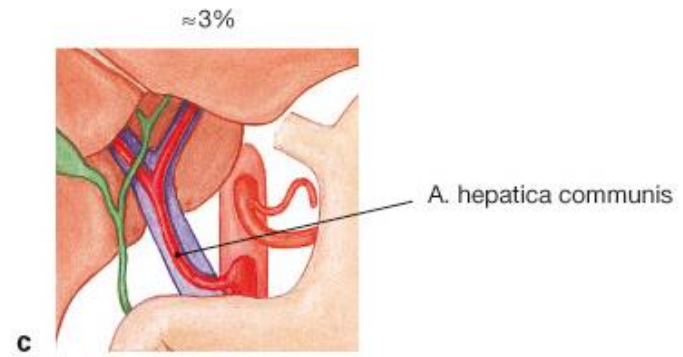
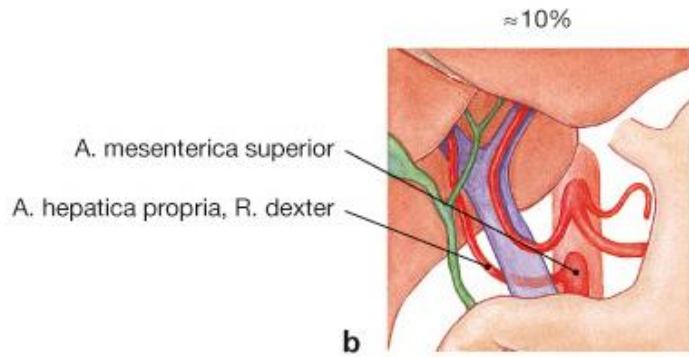
sagittalis



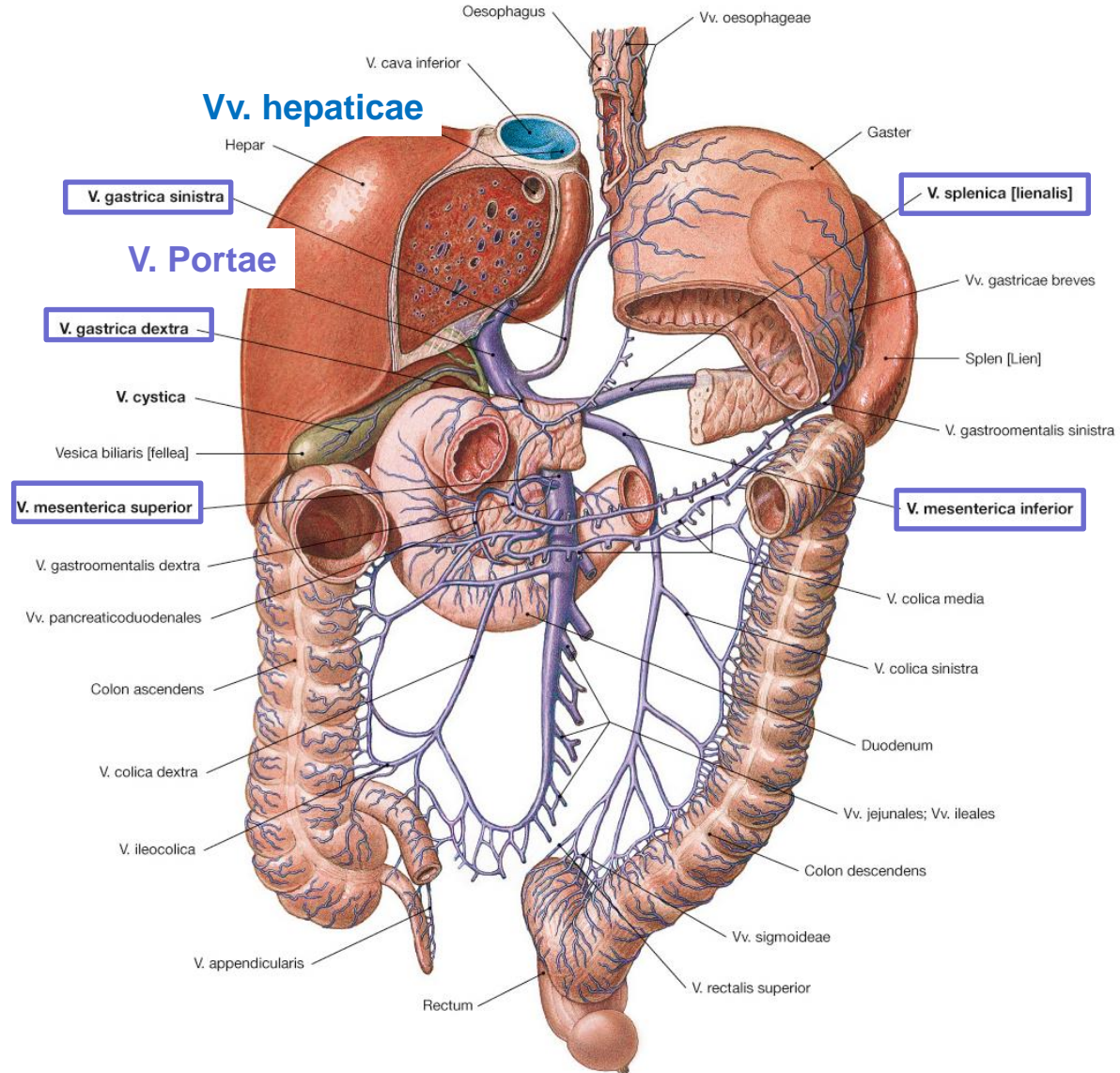
A máj és epehólyag vérellátása

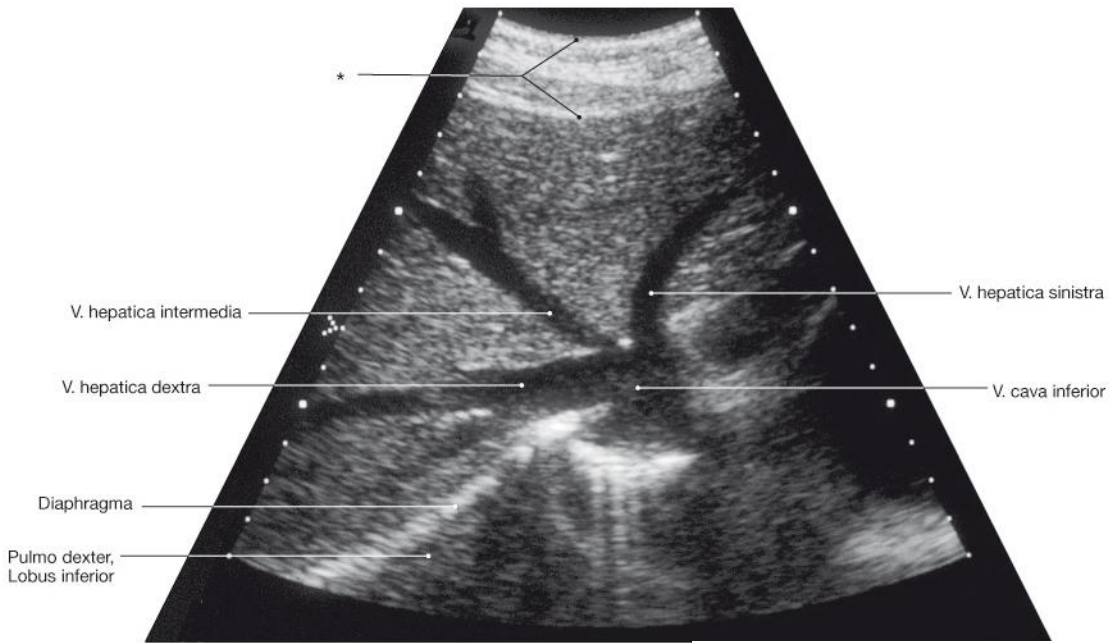
≈ 50%



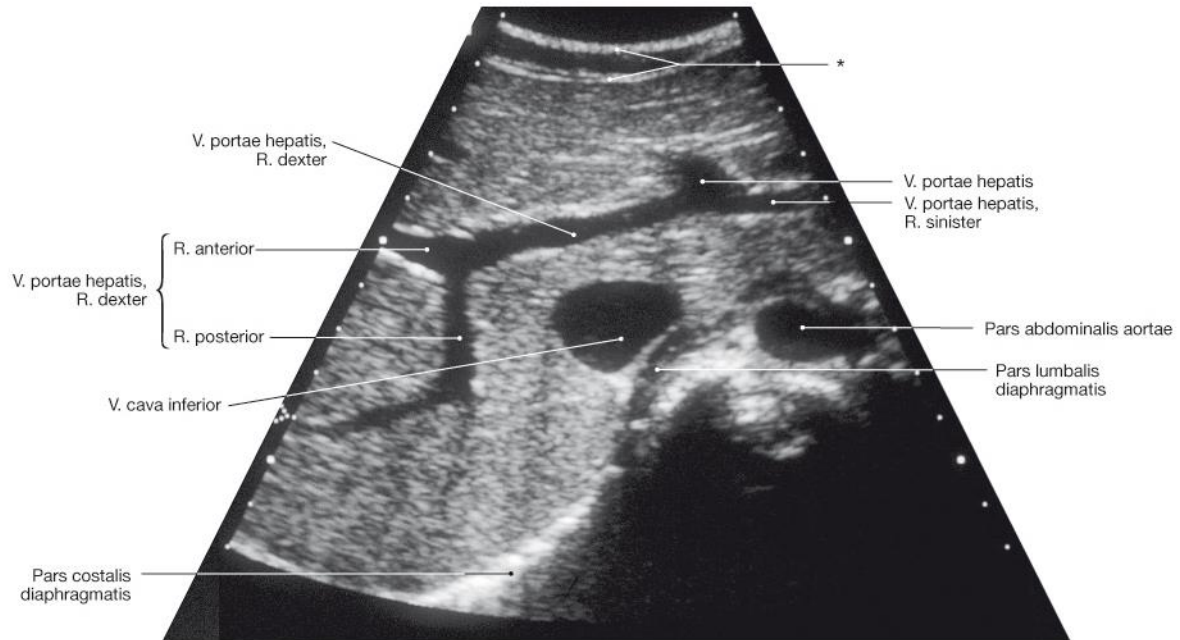


Vena portae



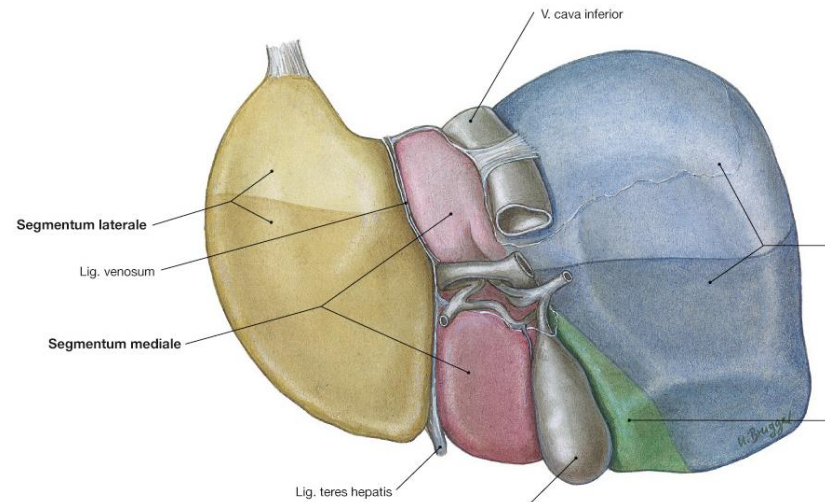
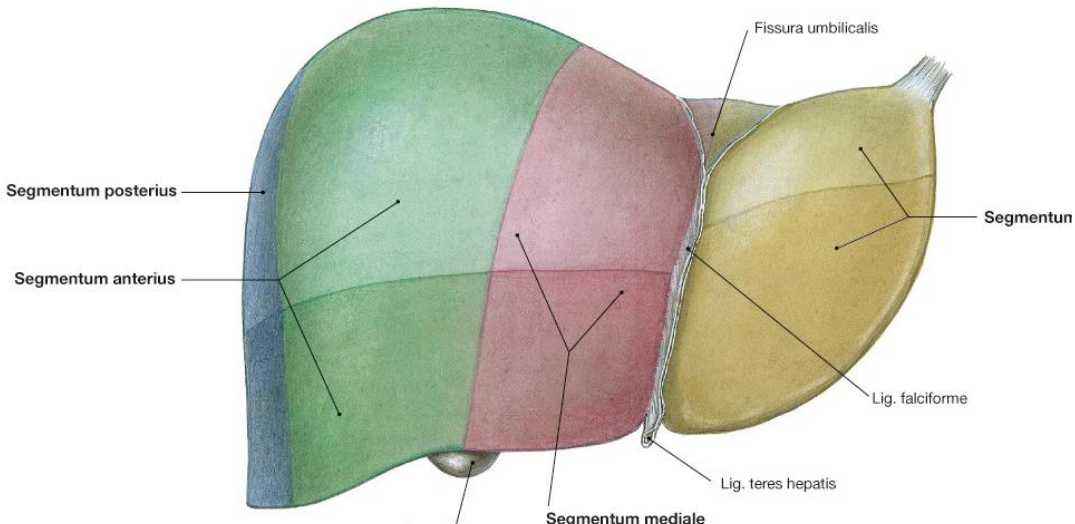
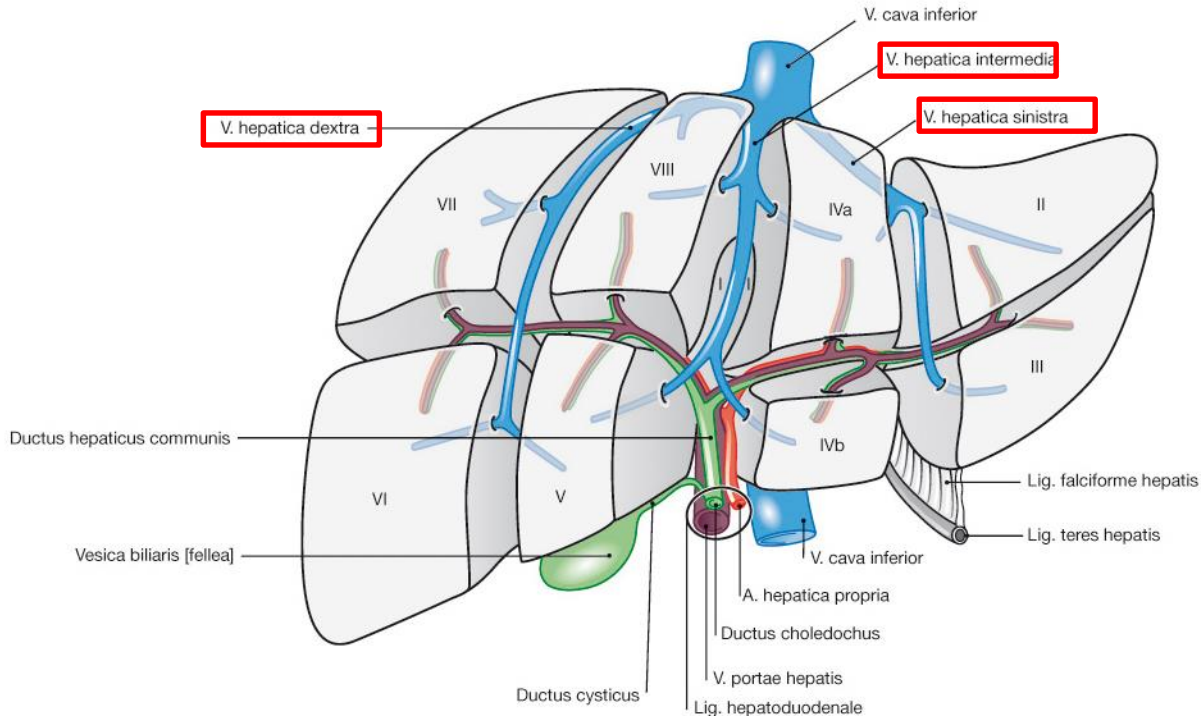


Sobotta – Atlas der Anatomie des Menschen, 23. A. 2010, ©

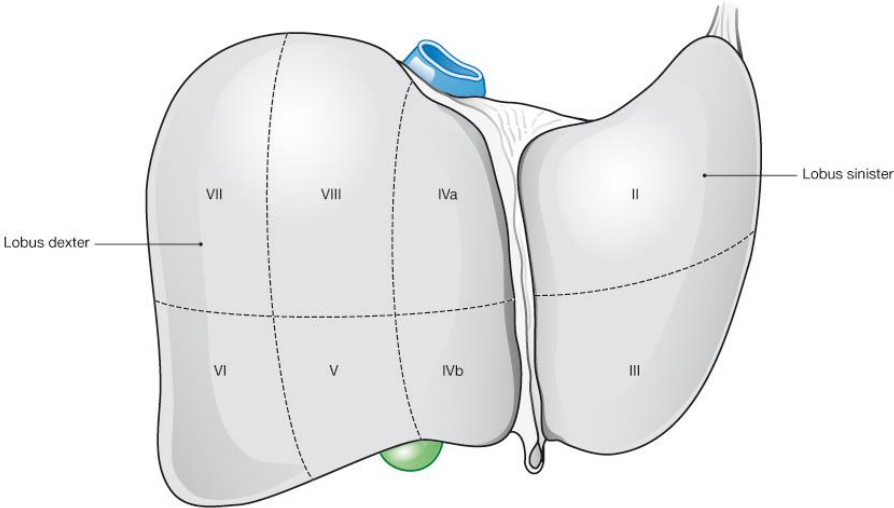


Sobotta – Atlas der Anatomie des Menschen, 23. A. 2010, © Elsevier GmbH, München

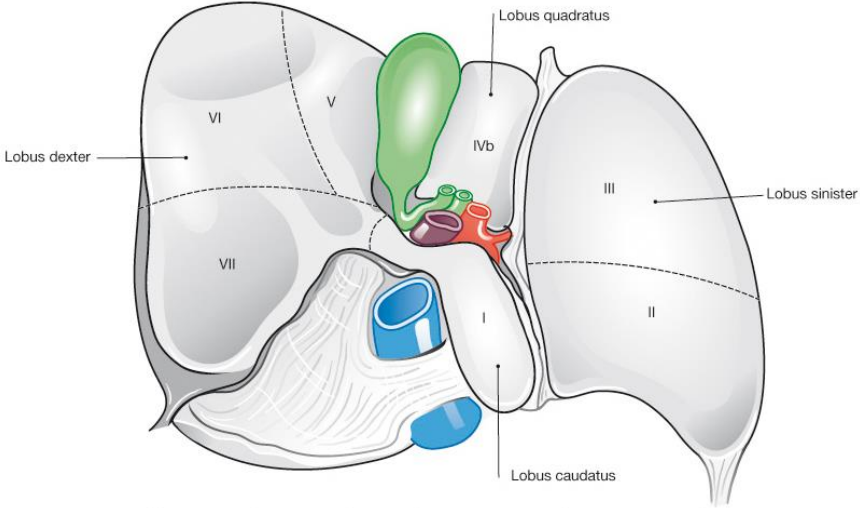
Vv. hepaticae máj segmentumok



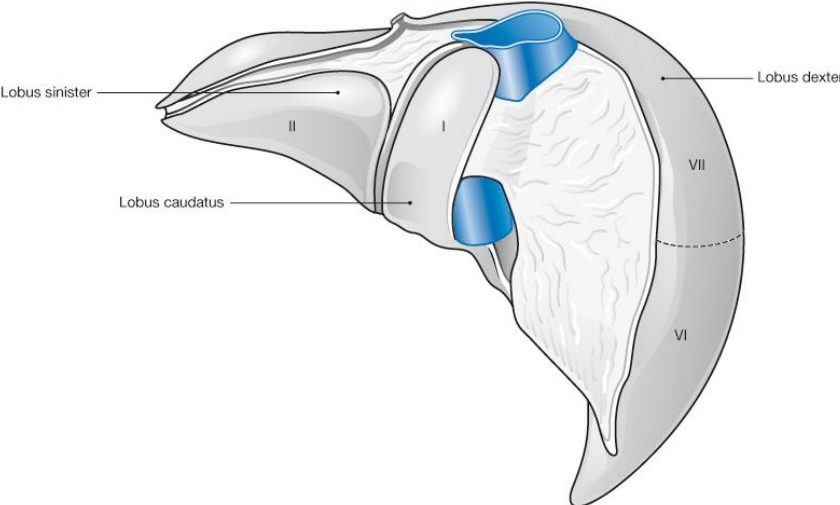
I-VIII segments (supplied by one branch of portal triad)



Sobotta – Atlas der Anatomie des Menschen, 23. A. 2010, © Elsevier GmbH, München



Sobotta – Atlas der Anatomie des Menschen, 23. A. 2010, © Elsevier GmbH, München

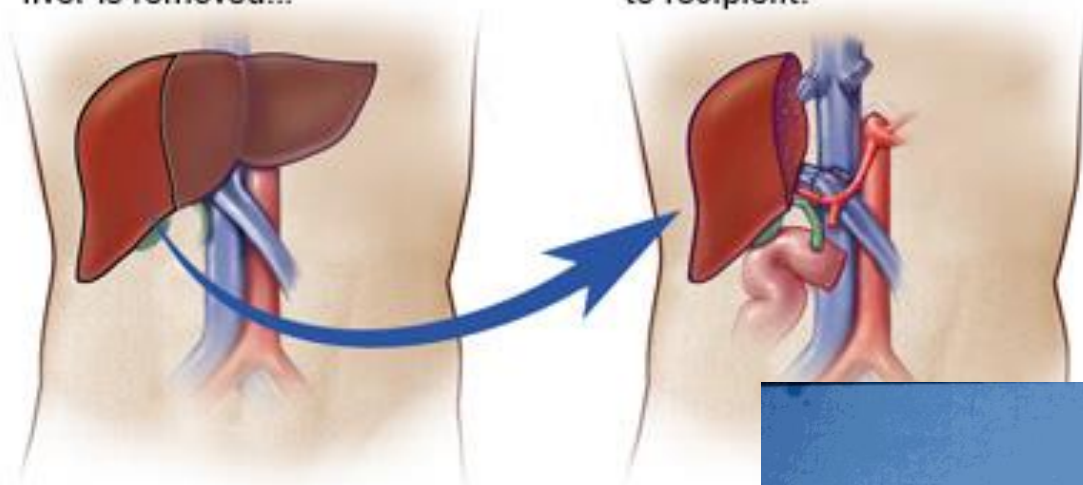


Sobotta – Atlas der Anatomie des Menschen, 23. A. 2010, © Elsevier GmbH, München

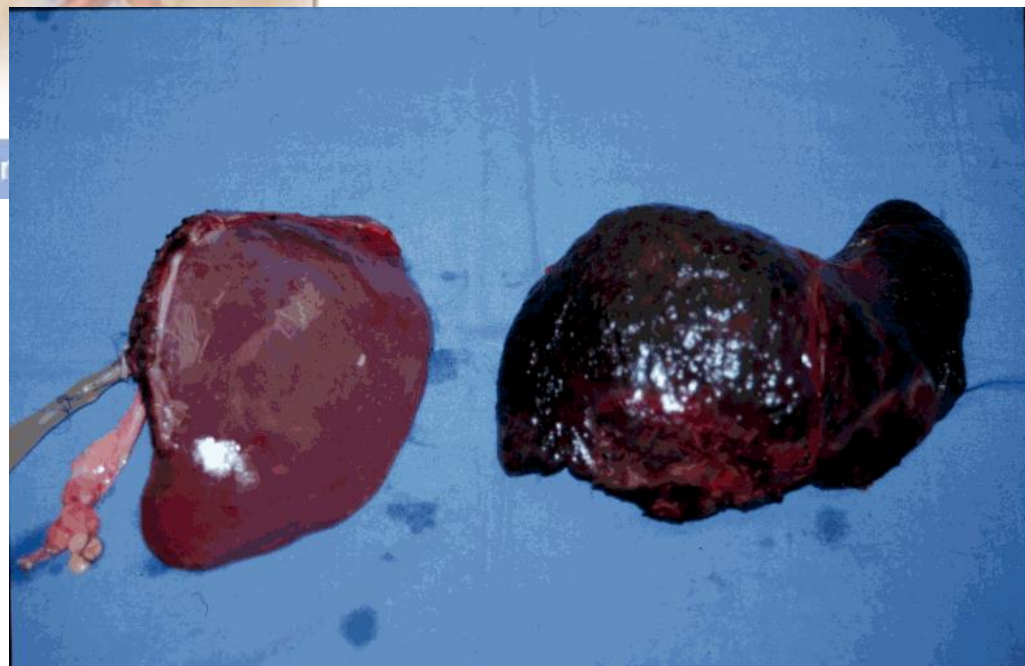
máj transzplantáció

Portion of donor liver is removed...

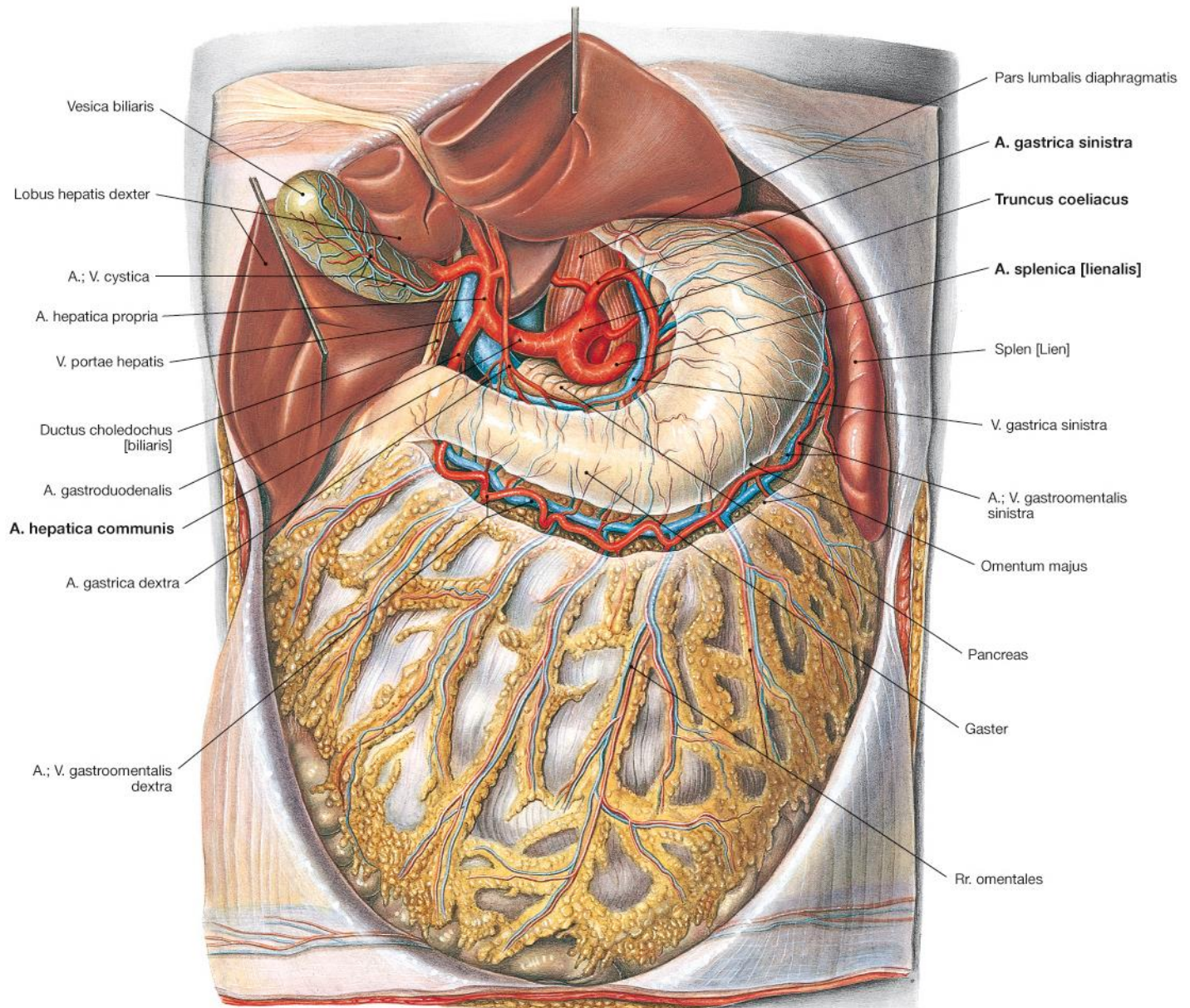
...and transplanted to recipient.

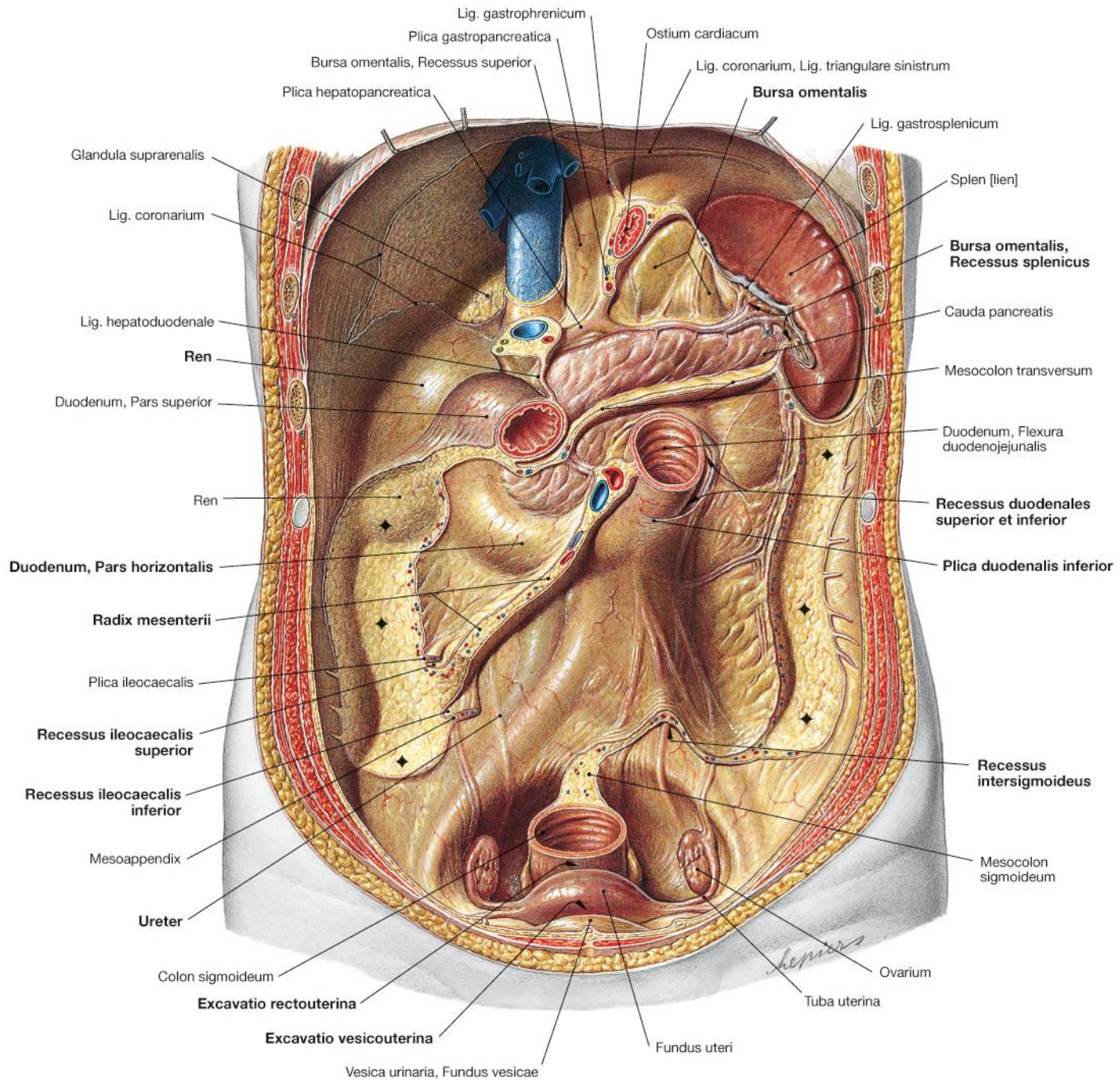


© Mayo Foundation for Medical Education and Research

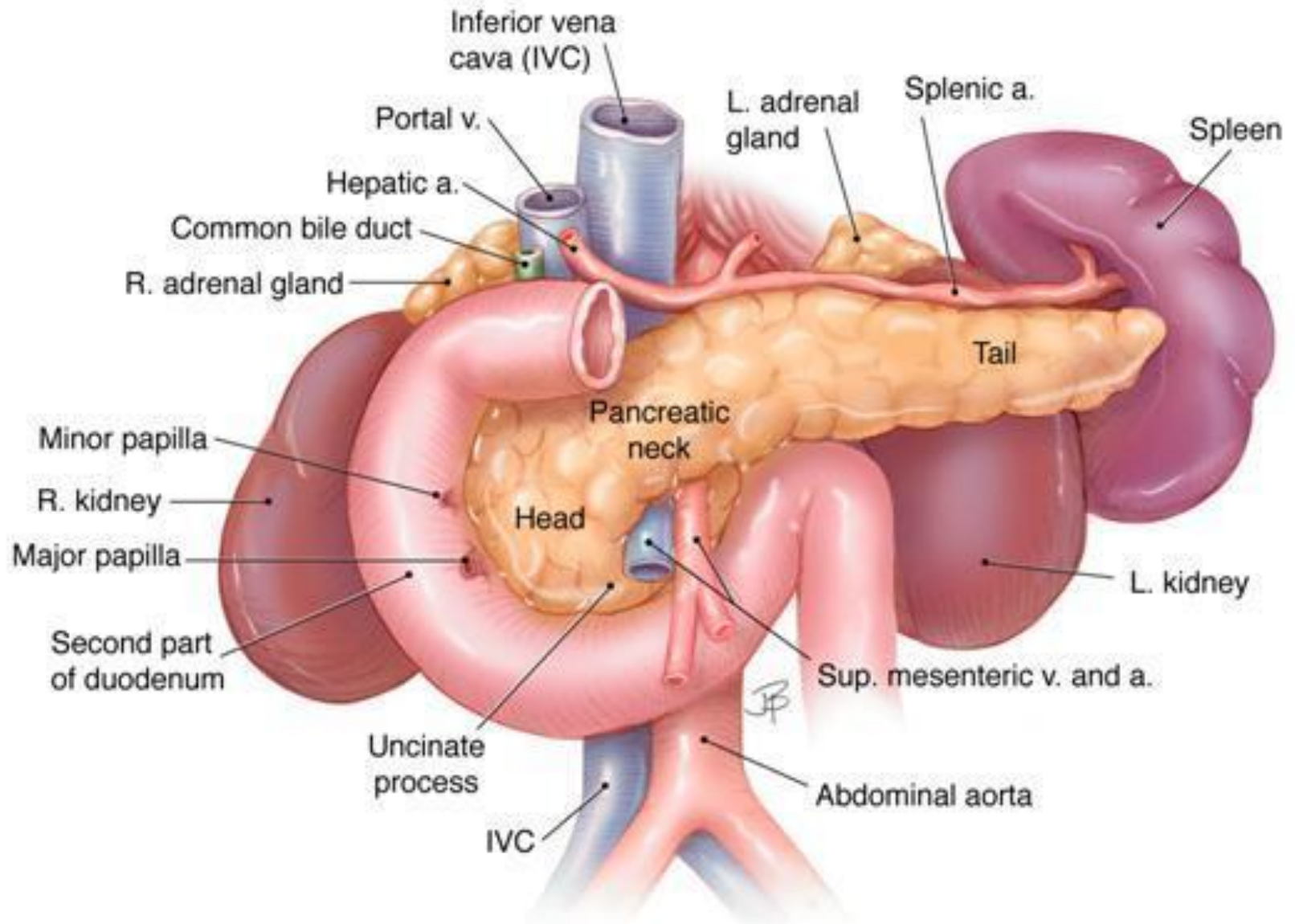


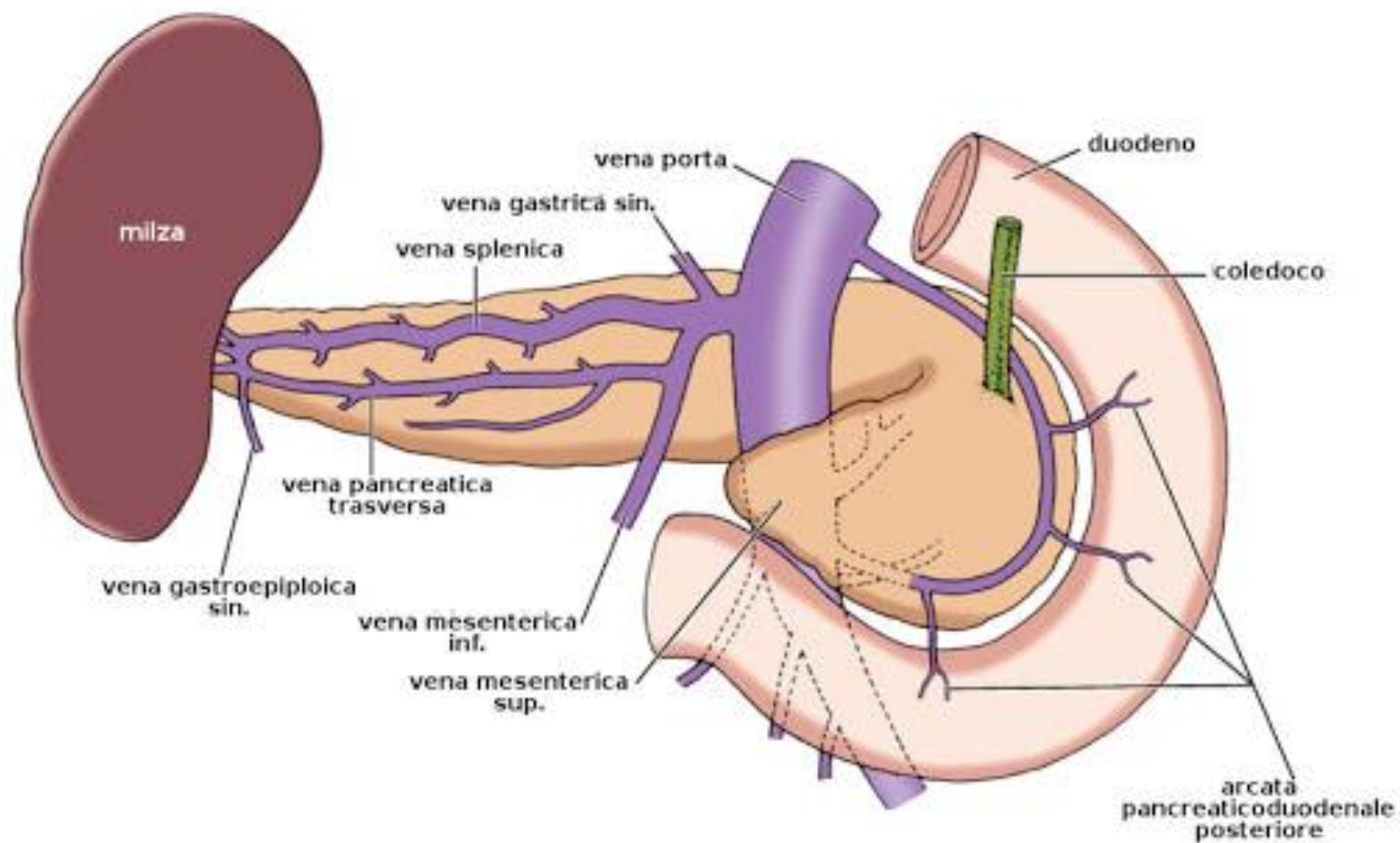
pancreas



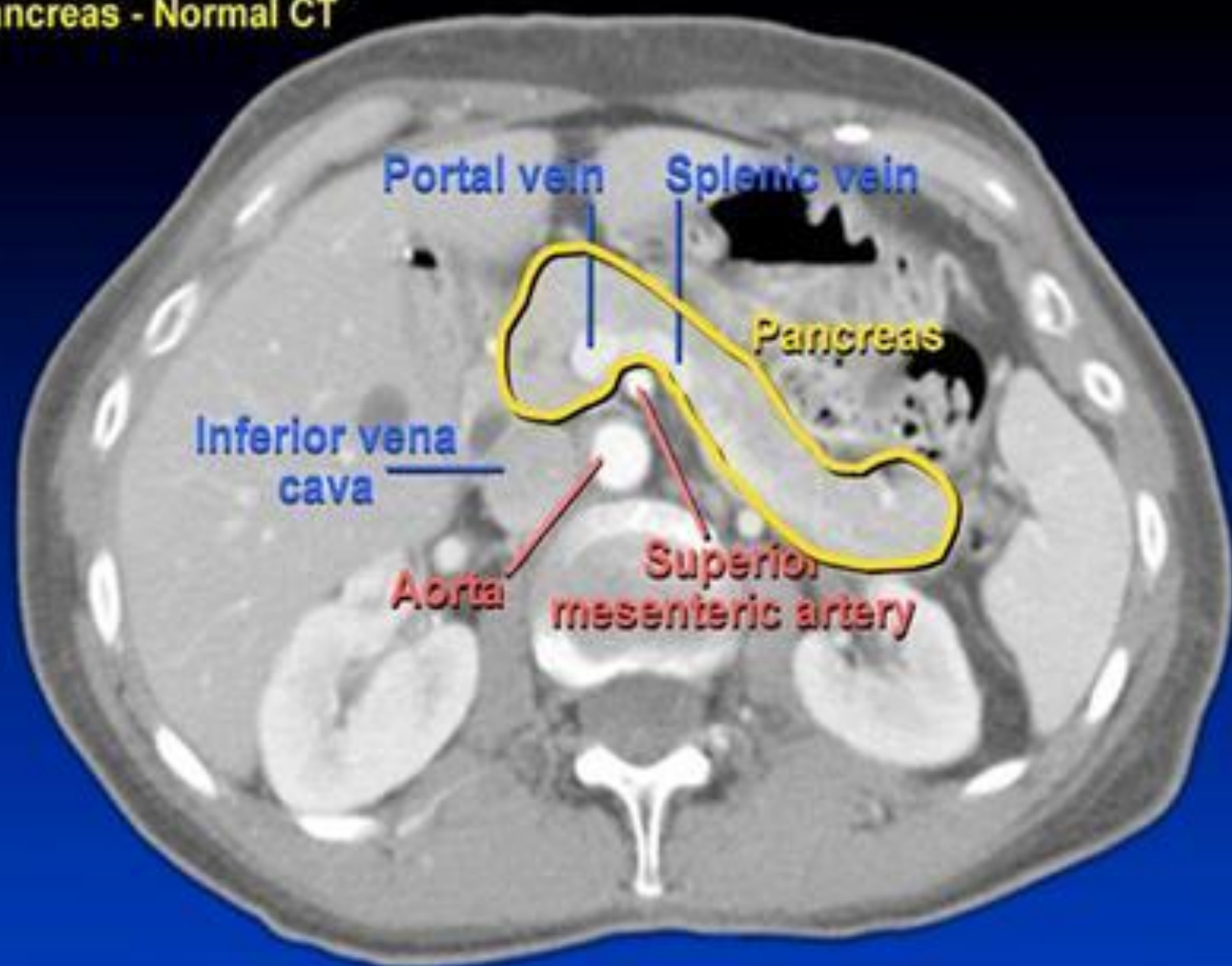


pancreas

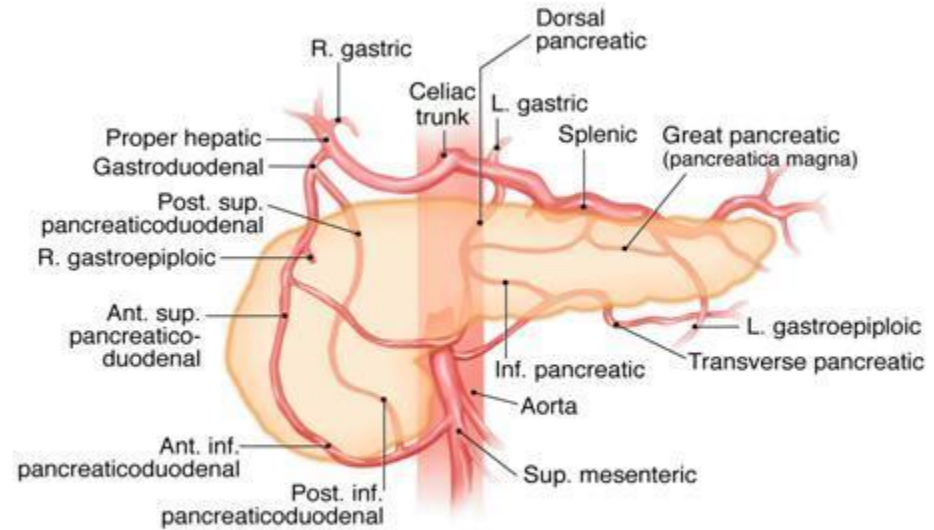




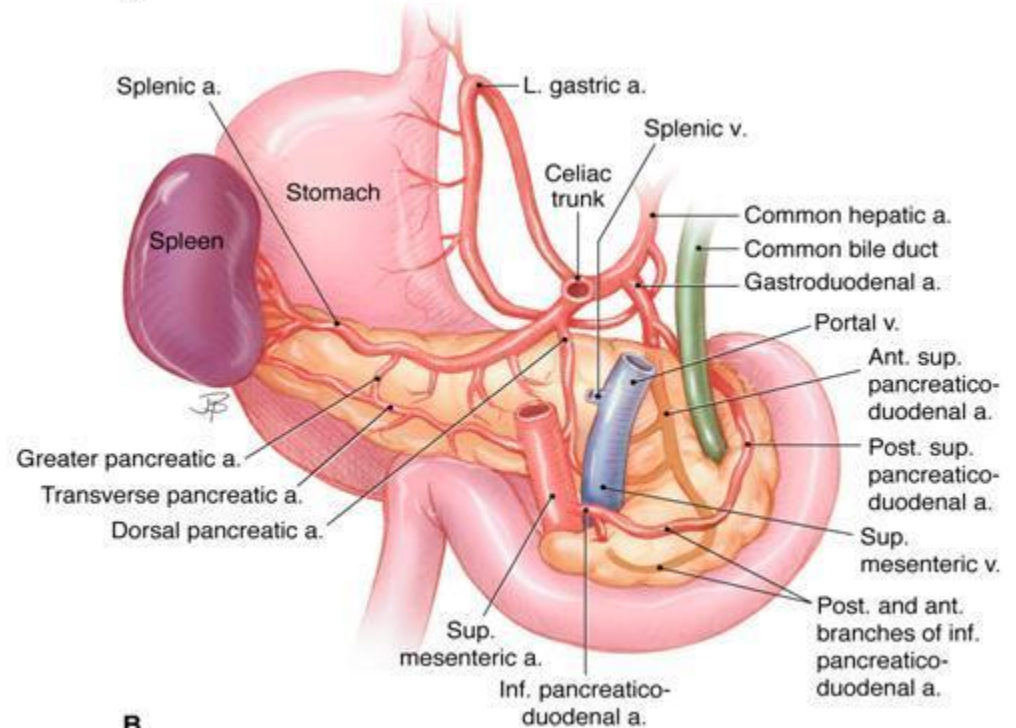
Pancreas - Normal CT



Vérellátás

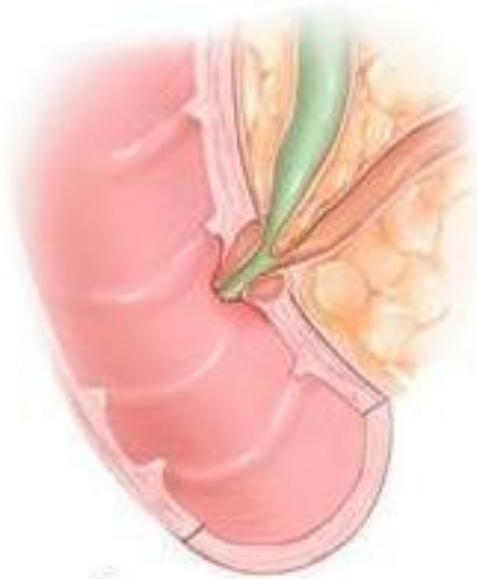


A

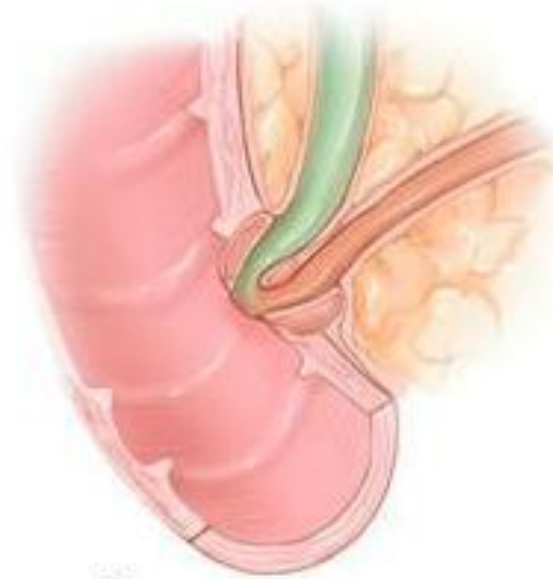


B

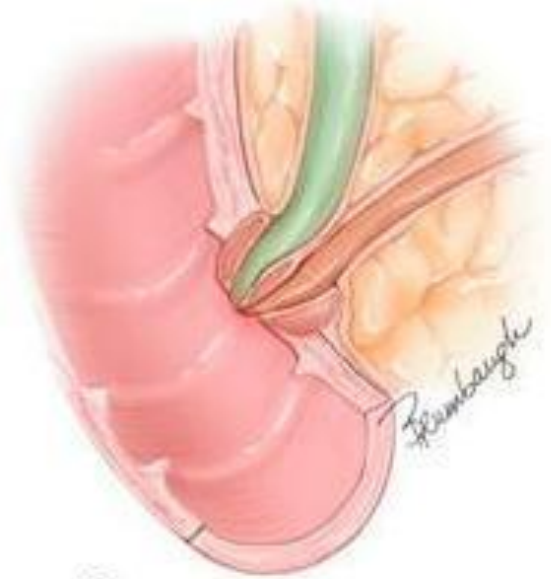
variációk



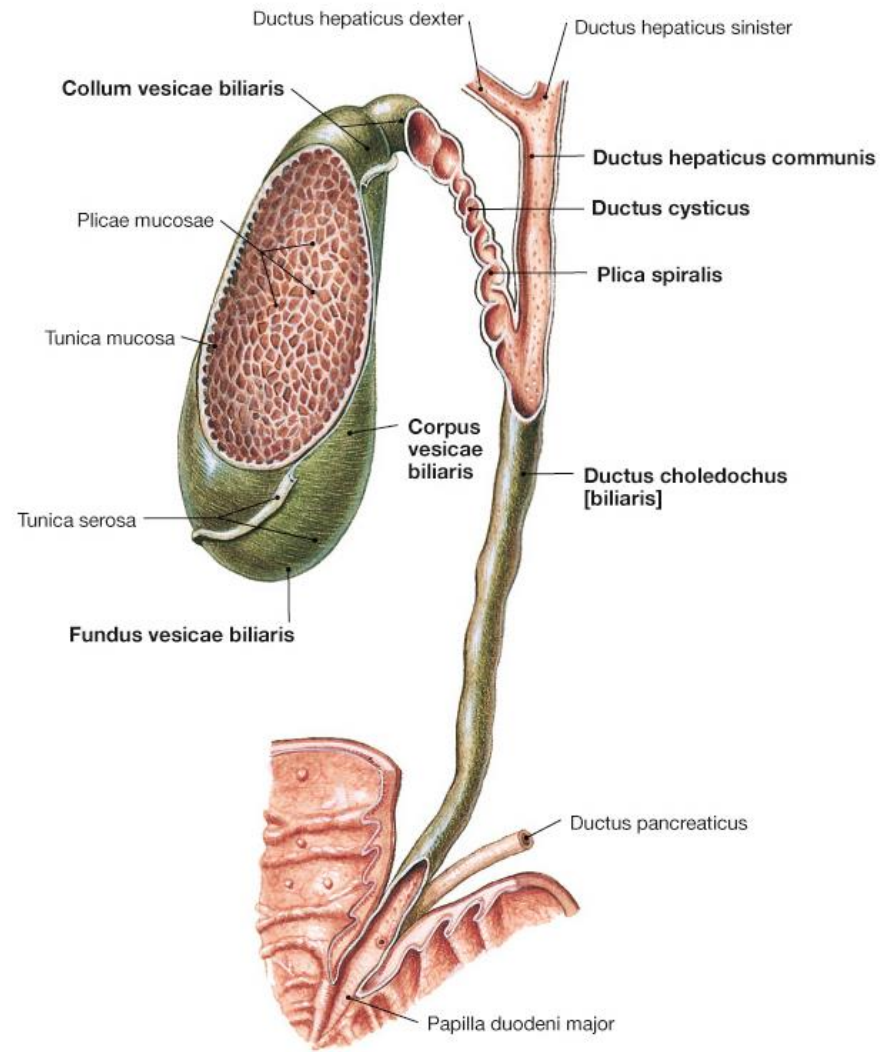
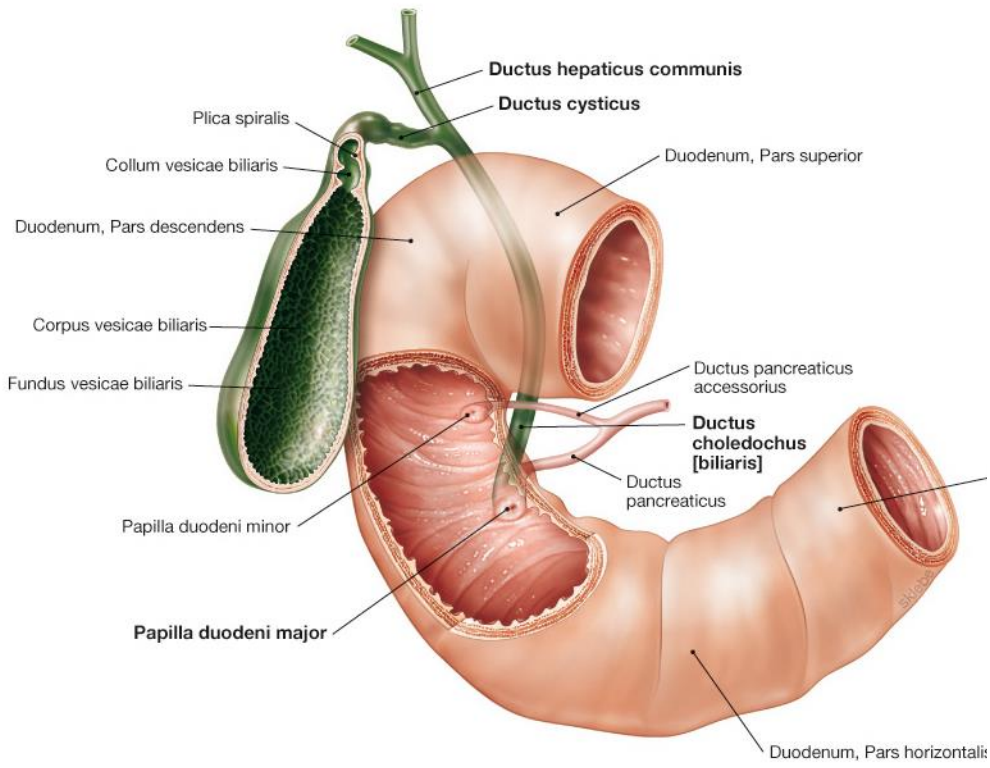
A

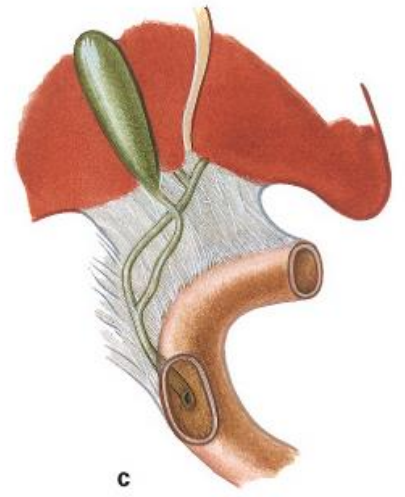
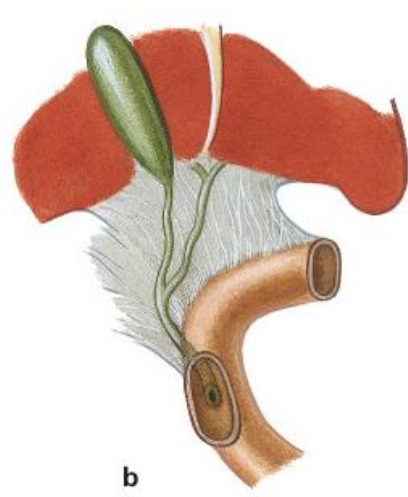
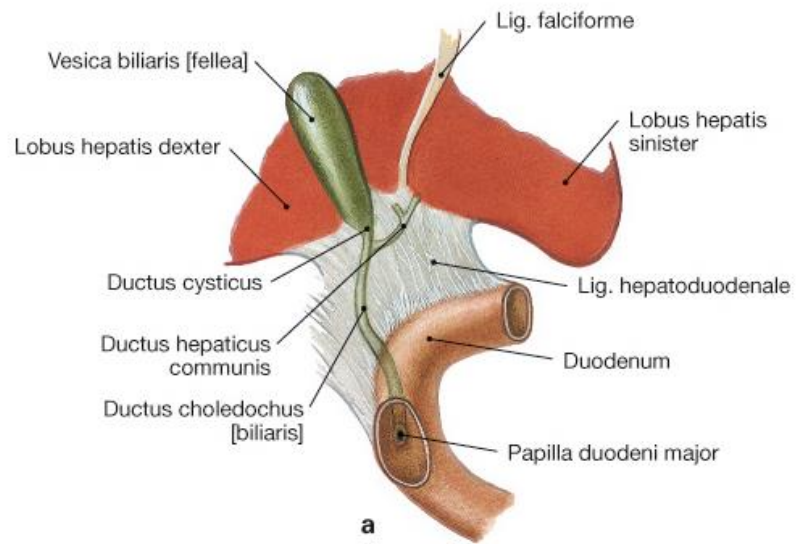


B

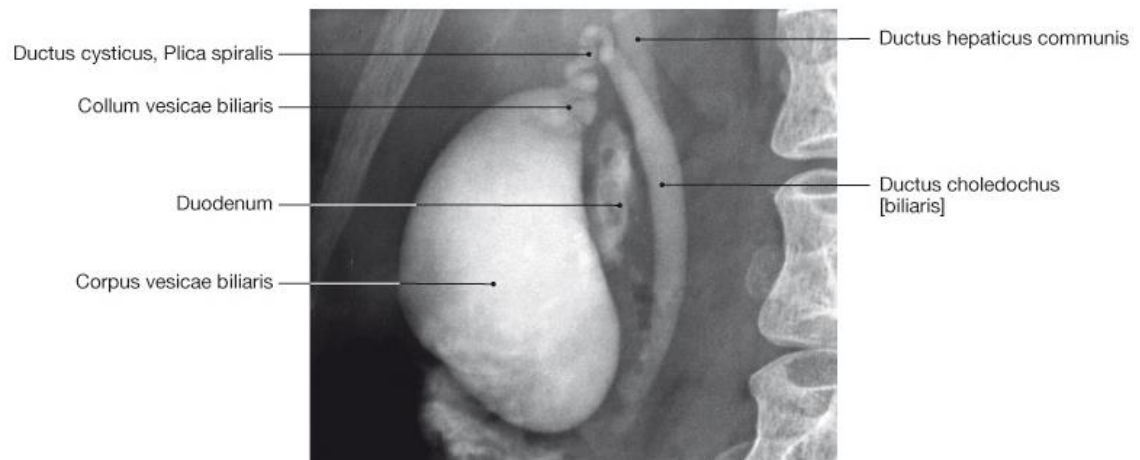
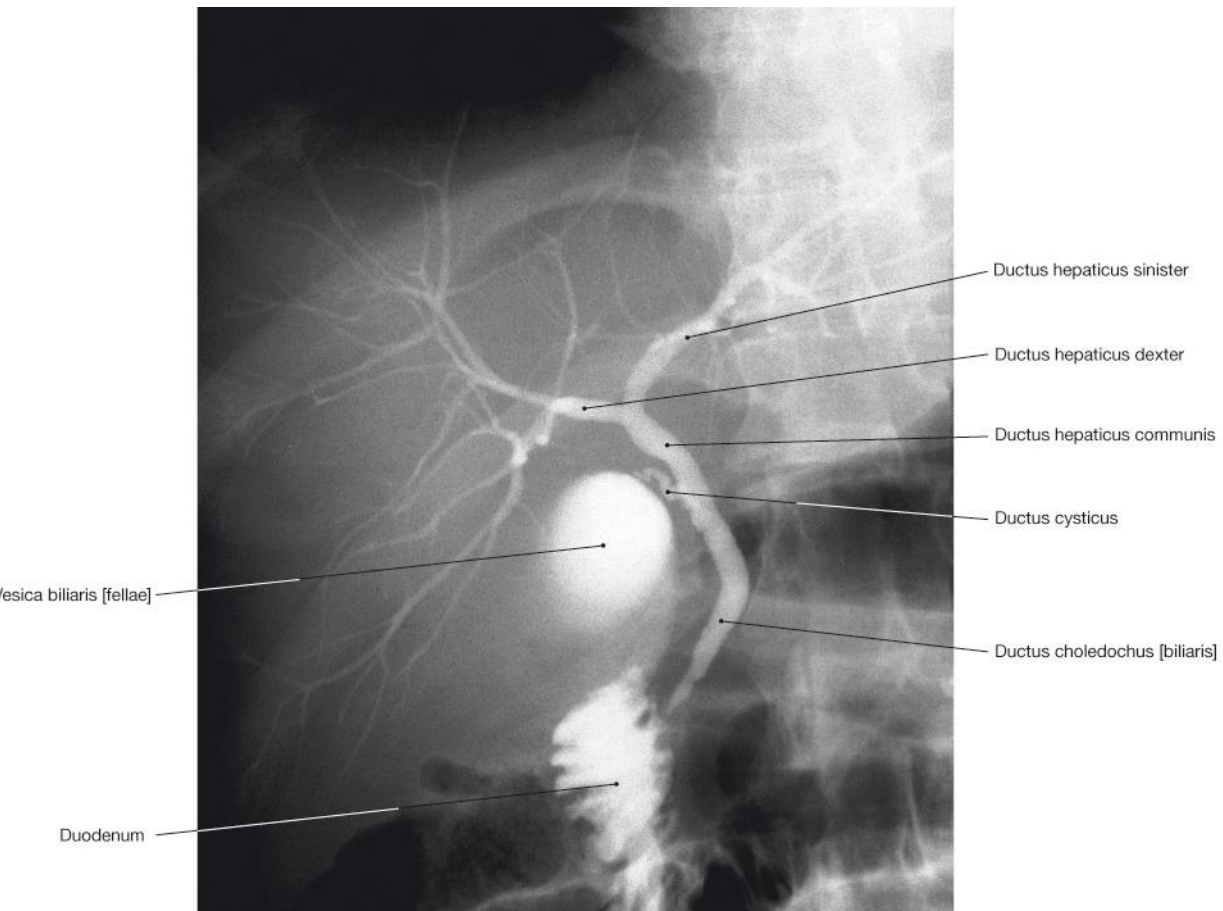


C

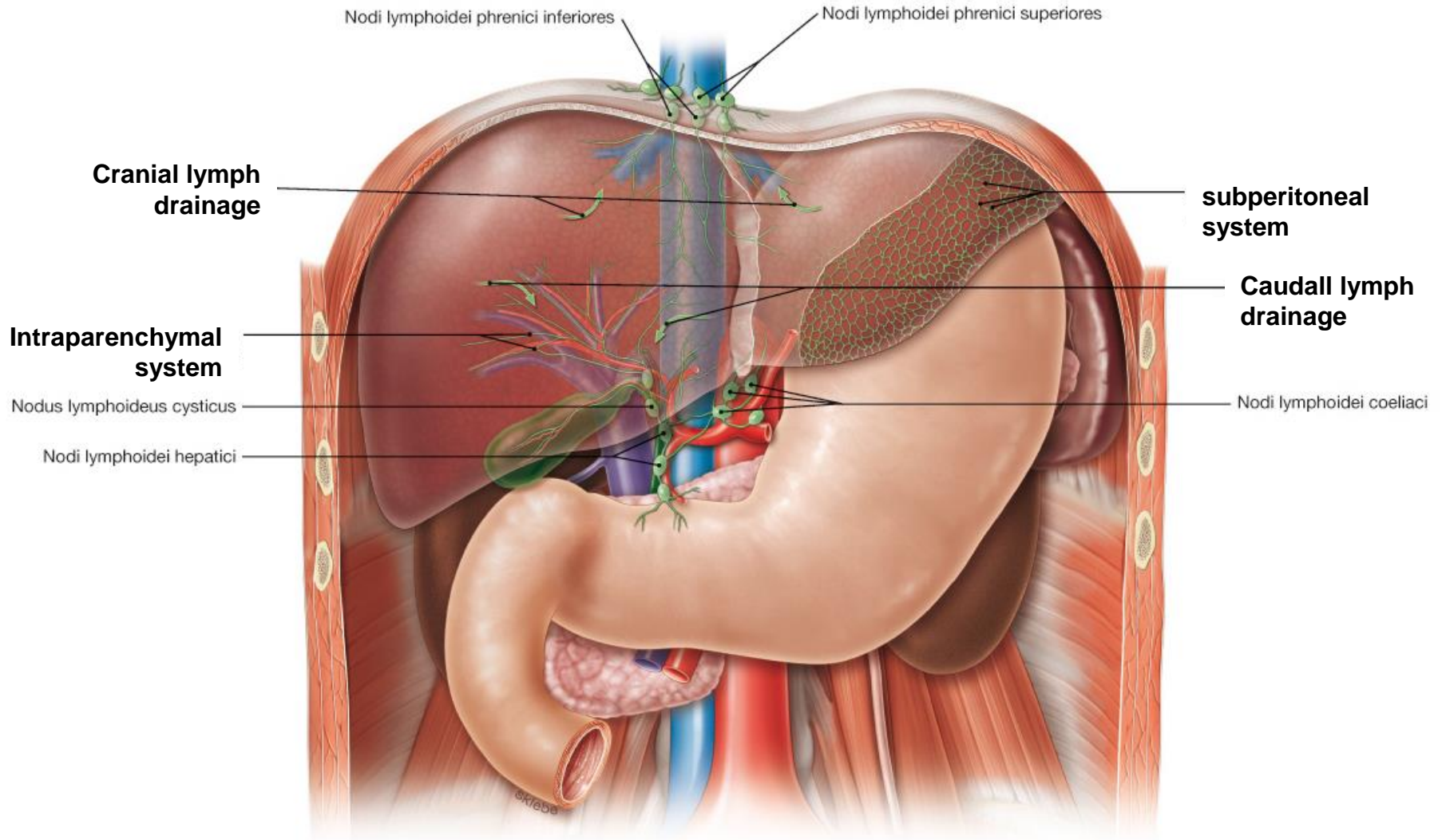




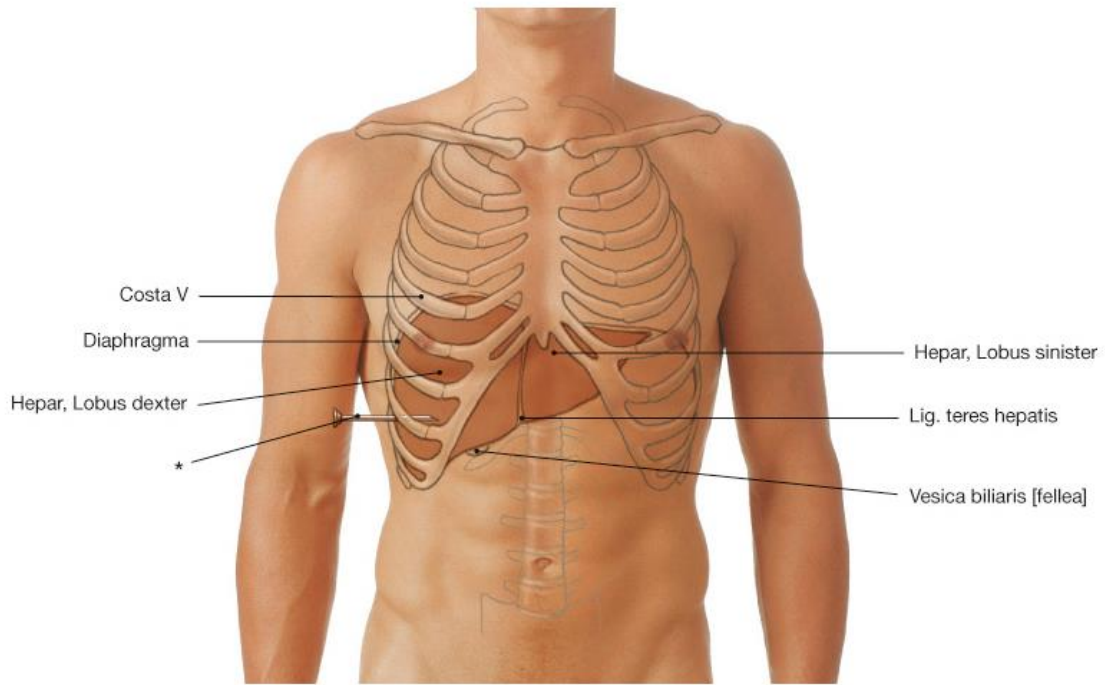
Sobotta – Atlas der Anatomie des Menschen, 23. A. 2010, © Elsevier GmbH, München



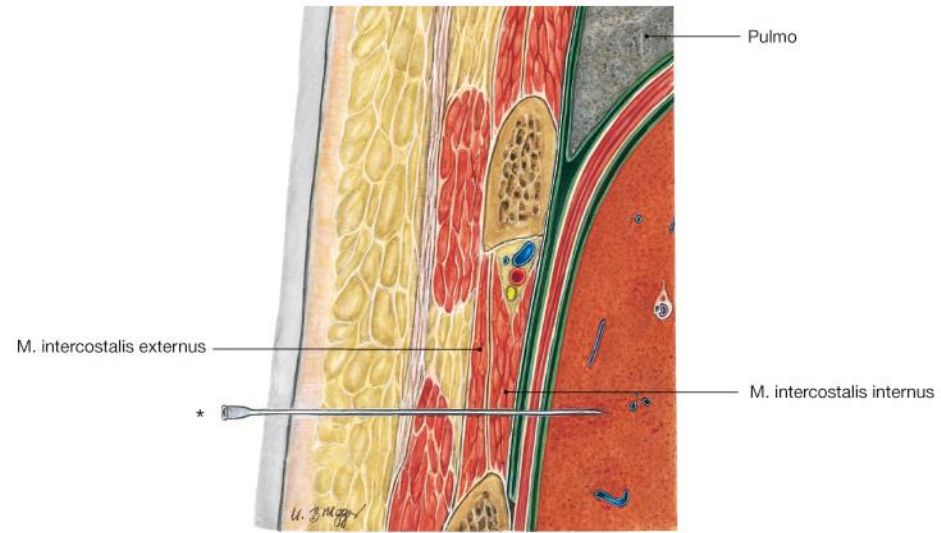
Nyirok elvezetés



Máj biopszia

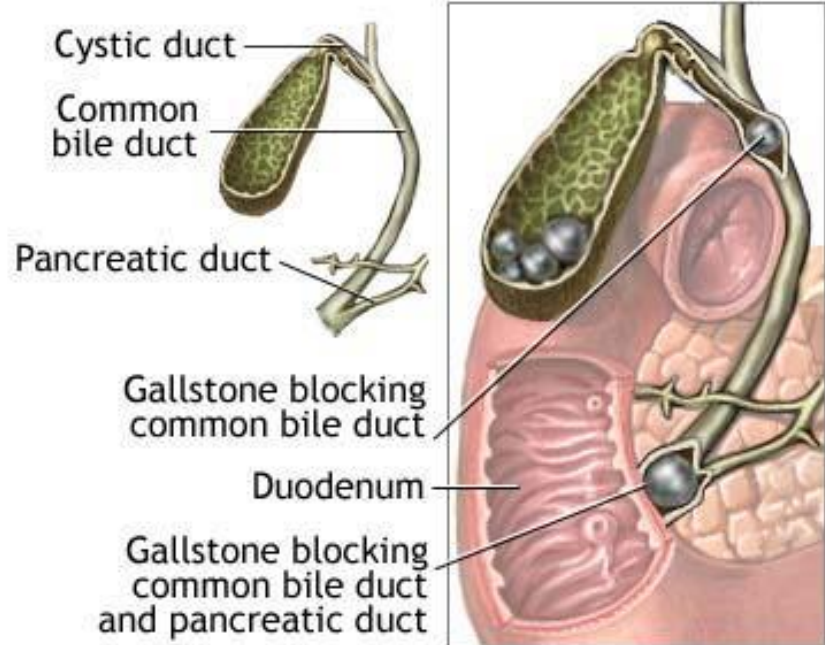
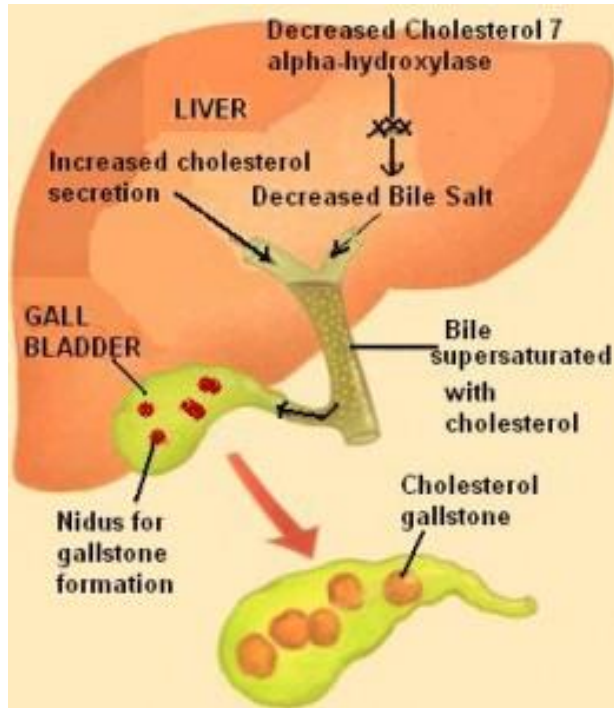


Sobotta – Atlas der Anatomie des Menschen, 23. A. 2010, © Elsevier GmbH, Münche



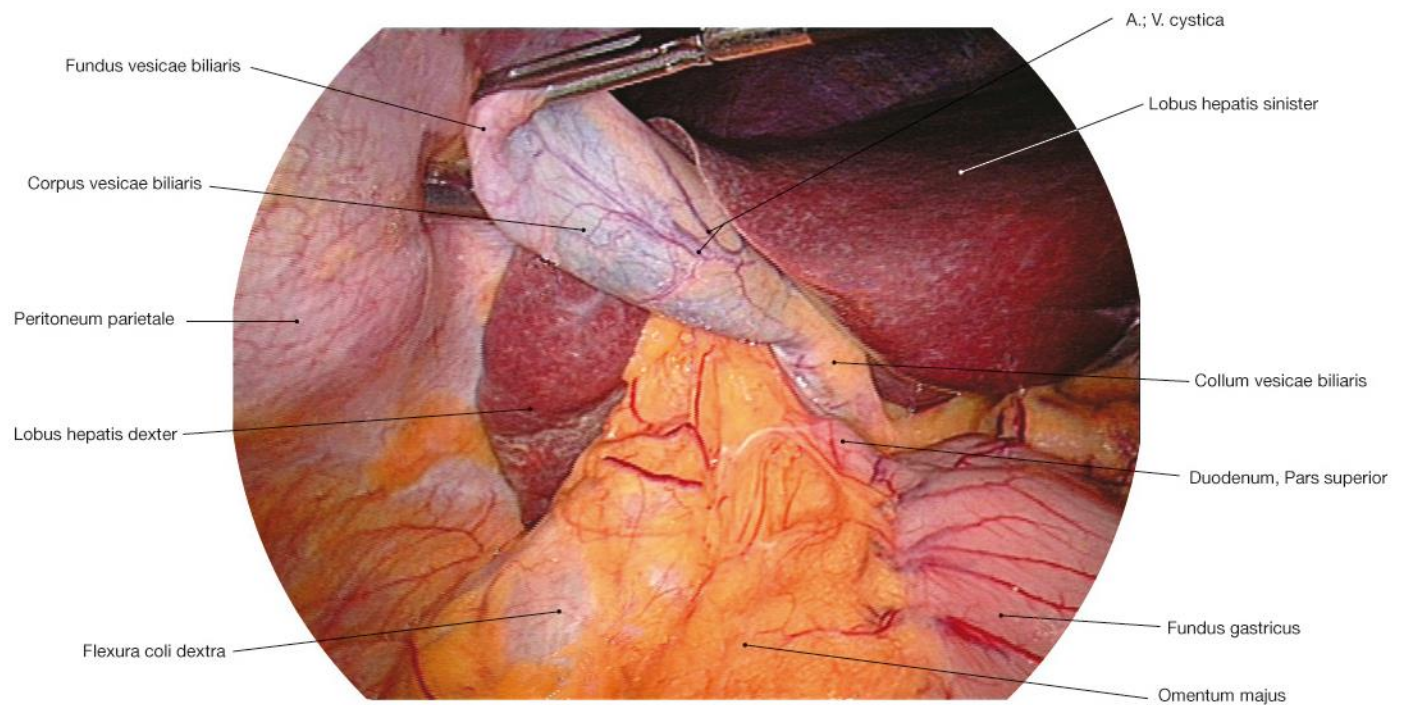
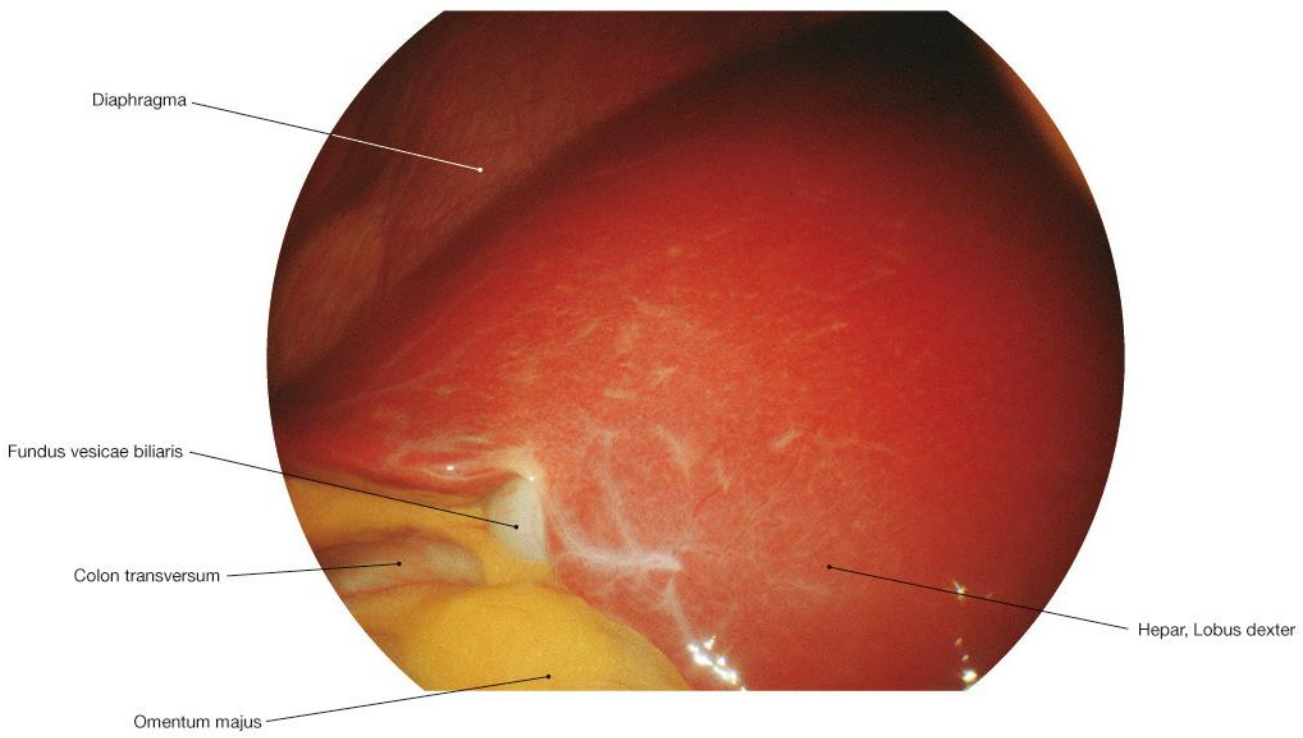
Sobotta – Atlas der Anatomie des Menschen, 23. A. 2010, © Elsevier GmbH, München

Cholelithiasis (epekö)

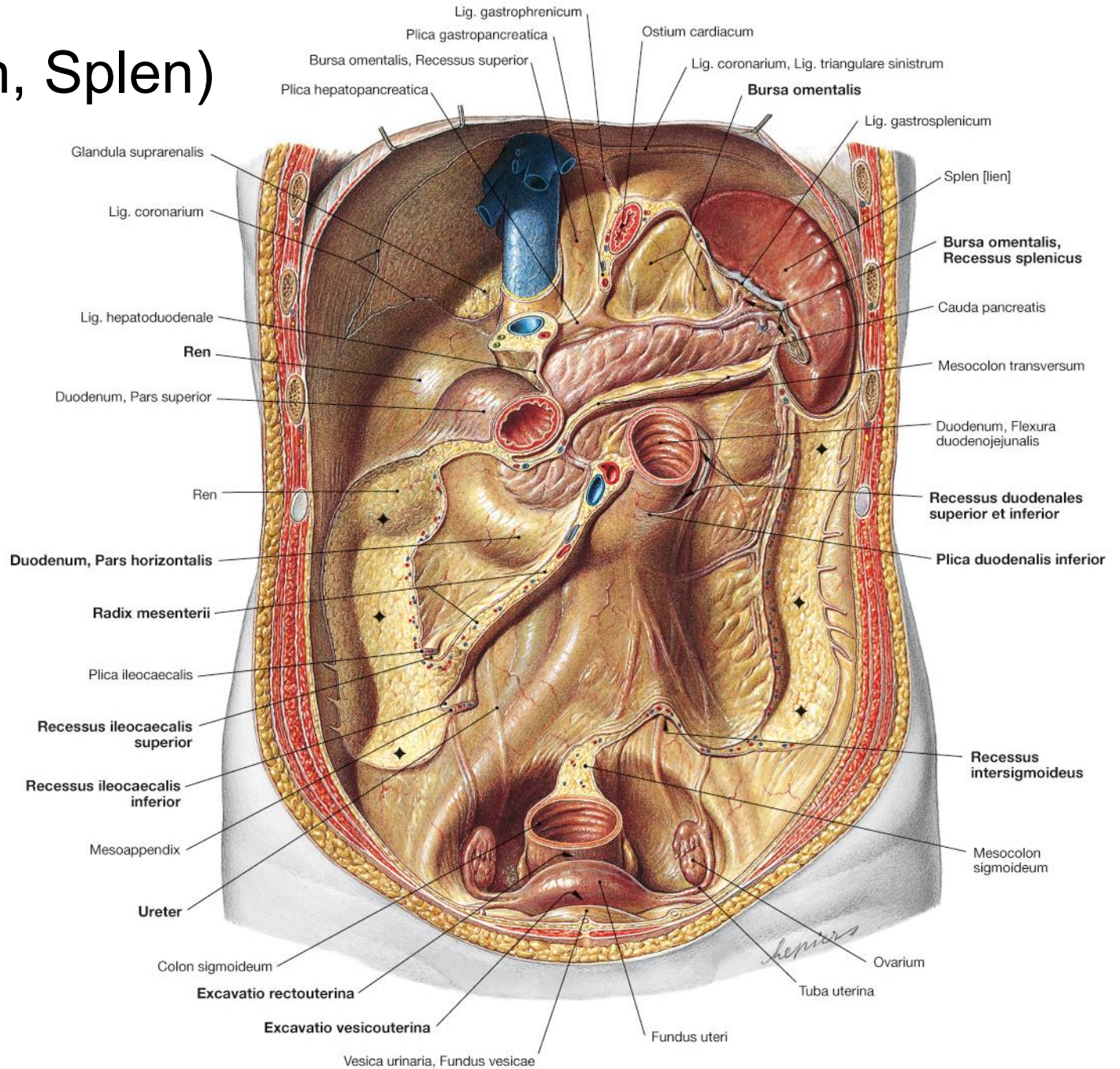


ADAM.

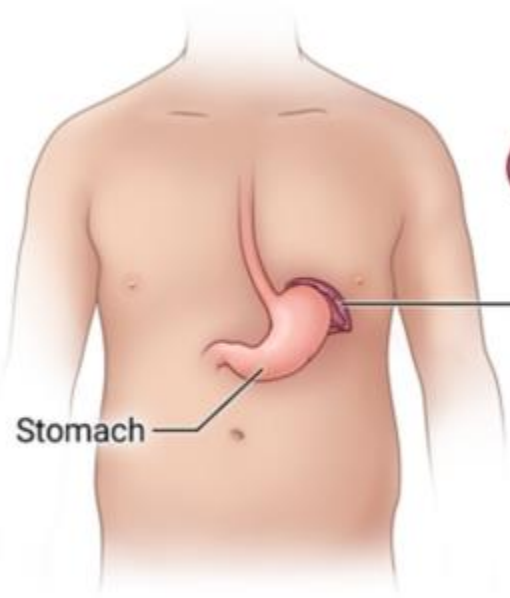
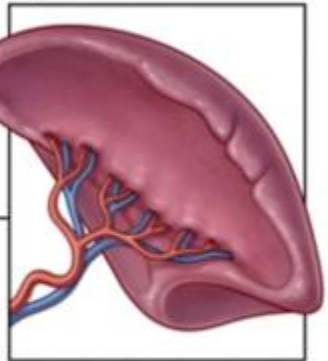




Lép (Lien, Splen)



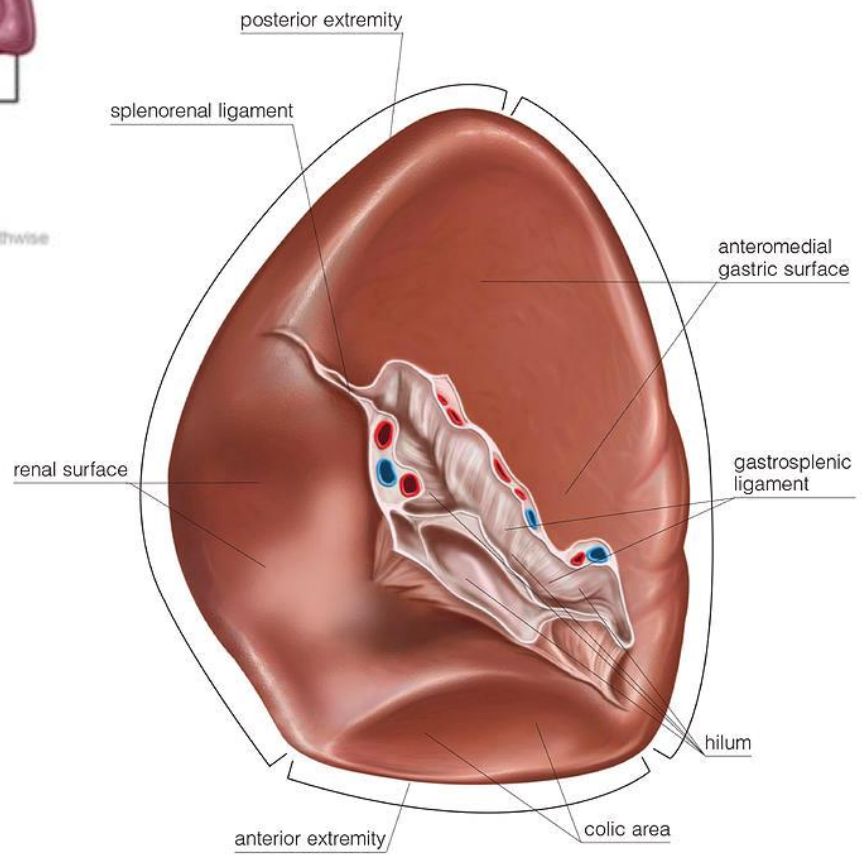
Spleen



Stomach

Lép (Lien, Splen)

© 2019 Healthwise





Köszönöm a figyelmet!