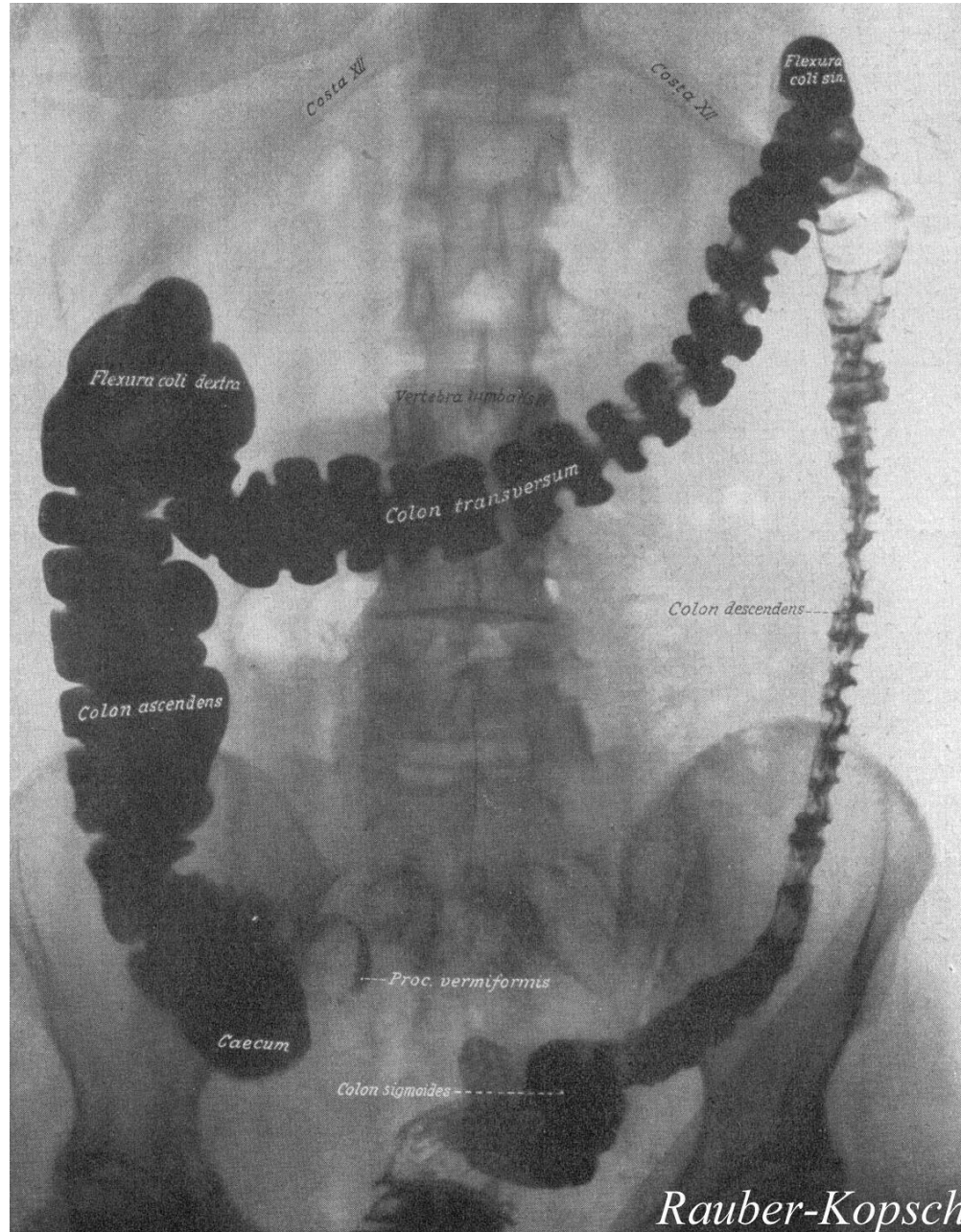
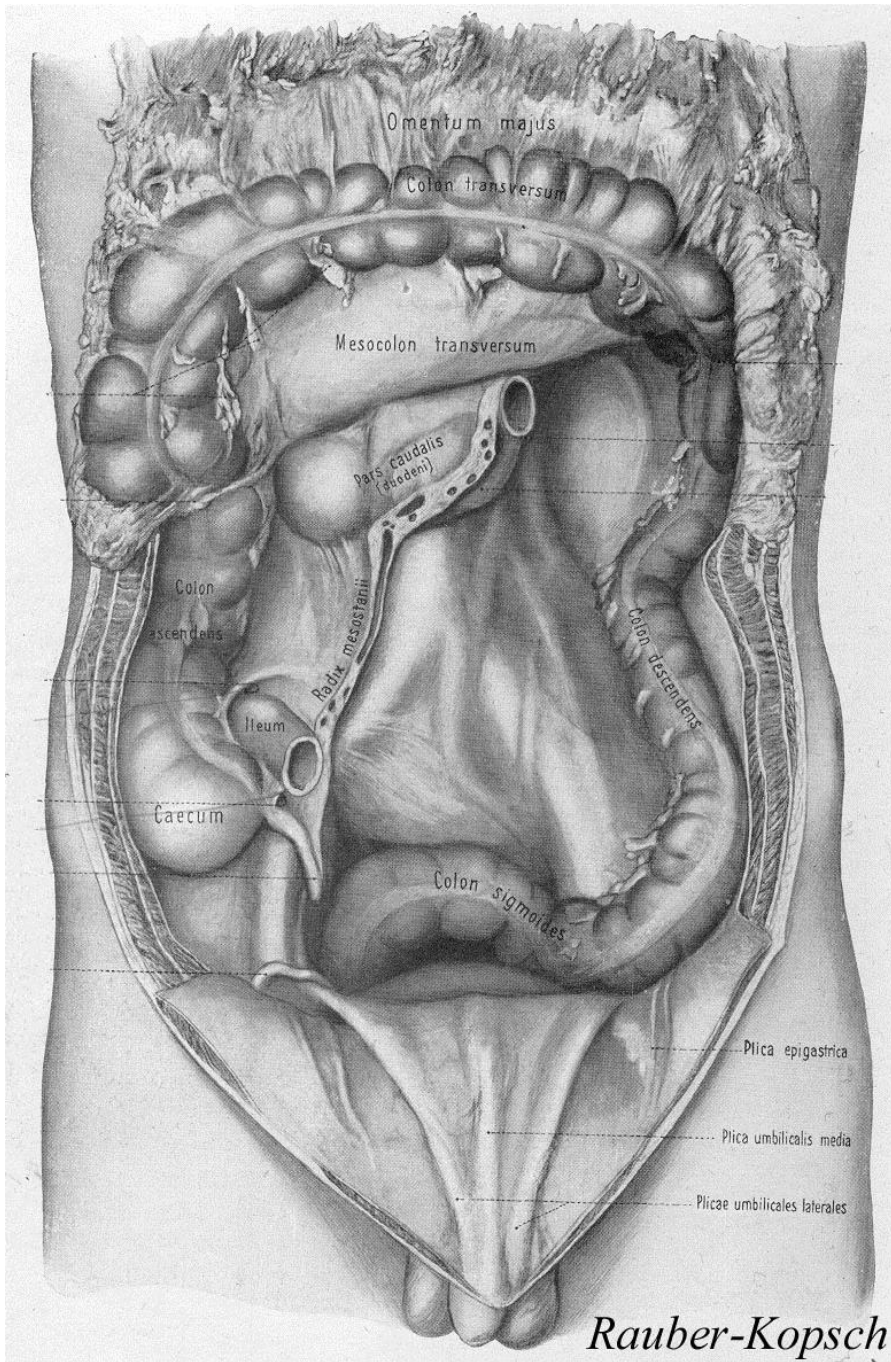


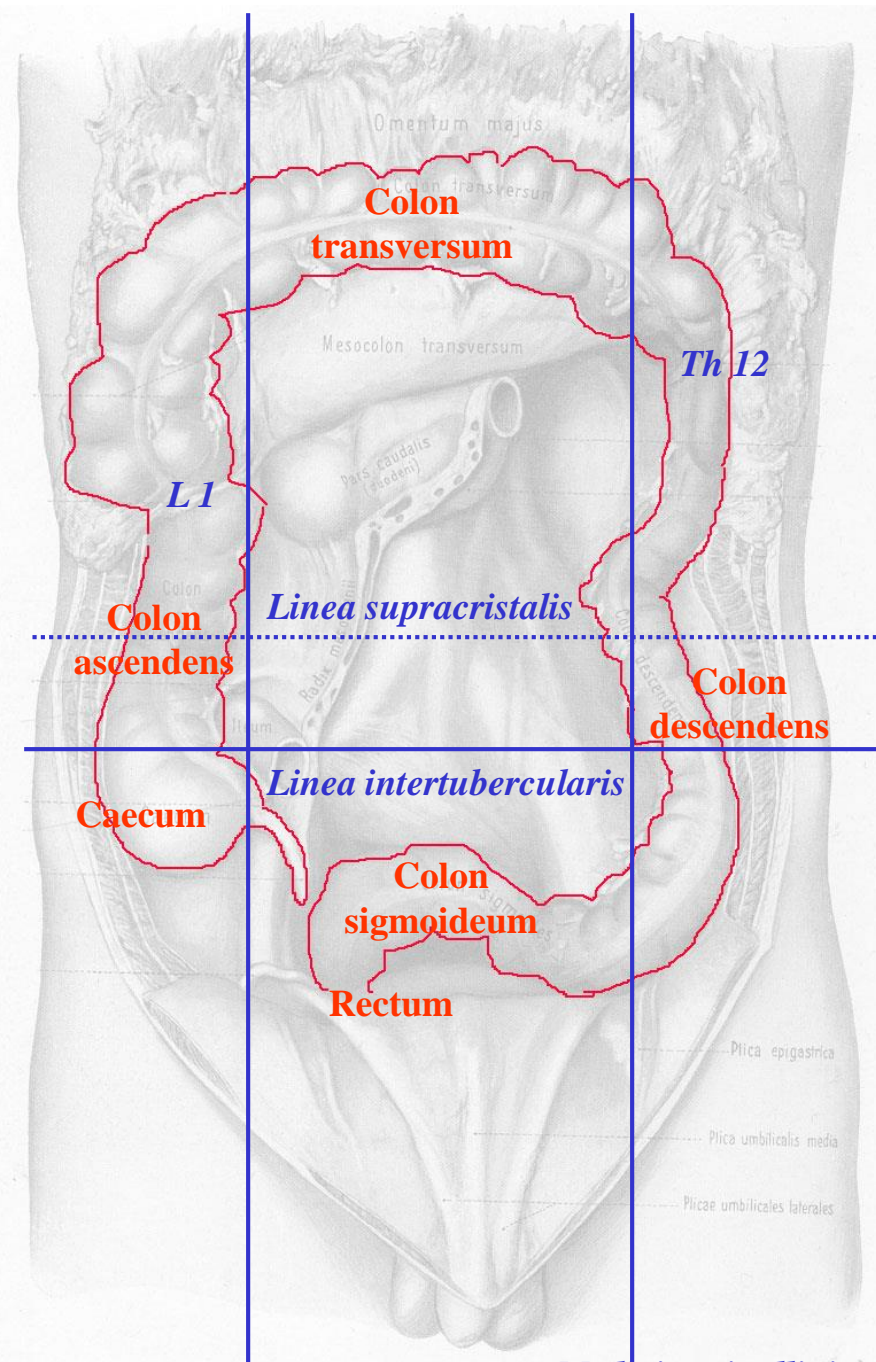
# Dickdarm, Mastdarm

# Röntgenbild des Dickdarms



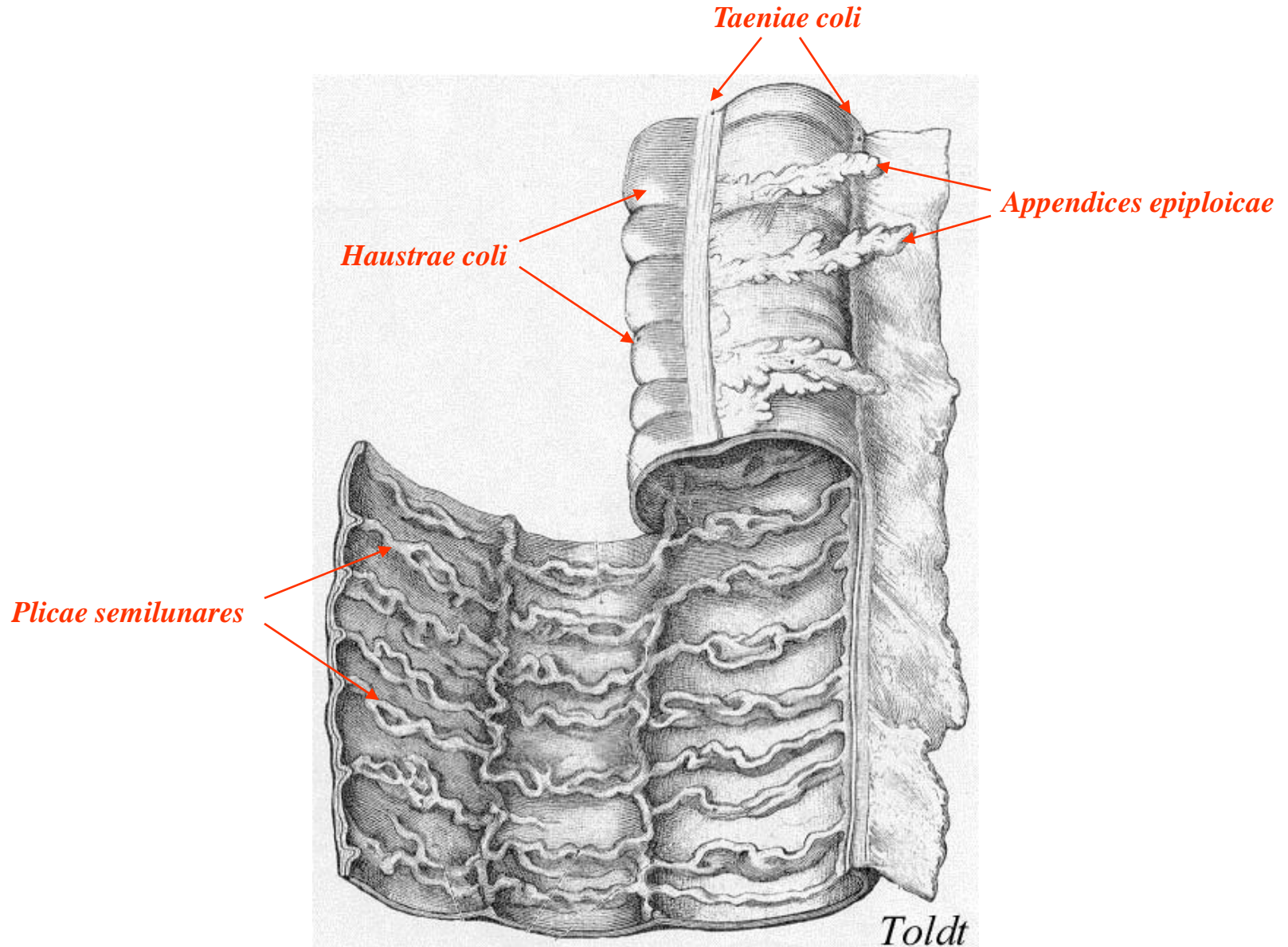


Rauber-Kopsch

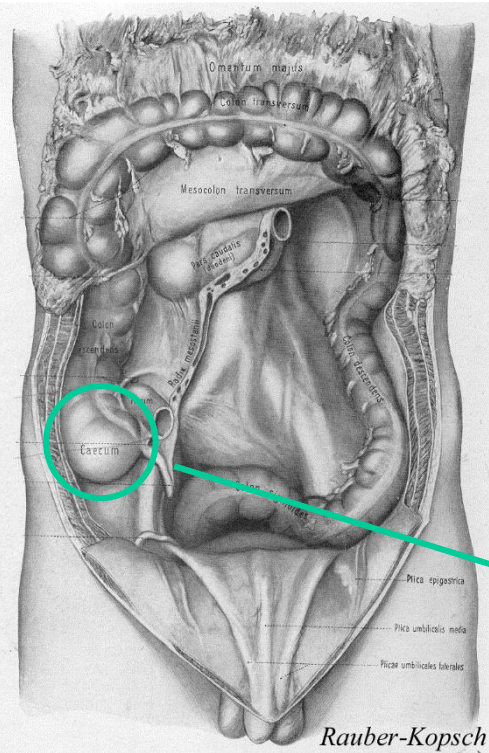


Medioinguinallinie

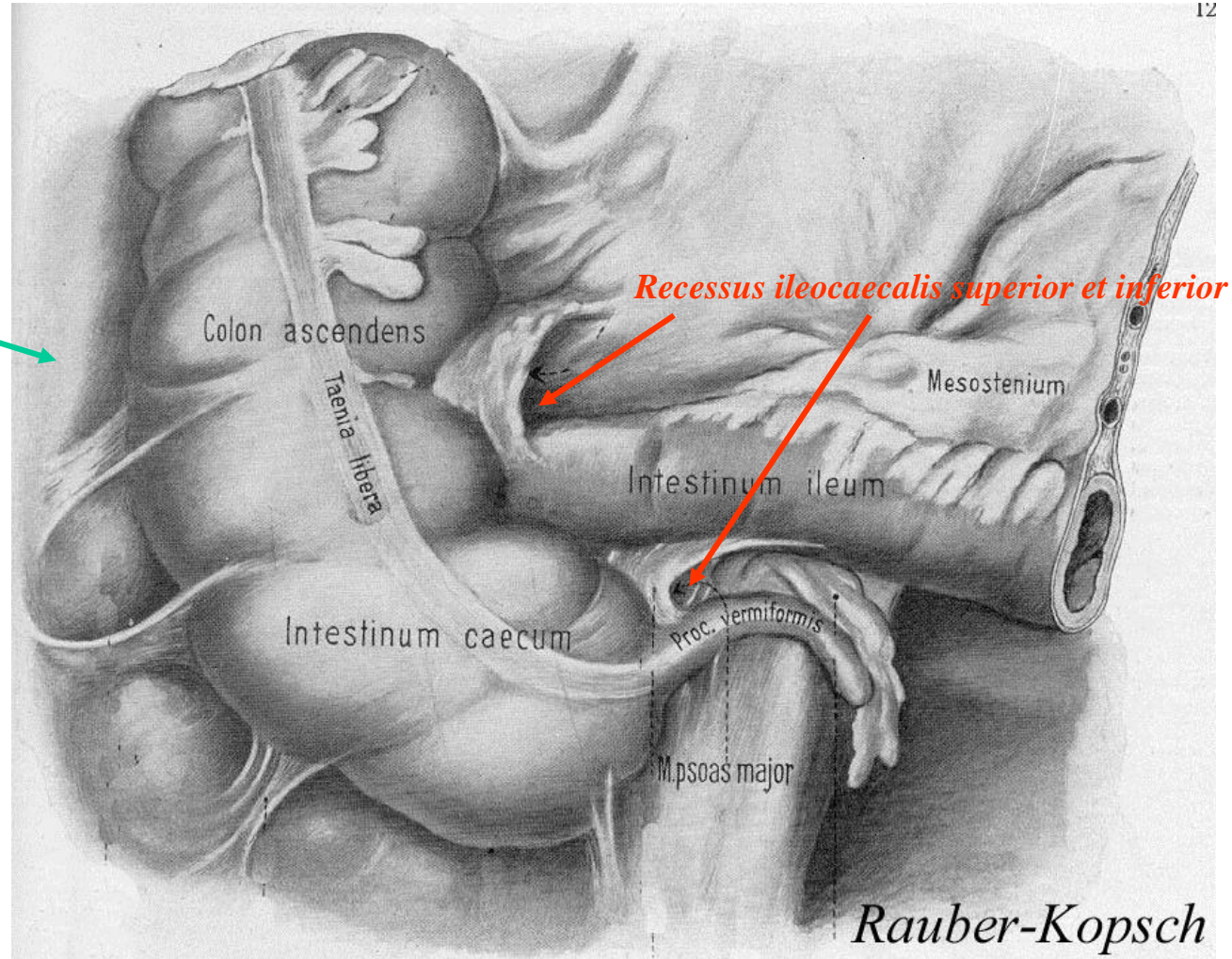
# Typische Merkmale des Dickdarms



# Blinddarm (*caecum*)



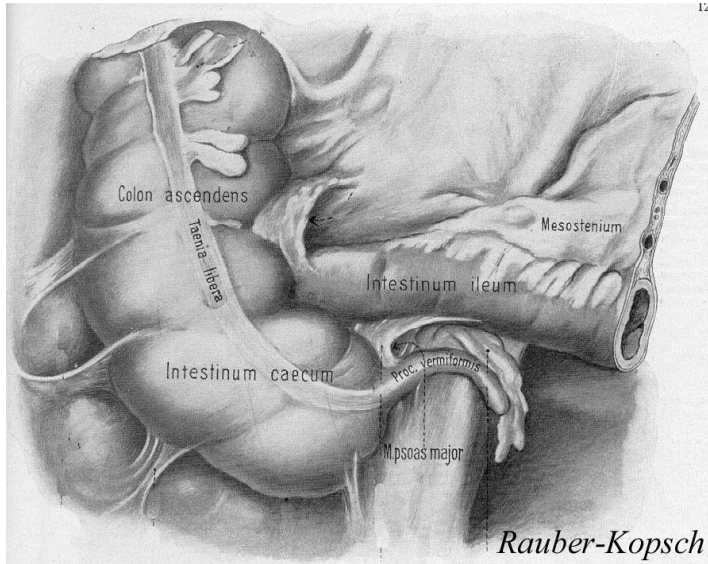
Rauber-Kopsch



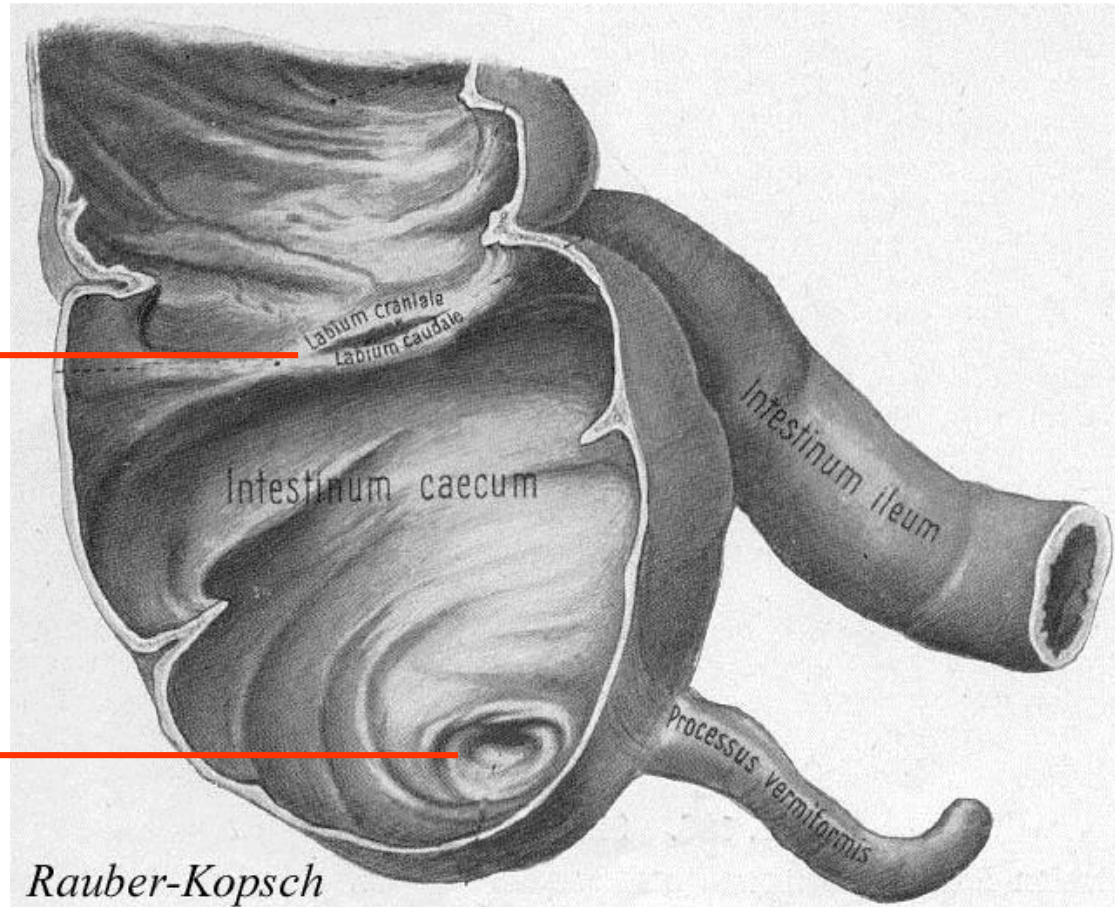
12

Rauber-Kopsch

# Blinddarm (*caecum*)

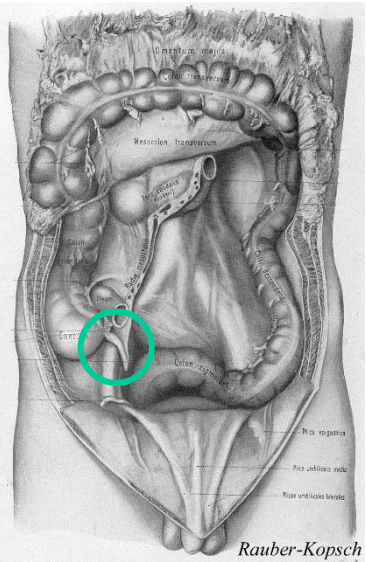


*Ostium et valva ileocaecalis*

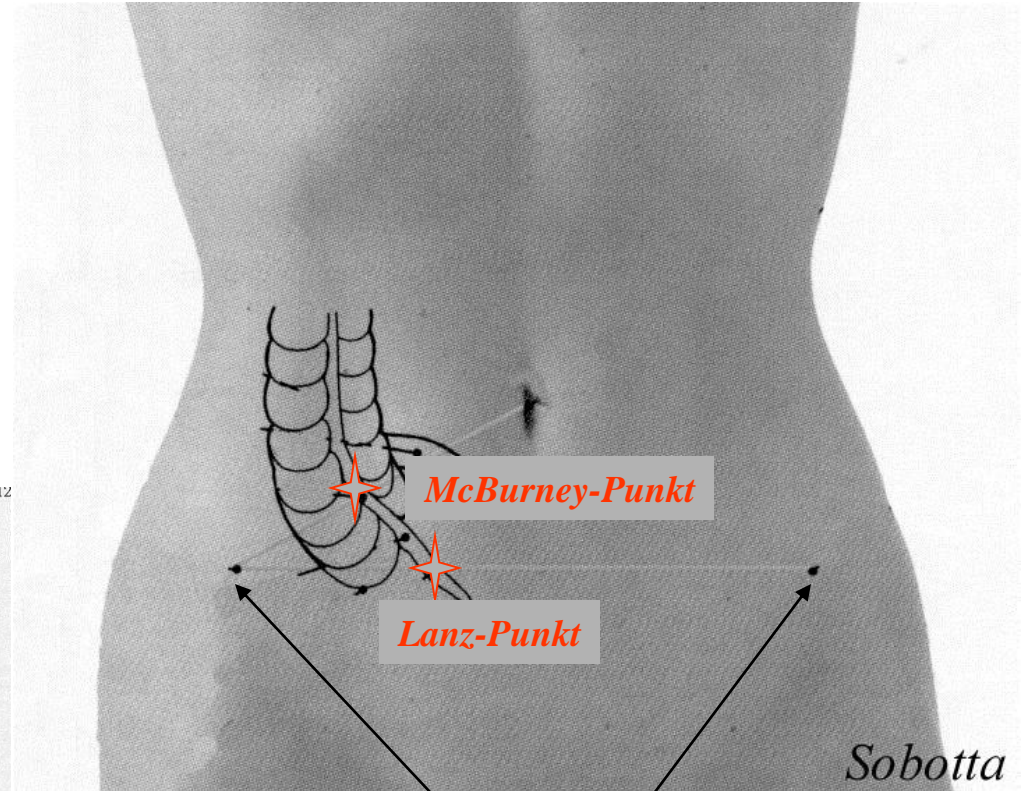


*Ostium appendicis vermiformis*

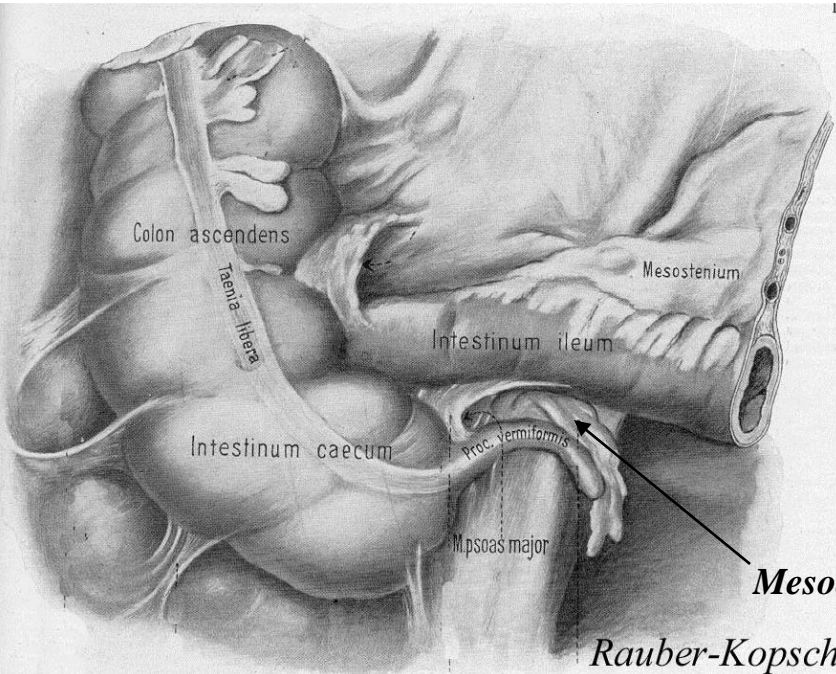
# Wurmfortsatz (*appendix vermiformis, tonsilla abdominalis*)



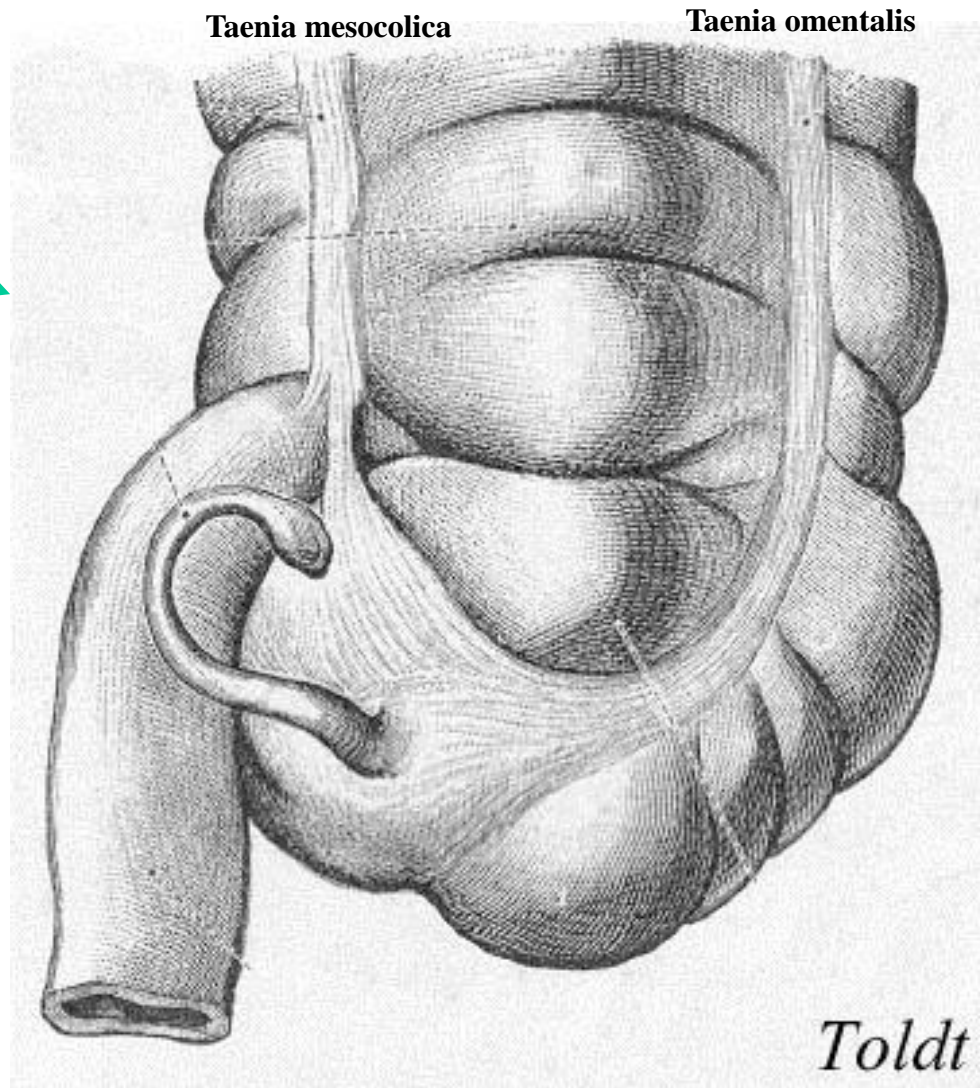
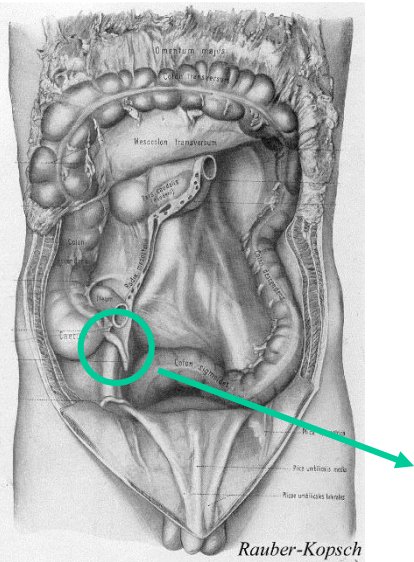
12



*Spinae iliacae anteriores superiores*

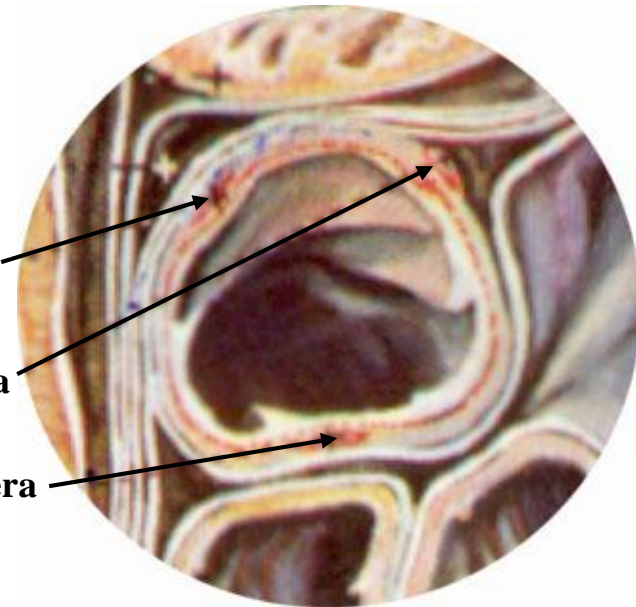
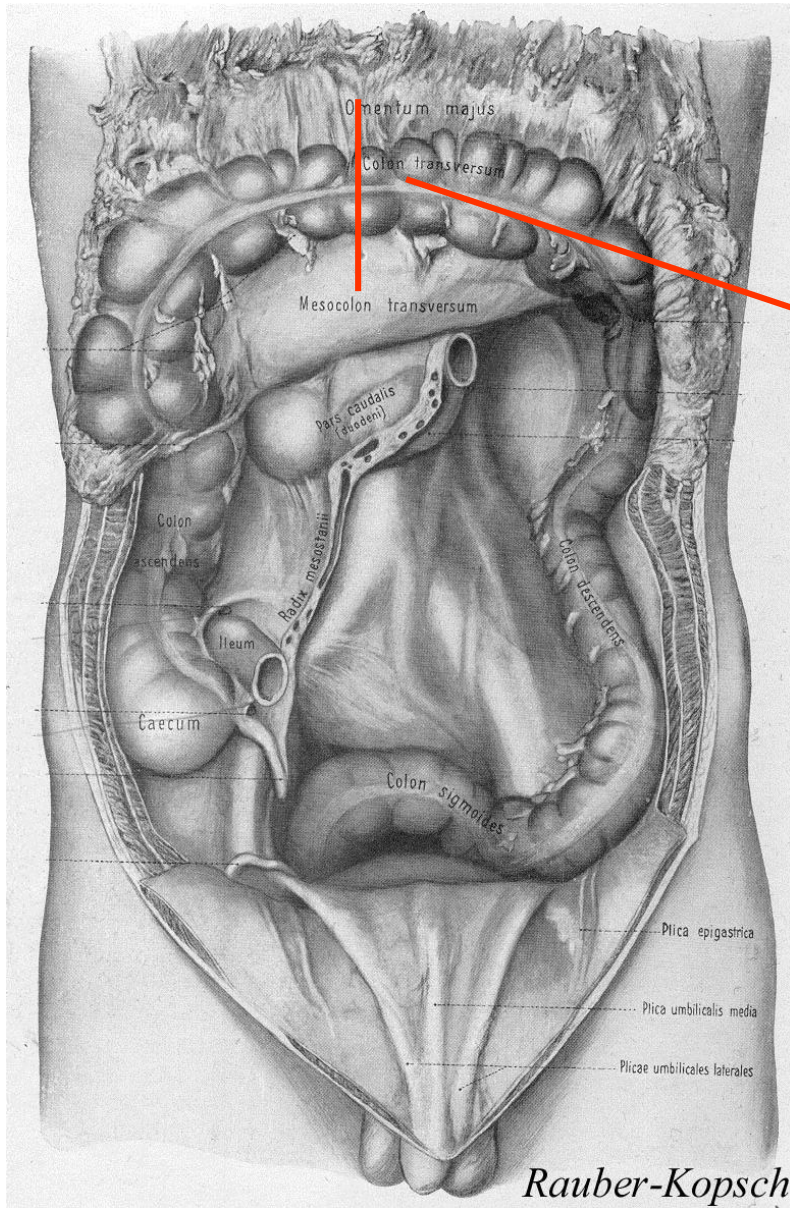


# Wurmfortsatz (*appendix vermiformis, tonsilla abdominalis*)





# Colon (*colon ascendens, transversum et descendens*)

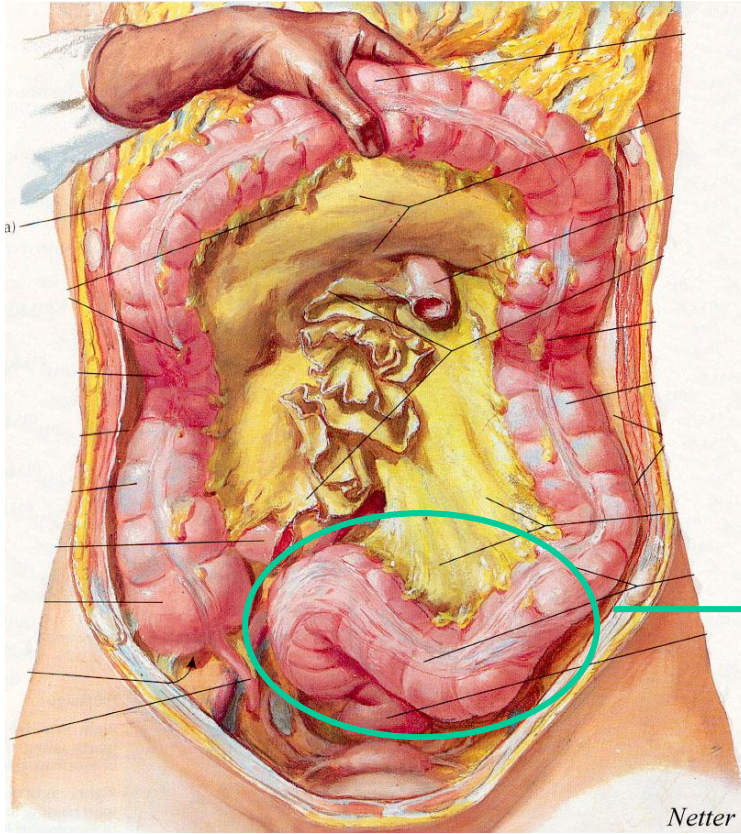


**Taenia omentalis**

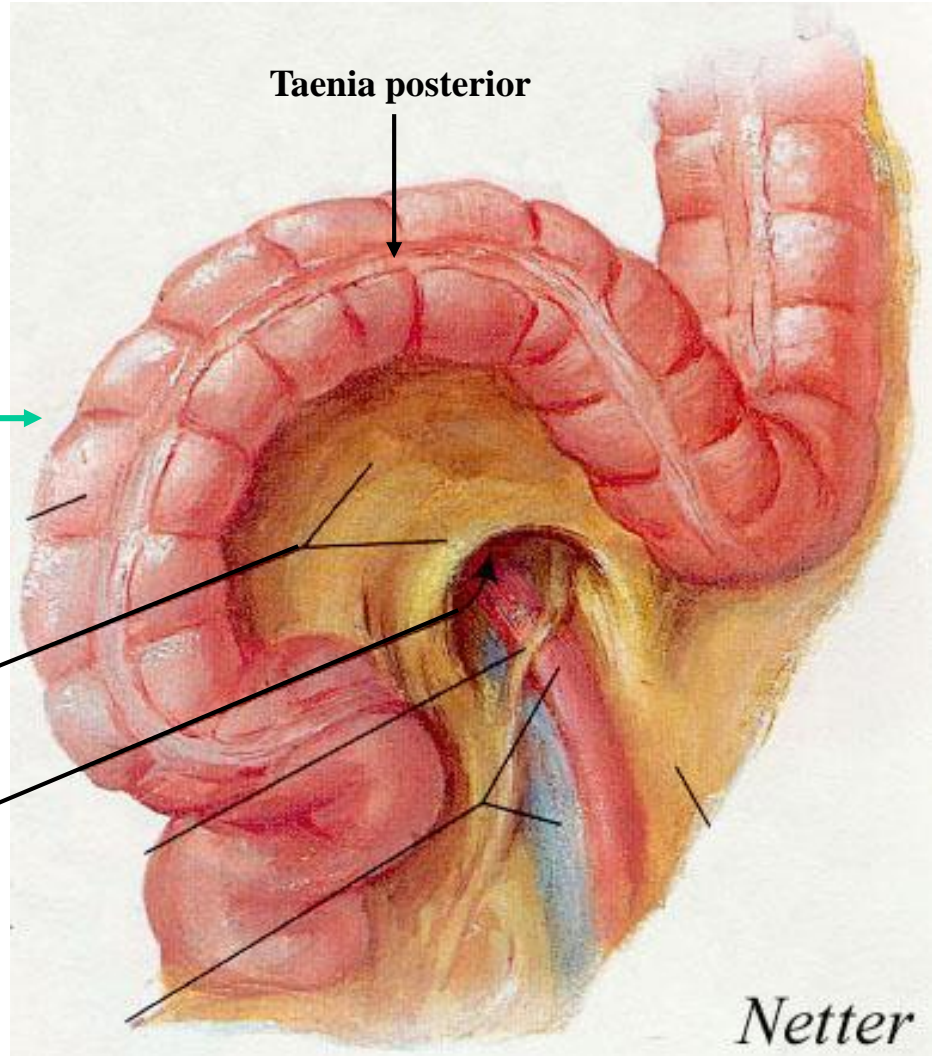
**Taenia mesocolica**

**Taenia libera**

# Sigmoid (*colon sigmoideum*)



Netter



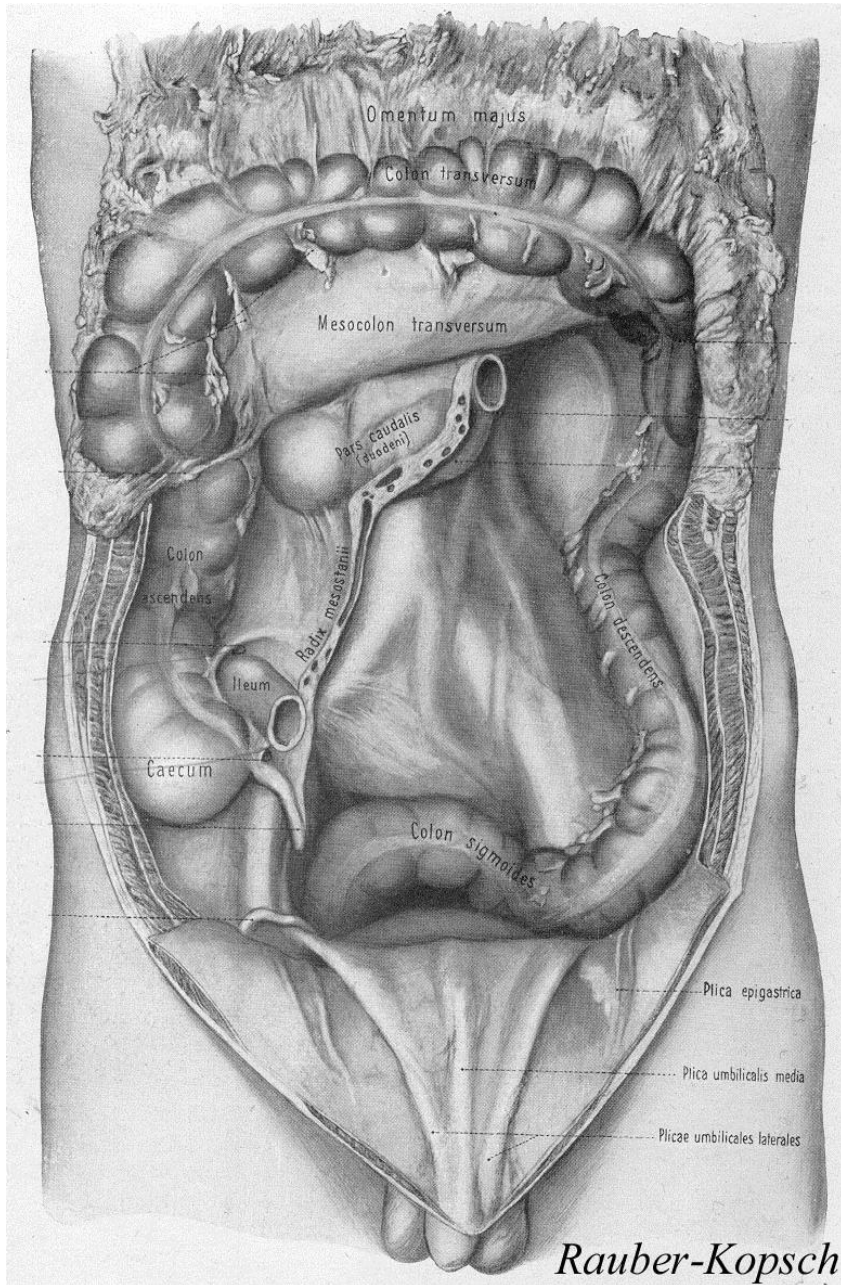
Taenia posterior

Mesosigmoideum

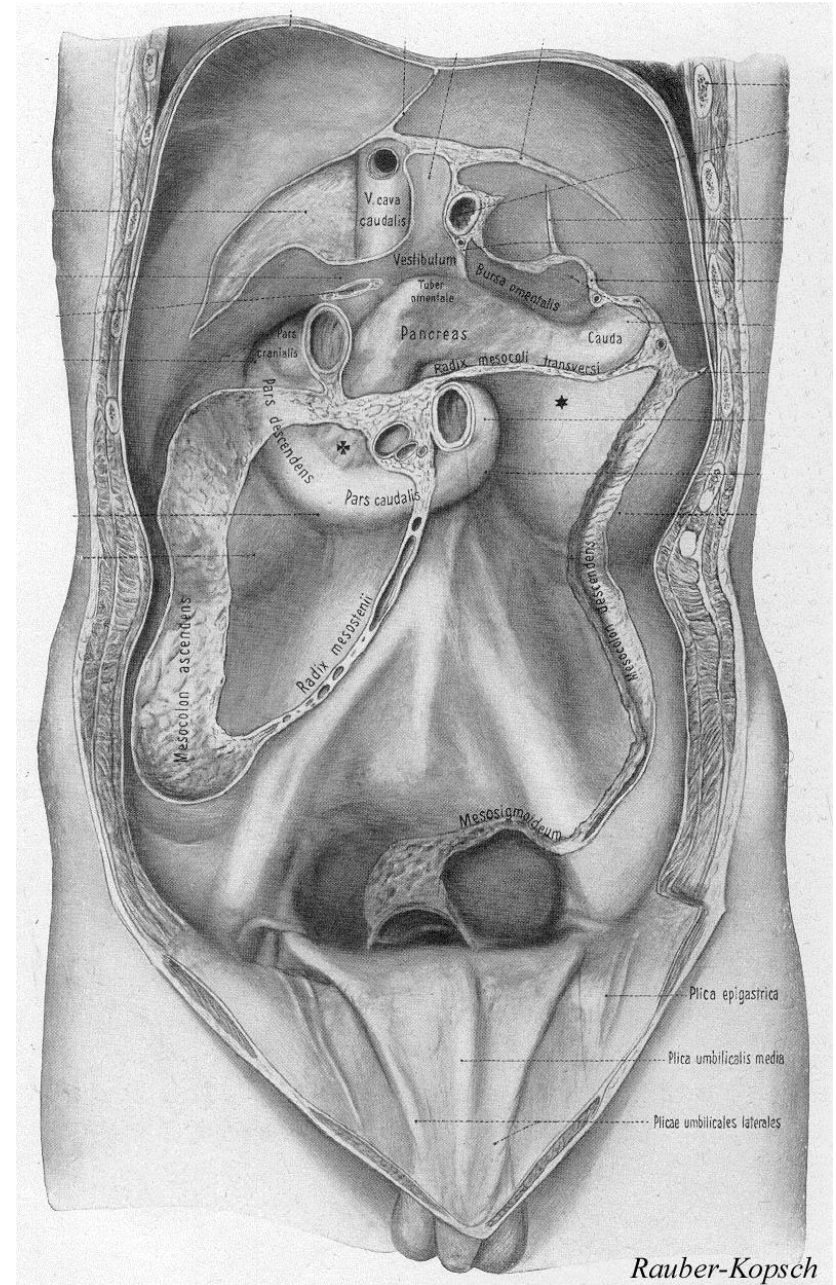
Recessus intersigmoideus

Netter

# Peritonealverhältnis der Dickdärme

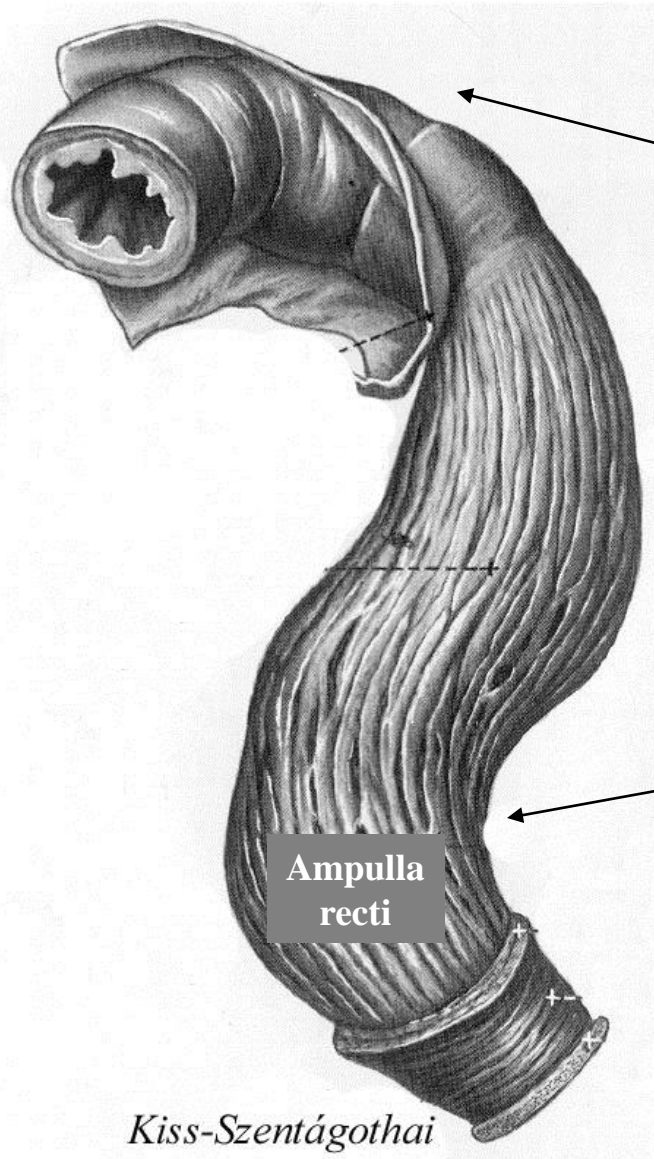


Rauber-Kopsch

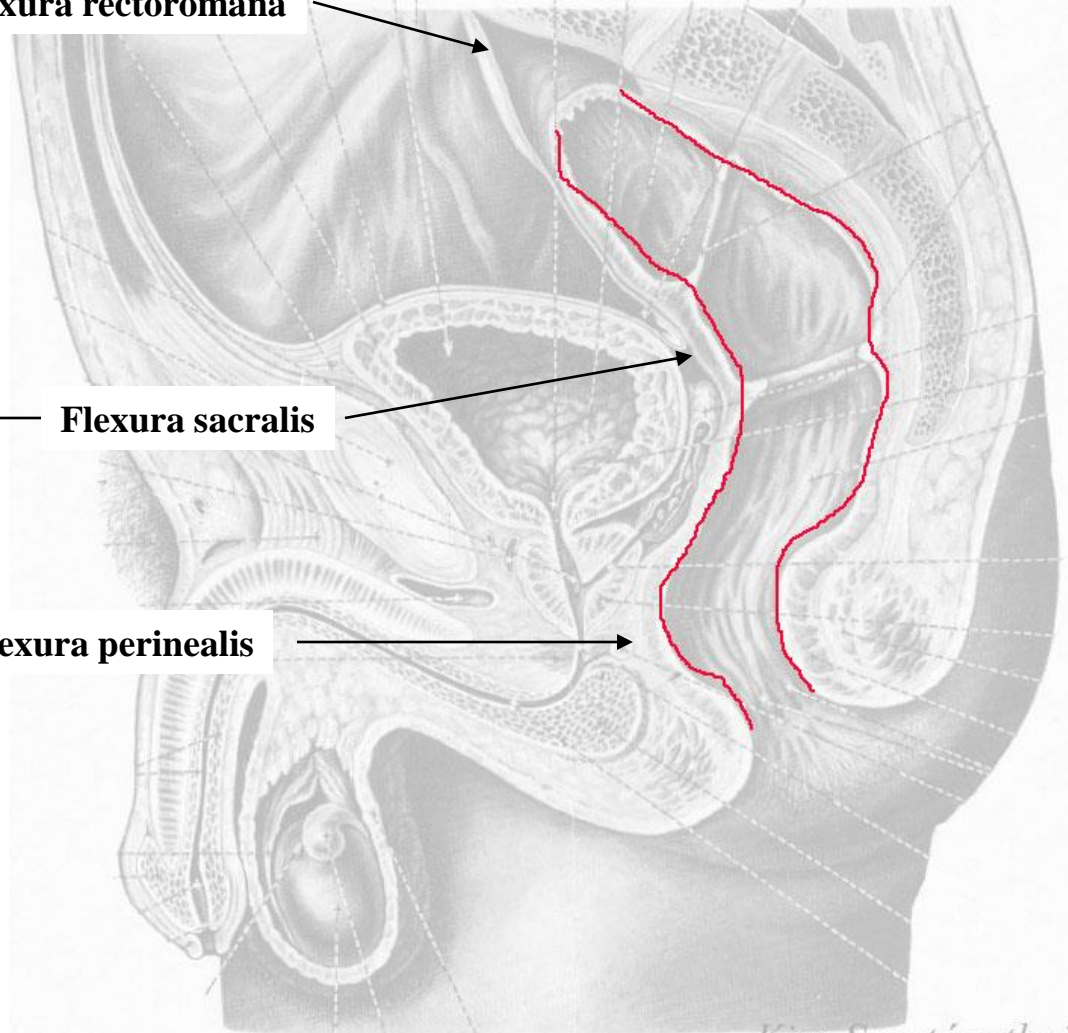


Rauber-Kopsch

# Mastdarm (*rectum*)



**Flexura rectoromana**



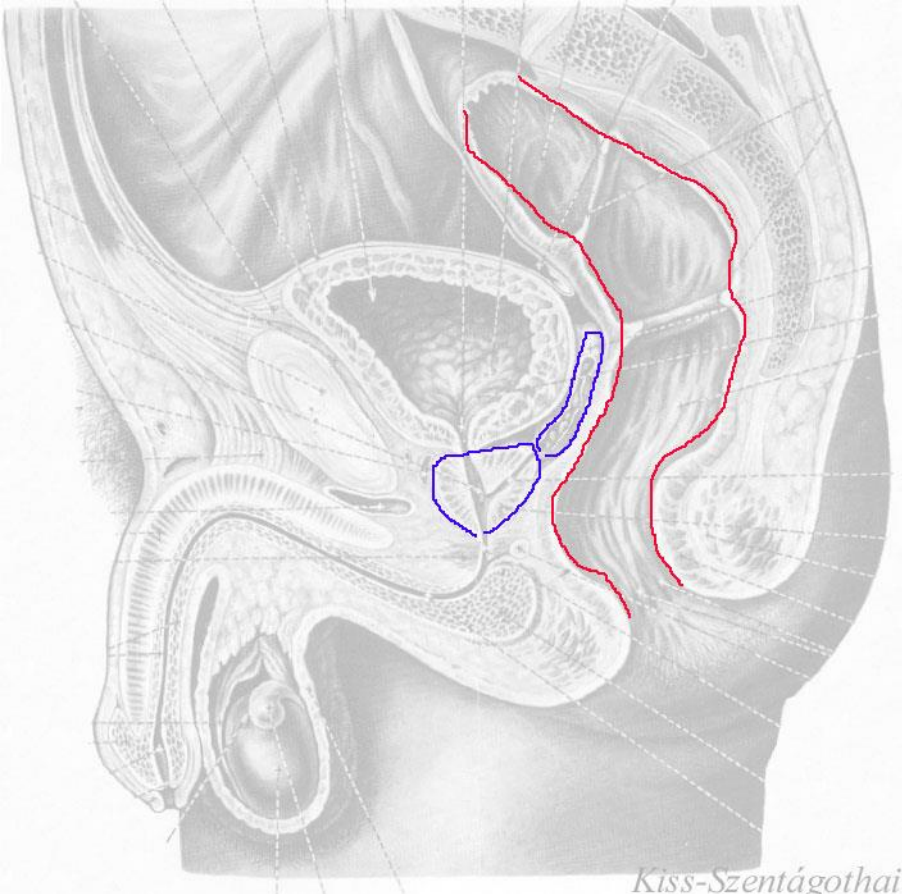
**Flexura sacralis**

**Flexura perinealis**

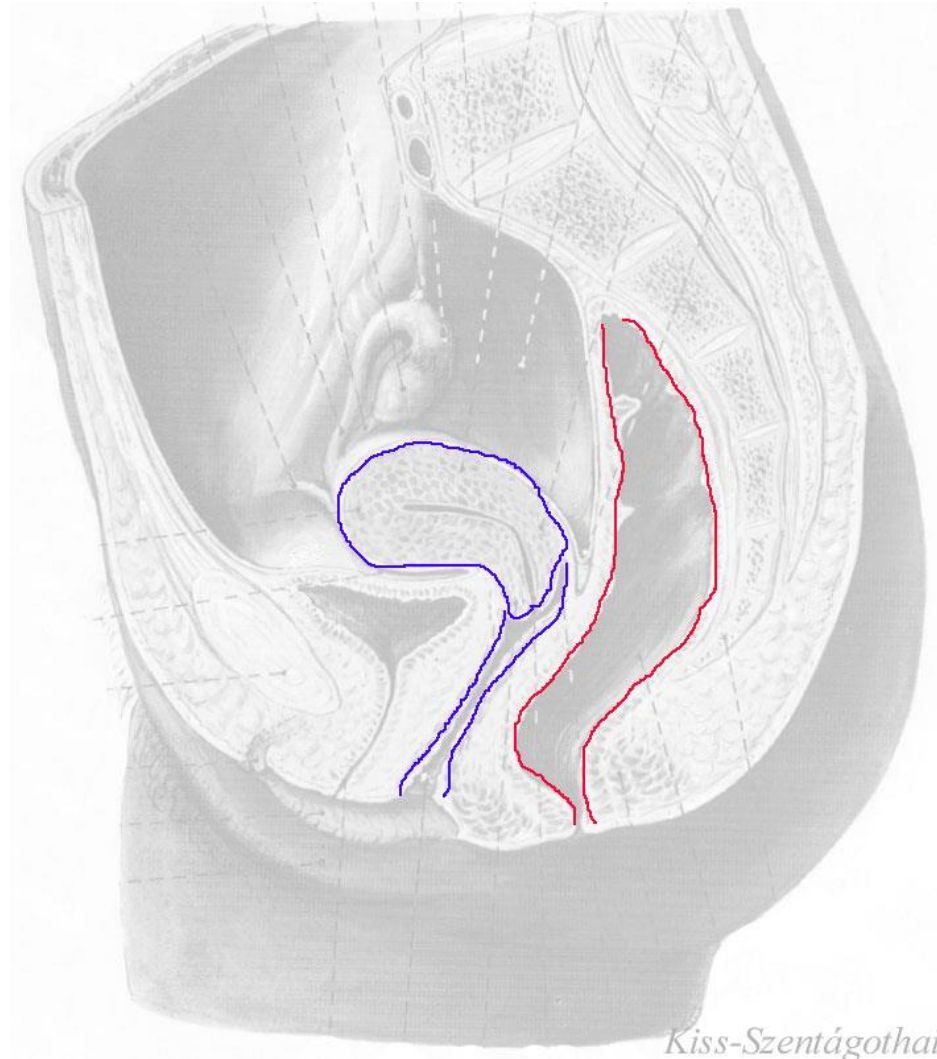
**Ampulla  
recti**

*Kiss-Szentágothai*

# Mastdarm (*rectum*) - Syntopie

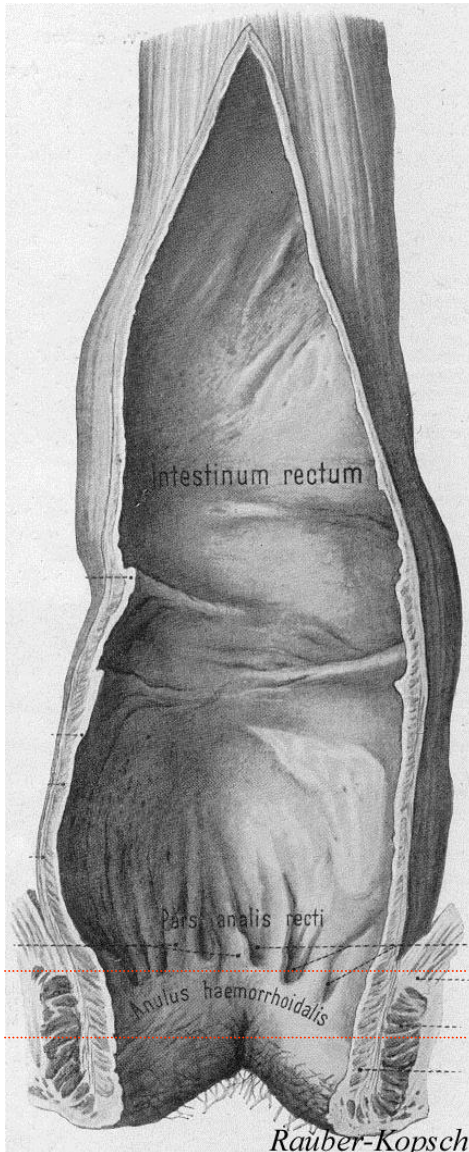


**Prostata, vesicula seminalis**



**Vagina, uterus**

# Mastdarm (*rectum*), Anus



**plicae transversales  
recti**

*Kohlrausch-Falte*

**zona columnaris**

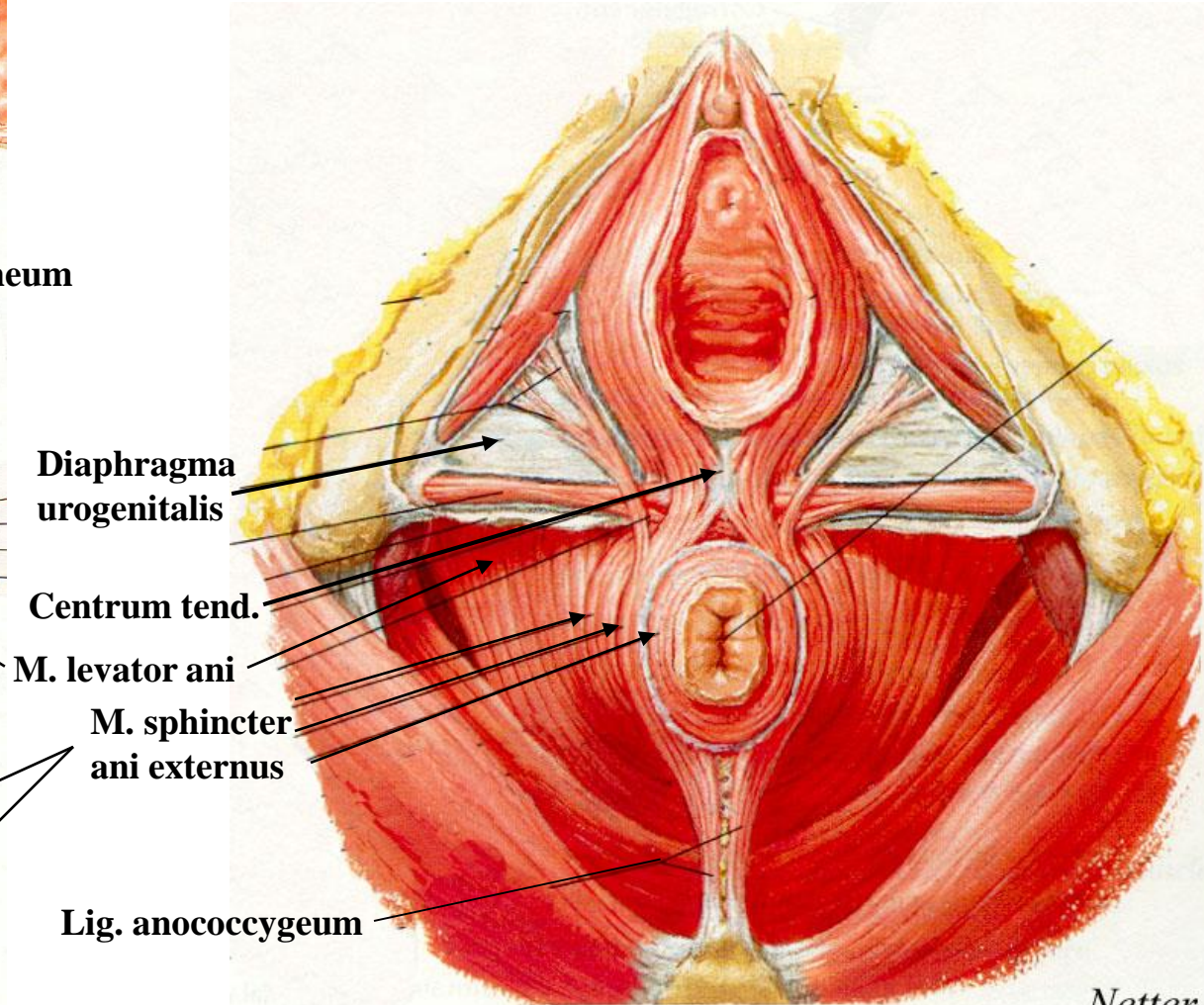
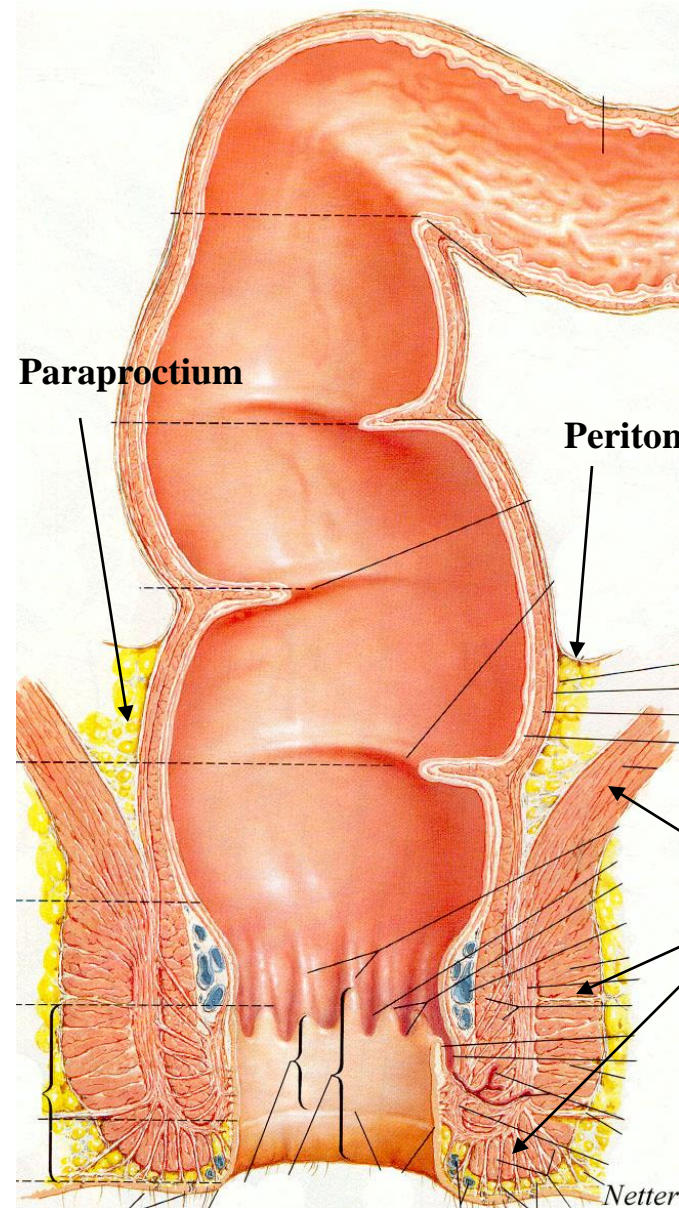
*columnae et sinus anales*

**zona hemorrhoidalis**

*venae haemorrhoidales*

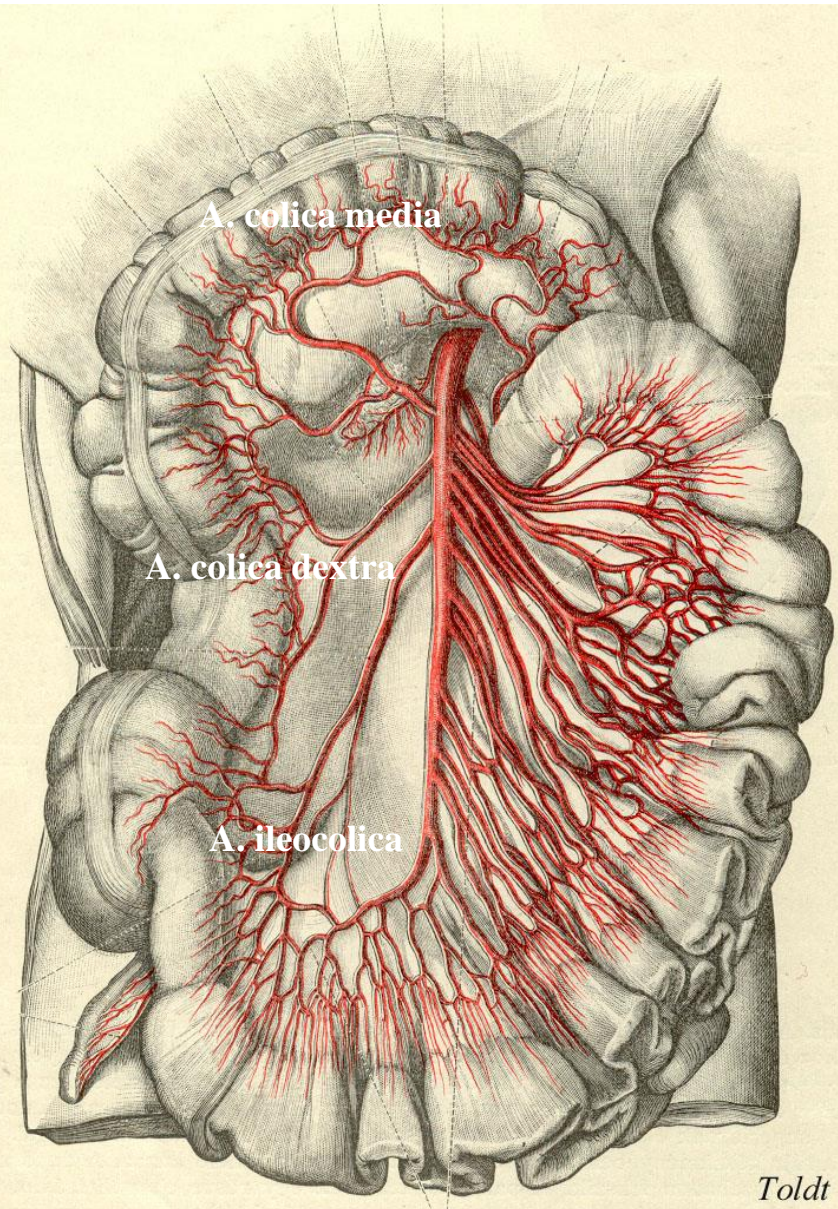
**zona cutanea**

# Mastdarm (*rectum*) - Fixation

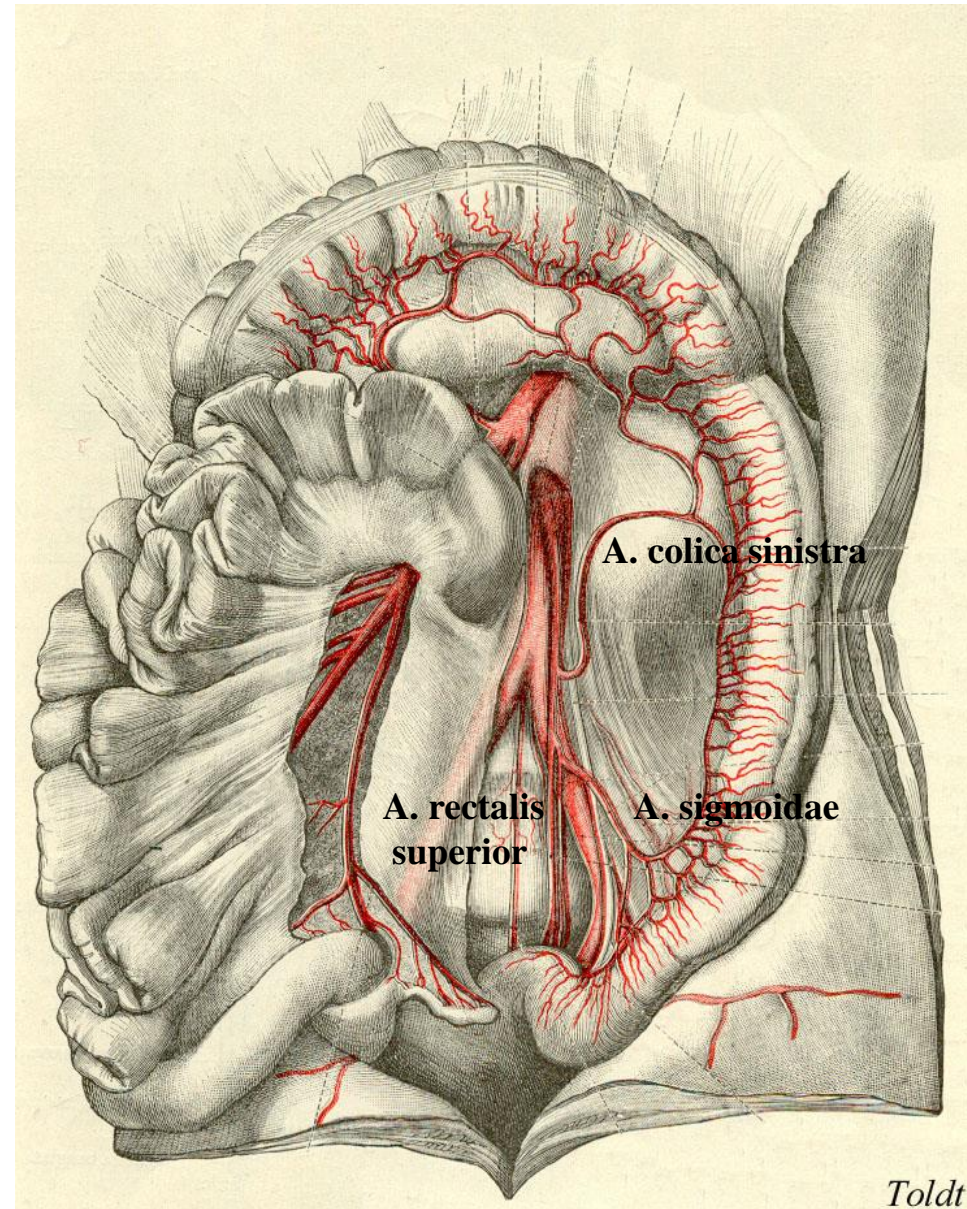


# Blutversorgung der Dickdärme

**A. mesenterica superior**



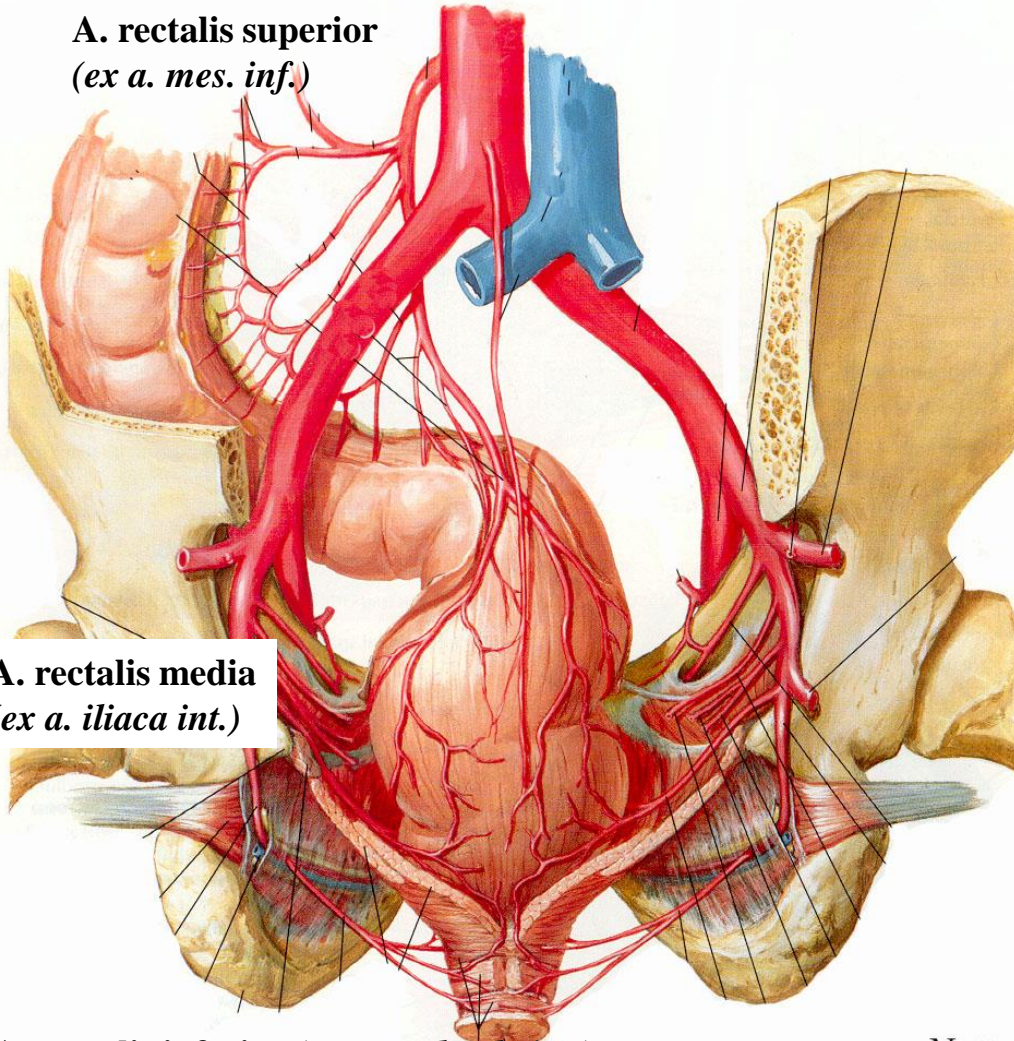
**A. mesenterica inferior**





# Blutversorgung des Mastdarmes. Portocavale Anastomosen

**A. rectalis superior**  
(*ex a. mes. inf.*)

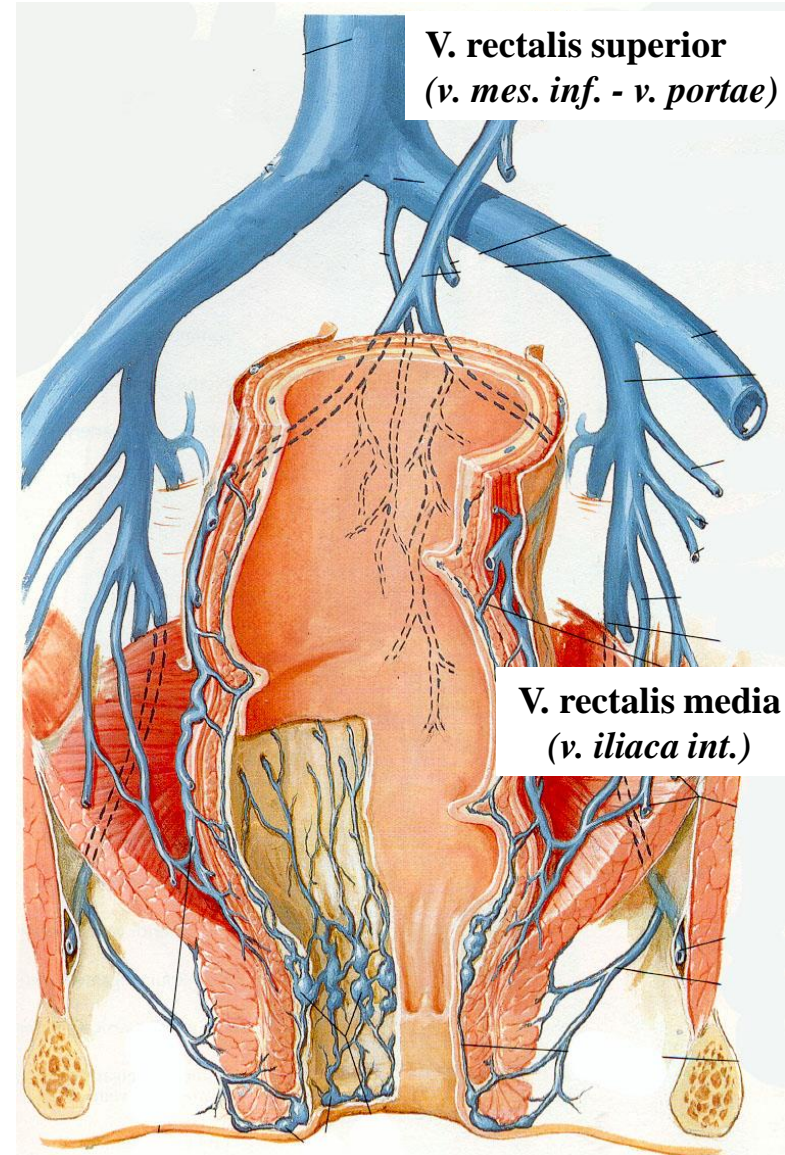


**A. rectalis media**  
(*ex a. iliaca int.*)

**A. rectalis inferior** (*ex a. pudenda int.*)

Netter

**A. mesenterica inferior**



**V. rectalis superior**  
(*v. mes. inf. - v. portae*)

**V. rectalis media**  
(*v. iliaca int.*)

**V. rectalis inferior** (*v. pudenda int.*)

Netter