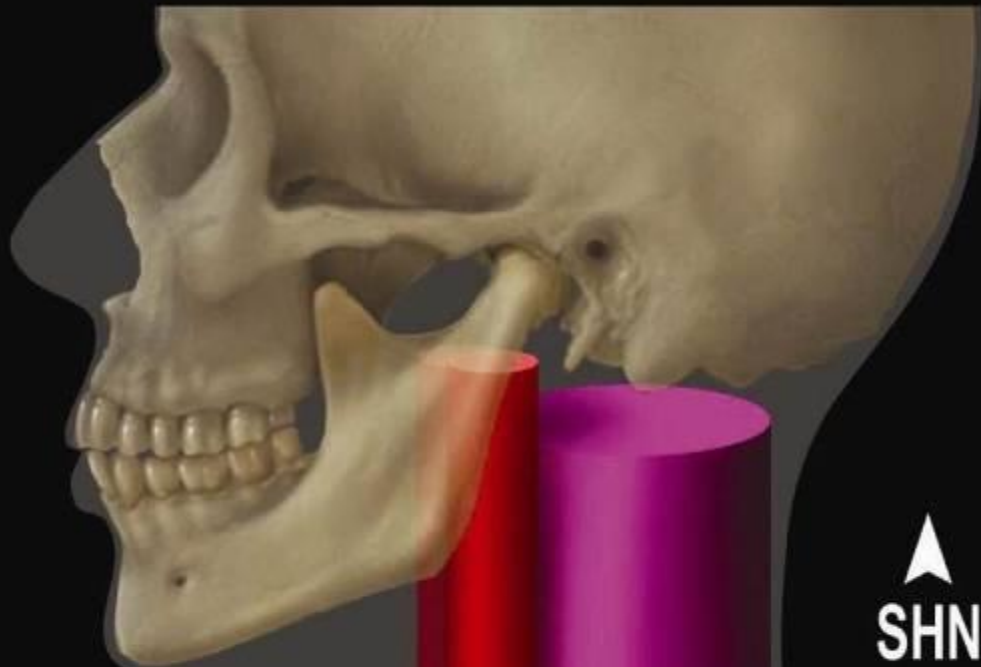


A NYAKI FASCÁK ÉS TEREK TOPOGRÁFIÁJA

Barna János

Suprahyoidalis terek



Hyoid bone

Visceral space

Carotid space

VS

CS

PVS

SHN

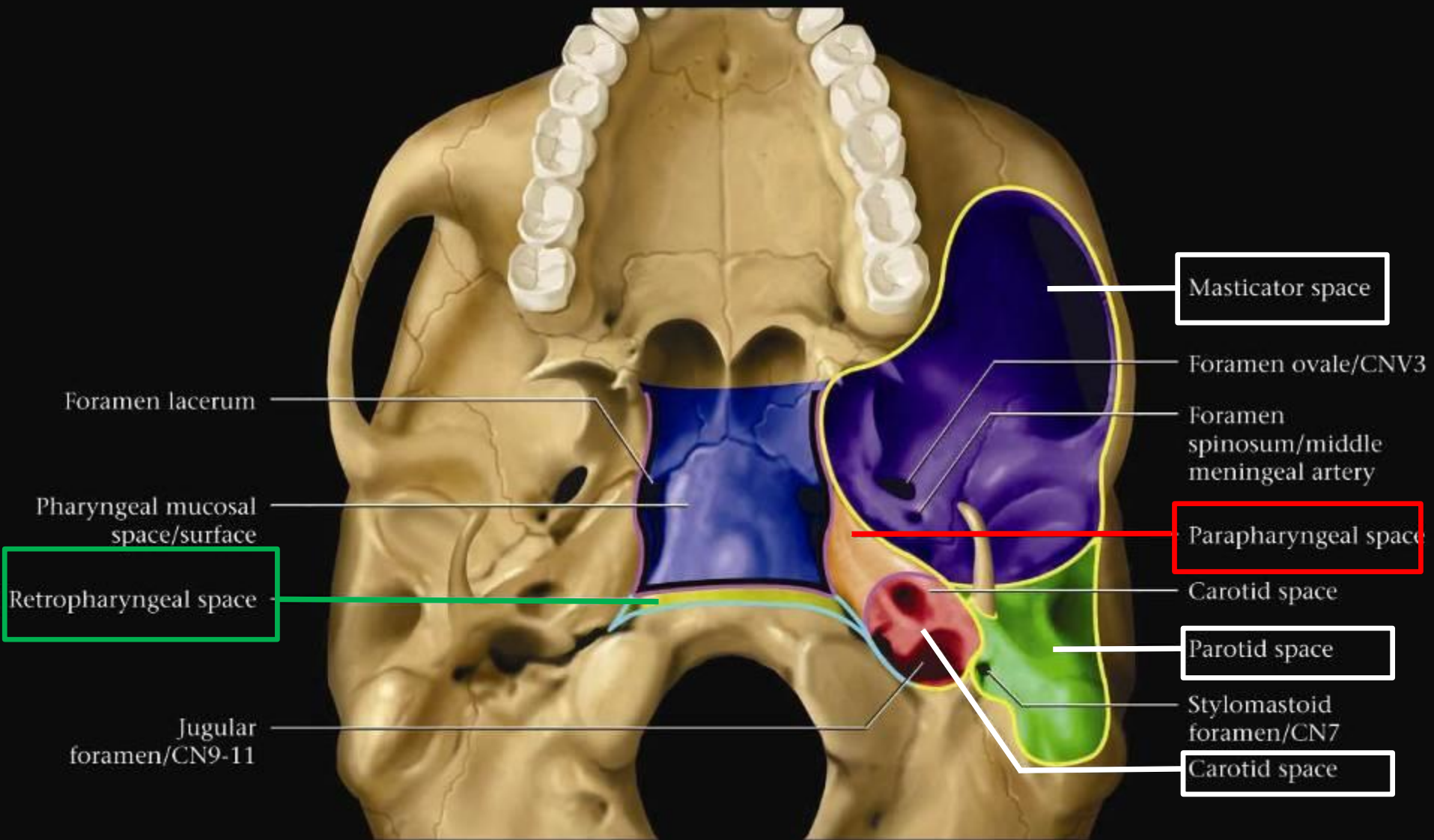
IHN

Suprahyoid neck

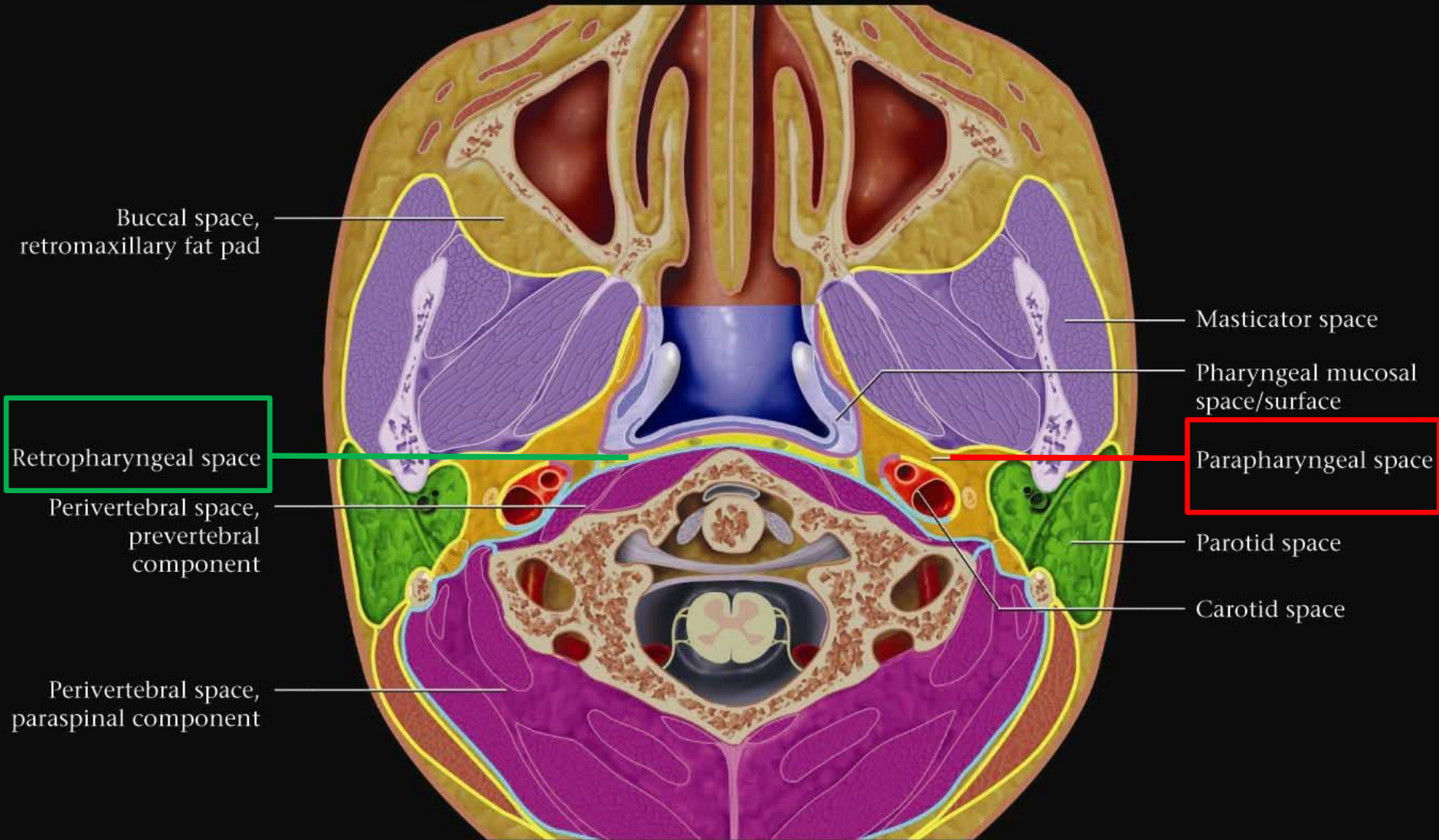
Infrahyoid neck

Perivertebral space

Superficial layer, deep cervical fascia



Peripharyngealis terek





1. M. orbicularis oris
2. M. buccinator
3. Corpus adiposum buccae
4. M. masseter
5. Ramus mandibulae
6. M. pterygoideus med.
7. M. palatoglossus
8. Tonsilla palatina
9. M. palatopharyngeus
10. Isthmus faucium
11. M. constrictor pharyngis
12. Sp. retropharyngeum
13. M. longus capitis
14. Atlas
15. Dens axis
16. Glandula parotidea
17. A. carotis interna
18. A. vertebralis
19. A. carotis externa
20. M. digastricus vent. post.
21. M. semispinalis capitis
22. M. splenius capitis
23. M. trapezius
24. M. sternocleidomast.

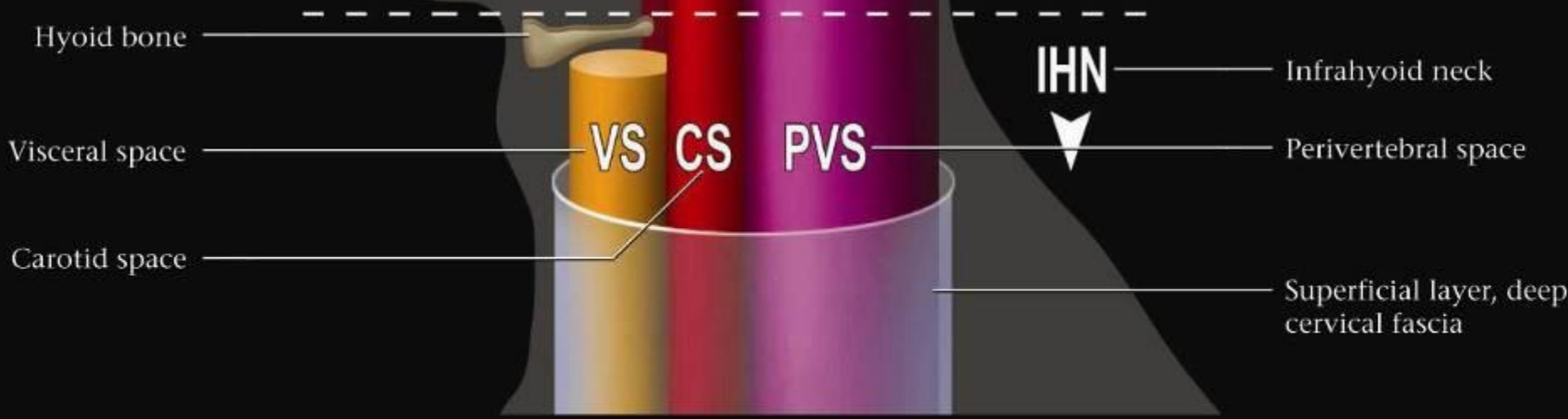
Parapharyngeal spaces

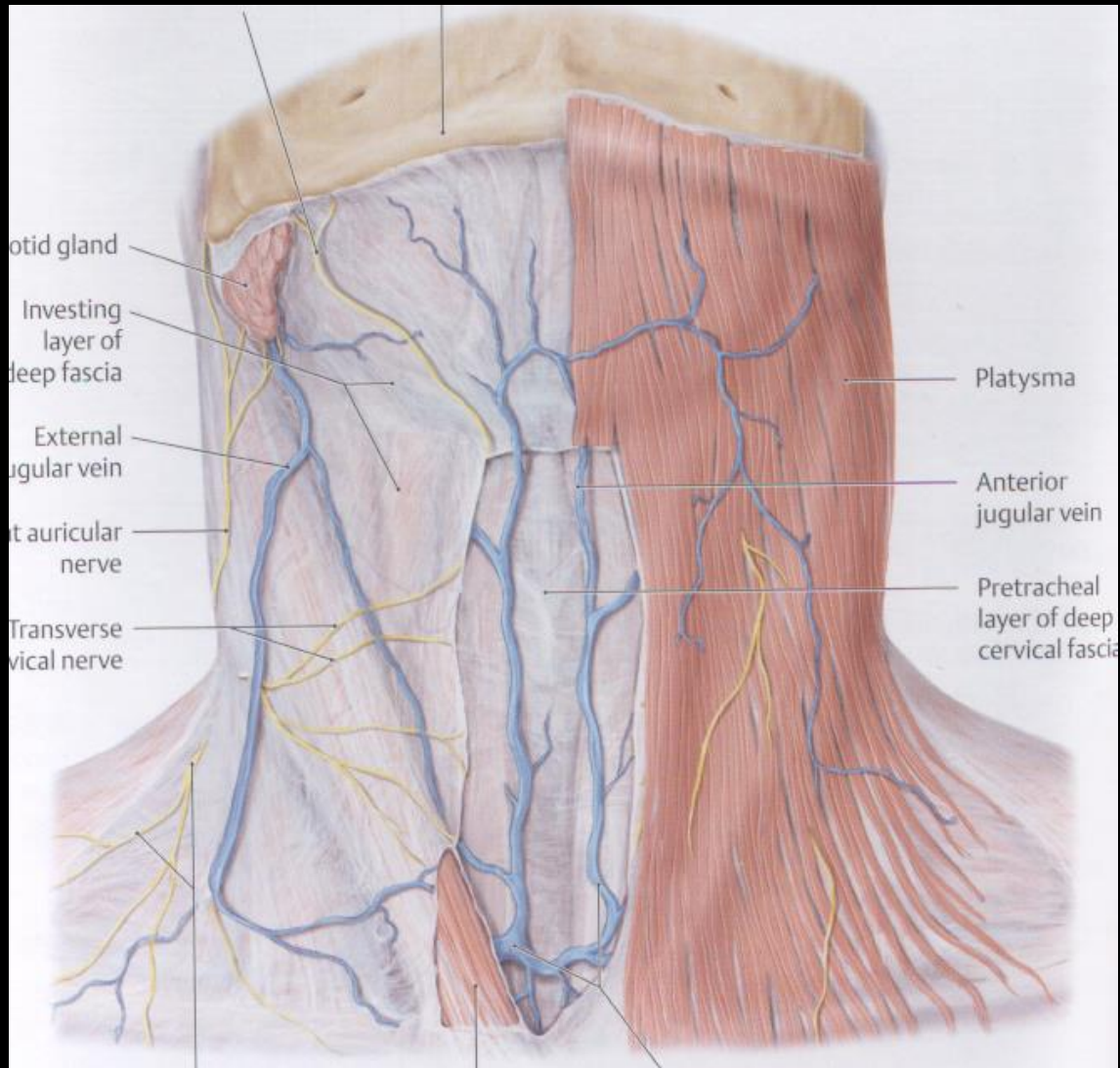
Retropharyngeal space

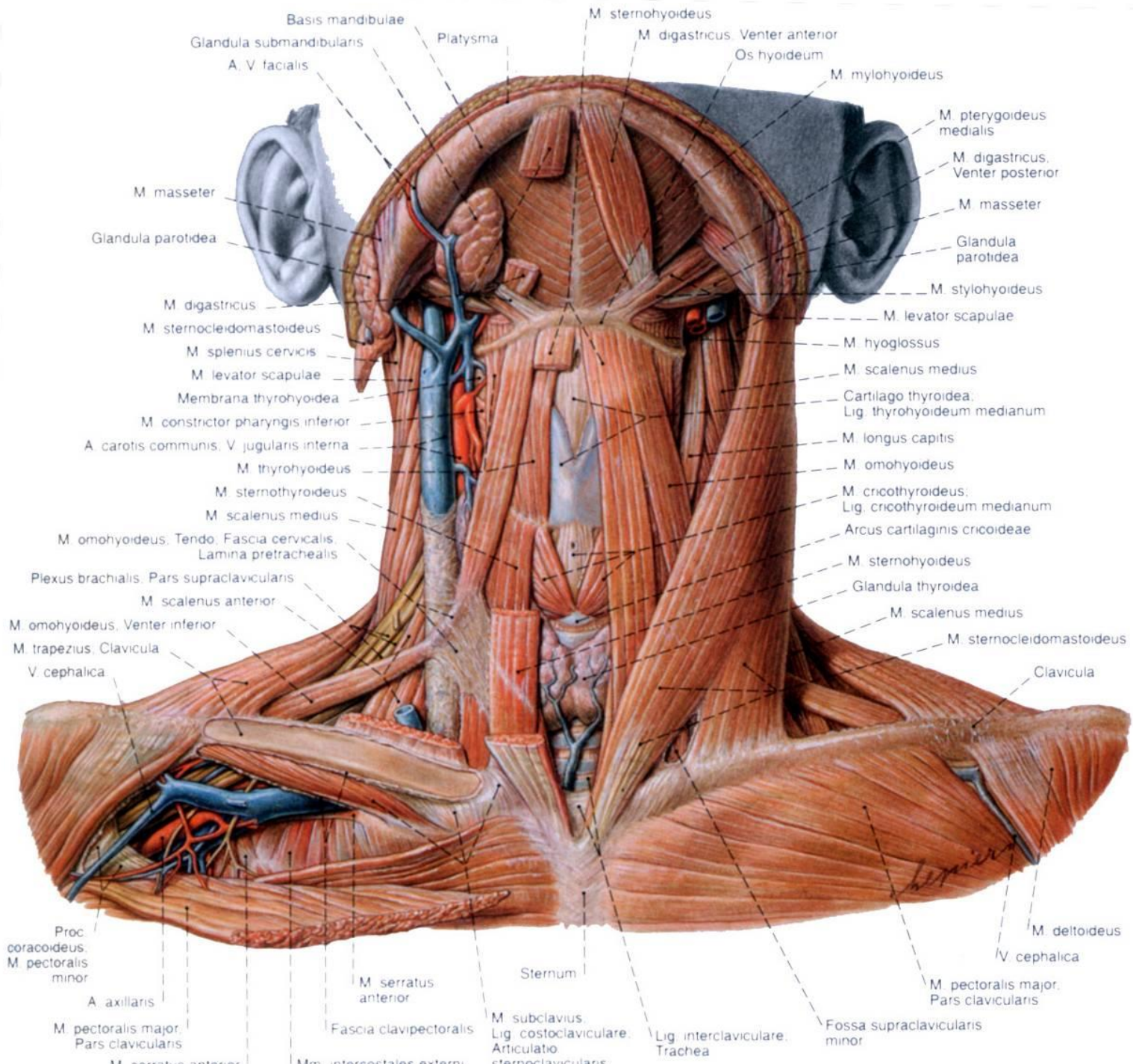
Signature
2005

Infracoroidalis terek

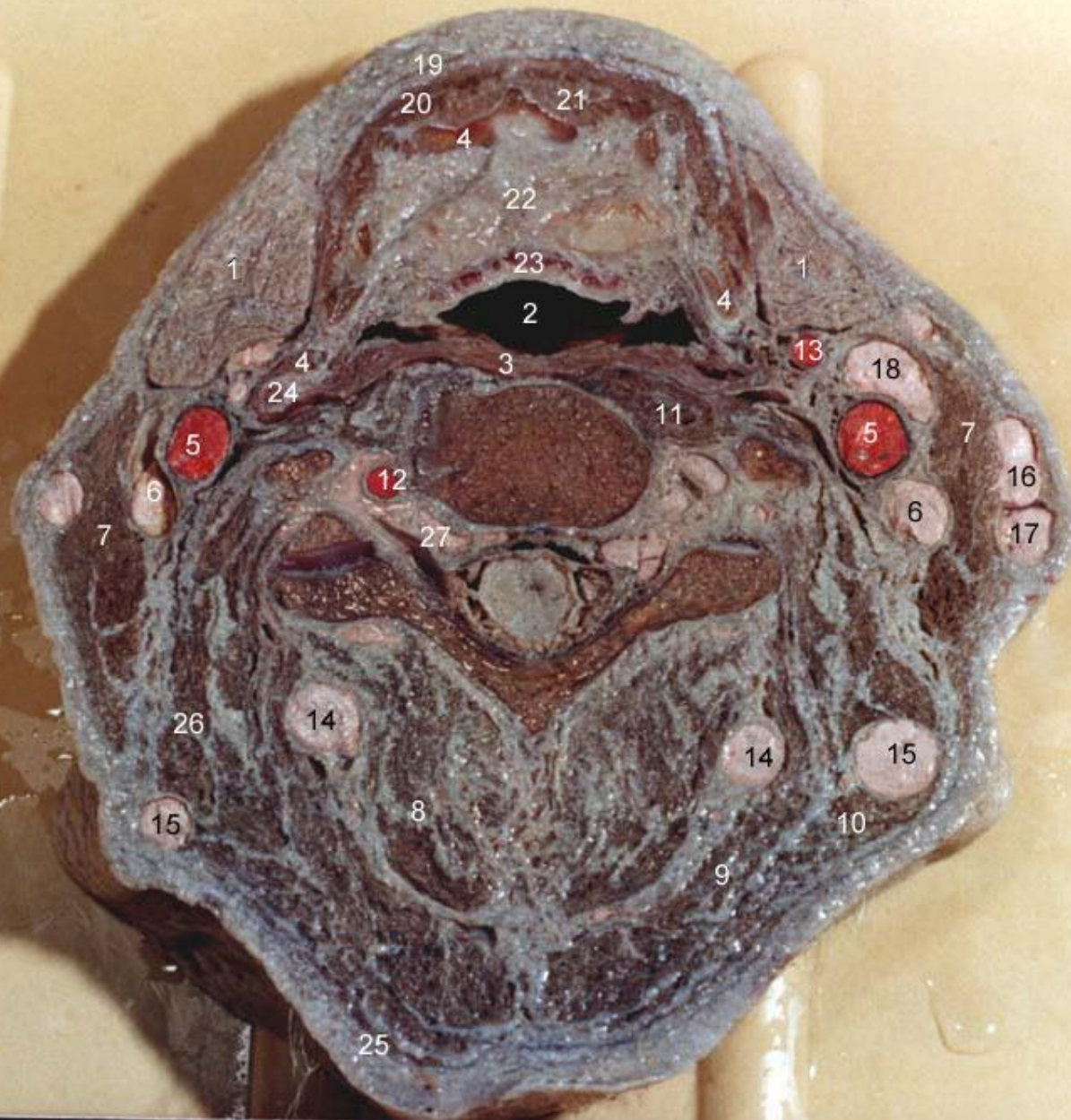
A nyak kötőszövetes terei





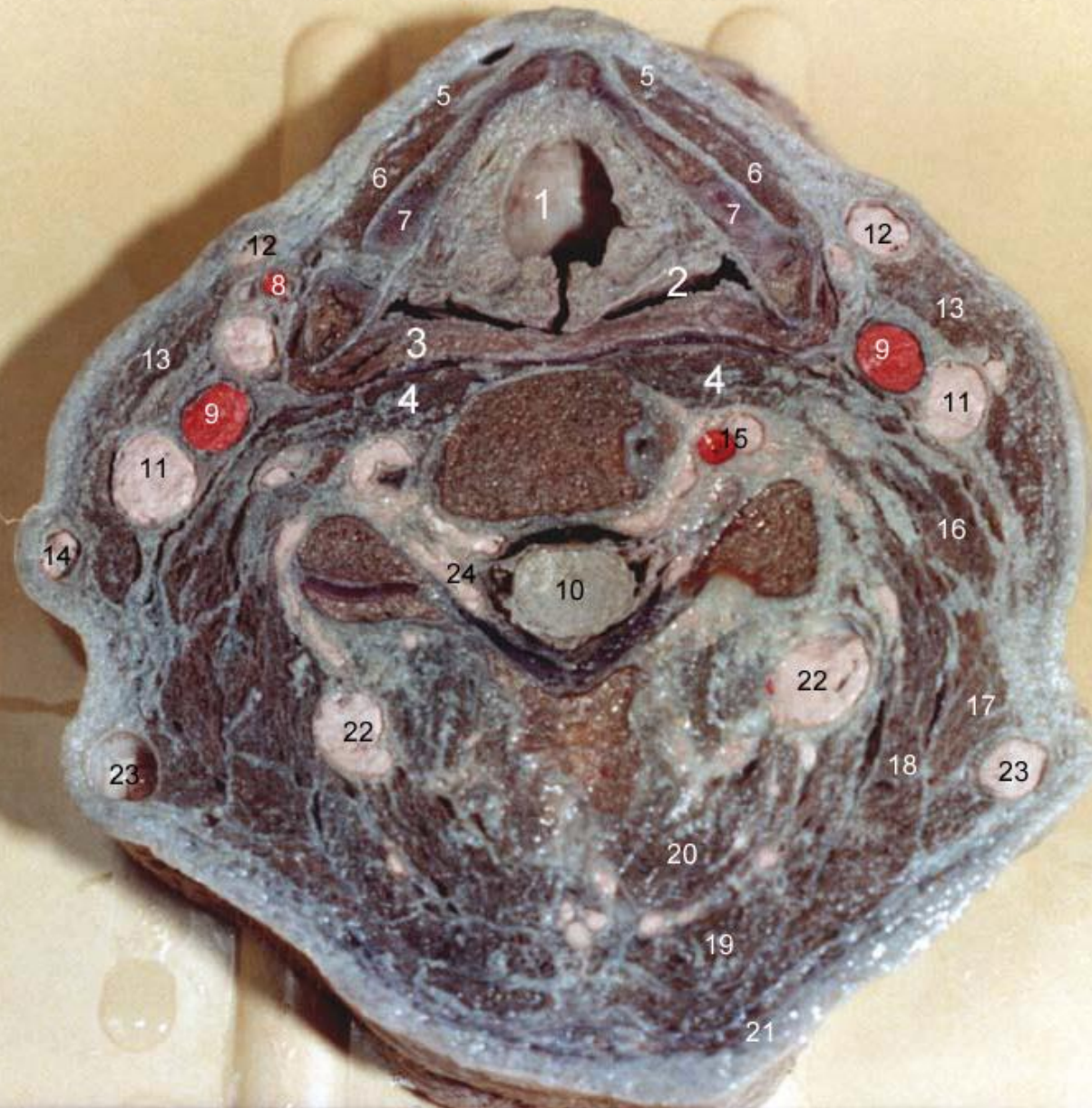






1. Glandula submandibularis
2. Aditus laryngis
3. M. constrictor pharyngis
4. Os hyoideum
5. A. car. communis
6. V. jugularis int.
7. M. sternocleidomastoideus
8. M. semispinalis cervicis
9. M. semispinalis capitis
10. M. splenius cerv. et cap.
11. M. longus capitis et colli
12. A. vertebralis
13. A. thyroidea superior
14. V. cervicalis profunda
15. V. occipitalis
16. V. jugularis externa
17. V. auricularis post.
18. V. facialis
19. Platysma
20. M. mylohyoideus
21. M. geniohyoideus
22. Corp. adiposum laryngis
23. Epiglottis
24. Cornu sup. cart. thy.
25. M. trapezius
26. M. levator scapulae
27. Plexus venosus vert. int.

Safwan Alham
2005



1. Larynx
2. Pharynx
3. M. constrictor pharyngis inf.
4. M. longus colli
5. M. sternohyoideus
6. M. omohyoideus
7. Cartilago thyroidea
8. A. thyroidea sup.
9. A. carotis comm.
10. Gericvelö
11. V. jugularis int.
12. V. jugularis ant.
13. M. sternocleidomastoideus
14. V. jugularis ext.
15. A. et v. vertebralis
16. M. scalenus medius
17. M. levator scapulae
18. M. splenius cervicis et capitis
19. M. semispinalis capitis
20. M. semispinalis cervicis
21. M. trapezius
22. V. cervicalis profunda
23. V. occipitalis
24. Plexus venosus vert. int.

Sybilina Khan
2005