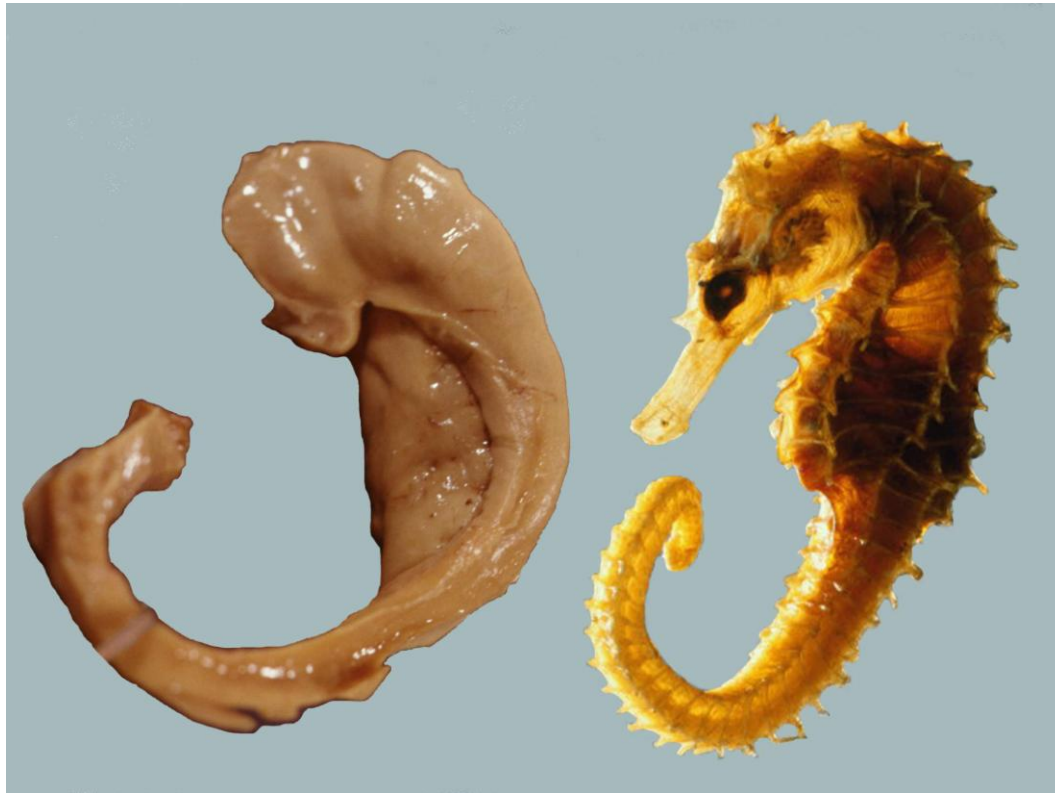
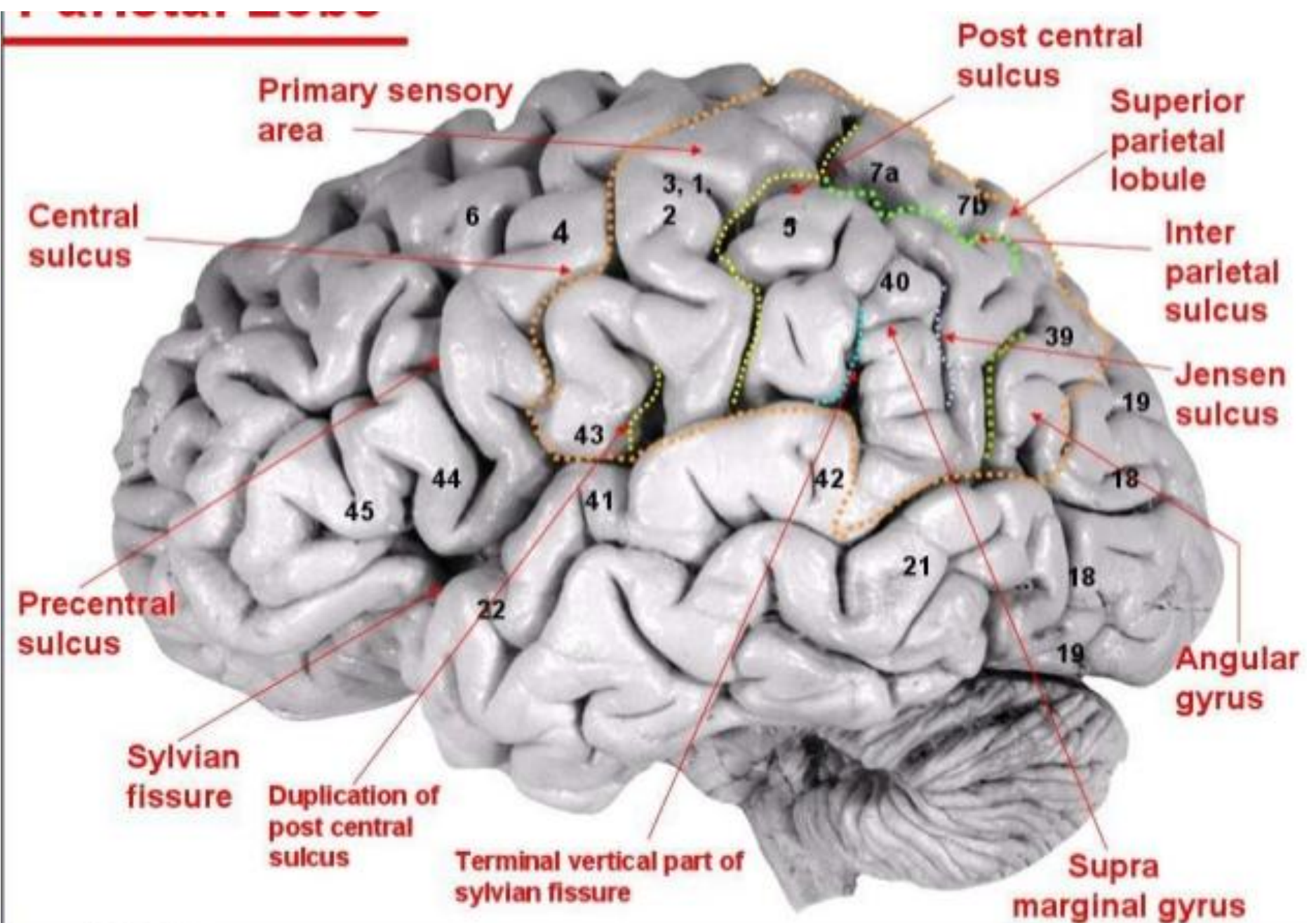


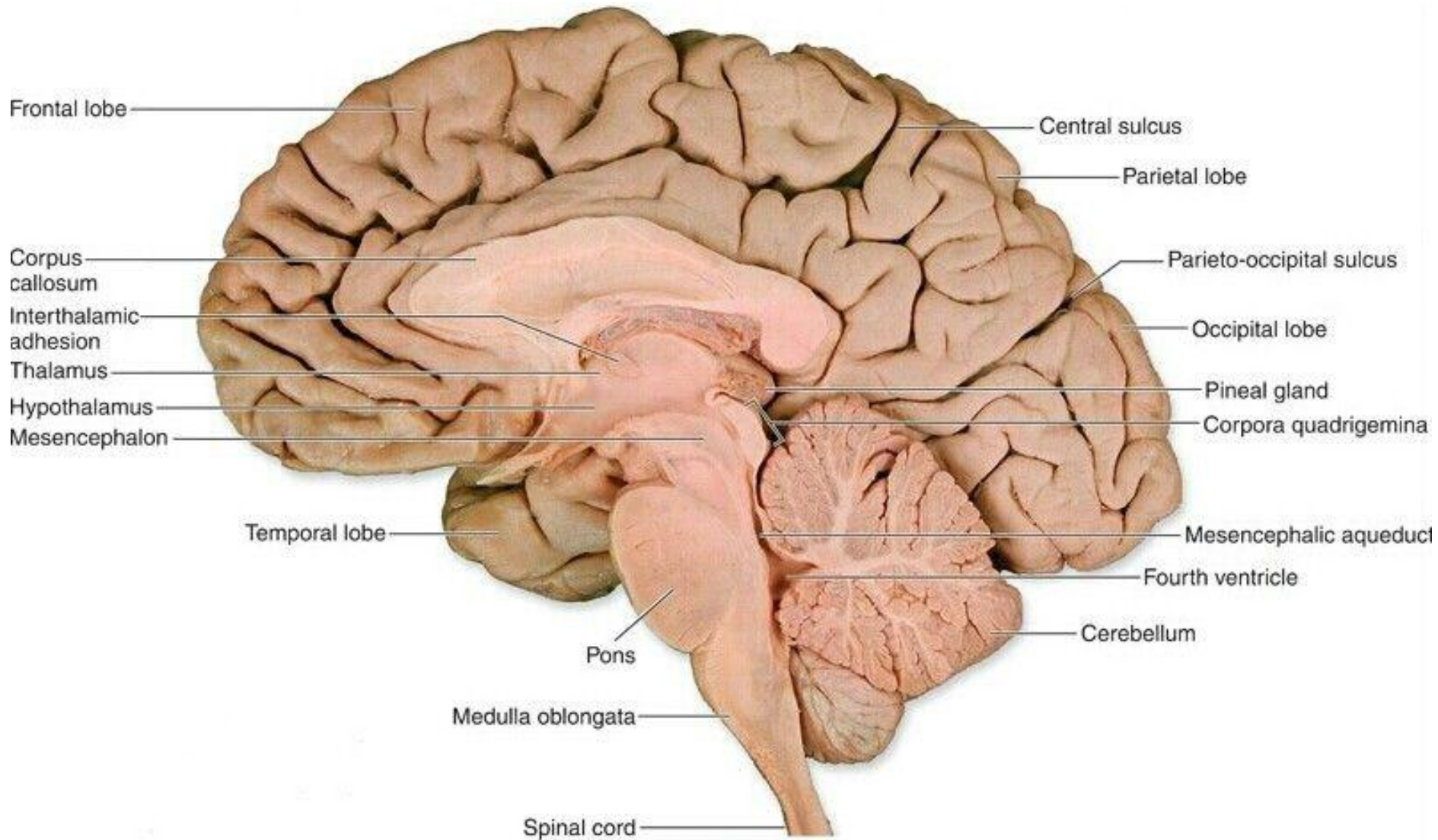
# **SAMPLE IMAGES TO AID THE PREPARATION FOR THE SEMIFINAL EXAMINATION**

**EM II**

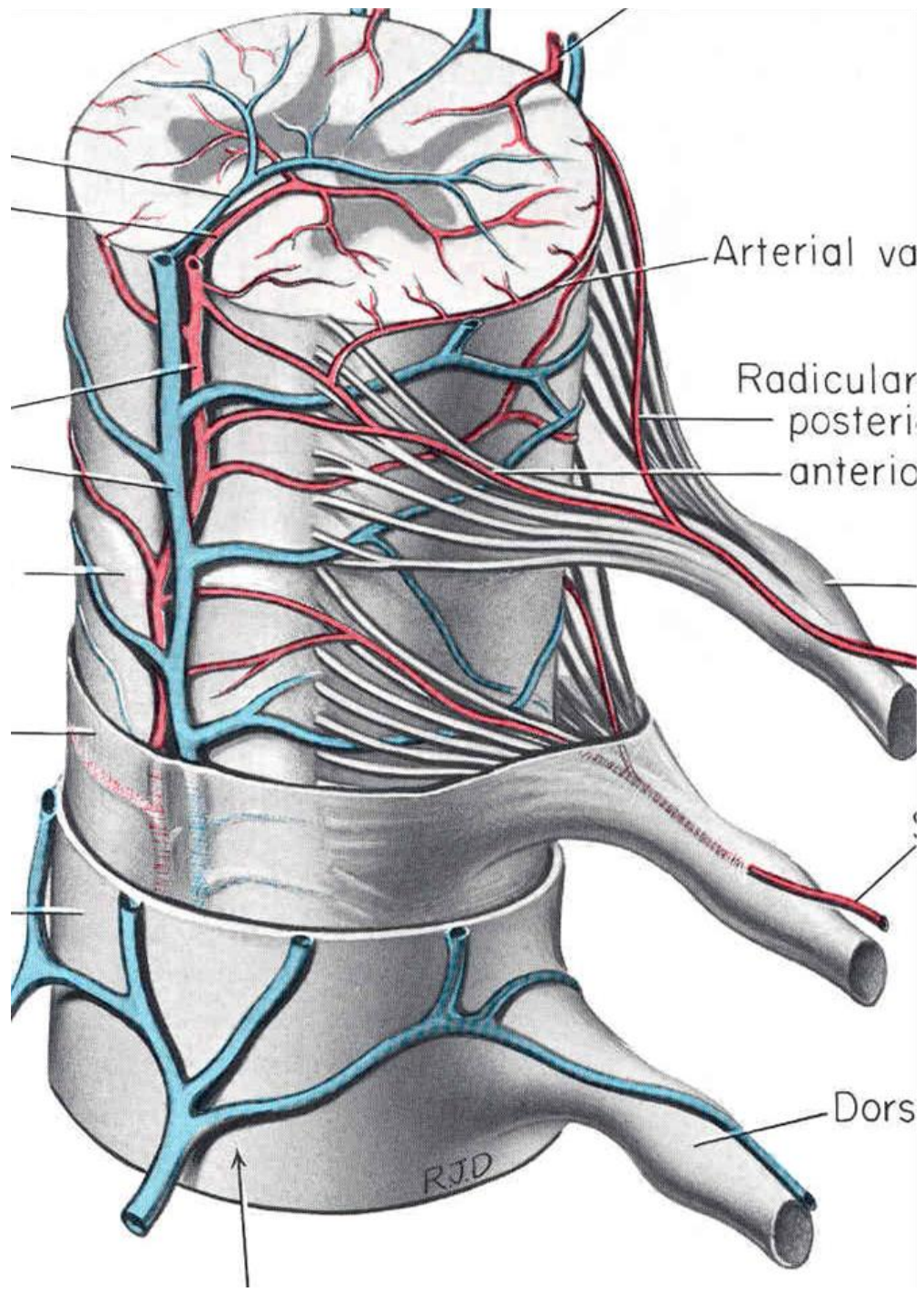
**ED II**

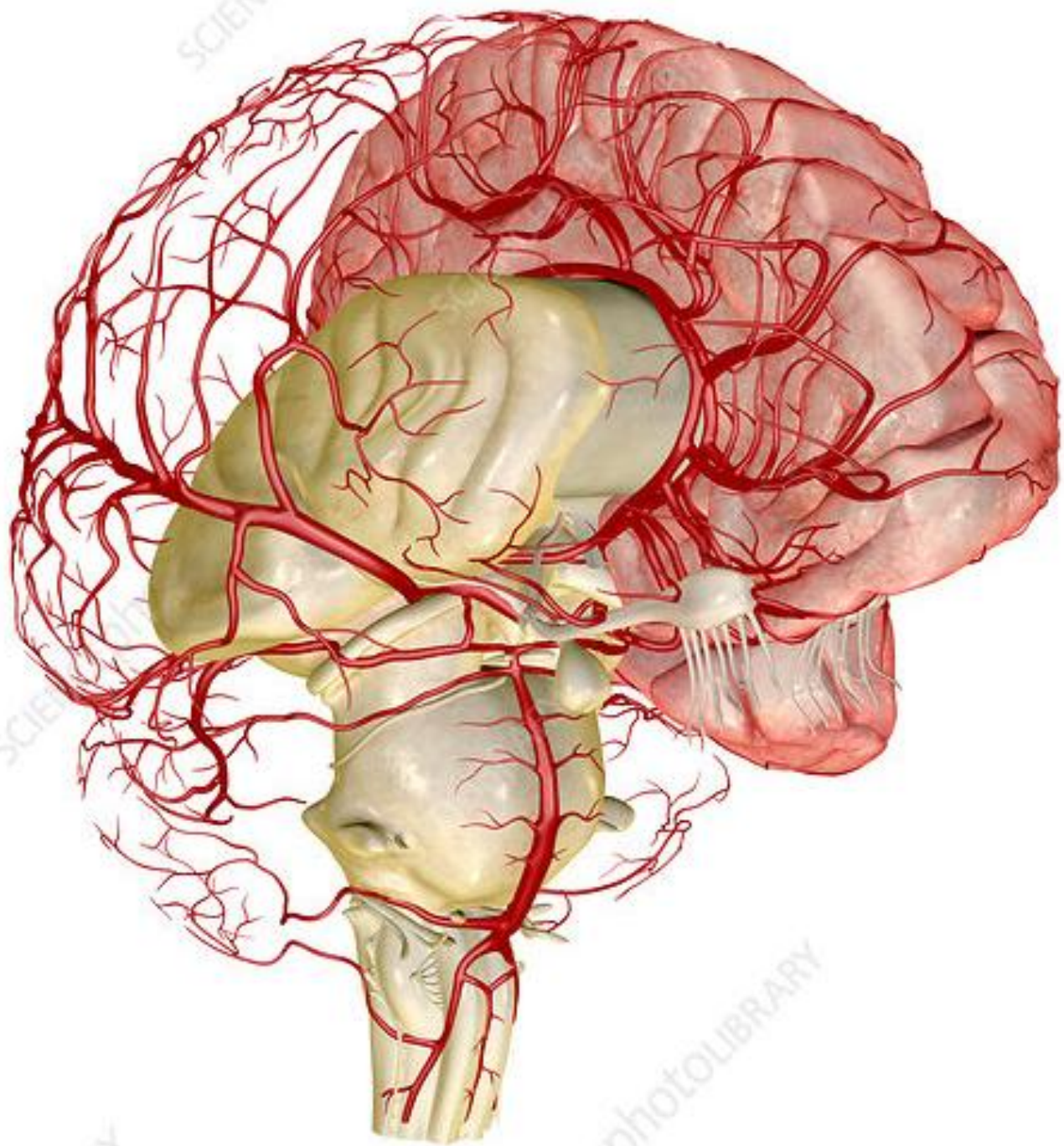






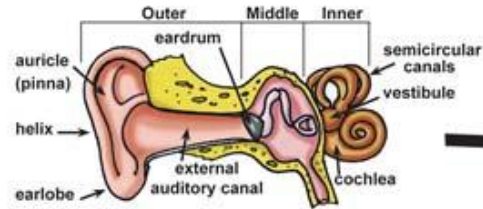






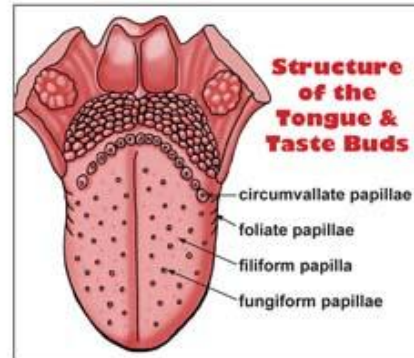
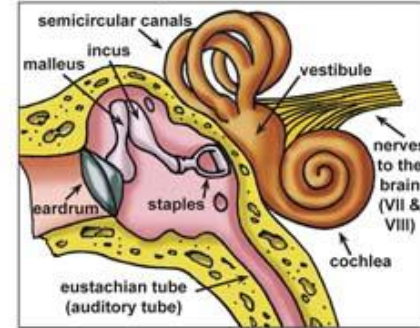


# Special Senses



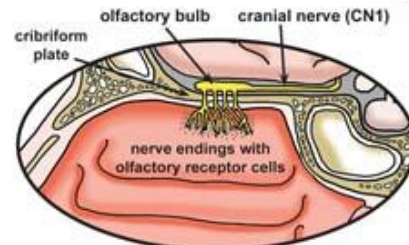
## Structure of the Ear

### Close Up of Middle and Inner Ear

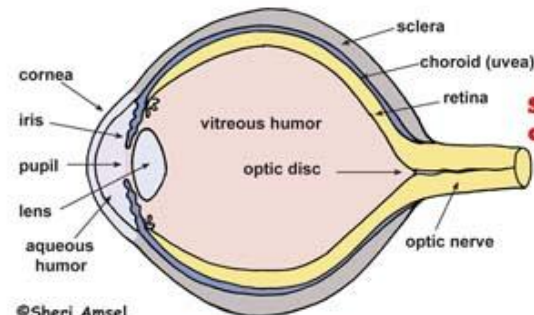
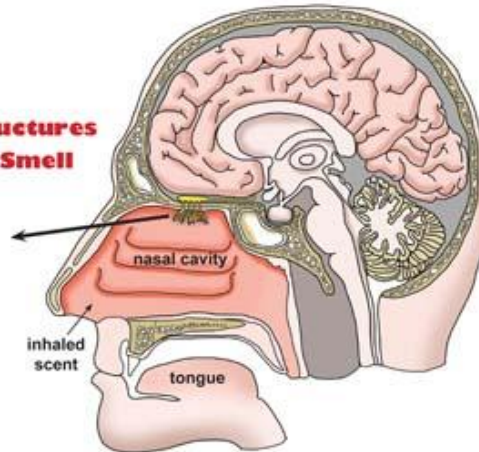


## Structure of the Tongue & Taste Buds

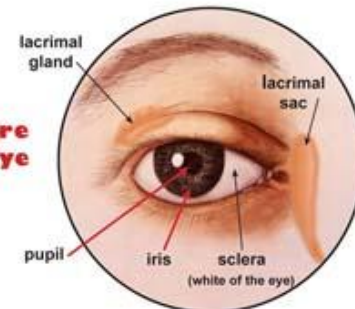
## Structures of Smell



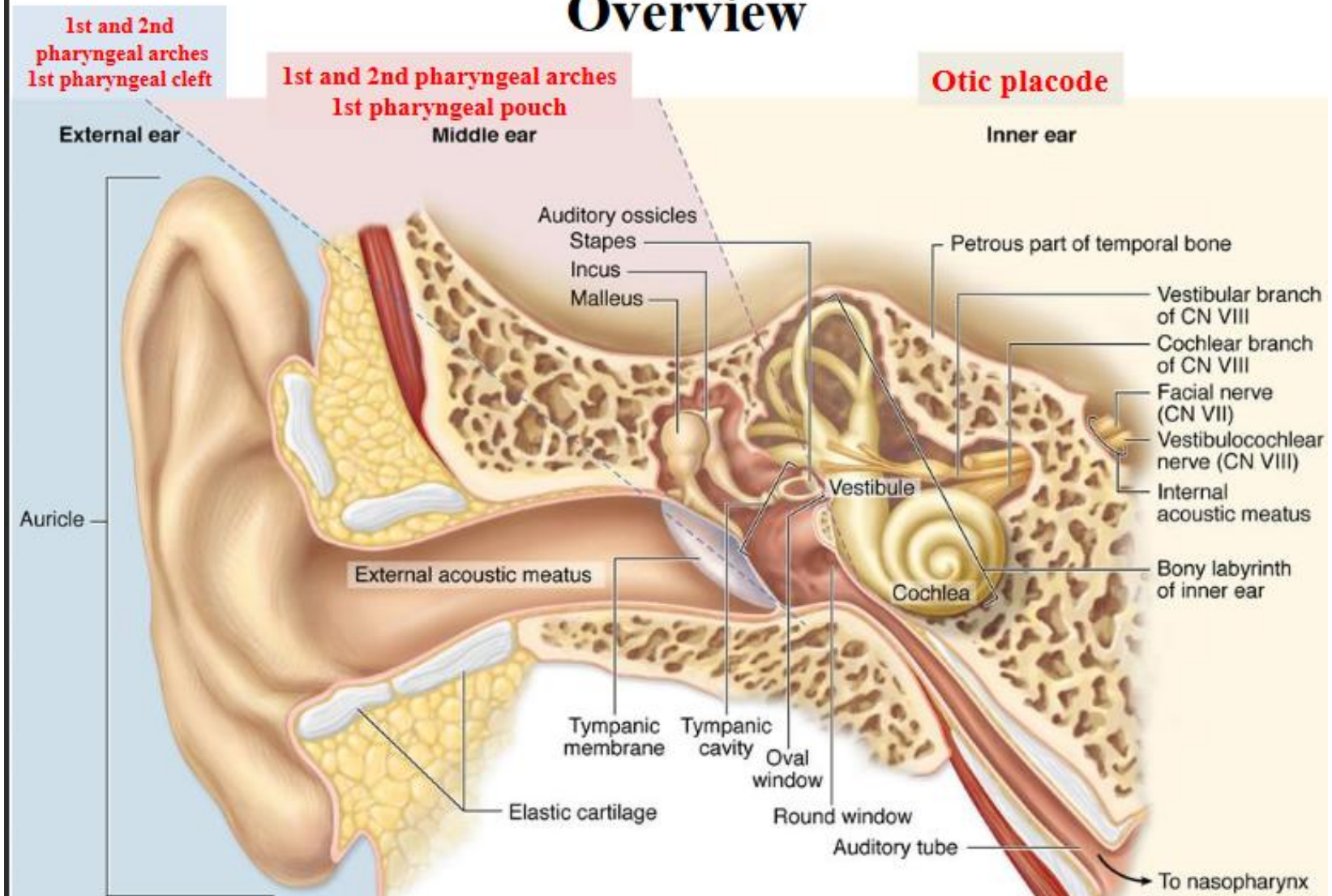
nasal cavity lined with moist, mucous membrane – olfactory membrane



## Structure of the Eye



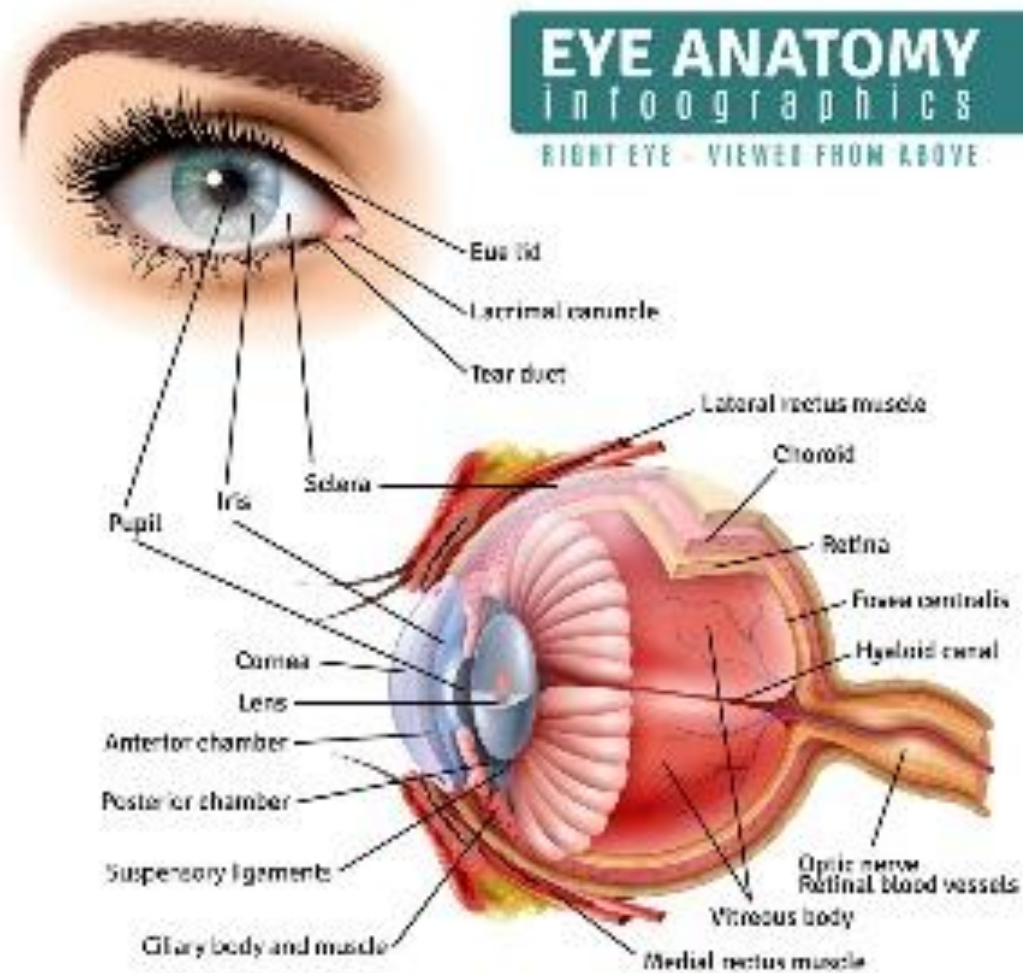
# Overview



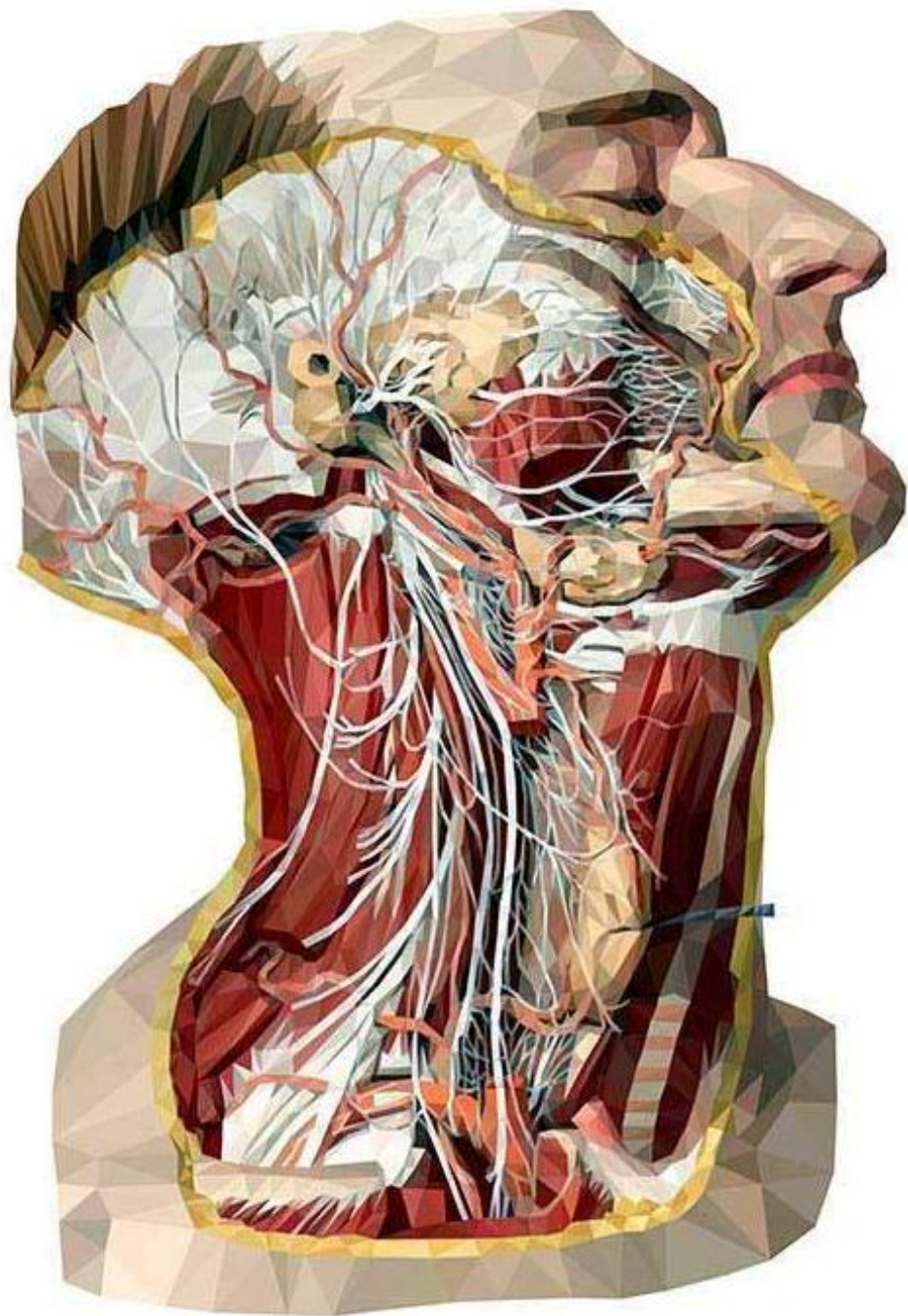
# EYE ANATOMY

## infographics

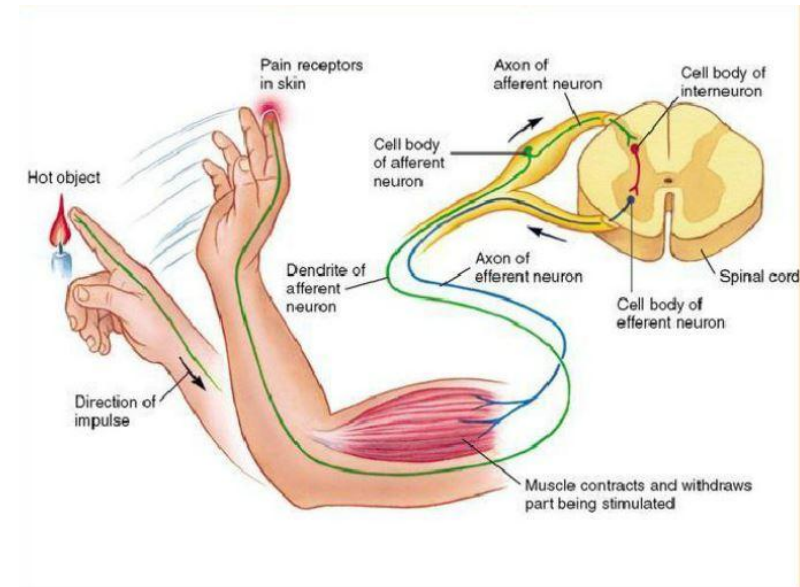
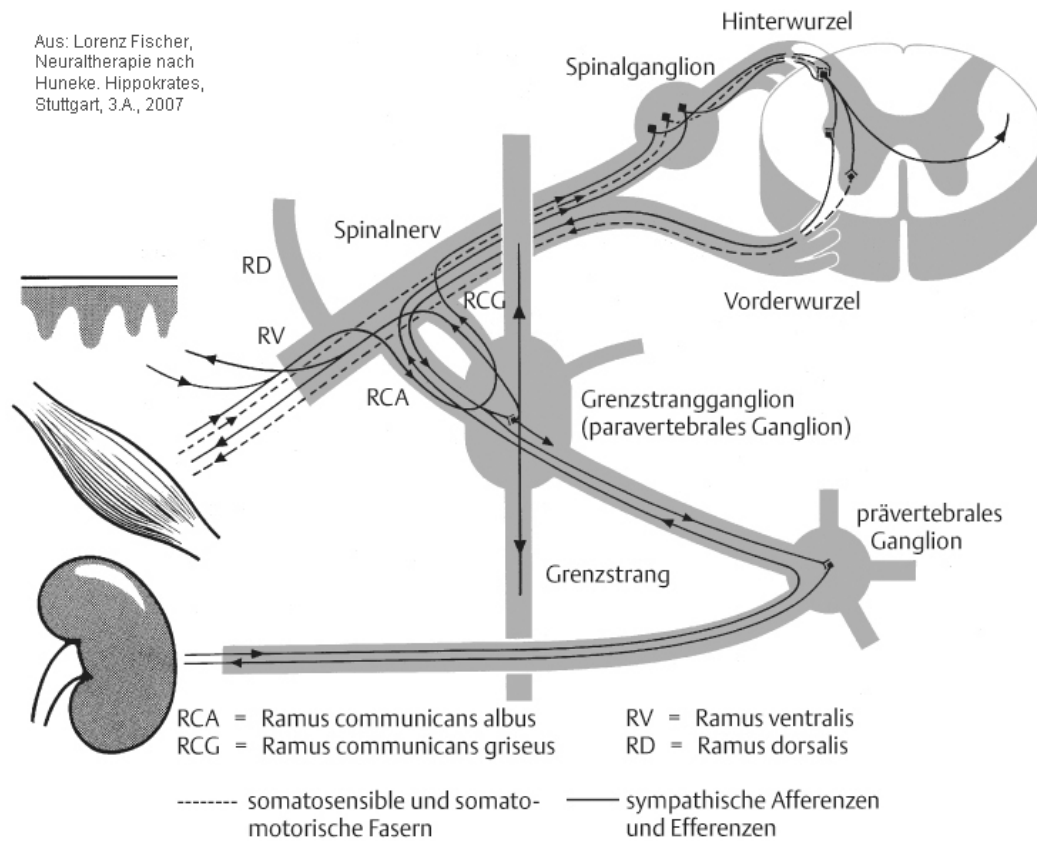
RIGHT EYE - VIEWED FROM ABOVE



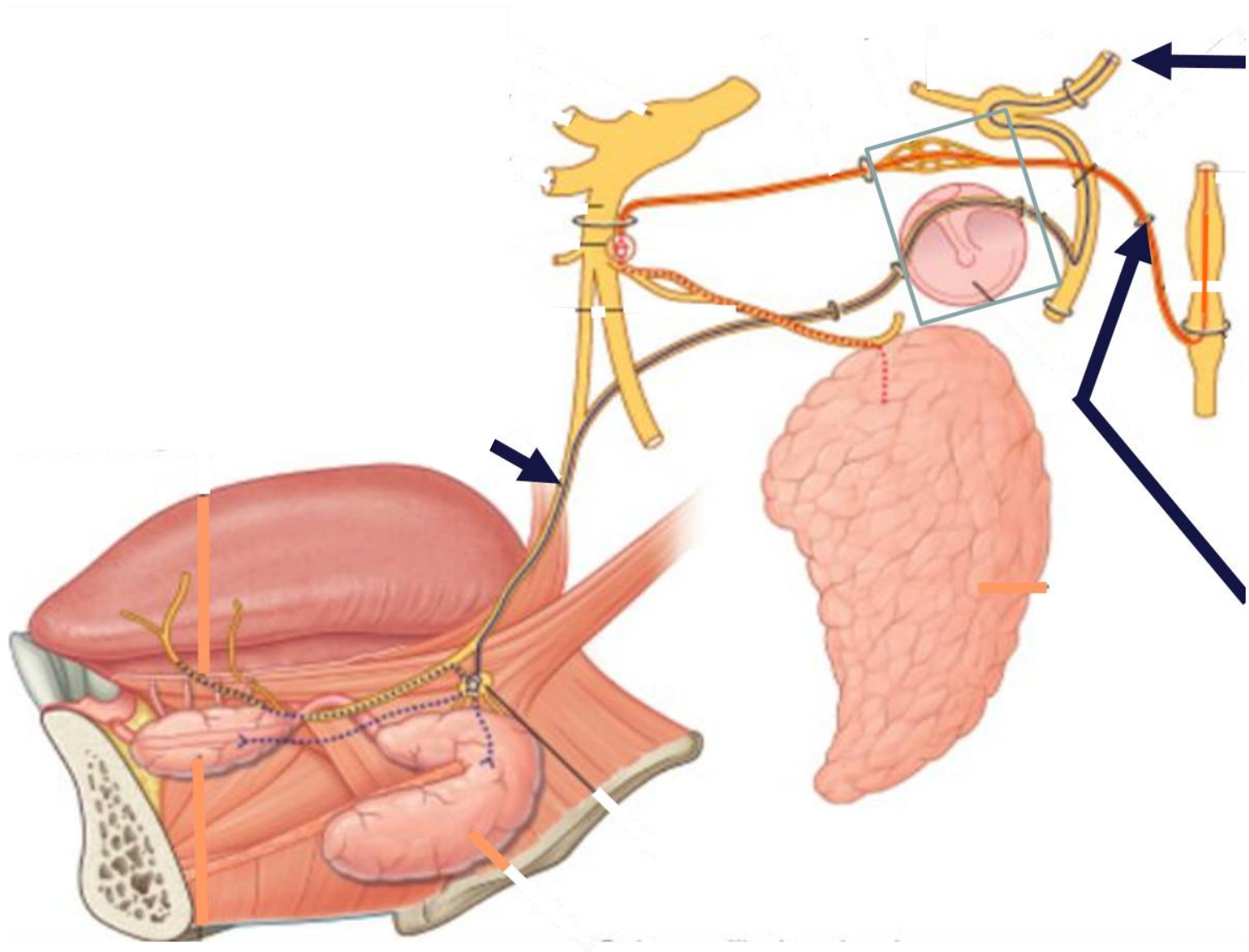


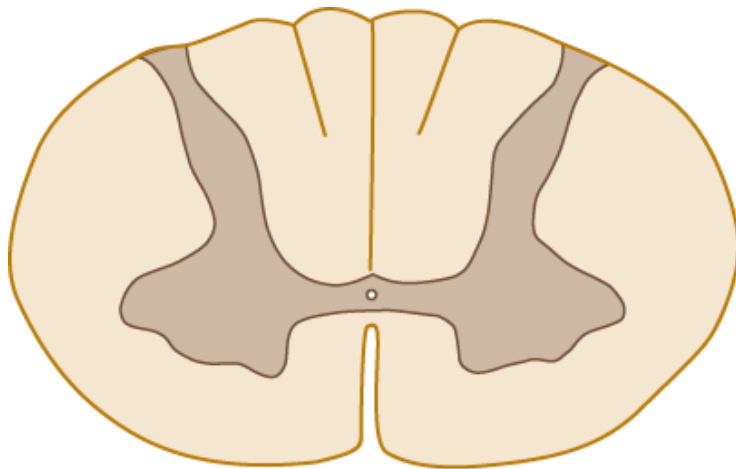


Aus: Lorenz Fischer,  
Neuraltherapie nach  
Huneke. Hippokrates,  
Stuttgart, 3.A., 2007

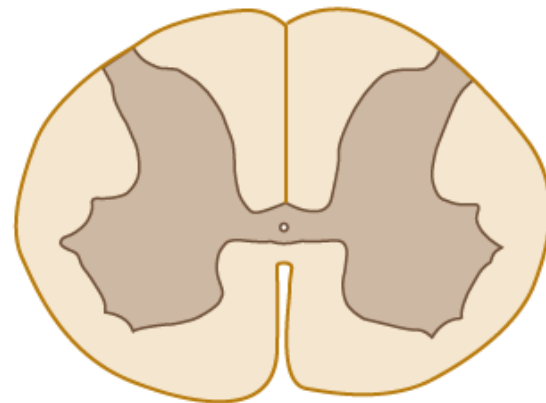




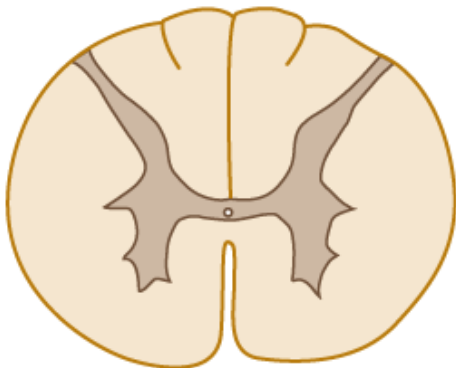




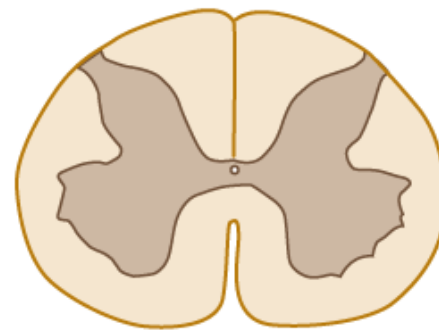
Cervical



Lumbar



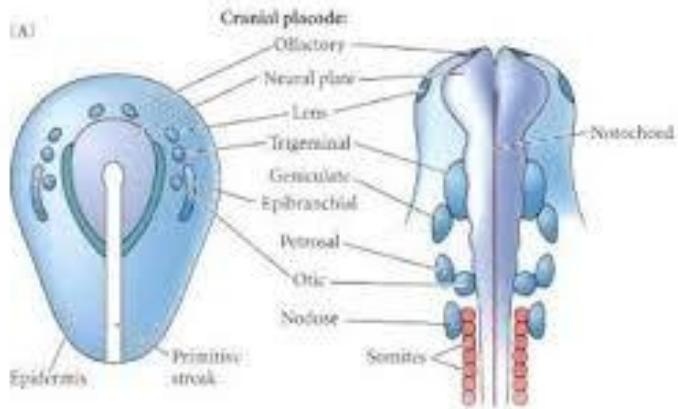
Thoracic



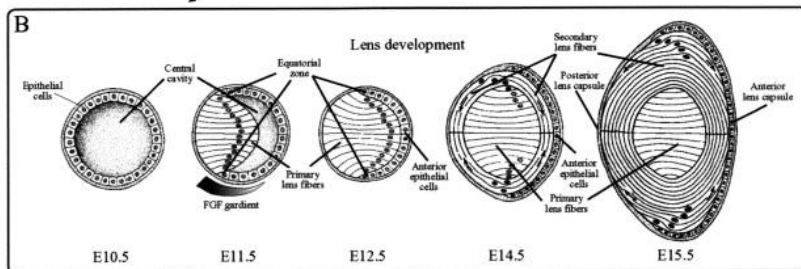
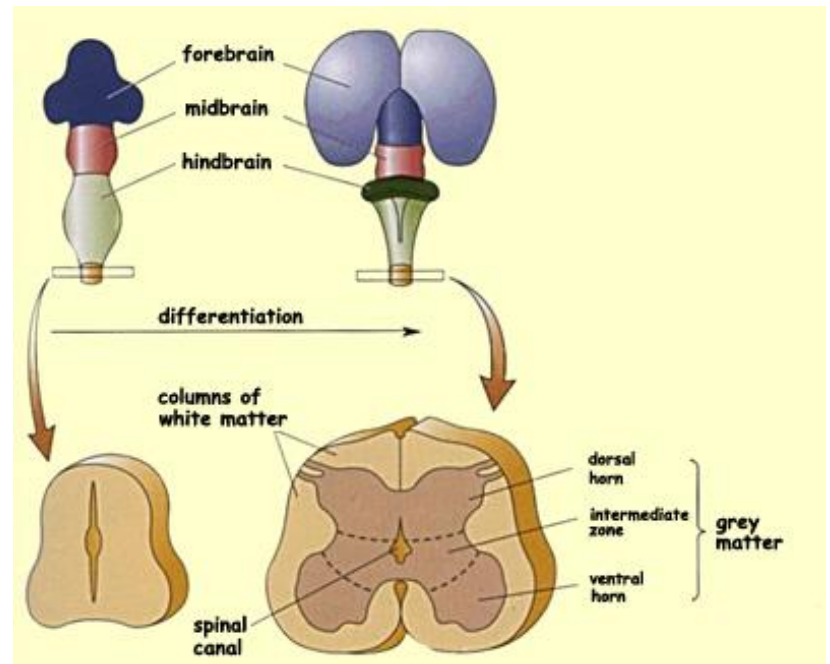
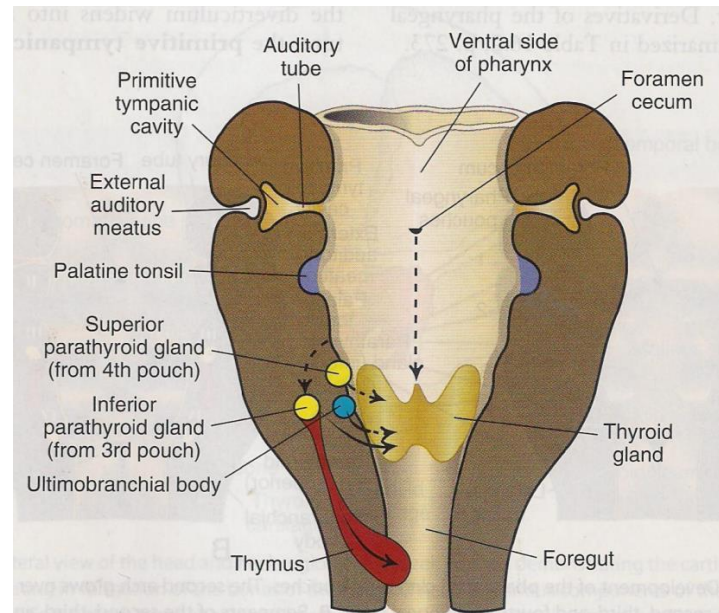
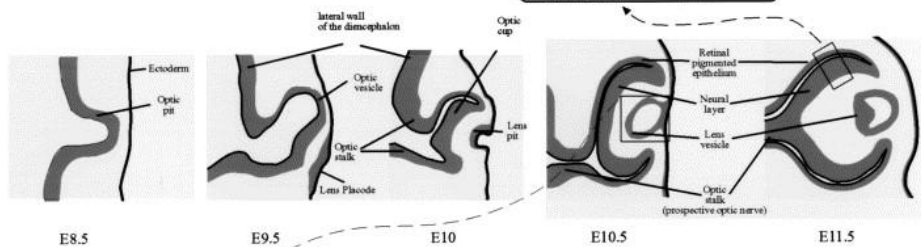
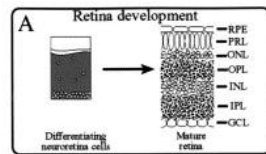
Sacral

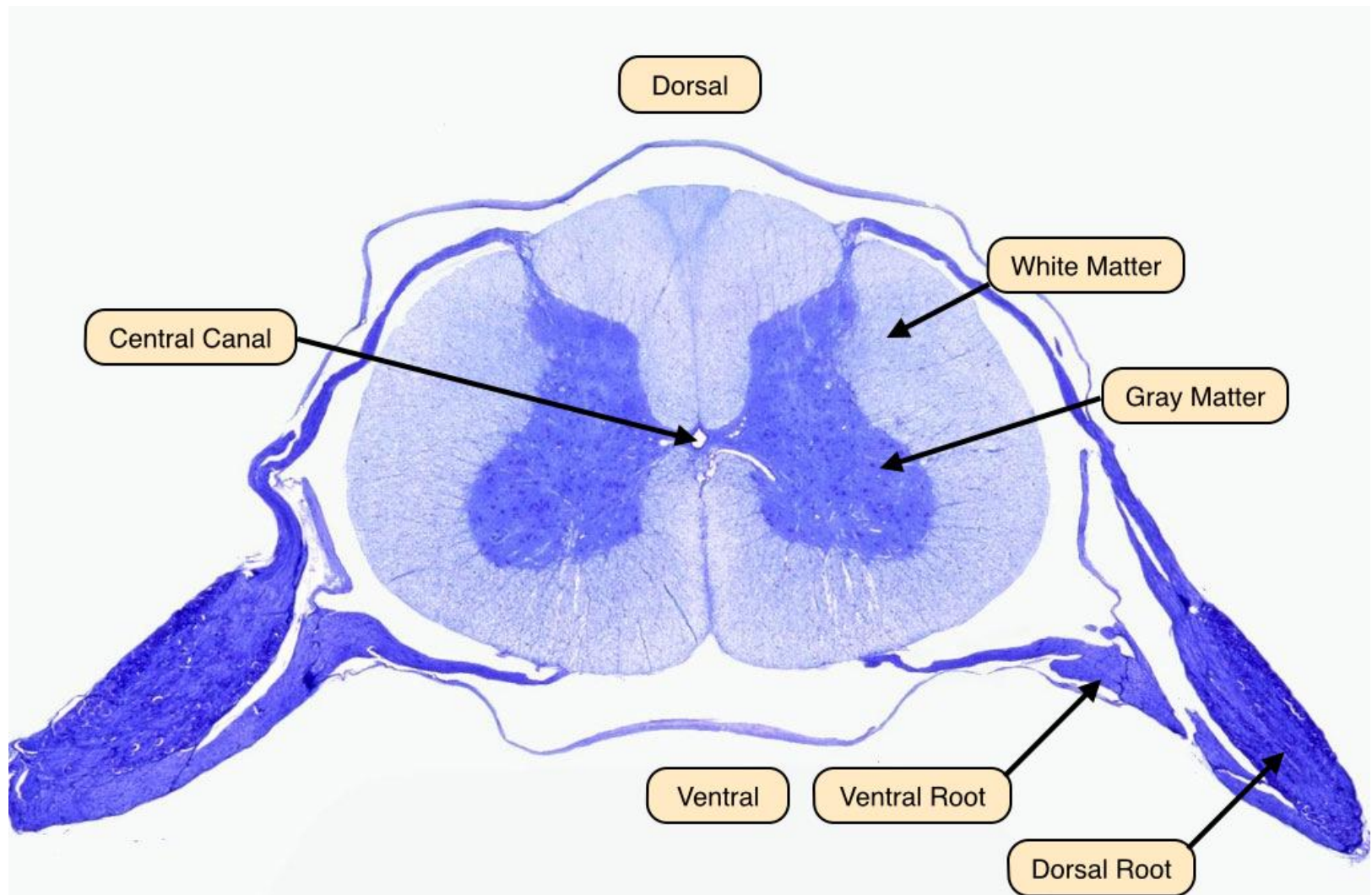
Source: Waxman SG; *Clinical Neuroanatomy: Twenty-Seventh Edition*:  
[www.accessmedicine.com](http://www.accessmedicine.com)  
 Copyright © The McGraw-Hill Companies, Inc. All rights reserved.



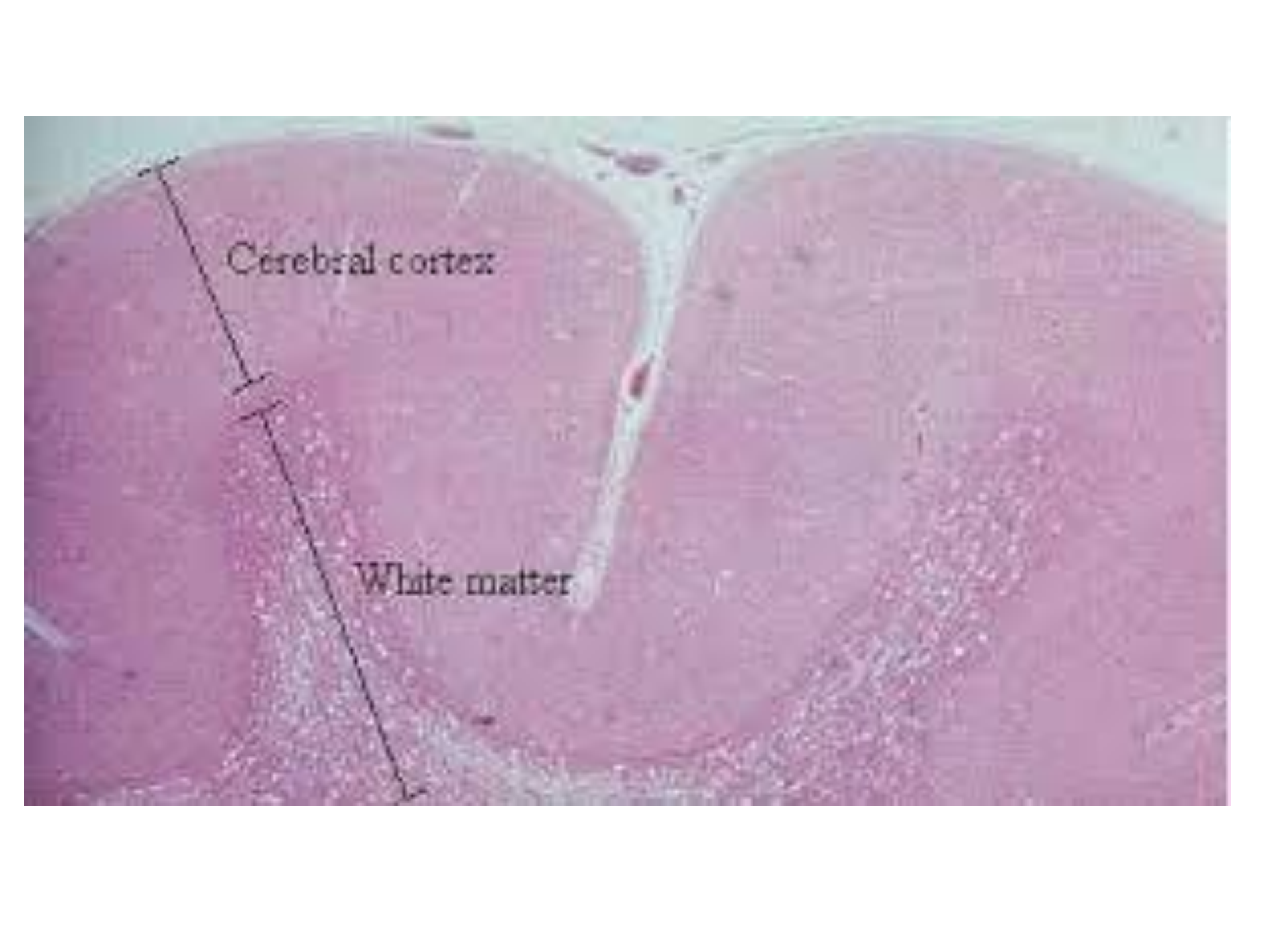


Revised from: The Molecular Biology of the Eye, 2nd ed., by J. D. M. and J. D. M., 1996, Academic Press, New York.





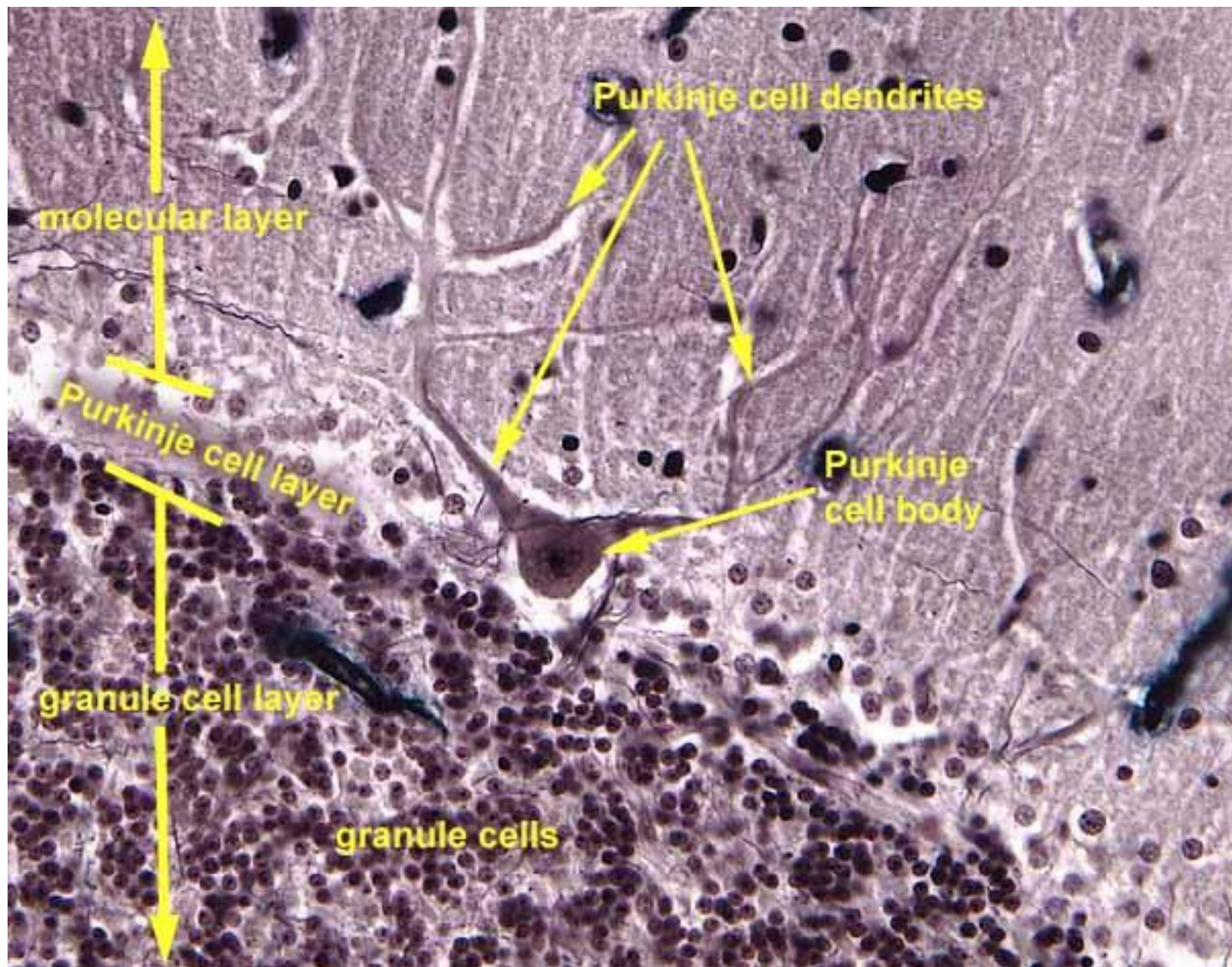




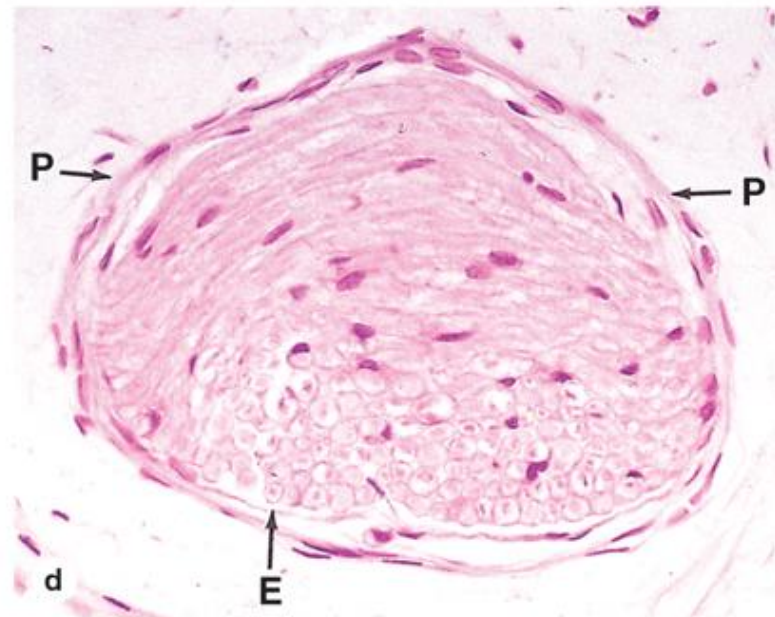
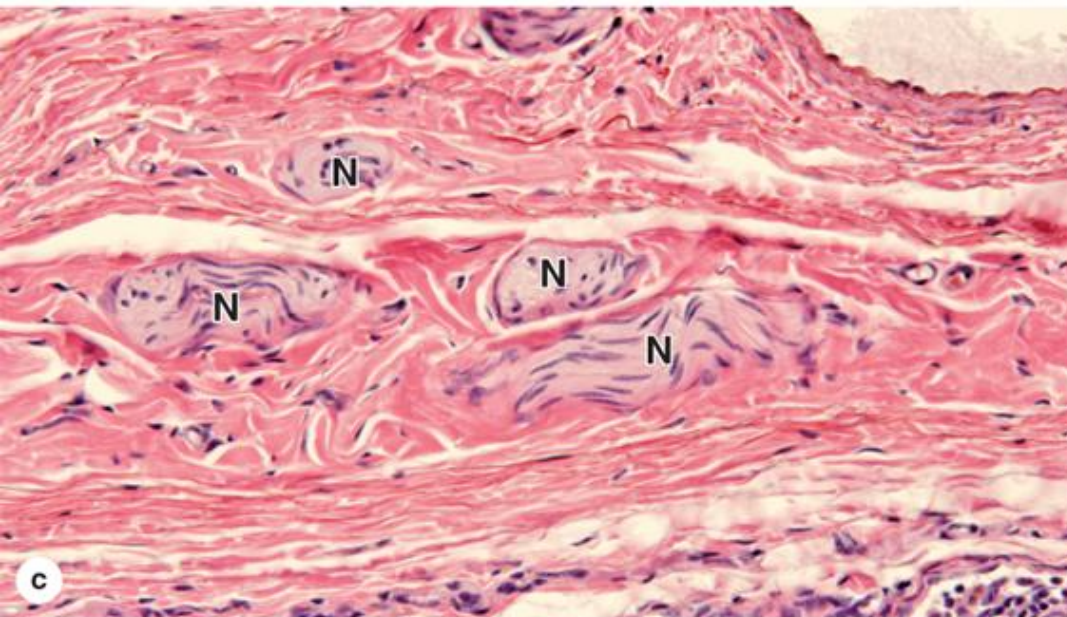
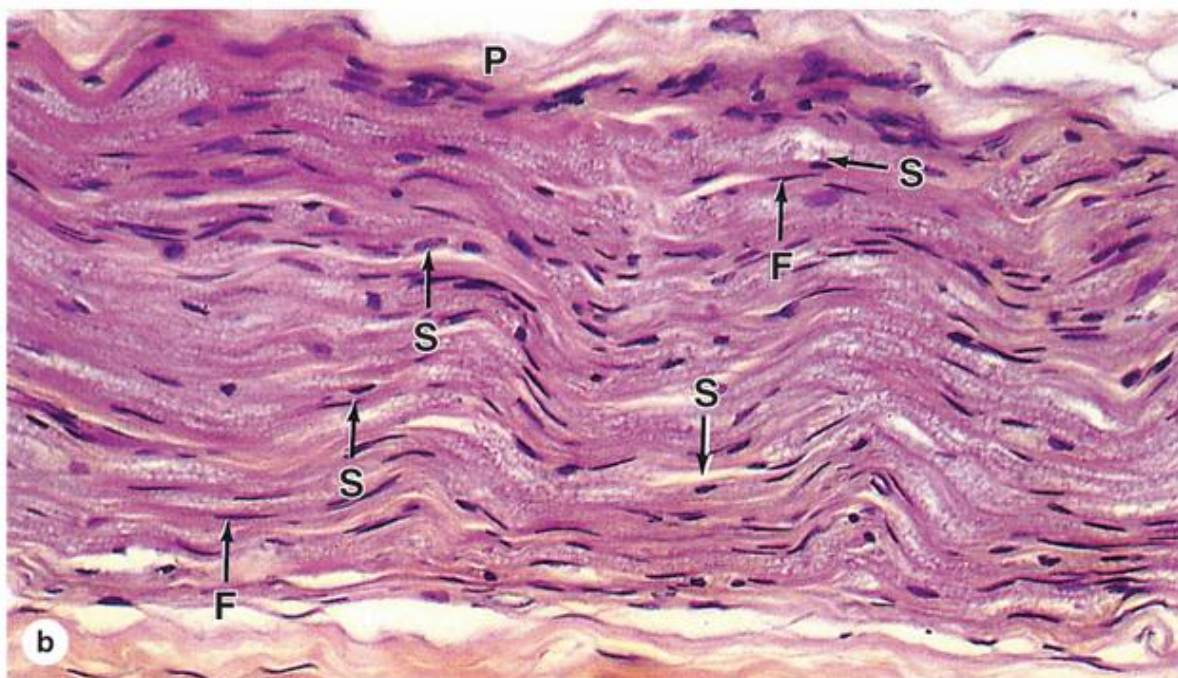
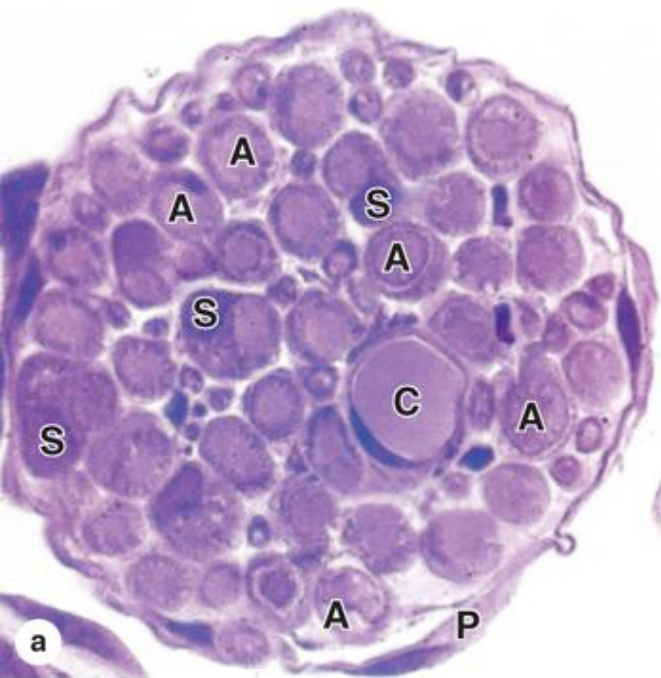
A low-magnification light micrograph of a coronal section of a human brain. The image shows the cerebral cortex, which is the outer layer of the brain, and the underlying white matter. A vertical line with tick marks at the top and bottom is drawn on the left side of the image, spanning the thickness of the cerebral cortex. The text 'Cerebral cortex' is written to the right of this line. Below the line, the text 'White matter' is written. The cerebral cortex appears as a thin, dark, and somewhat granular layer, while the white matter is a lighter, more homogeneous layer. A small, dark, elongated structure, possibly a blood vessel or a small lesion, is visible in the white matter near the center of the image.

Cerebral cortex

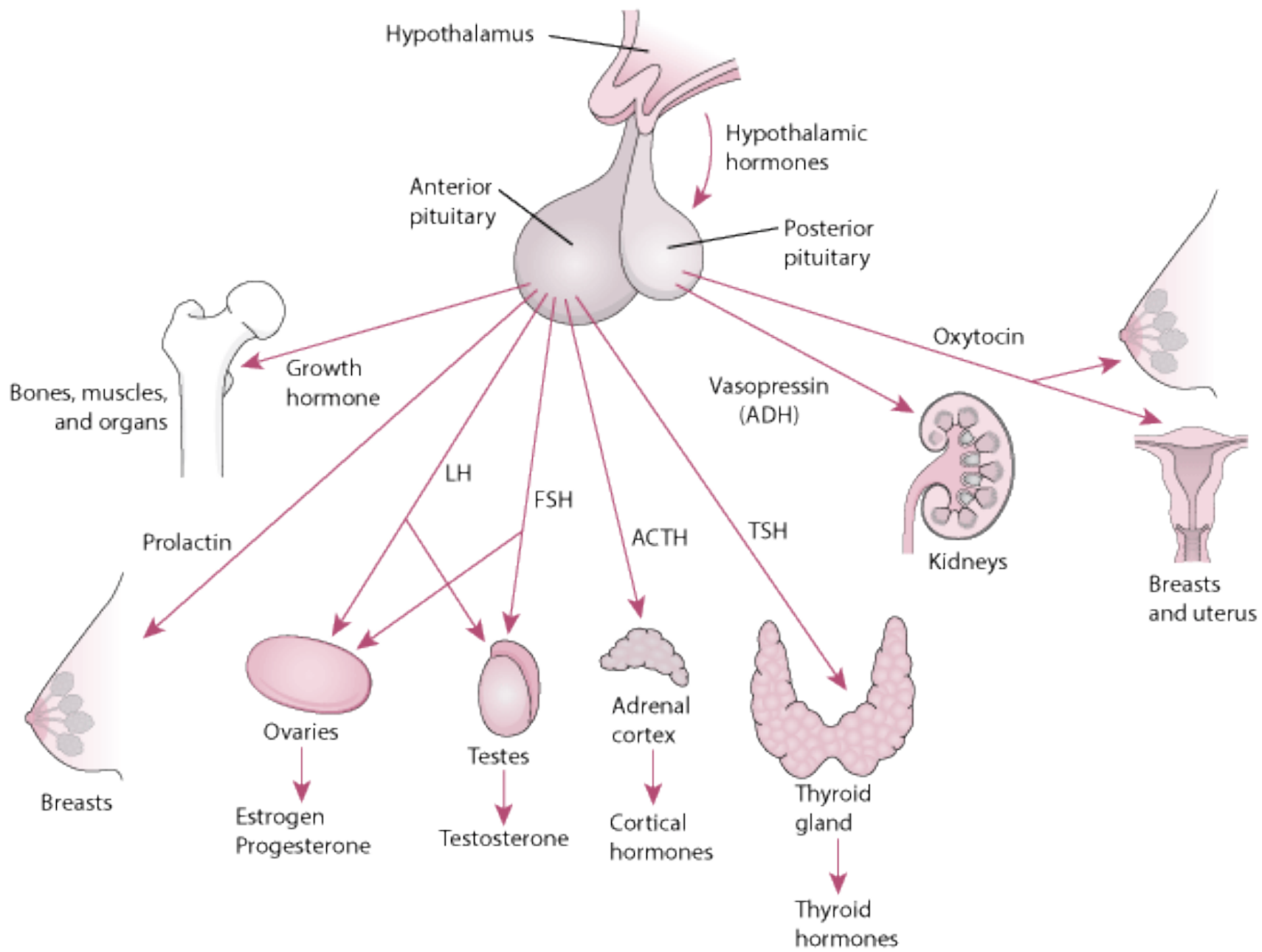
White matter











Below are 6 histology slides of endocrine glands.  
Place the appropriate hormones in the glands they are secreted from.

Oxytocin

ADH

Calcitonin

Growth  
Hormone

Aldosterone

Glucagon

Thyroxine

PTH

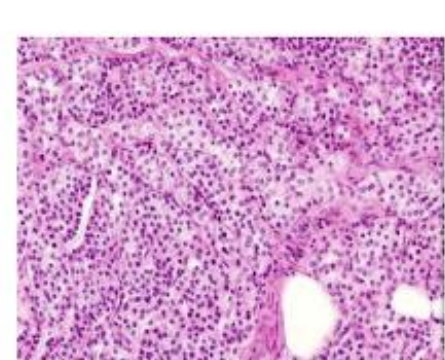
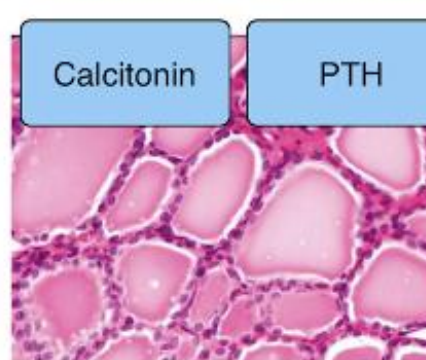
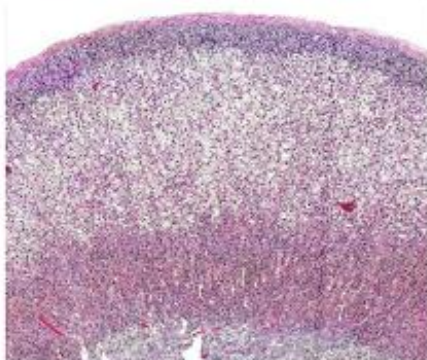
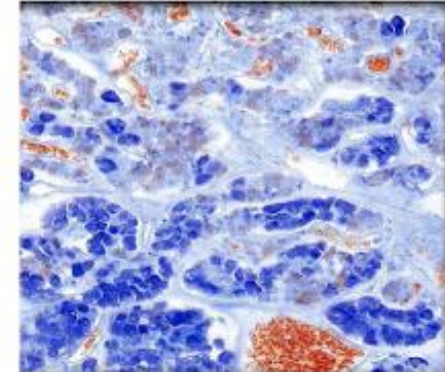
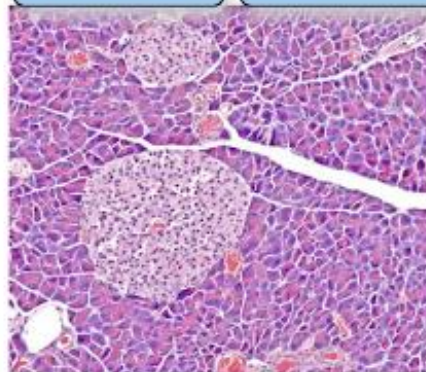
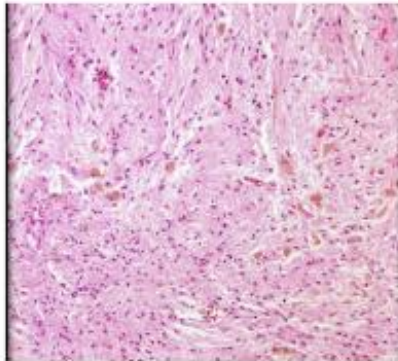
Cortisol

Insulin

FSH

Insulin

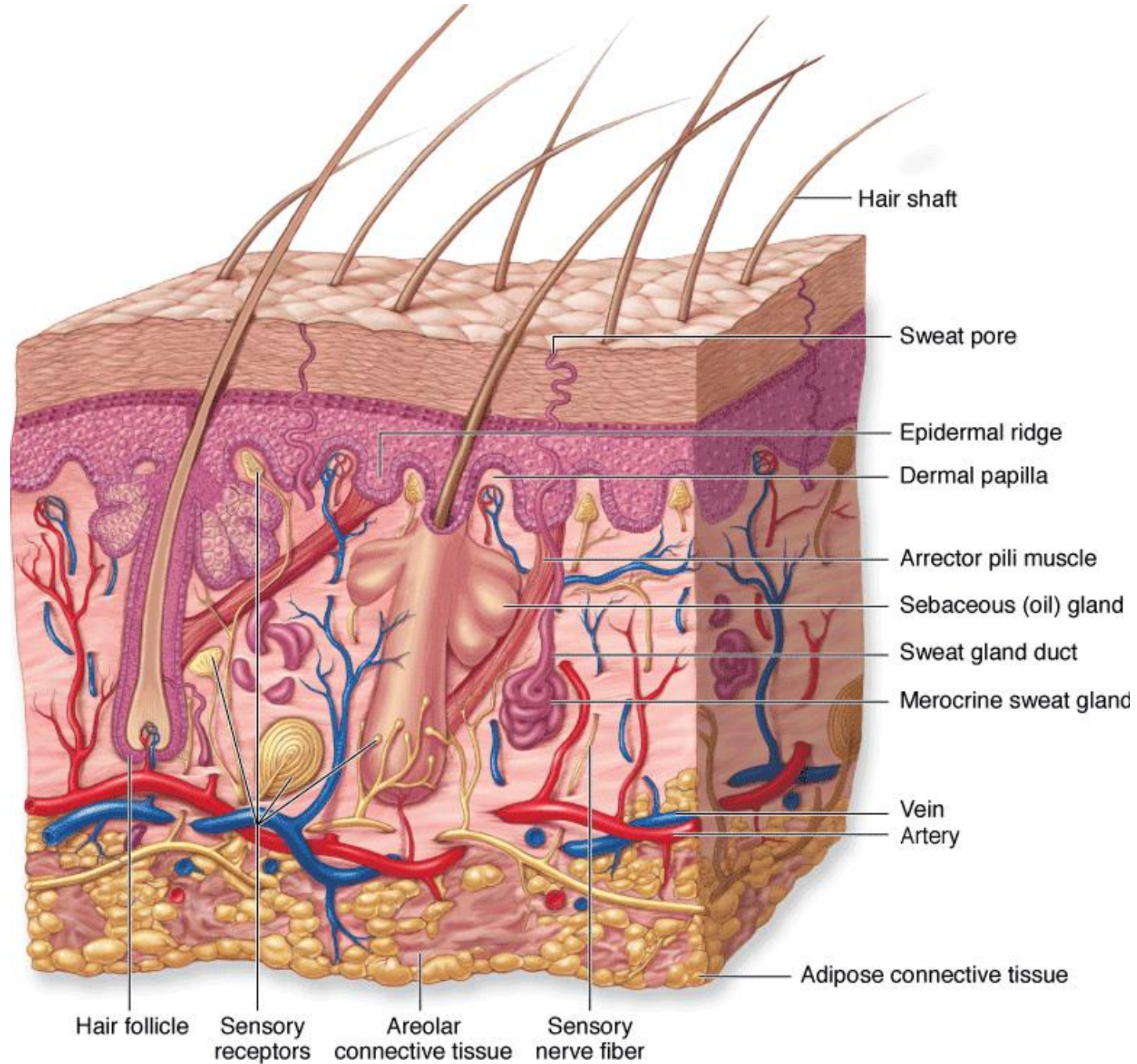
Glucagon



Calcitonin

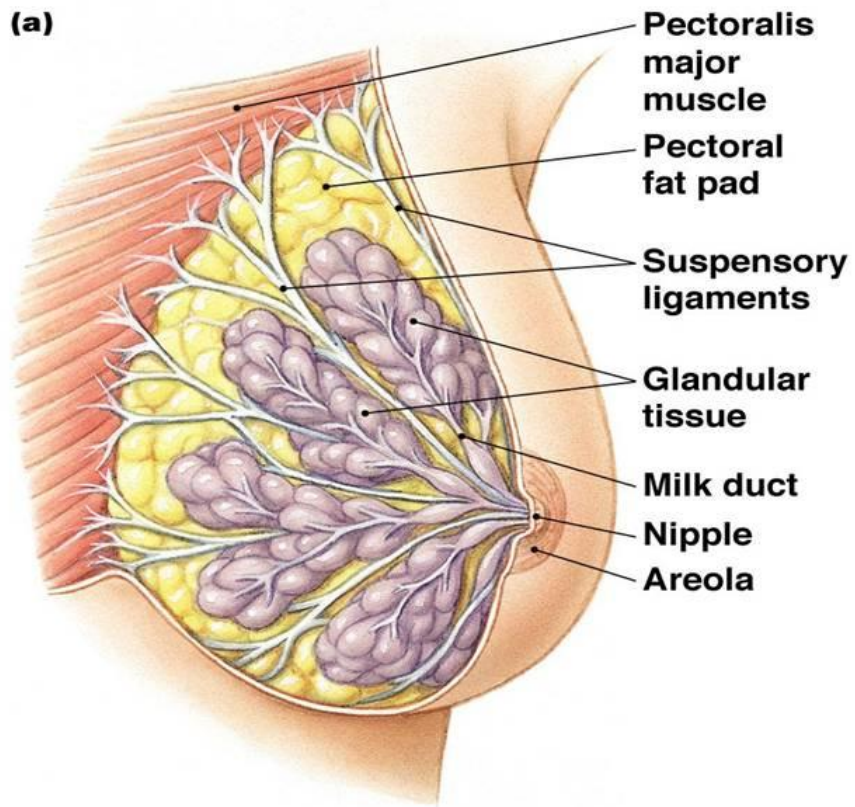
PTH







**(a)**



**(b)**

