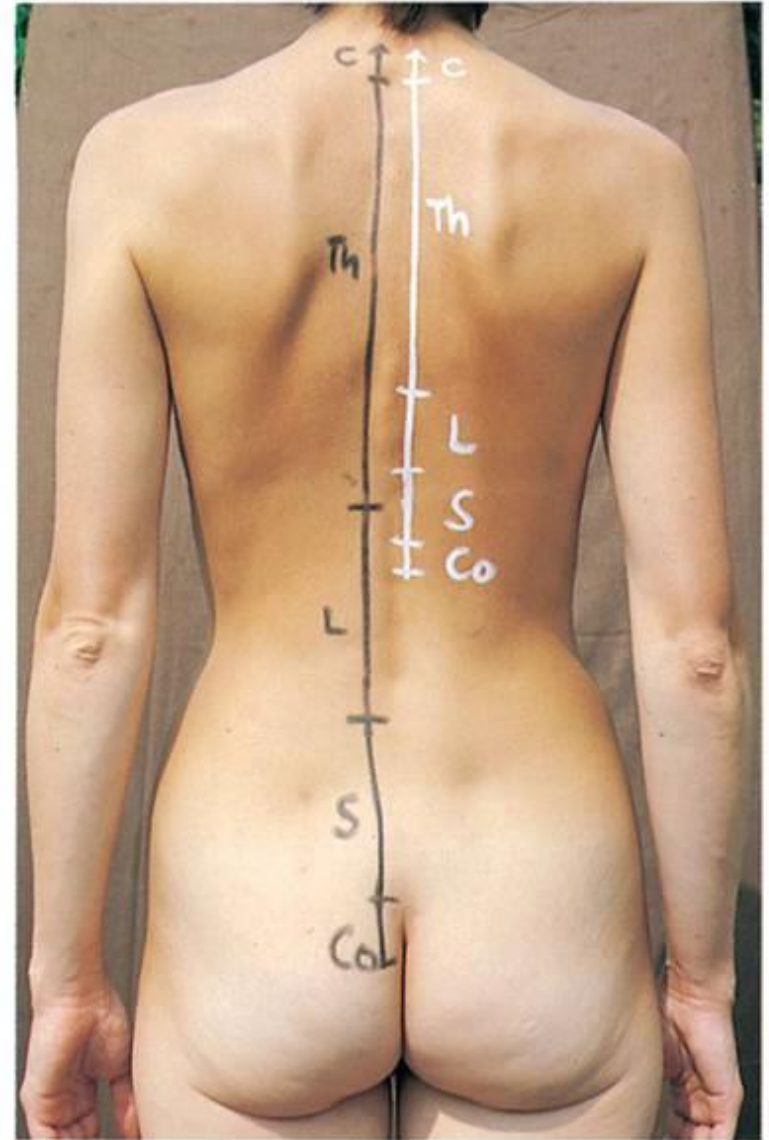
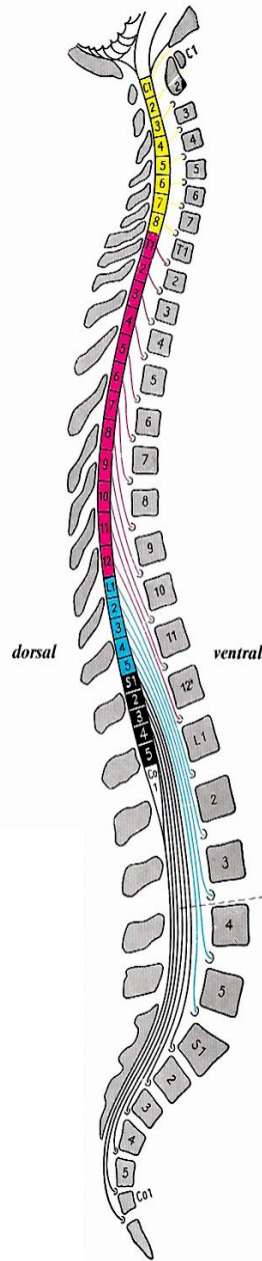
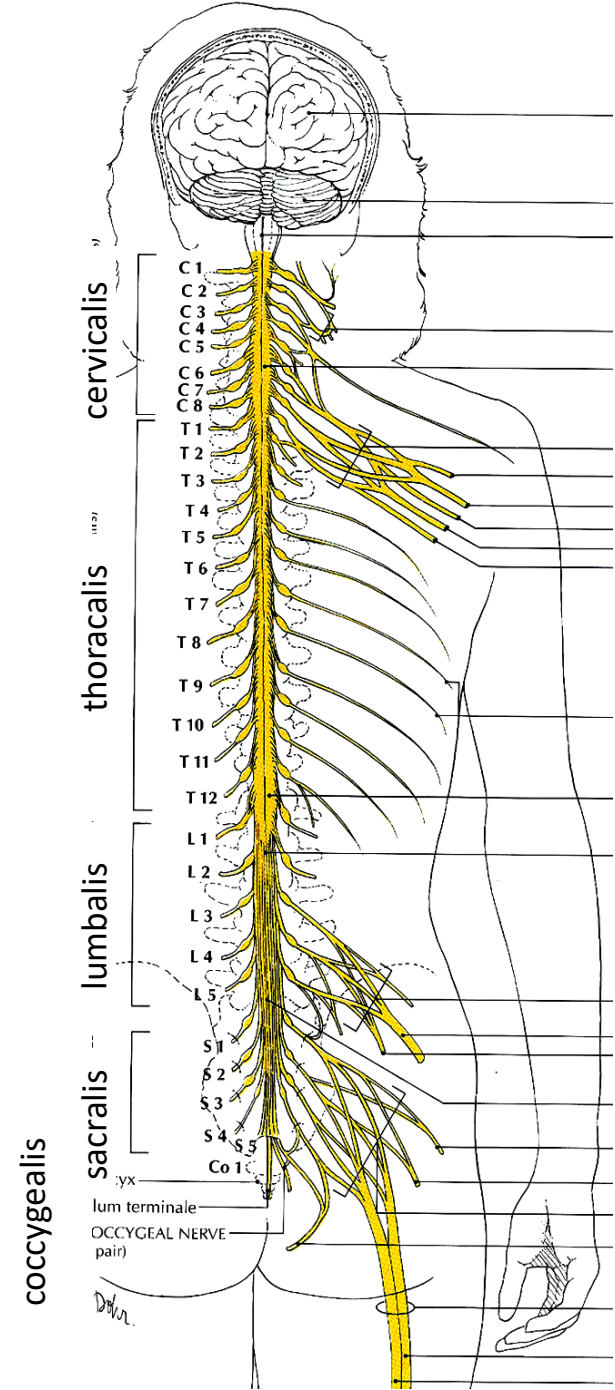
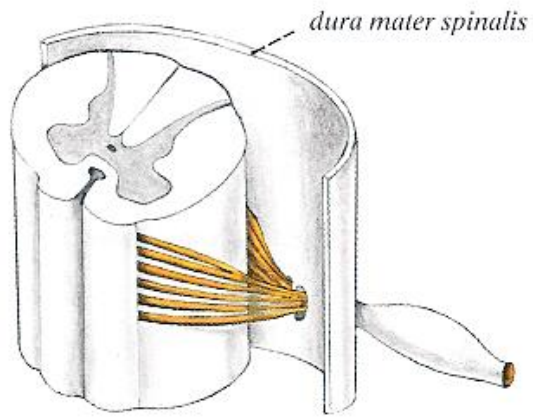


A gerincvelő makroszkópiája, a gerincvelői szelvény

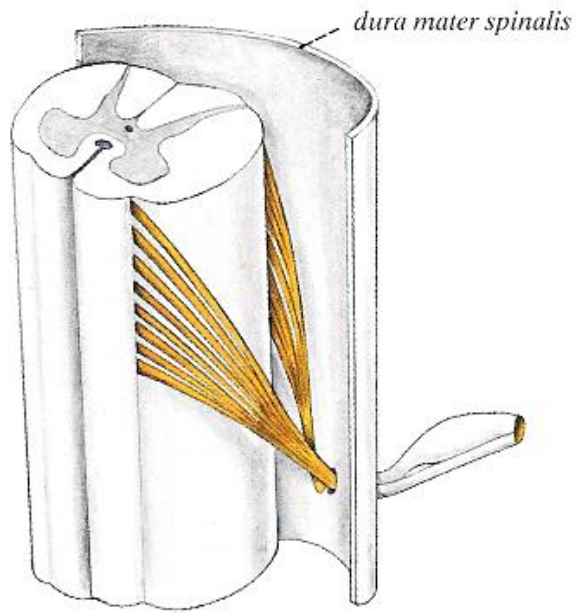


Dr. Gerber Gábor

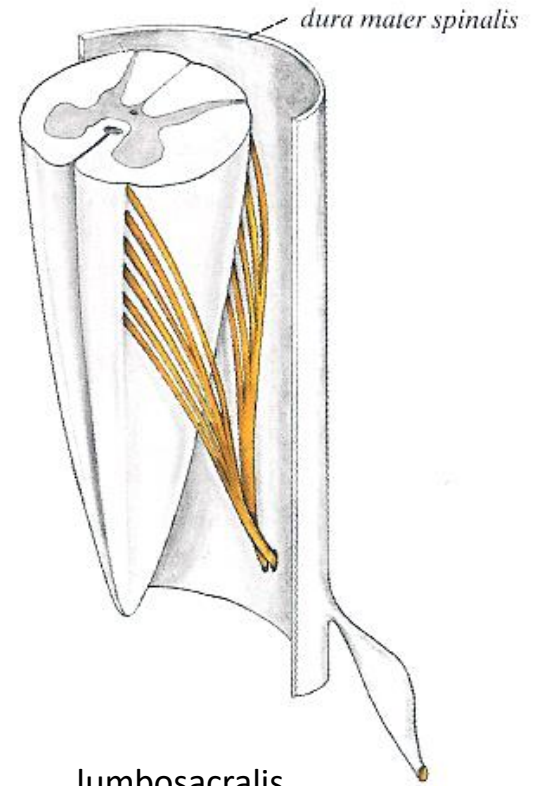




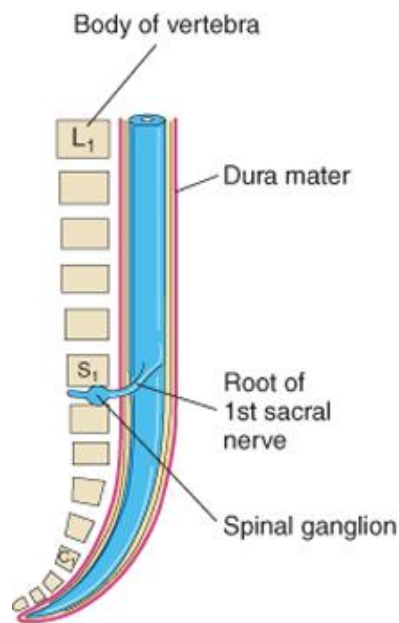
cervicalis



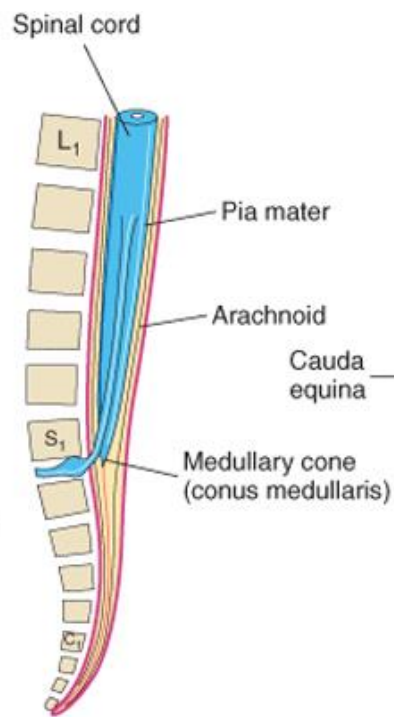
thoracalis



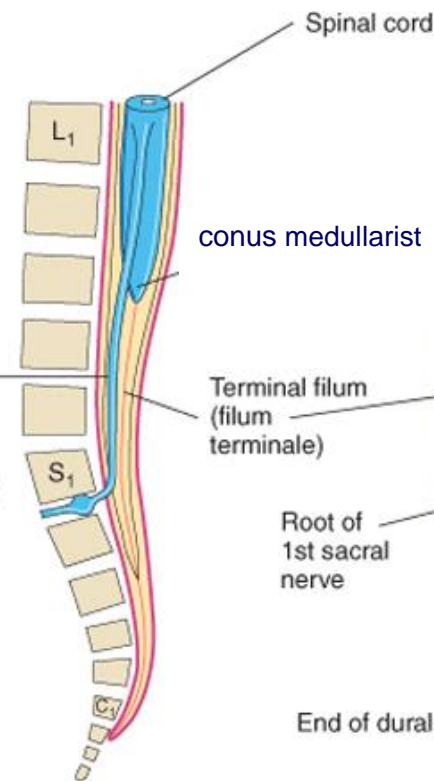
lumbosacralis



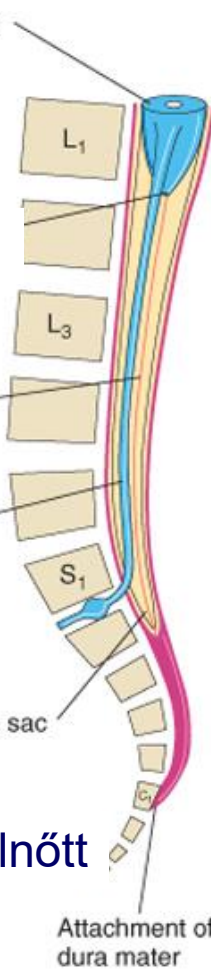
8 hetes



24 hetes

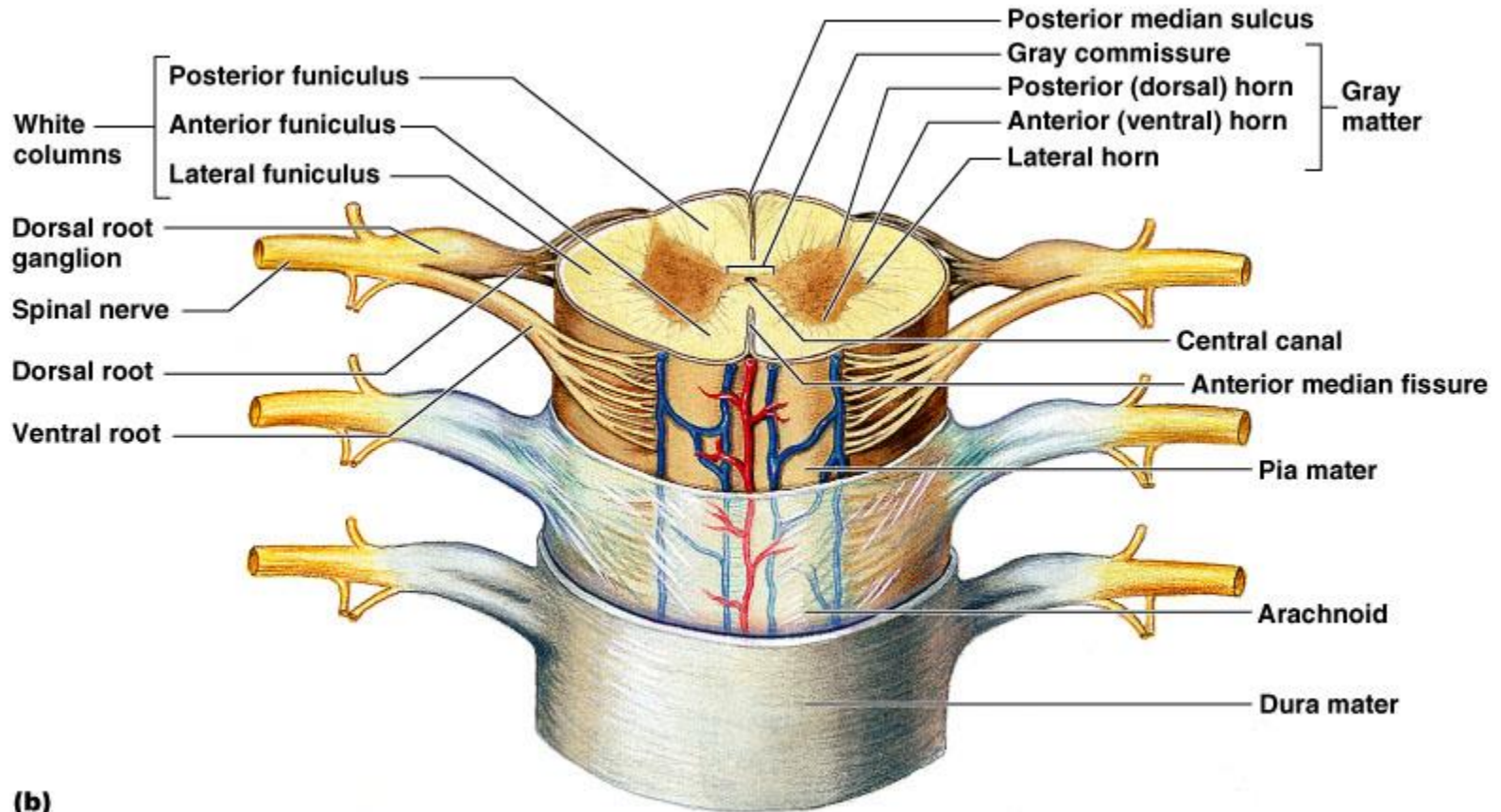


újszülött

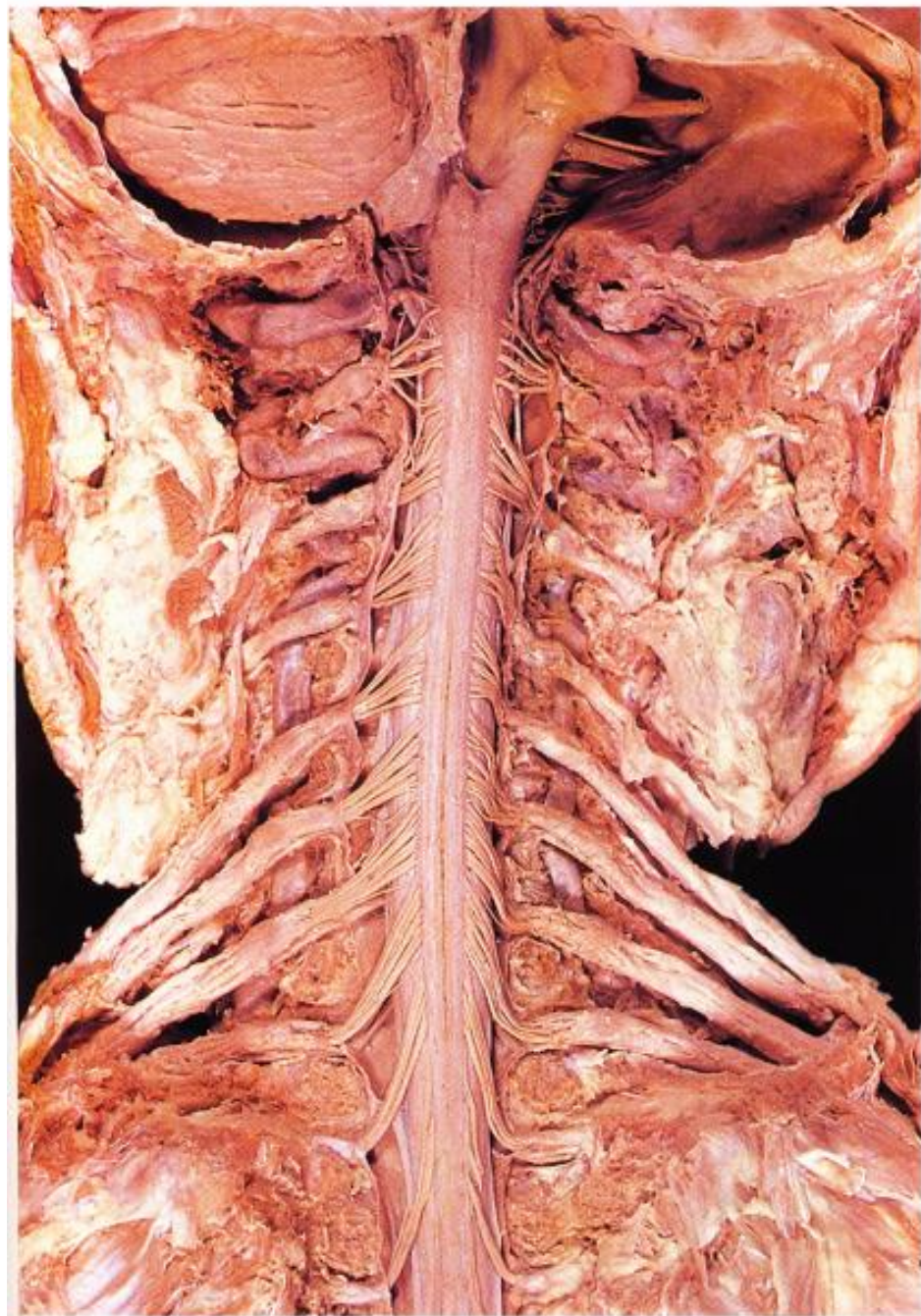


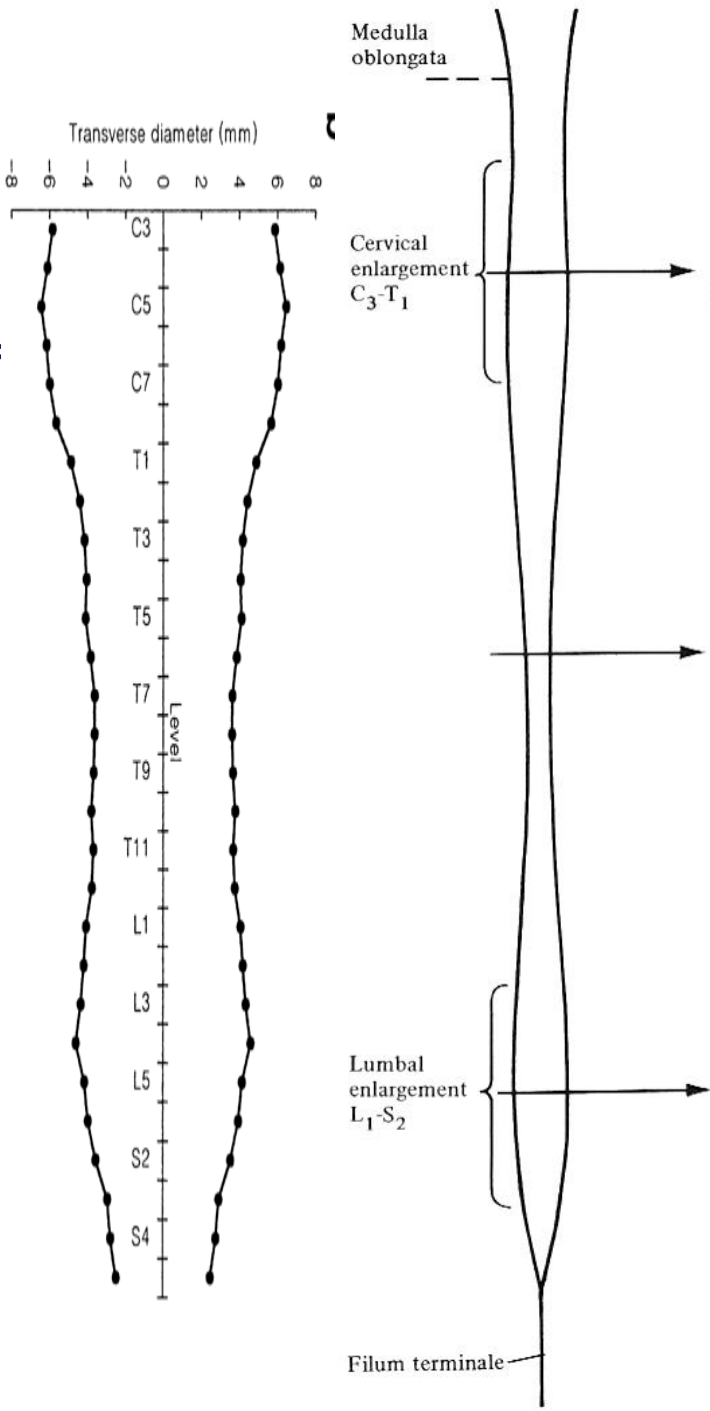
felnőtt

segmentum



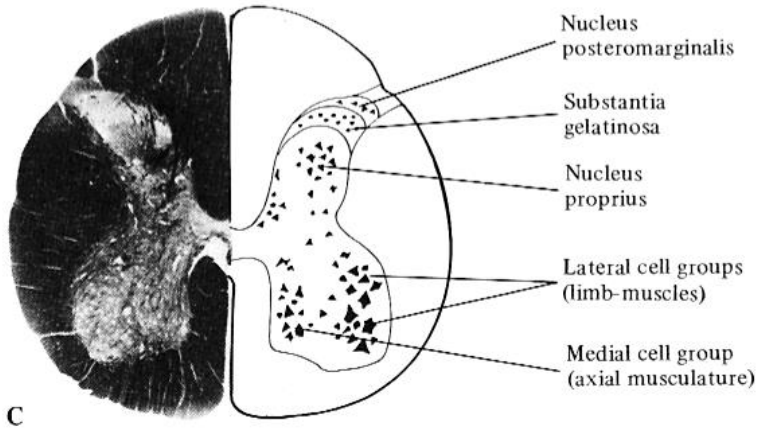
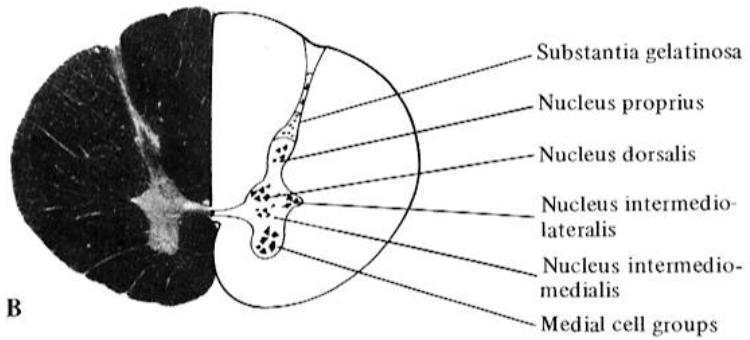
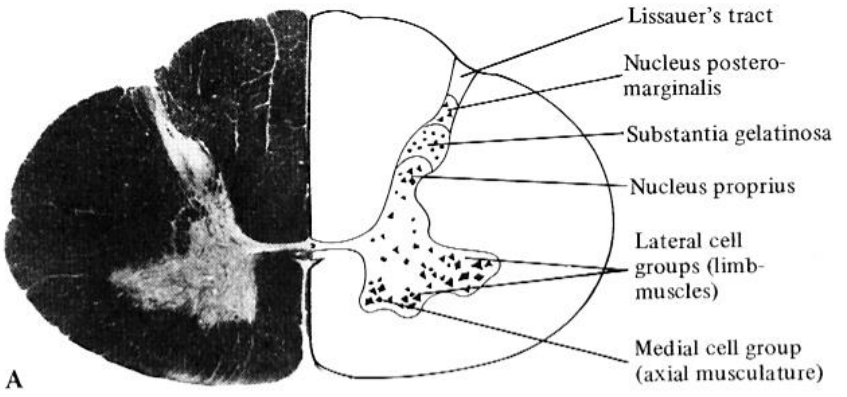
(b)

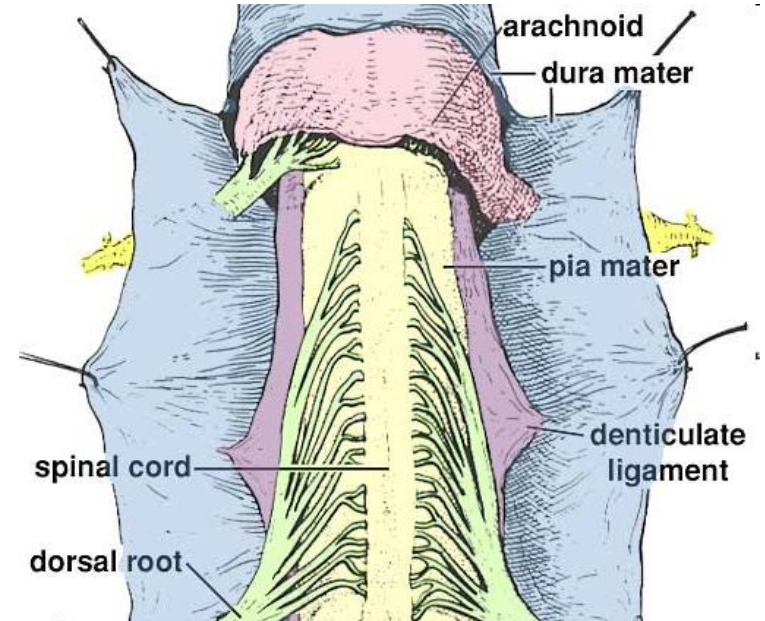
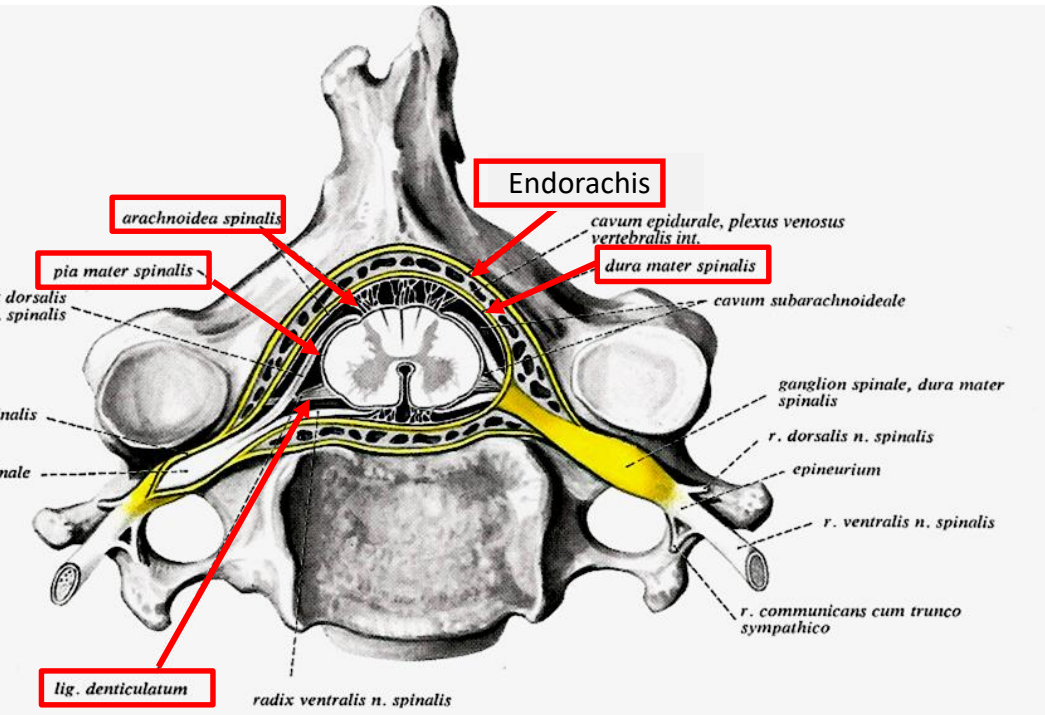




Intumescentia cervicalis (C5-T1):

Intumescentia lumbalis (L2-L3):

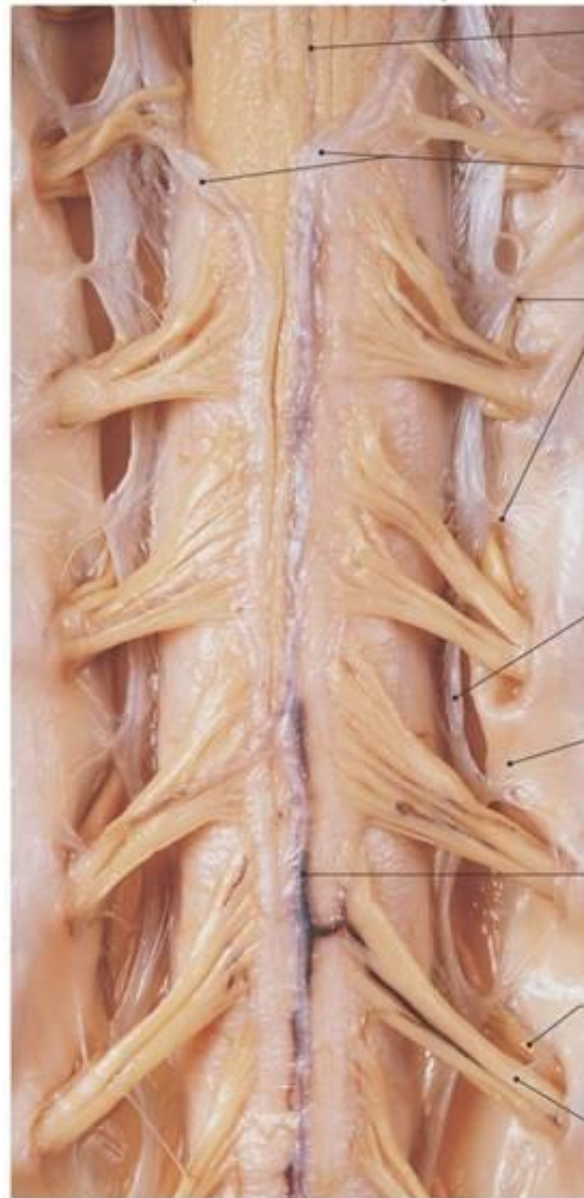




Ligamentum denticulatum

(pia mater része)

Spinal cord



Anterior median
fissure

Pia mater

Denticulate
ligaments

Arachnoid mater
(reflected)

Dura mater
(reflected)

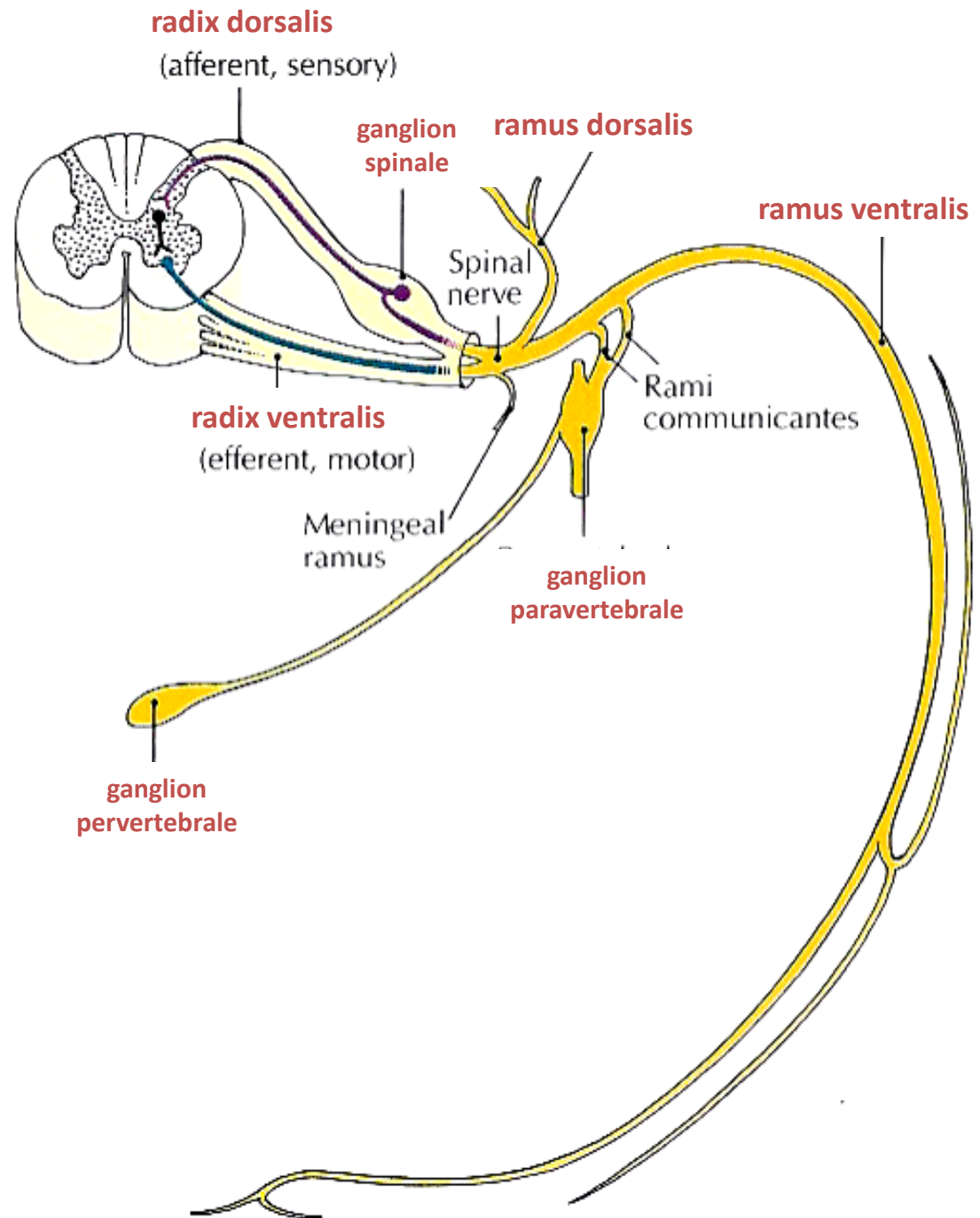
Spinal blood
vessel

Dorsal root of
sixth cervical nerve

Ventral root of
sixth cervical nerve

(a) Anterior view

Nervus spinalis

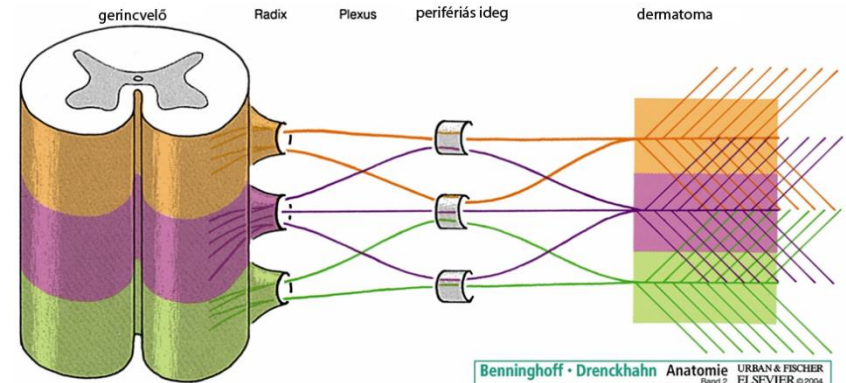
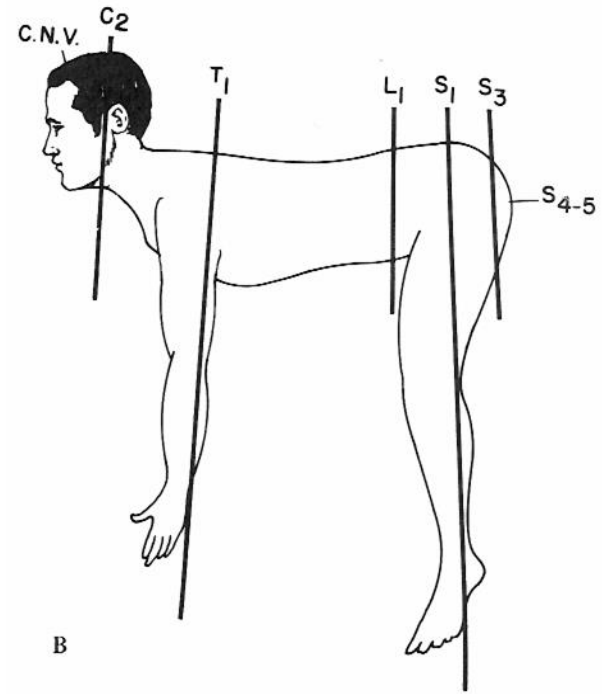
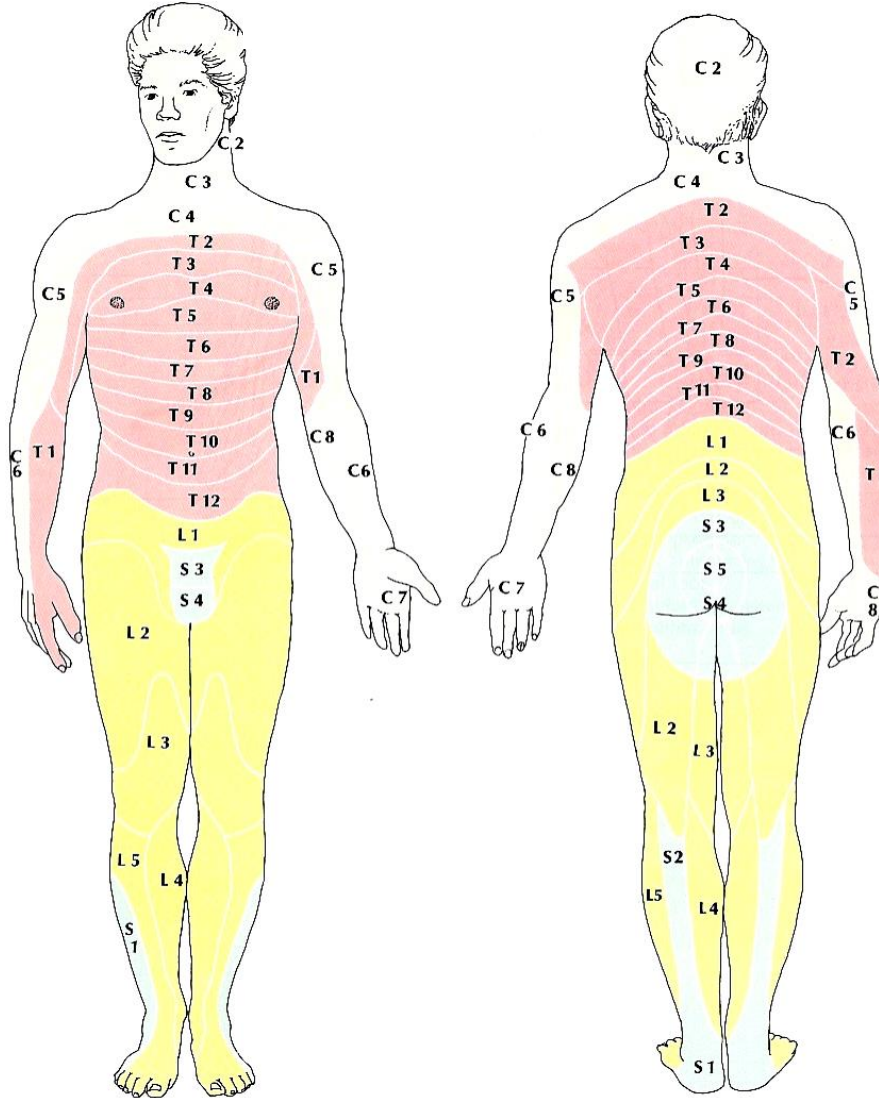


Radix vs. Ramus !

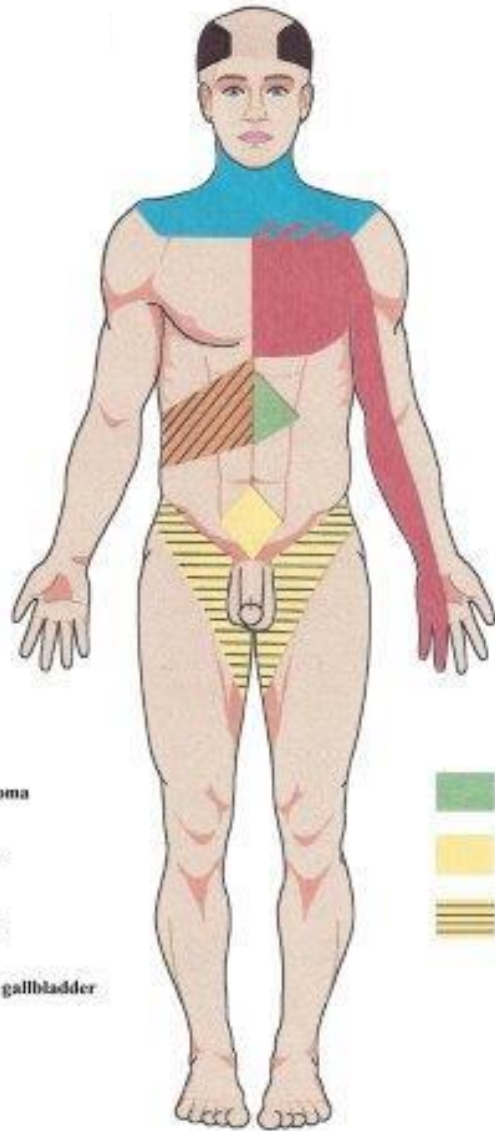
Ventral ramus → plexus

Dermatomák

Bőr területek- azonos gerincvelői ideg lát el

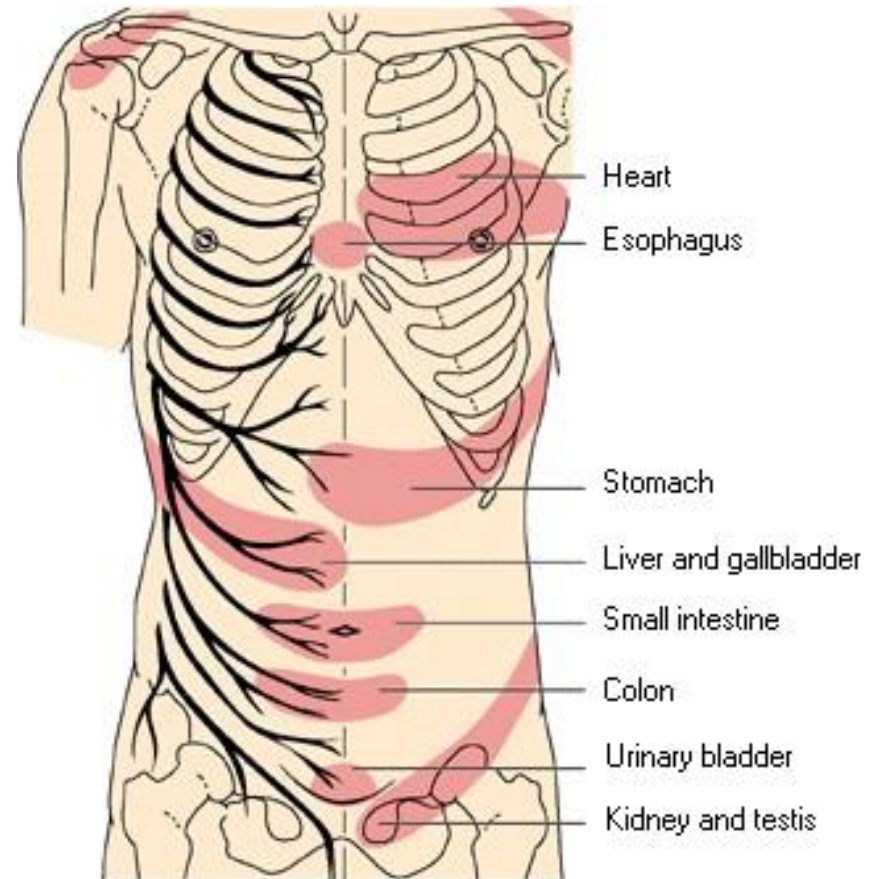


Head zónák (kisugárzó fájdalom)



- glaucoma
- lungs
- heart
- liver, gallbladder

- stomach, pancreas
- urine bladder
- ureters



Herpes Zoster (shingles)

viral infection



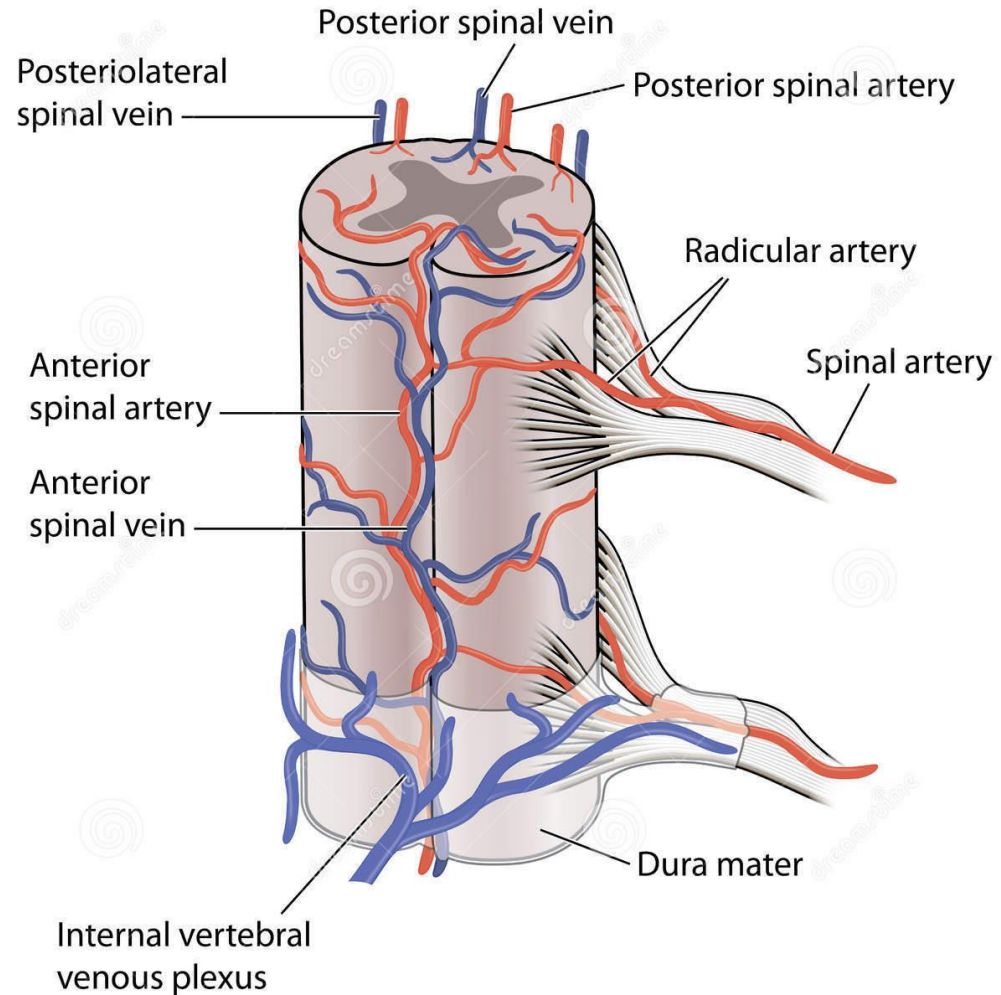
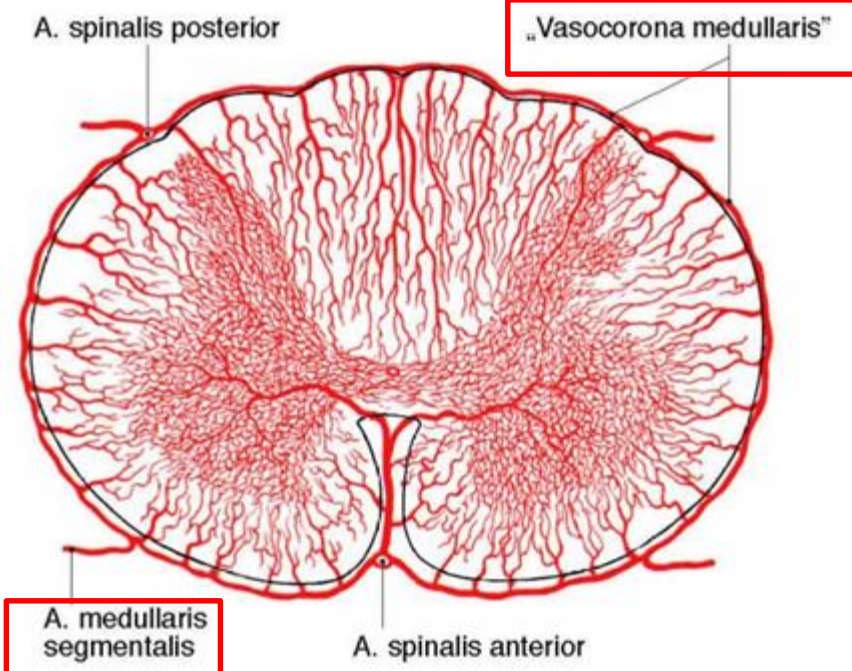
Vérellátás

a. spinalis anterior

anterior 2/3

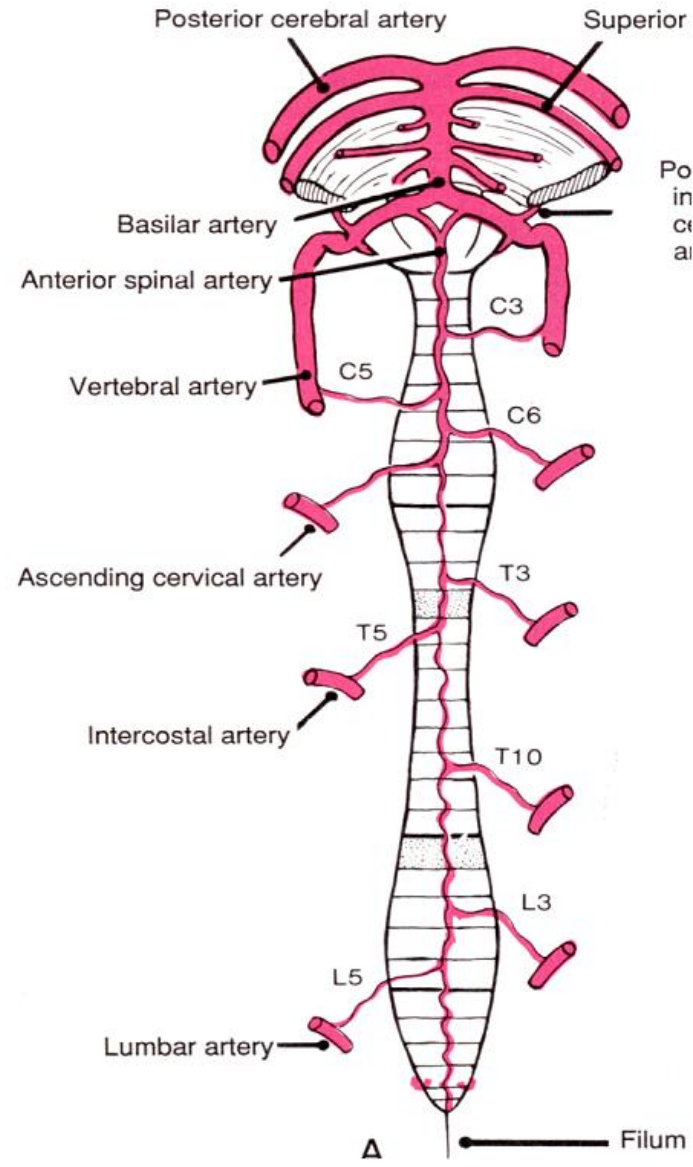
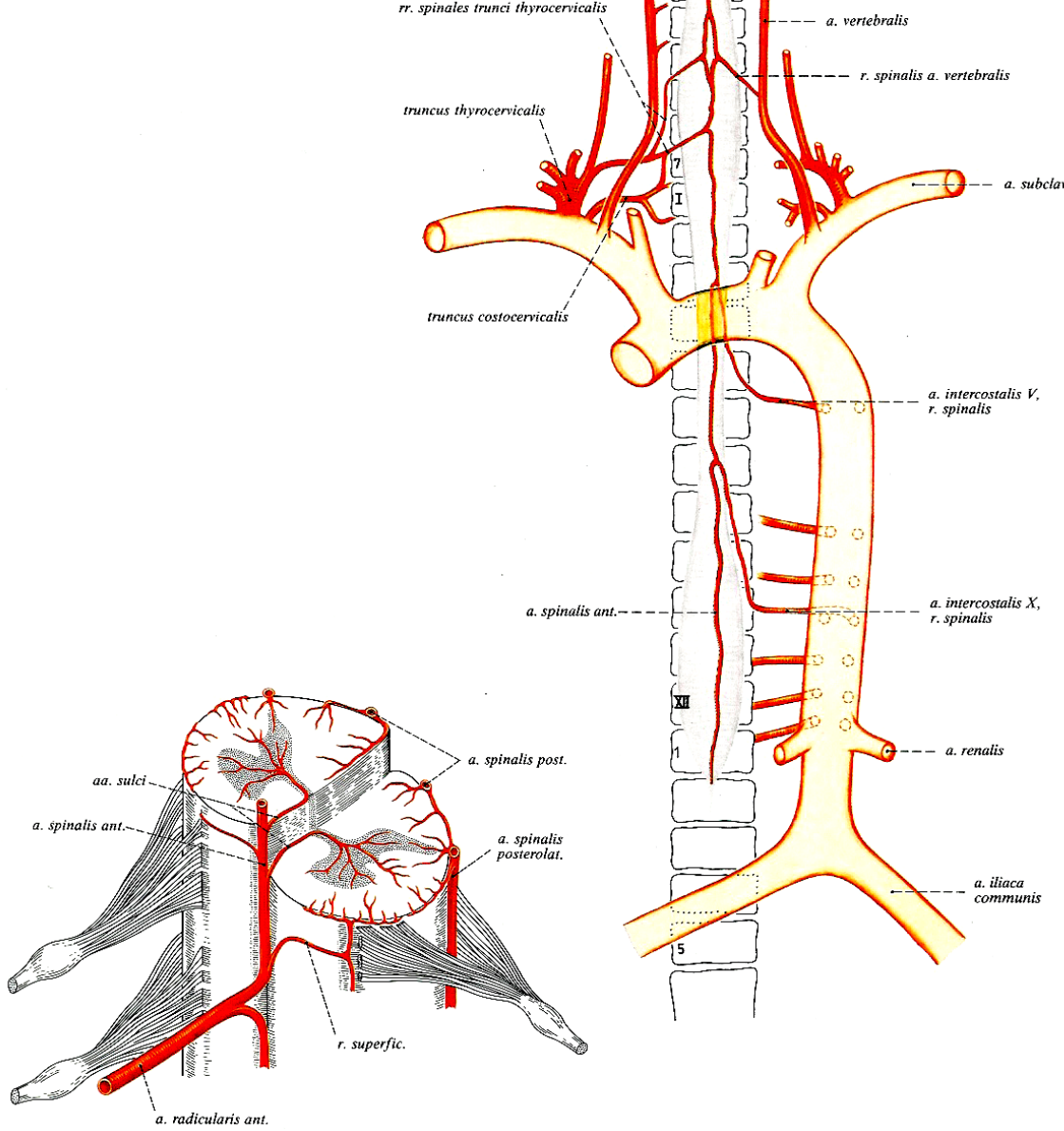
a. spinalis posterior

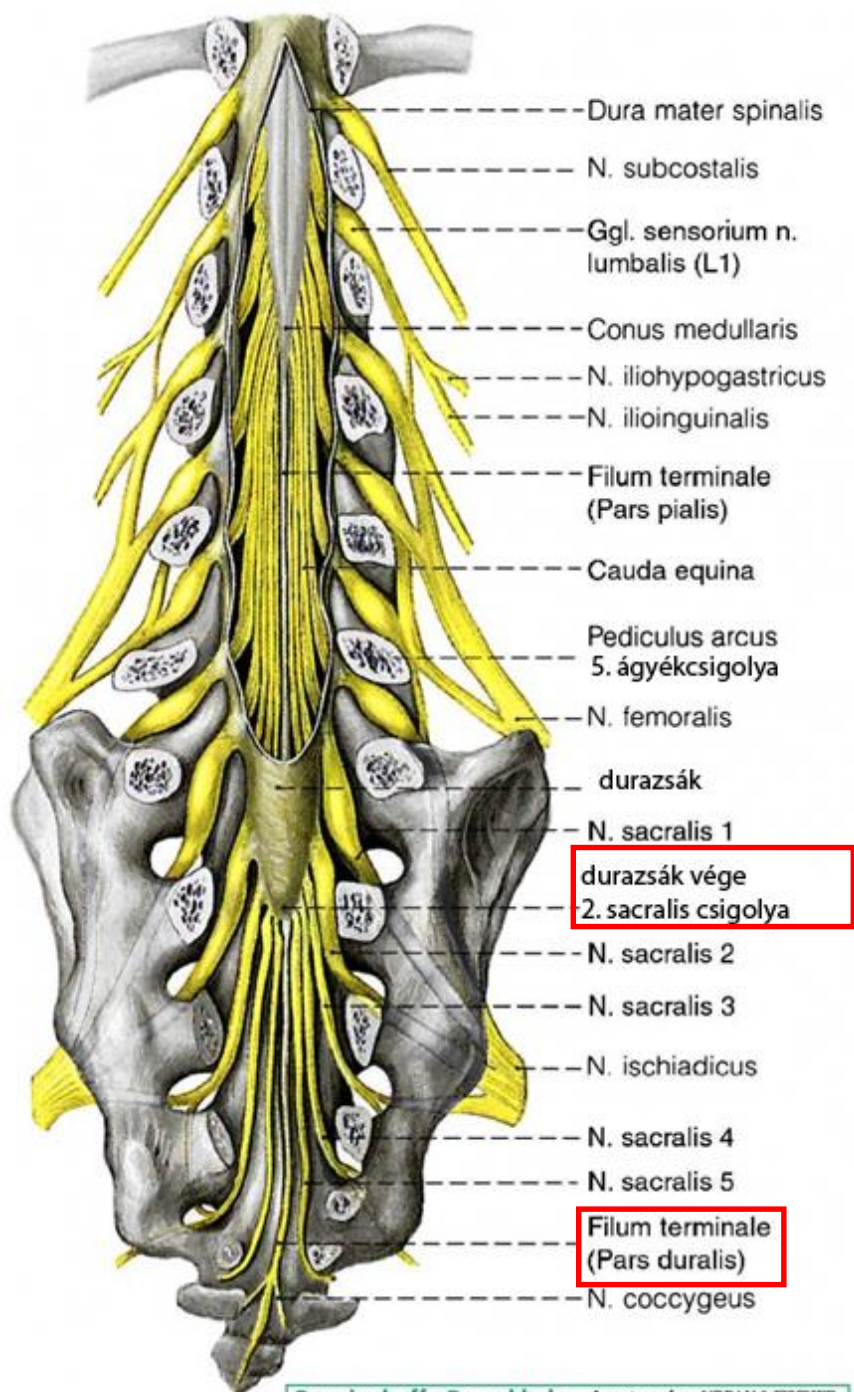
posterior 1/3



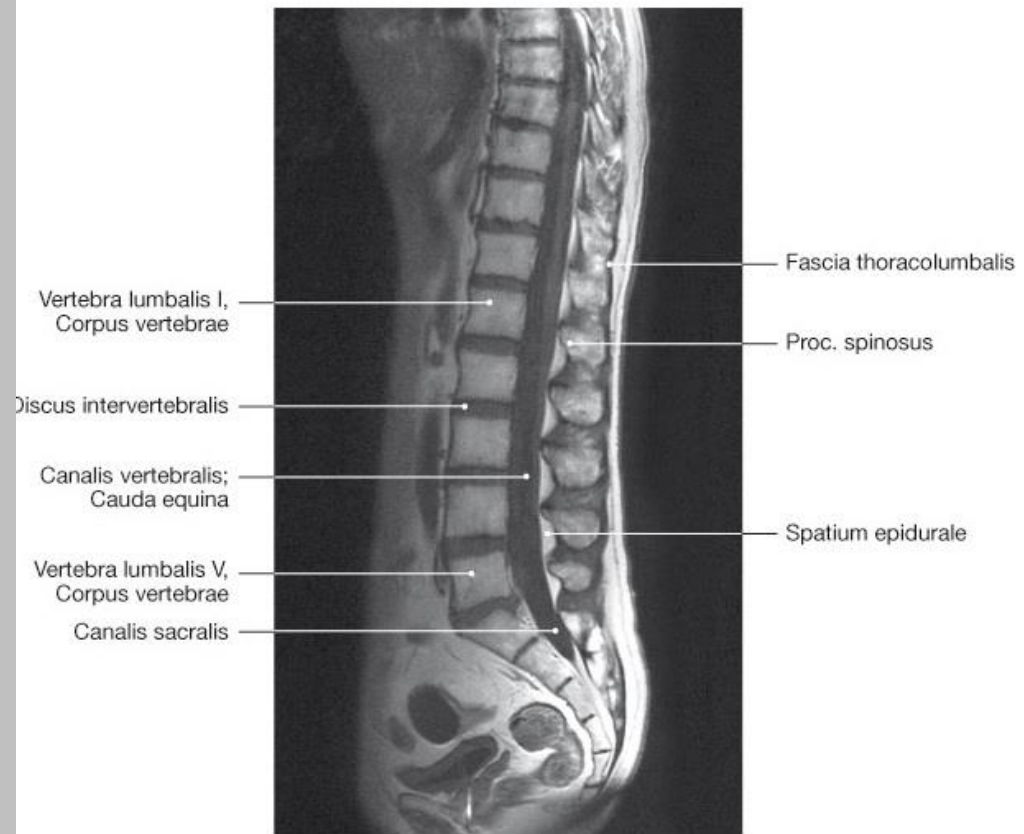
Intercostalis, segmentalis arteriák

Adamkiewicz artery T10

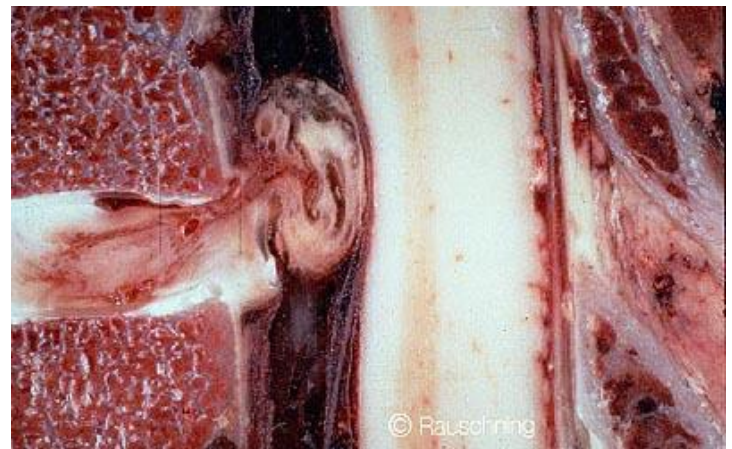


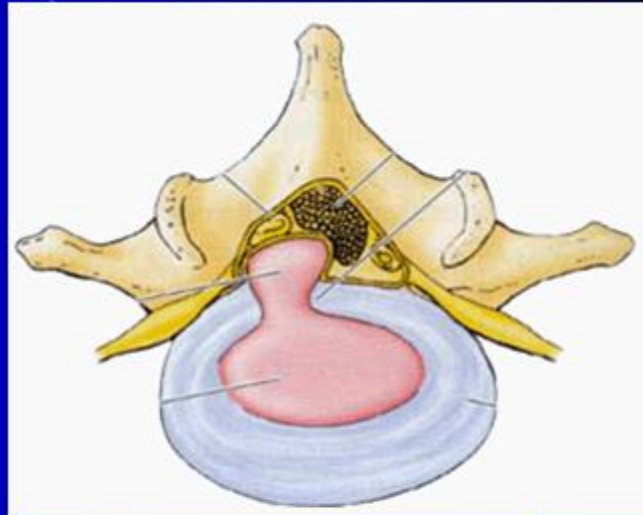
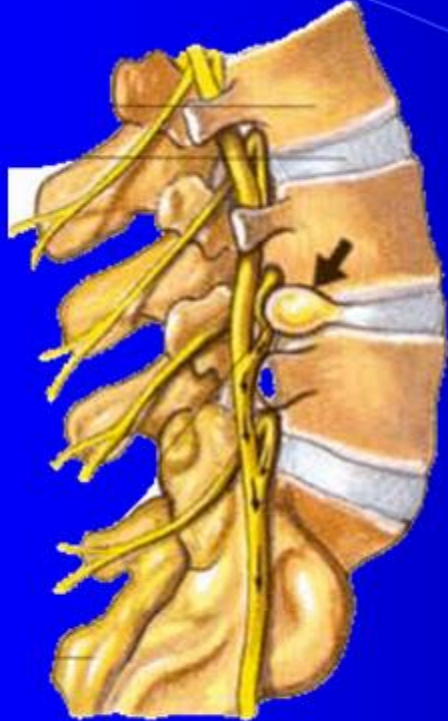


- S2: end of dural sac
- filum terminale pars duralis
- Cisterna lumbalis (L2-S2)



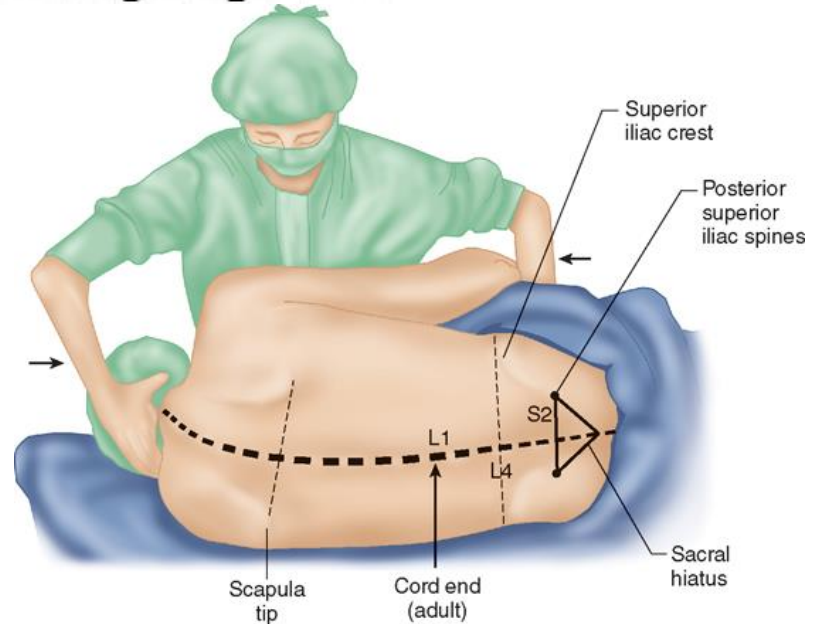
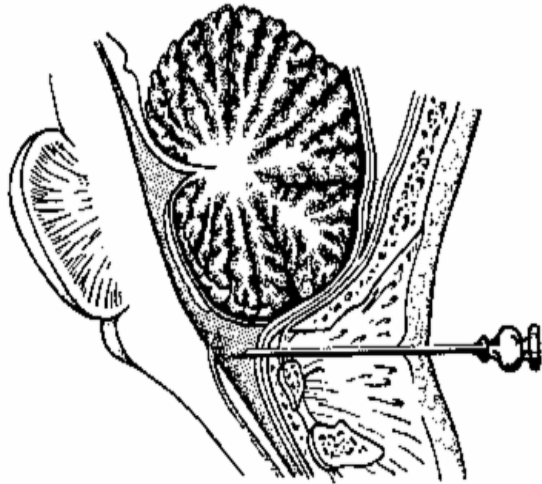
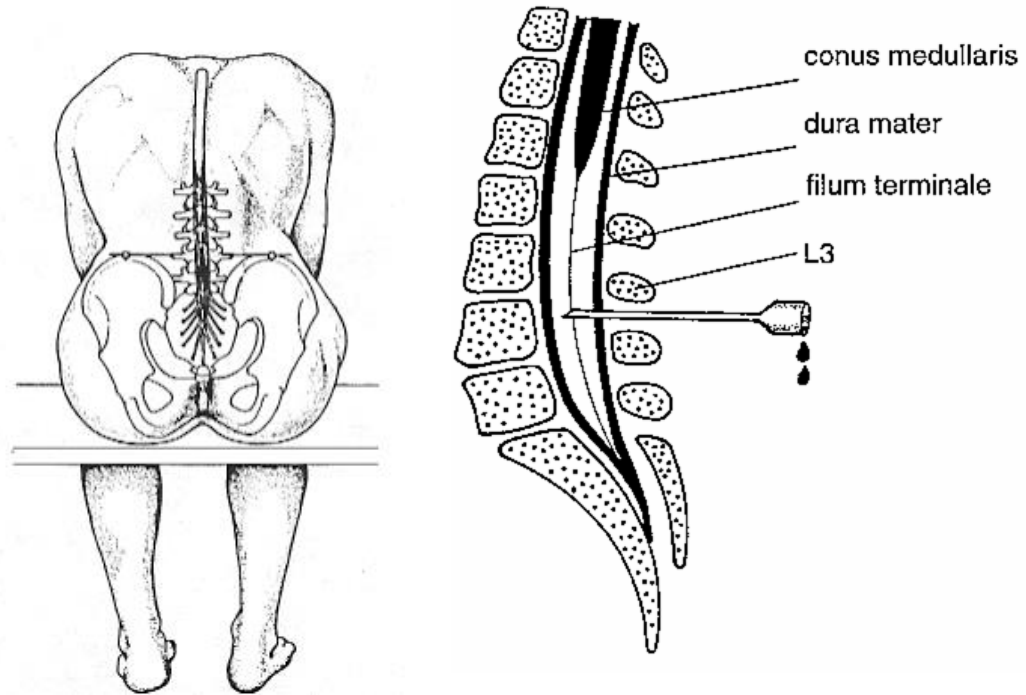
Sobotta – Atlas der Anatomie des Menschen, 23. A. 2010, © Elsevier GmbH, München



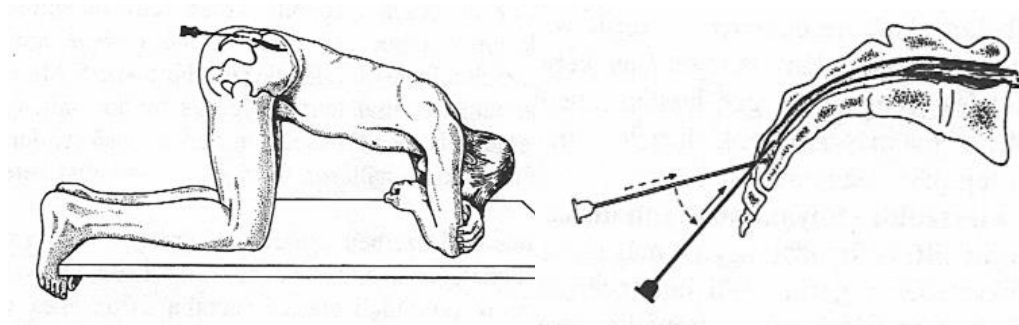
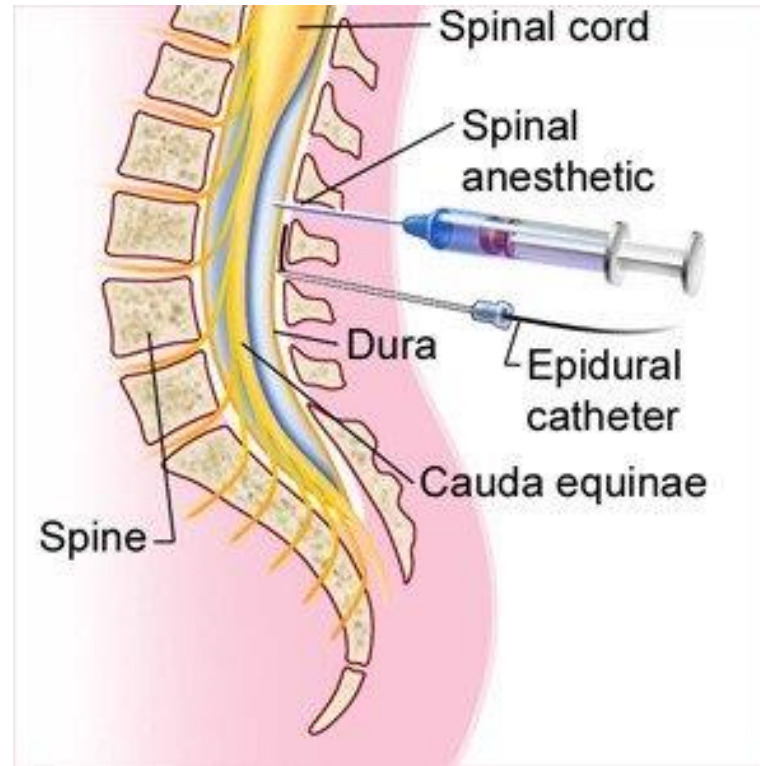


HERNIATION of nucleus pulposus

Lumbalpunkctio



Spinalis, Epiduralis, Caudalis anesthesia



Köszönöm a figyelmet

