

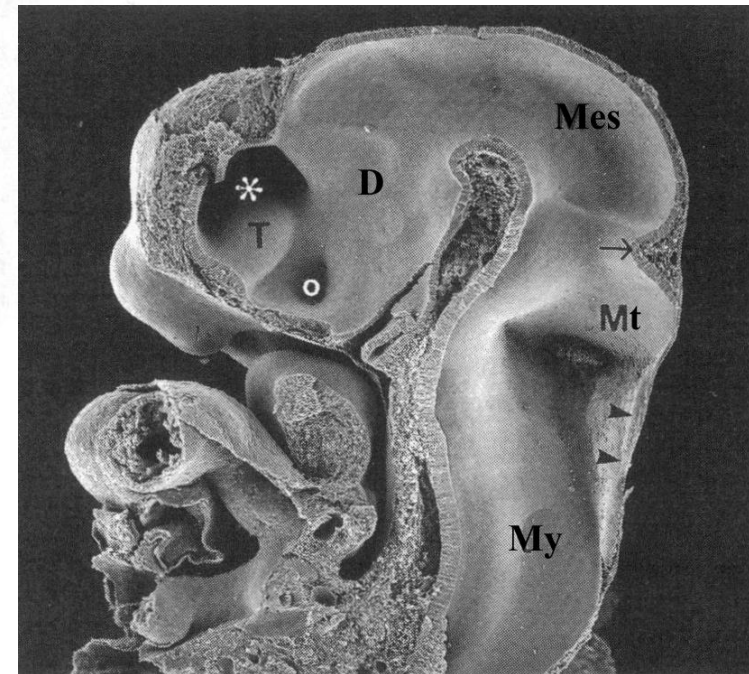
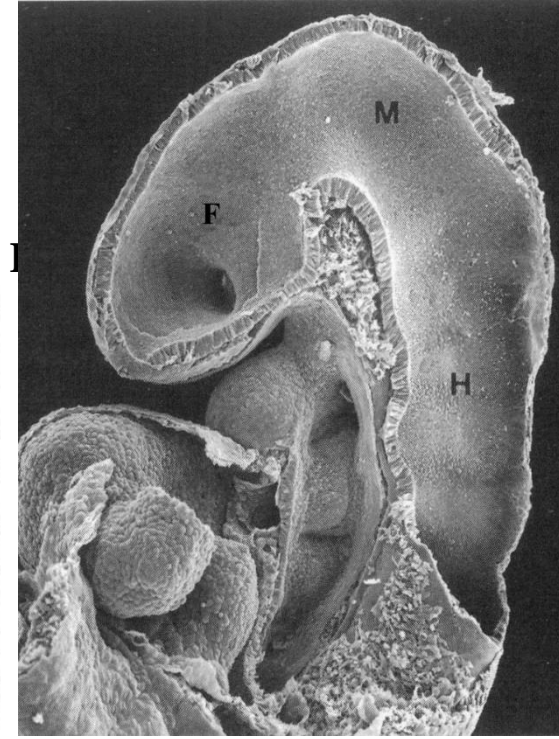
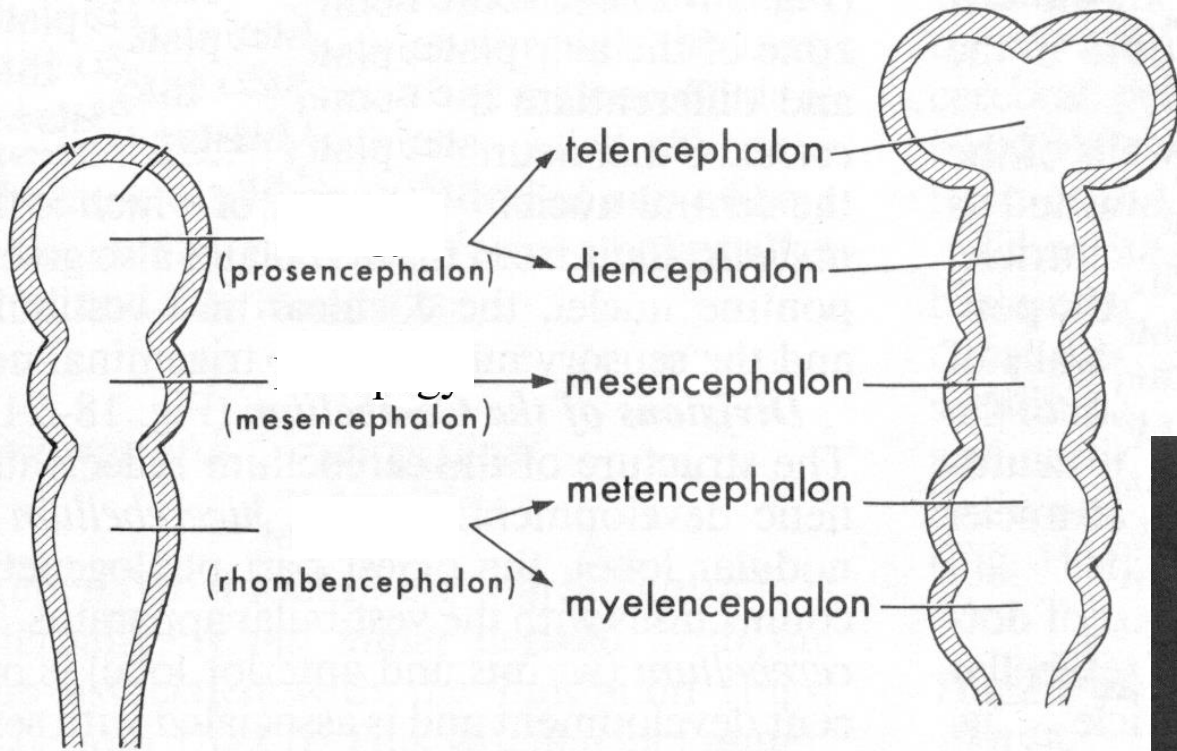
Hämispherien, Seitenventrikel, Diencephalon, III. Ventrikel

zusammengestellt von

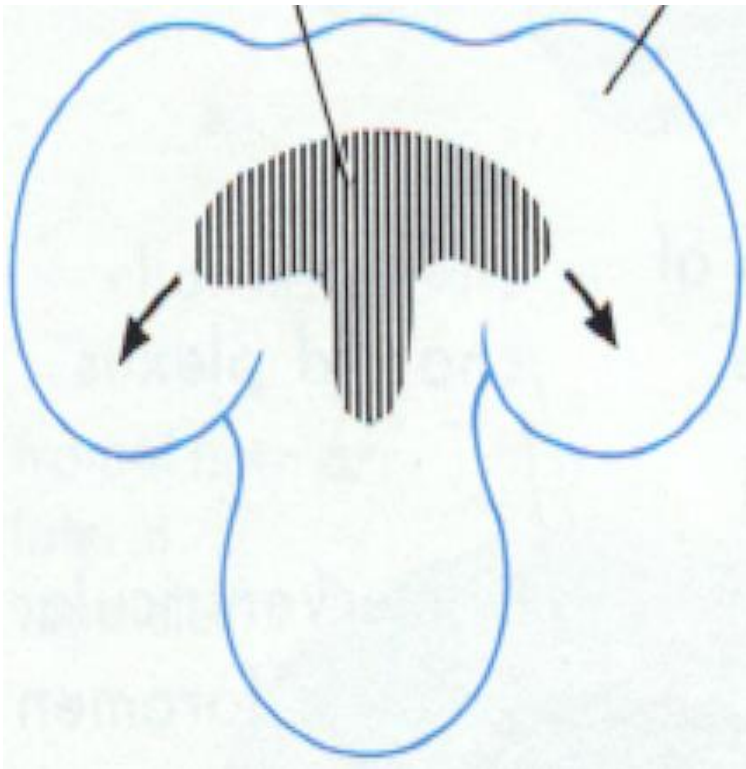
Prof. Dr. András Csillag

unter Mitarbeit von

Prof. Dr. Alán Alpár

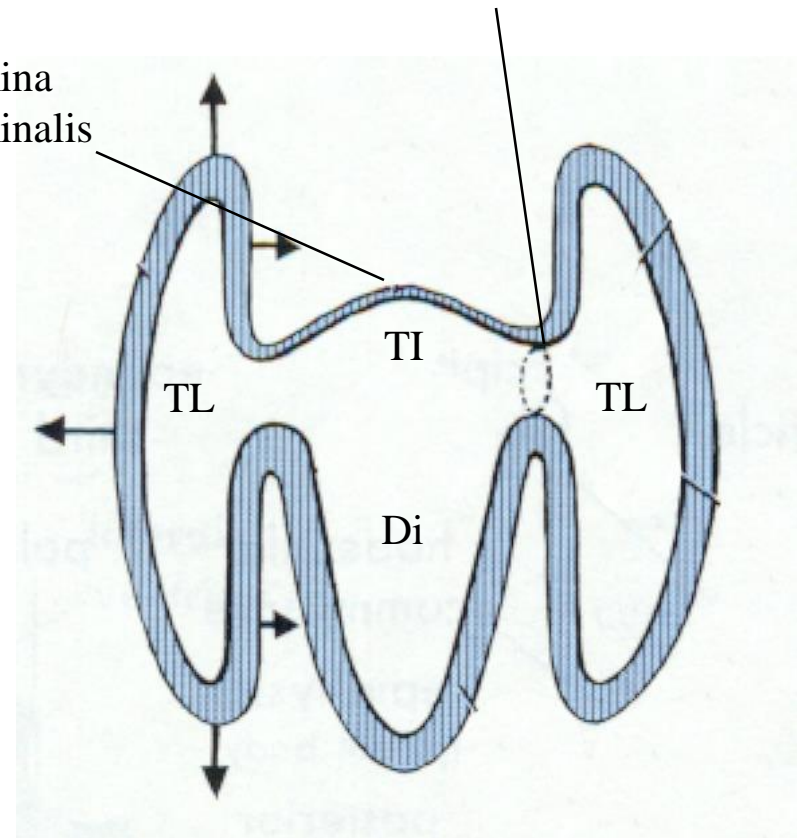


Ependyma

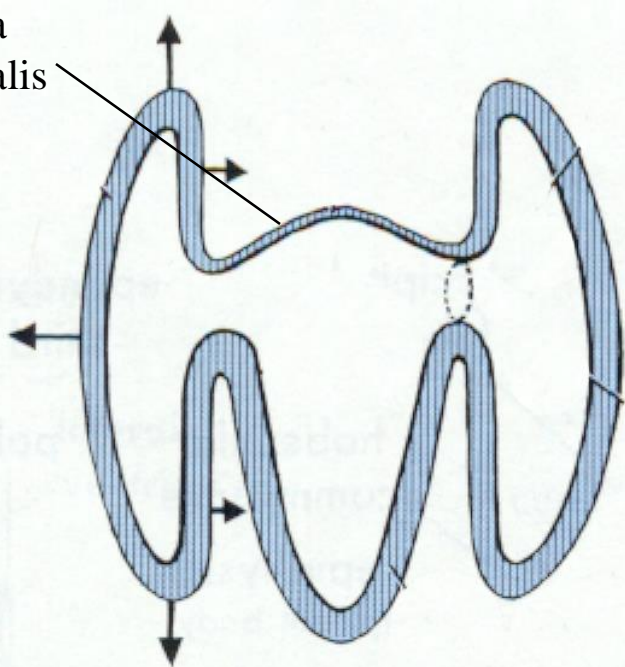


Foramen interventriculare

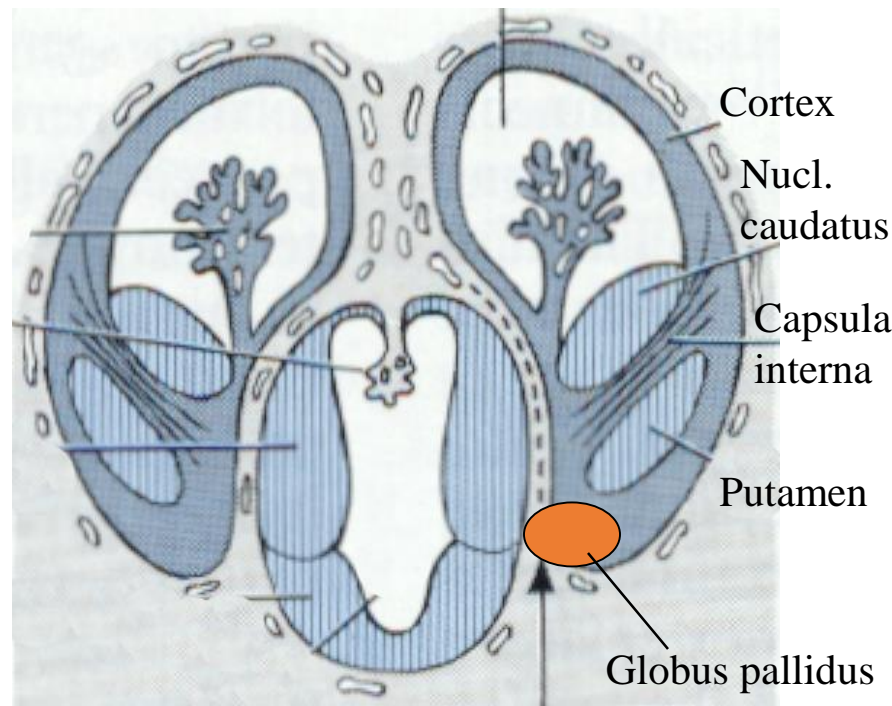
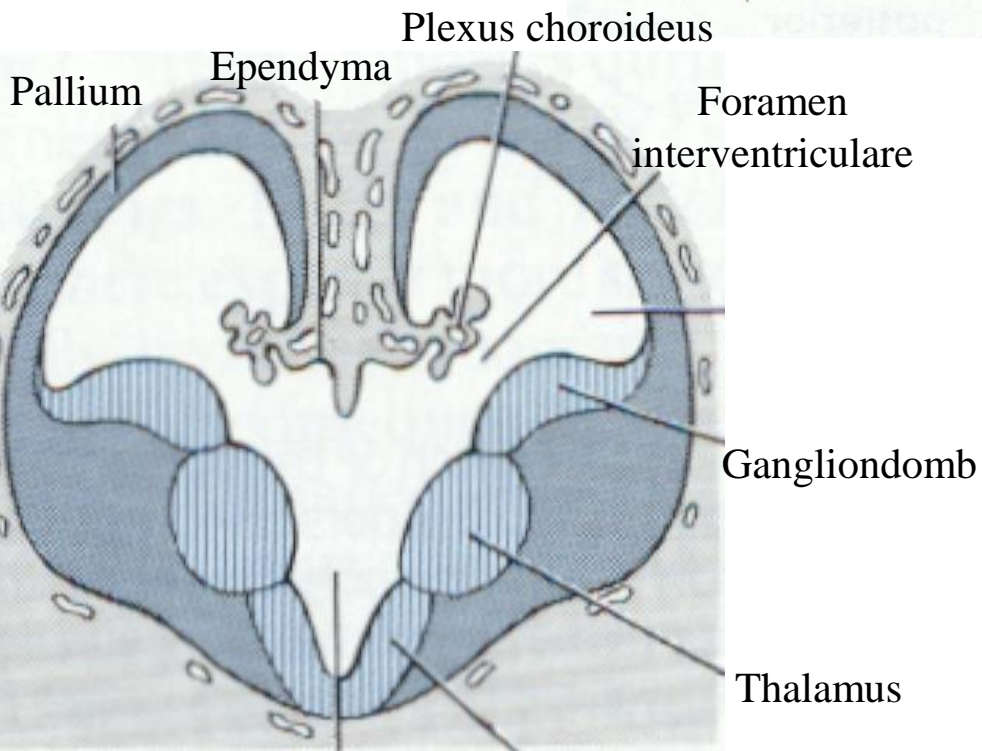
Lamina terminalis

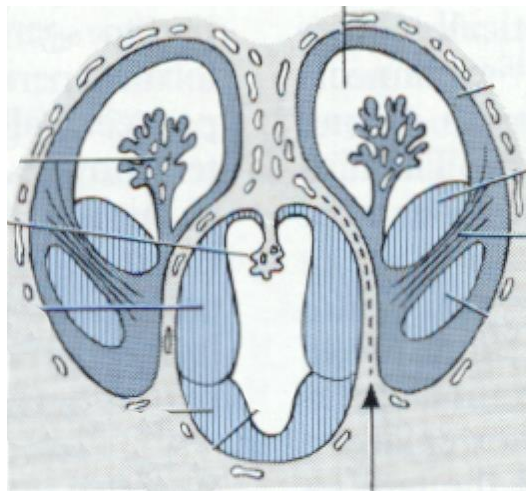
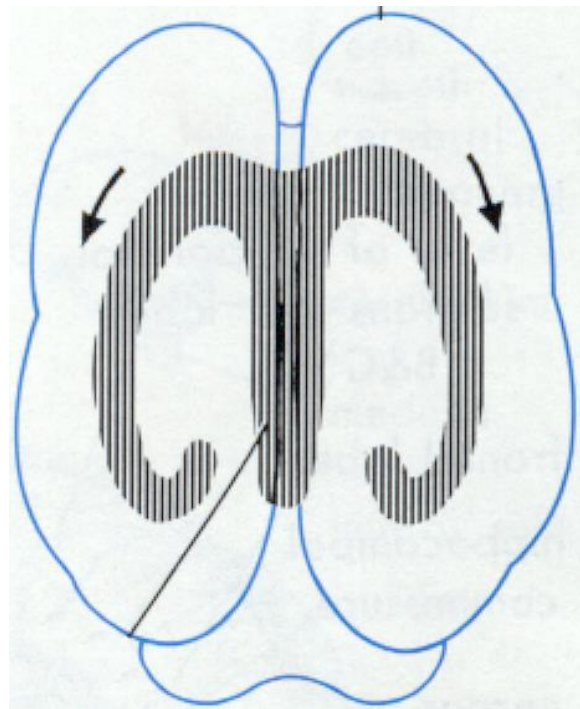
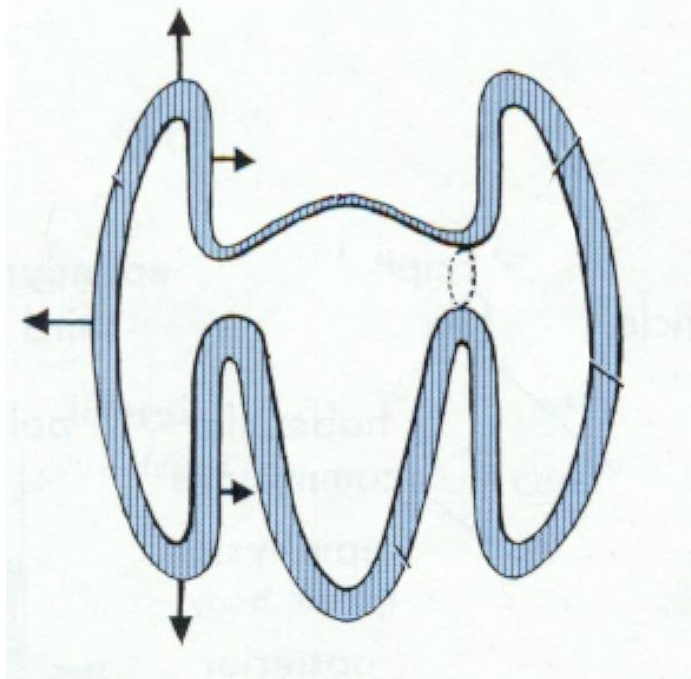


Lamina terminalis

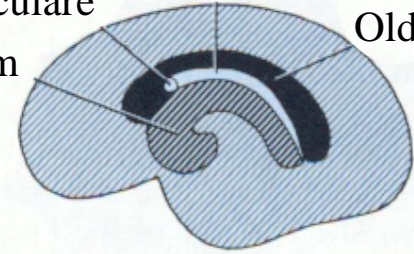


Oldalkamra

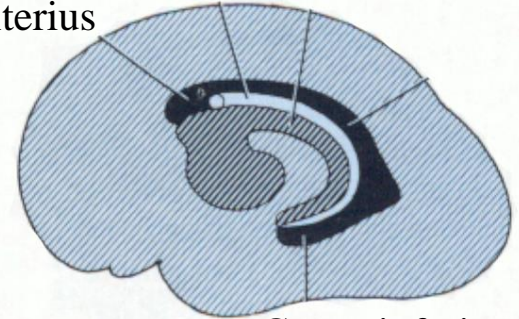




Fissura choroidea
 Foramen interventriculare
 Striatum
 Oldalkamra

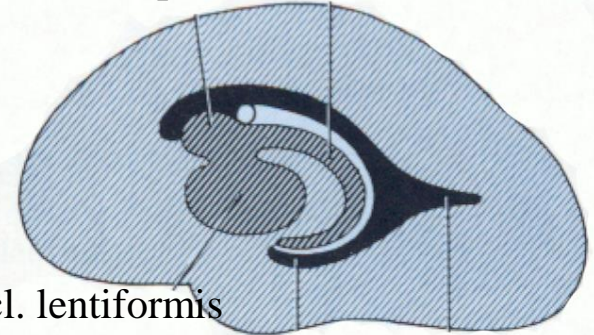


Fissura choroidea
 Cornu anterius
 Striatum



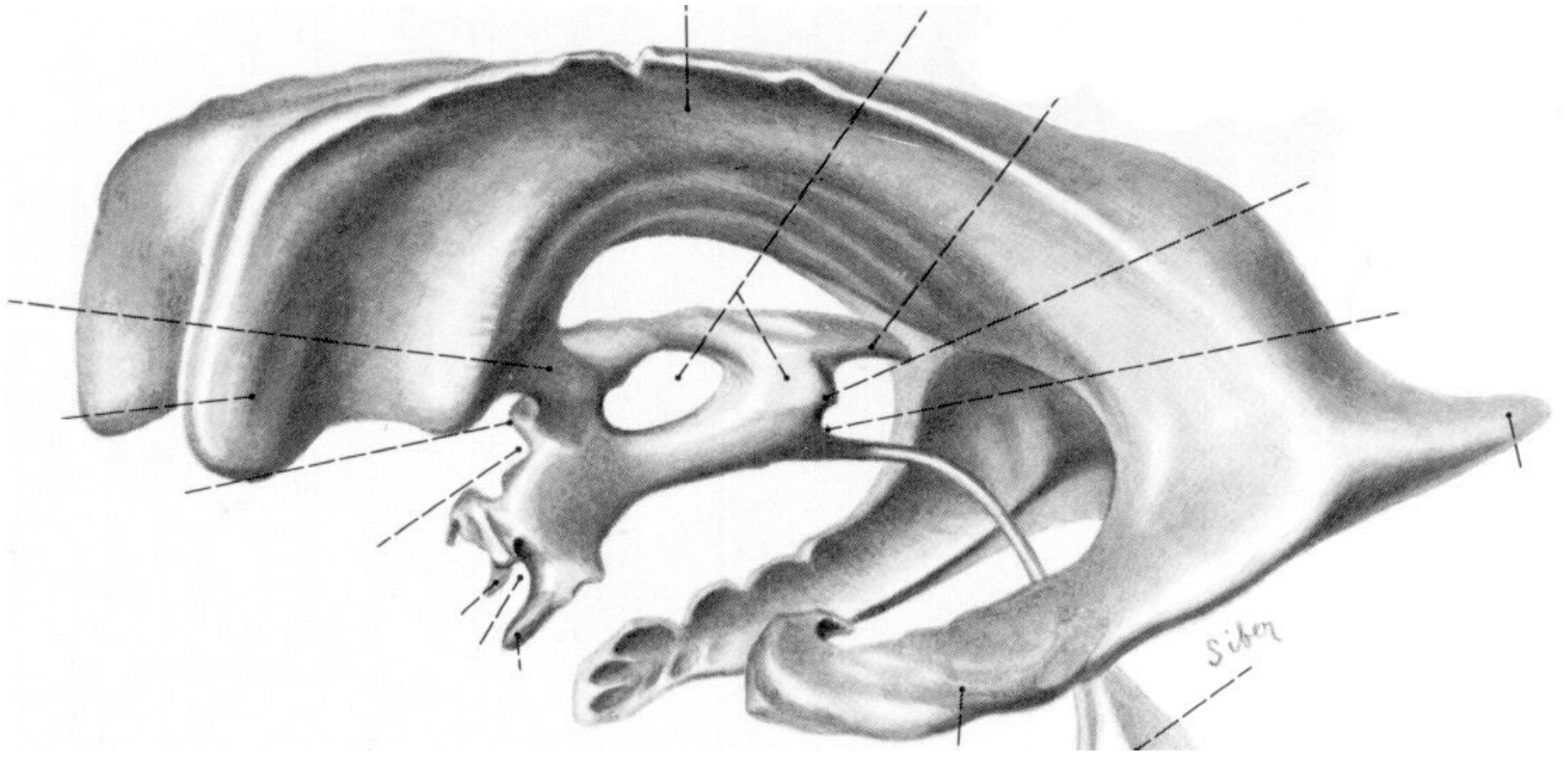
Cornu inferius

Caput et cauda nuclei caudati



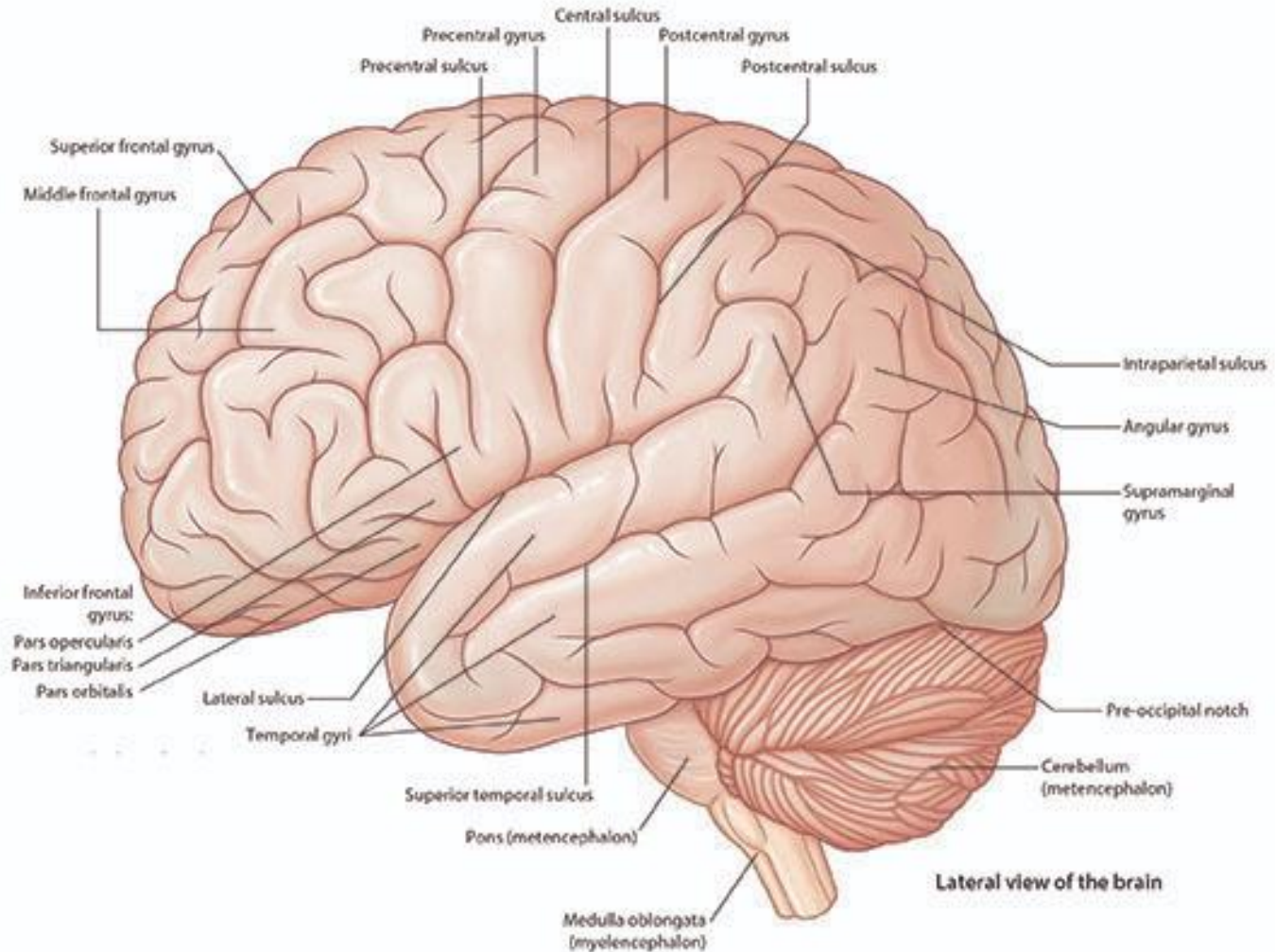
Nucl. lentiformis

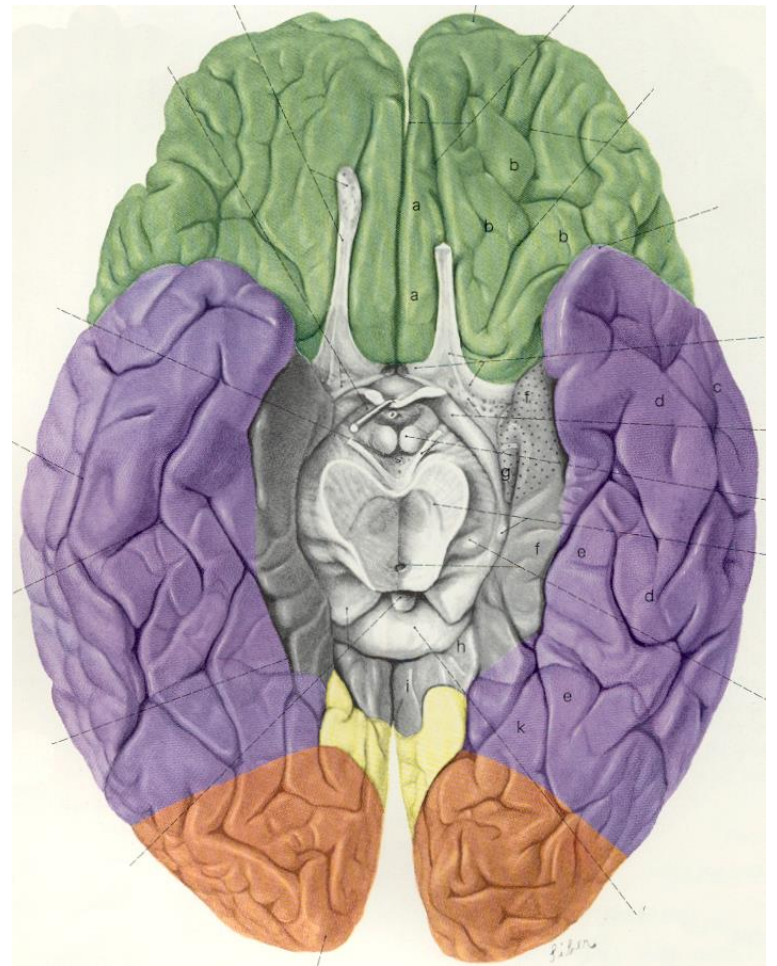
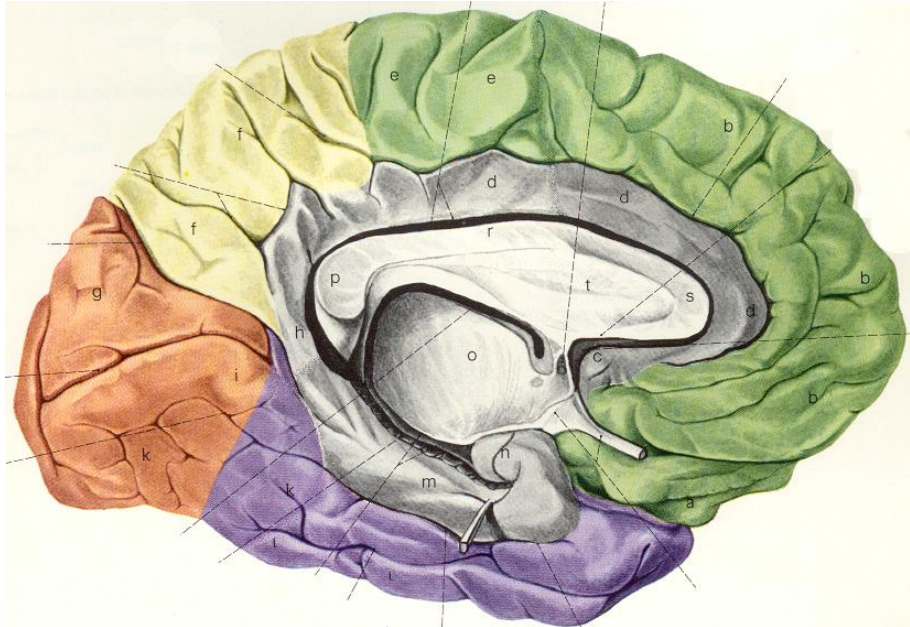
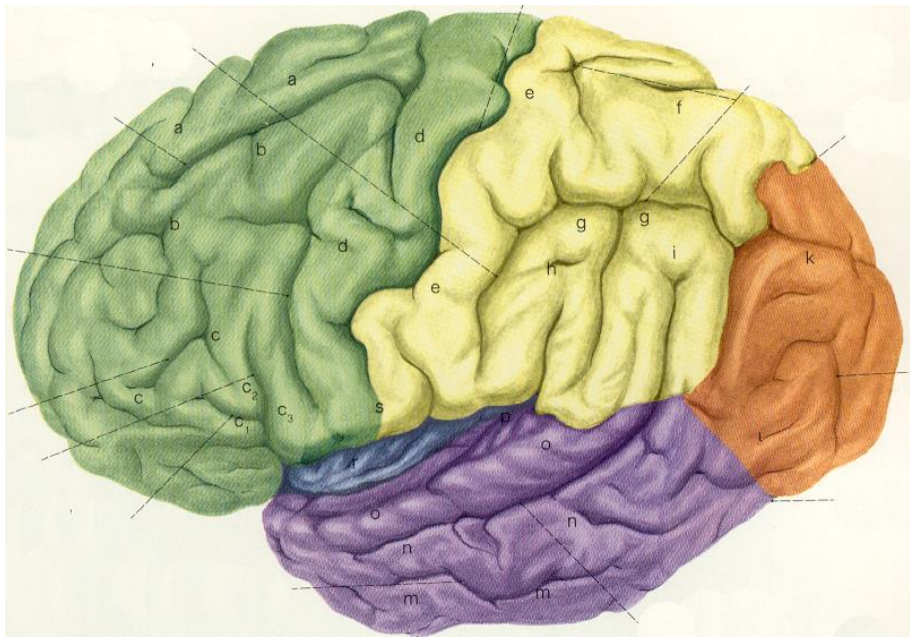
Cornu inferius Cornu posterius

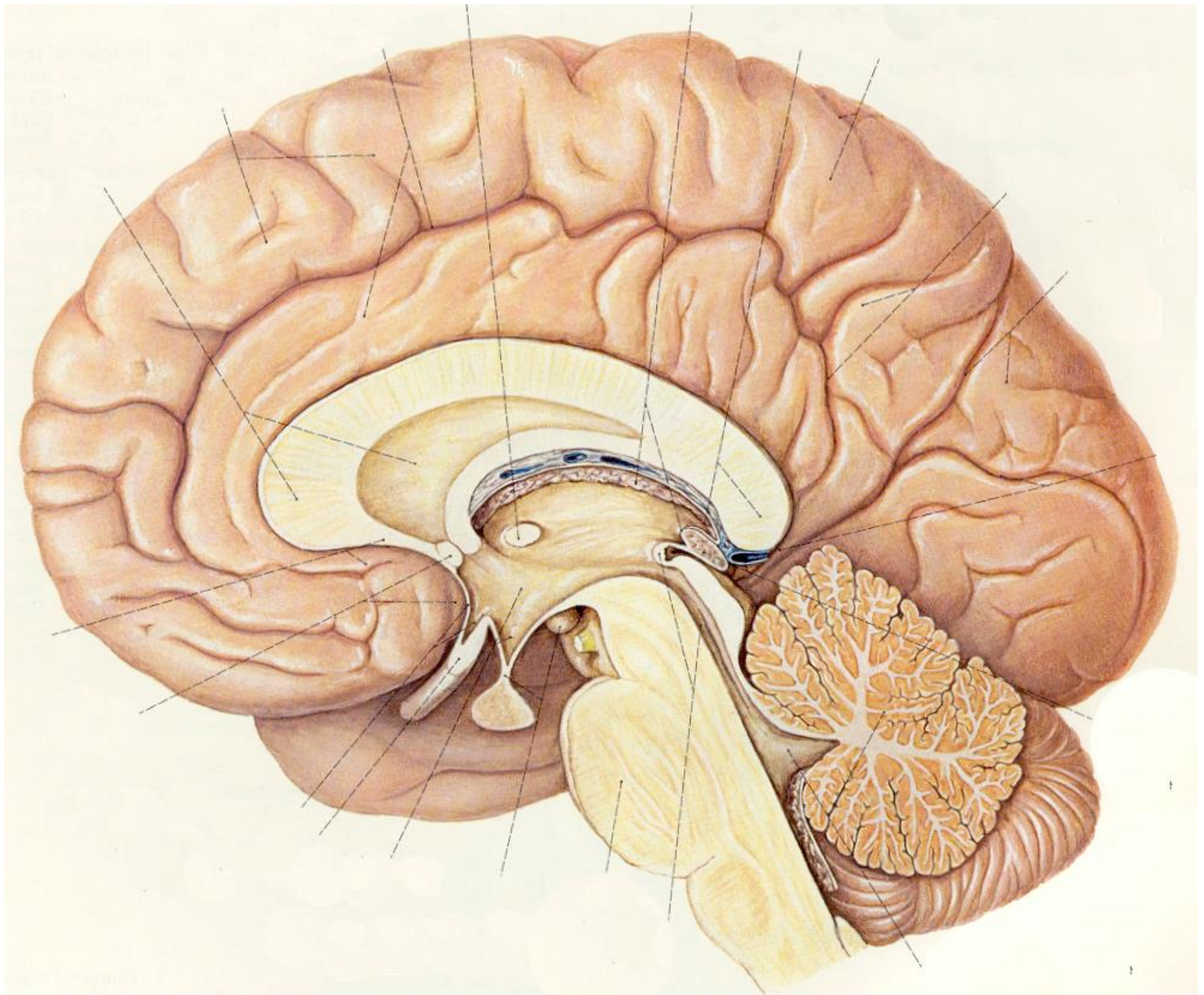


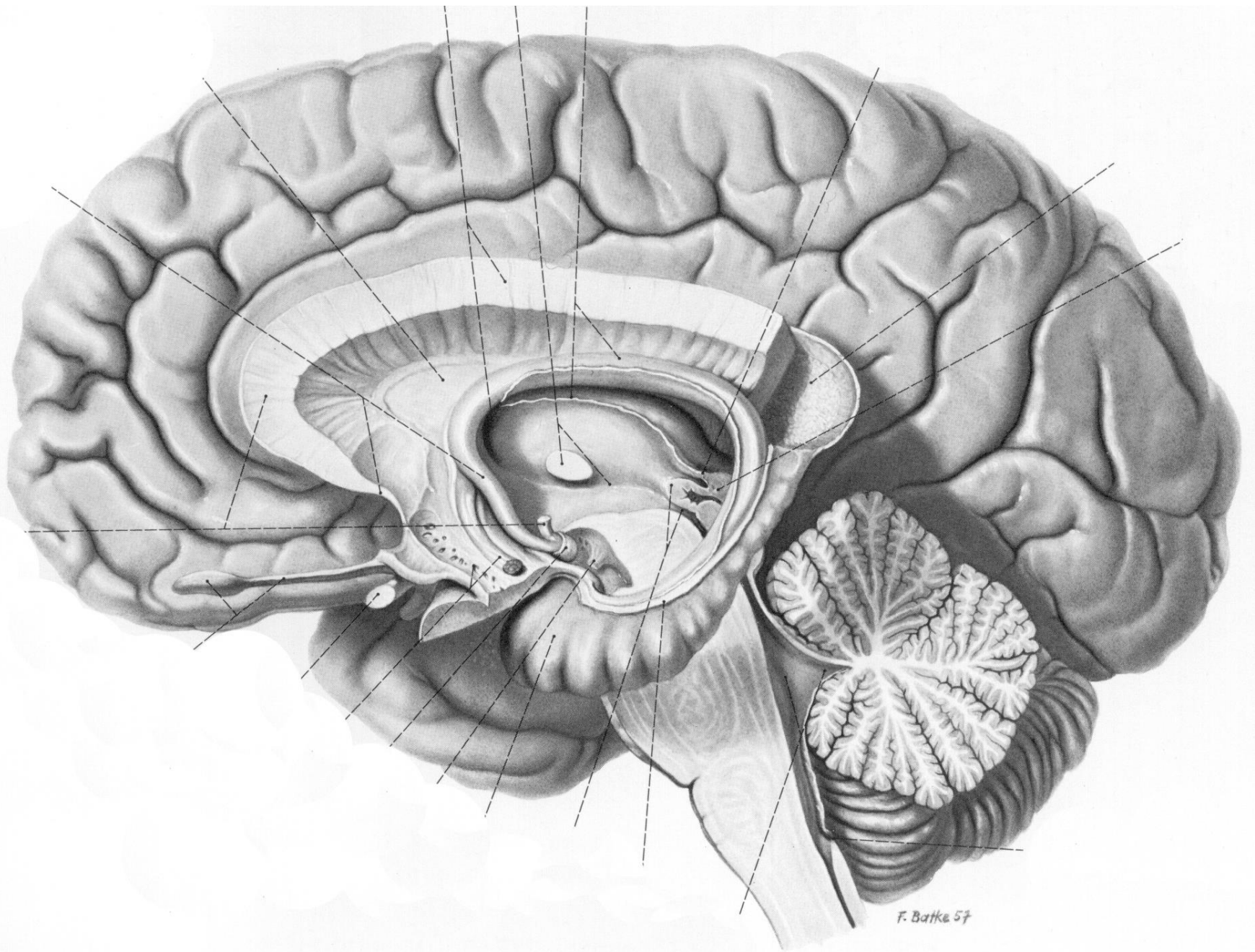
Siber

Hemispherium cerebri Facies superolateralis (convexa)

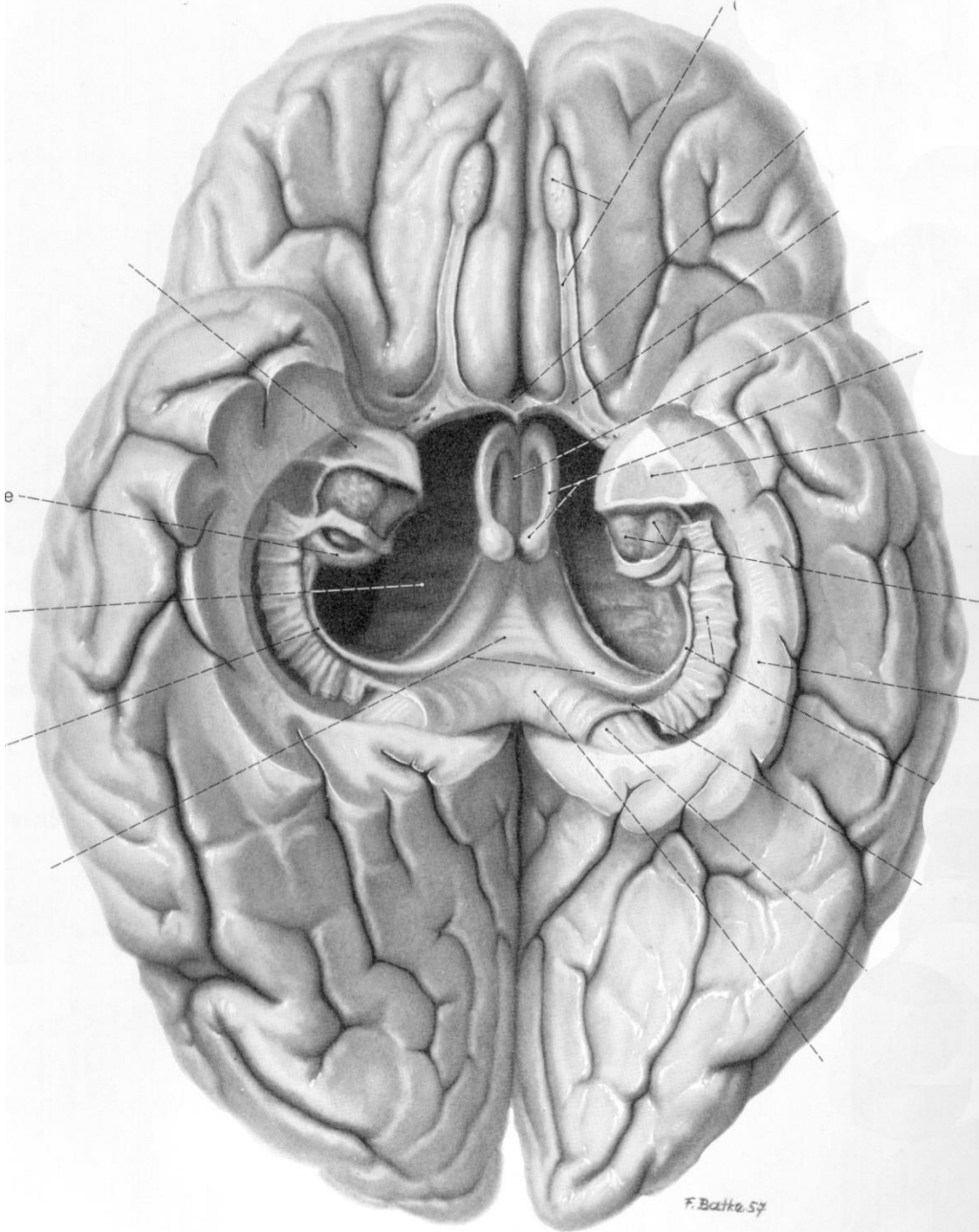


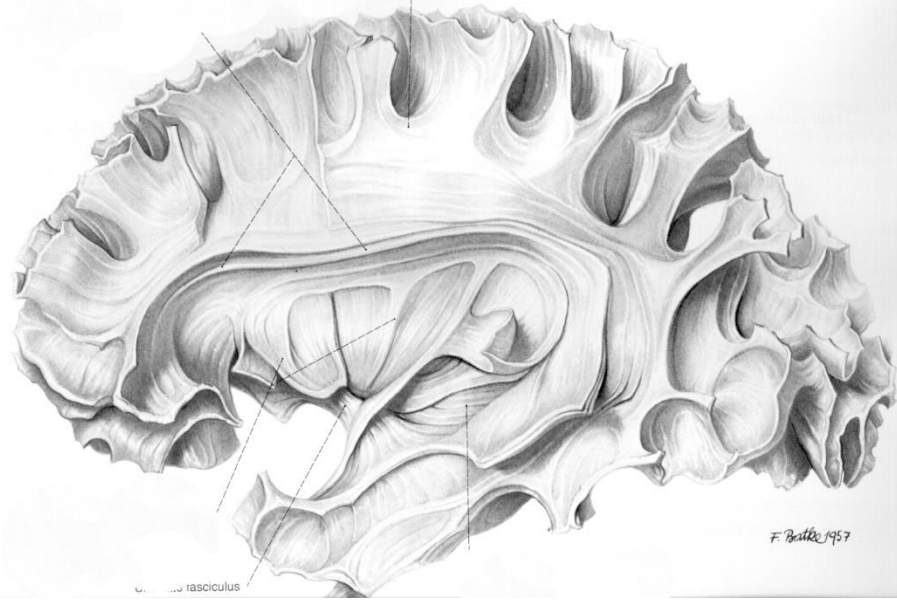
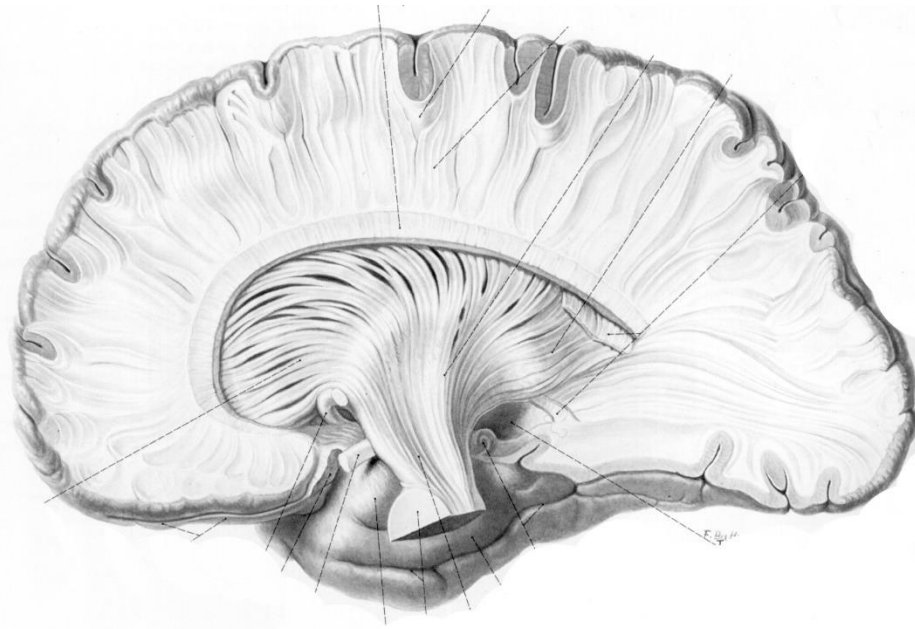


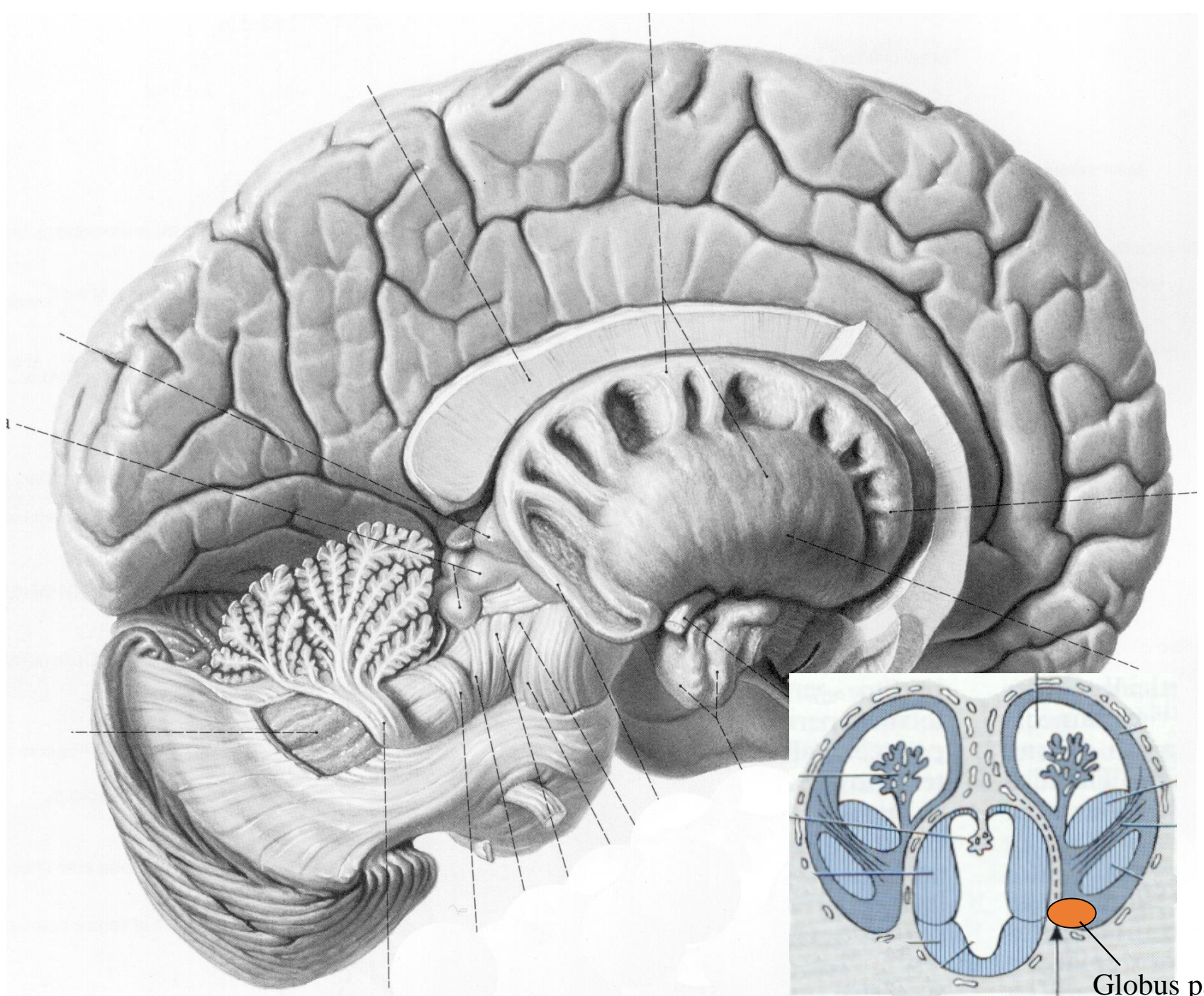




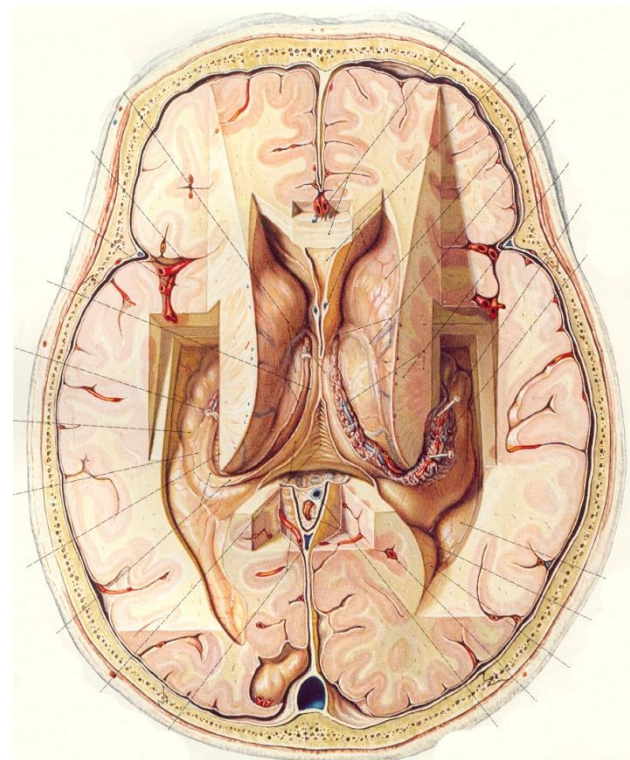
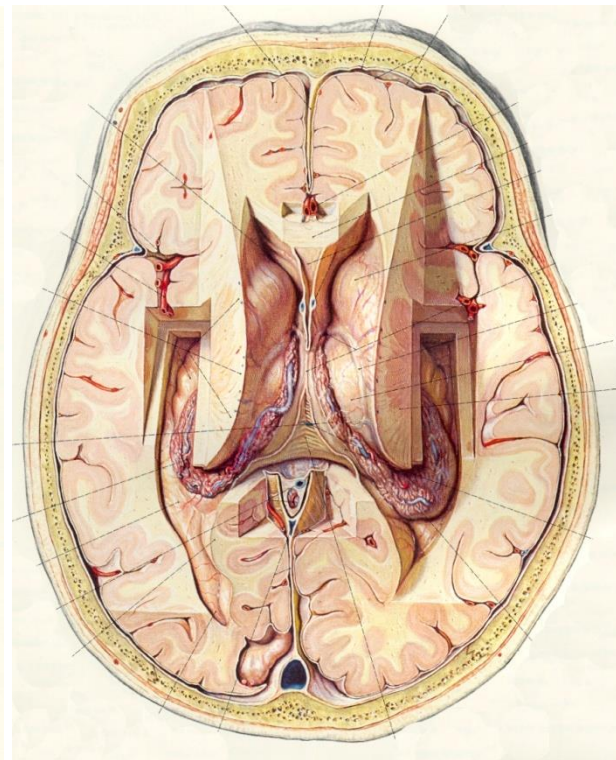
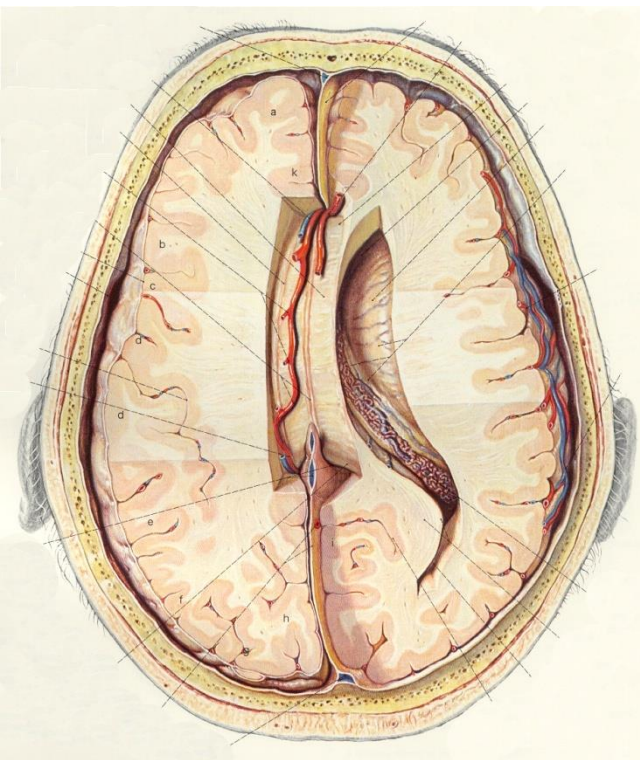
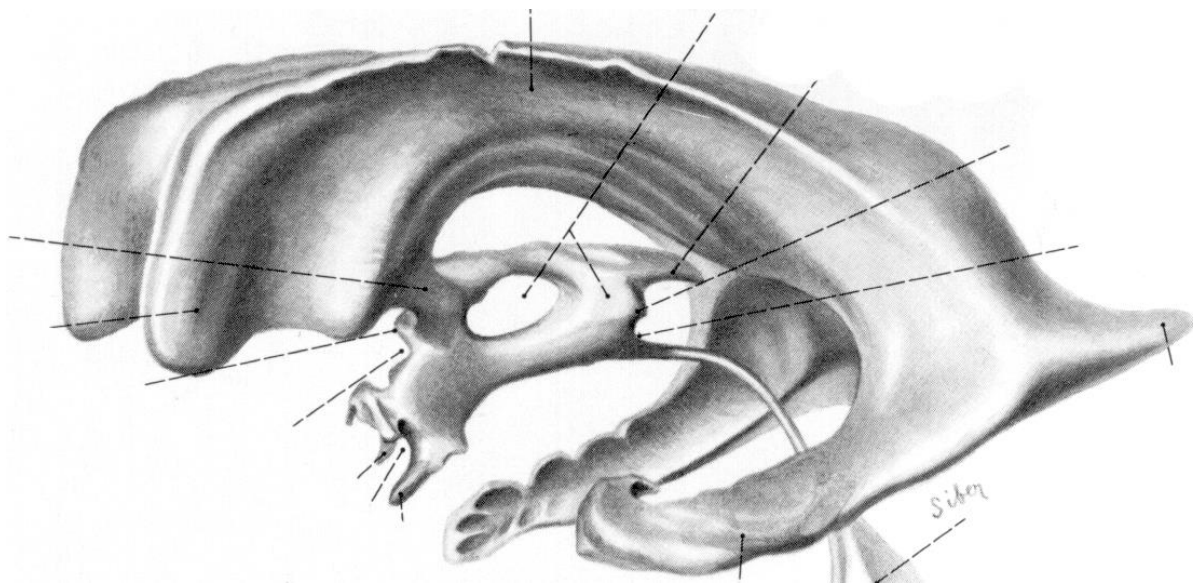
F. Batke 57

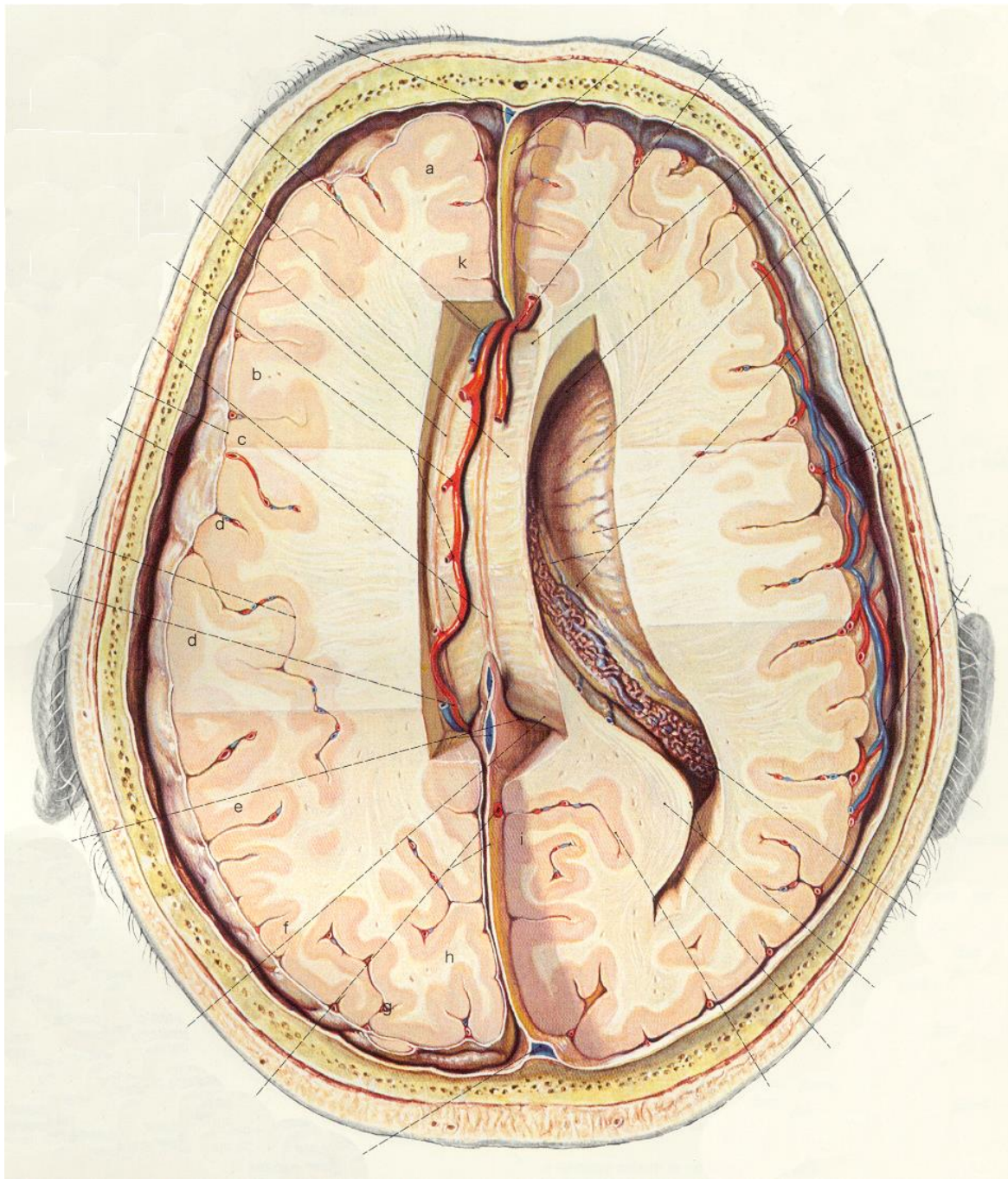


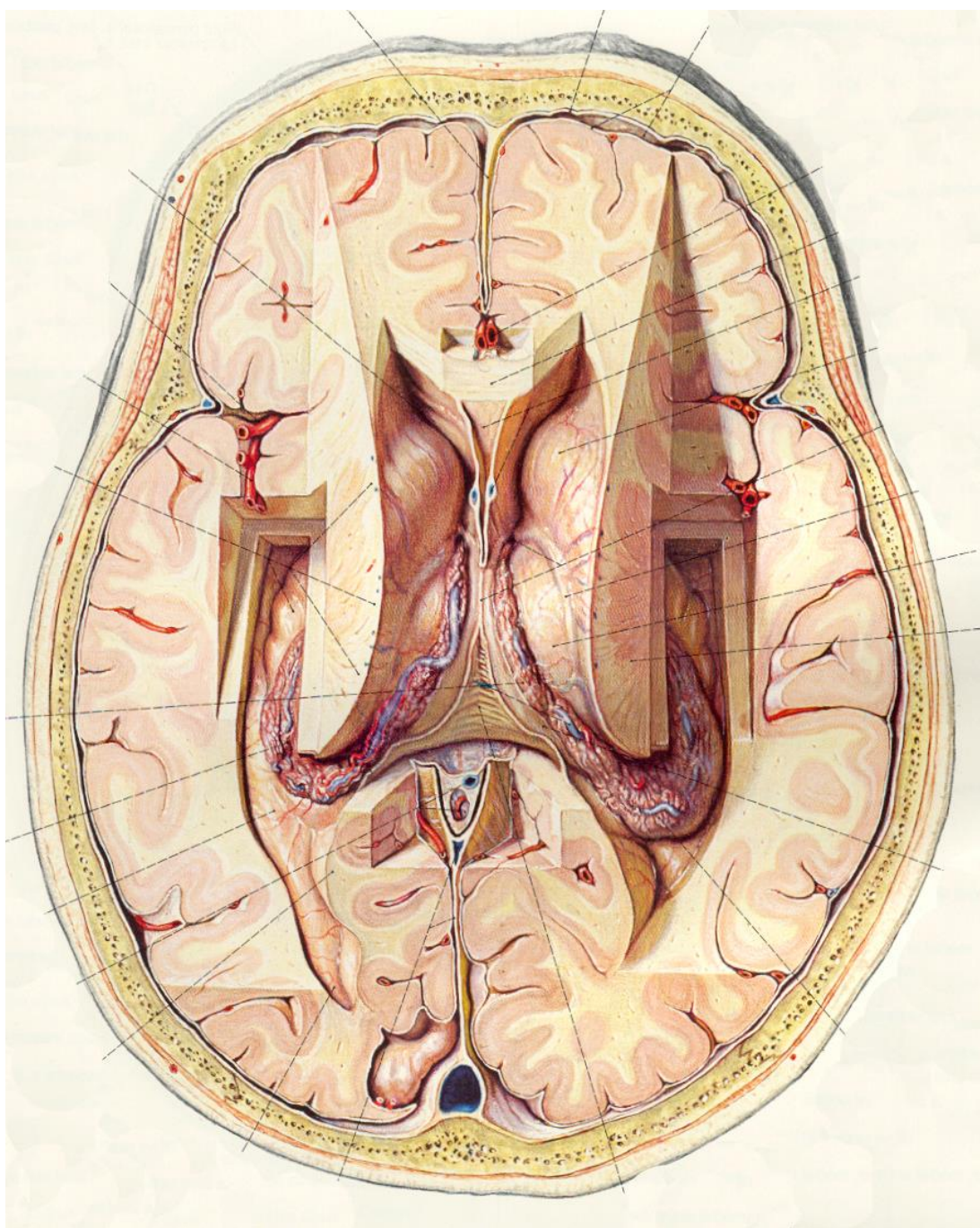




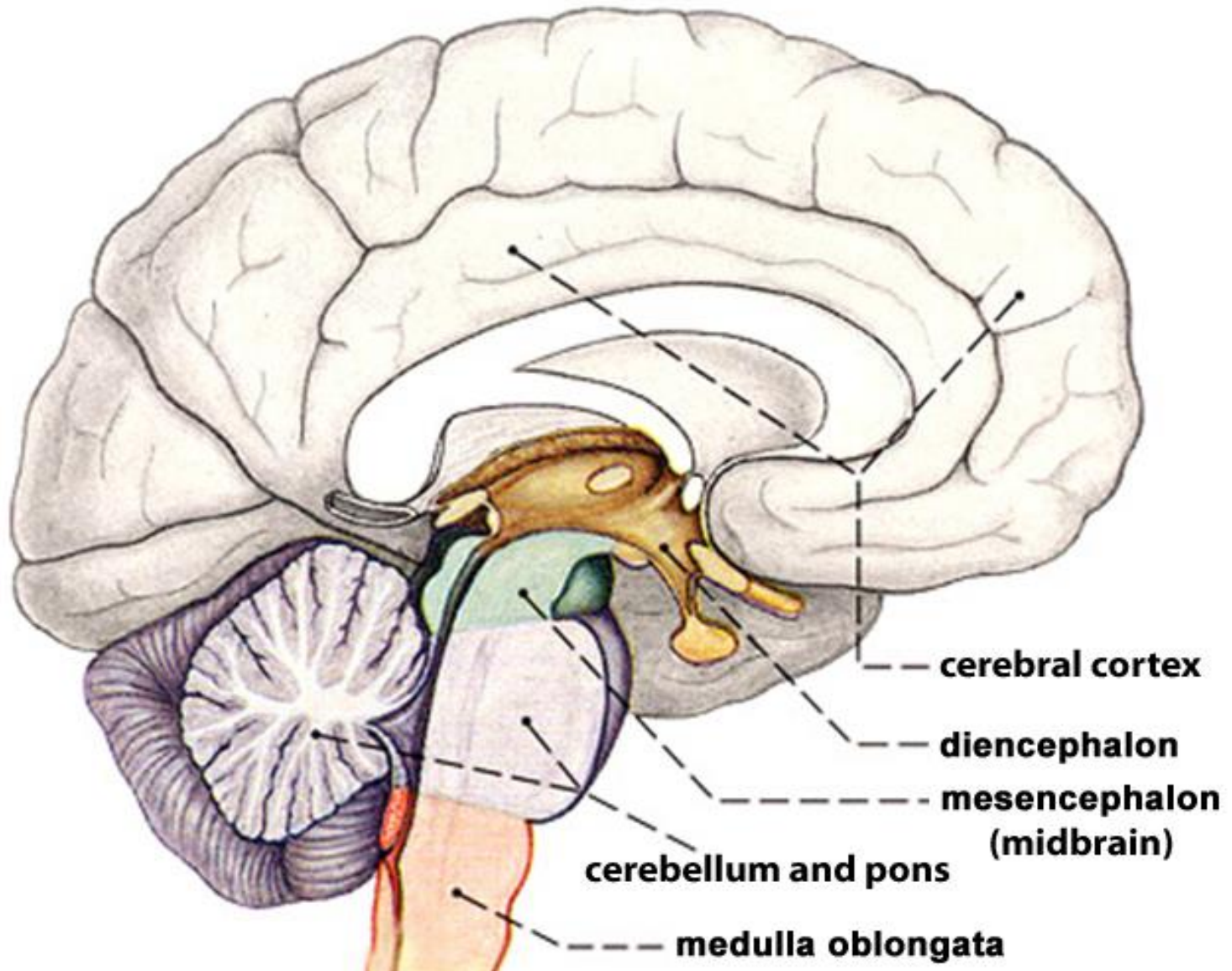
Globus pallidus







Topographie des Diencephalon



Bestandteile des Diencephalon

•Thalamus

•Epithalamus

- Corpus pineale
- Habenula
- Trigonum habenulae
- Nuclei habenulares
- Stria medullaris
- Commissura habenularum

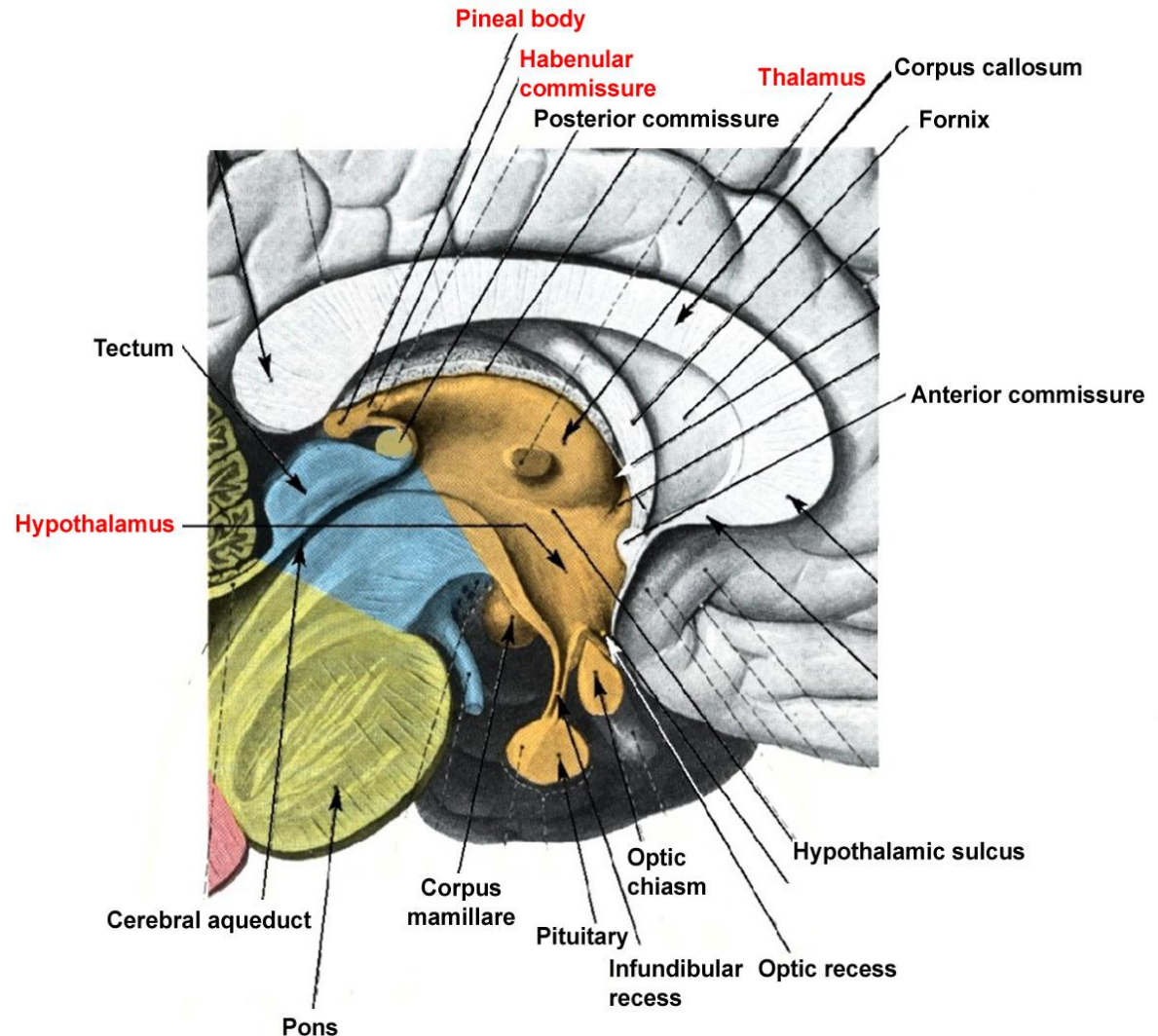
•Metathalamus

- Corpus geniculatum mediale
- Corpus geniculatum laterale

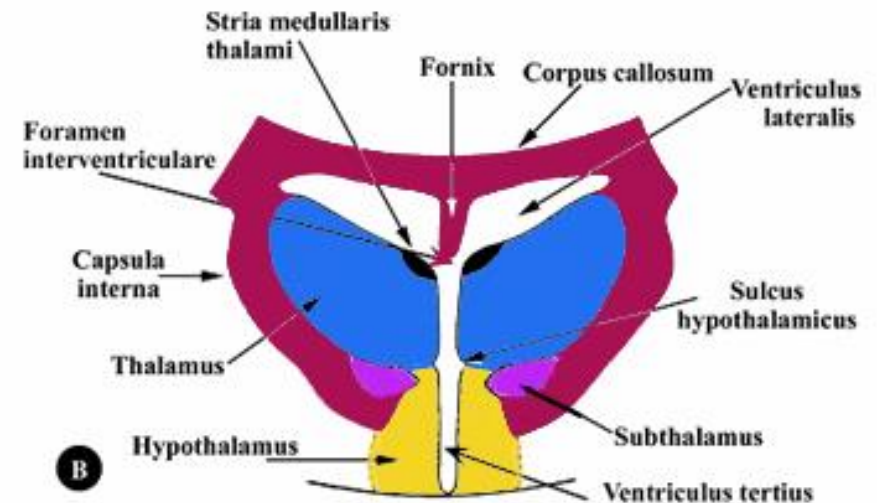
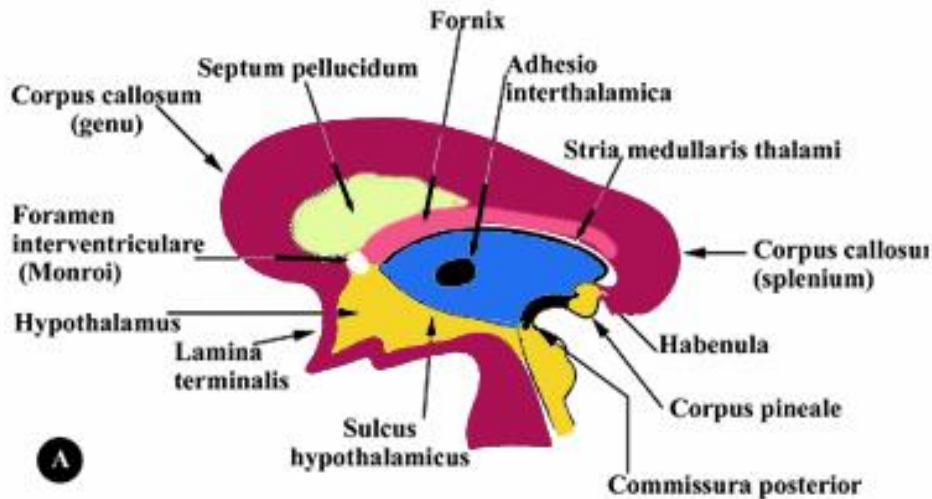
•Subthalamus

- Nucl. subthalamicus
- Zona incerta
- H Felder (v. Forel)

•Hypothalamus

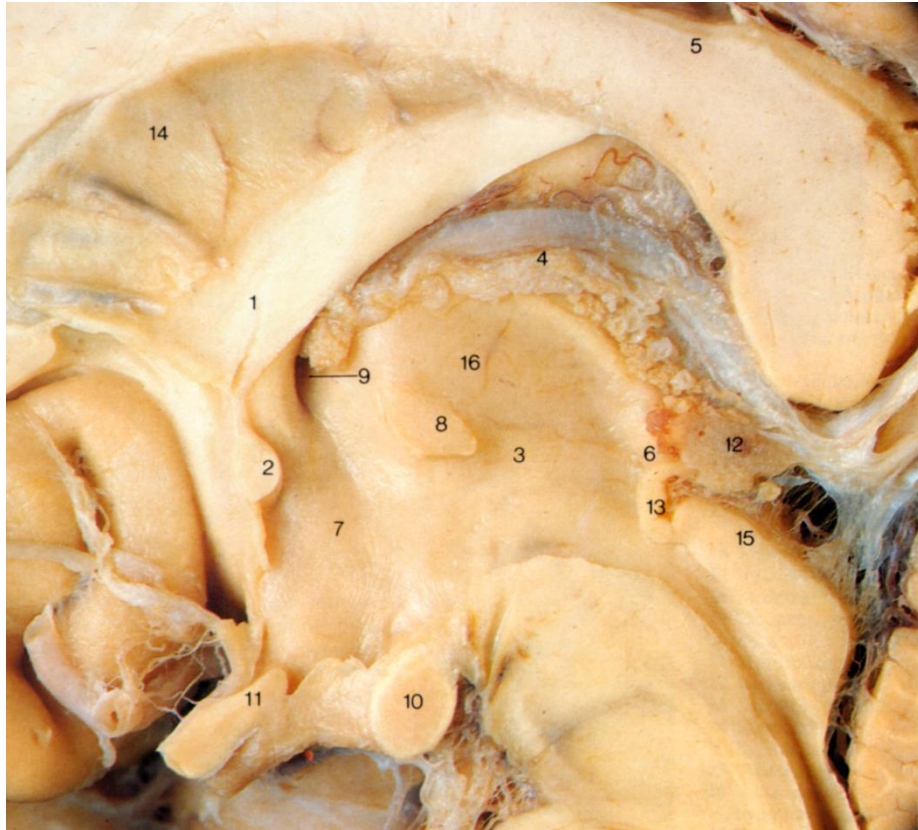


Mediansagittaler (A) und frontaler (B) Schnitt des Zwischenhirns



Topographie des dritten Ventrikels

1. Fornix
2. Commissura ant.
3. Sulcus hypothalamicus
4. Tela choroidea ventr. III.
5. Corpus callosum
6. Commissura habenularum
7. Hypothalamus
8. Adhaesio interthalamica
9. Foramen interventriculare
10. Corpus mamillare
11. Chiasma opticum
12. Corpus pineale
13. Commissura posterior
14. Septum pellucidum
15. Lamina tecti
16. Thalamus



Ventrale Ansicht vom Hypothalamus

1. Chiasma opticum

2. Infundibulum

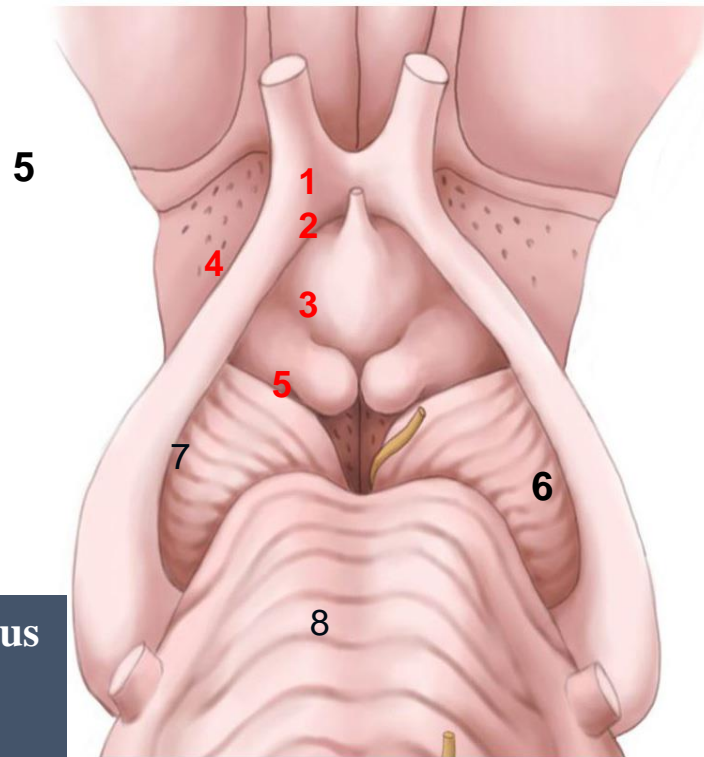
3. Tuber cinereum

4. Tractus opticus

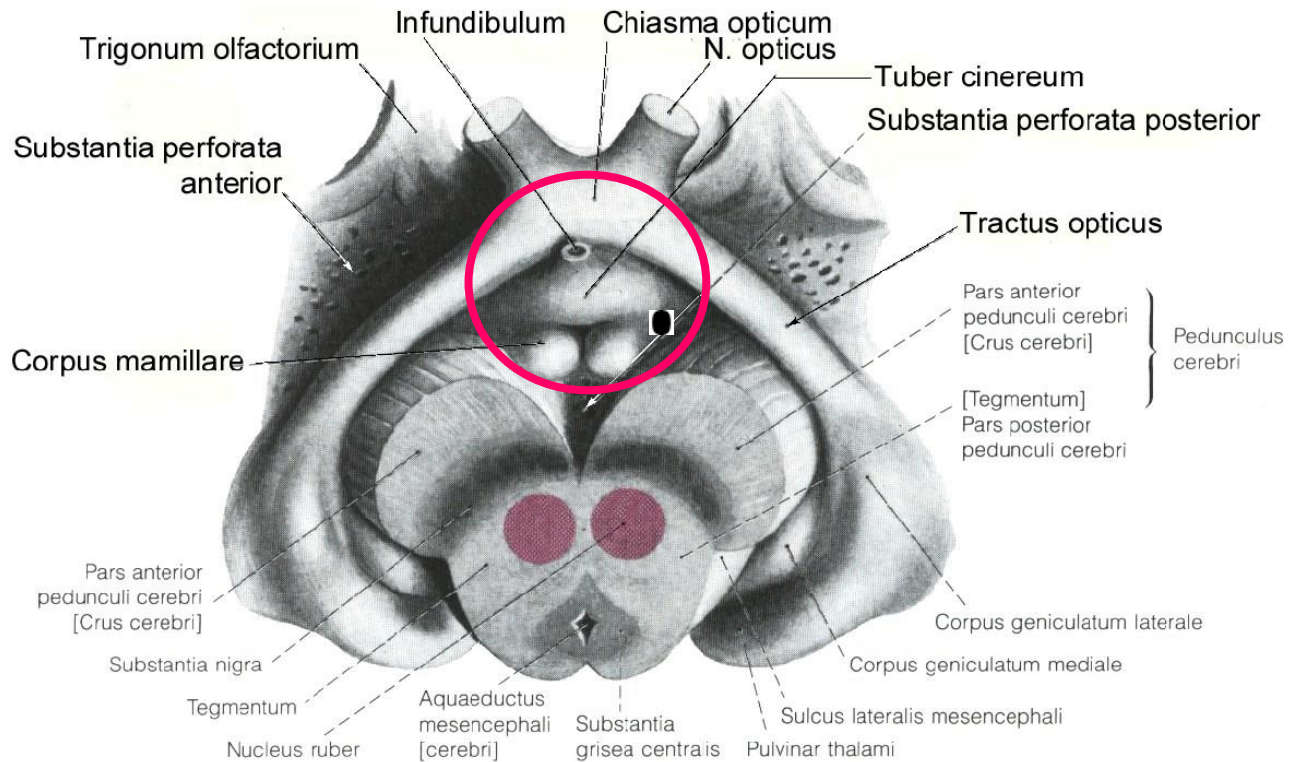
5. Corpus mamillare

7. Pedunculus cerebellaris medius

8. Pons

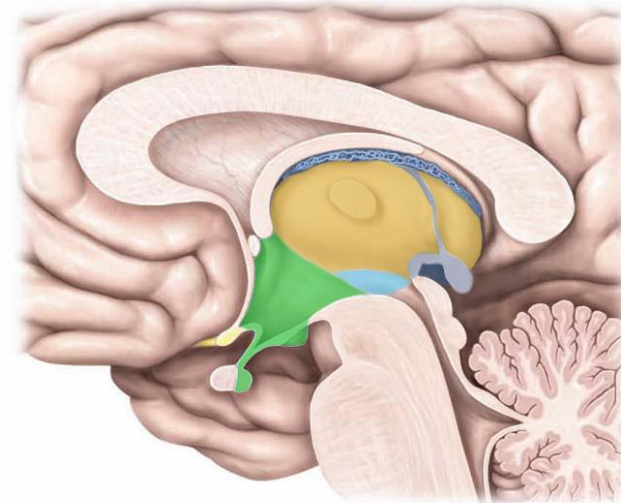


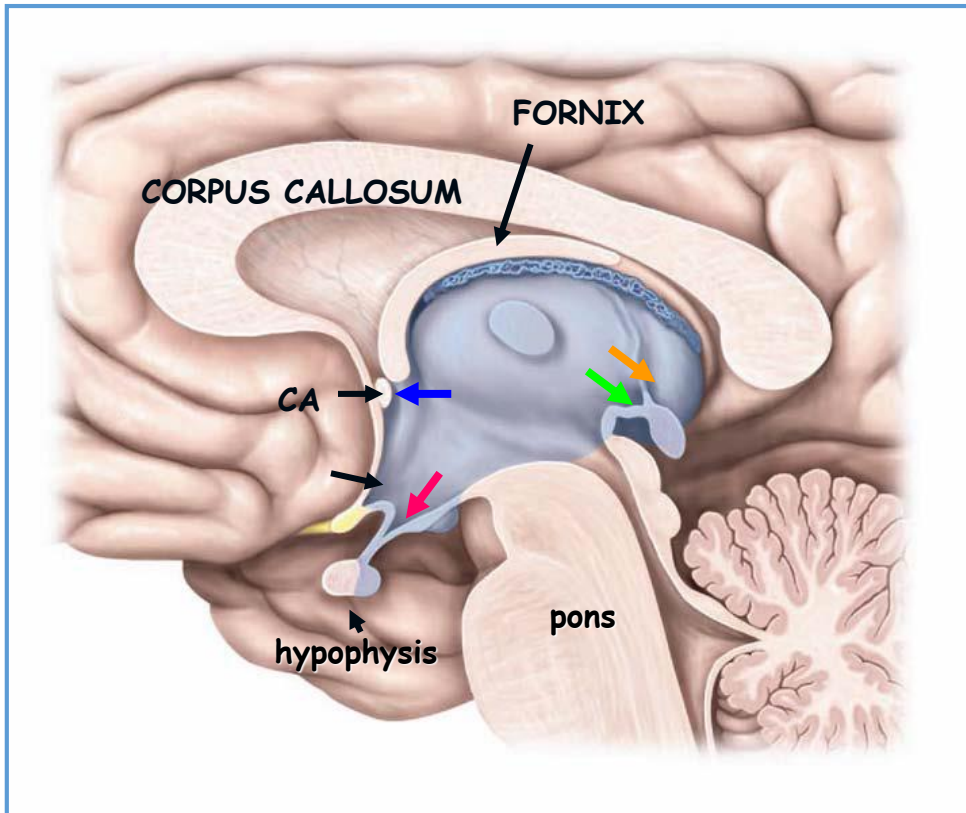
Ventrale Ansicht vom Hypothalamus



Die Wander des dritten Ventrikels

- Lateral:** Thalamus, Hypothalamus
- Anterior:** Columna fornicis, Commissura ant.
Lamina rostralis, Lamina terminalis
- Posterior:** Epithalamus
- Inferior:** Hypothalamus (Chiasma opticum,
Infundibulum, Corpus mamillare)
- Superior:** Tela choroidea ventriculi tertii





Recessus des dritten Ventrikels

recessus triangularis

recessus opticus

recessus infundibularis

recessus suprapinealis

recessus pinealis

Recessus des dritten Ventrikels

R. triangularis

R. opticus

R. infundibularis

R. suprapinealis

R. pinealis

