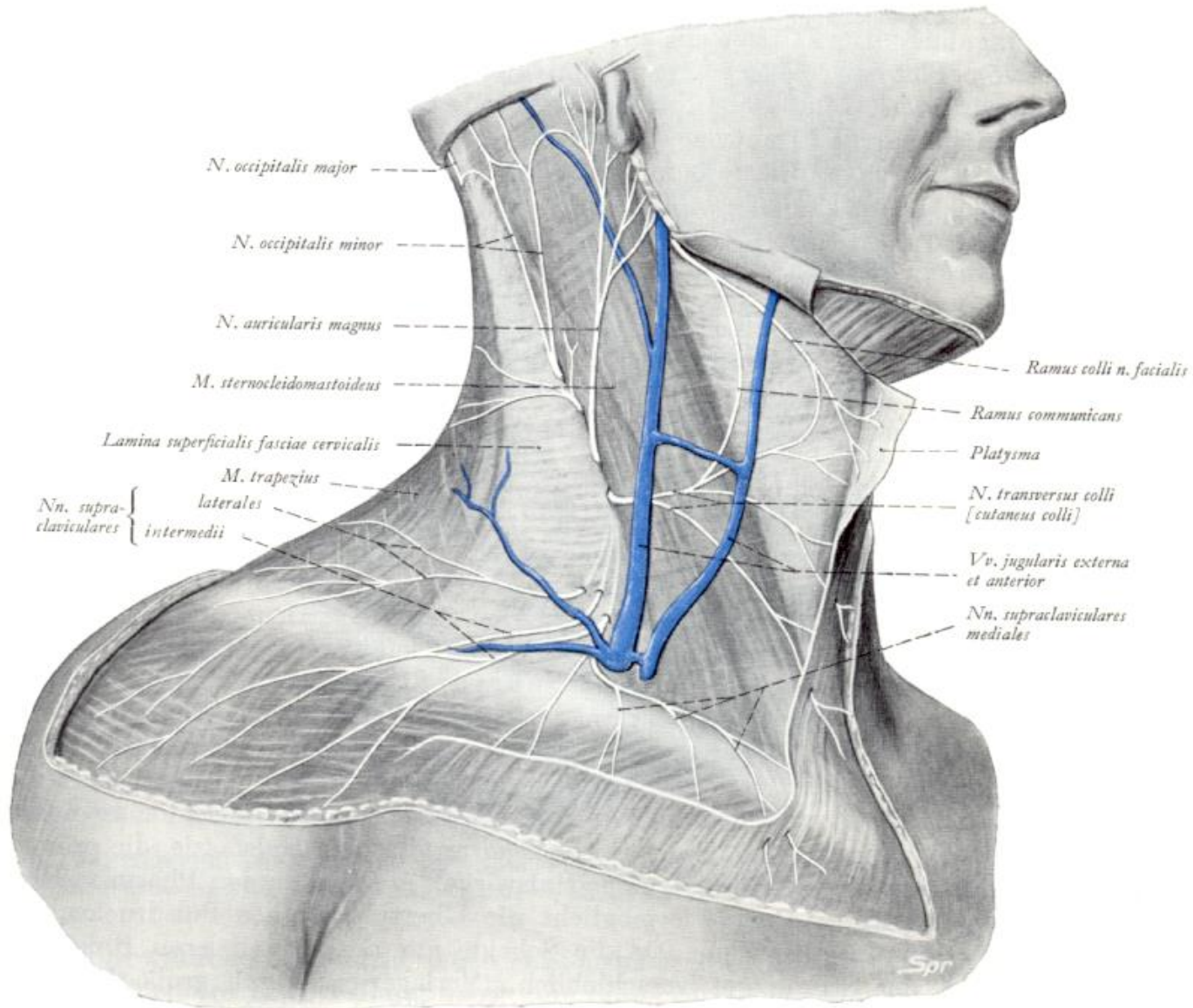


Topographische Anatomie des Halses

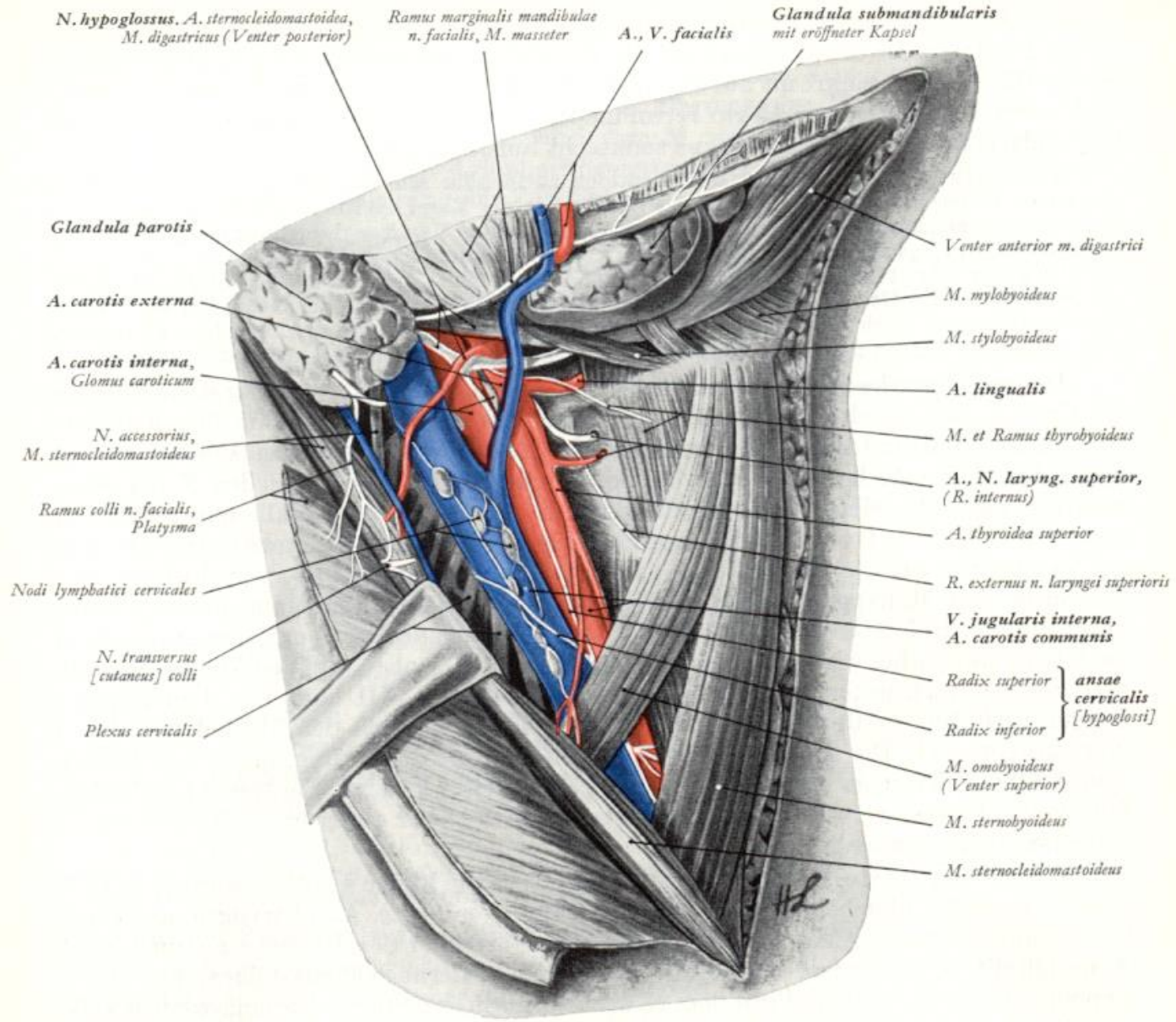
zusammengestellt von

András Csillag

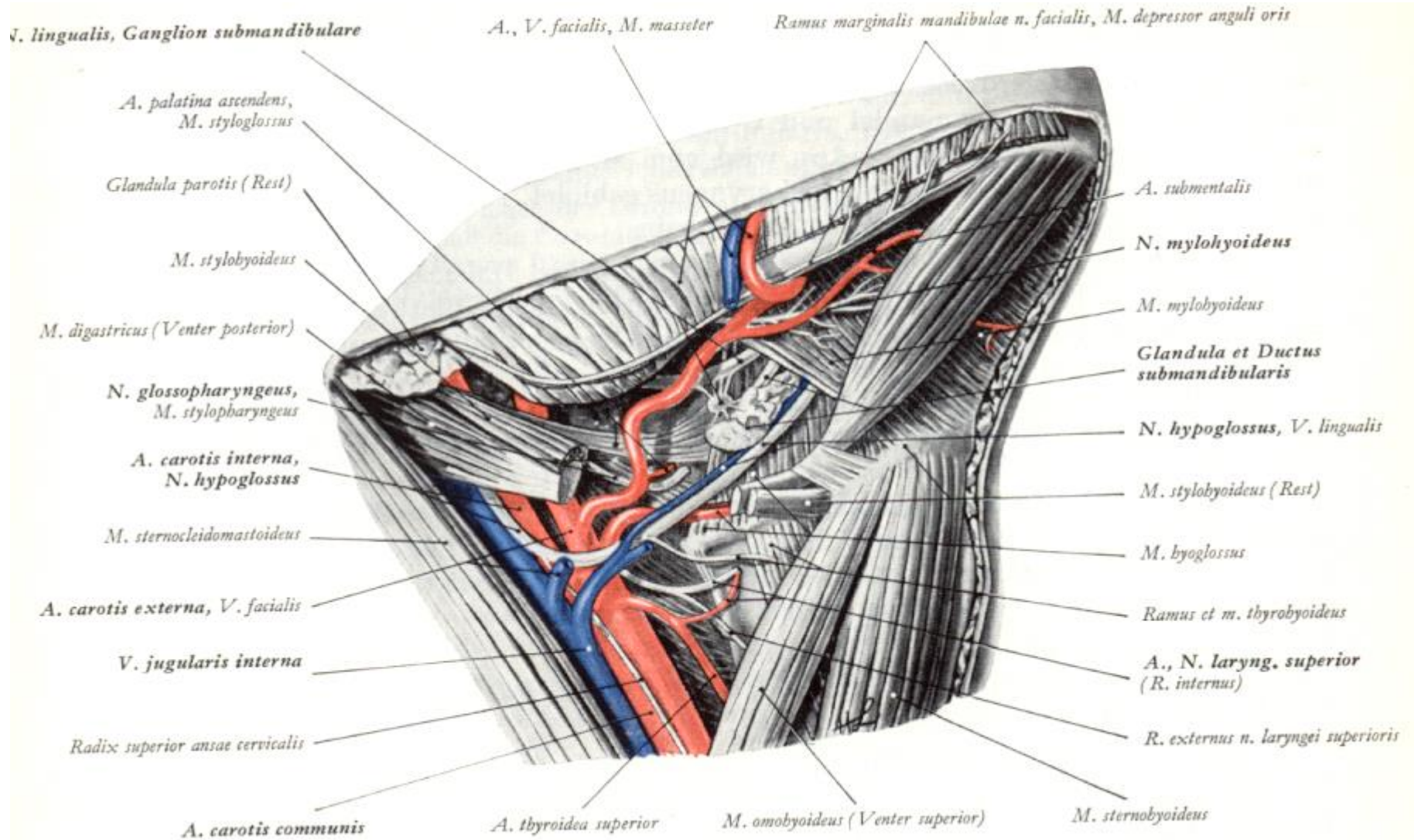
Hautinnervation des Halses



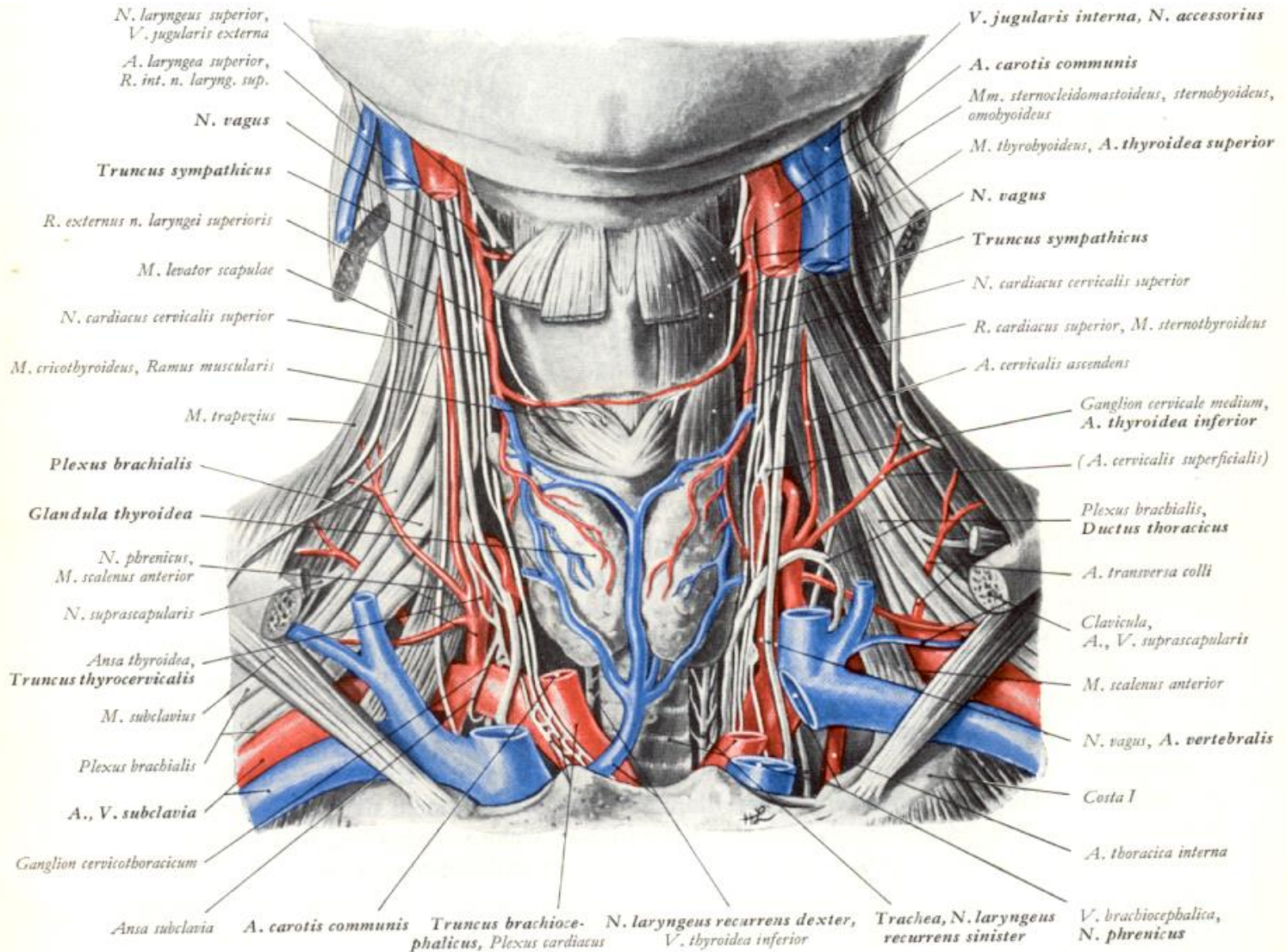
Trigonum submandibulare und Trigonum caroticum (oberflächliche Schicht)



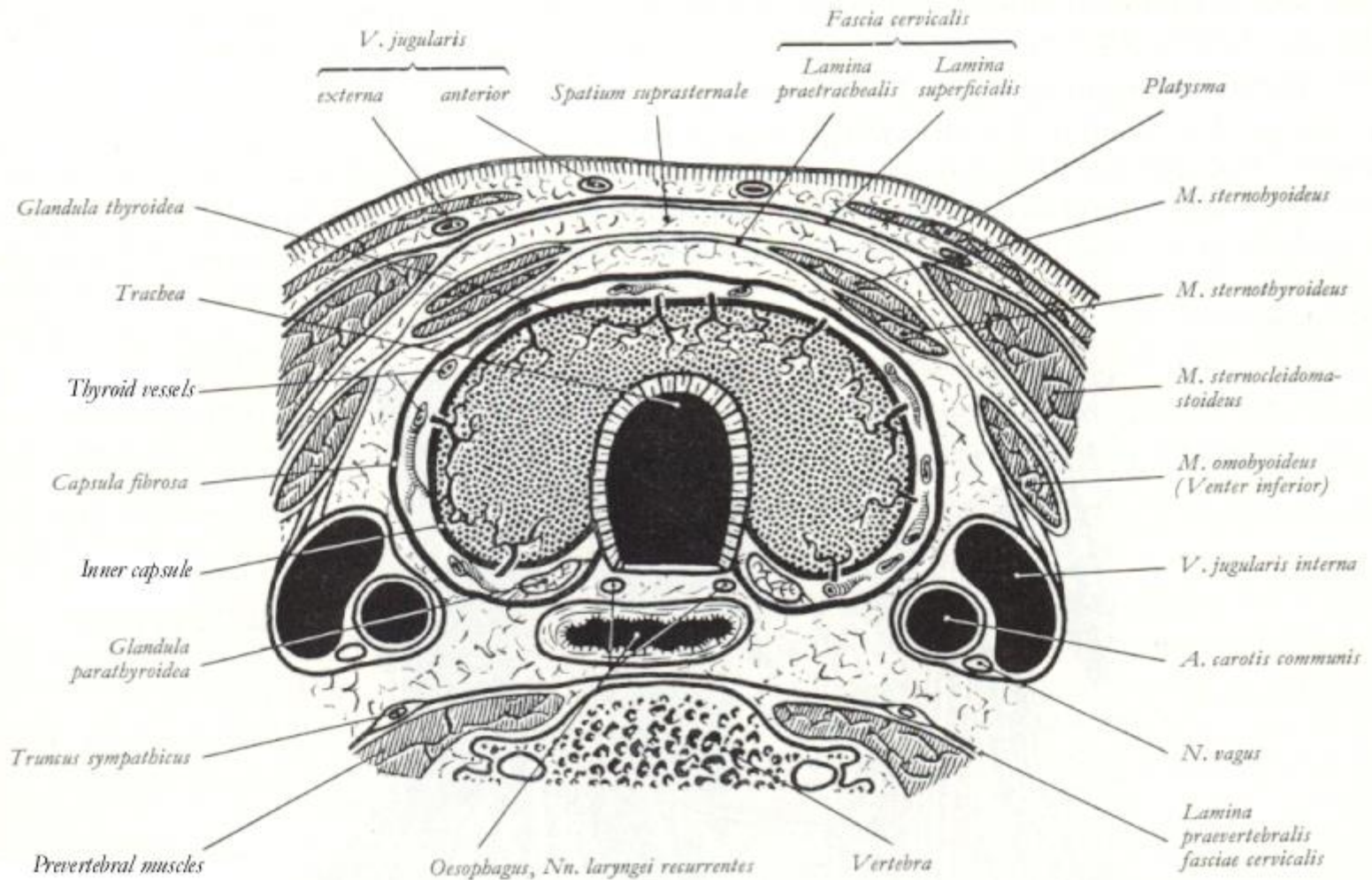
Trigonum submandibulare und Trigonum caroticum (tiefe Schicht)



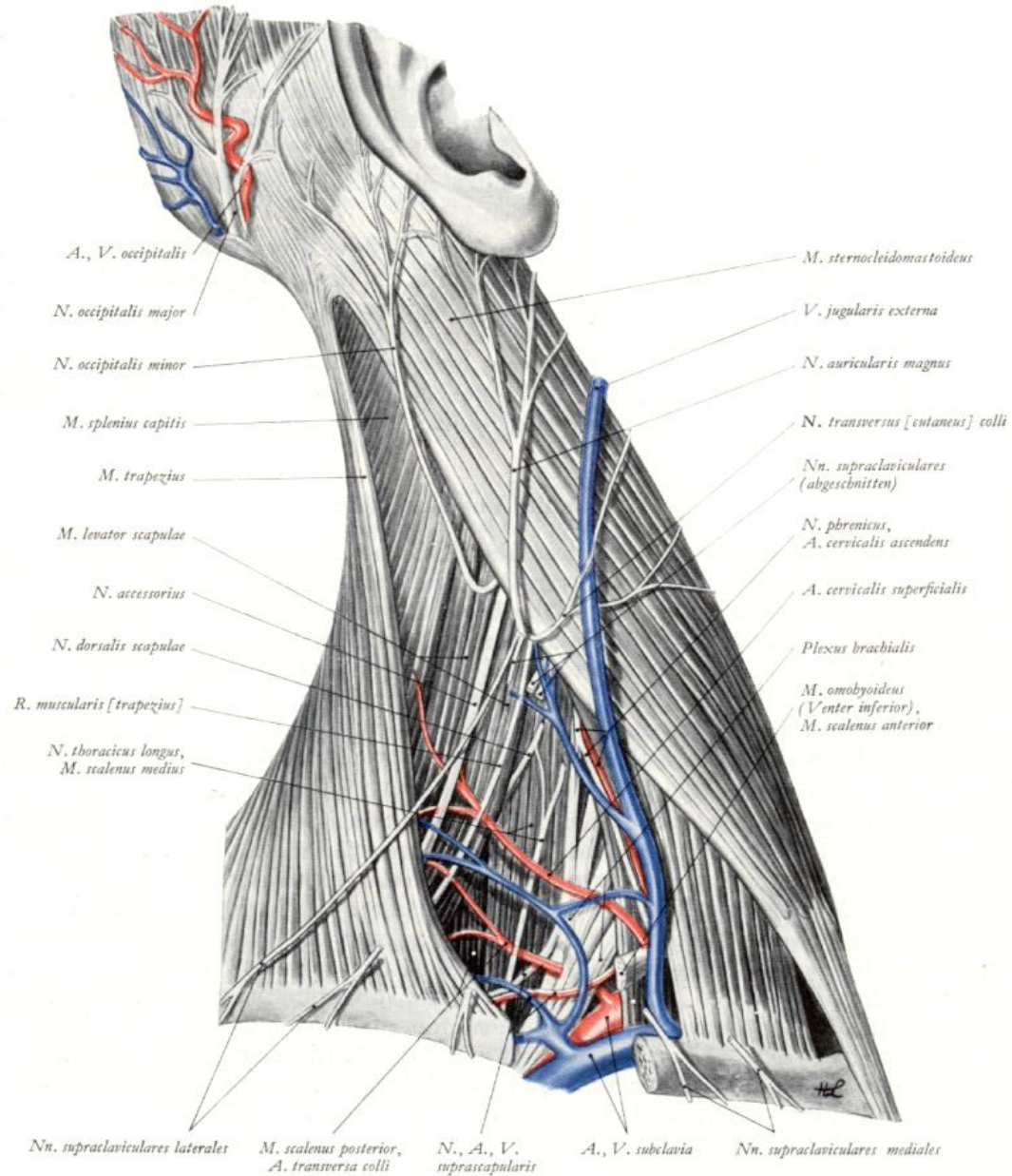
Tiefe Regionen des Halses (vordere Ansicht)



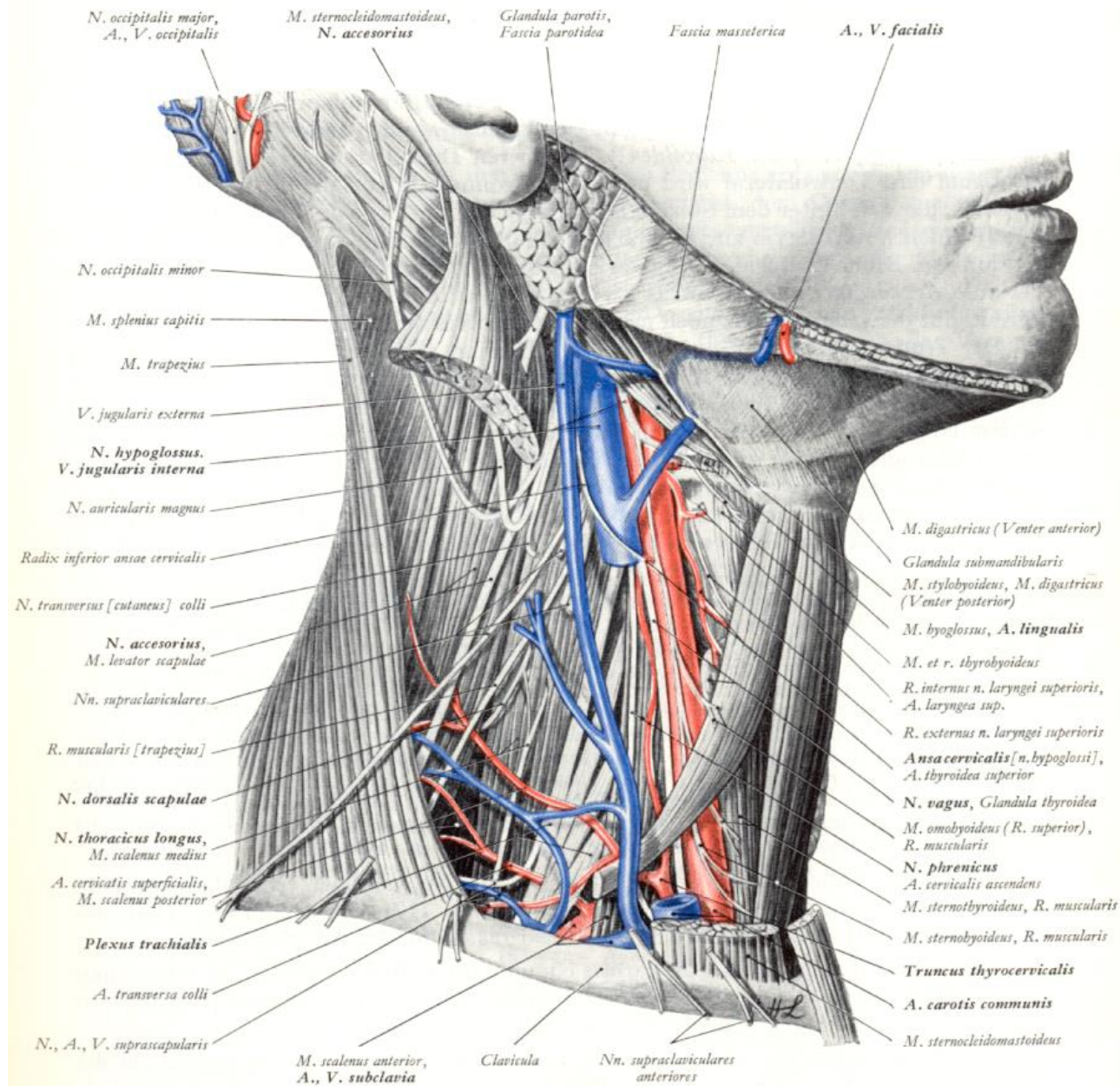
Topographie der Schilddrüse



Trigonum supraclaviculare I.



Trigonum supraclaviculare II.



Faszien und bindegewebige Räume des Halses

