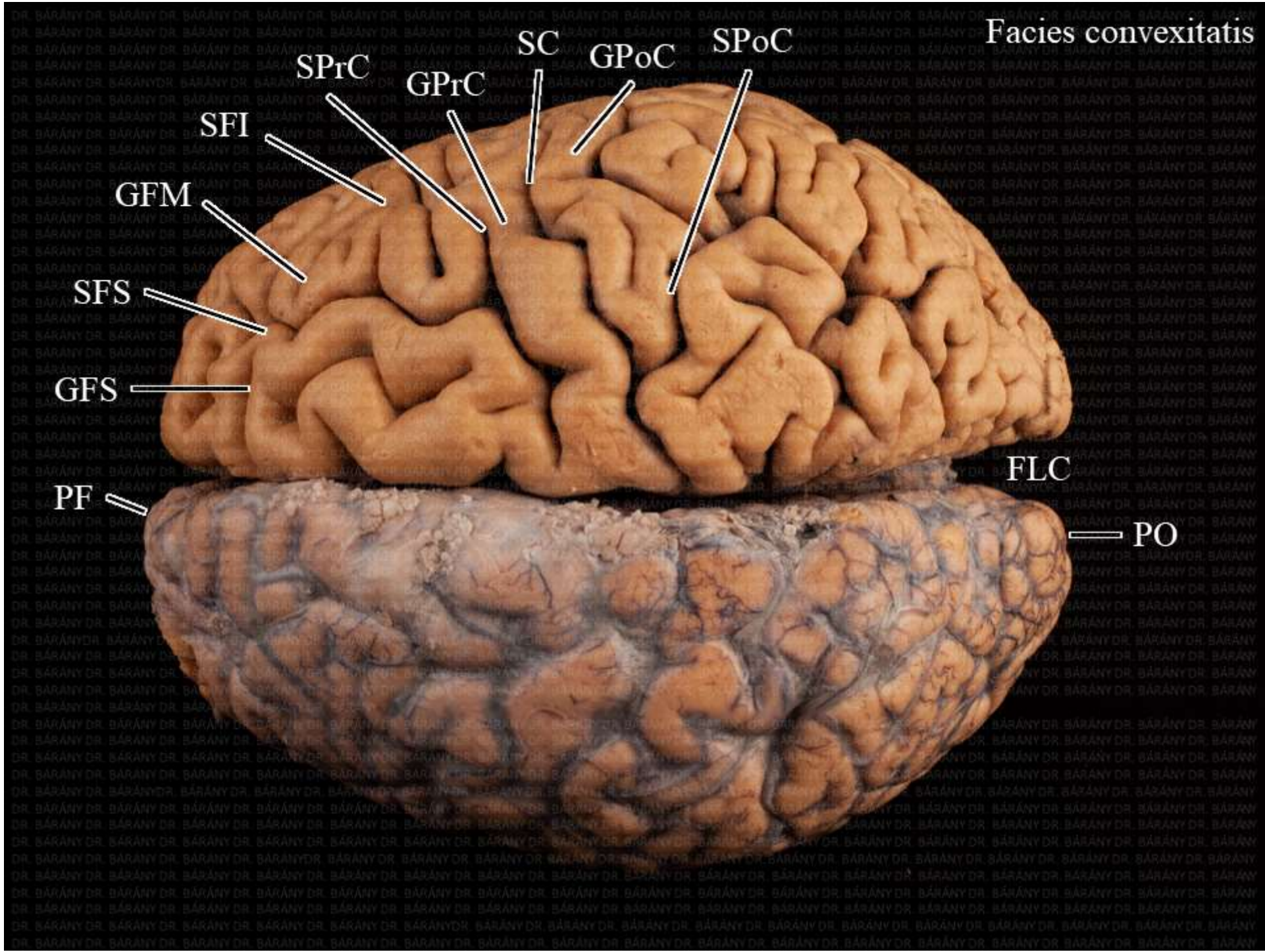
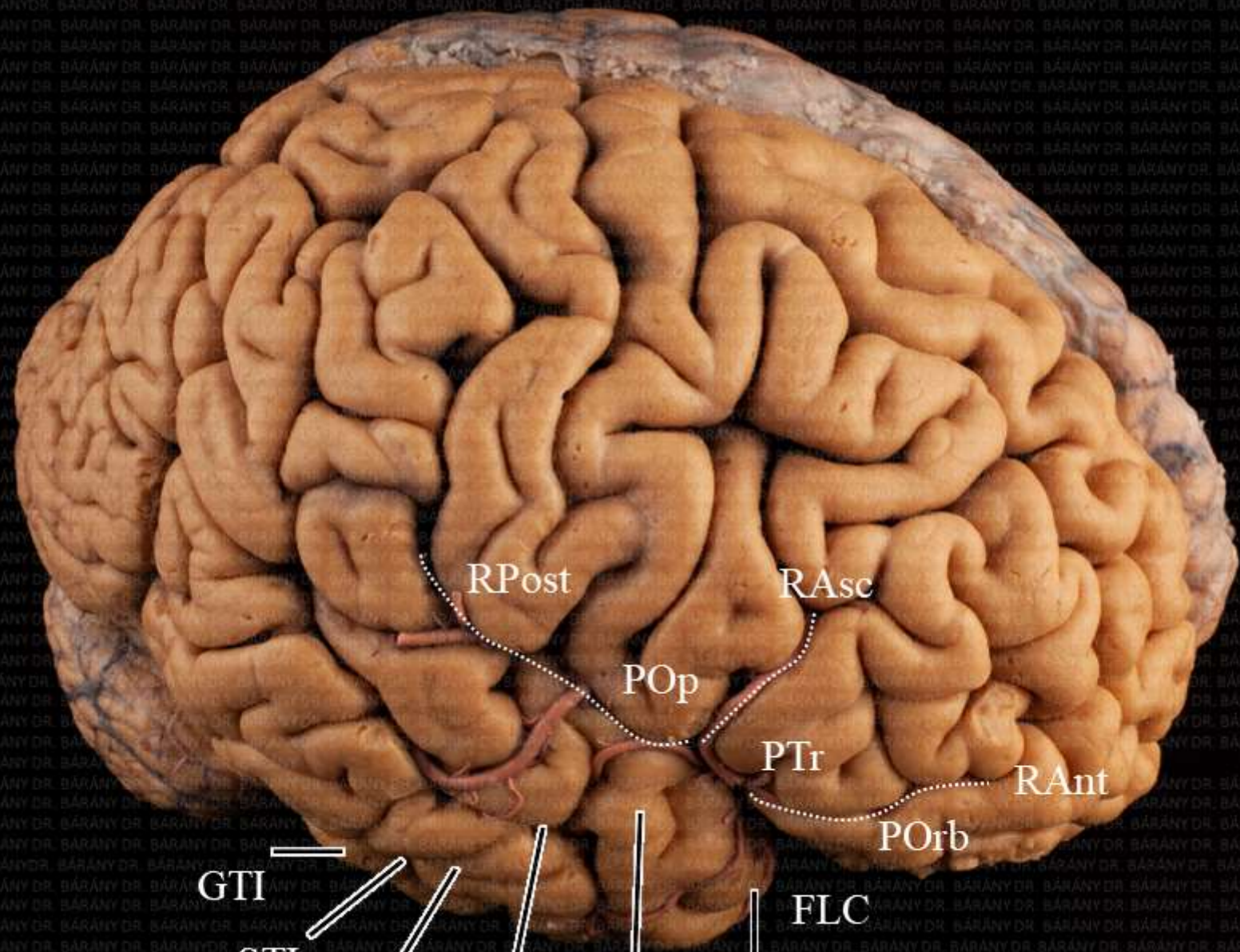


Facies convexitatis

- SPrC
- SFI
- GFM
- SFS
- GFS
- PF
- SC
- GPoC
- SPoC
- FLC
- PO



Facies convexitatis



RPost

RAsc

POp

PTr

RAnt

POrb

GTI

STI

GTM

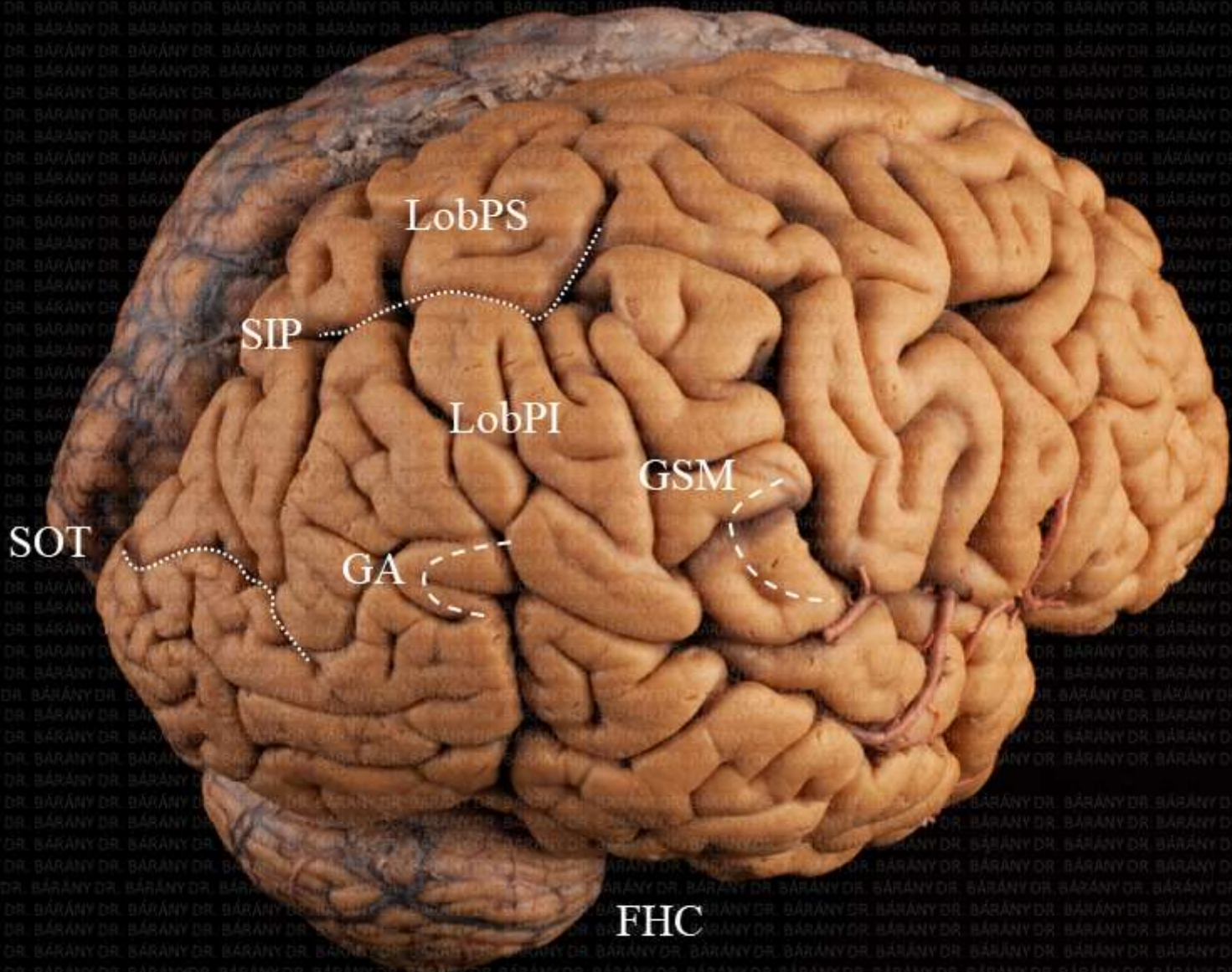
STS

GTS

PT

FLC

Facies convexitatis

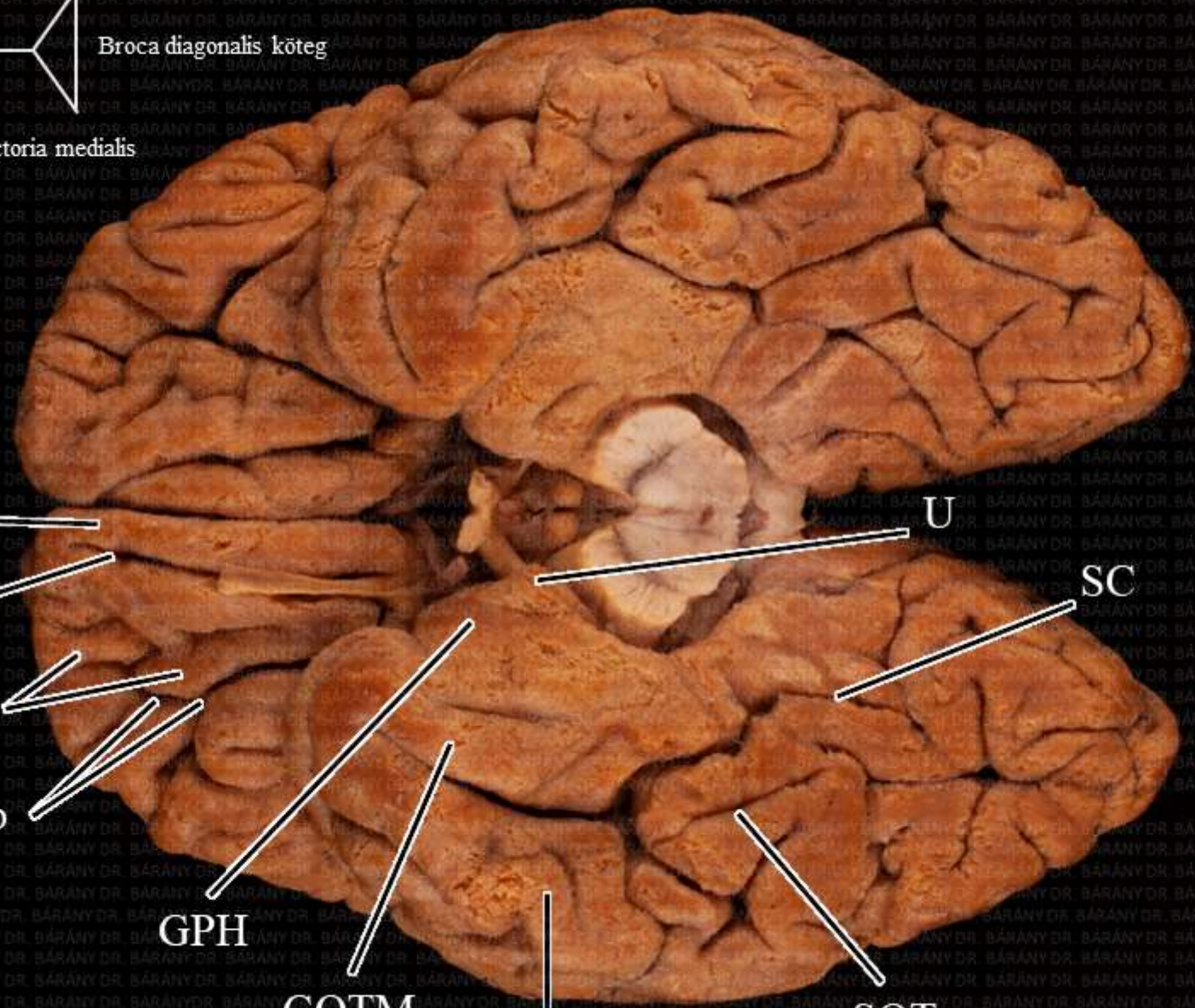


Facies basalis

Stria olfactoria lateralis Substantia perforata anterior



Stria olfactoria medialis



GR

SO

GgOrb

SsOrb

GPH

GOTM

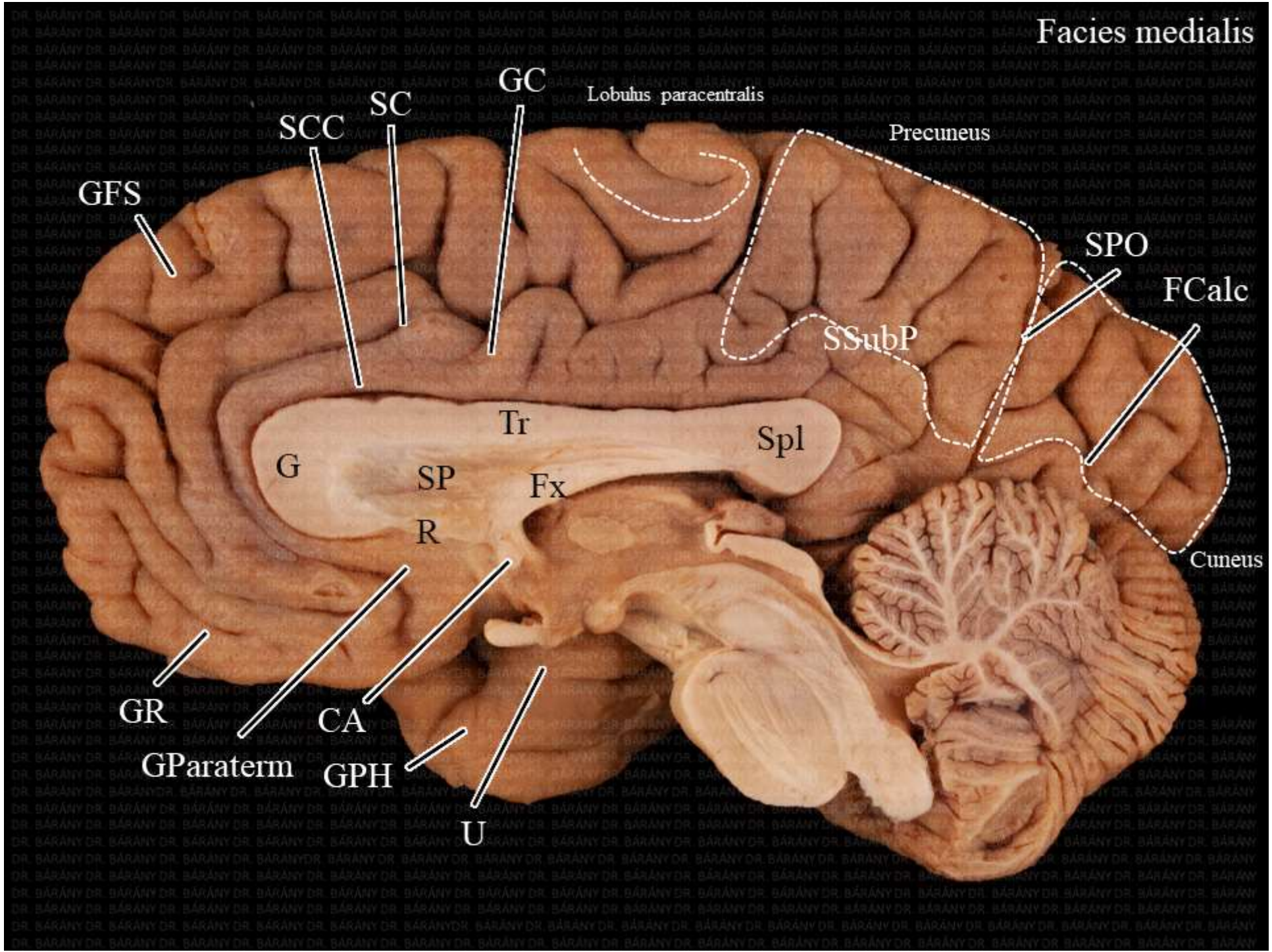
GOTL

U

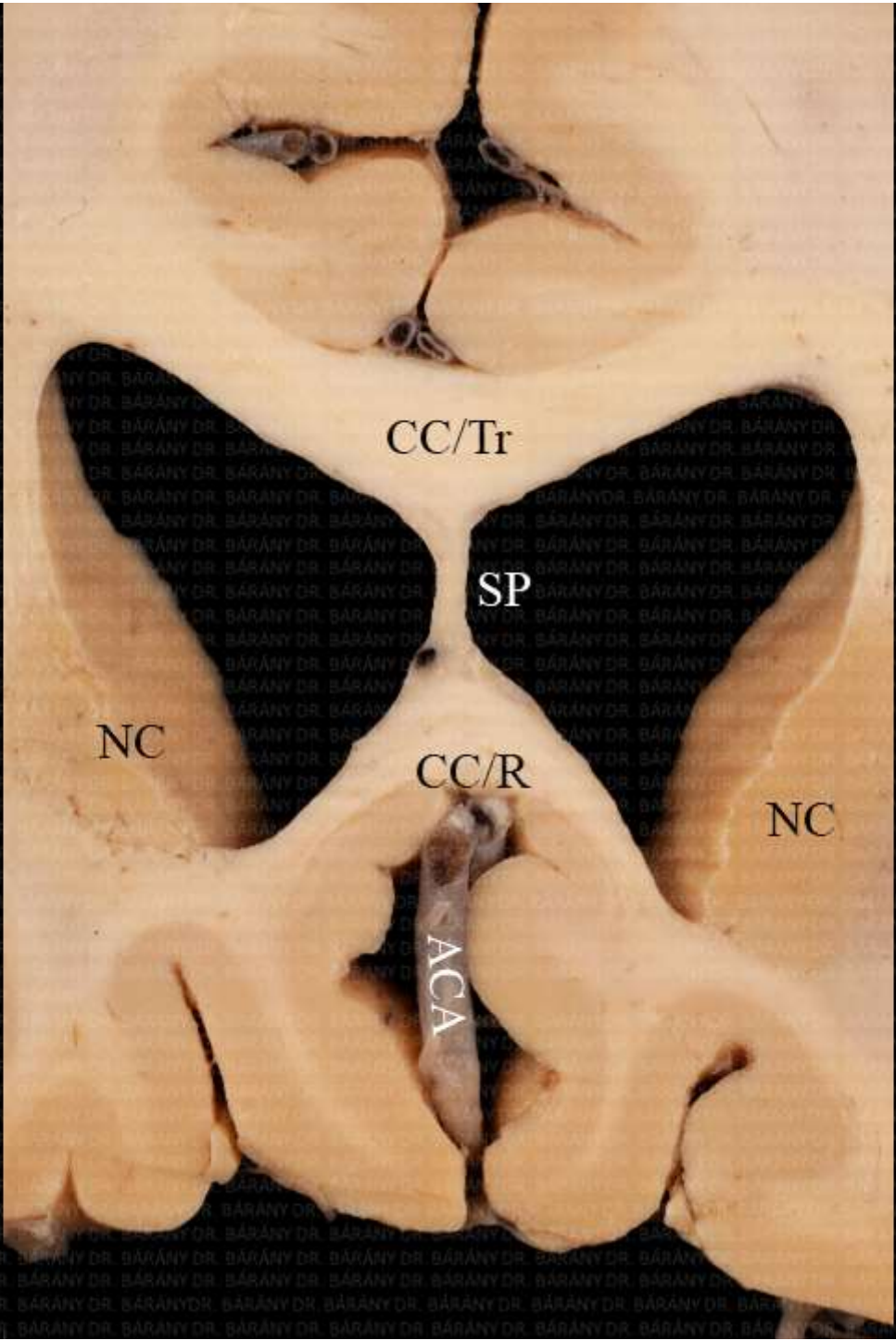
SC

SOT

Facies medialis



Cornu anterius



CC/Tr

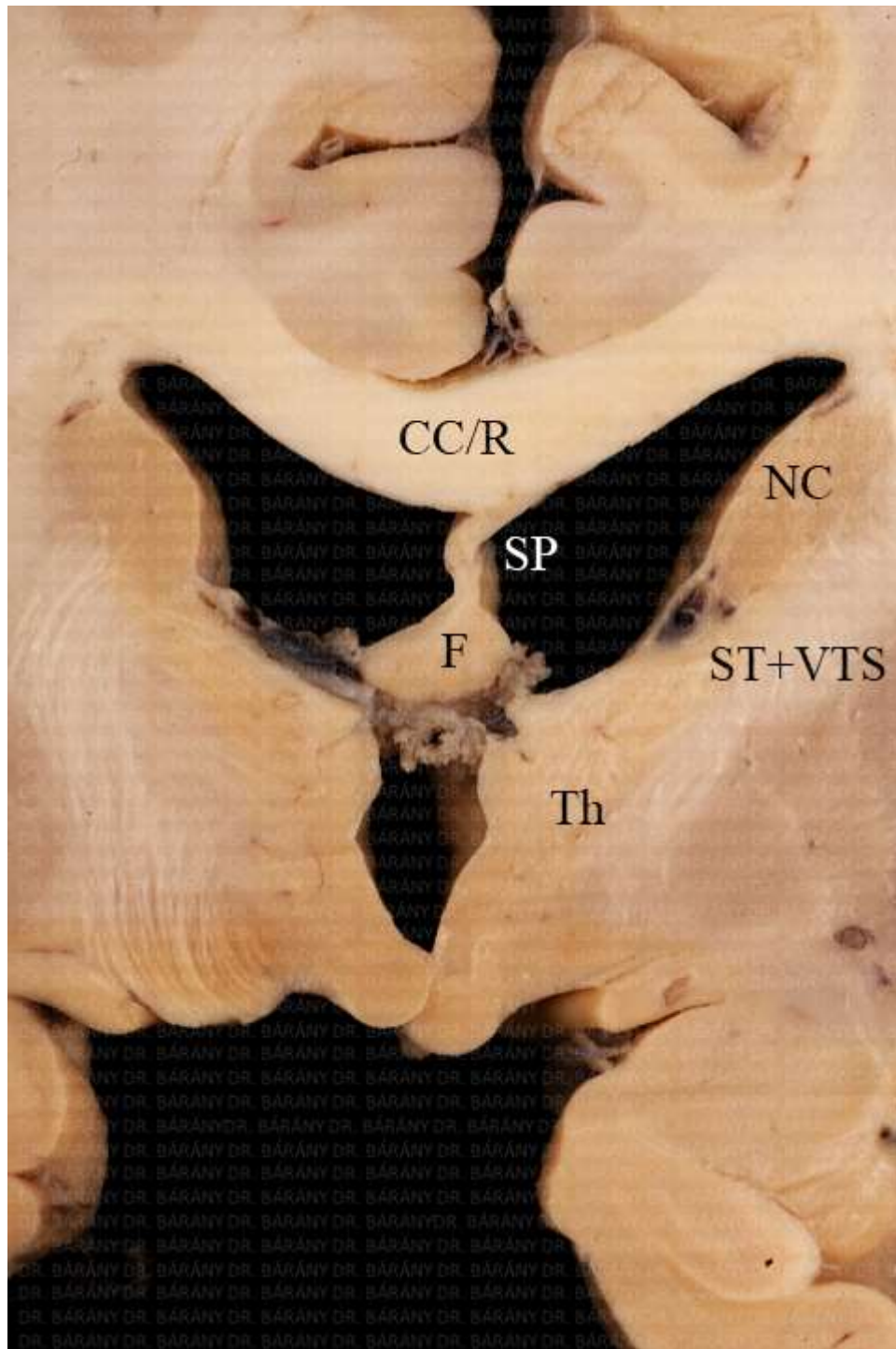
SP

NC

CC/R

NC

ACA



Pars centralis

Ependyma



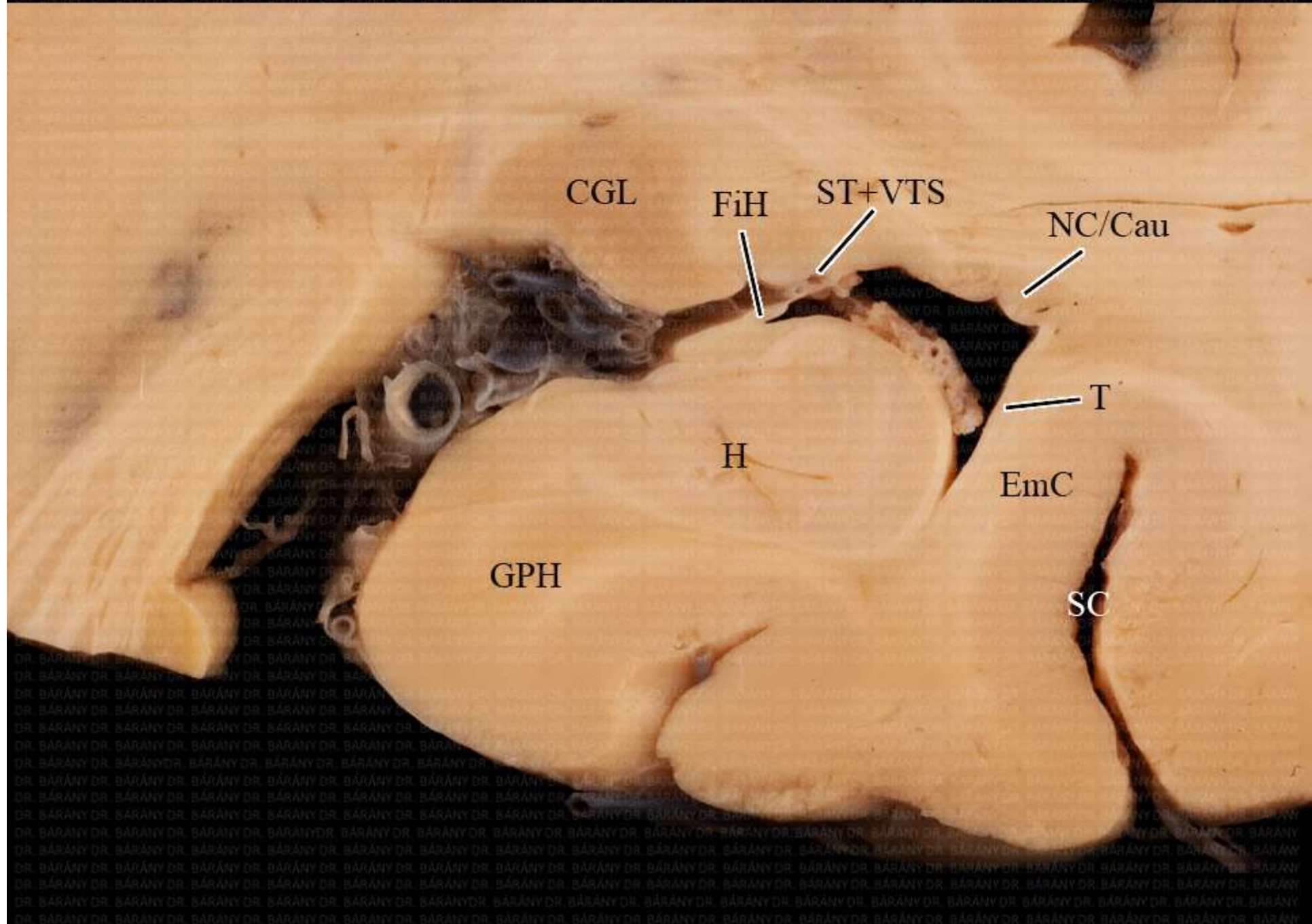
Pia mater

Lamina choroidea epithelialis

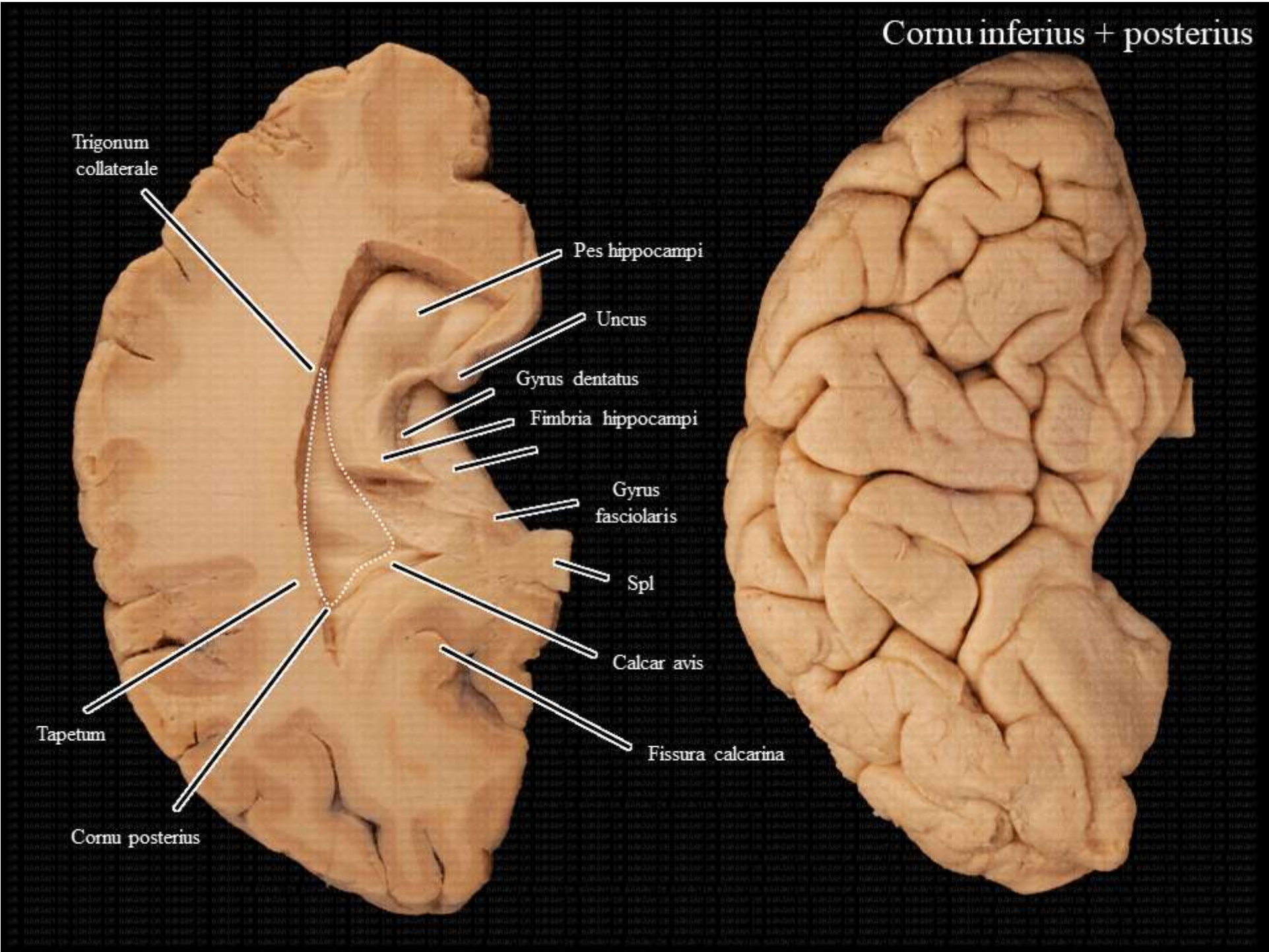


Tela choroidea

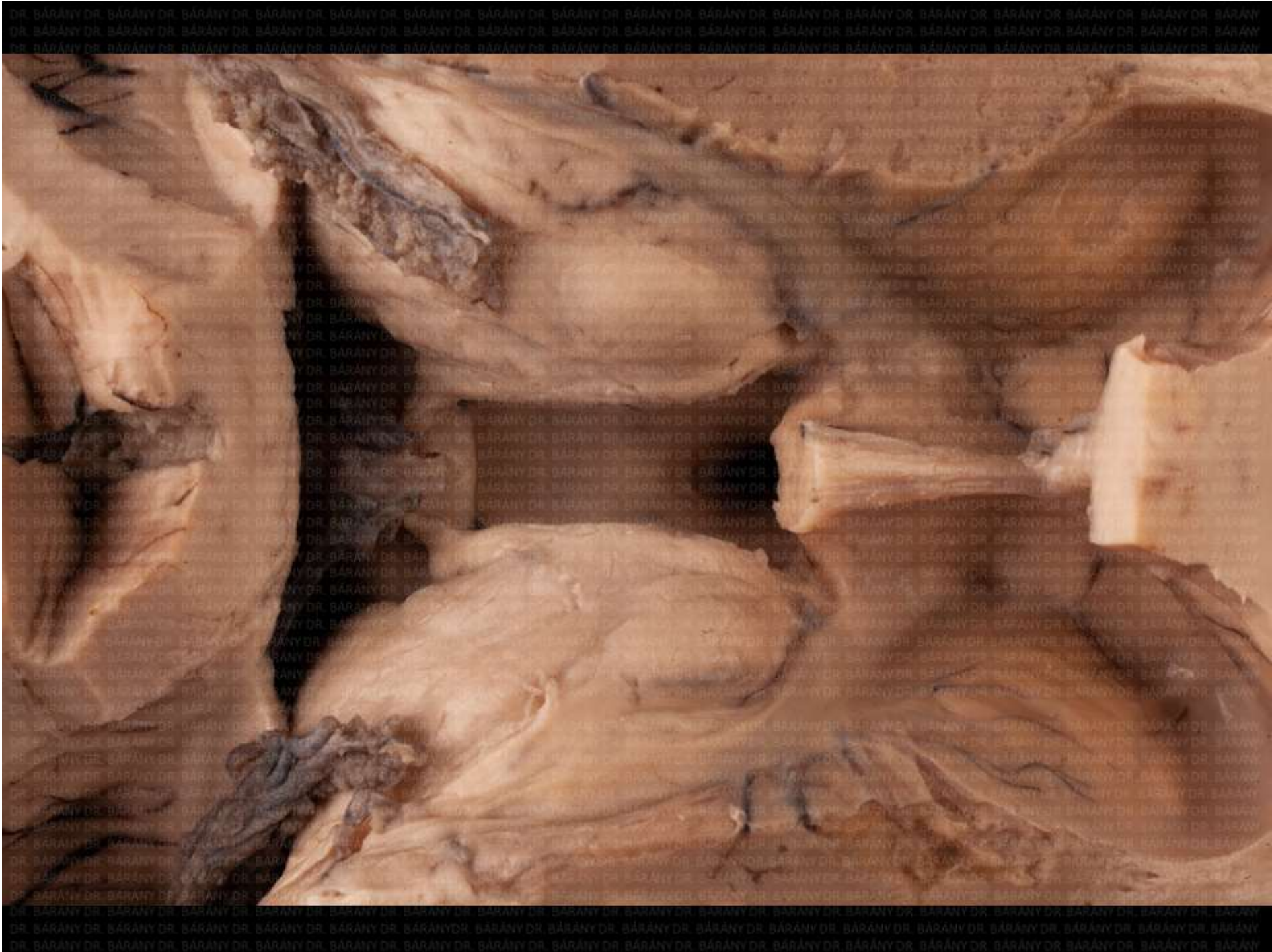
Cornu inferius



Cornu inferius + posterius







Diencephalon

Thalamus



Tuberculum anterius thalami
Adhaesio interthalamica

Hypothalamus

Subthalamus

Stria medullaris thalami
Habenula

Epithalamus



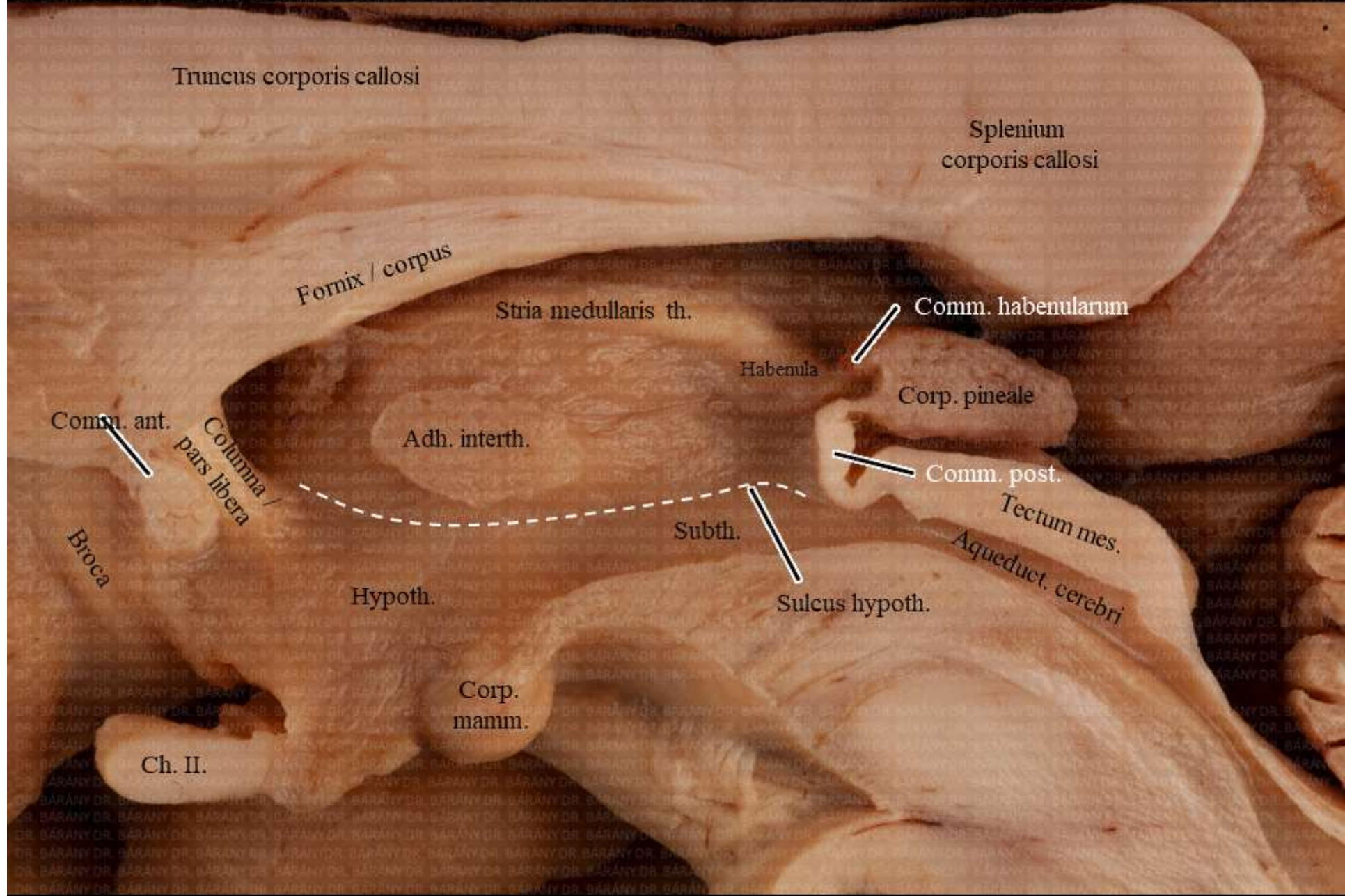
Trigonum habenulae
Commissura habenularum
Commissura posterior

Metathalamus



Corpus pineale
Corpus geniculatum laterale
Corpus geniculatum mediale

Ventriulus tertius

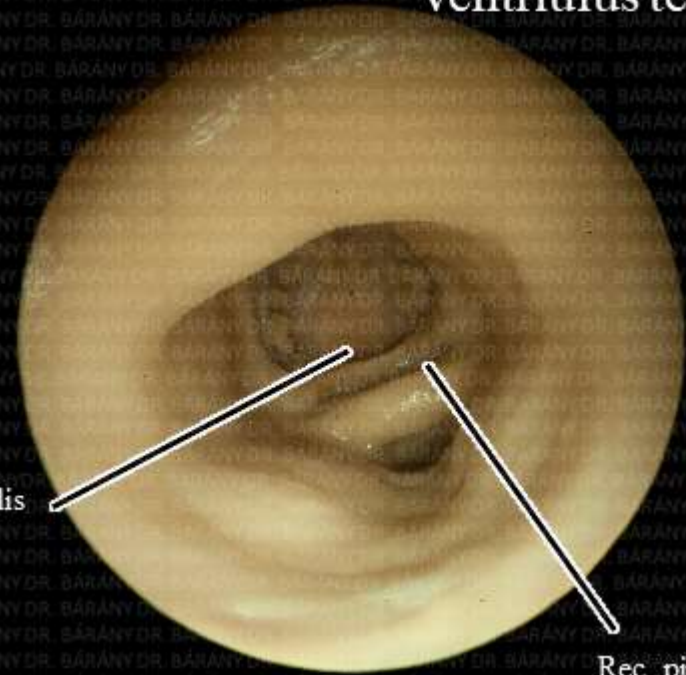


Ventriulus tertius

Rec. triangularis



Rec. suprapinealis



Rec. pinealis

Rec. opticus



Rec. infundibuli



