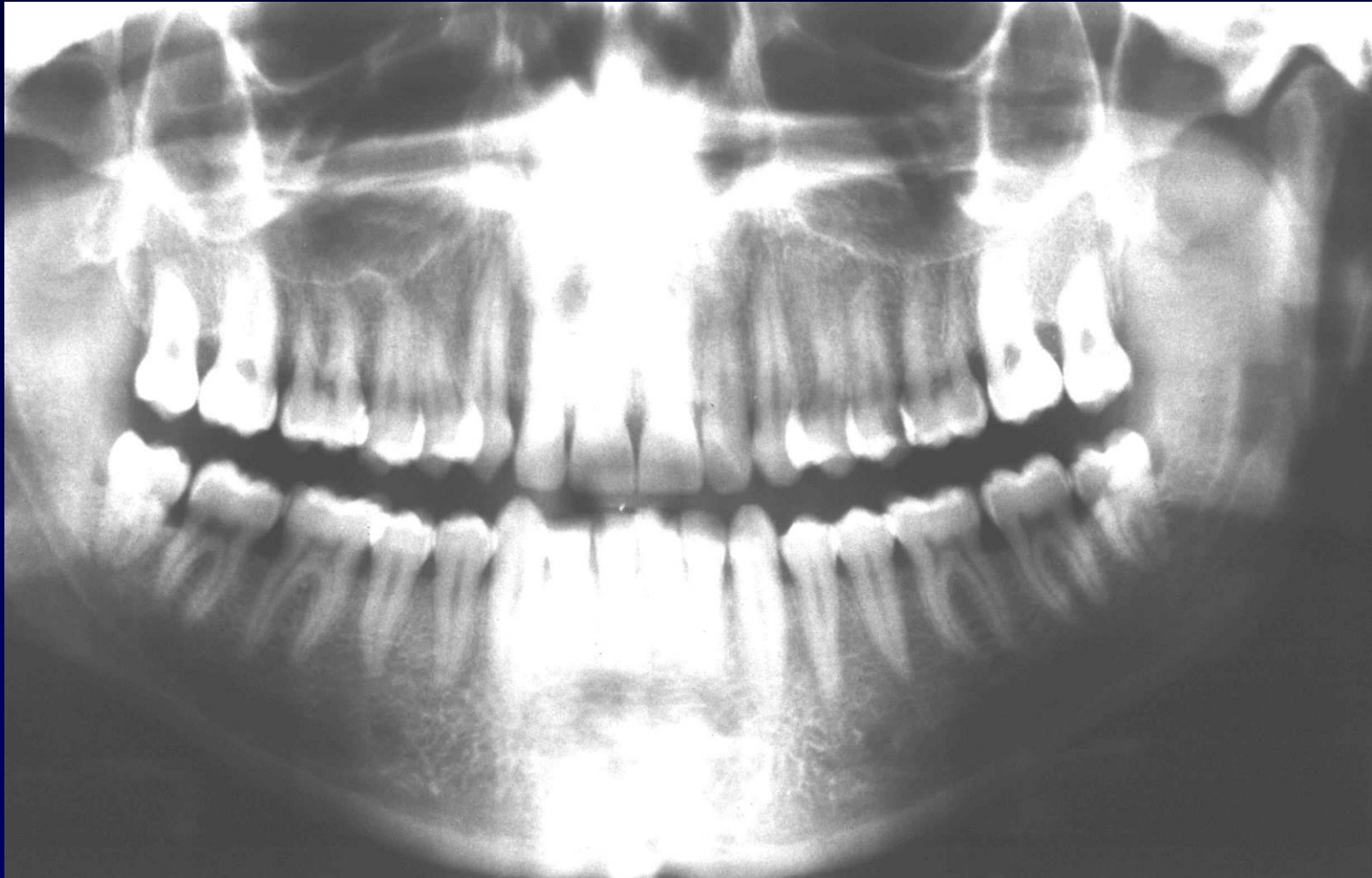


Anatomy of the teeth II.



PARTS

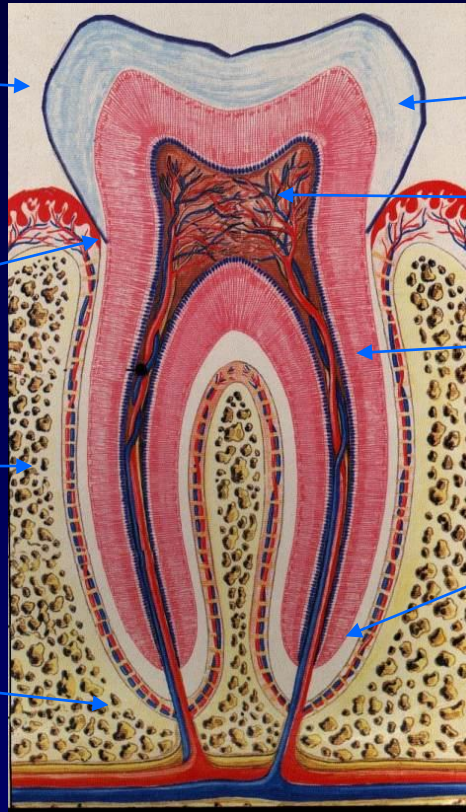


CROWN
(corona
dentis)

NECK
(collum
dentis)

ROOT
(radix
dentis)

**apex radice
dentis**



ENAMEL
(enamelum)

PULP CAVITY
(cavum dentis)

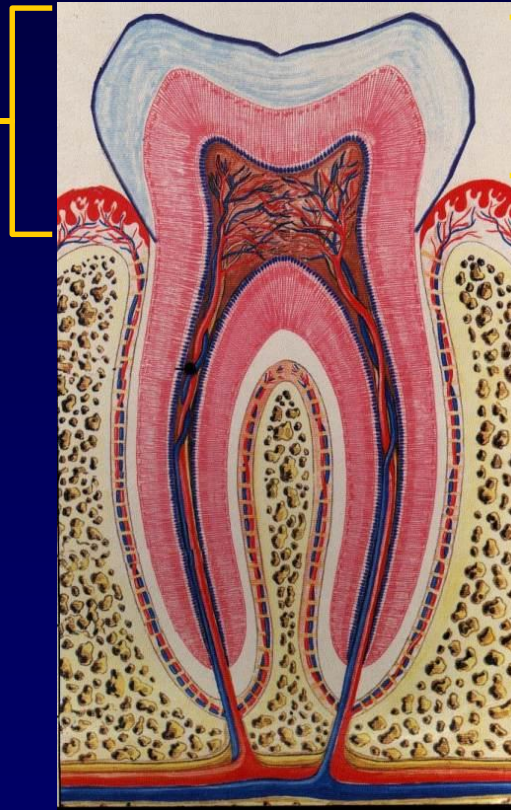
DENTIN
(dentinum)

CEMENTUM



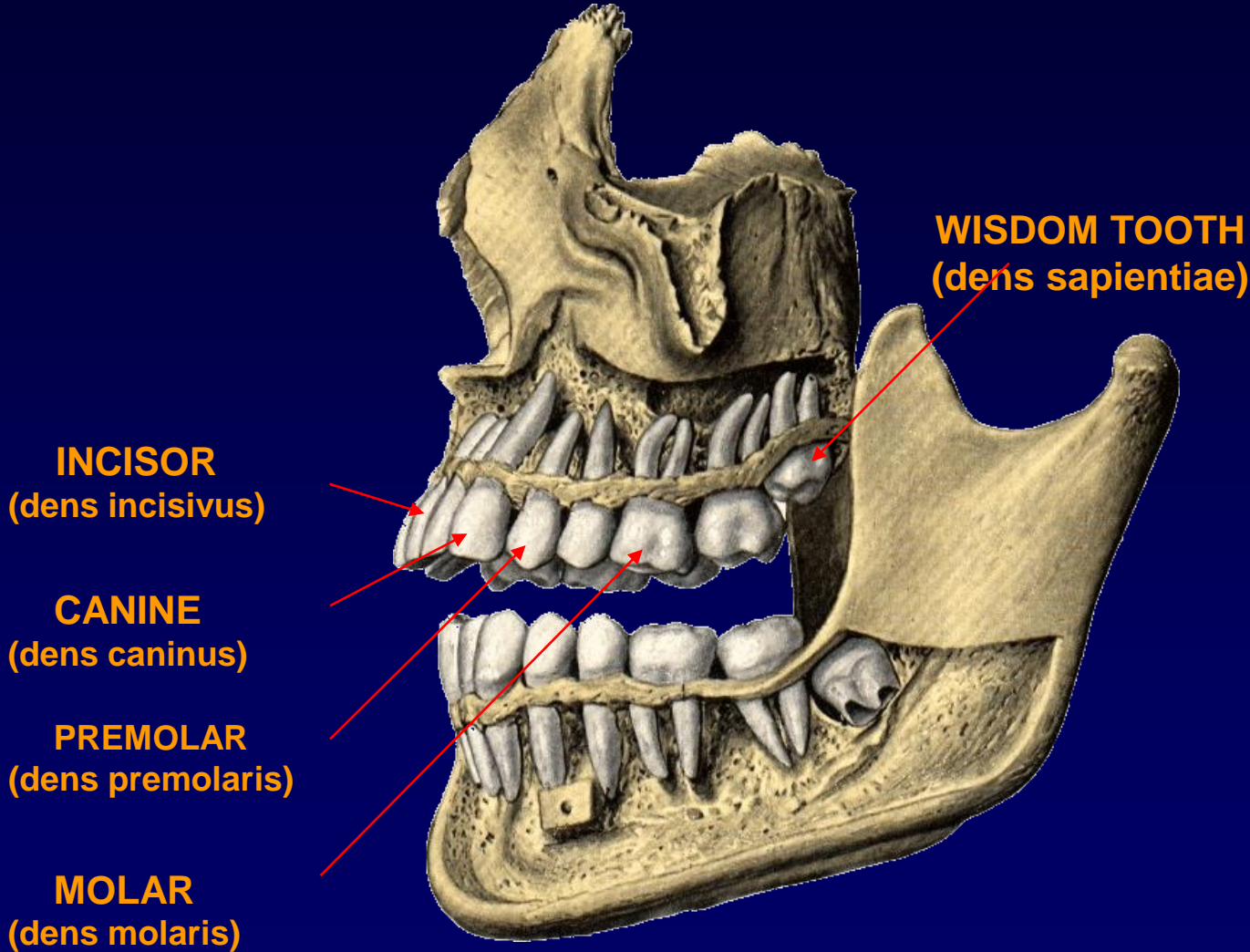
PARTS

Anatomical crown

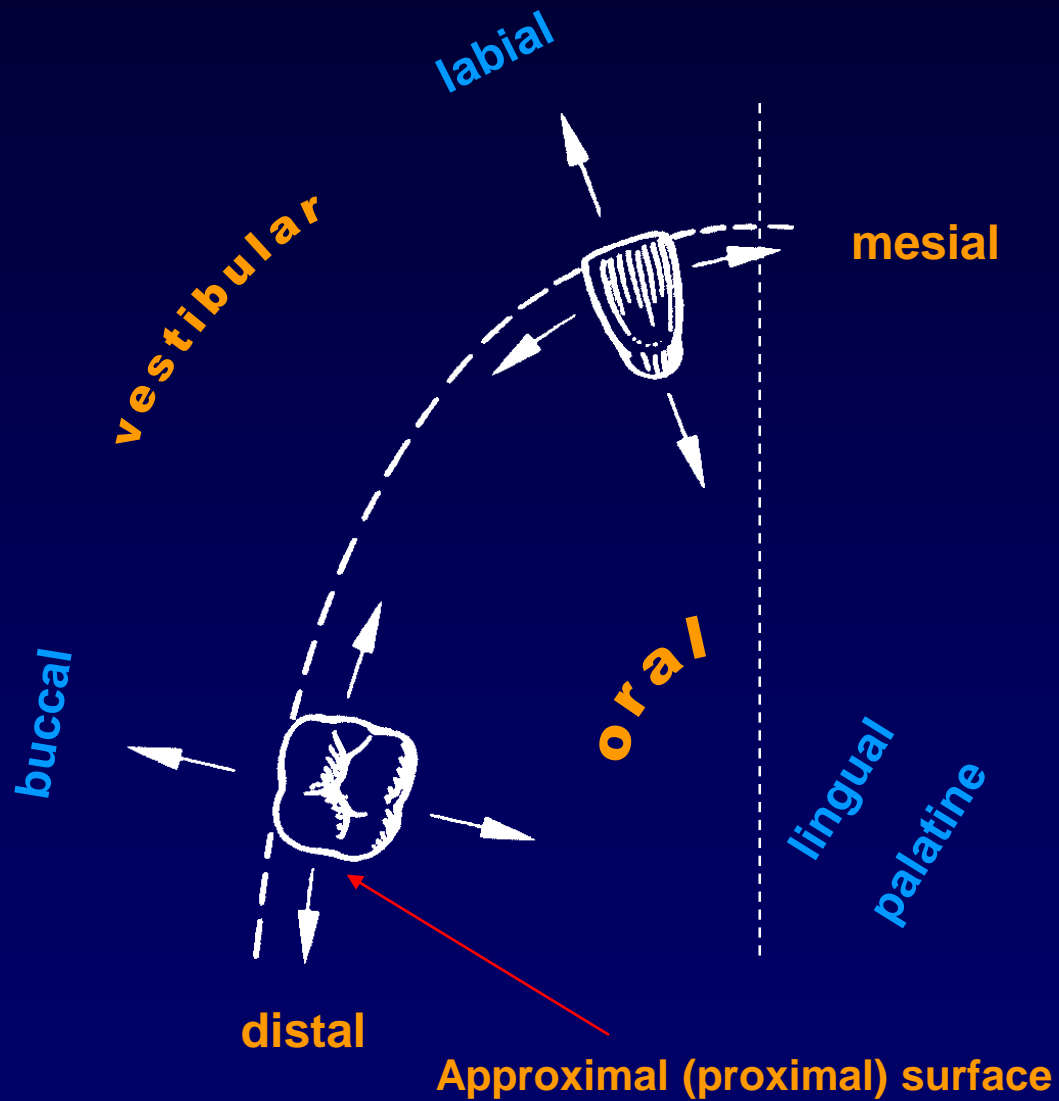


Clinical crown

Tooth types



ORIENTATIONAL TOOTH TERMS



MARKING of TEETH

International Standards



Palmer Notation Method

4

Universal Tooth Designation System (USA): 1-32 (right upper third molar 1 – right lower third molar 32)

MARKING of TEETH (primary teeth)

International Standards

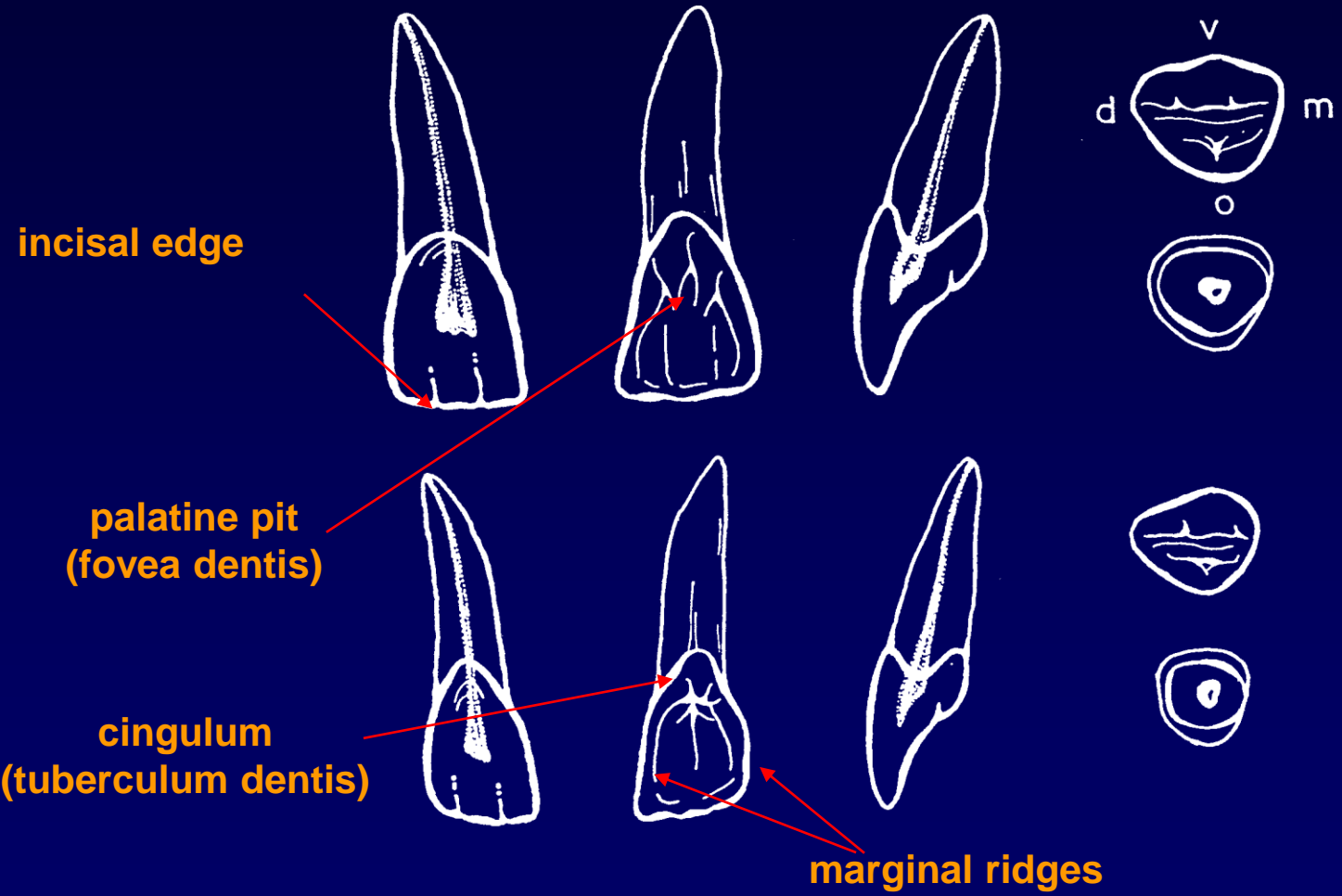
55	54	53	52	51	61	62	63	64	65
85	84	83	82	81	71	72	73	74	75

Palmer Notation Method

E	D	C	B	A	A	B	C	D	E
E	D	C	B	A	A	B	C	D	E



UPPER INCISORS (DENTES INCISIVI SUPERIORES)



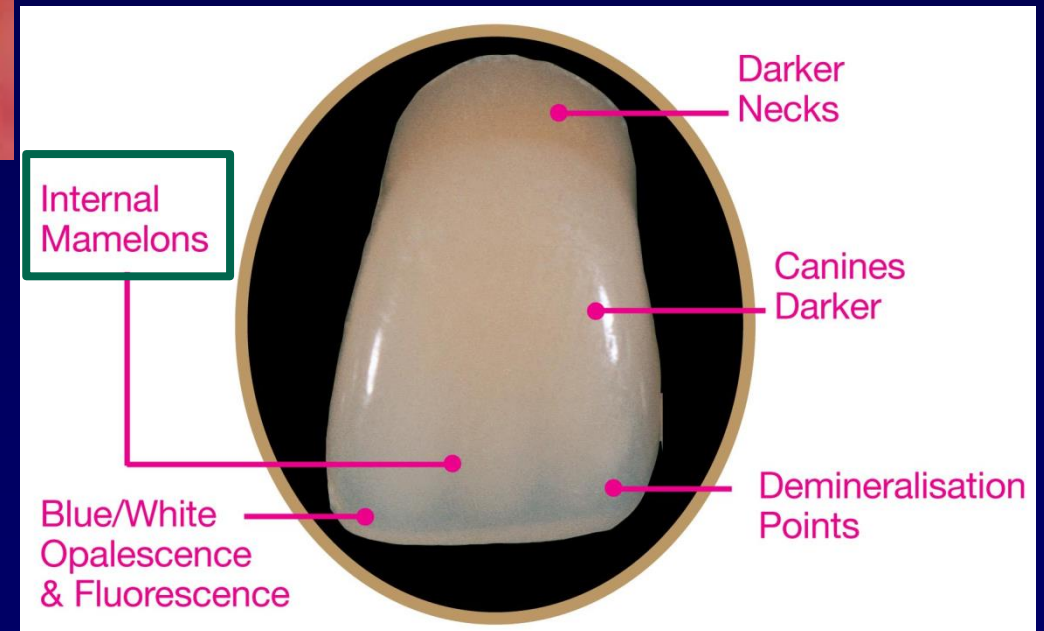
Length (mm): 23,7
22,1

Number of roots: 1

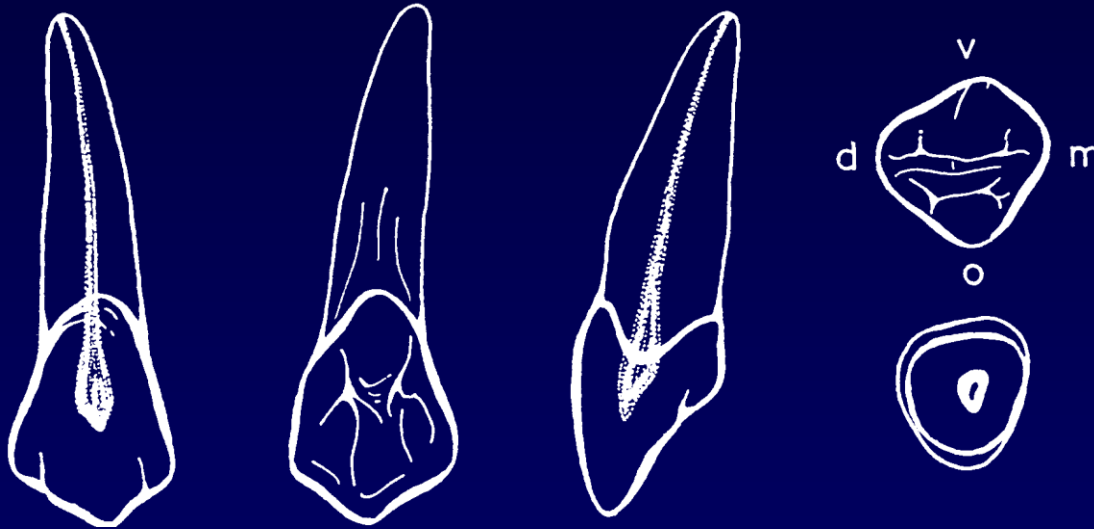
Number of Root canals: 1

Mamelons (tubercles)

(in clinical dentistry color shades)



DENS CANINUS SUPERIOR

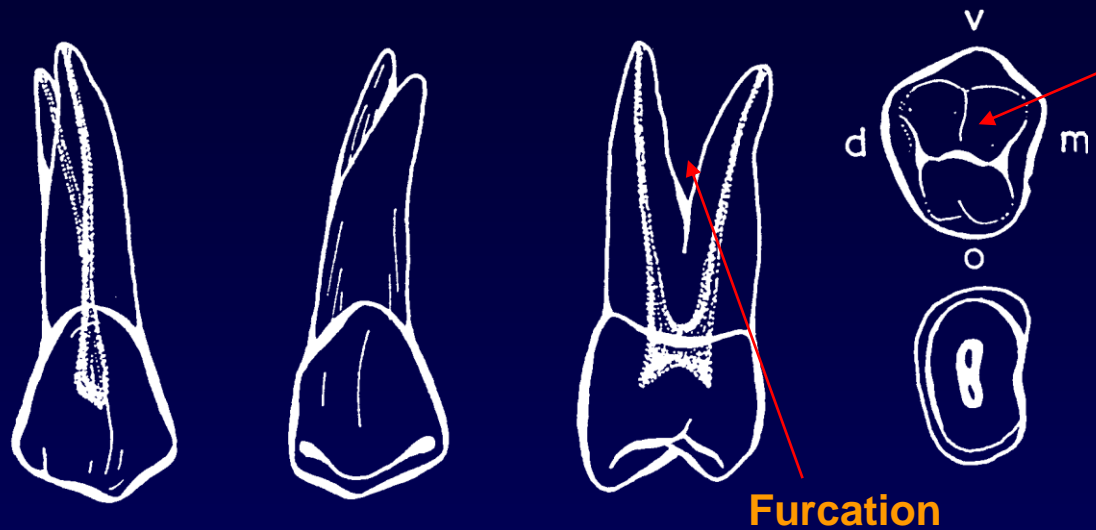


Length (mm): 27,3

**Number of
roots: 1**

**Number of
Root canals: 1**

DENTES PREMOLARES SUPERIORES

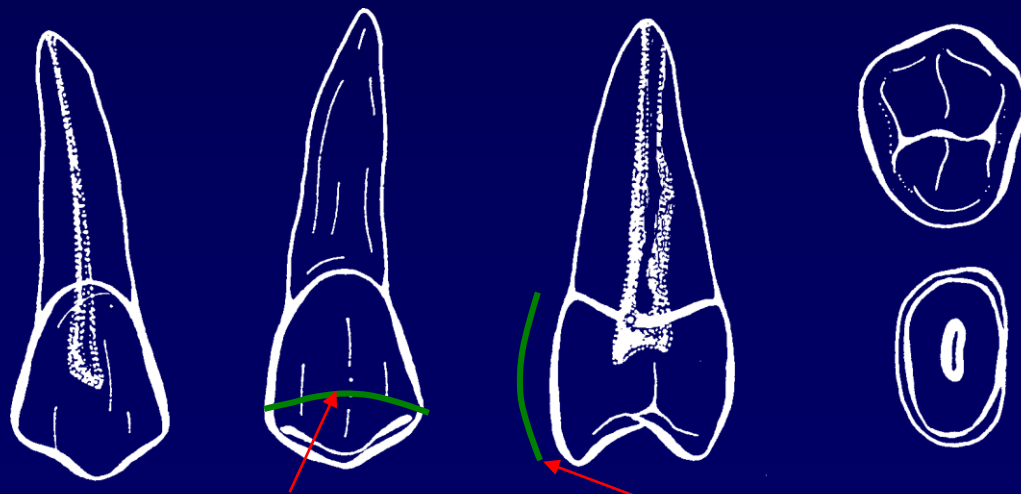


facies oclusalis

Length (mm): 22,3

Number of roots: 2

Number of Root canals: 2 (90%)



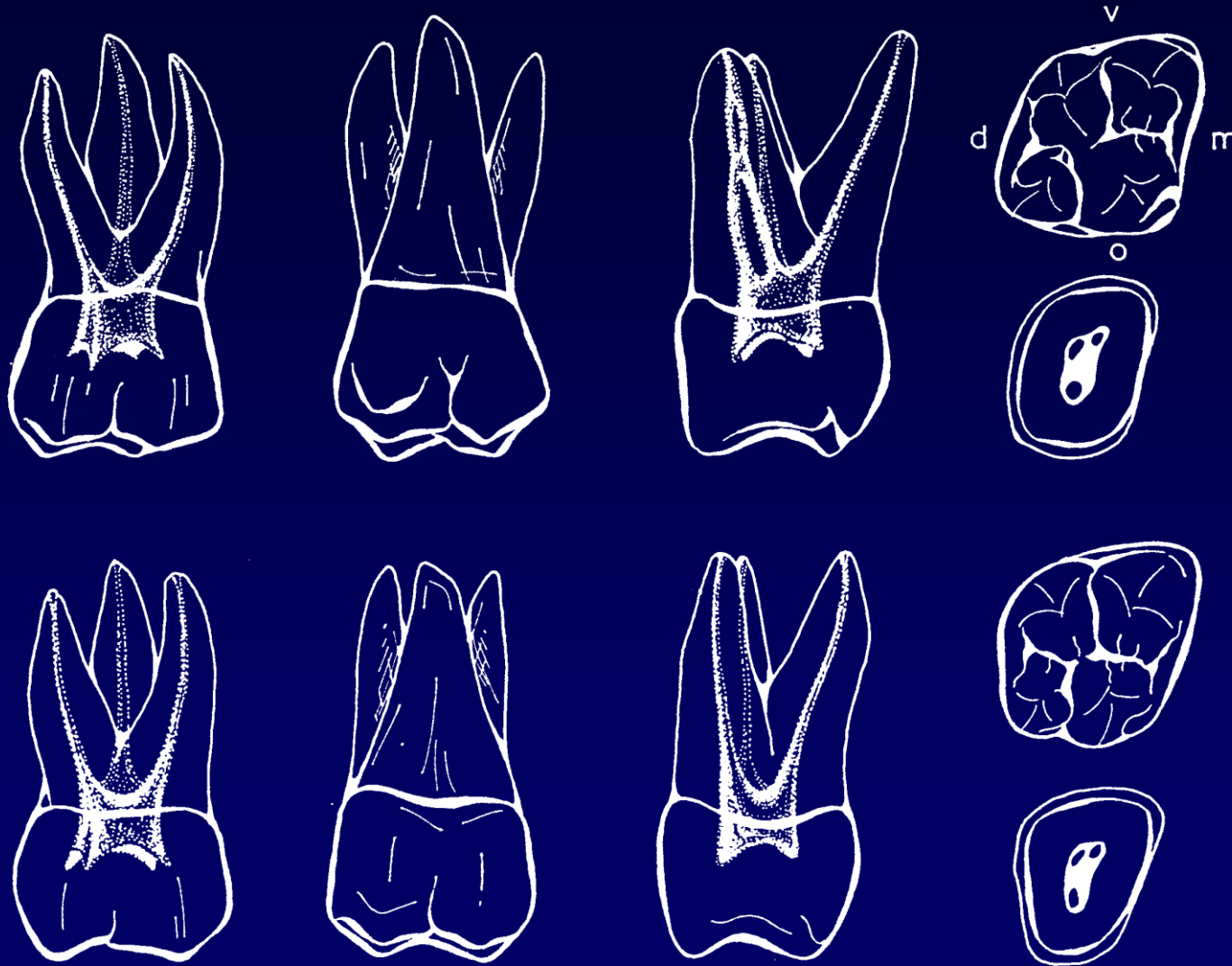
mesio-distal curve

gingivo-occlusal curve

Number of roots: 1-2

Number of Root canals: 2 (58%)

DENTES MOLARES SUPERIORES

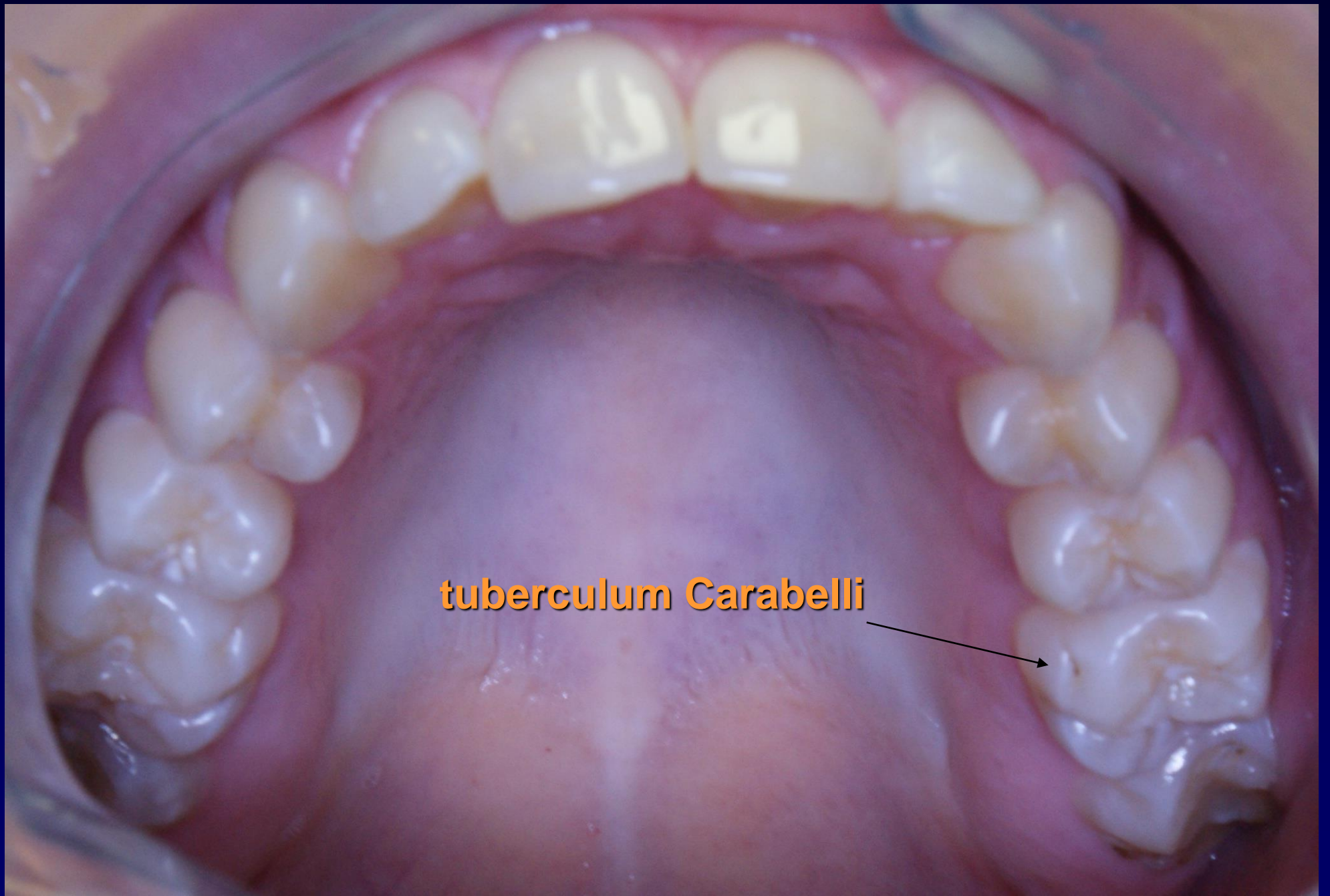


Length (mm): 22,3
22,2

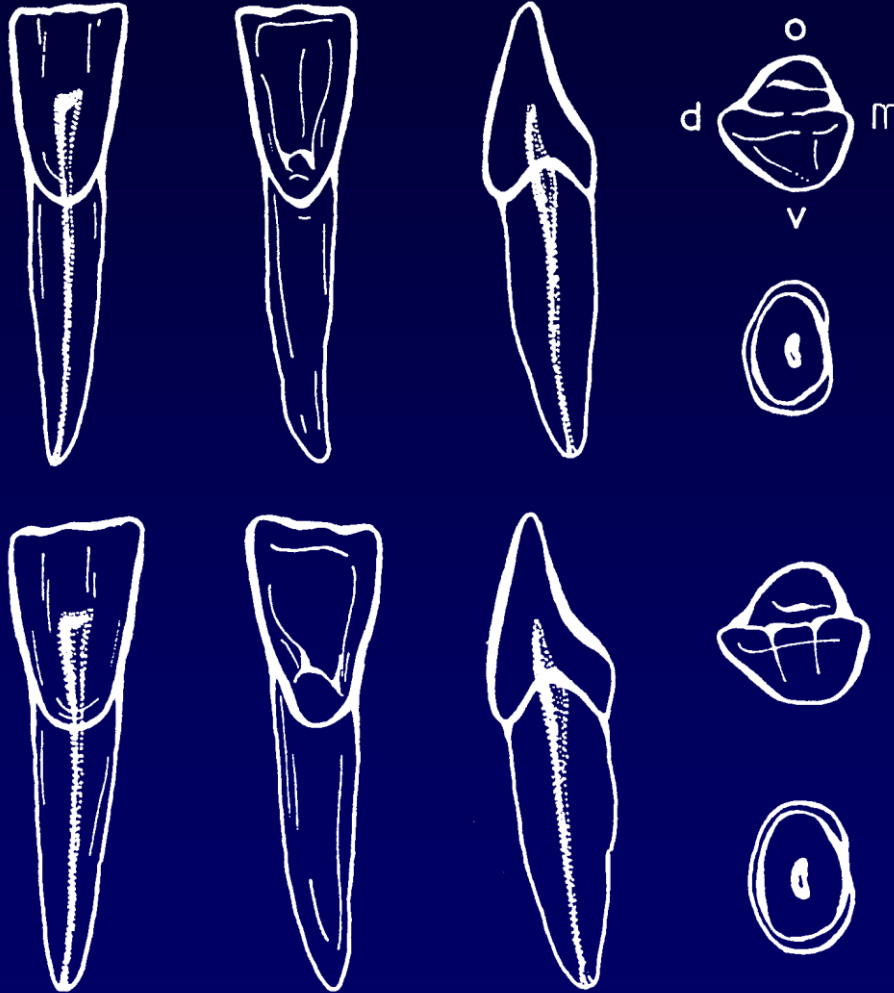
Number of
roots: 3

Number of
Root canals: 3-4
(mesiobuccal may have
2 canals)

tuberculum Carabelli



DENTES INCISIVI INFERIORES

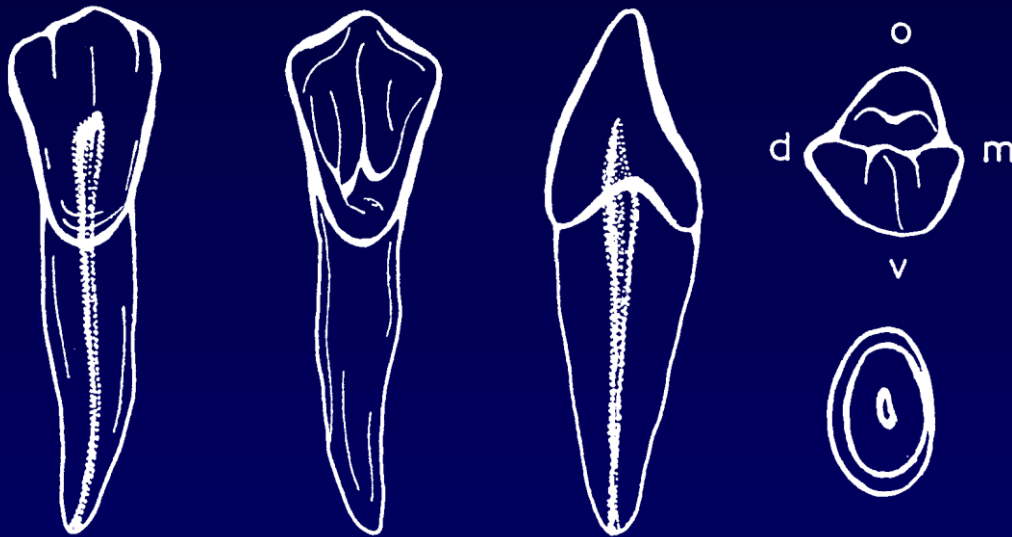


Length (mm): 21,8
23,3

Number of
roots: 1

Number of
Root canals: 1

DENS CANINUS INFERIOR

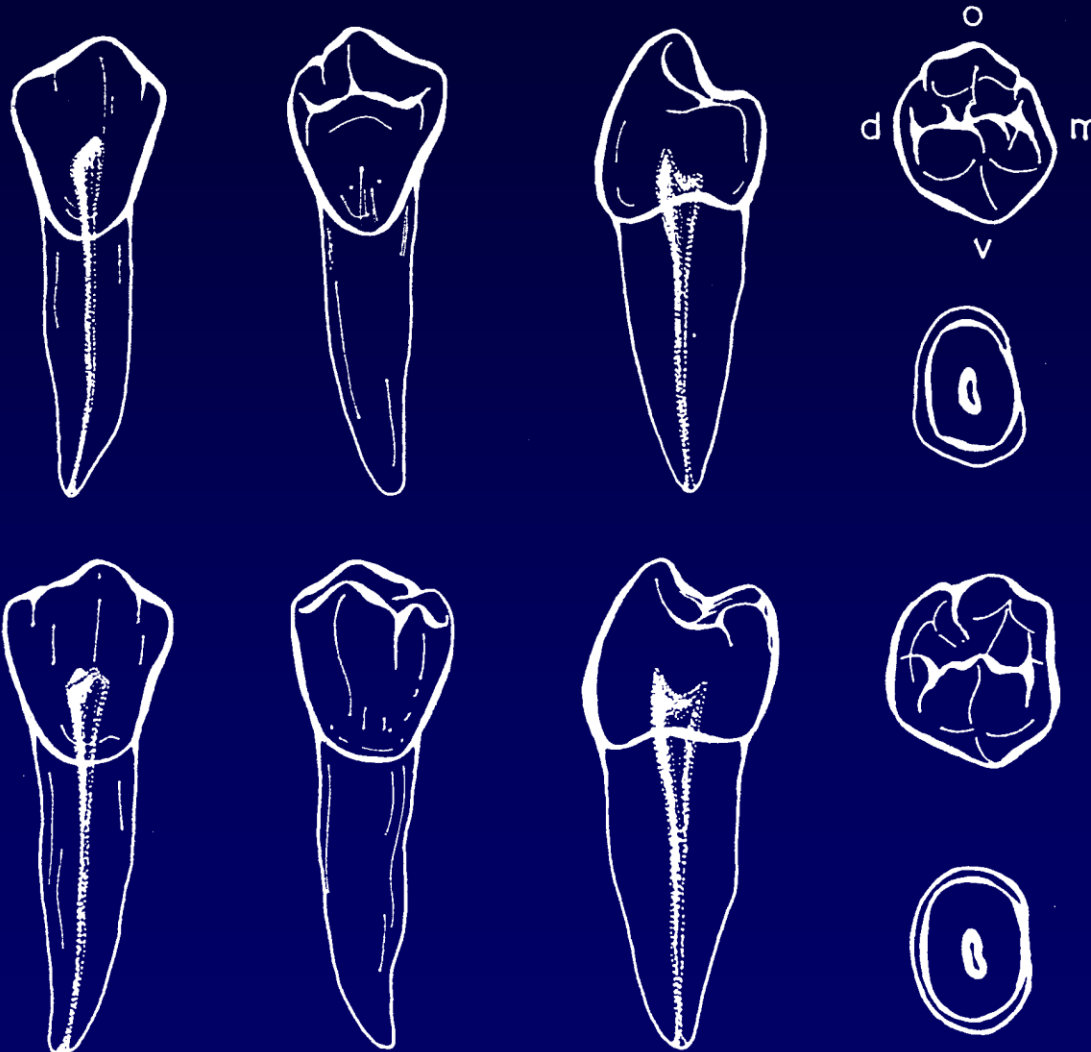


Length (mm): 26,0

**Number of
roots: 1**

**Number of
Root canals: 1**

DENTES PREMOLARES INFERIORES

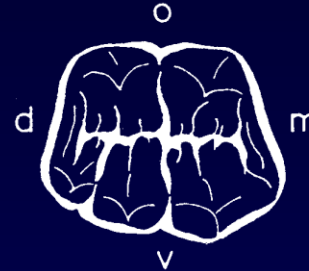


Length (mm): 22,9
22,3

Number of
roots: 1

Number of
Root canals: 1

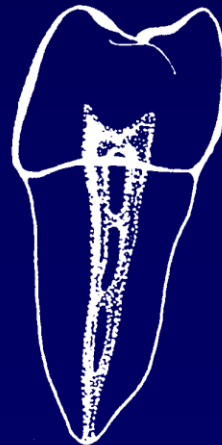
DENTES MOLARES INFERIORES



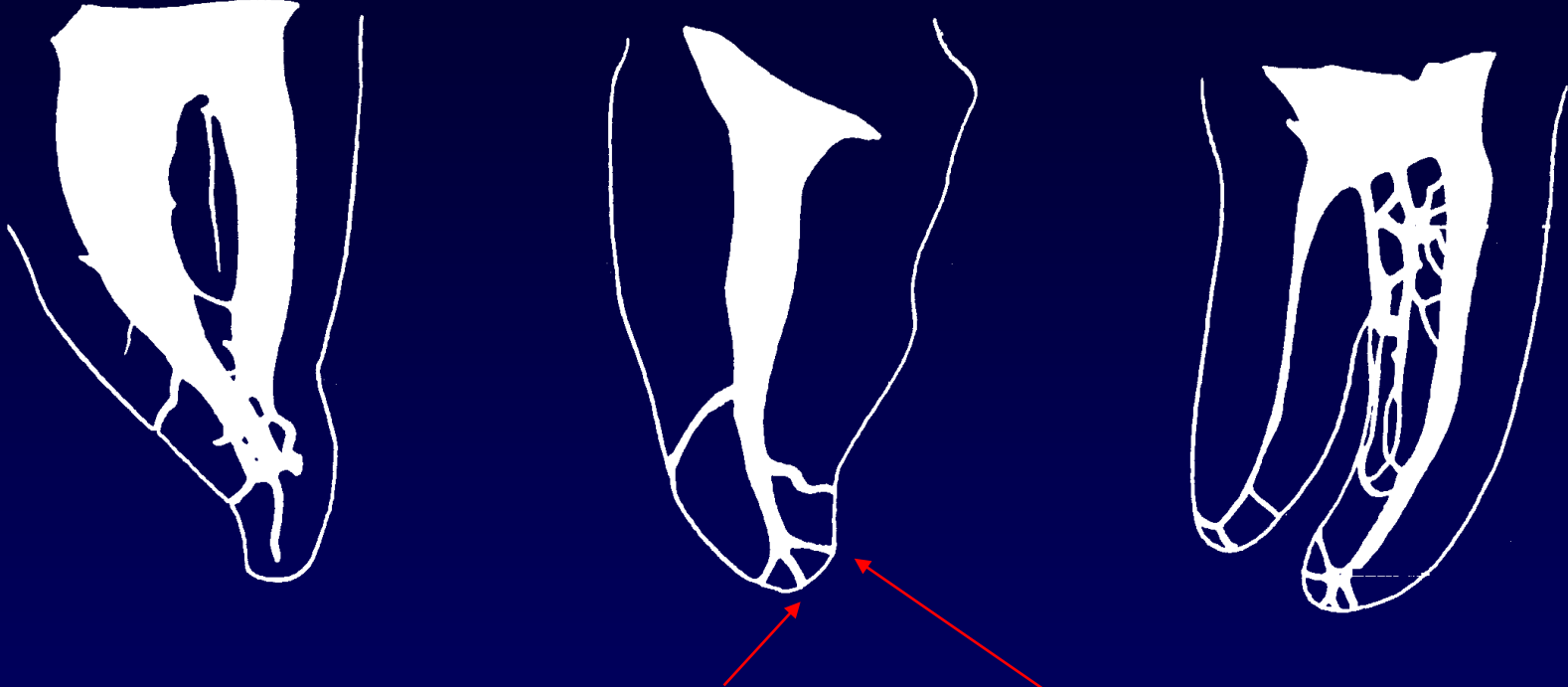
Length (mm): 22,0
21,7

Number of
roots: 2

Number of
Root canals: 3-4

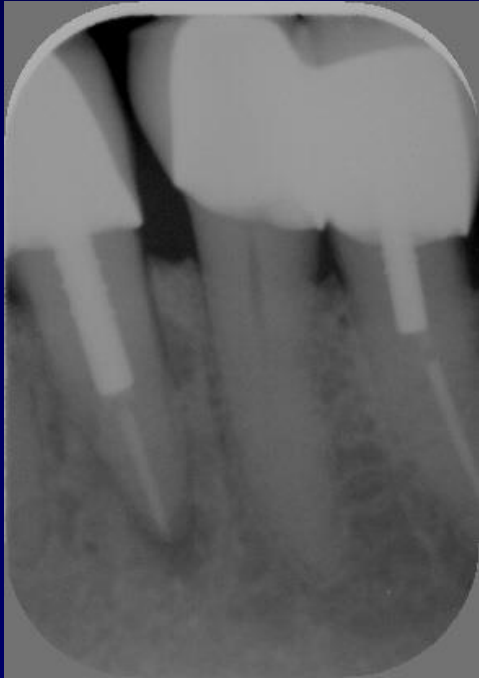


Variation of root canals



apical foramen

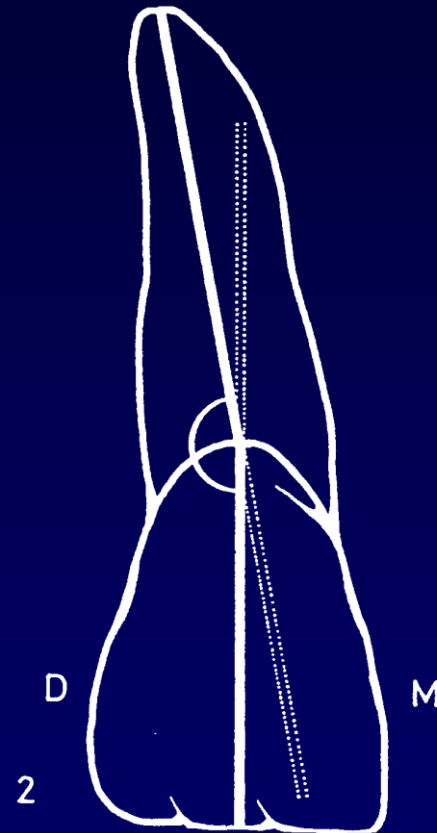
accessory canals



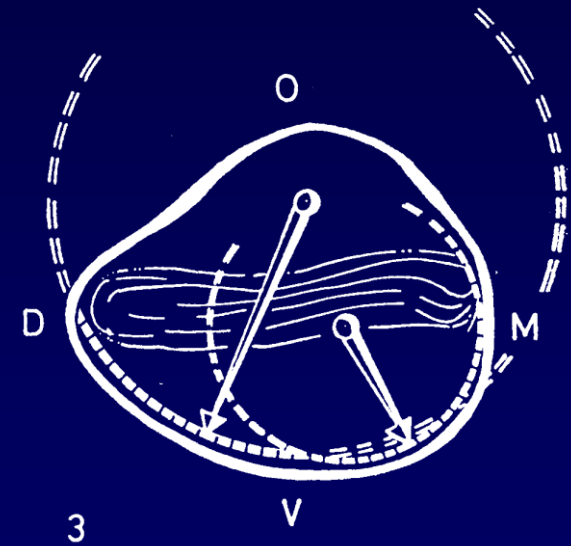
Mühlreiter's symbols



Angular

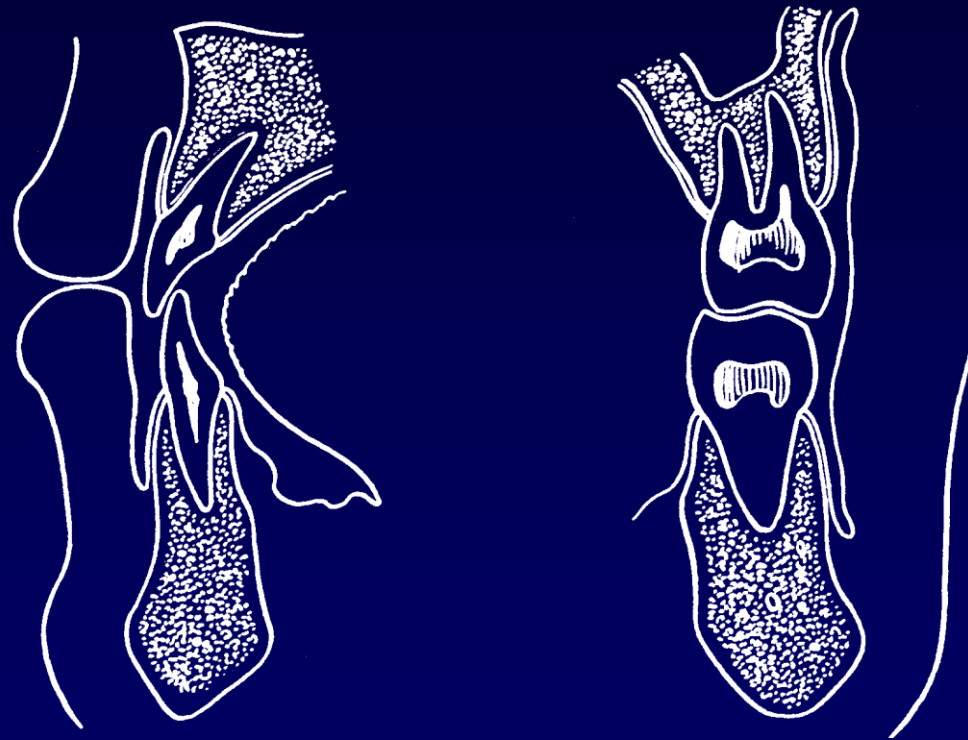


Root

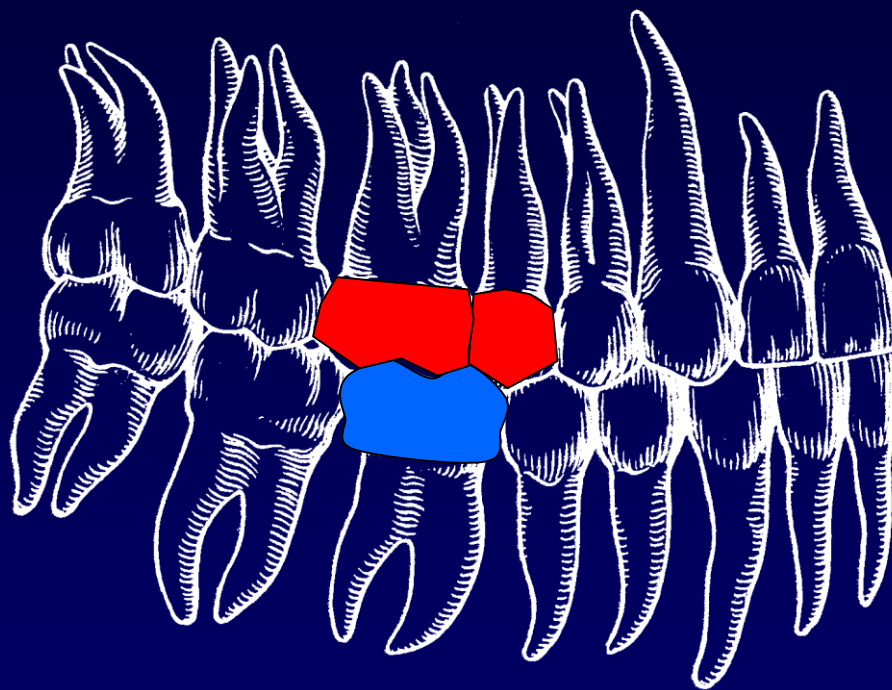


Circumferential

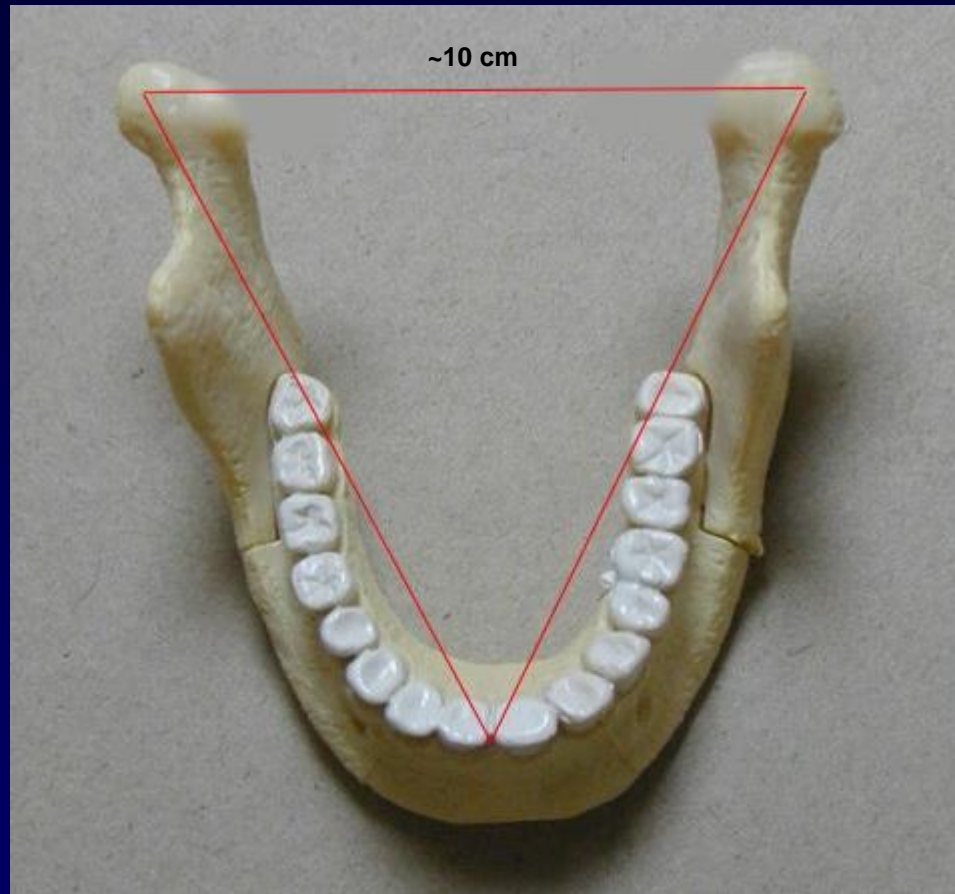
OCCLUSION



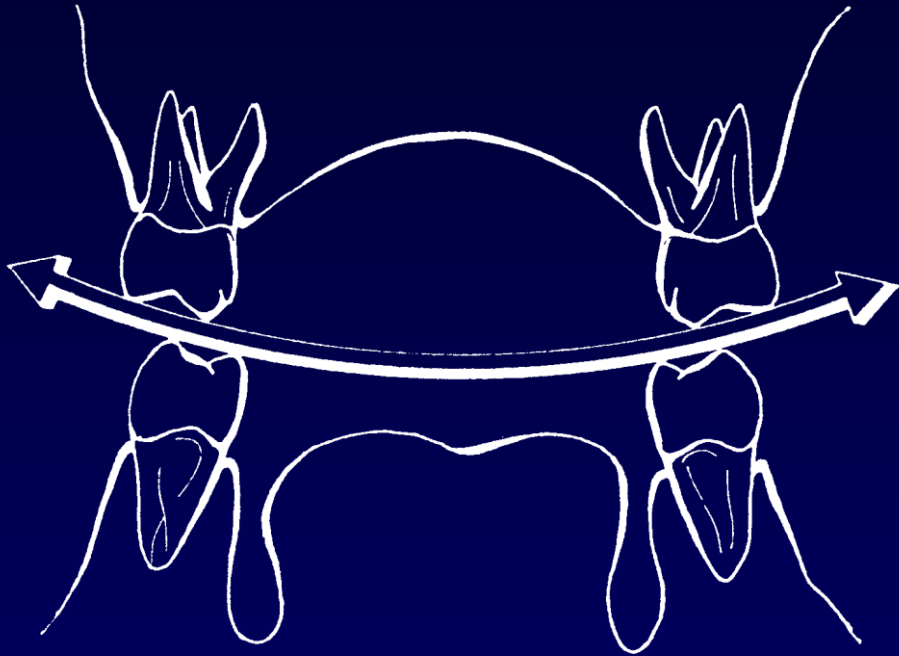
OCCLUSAL UNIT



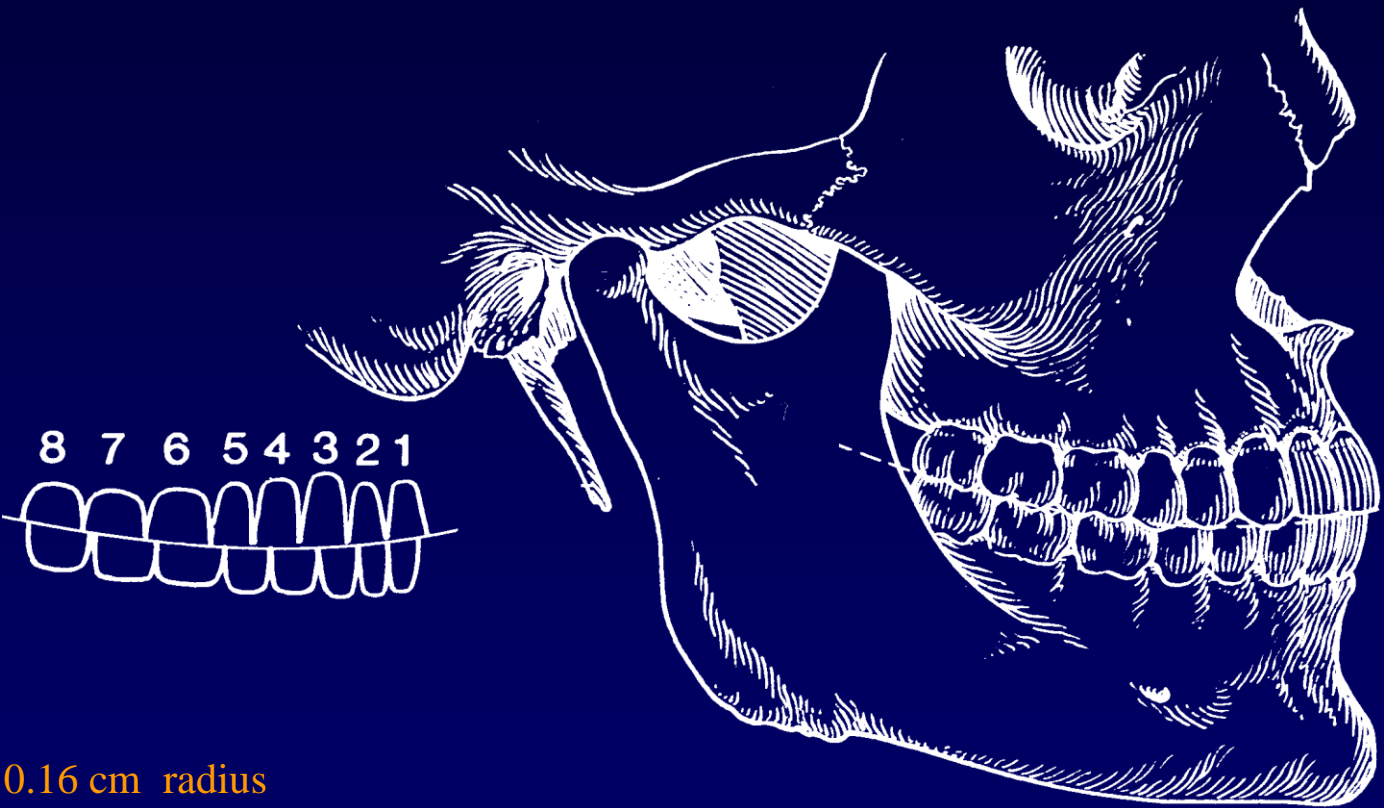
Bonwill's triangle (equilateral triangle)



WILSON - Curve



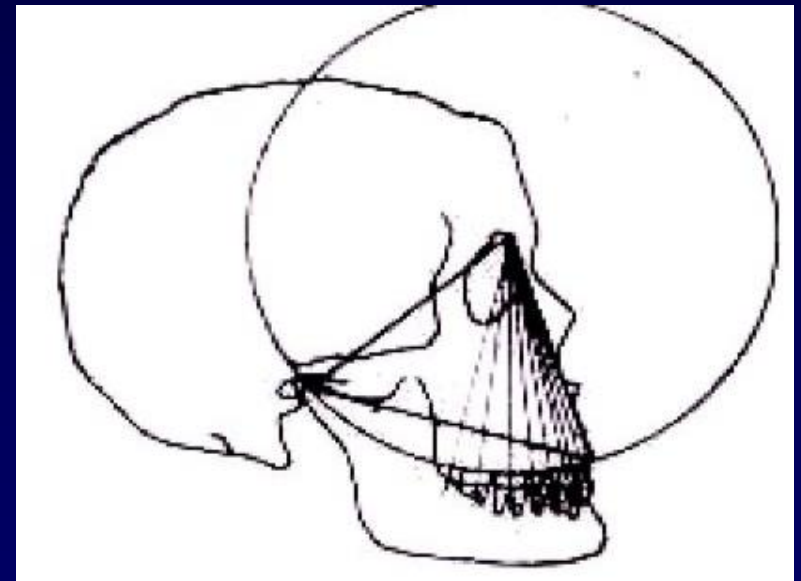
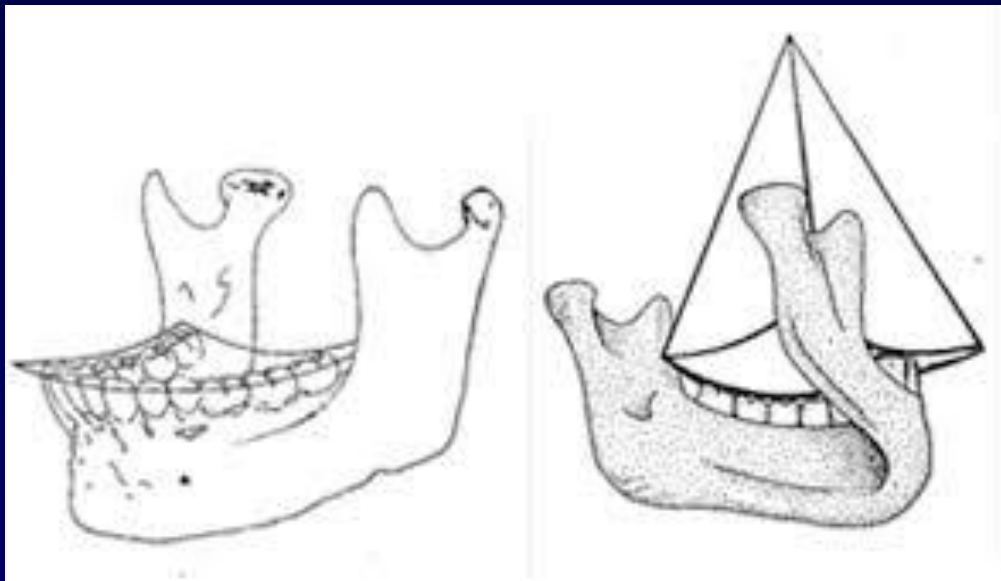
SPEE - CURVE



10.16 cm radius

MONSON – CURVE (Wilson + Spee) curve of occlusion

centre in the region of the glabella

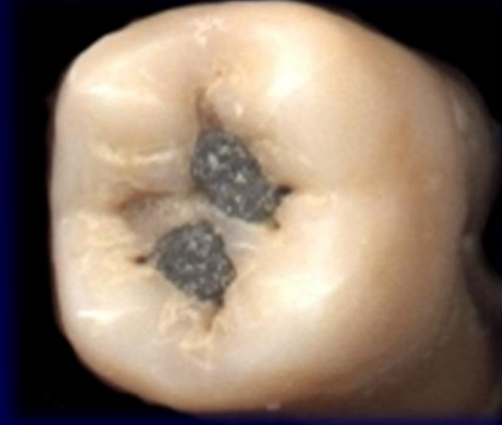


OCCLUSAL SURFACE

46



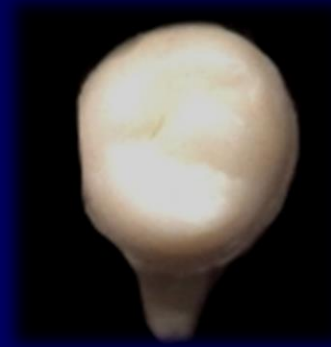
47



28



28



VARIATIONS



shades of teeth



CARIES



