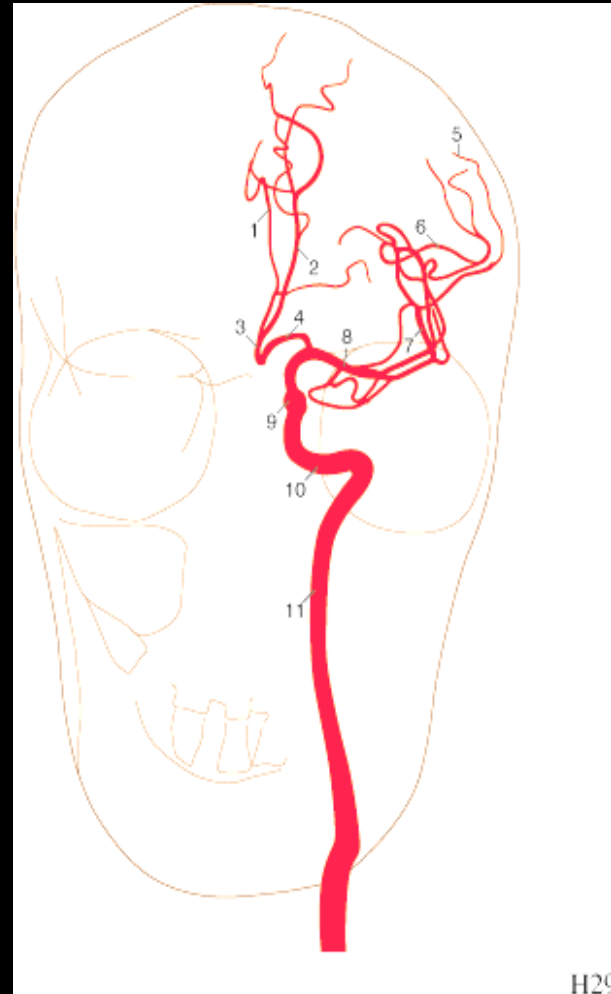


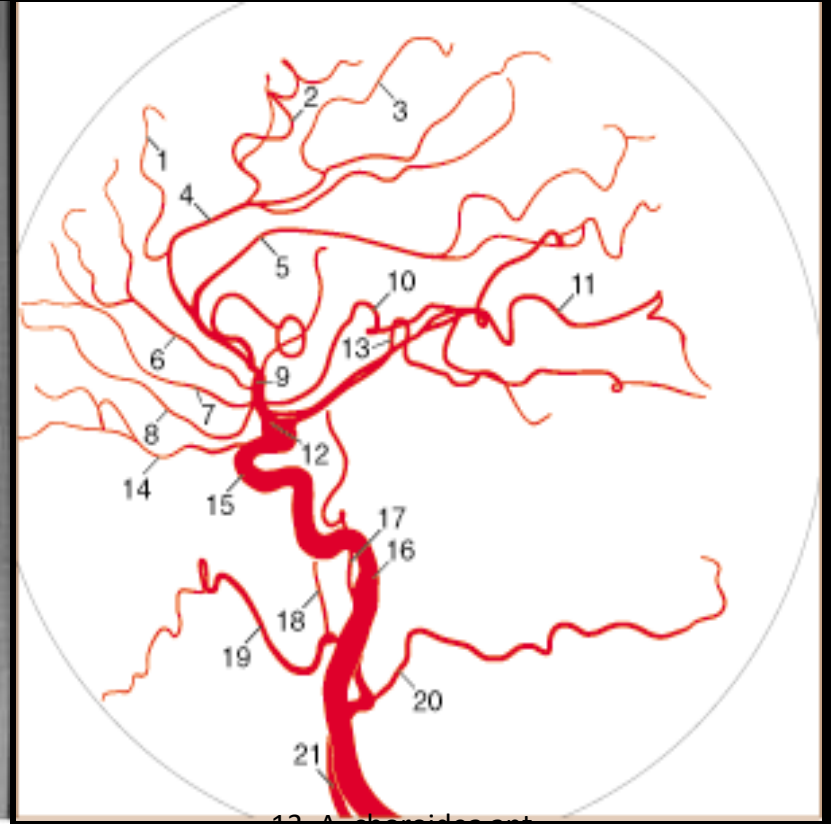
Deep regions of the neck

János Barna

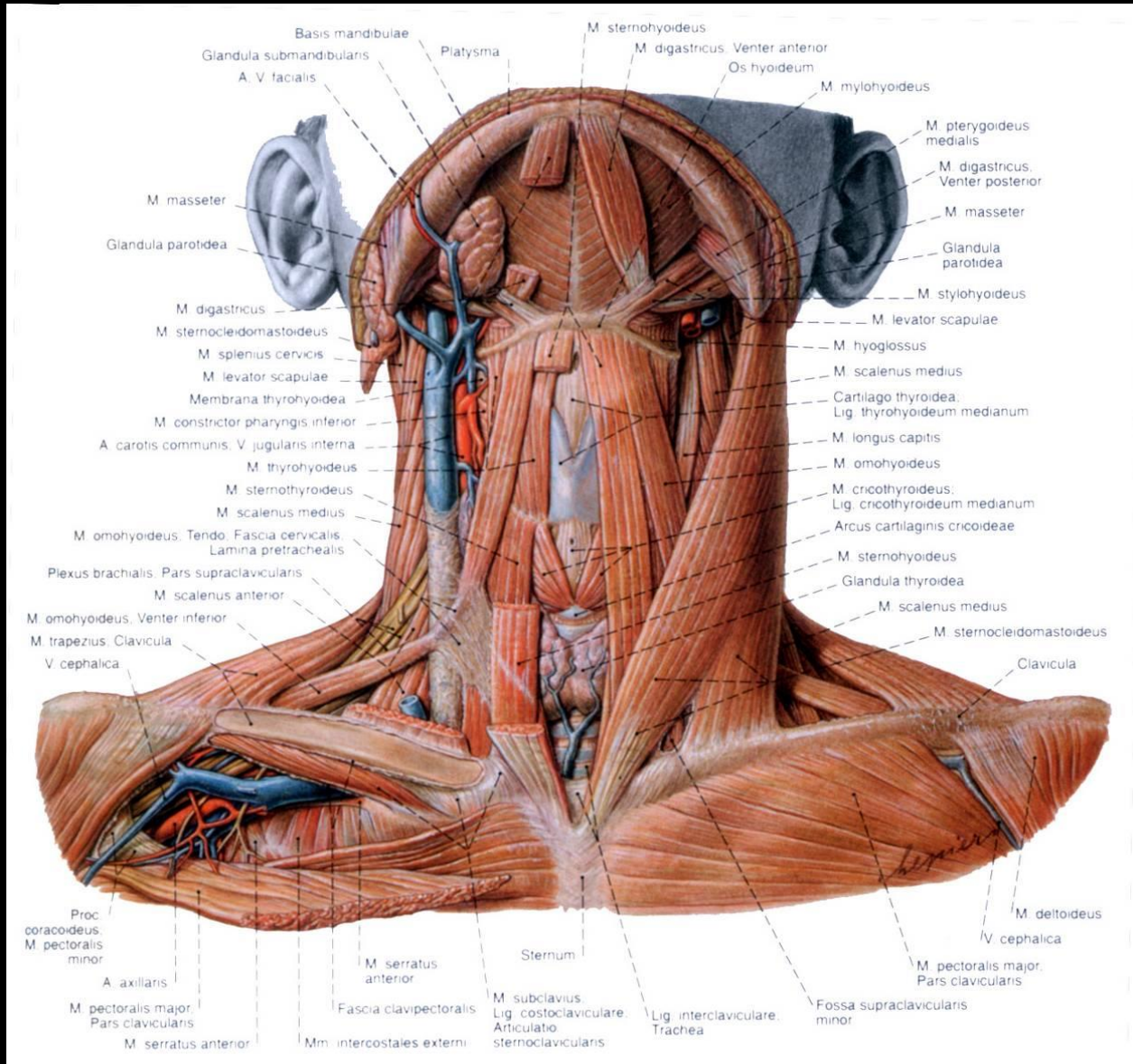
Internal carotid artery

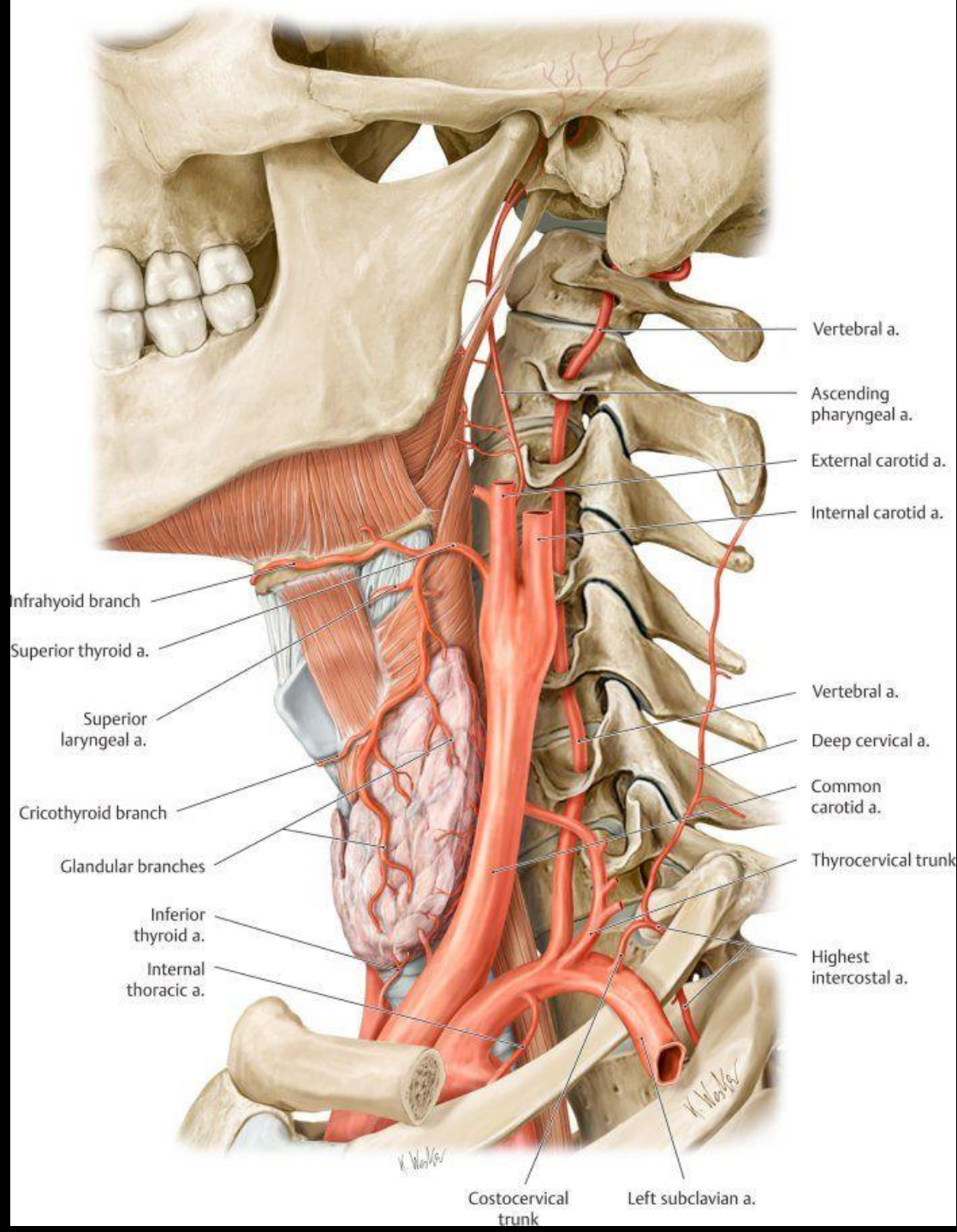


Internal carotid artery

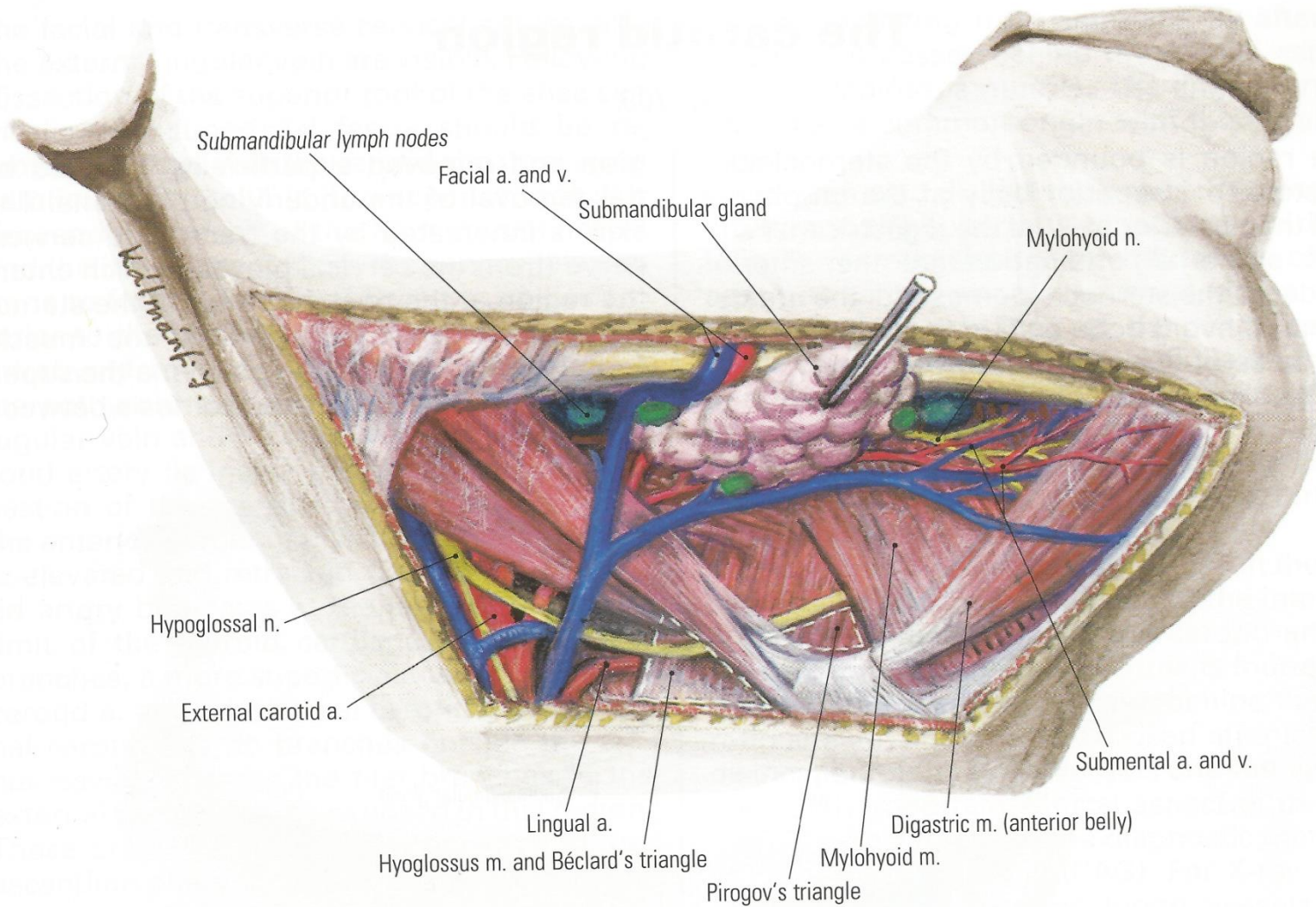


Anterior region of the neck

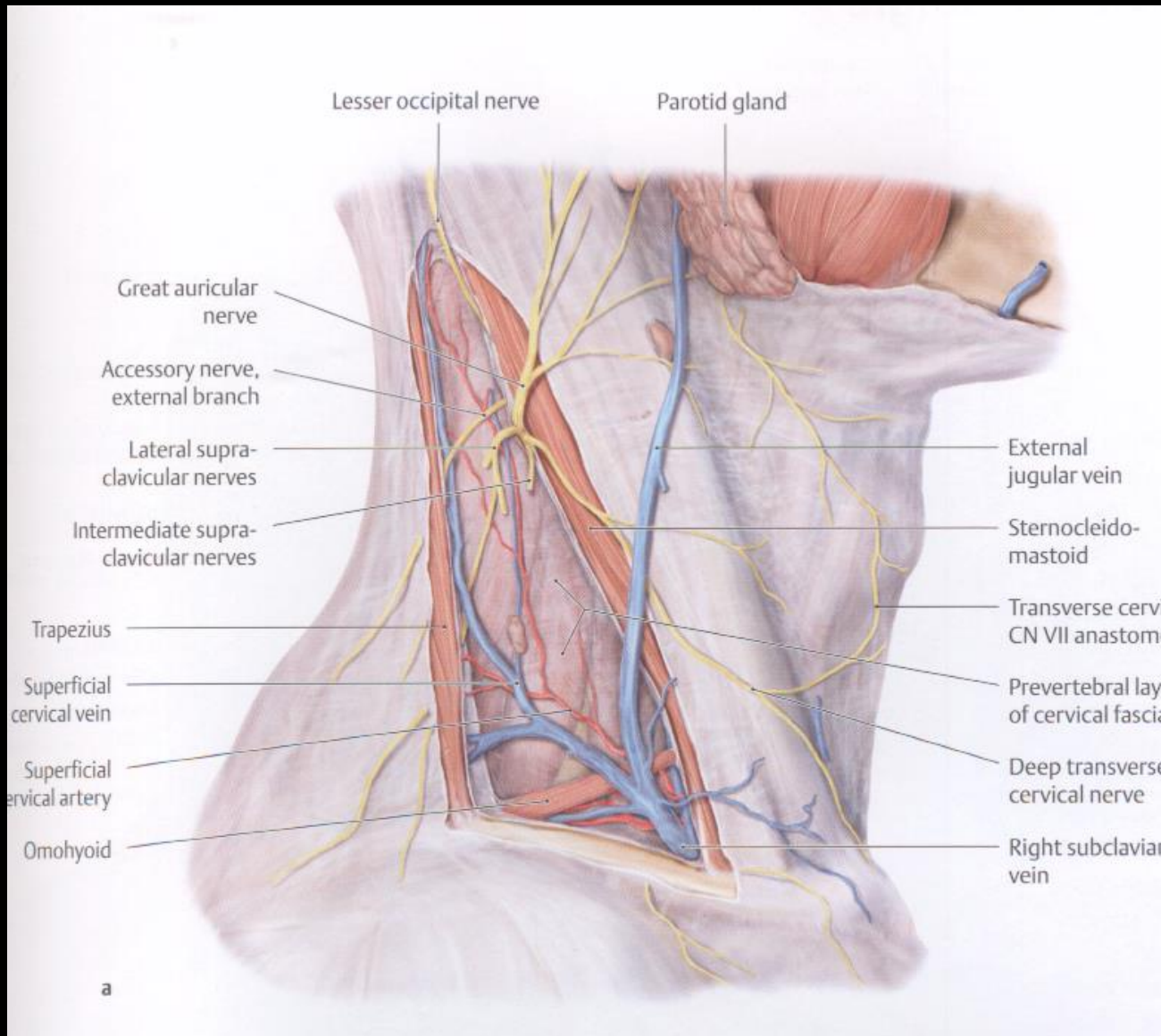




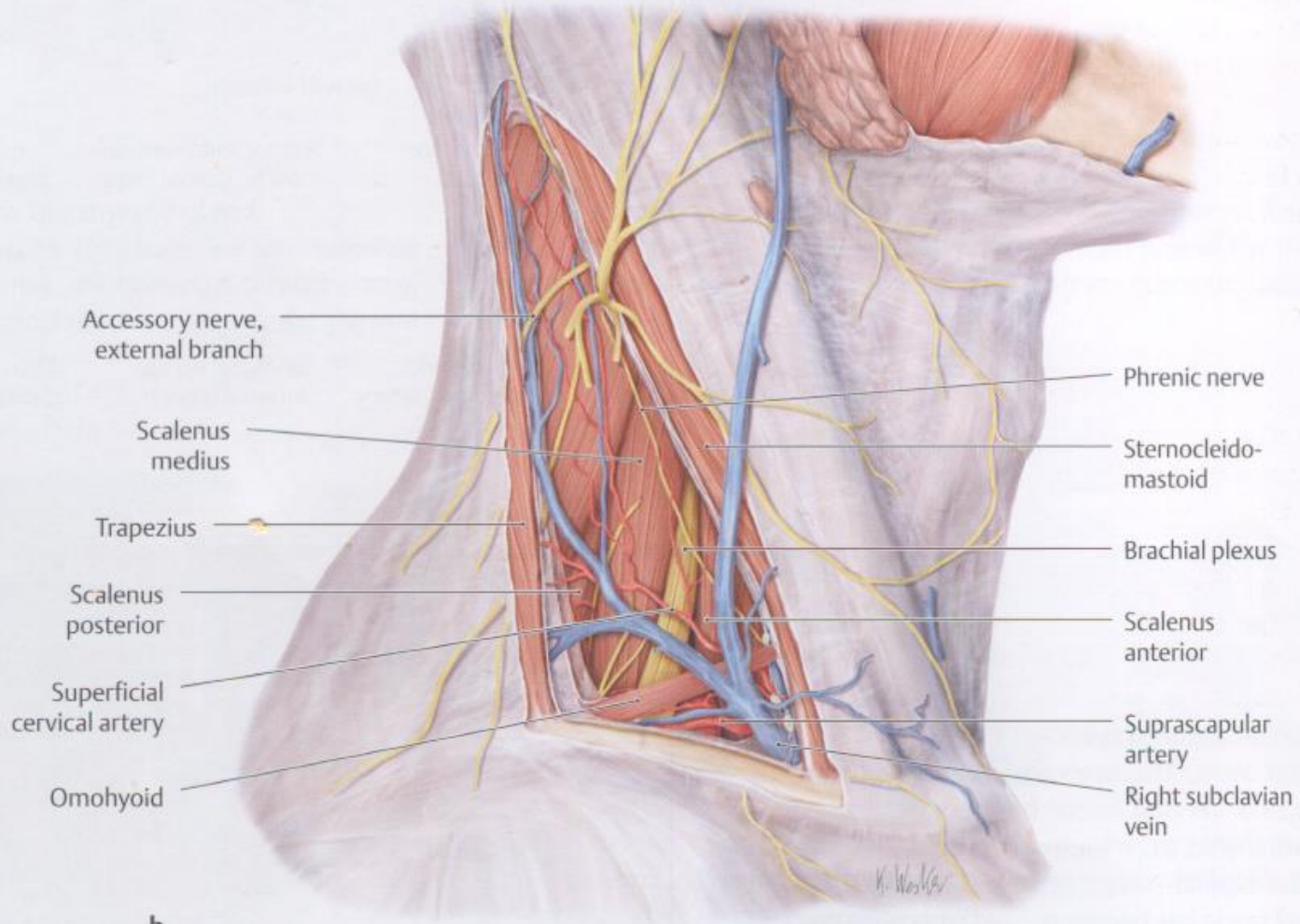
Submandibular region

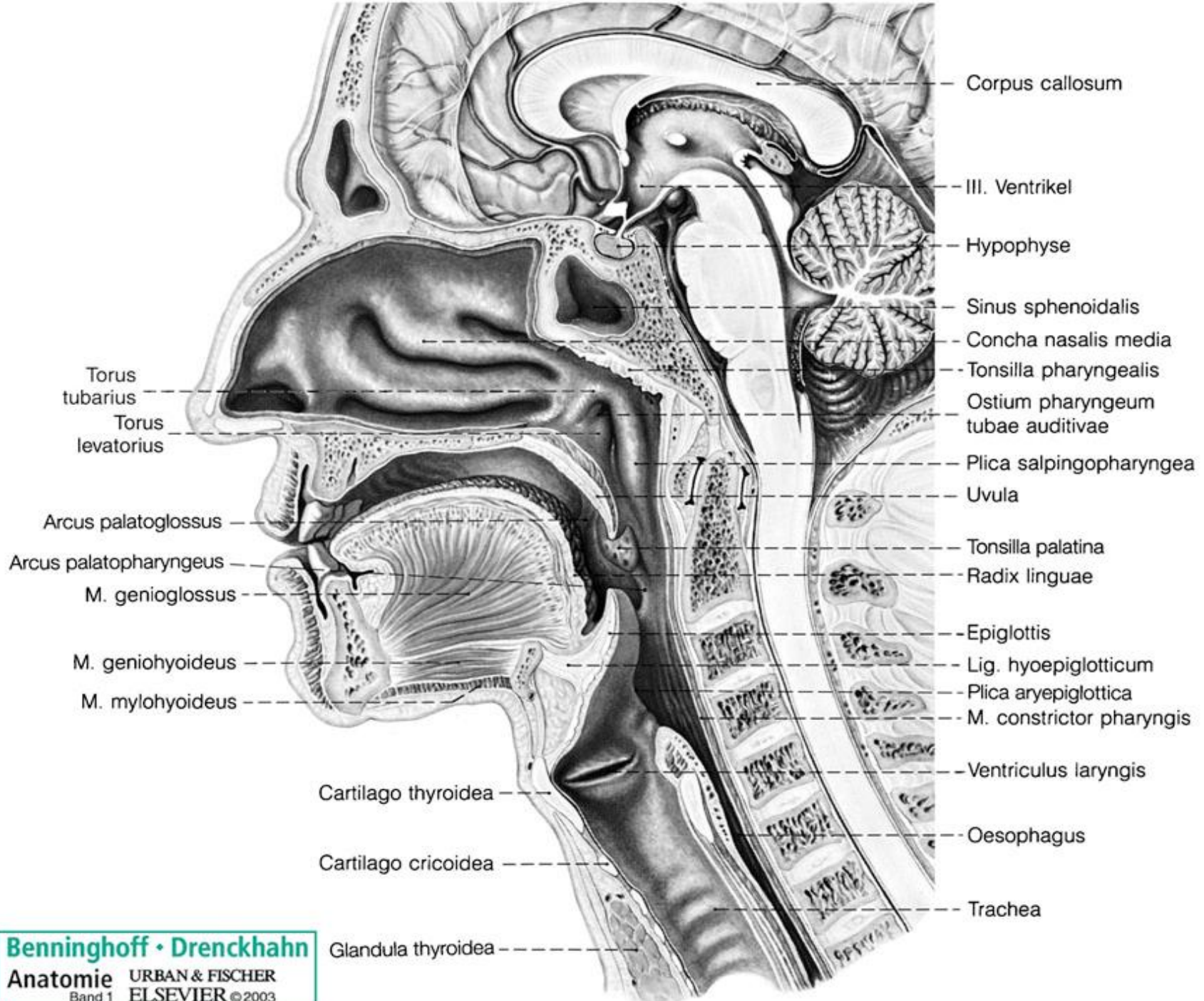


Supraclavicular region



Supraclavicular region





- Corpus callosum
- III. Ventrikel
- Hypophyse
- Sinus sphenoidalis
- Concha nasalis media
- Tonsilla pharyngealis
- Ostium pharyngeum tubae auditivae
- Plica salpingopharyngea
- Uvula
- Tonsilla palatina
- Radix linguae
- Epiglottis
- Lig. hyoepiglotticum
- Plica aryepiglottica
- M. constrictor pharyngis
- Ventriculus laryngis
- Oesophagus
- Trachea

- Torus tubarius
- Torus levatorius
- Arcus palatoglossus
- Arcus palatopharyngeus
- M. genioglossus
- M. geniohyoideus
- M. mylohyoideus

- Cartilago thyroidea
- Cartilago cricoidea
- Glandula thyroidea

Larynx



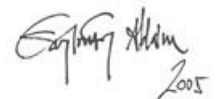


1. M. orbicularis oris
2. M. buccinator
3. Corpus adiposum buccae
4. M. masseter
5. Ramus mandibulae
6. M. pterygoideus med.
7. M. palatoglossus
8. Tonsilla palatina
9. M. palatopharyngeus
10. Isthmus faucium
11. M. constrictor pharyngis
12. Sp. retropharyngeum
13. M. longus capitis
14. Atlas
15. Dens axis
16. Glandula parotidea
17. A. carotis interna
18. A. vertebralis
19. A. carotis externa
20. M. digastricus vent. post.
21. M. semispinalis capitis
22. M. splenius capitis
23. M. trapezius
24. M. sternocleidomast.

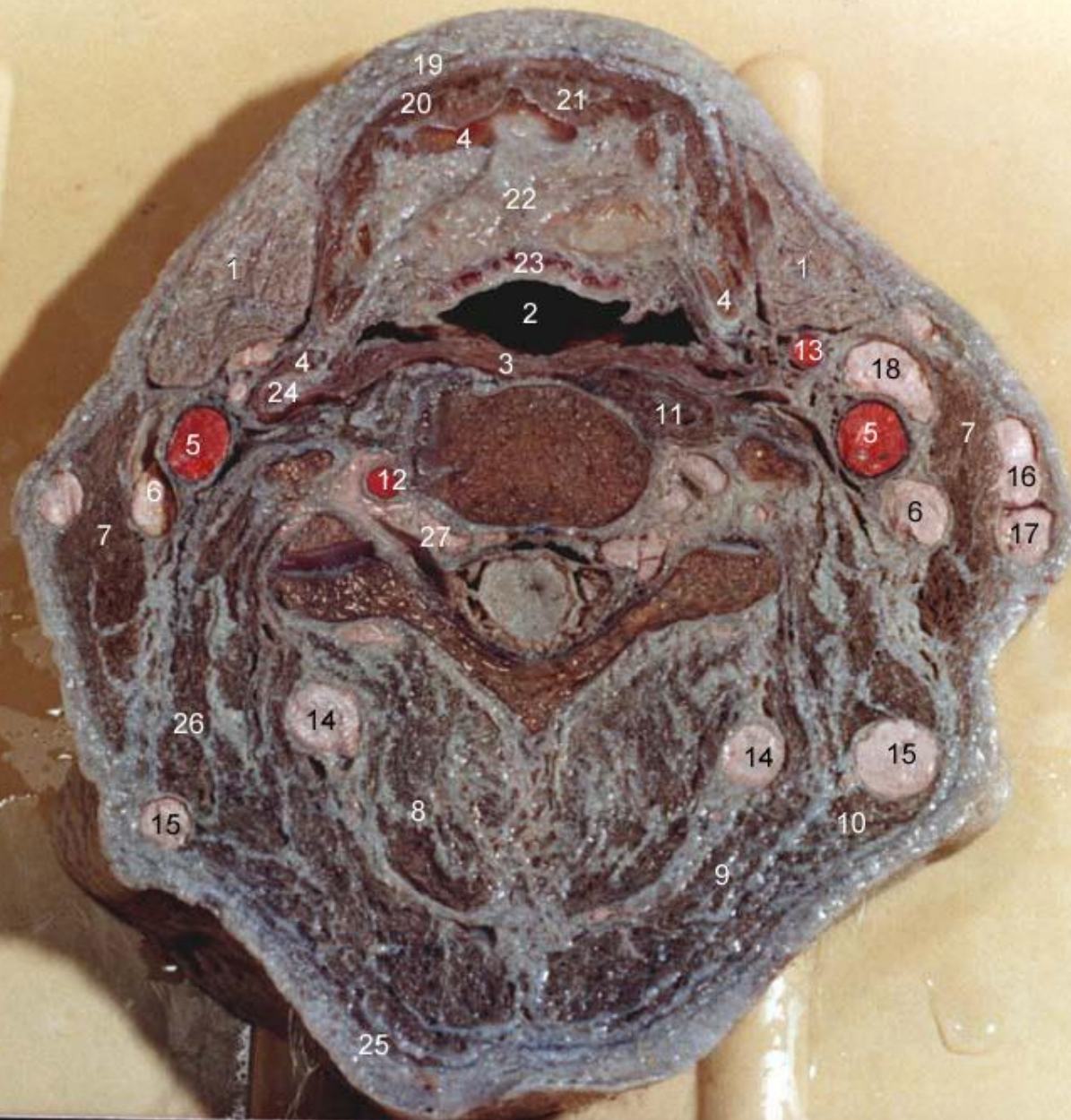
Signature
2005



1. Mandibula
2. M. genioglossus
3. A. lingualis
4. M. hyoglossus
5. M. mylohyoideus
6. Radix linguae
7. Glandula submandibularis
8. A. facialis
9. Pharynx, pars oralis
10. Spatium retropharyngeum
11. A. carotis externa
12. A. vertebralis
13. A. carotis interna
14. Art. zygapophysialis
15. Glandula parotidea
16. M. longus colli
17. M. semispinalis cervicis
18. M. sternocleidomastoideus
19. M. trapezius
20. M. splenius capitis
21. M. longissimus capitis
22. M. levator scapulae
23. M. semispinalis capitis

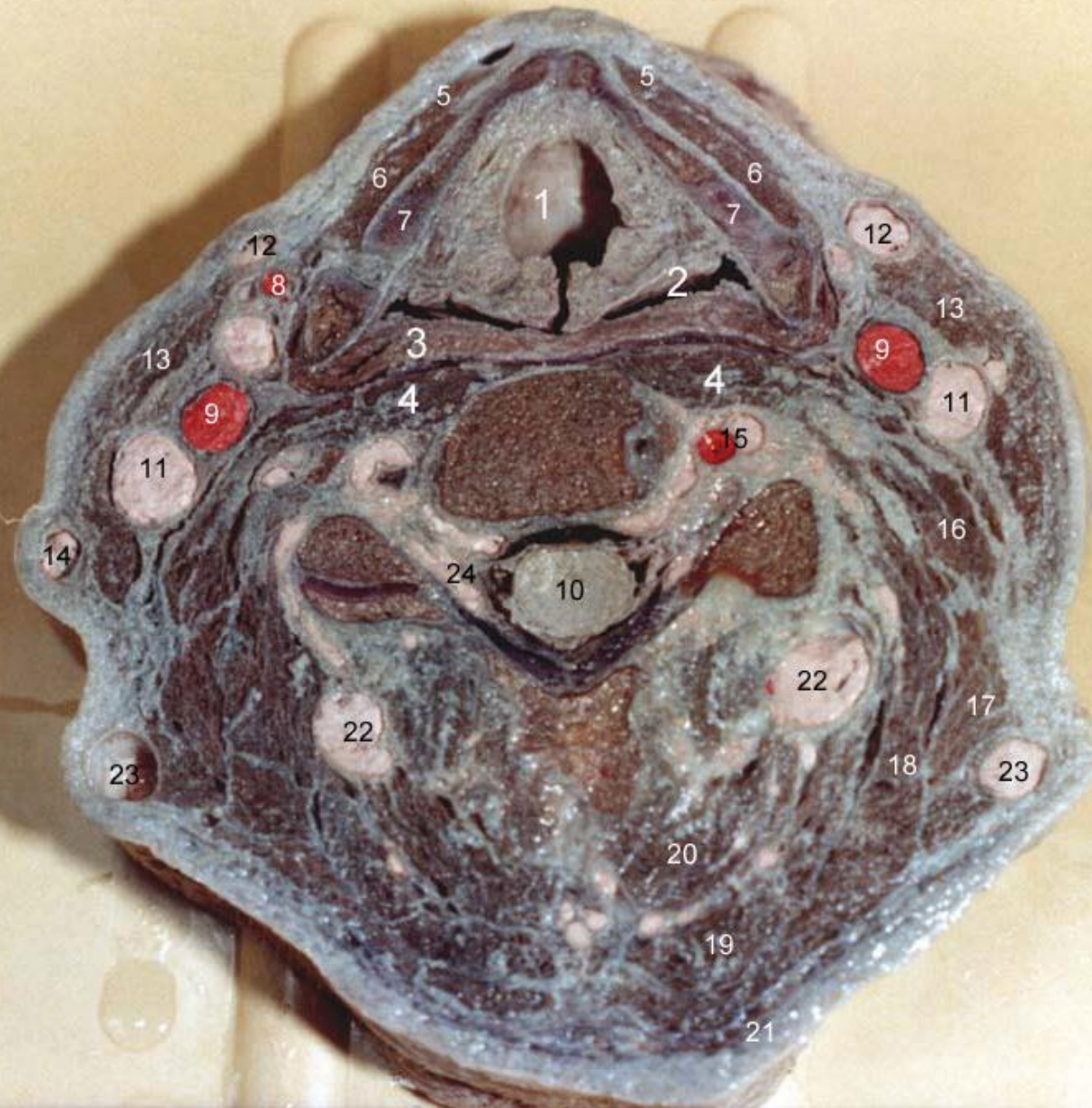


 2005



1. Glandula submandibularis
2. Aditus laryngis
3. M. constrictor pharyngis
4. Os hyoideum
5. A. car. communis
6. V. jugularis int.
7. M. sternocleidomastoideus
8. M. semispinalis cervicis
9. M. semispinalis capitis
10. M. splenius cerv. et cap.
11. M. longus capitis et colli
12. A. vertebralis
13. A. thyroidea superior
14. V. cervicalis profunda
15. V. occipitalis
16. V. jugularis externa
17. V. auricularis post.
18. V. facialis
19. Platysma
20. M. mylohyoideus
21. M. geniohyoideus
22. Corp. adiposum laryngis
23. Epiglottis
24. Cornu sup. cart. thy.
25. M. trapezius
26. M. levator scapulae
27. Plexus venosus vert. int.

Safwan Alham
2005



1. Larynx
2. Pharynx
3. M. constrictor pharyngis inf.
4. M. longus colli
5. M. sternohyoideus
6. M. omohyoideus
7. Cartilago thyroidea
8. A. thyroidea sup.
9. A. carotis comm.
10. Gericvelö
11. V. jugularis int.
12. V. jugularis ant.
13. M. sternocleidomastoideus
14. V. jugularis ext.
15. A. et v. vertebralis
16. M. scalenus medius
17. M. levator scapulae
18. M. splenius cervicis et capitis
19. M. semispinalis capitis
20. M. semispinalis cervicis
21. M. trapezius
22. V. cervicalis profunda
23. V. occipitalis
24. Plexus venosus vert. int.

Sybilina Khan
2005



1. Platysma
2. M. sternohyoideus
3. M. omohyoideus
4. M. thyrohyoideus
5. Cartilago thyroidea
6. Cartilago arytenoidea
7. Rima glottidis
8. Recessus piriformis
(közöttük cavitas pharyngis)
9. M. const. pharyngis inf.
10. M. longus colli
11. A. carotis comm.
12. A. thyroidea sup.
13. V. jugularis int.
14. M. sternocleidomastoideus
15. A. vertebralis
16. M. semispinalis cervicis
17. M. semispinalis capitis
18. M. splenius cerv. et capitis
19. M. trapezius
20. M. levator scapulae
21. Mm. scaleni
22. Art. zygapophysialis


 2005



1. Platysma
2. M. sternohyoideus
3. M. thyrohyoideus
4. M. omohyoideus
5. M. sternocleidomastoideus
6. Glandula thyroidea
7. Cartilago cricoidea
8. M. cricoarytenoideus post.
9. Pars cricopharyngea
m. constrictoris pharyngis
10. Pharynx
11. A. carotis comm.
12. V. jugularis int.
13. M. longus colli
14. Discus intervertebralis
15. A. vertebralis
16. M. semispinalis cervicis
17. M. semispinalis capitis
18. M. splenius cervicis et cap.
19. M. trapezius
20. M. levator scapulae

Signature
2005