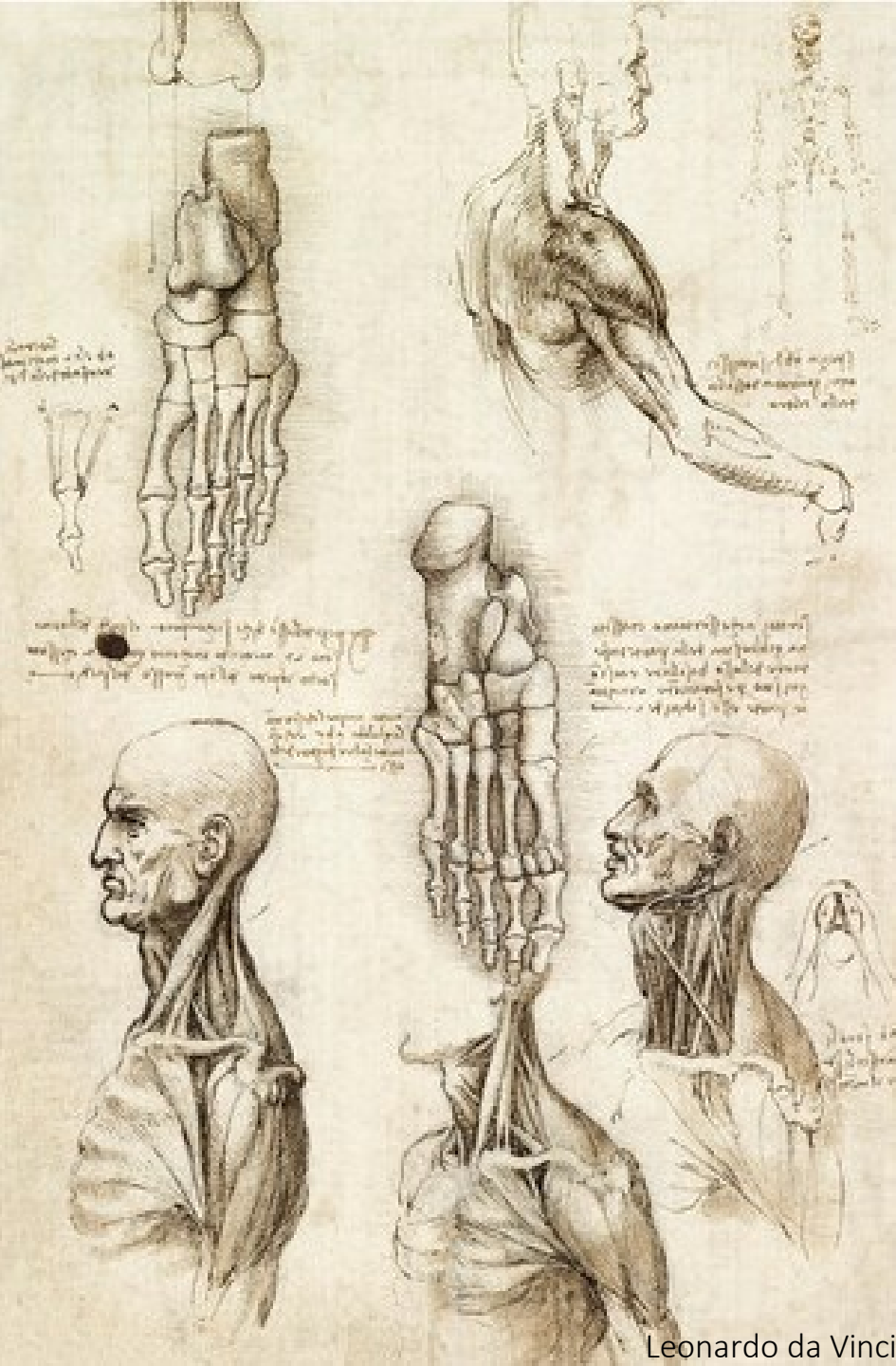


# Nyakizmok, nyaki izomháromszögek, nyaki fasciák

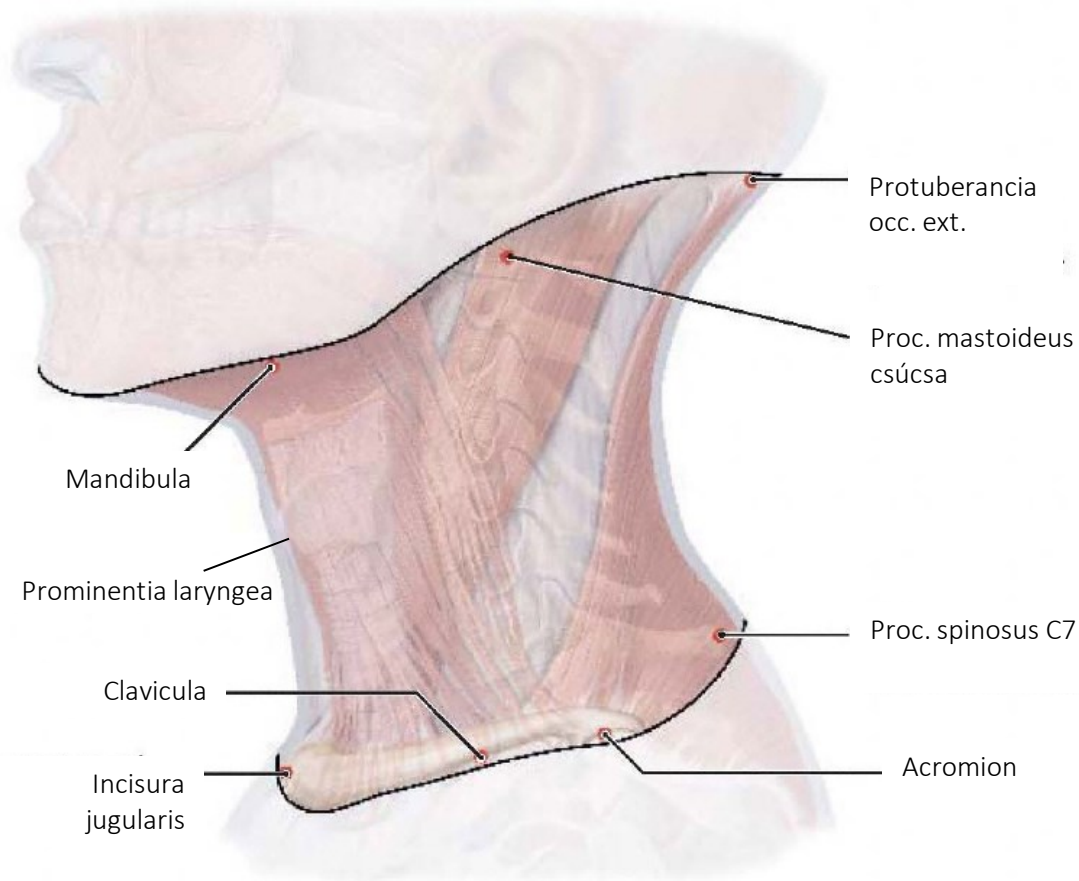
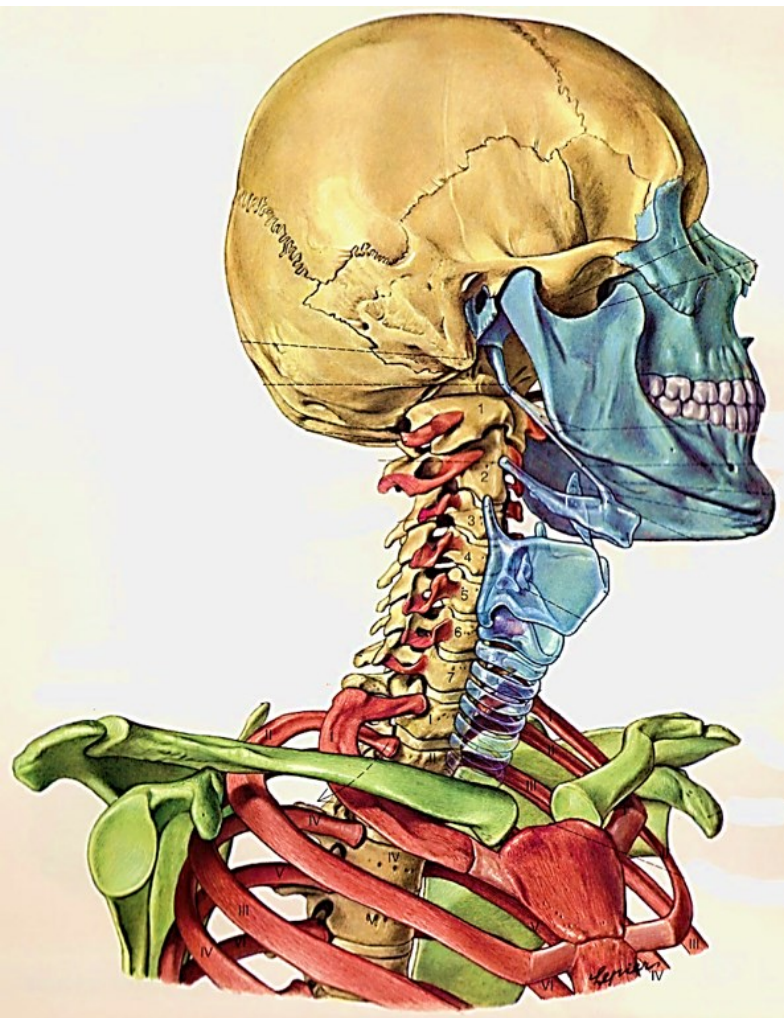


Leonardo da Vinci

Pálfi Emese

Semmelweis Egyetem

Anatómiai, Szövet- és Fejlődéstani Intézet



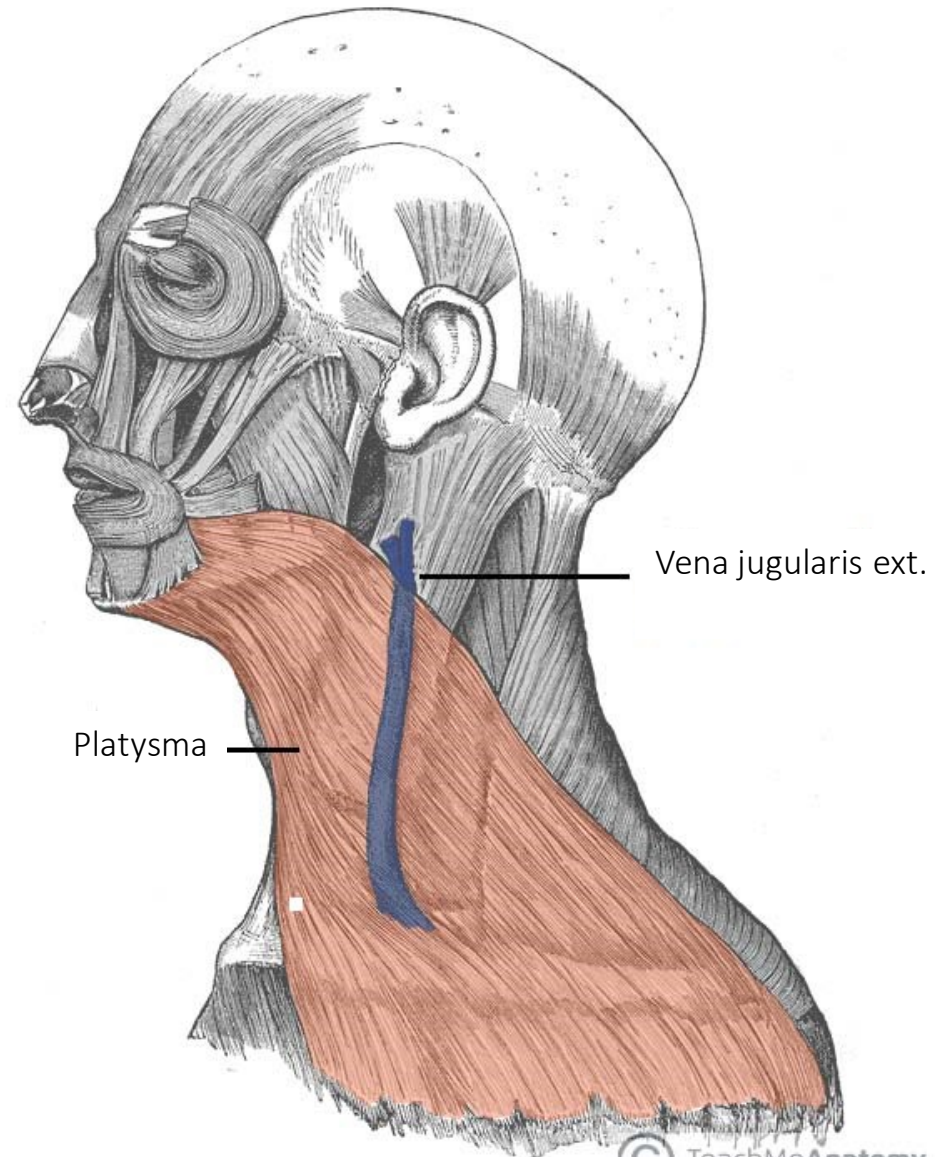
# Felületes nyakizmok

# Platysma

E: mandibula bázisa felett

T: mell bőrén

N. VII. (r. colli)





75%

15%

10%

## Platysmoplastica

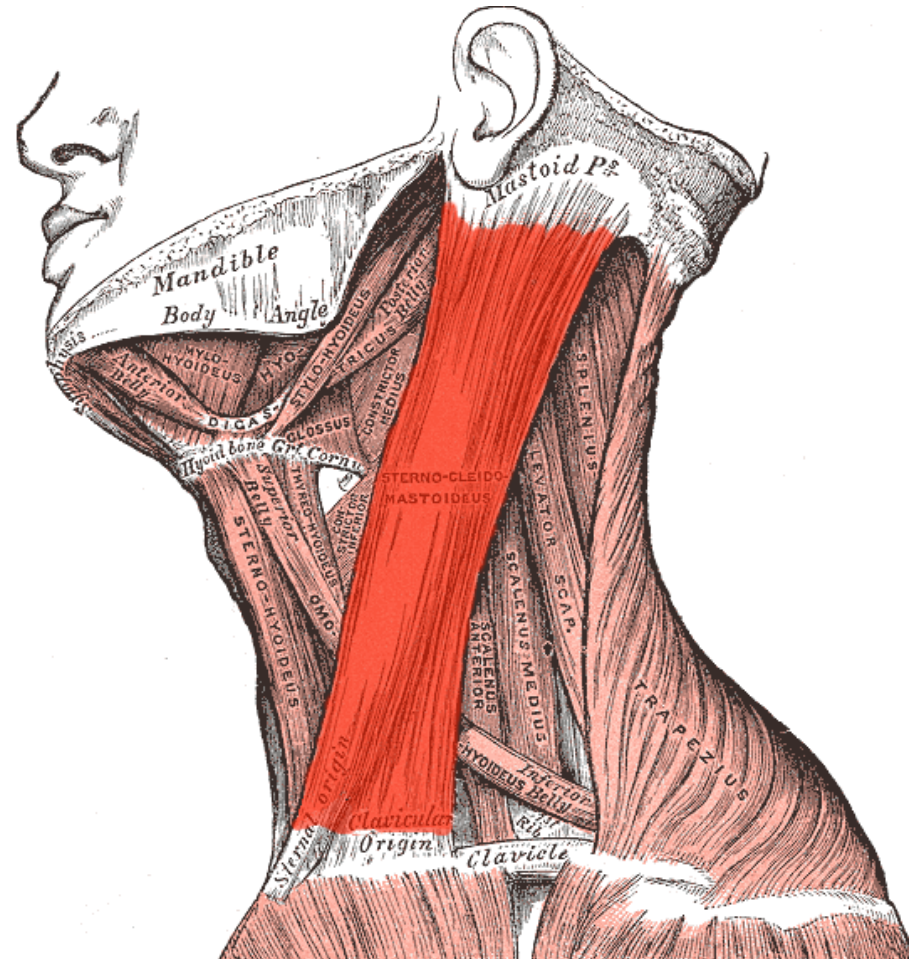
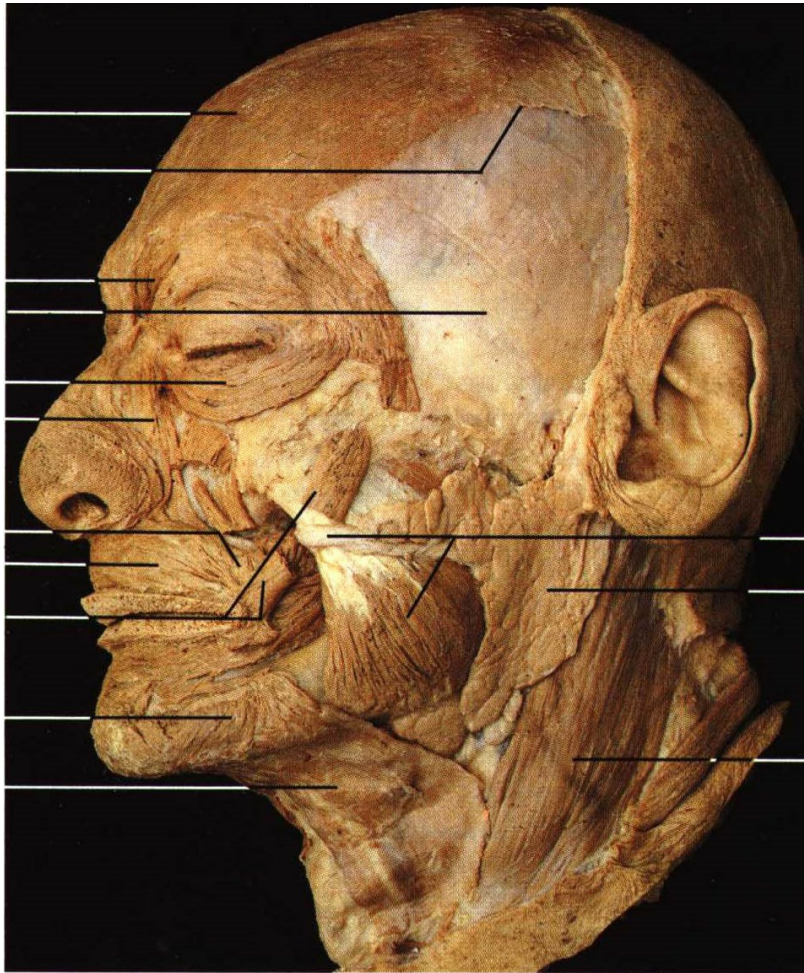


# M. sternocleidomastoideus

E: manubrium sterni, clavicula sternalis harmada

T: proc. mastoideus

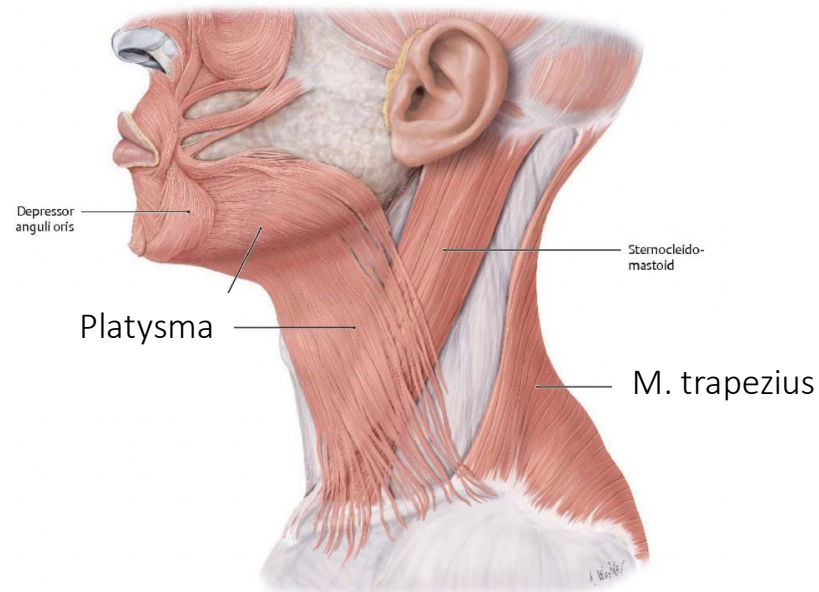
N. XI.



# Torticollis



N. Accessorius vizsgálata:



Nyelvcsont feletti izmok

*Mm. suprahyoidei*



## M. mylohyoideus/diaphragma oris

E: linea mylohyoidea

T: corpus ossis hyoidei

N. V/3

## M. geniohyoideus

E: spina mentalis

T: corpus ossis hyoidei

N. XII.

## M. digastricus mandibulae

E: fossa digastrica; proc. mastoideus

T: közbülső ín

N. V/3., N. XII.

## M. stylohyoideus

E: proc. styloideus

T: cornu major és corpus ossis hyoidei között

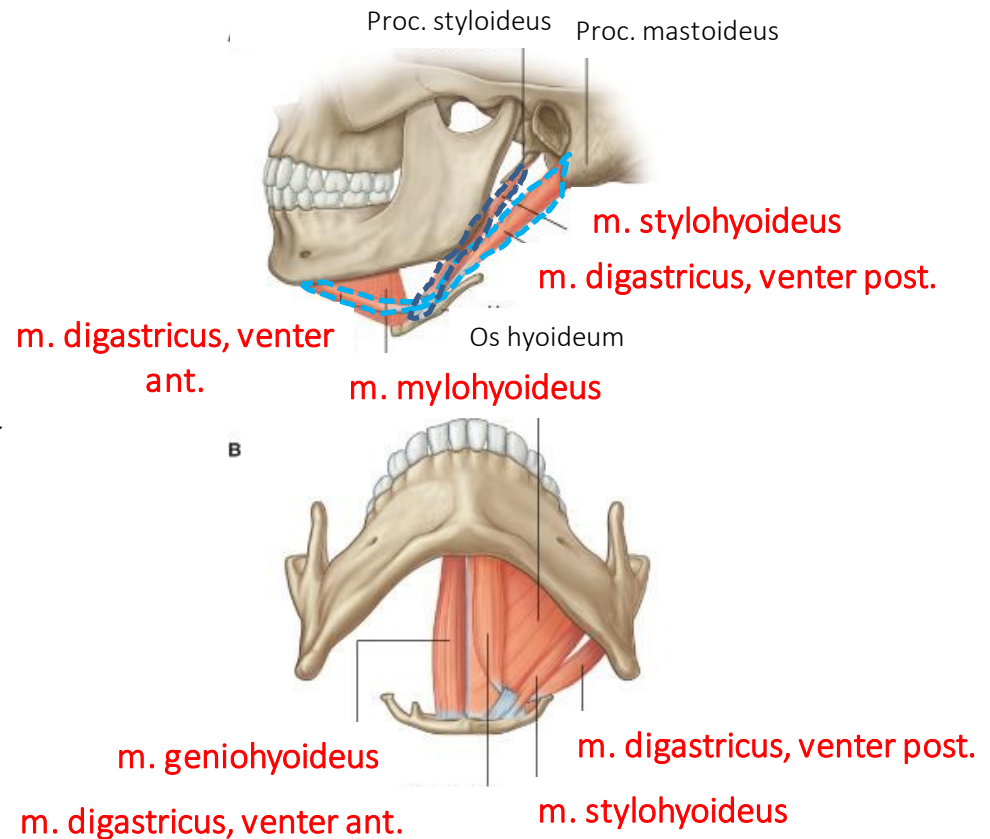
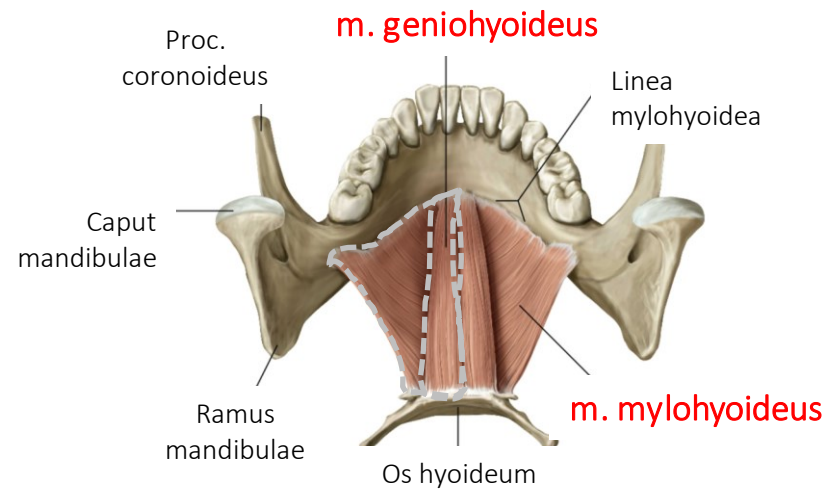
N. VII.

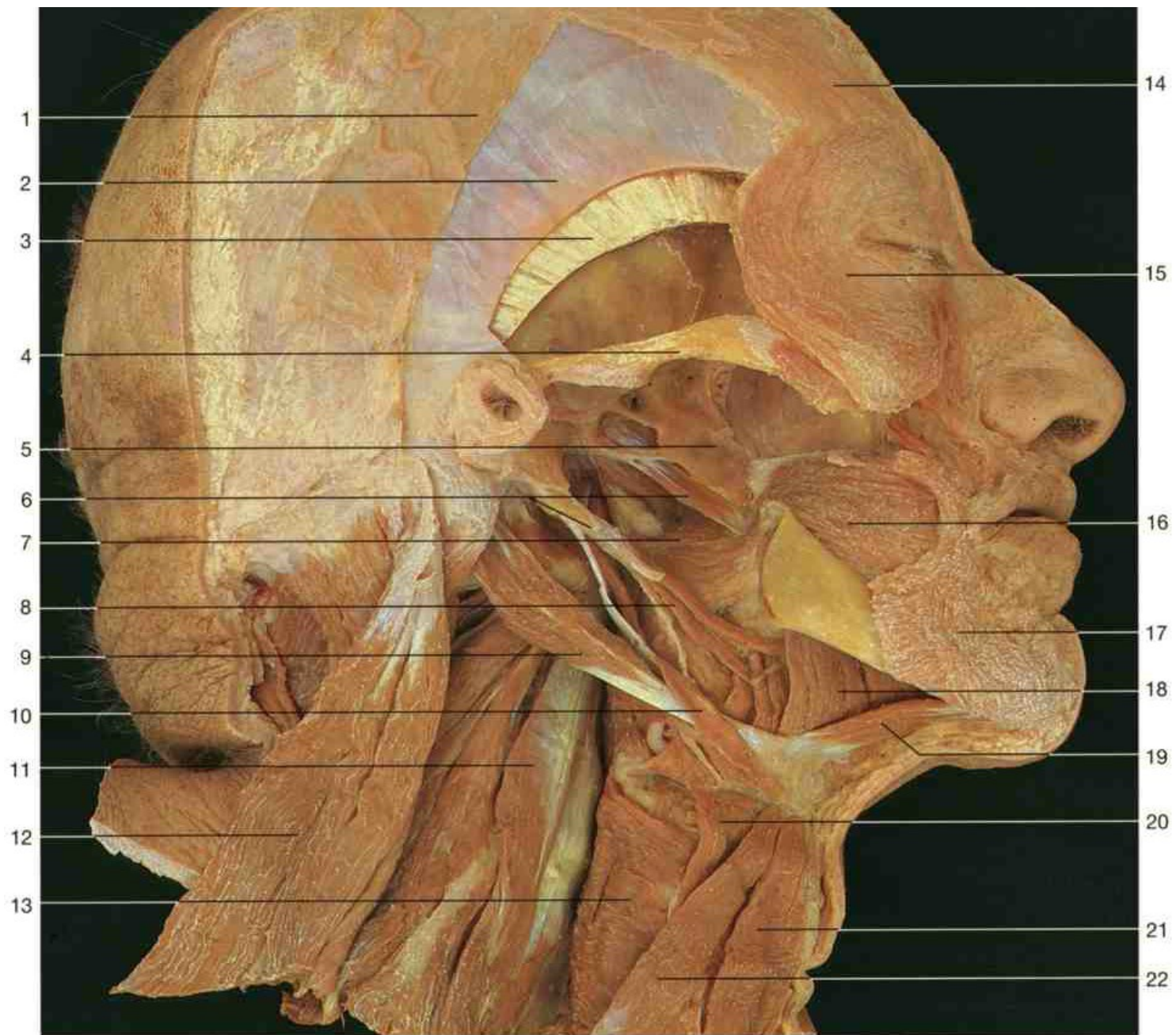
Működés:

száj aktív nyitása

nyelés → nyelvcsont és gége emelése

hangadás





9 – m. digastricus v. post.  
10 – m. stylohyoideus

18 – m. mylohyoideus  
19 – m. digastricus v. ant.

# Nyelvcsont feletti izmok

*Mm. infrahyoidei*

## M. sternohyoideus

E: manubrium sterni, art. sternoclavicularis tokja

T: corpus ossis hyoidei

Ansa hypoglossi

## M. omohyoideus

E: corpus ossis hyoidei; incisura scapulae et áthidaló szalag

T: közbülső ín

Ansa hypoglossi

## M. thyrohyoideus

E: cart. thyroidea – linea obliqua

T: corpus ossis hyoidei

Ansa hypoglossi

## M. sternothyroideus

E: manubrium sterni

T: cart. thyroidea – linea obliqua

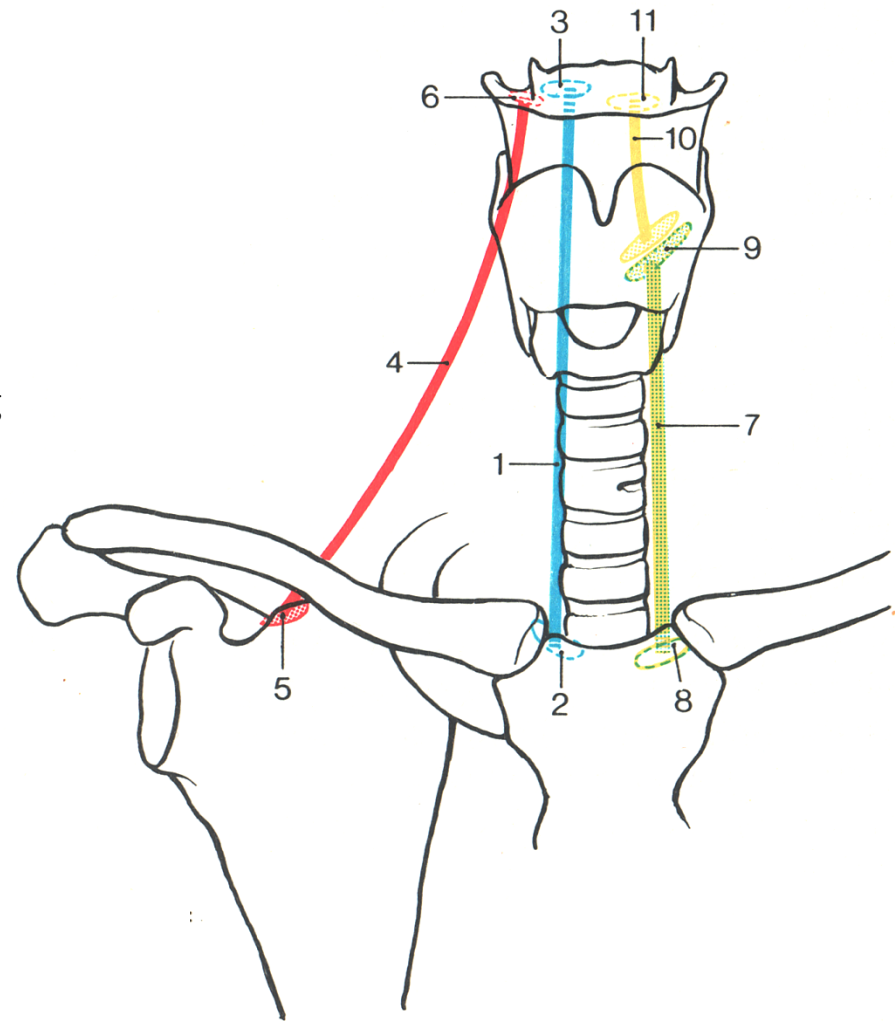
Ansa hypoglossi

Működés:

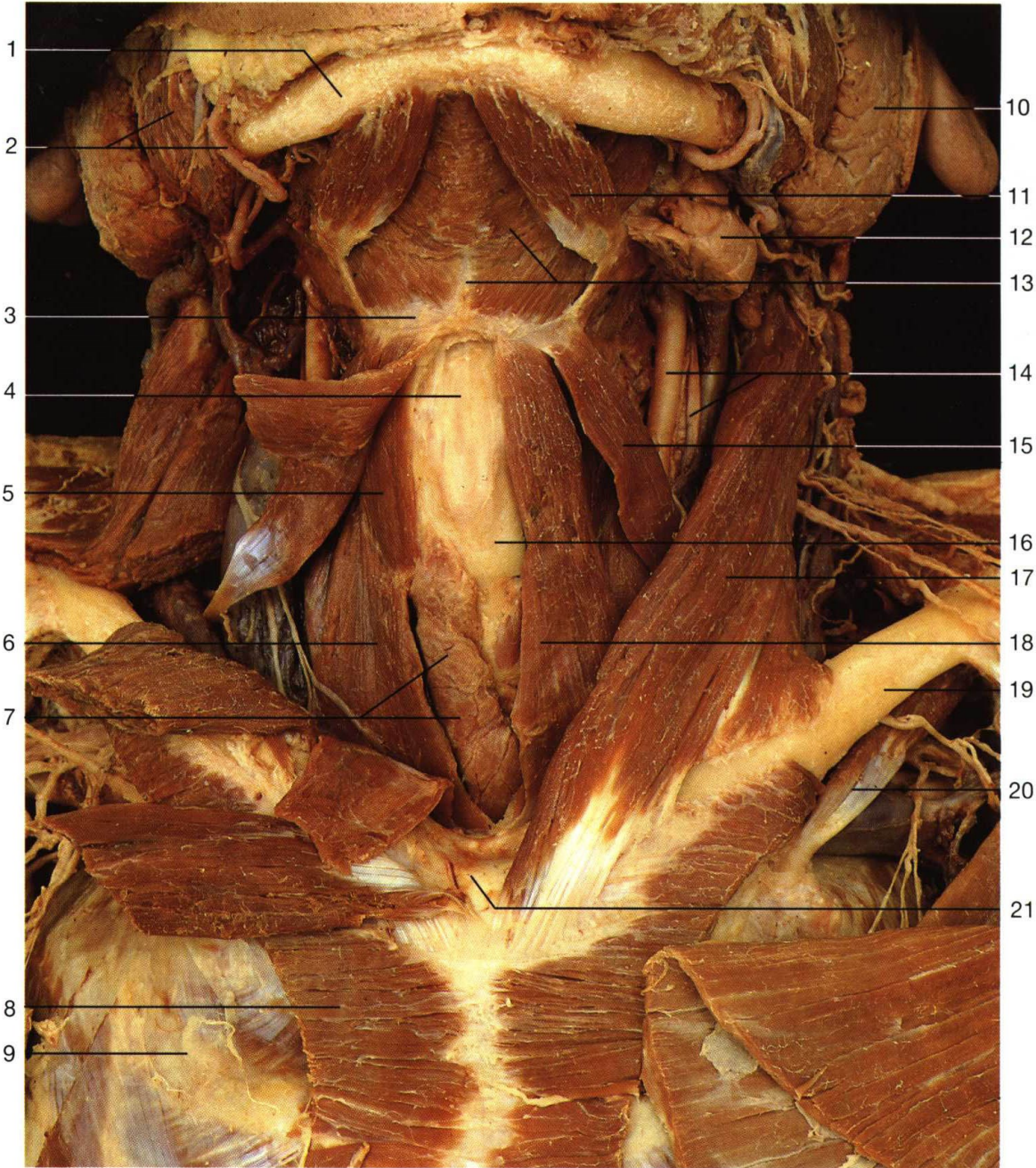
száj aktív nyitása

ivás, szopás

nyaki vénák tágán tartása

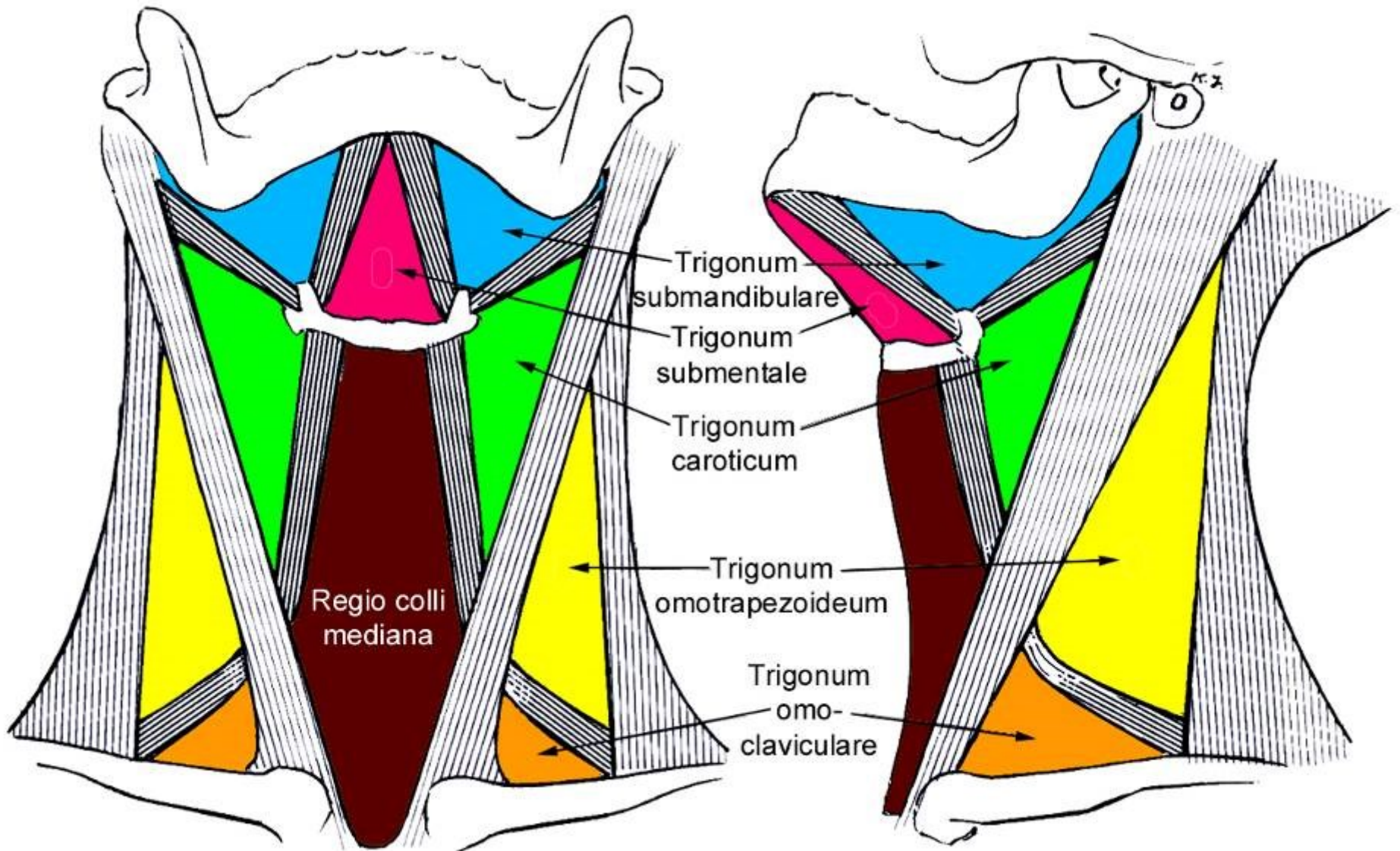


- 1. m. sternohyoideus
- 7. m. sternothyroideus
- 10. m. thyrohyoideus
- 4. m. omohyoideus

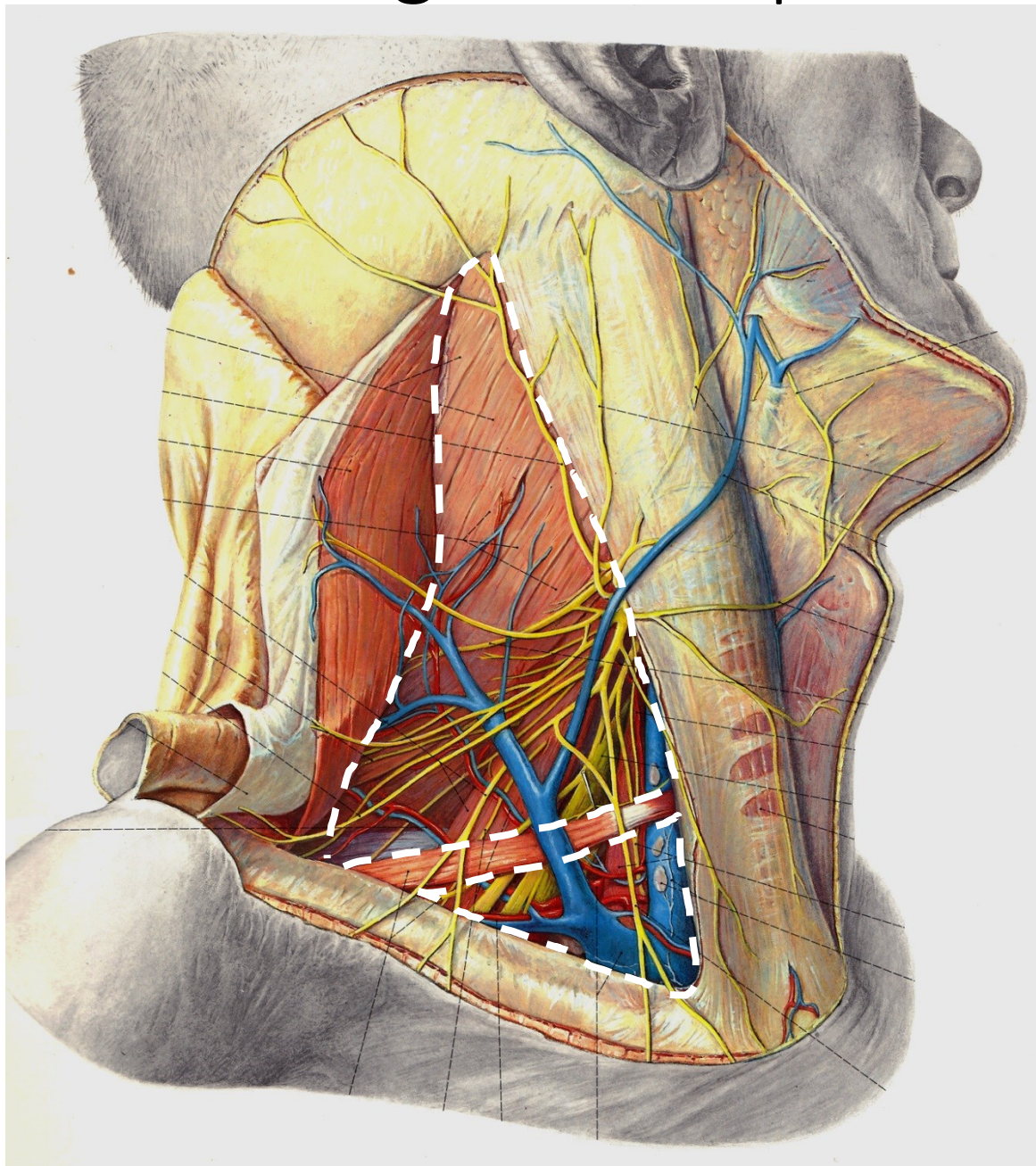


- 5 – m. thyrohyoideus
- 6 – m. sternohyoideus
- 15 – m. omohyoideus
- 18 – m. sternohyoideus

# Nyaki izomháromszögek



# Trigonum supraclaviculare



## Trigonum omotrapezoideum

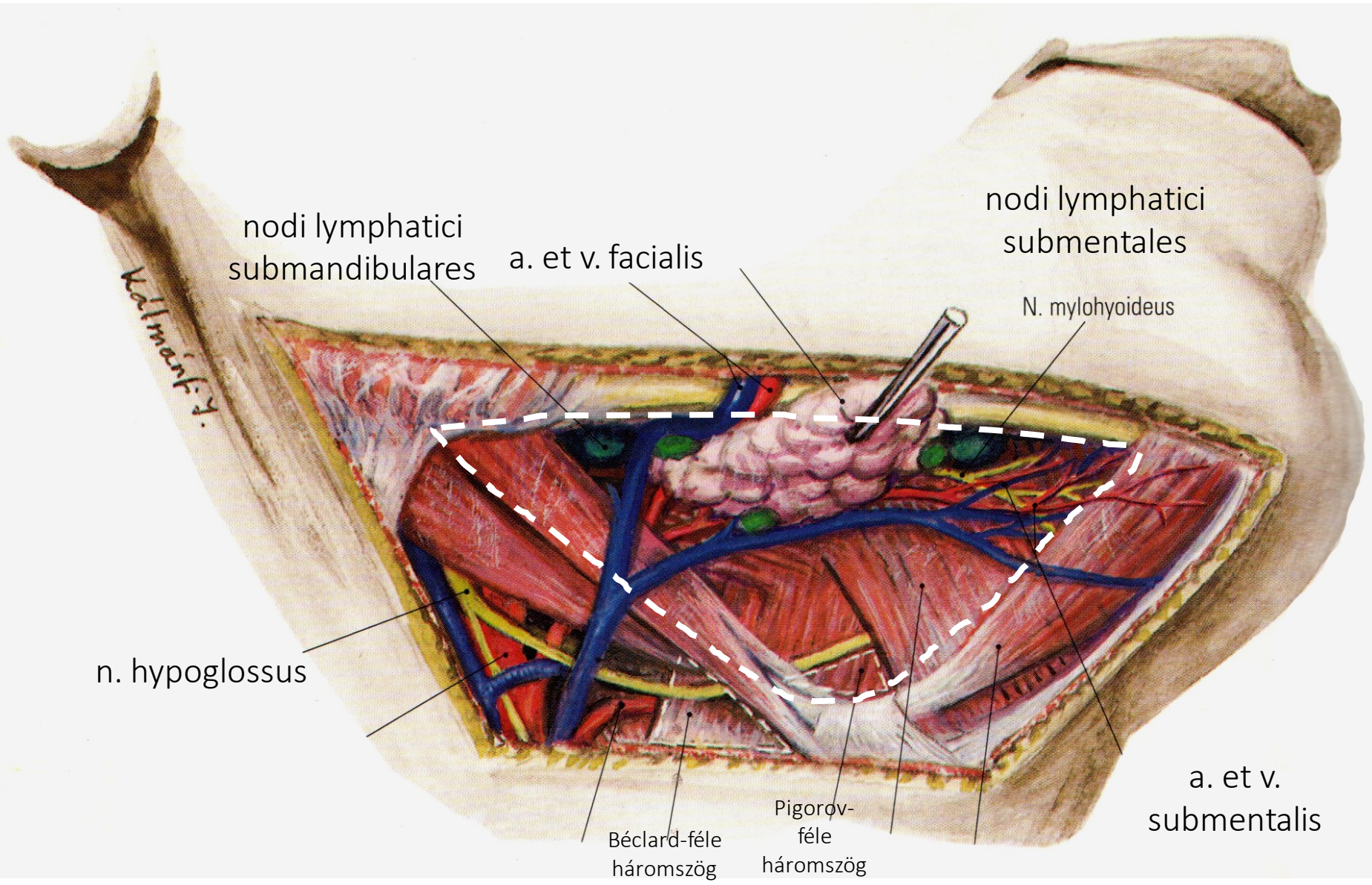
- plexus cervicalis
- n. accessorius

## Trigonum omoclaviculare

- v. jugularis externa
- nyak felületes artériái
- a. et v. subclavia
- plexus brachialis
- n. phrenicus

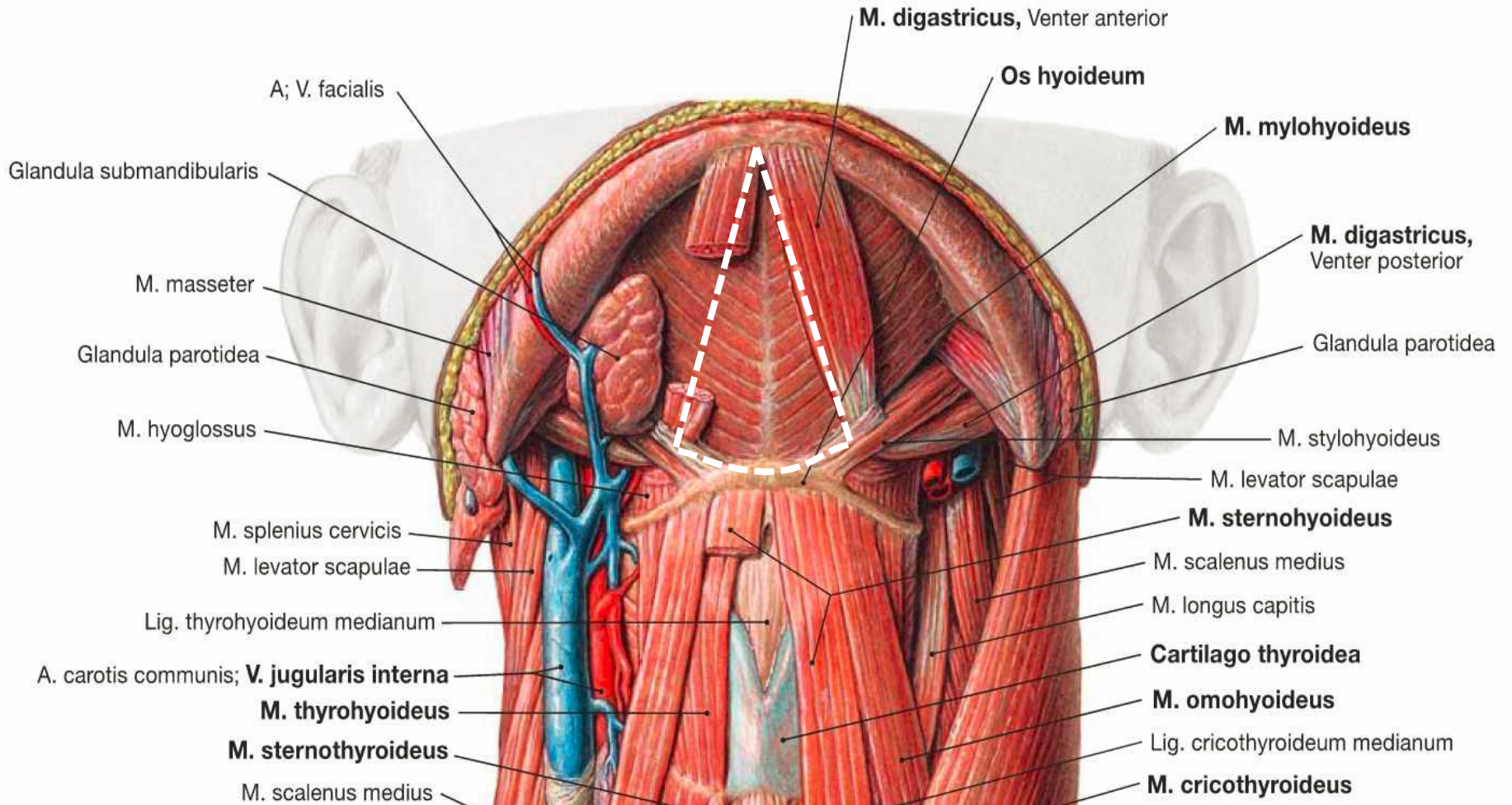
# Trigonum submandibulare

- gl. submandibularis

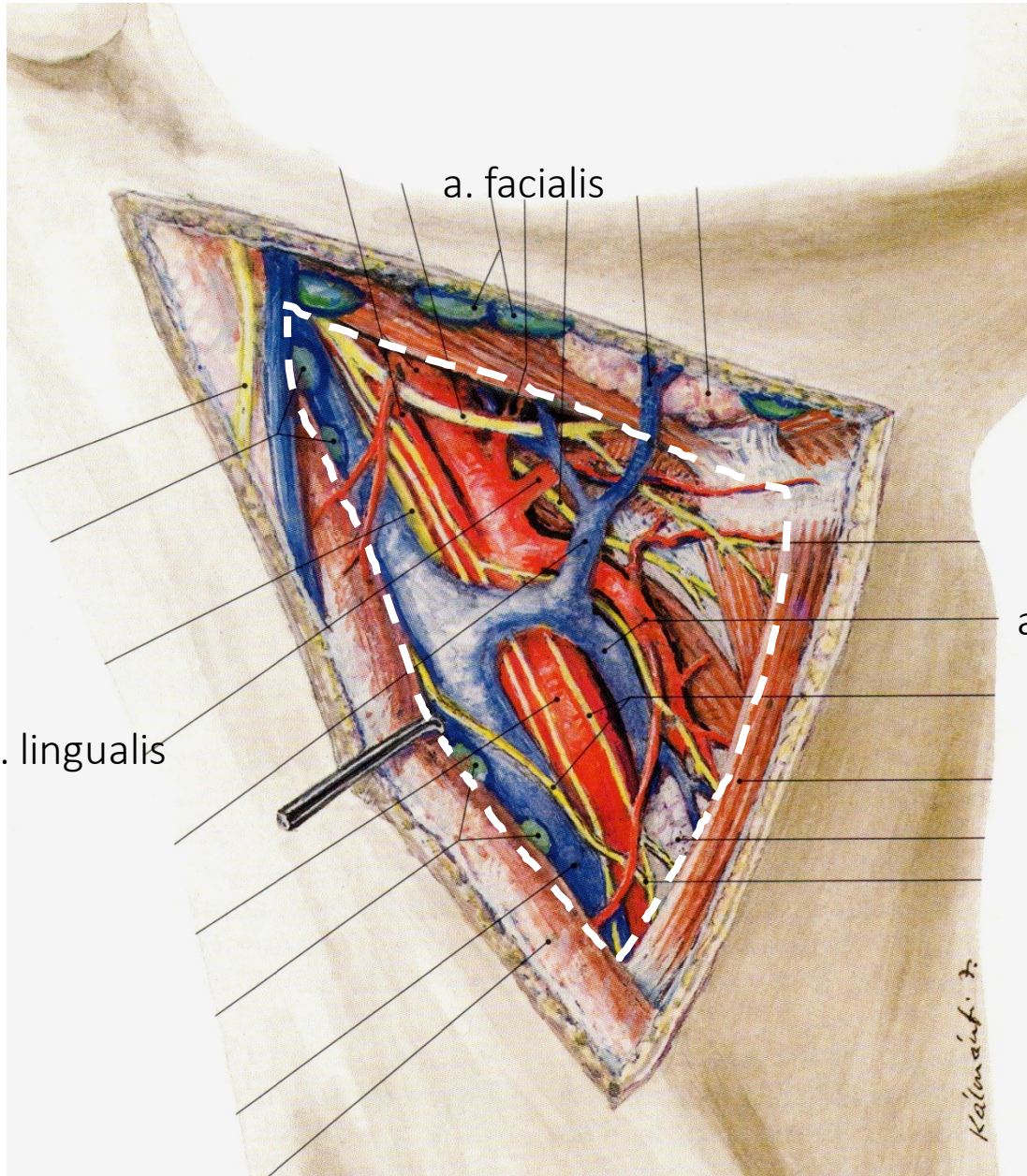




# Trigonum submentale



# Trigonum caroticum



- vagina carotica
  - a. carotis communis
  - v. jugularis interna
  - n. vagus
  - ansa cervicalis profunda
- n. hypoglossus

a. et v. thyroidea sup.

a. lingualis

a. facialis

Kalmant. 7.

# Mély nyakizmok

## **M. scalenus anterior**

E: C3-6 harántnyúlvány

T: 1. borda

Plexus brachialis (C5-7)

## **M. scalenus medius**

E: C2-7 harántnyúlvány

T: 1. borda

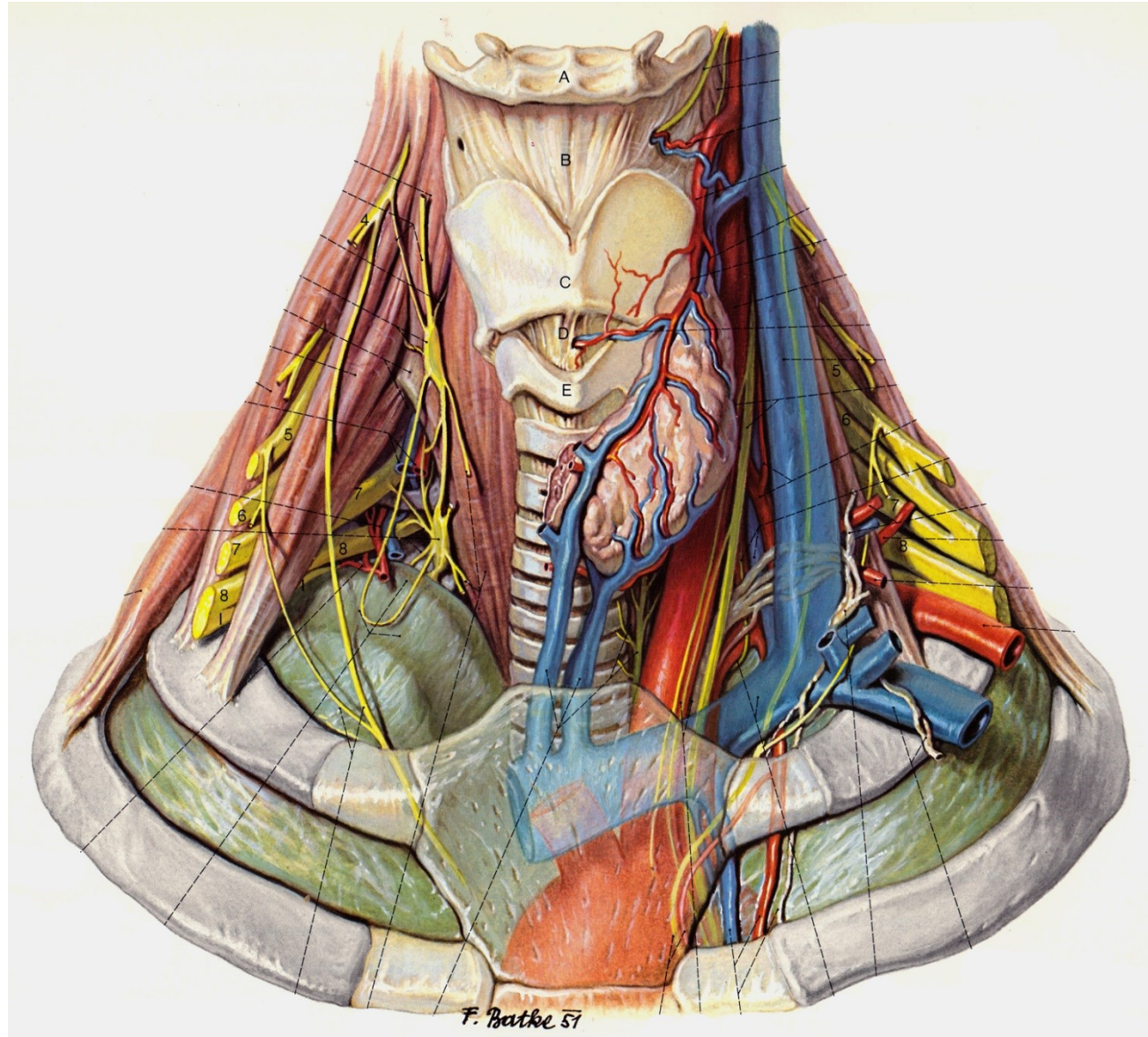
Plexus brachialis (C6-8)

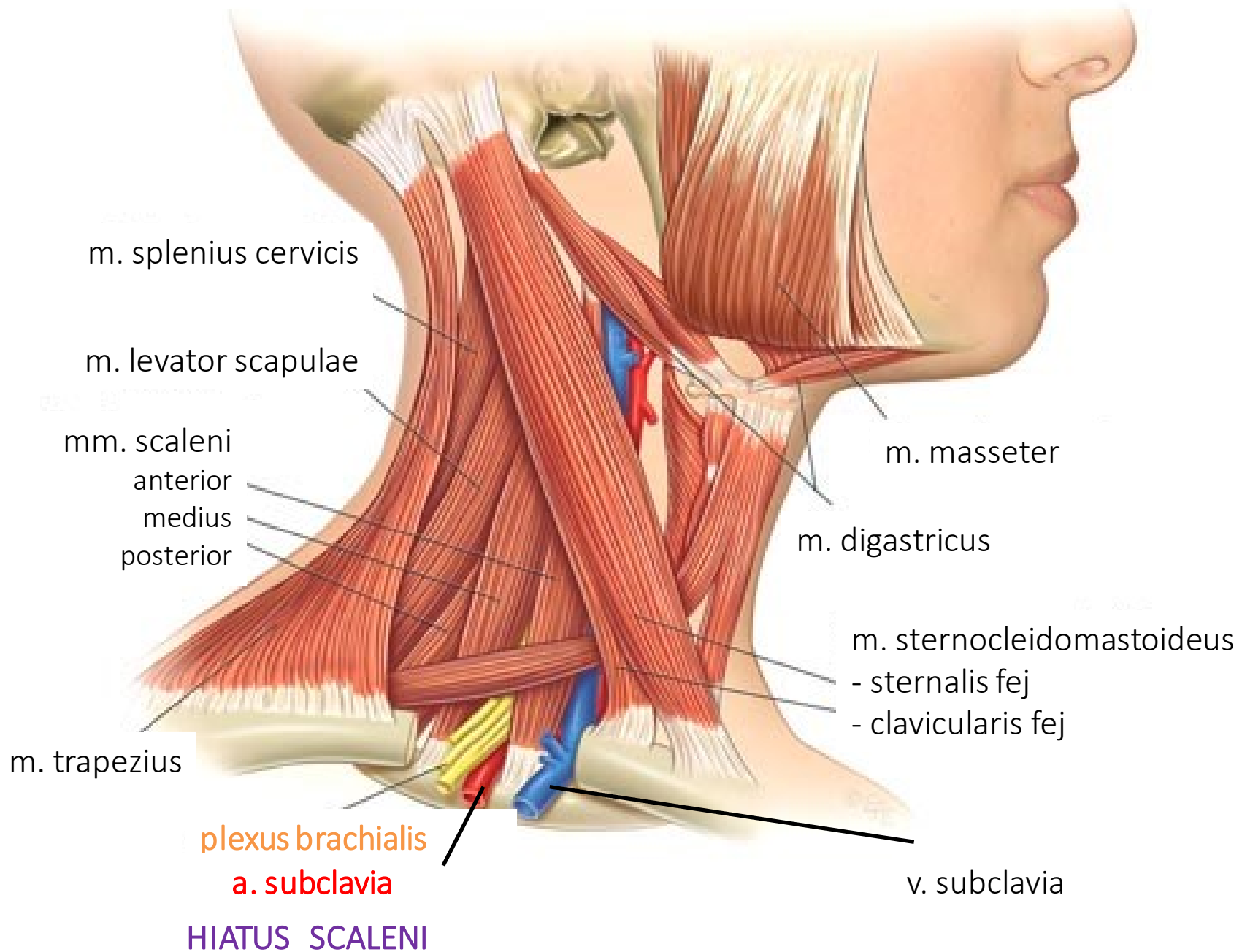
## **M. scalenus posterior**

E: C5-6 harántnyúlvány

T: 2. borda

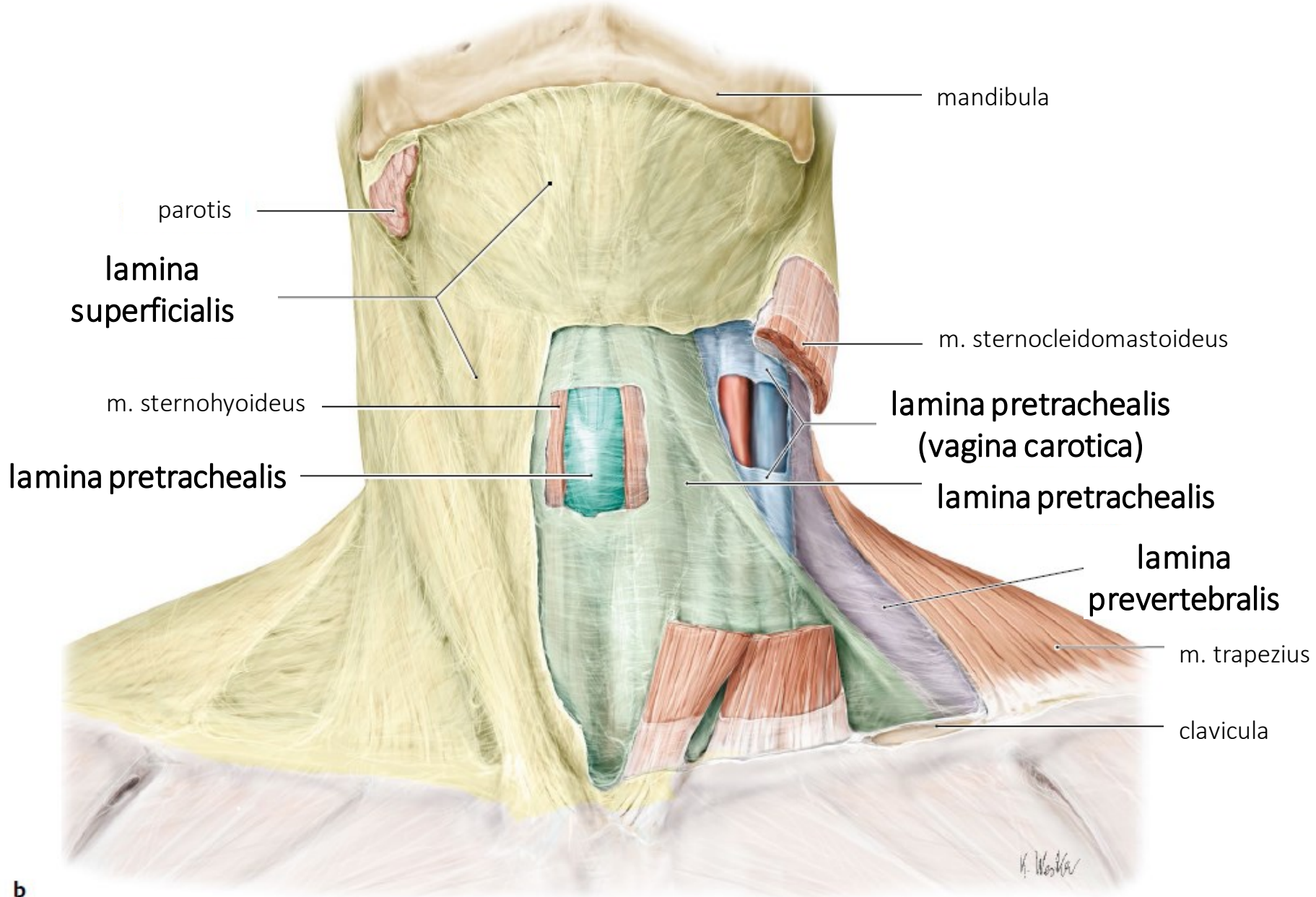
Plexus brachialis (C7-8)

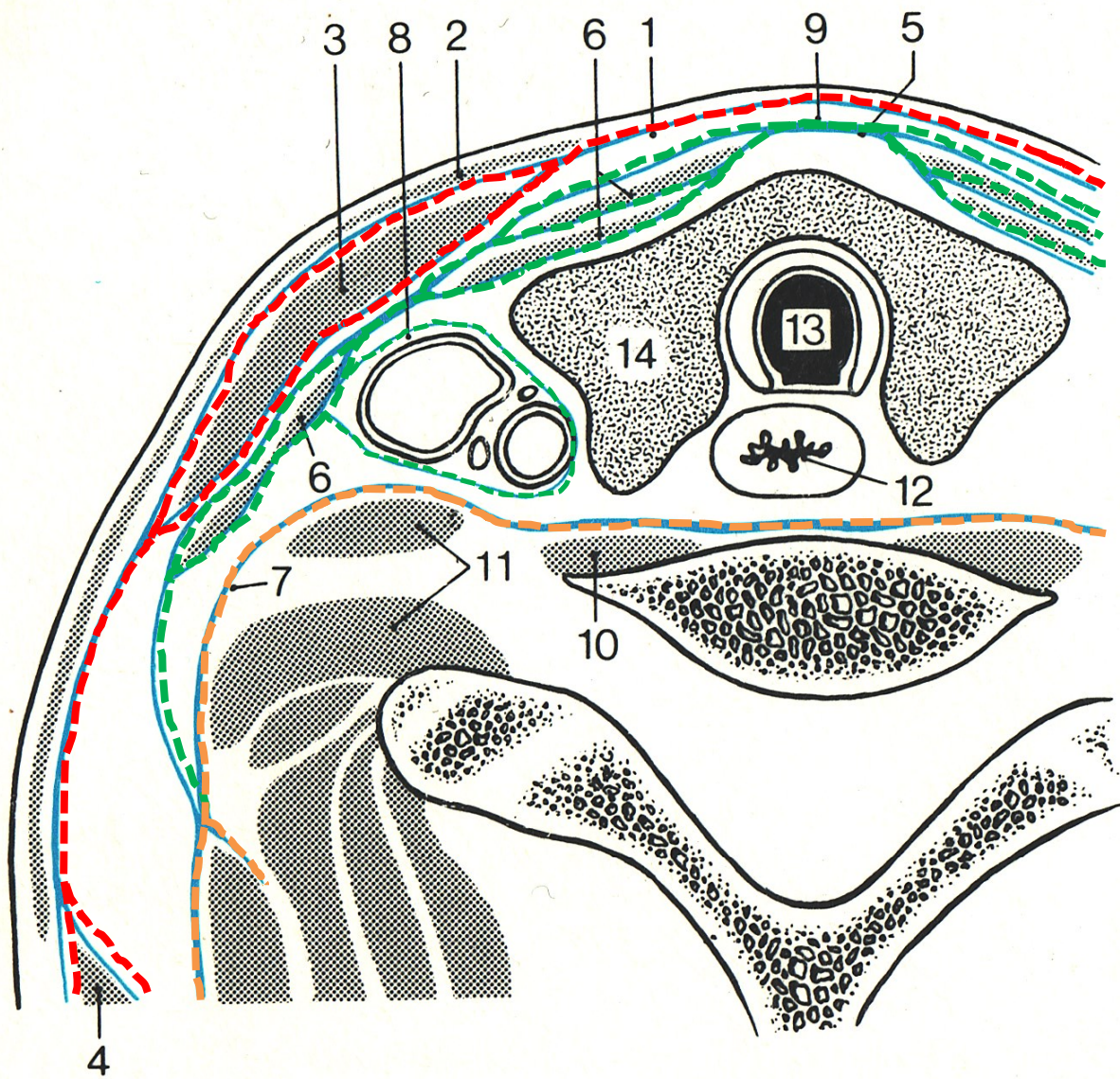




# Nyaki fascia

*Fascia cervicalis*





**Lamina superficialis**

- m. sternocleidomastoideus
- m. trapezius

**Lamina pretrachealis**

- mm. infrahyoidei
- pajzsmirigy
- vagina carotica

**Lamina prevertebralis**

- mm. scaleni
- m. longus capitis
- m. longus colli
- tr. sympathicus

1 – lamina superficialis  
 2 – platysma  
 3 – m. sternocleidomastoideus  
 4 – m. trapezius

5 – gl. thyroidea  
 6 – m. sternohyoideus et m. sternothyroideus  
 7 – lamina prevertebralis  
 8 – vagina carotica

9 – lamina pretrachealis  
 10 – m. longus capitis  
 11 – mm. scaleni  
 12 – oesophagus

13 – trachea  
 14 – cart. thyroidea

# Köszönöm a figyelmet!

Források:

*Dr. Ádám Ágota: Nyakizmok, nyaki izomháromszögek, nyaki fasciák*

*Dr. Kozsarek Márk: Muscles of the neck*

*Dr. Lendvai Dávid: Nyakizmok*

Szentágothai-Réthelyi: Funkcionális anatómia I., 1994

Tömböl: Tájanatómia

Pernkopf: Atlas of Topographic and Applied Human Anatomy : Head and Neck

Platzer: Taschenatlas - Bewegungsapparat, 1999

Rochen, Yokochi, Drecoll: Color atlas of anatomy (7th edition)