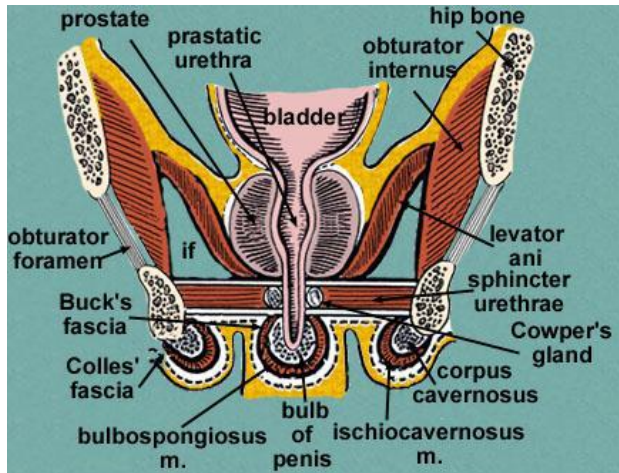


A FÉRFI MEDENCE ÉS GÁTTÁJÉK TOPOGRÁFIÁJA, METSZETANATÓMIÁJA



Dr. Székely Andrea Dorottya

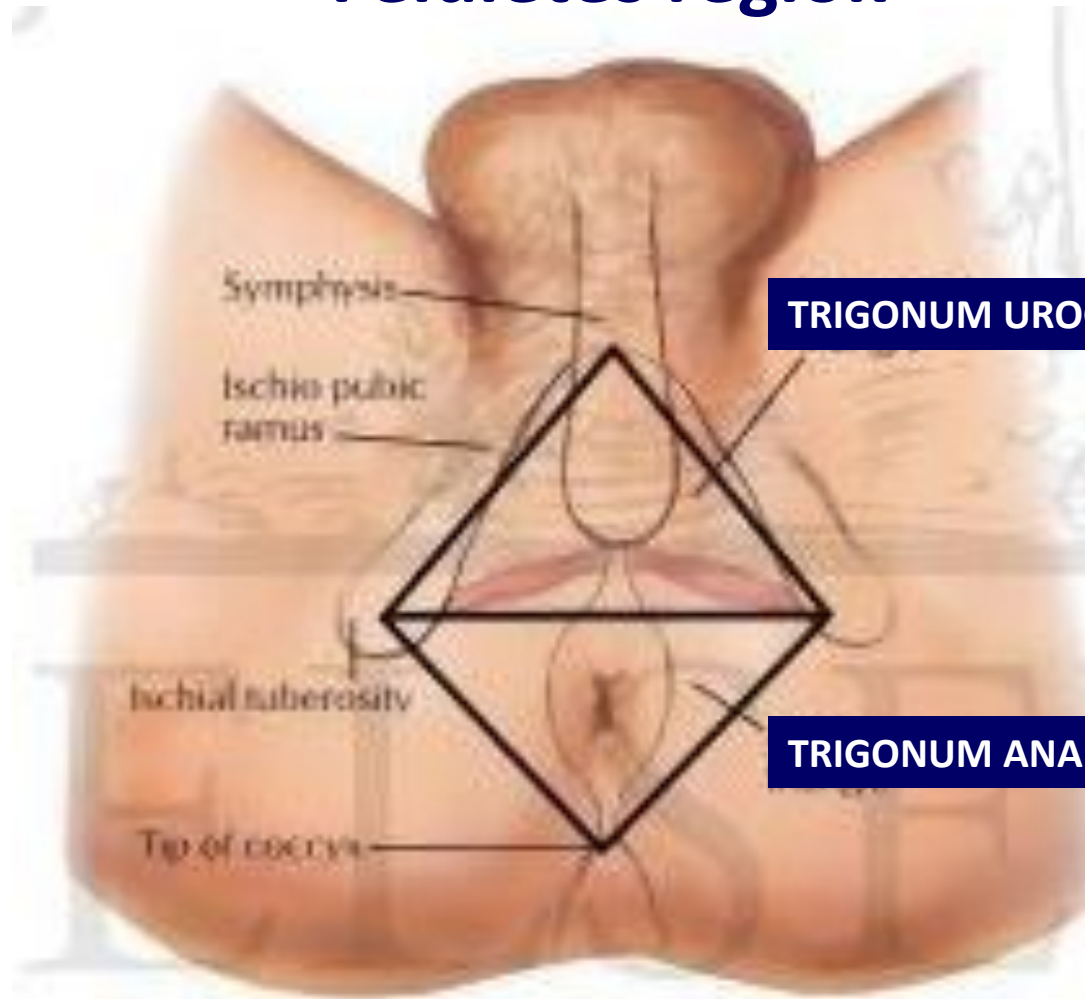
Semmelweis Egyetem

Anatómiai, Szövet- és Fejlődéstani Intézet

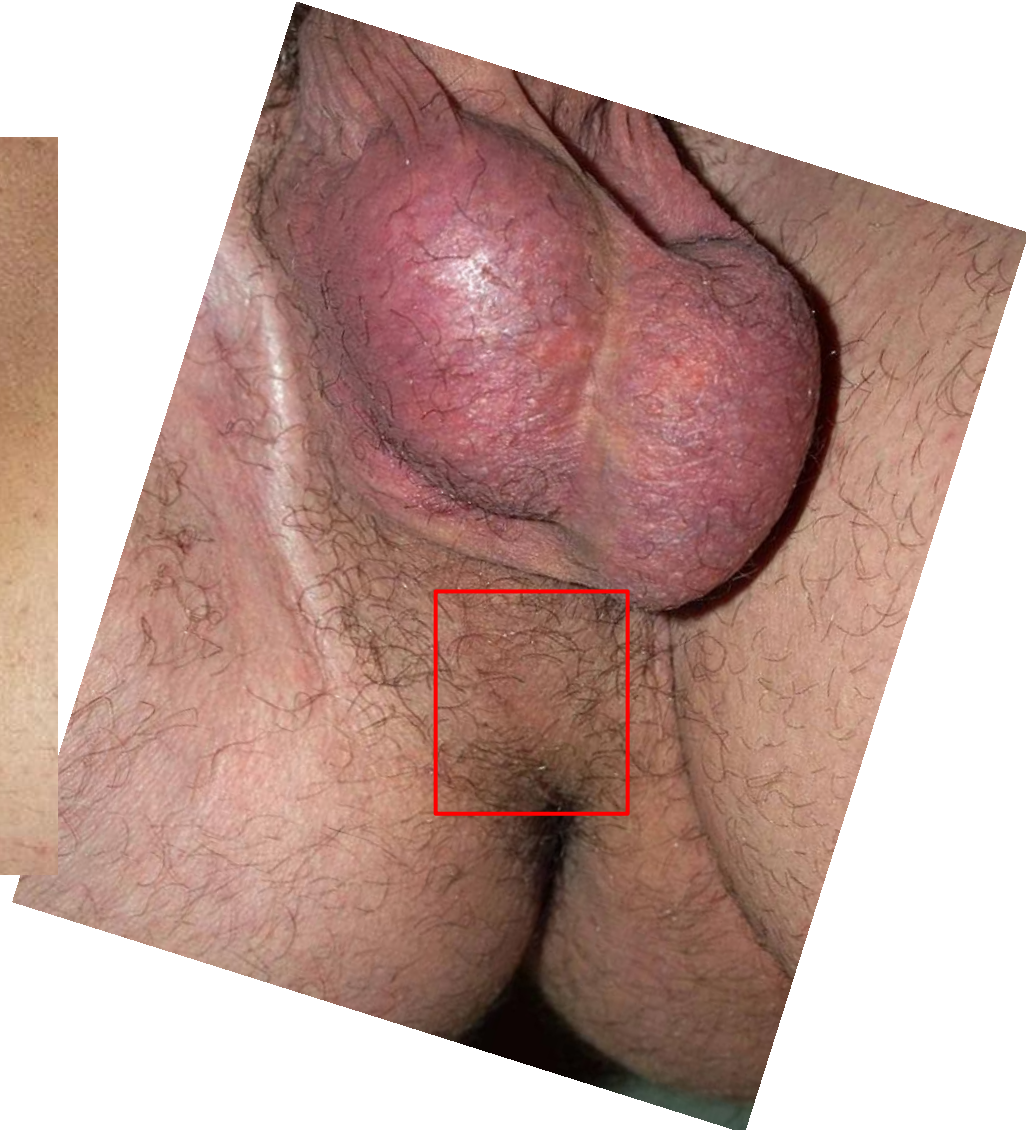


PERINEUM

Felületes régiók



NŐI ÉS FÉRFI PERINEUM



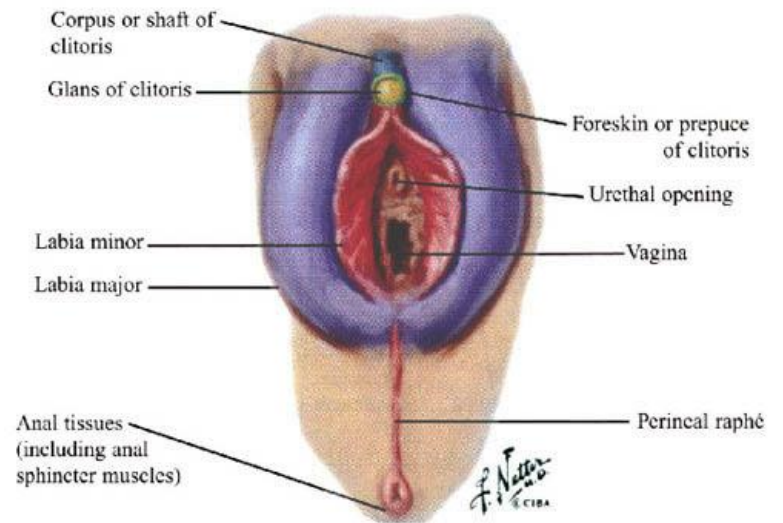
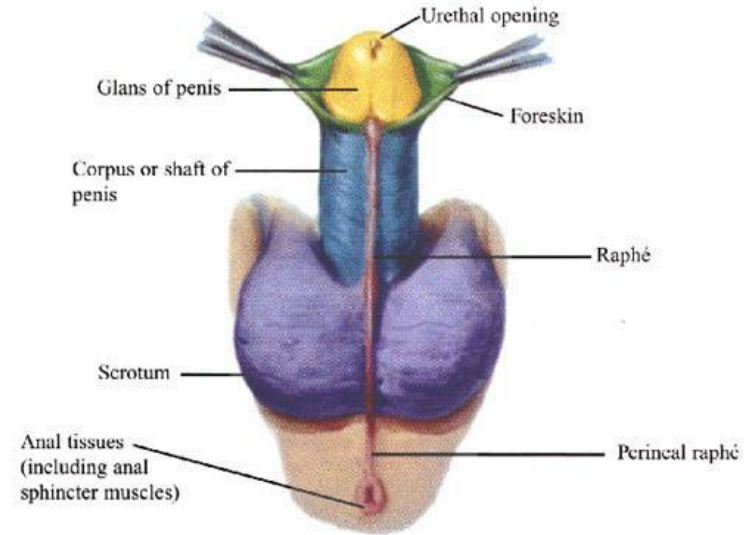
PERINEUM

Felületi topográfia



KÜLSŐ GENITÁLÉK

Homológ szervek



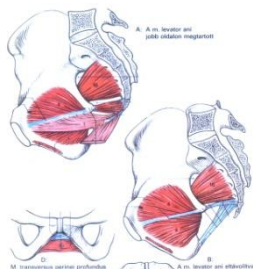
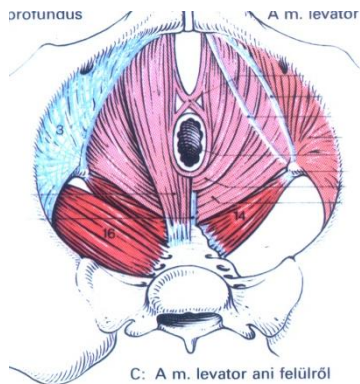
MEDENCEFENÉK IZMAI, RÉTEGEI

1. DIAPHRAGMA PELVIS

m levator ani + fasciae

1. (ant) pubococcygeus
2. pubovaginalis
3. puborectalis
4. (post) iliococcygeus
5. coccygeus (ischiococcygeus)

Sphincter ani externus

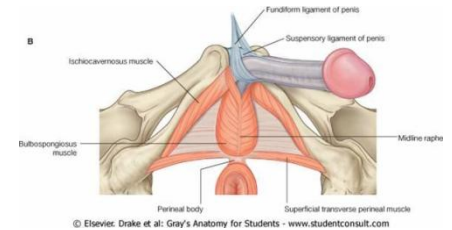
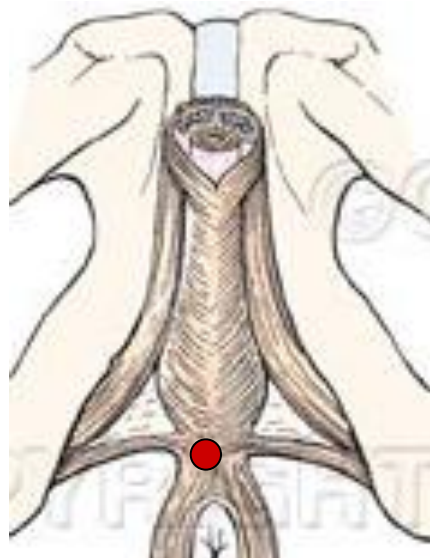


2. DIAPHRAGMA UROGENITALE

m transversus perinei prof + fasciae

1. sphincter urethrovaginalis
2. compressor urethrae
3. sphincter urethrae

**CENTRUM
TENDINEUM**



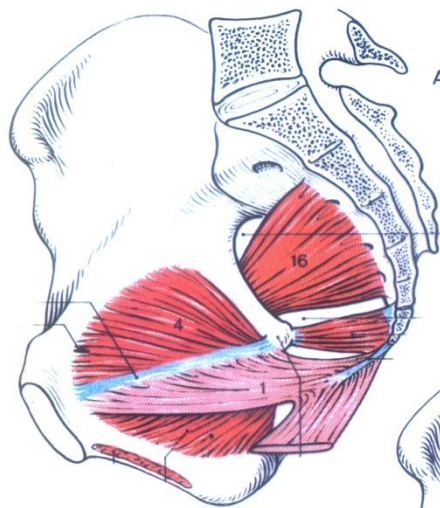
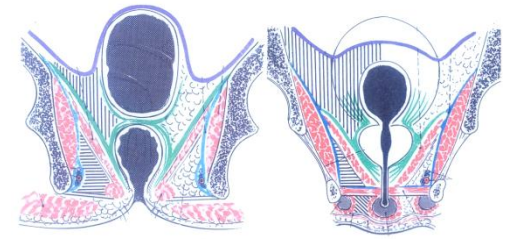
3. TRIGONUM UROGENITALE (FELE)

- *ischio-cavernosus*
- *bulbospongiosus*
- *transversus perinei superficialis*

*m. corrugator cutis ani
(simaizom)*

MEDENCEFENÉK RÉTEGEI, LEVATOR ANI EREDÉSEI/ RÉSZEI

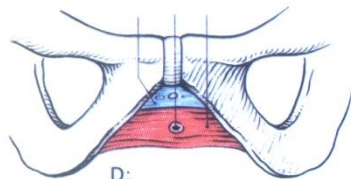
Hiatus urogenitalis – hiatus analis



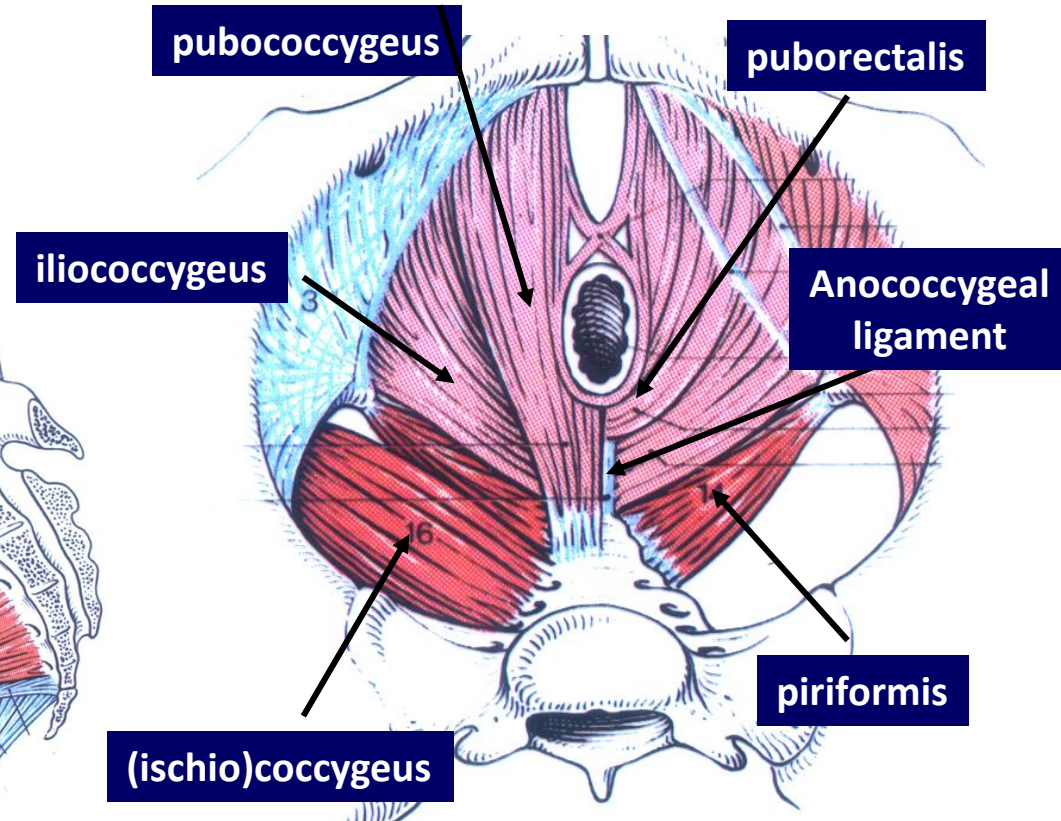
A: A m. levator ani
jobb oldalon megtartott



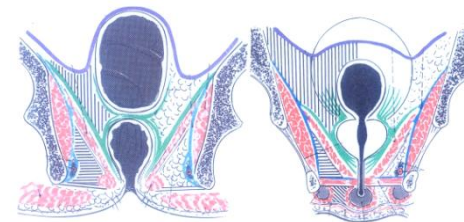
B:
A m. levator ani eltávolítva



D:
M. transversus perinei profundus



FASCIAE PERINEALES ÉS A GÁT TEREI



FASCIA PERINEI SUPERFICIALIS

LAMINA SUPERFICIALIS

vastag areolaris ktsz., előre a *tunica dartos* folytatása, a középvonalban összenő a bőrrel

LAMINA PROFUNDA (*fascia Colles*) vékony, rostgazdag ktsz-s membrán, folytatása előre a *tunica dartos* és a *fascia profunda penis, fascia spermatica*, az összes izmot takarja. középvonalban a felületes lemezzel nő össze.

FASCIA PERINEI PROFUNDA (LIGAMENTUM TRIANGULARE)

LAMINA INFERIOR

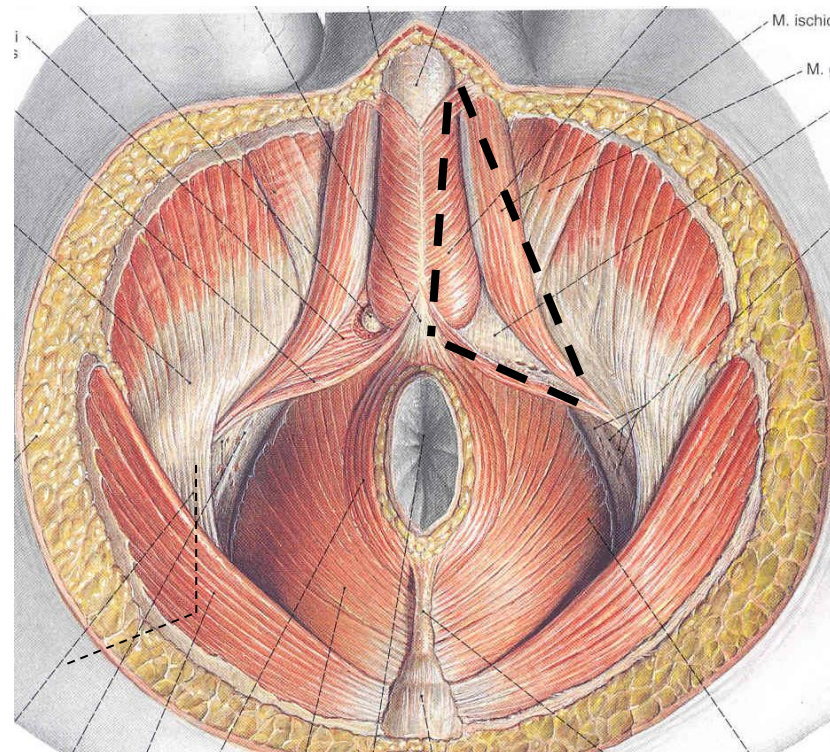
előre a lig. arcuatum felé nyitott, hátrafelé a centrum tendineummal nő össze, a m. transversus perinei profundust takarja

LAMINA SUPERIOR

az obturator fascia folytatása, elől az arcus pubicusához tapad, hátrafelé összeolvad a mély lemezzel (*lig. transversum pelvis*)

„TRIGONUM UROGENITALE” FELE

- *ischiocavernosus*
- *bulbospongiosus*
- *transversus perinei superficialis*



FOSSA ISCHIORECTALIS

FALAI

ELŐL (*recessus anterior*)

MED: m. levator ani

LAT: m. obturator internus

INF: m. transversus perinei profundus

HÁTUL

MED: fascia analis, m. sphincter ani ext.

LAT: tuber ischiadicum, fascia obturatoria

ANT: fascia perinei superfic. et profunda

POST: lig. sacrotuberale, m. gluteus maximus

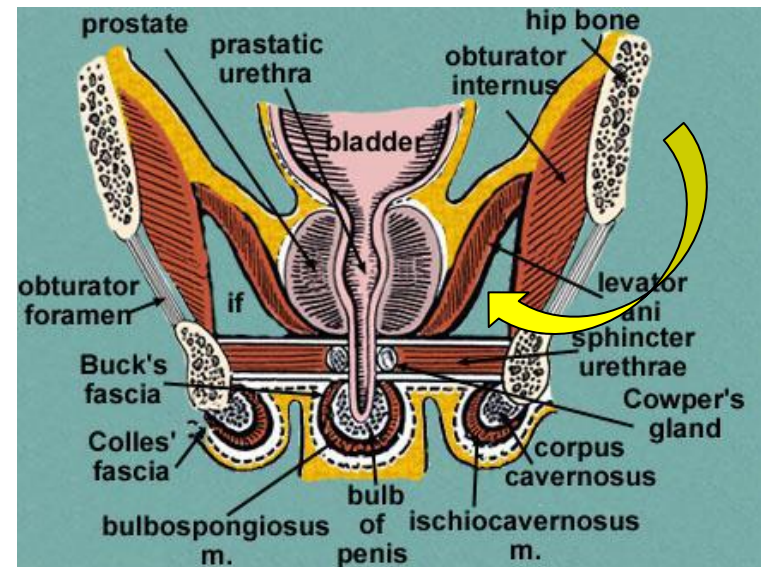
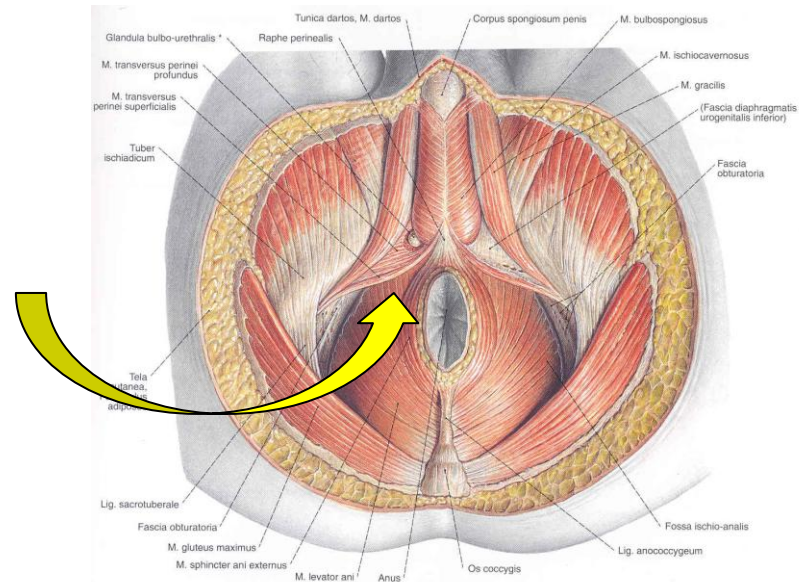
TARTALMA, KÉPLETEI

zsíros, laza rostos kötőszövet, benne

aa., vv., nn. hemorrhoidales inferiores

plexus pudendus bőrágai

aa., vv., nn. scrotales (labiales) posteriores



Alcock-csatorna: m. obturator int. fasciakettőzete
(nem azonos a fossa ischio-rectalisszal!!!)

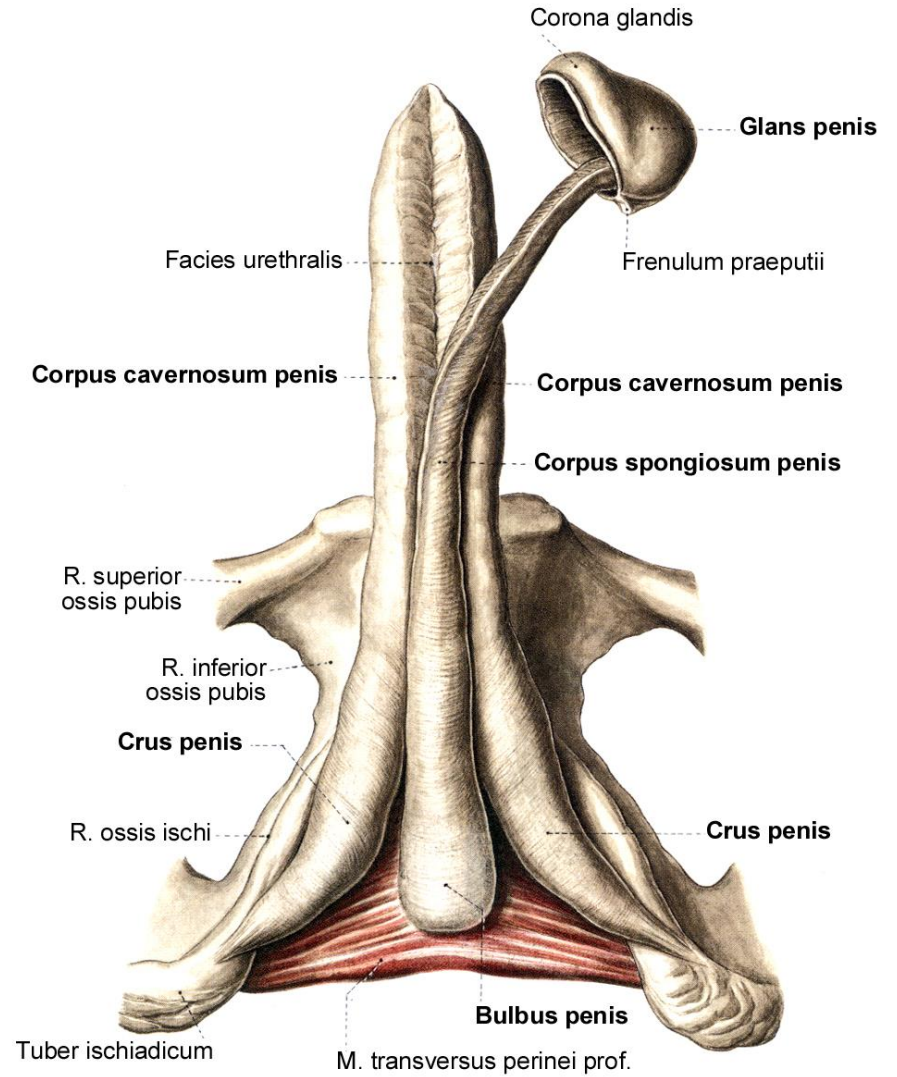
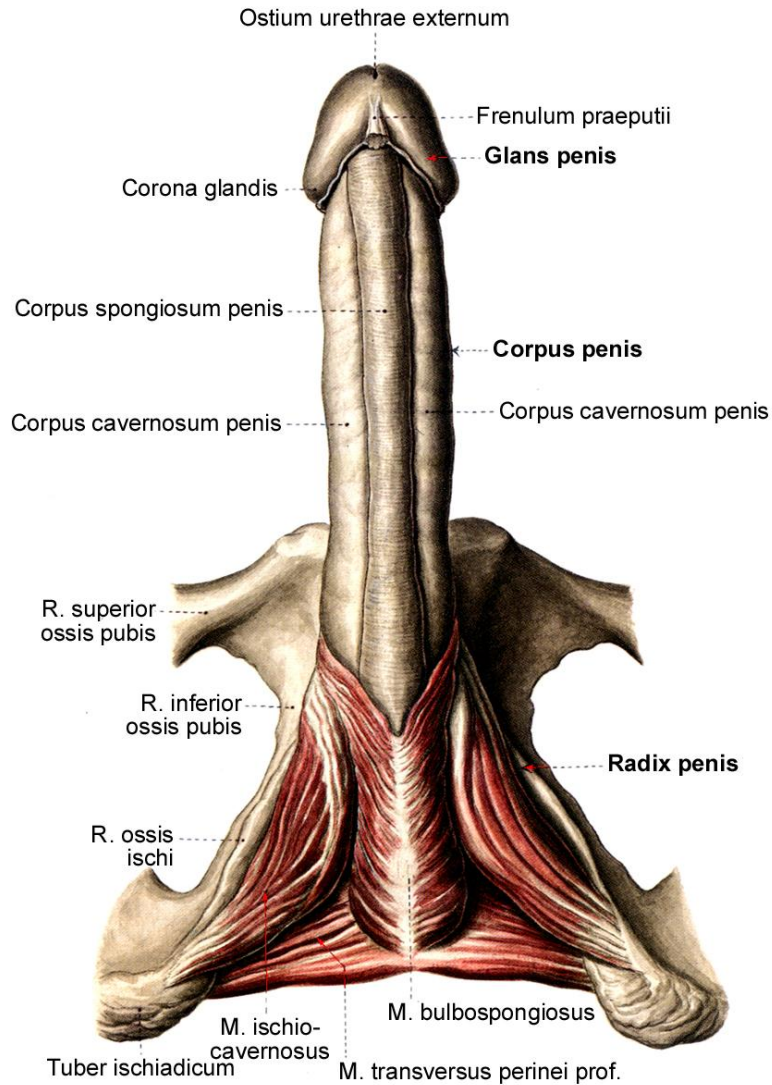
KÉPLETEI

n. pudendus

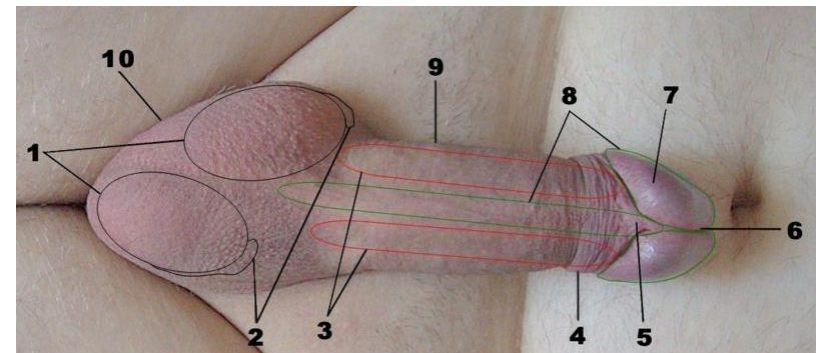
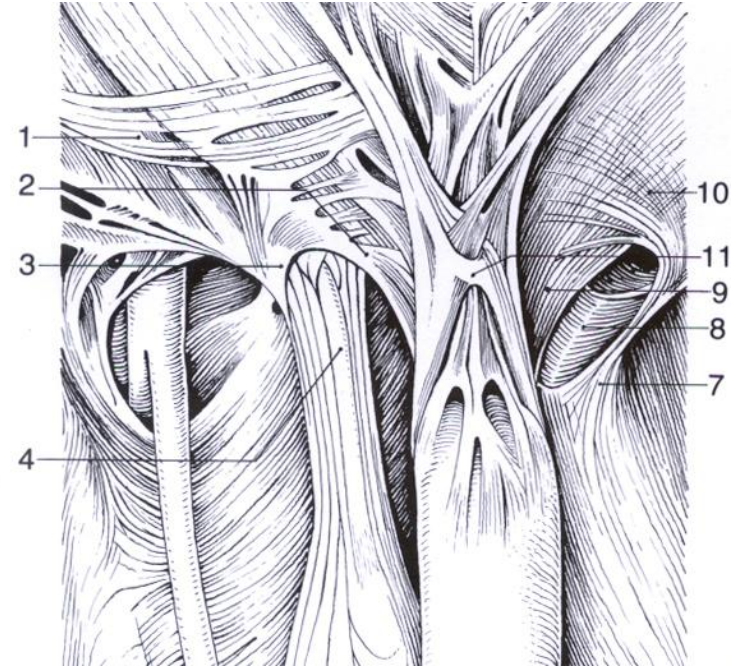
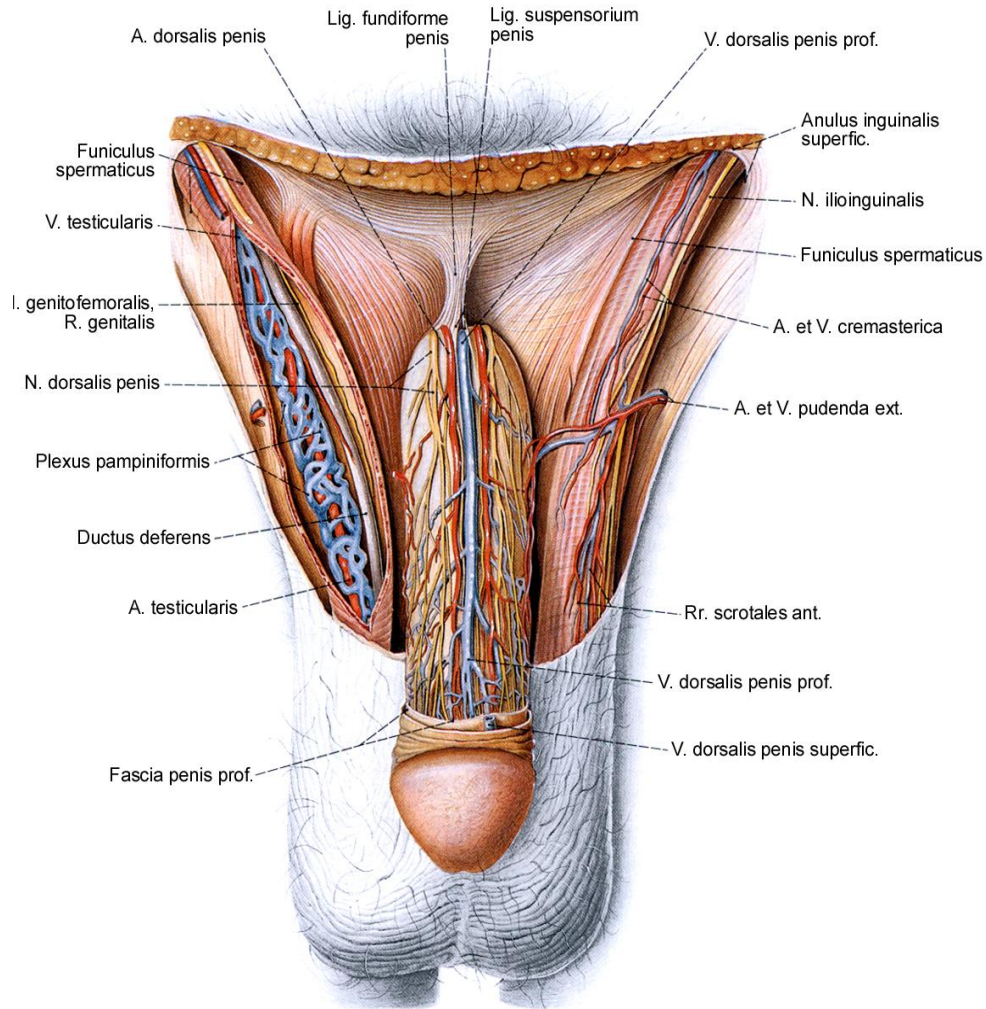
a. pudenda interna

v. pudenda interna

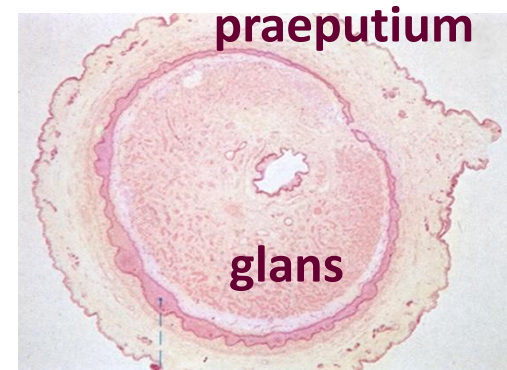
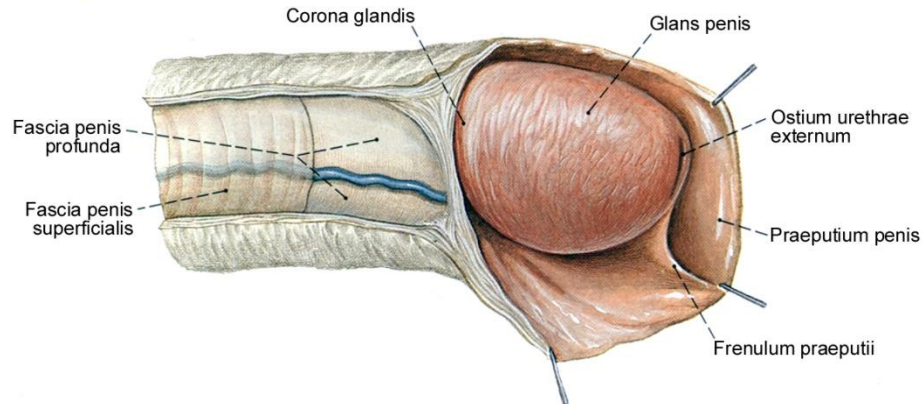
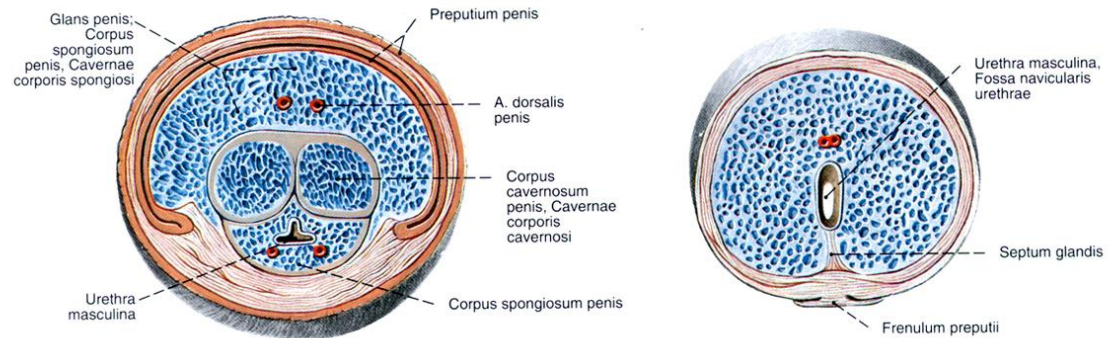
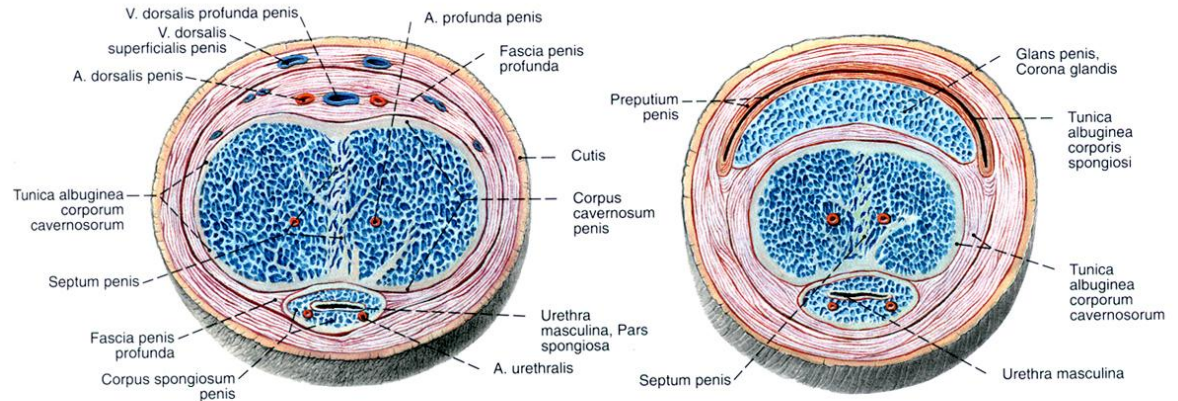
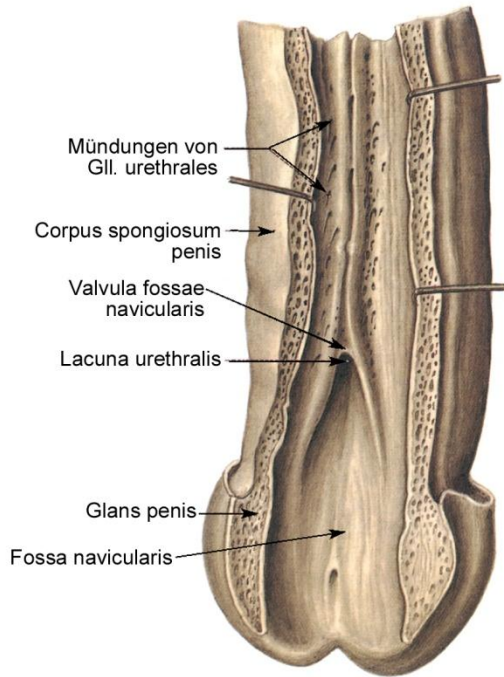
KÜLSŐ NEMI SZERVEK - PENIS



KÜLSŐ NEMI SZERVEK - PENIS

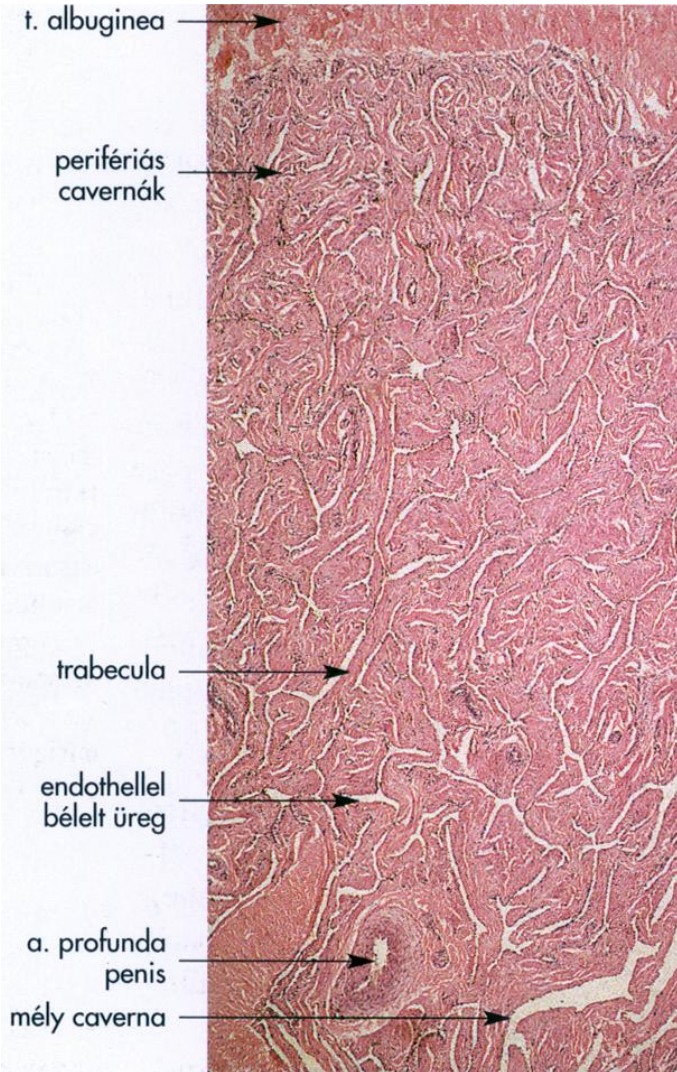


KÜLSŐ NEMI SZERVEK - PENIS

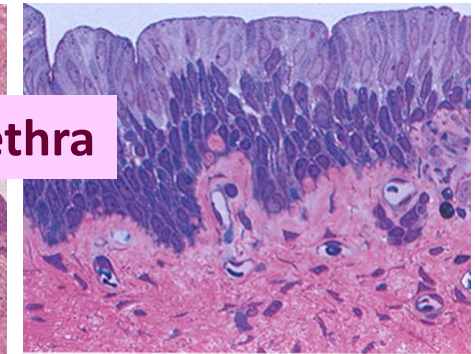
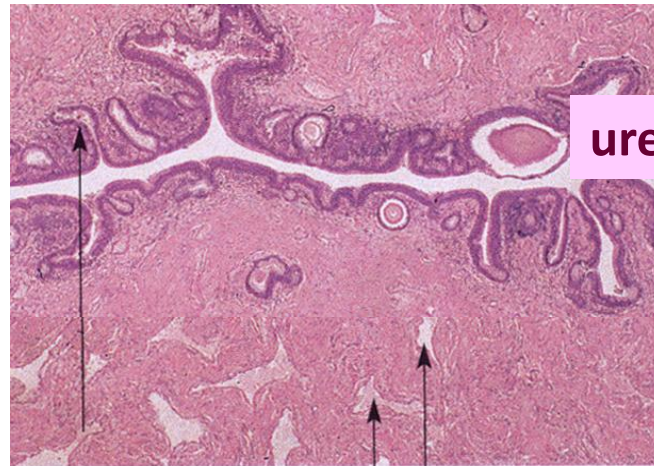


KÜLSŐ NEMI SZERVEK - PENIS

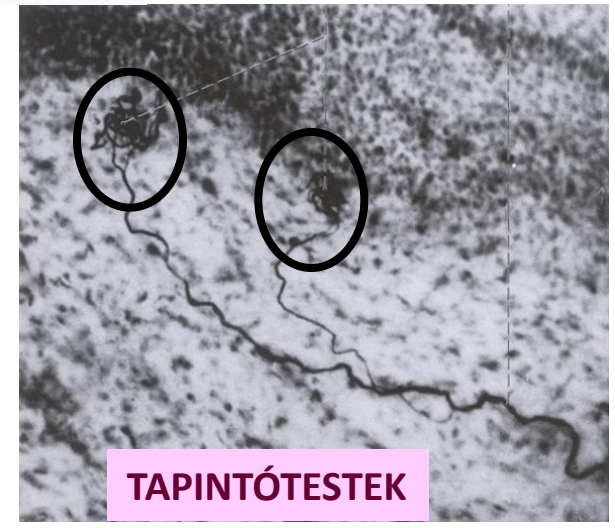
CORPUS CAVERNOSUM



CORPUS SPONGIOSUM

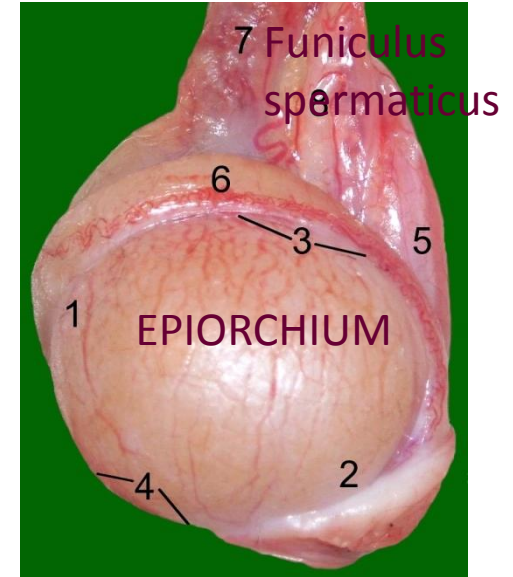
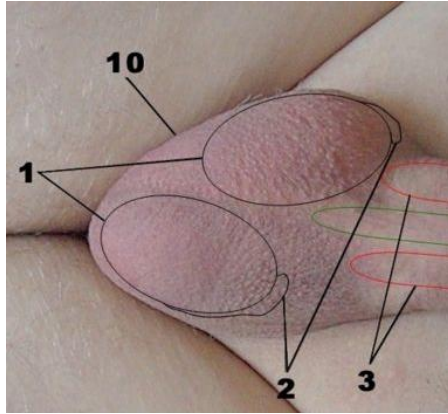
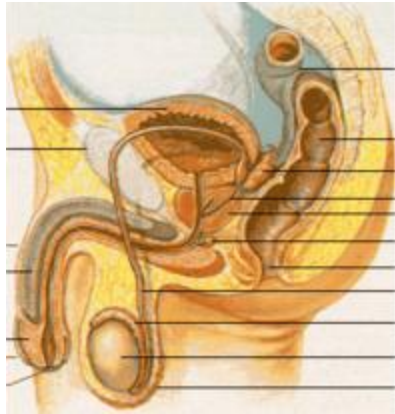


lacuna urethralis
endothelleg bélelt üregek a corpus spongiosumban

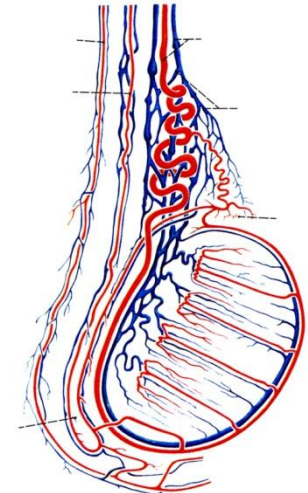
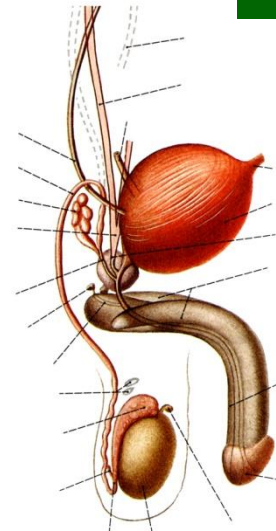
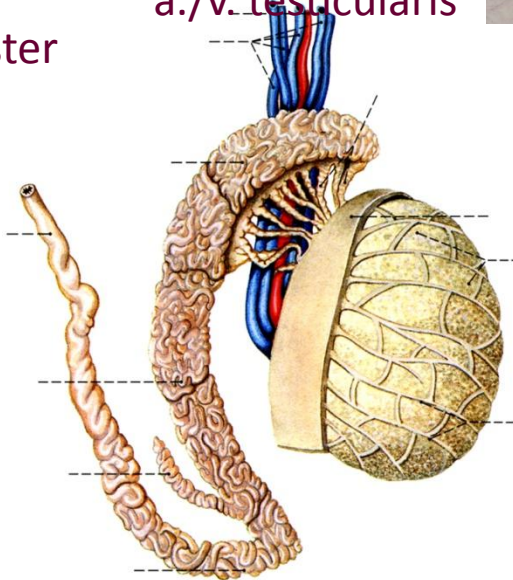
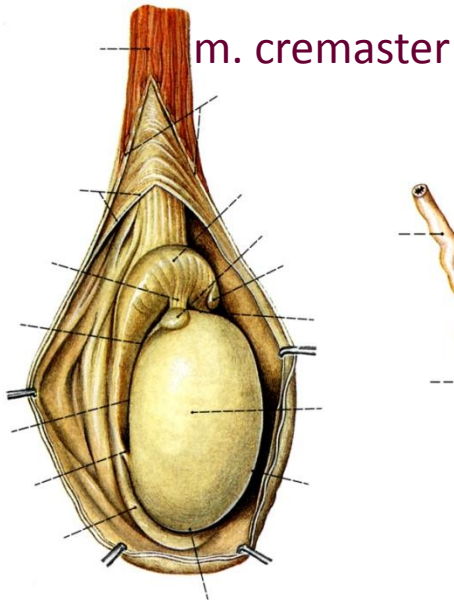


KÜLSŐ NEMI SZERVEK

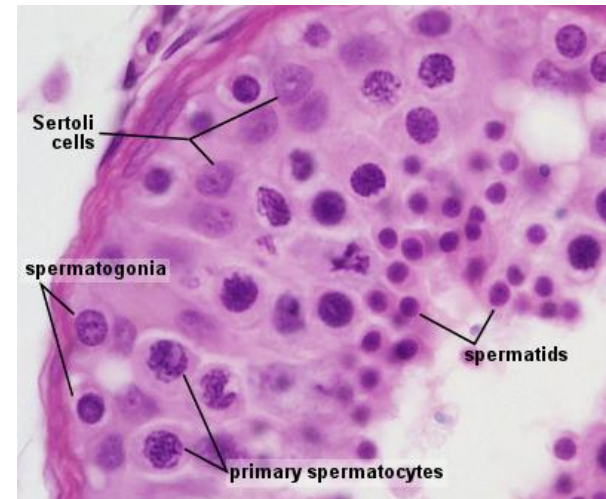
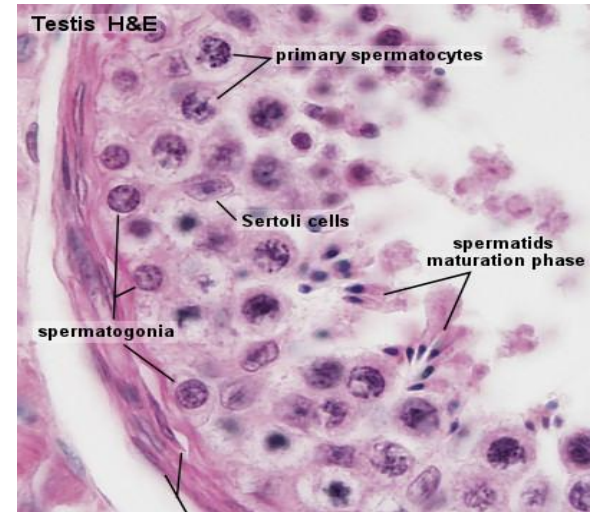
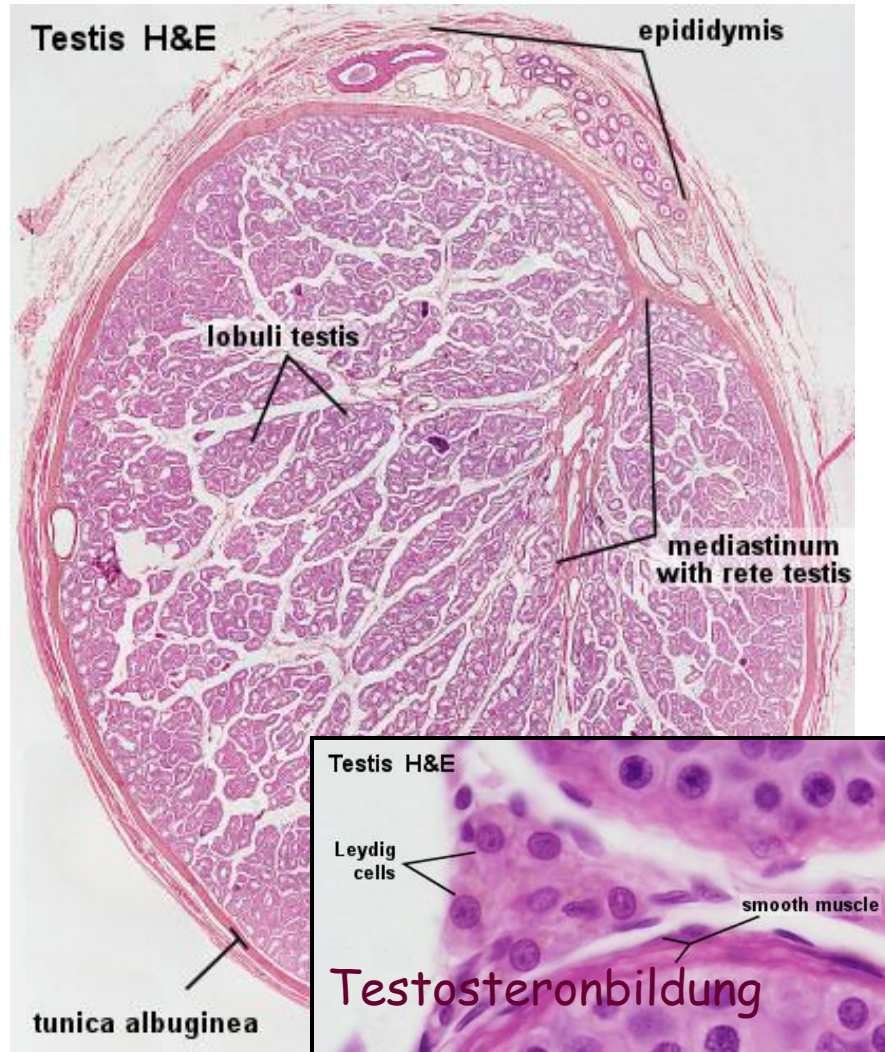
SCROTUM, TESTES, EPIDYDIMIS



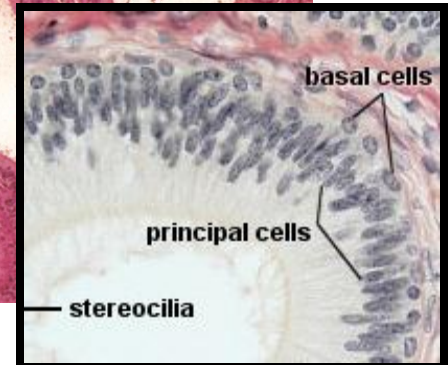
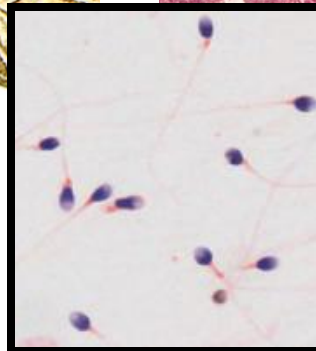
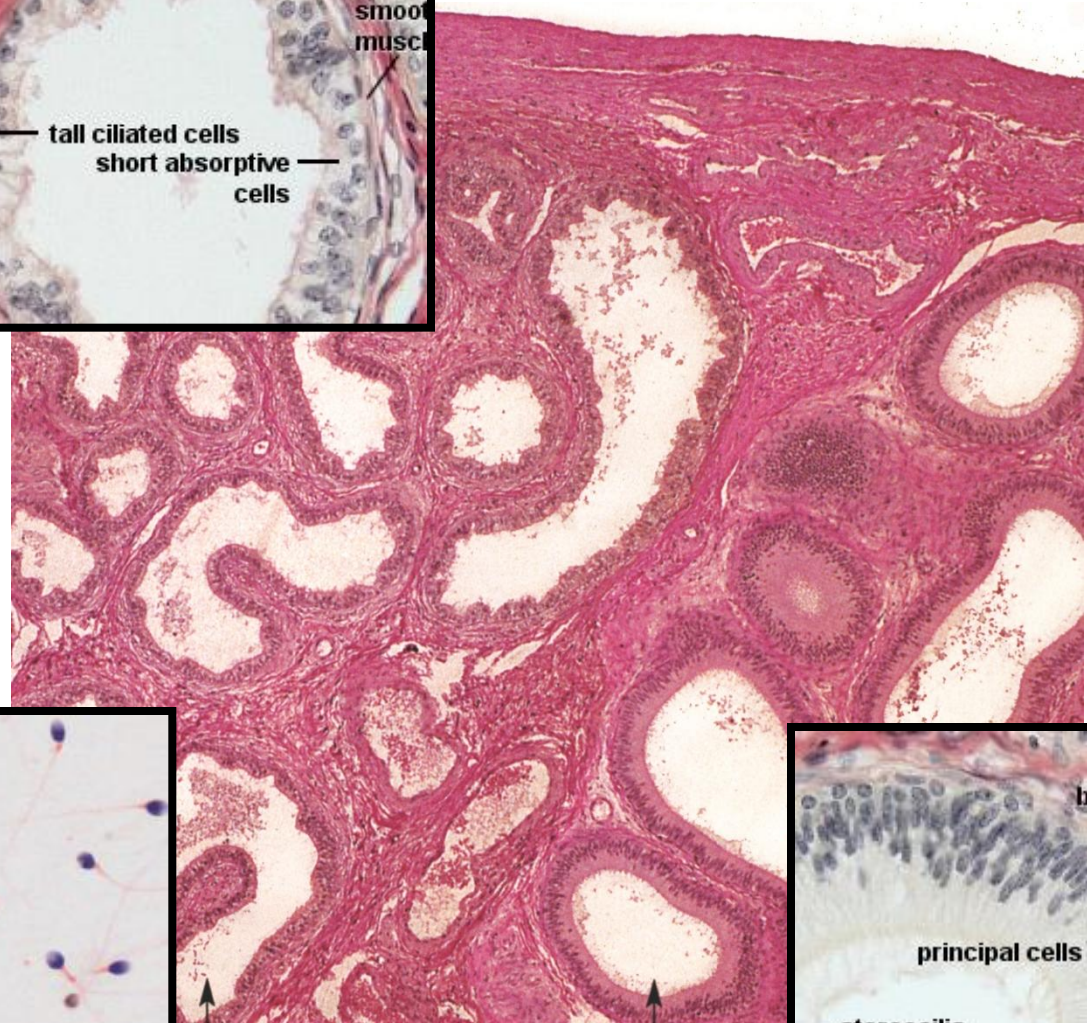
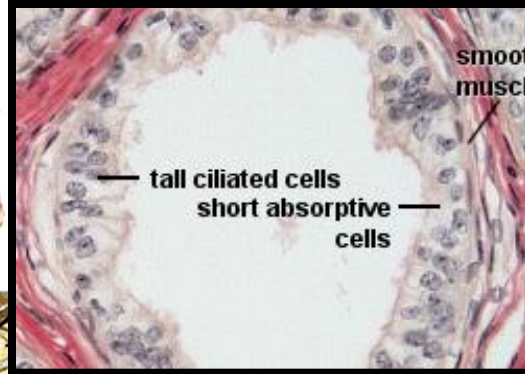
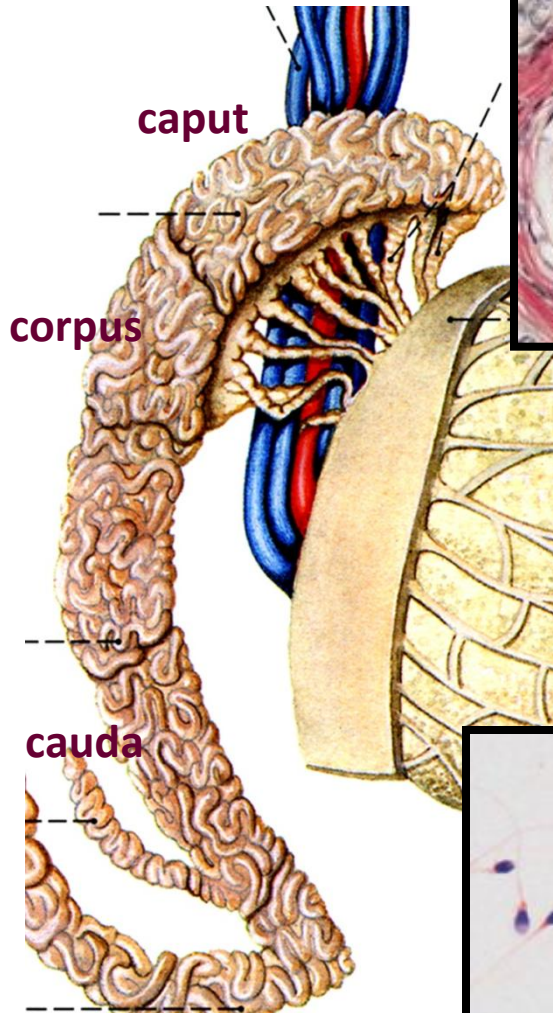
a./v. testicularis



SPERMATOGENESIS, SPERMIOGENESIS



EPIDYDIMIS SPERMIUMOK ÉRÉSE



SCROTUM RÉTEGEI

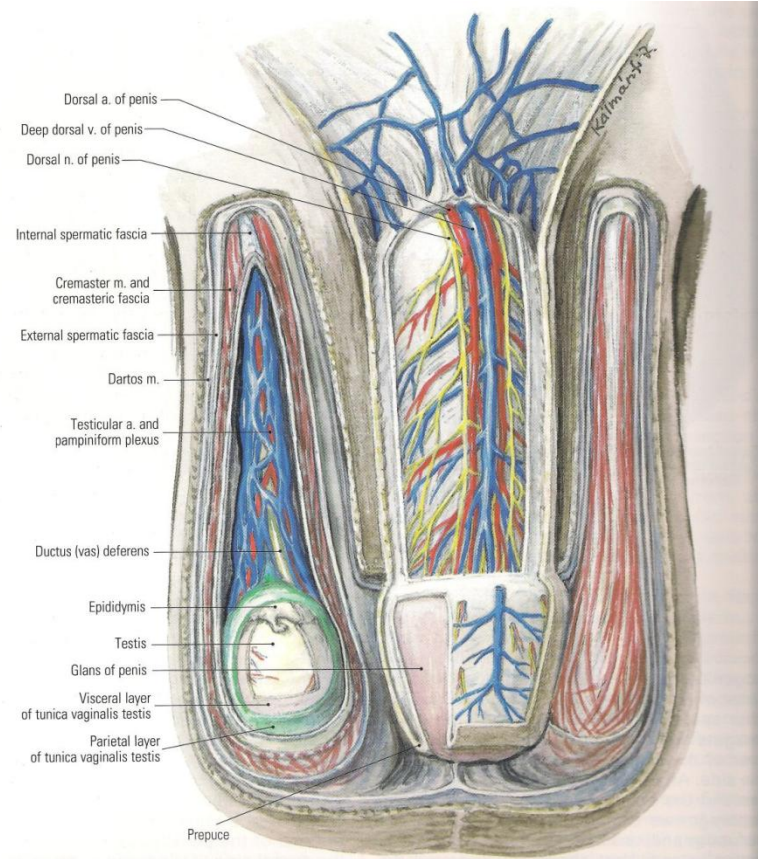
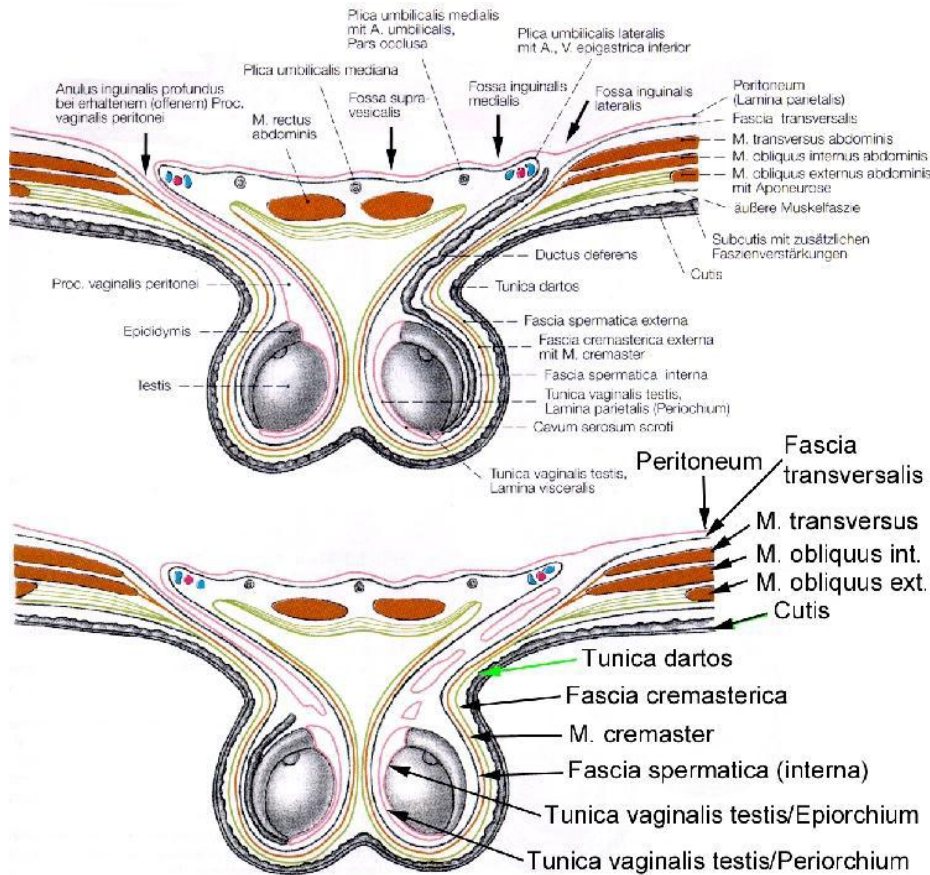
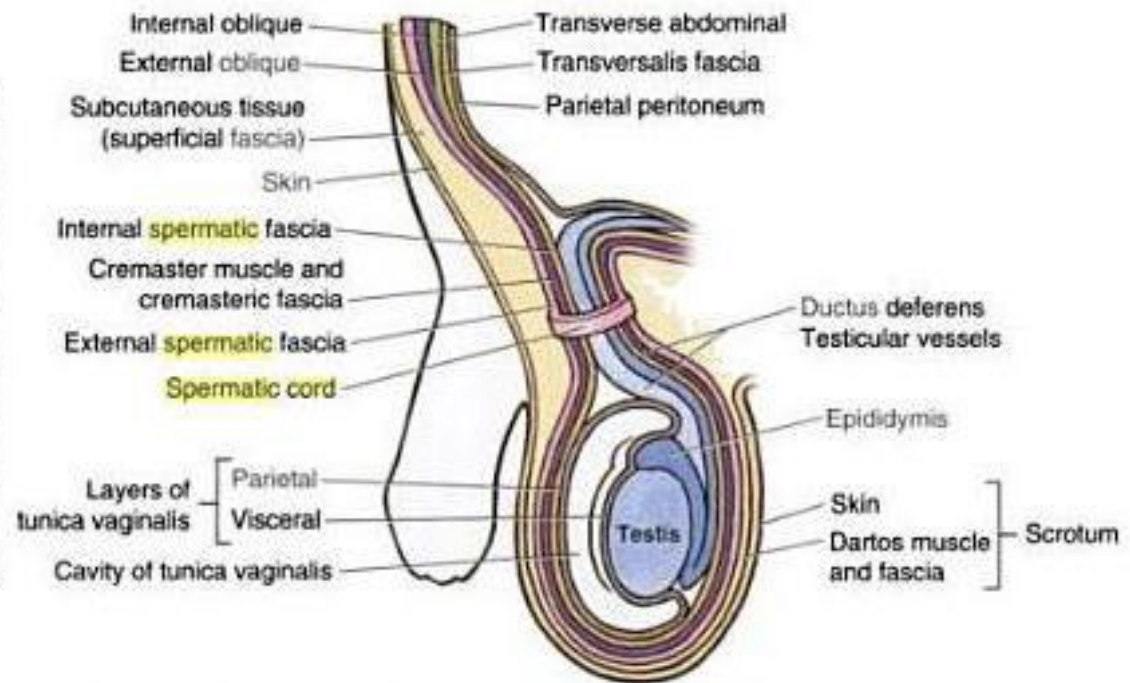


Figure 84. Layers of the scrotum
Penis

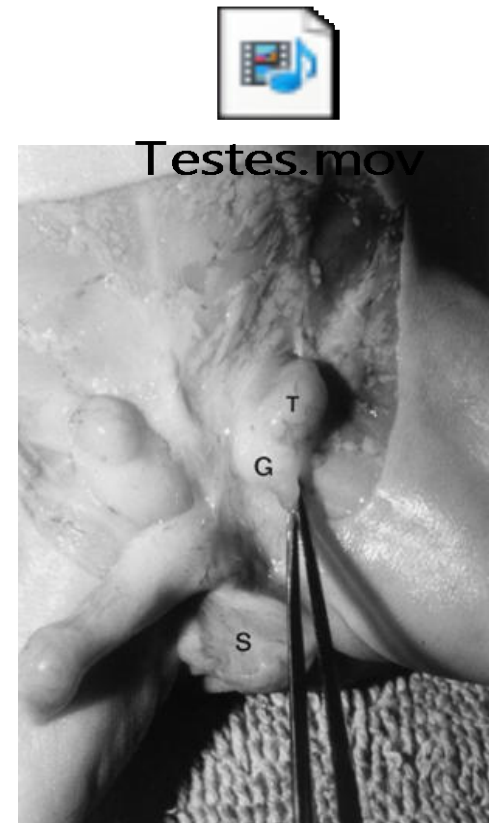
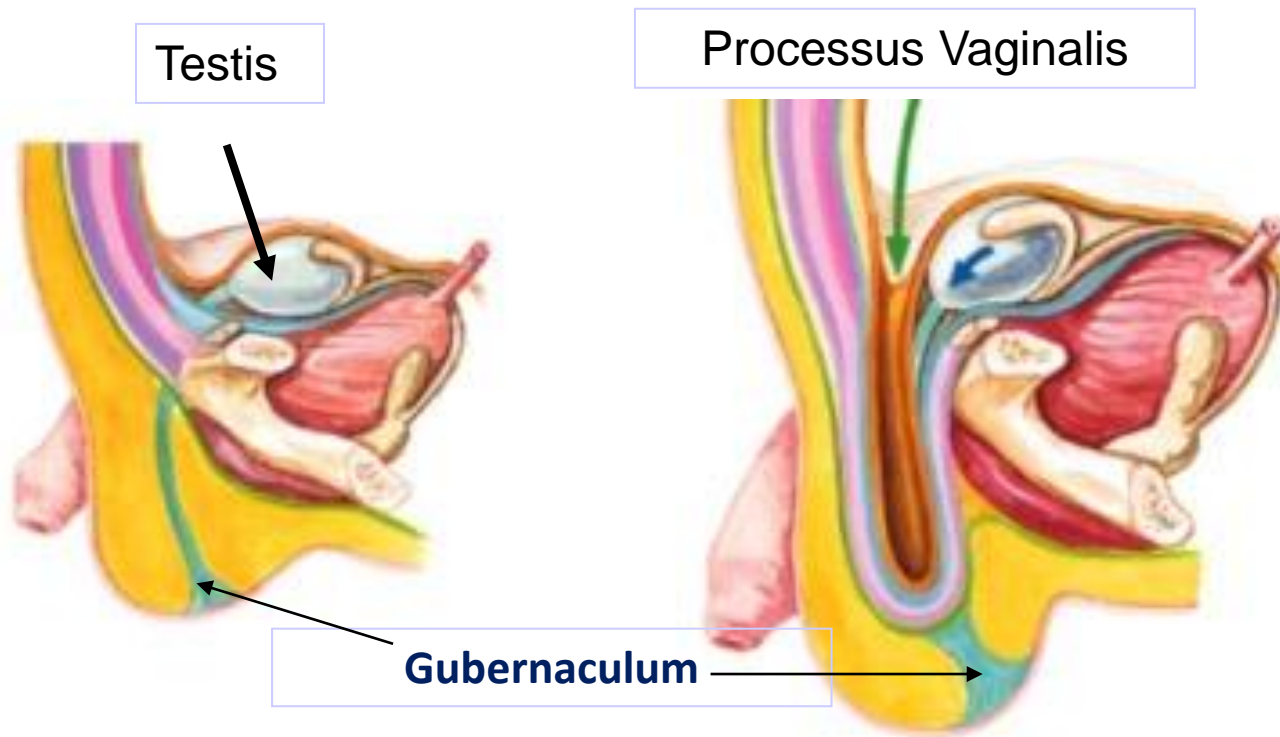
Table 2.4 Corresponding Layers of Anterior Abdominal Wall, Spermatic Cord, and Scrotum

| Layers | |
|--------|---|
| | External oblique External spermatic fascia |
| | Internal oblique Cremaster muscle & cremasteric fascia |
| | Transverse abdominal |
| | Transversalis fascia Internal spermatic fascia |
| | Parietal peritoneum Tunica vaginalis (parietal and visceral layers) |



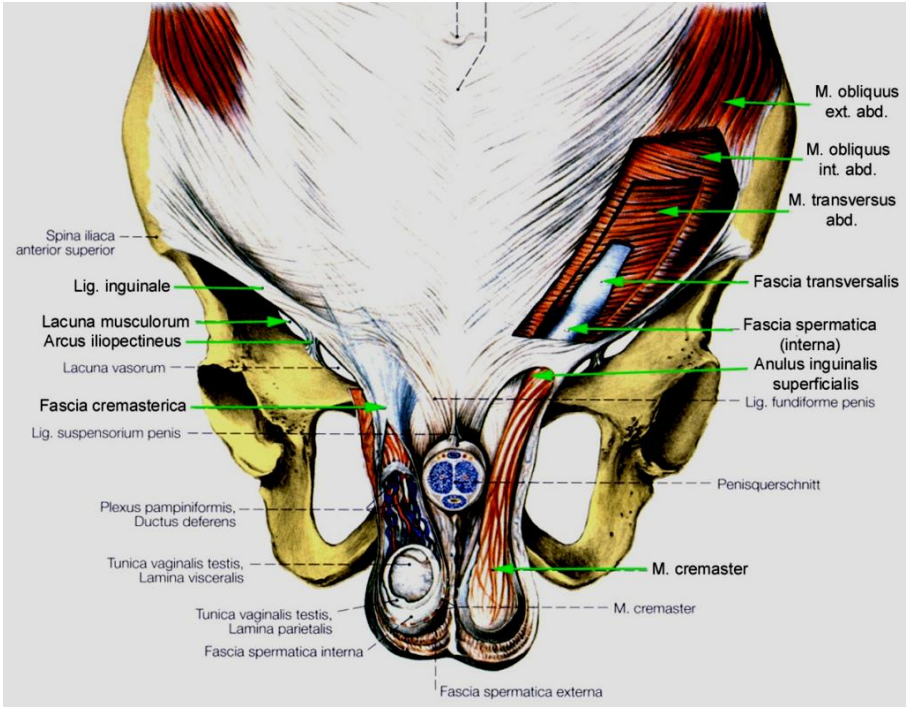
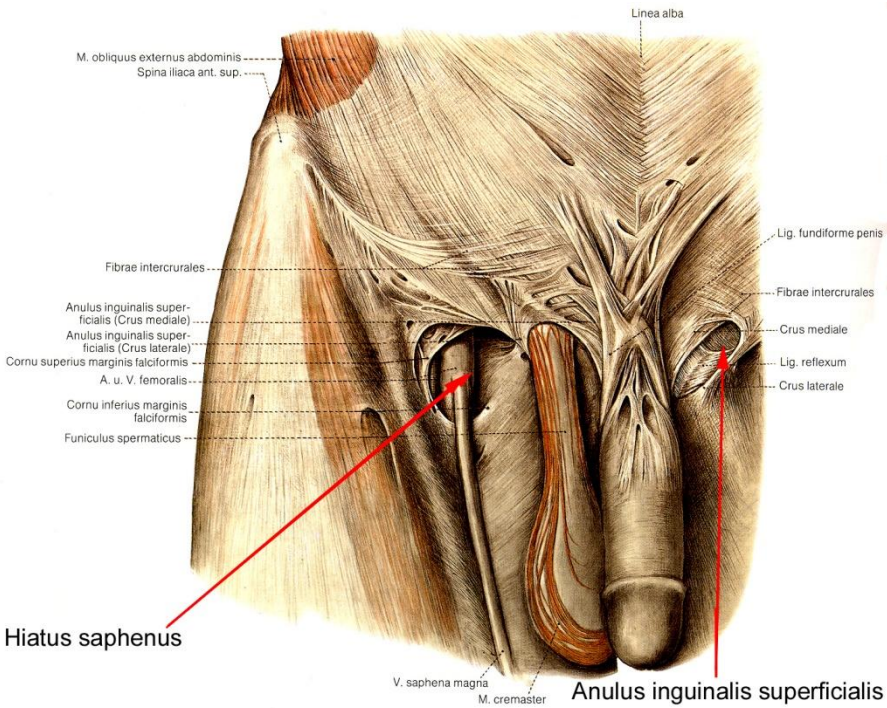
| Layers of the Anterior Abdominal Wall | Scrotum and Covering of the Testis | Coverings of the Spermatic Cord |
|---|---|---|
| Skin | Skin | Skin continuous with scrotum (and scrotal septum) |
| Subcutaneous tissue (superficial fascia) | Subcutaneous tissue (dartos fascia) and dartos muscle | |
| External oblique aponeurosis or muscle | External spermatic fascia | External spermatic fascia |
| Internal oblique muscle | Cremaster muscle | Cremaster muscle |
| Fascia of both superficial and deep surfaces of internal oblique muscle | Cremasteric fascia | Cremasteric fascia |
| Transverse abdominal muscle | | |
| Transversalis fascia | Internal spermatic fascia | Internal spermatic fascia |
| Extraperitoneal fat | | |
| Peritoneum | Tunica vaginalis (parietal and visceral layers) | Vestige of processus vaginalis |

HERÉK LESZÁLLÁSA, SCROTUM, TUNICA VAGINALIS TESTIS ÉS FUNICULUS SPERMATICUS FEJLŐDÉSE

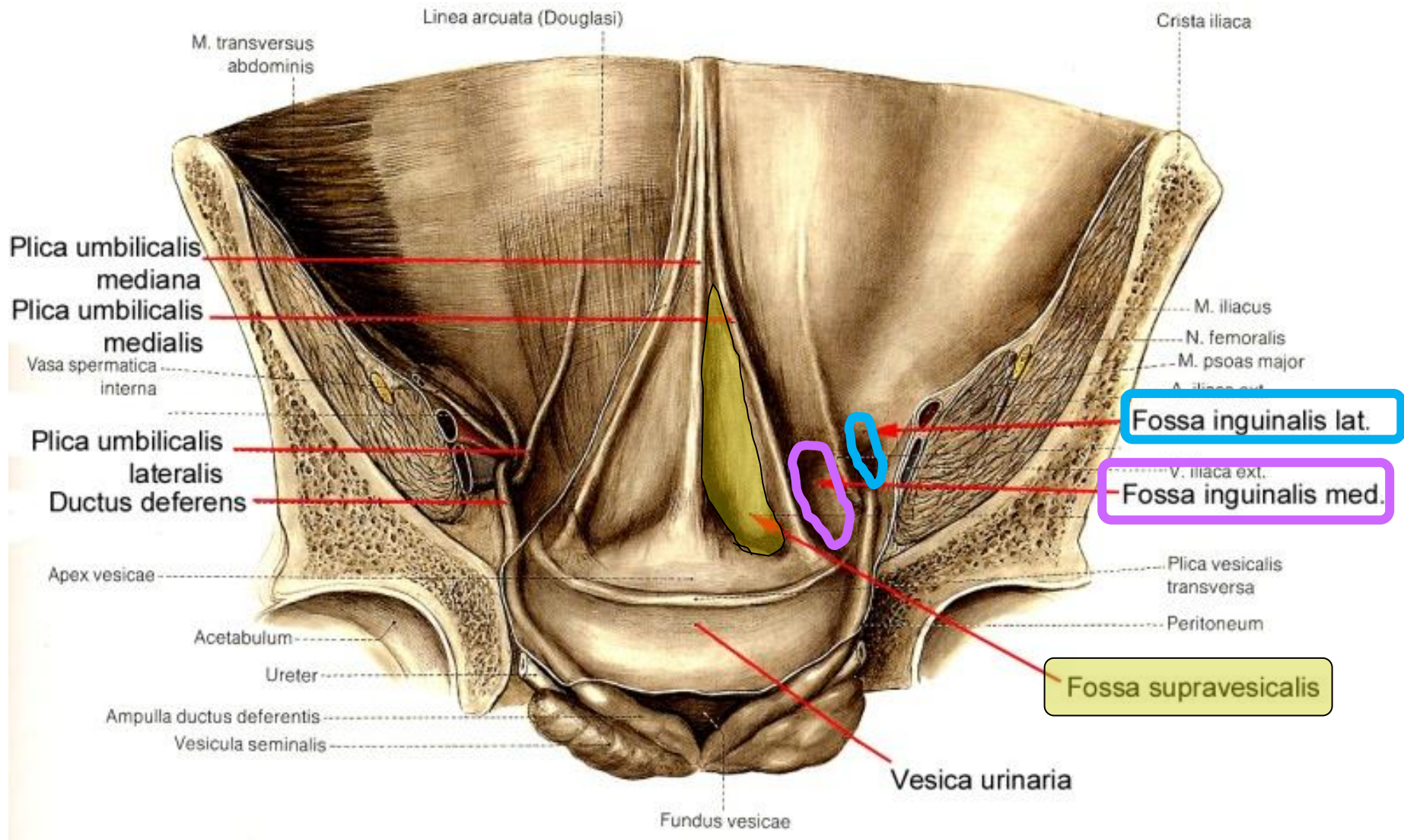


7. Héttől van jelen (plica gonadalis „maradványa”)
2. Hónapra a herék a canalis inginalis közelébe érnek
3. Hónapban belépnek a canalis inguinalisba
- 3-7. hónapig a csatornában „állnak” a bejáratánál, proc vaginalis elongálódik, gubernaculum rövidül („lehúzza a heréket”), majd a 7-9 hónapig elérik az alsó kijáratot
9. hónapra a scrotumban kell lenniük (érettségi jel)

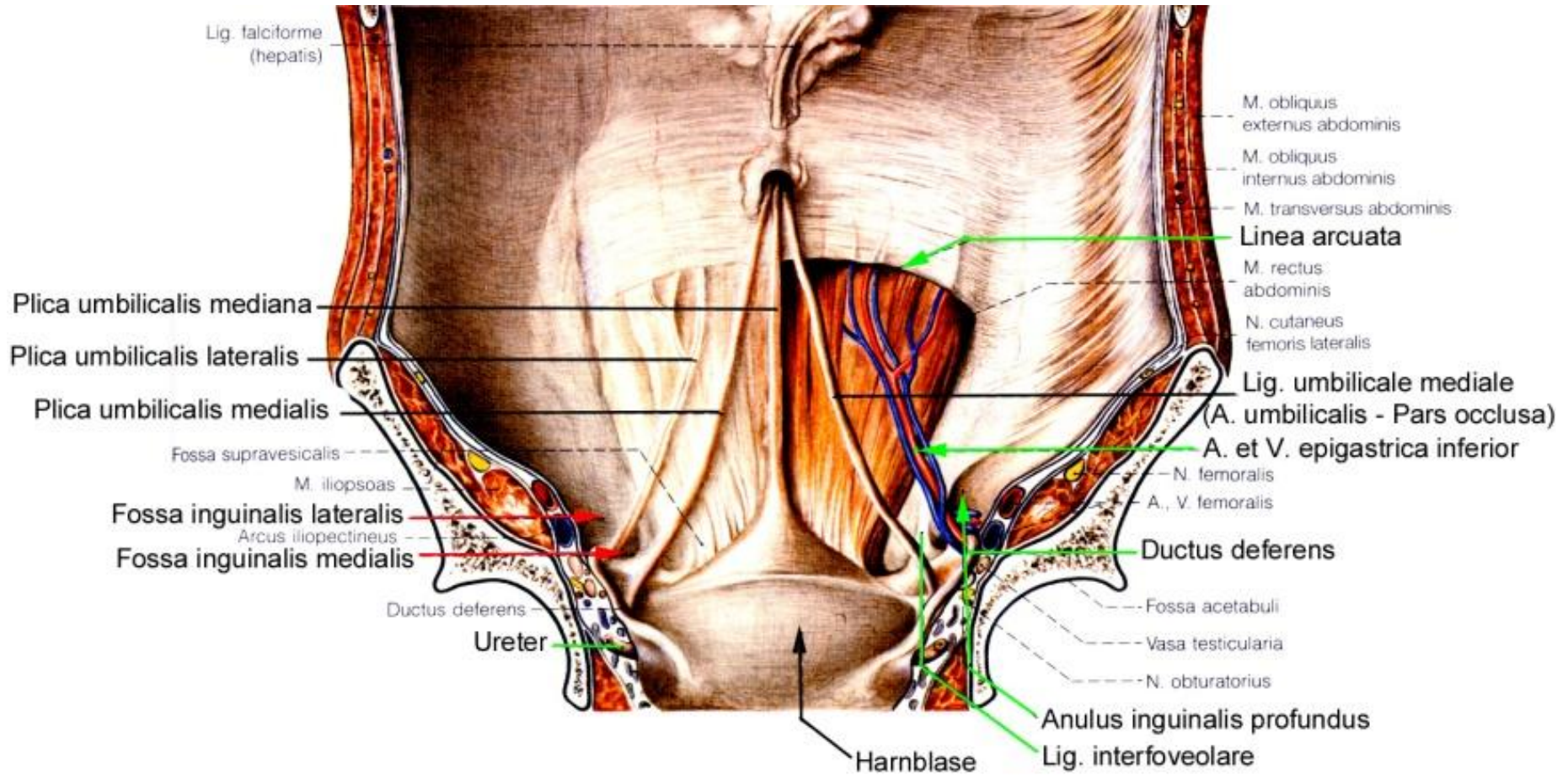
CANALIS INGUINALIS



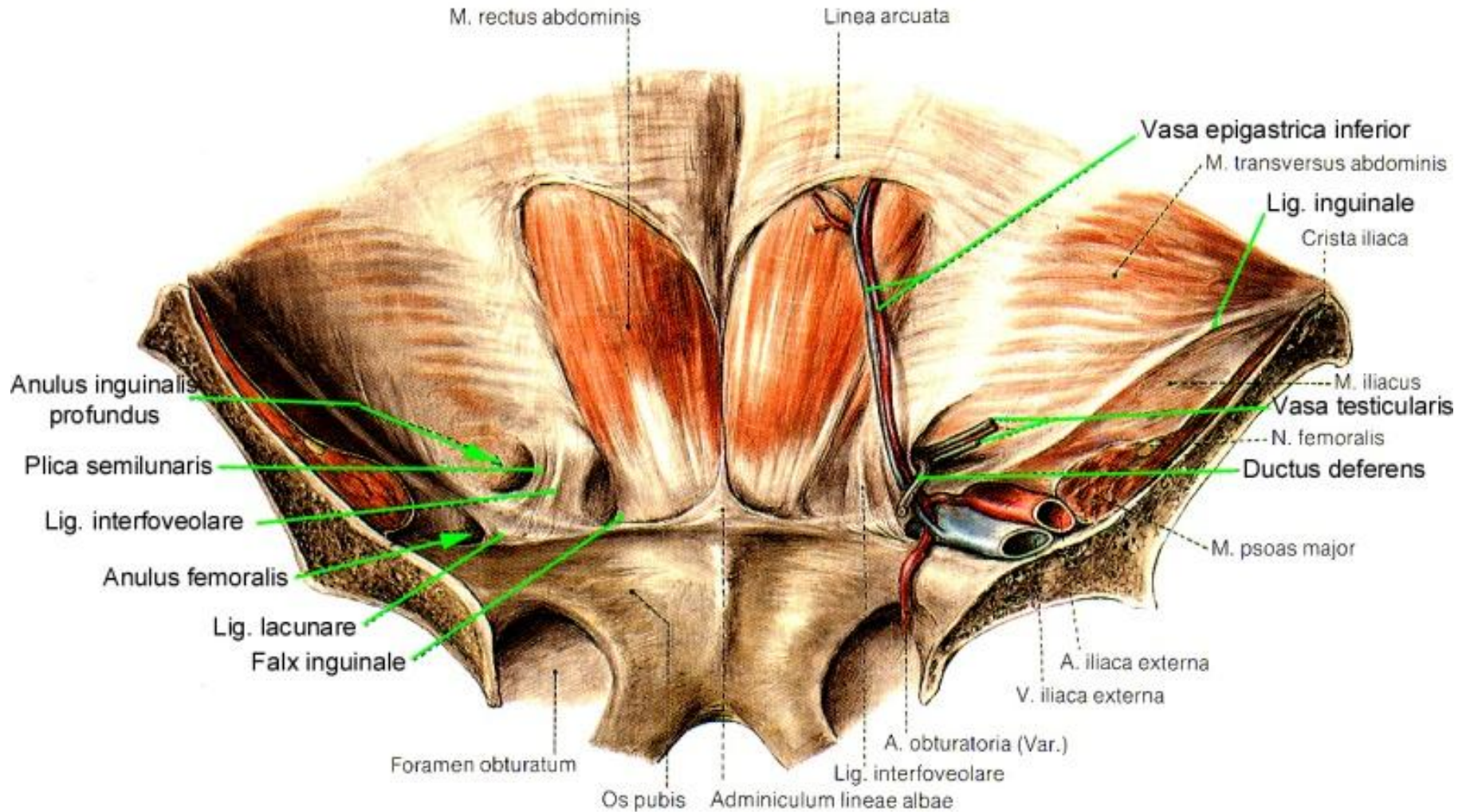
PLICAE UMBILICALES, FOSSAE INGUINALES



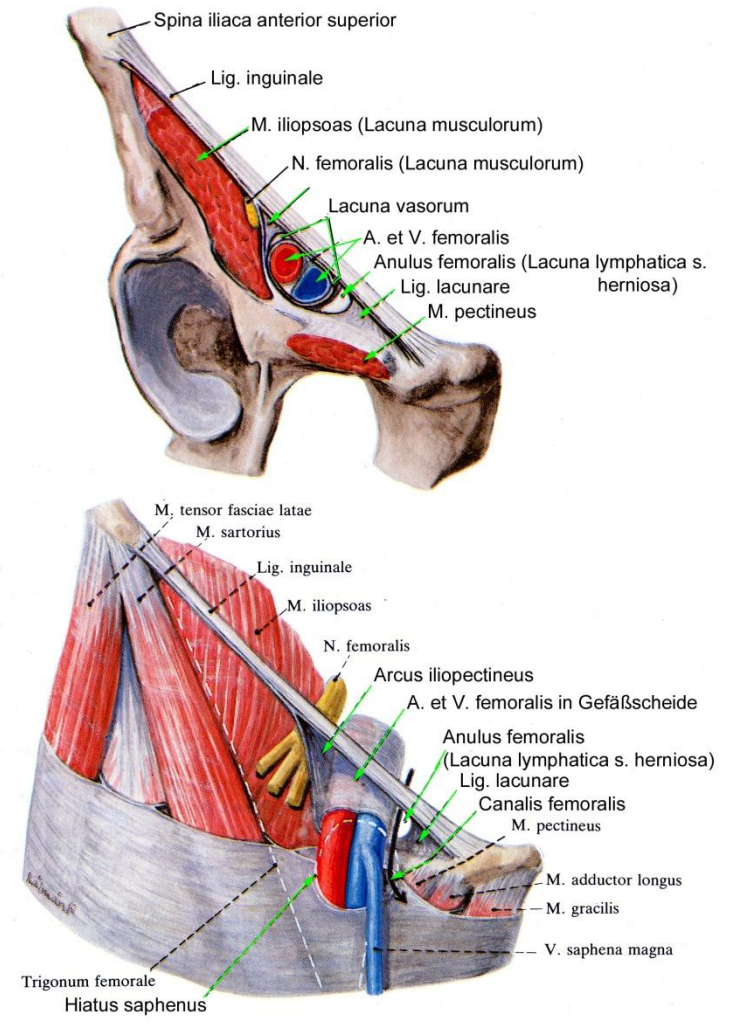
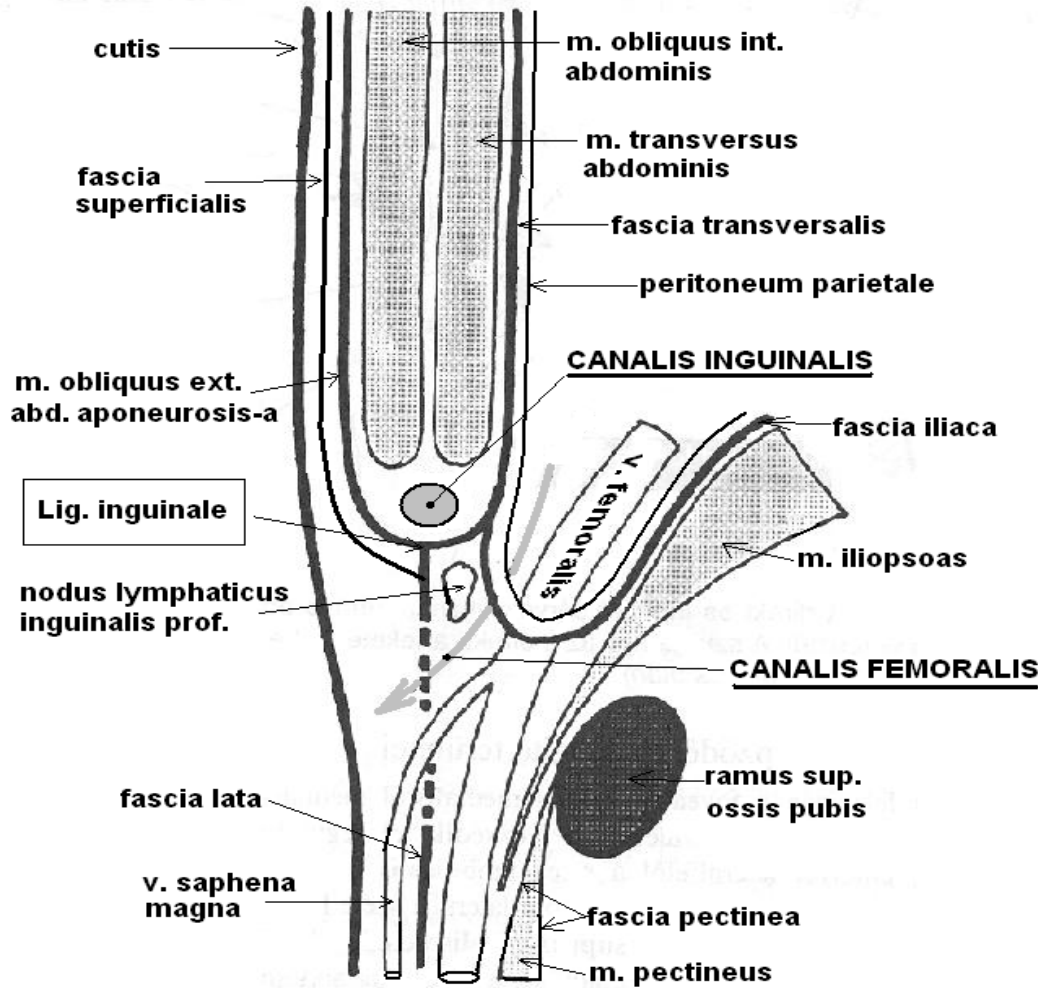
PLICAE UMBILICALES TARTALMA



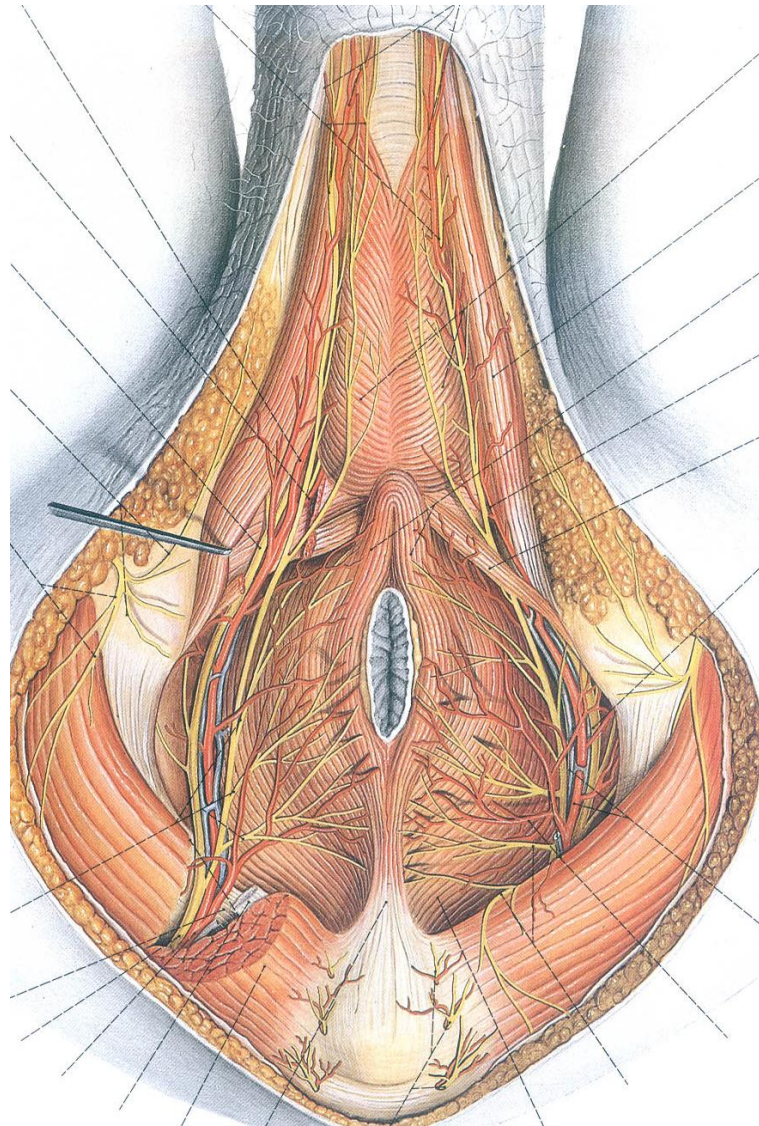
ANULI INGUINALES



SÉRVCSATORNÁK

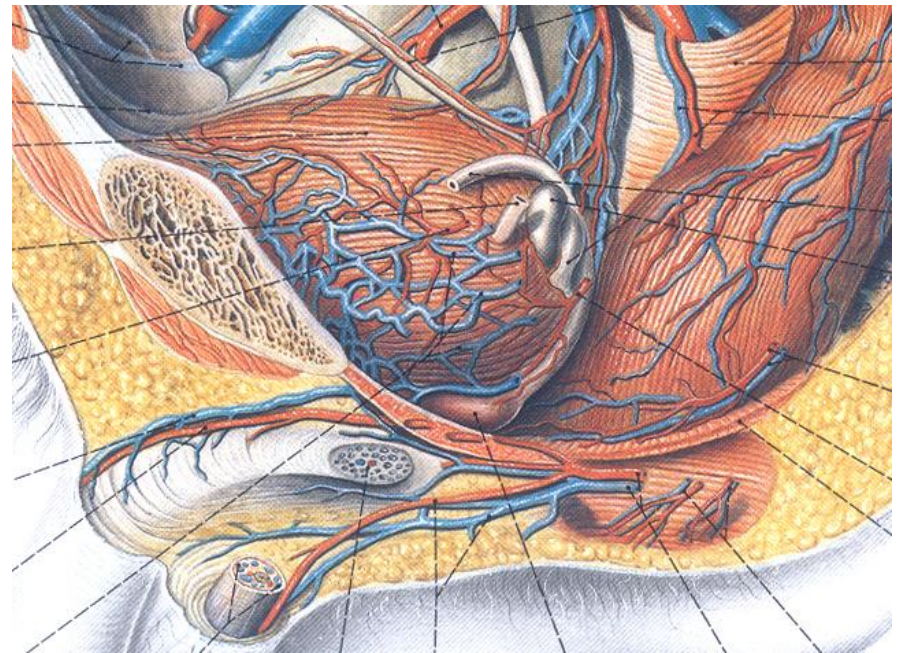


GÁTTÁJÉK ÉRELLÁTÁSA ÉS BEIDEGZÉSE



a./v. pudenda interna ágai

n. pudendus ágai

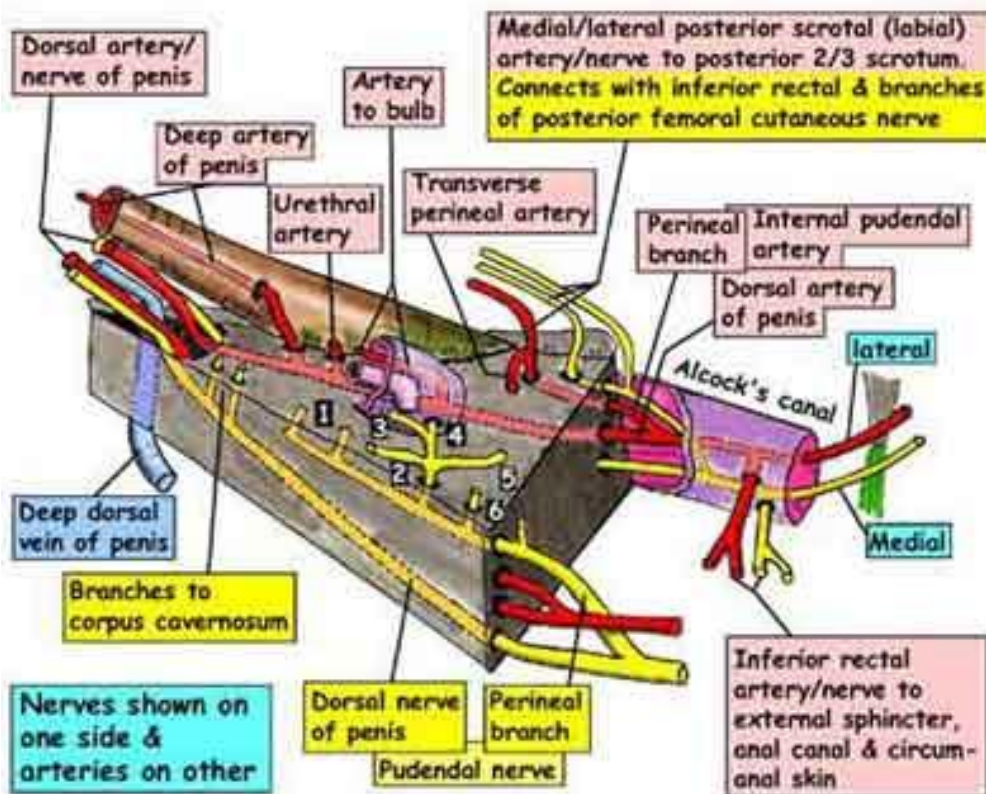


MALE PERINEUM -VESSELS AND NERVES

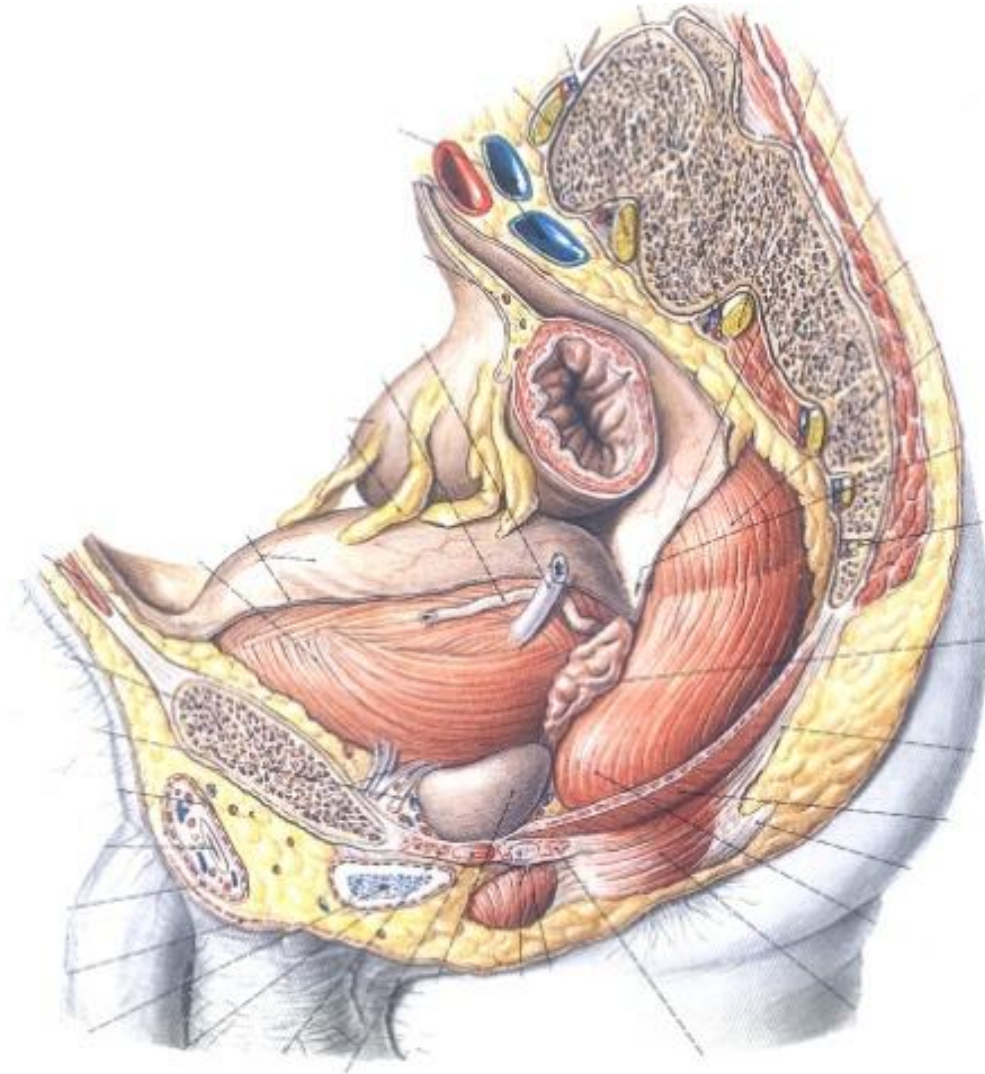
This rather complicated diagram below depicts the arrangement of vessels and nerves in the male perineum but it largely applicable to both sexes. The grey wedge represents the urogenital diaphragm seen from below. The small diagram is the key to the larger one to show the orientation



- Branches of the perineal nerve
1. Deep transverse perineal & external sphincter
 2. Ischiocavernosus
 3. Bulbospongiosus
 4. Sensory to urethra
 5. Superficial transverse perineal
 6. Posterior scrotal/labial



KISMEDENCEI SZERVEK



Vesica urinaria

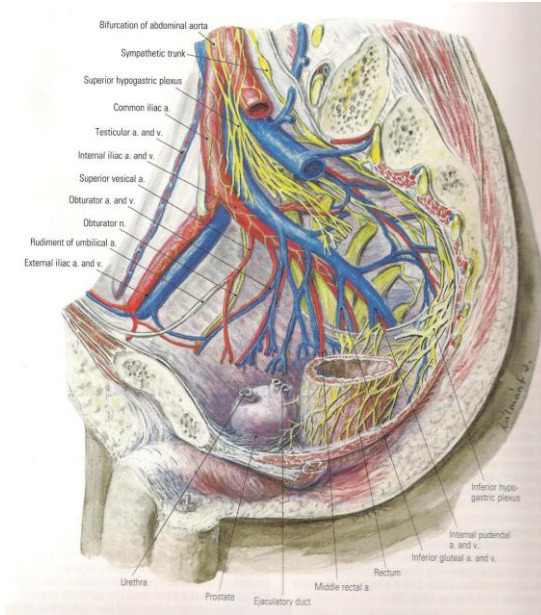
Vesicula seminalis

Vas (*seu* ductus)
deferens

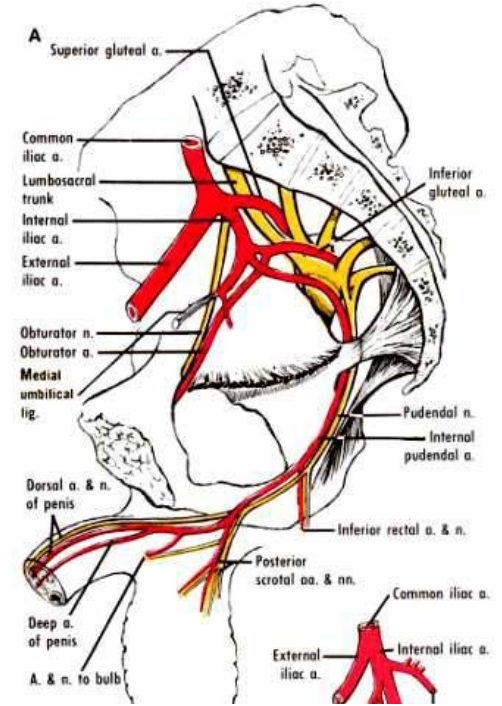
Prostata

Rectum

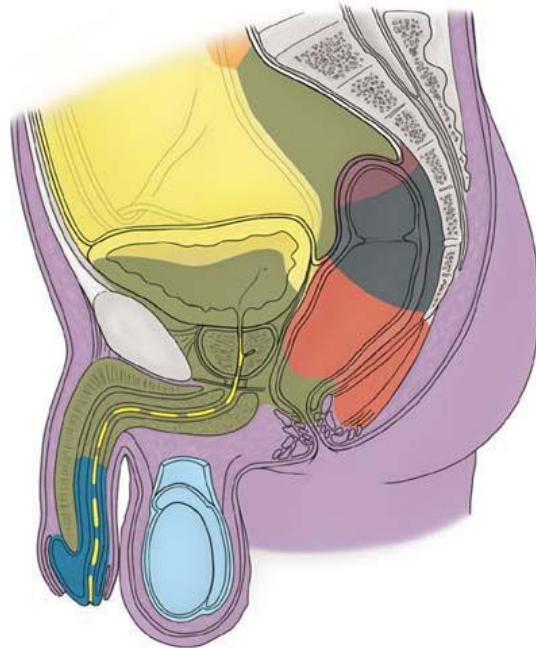
PLEXUS HYPOGASTRICUS



A. ILIACA INTERNA ÁGAI

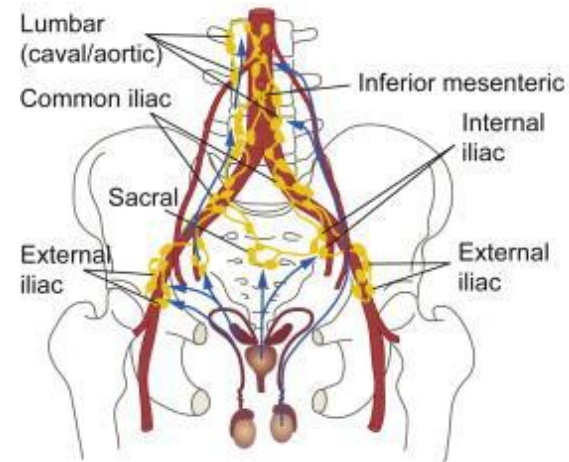


NYIROKELVEZETÉSE

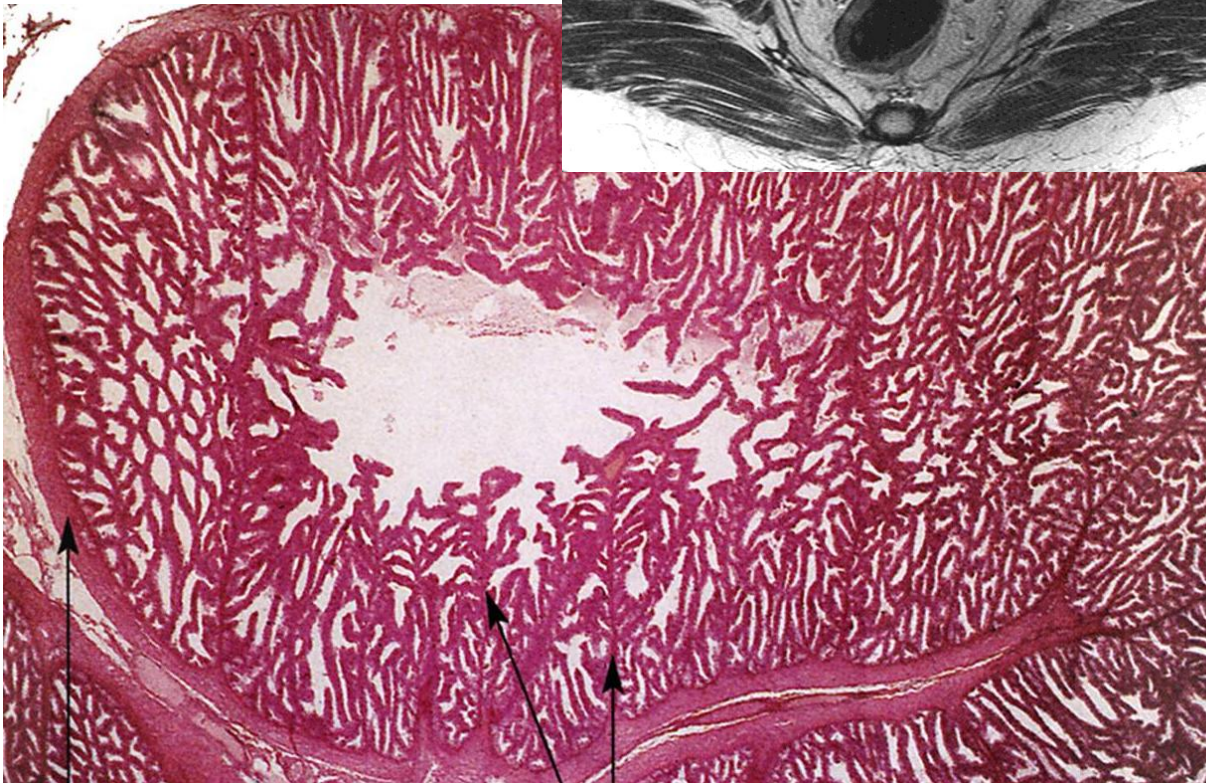
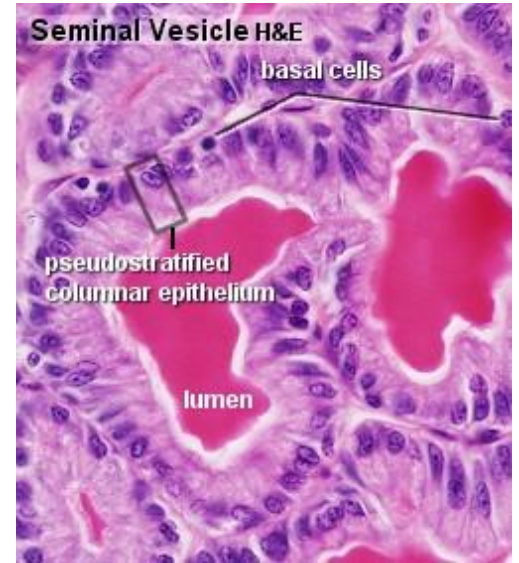
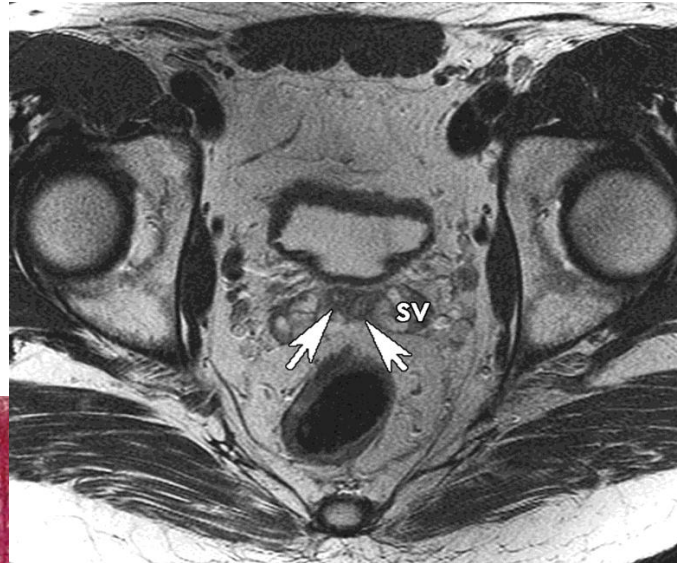
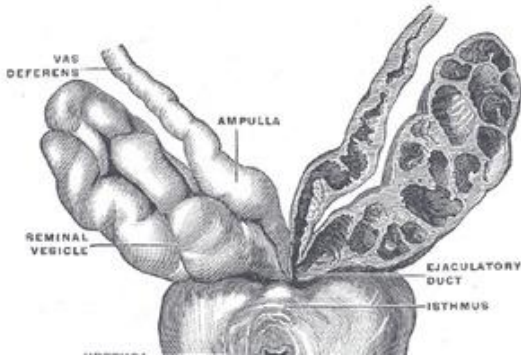


Lymph nodes:

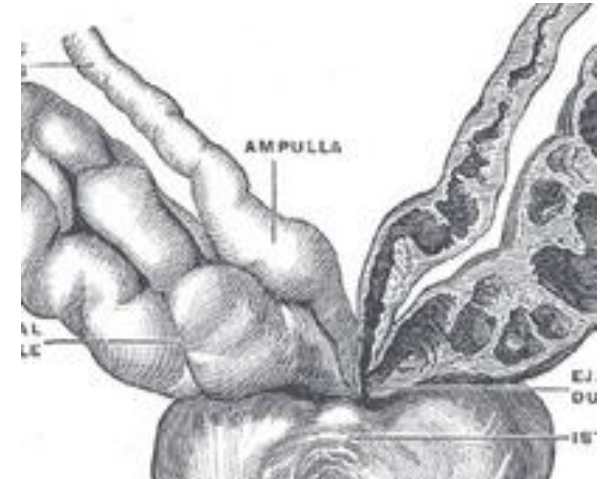
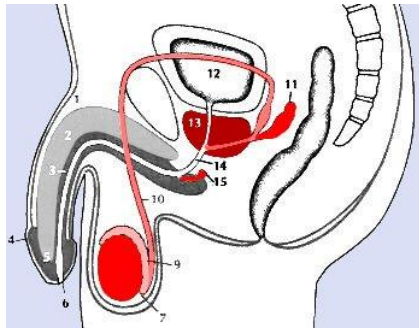
- Lumbar (caval/aortic)
- Inferior mesenteric
- Common iliac
- Internal iliac
- External iliac
- Superficial inguinal
- Deep inguinal
- Sacral
- Pararectal



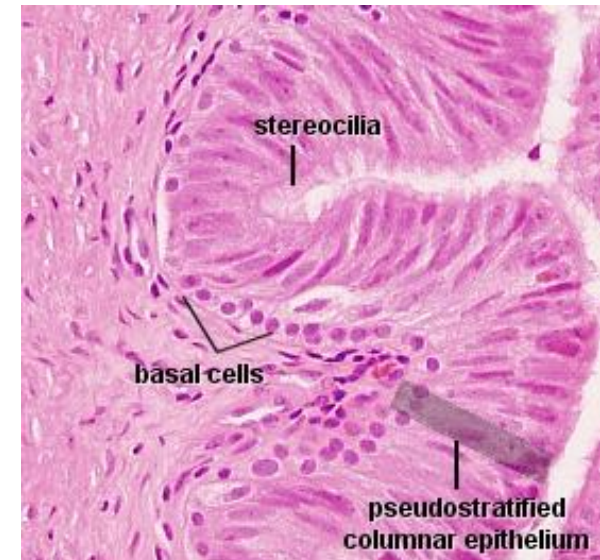
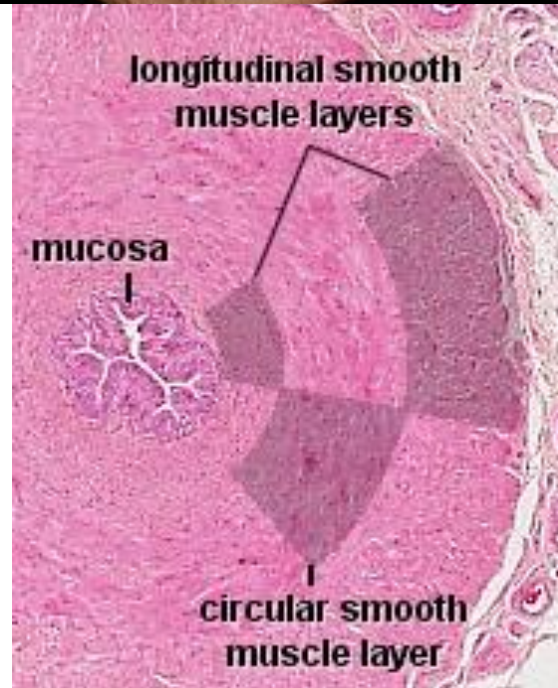
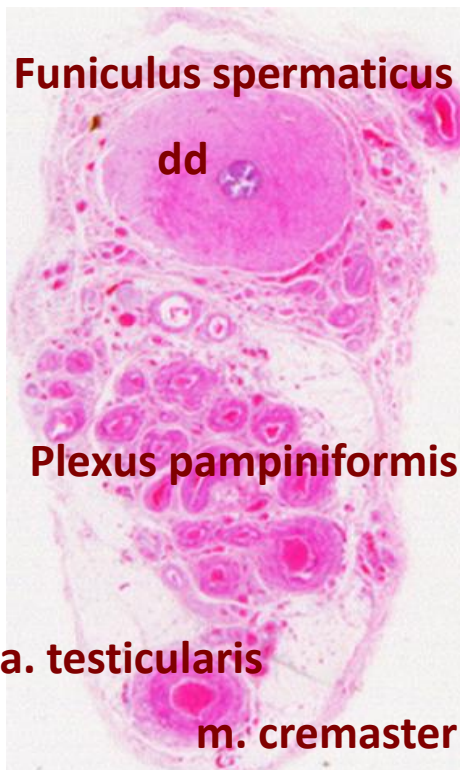
VESICULA SEMINALIS



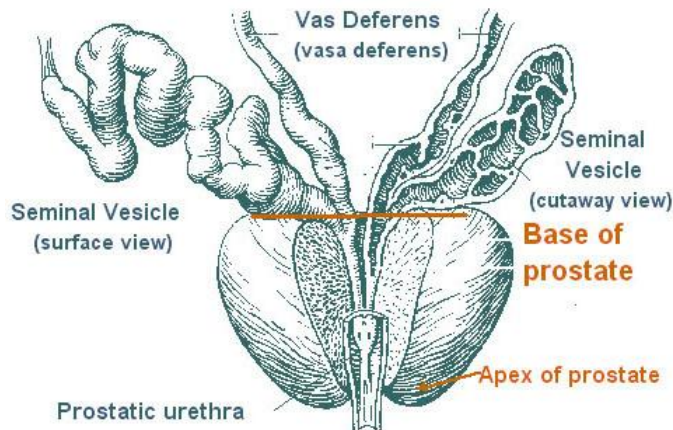
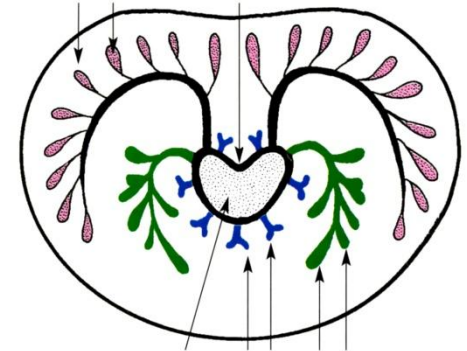
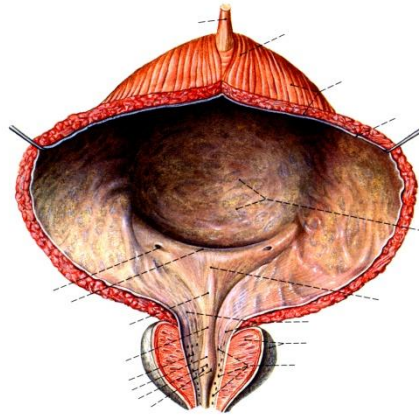
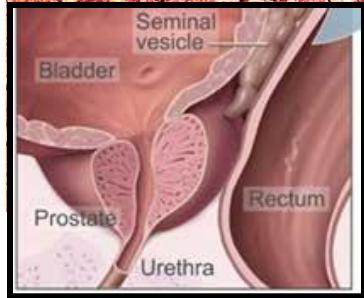
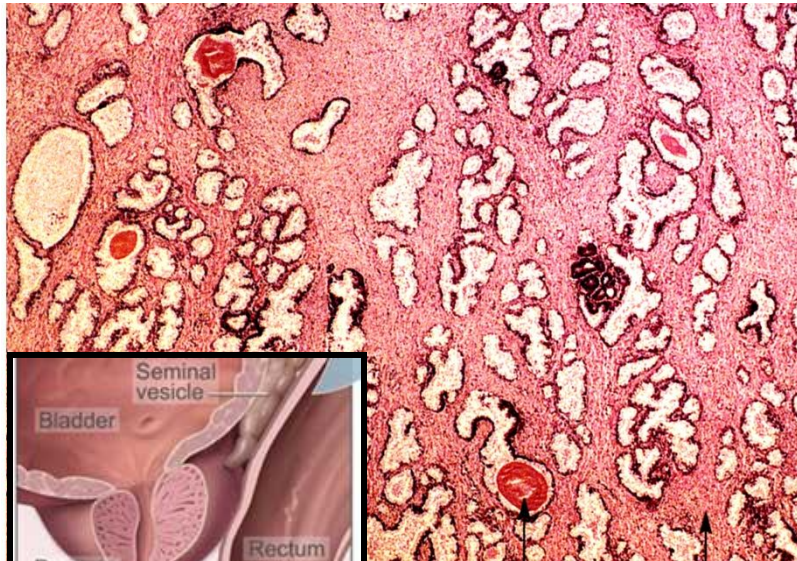
DUCTUS DEFERENS



Funiculus spermaticus



PROSTATATA

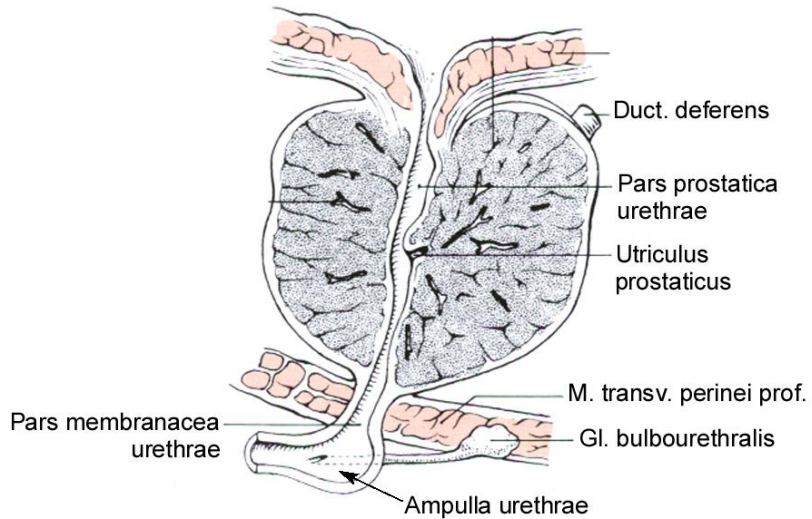


SECRETUM: mucinózus, (fruktózt tartalmaz)

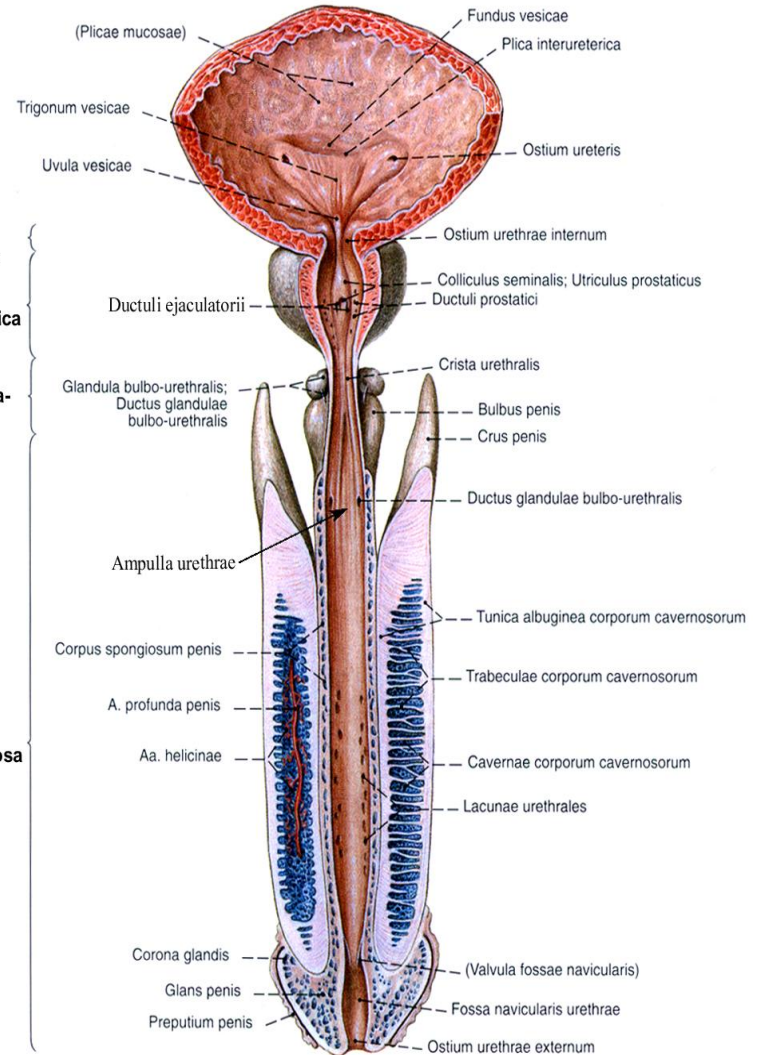
TOPOGRAPHIA:

Rectum és a húgyhólyag ,
Urethra (pars prostatica),
ductus ejaculatorius (d. deferens és d. excr.
vesiculae seminalis)

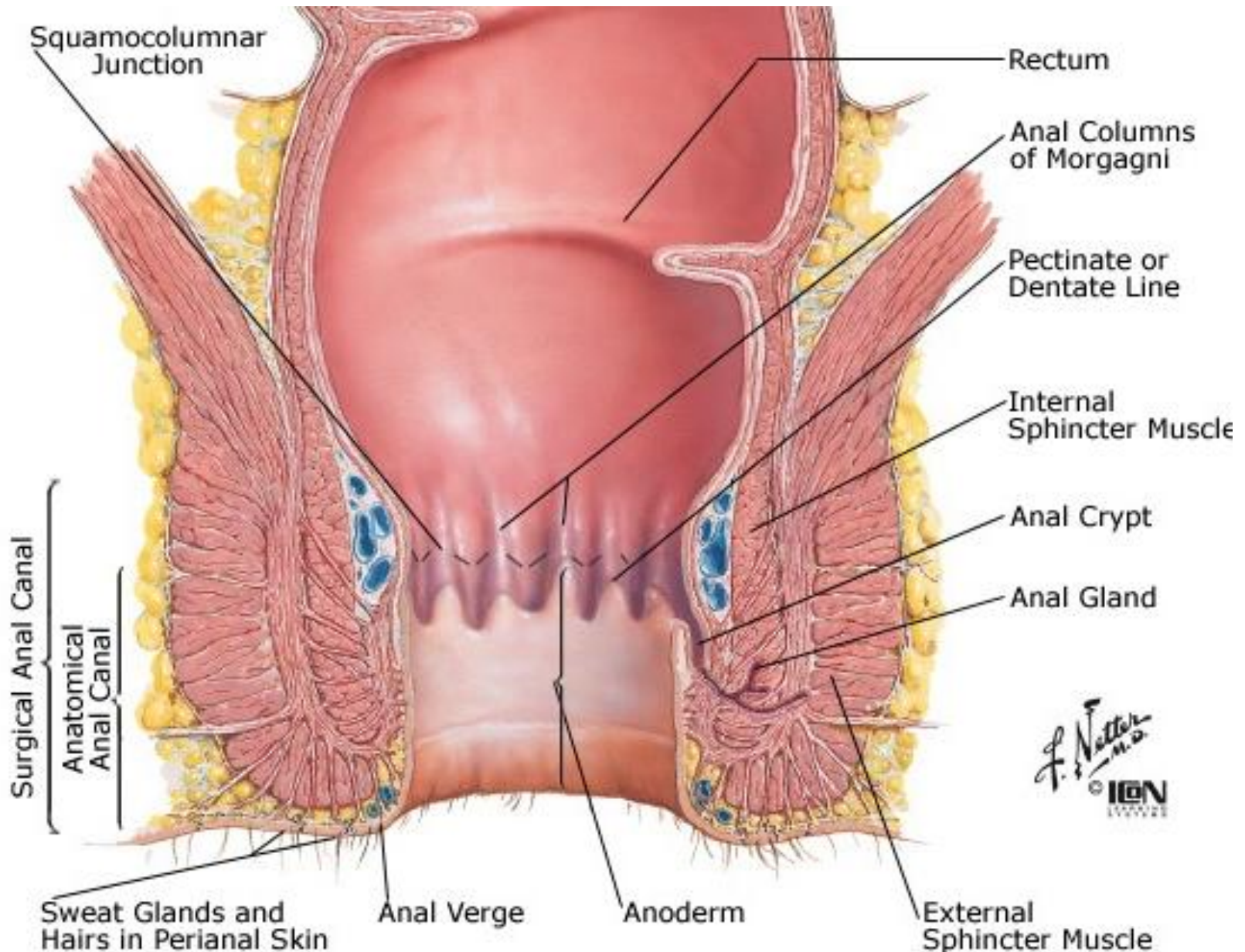
A MEDENCE „KIJÁRATAI”: URETHRA MASCULINA



Urethra masculina

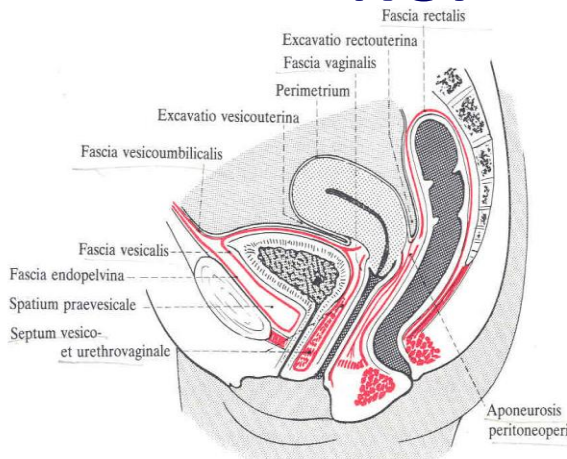


A MEDENCE „KIJÁRATAI”: CANALIS ANALIS

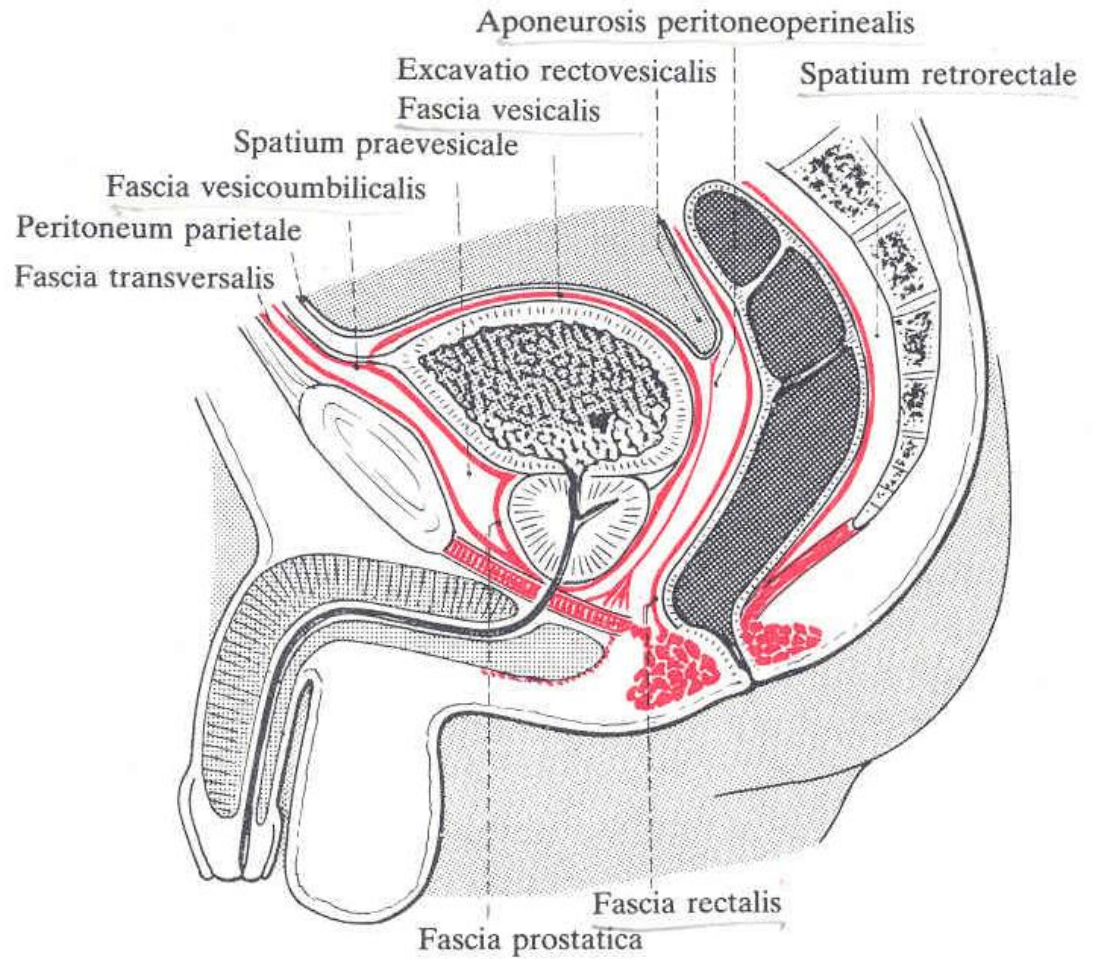


MEDENCE FASCIÁI KÖTŐSZÖVETES TEREI

NŐI

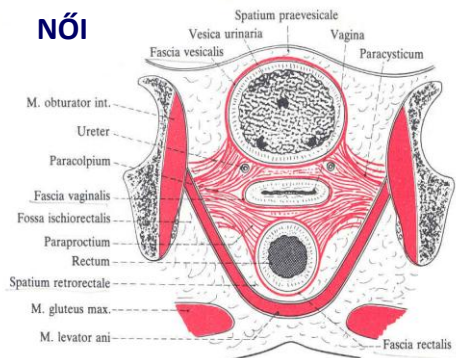


FÉRFI



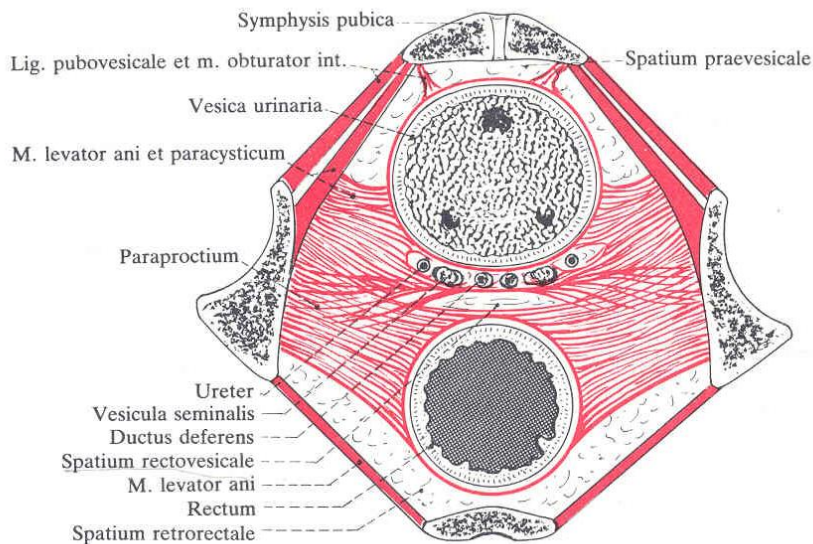
MEDENCEFENÉK KÖZELI FASCIÁK ÉS TEREK

Spatium prevesicale (Reitzus)



**Paraproctium
Paracystium**

FÉRFI



Spatium prevesicale

tartalma:

plexus venosus prostaticus
(Santorini)

Spatium retrorectale tartalma:

a. rectalis superior

A sacralis mediana et lateralis

Nn splanchnici pelvini et sacrales

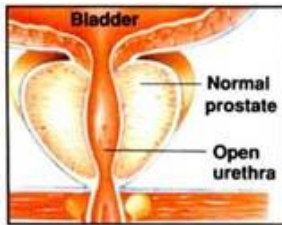
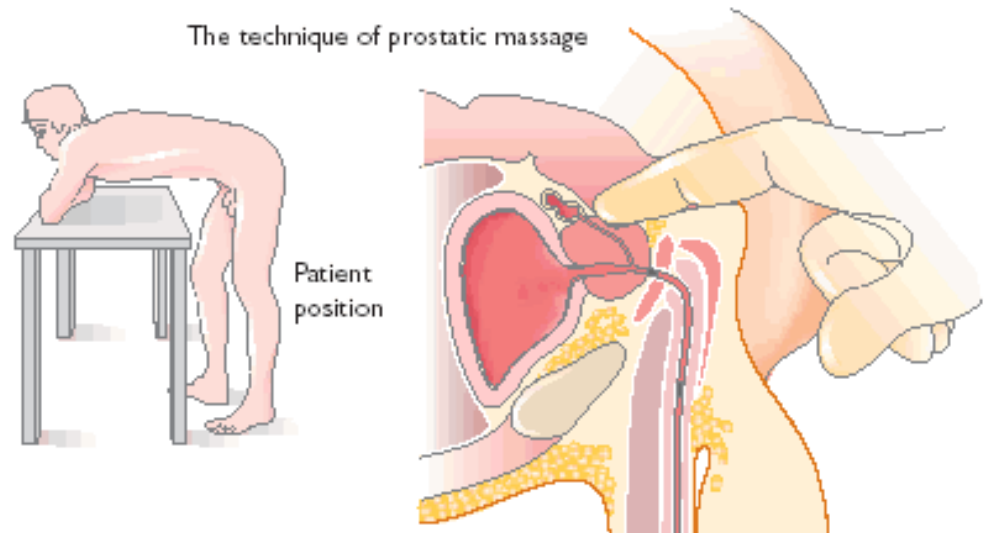
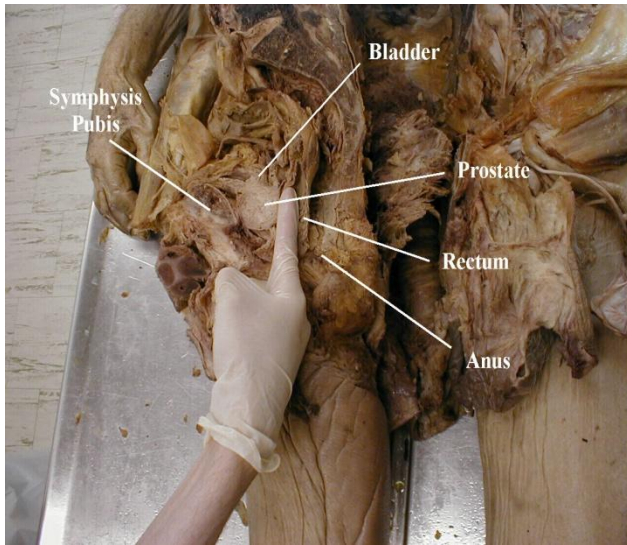
Plexus hypogastricus

Plexus sacralis ágai

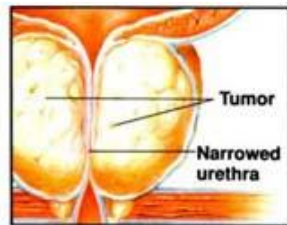
Spatium retrovesicale

Spatium retrorectale

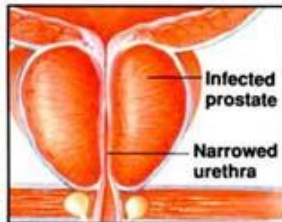
KLINKAI VONATKOZÁSOK



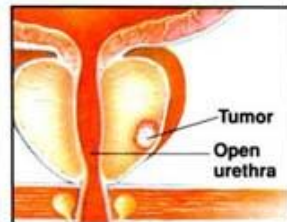
Normal prostate doesn't interfere with the urethra or urination.



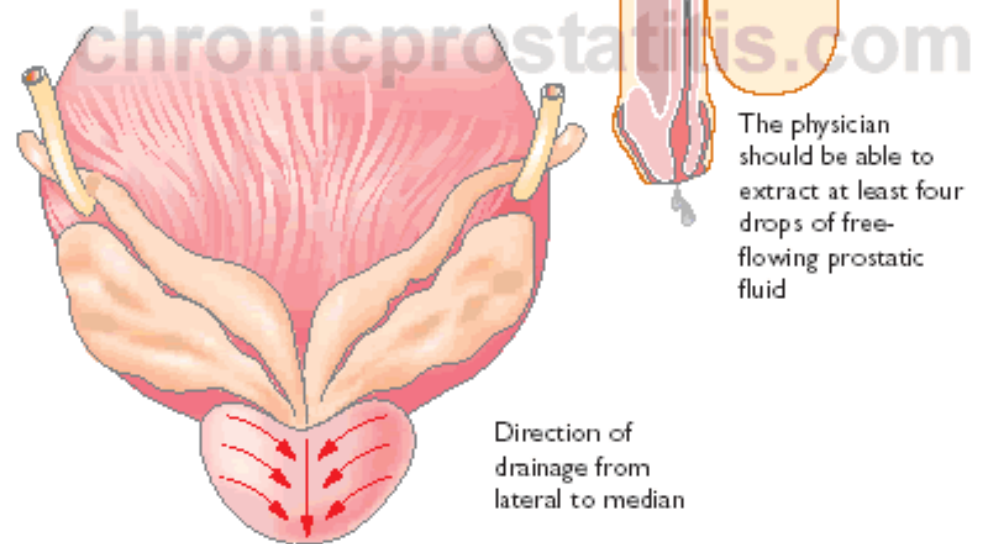
Benign tumors may squeeze and narrow the urethra.



Infected prostate may cause pain with urination.



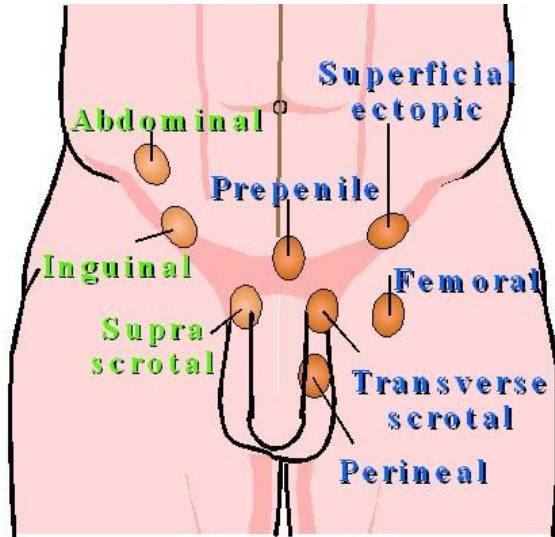
Malignant tumors in early stages don't cause symptoms.



From "The Prostatitis Manual" by J. Curtis Nickel, Bladon Medical Press. Used with permission.

KLINIKAI VONATKOZÁSOK

ECTOPIÁS HERE

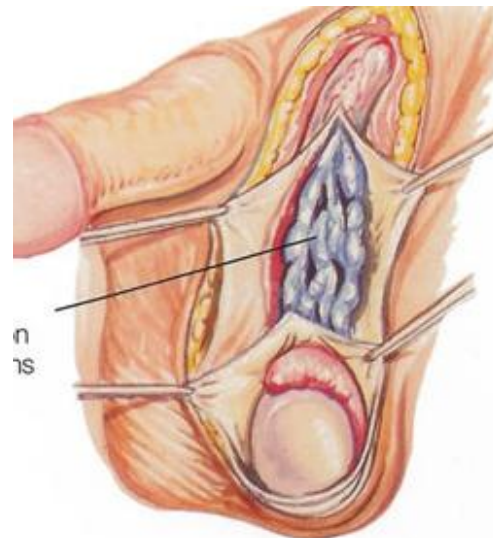


© 1992 Philippe Jeanty

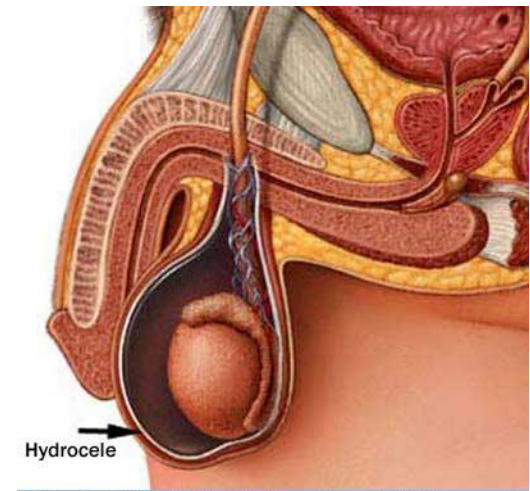
- True undescended testicle
- Ectopic testicle

CANALIS INGUINALIS

VARICOCELE



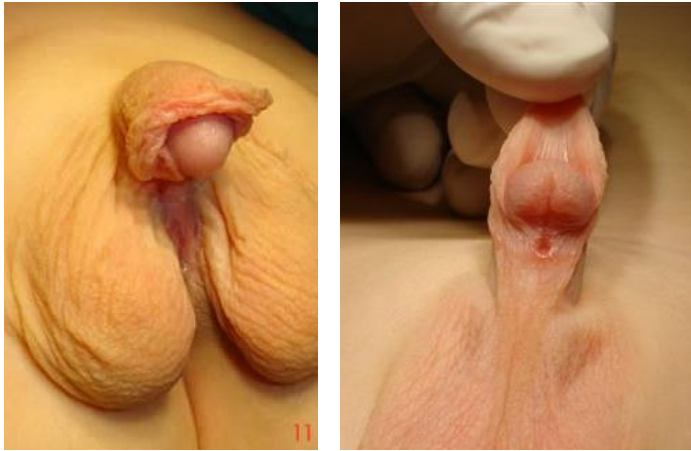
HYDROCELE



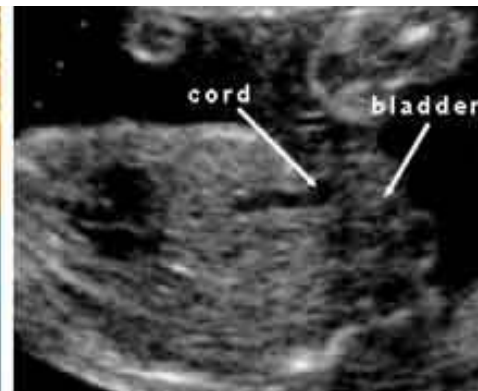
© Mayo Foundation for Medical Education and Research. All rights reserved.

KLINIKAI VONATKOZÁSOK

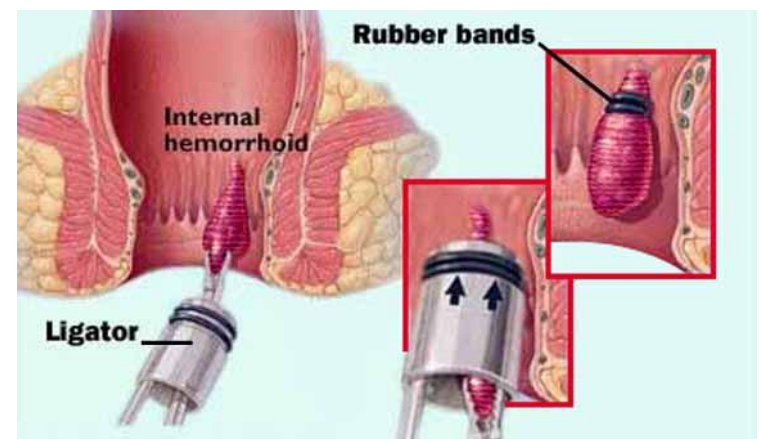
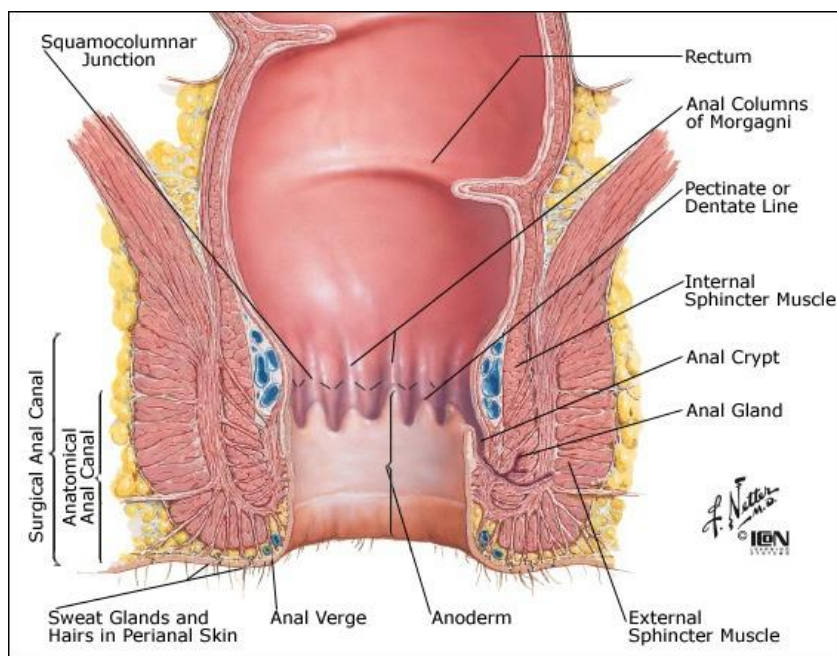
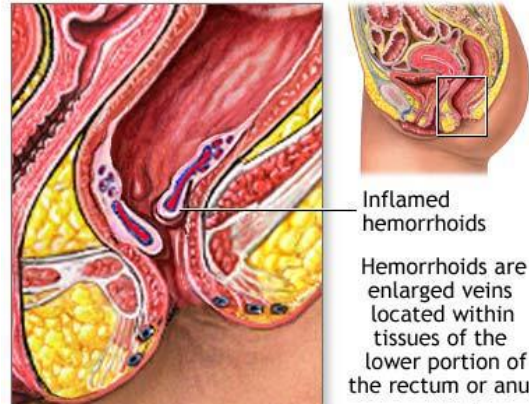
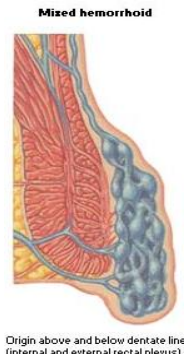
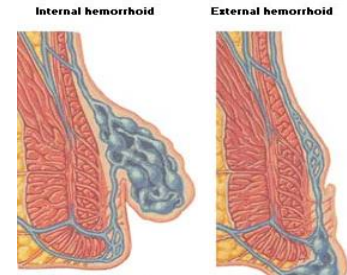
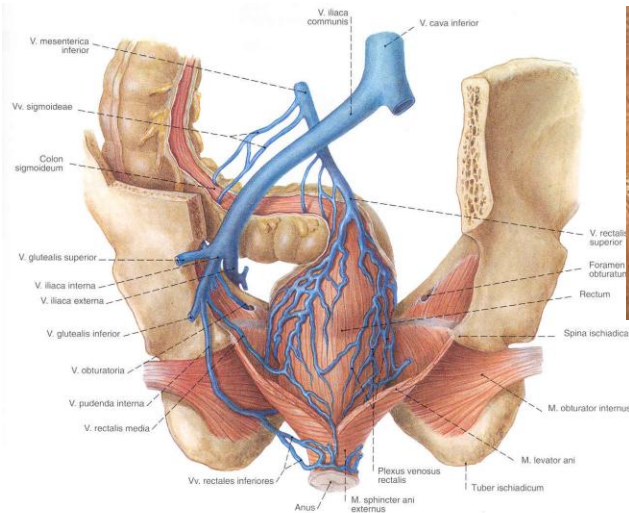
HYPOSPADIASIS



EXTROPHIA VESICAE

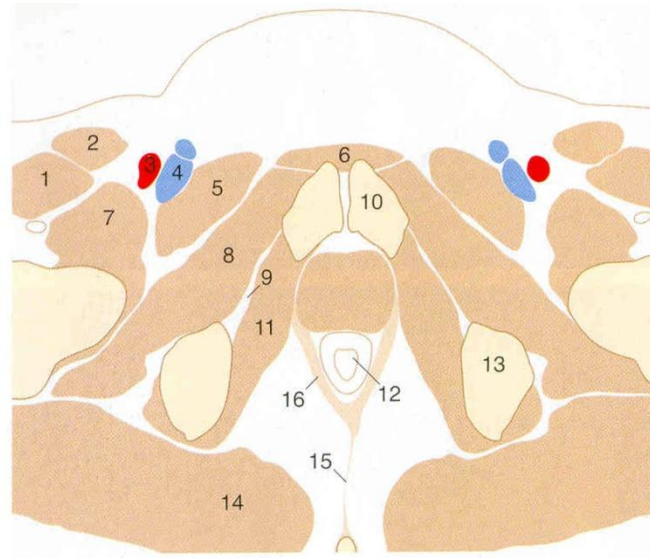
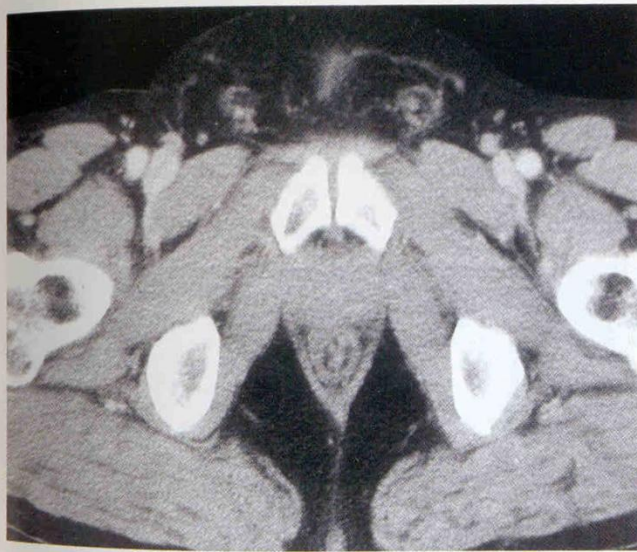
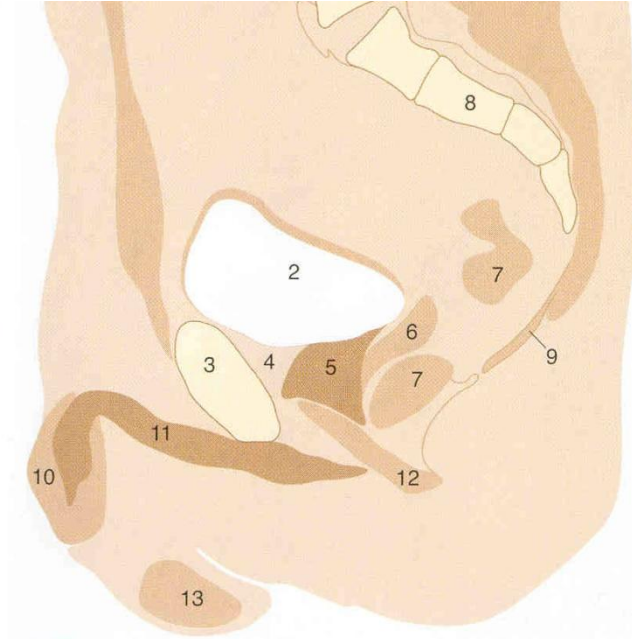


KLINIKAI VONATKOZÁSOK - NODUS HAEMORRHOIDALIS

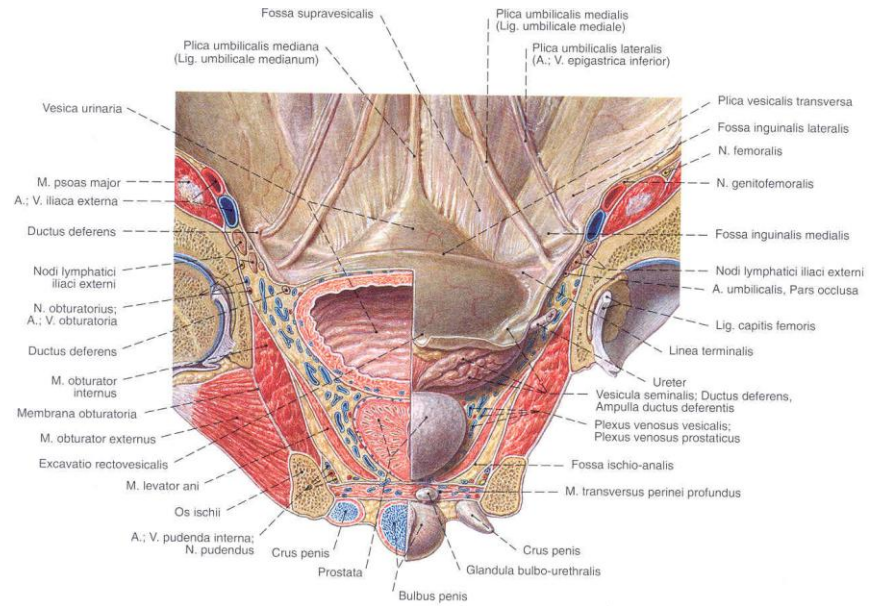
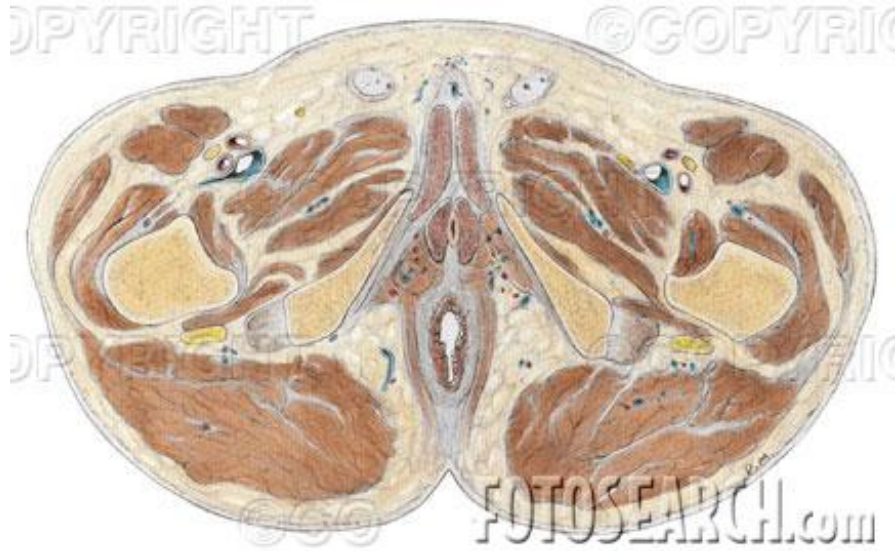


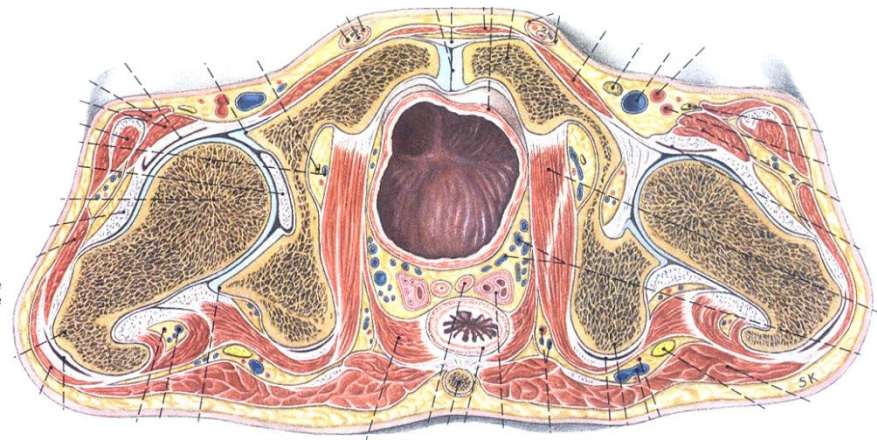
F. Netter M.D.
© I.B.N.

MRI

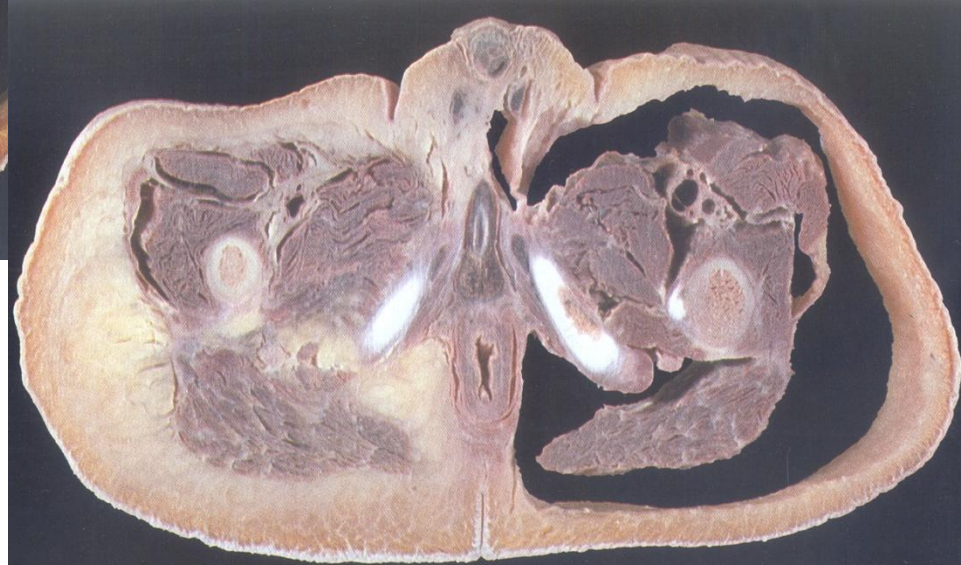


KERESZTMETSZETEK





KERESZTMETSZETEK



KÖSZÖNÖM A FIGYELMET!

