

Verdauungssystem I

Emese Pálfi

Semmelweis Universität

Anatomisches, Embryologisches und Histologisches Institut

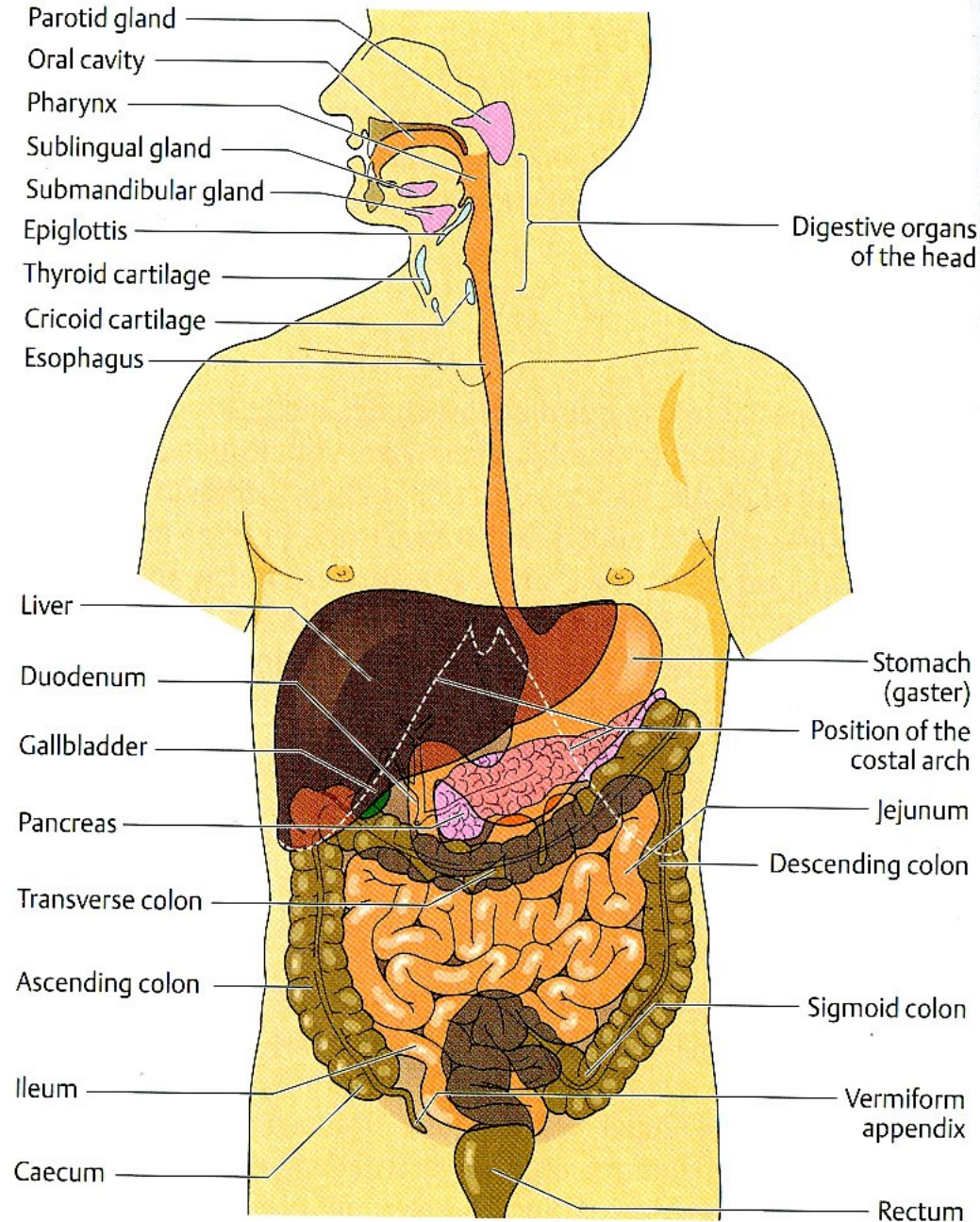
2019

Verdauungssystem

- Mundhöhle - *Cavum oris*
 - (Zähne, Zunge, Speicheldrüsen)
- Rachen - *Pharynx*
- Speiseröhre - *Oesophagus*

Zwerchfell--*Diaphragma*

- Magen - *Gaster*
- Dünndarm - *Intestinum tenue*
- Dickdarm - *Intestinum crassum*



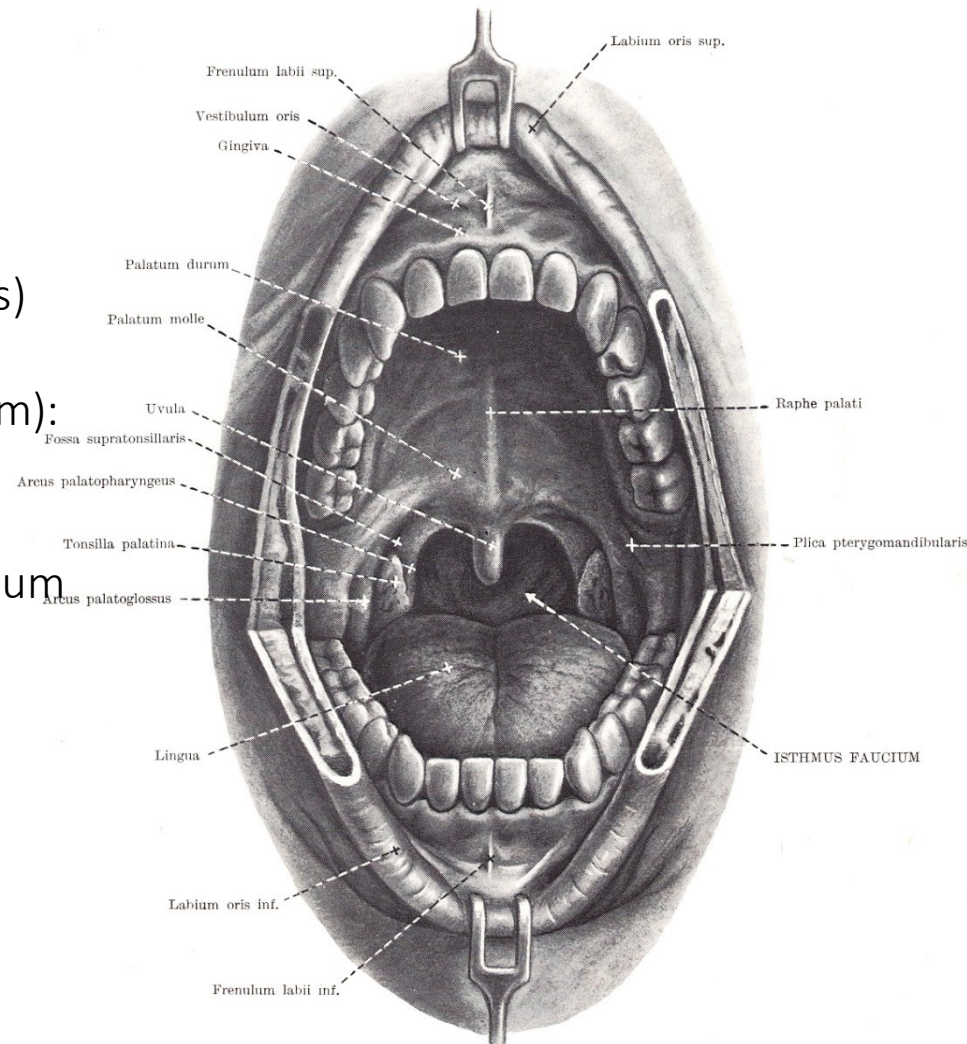
Mundhöhle

Grenze: **vorne:** obere, untere Lippe (Labium sup/inf) - Rima oris
oben: harter und weicher Gaumen (Palatum durum / molle)
unten: Mundboden (Diaphragma oris)
lateral: Wange (Bucca)
hinten: Schlundenge (Isthmus faucium):
„Ausgang“ zum Rachen

Mundhöhle: Vestibulum oris + Cavum oris proprium

Vestibulum oris: zwischen Labium superius und inferius und Arcus dentalis sup., inf.

Cavum oris proprium: Zunge (Lingua)
Speicheldrüsen



Vorne: Lippe: muskulöse Falte

Gerüst: M. orbicularis oris (Pars labialis)

aussen: Haut

innen: Schleimhaut (Speicheldrüsen)

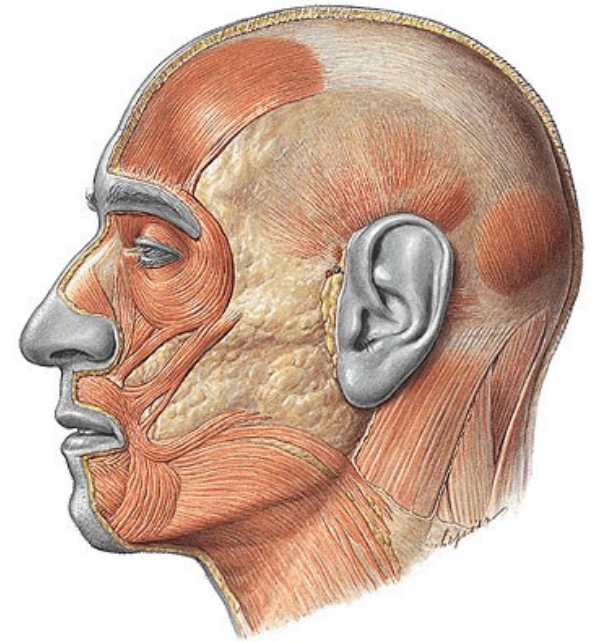
zur Rima oris: *rubor labii*

oberes und unteres *Frenulum* befestigt die Lippe an Gingiva (Zahnfleisch)

Innervation:

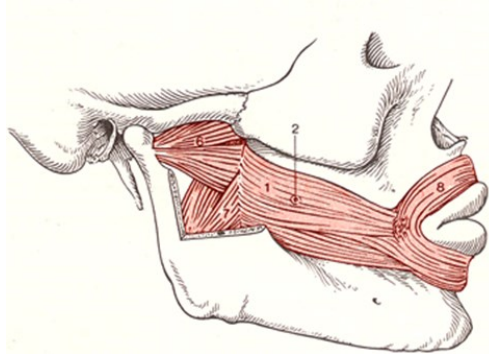
sensibel: N. infraorbitalis und N. mentalis (V/3)

motorisch: N. facialis (VII)



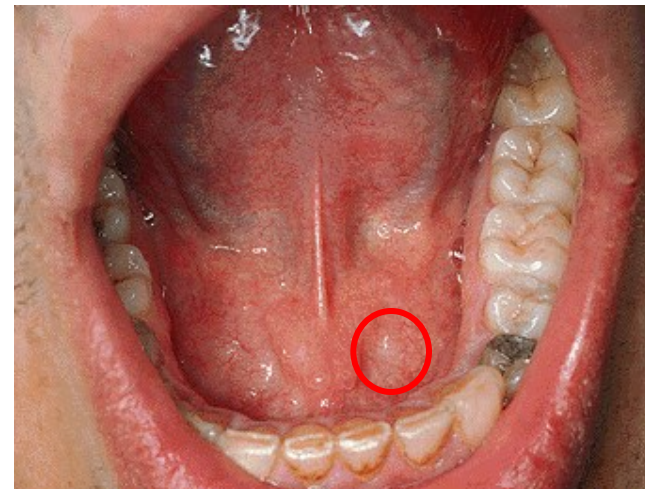
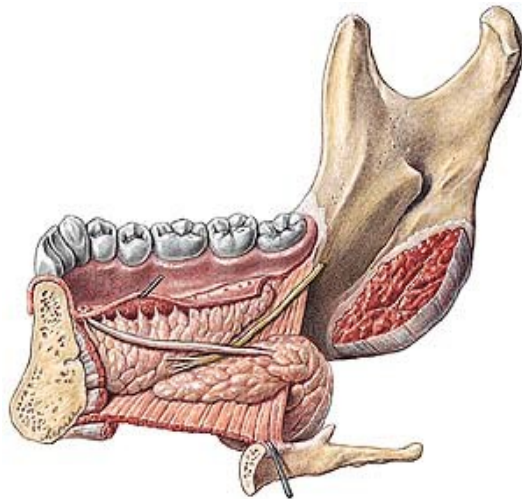
Lateral: *Wange (Bucca)*

M. buccinator+corpus adiposum buccae (Bichat-Fettkörper)

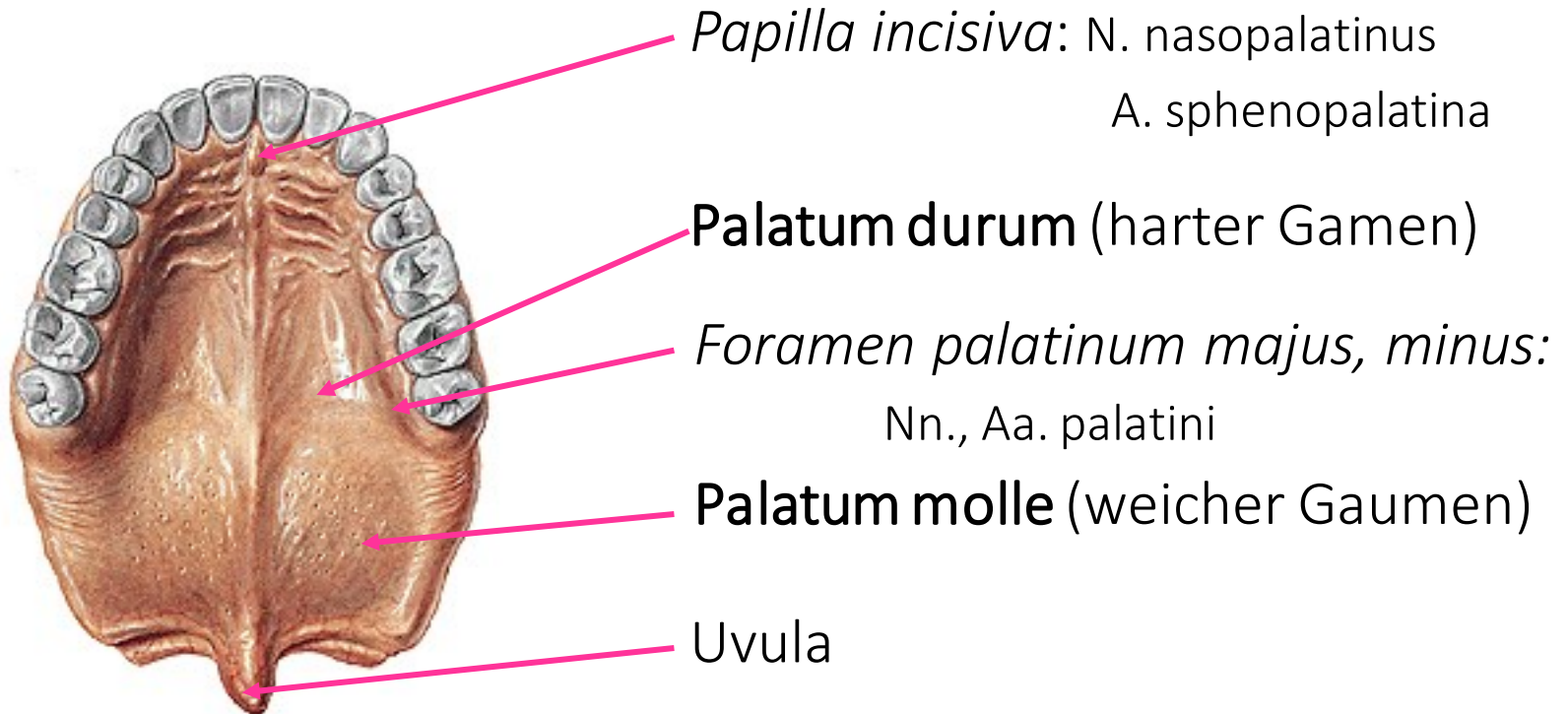


Unten: Mundboden (*Diaphragma oris*):

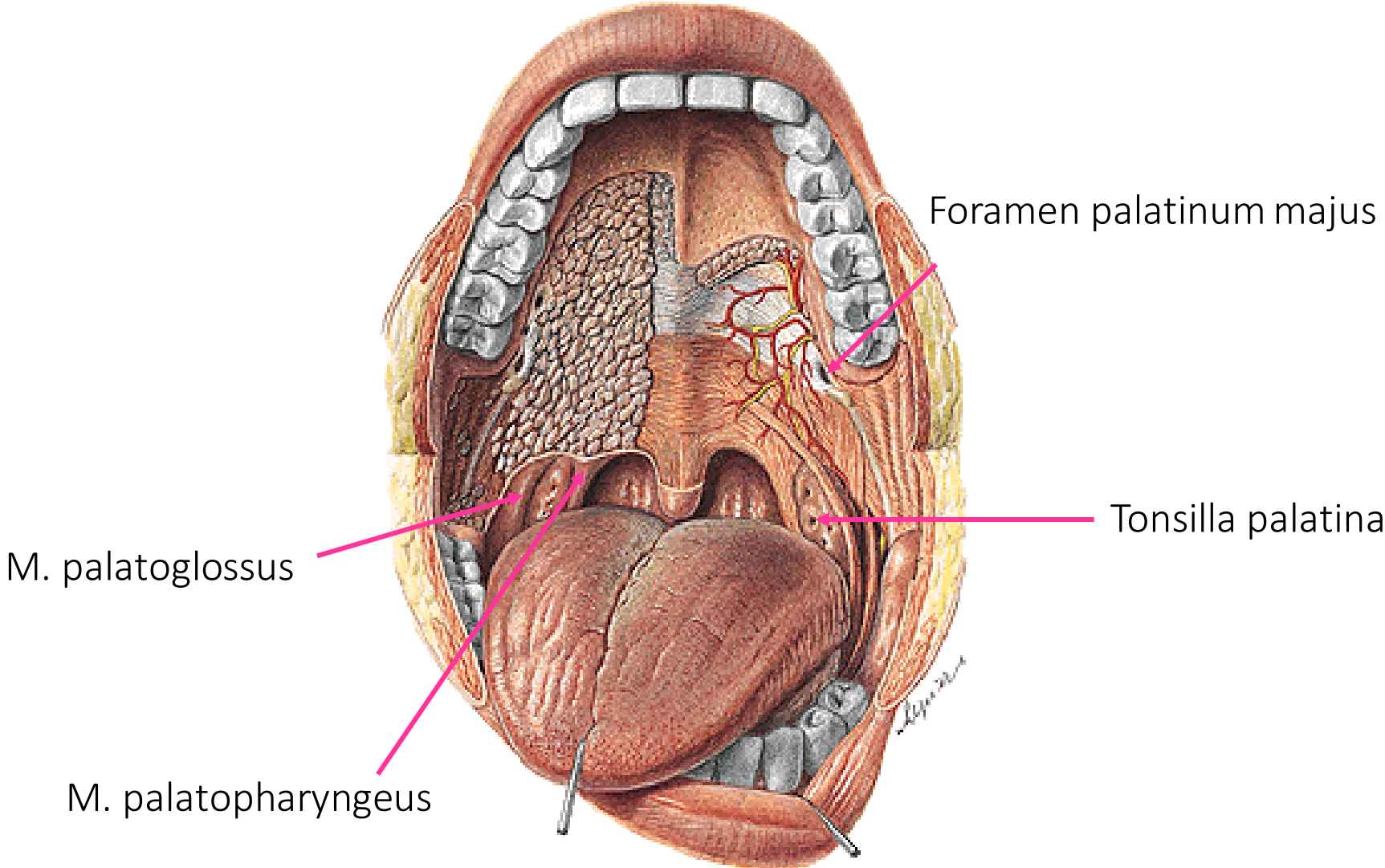
M. mylohyoideus, darauf: Unterzungendrüse
(Glandula sublingualis) *Caruncula sublingualis*



Oben: Gaumen (*Palatum*)



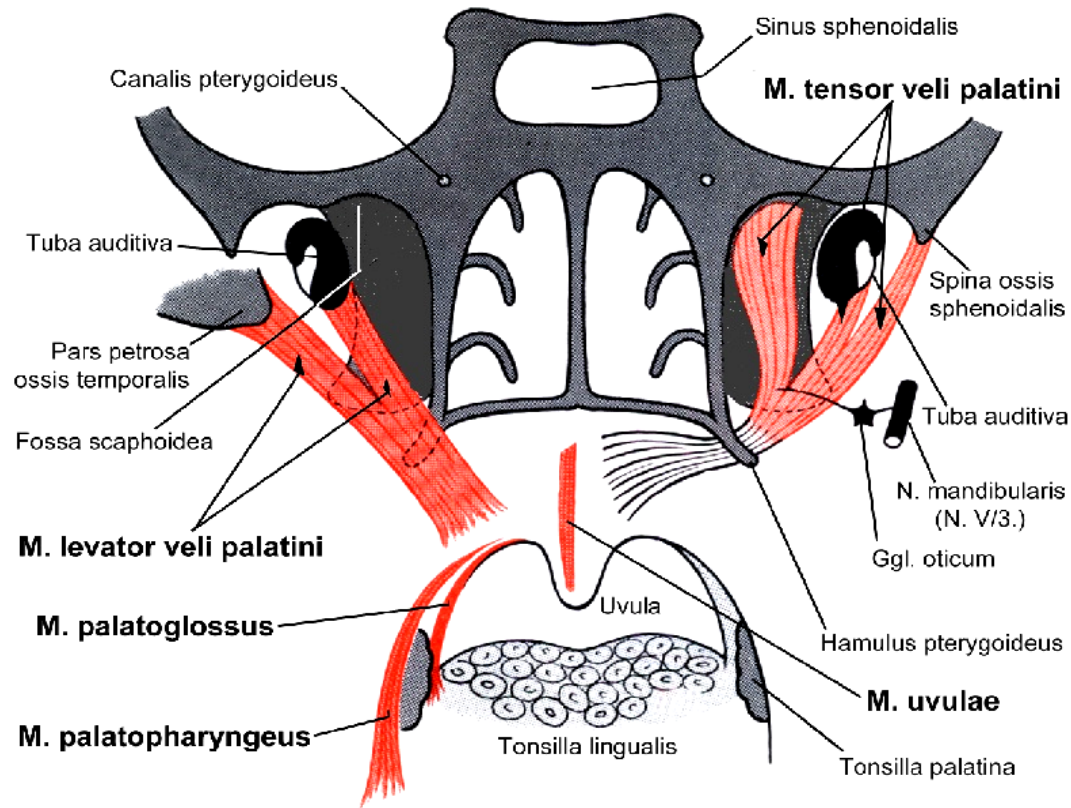
Gaumen



Muskeln des weichen Gaumens

Ursprung: Schädelbasis, Tuba-Knorpel

- M. levator veli palatini
(öffnet die Tuba auditiva!)
- M. tensor veli palatini
(öffnet die tuba auditiva!)
- M. palatoglossus
(hebt die radix linguae, zieht den weichen Gaumen nach unten)
- M. palatopharyngeus
(vom Gaumen – zur laterale Wand des Rachens)
- M. uvulae



Tuba auditiva (Ohrtrumpete):
Zwischen Rachen und Mittelohr

Zunge

Zungenmuskeln:

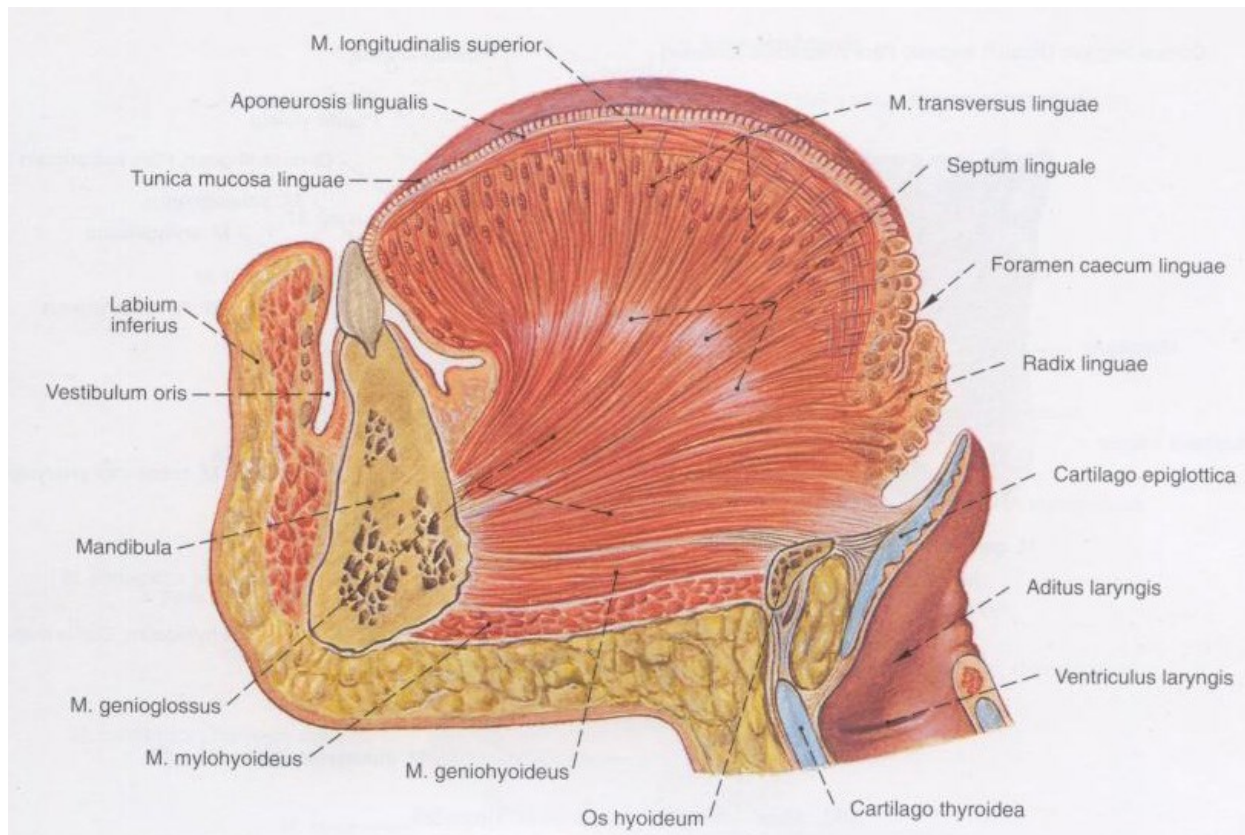
- innere:

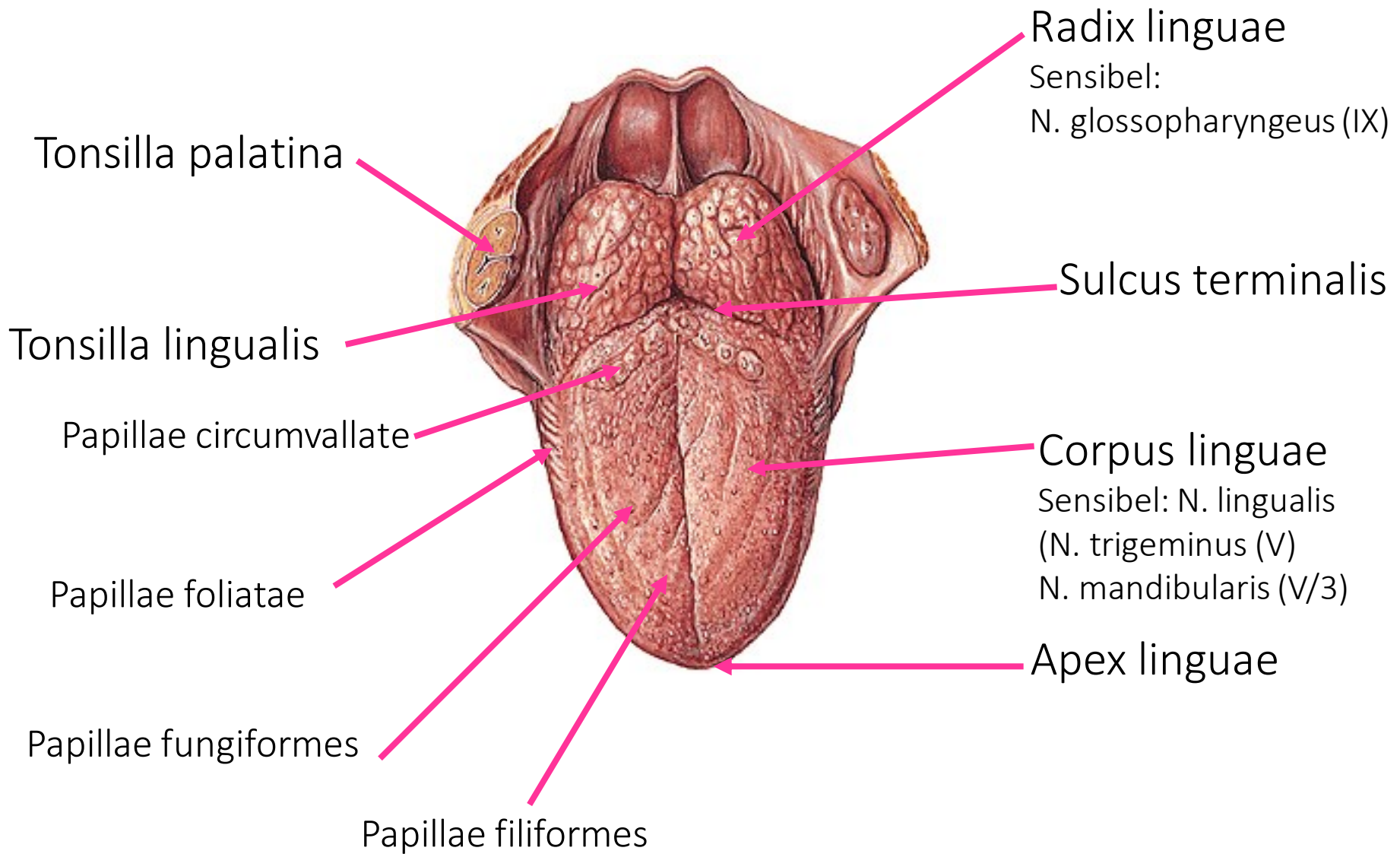
- Mm. longitudinales
- M. transversus
- M. verticalis

- äussere:

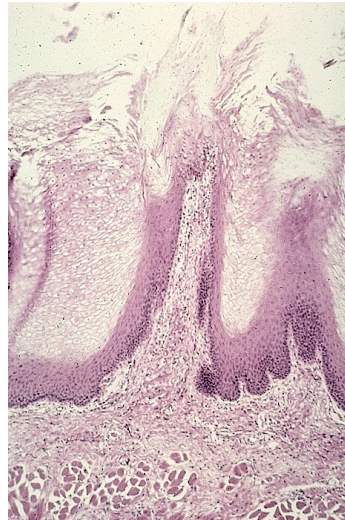
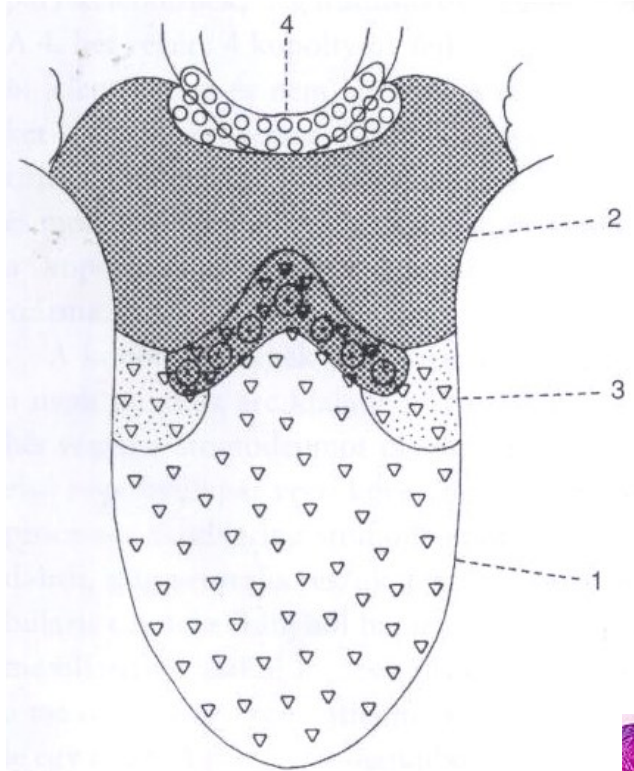
- M. genioglossus
- M. hyoglossus
- M. styloglossus

Innervation: N. hypoglossus (XII)

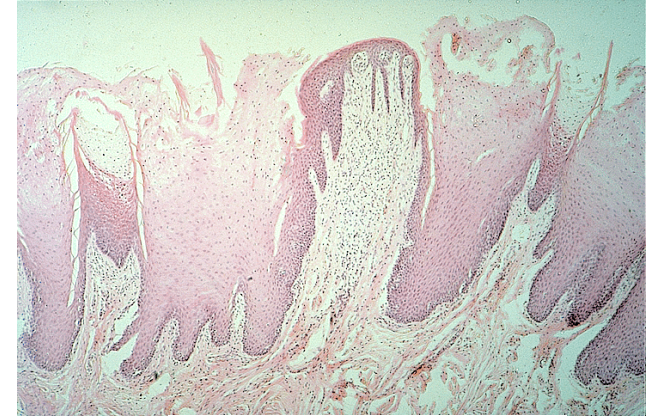




Zungenpapillen



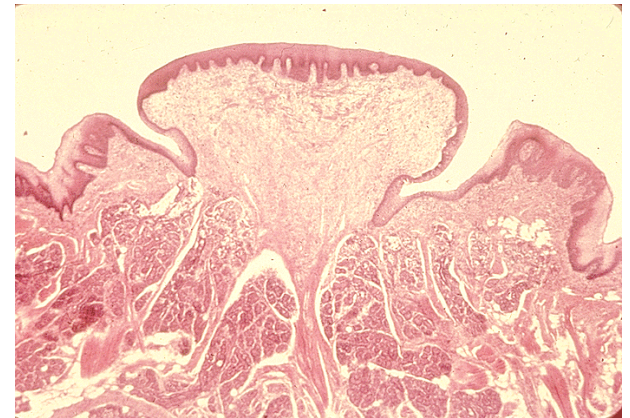
Papilla filiformis



Papilla fungiformis

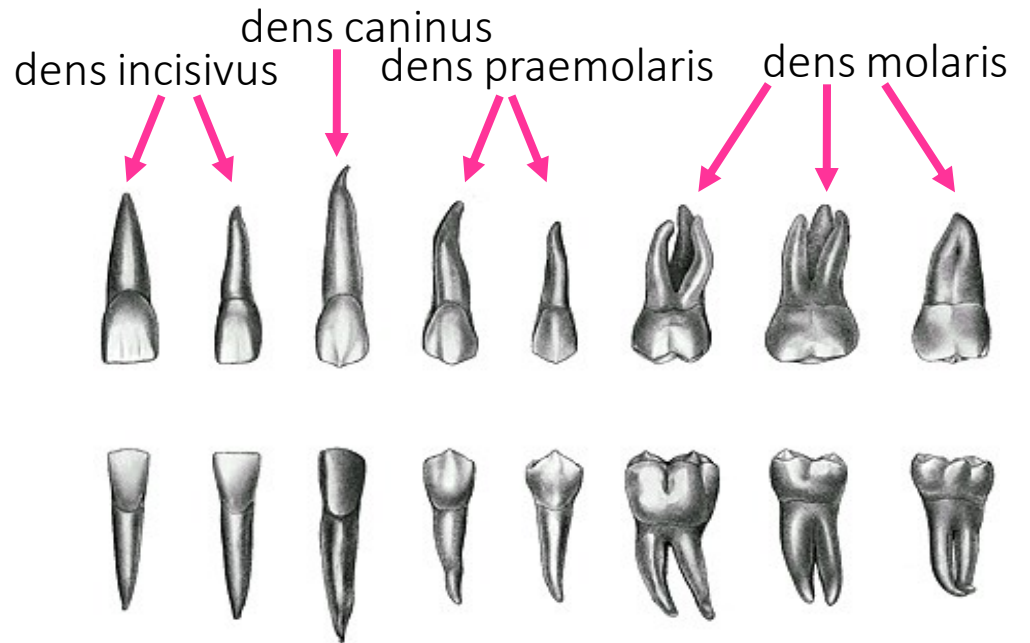
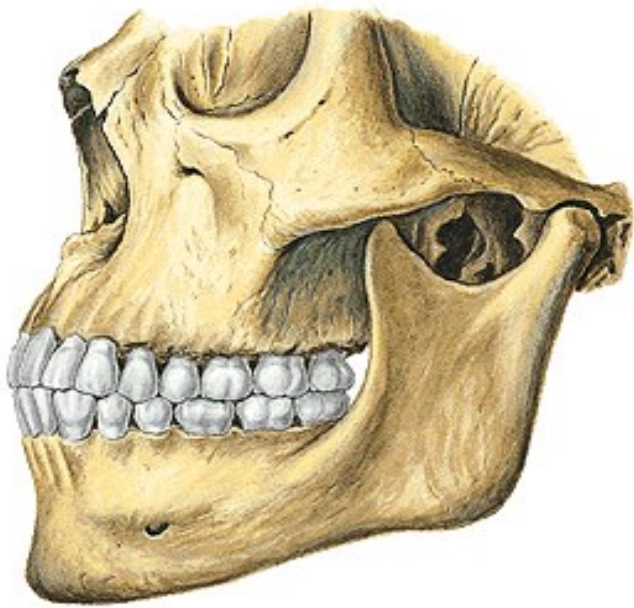


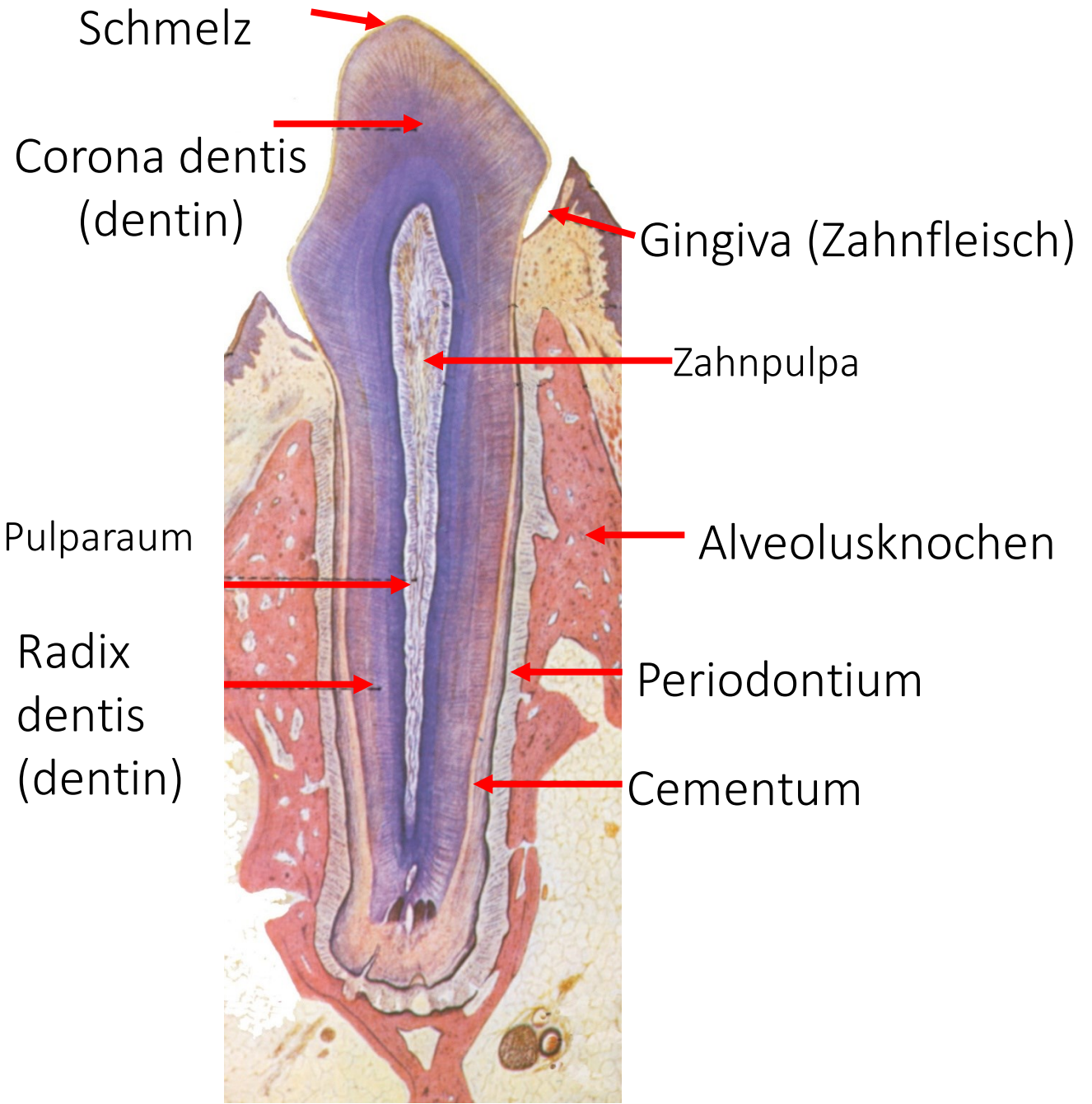
Papilla foliata



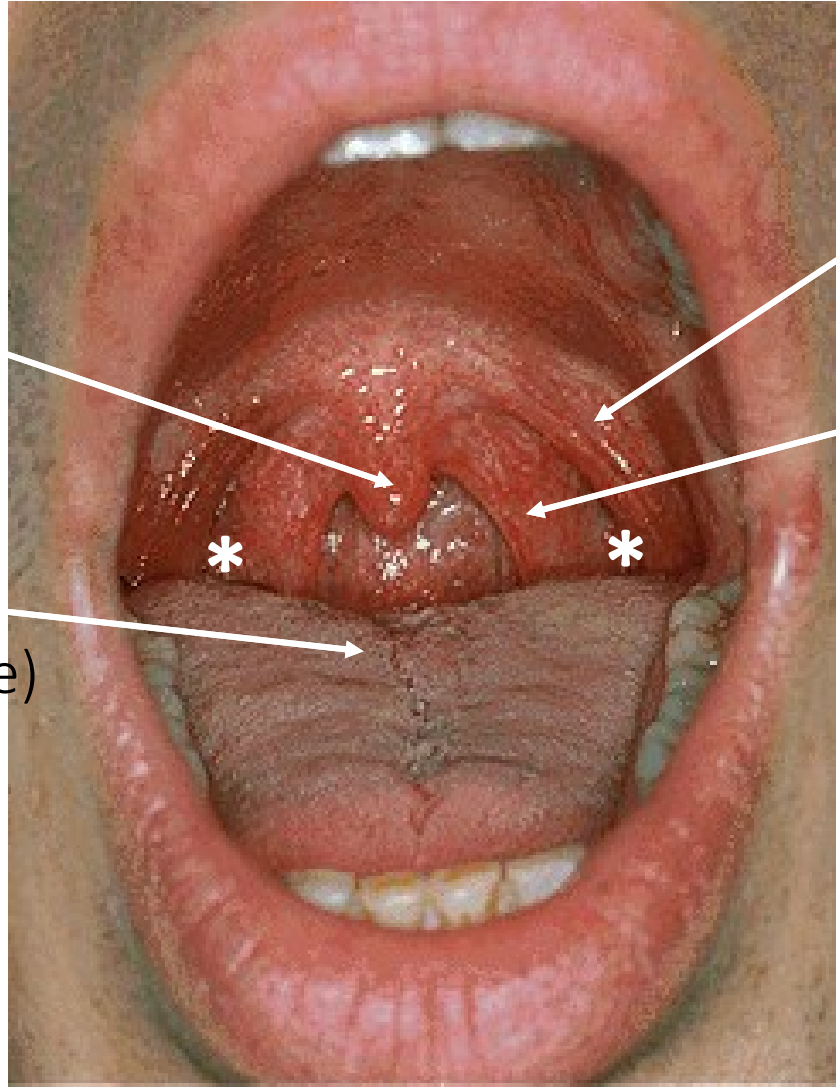
Papilla vallata (circumvallata)

Zähne





Schlundenge (*Isthmus faucium*)



Uvula

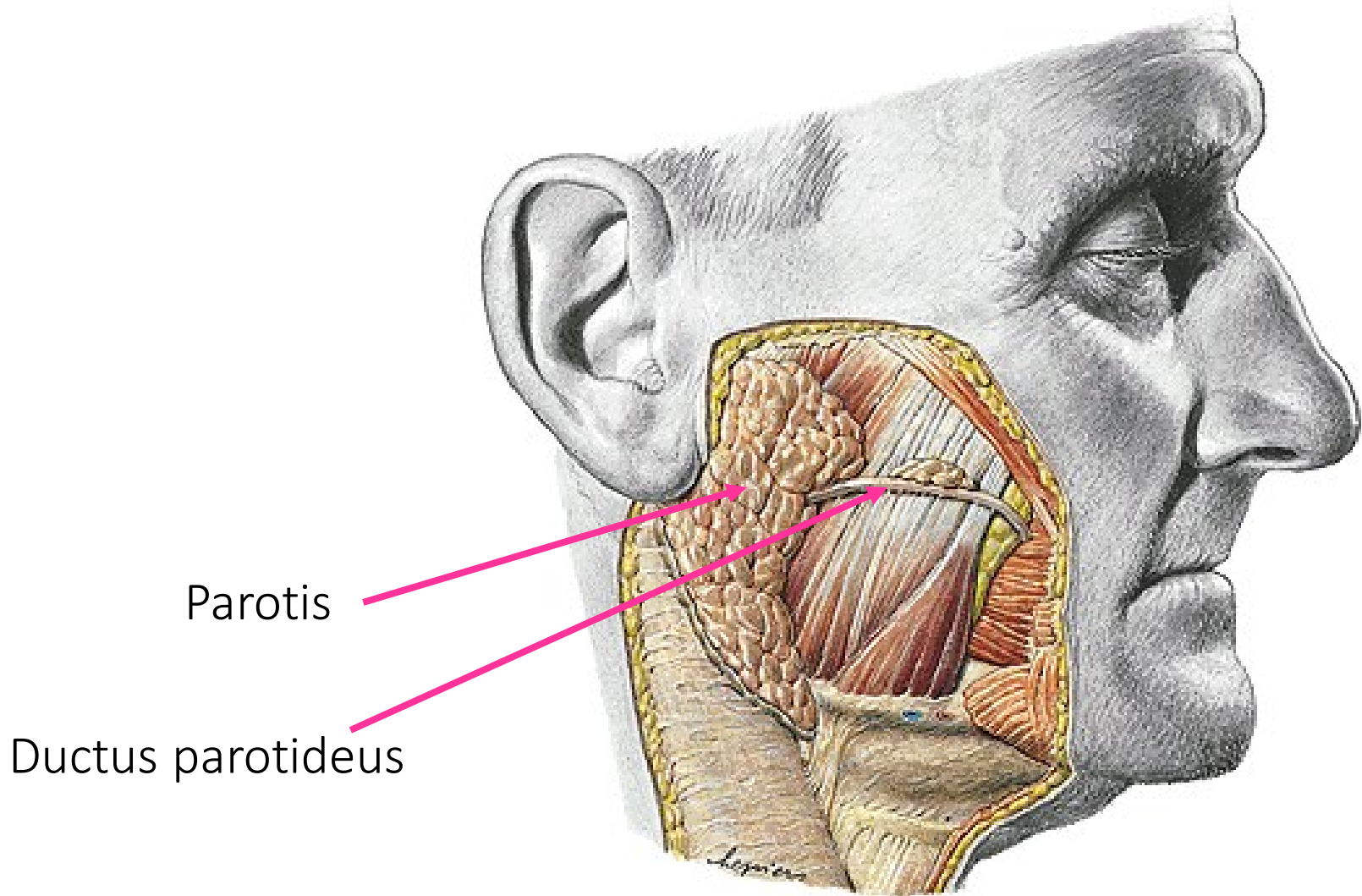
Zunge
(Radix linguae)

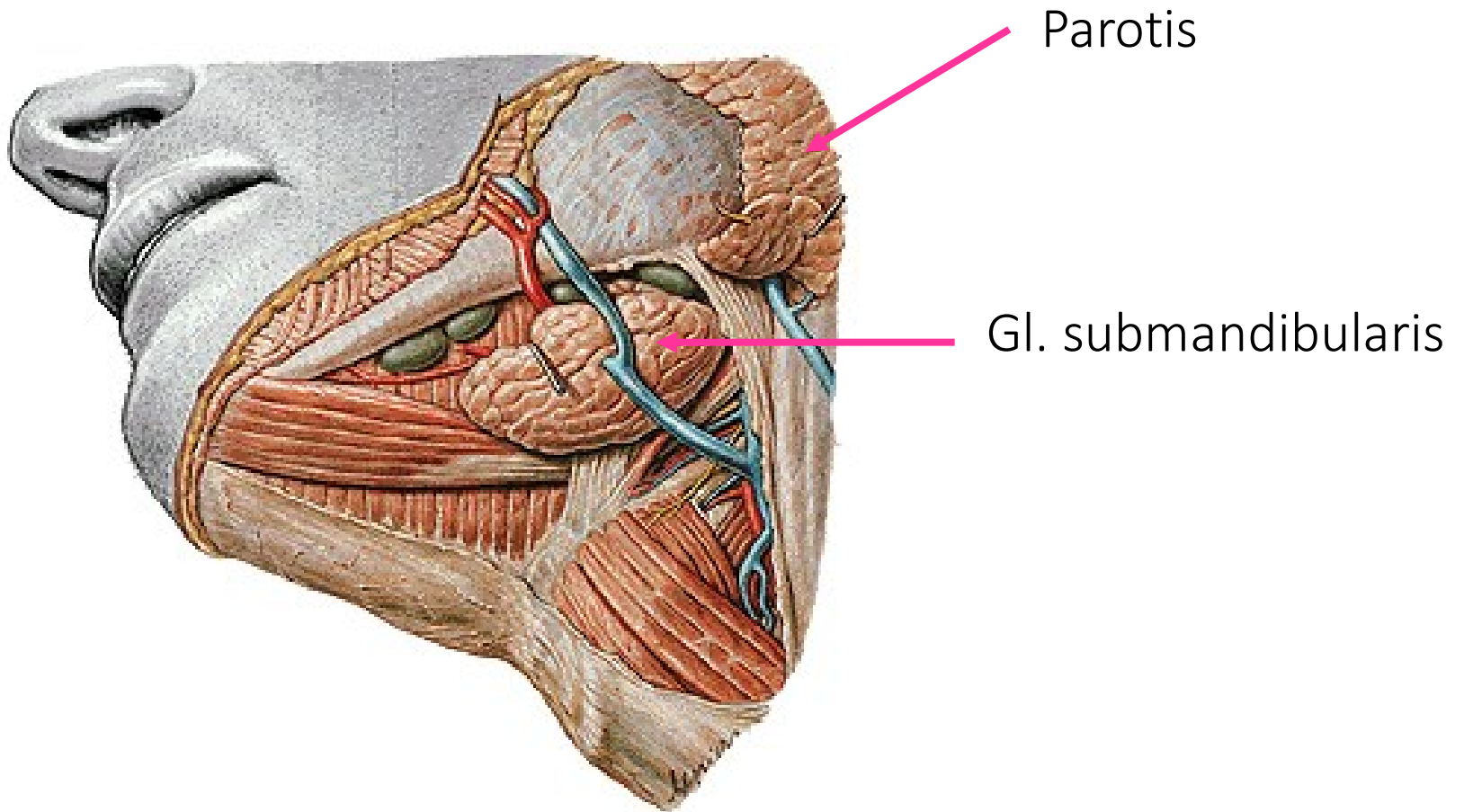
Arcus
palatoglossus

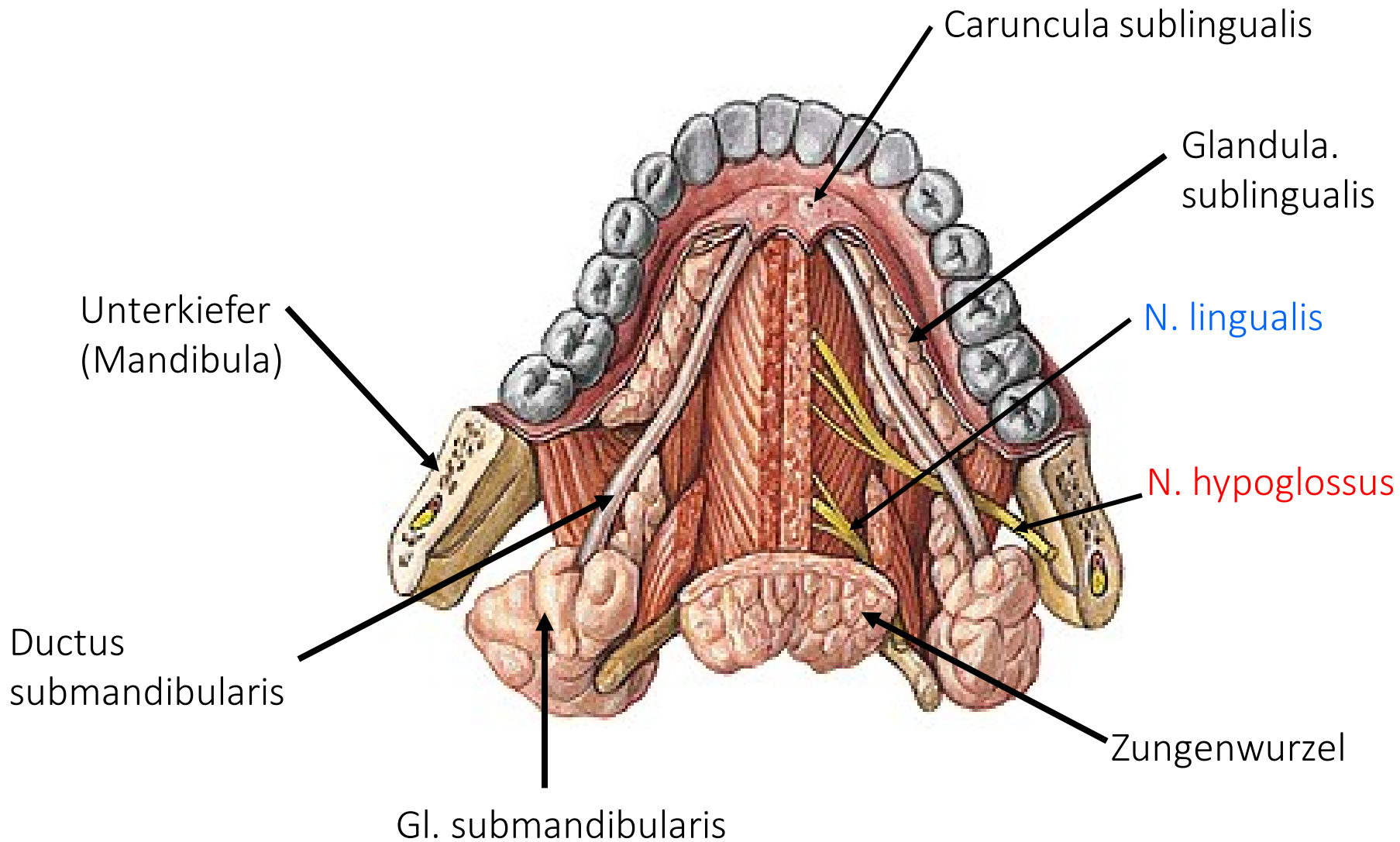
Arcus
palatopharyngeus

*: Tonsilla palatina

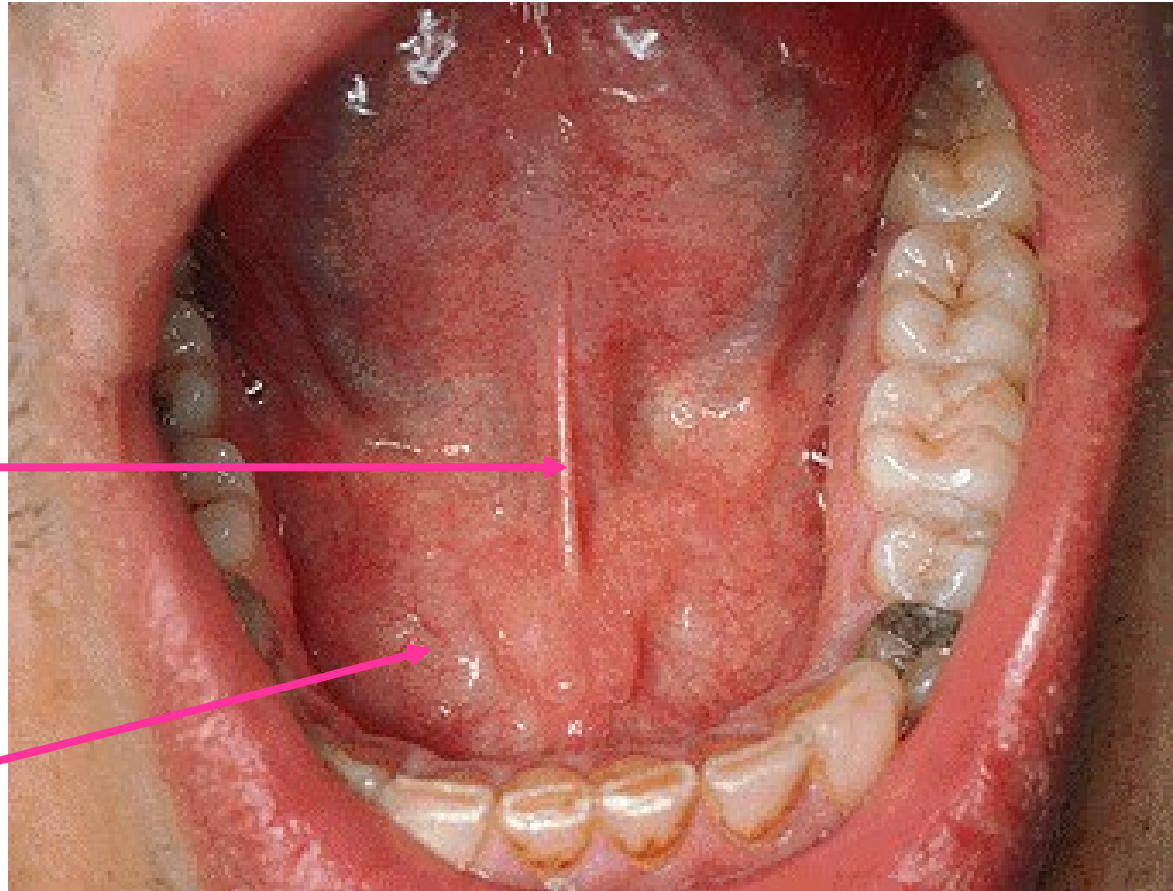
Speicheldrüsen







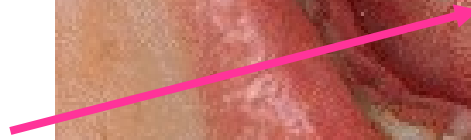
Regio sublingualis



Frenulum
linguae



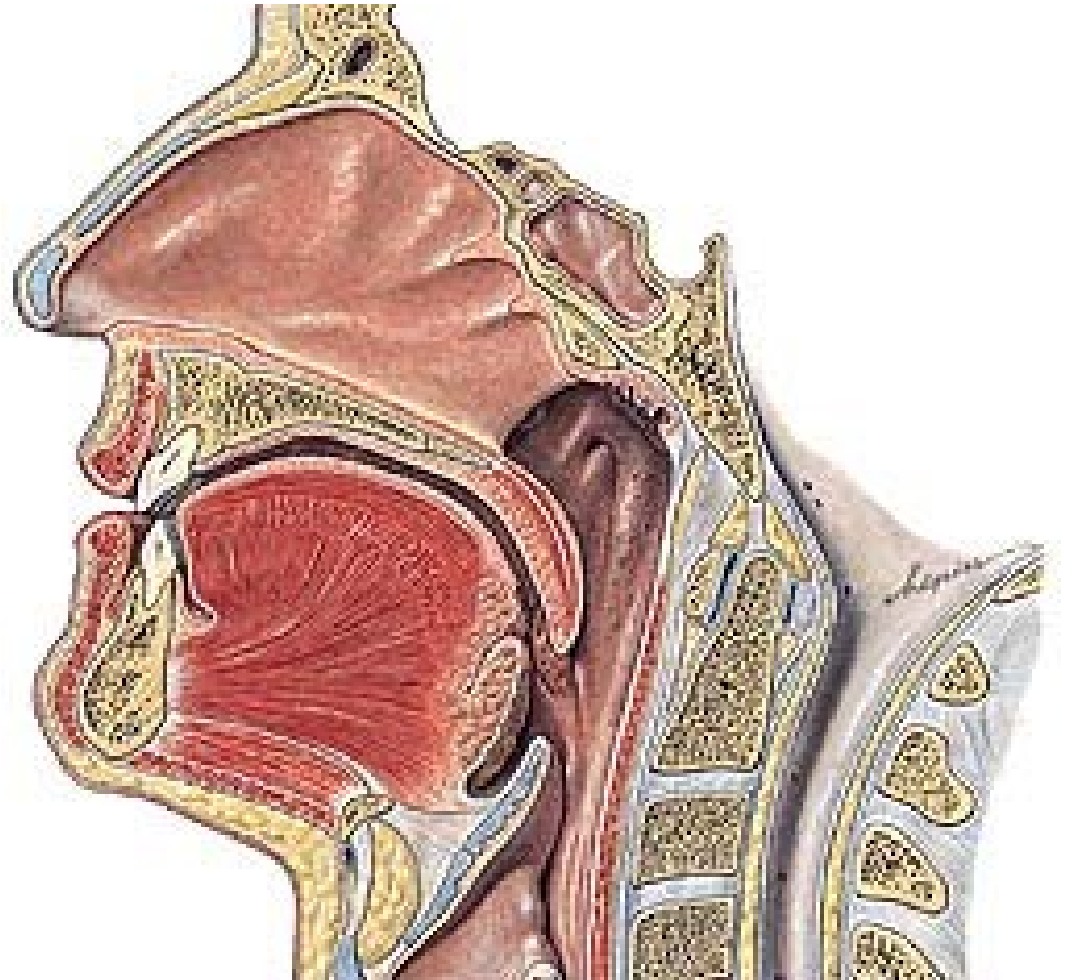
Gl. sublingualis



Waldeyerscher lymphatischer Ring

Tonsillen (Mandeln) um Ishtmus faucium:

- Tonsilla pharyngea
- Tonsillae tubariae
- Tonsillae palatinae
- Tonsillae linguales



Rachen - Pharynx

- Ursprung: Basis cranii

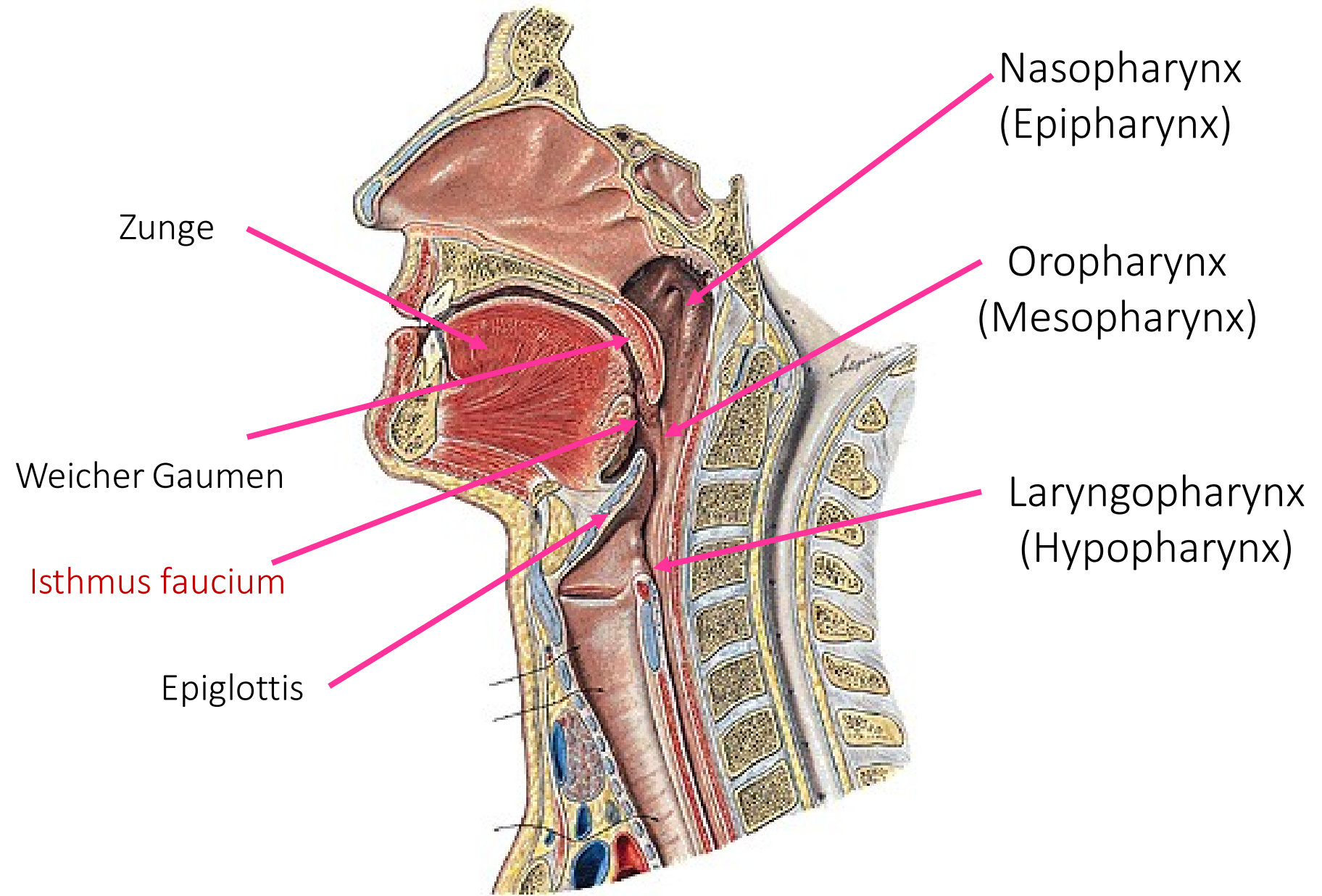
Tuberculum pharyngeum

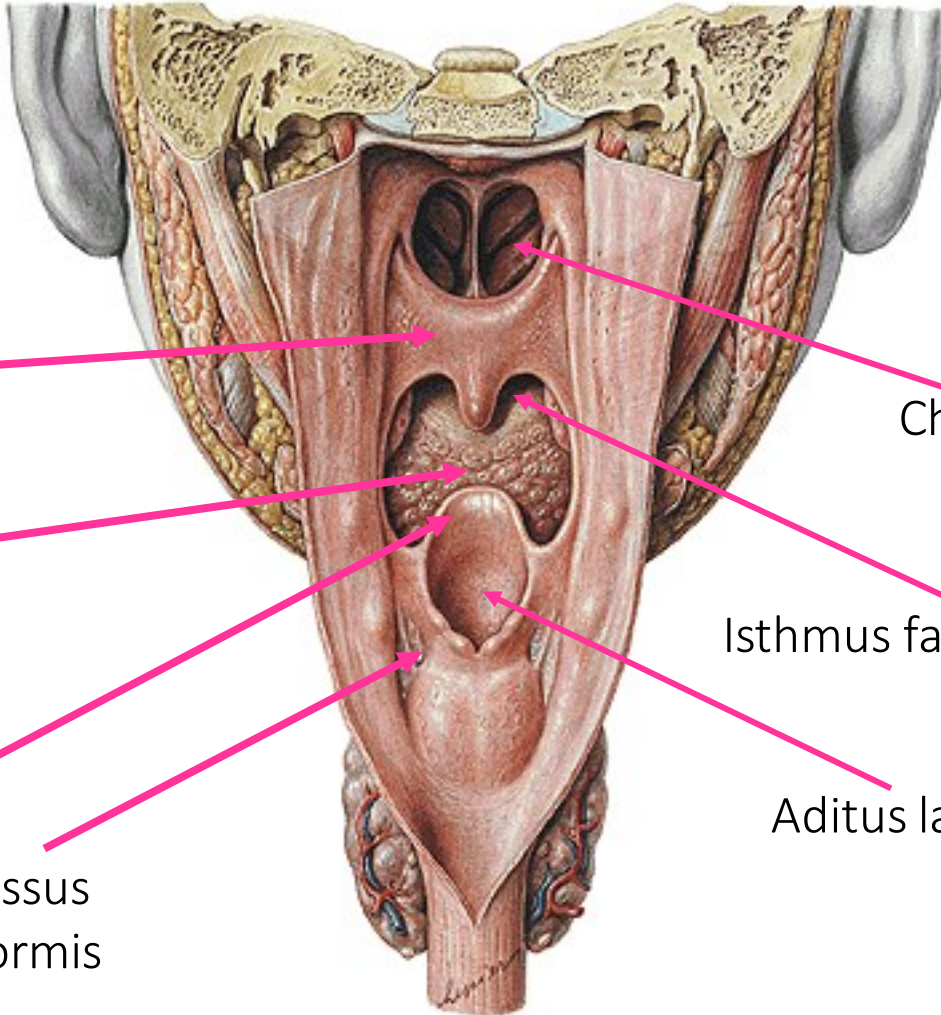
Fossa scaphoidea

Processus pterygoideus

(Lamina medialis)







Weicher Gaumen

Radix linguae

Epiglottis

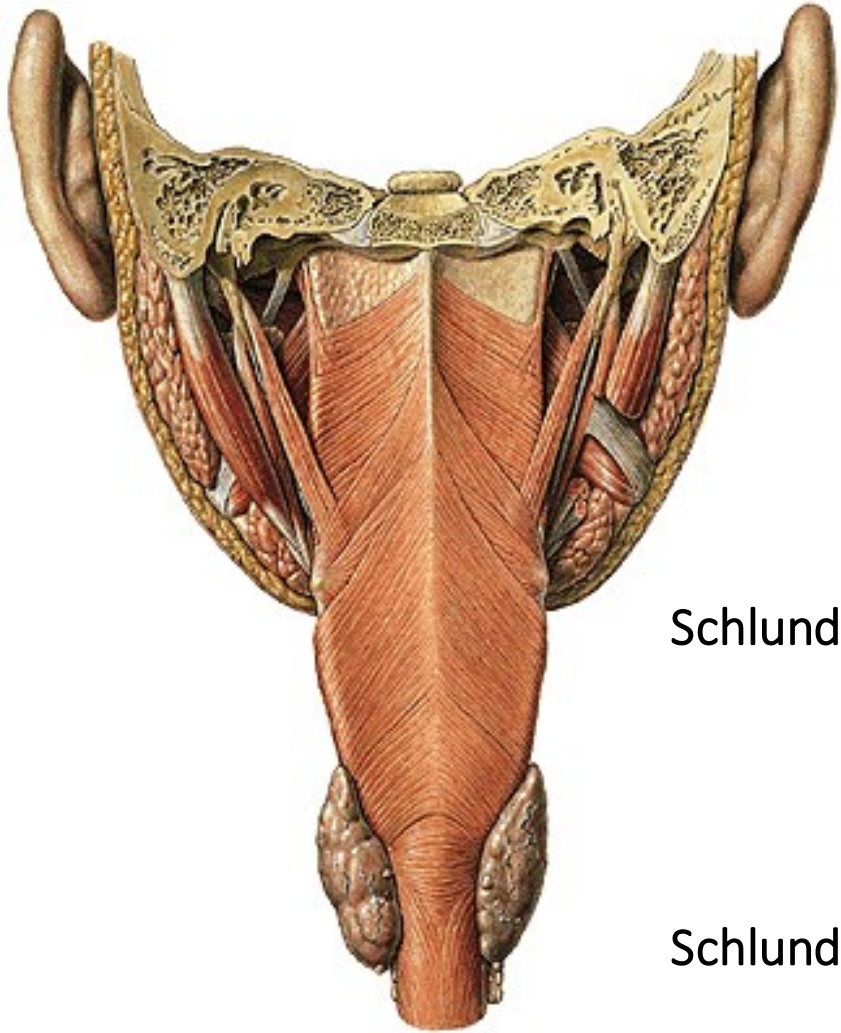
Recessus
piriformis

Choana (Nasenhöhle)

Isthmus faucium (Mundhöhle)

Aditus laryngis (Larynx)

Rachenmuskeln



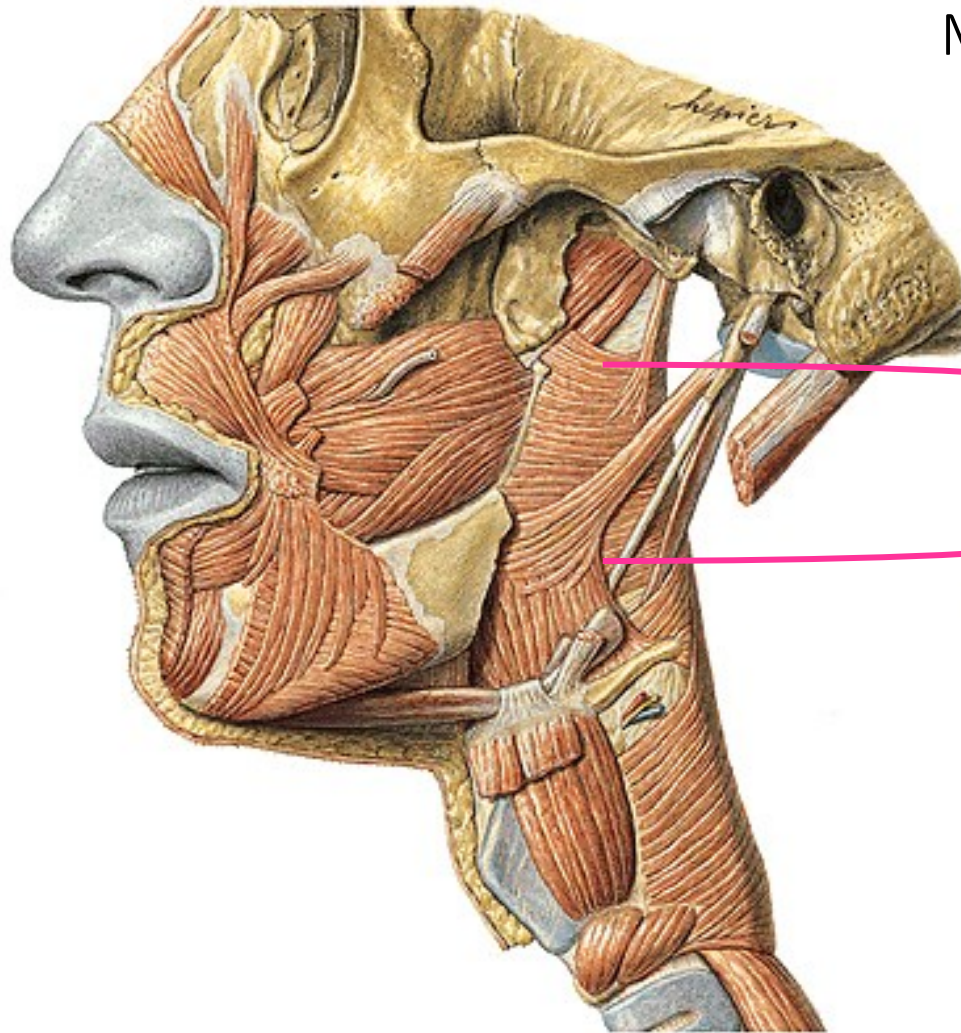
Schlundschnürer: Mm. constrictores pharyngis

- a.) M. constrictor pharyngis sup.
- b.) M. constrictor pharyngis medius
- c.) M. constrictor pharyngis inf.

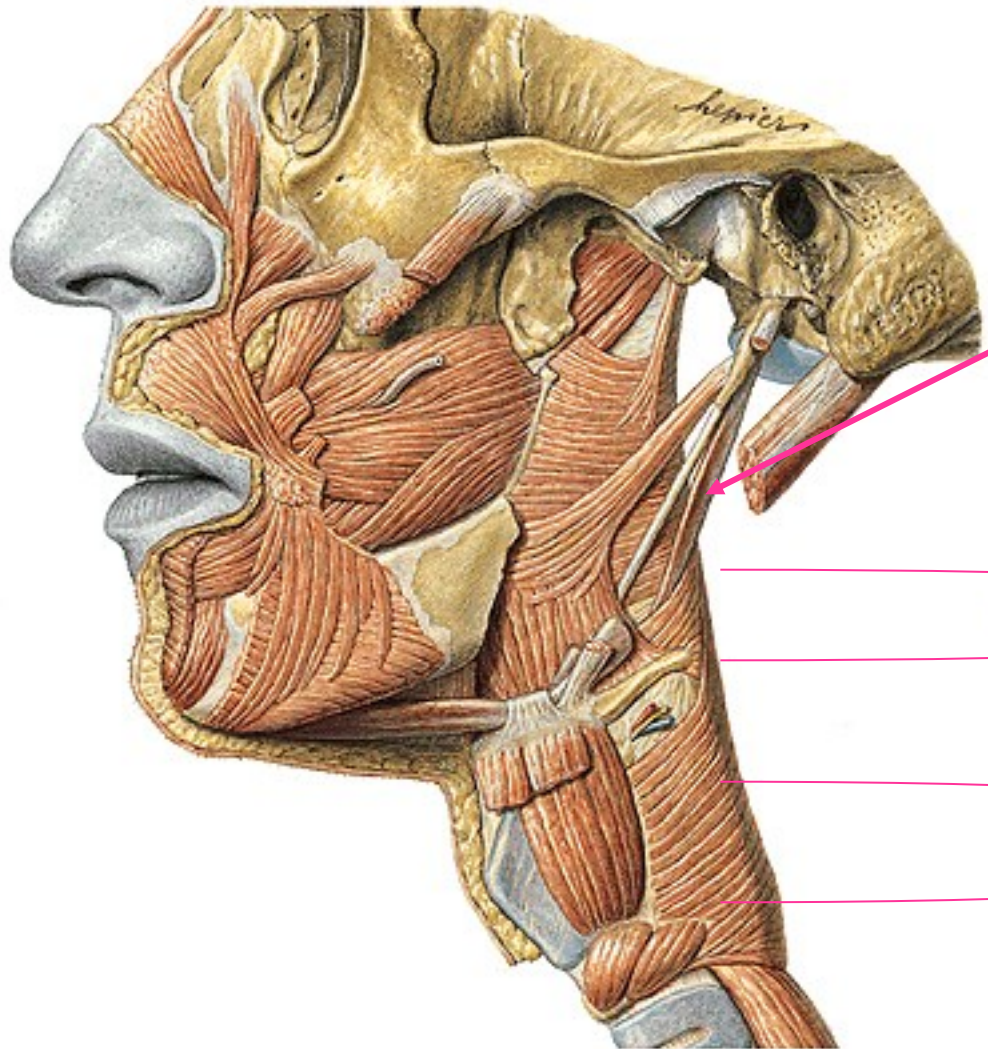
Schlundheber: Mm. levatores pharyngis

- a.) M. stylopharyngeus
- b.) M. salpingopharyngeus
- c.) M. palatopharyngeus

M. constrictor pharyngis sup.



Pars pterygopharyngea
Pars buccopharyngea
Pars mylopharyngea
Pars glossopharyngea



M. stylopharyngeus

M. constrictor
pharyngis medius:
P. chondropharyngea
P. ceratopharyngea

M. constrictor
pharyngis inf.
P. thyropharyngea
P. cricopharyngea

Speiseröhre (Oesophagus)

40 cm



1.) *Pars cervicalis*: Ösophagusmund:

C6 (Ringknorpel)

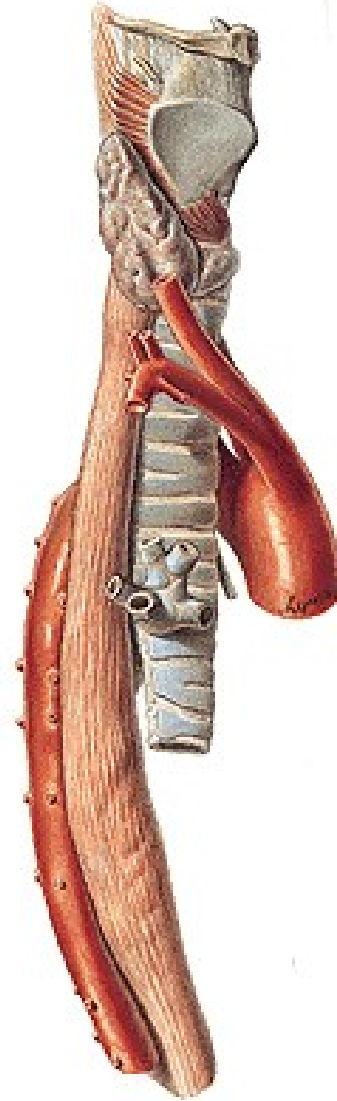
2.) *Pars thoracica*: in Mediastinum post.

Hiatus oesophageus: durch das Zwerchfell

Th 11-12

3.) *Pars abdominalis*: Cardia



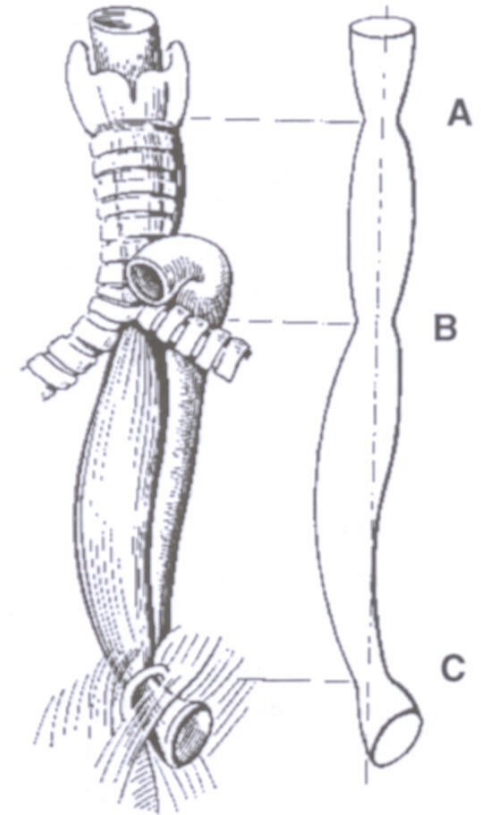


Ösophagusengen (physiologische):

- 1.) 15 cm von Zähnen: Pharynx-Ösophagus Übergang – Cartilago cricoidea (Ringknorpel)
- 2.) **Aortenenge:** 24cm von Zähnen: Aortabogen und der linke Bronchus principalis
- 3.) 40 cm von Zähnen: Cardia (Sphincter)

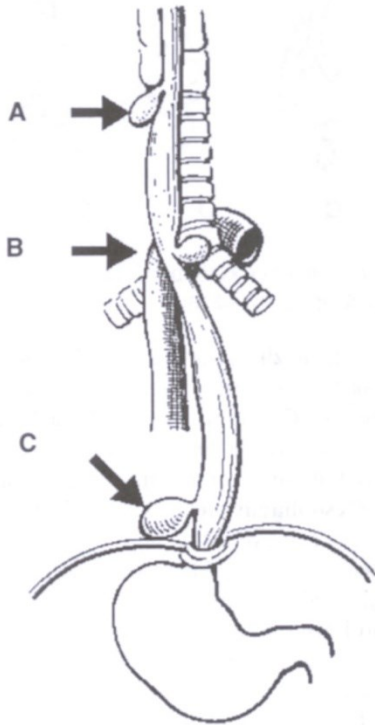
Weitere Engen können verursacht sein von:

vergrößerte Lymphknoten,
vergrößerte Schilddrüse,
Aorta-Aneurizma,
Mitralklappenproblem, (Stenosis, Insufficiencia),
Tumor in Mediastinum

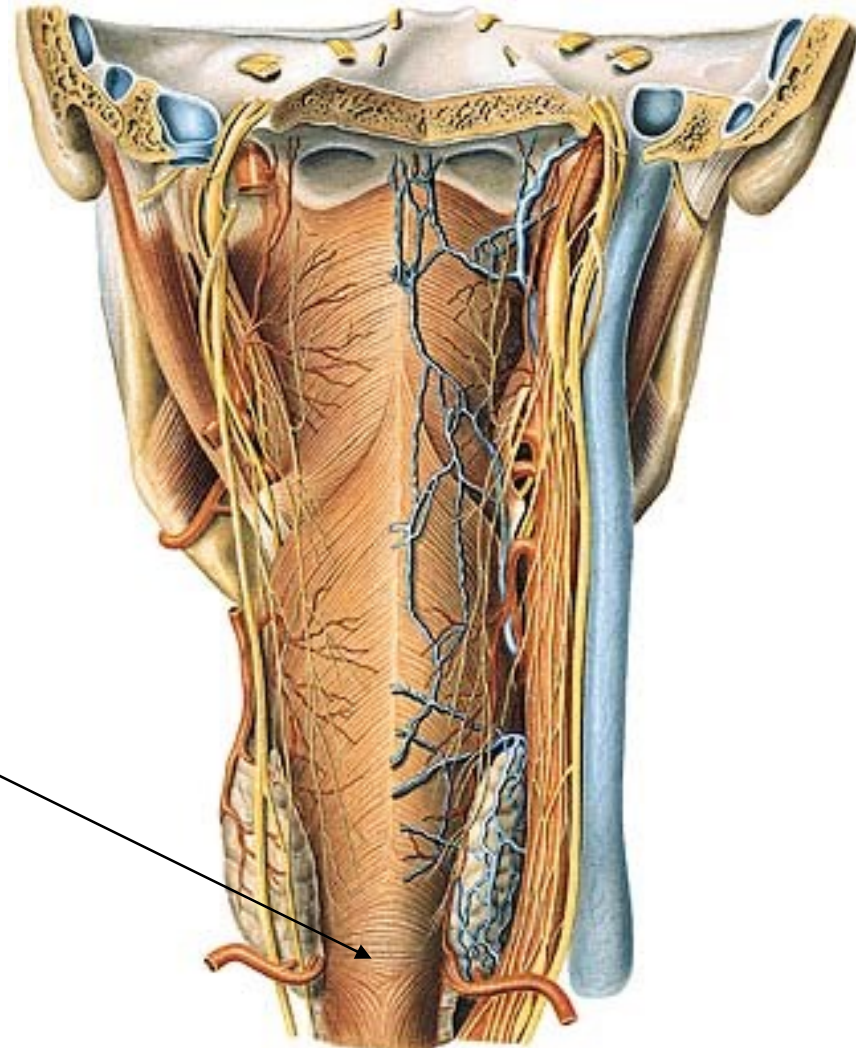


Erweiterungen: (Diverticulum)

- 1.) bei Rachen-Speiseröhre Übergang
(Laimer-Dreieck: fehlt die longitudinale Muskelbündel, hier ist nur Ringmuskel)
- 2.) bei Hiatus oesophageus



Laimer-Dreieck



Literatur

Dr. Anna Németh: Verdauungssystem I.

Dr. Andrea Székely: Isthmus fautum

Dr. Erzsébet Fehér: Szájüreg

Dr. Orsolya Kántor: Isthmus fautum