

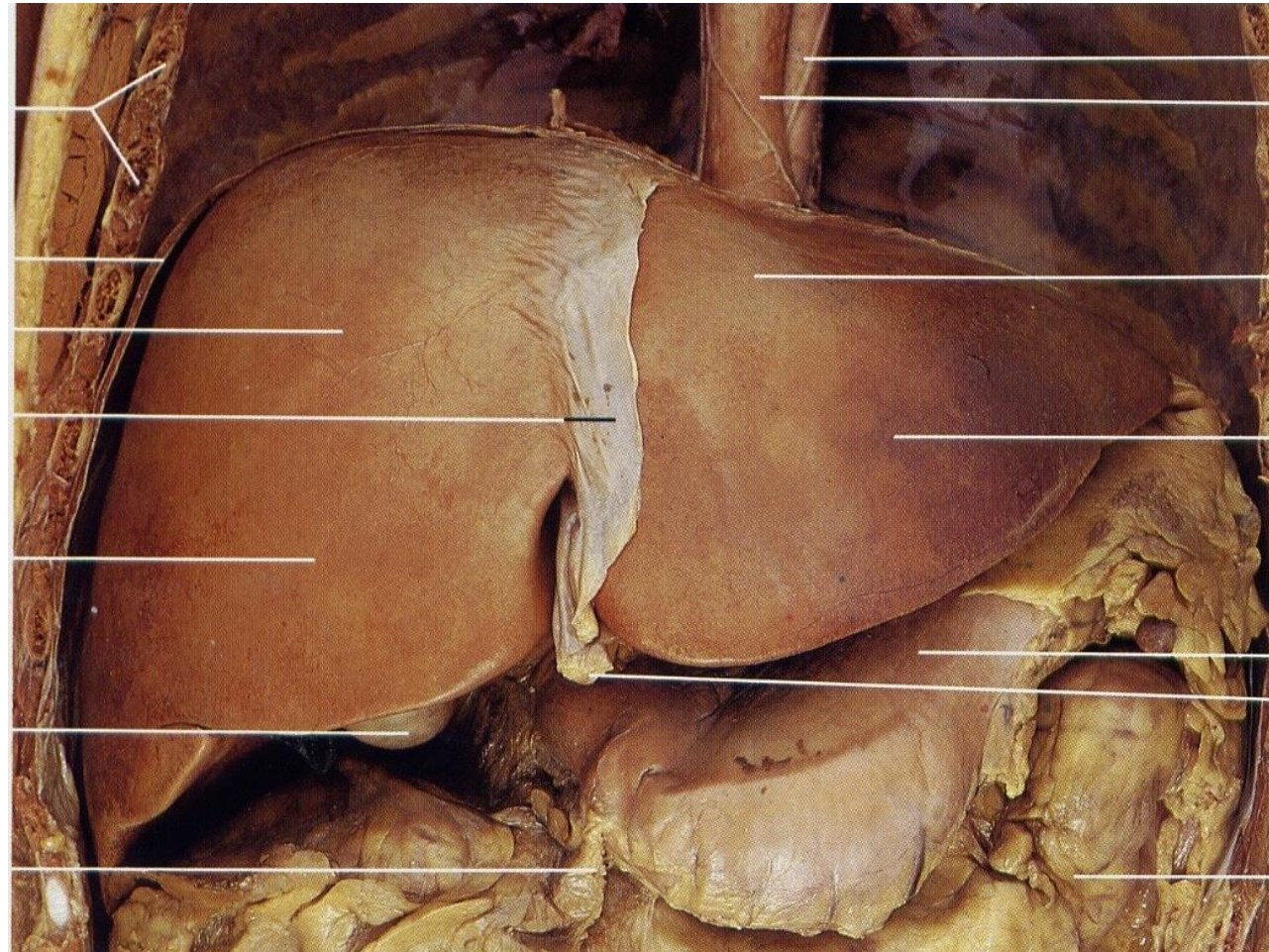
# Hepar, pancreas, peritoneum Hasüreg, hasfal szerkezete

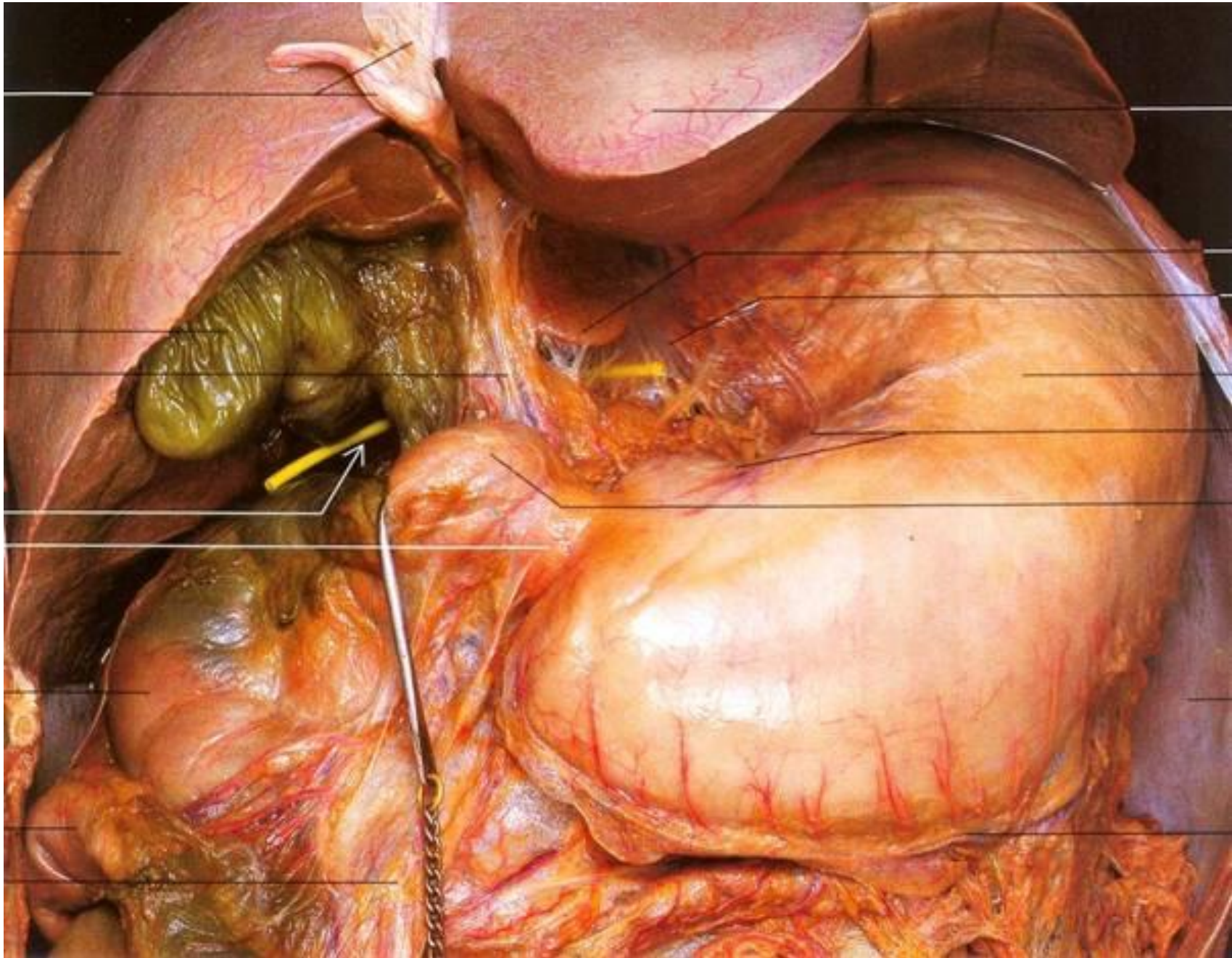
Dr. Szuák András

2019.03.18.

# Hepar (máj)

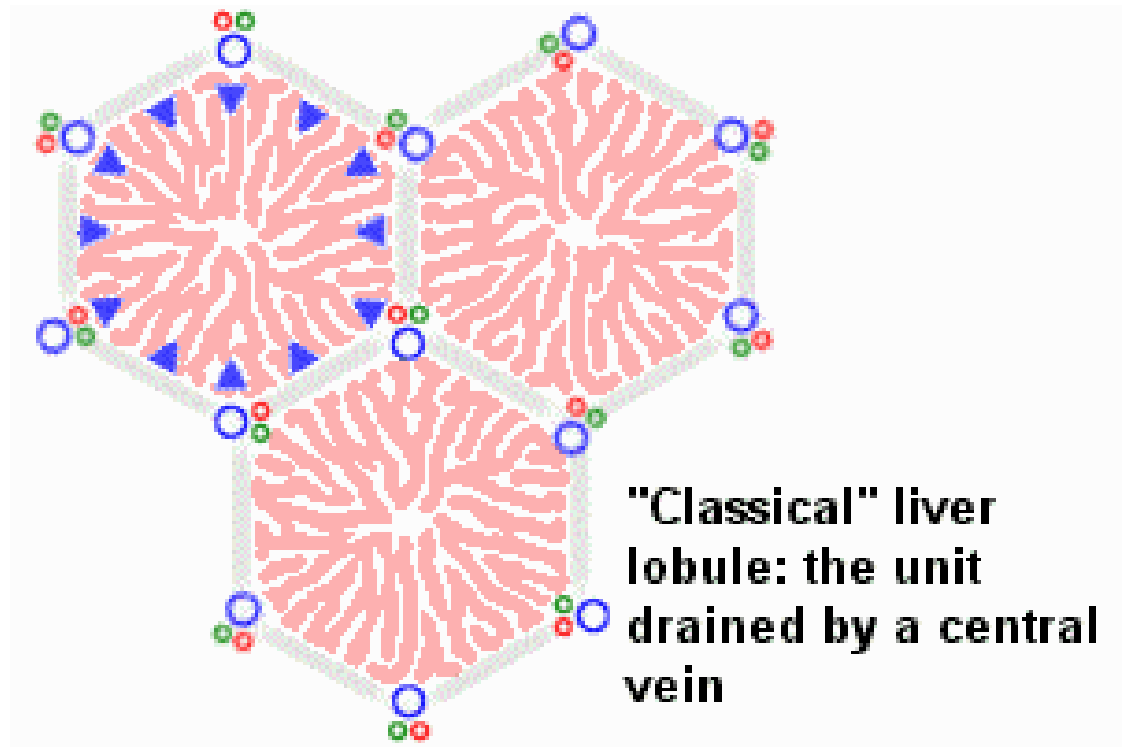
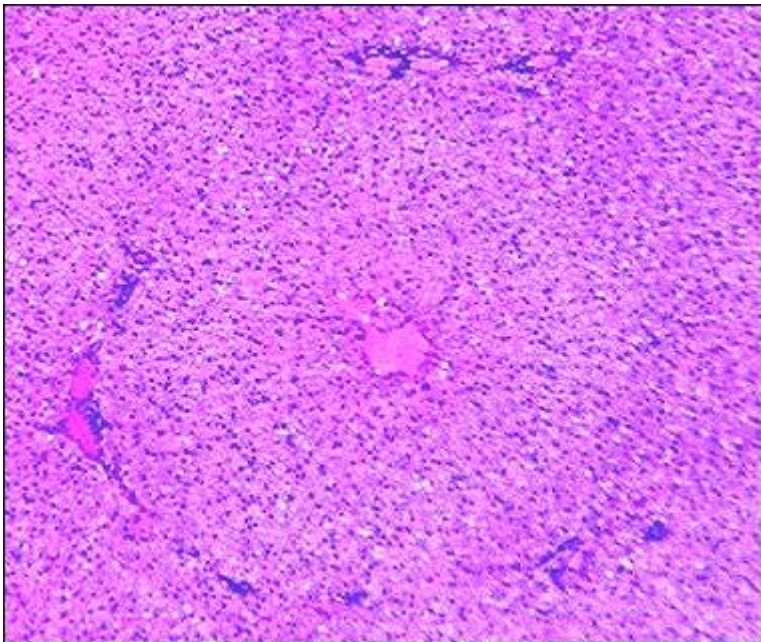
- Anyagcsere (szénhidrát, lipid és fehérje is)
- Epetermelés
- Méregtelenítés
- Véralvadás
- Raktár (vér, glikogén...)



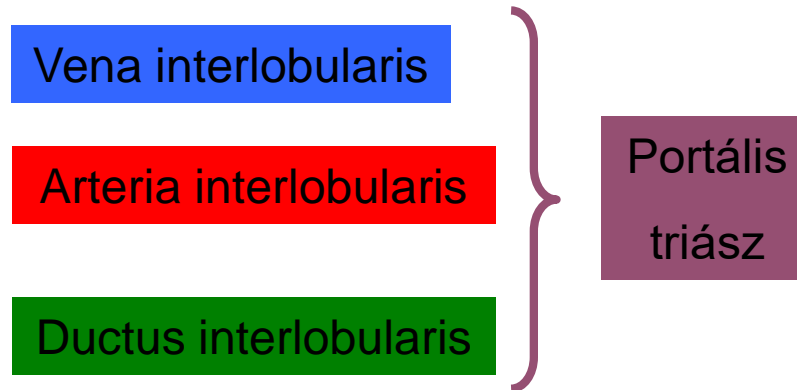
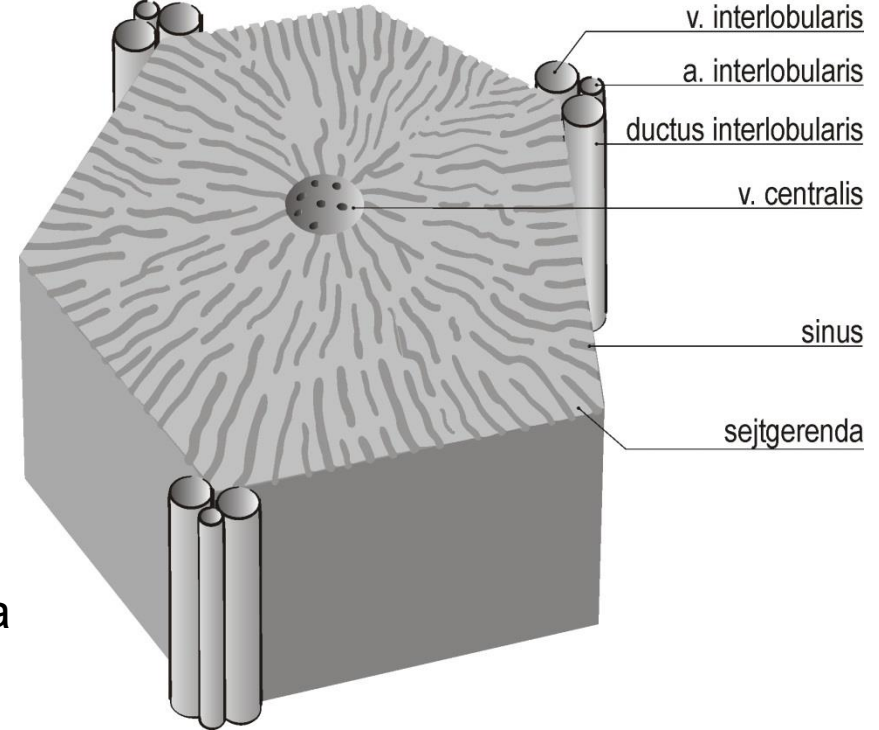
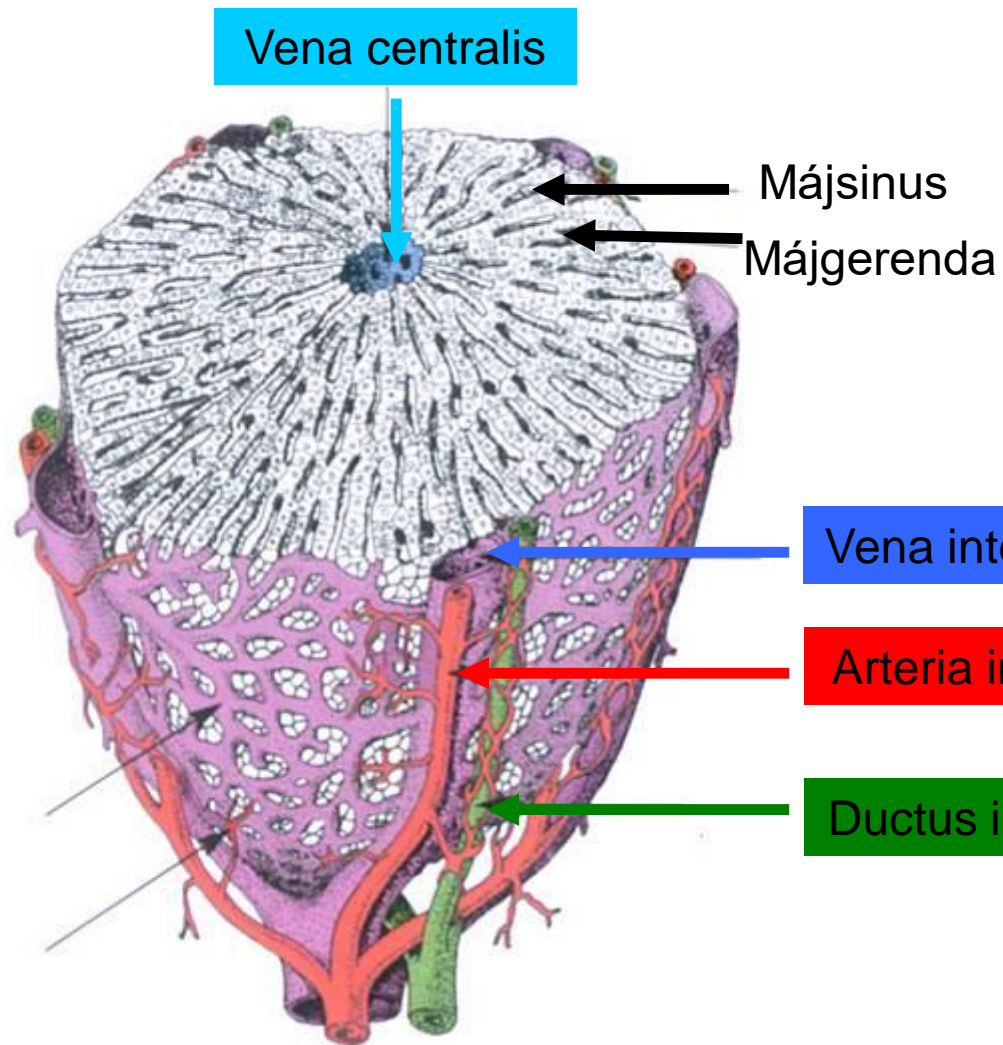


# A máj szövettana

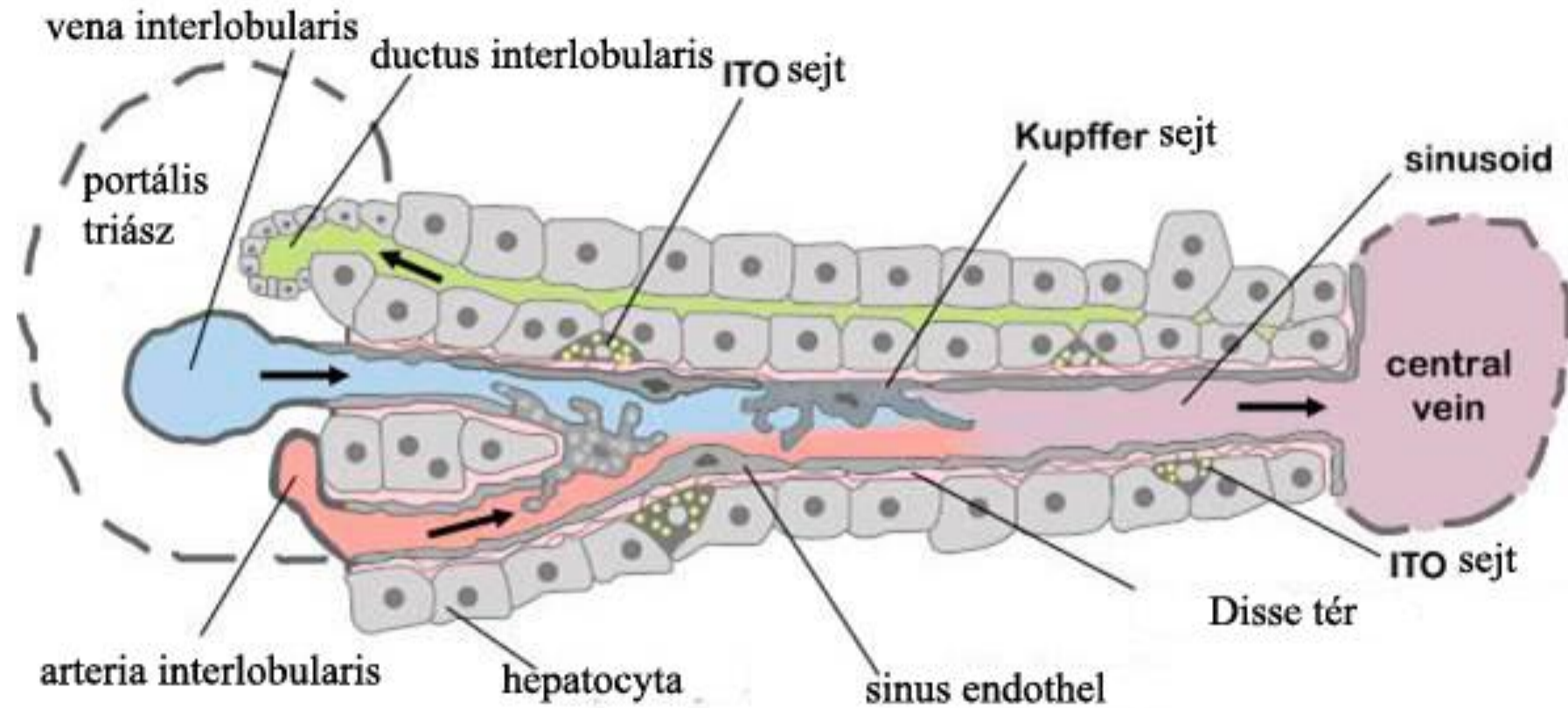
- Lobulus hepatis– hatszögletű szöveti egység (lobulus portalis, acinus)
  - Portális triász – artéria, vena portae, epevezeték
  - Májsinusok a májgerendák között
  - Véna centralis



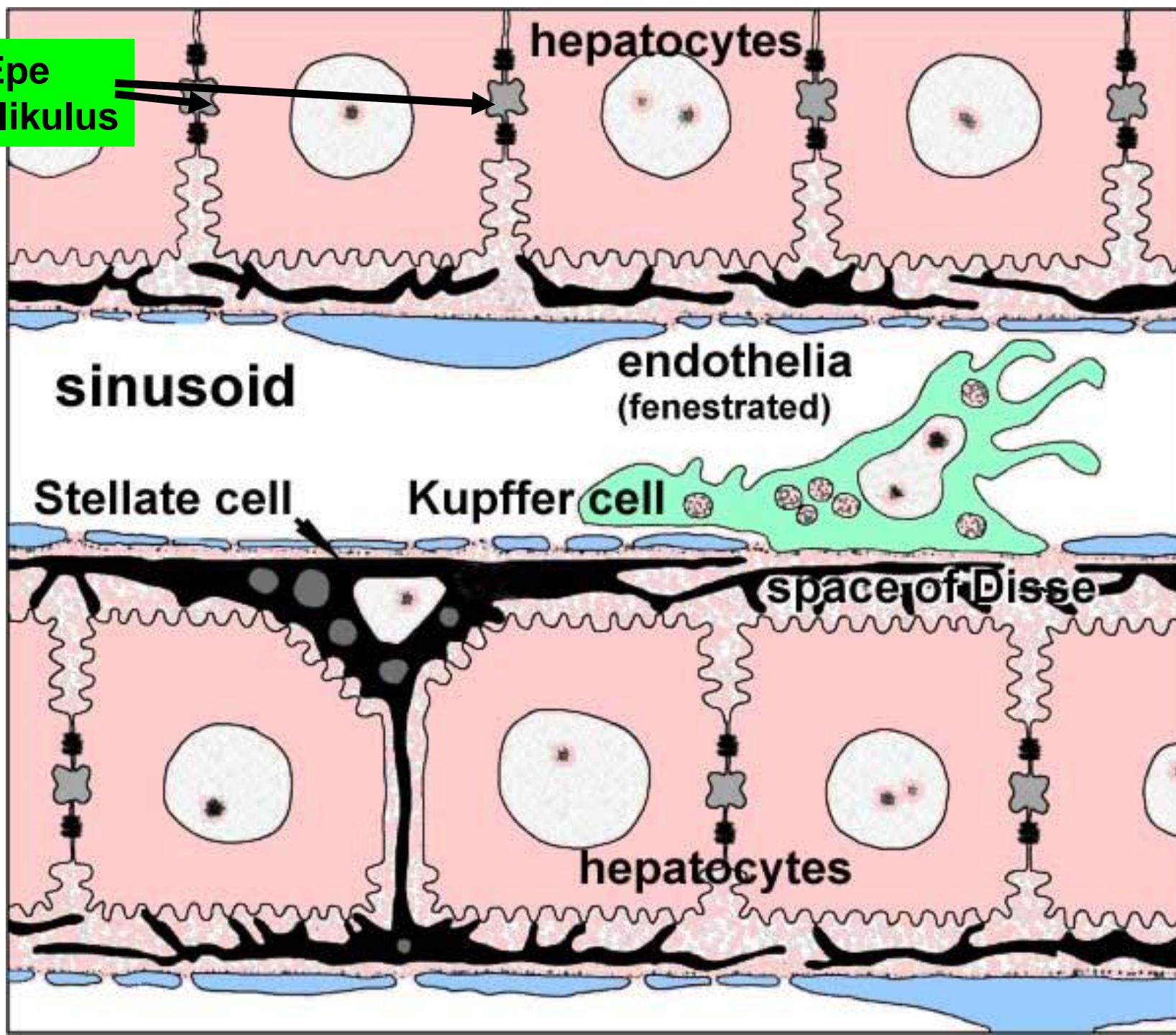
# Lobulus hepatis / Májlebenyke



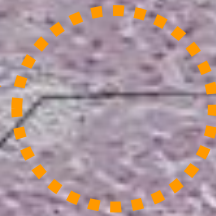
# Máj sinus



Epe  
kanalikulus



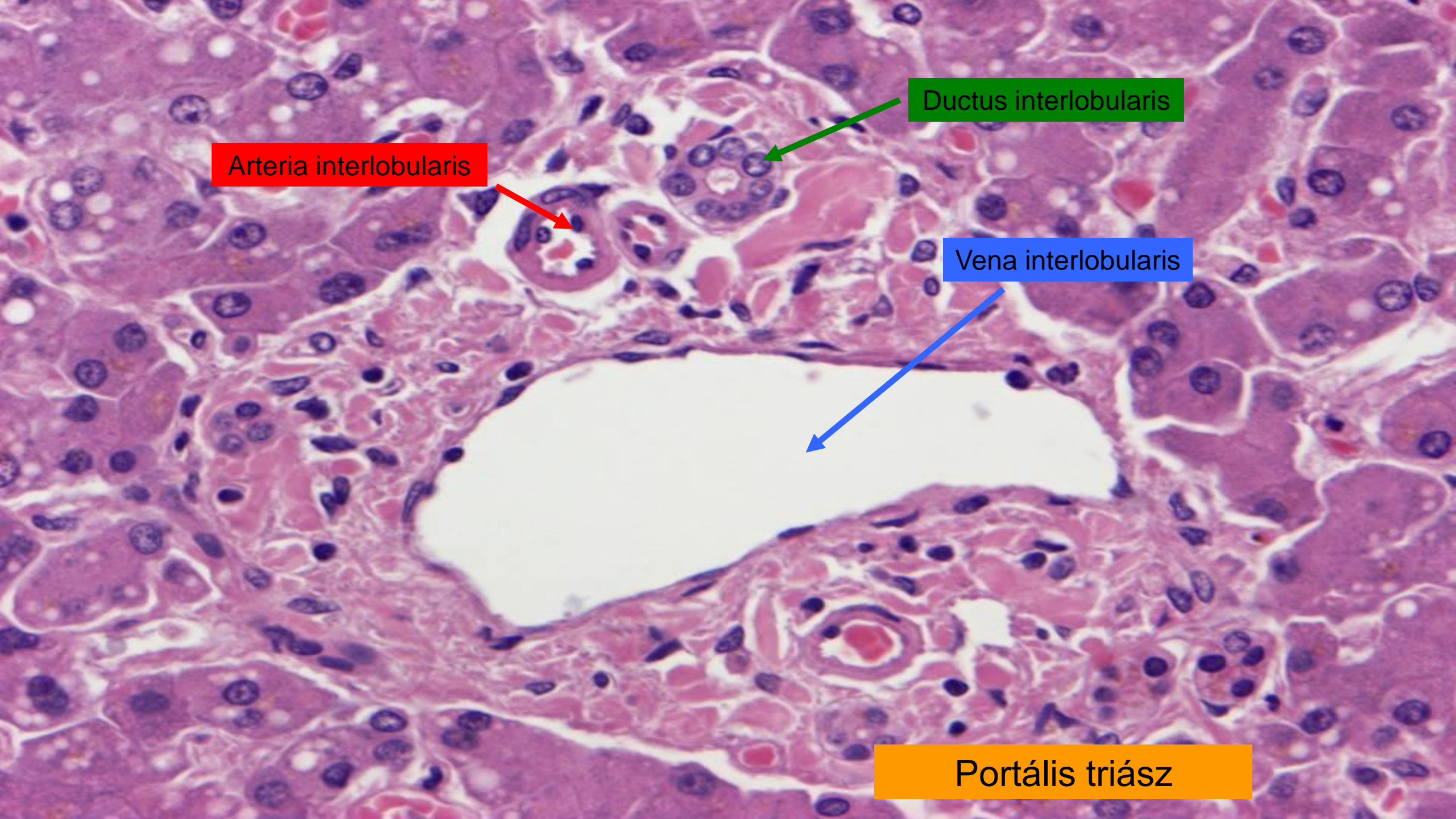
Portális  
triász



Vena centralis





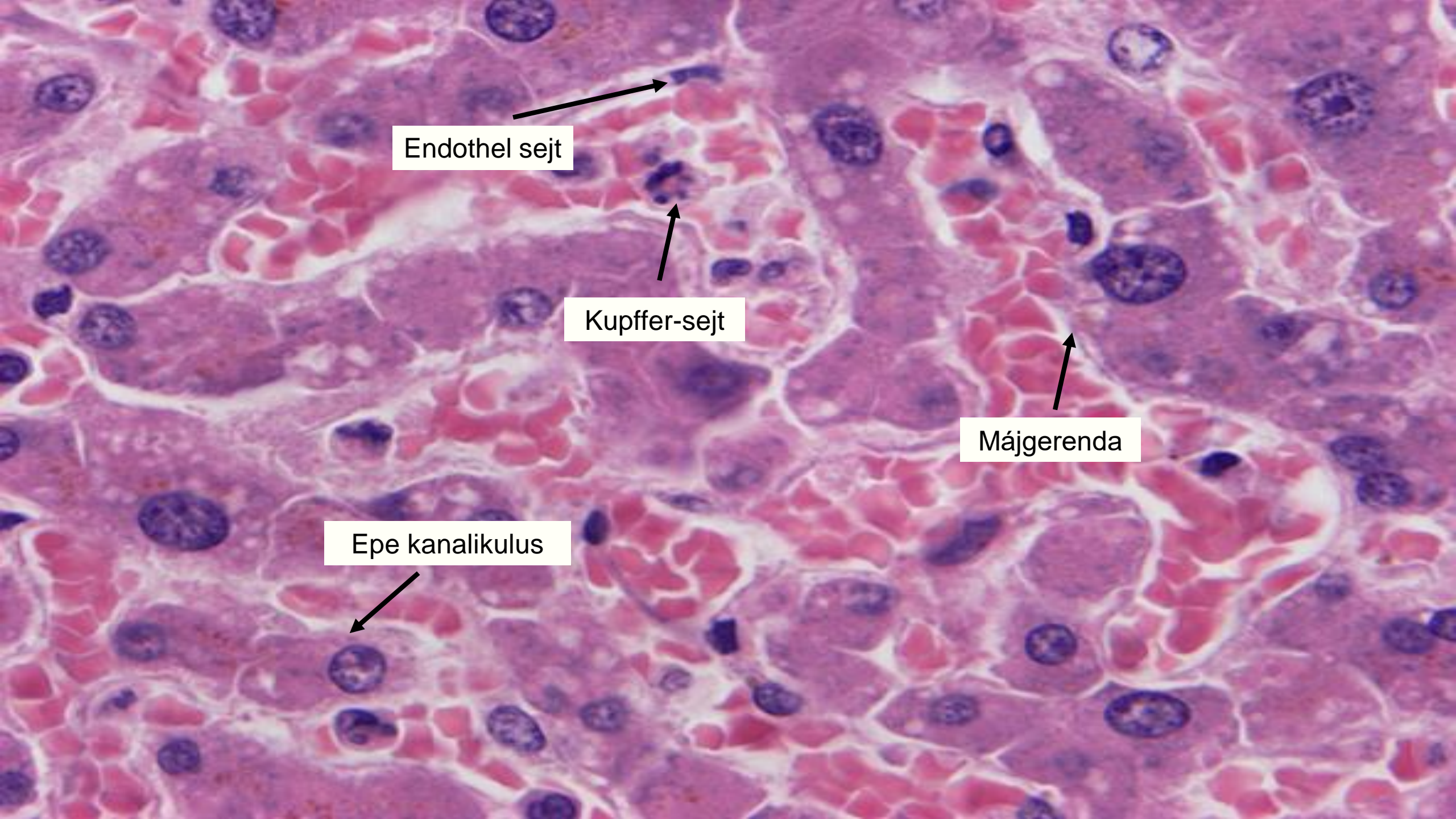


Arteria interlobularis

Ductus interlobularis

Vena interlobularis

Portális triász



Endothel sejt

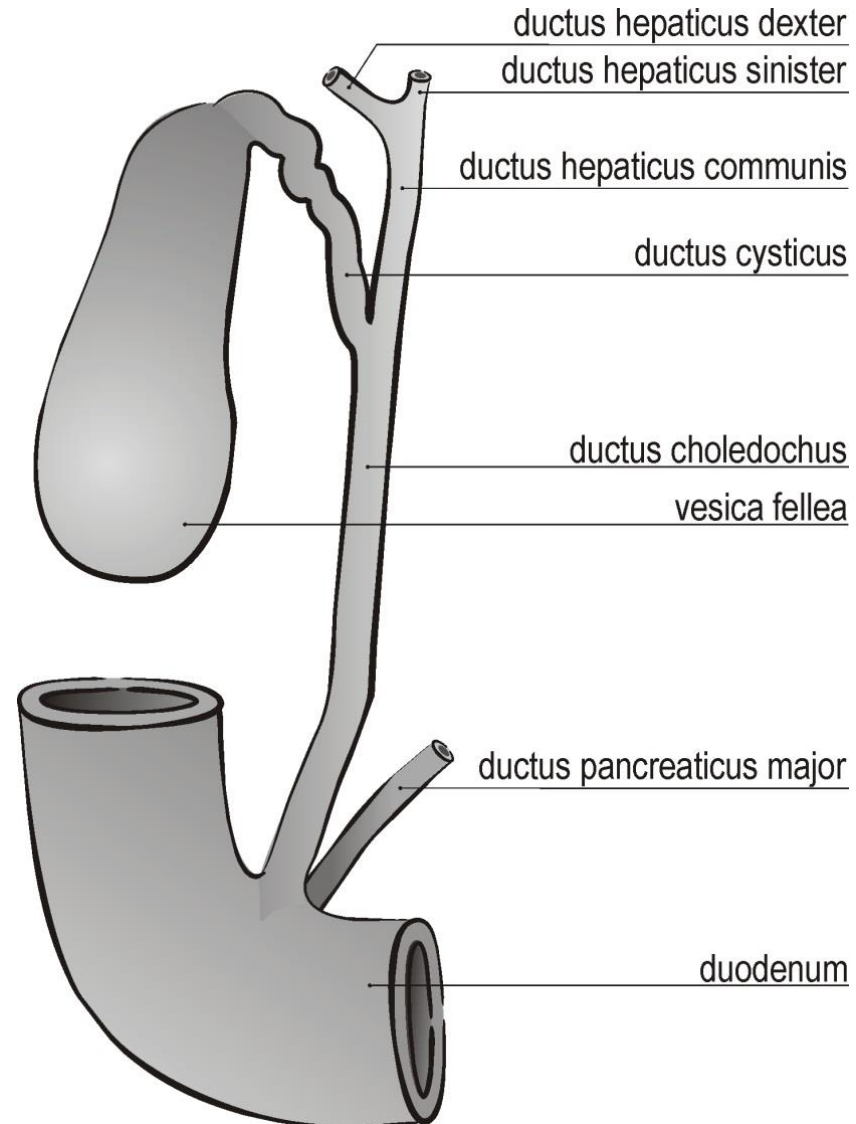
Kupffer-sejt

Májgerenda

Epe kanalikulus

# Vesica fellea (epehólyag)

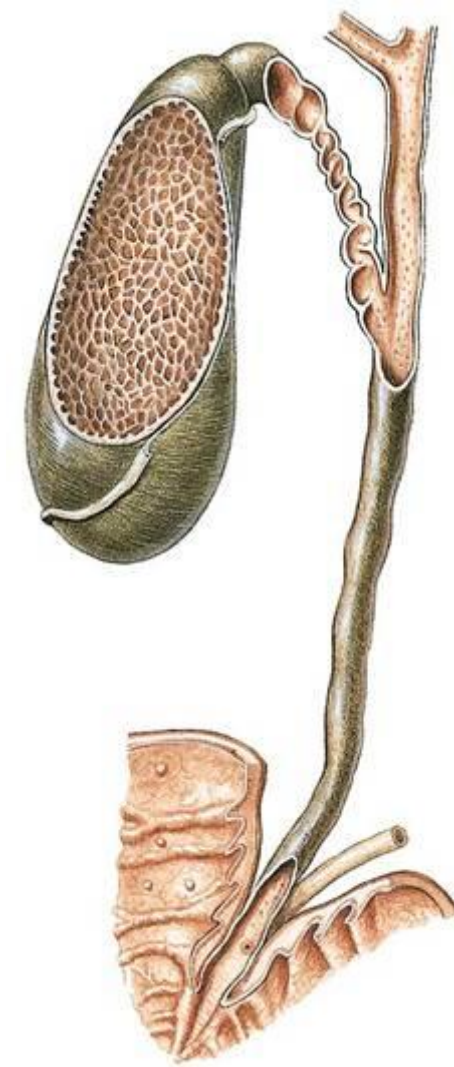
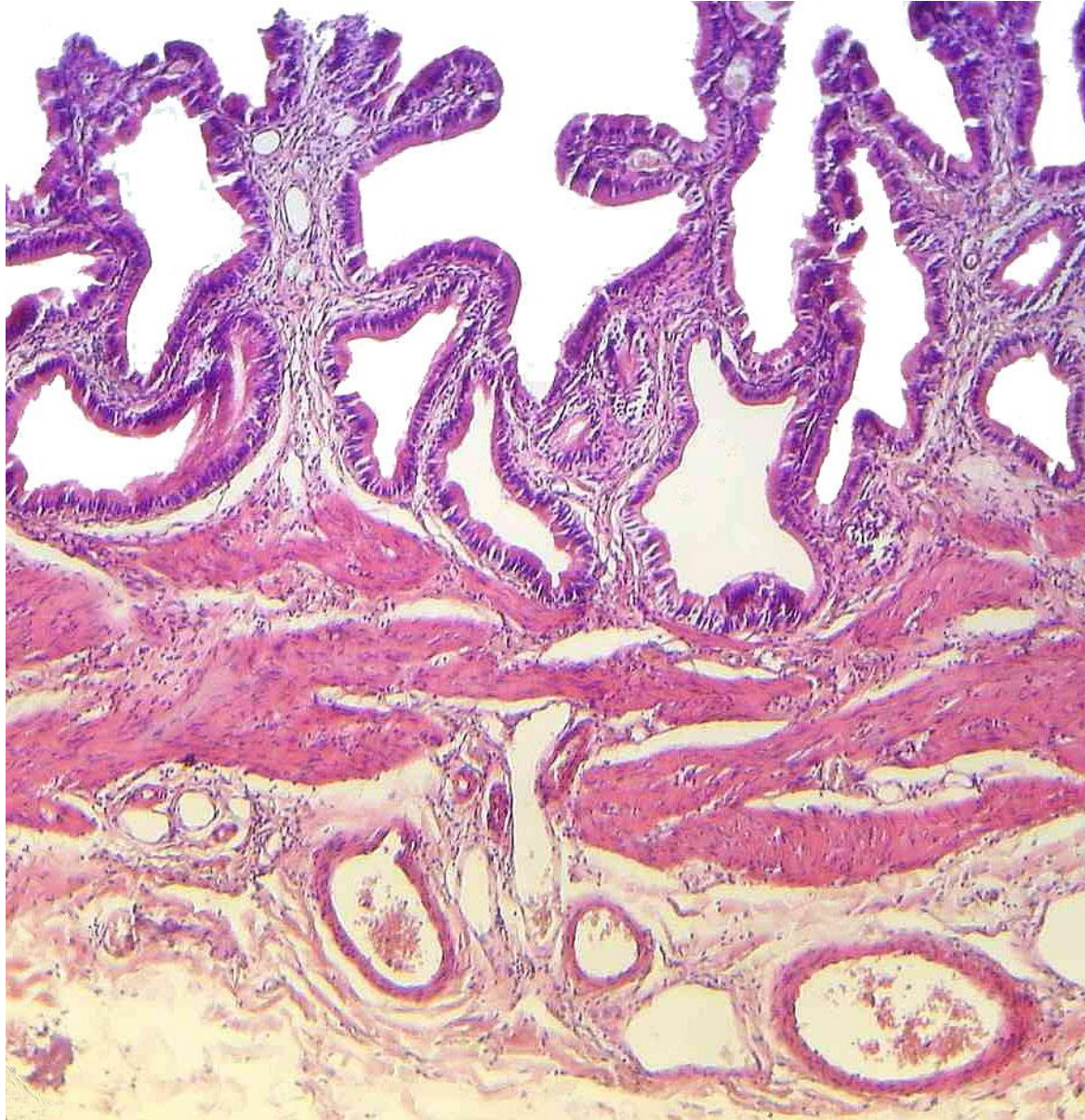
- NEM termeli az epét!
- Csak raktározza, módosít az összetételén.



# Vesica fellea szövettana

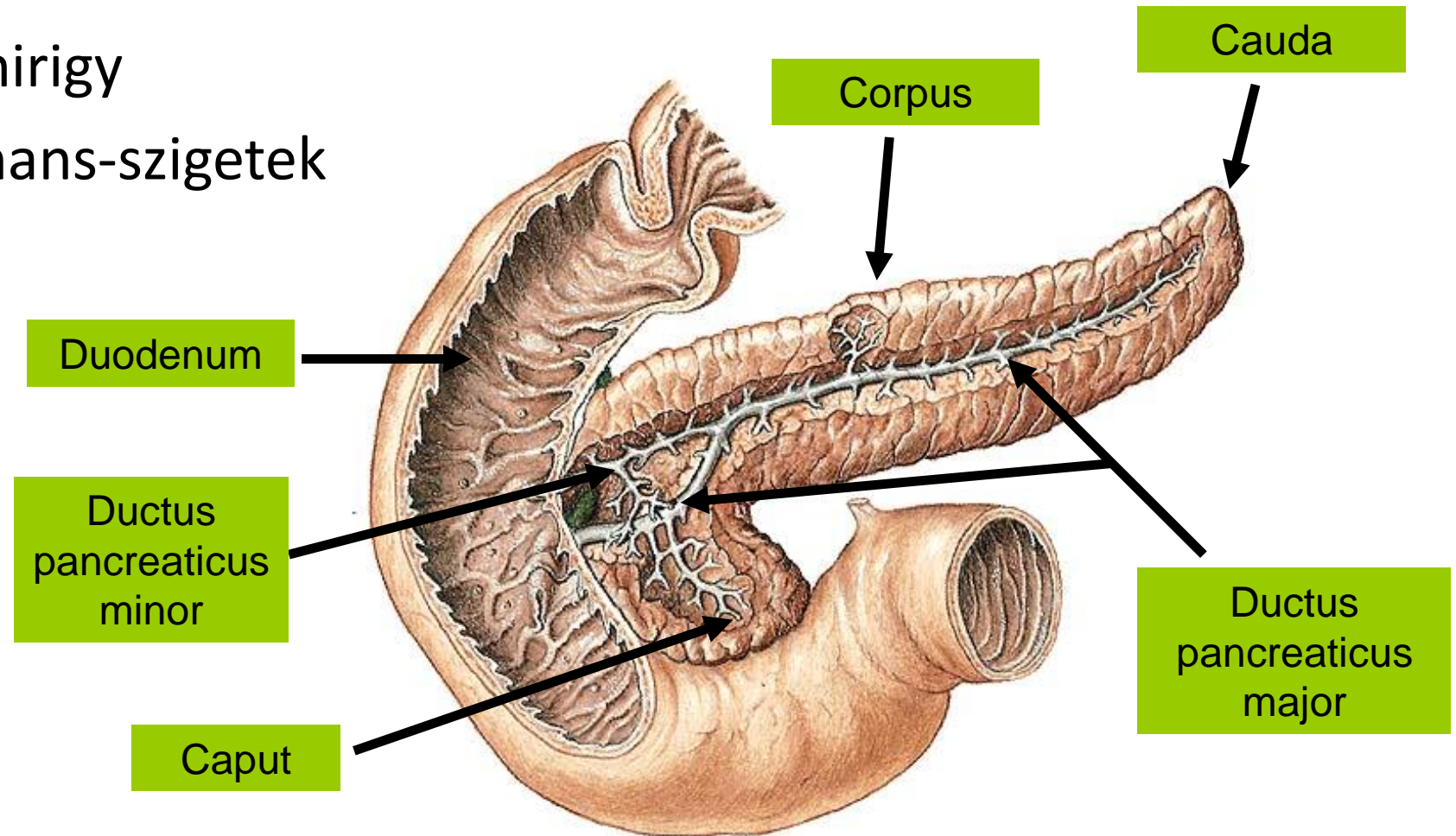
- Egyrétegű hengerhám
- Lamina propria – mirigyek, lymphocyták
- Nincs Muscularis mucosae!
- Nincs Tunica submucosa!
- Tunica muscularis
  - körkörös, hosszanti és ferde lefutás
- Tunica serosa vagy Adventitia

# Vesica fellea



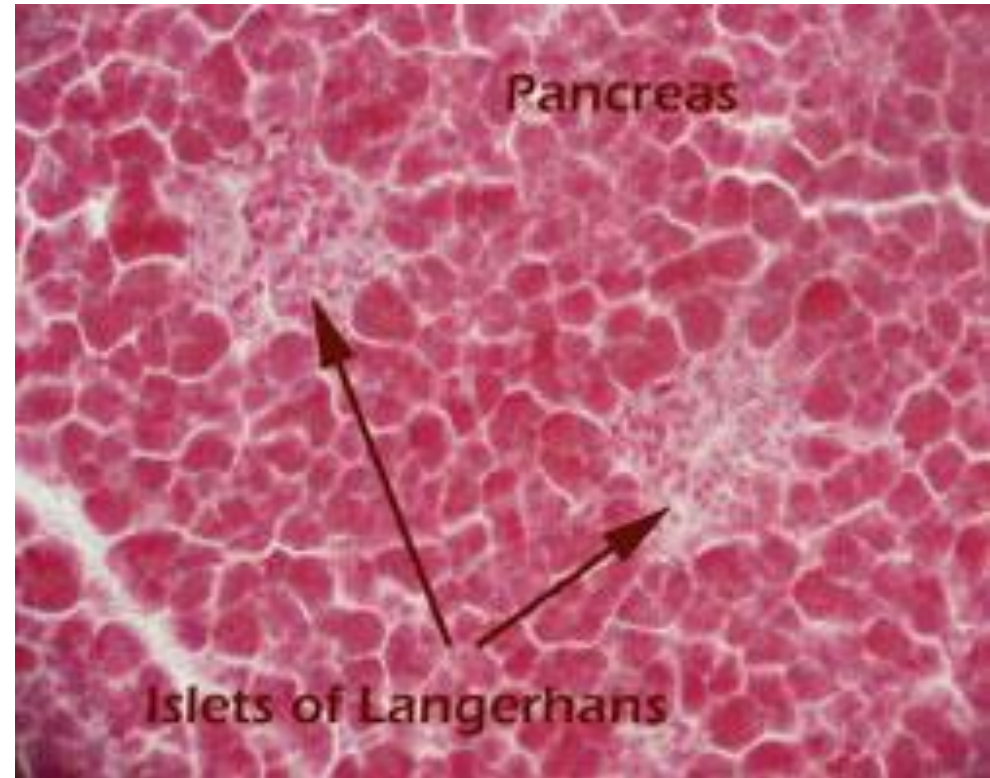
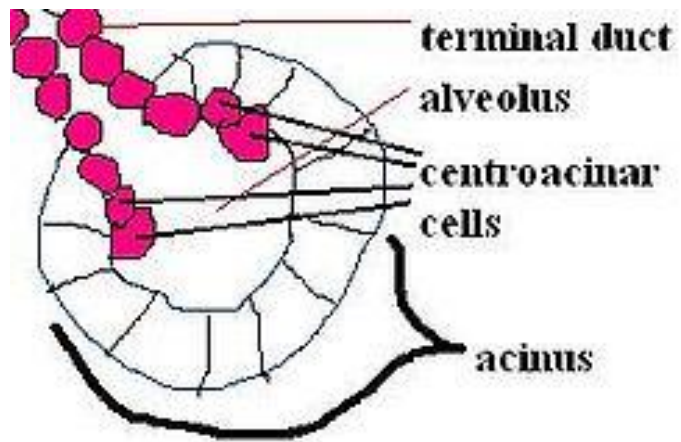
# Pancreas (hasnyálmirigy)

- Exocrin: szerózus mirigy
- Endocrin – Langerhans-szigetek

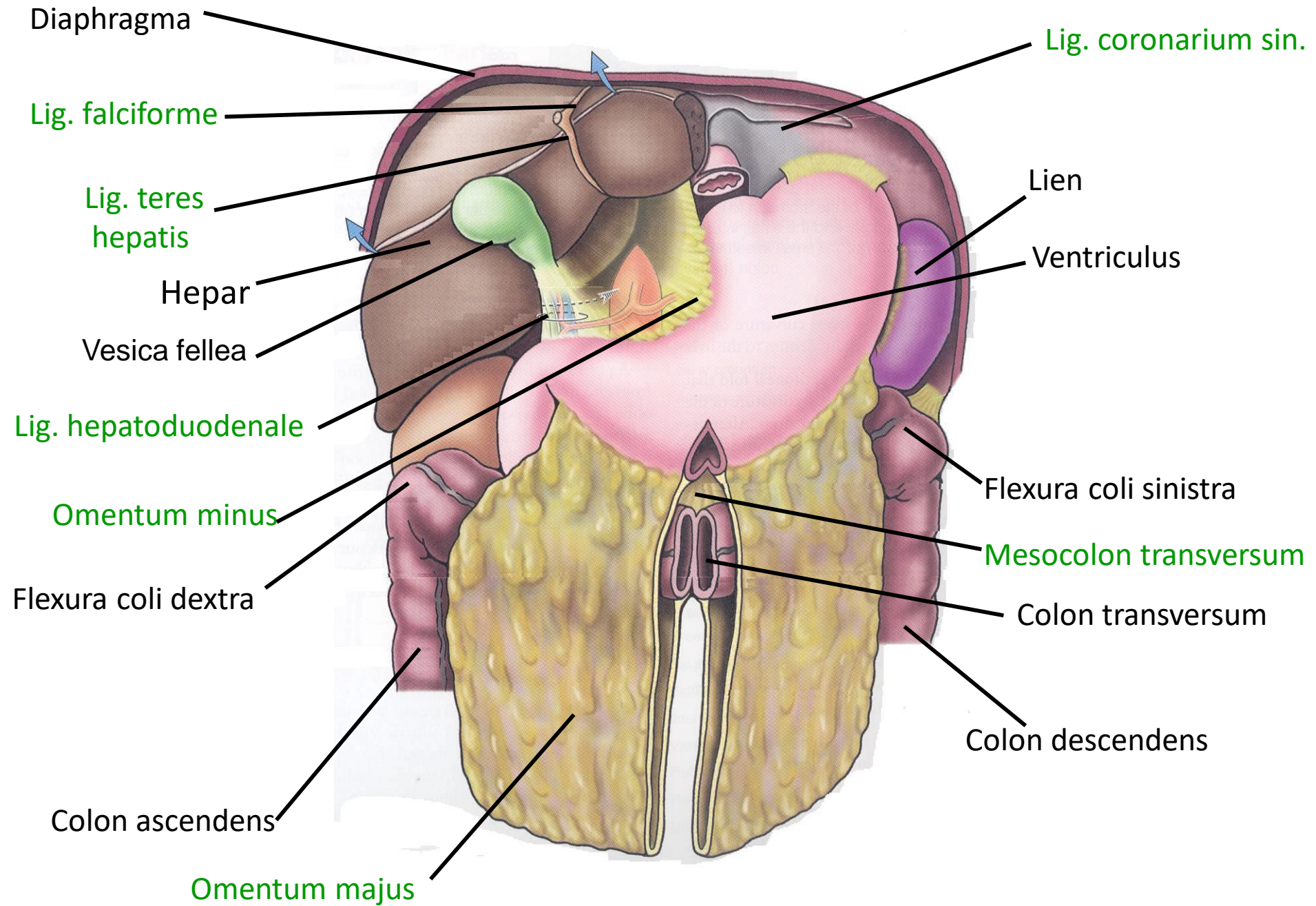


# A pancreas szövettana

- Szerózus mirigy
- Centroaciner sejt

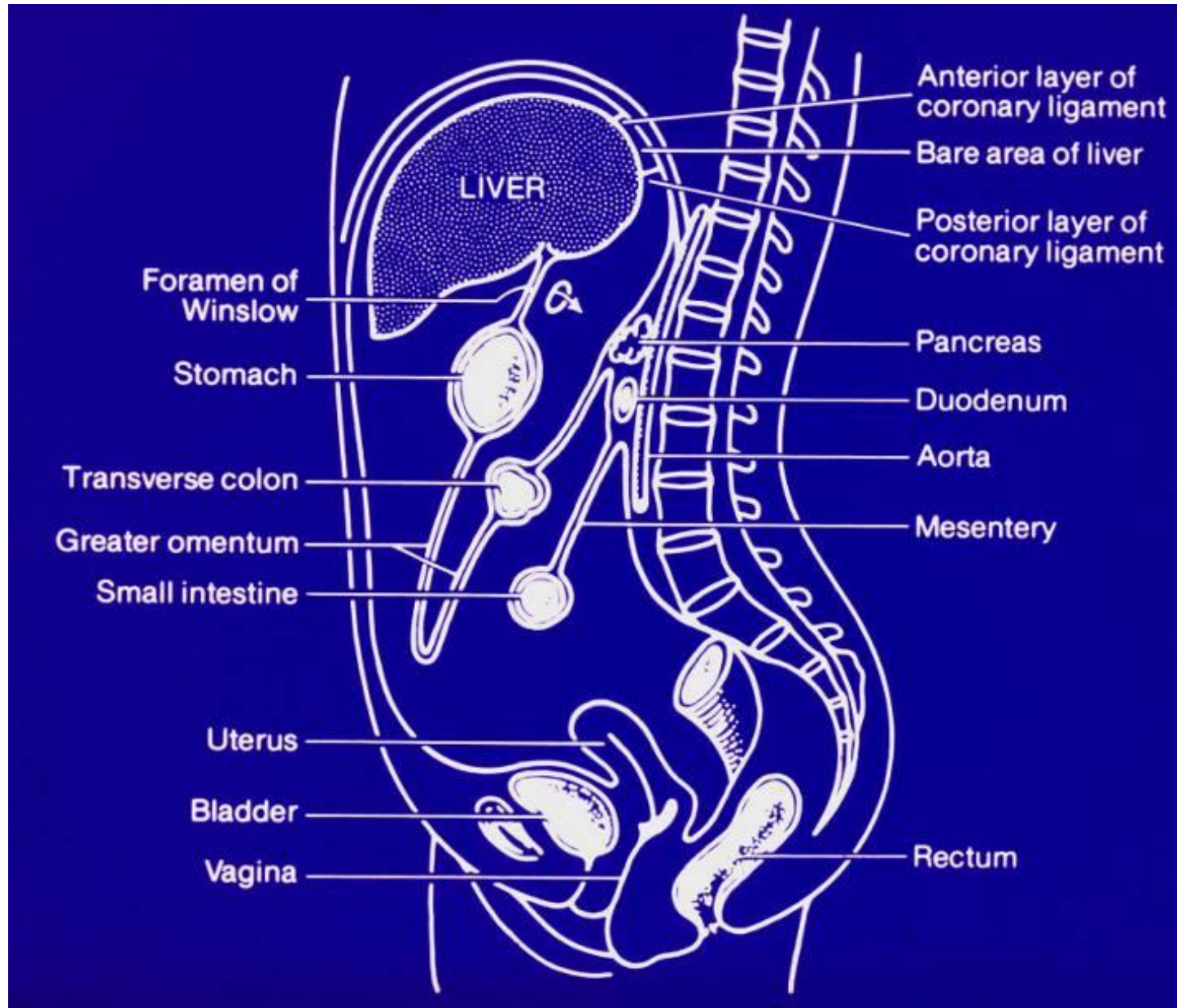


- Langerhans szigetek– endocrin rész

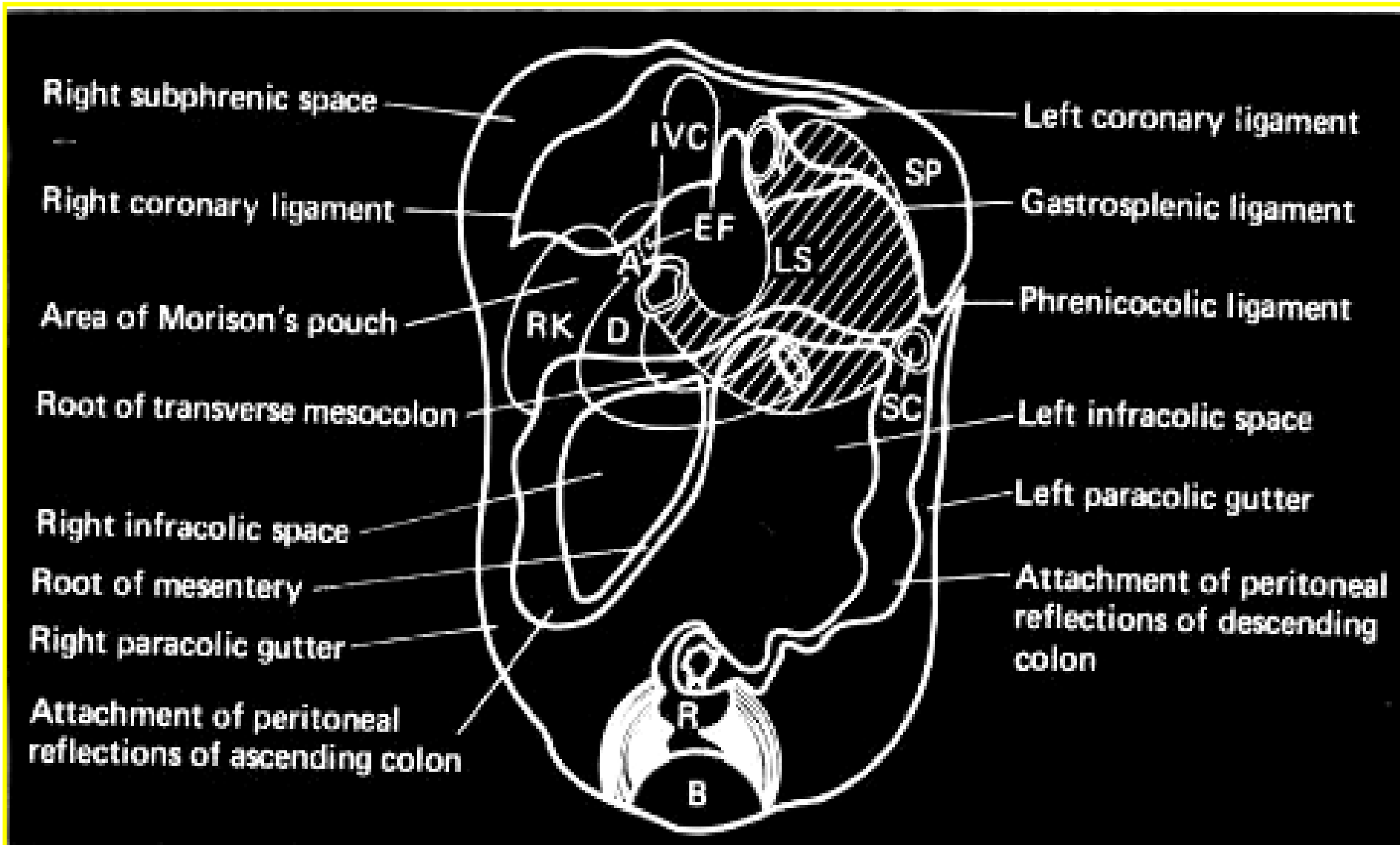




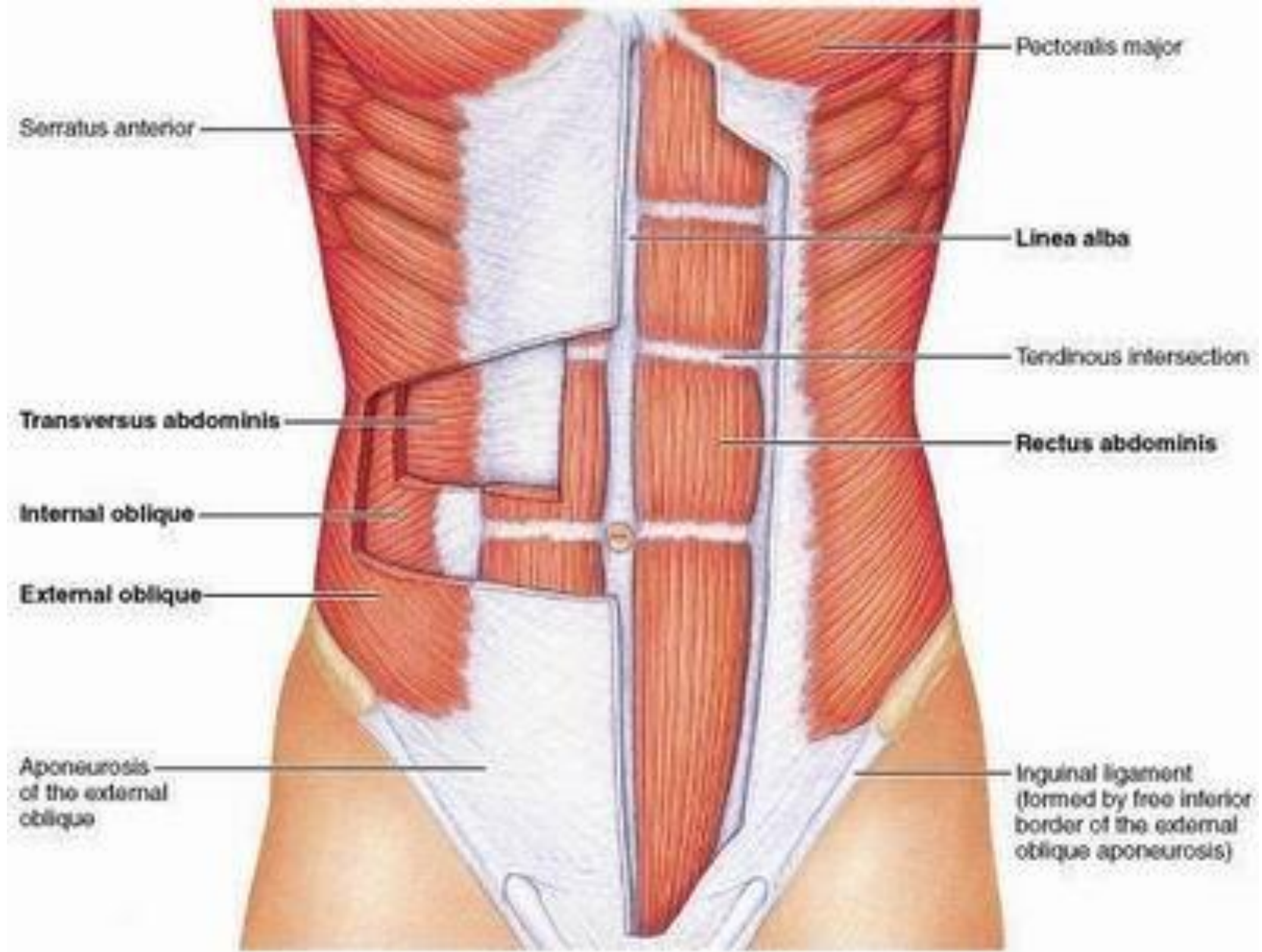
# Peritoneum (hashártya)



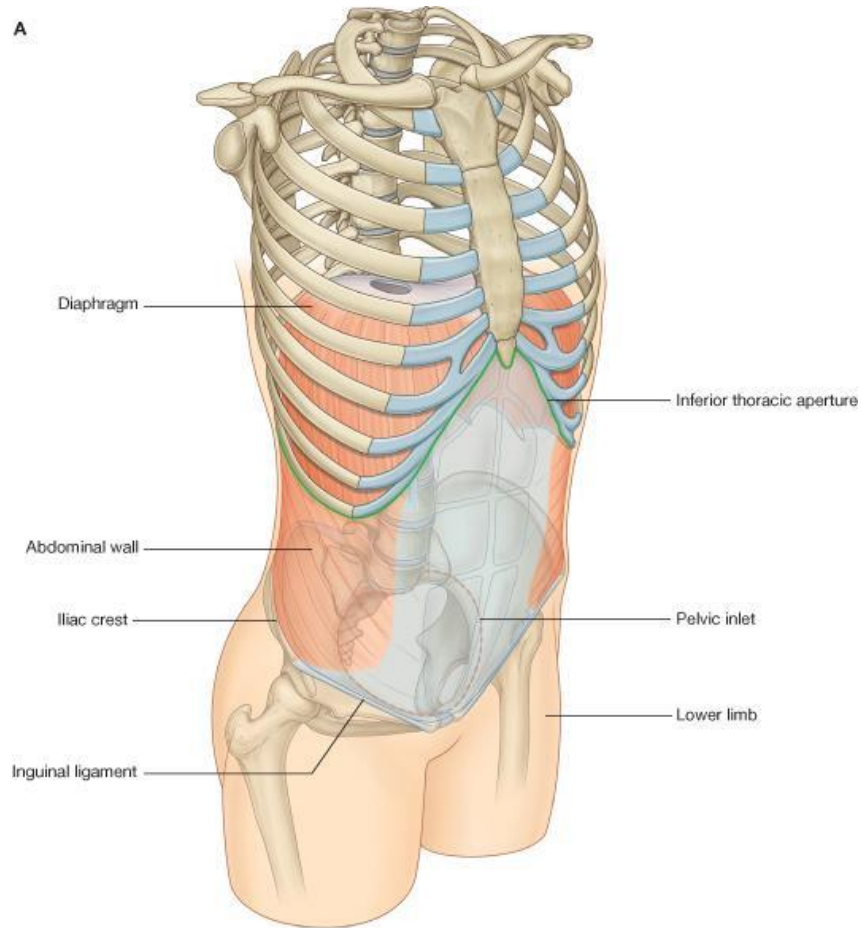
# Peritoneum (hashártya)



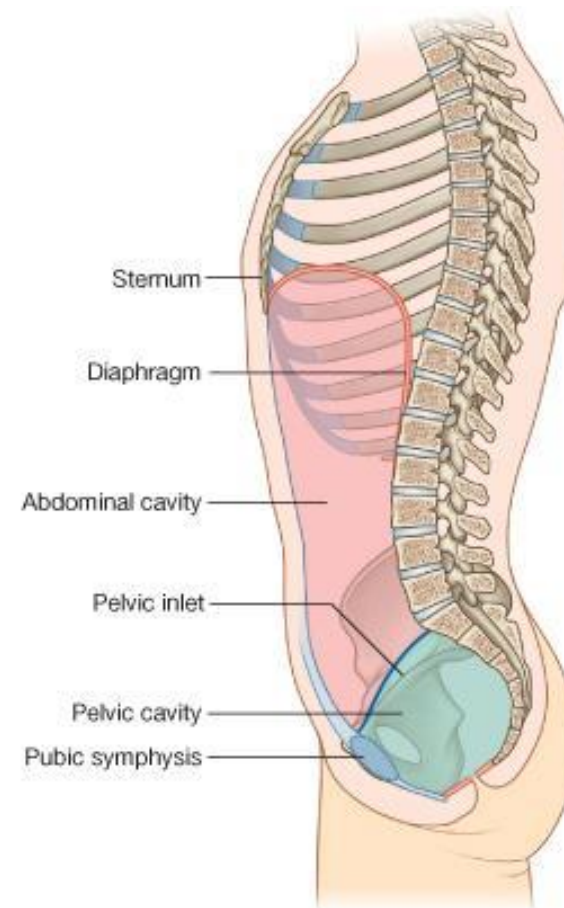
# Hasfal



# A hasüreg határai



© Elsevier. Drake et al: Gray's Anatomy for Students - www.studentconsult.com



© Elsevier. Drake et al: Gray's Anatomy for Students - www.studentconsult.com

Felül: diaphragma  
Hátul: lumbális csigolyák

Alul: mednecebemenet  
Elöl-oldalt: hasfal (hasizmok)