

A férfi nemi szervek anatómiája  
(here, mellékhere,  
prostata, ondóvezeték,  
ondózsínór és ondóhólyag). A  
hereburkok



Dr. Szuák András  
ÁOK 2019.04.09.

# arteria iliaca interna (a. hypogastrica)

## Fali ágak

- a. iliolumbalis
- a. sacralis lat.
- a. glutea sup.
- a. glutea inf.
- a. obturatoria



## Zsigeri ágak

- a. umbilicalis
  - pars patens
    - a. vesicalis sup.
    - a. ductus defferentis
  - pars occlusa
- a. rectalis media
- a. vesicalis inf.
- a. pudenda int.
- (a. uterina)

# Testis

- a. testicularis – aortából, vagy a jobb oldalt a. renalisból
- v. testicularis/plexus pampiniformis – v. cava inf.; v. renalis sin.

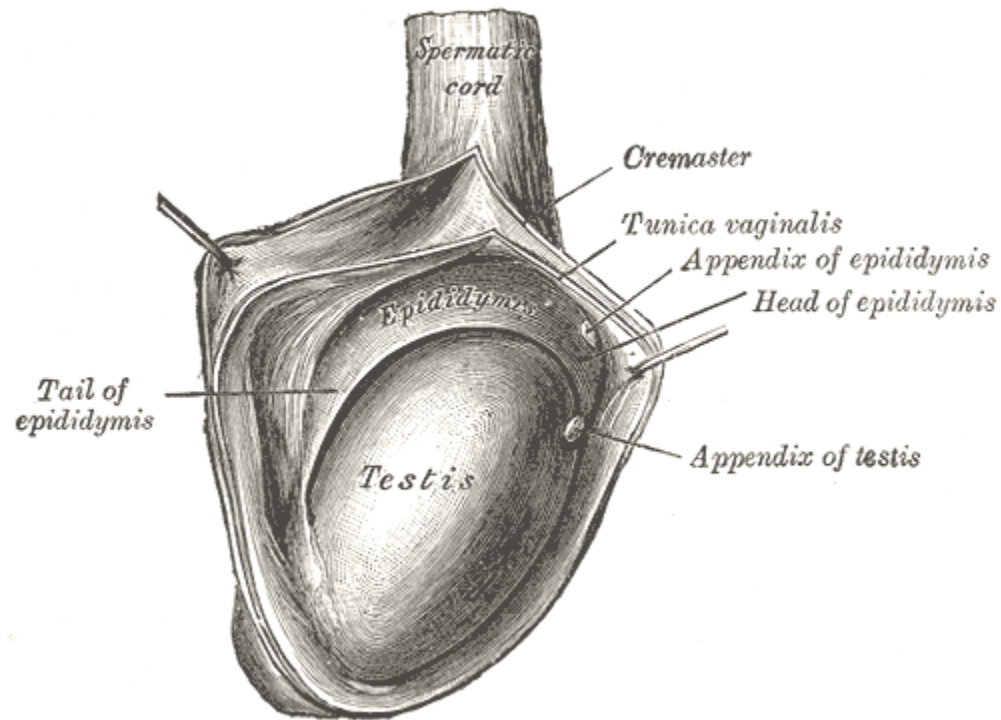


- A marihuána növeli a hererák kockázatát?



# Epididymis

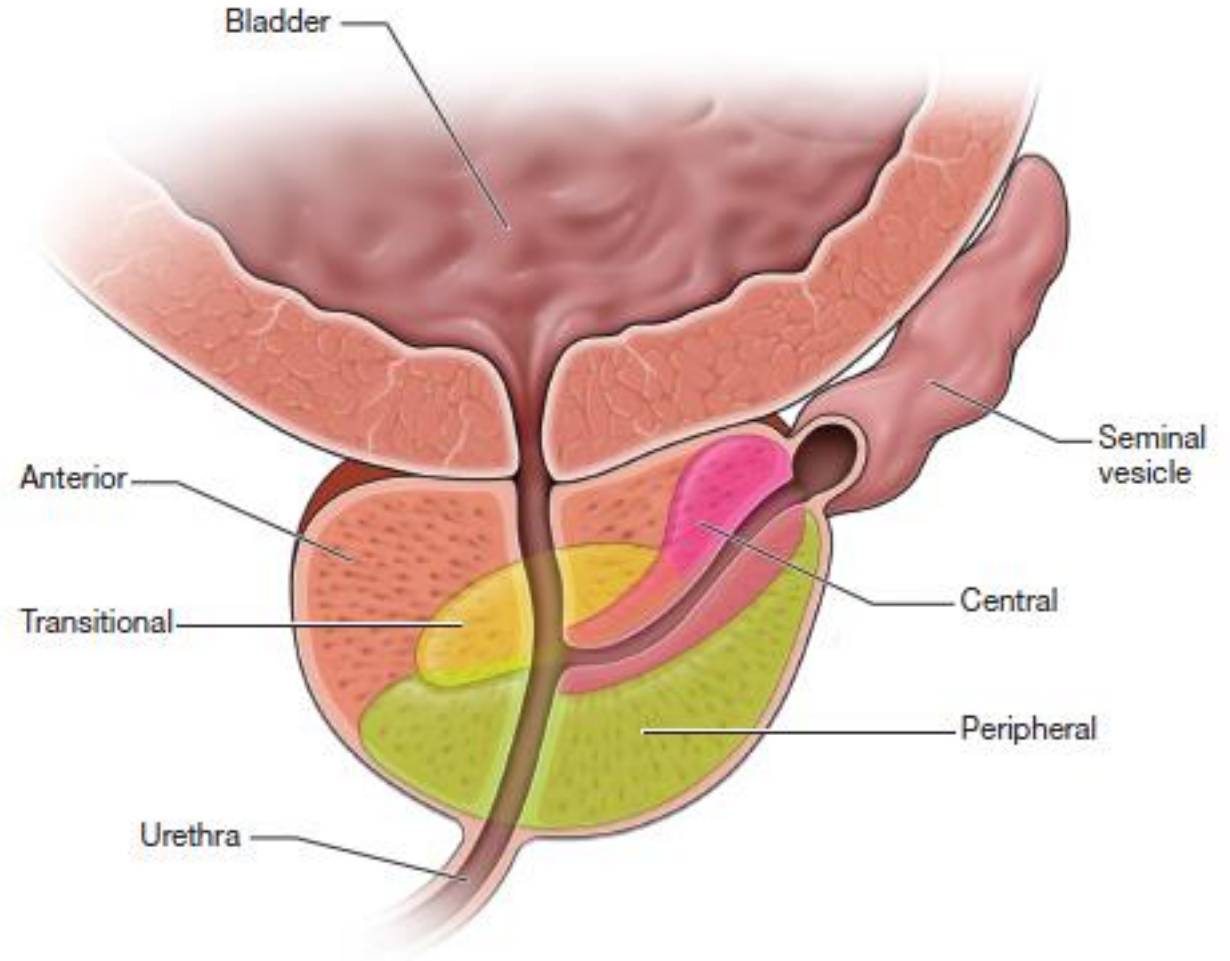
- caput-corpus-cauda
- a. testicularis és a. ductus defferentis





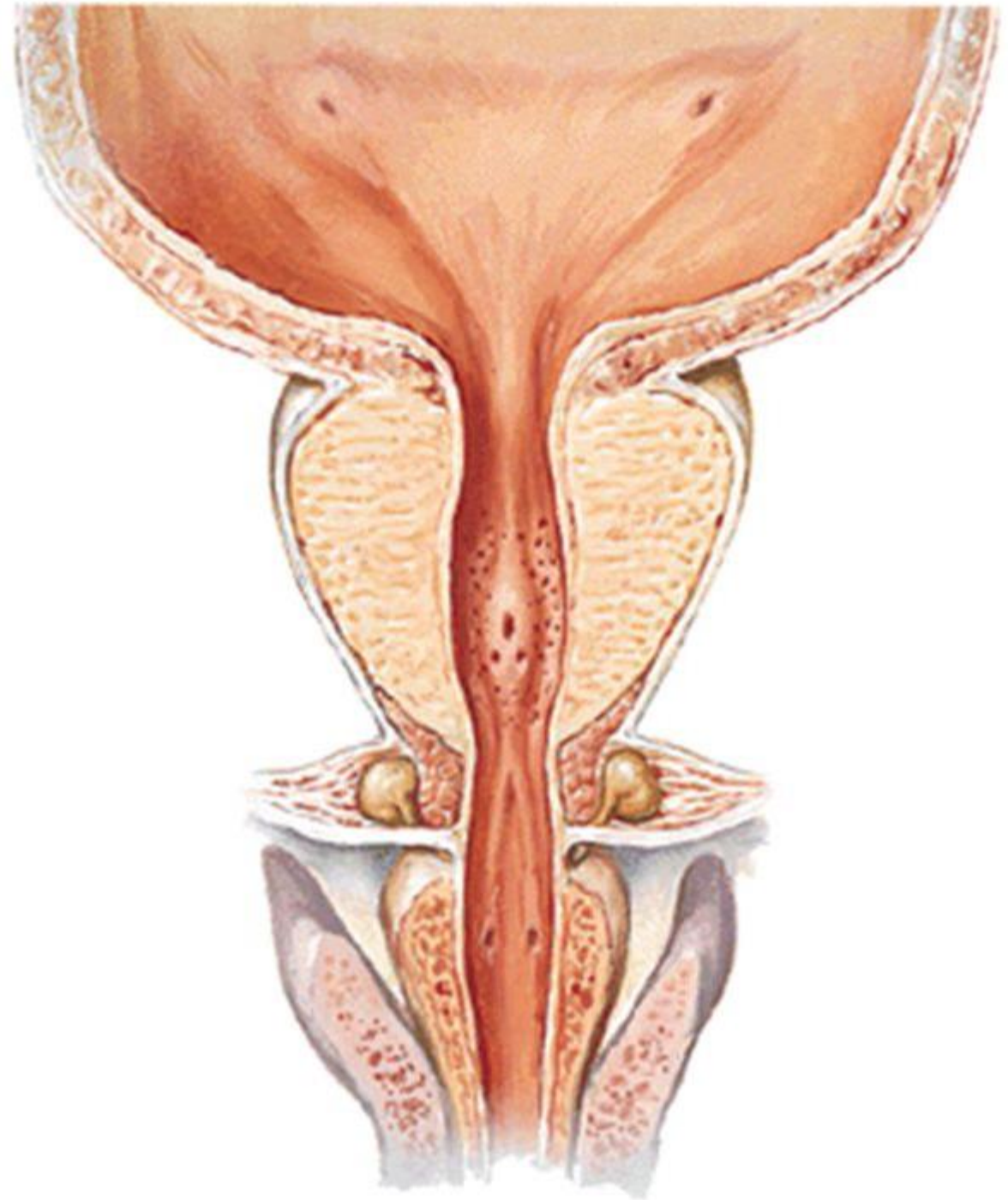
# Prostata

- perifériás zóna (rák)
- centrális zóna
- átmeneti zóna (BPH)
- elülső fibromuscularis stroma
- a. vesicalis inf.; (a. rectalis med.)



# Prostata

- crista urethralis
- colliculus seminalis (verumontanum)
  - utriculus prostaticus
  - ductus ejaculatorius



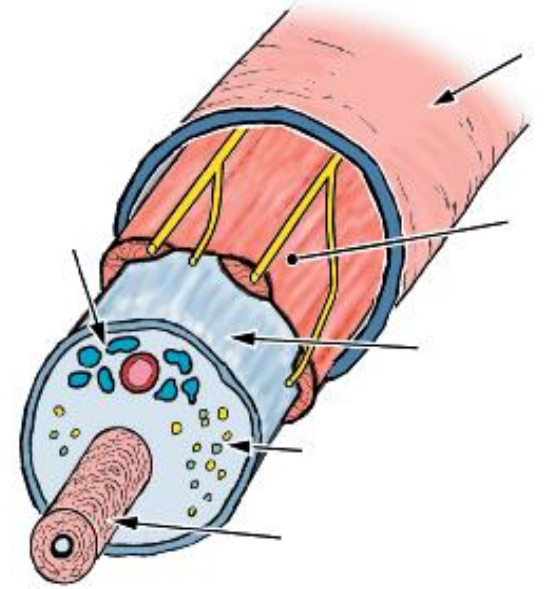
# Ductus defferens

- a. ductus defferentis
- pars scrotalis
- pars funicularis
- pars inguinalis
- pars pelivica



# Funiculus spermaticus

- ductus deferens és a. ductus deferentis
- a. testicularis
- plexus pampiniformis
- m. cremaster és fascia cremasterica
  - a. cremasterica (a. epigastrica inf. ága, tehát a. iliaca ext. ágrendszer)
- vestigium proc. vaginalis
- fascia spermatica int/ext.
- n. genitofemoralis ramus genitalis
- n. ilioinguinalis



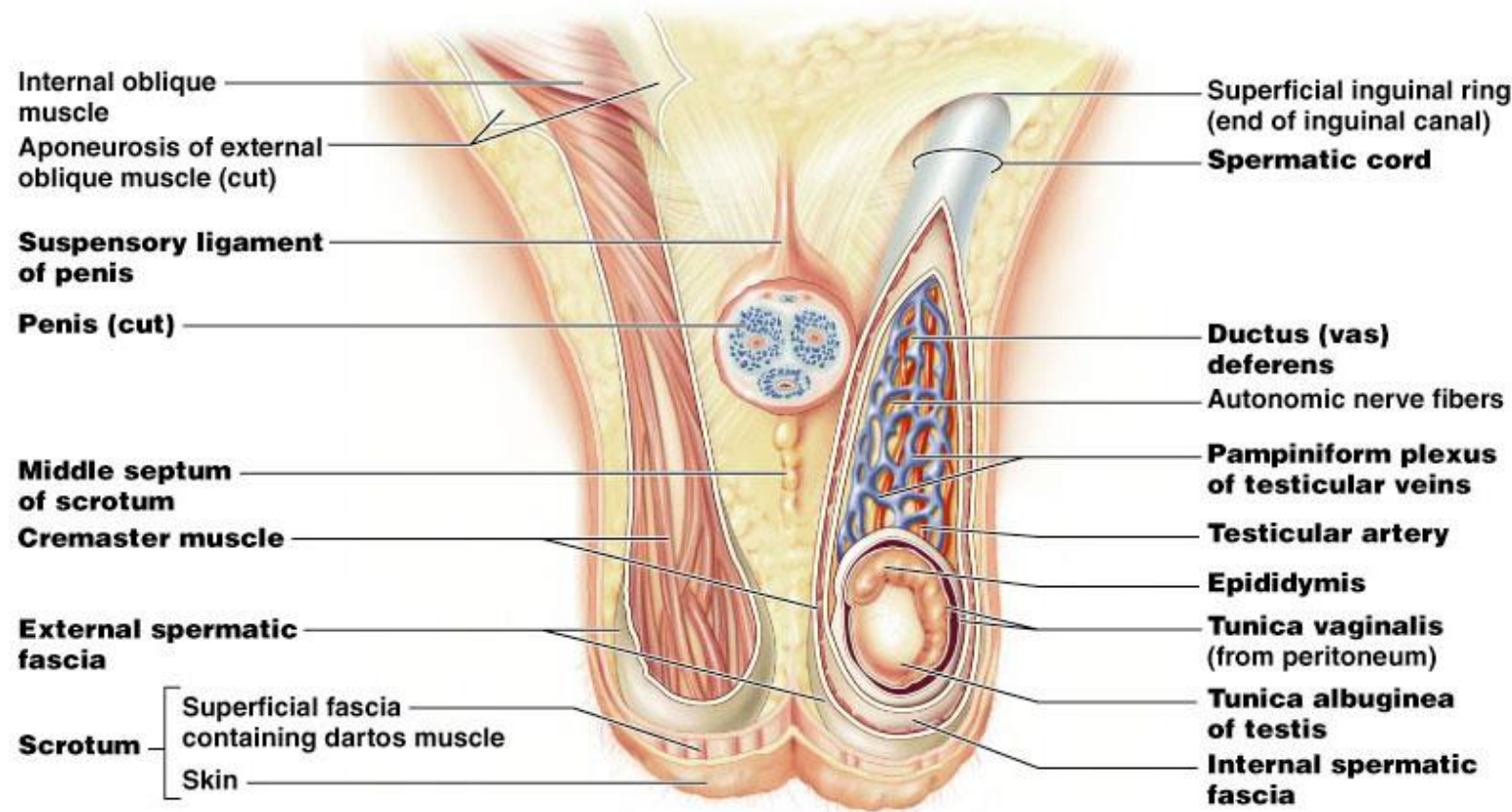


# Vesicula seminalis

- a. ductus defferentis
- a. vesicalis sup/inf.



# Hereburkok



- Scrotum bőre
- Tunica dartos
- Fascia spermatica externa – m. obliquus abd. ext.
- Musculus cremaster – m. obliquus abd. int.
- Fascia spermatica interna – fascia transversalis
- Tunica vaginalis – peritoneum
- (tunica albuginea)













Köszönöm a figyelmet!