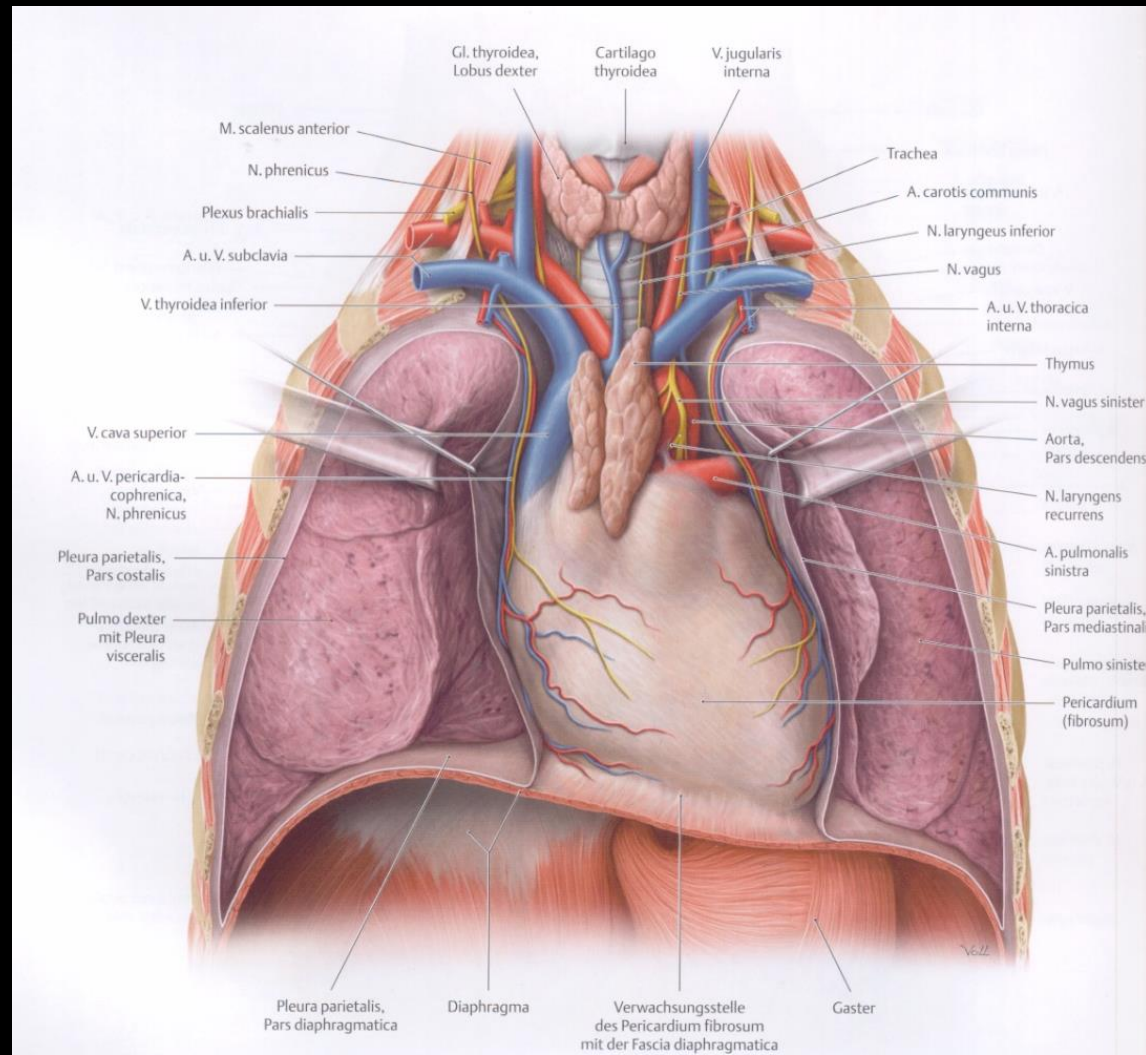
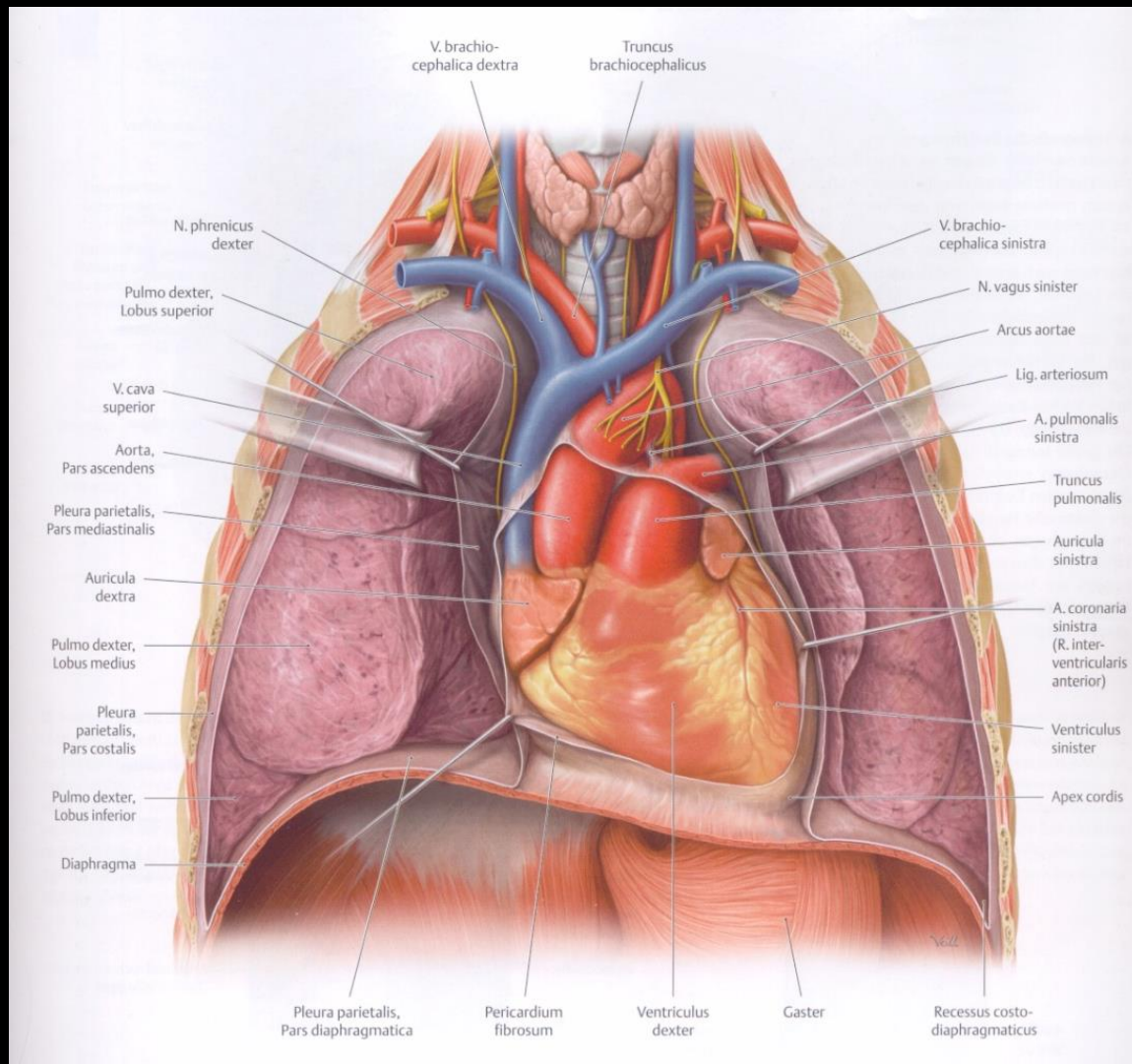


A mediastinum felosztása, pericardium, situs cordis, auscultatio, percussio, a szív erei és ingerületvezető rendszere

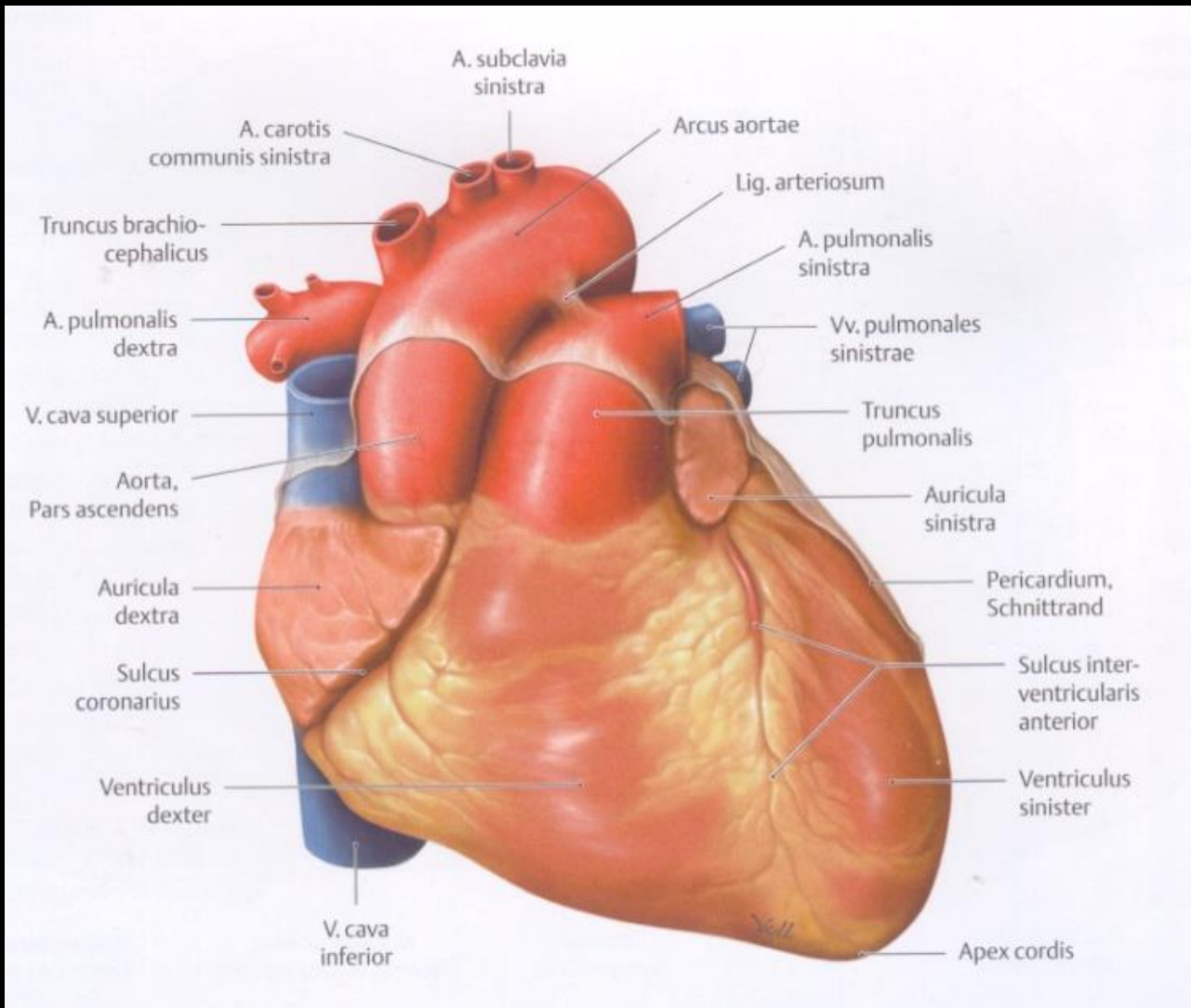
Barna János

Pericardium

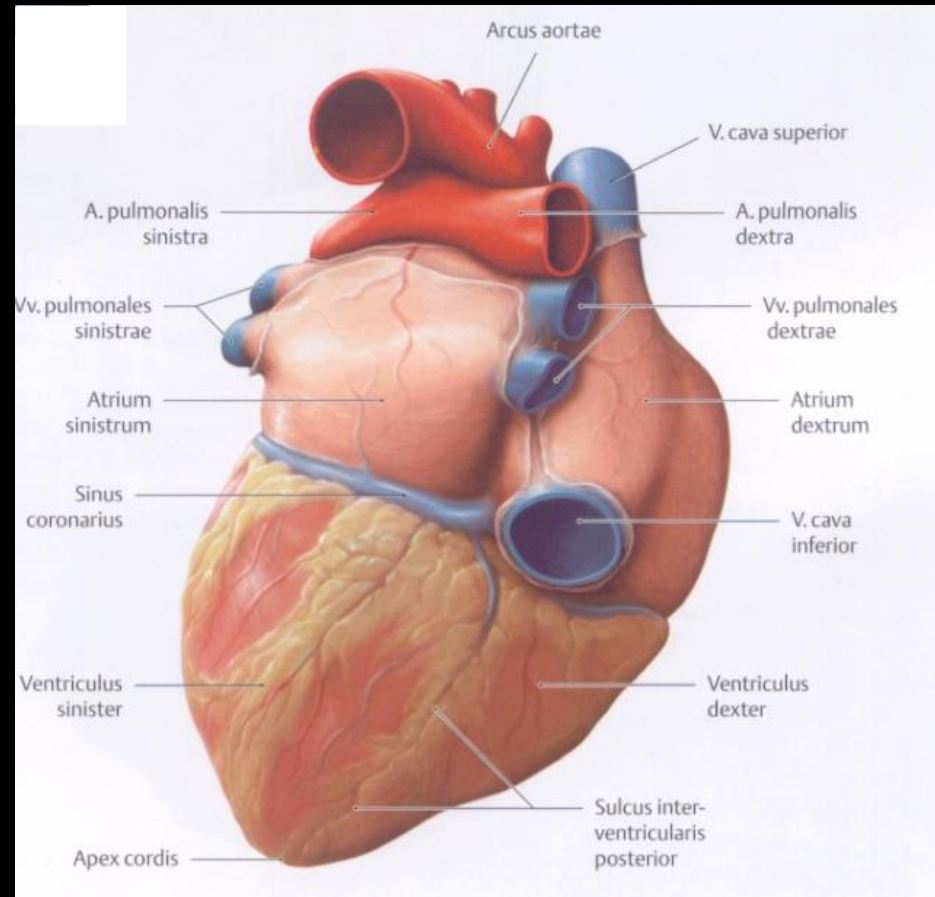
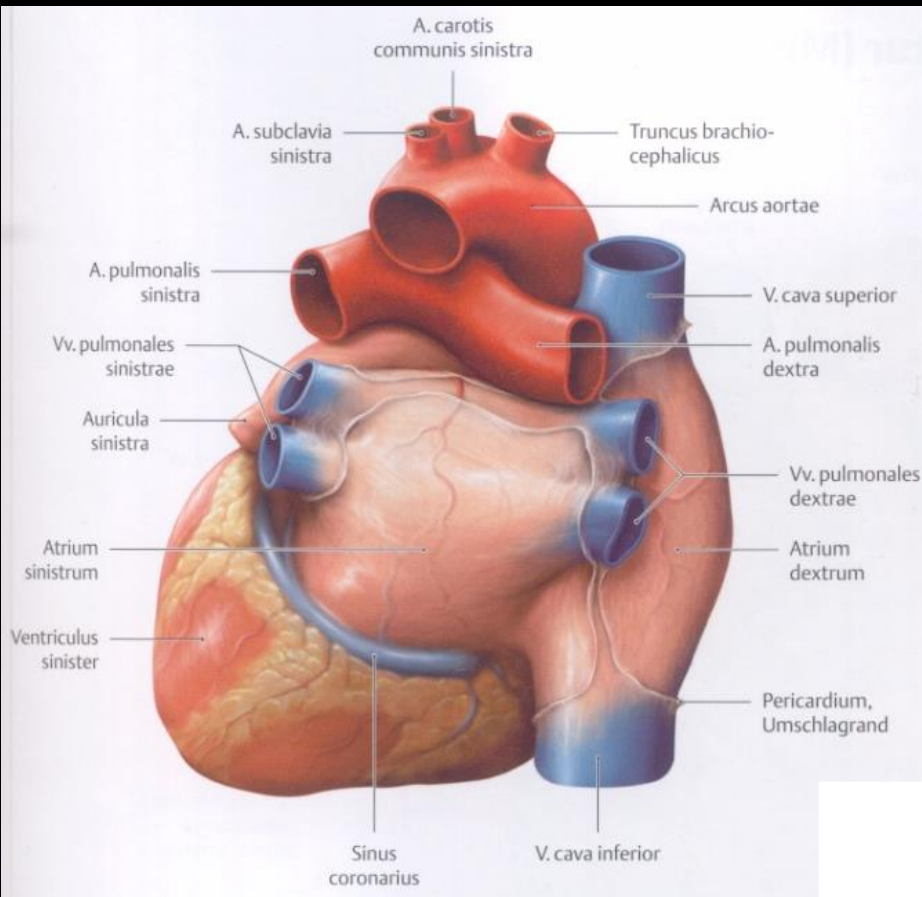




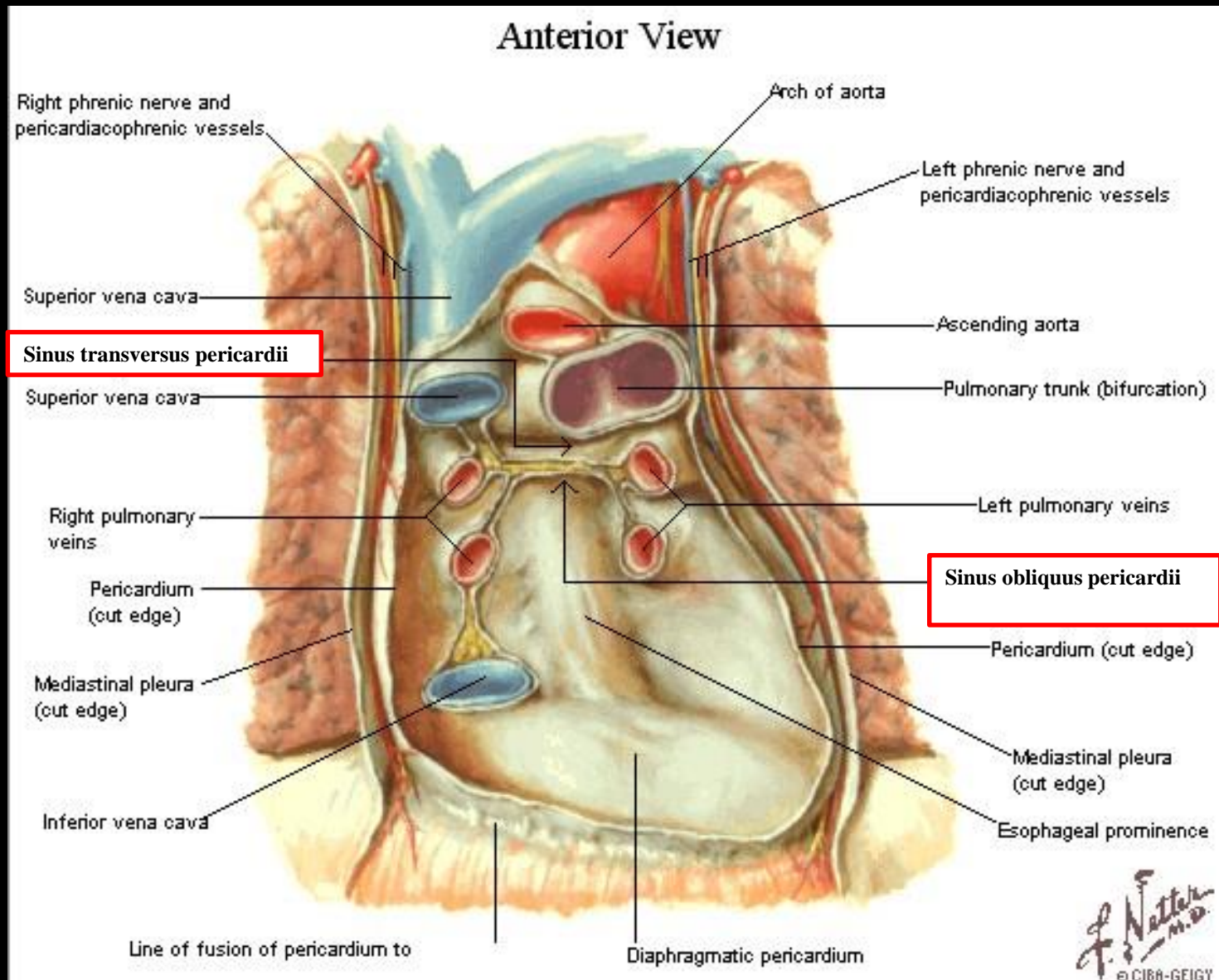
Pericardiális áthajlás



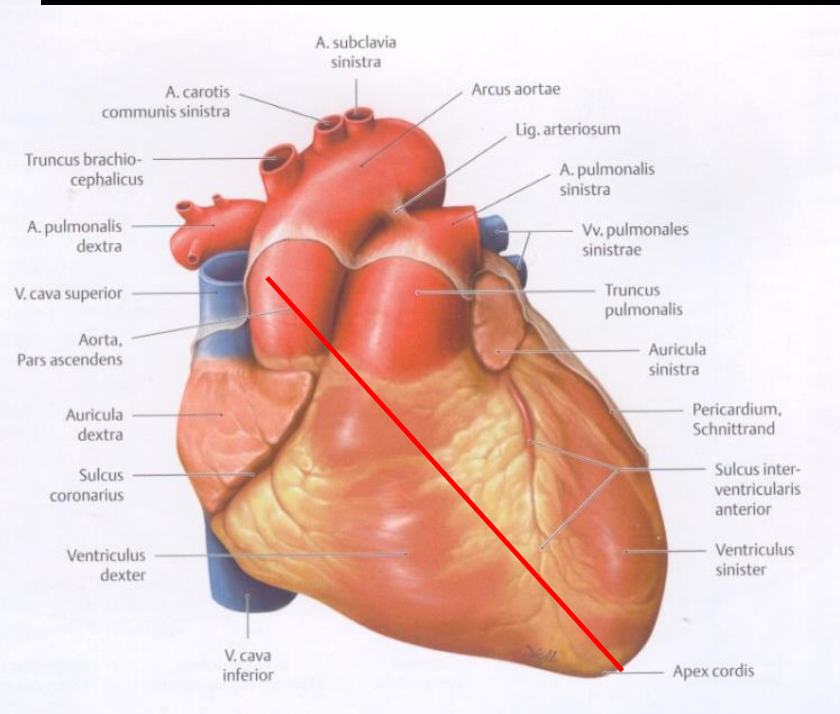
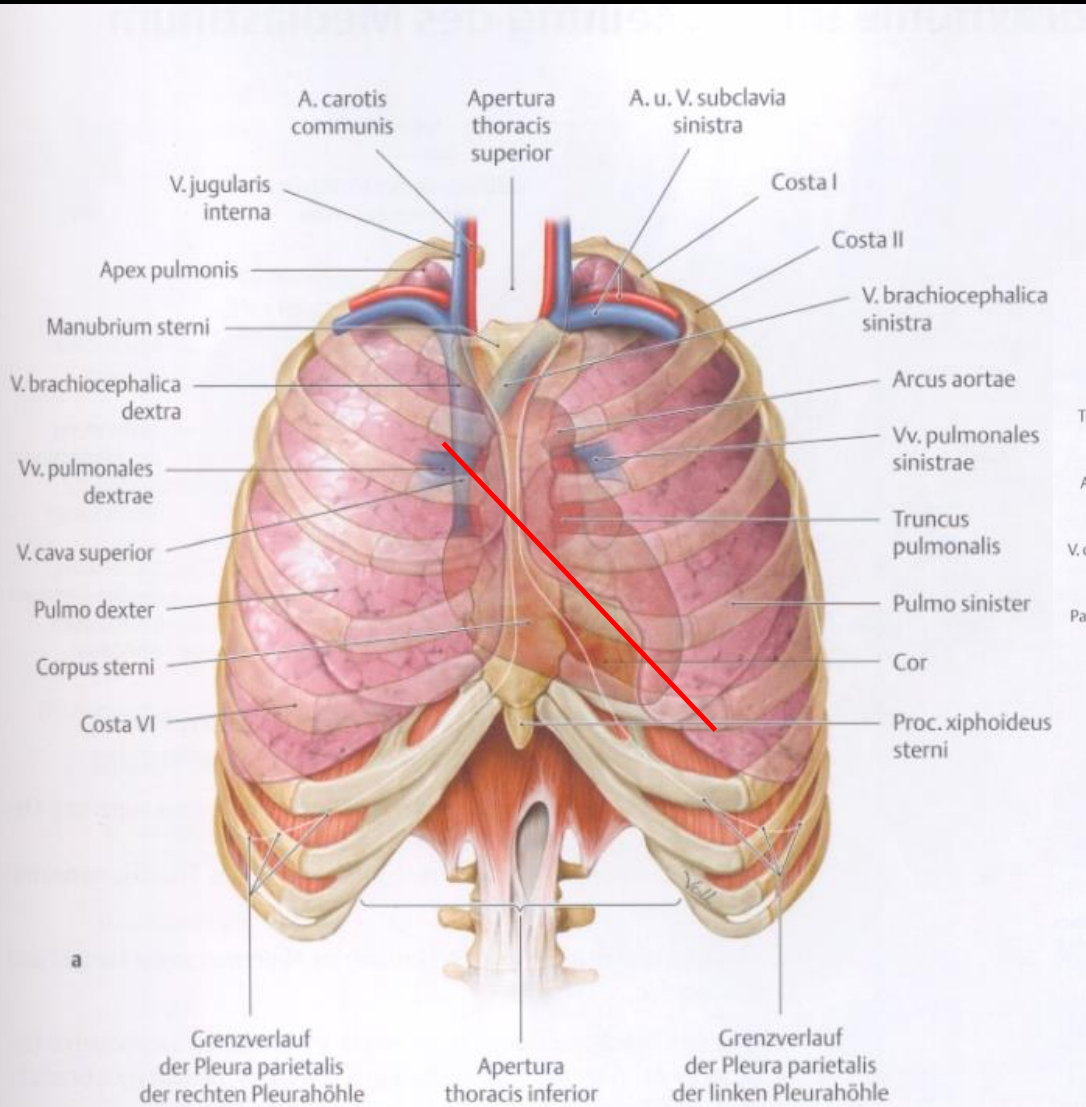
Pericardiális áthajlás



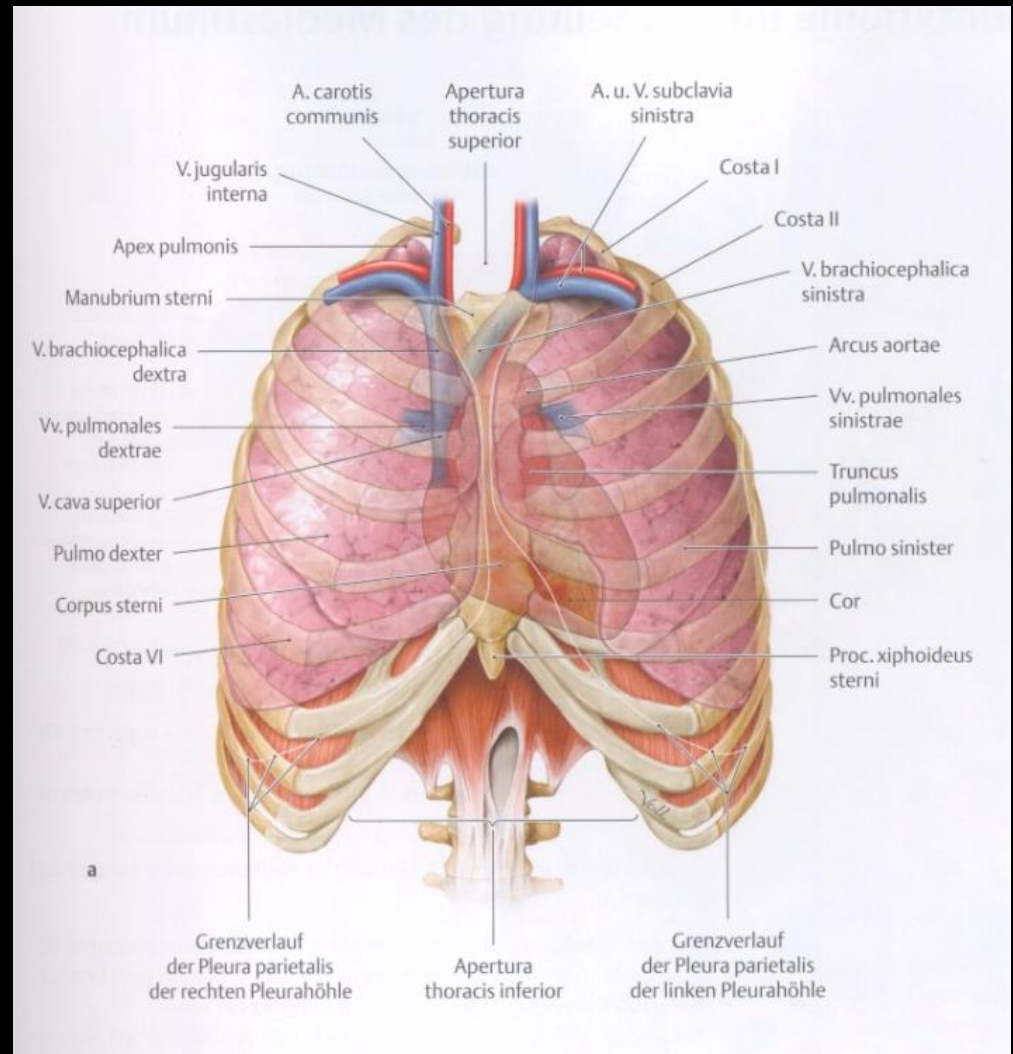
Pericardiális áthajlás



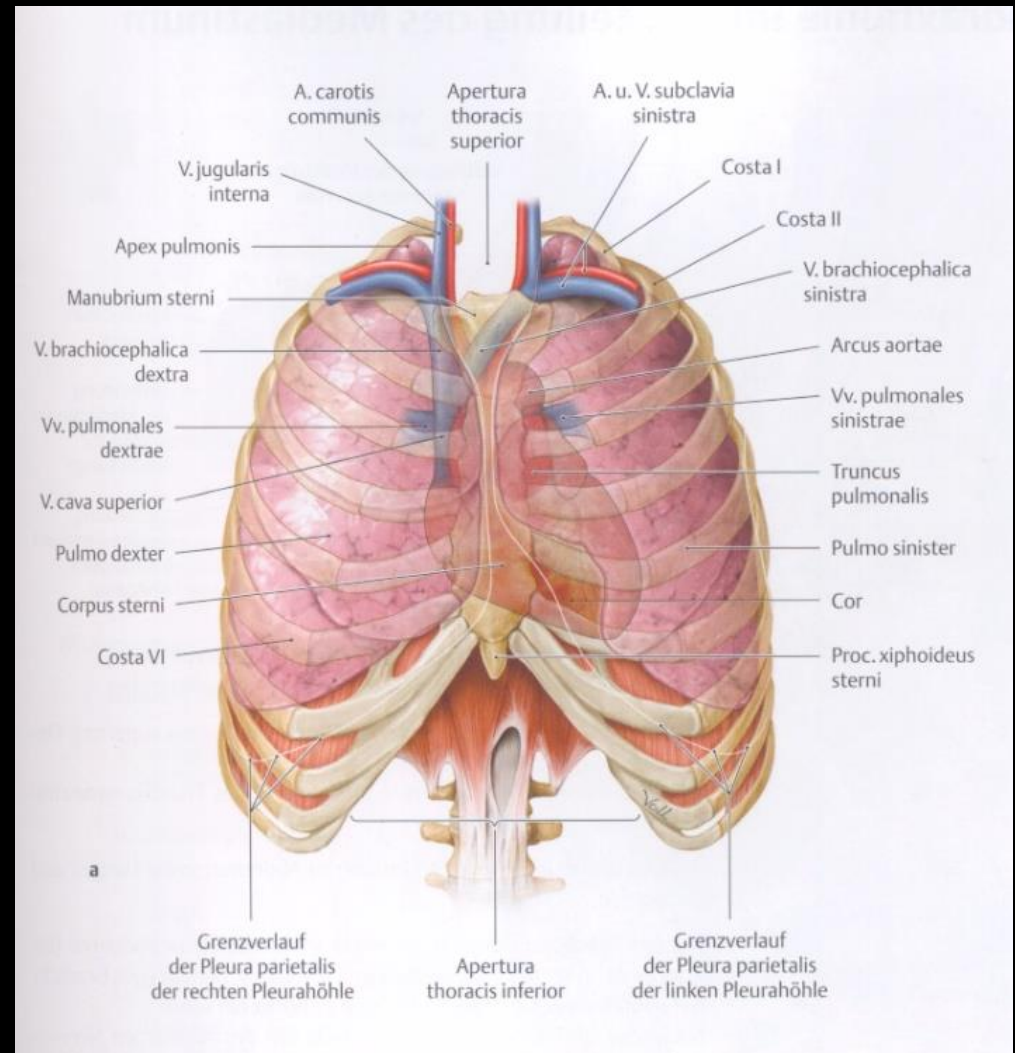
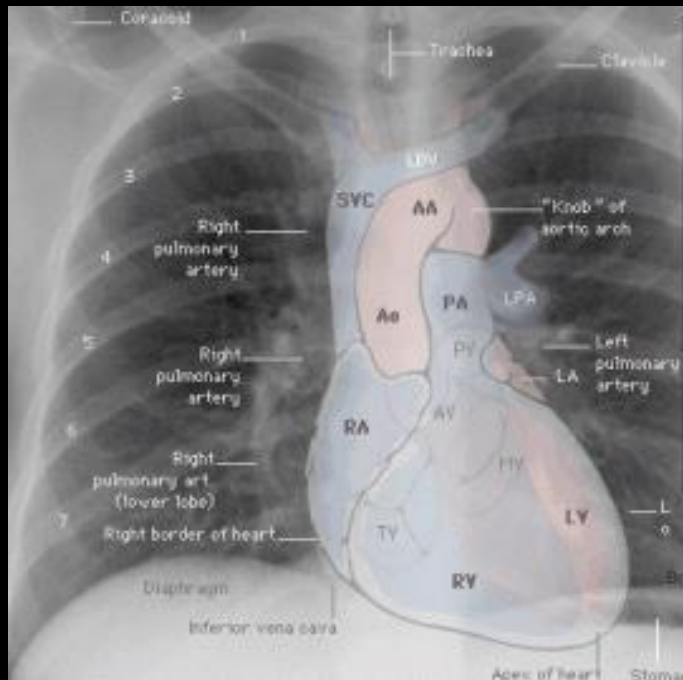
Situs cordis



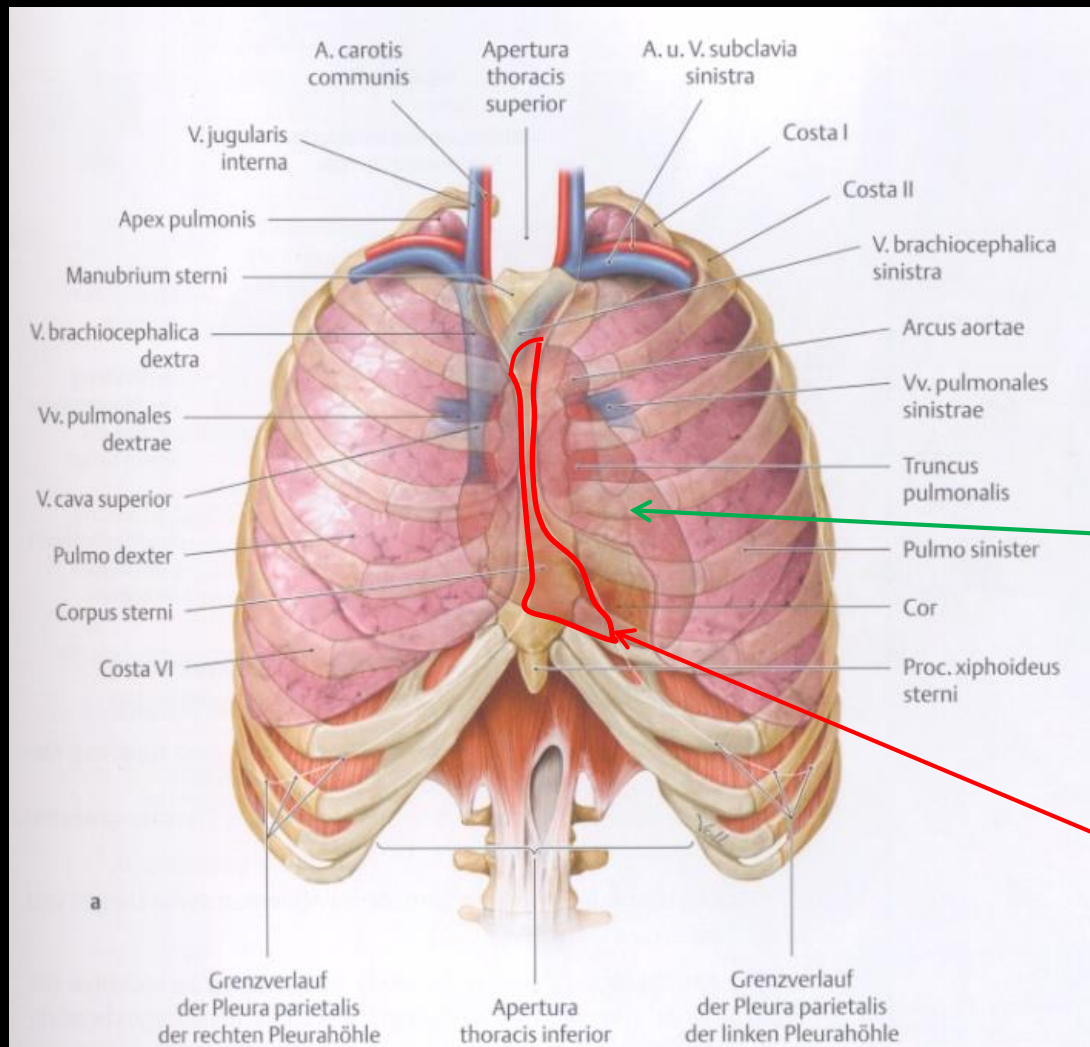
A szív PA rtg. árnyéka, a szív tetülete az elülső mellkasfalra



A szív PA rtg. árnyéka, a szív tetülete az elülső mellkasfalra



Percussio – kopogtatás (relatív és abszolút szívtoppulat vizsgálata)



relatív szívtoppulat

abszolút szívtoppulat

Auscultatio – hallgatóság (szívhangok)



Auscultation position
for aortic valve



Auscultation position
for pulmonary valve



Auscultation position
for tricuspid valve



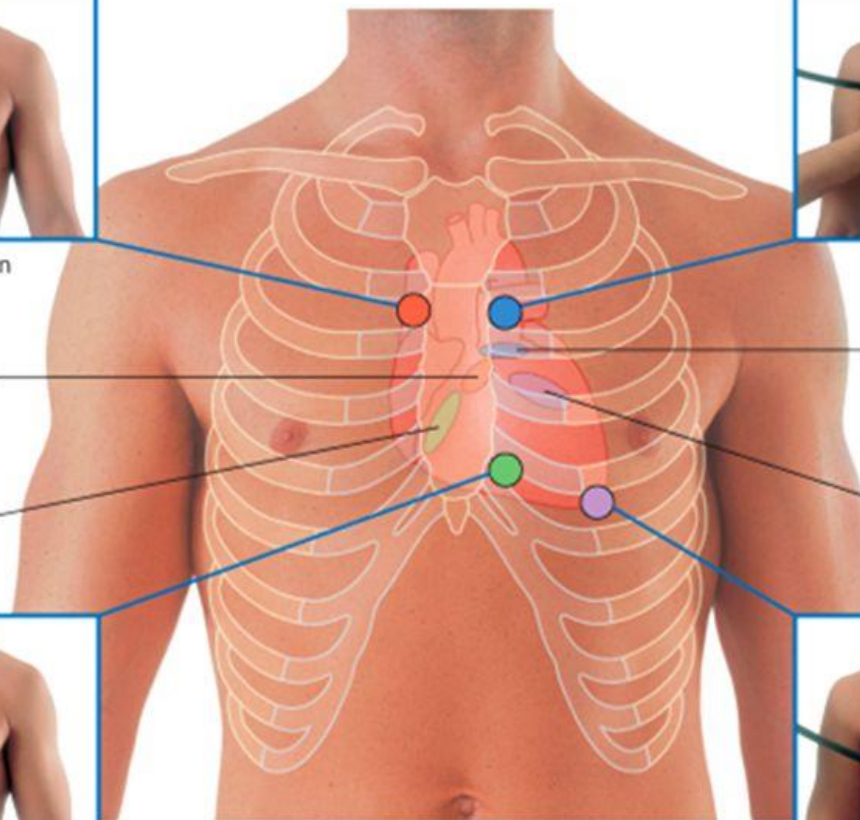
Auscultation position
for mitral valve

Aortic valve

Tricuspid valve

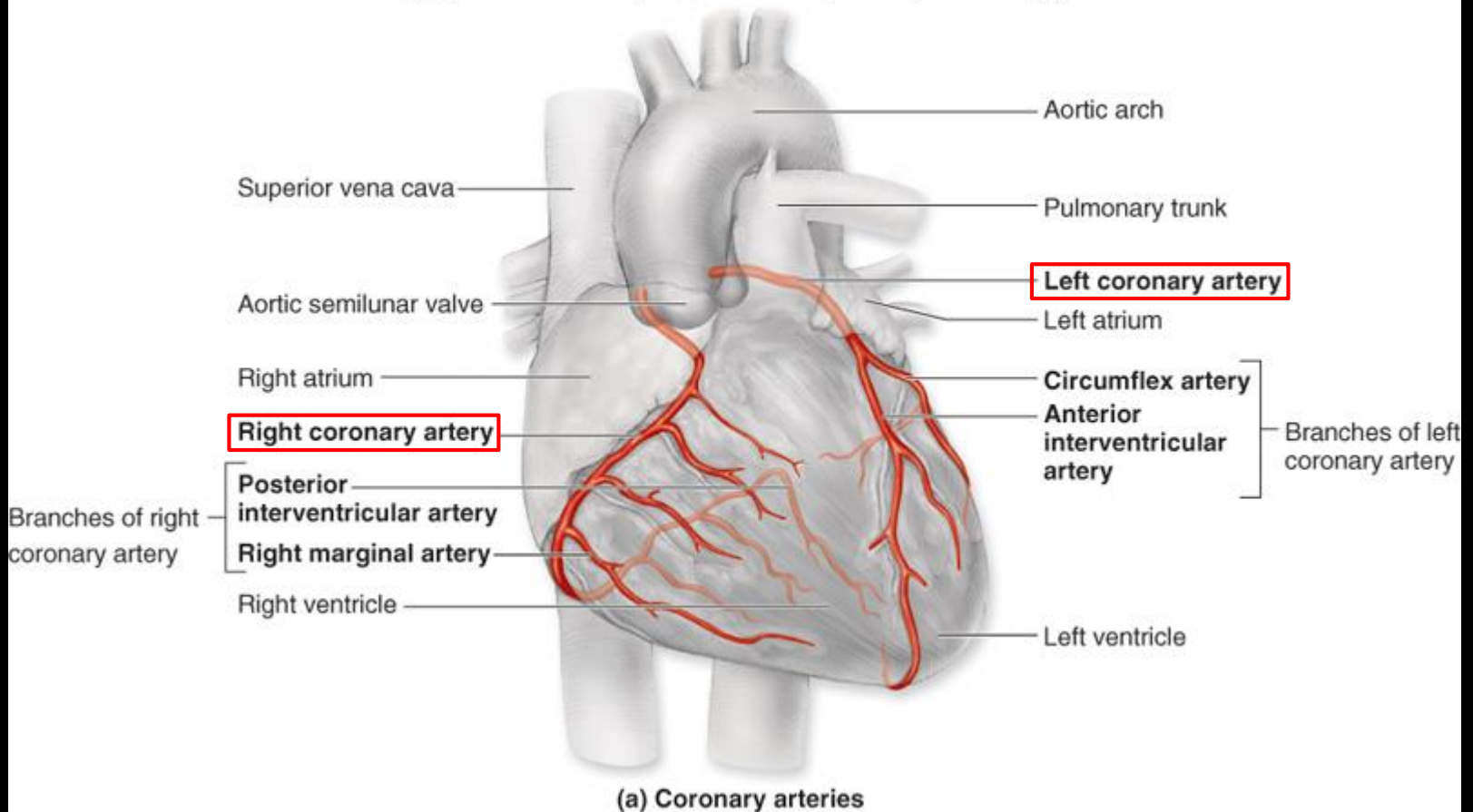
Pulmonary valve

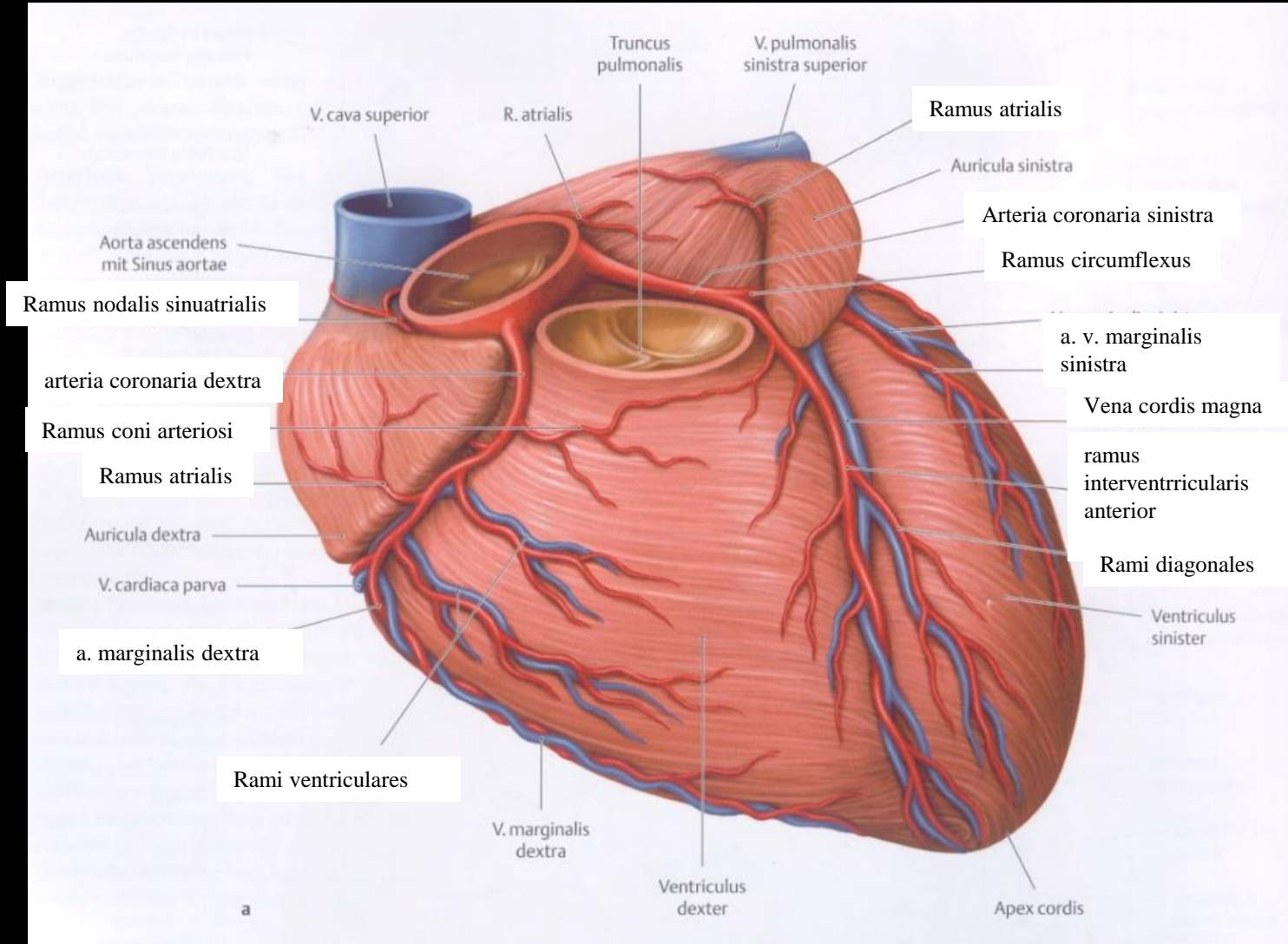
Mitral valve

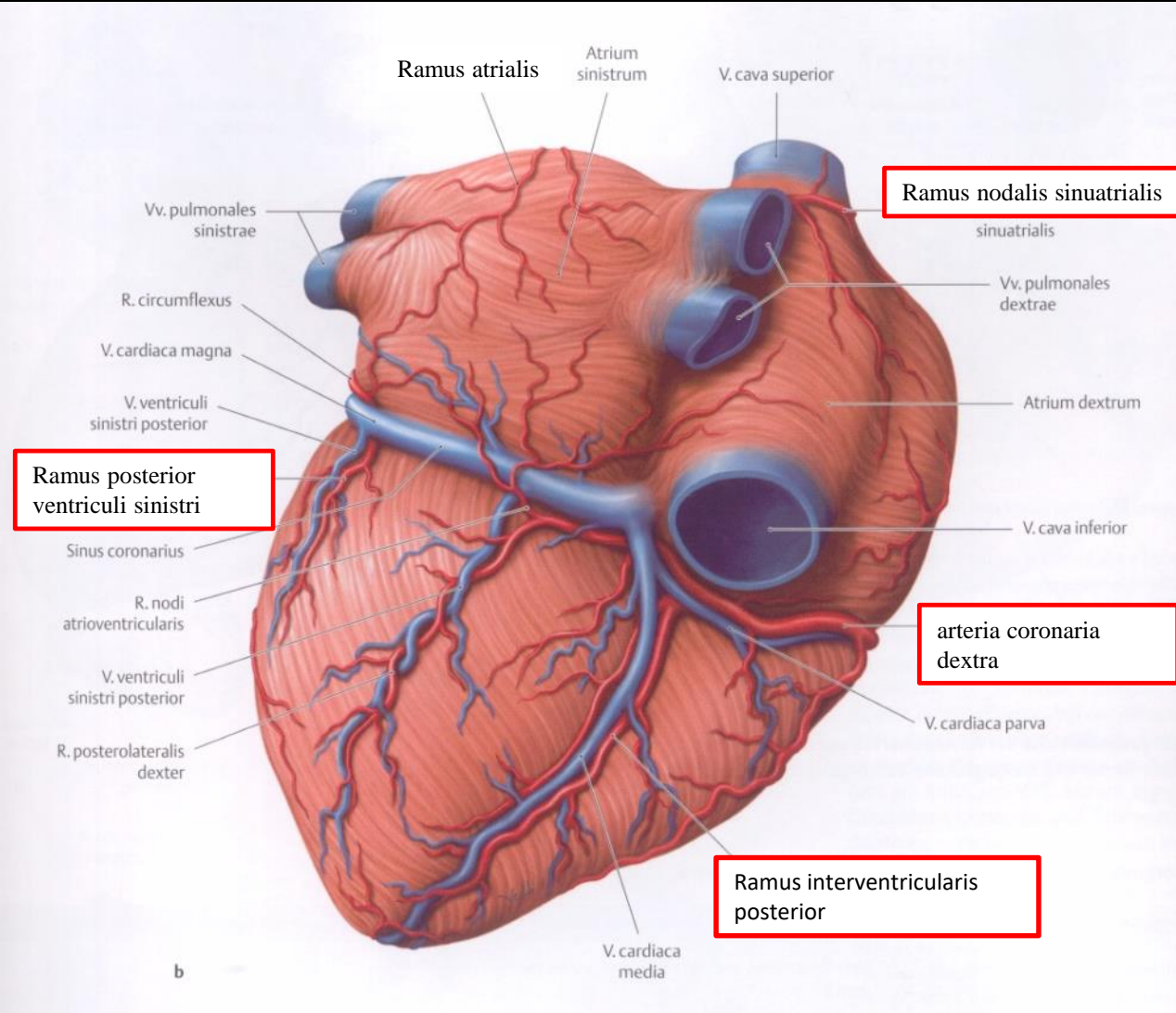


A szív artériái

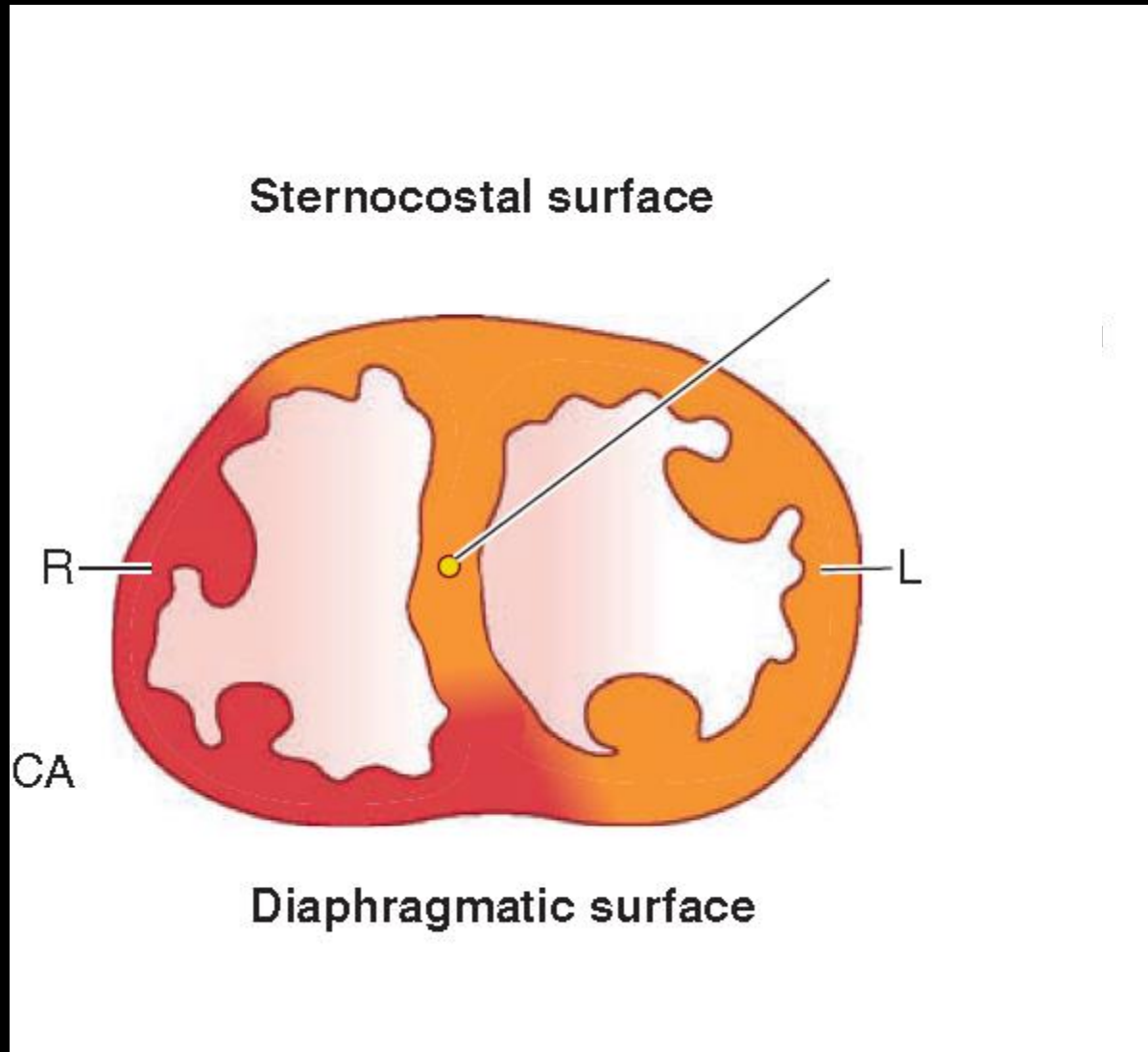
Copyright © The McGraw-Hill Companies, Inc. Permission required for reproduction or display.

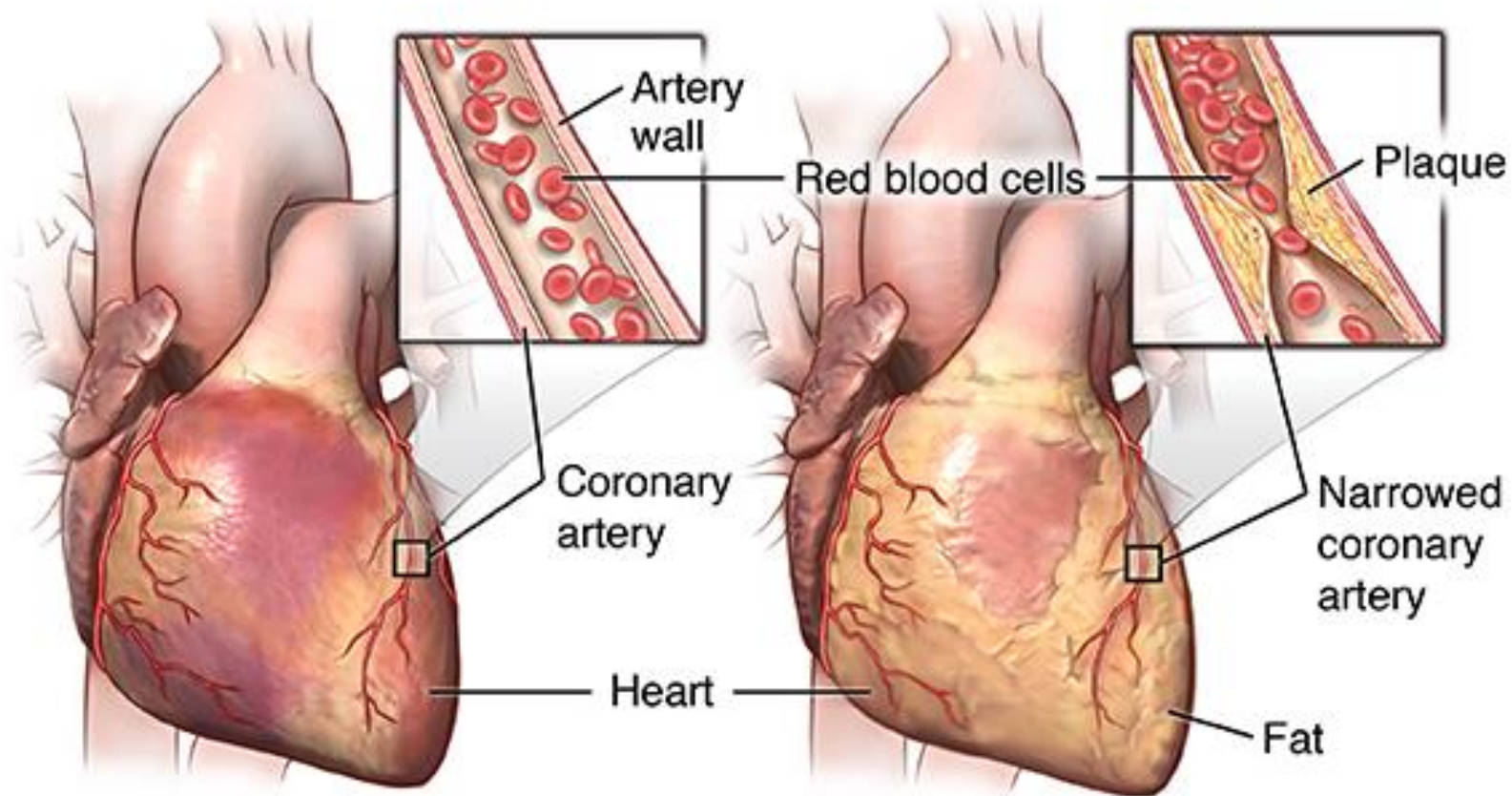






Az *a. coronaria dextra* és *a. coronaria sinistra* ellátási területei

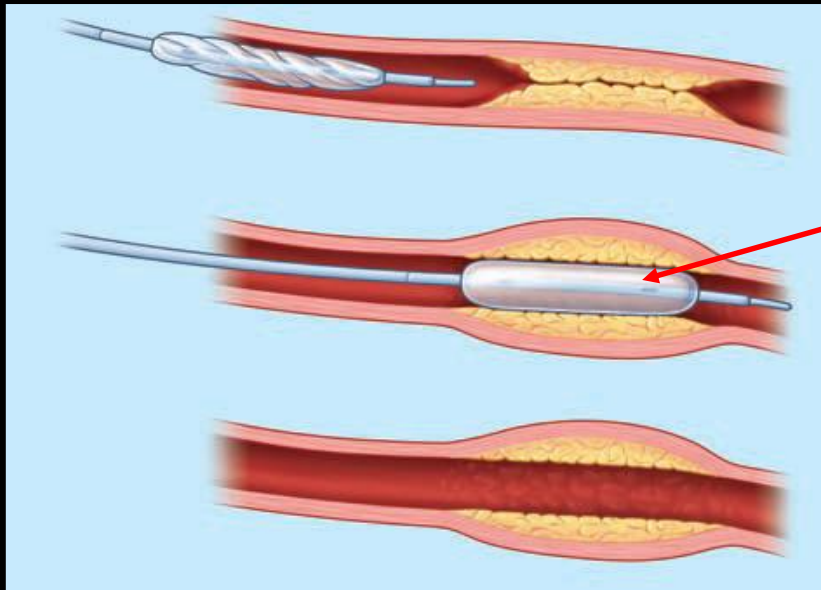




Normal heart and artery

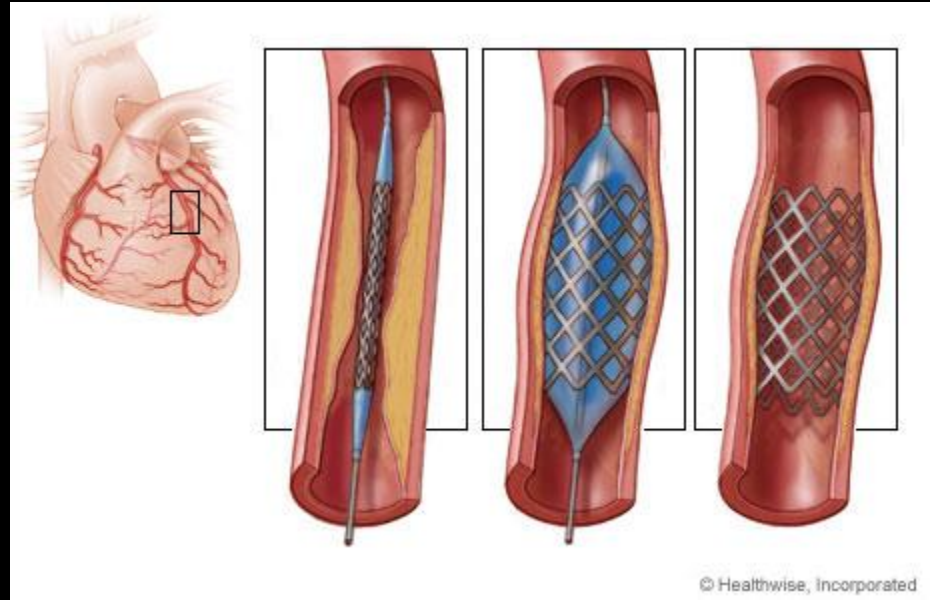
Atheroscleroticus plakk az artériában

Coronaria angioplastica

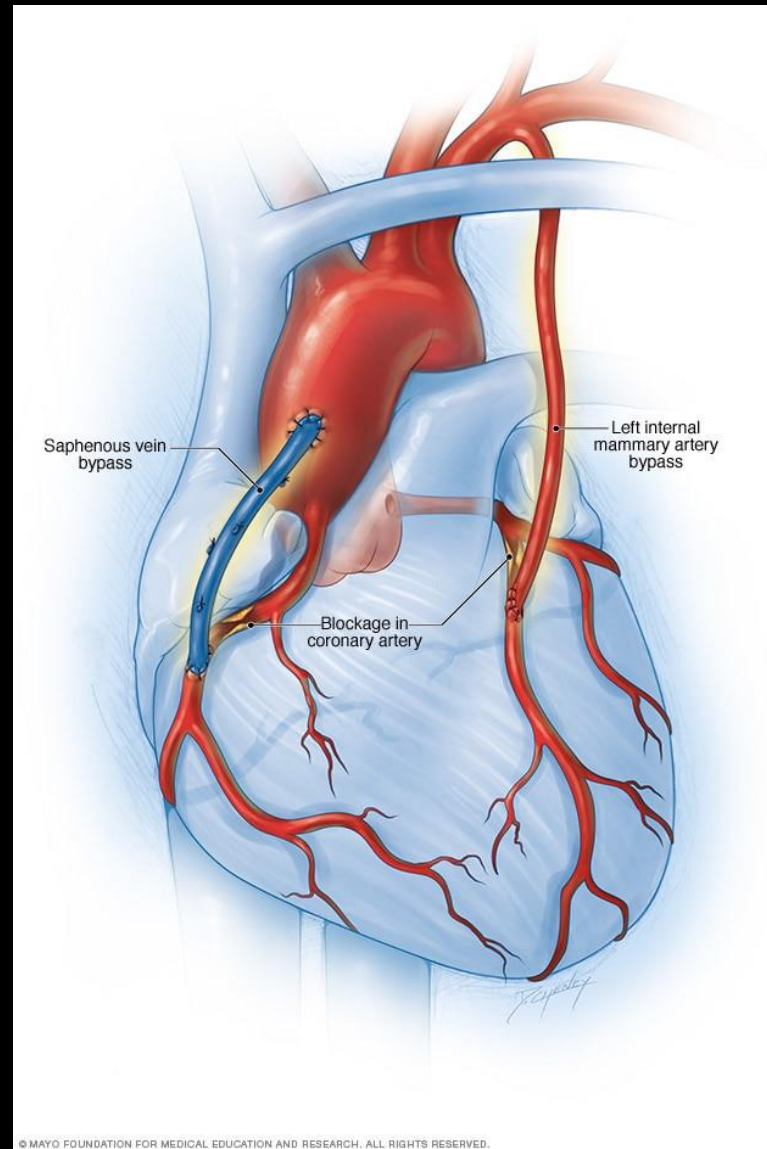


Ballon katéter

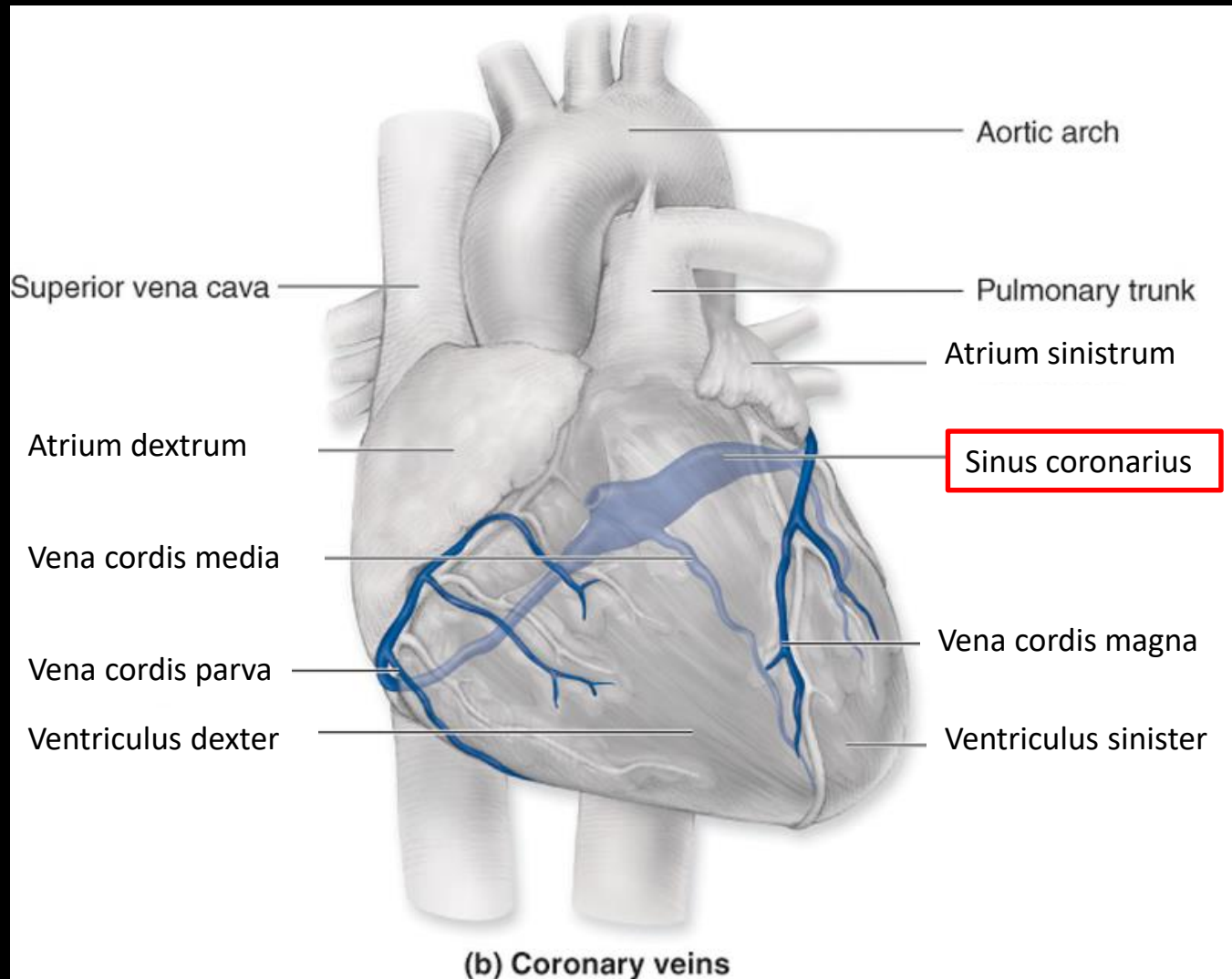
Stent implantáció

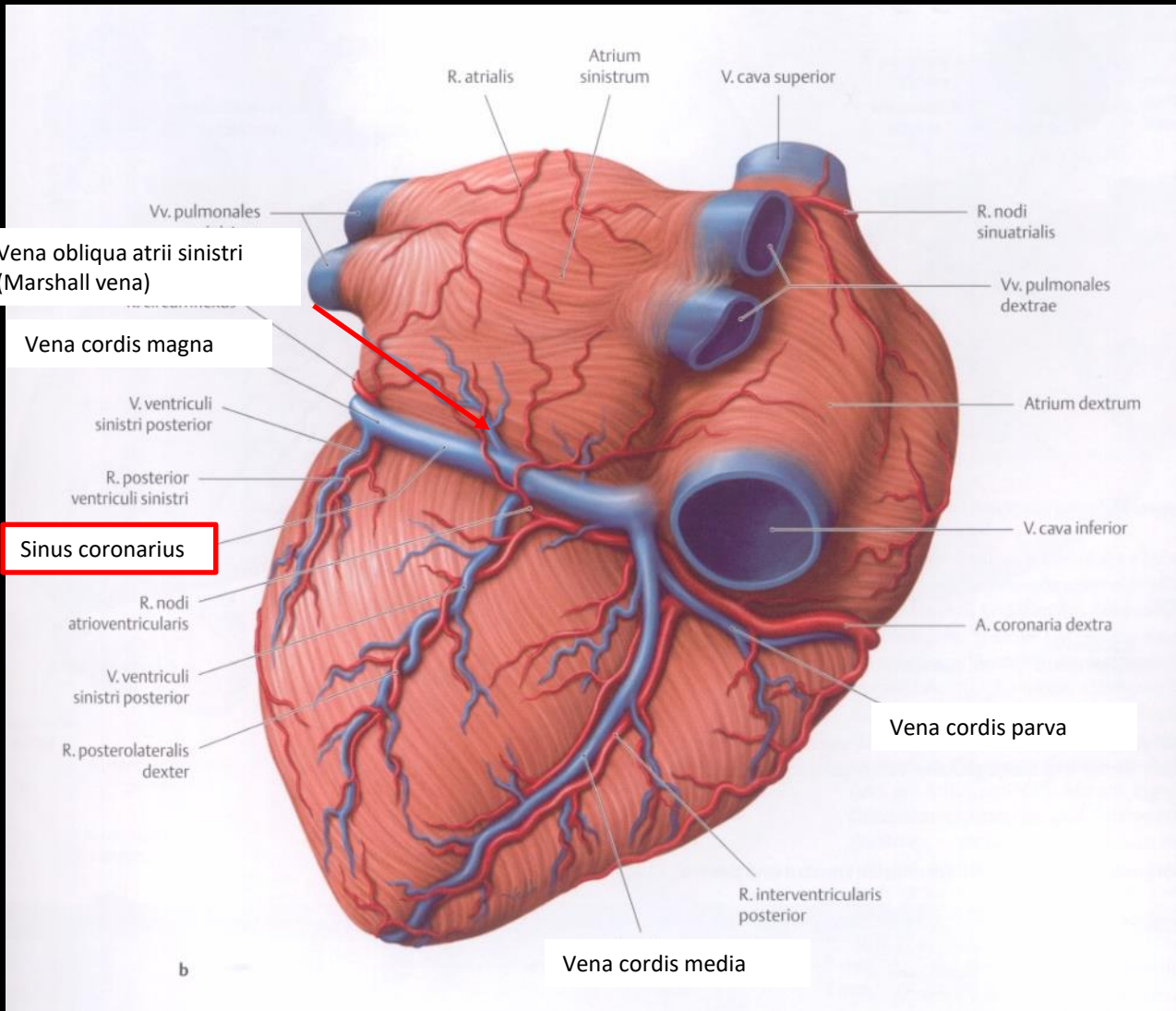


Coronaria bypass műtét

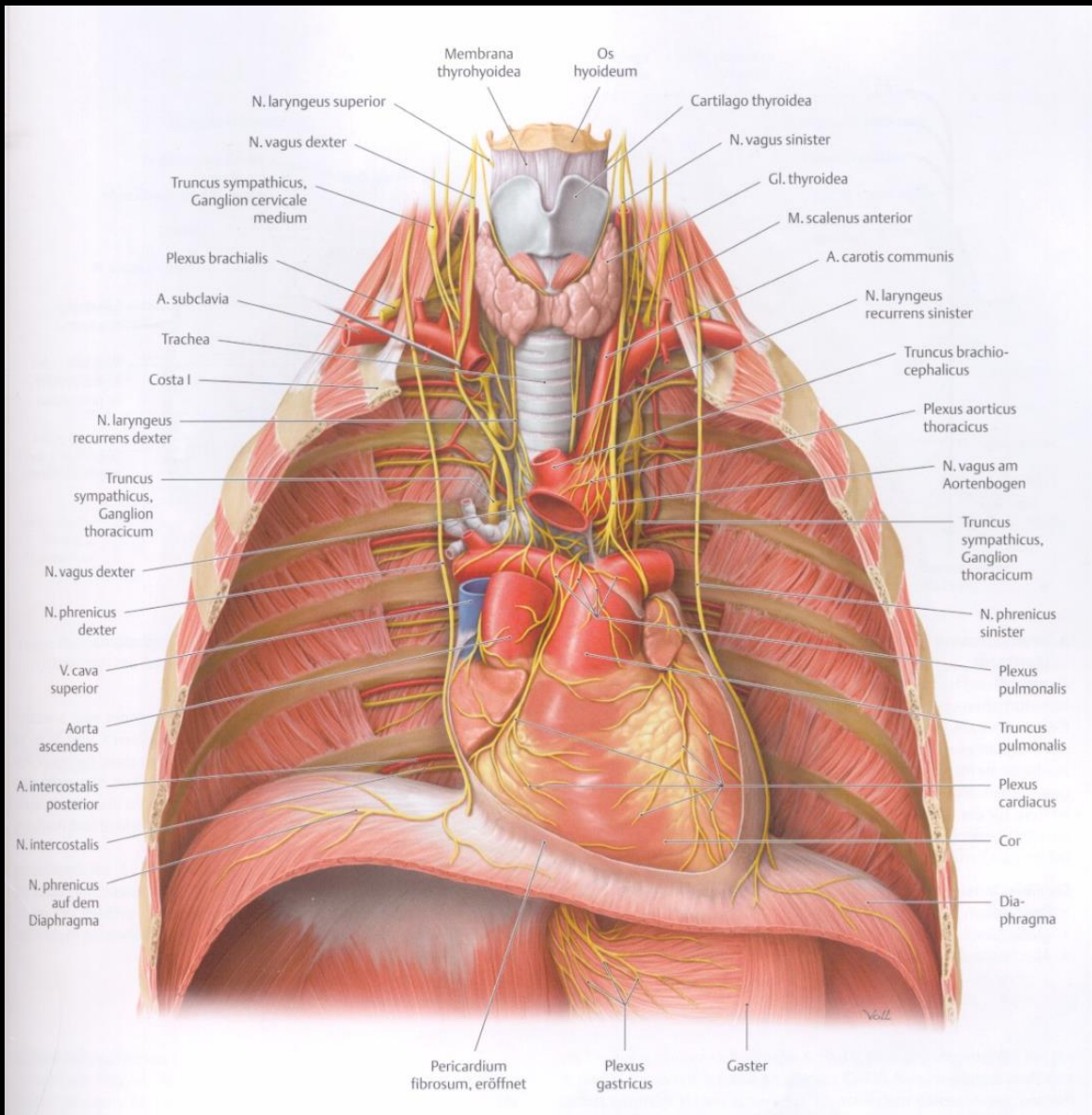


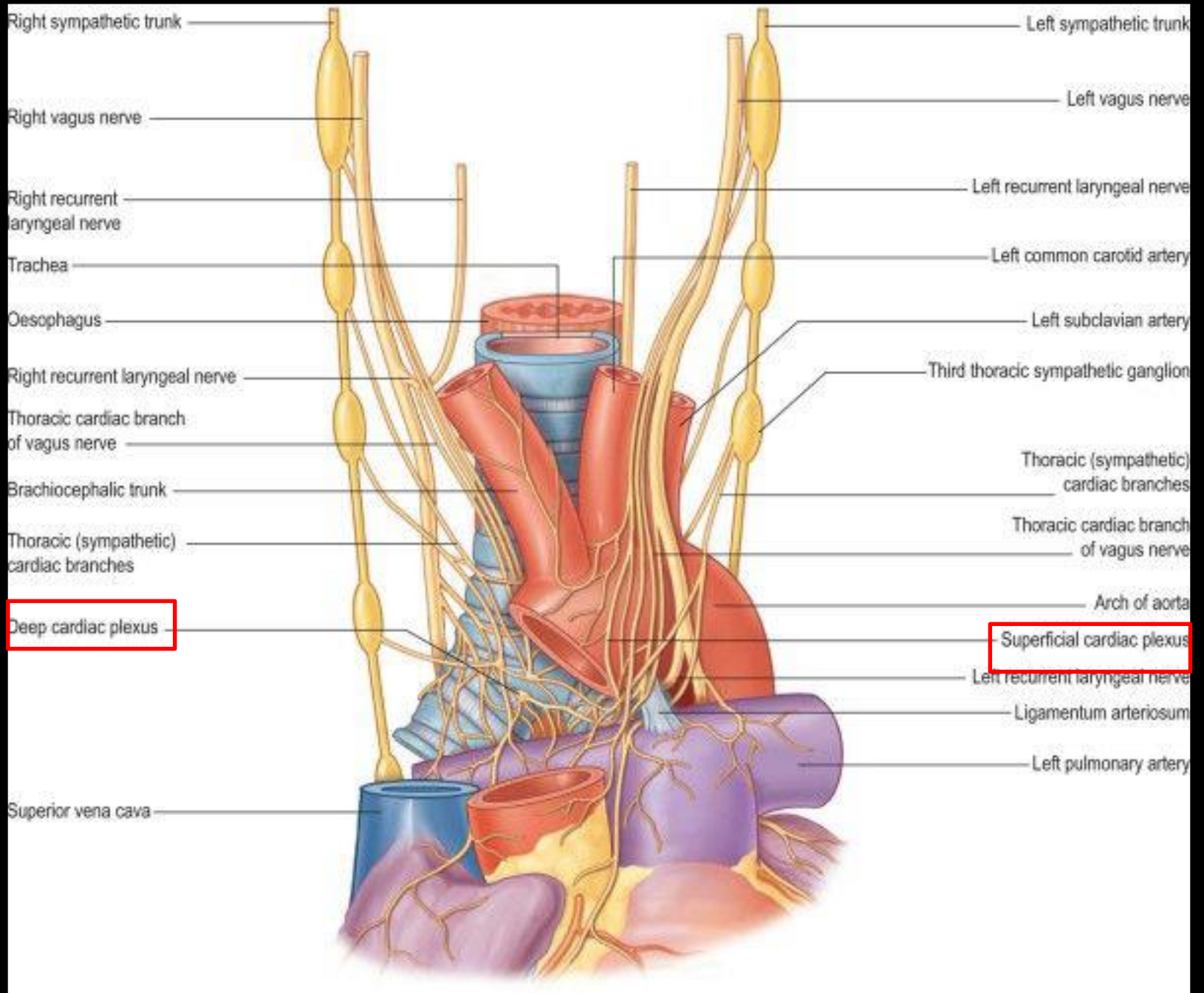
A szív vénái



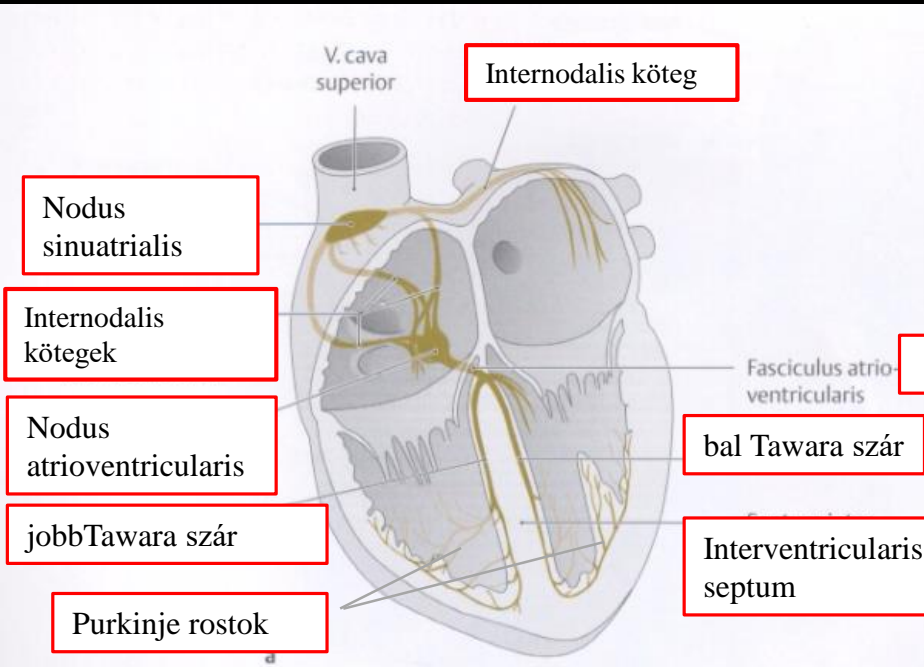


A szív beidegzése





Ingerületképző és vezető rendszer



His-kötek

bal Tawara szár

Interventricularis septum

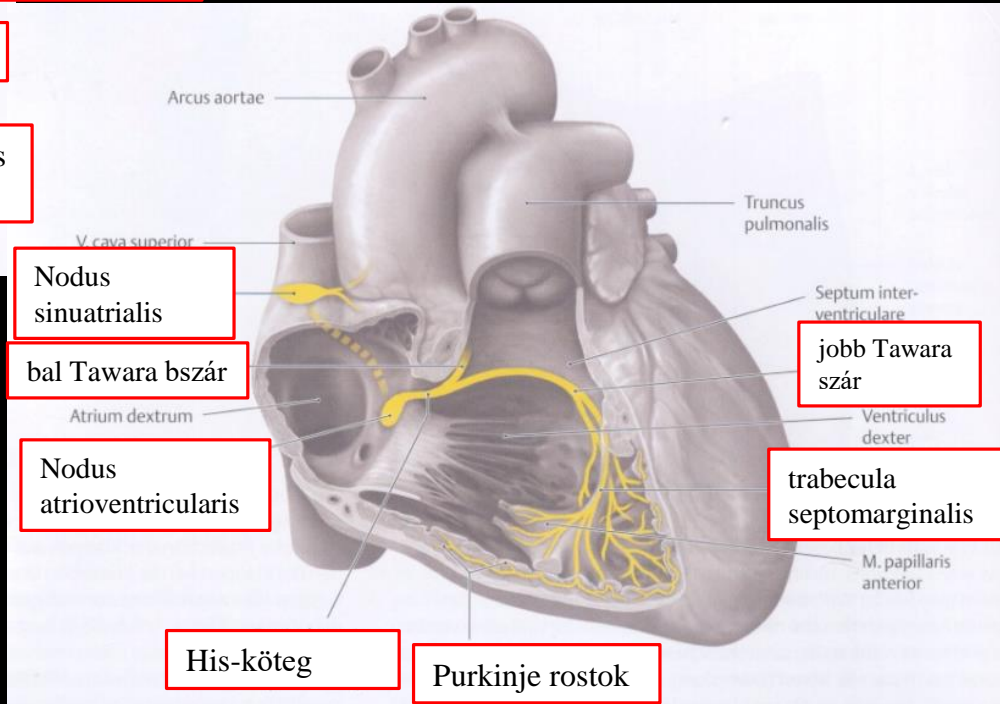
Nodus sinuatrialis

bal Tawara bszár

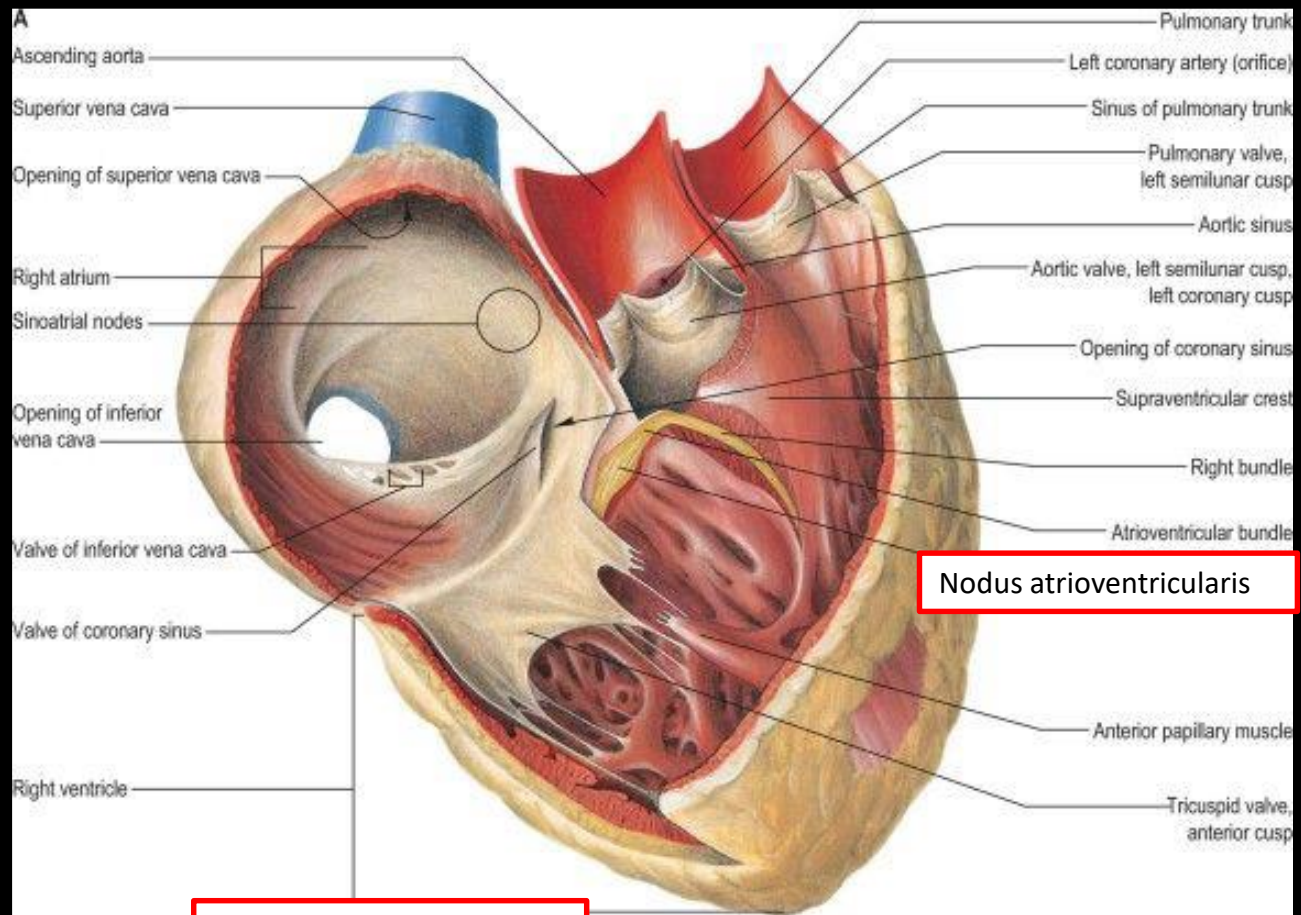
Nodus atrioventricularis

His-köteg

Purkinje rostok



Nodus atrioventricularis helyzete



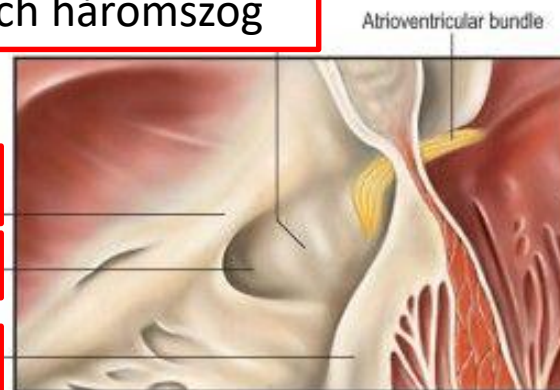
Nodus atrioventricularis

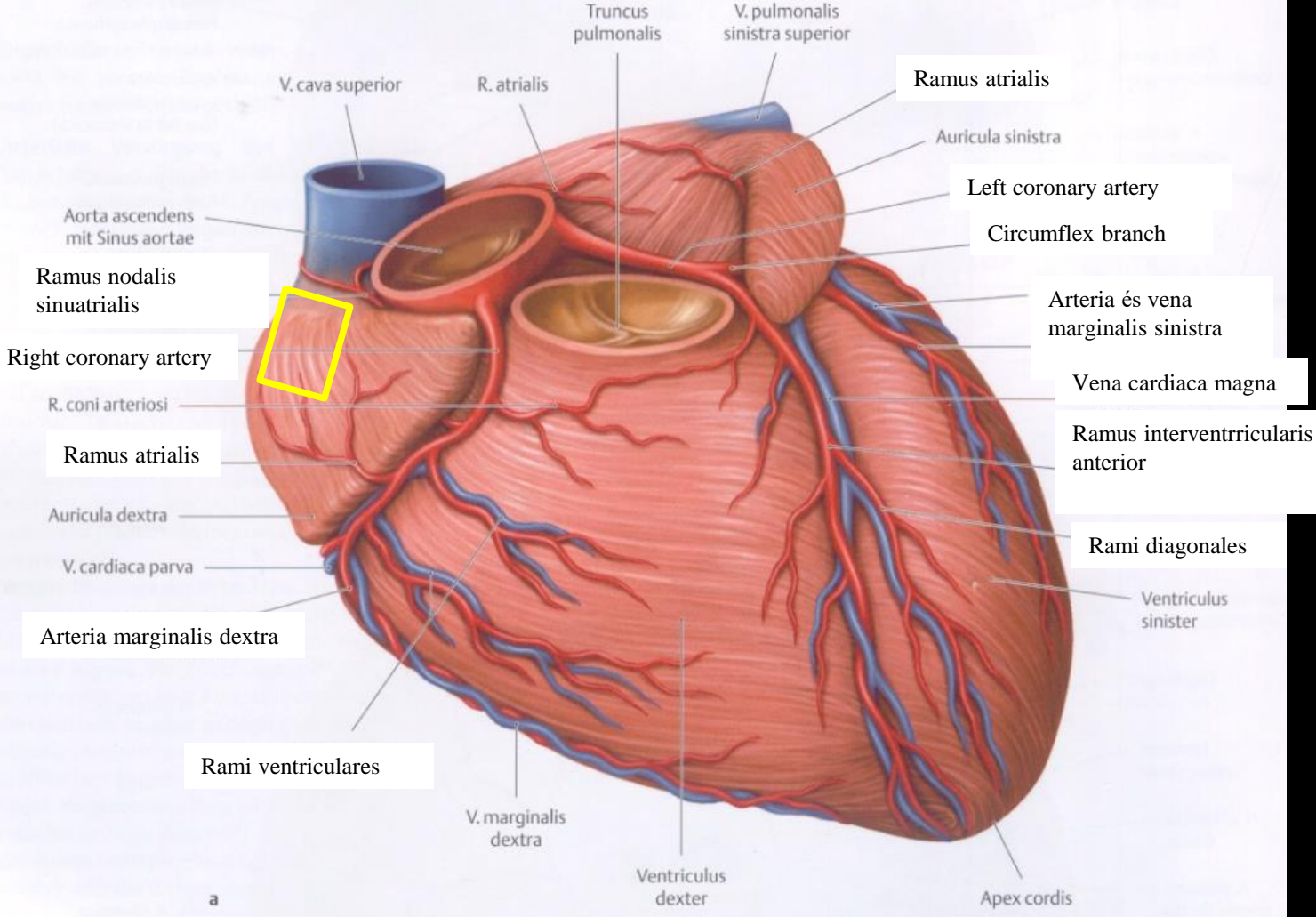
Koch háromszög

Todaro ín

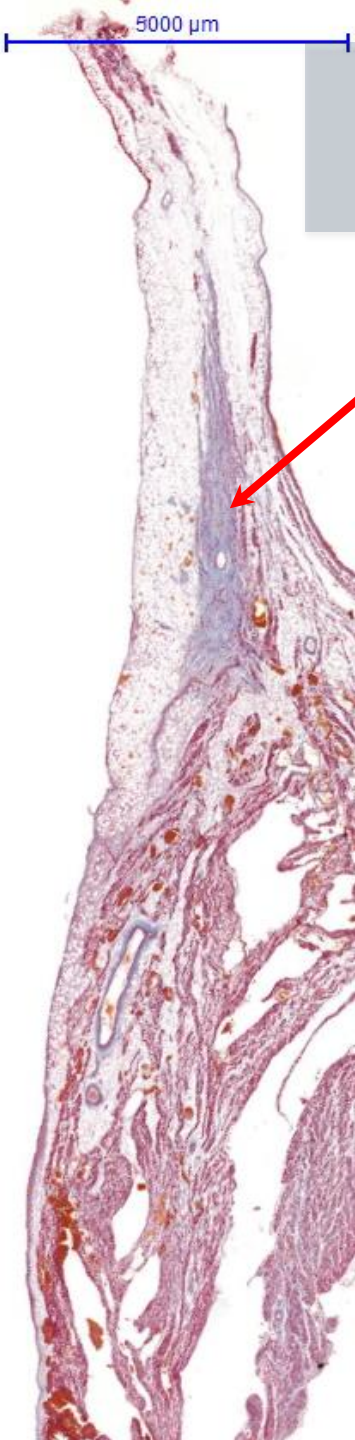
Sinus coronarius nyílása

Cuspid septalis felső része





a

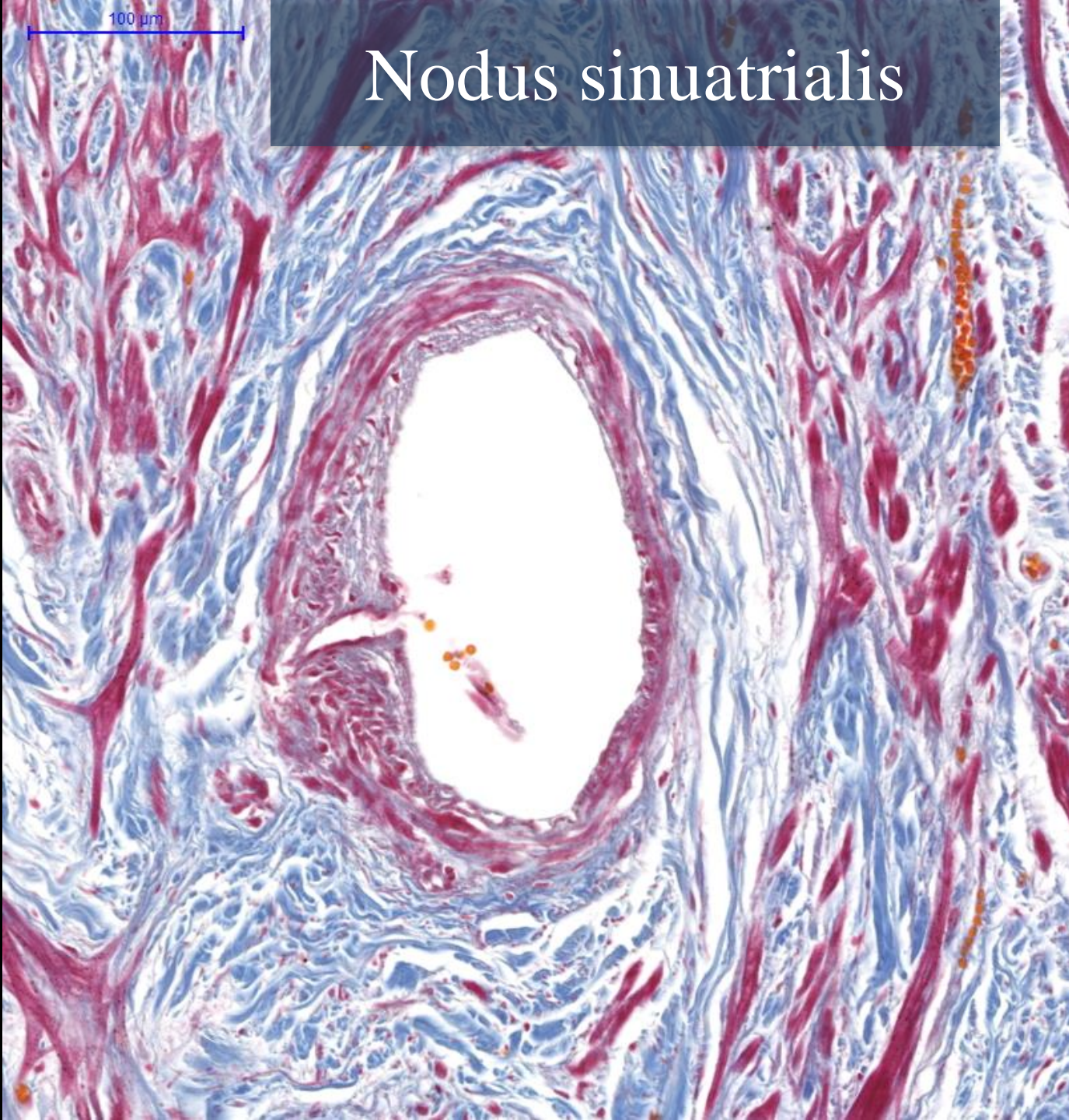


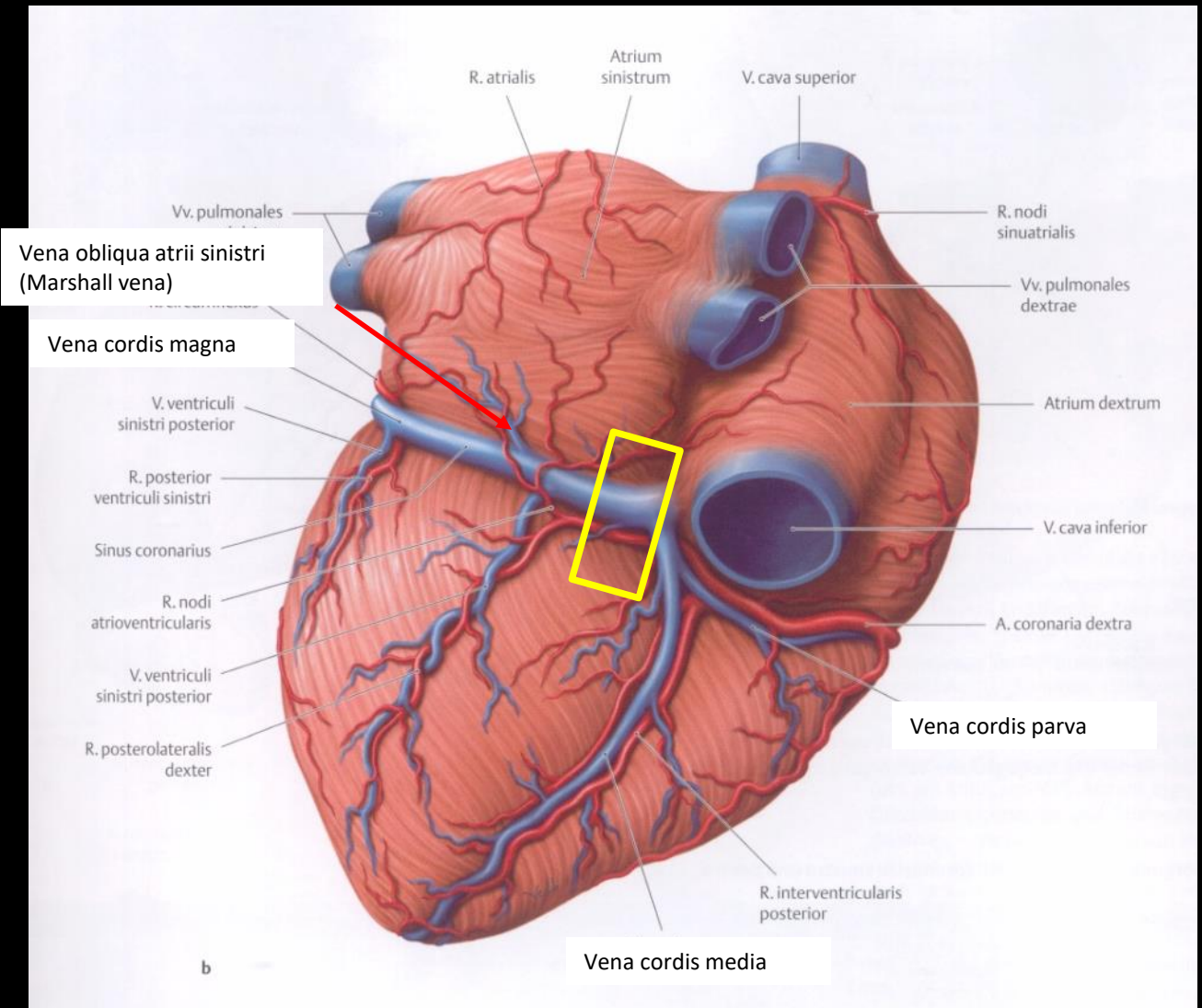
Nodus sinuatrialis

Crista terminalis

100 μ m

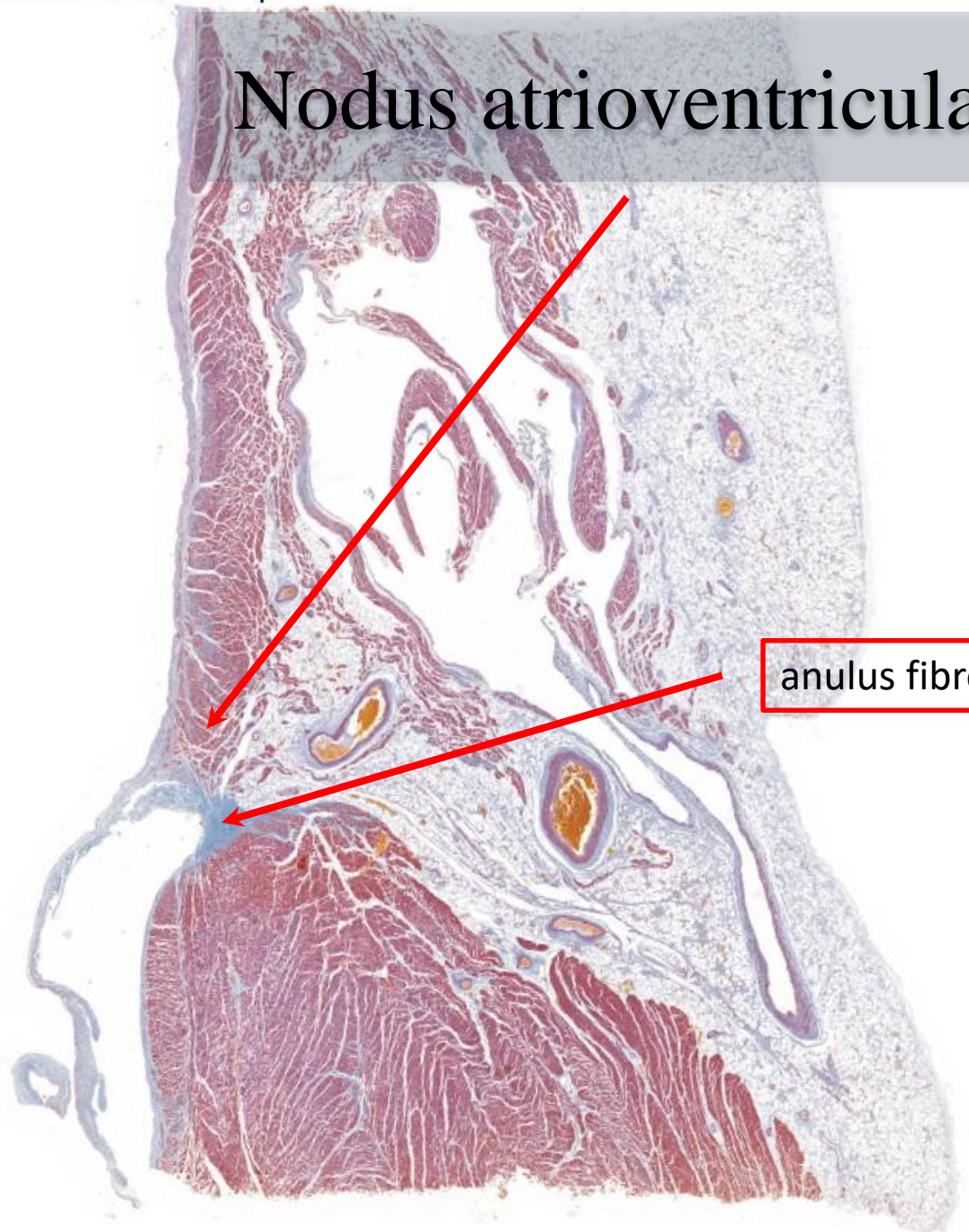
Nodus sinuatrialis





5000 μm

Nodus atrioventricularis



anulus fibrosus

Nodus atrioventricularis

