



Szájüreg, torokszoros, lágy szájpad

Dr. Gerber Gábor

Rima oris



Nasal septum

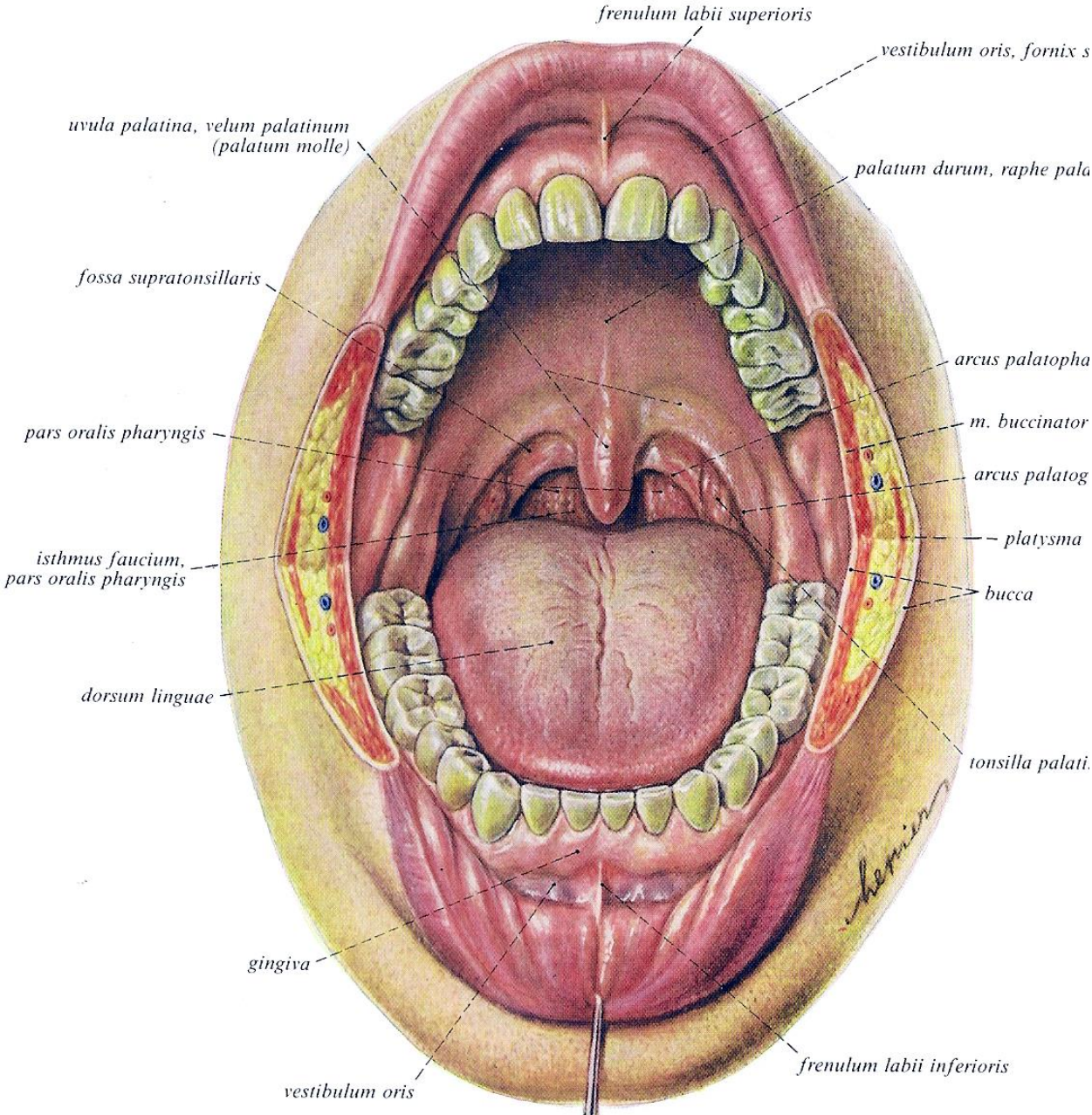
Philtrum

Vermilion border

Tuberculum labii superioris

Vermilion

Vestibulum et cavum oris proprium



Cavum oris részei

Vestibulum oris határai:

lateralis: bucca

elülső: ajkak

medialis: fogsorívek

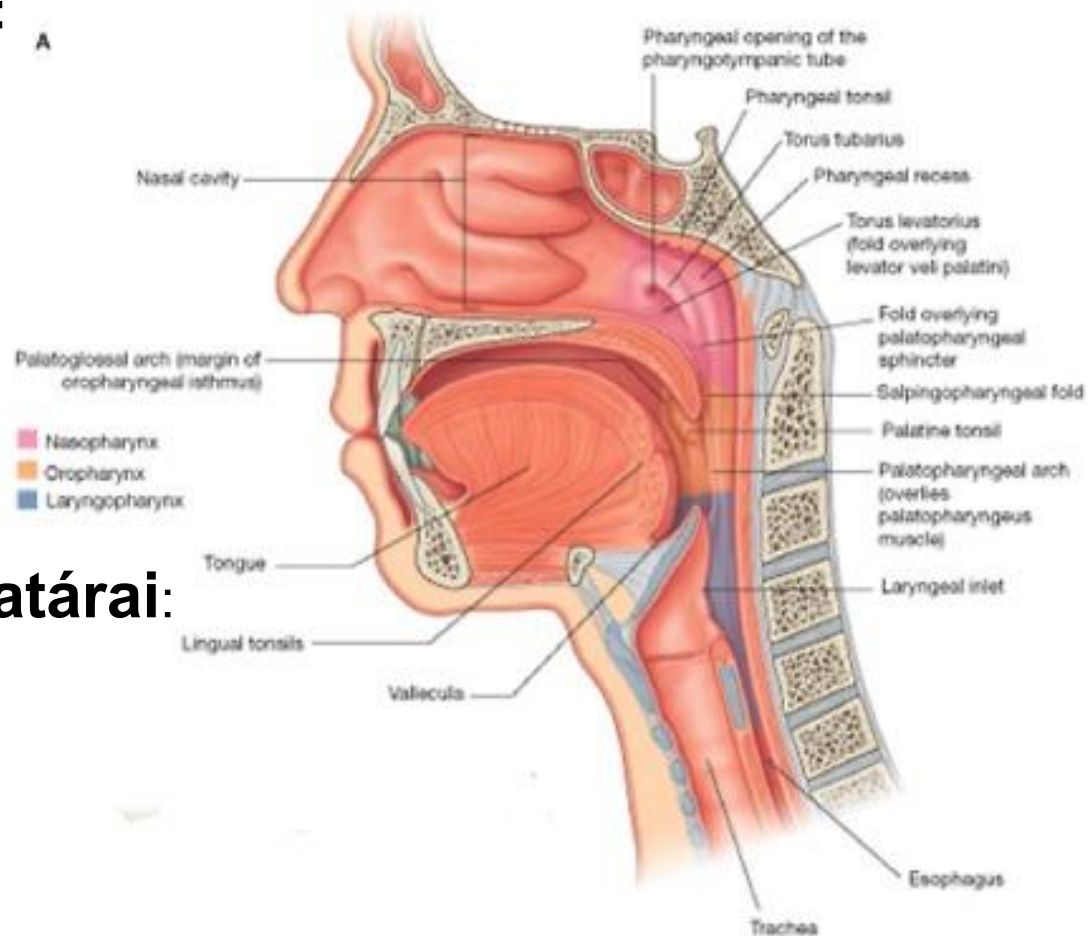
Cavum oris proprium határai:

külső: fogsorívek

teteje: szájpad

alulról: szájfenék

hátról: isthmus faucium



Palatum durum et molle

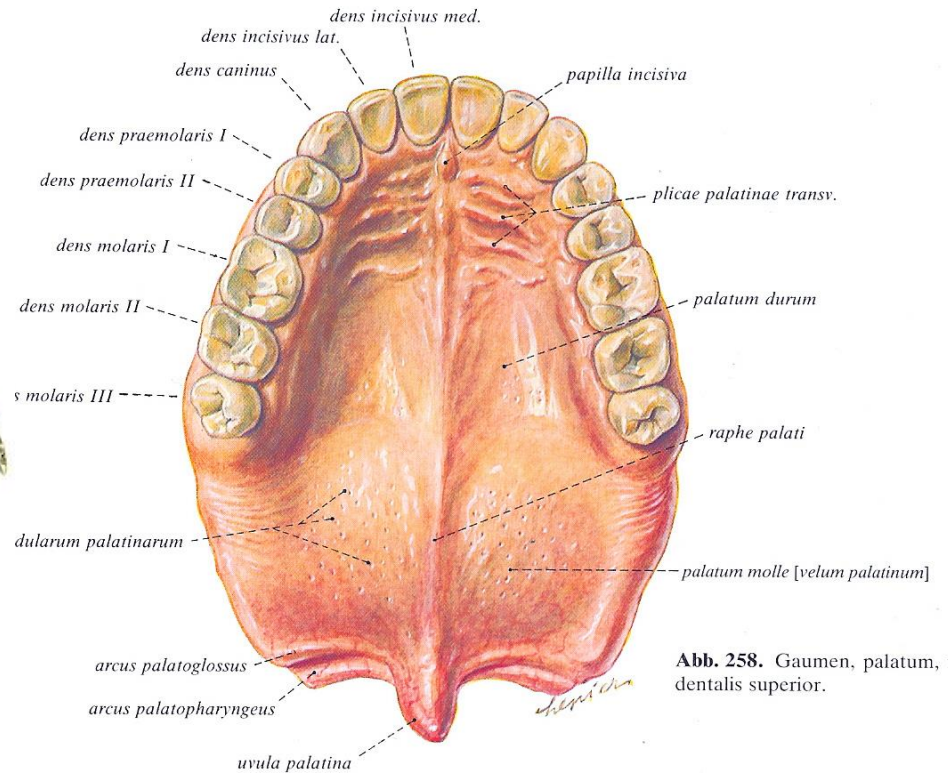
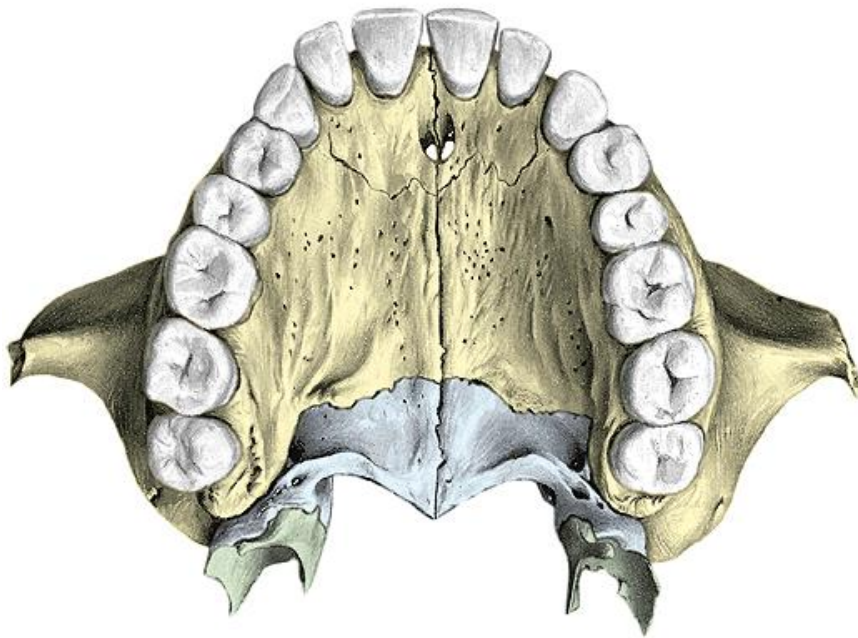
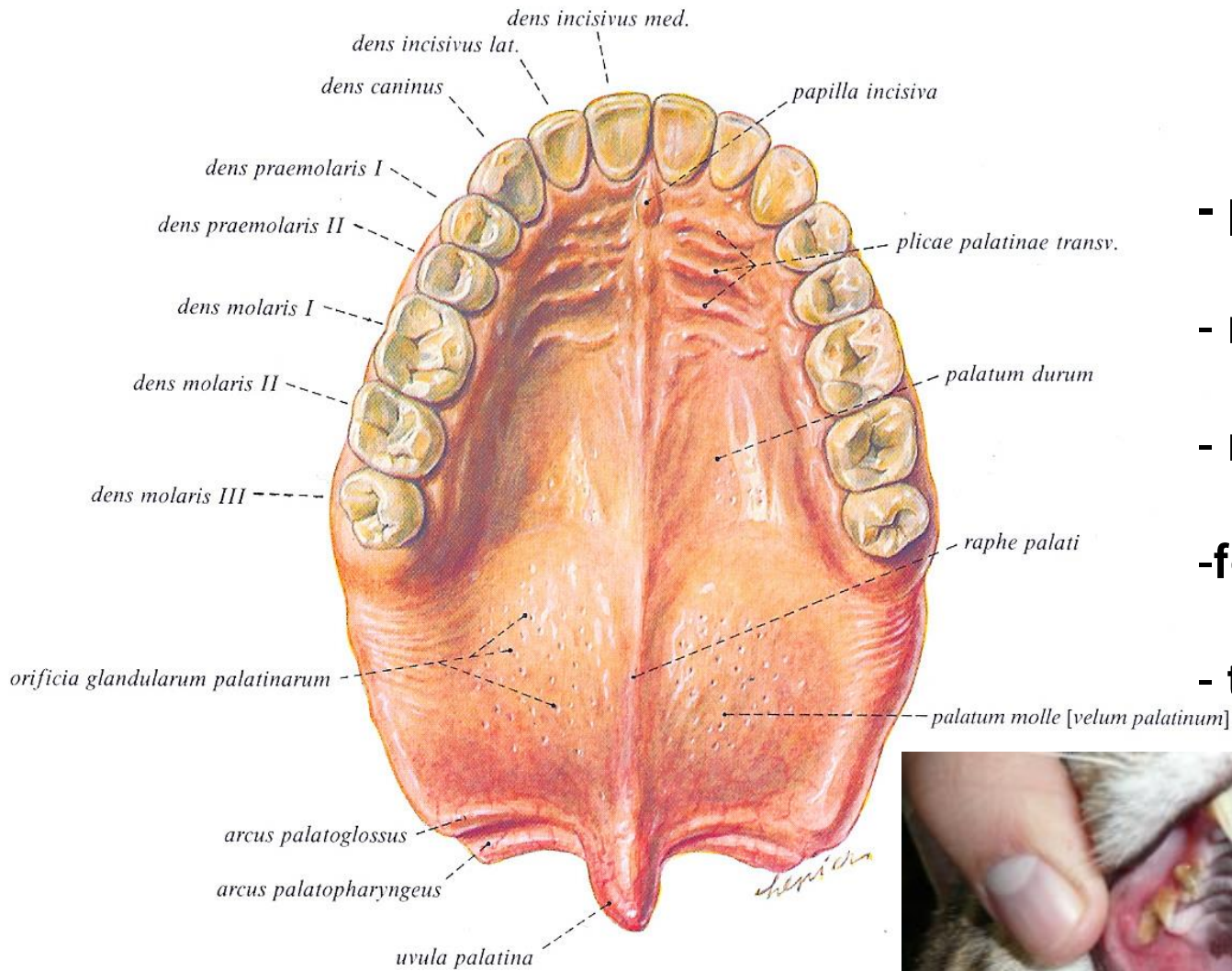


Abb. 258. Gaumen, palatum, mit arcus palatoglossus et palatopharyngeus, uvula palatina, palatum durum et molle, papilla incisiva, plicae palatinae transverse, raphe palati, dularum palatinarum, arcus palatoglossus et palatopharyngeus, uvula palatina, palatum molle [velum palatinum].

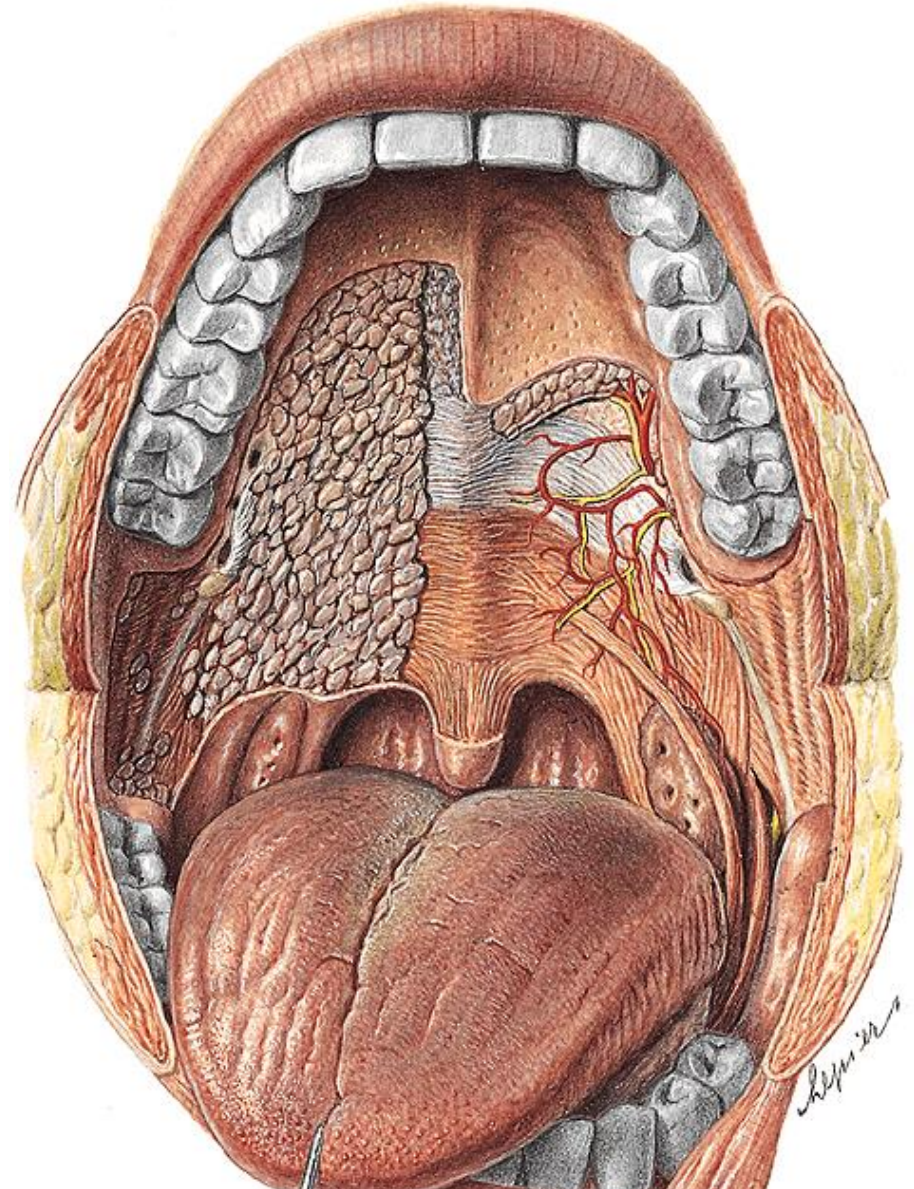
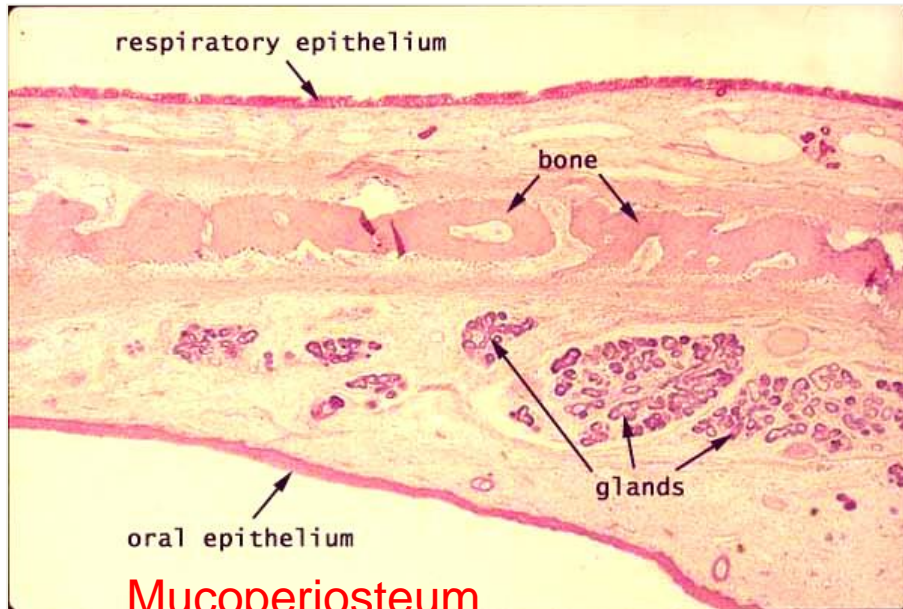


- **papilla incisiva**
- **rugae palatinae**
- **raphe palati**
- **foveolae palatinae**
- **torus palatinus**

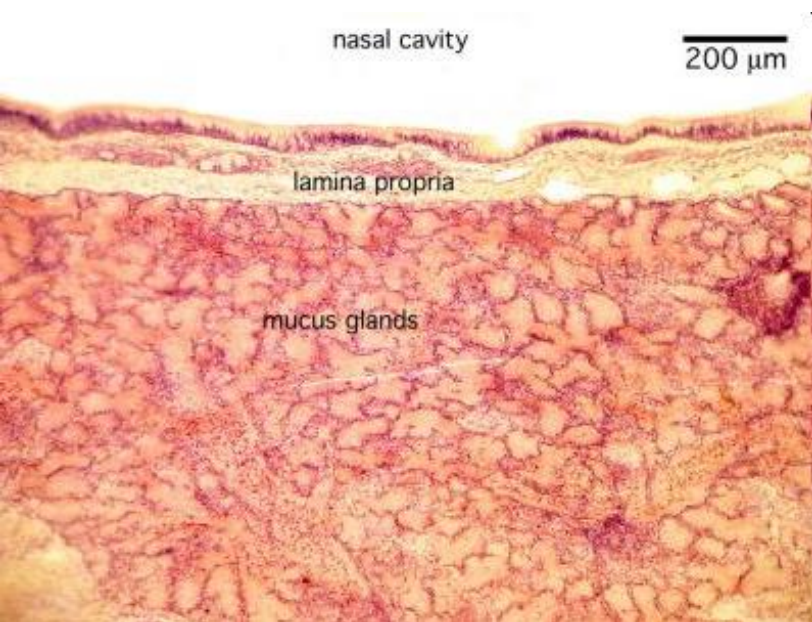


Palatum szerkezete

- mucosa
- glandula palatinae
- csont / izmok



Palatum szövettana

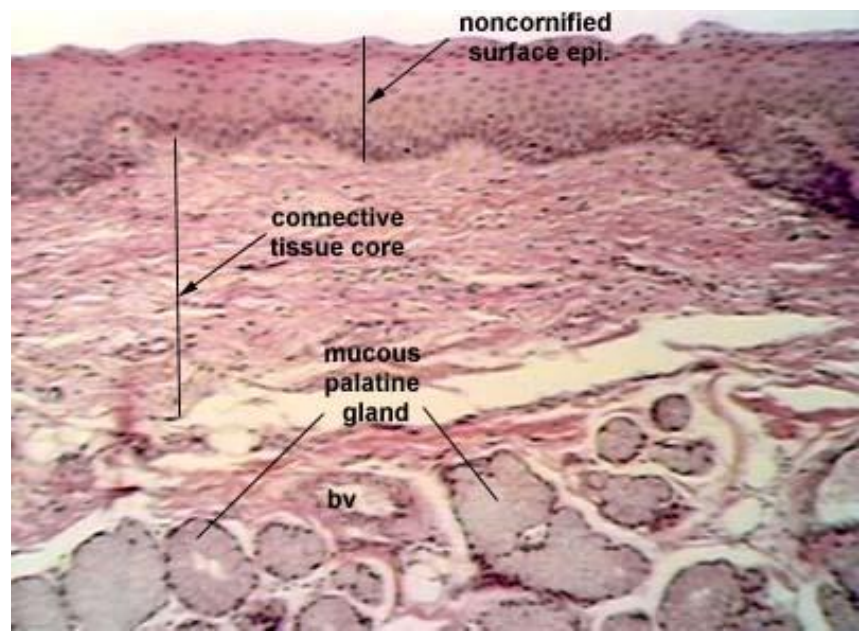


Orrüregi felszín

- Többszörös csillószerűs hengerhám
- lamina propria
- mucinosus mirigy
- harántcsíkt izom

Szájüregi felszín

- Többrétegű el nem szarusodó lapphám



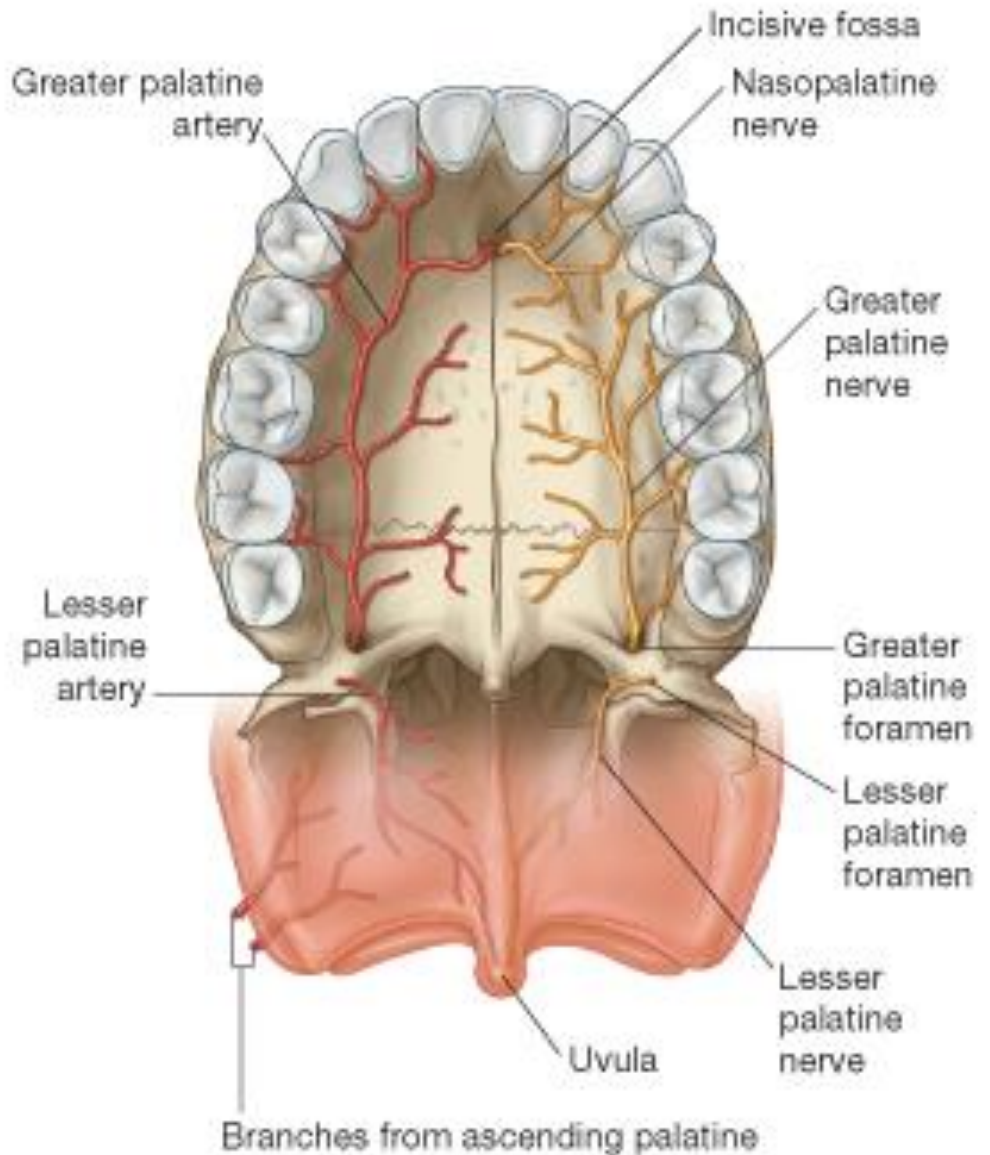
A szájpad vérellátása:

- a. palatina descendens (a. maxillaris)
- a. palatina ascendens (a. facialis)

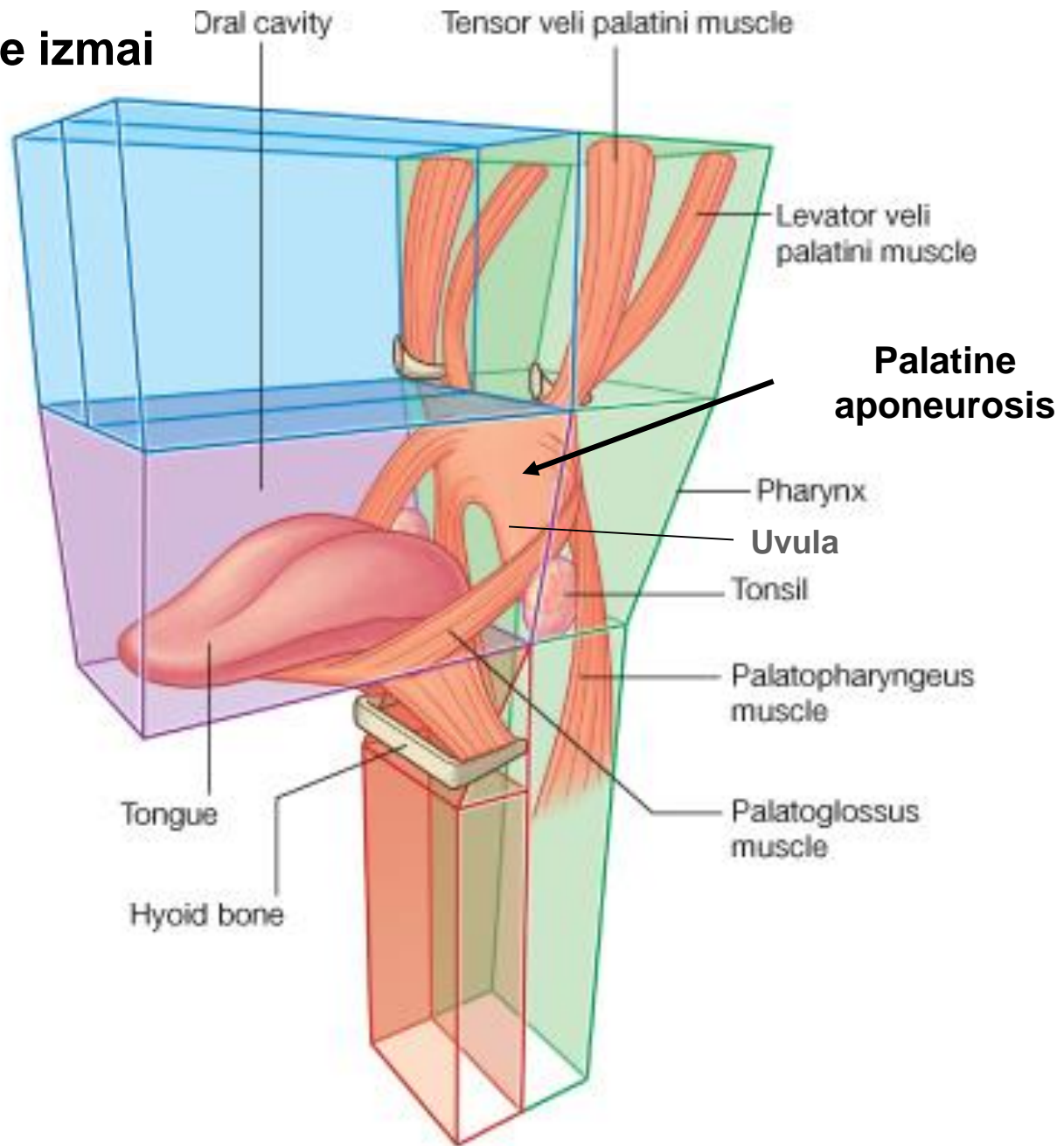
A szájpad beidegzése:

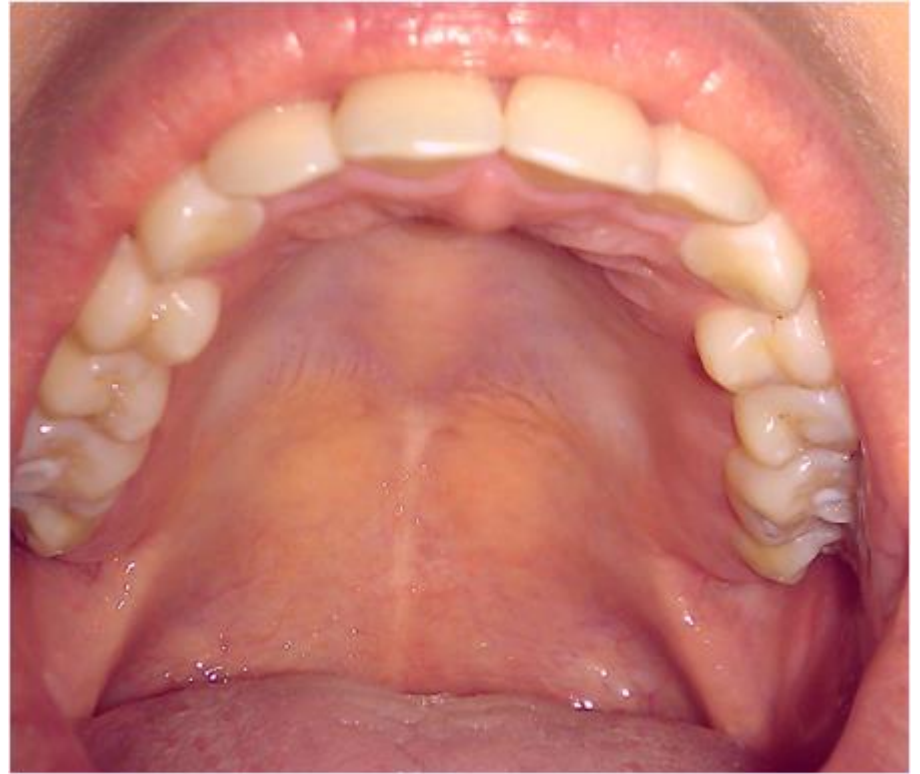
- n. nasopalatinus
- n. palatinus majus
- nn. palatini minores

Ér- és idegellátás

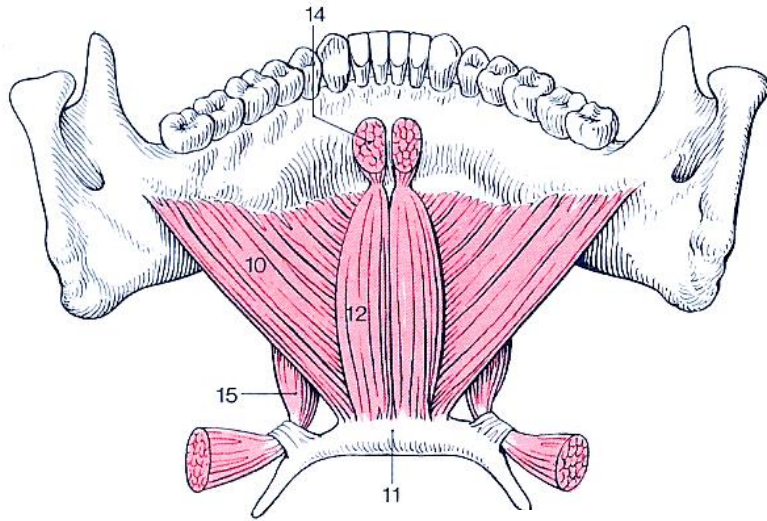


Palatum molle izmai

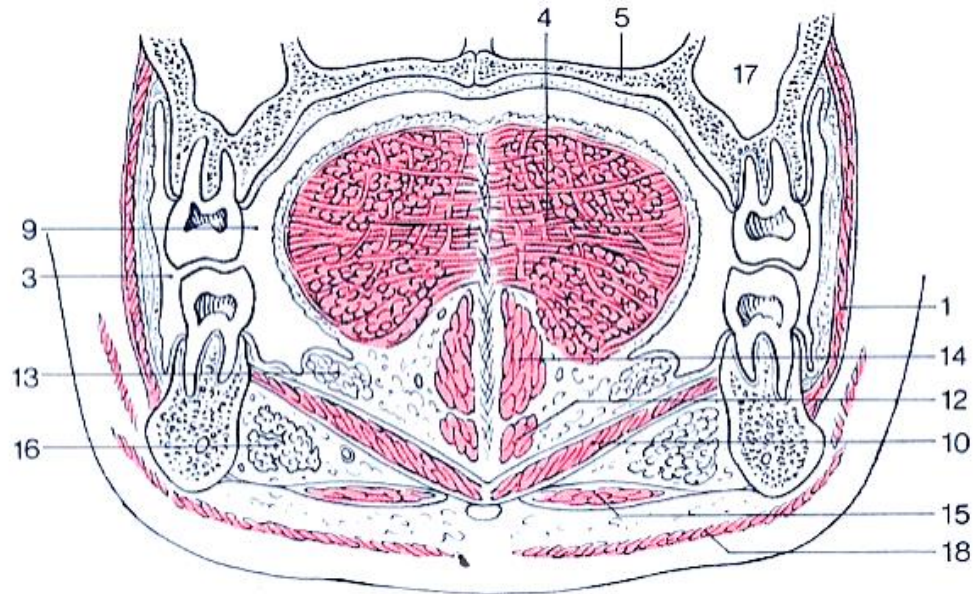




szájfenék



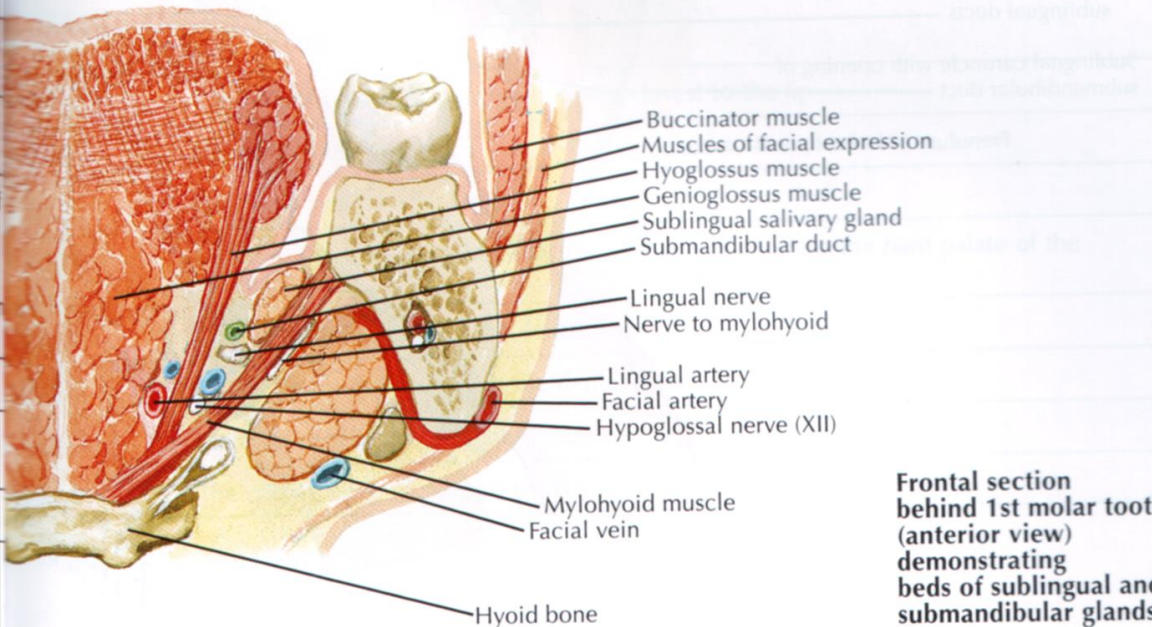
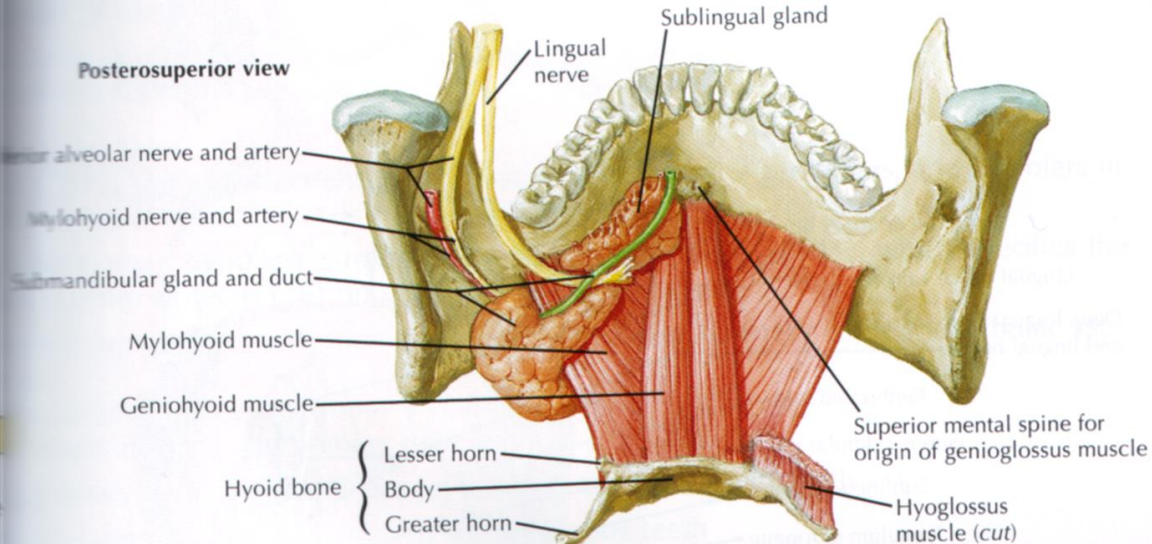
m. mylohyoideus



A Frontal section of oral cavity

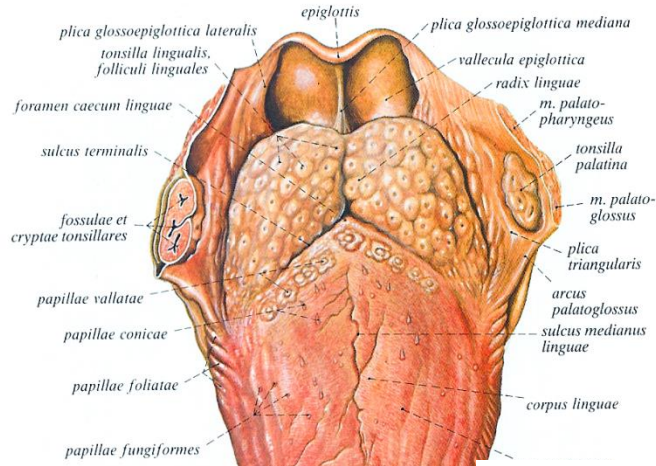
Diaphragma oris

m. mylohyoideus



F. Netter M.D.

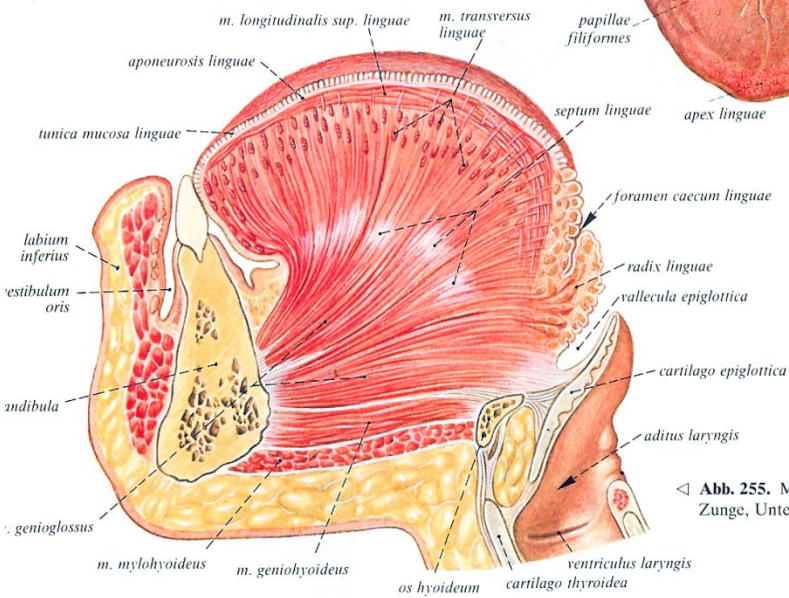
Nyelv (lingua)



V/3
VII
IX
X.

Taste

Somatic sensation



◁ Abb. 255. Mediansagitt Zunge, Unterkiefer und

Vagus n. (CN X)

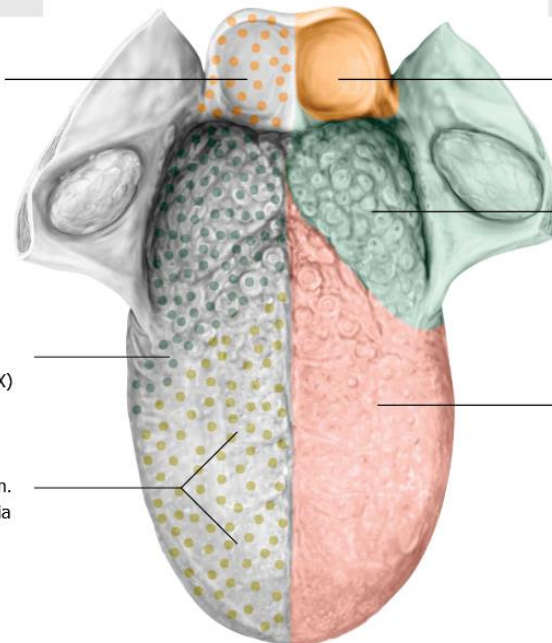
Vagus n. (CN X)

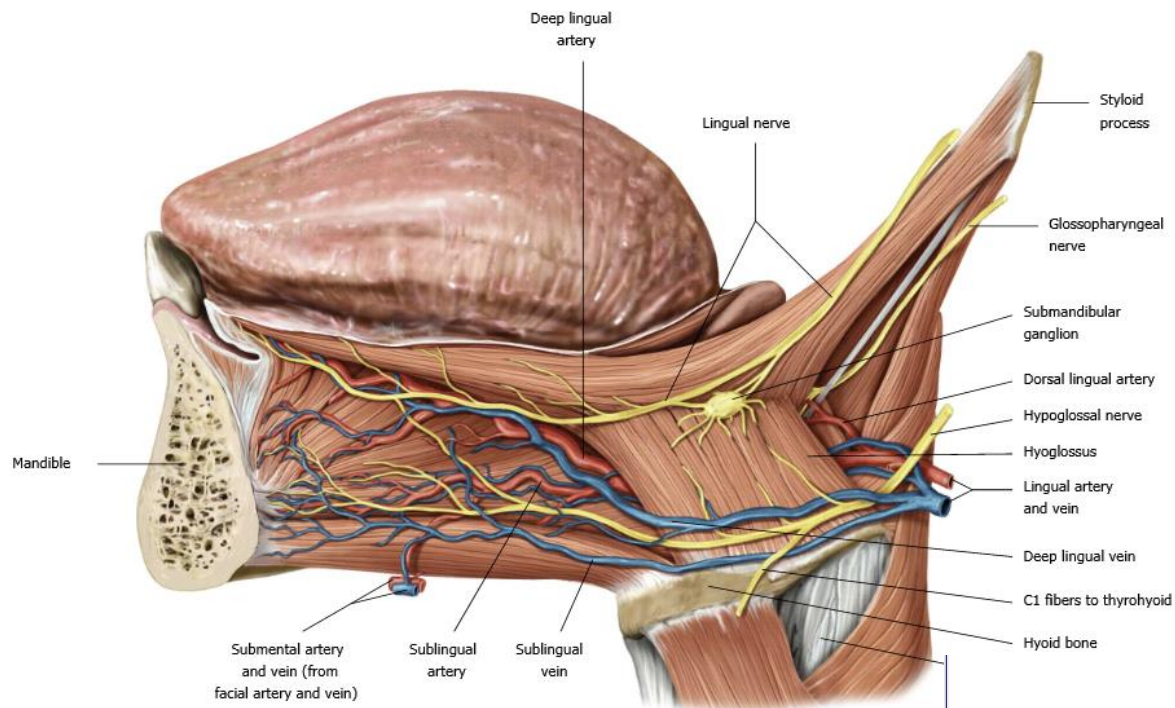
Glossopharyngeal n. (CN IX)

Glossopharyngeal n. (CN IX)

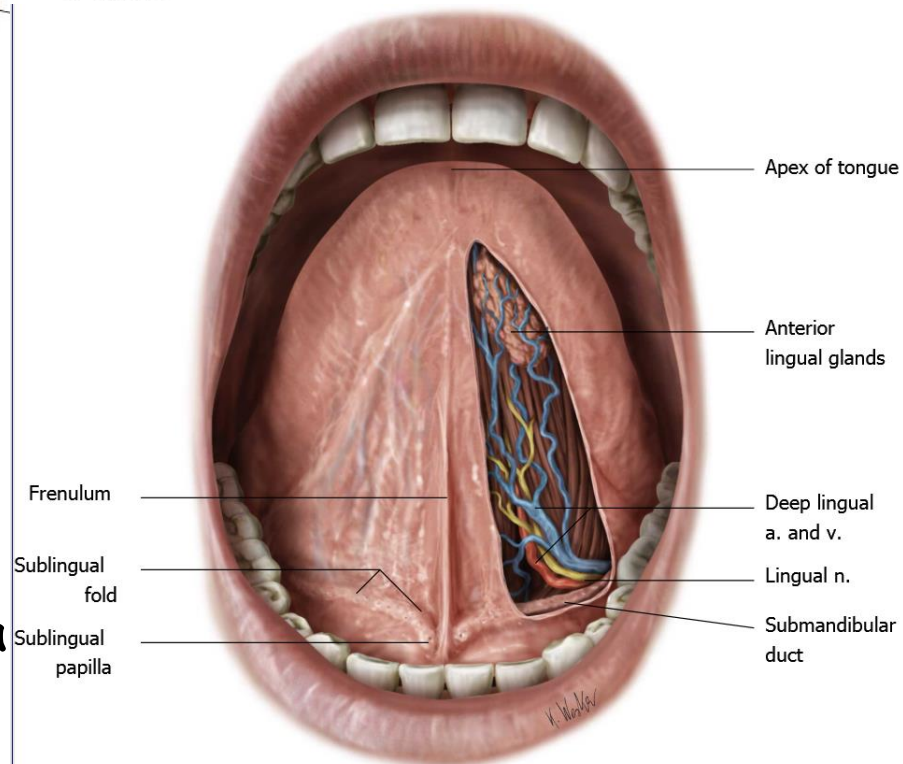
Facial n. (CN VII, via chorda tympani)

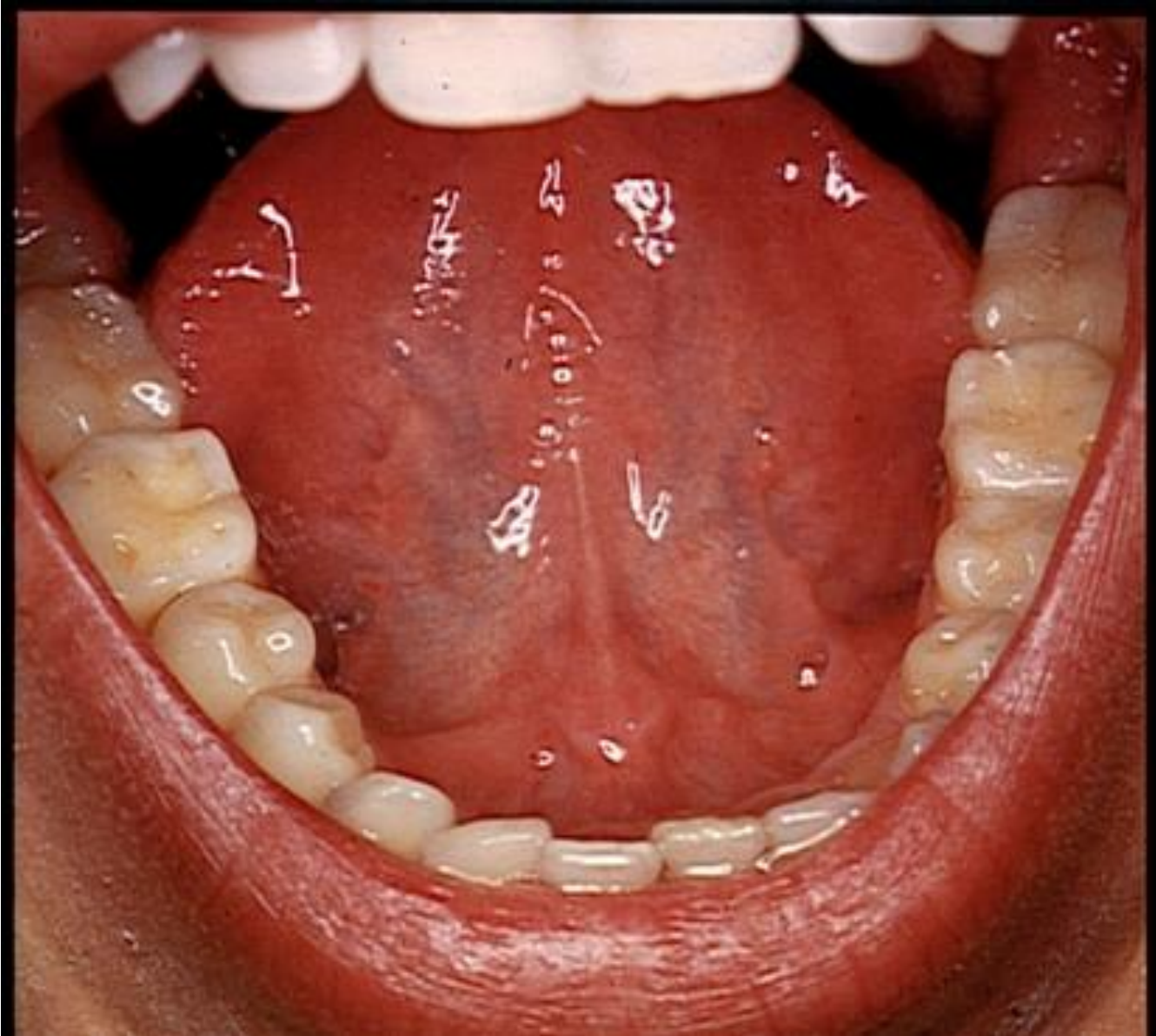
Lingual n. (mandibular n., CN V 3)





- frenulum linque
- vena lingualis profunda
- plica fimbriata
- plica sublingualis
- caruncula sublingualis (papilla)
a ductus submandibularis és a
ductus sublingualis major nyílása





Sulcus lateralis linguae

Határai:

medialis: m. hyoglossus

lateralis: m. mylohyoideus

superior: sublingualis mucosa

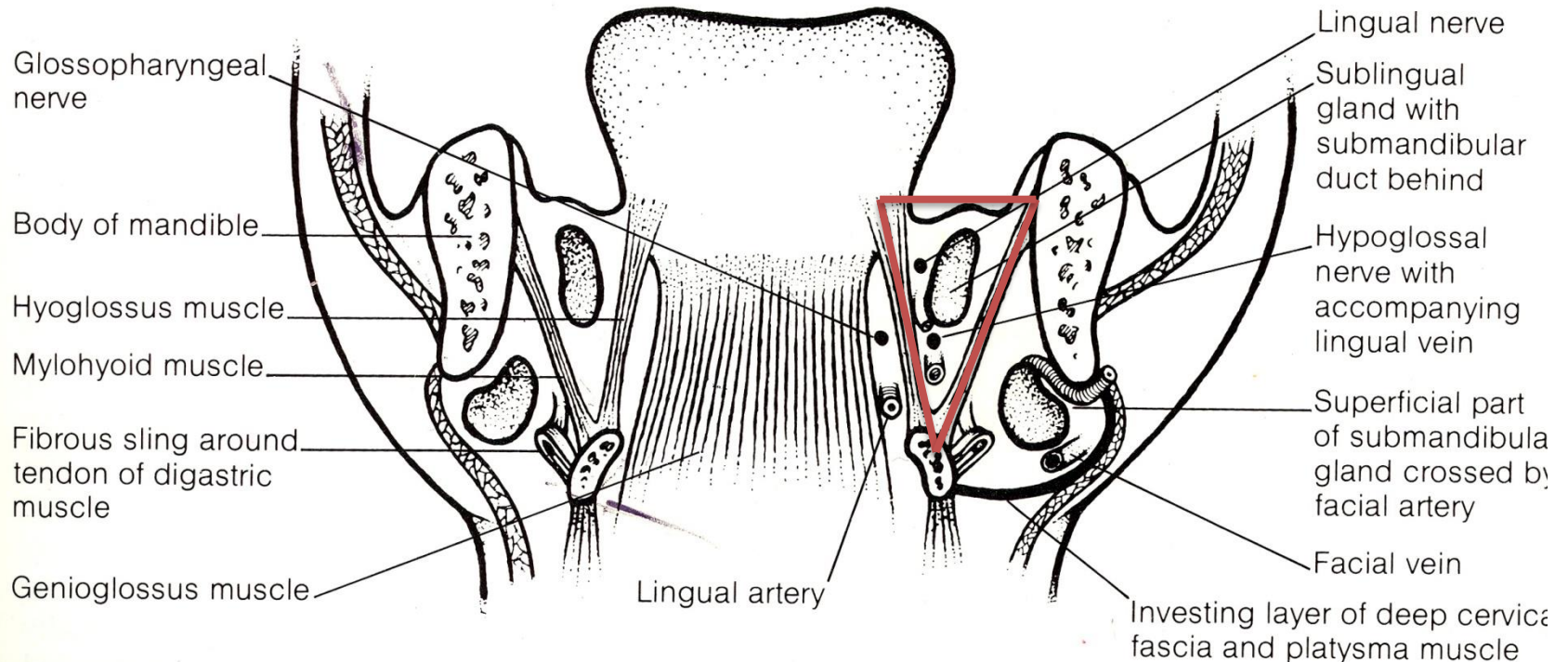
Tartalma:

- n. lingualis

- Ductus submandibularis

- n. hypoglossus

- v. profunda linguae



Sulcus medialis linguae

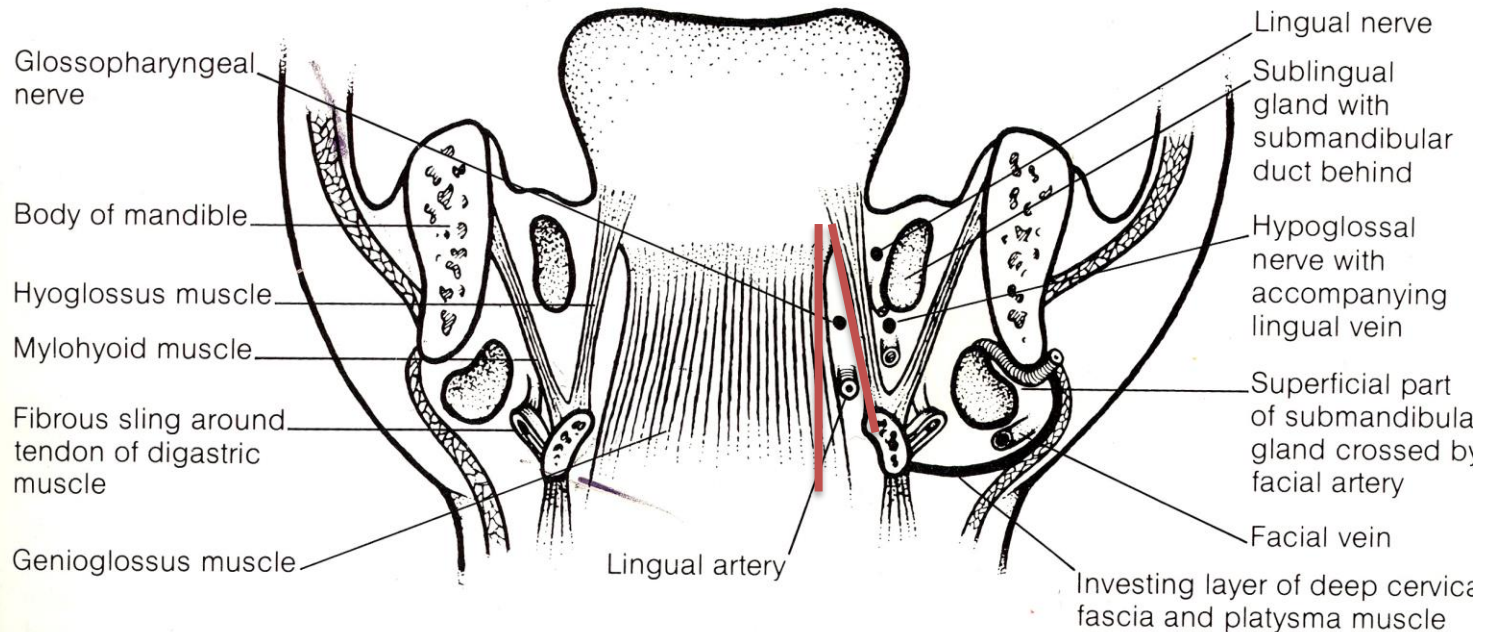
HATÁRAI:

medialis: musculus genioglossus

lateralis: musculus hyoglossus

TARTALMA: arteria lingualis

nervus glossopharyngeus (hátsó részében)



leukoplakia



Squamous cell
carcinoma



ISTHMUS FAUCIUM

Határok:

superior: palatum molle

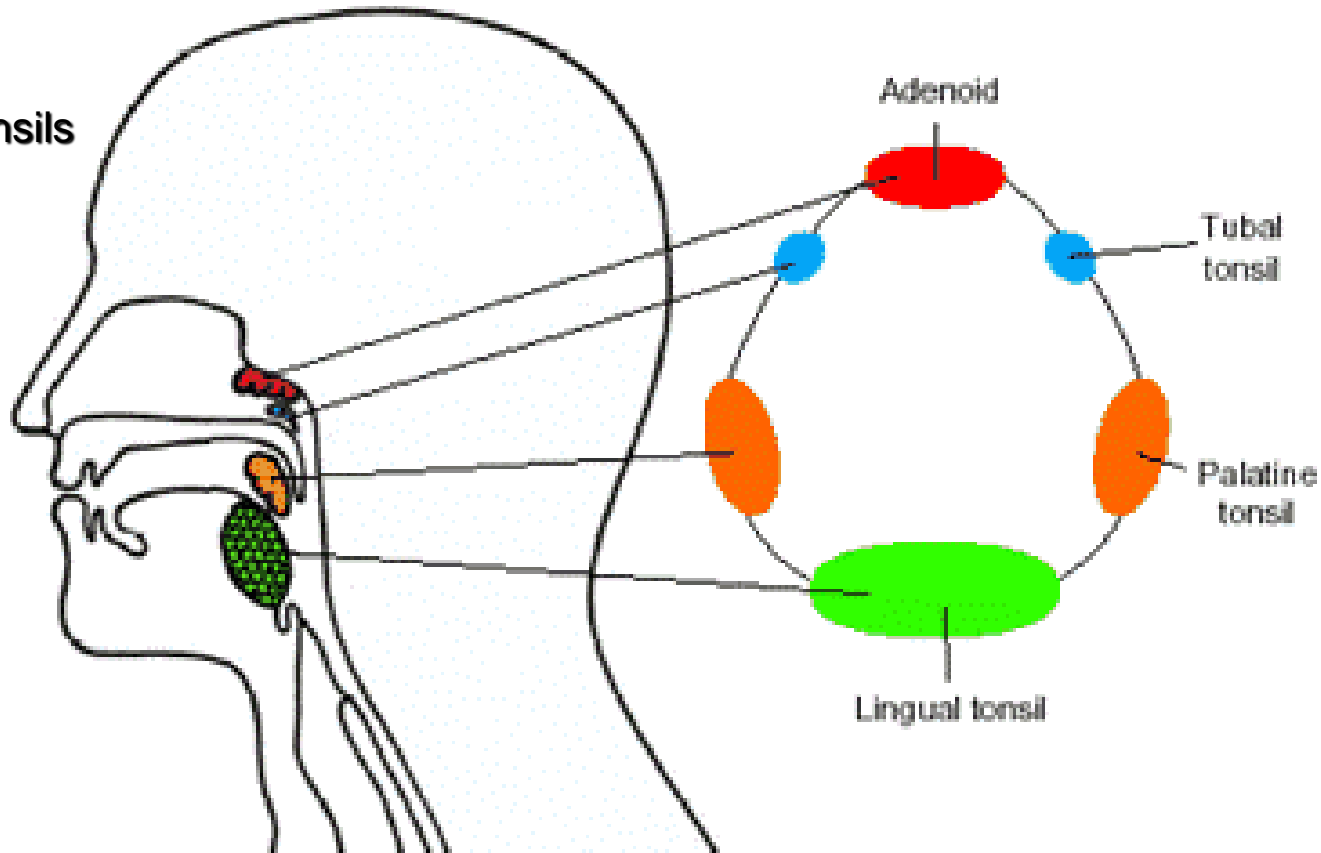
inferior: radix linguae

lateral: garatívek,
arcus palatoglossus,
arcus palatopharyngeus



Waldeyer's lymphatic ring

- pharyngeal
- tubarian
- palatine
- lingual tonsils





Thank you for your attention!

