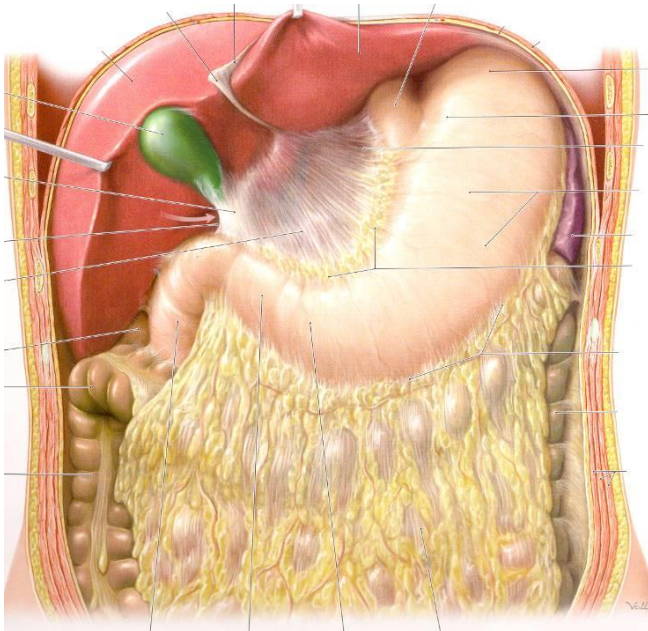
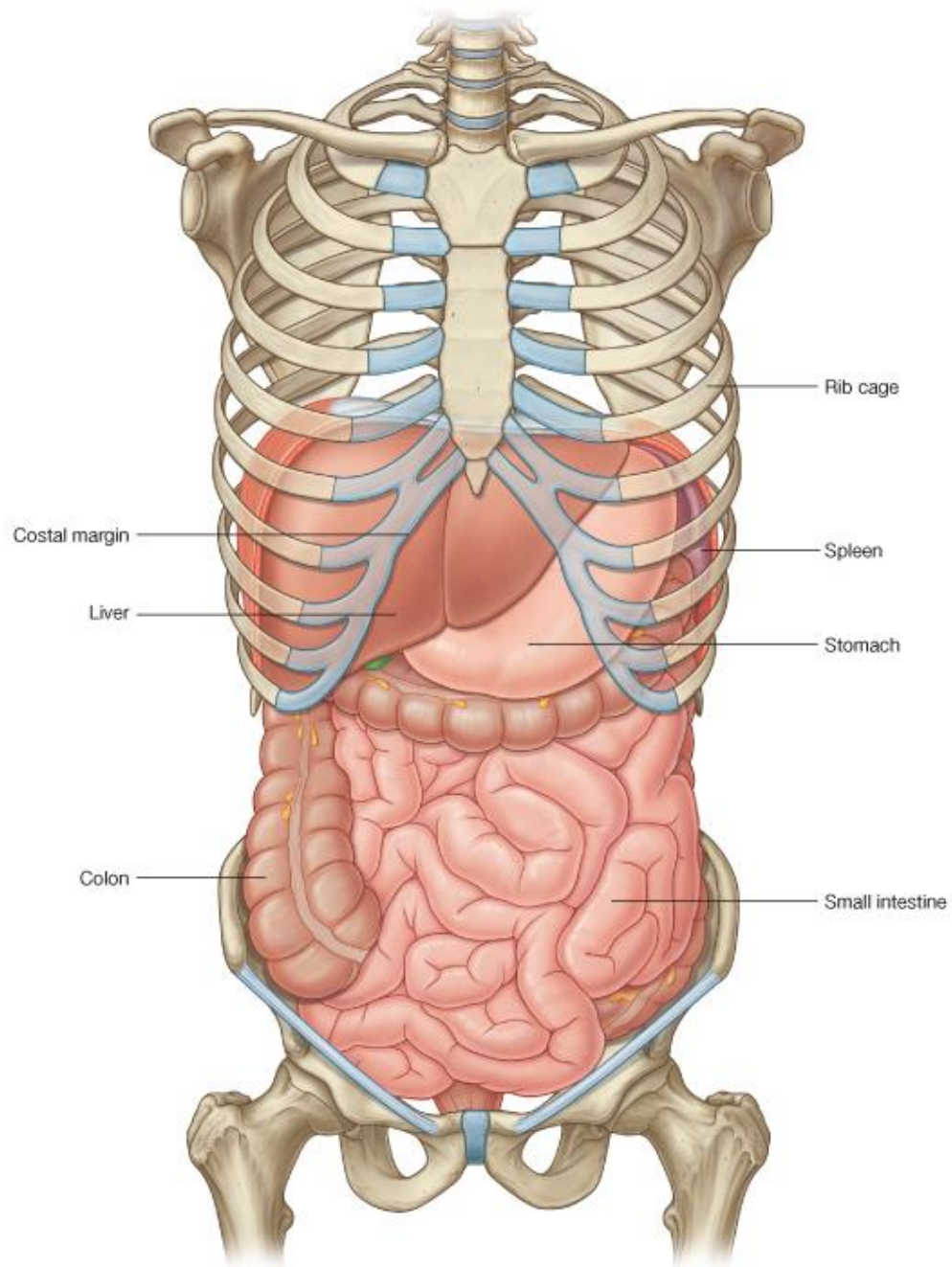


# A hashártya és annak fejlődése. Bursa omentalis.



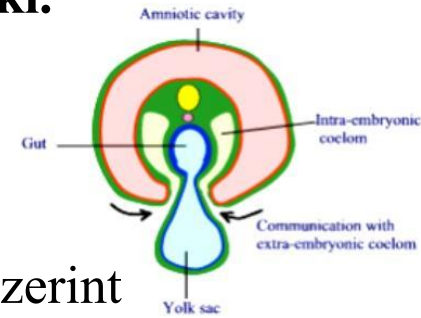
**dr. Hanics János**



**A hashártya (peritoneum) testünk legnagyobb savós hártyája, amely mesodermális származék, az oldallemezből alakult ki.**

Két lemezét különíthetjük el:

- 1. peritoneum parietale**
- 2. peritoneum viscerale**

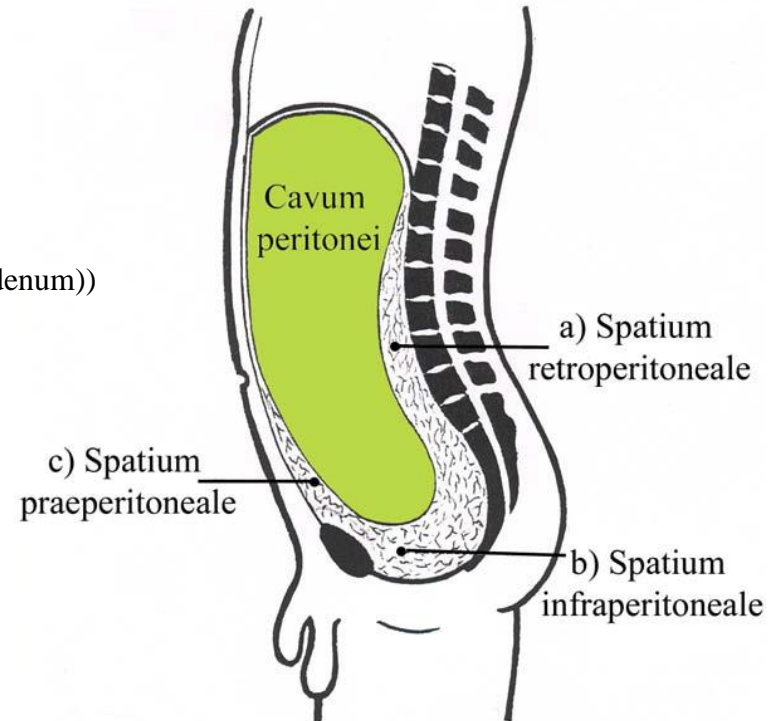
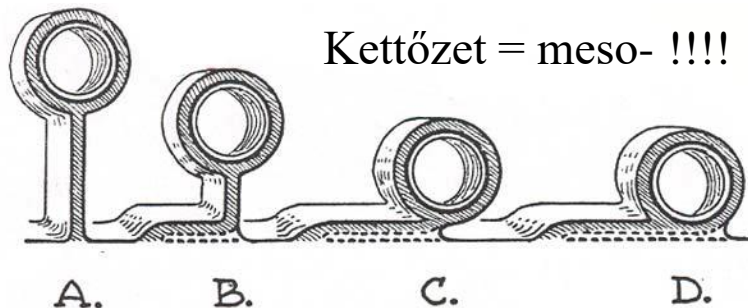


A hasüregi és medencei szervek a hashártyához való viszonyuk szerint lehetnek alapvetően kétfélék lehetnek:

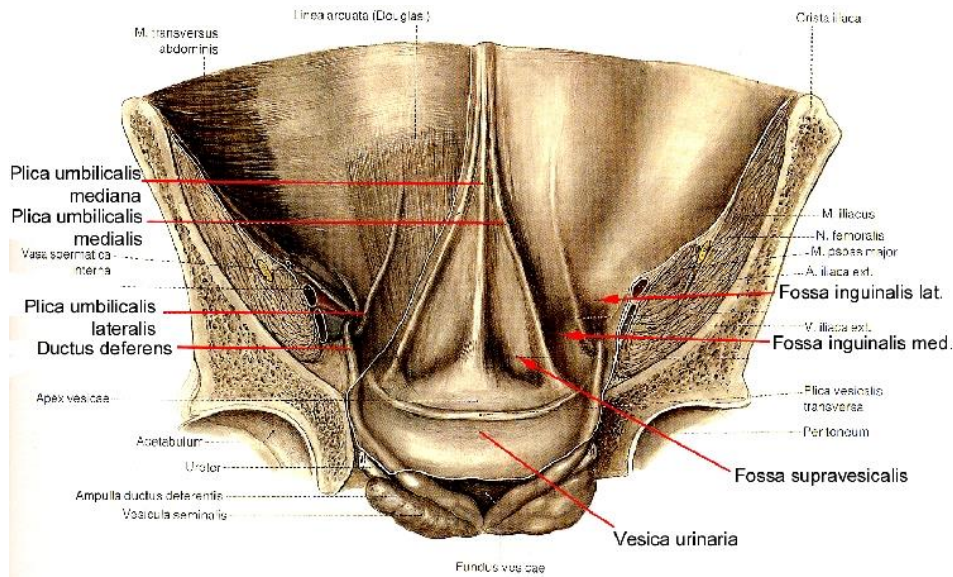
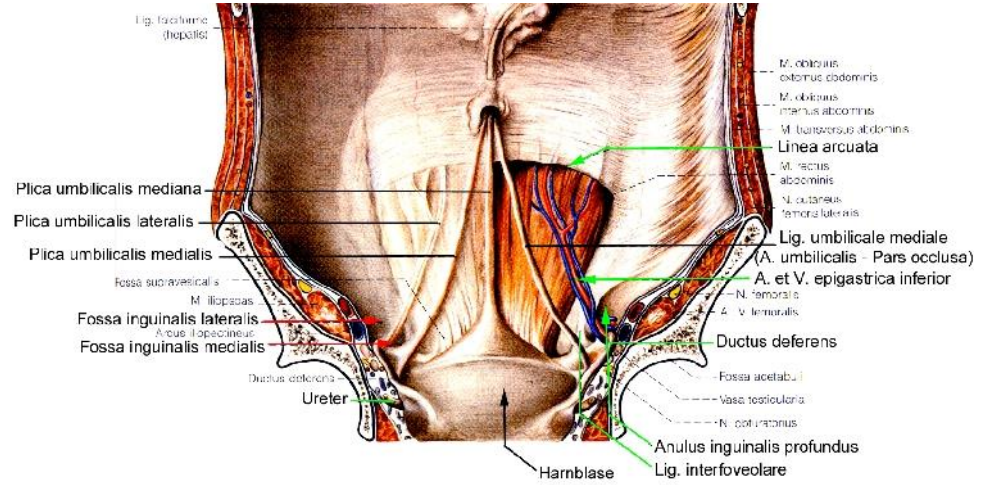
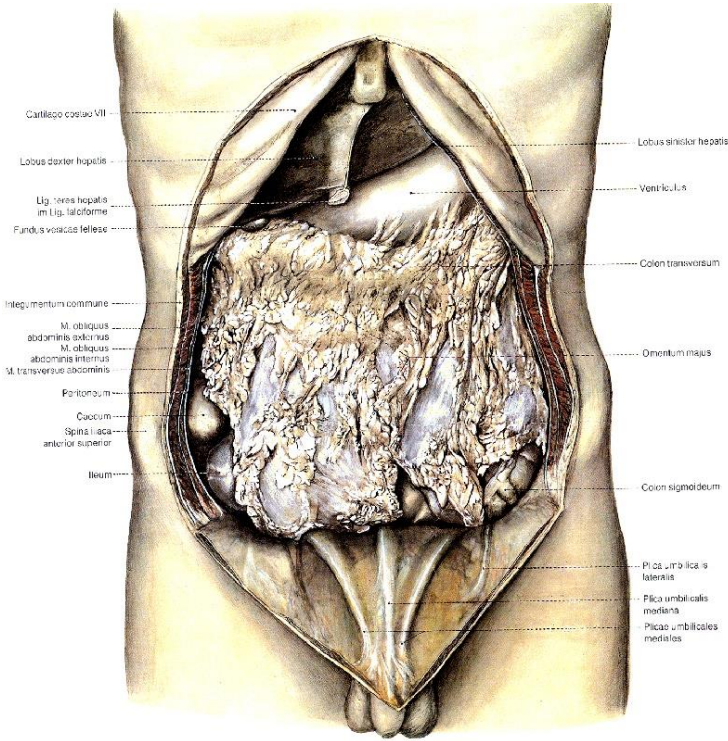
**Intraperitonealisak** - a peritoneum zsigeri lemeze által borítottak, melyekhez általában hashártyakettőzet húzódik

**Extraperitonealisak, ezen belül:**

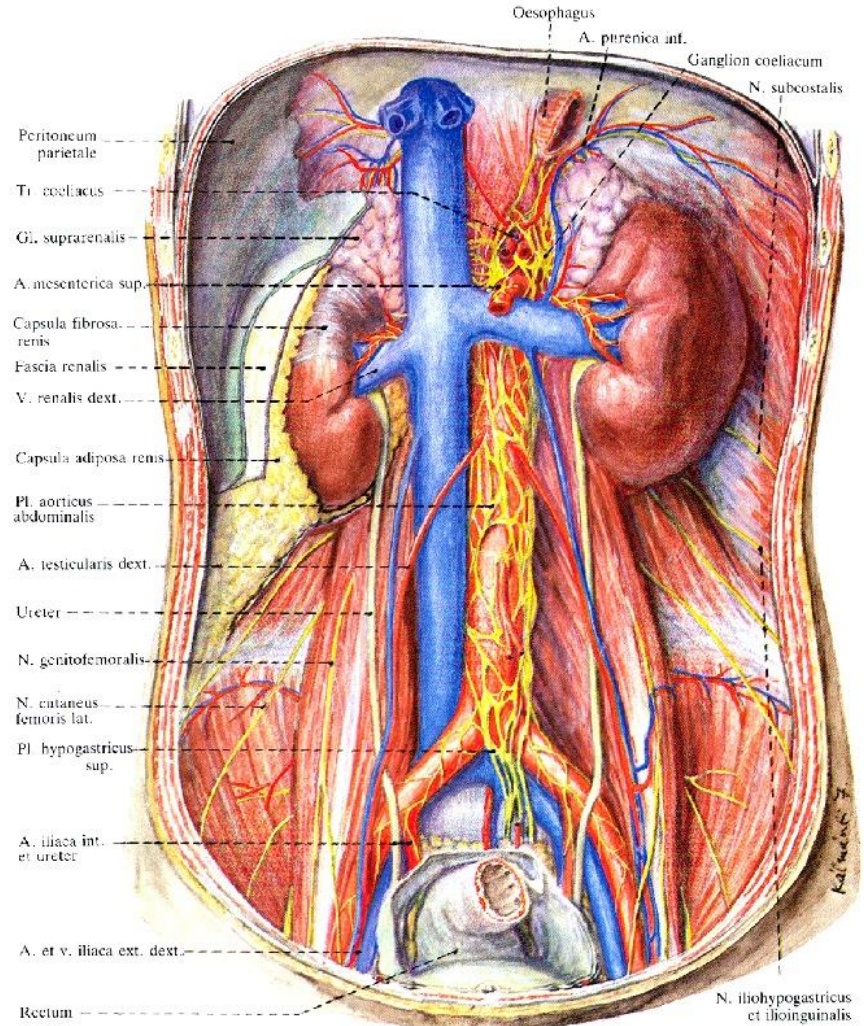
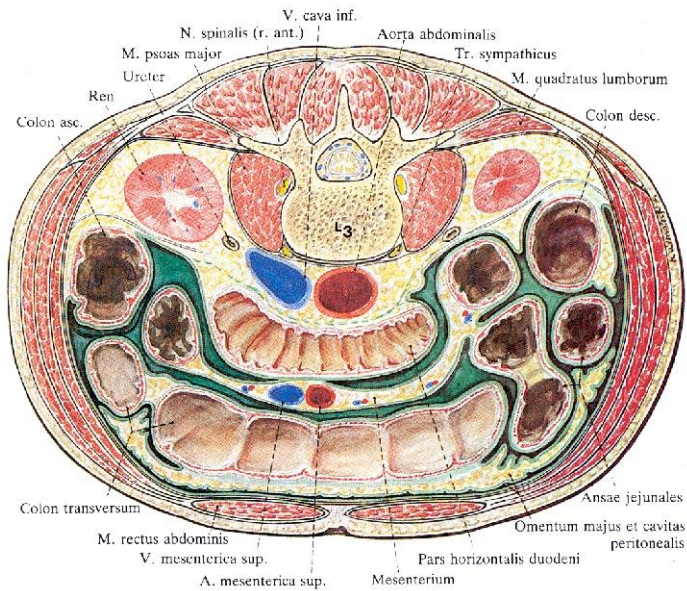
- Praeperitonealis
- Retroperitonealis
- (Secunder módon retroperitonealis (pancreas, duodenum))
- Infraperitonealis



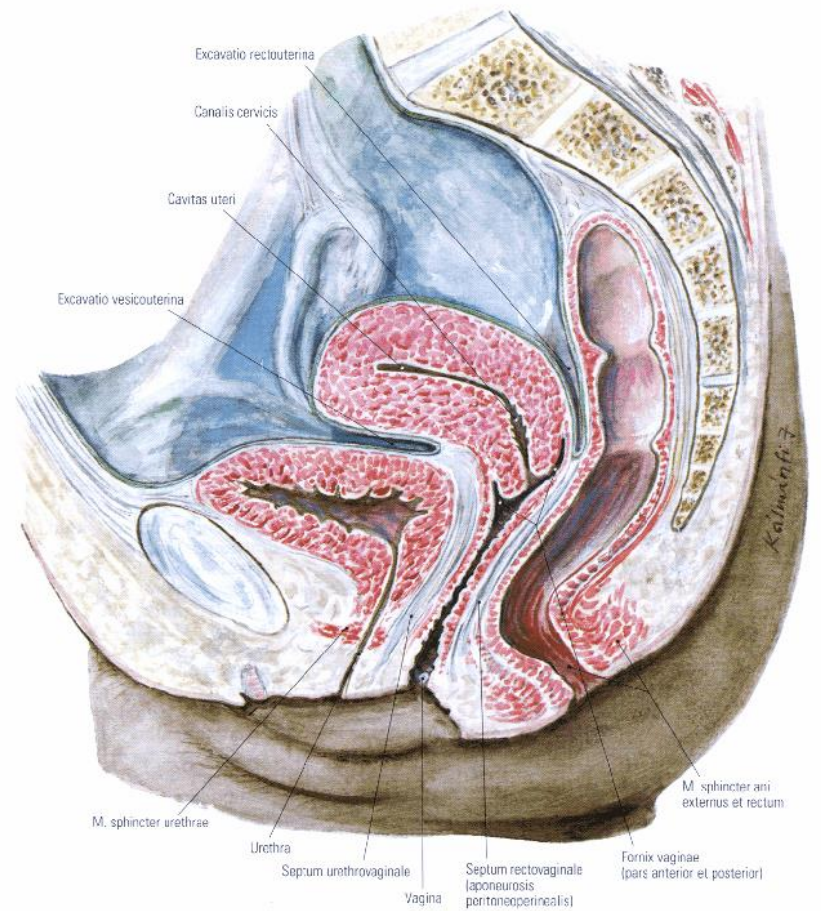
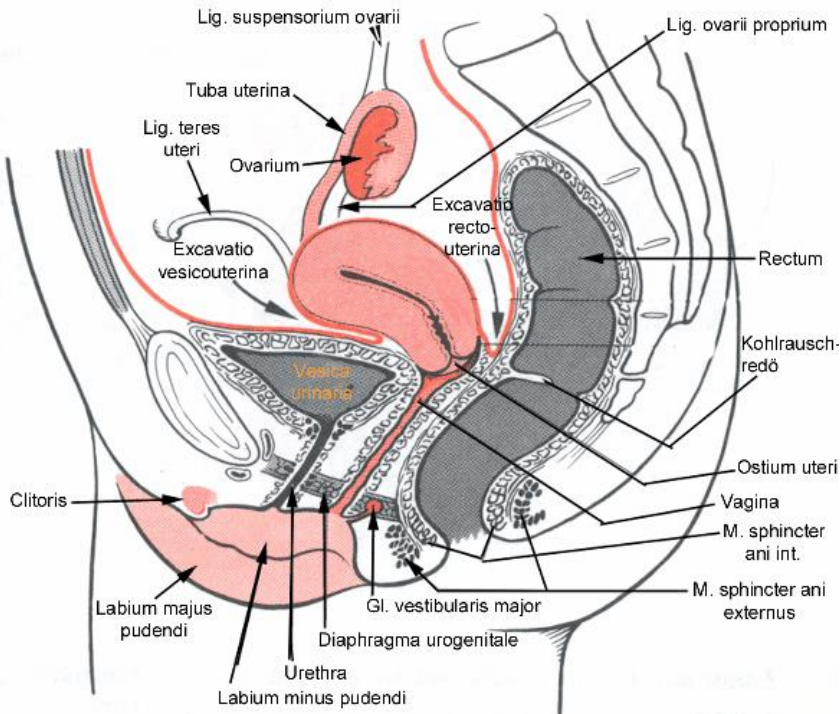
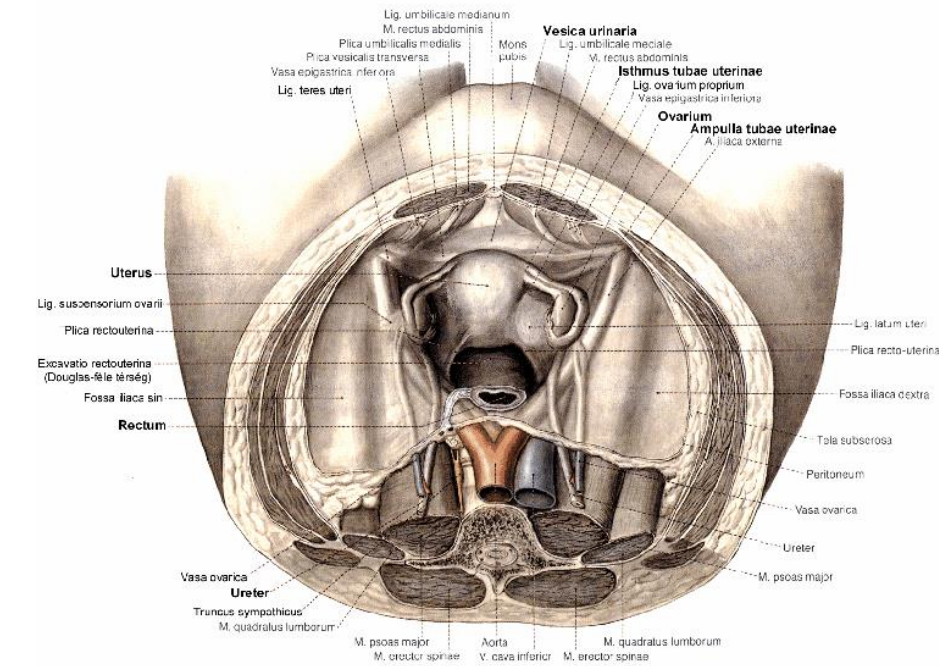
# Praeperitonealis



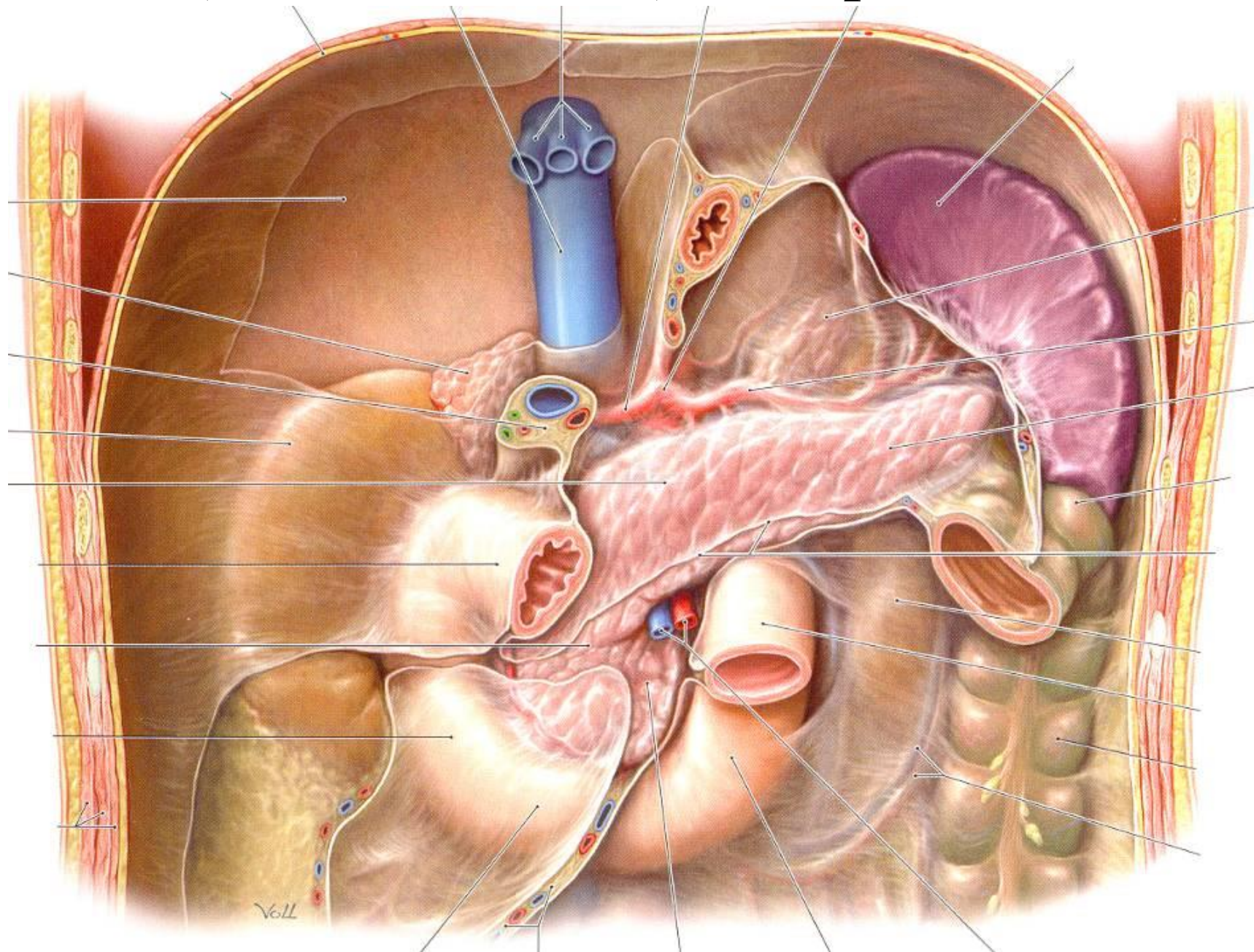
# Retroperitonealis



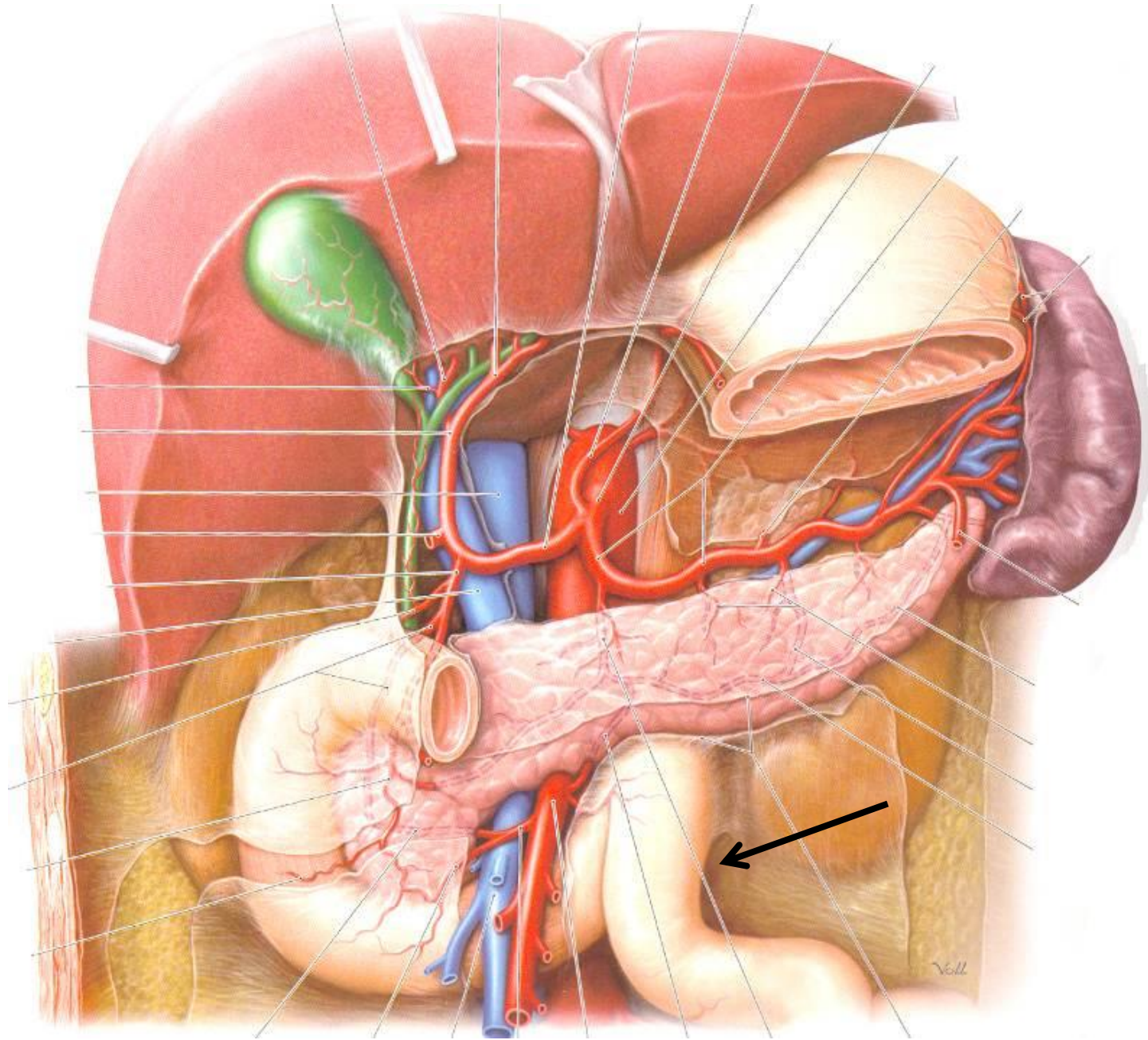
# Infraperitonealis



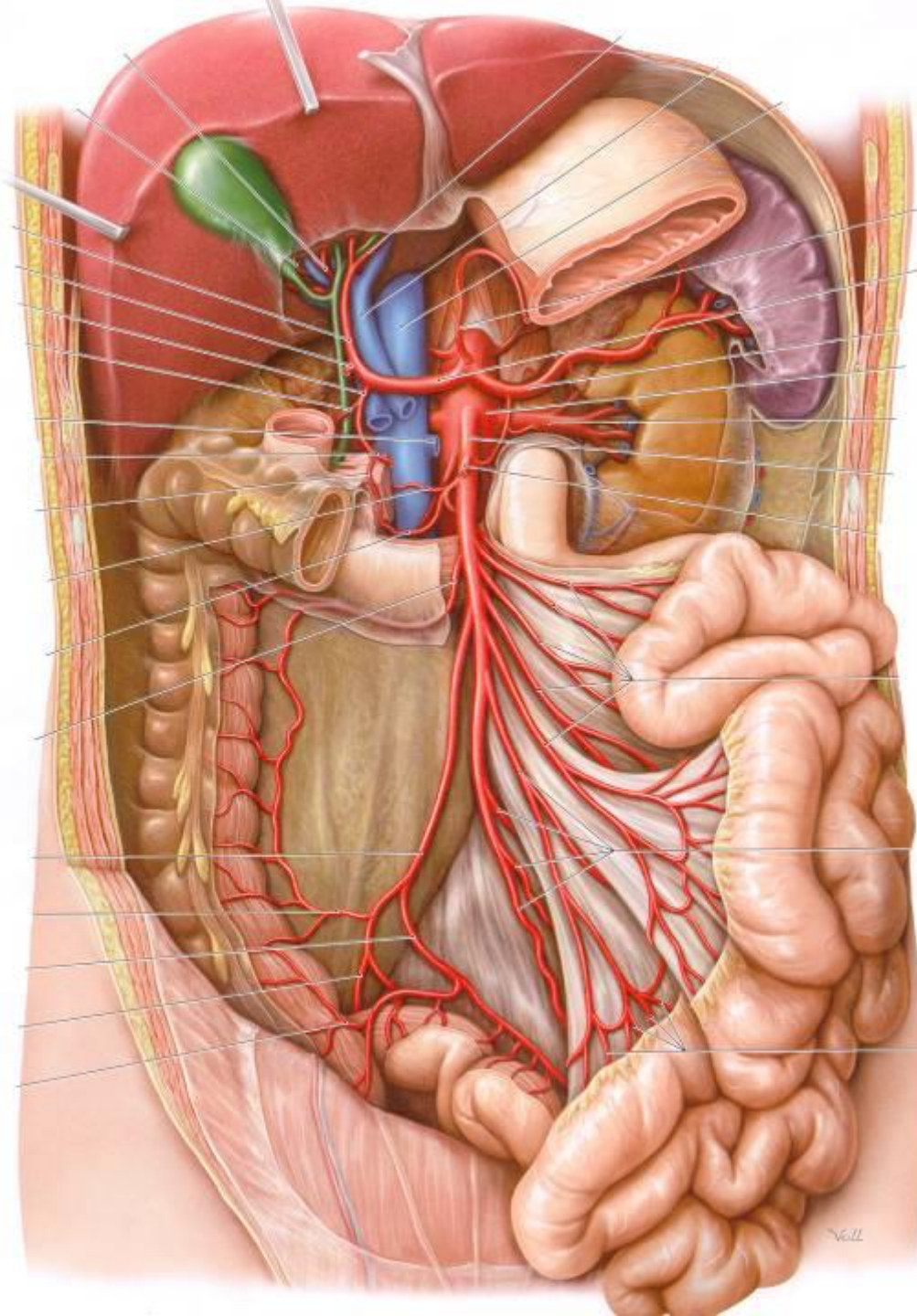
# (Secunder módon) Retroperitonealis

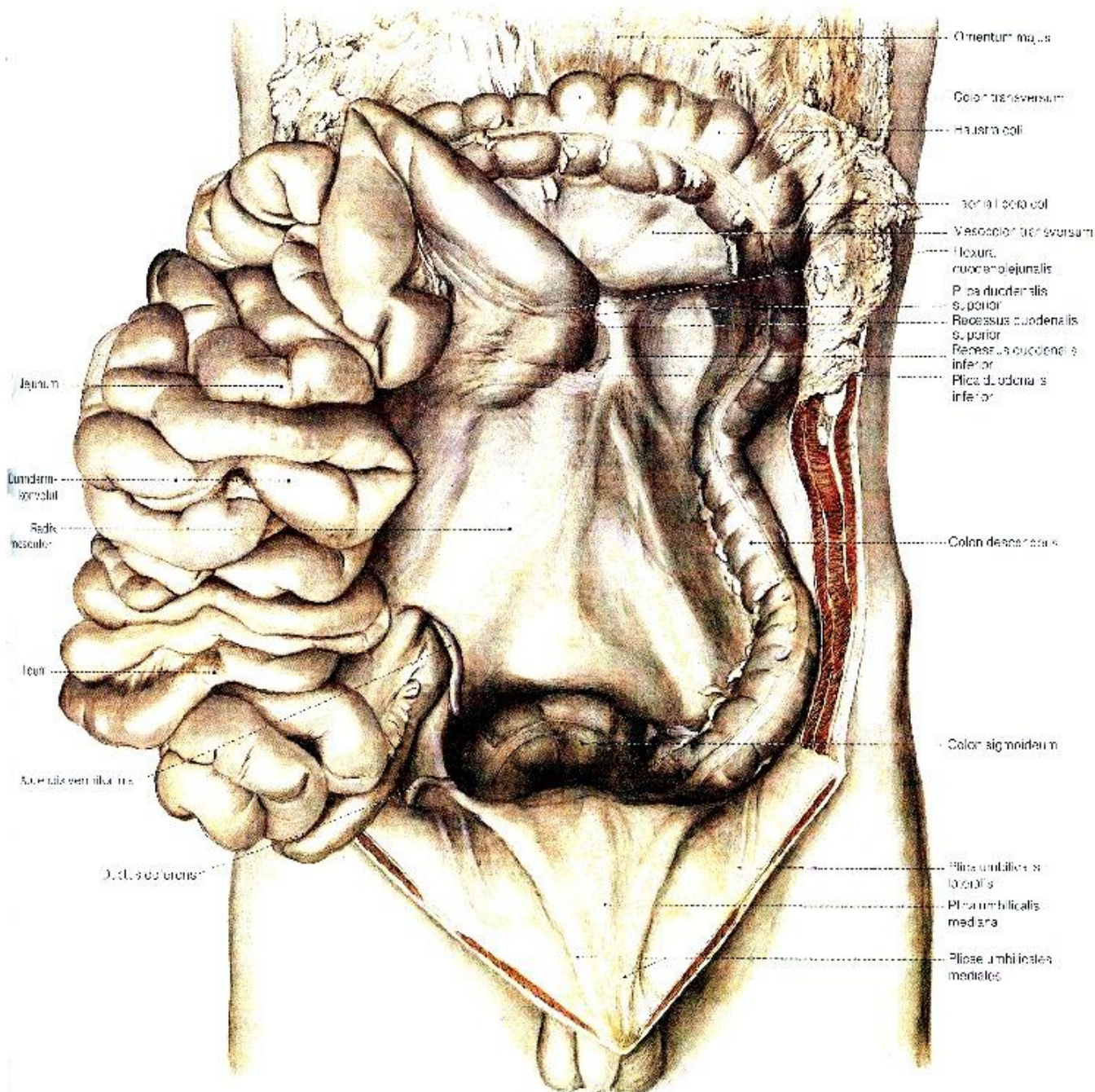


# Intraperitonealis









Omentum majus

Colon transversum

Haustra coli

Flexura coli

Vesicula transversum

Flexura duodenojejunalis

Plicae duodenalis superior

Recessus duodenalis superior

Recessus duodenalis inferior

Plicae duodenalis inferior

Jejunum

Duodenum superior

Radix mesocoli

Ileon

Sacculus venosus

D. D. superior

Colon descendens

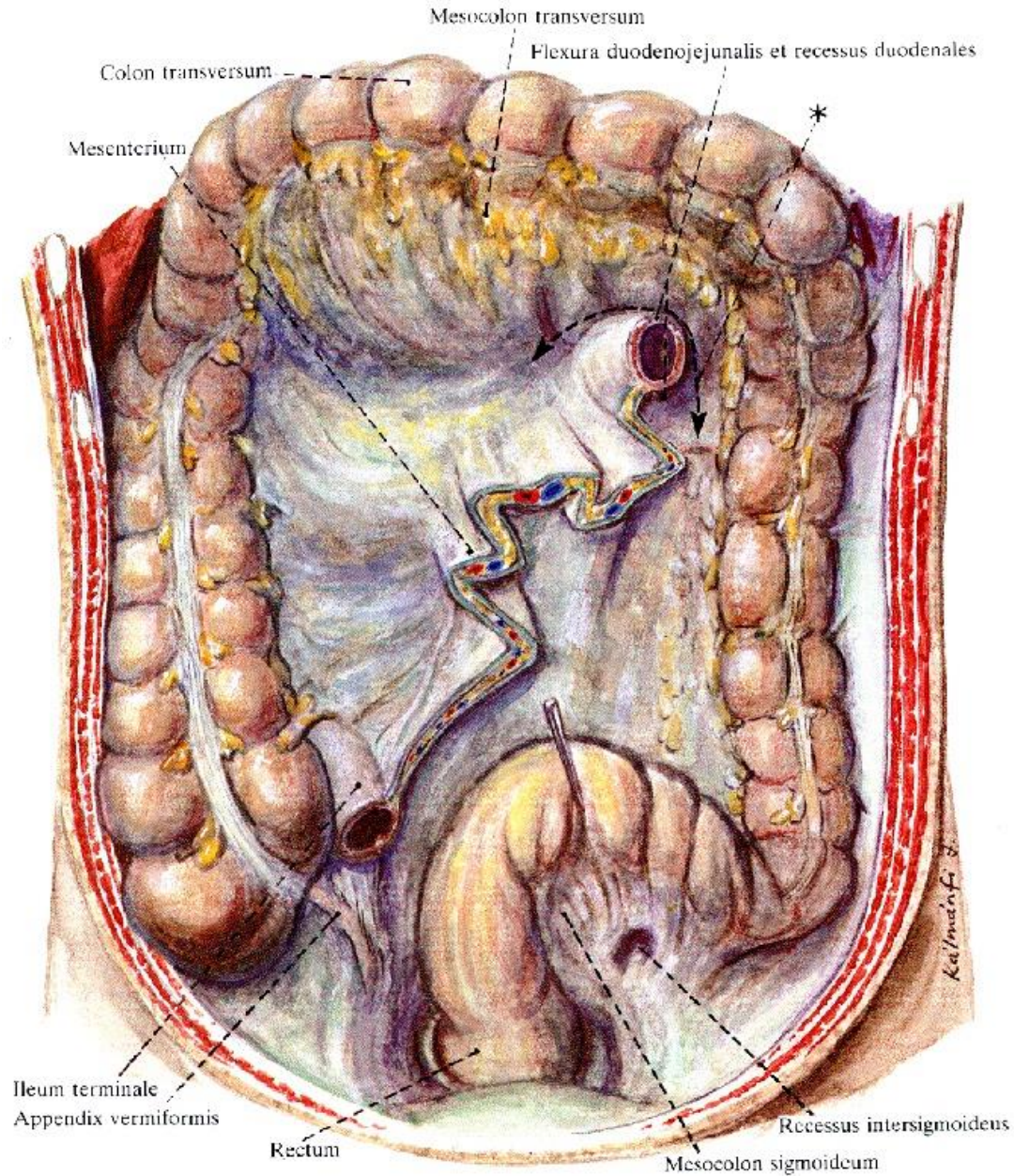
Colon sigmoideum

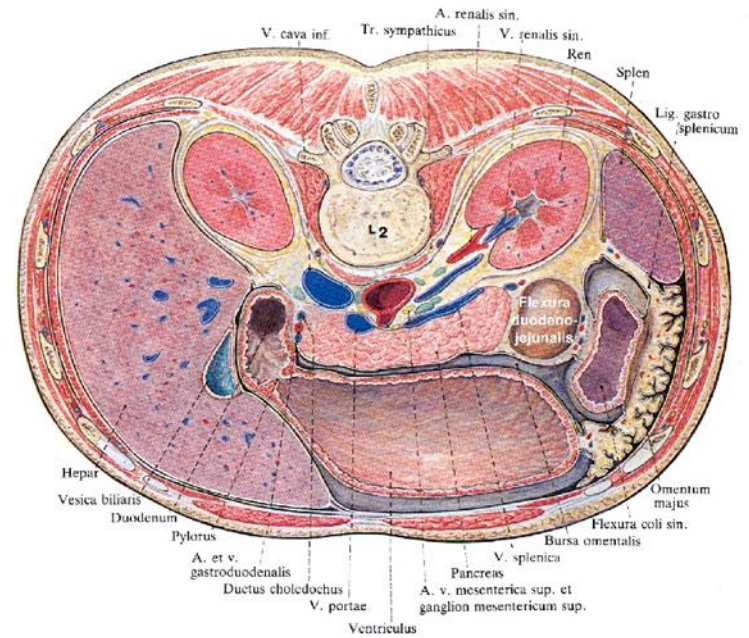
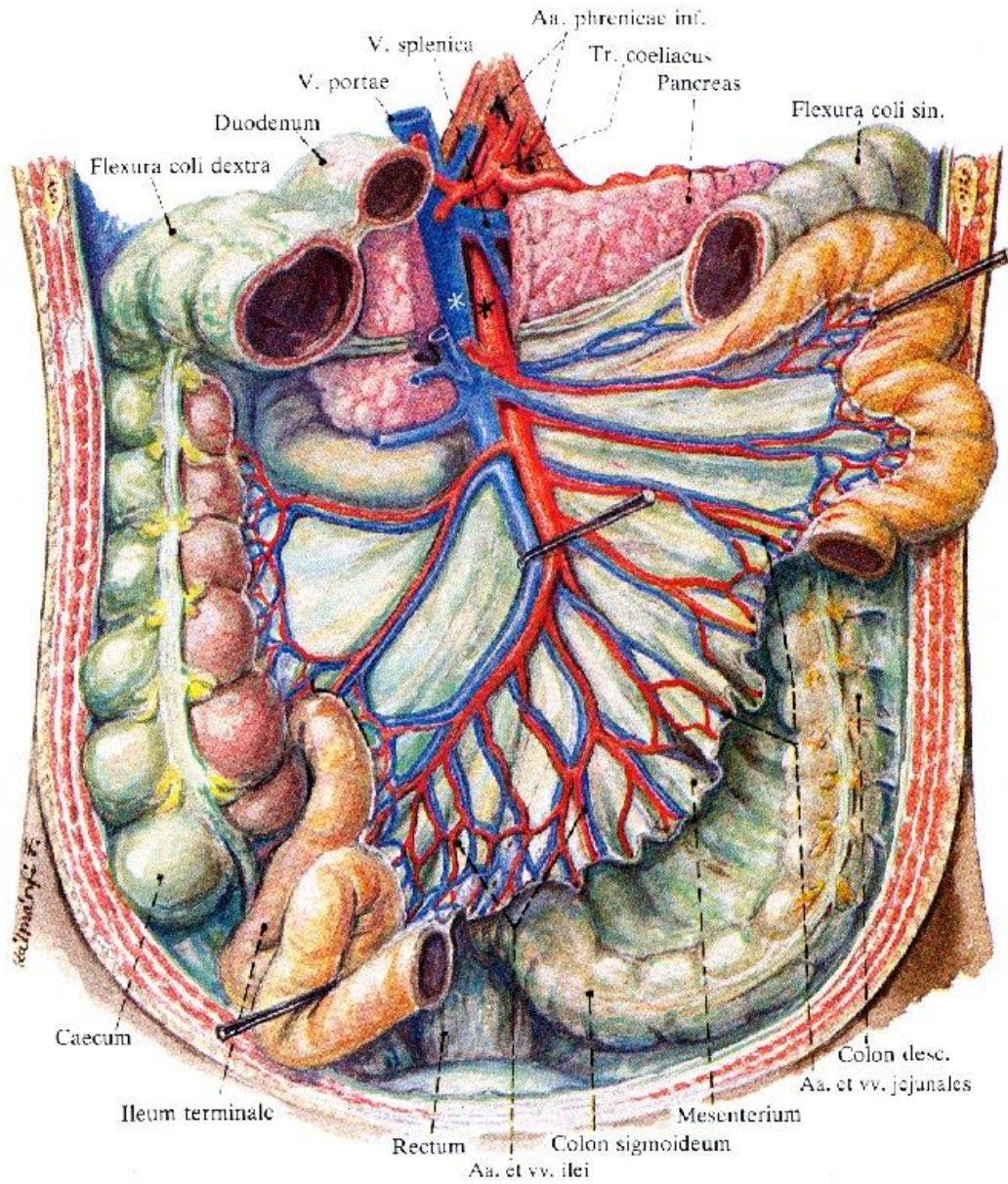
Plicae umbilicales laterales

Plicae umbilicales mediana

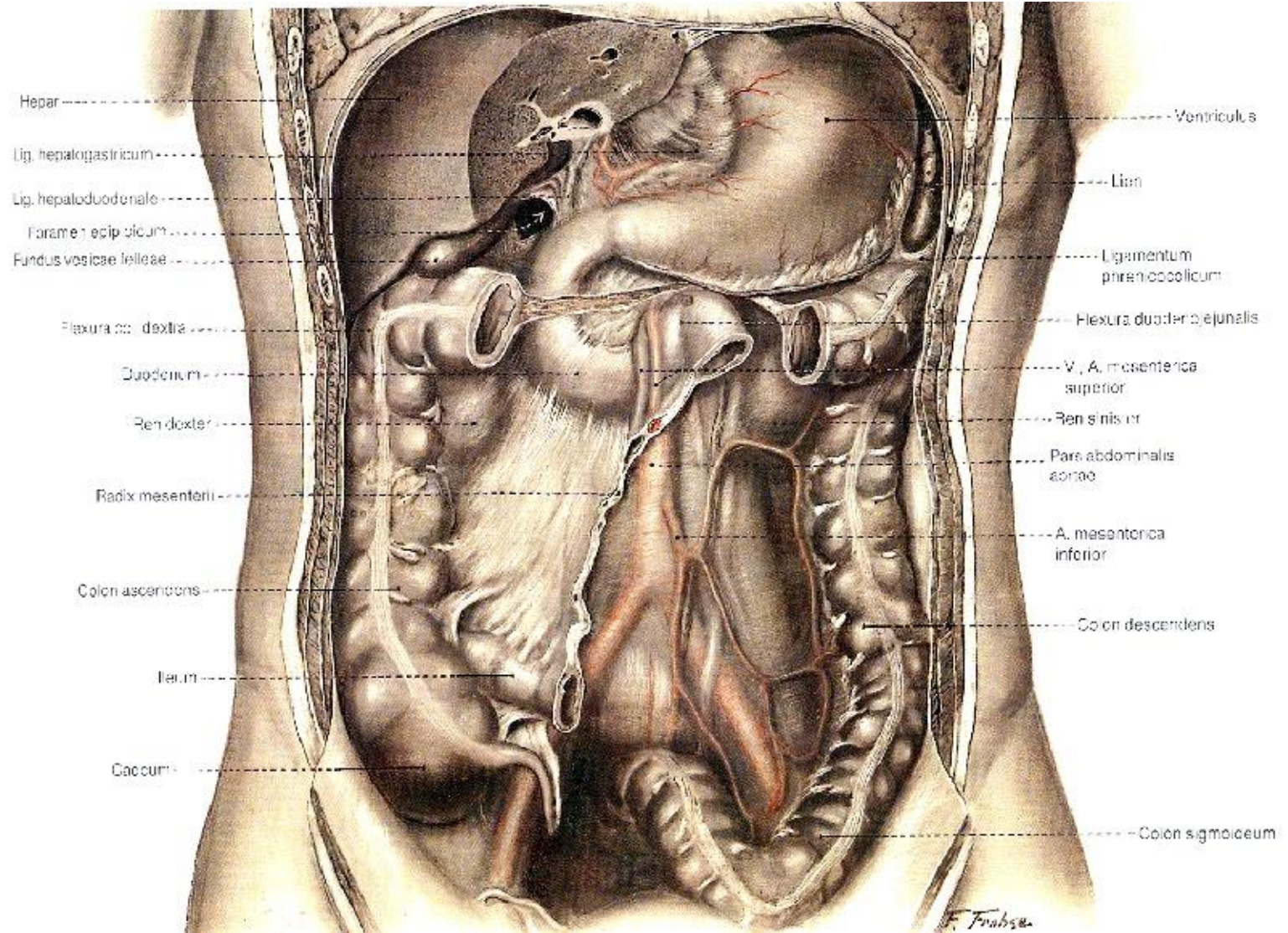
Plicae umbilicales mediales

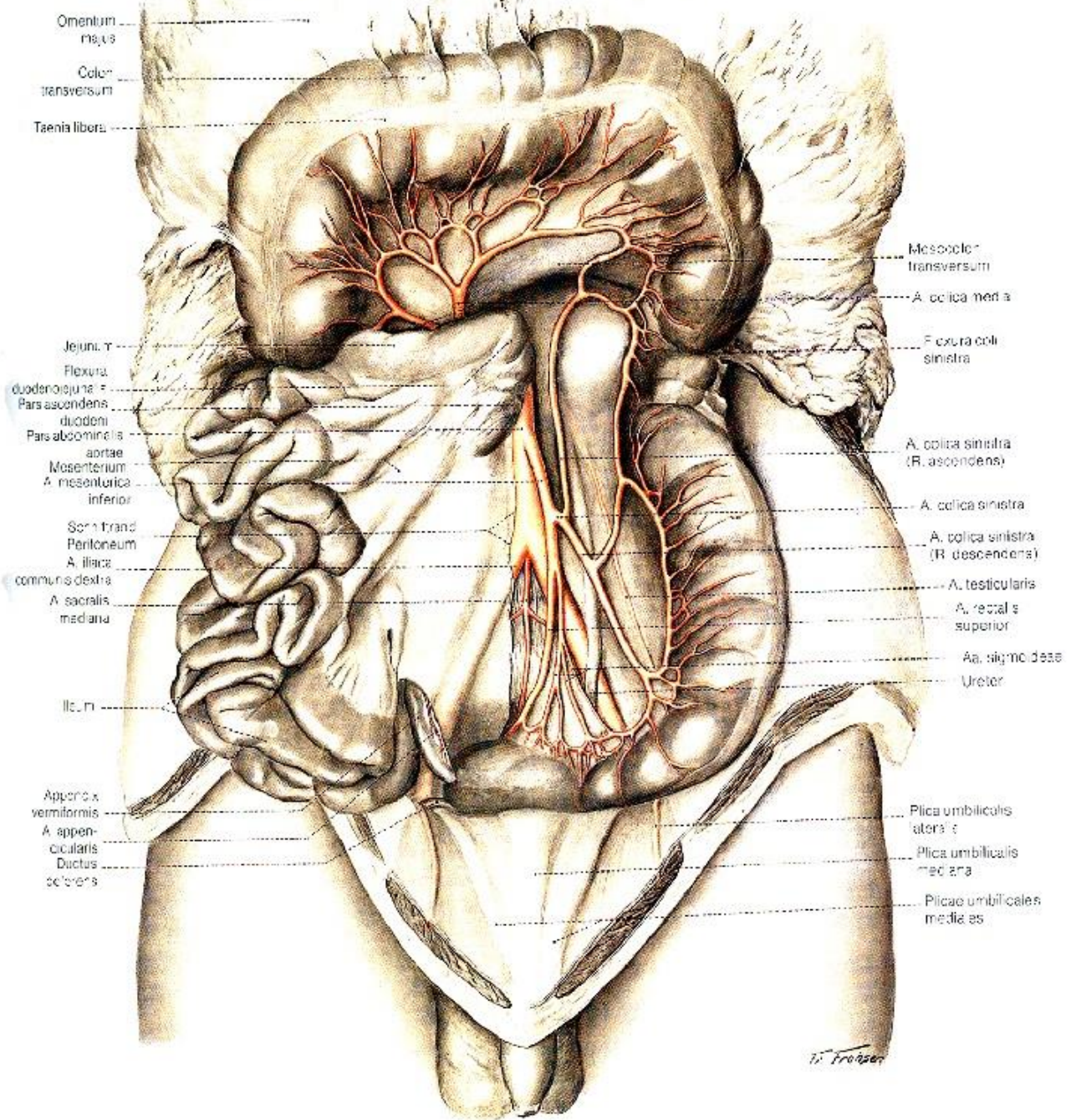
# Mesenterium (radix mesenterii)





# Mesocolon transversum, mesosigmoideum



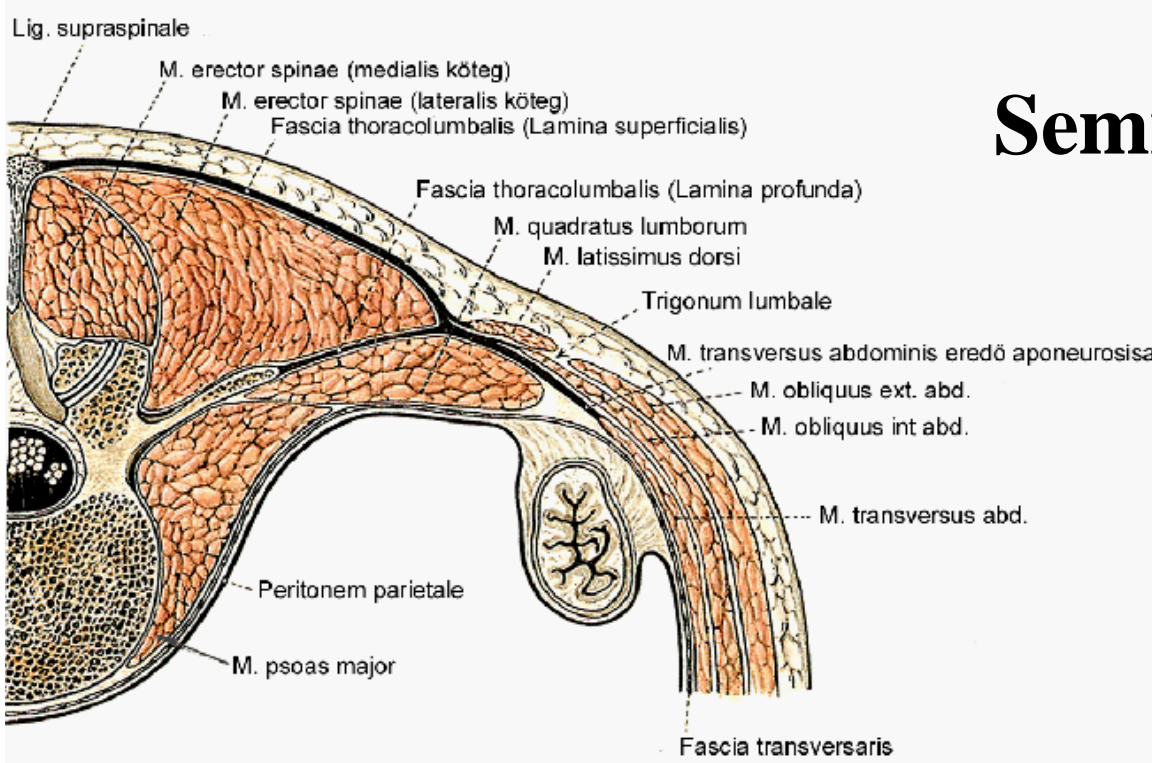


Omentum minus  
 Colon transversum  
 Taenia libera  
 Jejunum  
 Flexura duodenojejunalis  
 Pars ascendens duodeni  
 Pars abdominalis aortae  
 Mesenterium A. mesenterica inferior  
 Semitransversarium Peritoneum  
 A. iliaca communis dextra  
 A. sacralis mediana  
 Ileum  
 Appendix vermiformis  
 A. appendicularis  
 Ductus biliaris

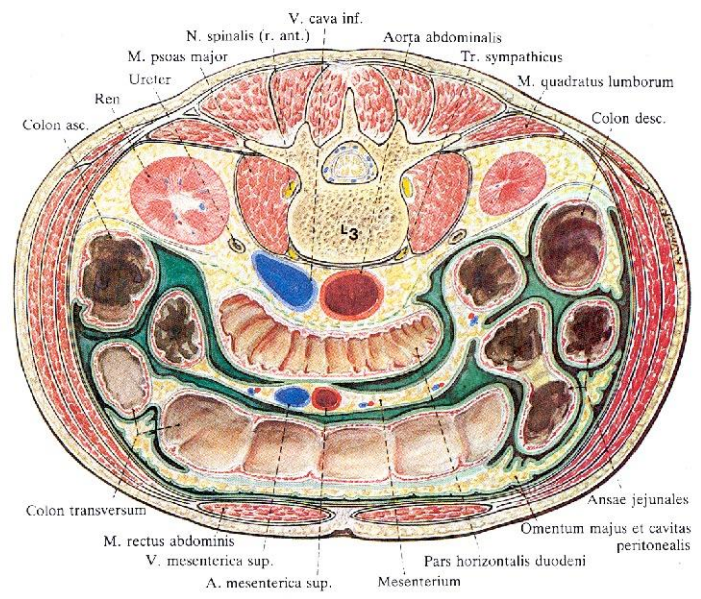
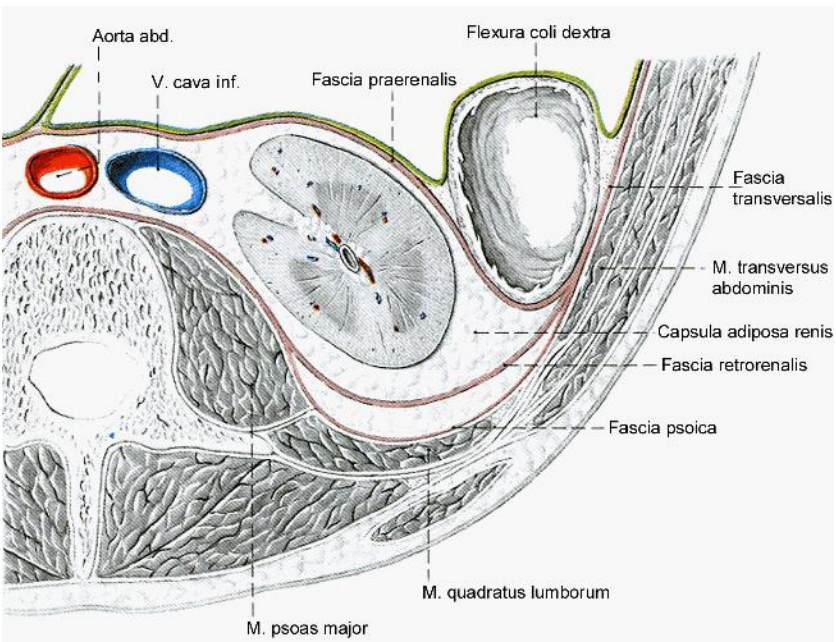
Mesocolon transversum  
 A. colica media  
 Flexura coli sinistra  
 A. colica sinistra (R. ascendens)  
 A. colica sinistra  
 A. colica sinistra (R. descendens)  
 A. testicularis  
 A. rectalis superior  
 Aa. sigmoideae  
 Ureter  
 Plica umbilicalis lateralis  
 Plica umbilicalis mediana  
 Plicae umbilicales mediae

H. Frazer

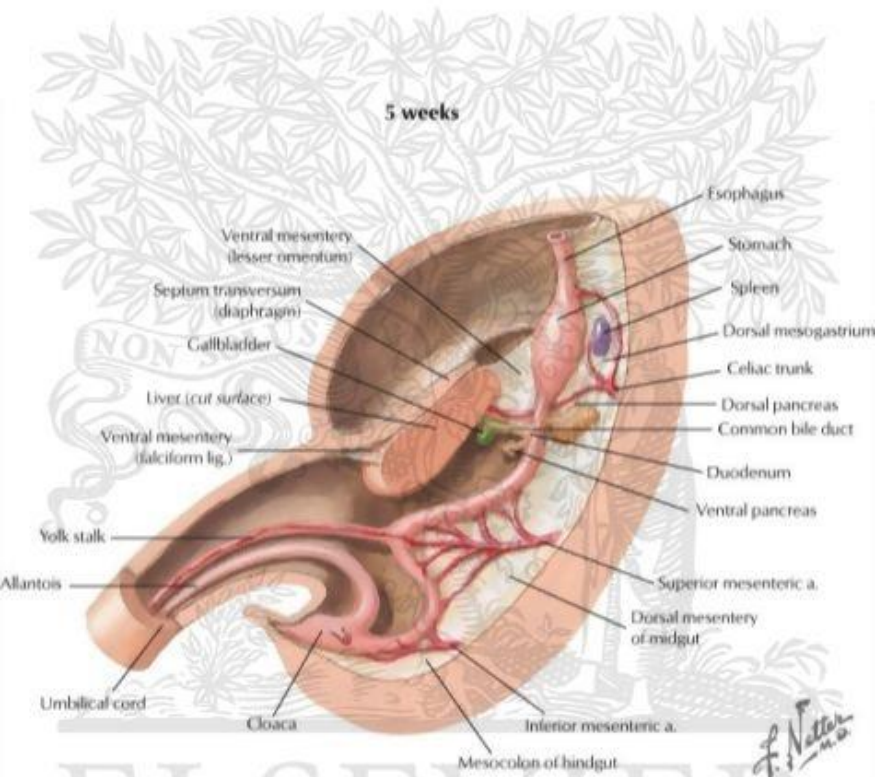
# Semi-intraperitonealis!



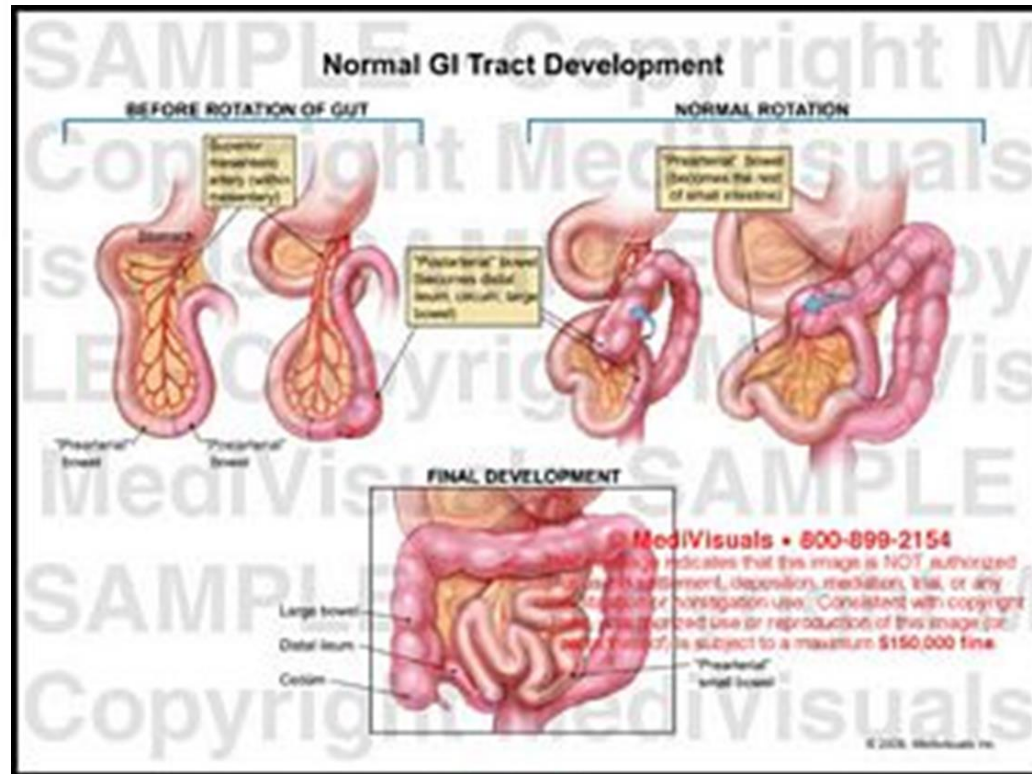
Rectum:  
 - (semi)intra  
 -retro  
 -infra



# Fejlődés

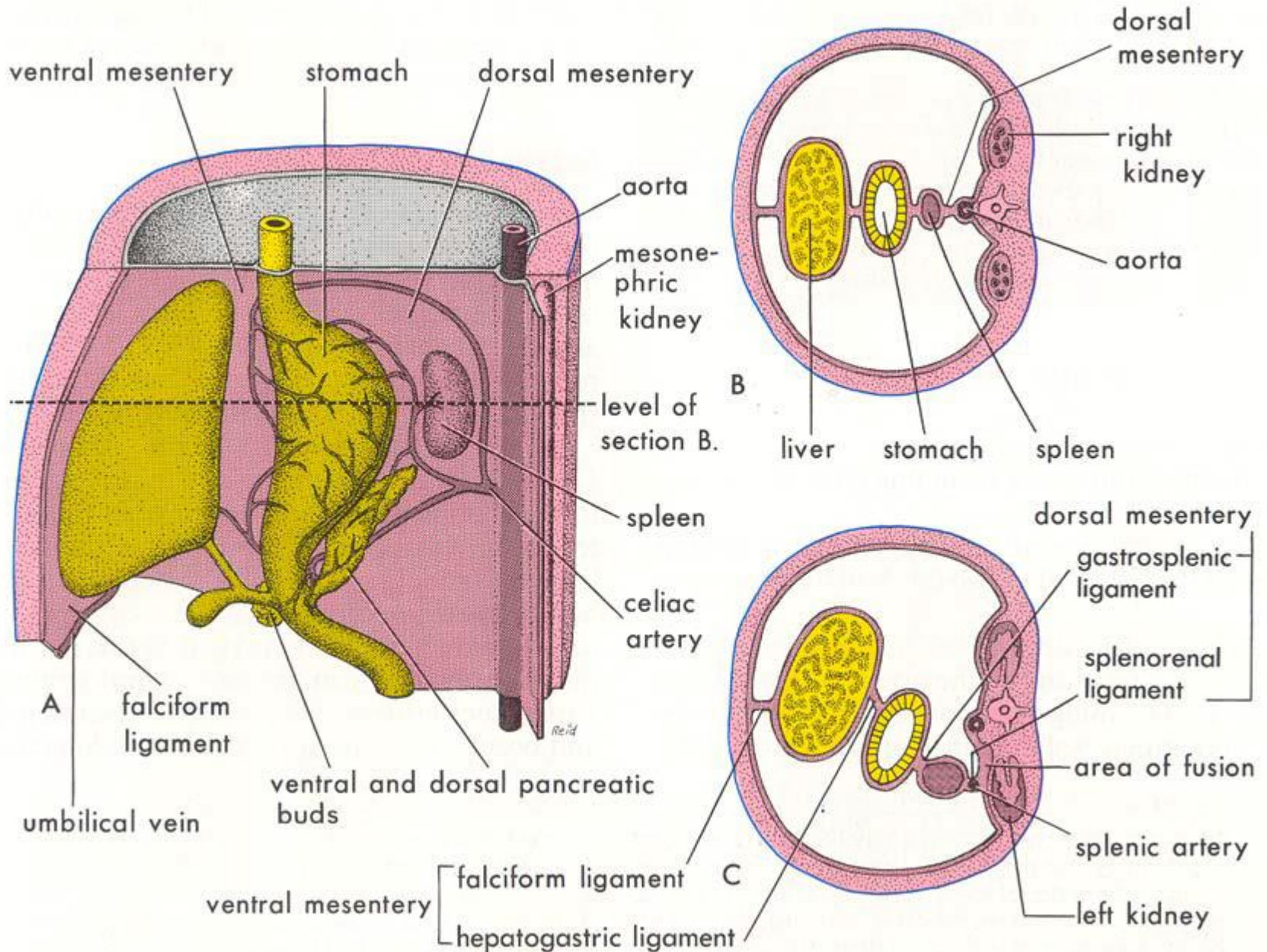


**Mesenterium ventrale**  
**Mesenterium dorsale**

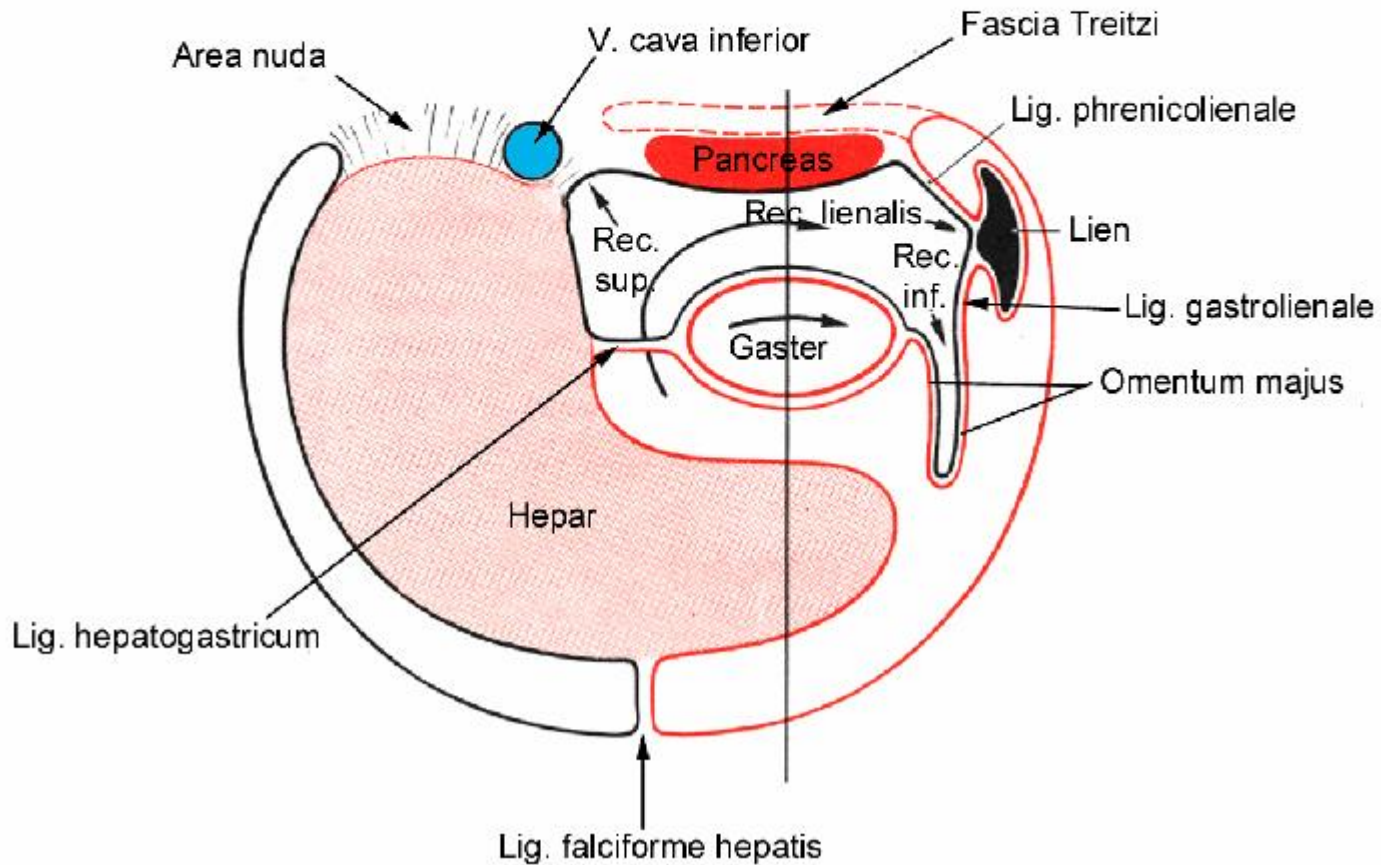
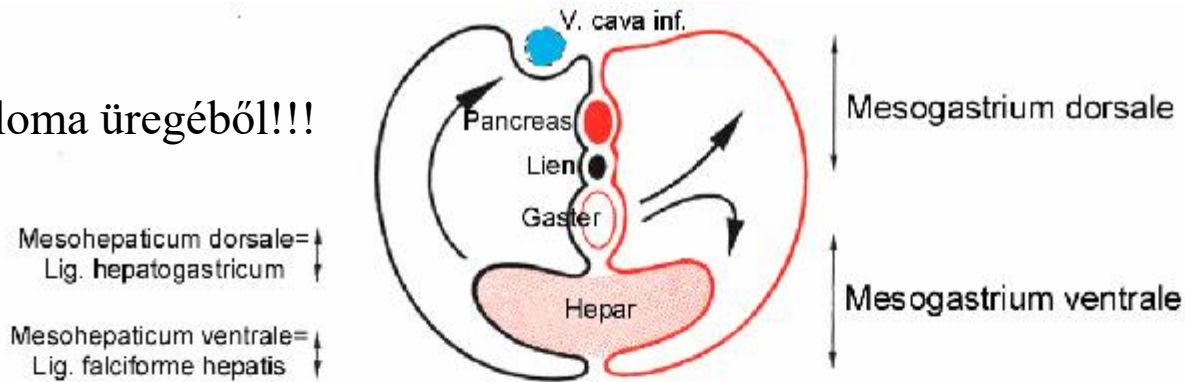


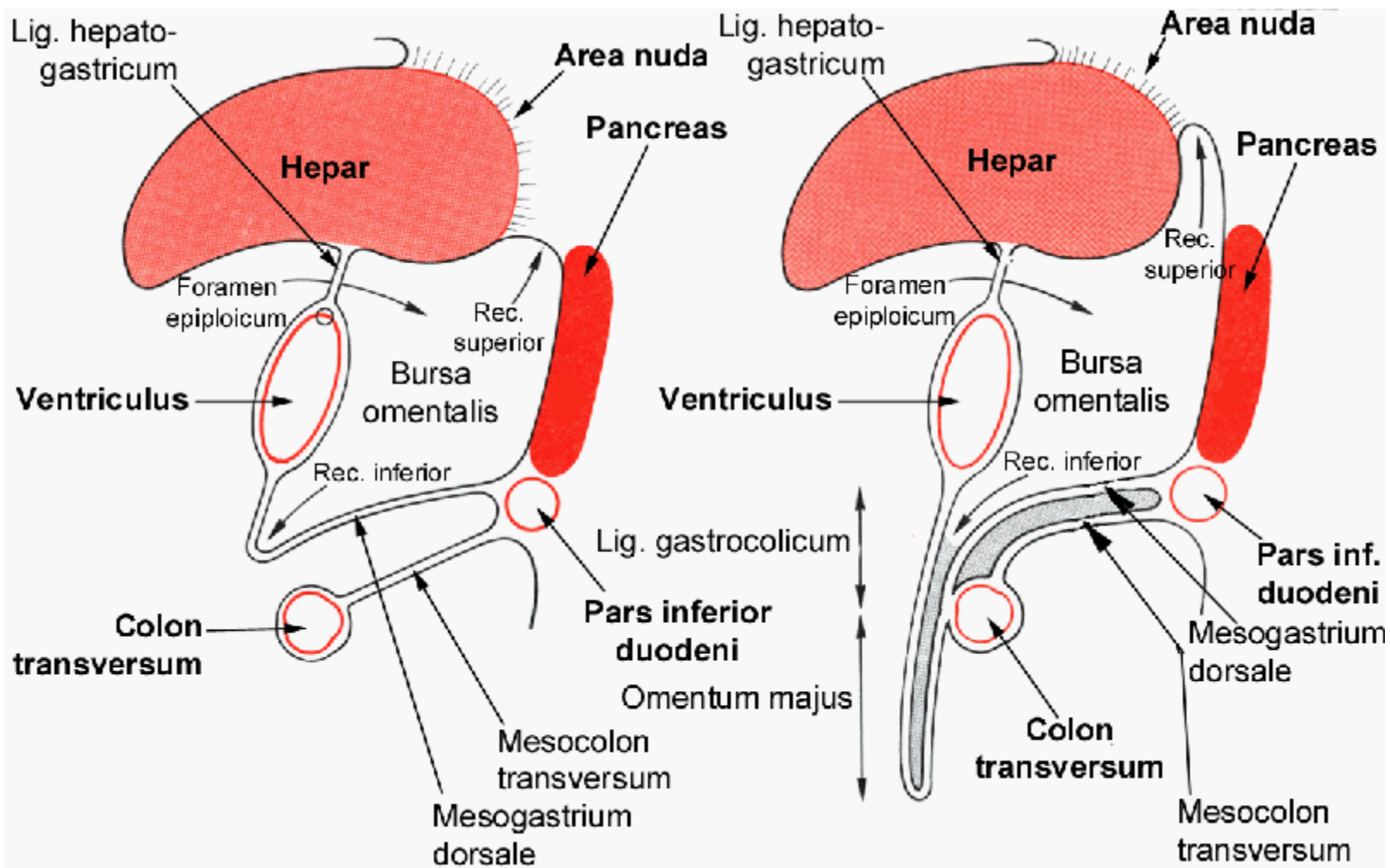


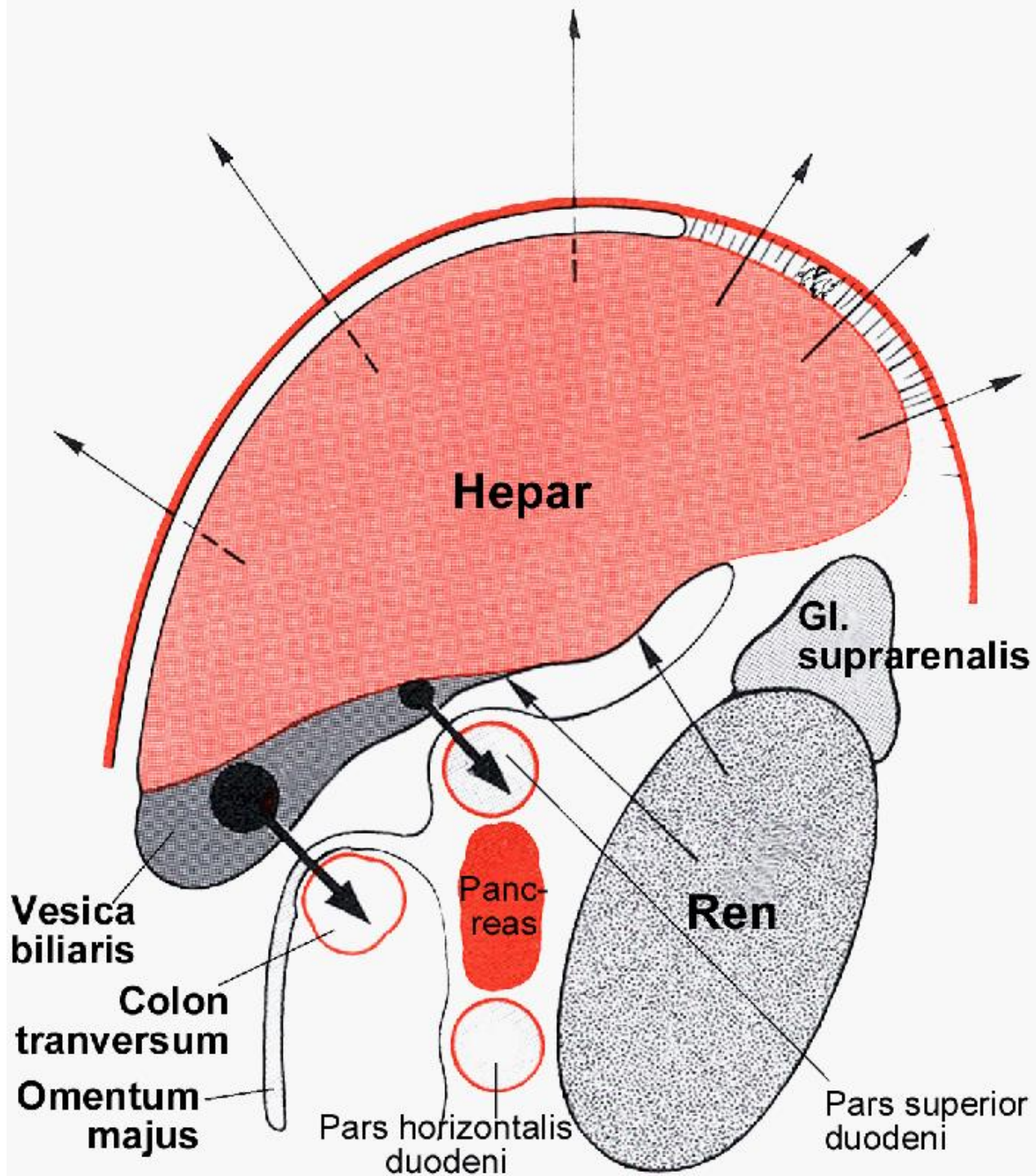
# Az eseményeket követve megmagyarázhatjuk a kettőzetek fejlődéstani eredetét



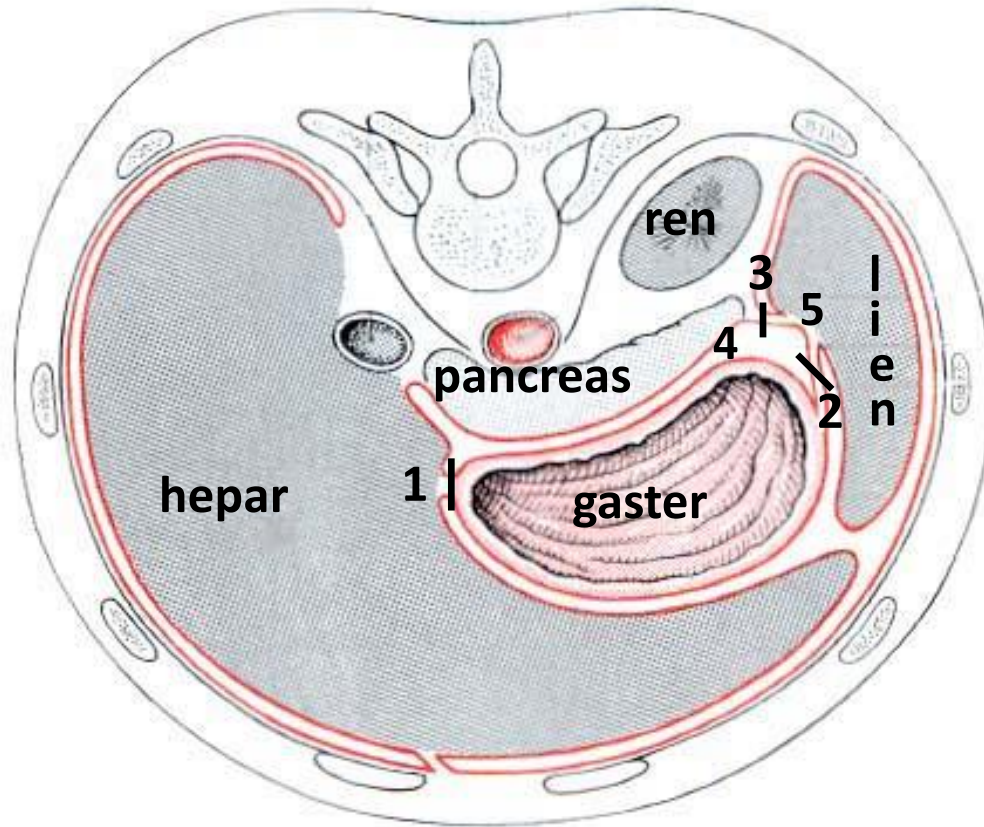
Jobb ceoloma üregéből!!!





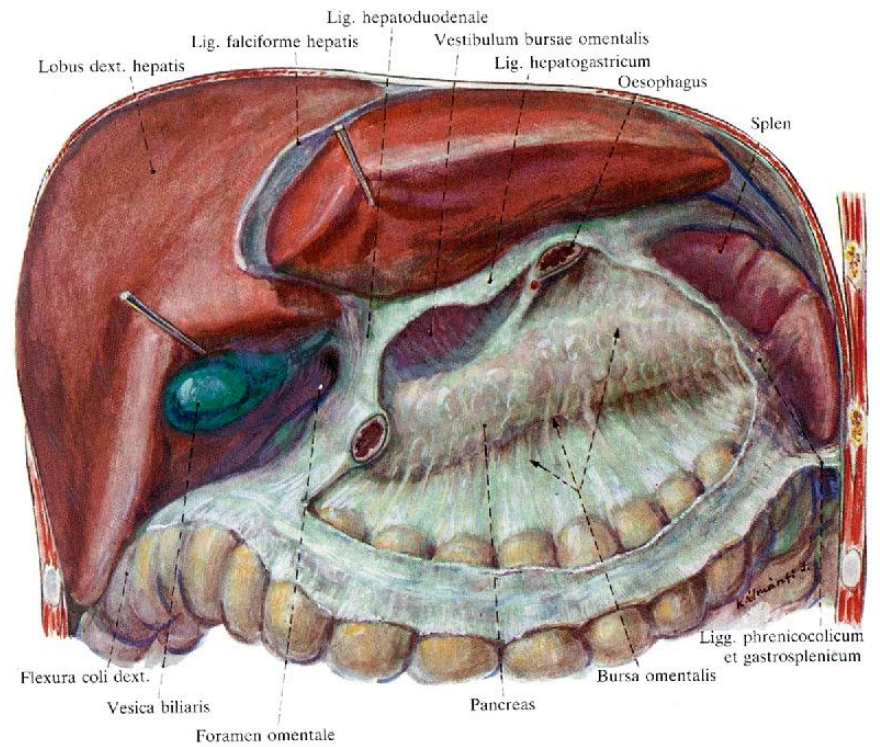
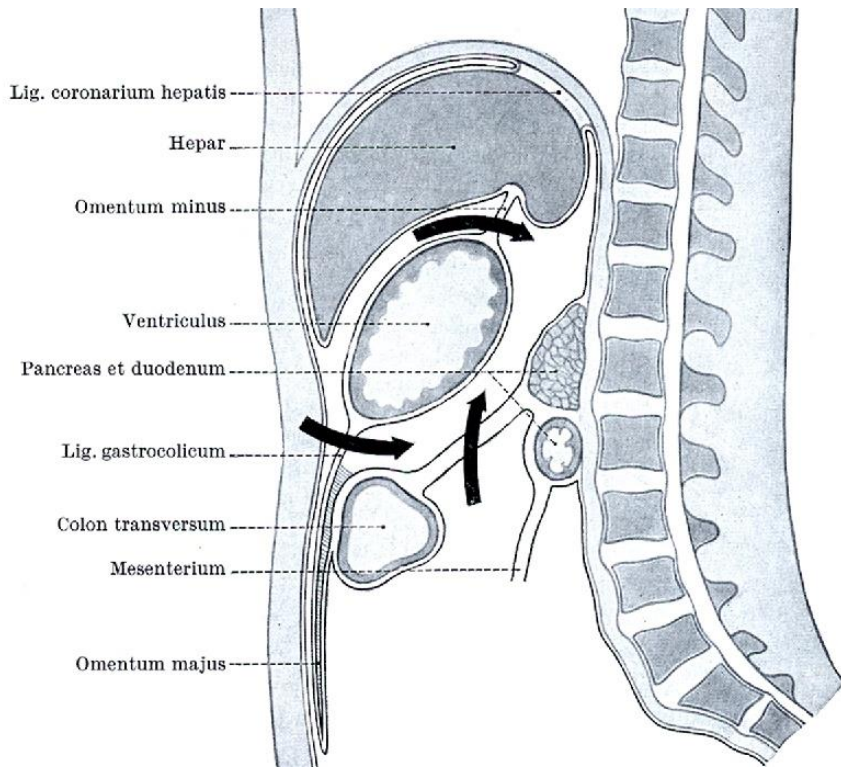


# Bursa omentalis



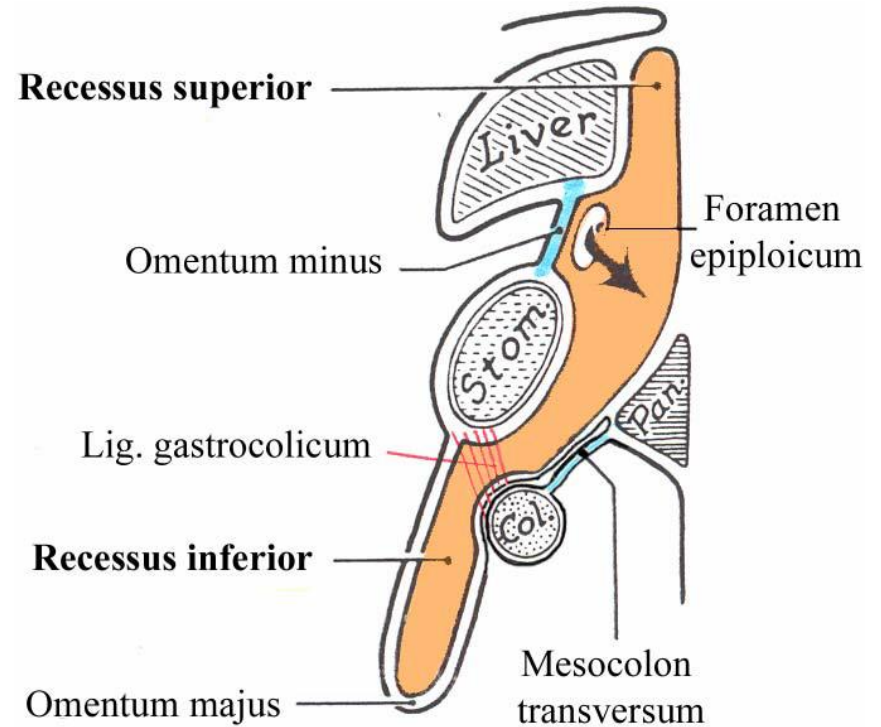
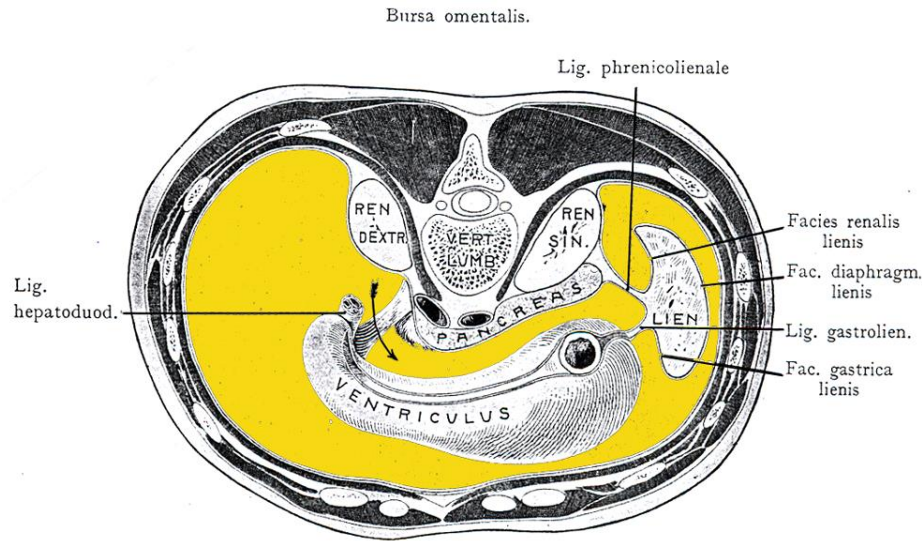
1. lig. hepatogastricum
2. Lig. gastrolienale
3. Lig. phrenicolienale
4. BURSA OMENTALIS
5. Recessus lienalis  
bursae omentalis

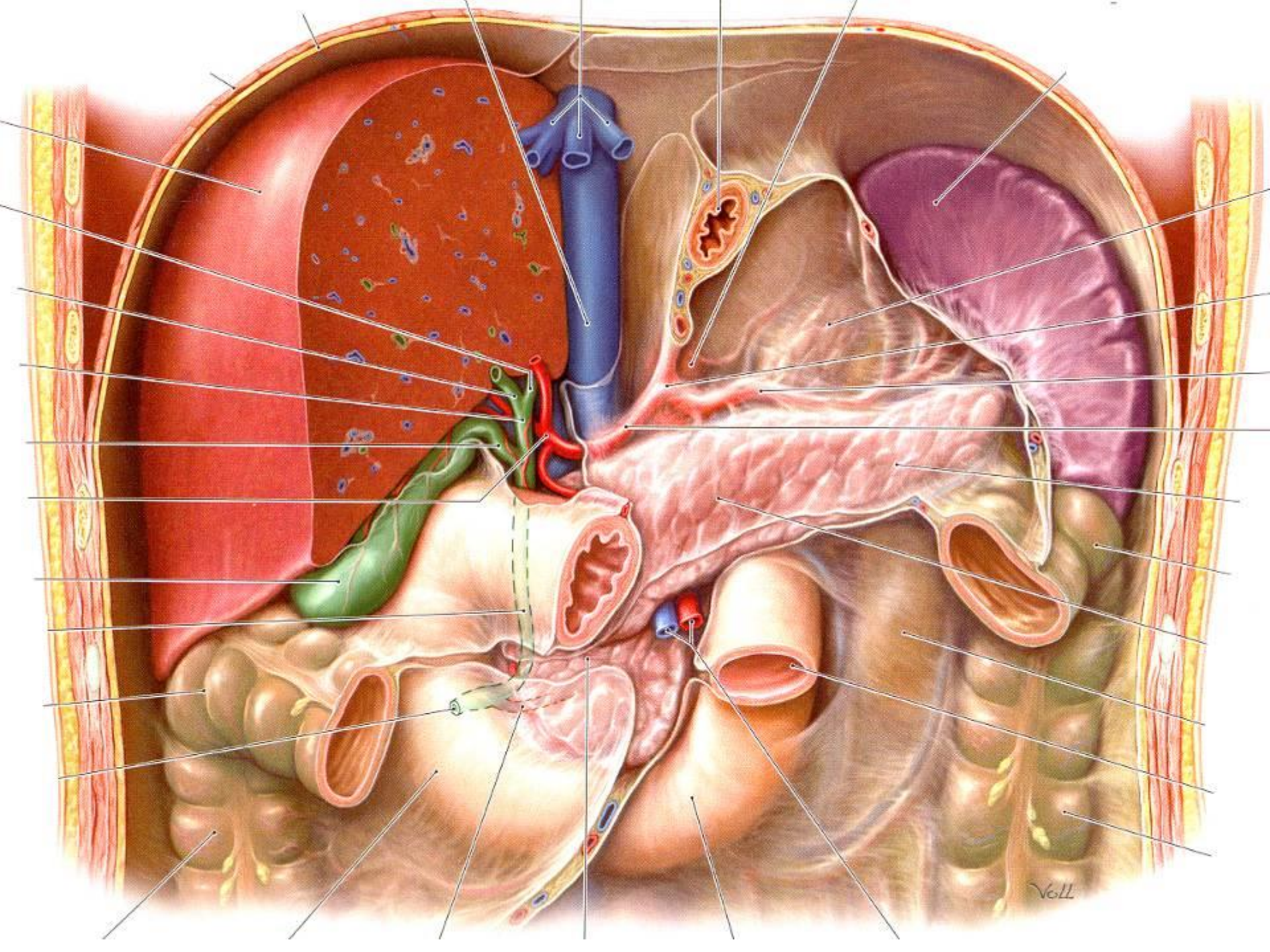
# Bursa omentalis



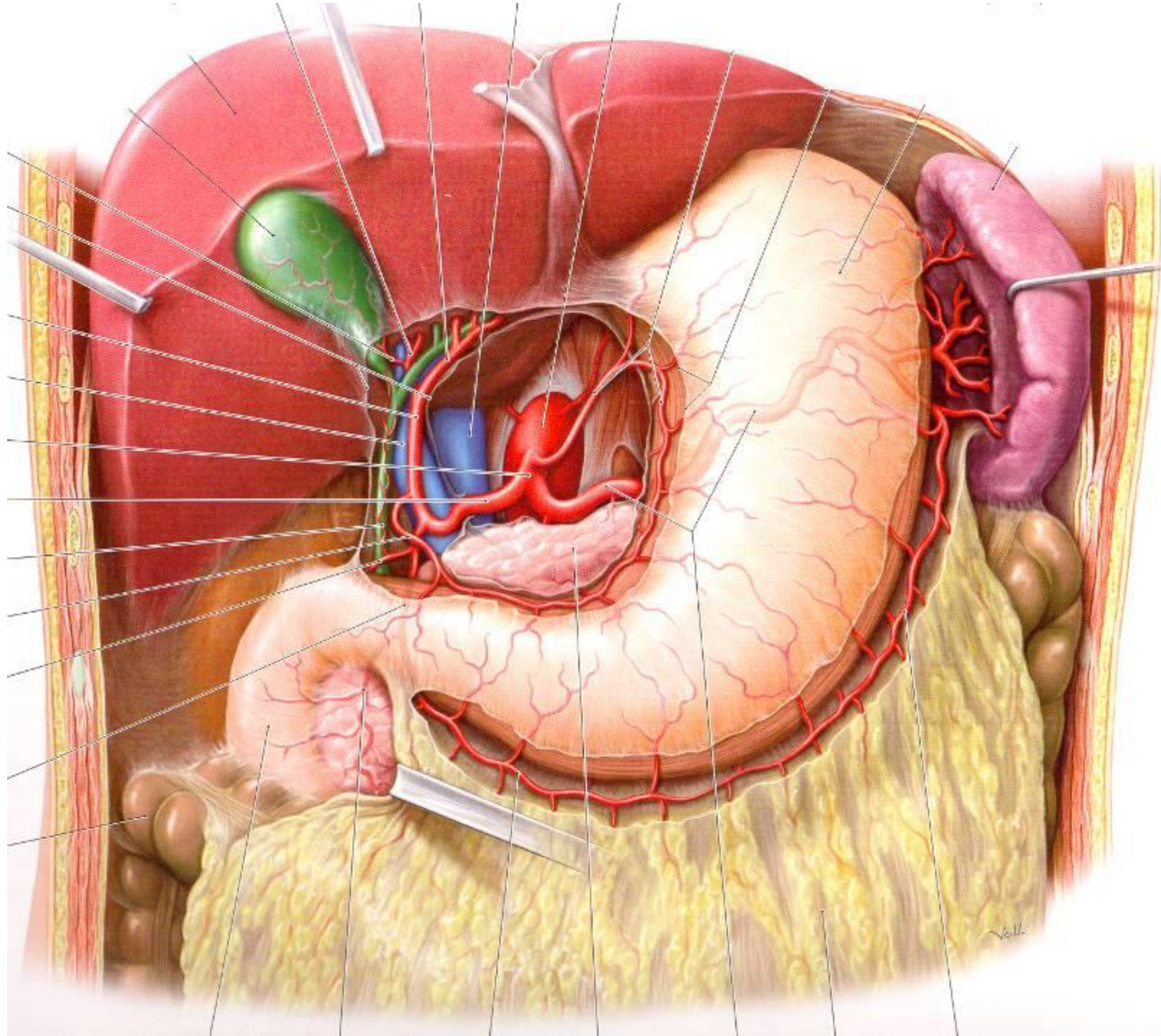
# Bursa omentalis:

- Foramen epiploicum (Winslow) határai!!!
- Vestibulum
- Plica gastropancreatica
- Cavum proprium
- Recessus sup.
- Recessus inf.
- Recessus lienalis

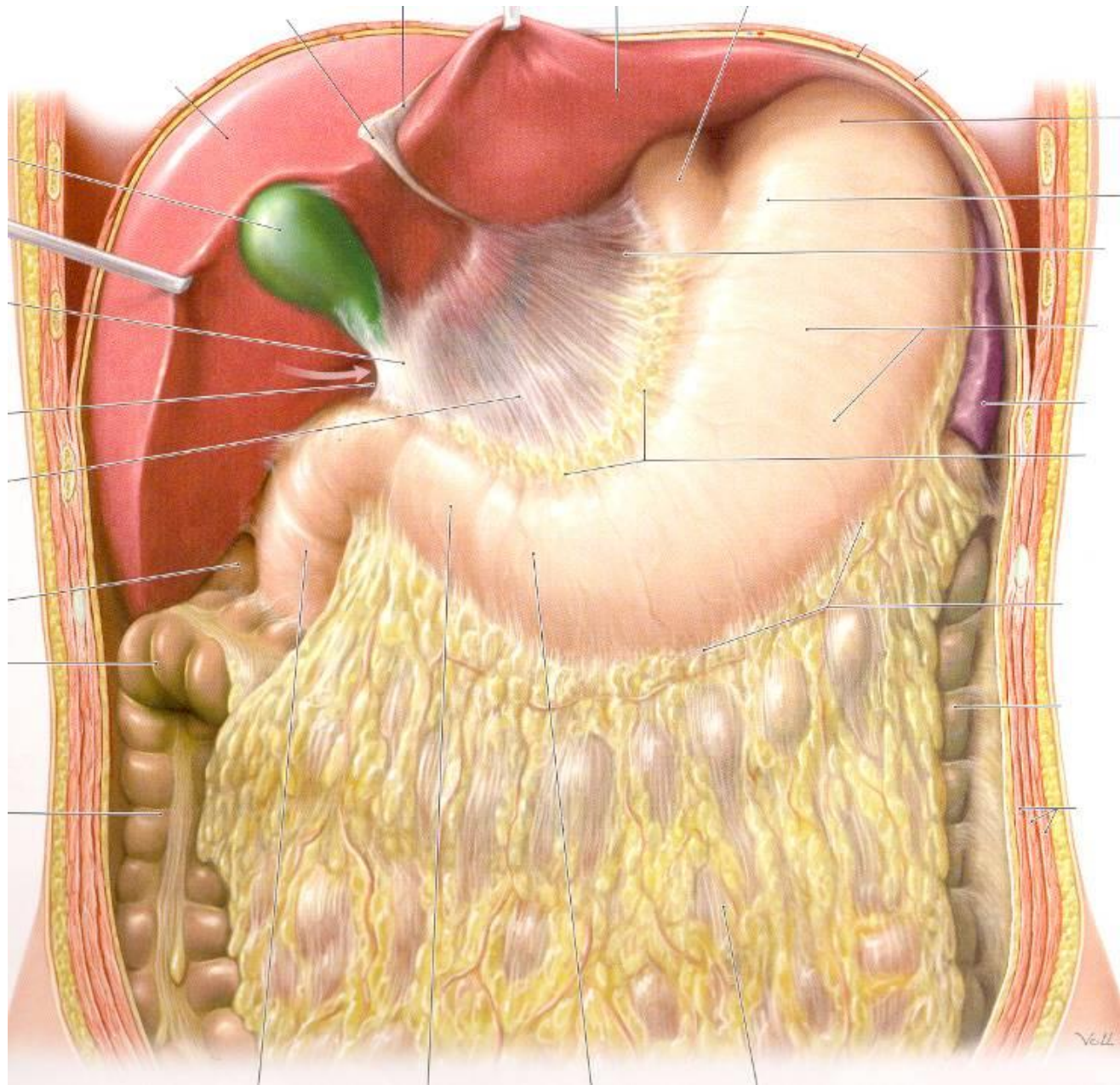


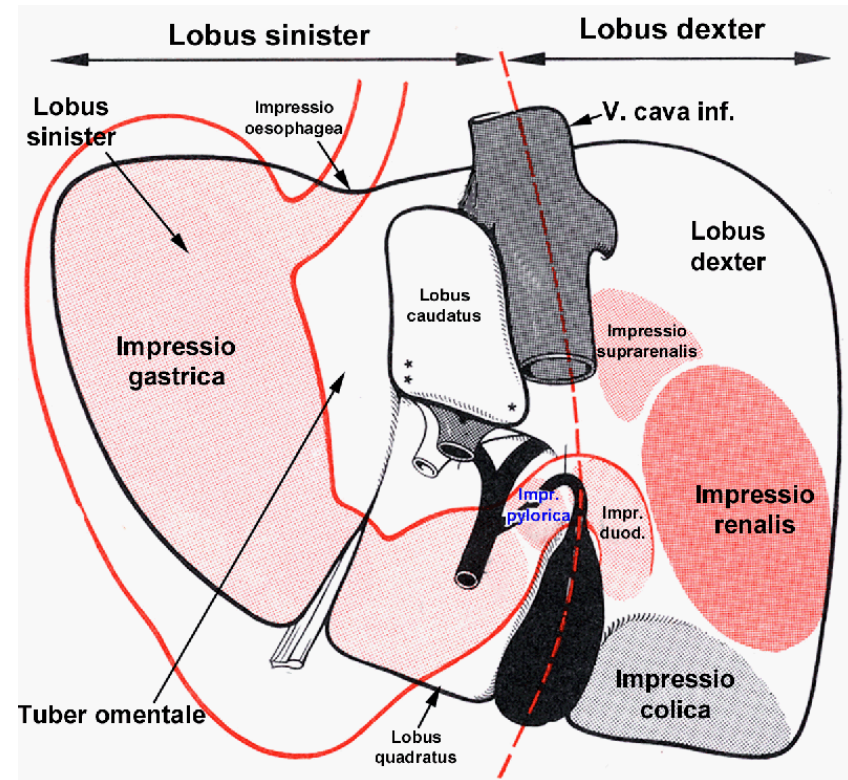
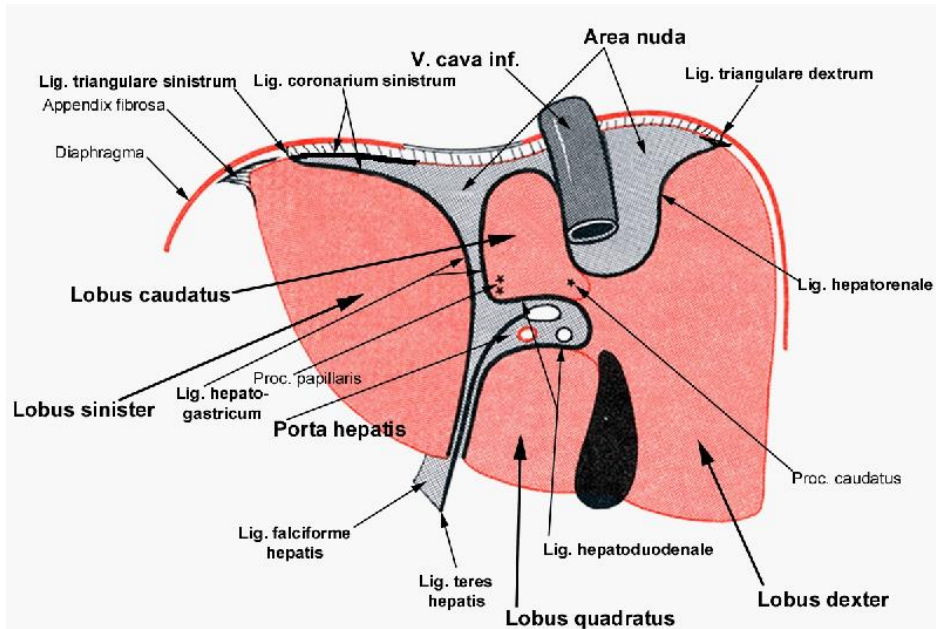






# Omentum minus et majus





## Omentum minus:

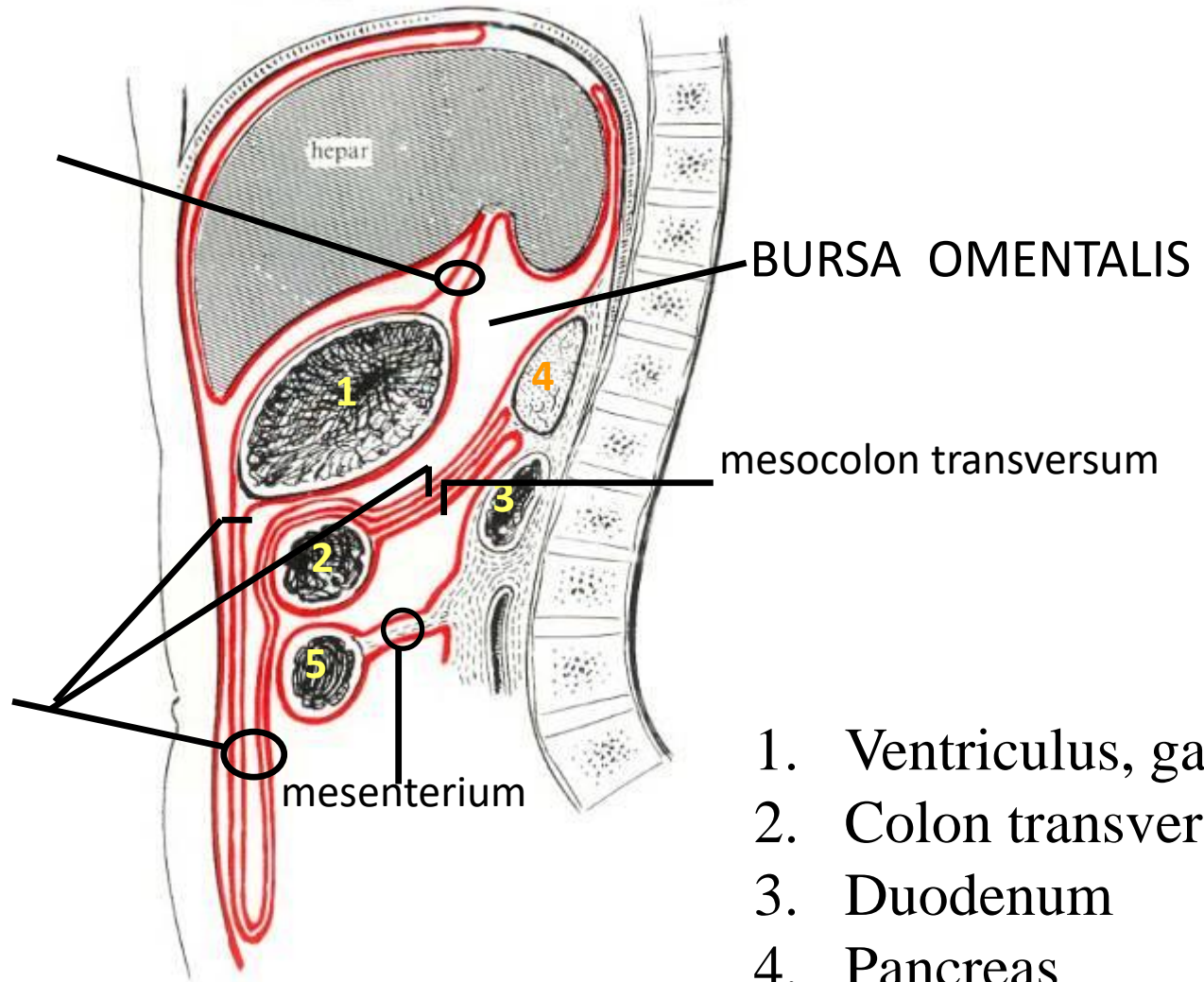
- lig. hepatogastricum
- lig. hepatoduodenale

**Kettőzet, négyeze, hatozat!!!**

**Lig. gastrocolicum =  
omentum majus + mesocolon transversum**

lig. hepatogastricum

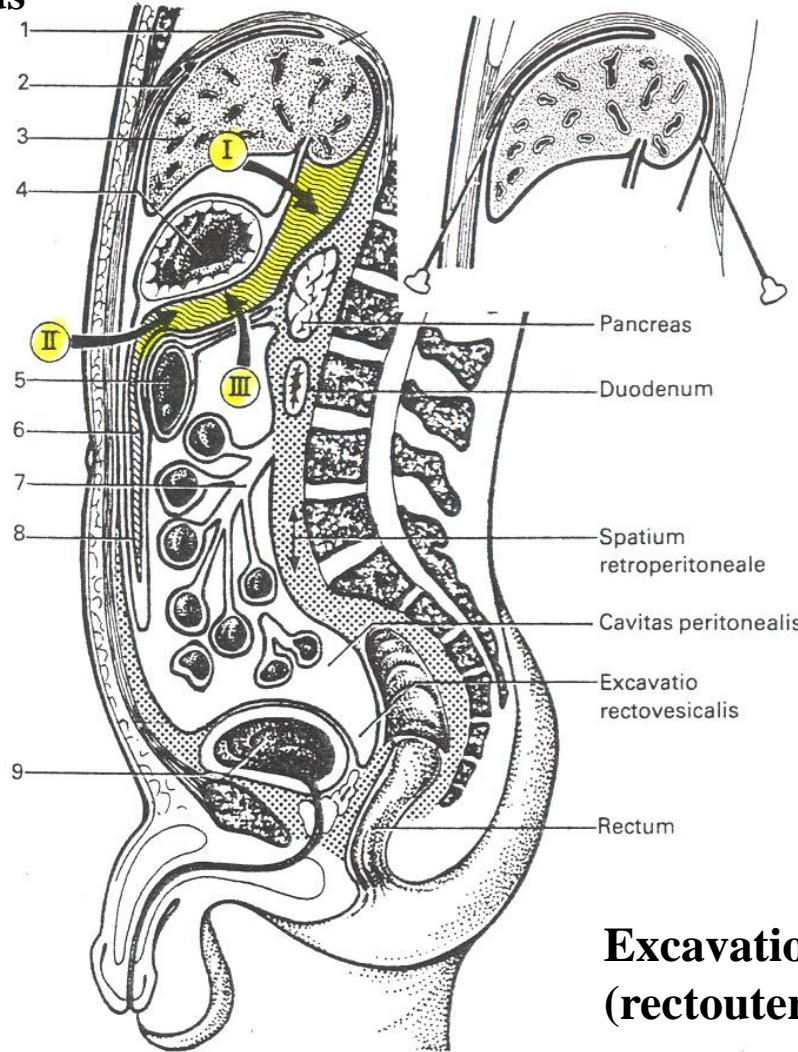
omentum majus



1. Ventriculus, gaster
2. Colon transversum
3. Duodenum
4. Pancreas
5. Vékonybelek  
(jejunum, ileum)

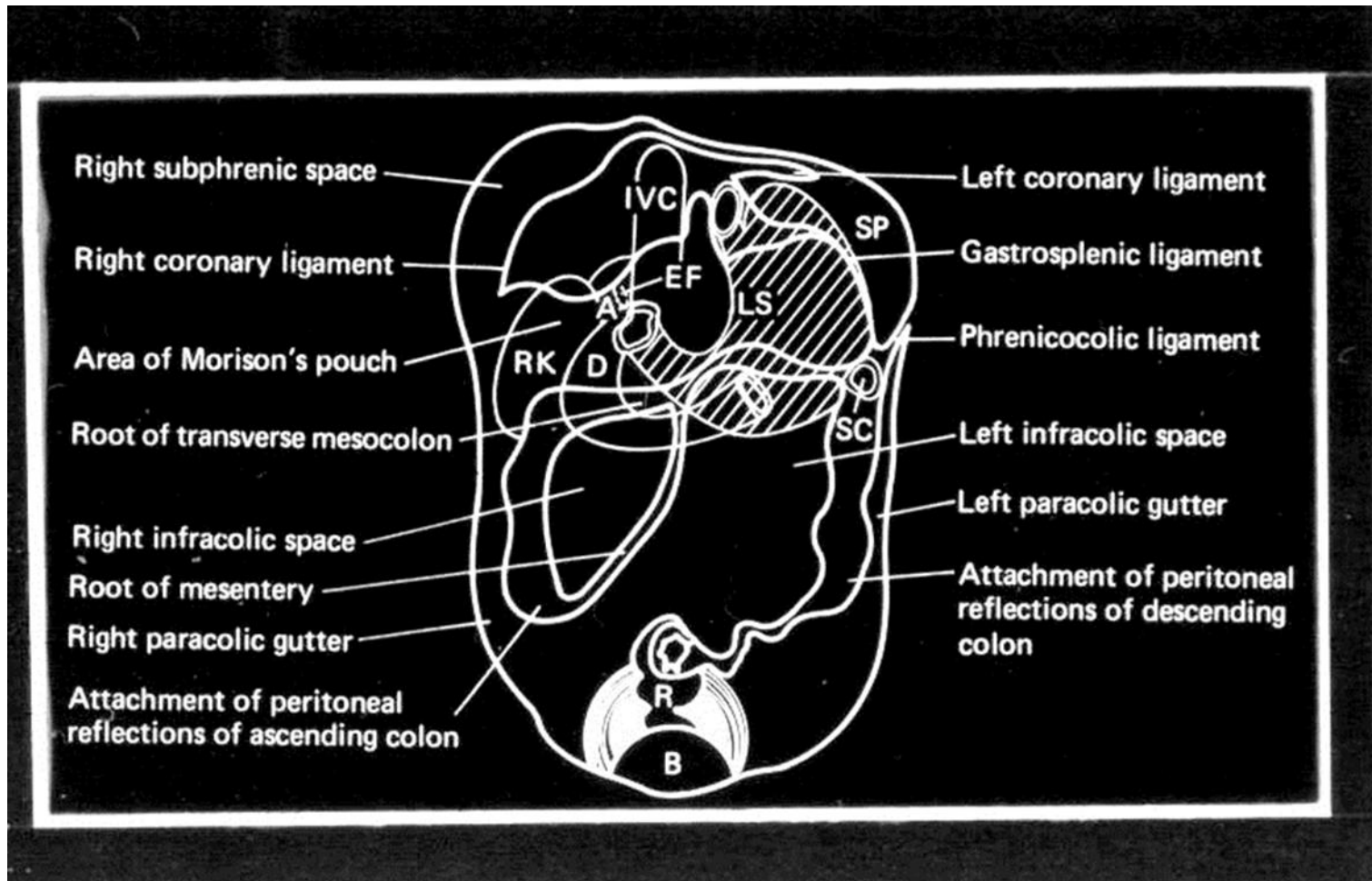
# A hasüreg legmagasabb és legmélyebb pontja

**Recessus hepatophrenicus**  
**= subphrenicus**



**Excavatio rectovesicalis**  
**(rectouterina) - Douglas**

# Hashártyai recessusok és jelentőségük



**Köszönöm megtisztelő figyelmüket!**

