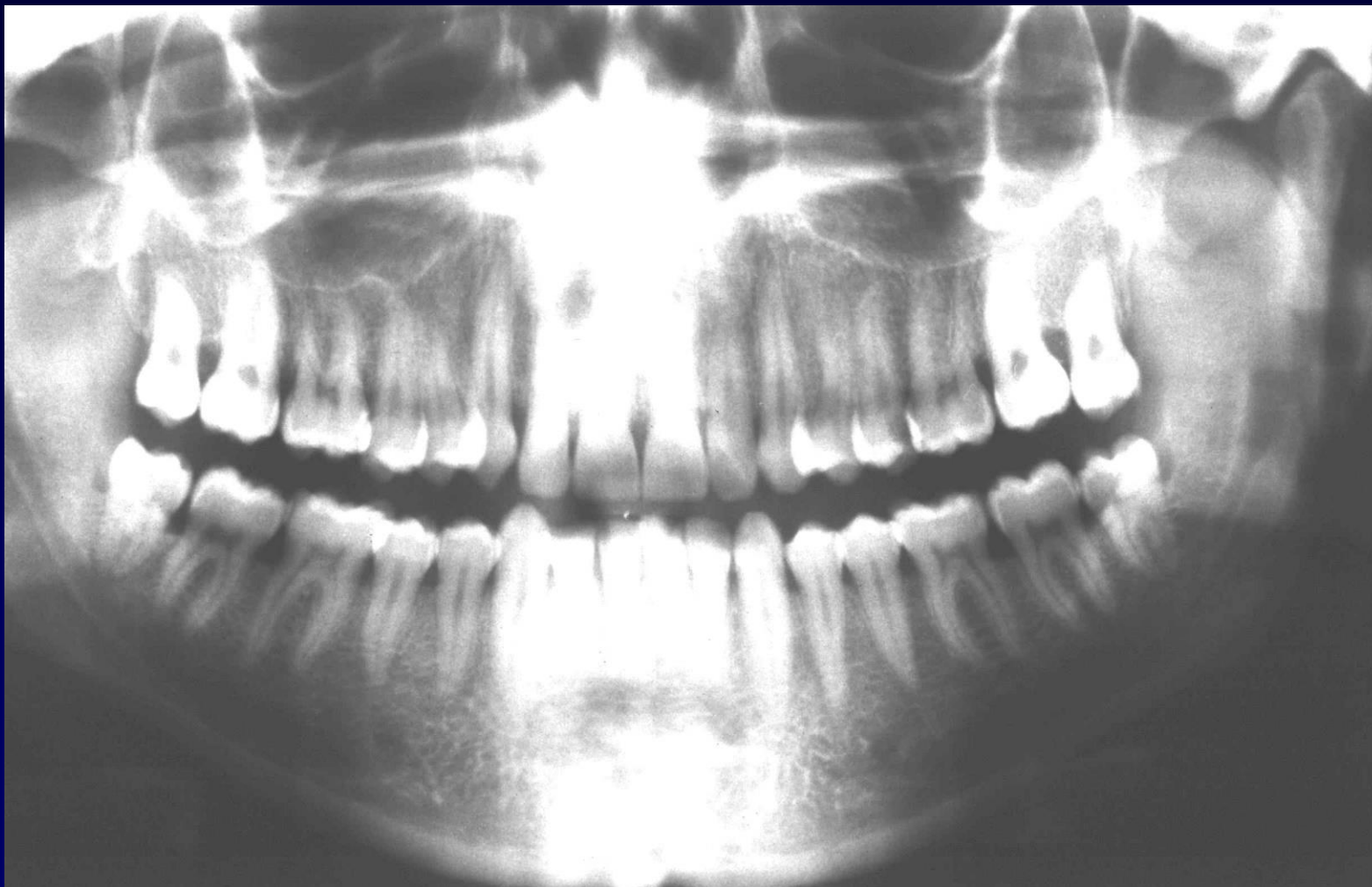
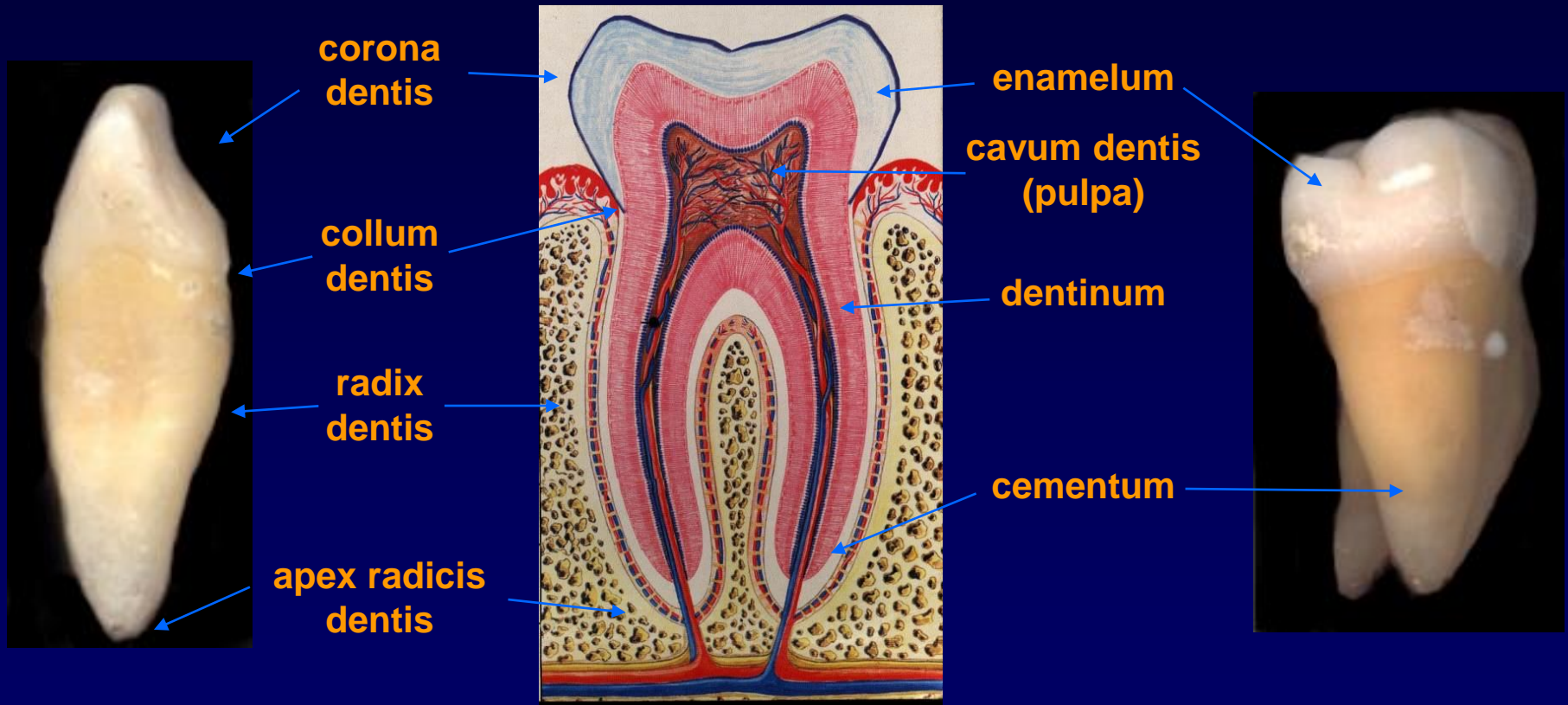


# FOGAK ANATÓMIÁJA

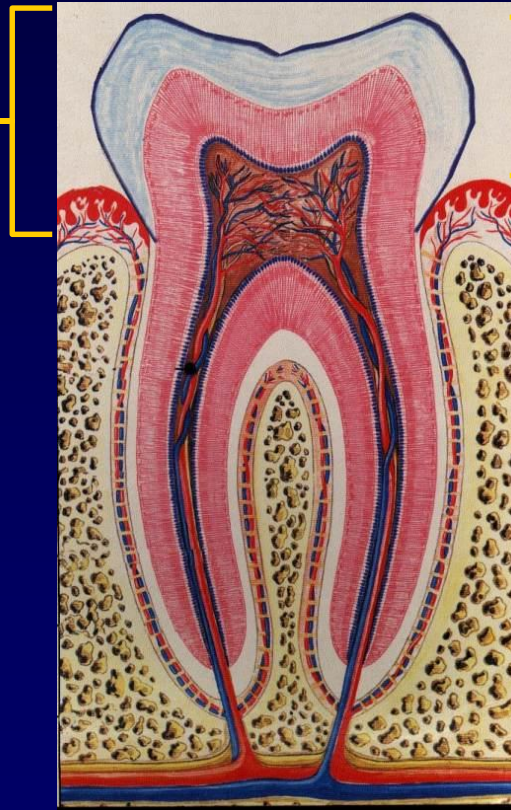


# FOGAK RÉSZEI



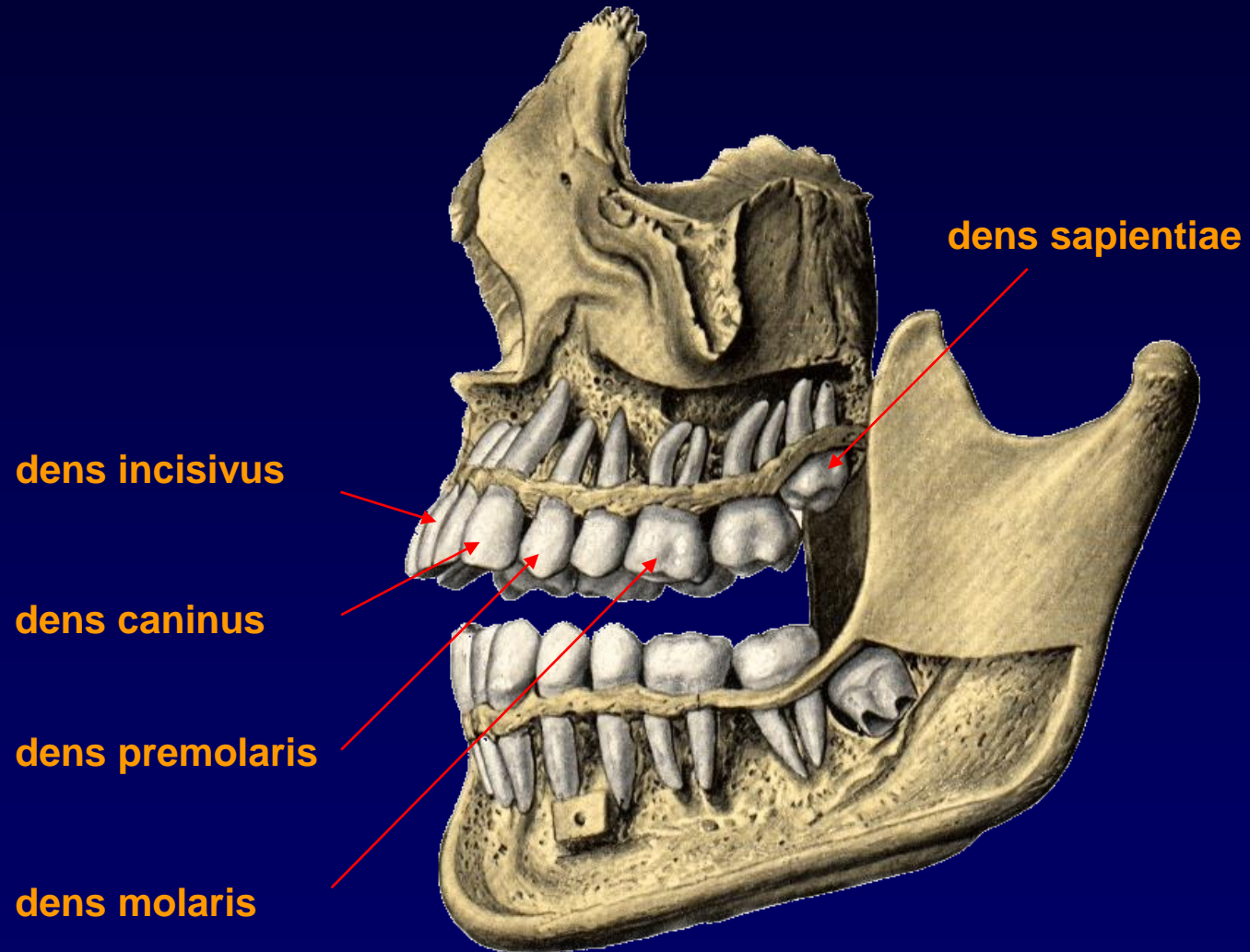
# FOGAK RÉSZEI

Anatómiai korona



Klinikai korona

# FOGAK FAJTÁI



# FOGAK JELÖLÉSE

FDI-rendszer (International Standards)



Zsigmondy-kereszt (Palmer Notation Method)

4

Universal Tooth Designation System (USA): 1-32 (jobb felső 8-as az 1, jobb alsó 8-as a 32)

# TEJFOGAK JELÖLÉSE

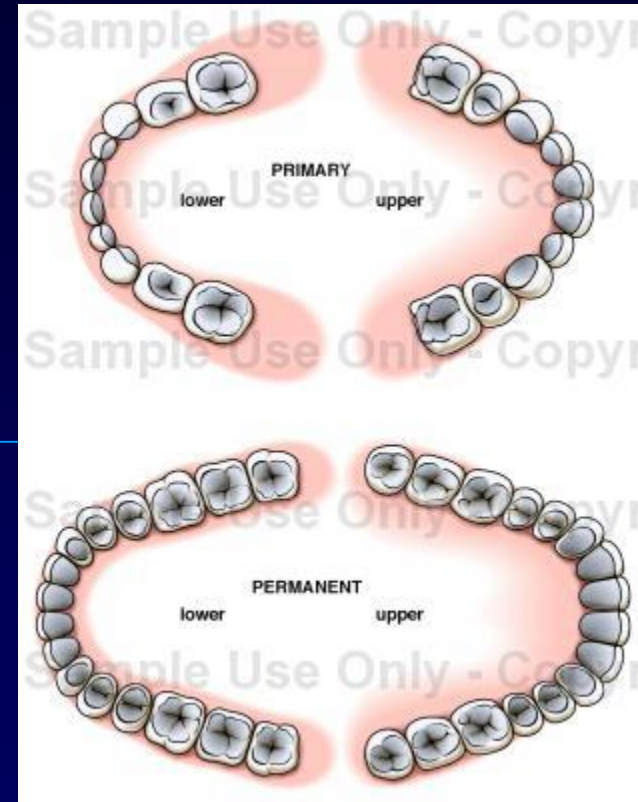
## FDI-rendszer (International Standards)

55	54	53	52	51	61	62	63	64	65
85	84	83	82	81	71	72	73	74	75

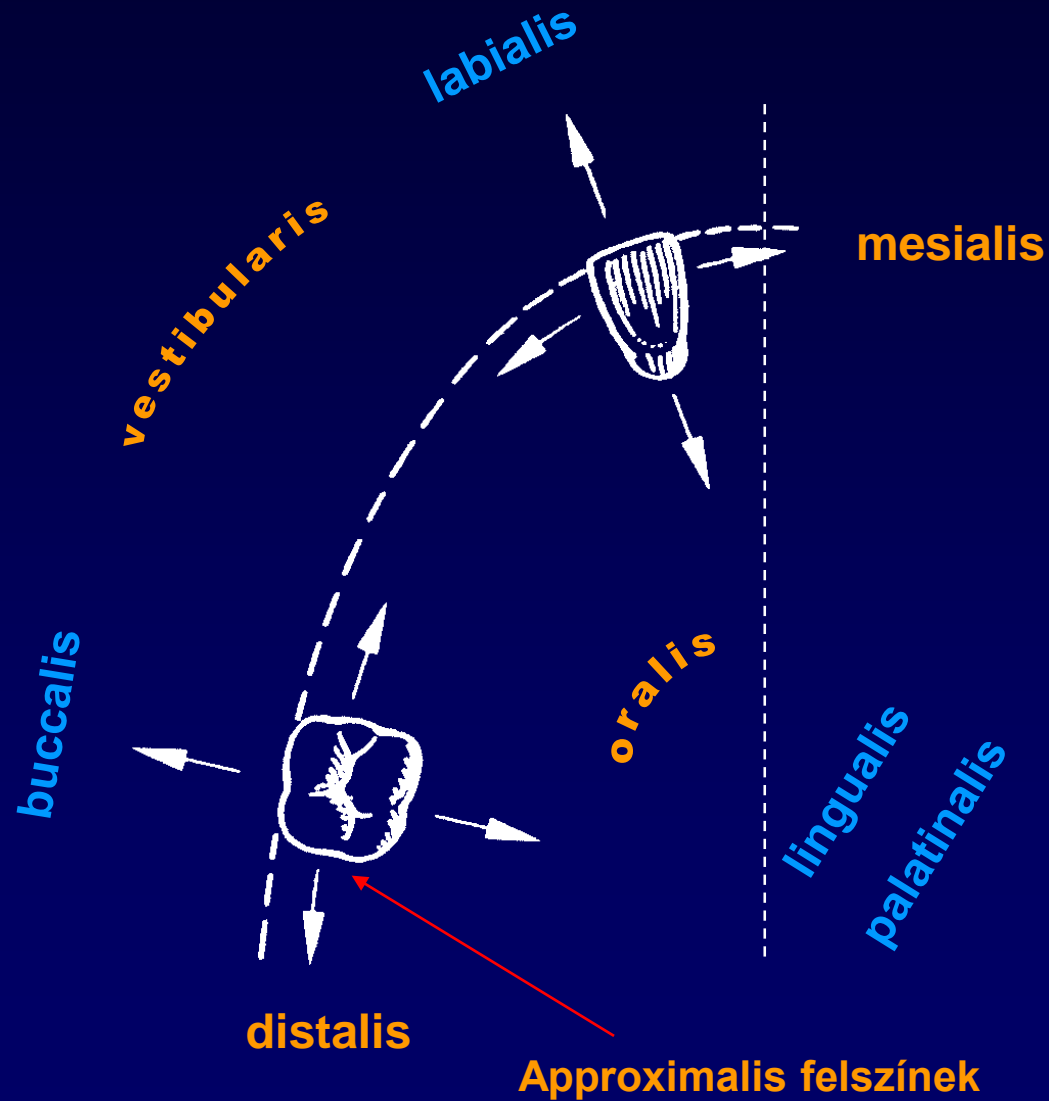
## Zsigmondy-kereszt (Palmer Notation Method)

E	D	C	B	A	A	B	C	D	E
E	D	C	B	A	A	B	C	D	E

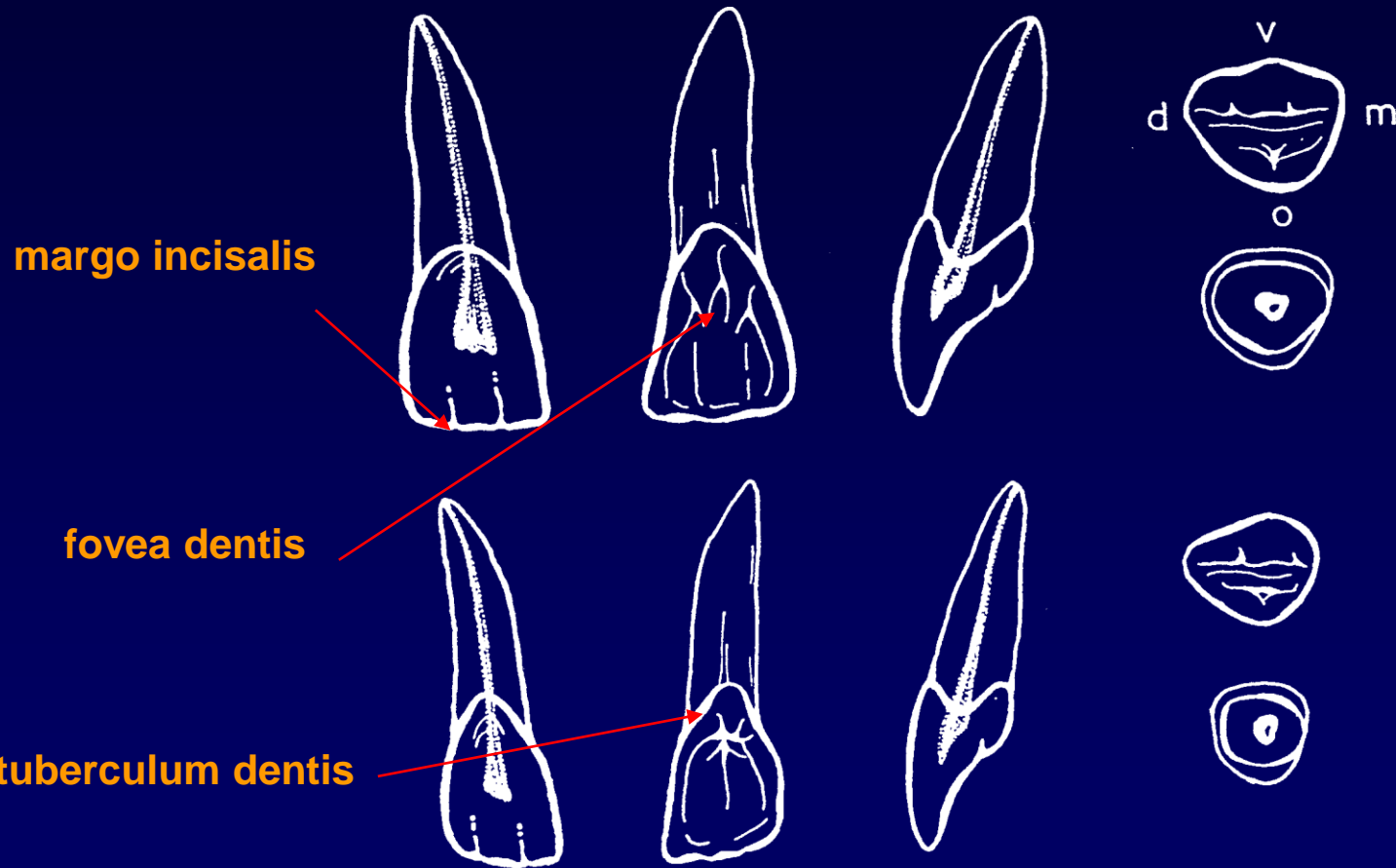
IV



# FOGAK ELHELYEZKEDÉSÉVEL KAPCSOLATOS IRÁNYOK



# DENTES INCISIVI SUPERIORES



Hossz (mm): 23,7  
22,1

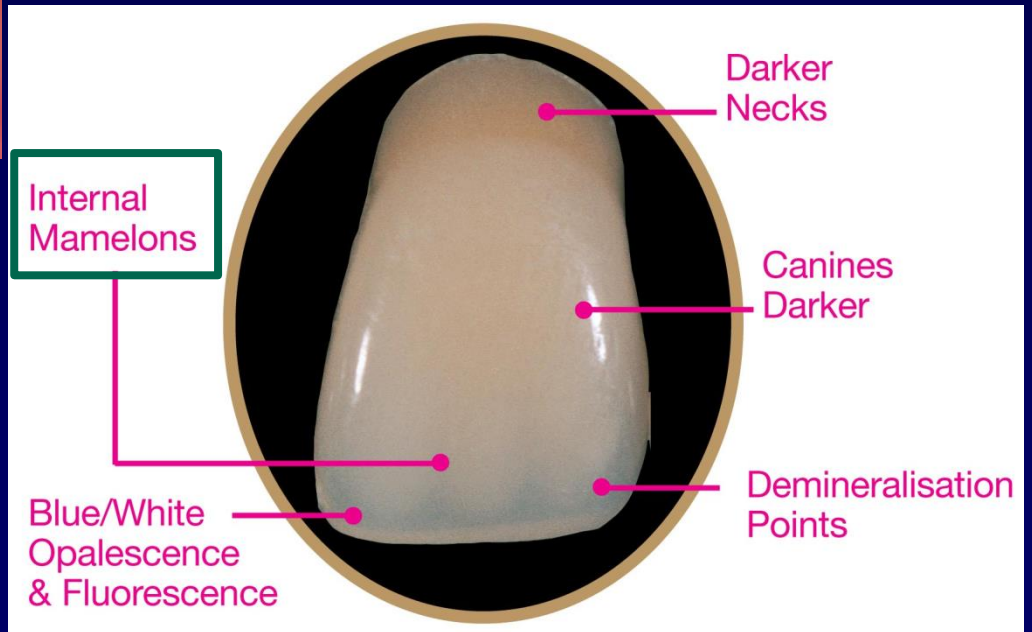
Gyökerek  
száma: 1

Csatornák  
száma: 1

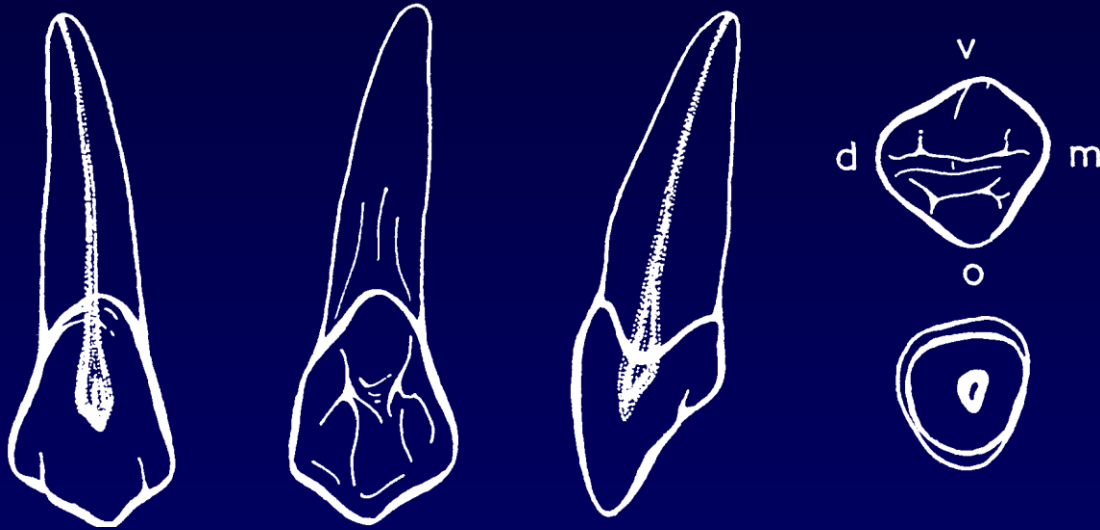


# Mamelonok (tuberculum)

(a klinikumban színárnyalatok)



# DENS CANINUS SUPERIOR

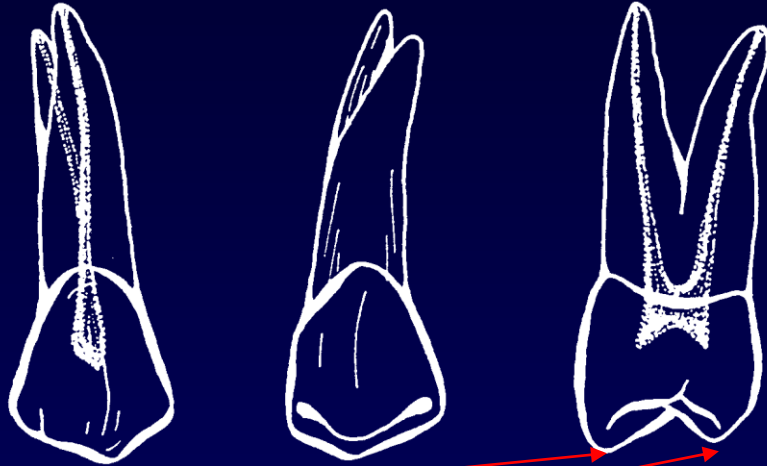


**Hossz (mm): 27,3**

**Gyökerek  
száma: 1**

**Csatornák  
száma: 1**

# DENTES PREMOLARES SUPERIORES



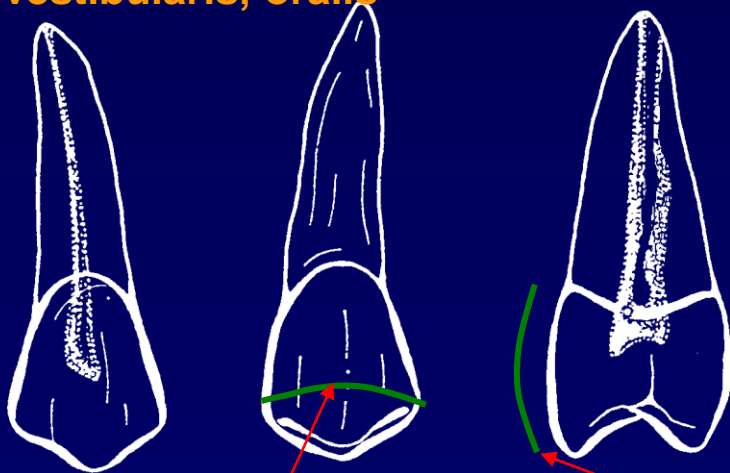
facies oclusalis

Hossz (mm): 22,3

Gyökerek száma: 2

Csatornák száma: 2 (90%)

Cuspis vestibularis, oralis



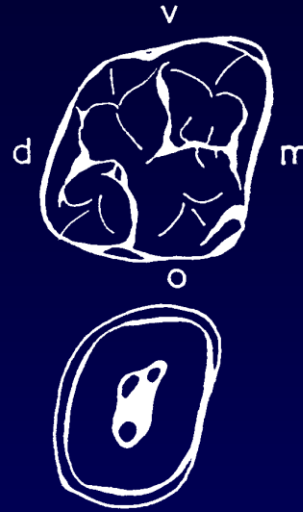
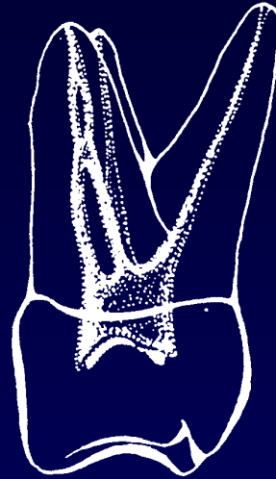
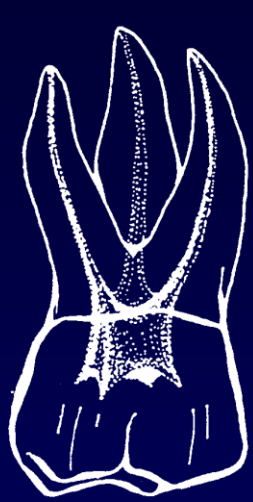
Gyökerek száma: 1-2

Csatornák száma: 2 (58%)

mesio-distalis

gingivo-occlusalis

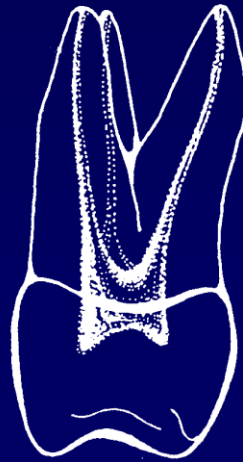
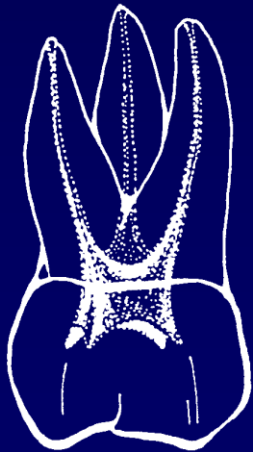
# DENTES MOLARES SUPERIORES



Hossz (mm): 22,3  
22,2

Gyökerek  
száma: 3

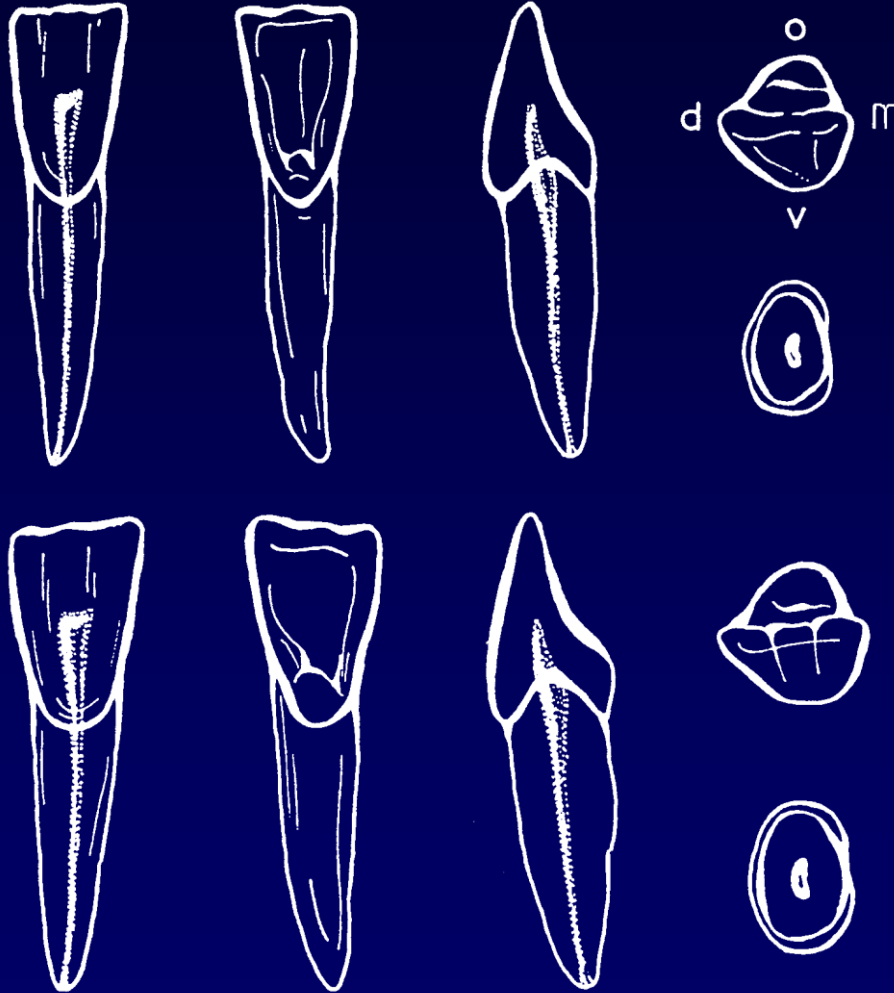
Csatornák  
száma: 3-4  
(mesiobuccalisban 2 lehet)





**tuberculum Carabelli**

# DENTES INCISIVI INFERIORES

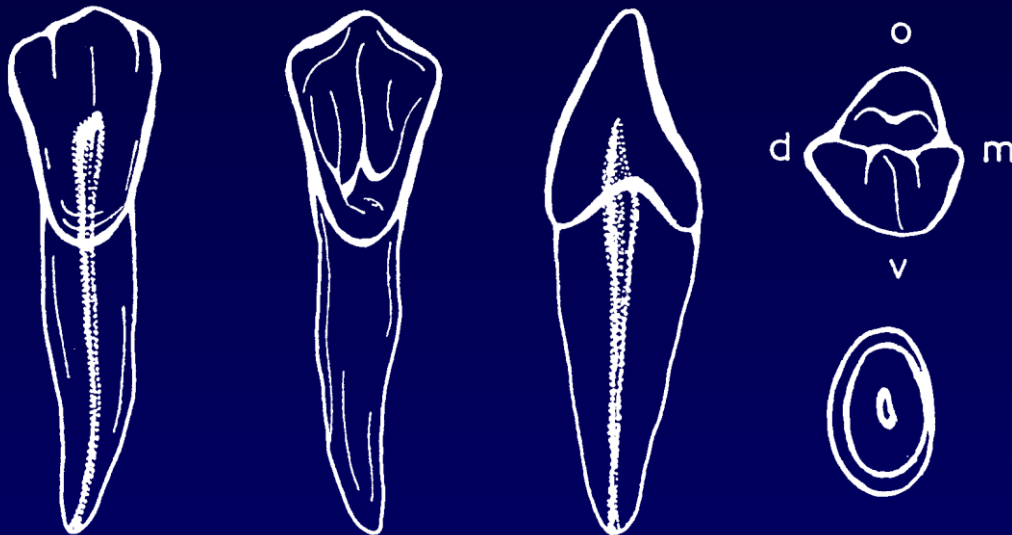


Hossz (mm): 21,8  
23,3

Gyökerek  
száma: 1

Csatornák  
száma: 1

# DENS CANINUS INFERIOR

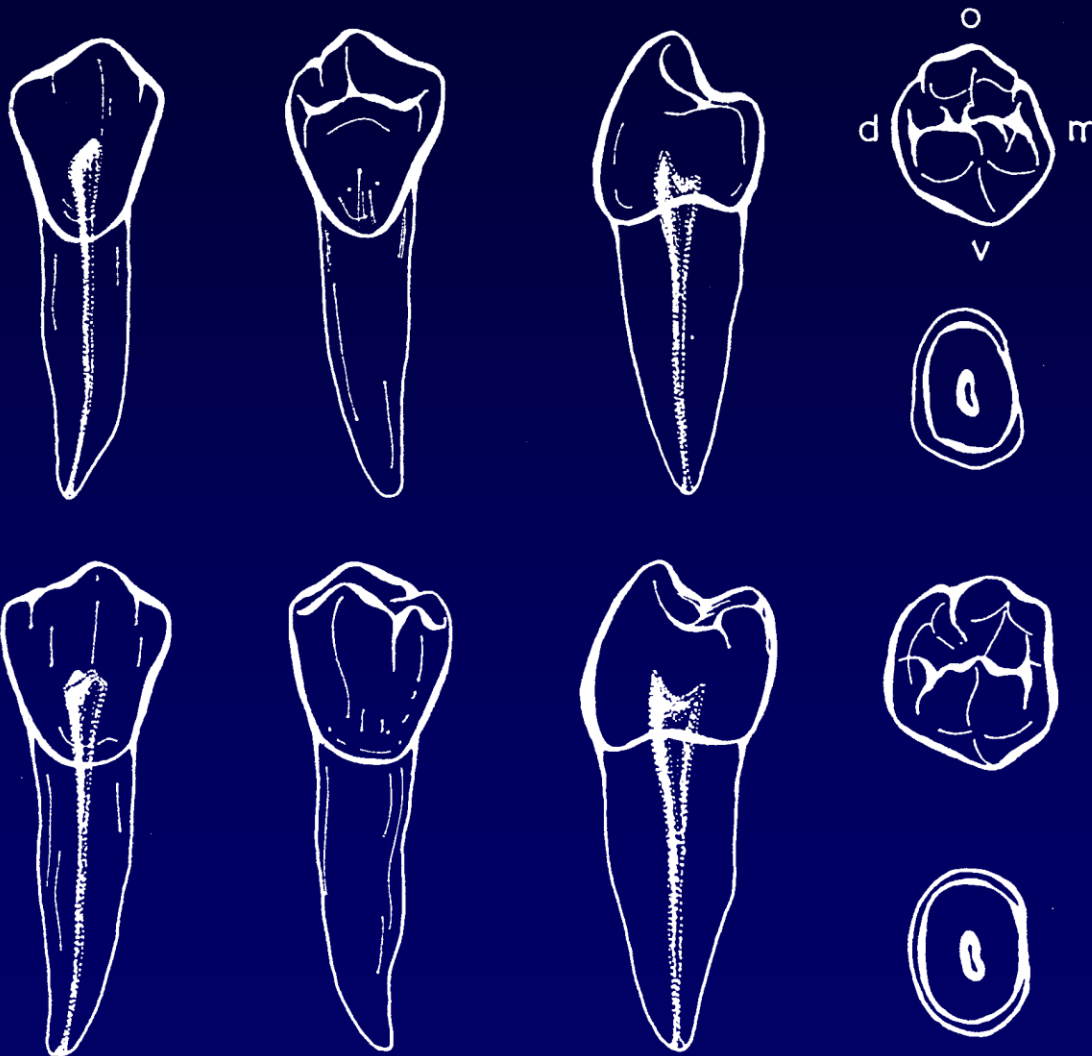


**Hossz (mm): 26,0**

**Gyökerek  
száma: 1**

**Csatornák  
száma: 1**

# DENTES PREMOLARES INFERIORES



Hossz (mm): 22,9  
22,3

Gyökerek  
száma: 1

Csatornák  
száma: 1



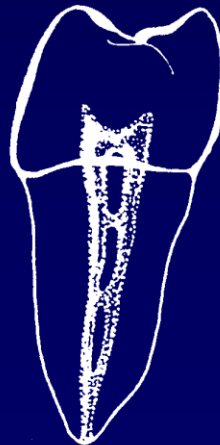
# DENTES MOLARES INFERIORES



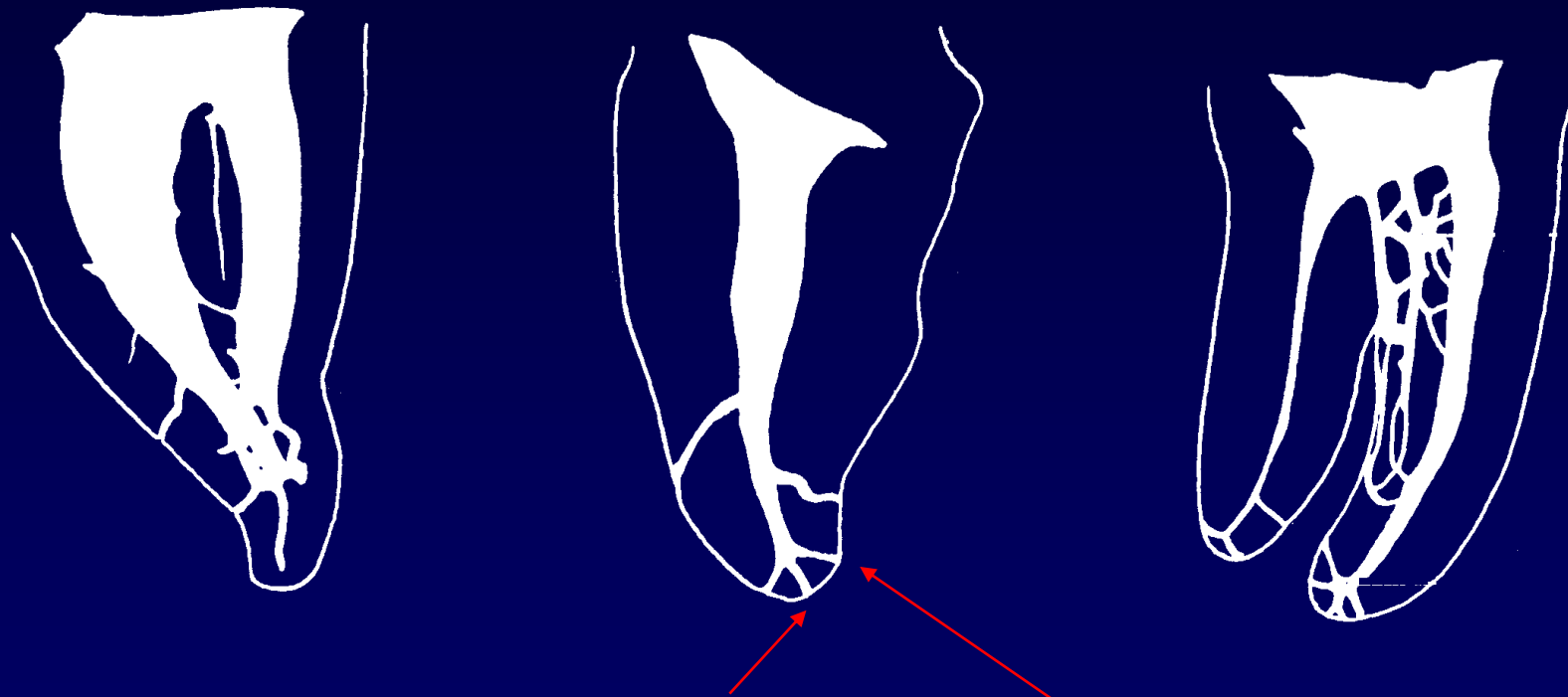
Hossz (mm): 22,0  
21,7

Gyökerek  
száma: 2

Csatornák  
száma: 3-4

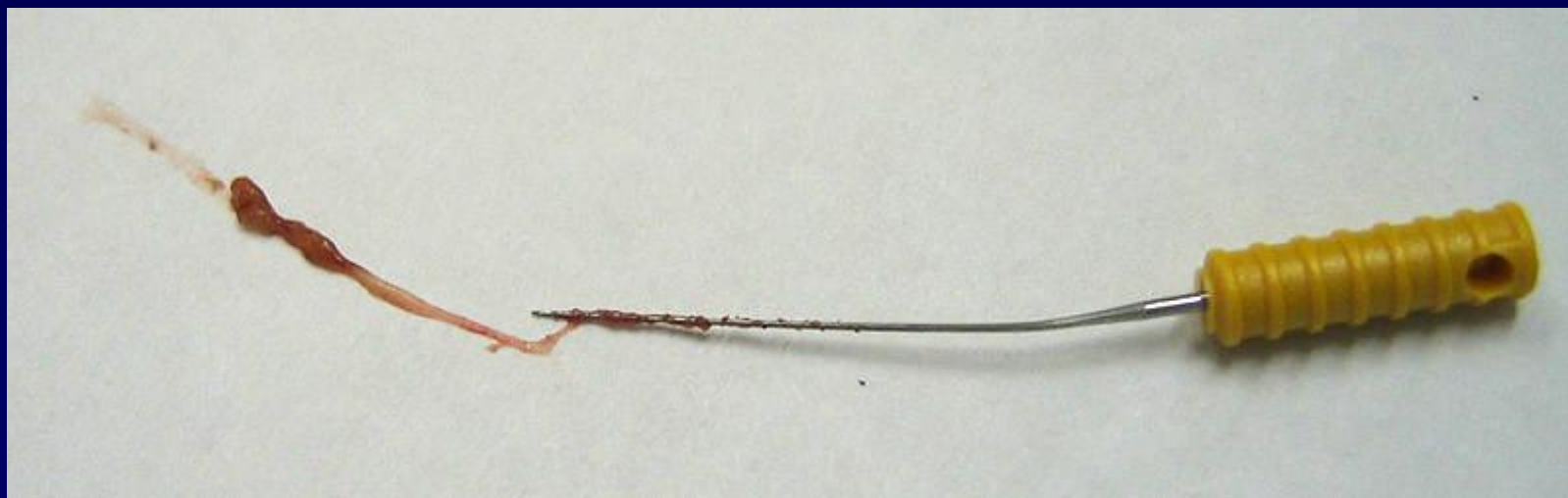
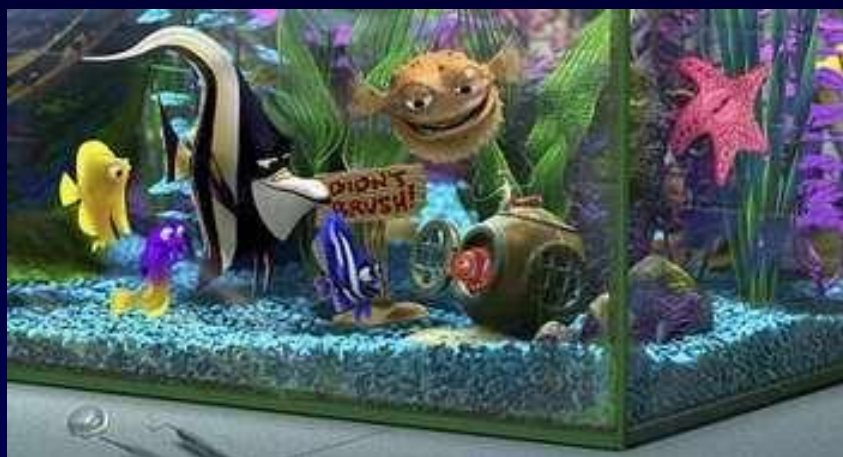


## Gyökércsatornák variációi

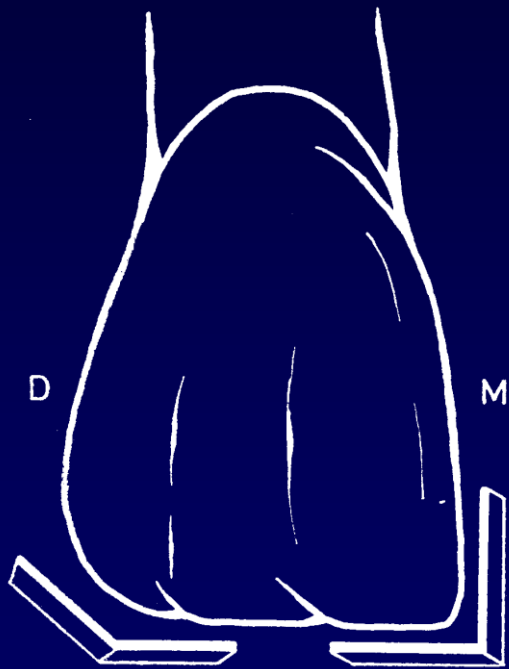


Foramen apicale

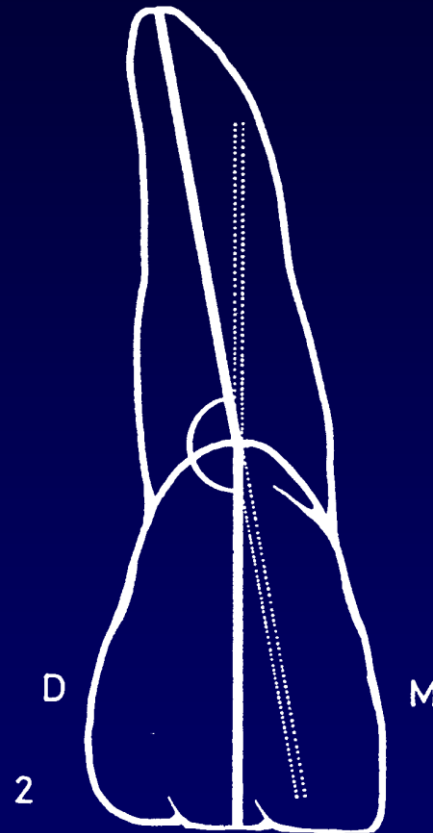
Canalis accessorius radialis



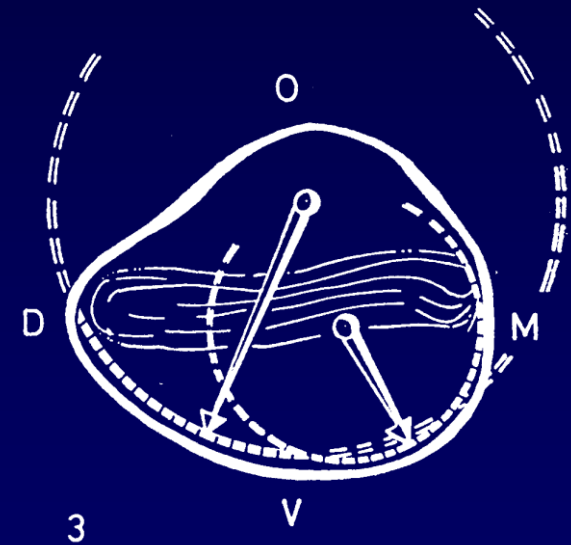
# MÜHLREITER - JELEK



**Szögletjel**

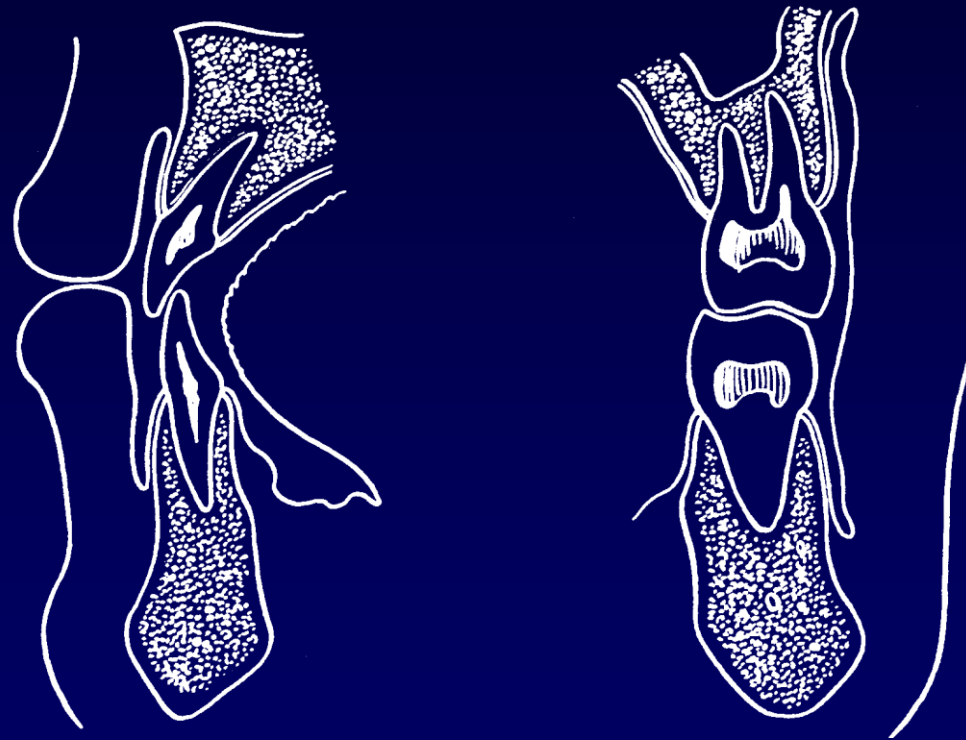


**Gyökerjel**

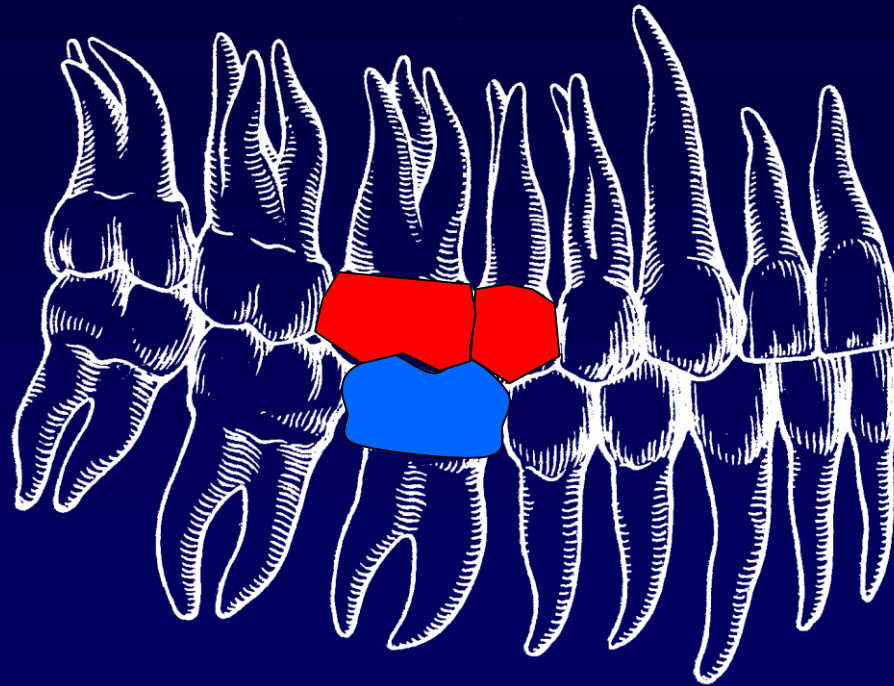


**Körfogati jel**

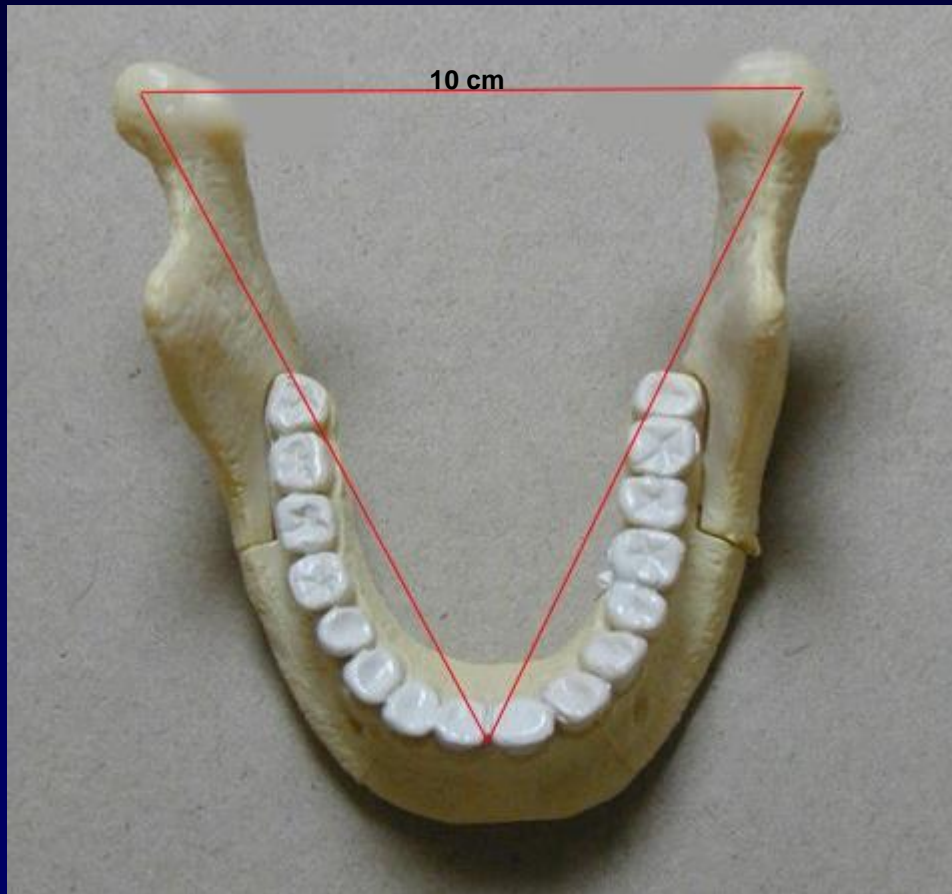
# OCCLUSIO



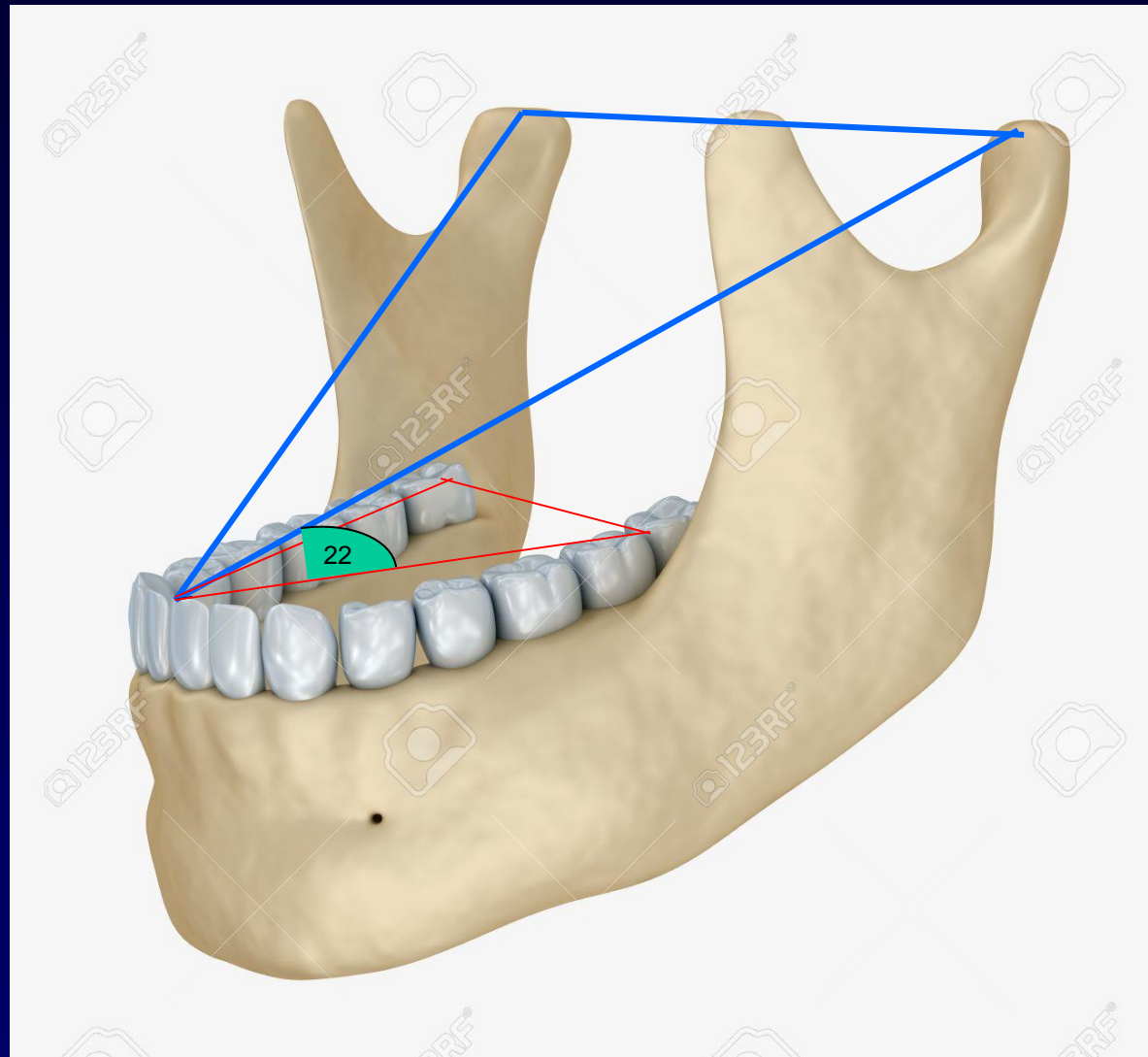
# OCCLUSIÓS EGYSÉG



# Bonwill-háromszög

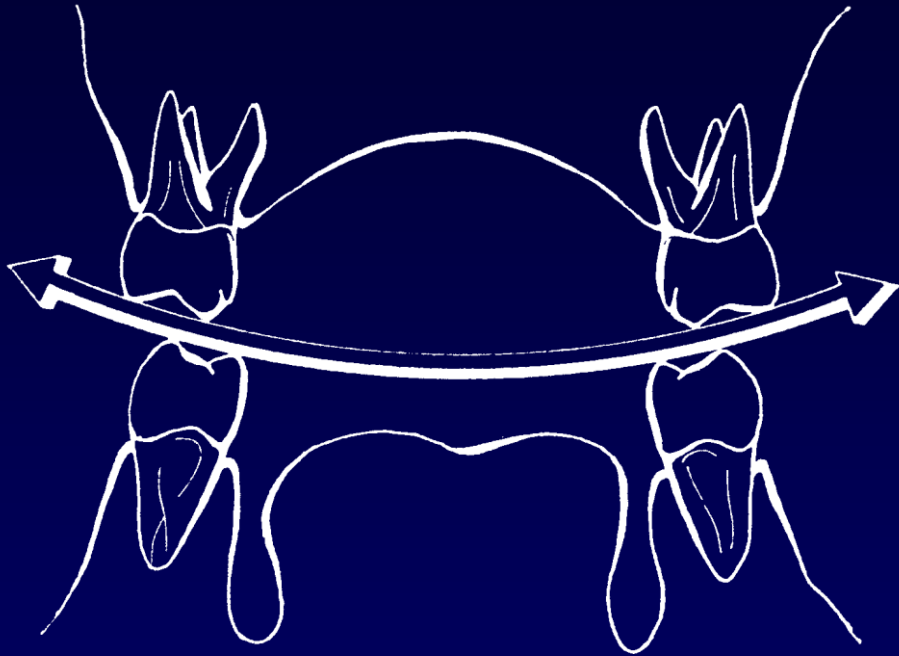


# Balkwill-szög

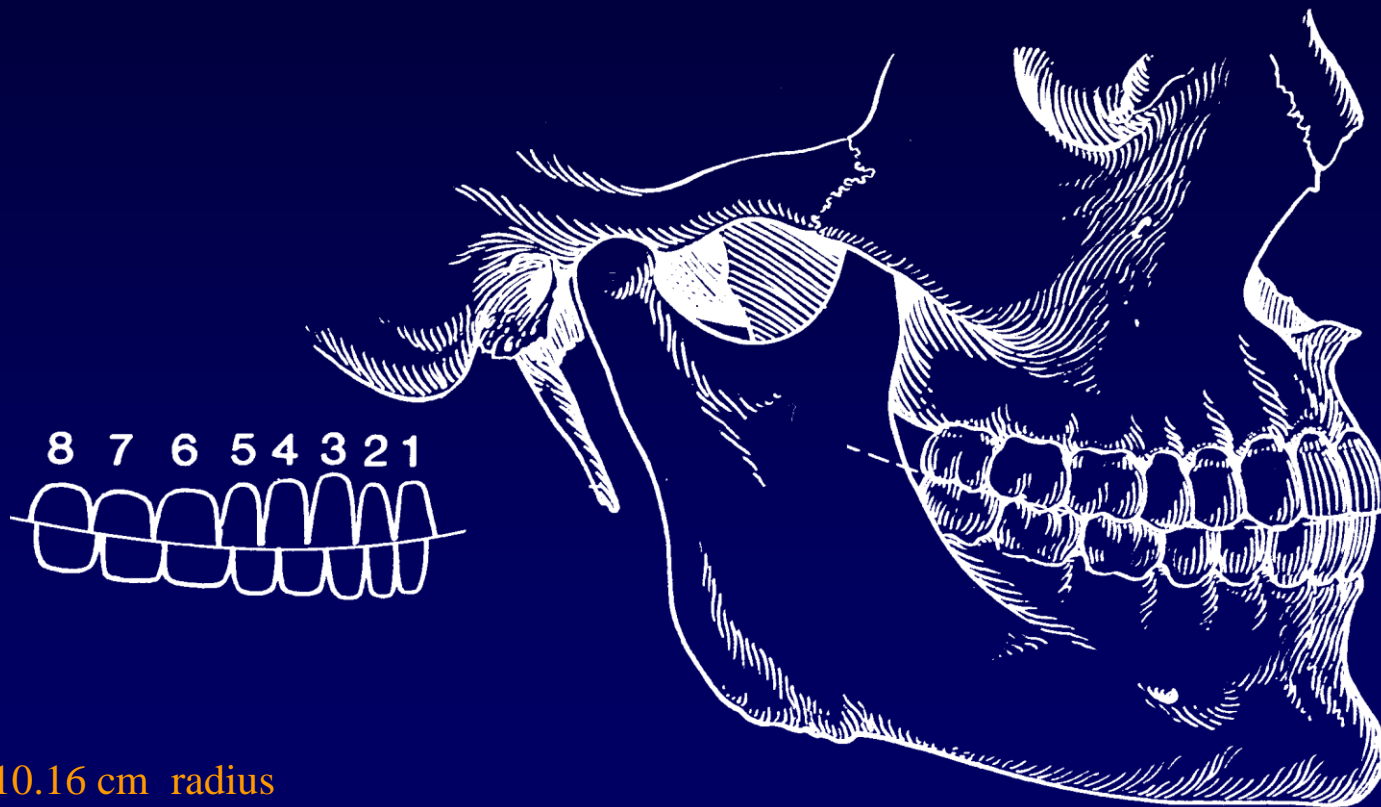




## WILSON - Görbe



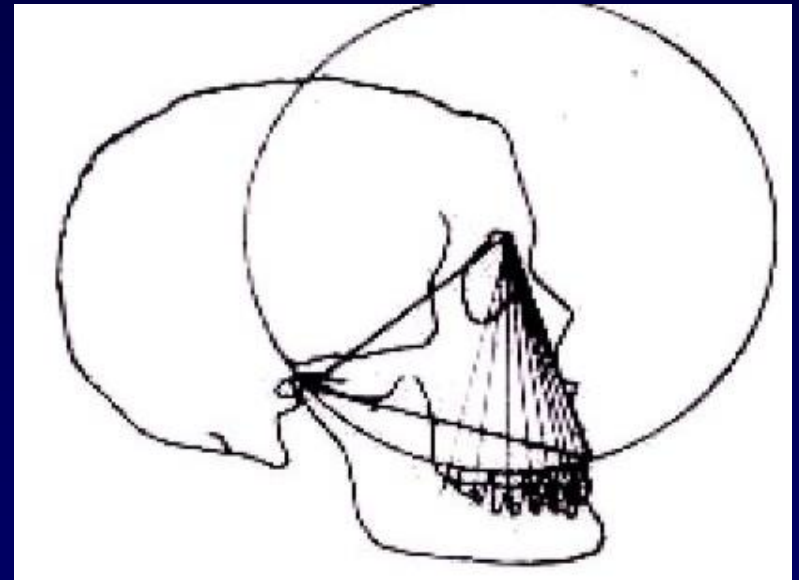
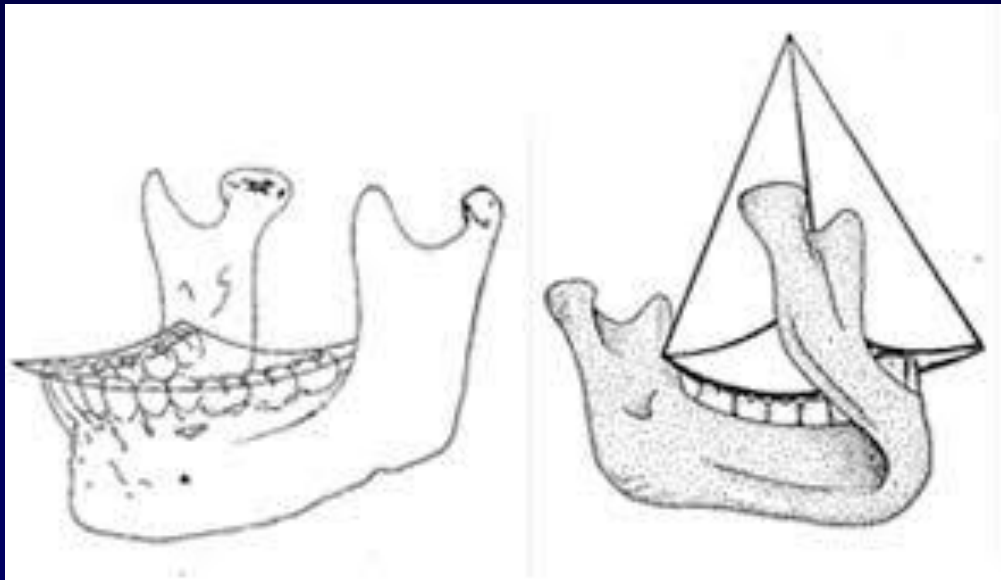
# SPEE - Görbe



10.16 cm radius

# MONSON – Görbe (Wilson + Spee ) occlusiós sík

Glabella régió a központ

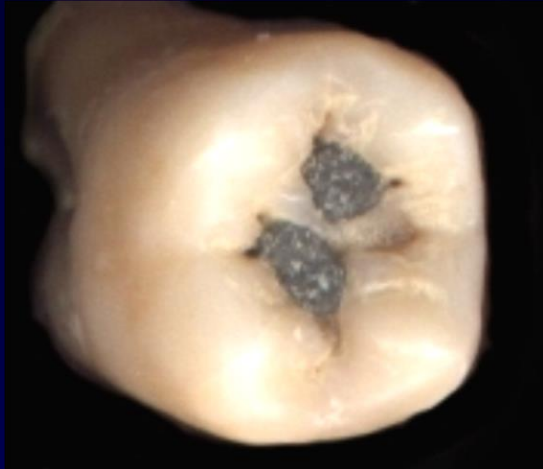


# FACIES OCCLUSALIS

46



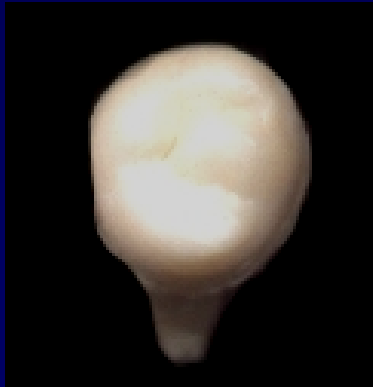
47



28



28



# VARIÁCIÓK



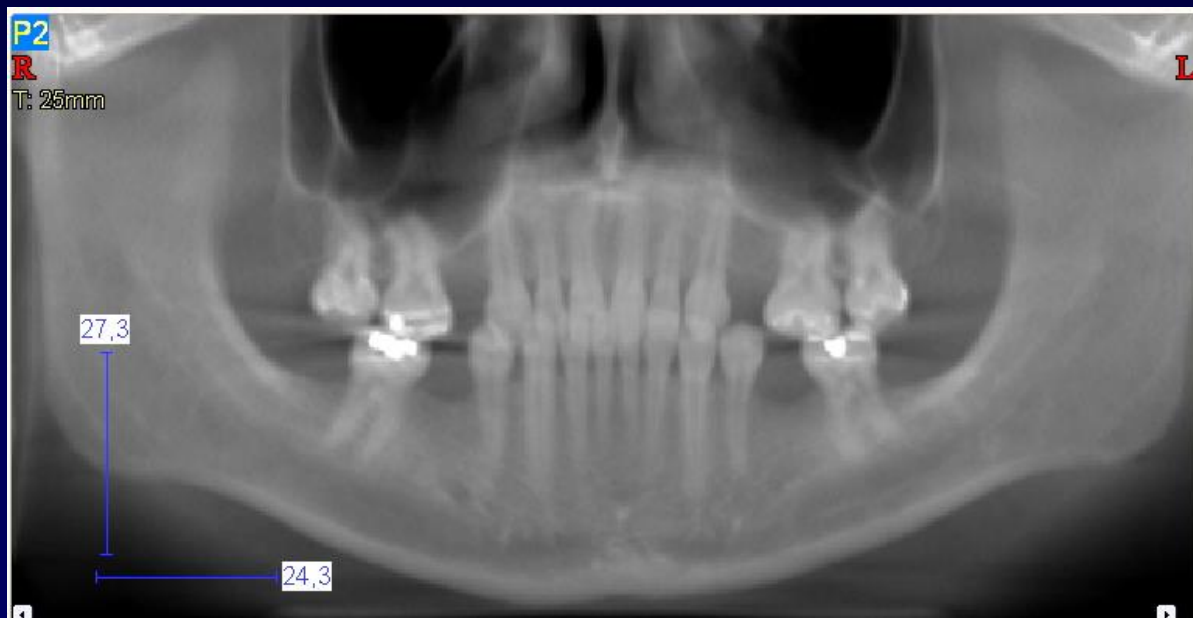
# FOGAK SZINE



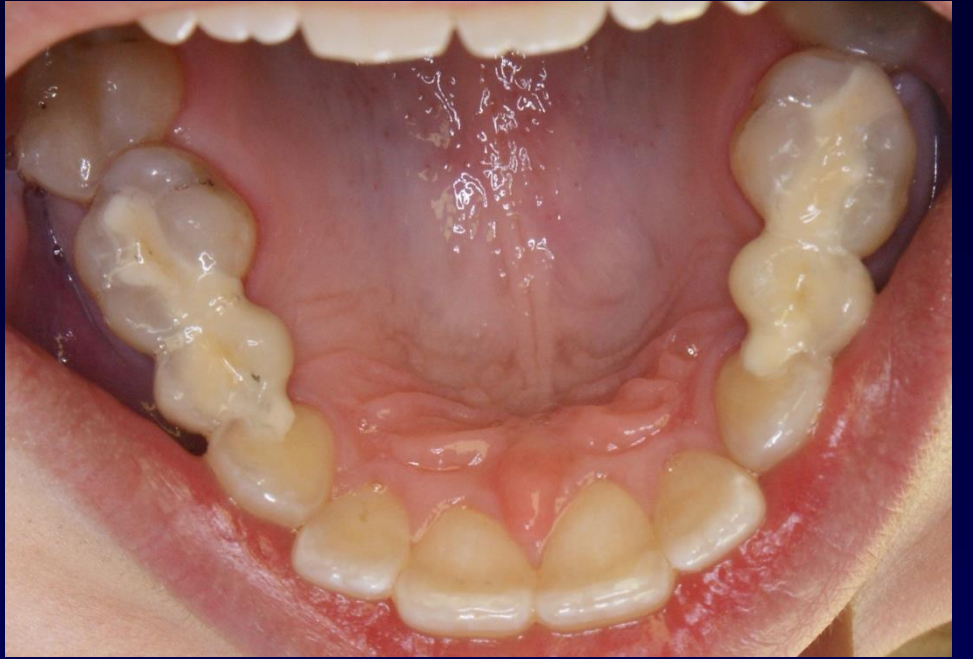
# CARIES



## *Bolk-féle terminális redukció*







# CAVUM DENTIS



