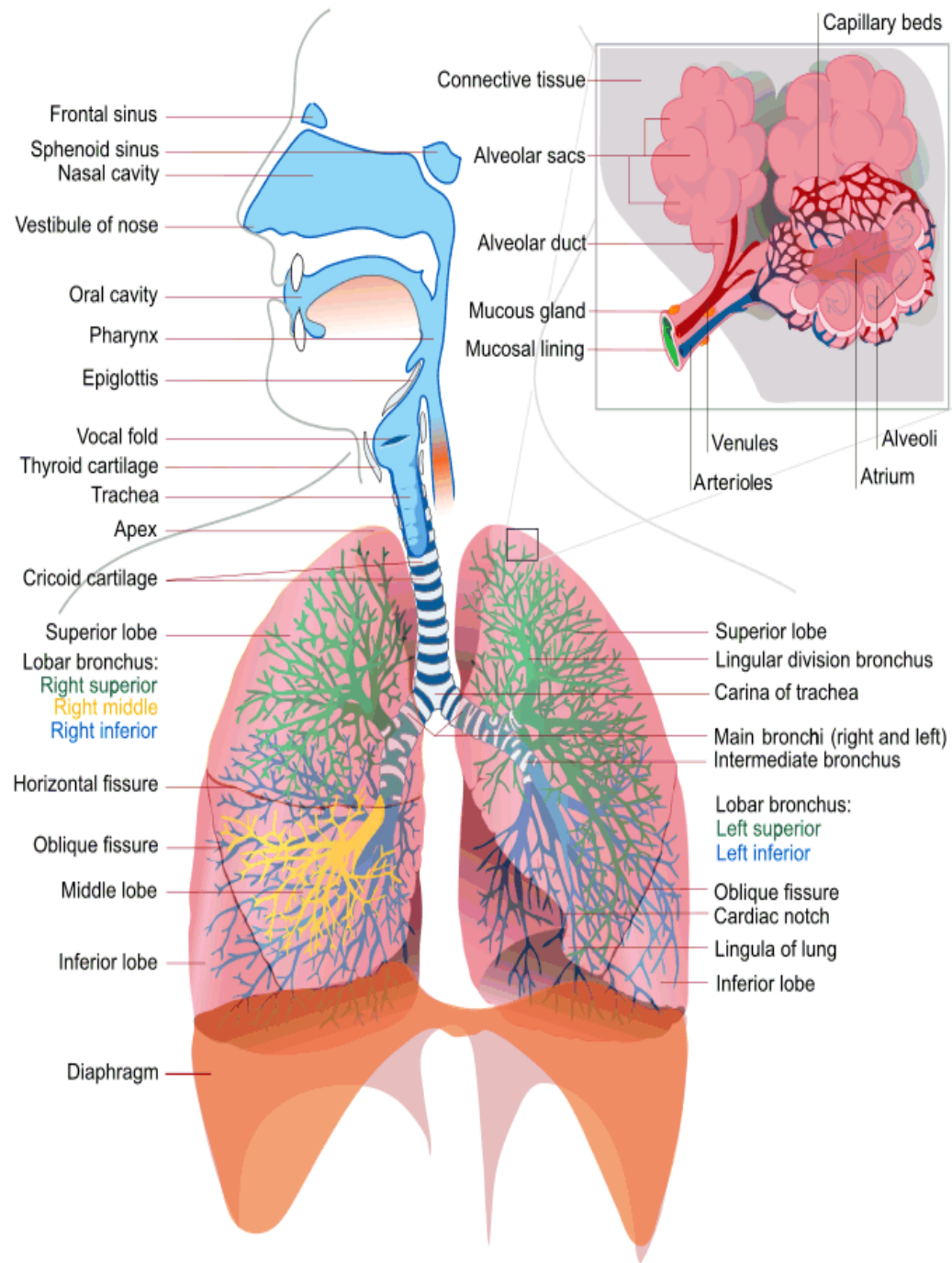
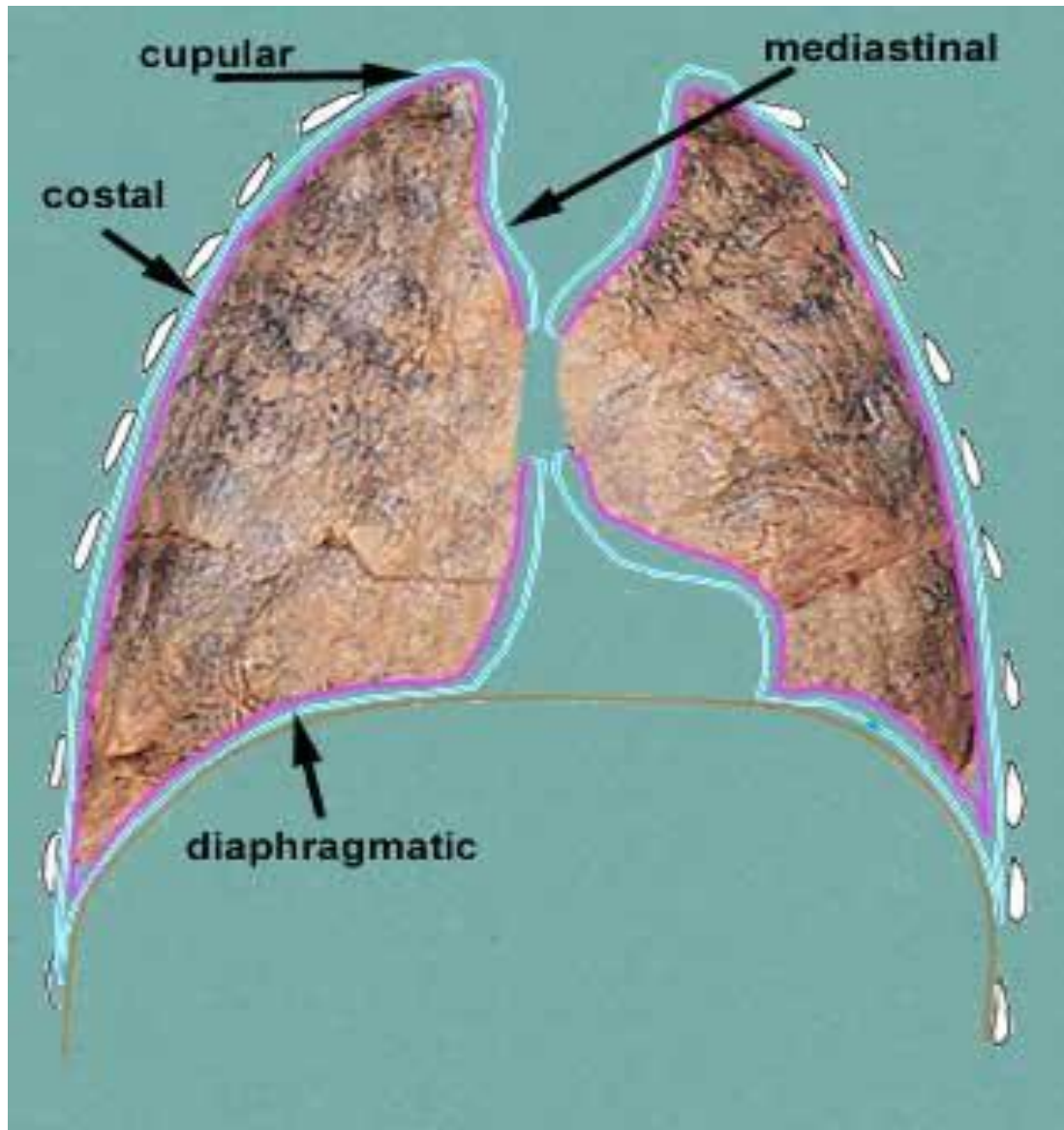


Tüdő, pleura, mediastinum

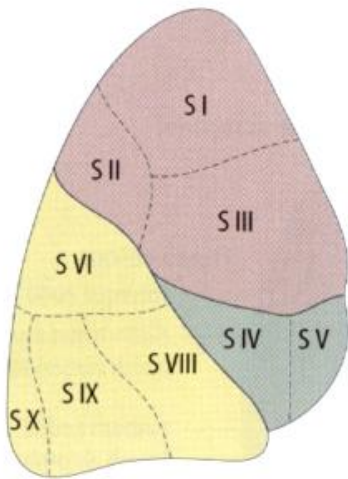
Dr. Ádám Ágota



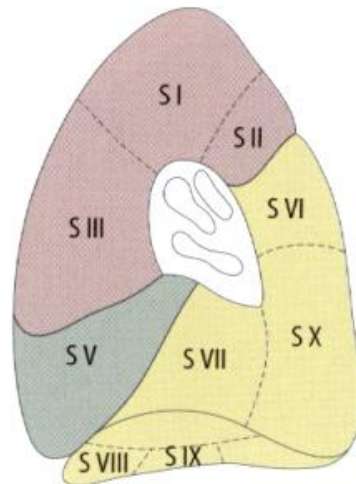
Pleura részei



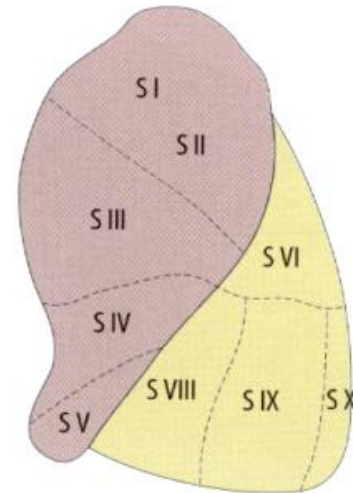
Bronchopulmonális szegmentumok



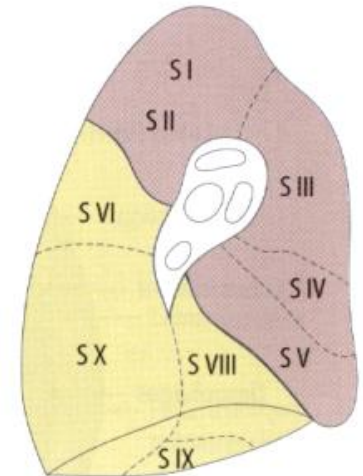
a Aspectus lat.



b Aspectus med.



c Aspectus lat.



d Aspectus med.

Pulmo dexter

- └ Lobus superior
 - └ Segmentum apicale S I
 - └ Segmentum posterius S II
 - └ Segmentum anterius S III
- └ Lobus medius
 - └ Segmentum laterale S IV
 - └ Segmentum mediale S V
- └ Lobus inferior
 - └ Segmentum superius S VI
 - └ Segmentum basale mediale (cardiacum) S VII
 - └ Segmentum basale anterius S VIII
 - └ Segmentum basale laterale S IX
 - └ Segmentum basale posterius S X

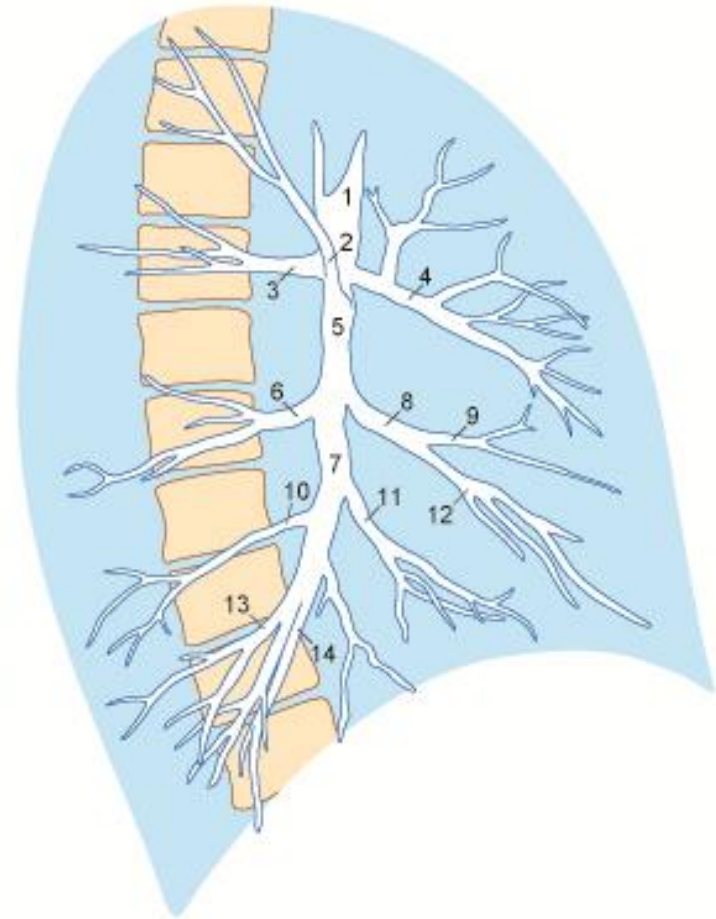
Pulmo sinister

- └ Lobus superior
 - └ Segmentum apicoposterius S I + S II
 - └ Segmentum anterius S III
 - └ Segmentum lingulare superius S IV
 - └ Segmentum lingulare inferius S V
- └ Lobus inferior
 - └ Segmentum superius S VI
 - └ [Segmentum basale mediale (Segmentum cardiacum) S VII]
 - └ Segmentum basale anterius S VIII
 - └ Segmentum basale laterale S IX
 - └ Segmentum basale posterius S X

[] általában hiányzik a bal tüdőnél

a, b = jobb tüdő
c, d = bal tüdő

Jobb tüdő, bronchographia, lateralis nézet



T46

1. Bronchus principalis dexter
2. Bronchus segmentalis apicalis lobii superioris
3. Bronchus segmentalis posterior lobii superioris
4. Bronchus segmentalis anterior lobii superioris
5. Bronchus intermedius
6. Bronchus segmentalis apicalis lobii inferioris
7. Bronchus lobaris inferior
8. Bronchus lobaris medius

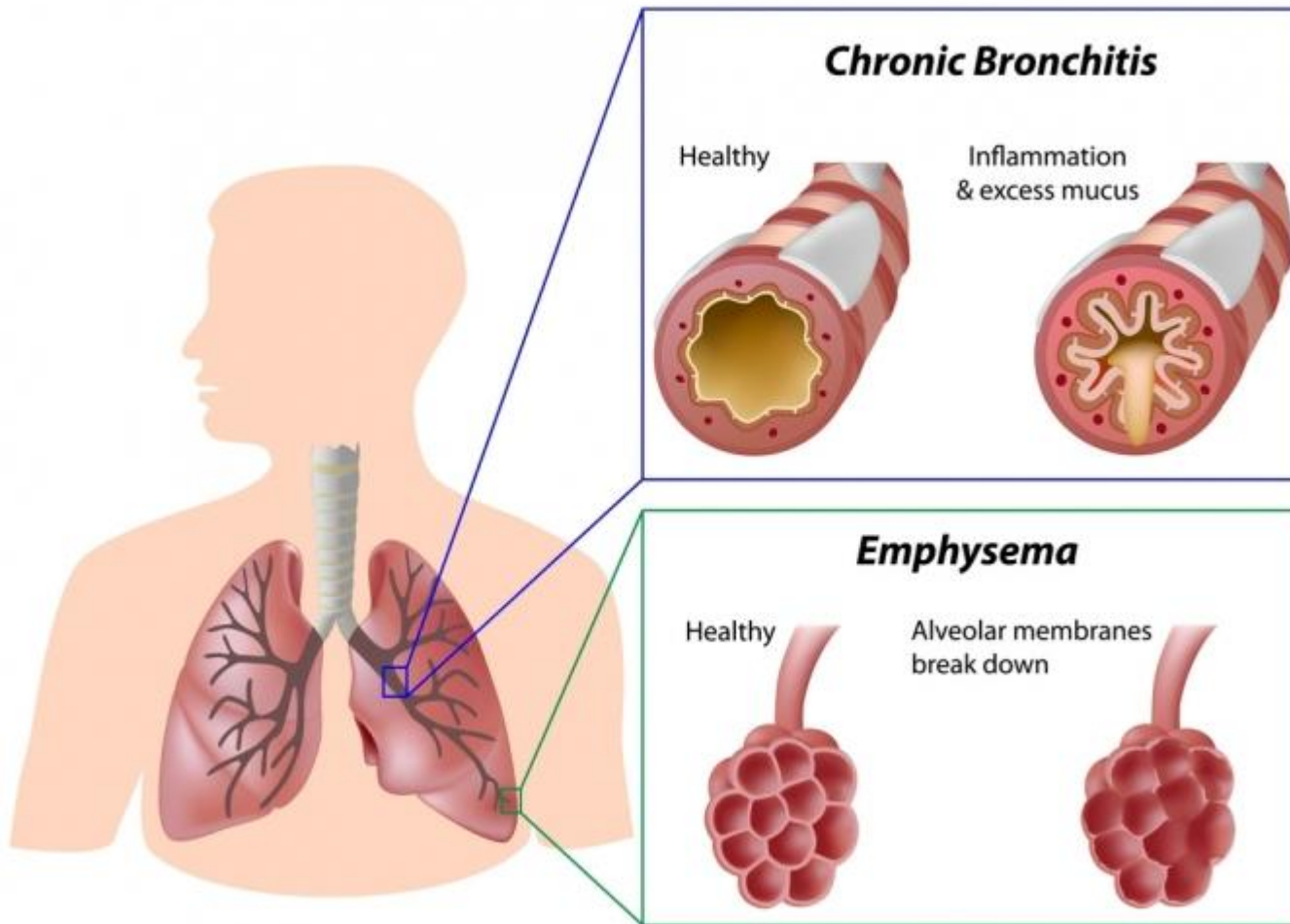
9. Bronchus segmentalis lateralis lobii medii
10. Bronchus segmentalis basalis posterior lobii inferioris
11. Bronchus segmentalis basalis anterior lobii inferioris
12. Bronchus segmentalis medialis lobii medii
13. Bronchus segmentalis basalis lateralis lobii inferioris
14. Bronchus segmentalis basalis medialis lobii inferioris

Dohányzó vs. nem dohányzó tüdő



Chronic Obstructive Pulmonary Disease (COPD)

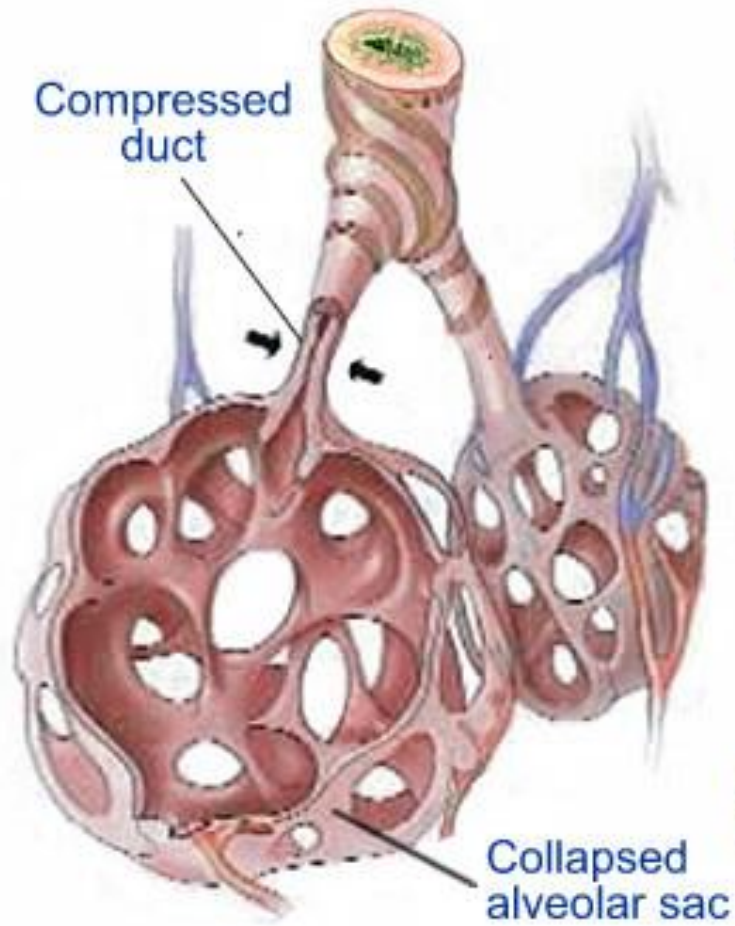
Krónikus obstruktív
tüdőbetegség



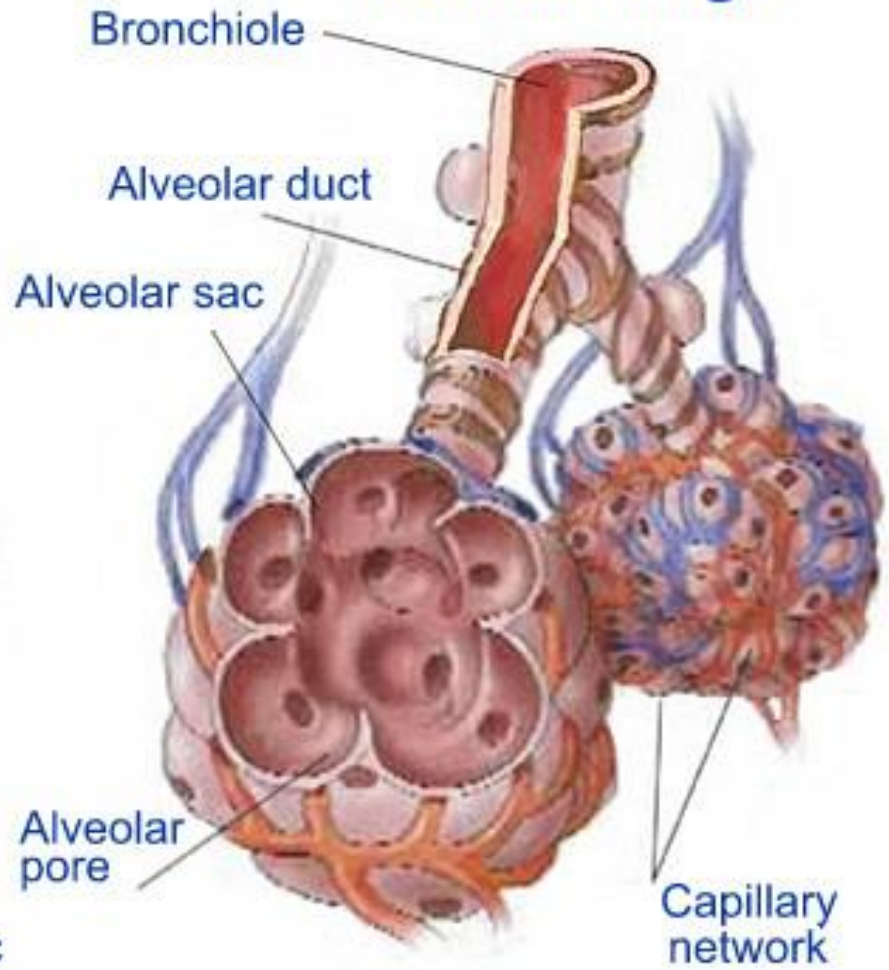
CIGARETTE SMOKING CAUSES ABOUT
80%-90% OF ALL
COPD CASES

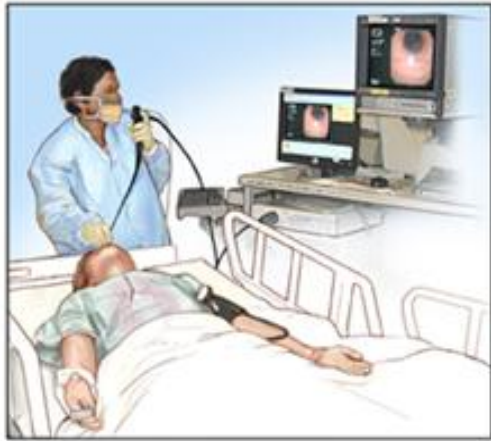


Emphysema



Normal lungs





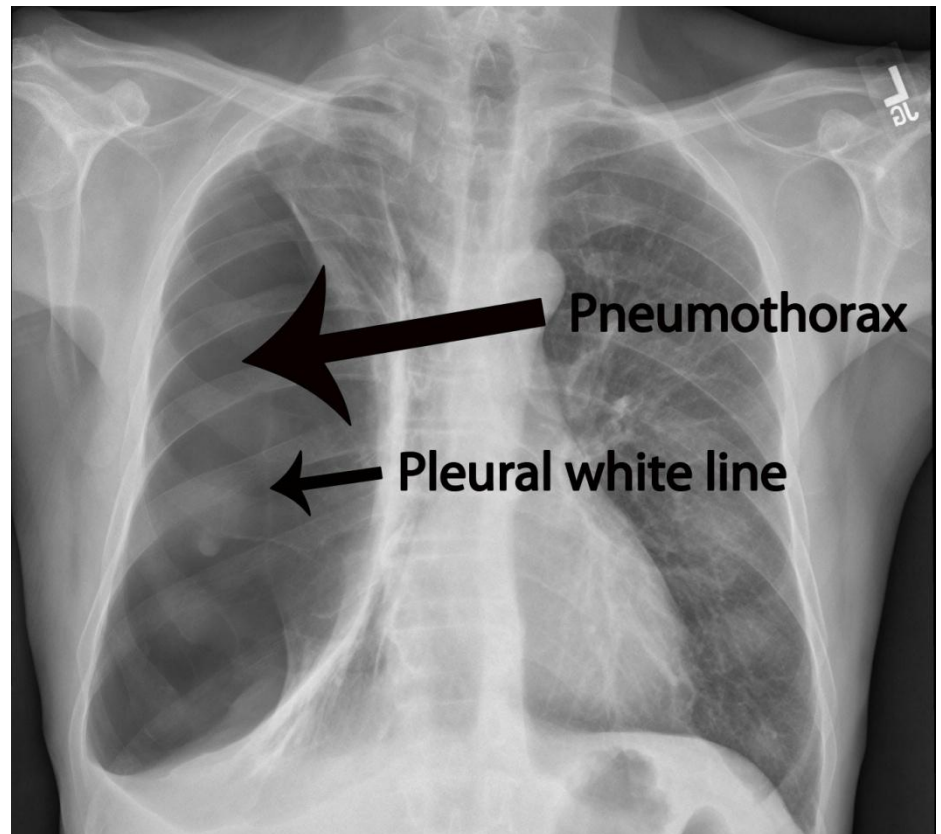
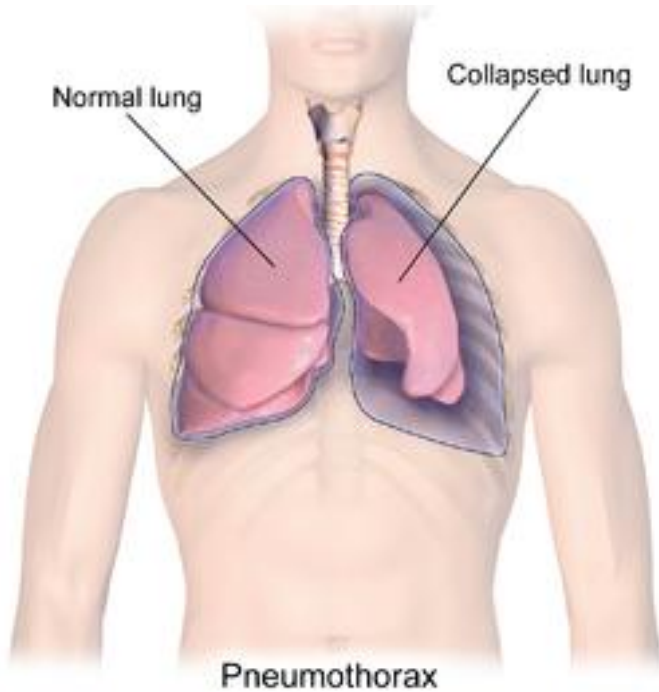
Bronchoscope

Trachea

Bronchi

Cancer

Pneumothorax (légmell)

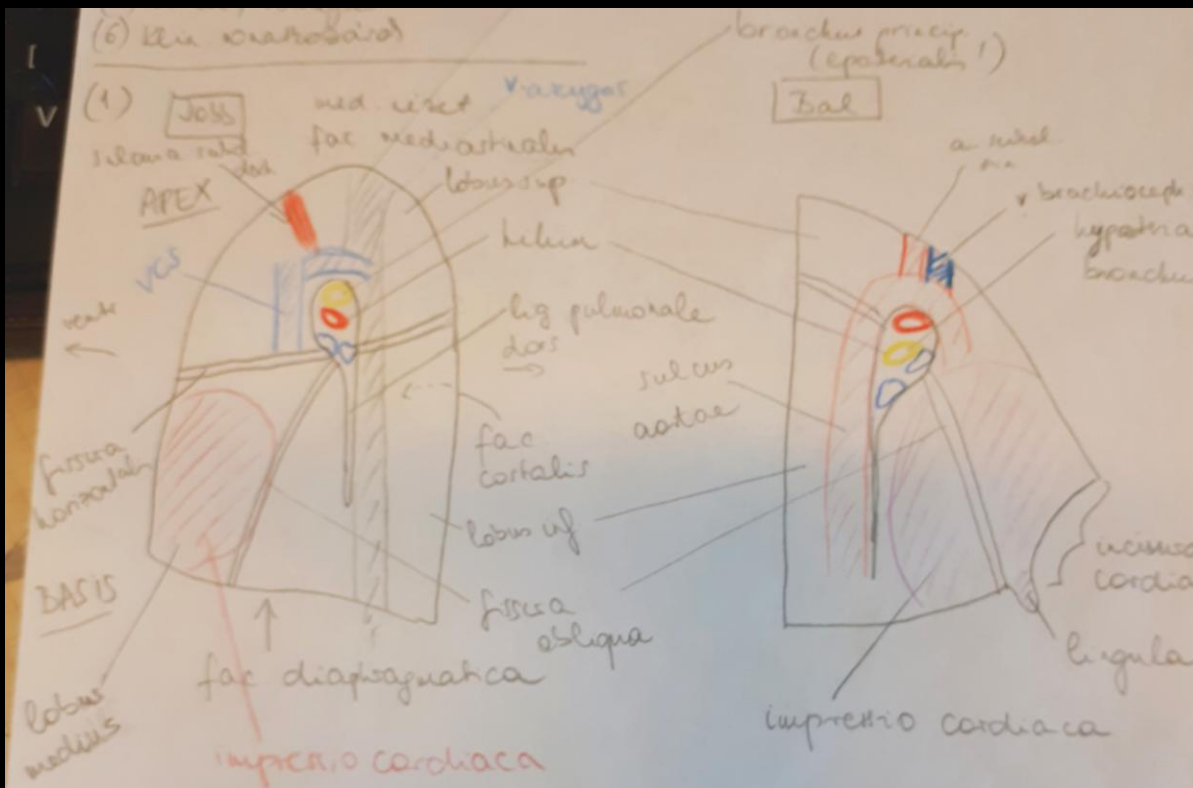


Vastüdő



A polio vakcina feltalálása előtt...





(3) Topográfia

felkötés nélkül - lapptalár vast. fontus (személ, él, hány, hány, hány, hány)



(4) Pleura & mediastinum

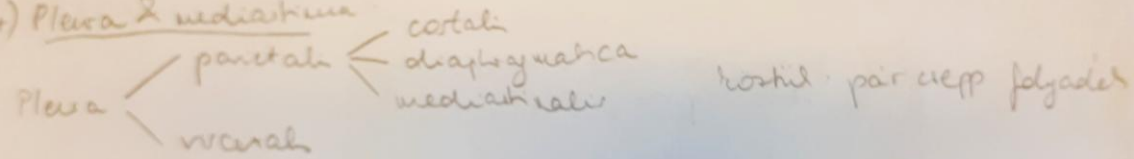
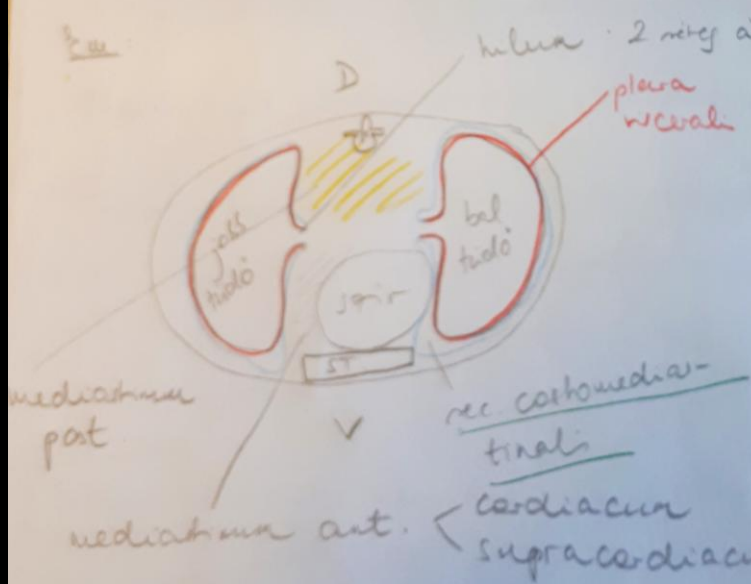


Fig.



PLEURASINUSOK (REC-d)

- ① Rec costodiaphragmatica = sive pleurocostalis
- ② Rec pleuromediastinalis
- ③ Rec costomediastinalis

Köszönöm a figyelmet!



For more information on lung cancer, keep smoking.