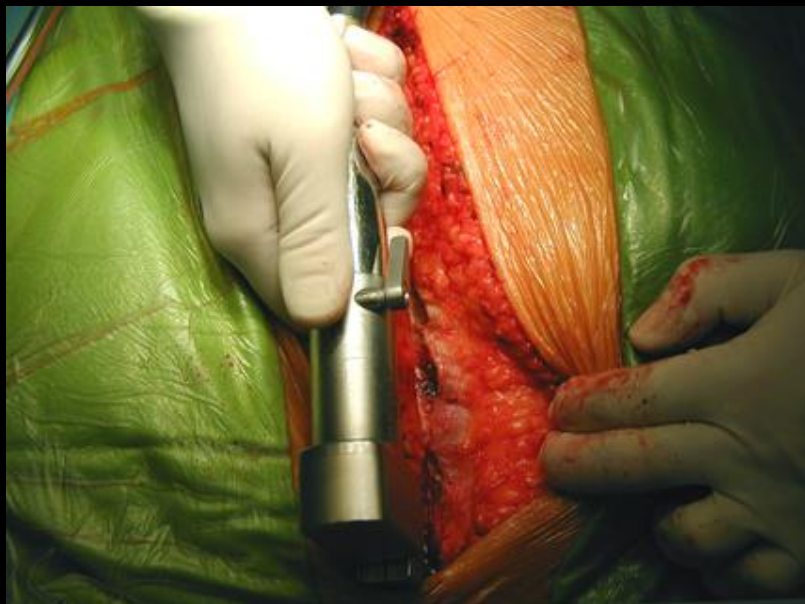
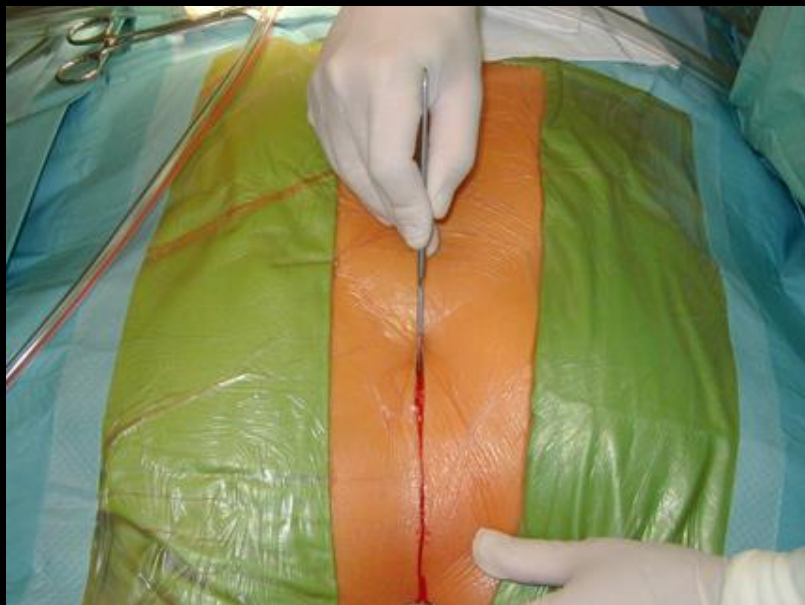


A szív külső leírása és üregei. A szívfal szerkezete, anulus fibrosus, myocardium és a szív billentyűi.

Ph.D., Dr. Lendvai Dávid
Anatómia, Szövet- és Fejlődéstan Intézet
2019.

- Dr. Ruttkay Tamás anyagából -





A szív felszínei

Facies sternocostalis:

→ Sternum, bordák

Facies diaphragmatica:

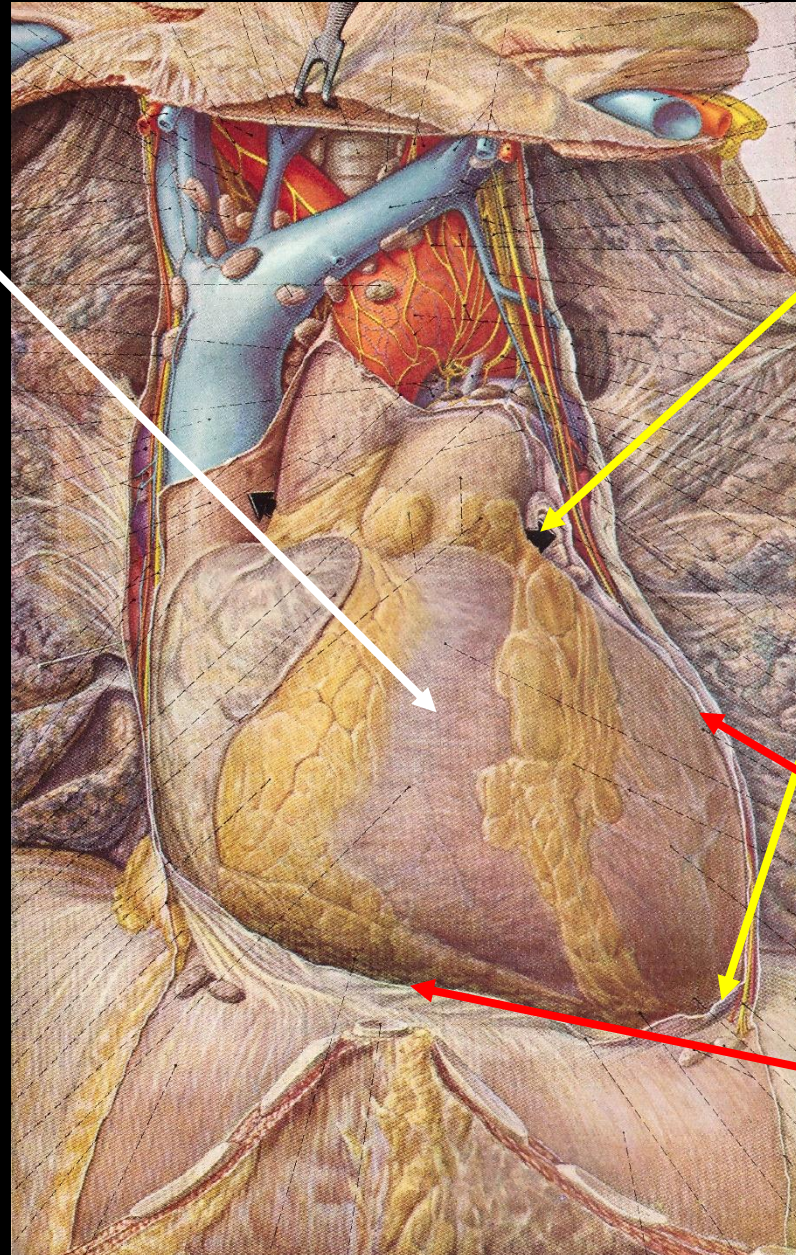
→ Rekesz

**Facies posterior /
mediastinalis:**

→ Mediastinum posterius

Facies pulmonalis:

→ Tüdő



Basis cordis

Apex cordis

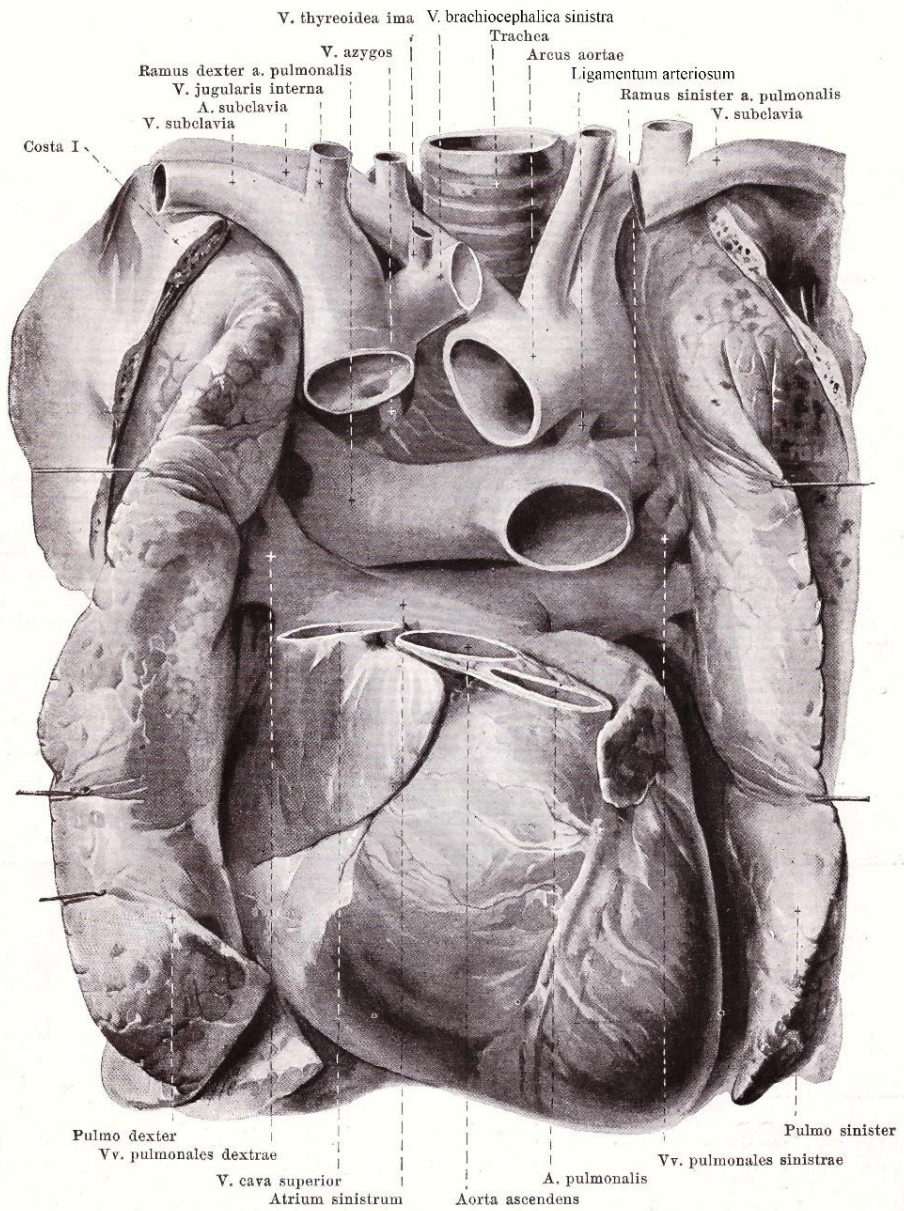
Margo obtusus / sinister:

→ „tompá” átmenet

Margo acutus / dexter:

→ „éles” átmenet

Vasa publica



Jobb szívfél:

Vena cava superior
Vena cava inferior

↓
Jobb pitvar
↓
Jobb kamra

↓
Truncus pulmonalis
↓
Arteria pulmonalis
- dextra
- sinistra

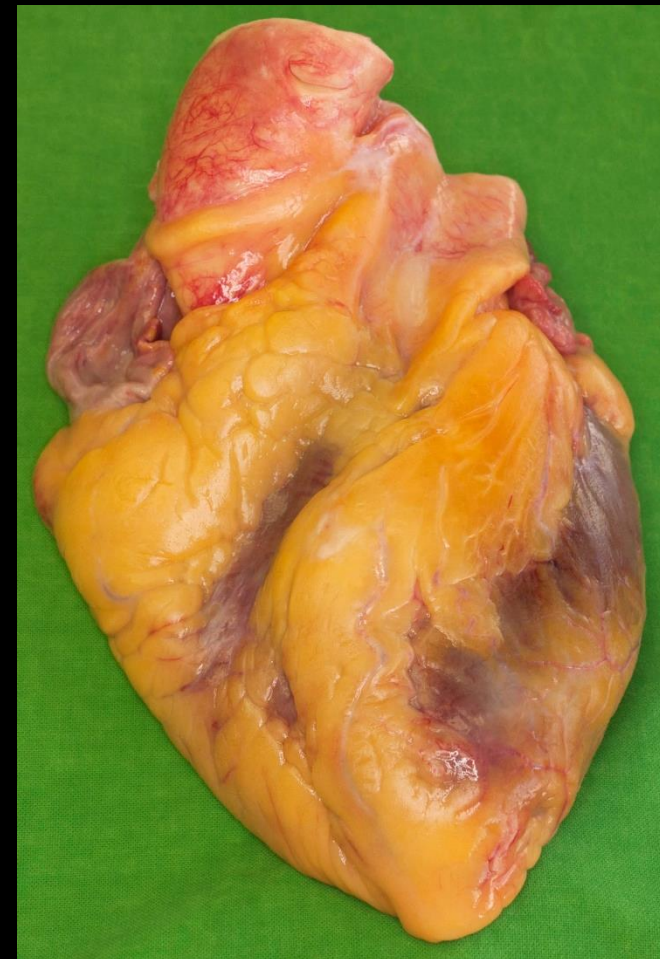
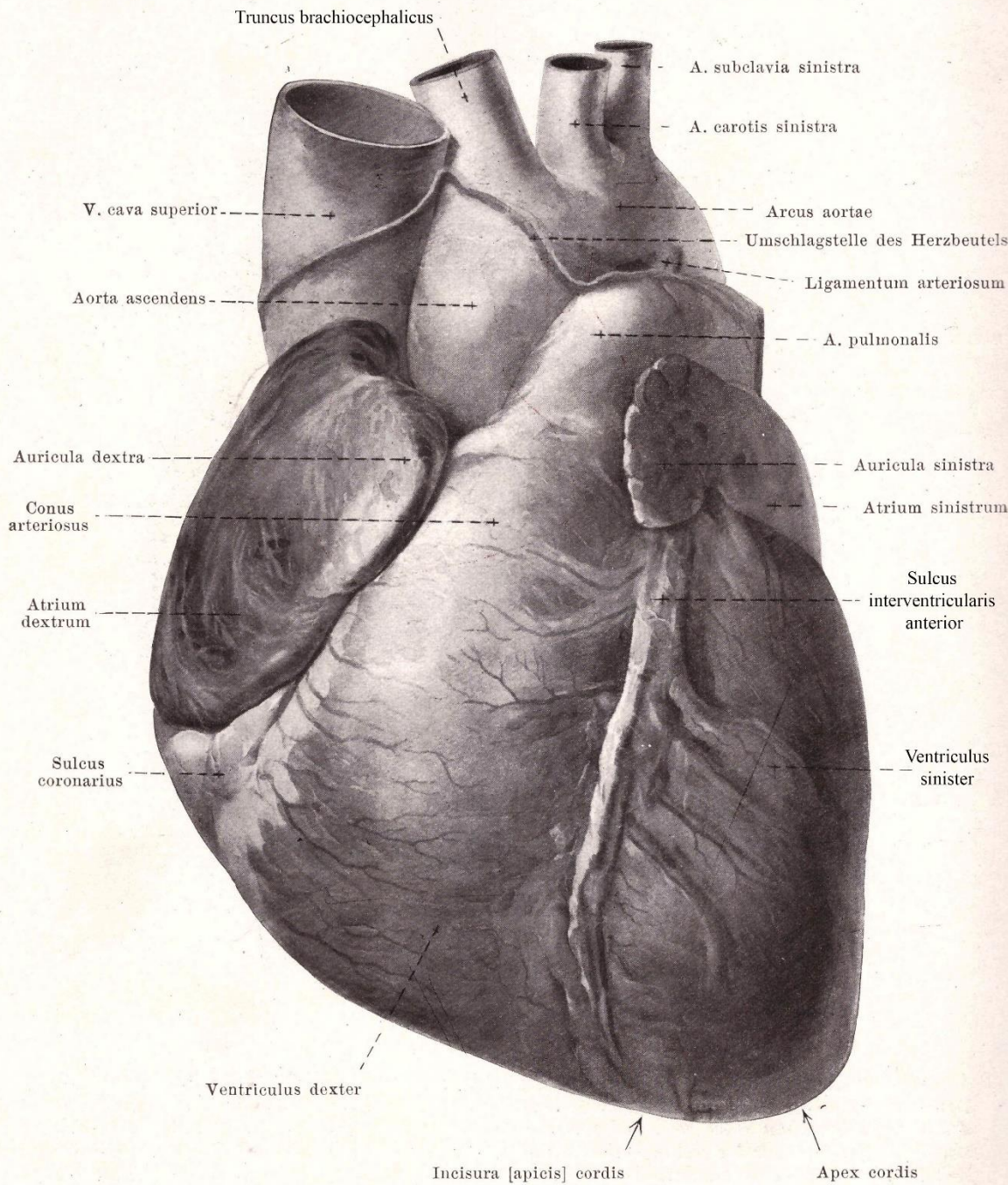
Bal szívfél:

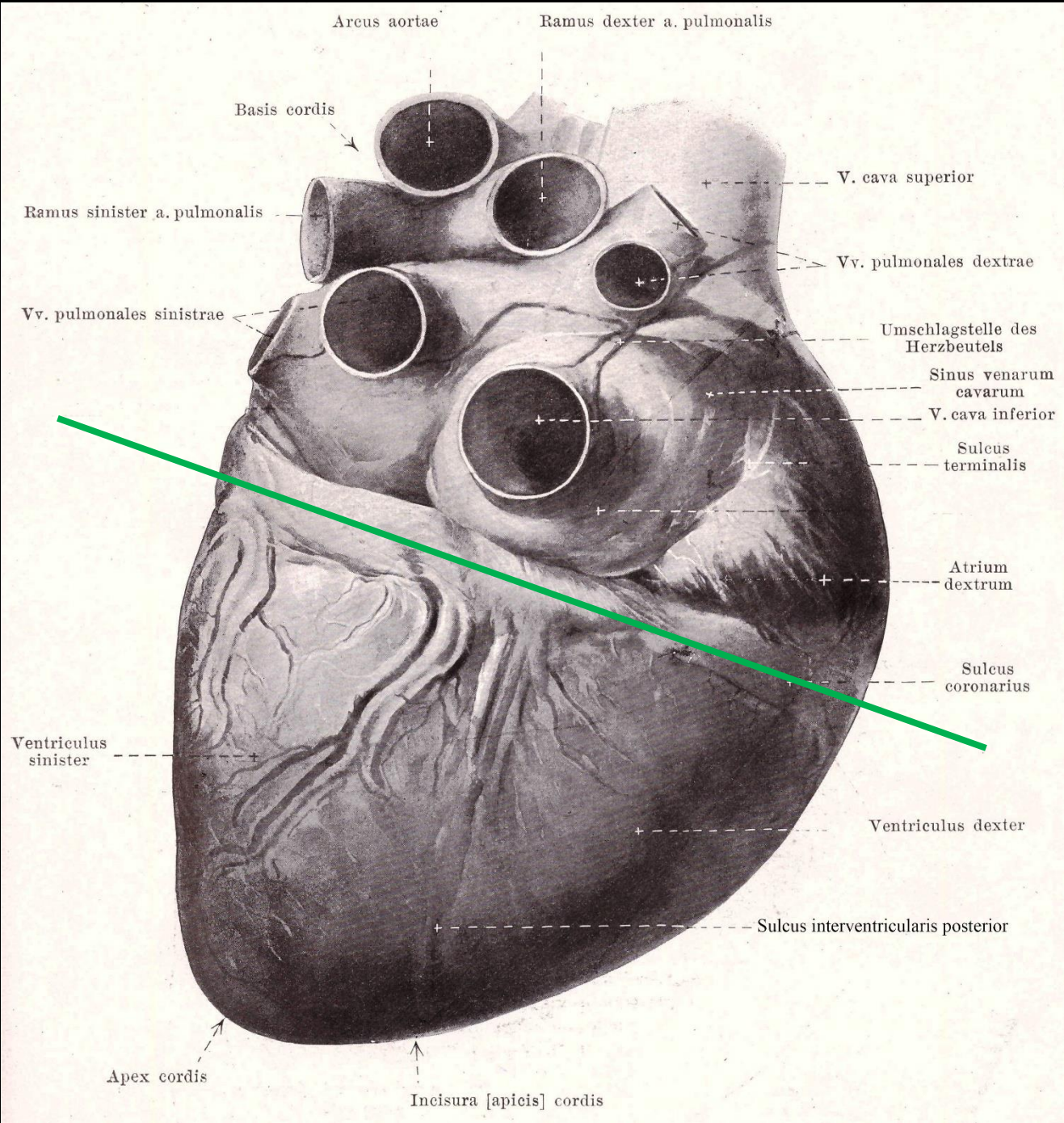
Venae pulmonales
- dextrae
- sinistrae

↓
Bal pitvar
↓
Bal kamra

↓
Aorta ascendens
↓
Arcus aortae
- Truncus
brachio-
cephalicus
- A. carotis
comm. sin.
- A. subclavia
sin.

Facies sternocostalis





**Facies
mediastinalis
+
diaphragmatica**

A szív üregei

Test
(dezoxigenizált vér)



Vena cava sup. + inf.



Atrium dextrum

- Sinus venarum cavarum
- Auricula dextra
(tényleges pitvar)



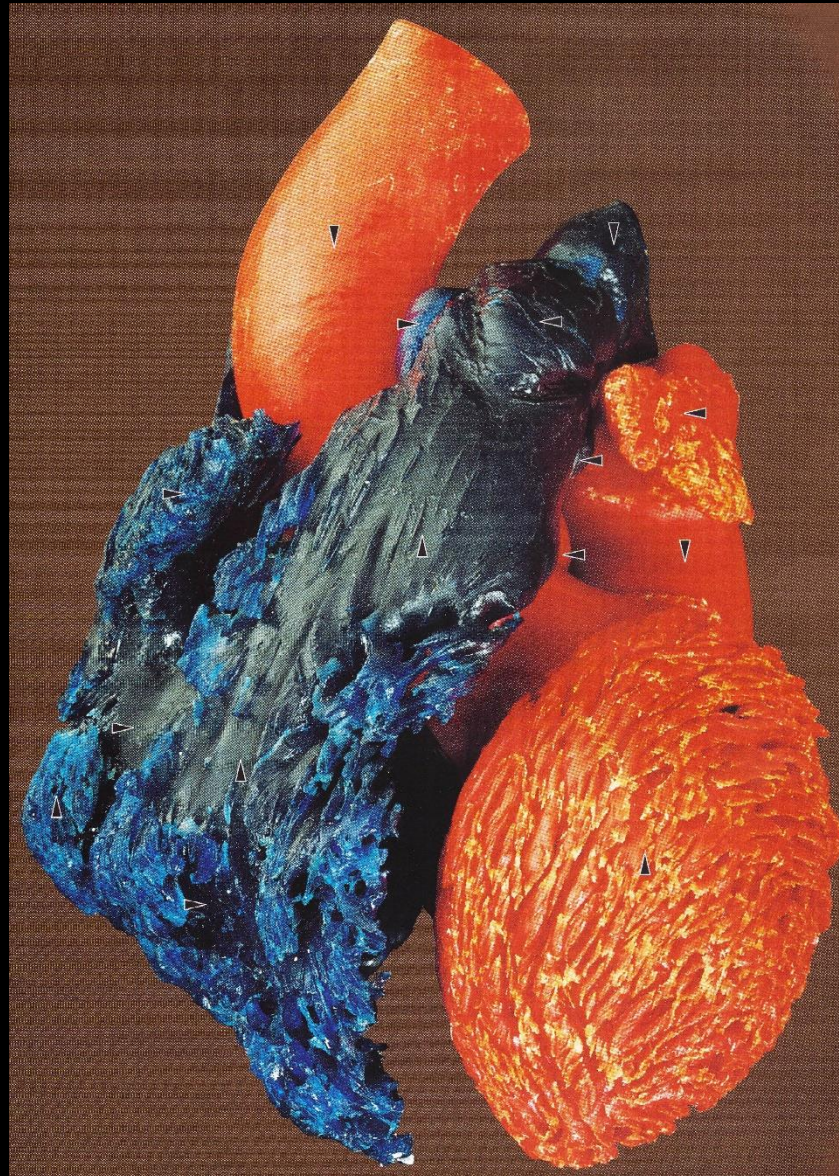
Ventriculus dexter



Truncus pulmonalis



Tüdő



Tüdő
(oxigenizált vér)



Venae pulmonales



Atrium sinistrum



Ventriculus sinister



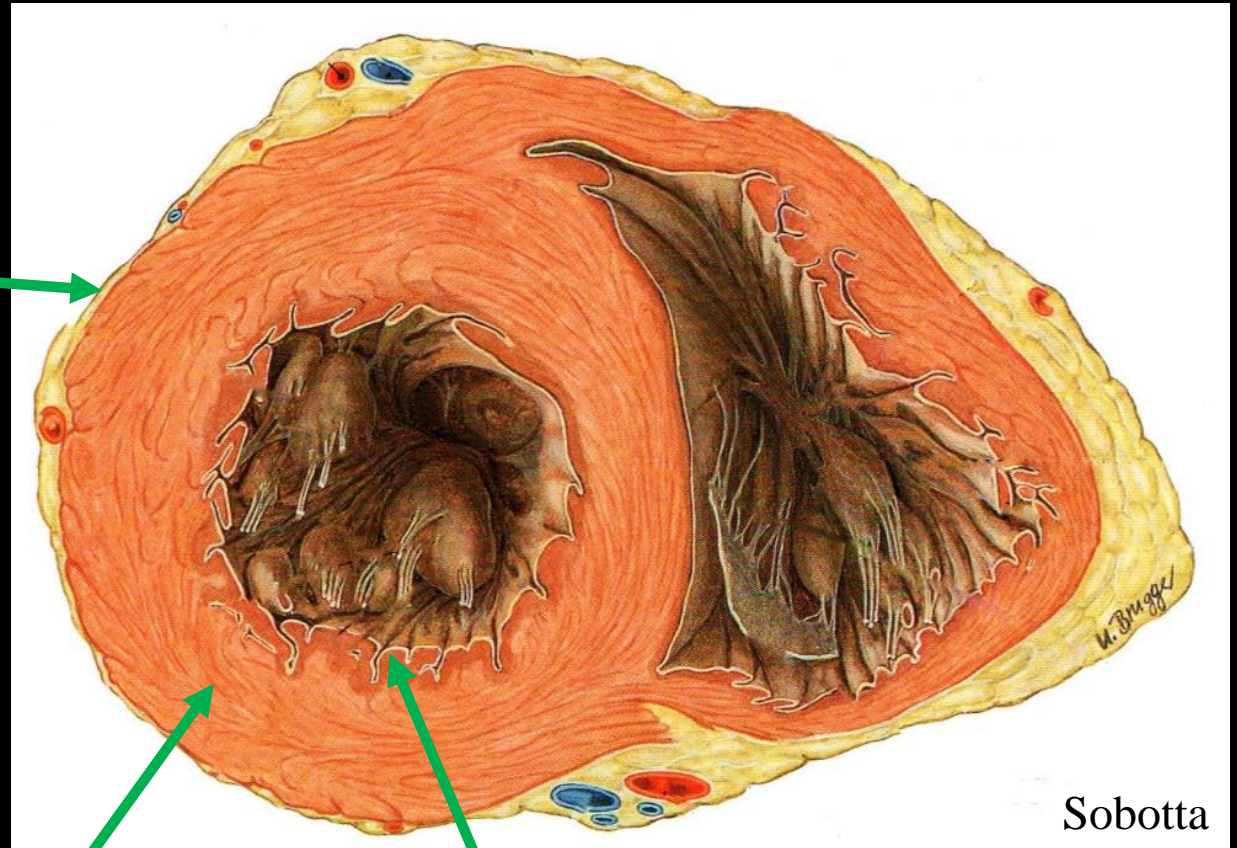
Aorta



Test

A szívfal

Epicardium
(*Pericardium
viscerale*)

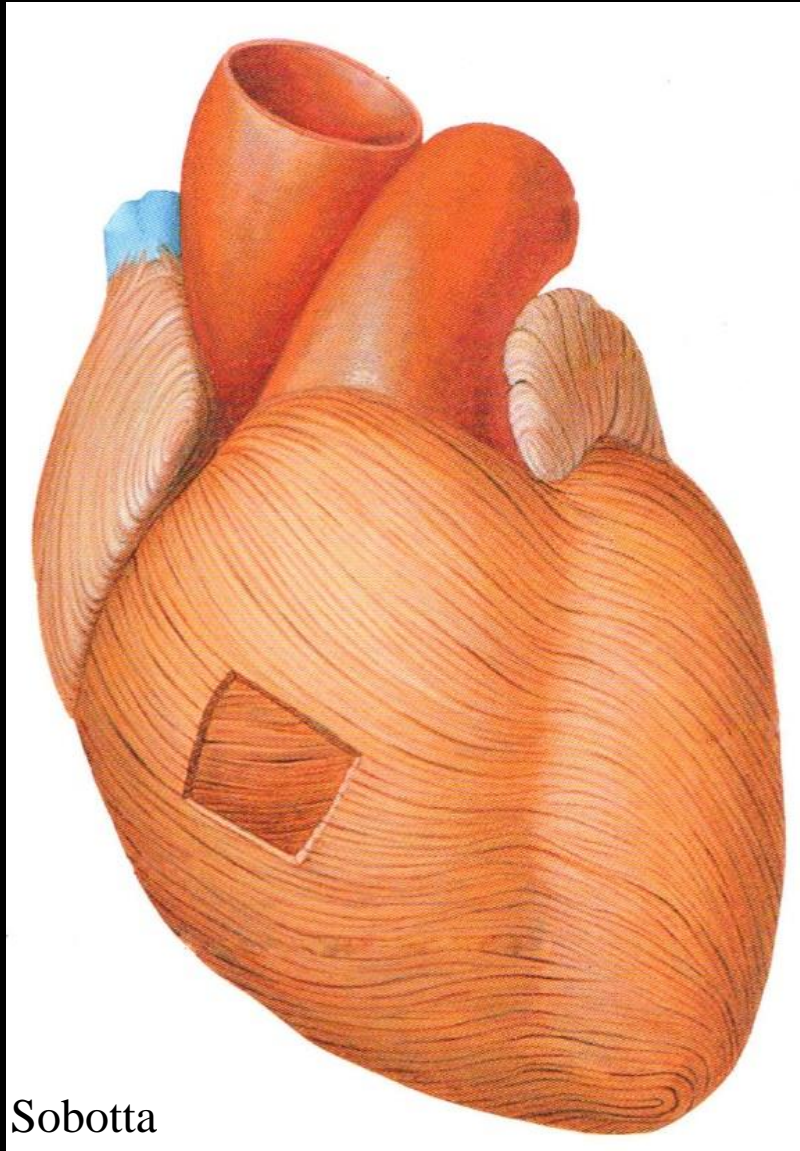


Sobotta

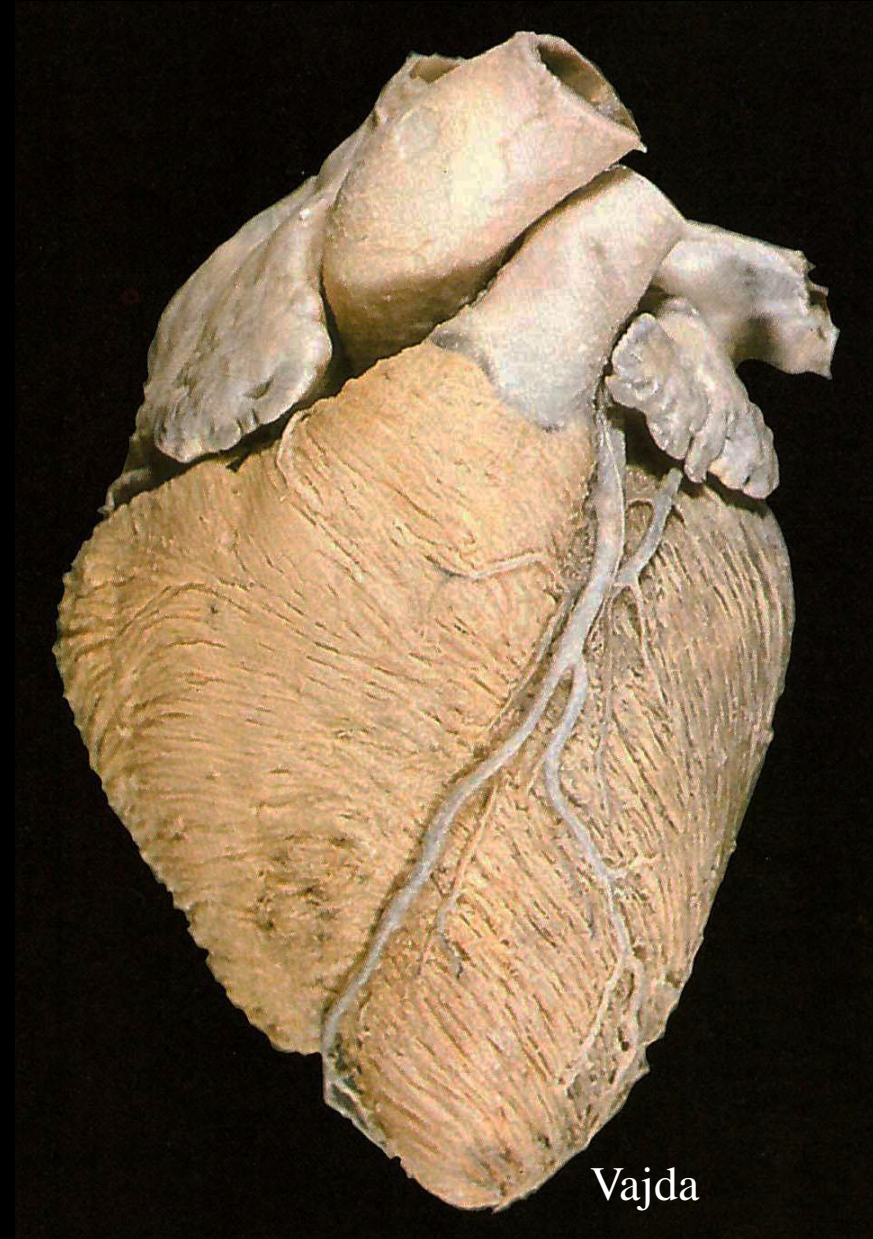
Myocardium

Endocardium

Myocardium

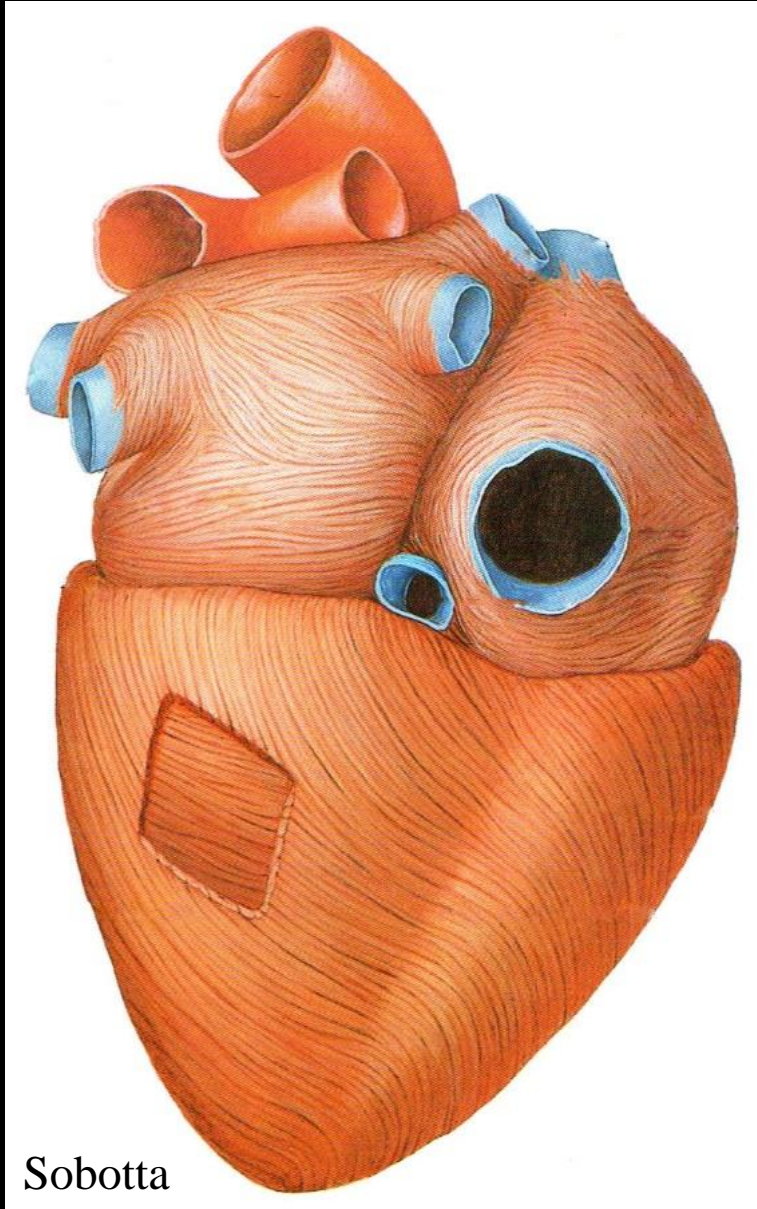


Sobotta

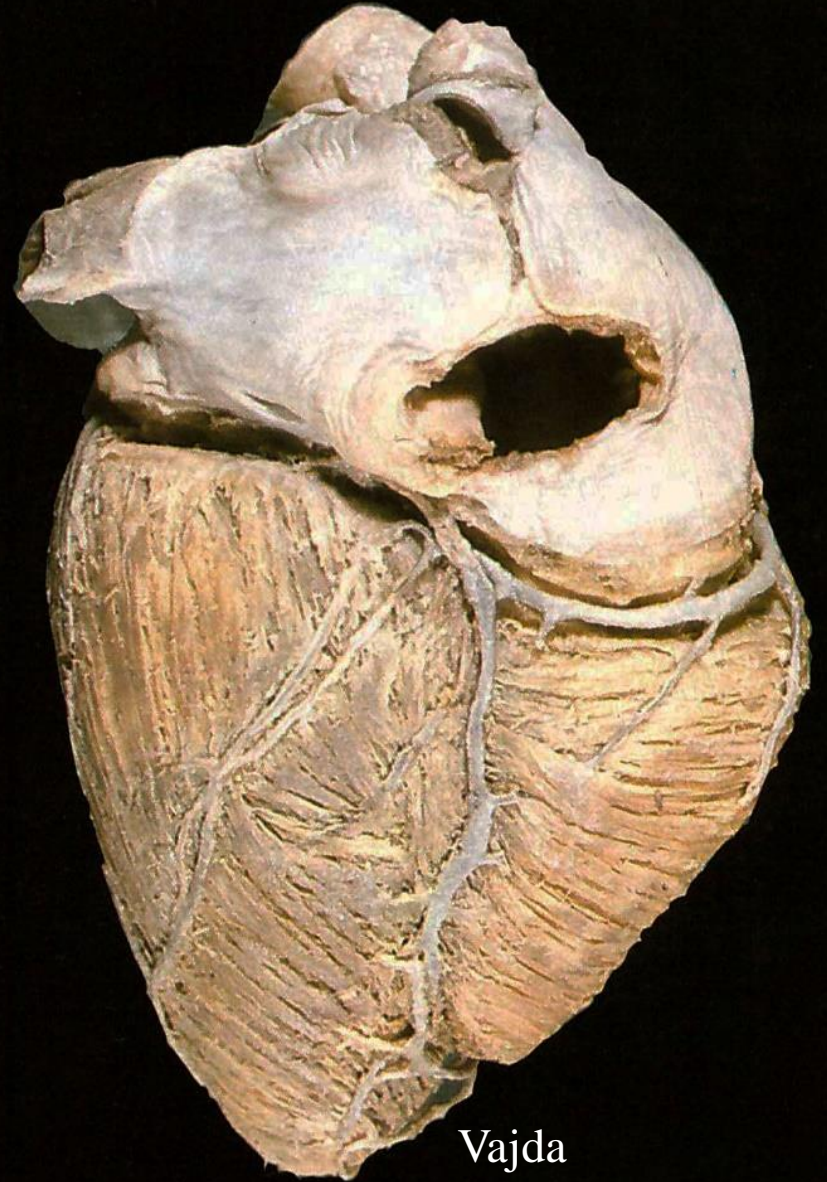


Vajda

Myocardium

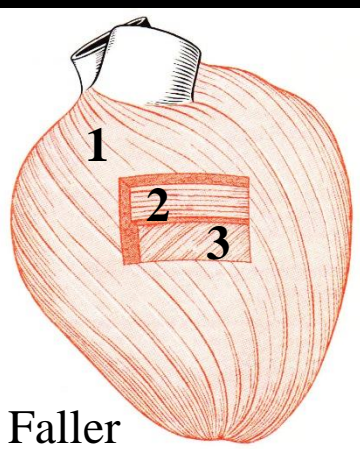


Sobotta

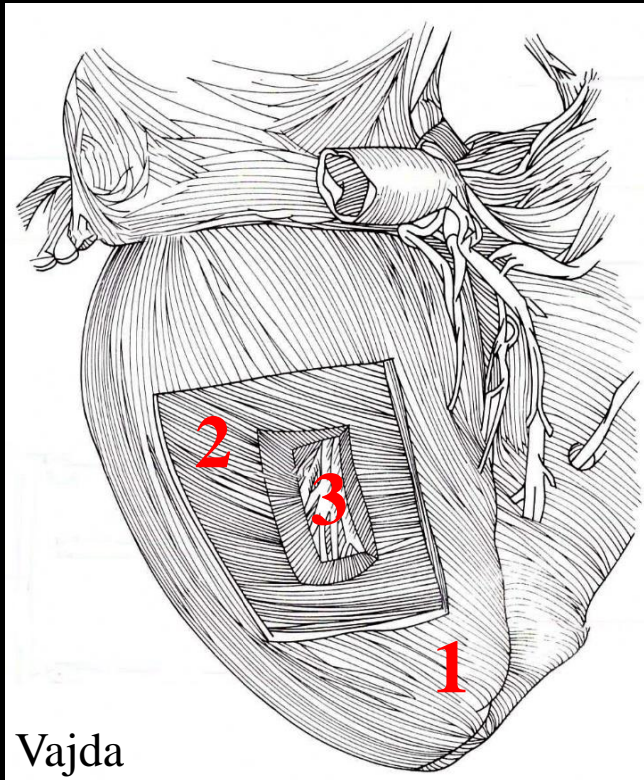


Vajda

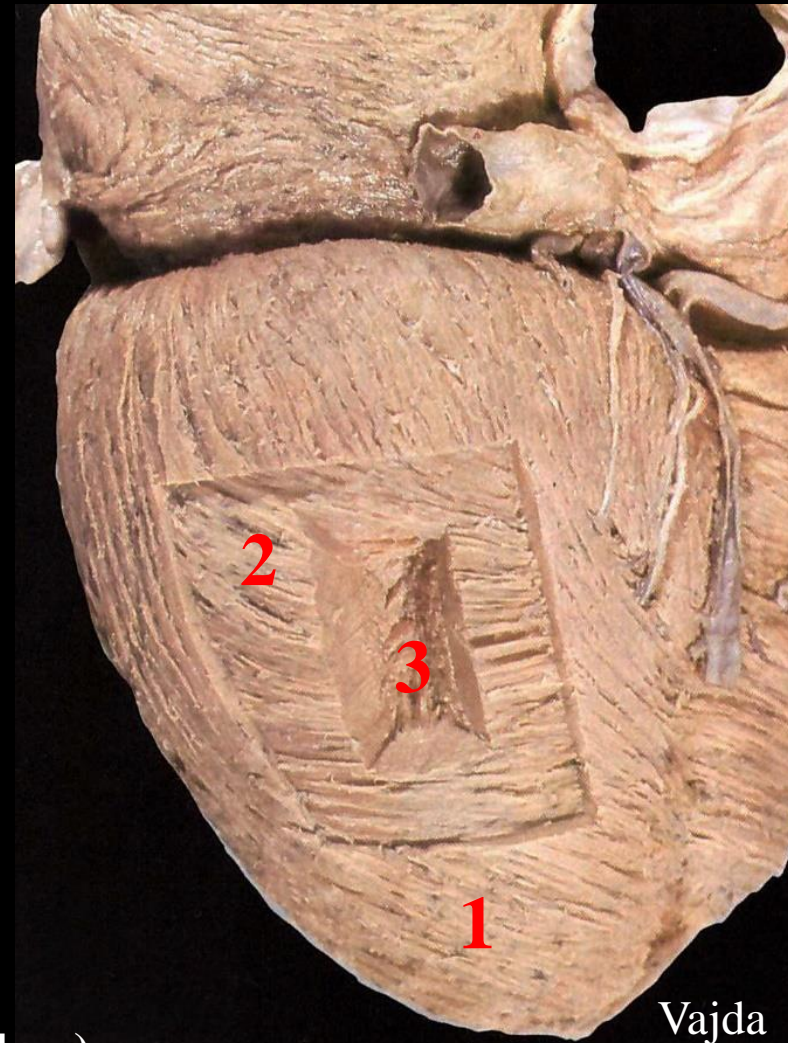
Ventricularis myocardium



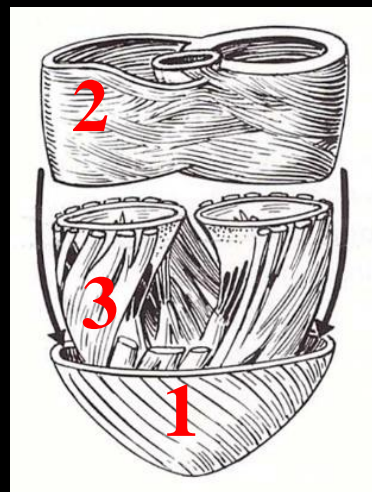
Faller



Vajda



Vajda



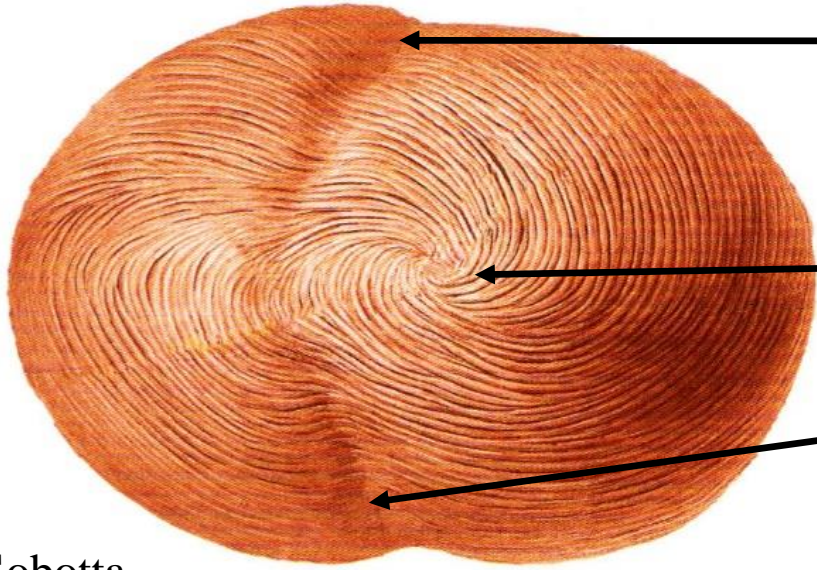
Szentágothai

1. Külső, ferde, spirális réteg (Stratum externum)

2. Középső, körkörös réteg (Stratum medium/circulare)

3. Belső, hosszanti réteg (Stratum internum)

Myocardium



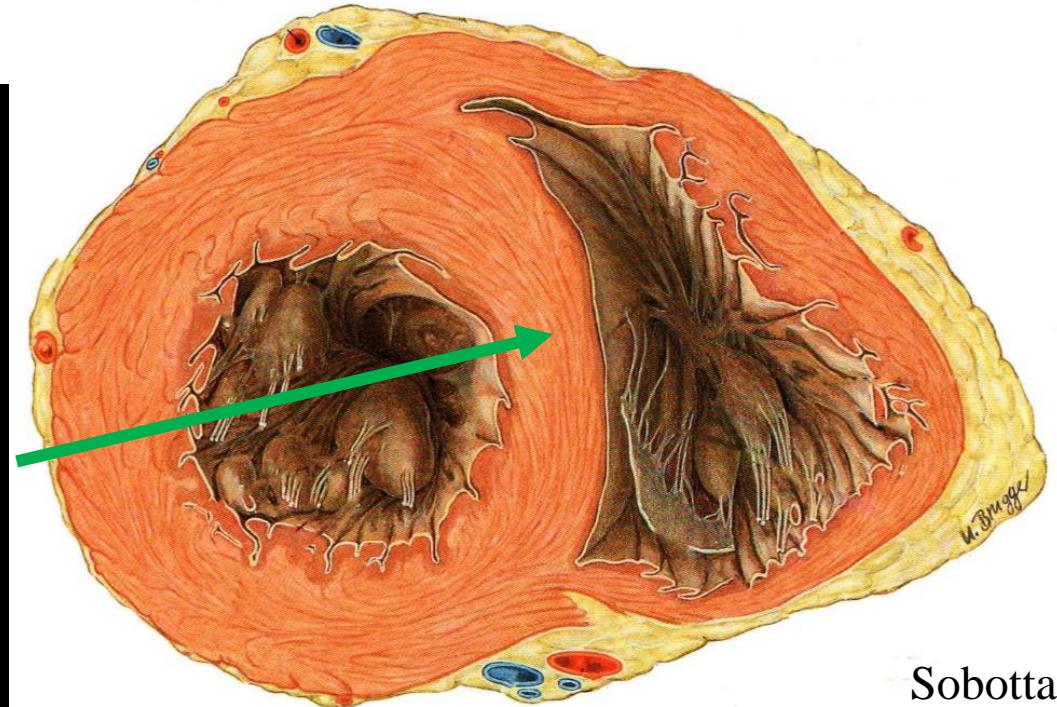
Sulcus interventricularis anterior

Vortex cordis

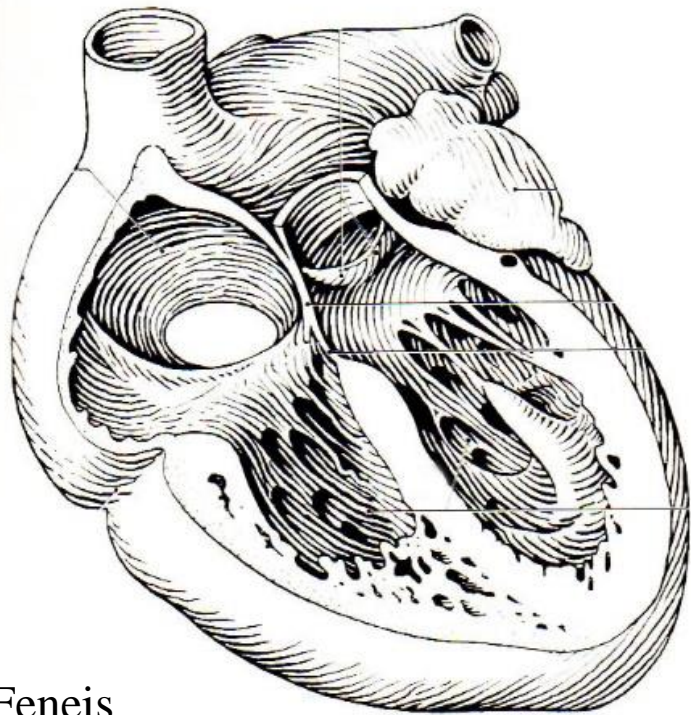
Sulcus interventricularis posterior

Sobotta

Septum interventriculare



Sobotta



Feneis

Septum interventriculare



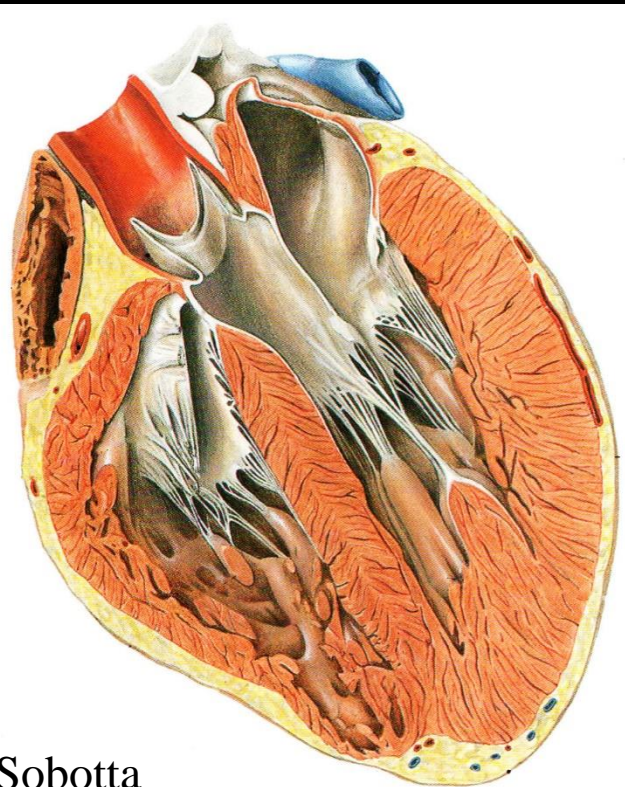
Berdajs

Septum atrioventriculare

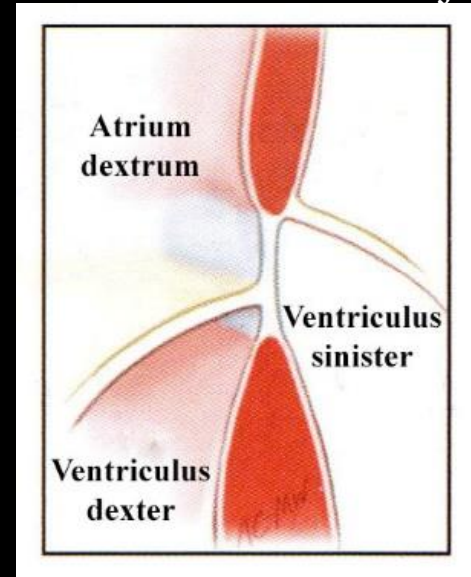
Septum interventriculare:

Pars membranacea

Pars muscularis

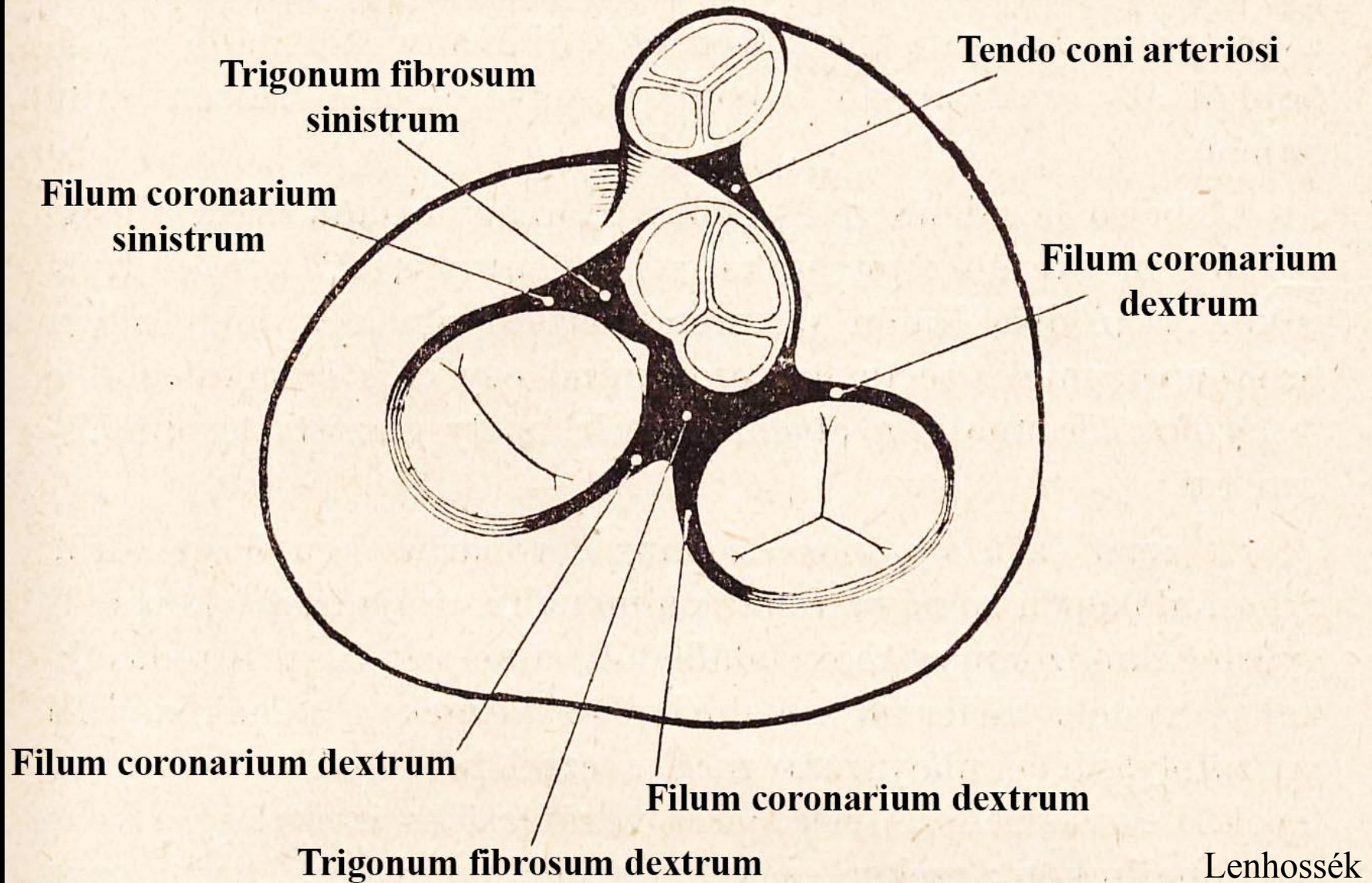


Sobotta



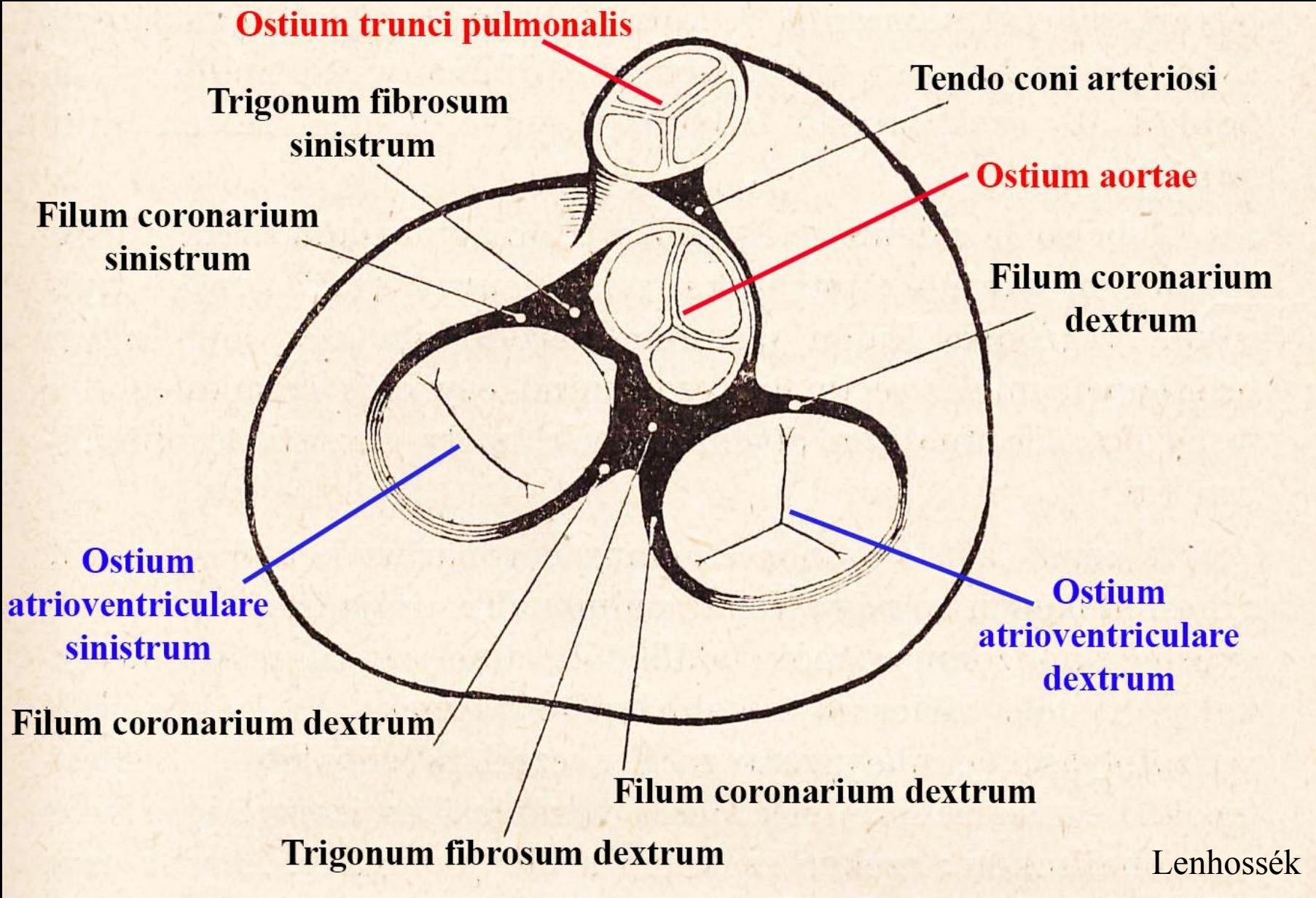
Carpentier

Anulus fibrosus



Lenhossék

Anulus fibrosus



Szívbillentyűk

Vitorlás billentyűk:

→ vénás szájadékok

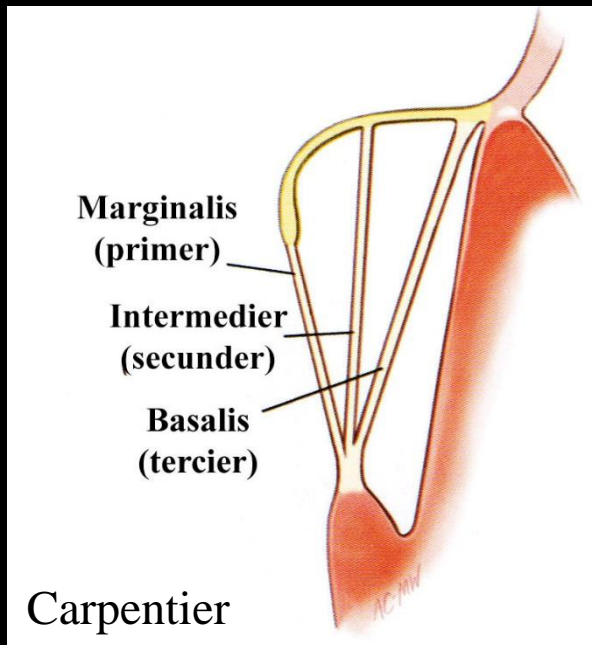
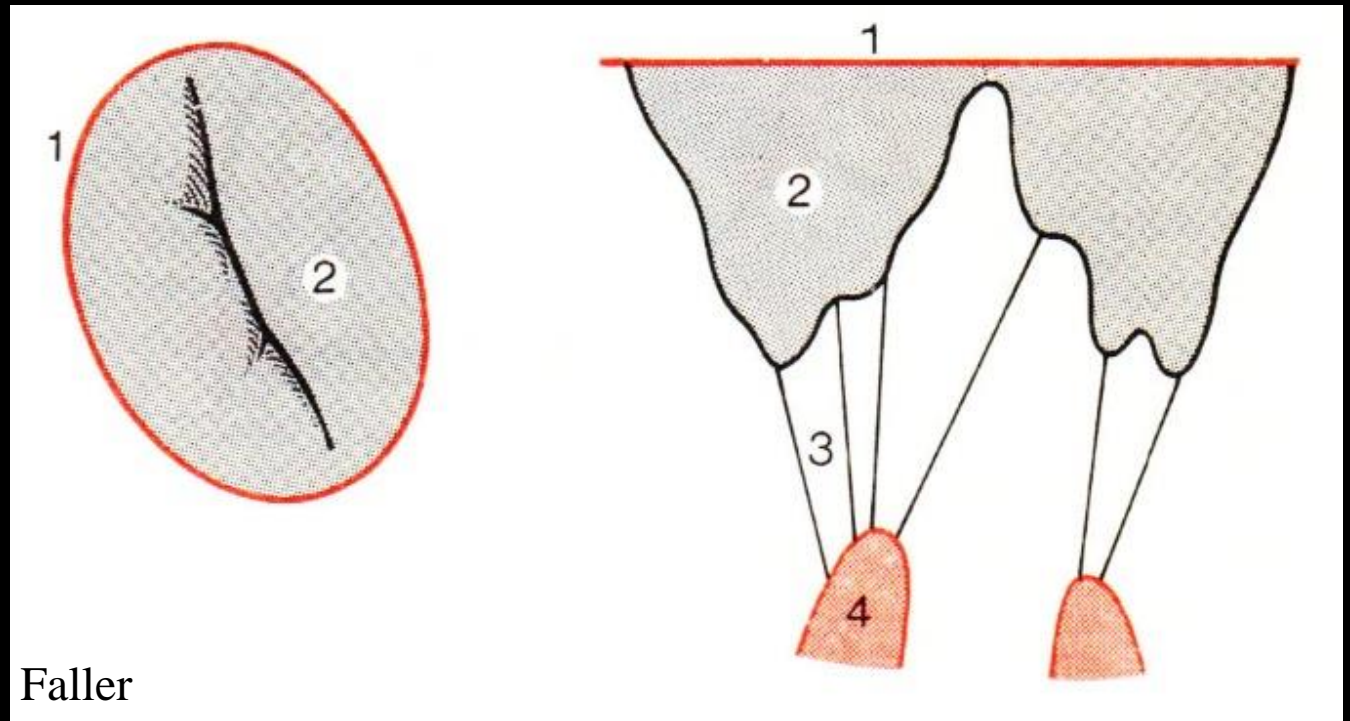
- Valva atrioventricularis dextra, Valva tricuspidalis
- Valva atrioventricularis sinistra, Valva bicuspidalis, Valva mitralis

Zsebes/Semilunaris billentyűk:

→ artériás szájadékok

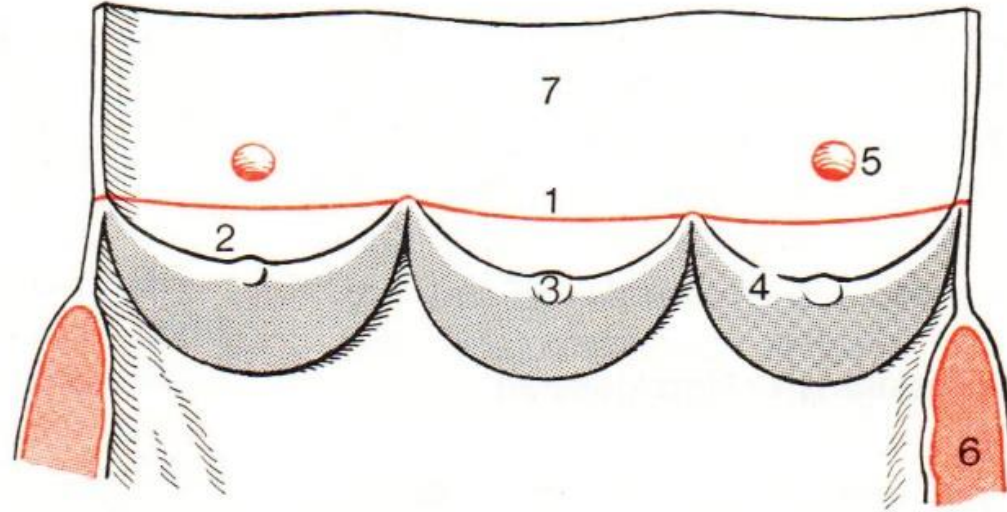
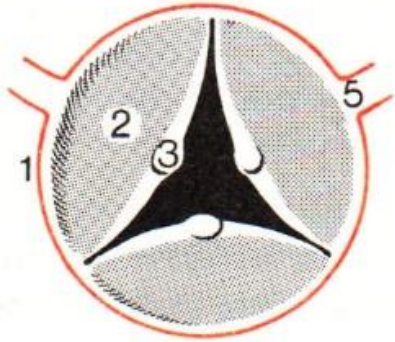
- Valva trunci pulmonalis
- Valva aortae

A vitorlás billentyűk ált. felépítése

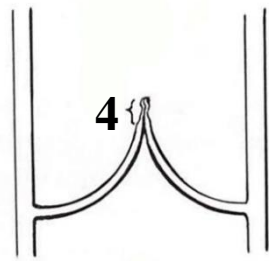
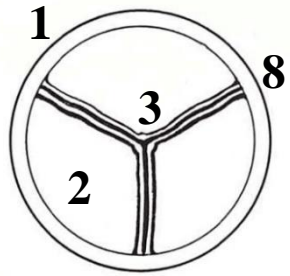


1. Anulus fibrosus (fibrosus gyűrű)
2. Cuspis (vitorla)
3. Chordae tendineae (ínhúrok)
4. Musculus papillaris (Papillaris izom)

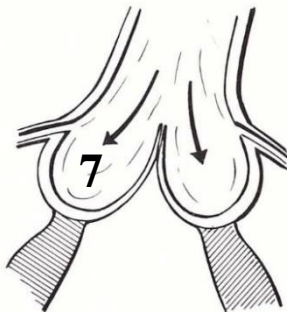
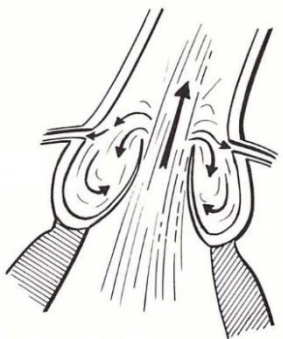
A zsebes billentyűk ált. felépítése



Faller

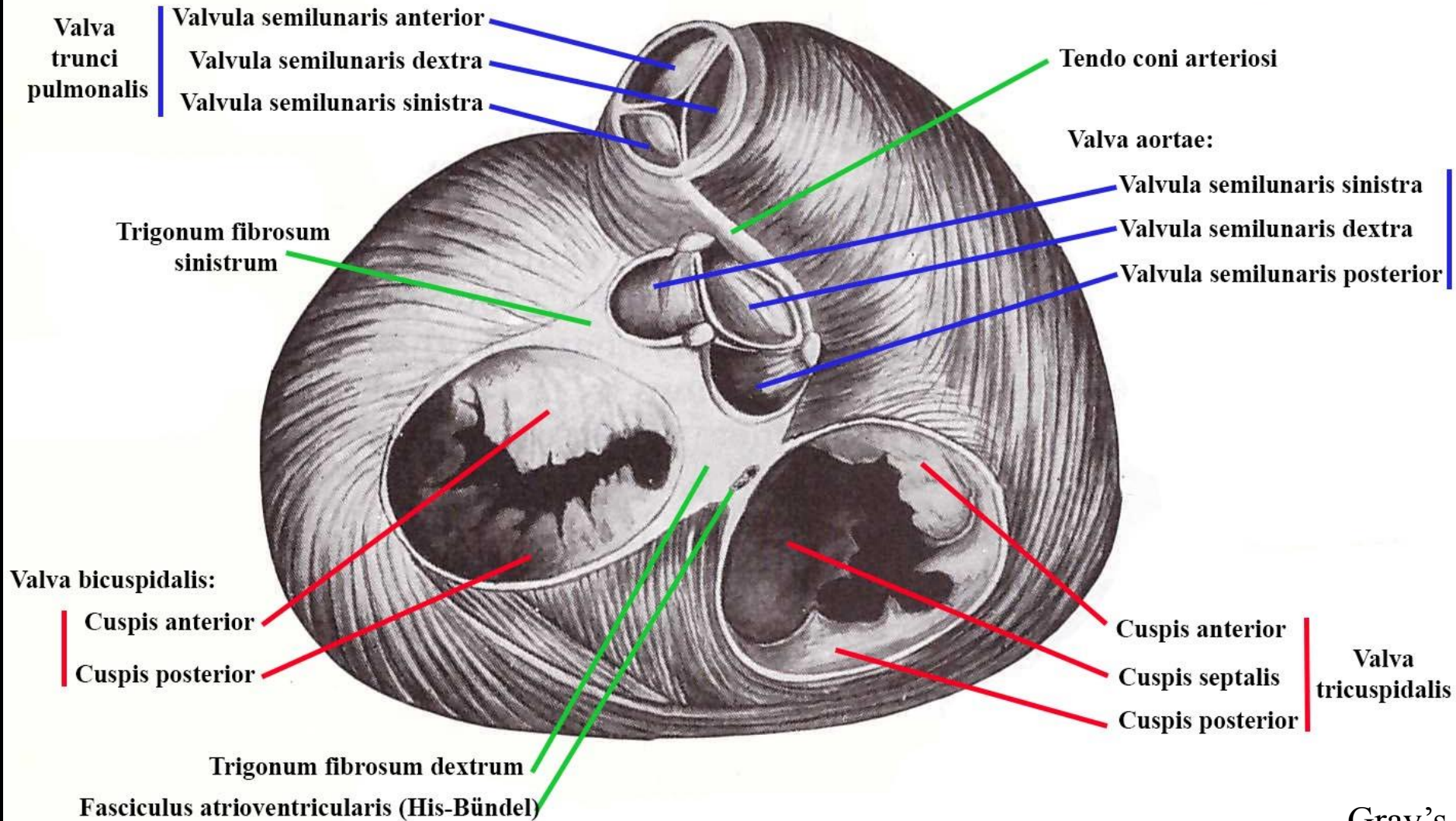


Szentágothai

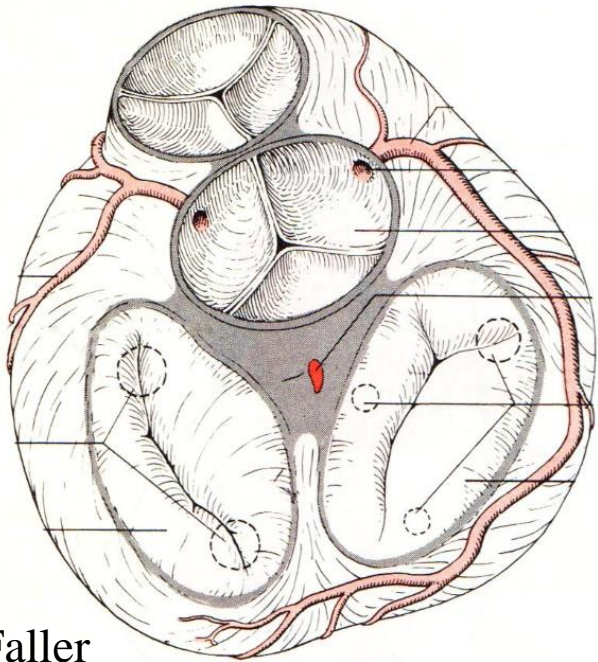


1. Anulus fibrosus
2. Valvula semilunaris: *Pars flaccida*
Pars tensa
3. Nodulus valvulae semilunaris
4. Lunula valvulae semilunaris
5. Arteria coronaria
6. Kamra fal
7. Sinus aortae
8. Commissura valvulae semilunaris

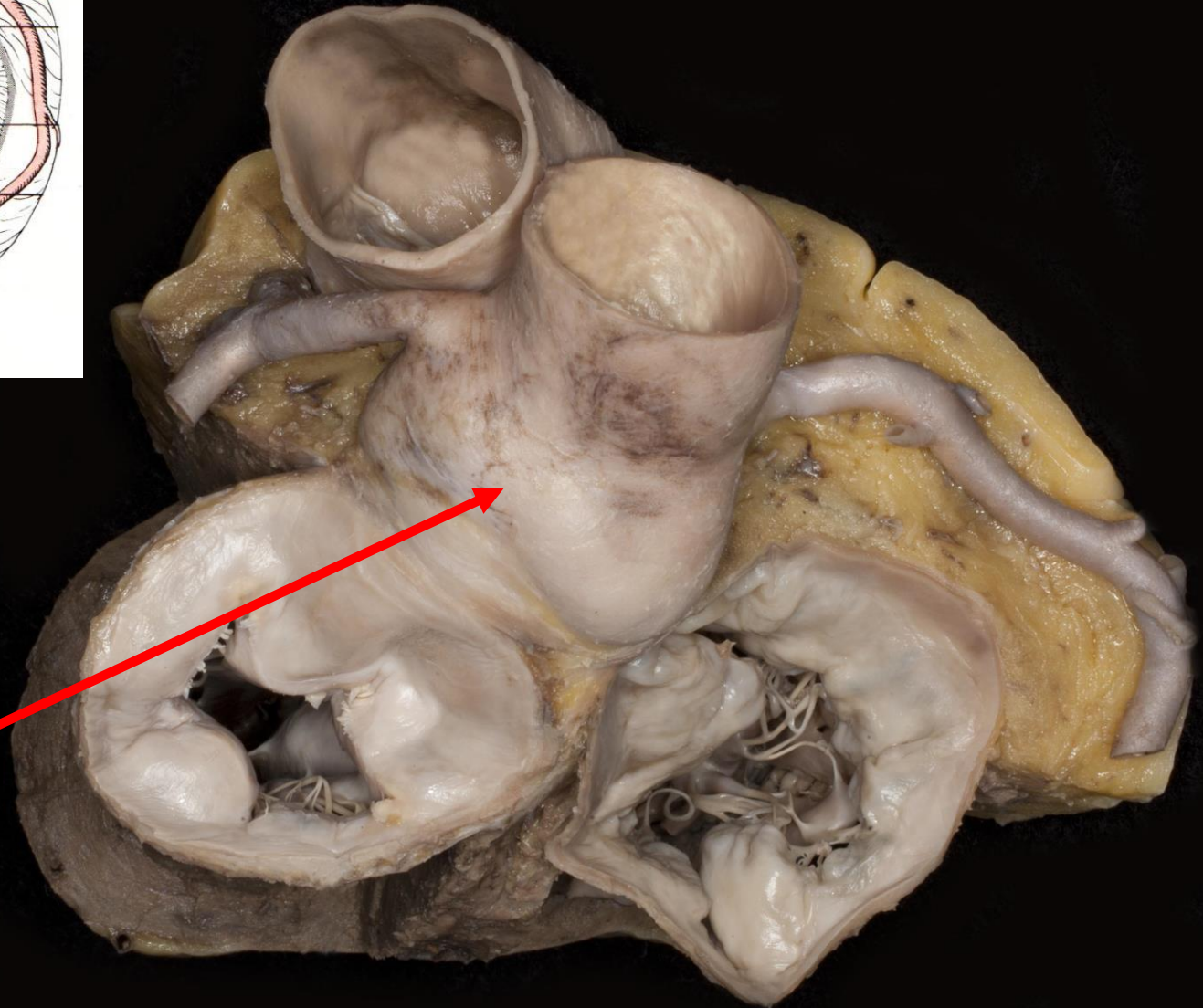
Szívbillentyűk



Szívbillentyűk



Faller



Bulbus aortae

Valva aortae

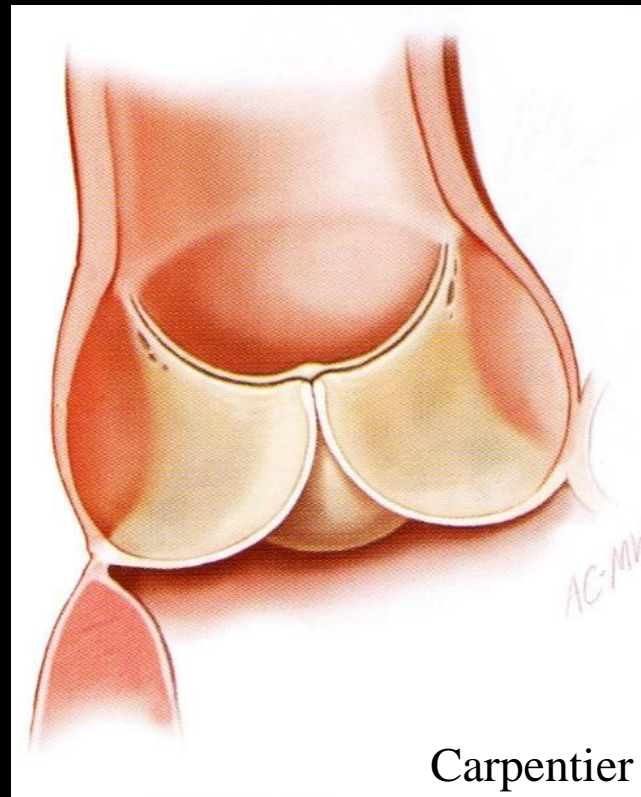
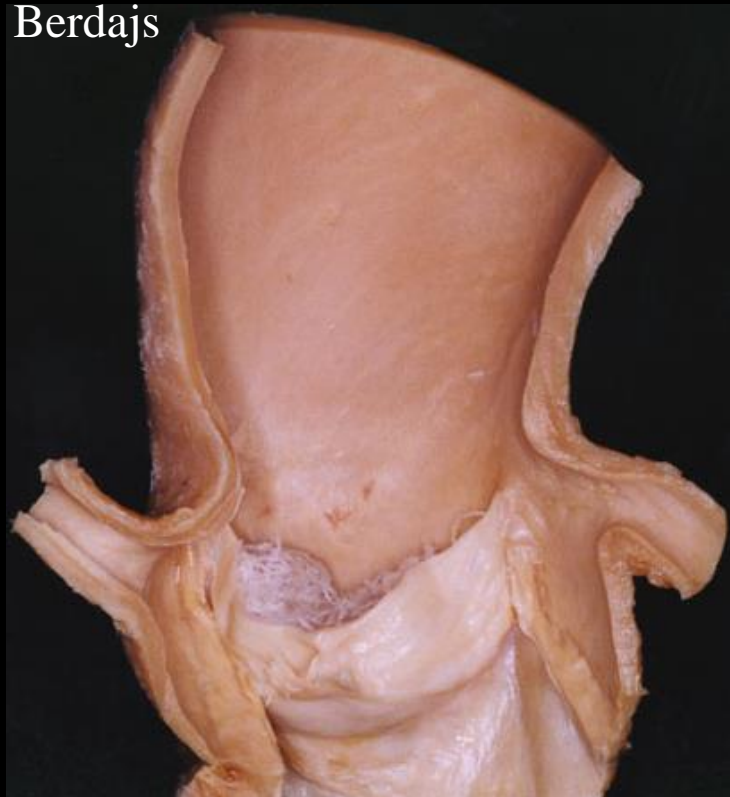


Valvula semilunaris dextra
(*Valvula coronaria dextra*)

Valvula semilunaris sinistra
(*Valvula coronaria sinistra*)

Valvula semilunaris posterior
(*Valvula non coronaria*)

Berdajs

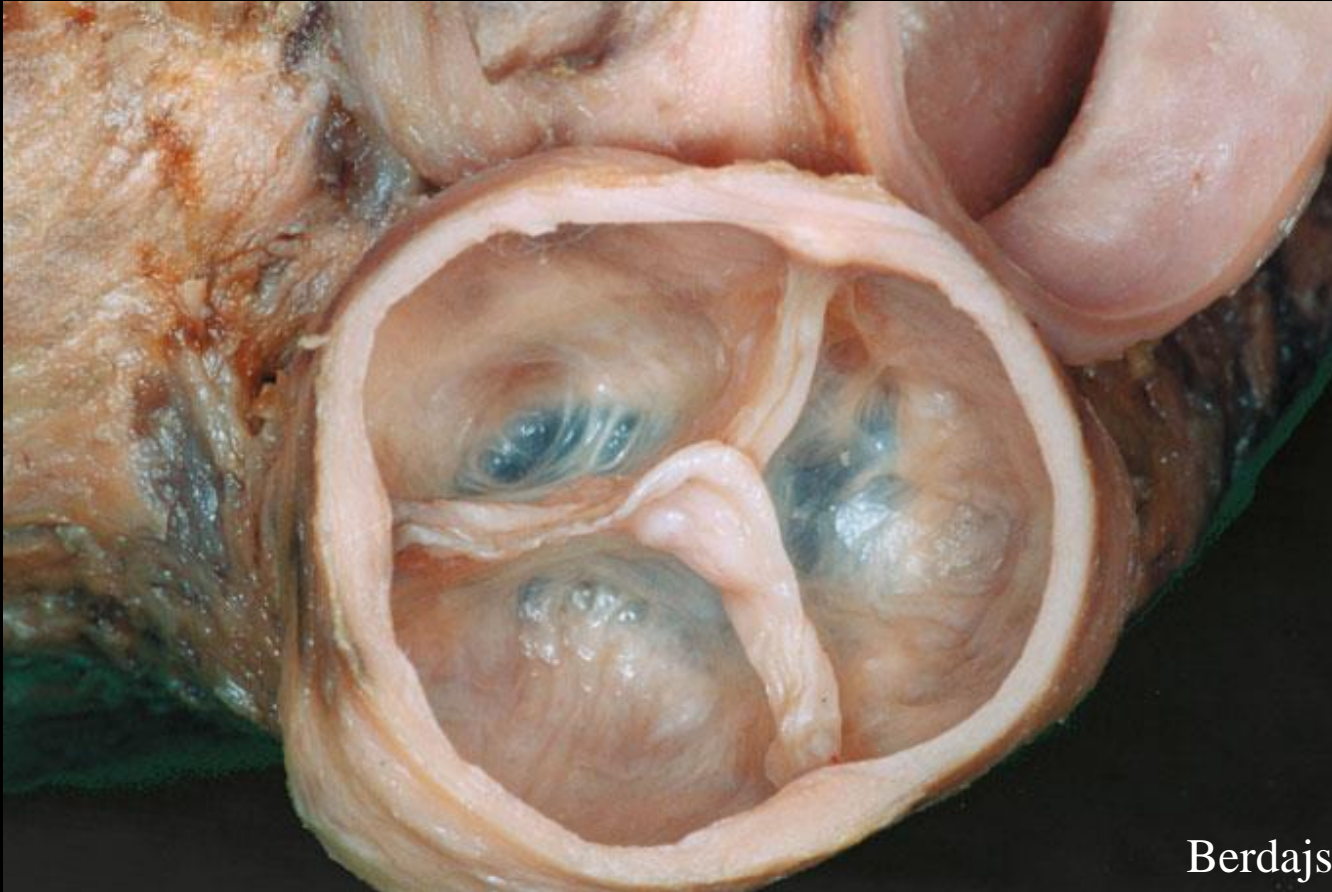


Sinus aortae
(**Valsalva**)

Bulbus
aortae

Carpentier

Valva trunci pulmonalis



Valvula semilunaris dextra

Valvula semilunaris sinistra

Valvula semilunaris anterior

Valva mitralis

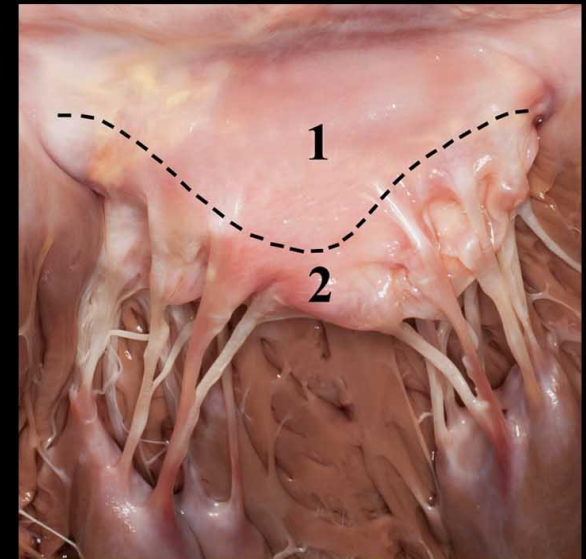
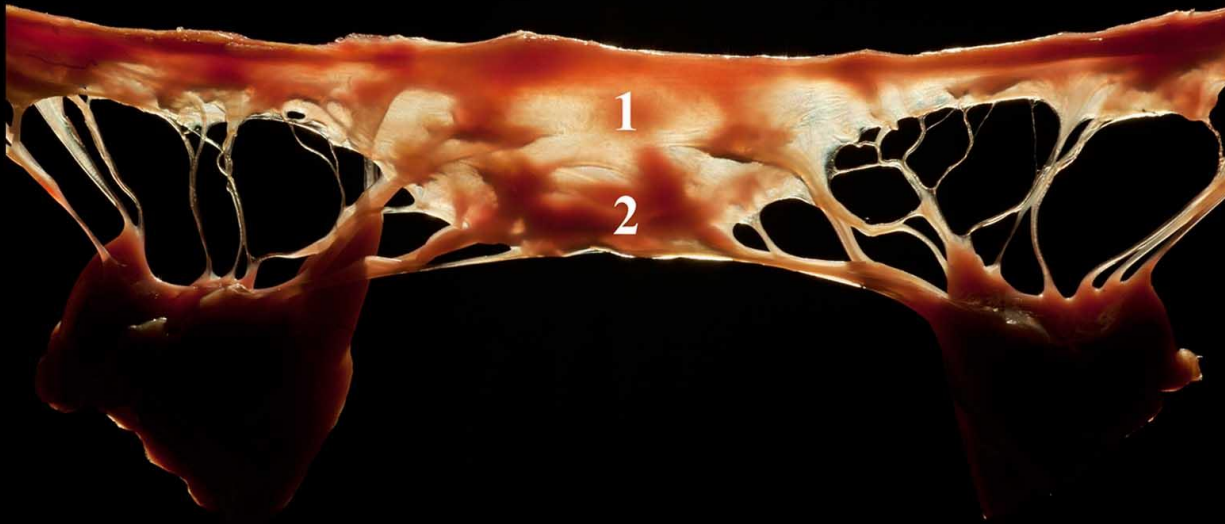
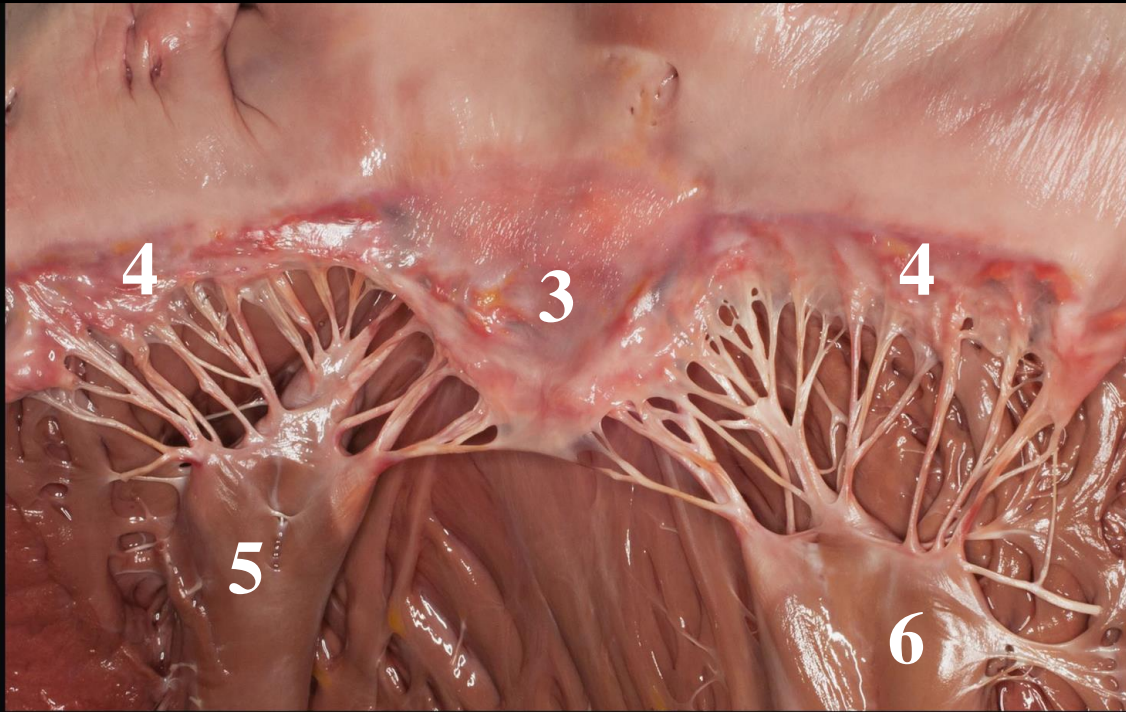
3. Cuspis anterior

4. Cuspis posterior

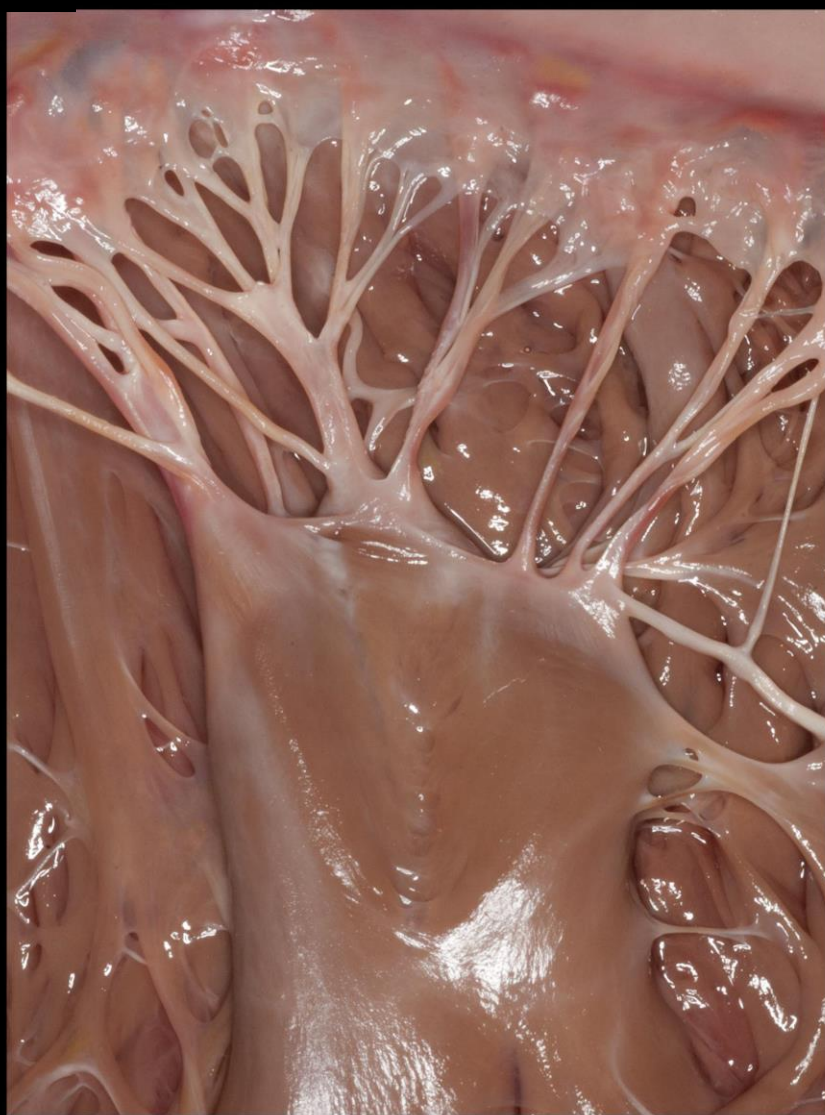
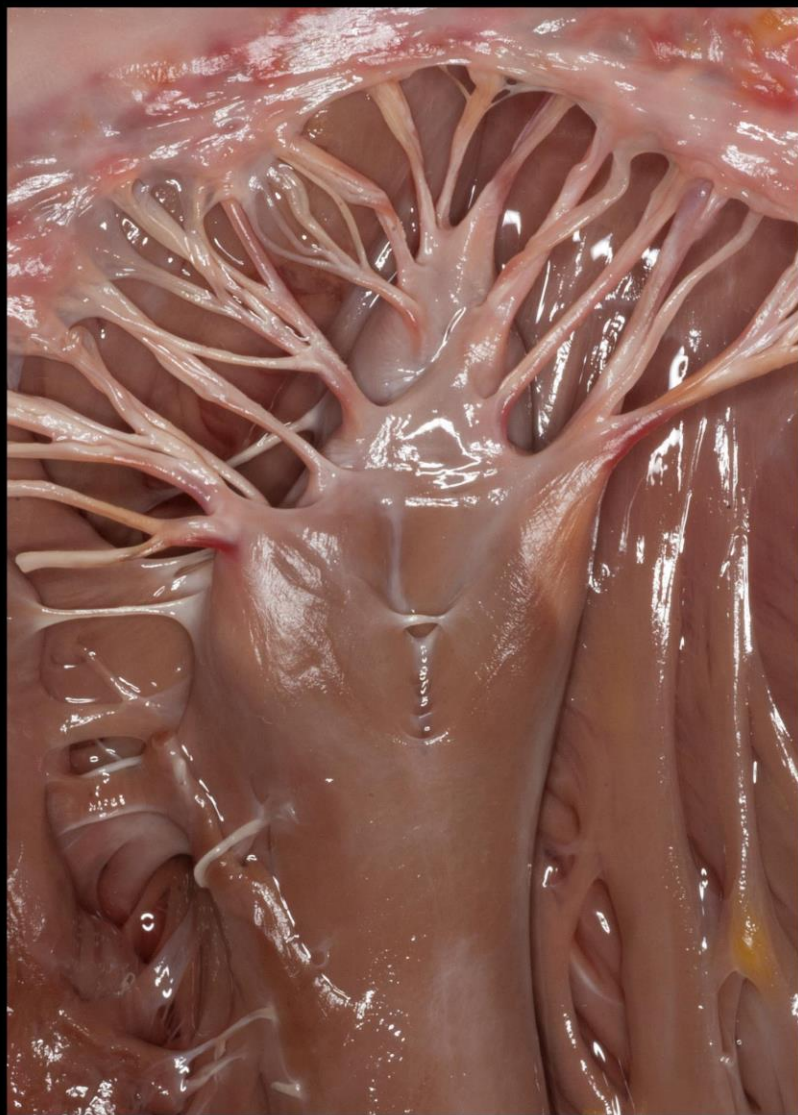
Chordae tendineae

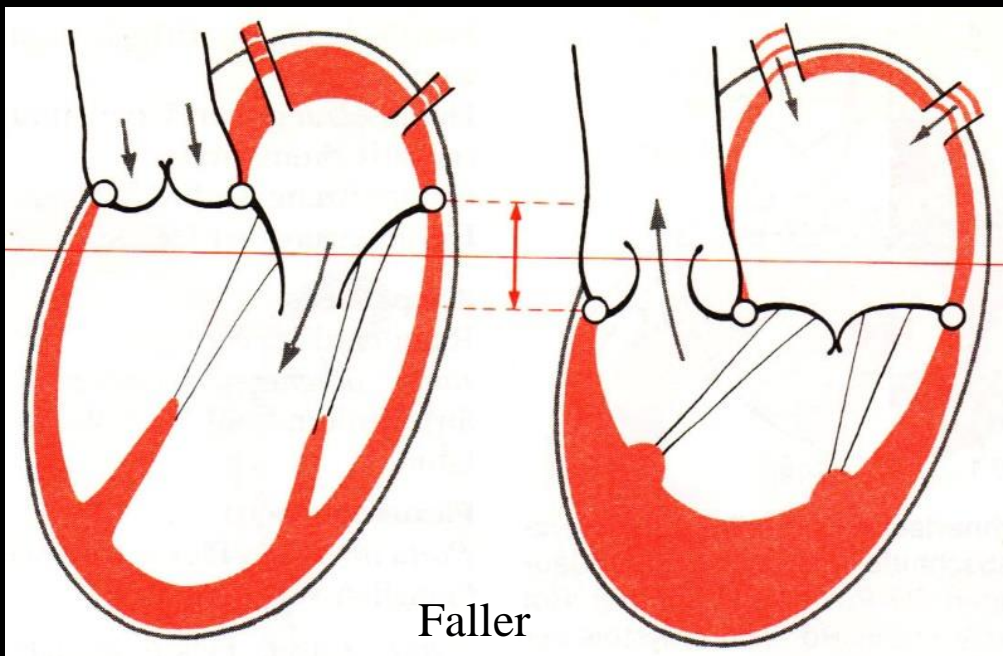
5. M. papillaris anterior

6. M. papillaris posterior



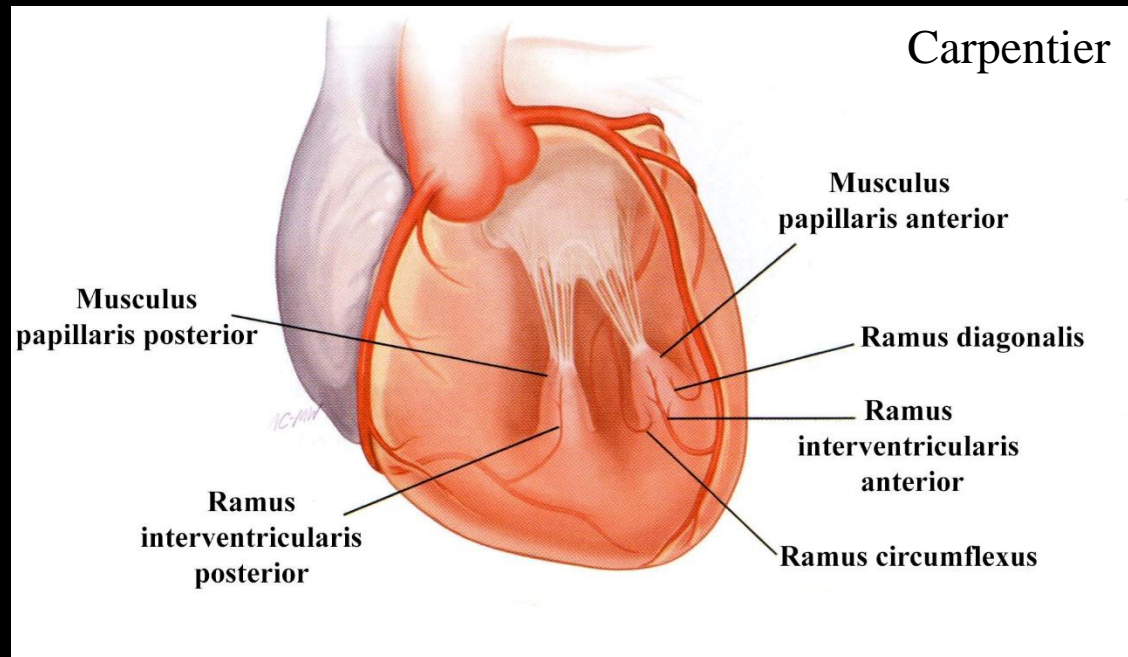
Variábilis papillaris izomzat



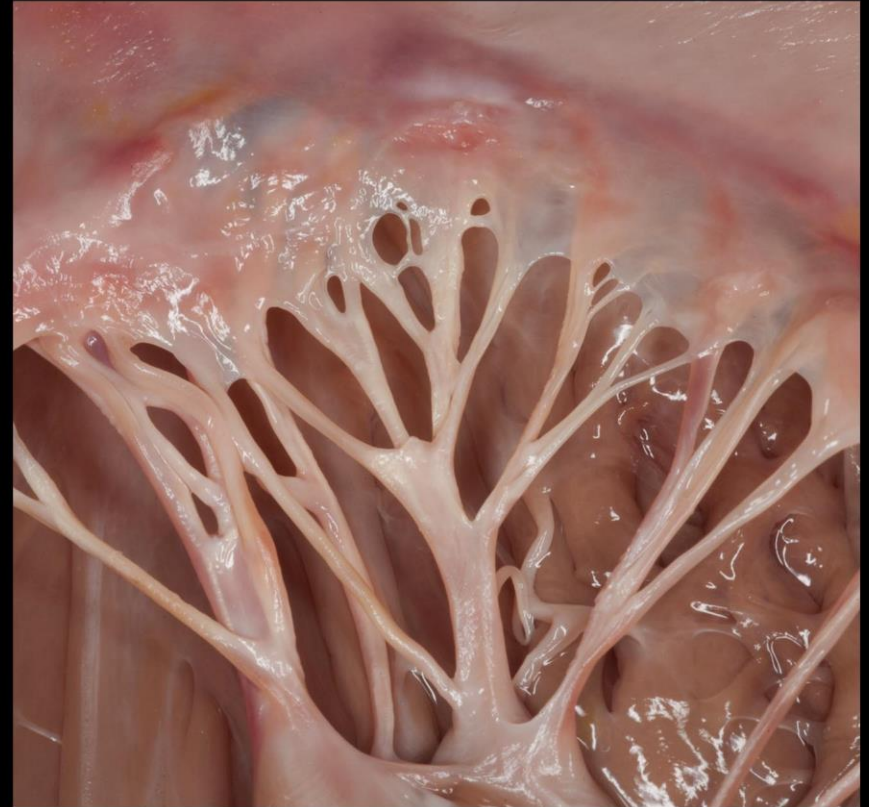
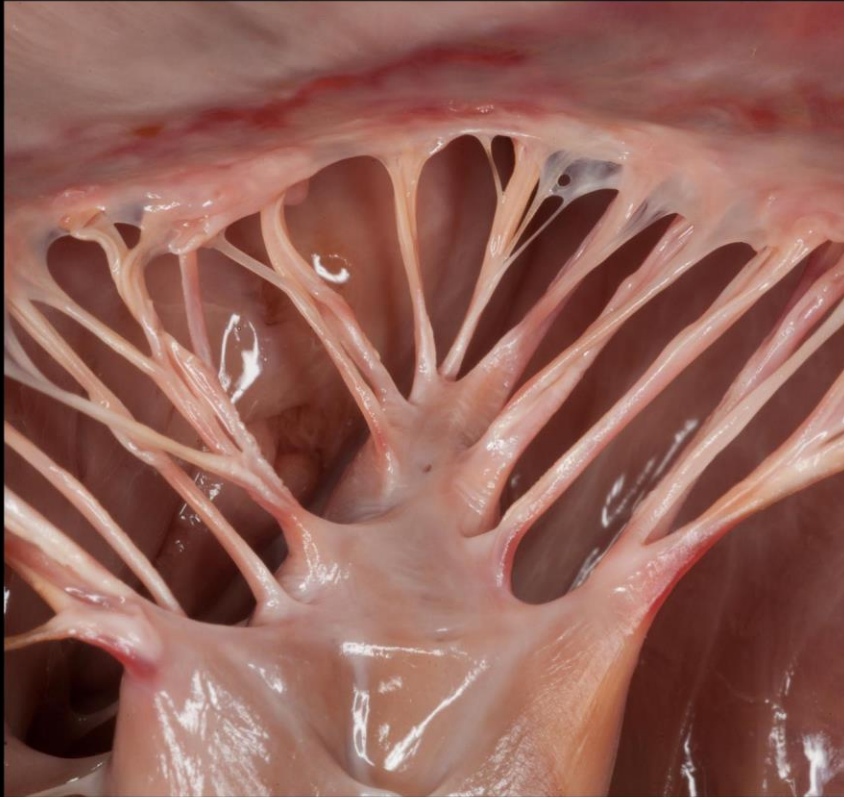


A papillaris izmok összehúzódása

A papillaris izmok vérellátása



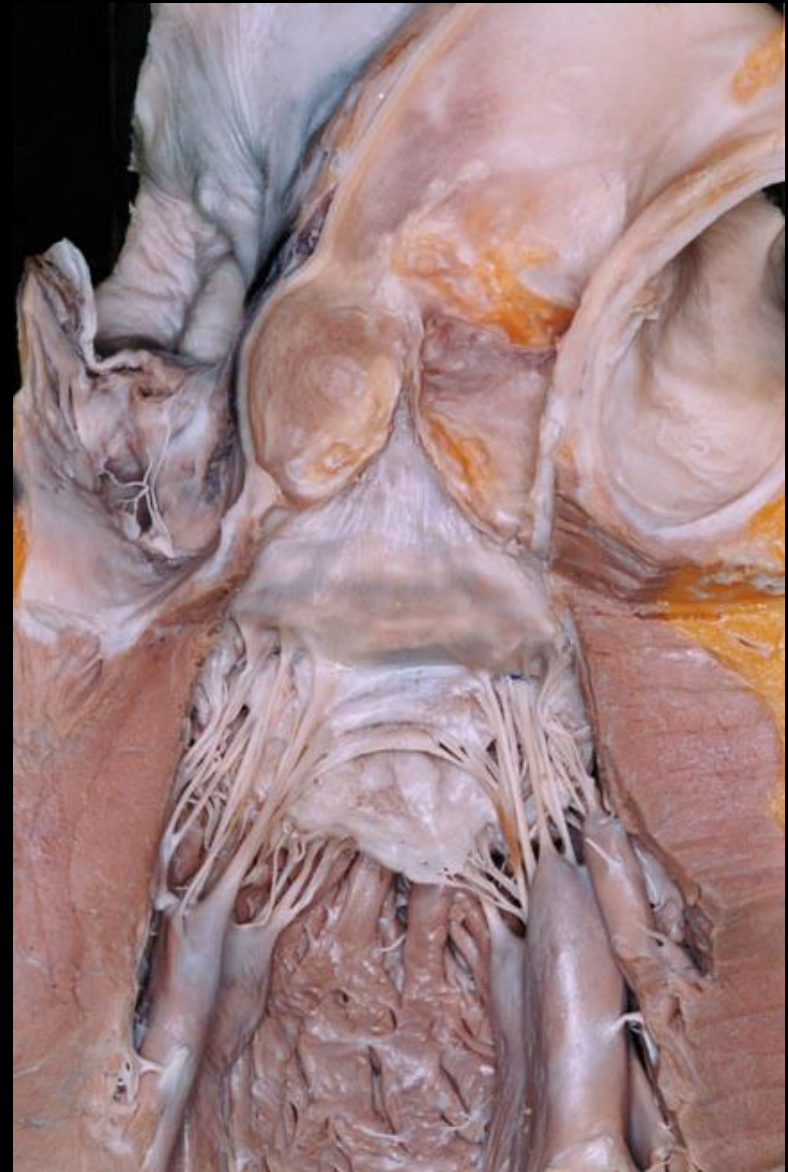
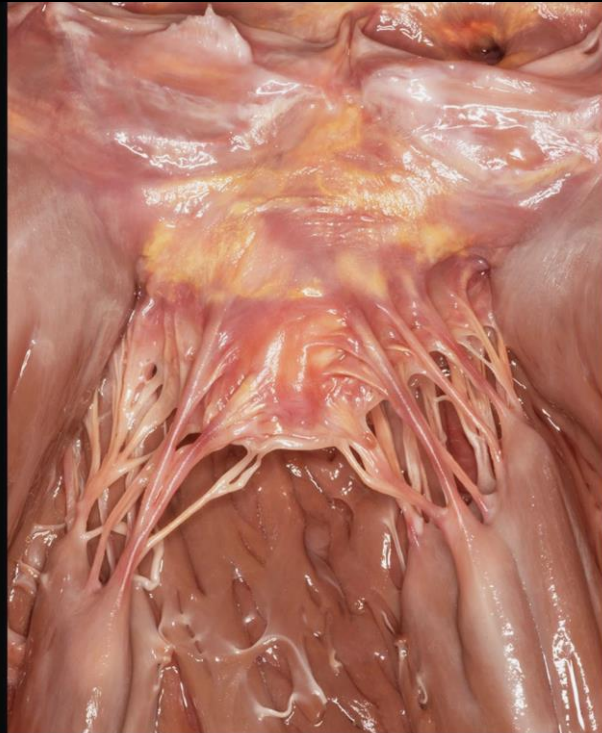
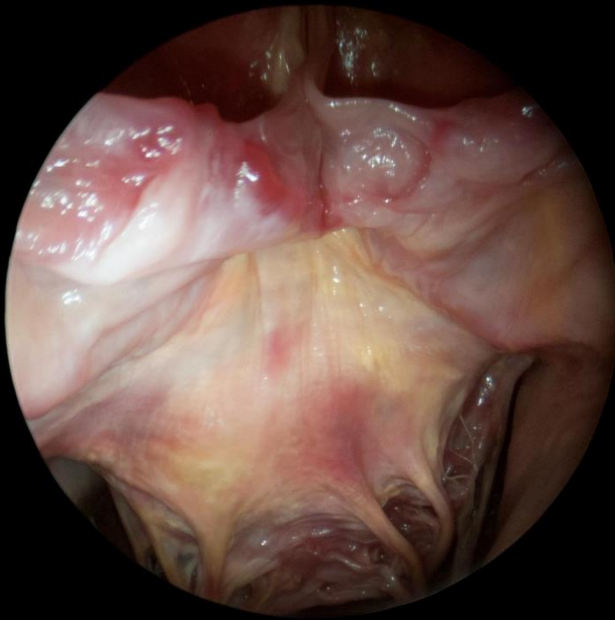
A mitralis billentyű commissurái



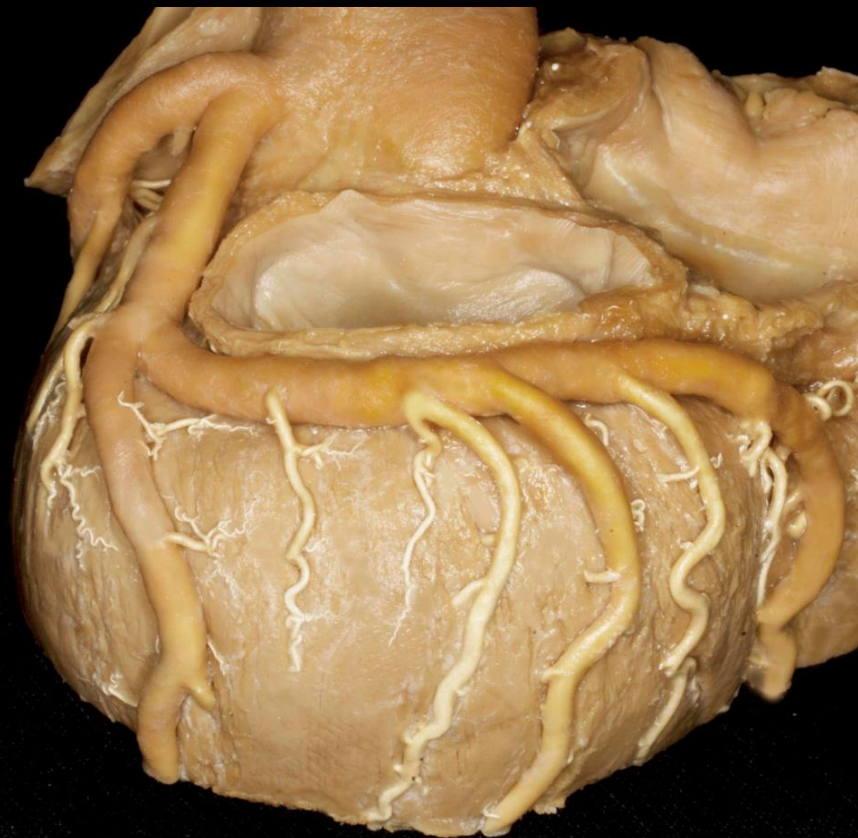
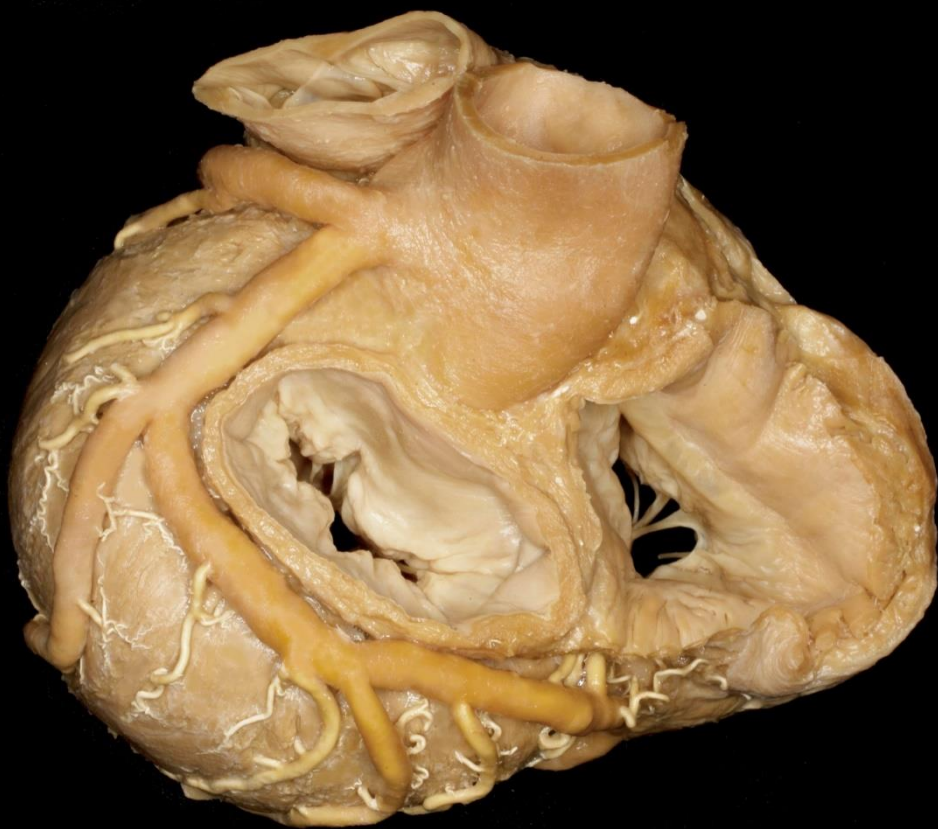
Cuspis commissuralis

- anterolateralis
- posteromedialis

Mitralis- és aorta billenetyű



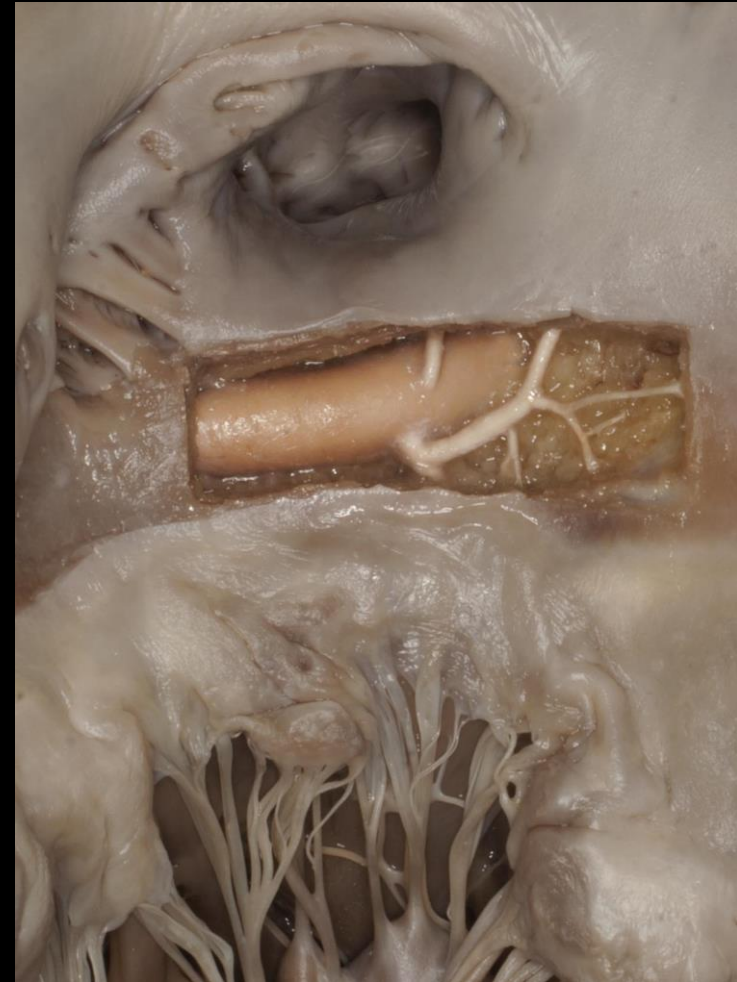
Koszorús erek



A mitralis billentyű környezete



A mitralis billentyű és a ramus circumflexus



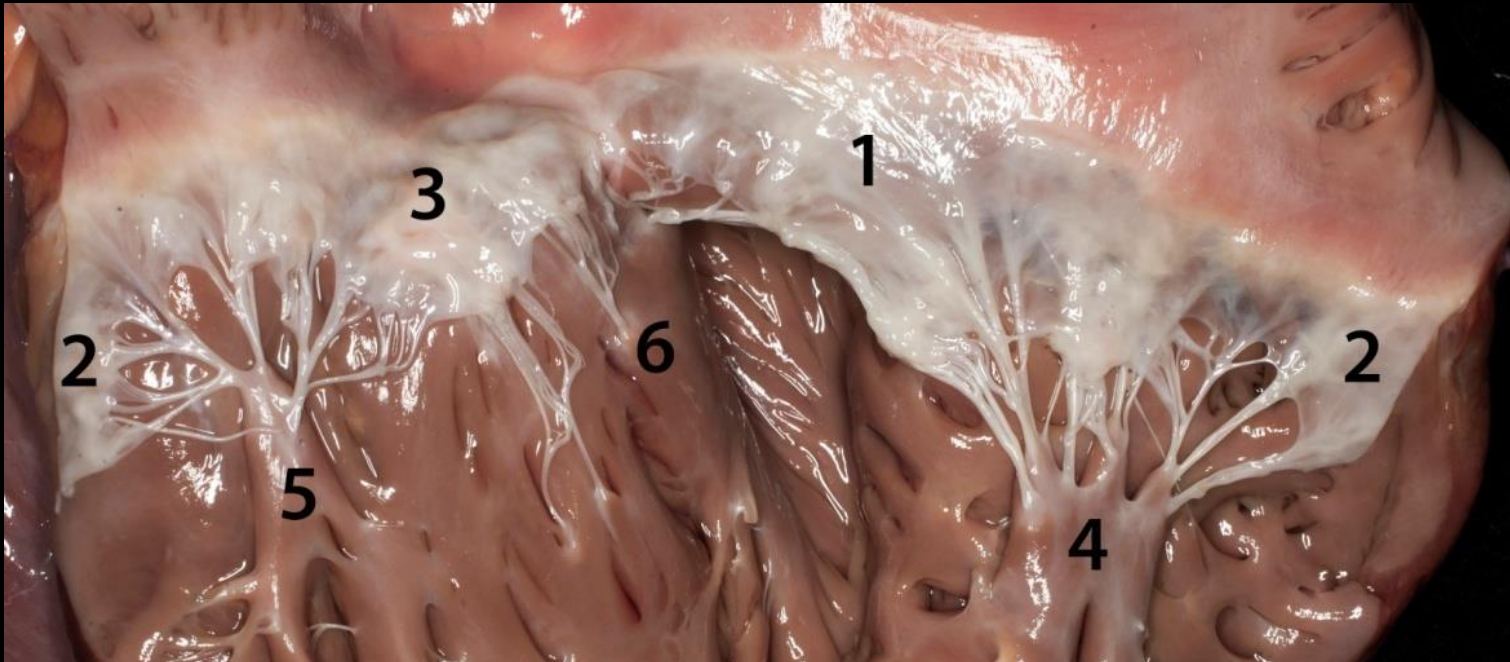
Valva tricuspidalis

1. Cuspis anterior
2. Cuspis posterior
3. Cuspis septalis

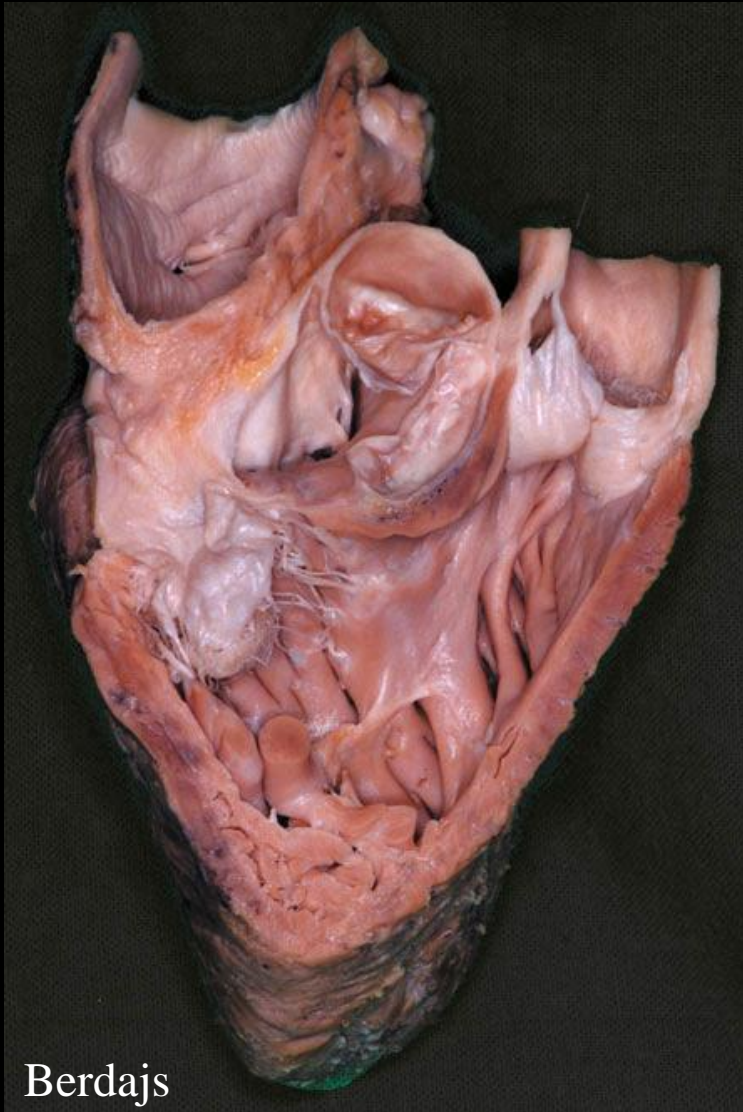


Chordae tendineae

4. M. papillaris anterior
5. M. papillaris posterior
6. M. Papillaris septalis



Valva tricuspidalis



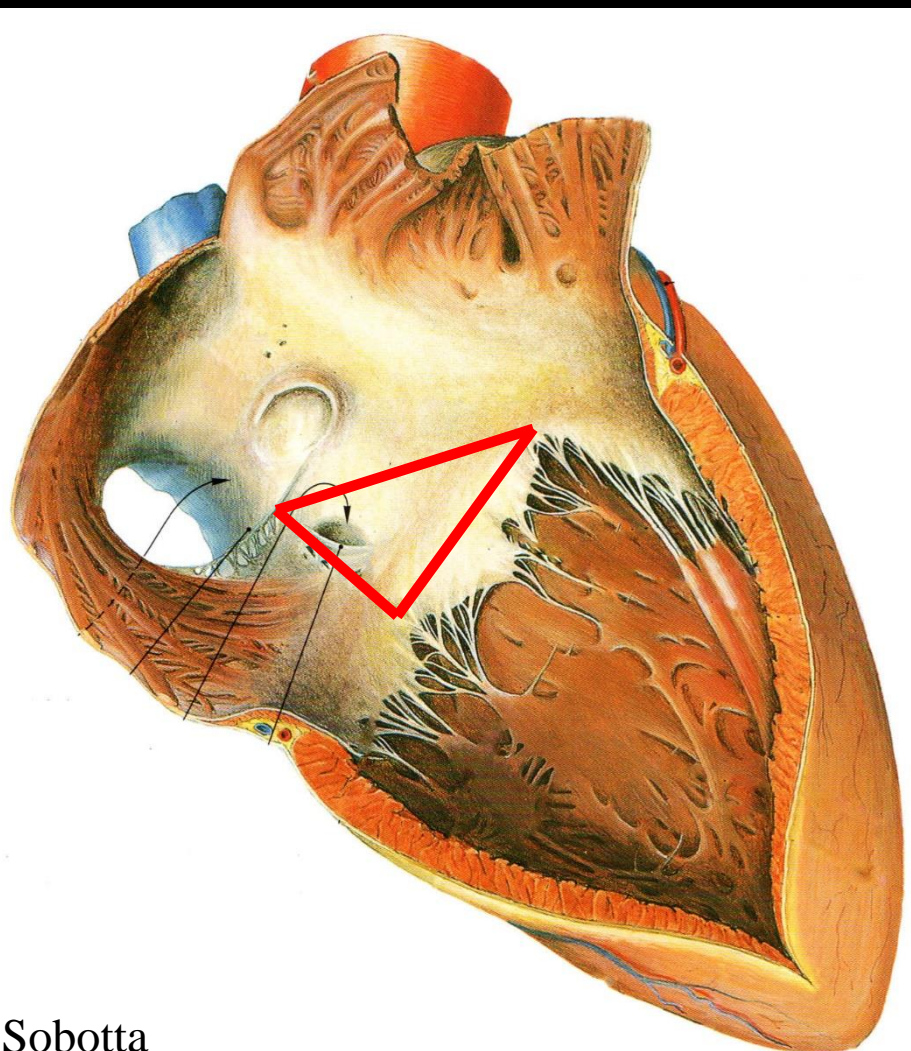
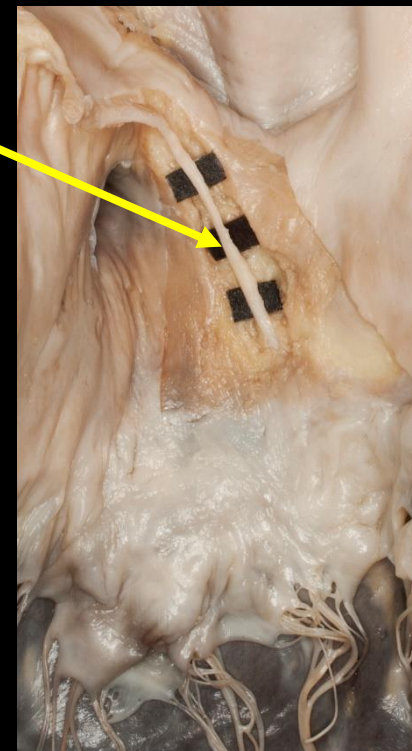
Berdajs



Trabecula septomarginalis

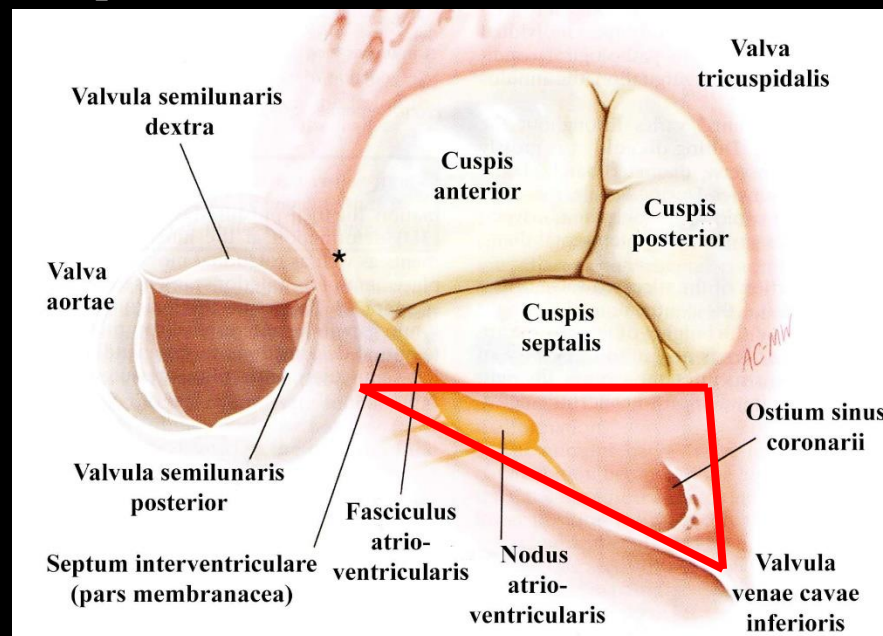
Koch-háromszög és a Nodus atrioventricularis

Todaro-ín

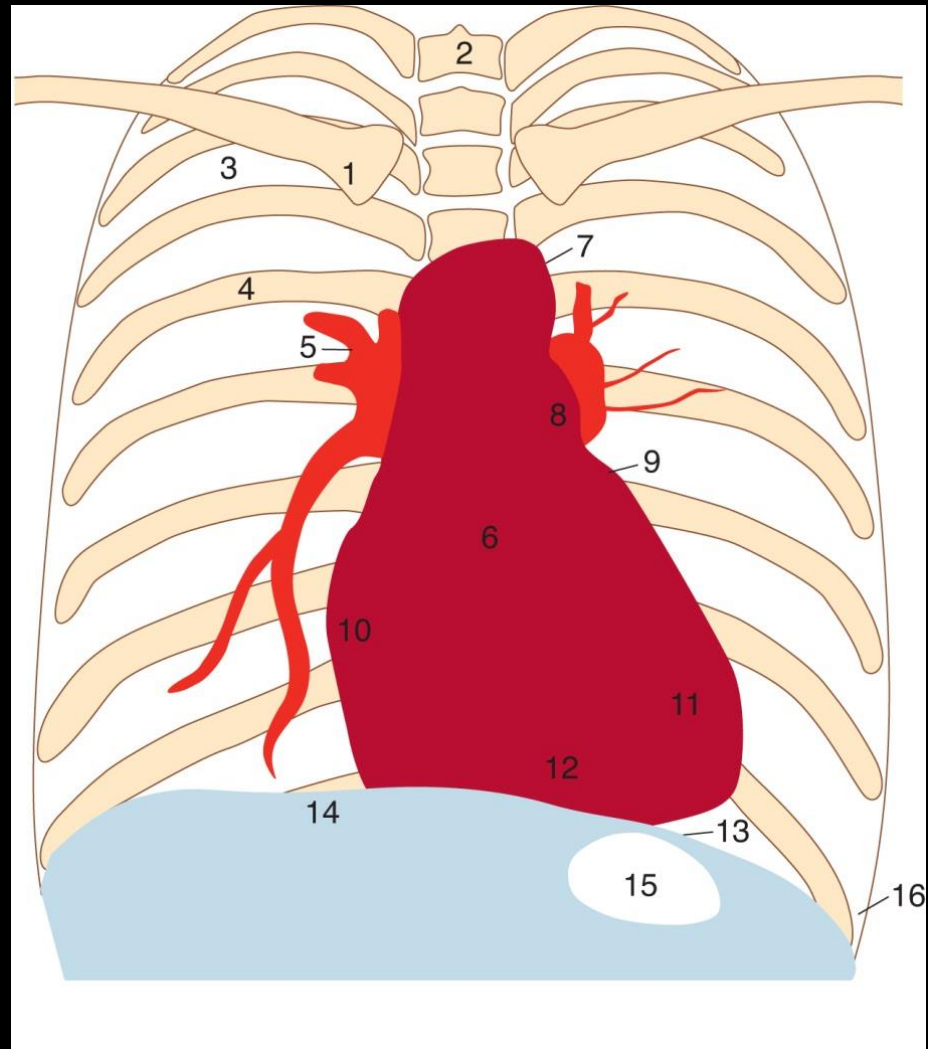
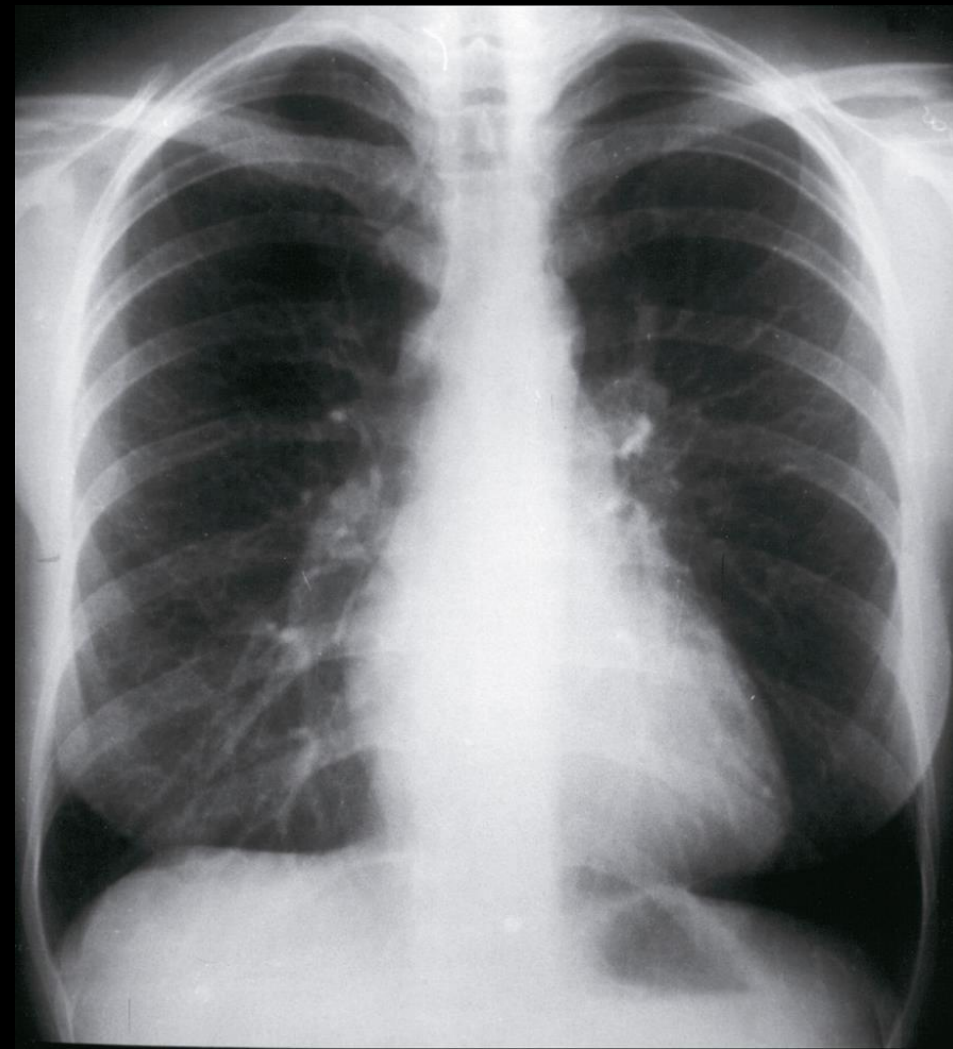


Sobotta

Carpentier

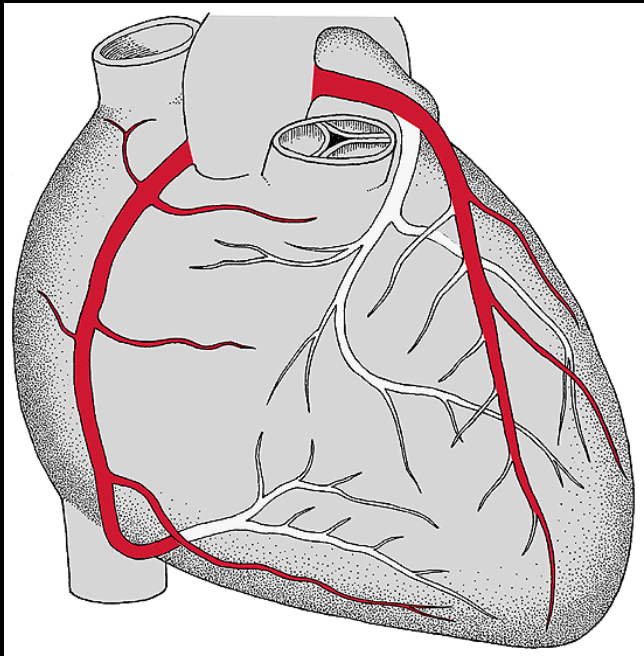


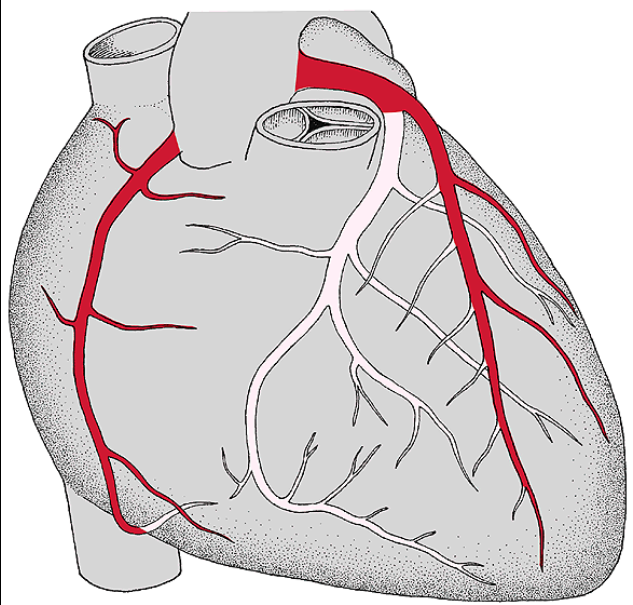
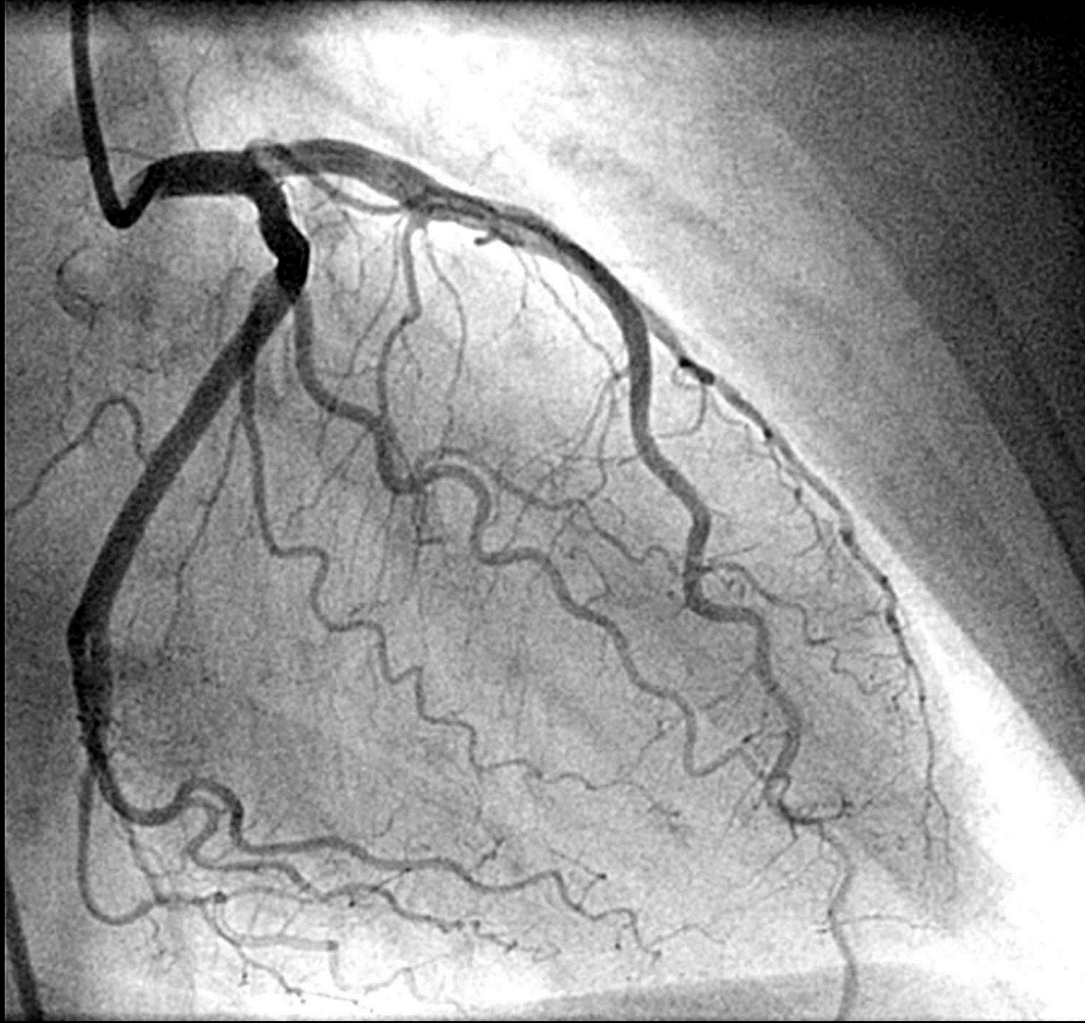
Klinikai aspektusok

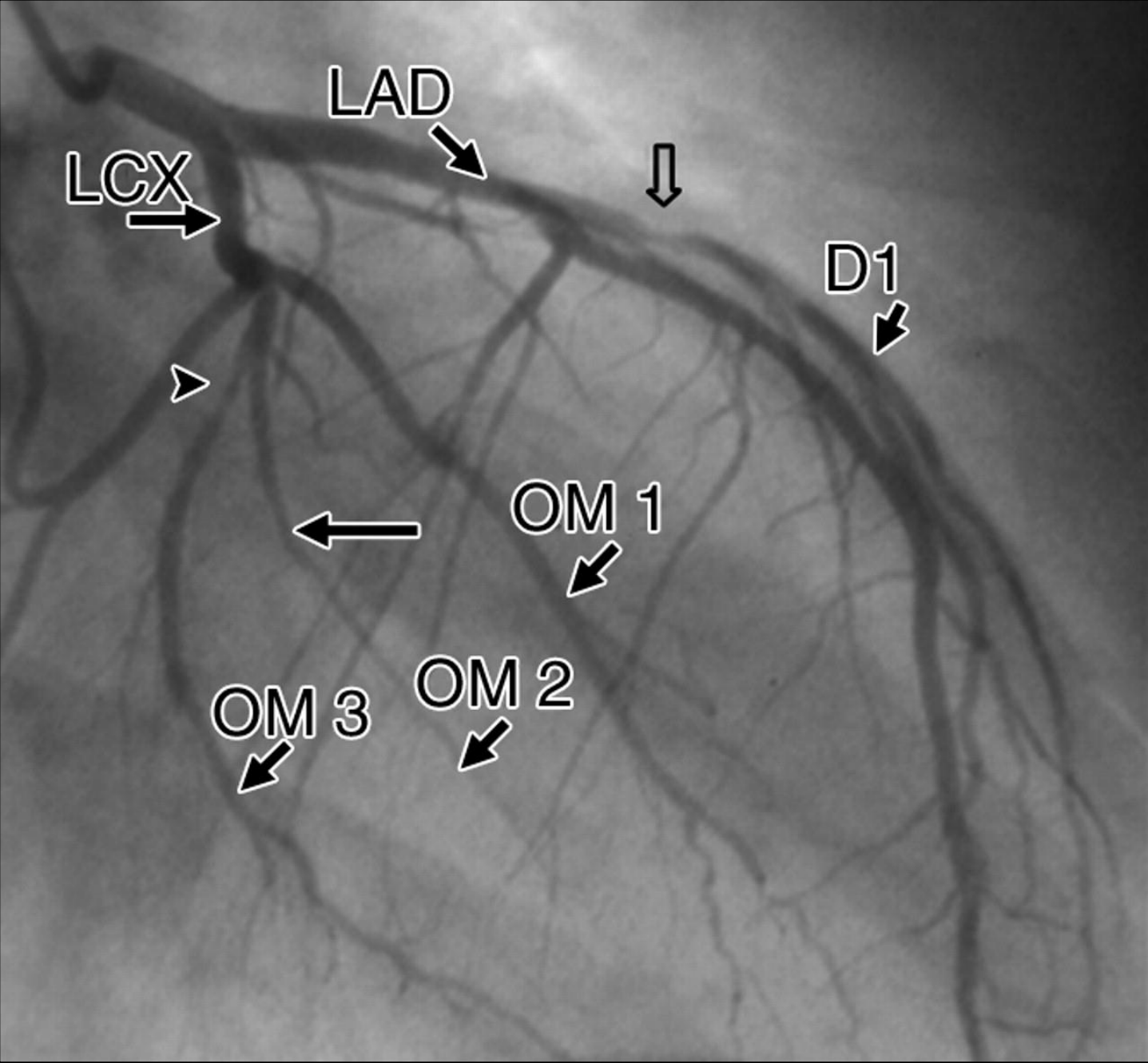


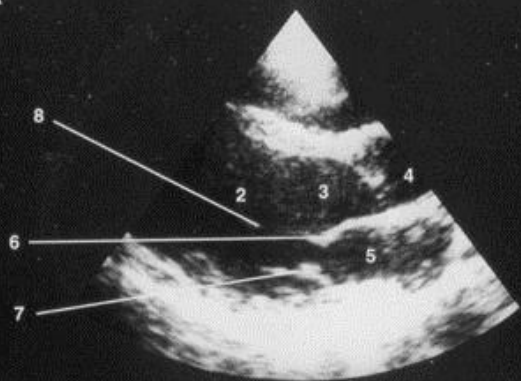
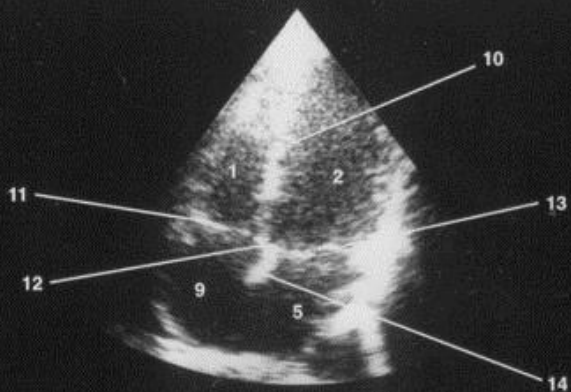
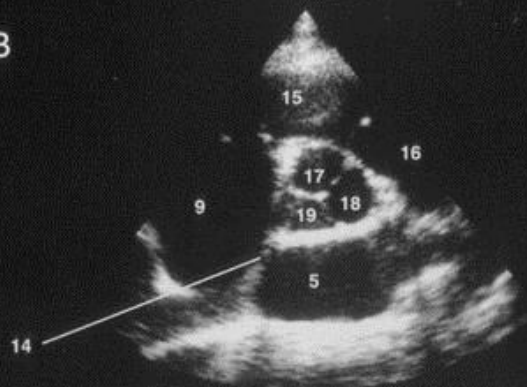
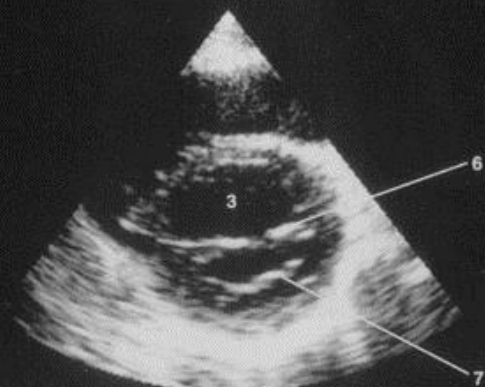
1. clavicle
2. vertebral column
3. intercostal space
4. rib
5. hilum of the lung
6. left atrium
7. aortic arch
8. pulmonary trunk
9. left auricle

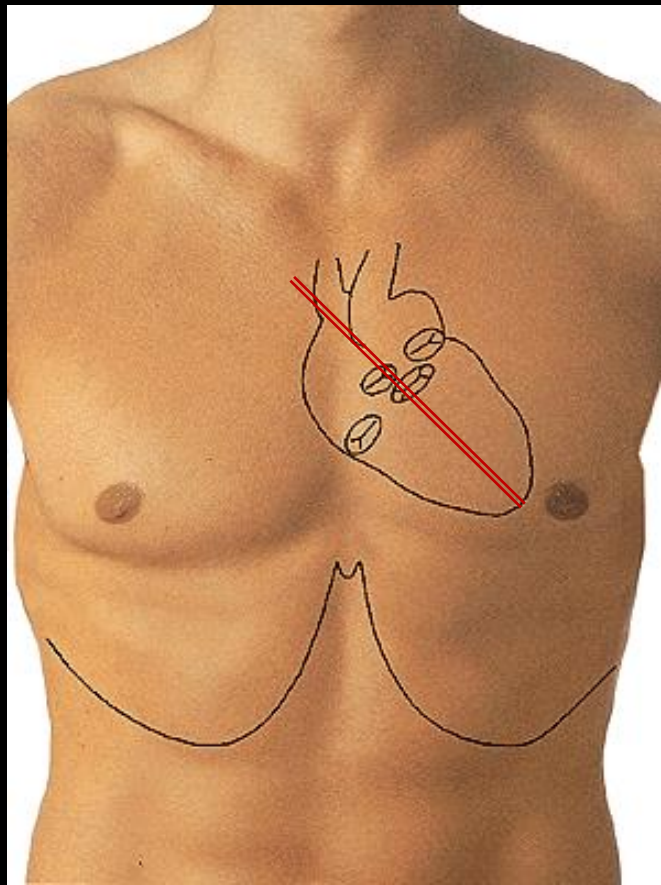
10. right atrium
11. left ventricle
12. right ventricle
13. left cardiophrenic angle
14. diaphragm
15. gastric air bubble
16. costodiaphragmatic recess



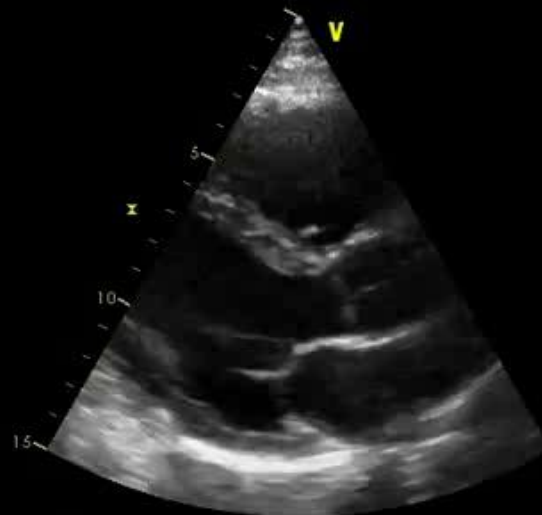




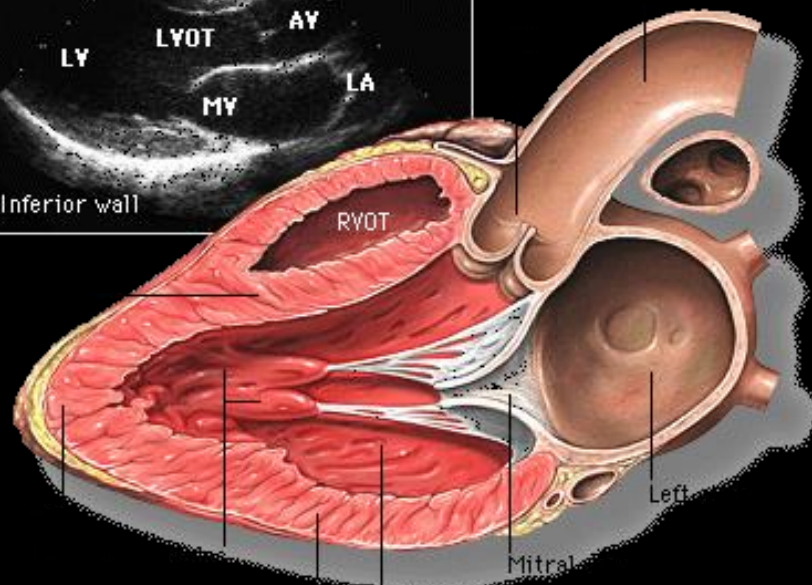
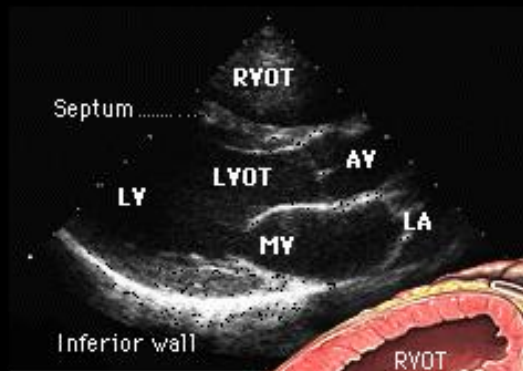
A**C****B****D**



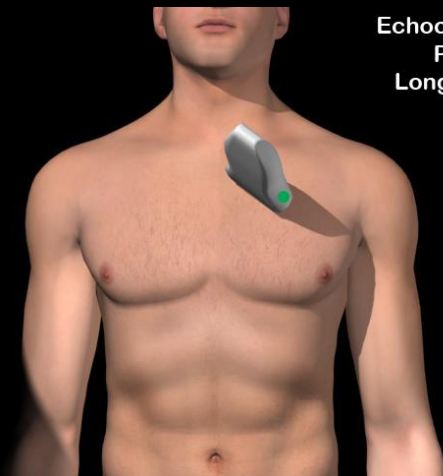
10:21:09

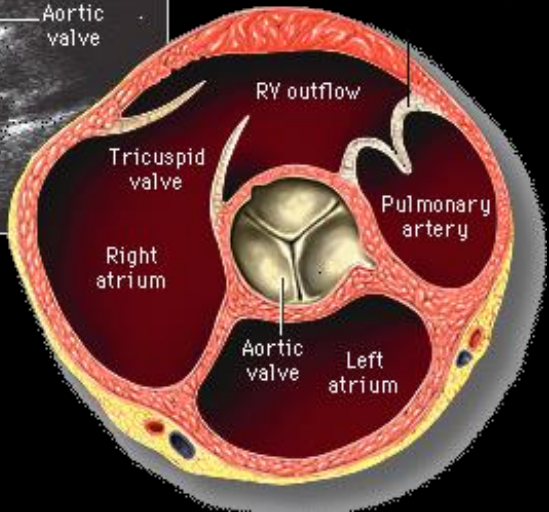
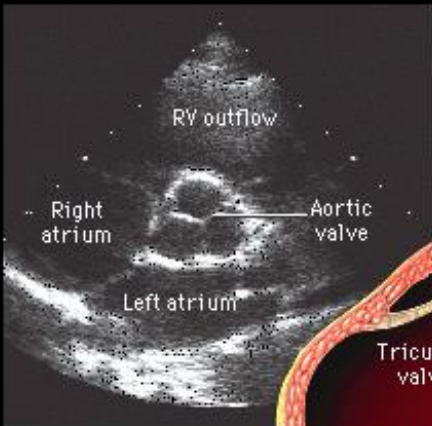
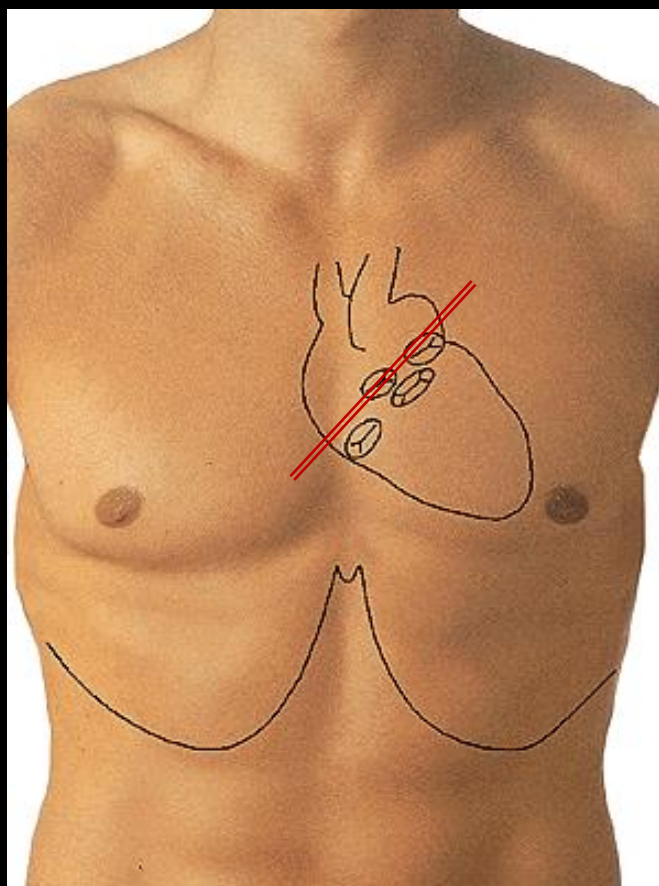


60
9:89 HR



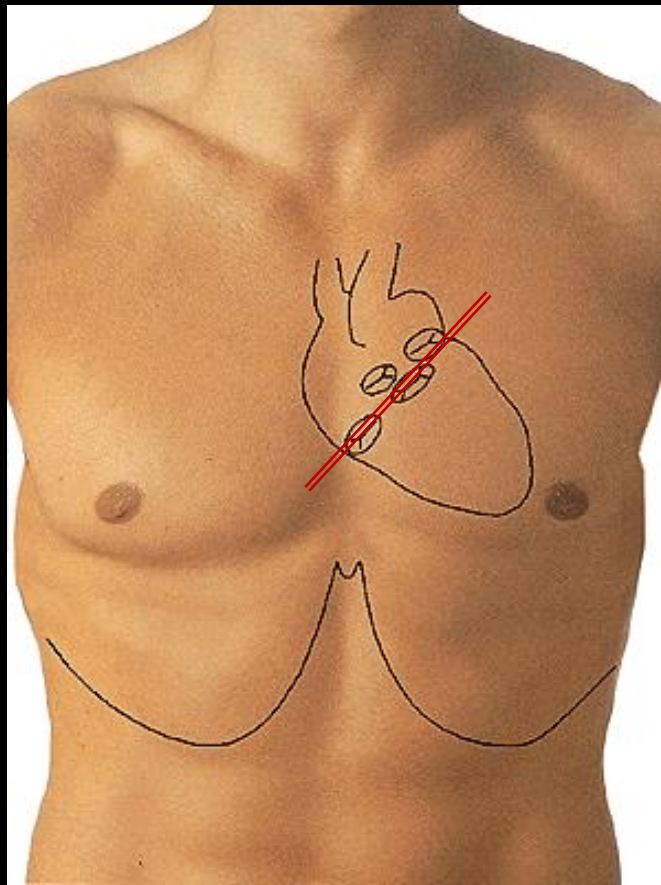
Echocardiogram
Parasternal
Long Axis View



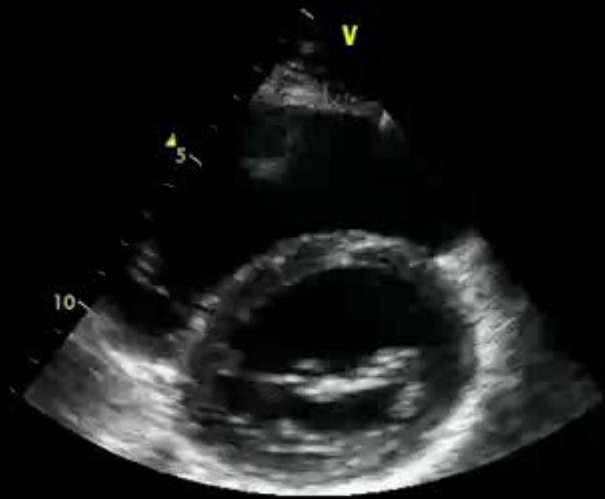


Echocardiogram
Parasternal
Short Axis View
Aorta

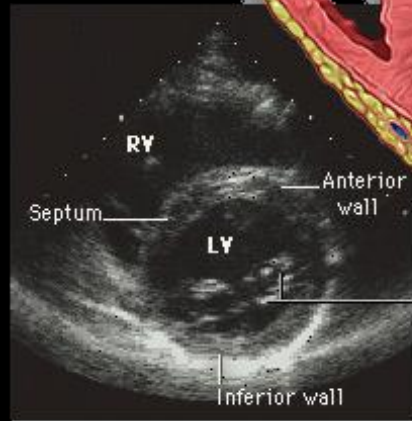
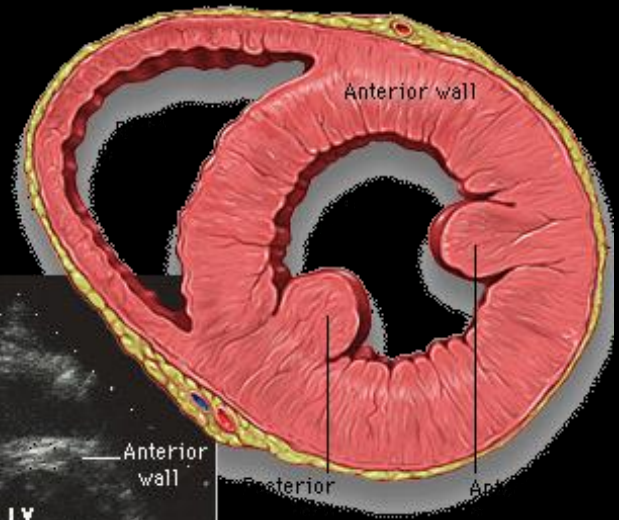




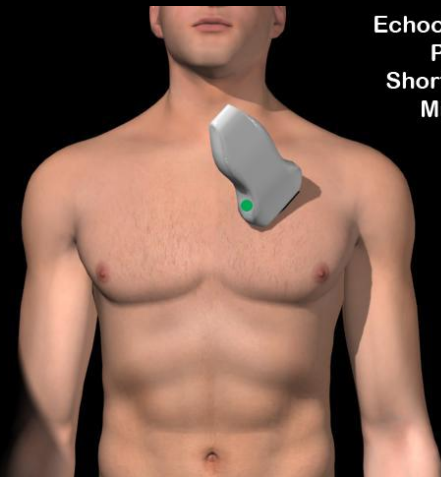
07:32:19



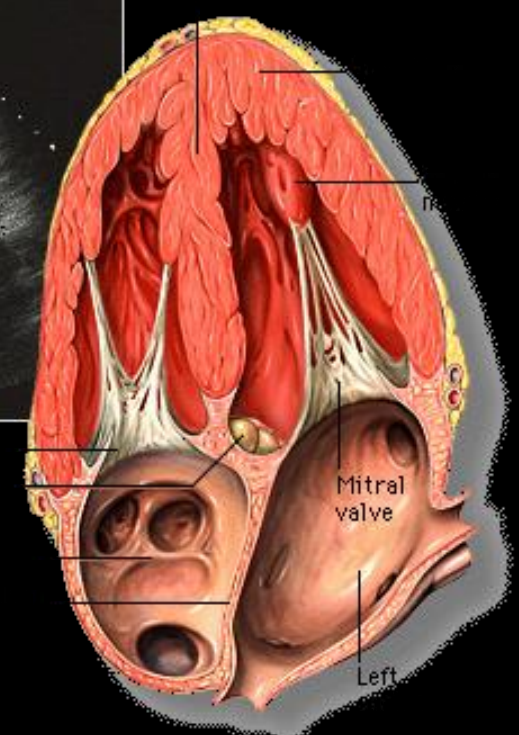
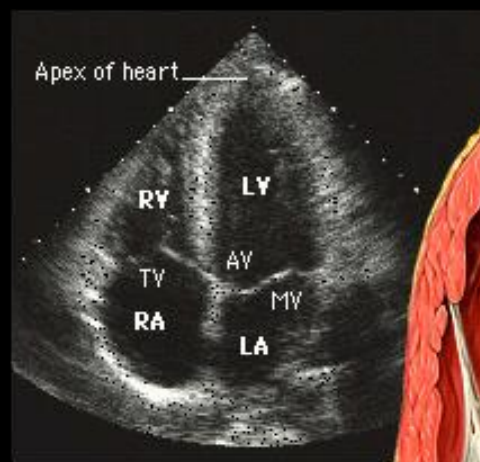
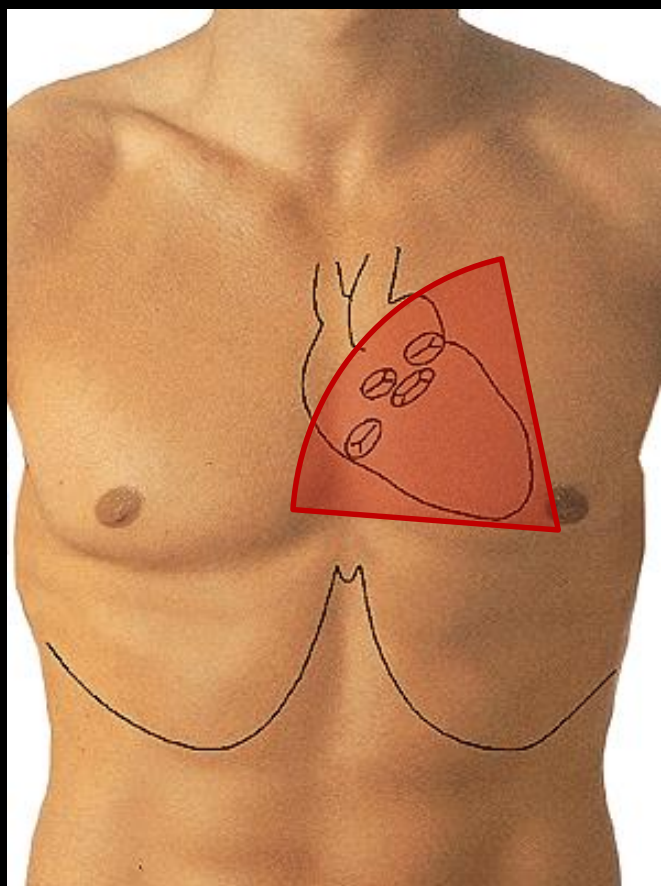
52
HR



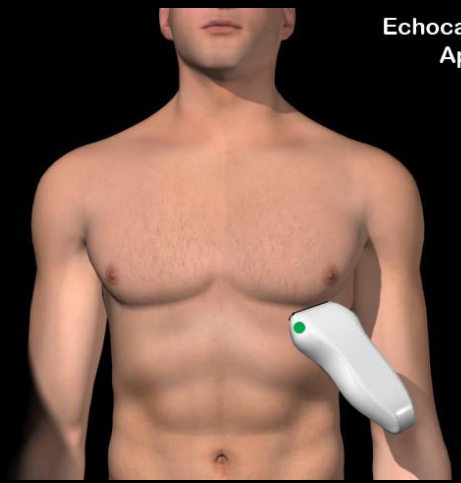
Echocardiogram
Parasternal
Short Axis View
Mitral/Apical



fpnotebook.com

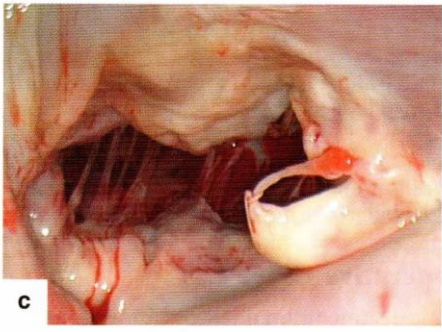
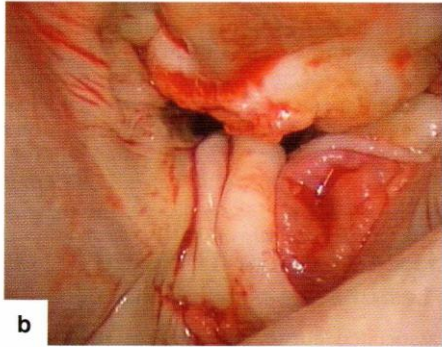
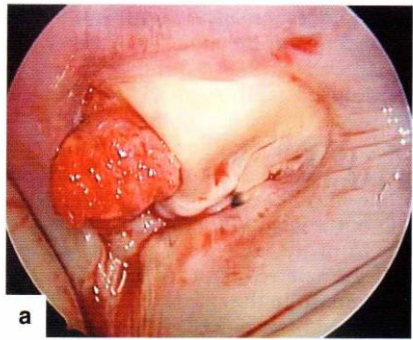


Echocardiogram
Apical View

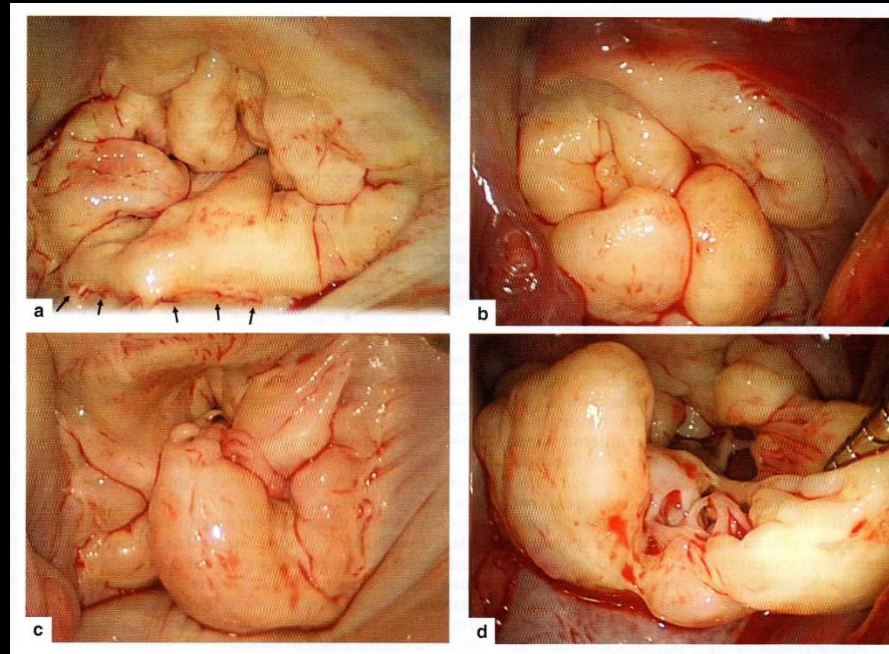


A mitralis billentyű betegsége

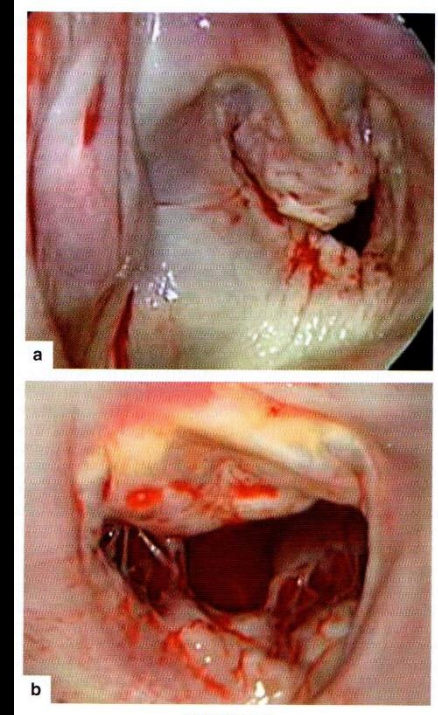
Endocarditis



Barlow-billentyű



Ischaemiás cardiomyopathia





Echokardiografia, mitralis insuffientia

