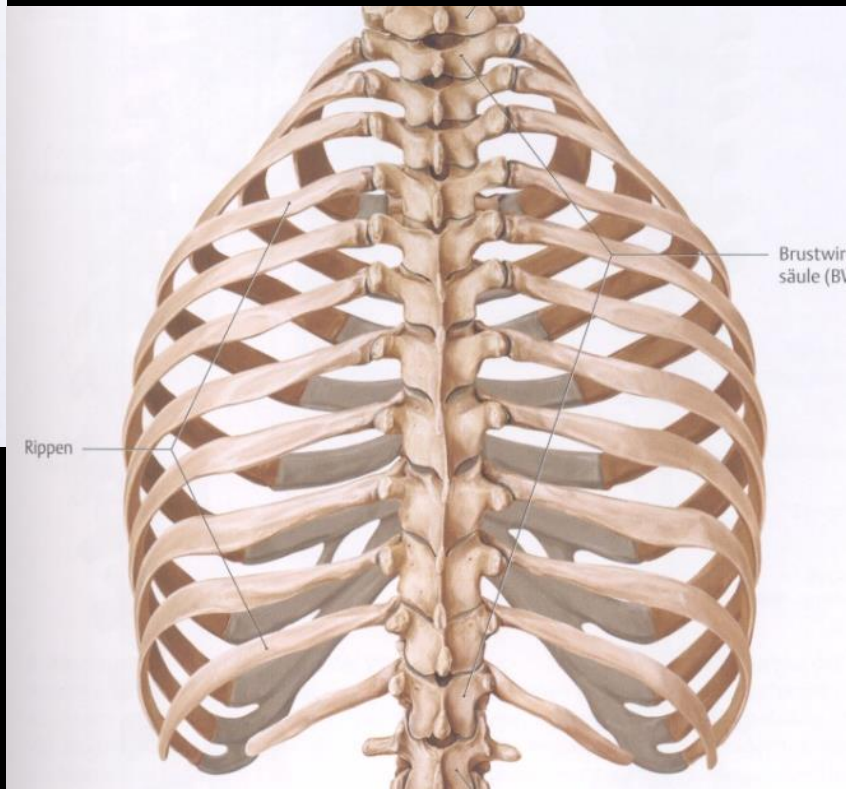
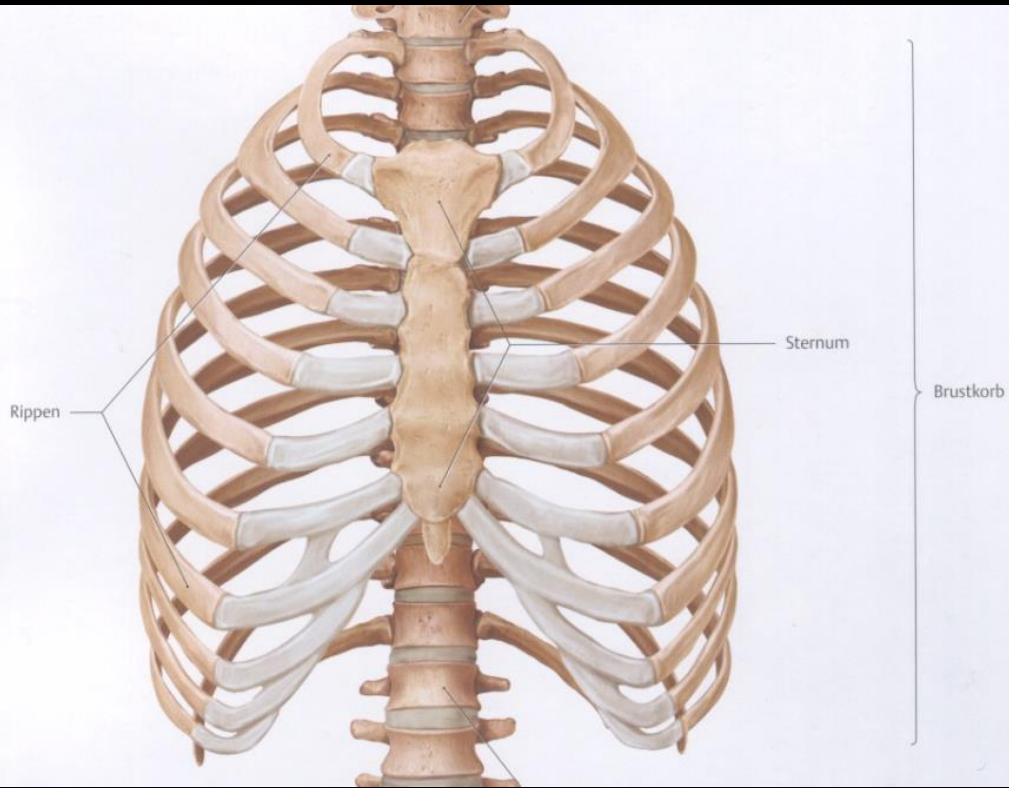
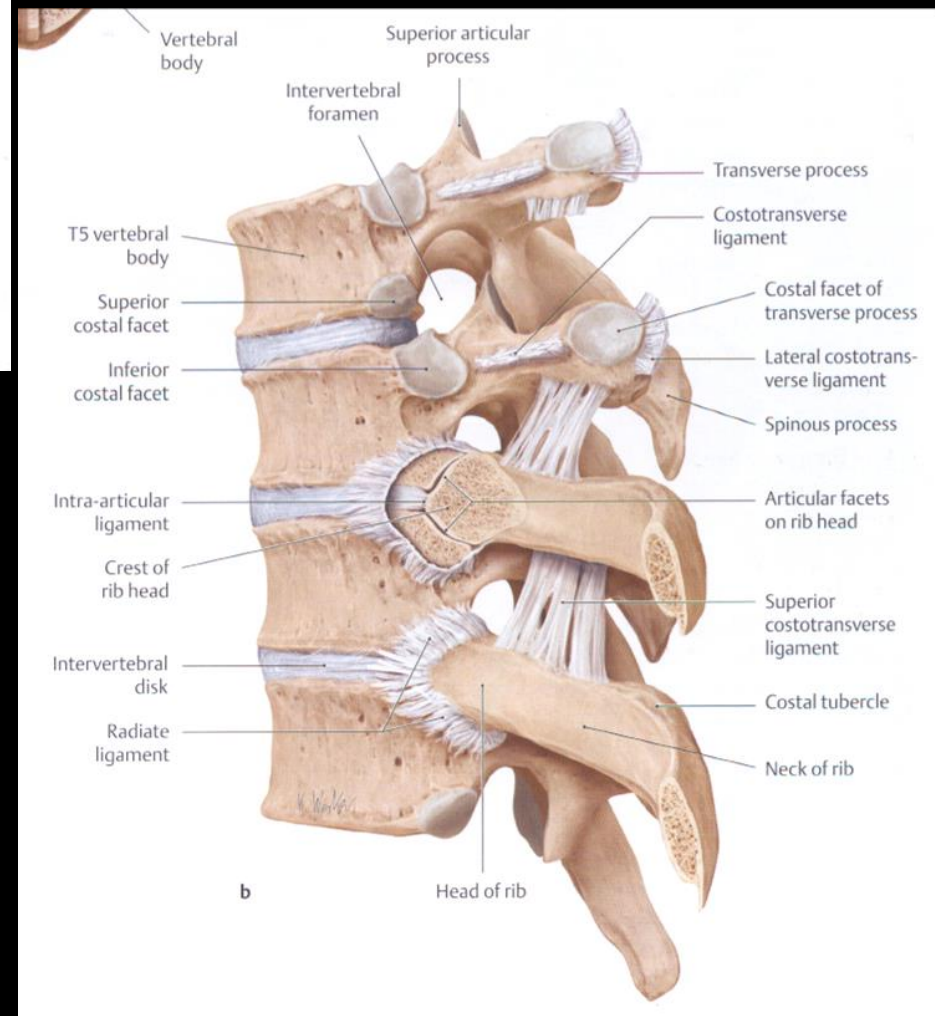
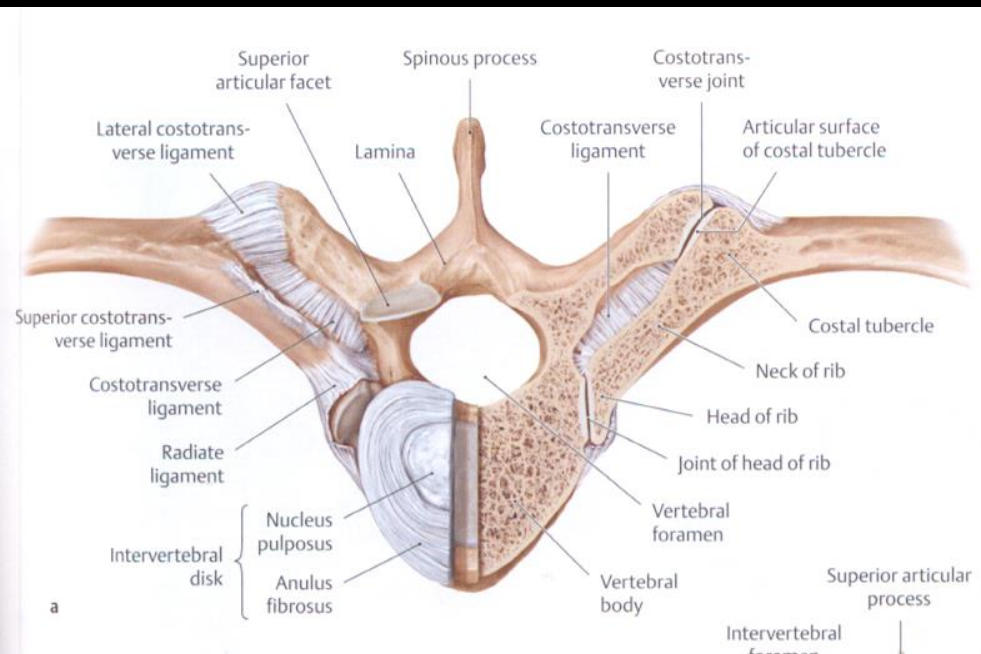


Mellkasfal és a hasfal szerkezete

Barna János

A MELLKASFAL SZERKEZETE

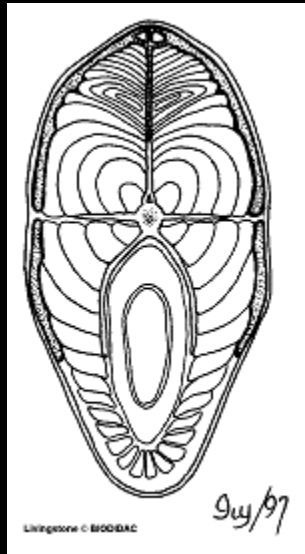
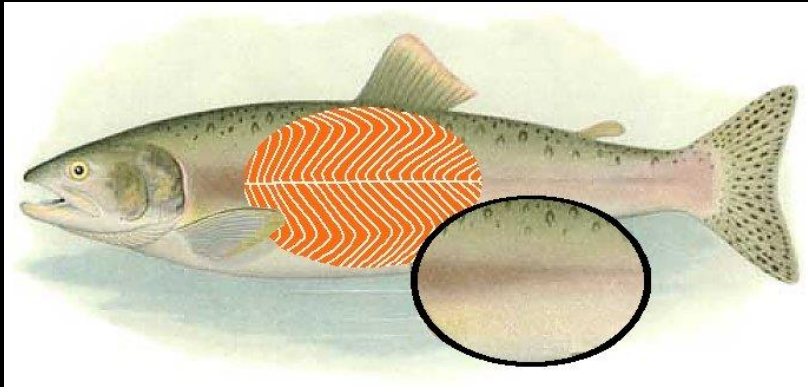




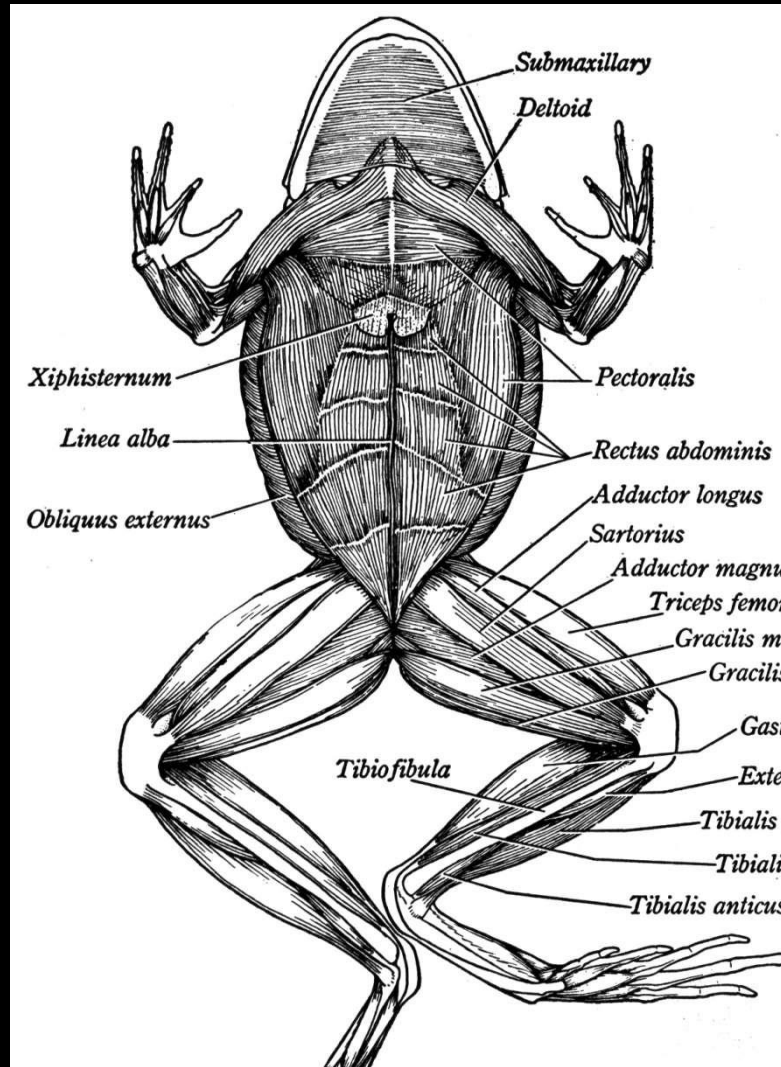


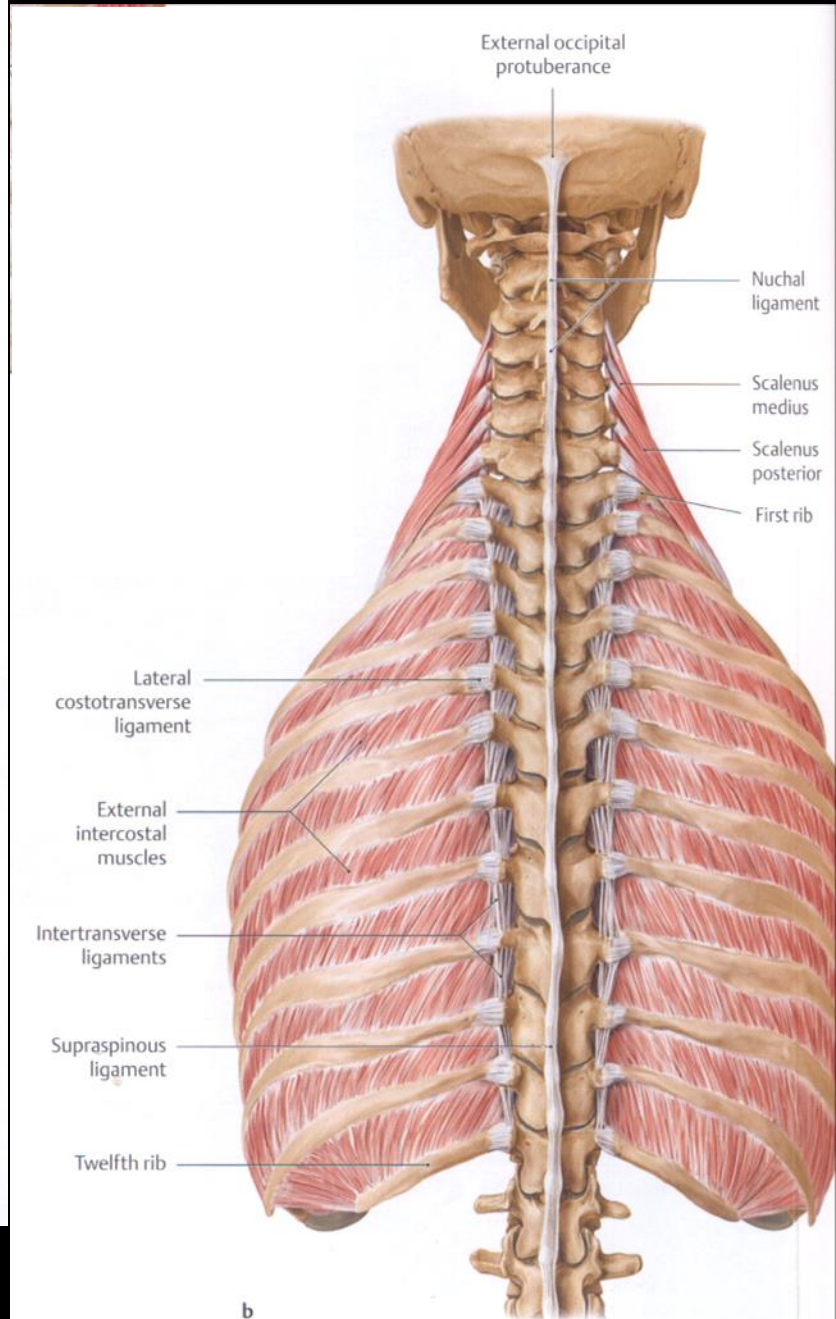
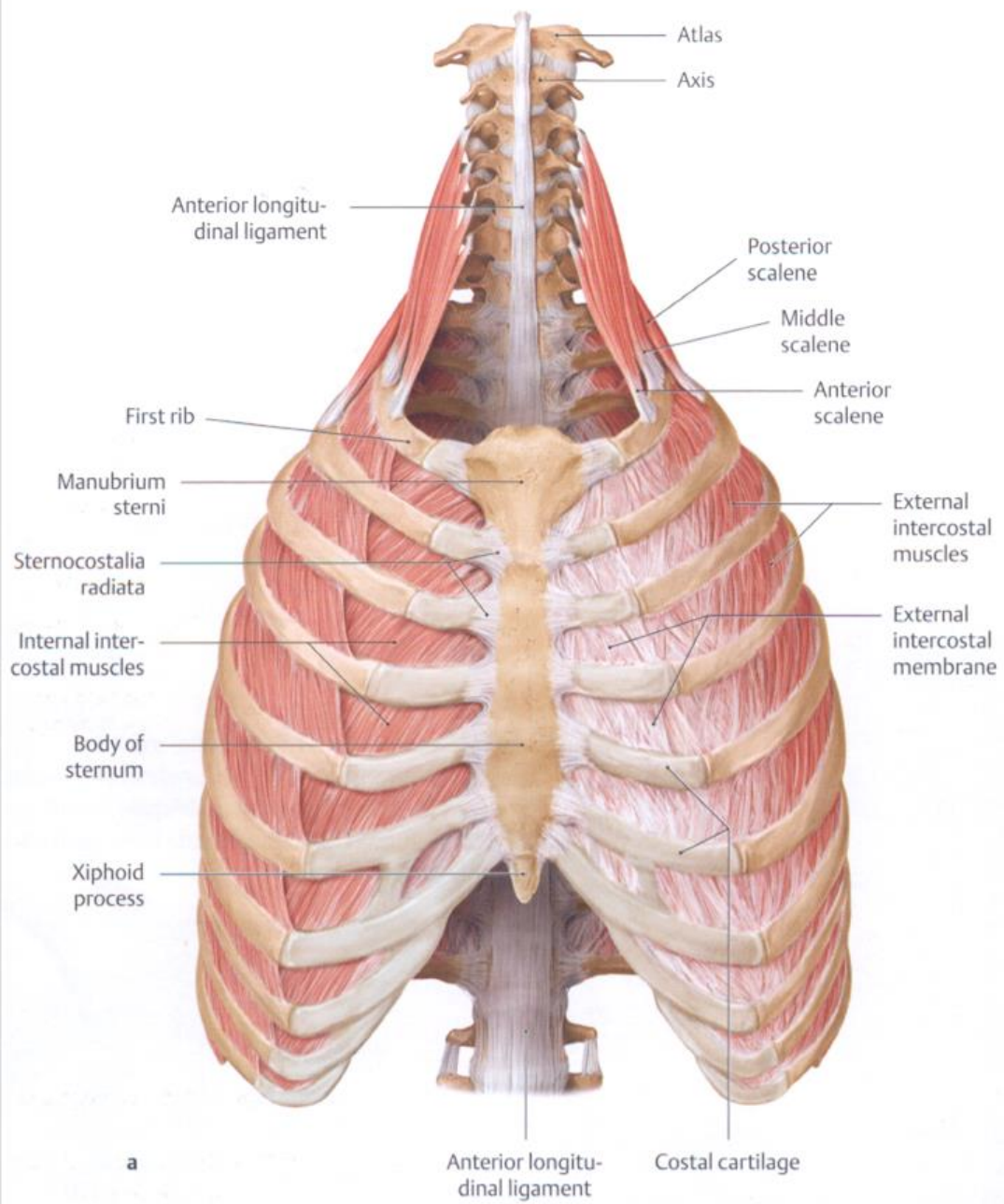


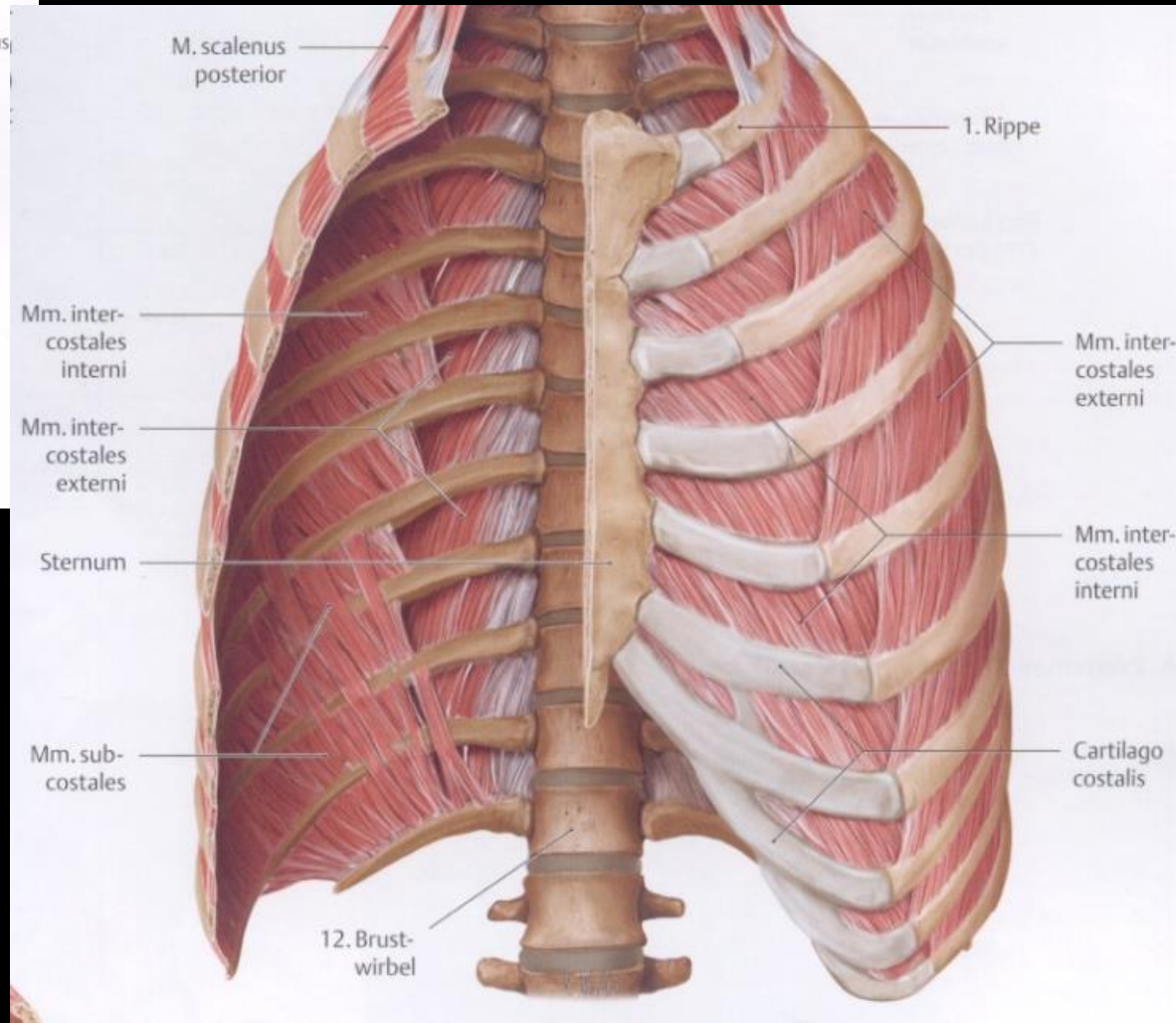
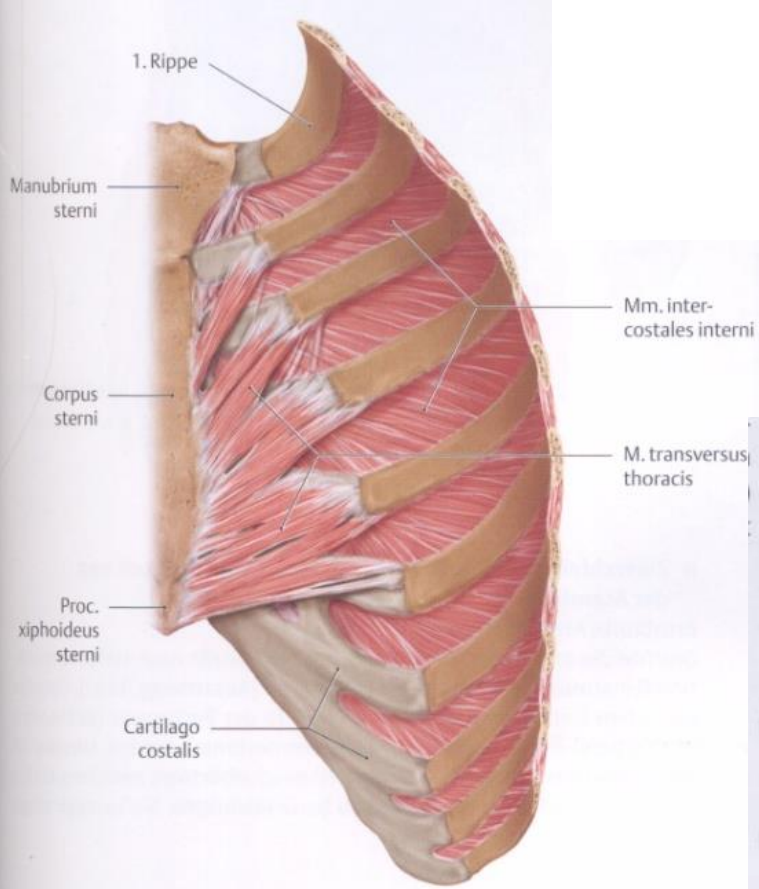
Southern Purple Enteropneust
Yoda purpurata n. gen, n. sp

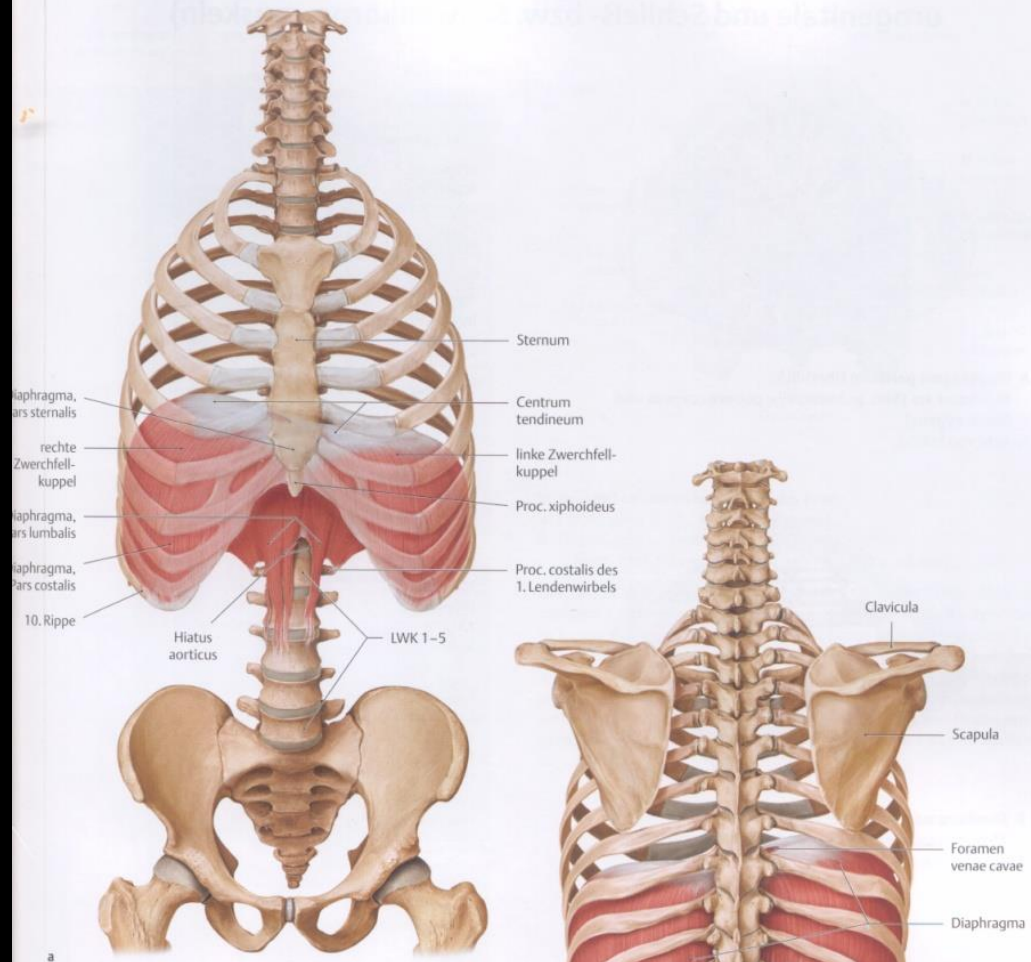


A törzs izmai







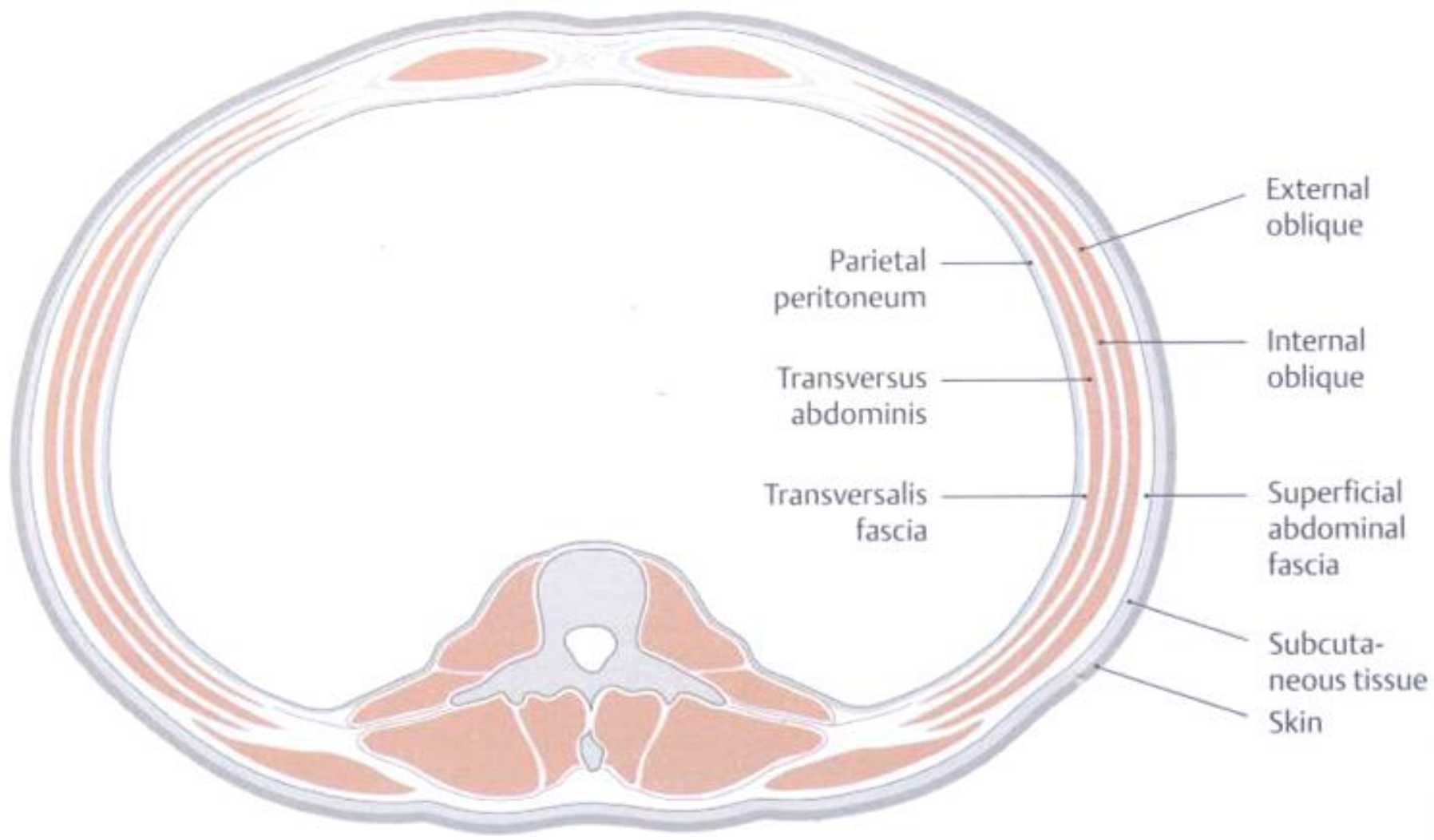


Zwerchfell (Diaphragma)
 Ansicht von ventral; b Ansicht von dorsal.

Sternum
 Centrum tendineum
 linke Zwerchfellkuppel
 Proc. xiphoideus
 Proc. costalis des 1. Lendenwirbels
 Diaphragma, pars sternalis
 rechte Zwerchfellkuppel
 Diaphragma, pars lumbalis
 Diaphragma, pars costalis
 10. Rippe
 Hiatus aorticus
 LWK 1-5

Clavicula
 Scapula
 Foramen venae cavae
 Diaphragma
 12. Rippe
 Trigonum lumbocostale
 Procc. costales
 Crista iliaca
 Spina iliaca posterior superior
 Os sacrum

A HASFAL SZERKEZETE



Parietal peritoneum

Transversus abdominis

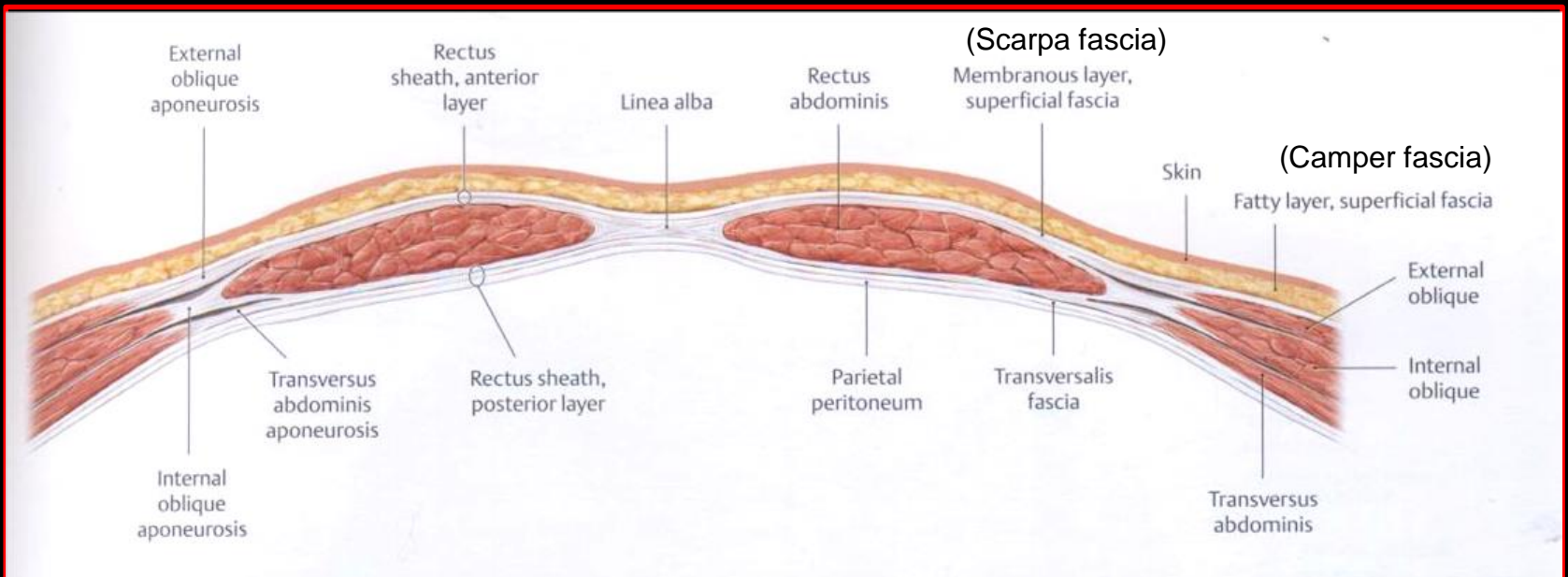
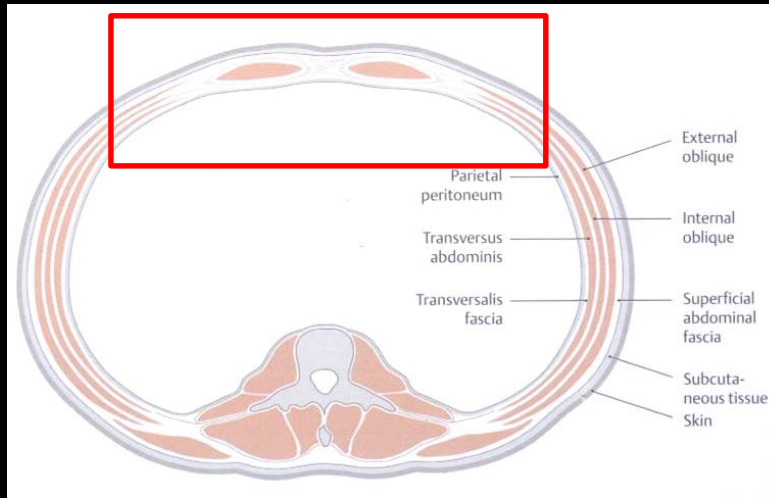
Transversalis fascia

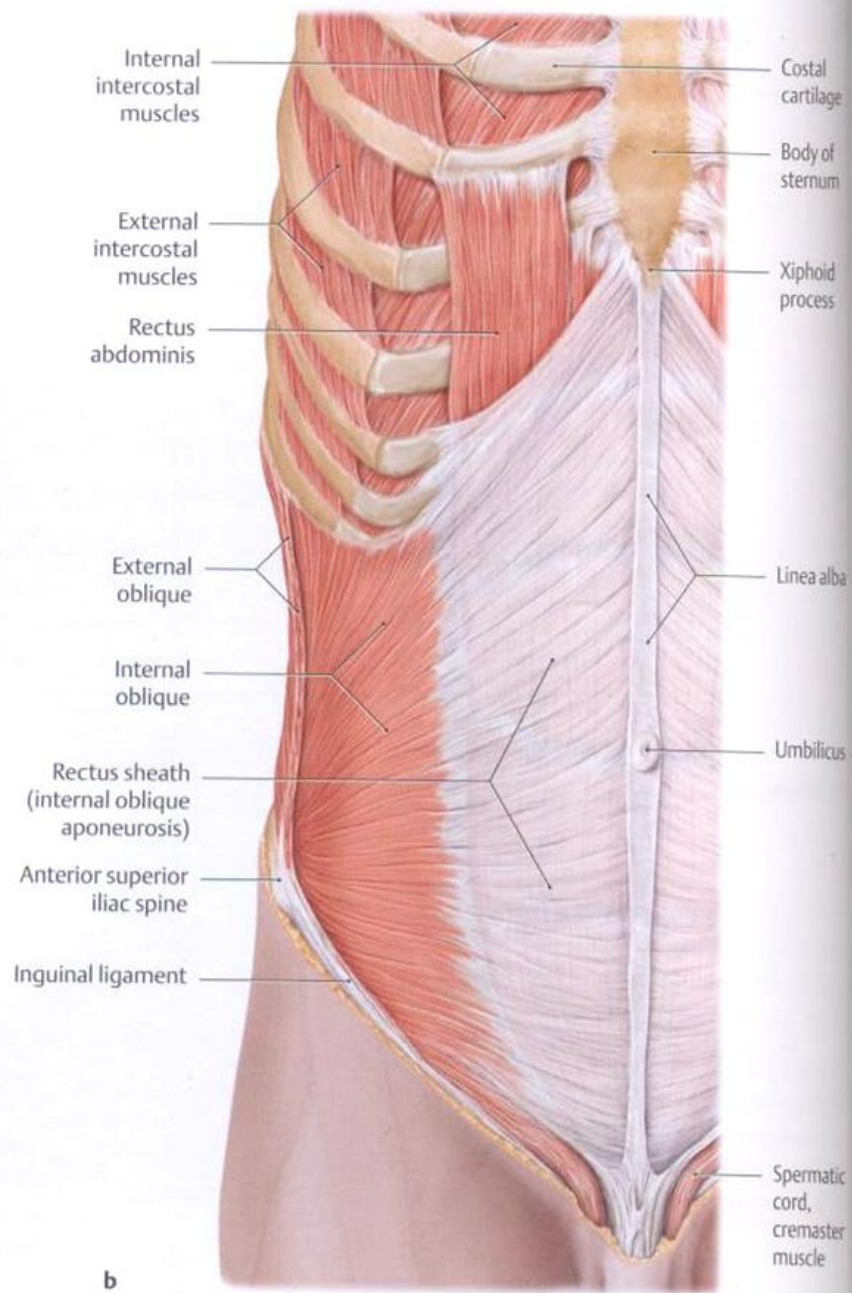
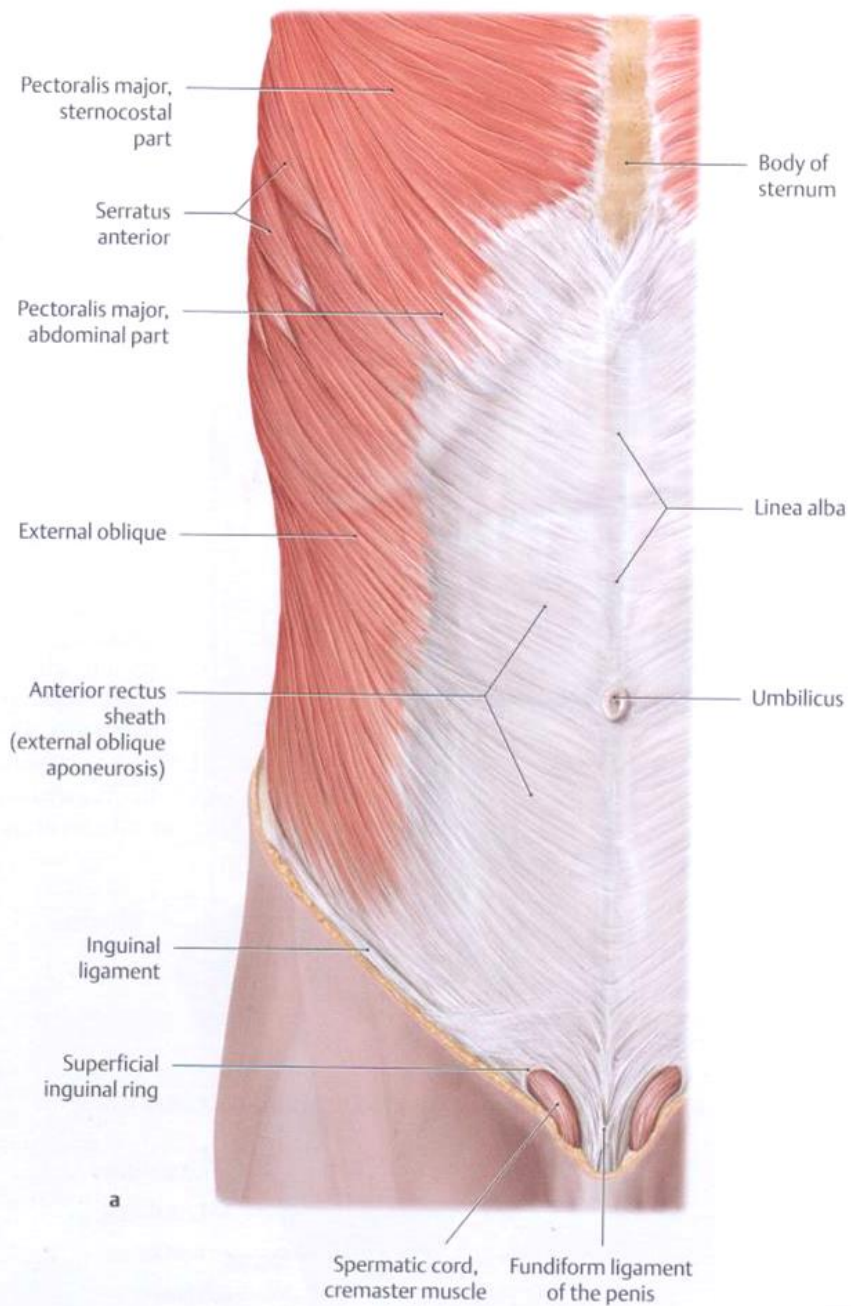
External oblique

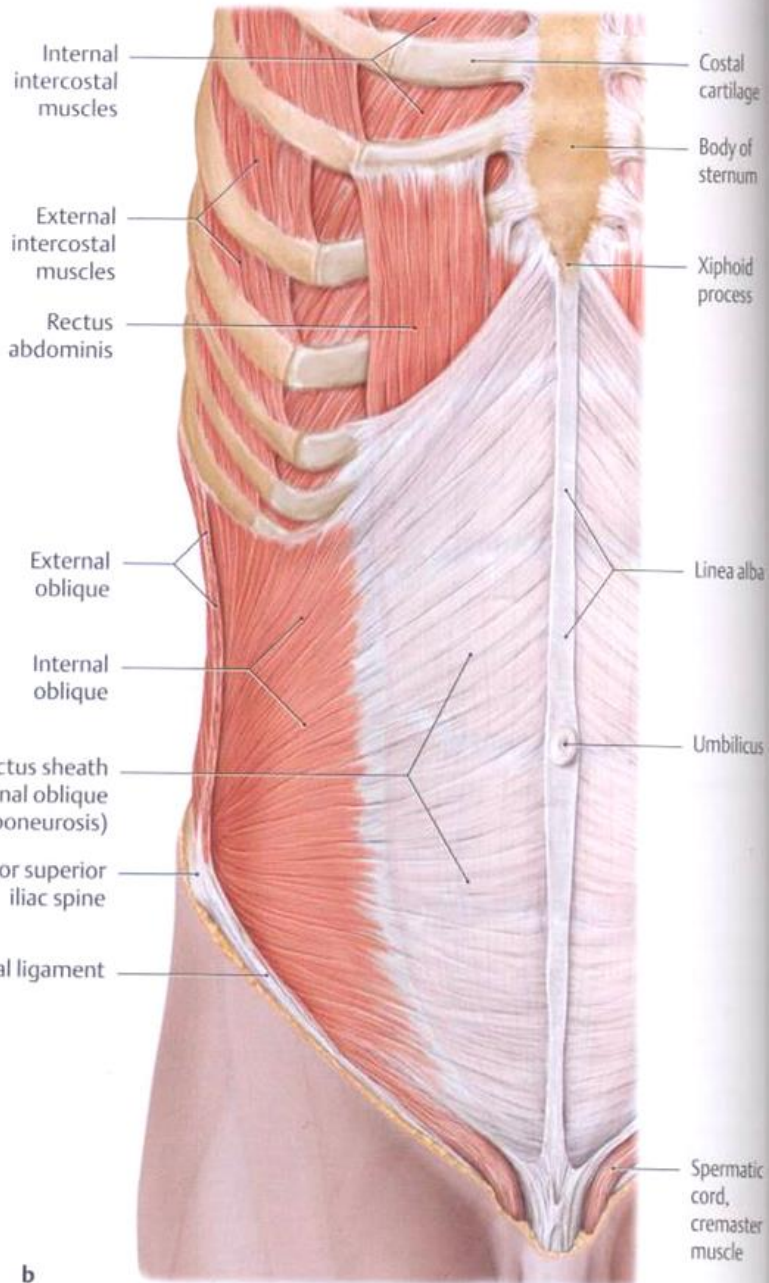
Internal oblique

Superficial abdominal fascia

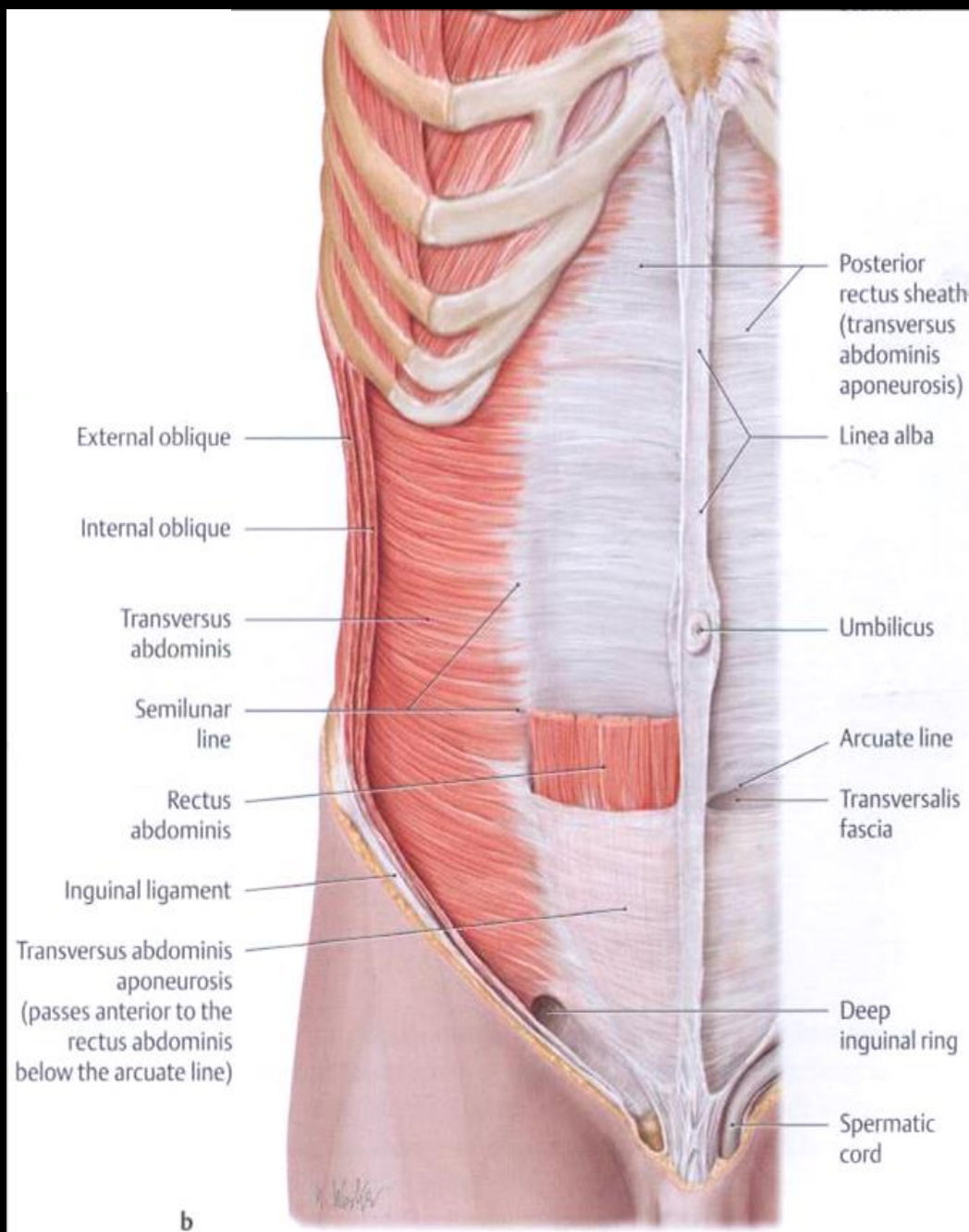
Subcutaneous tissue
Skin



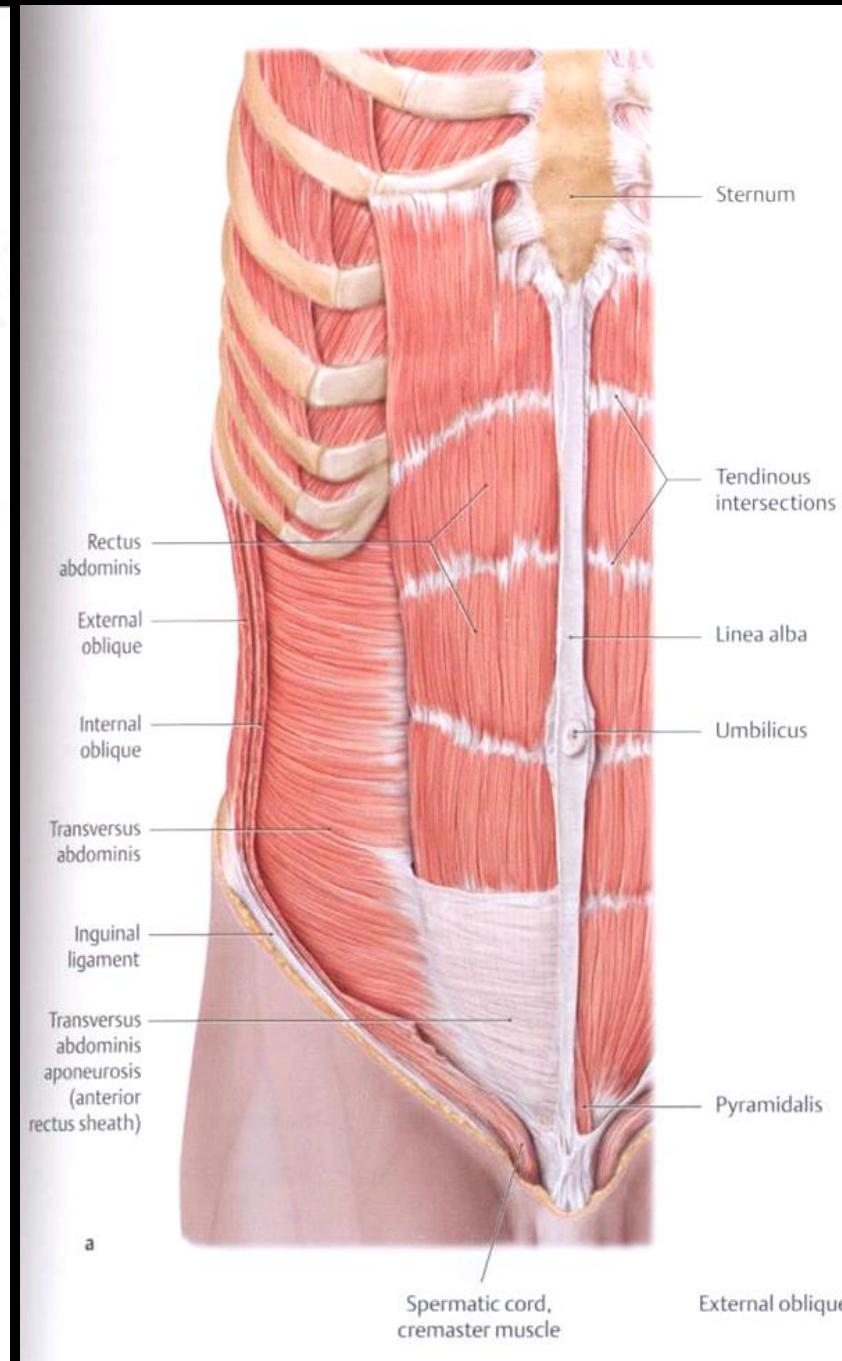
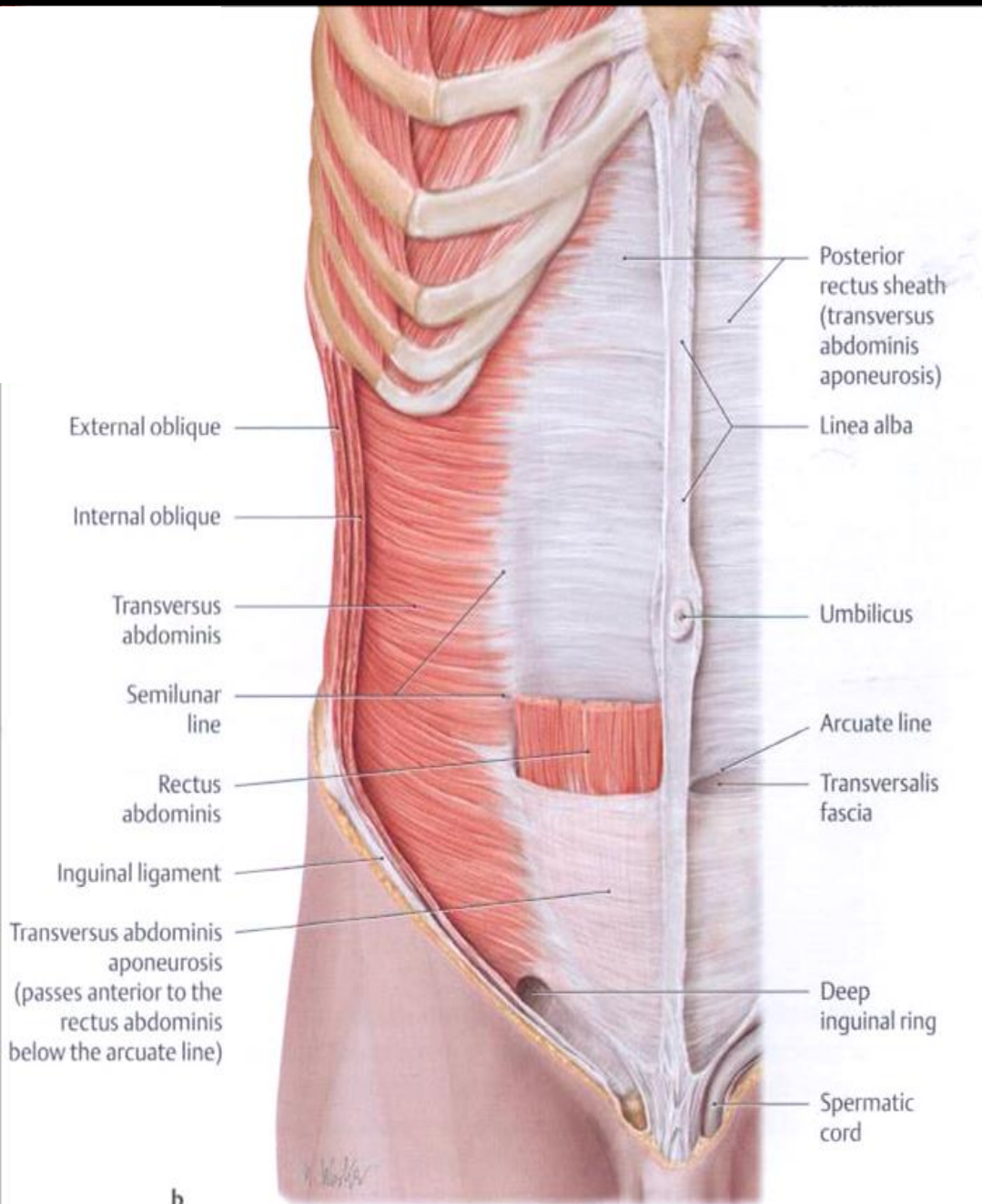


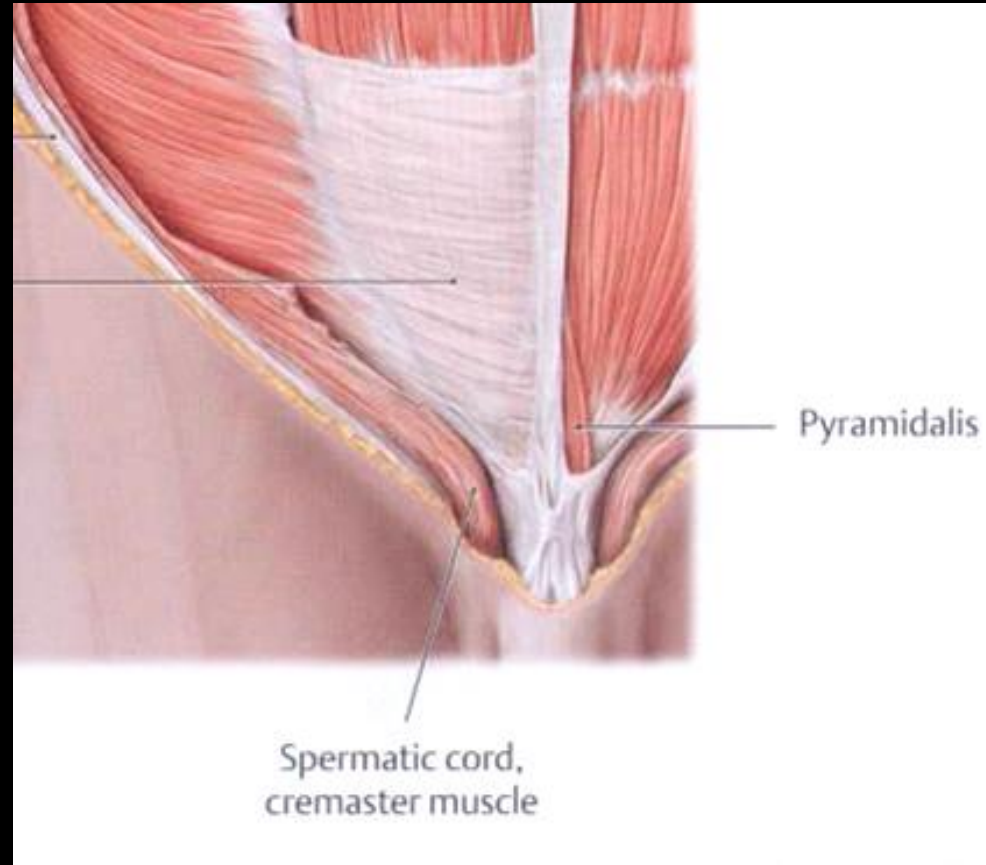
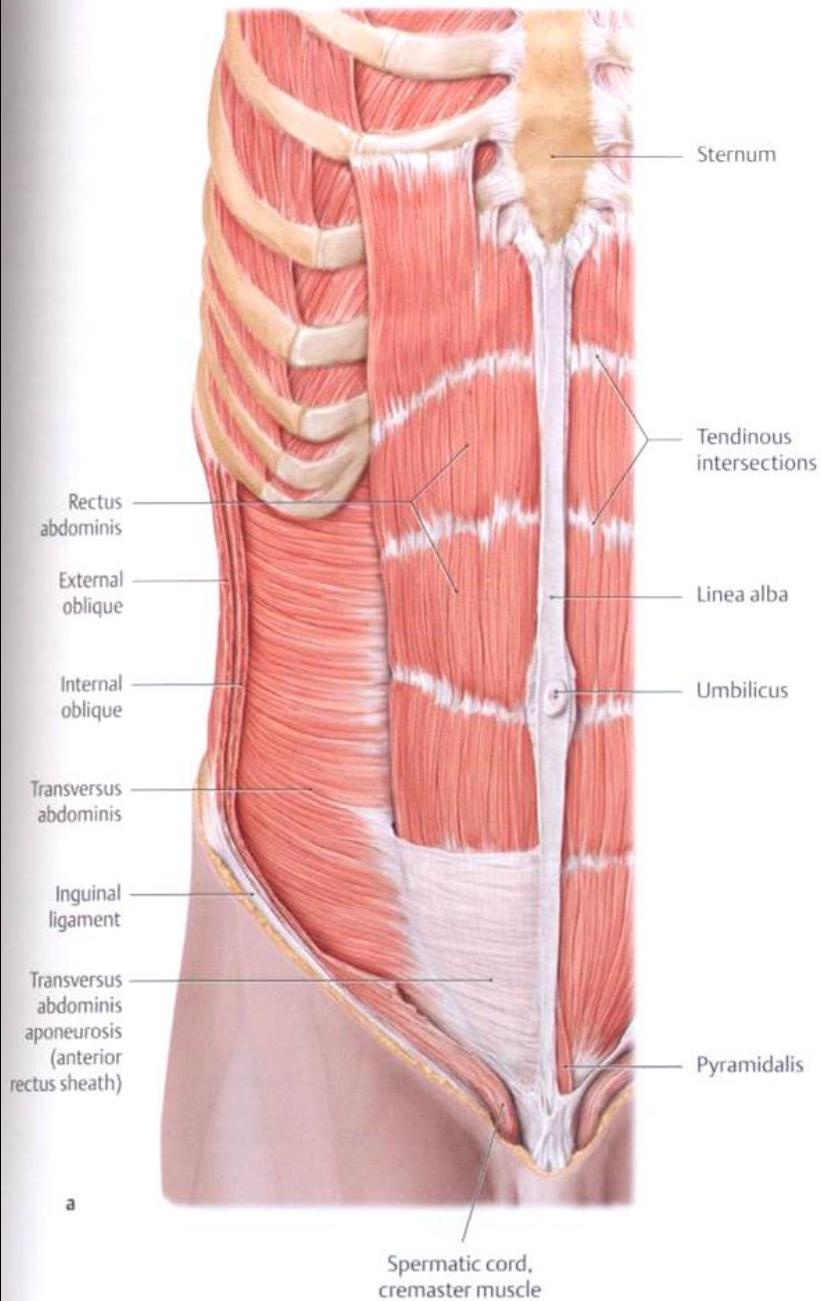


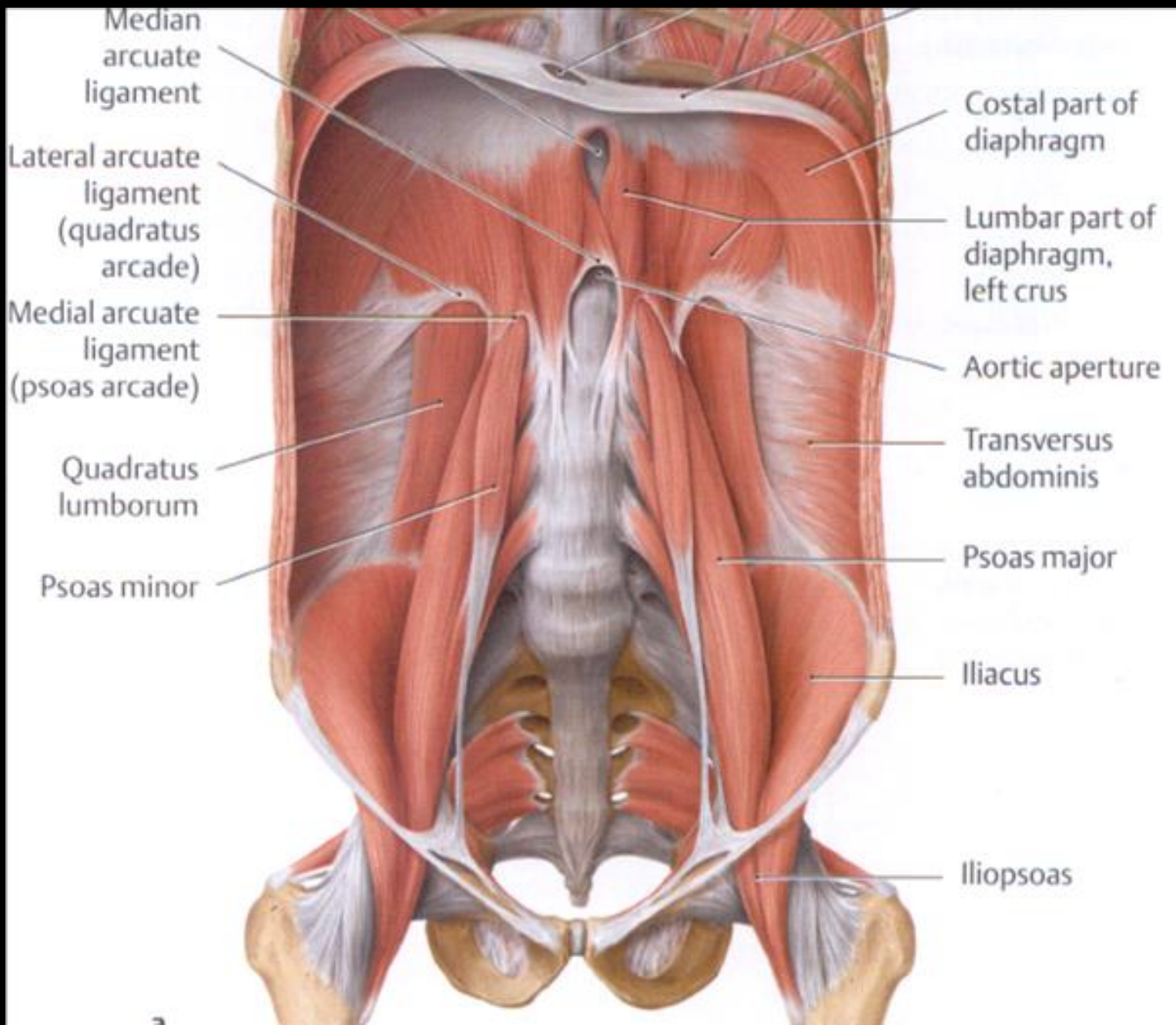
b



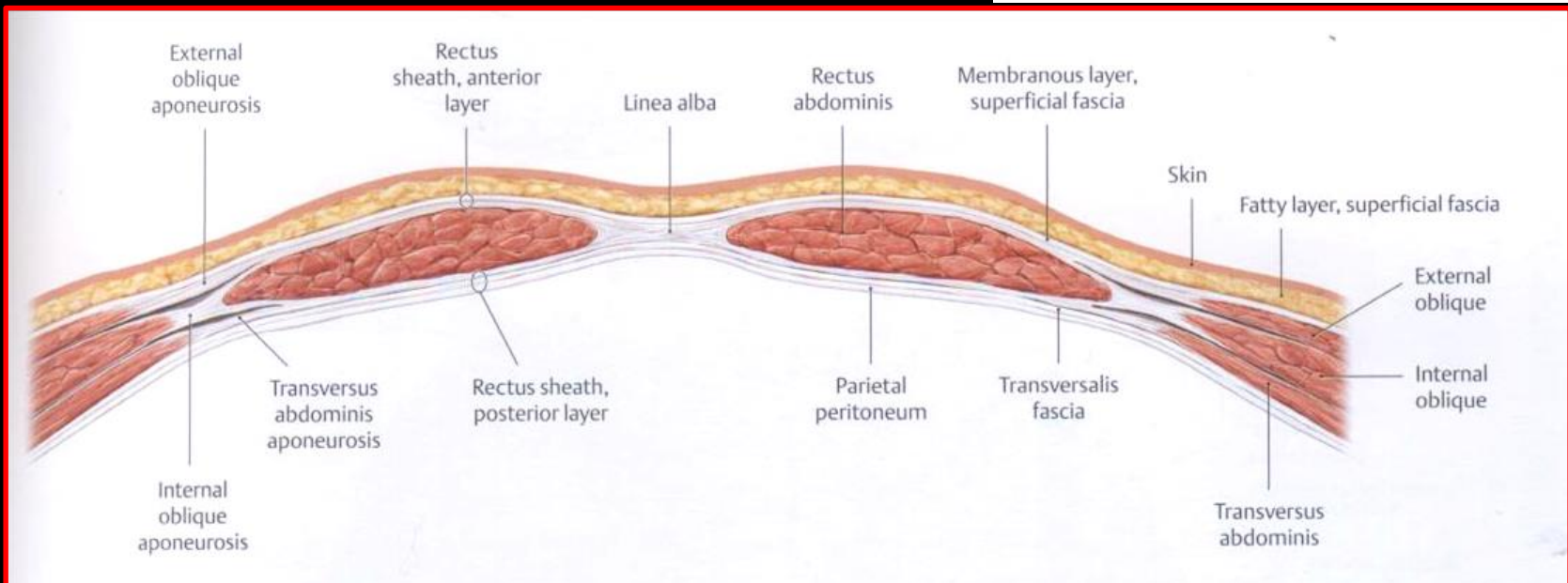
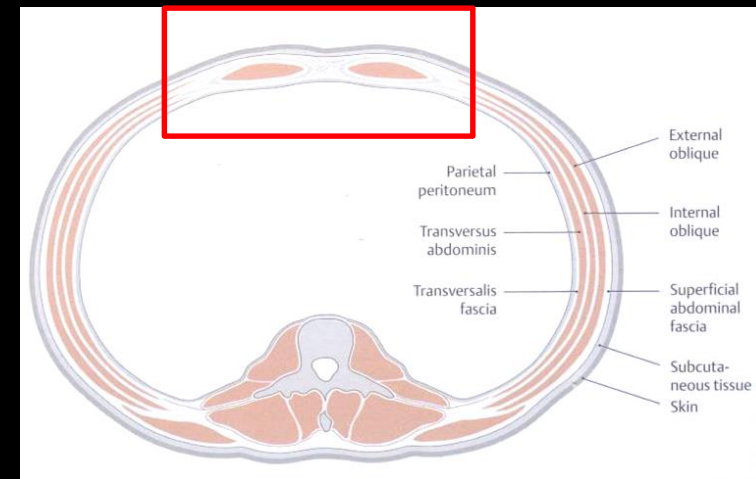
b

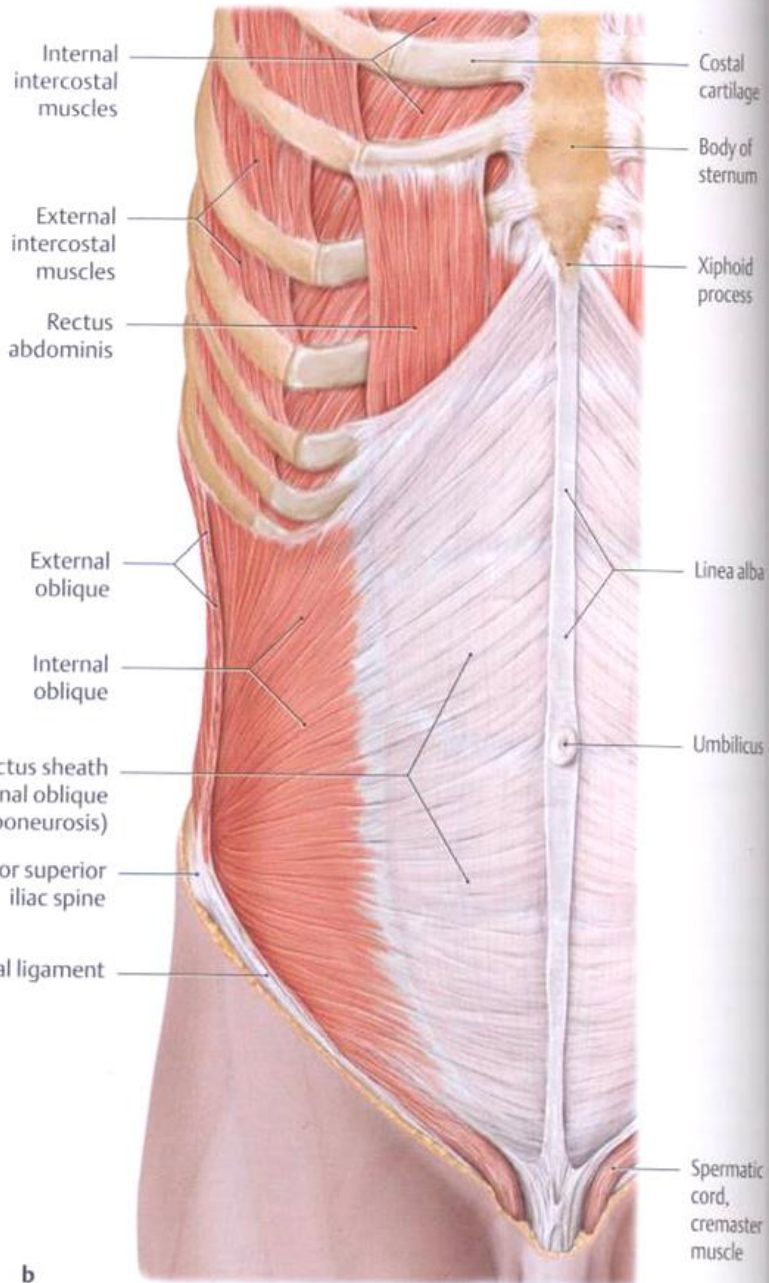




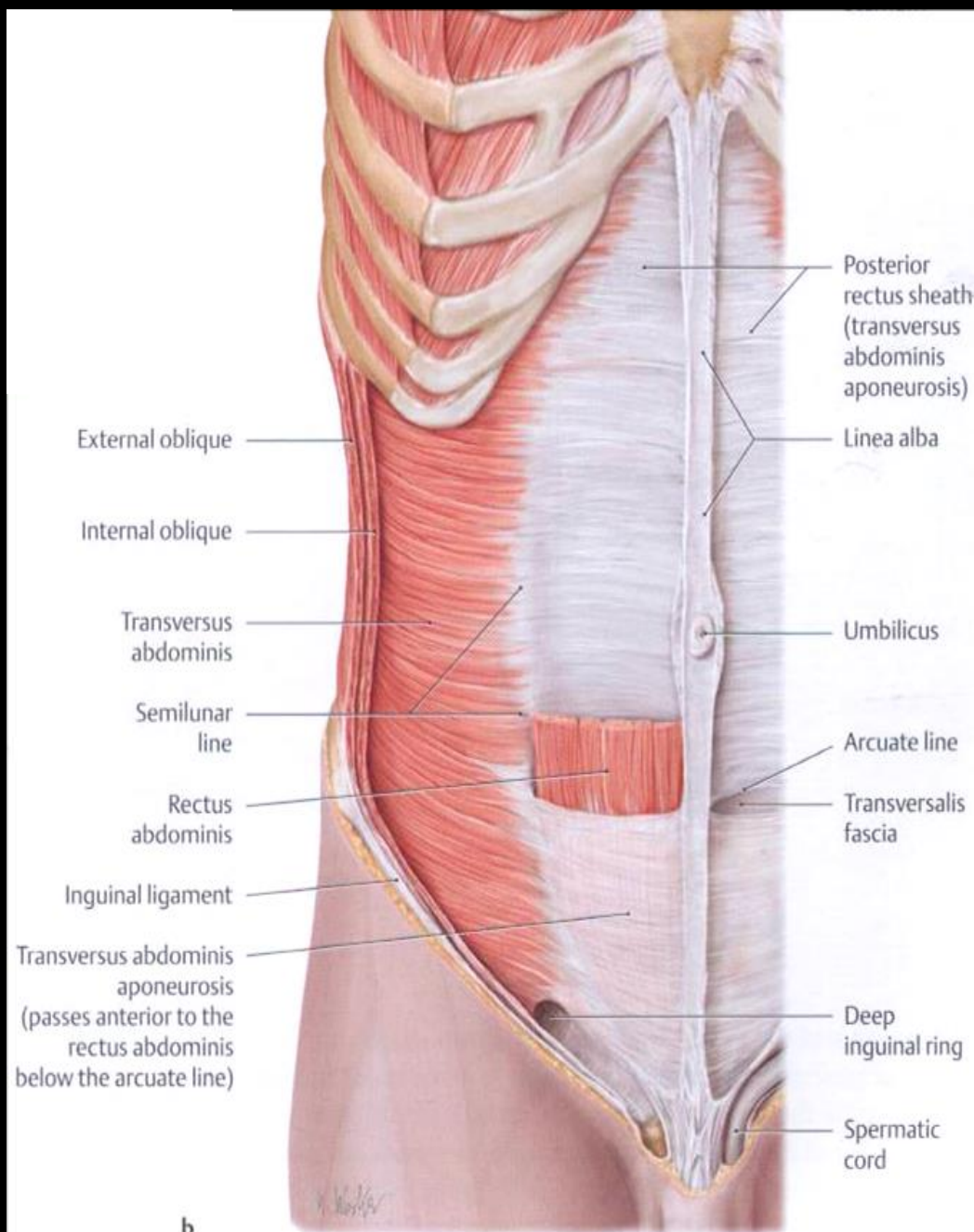


VAGINA MUSCULI RECTI ABDOMINIS (RECTUS-HÜVELY)

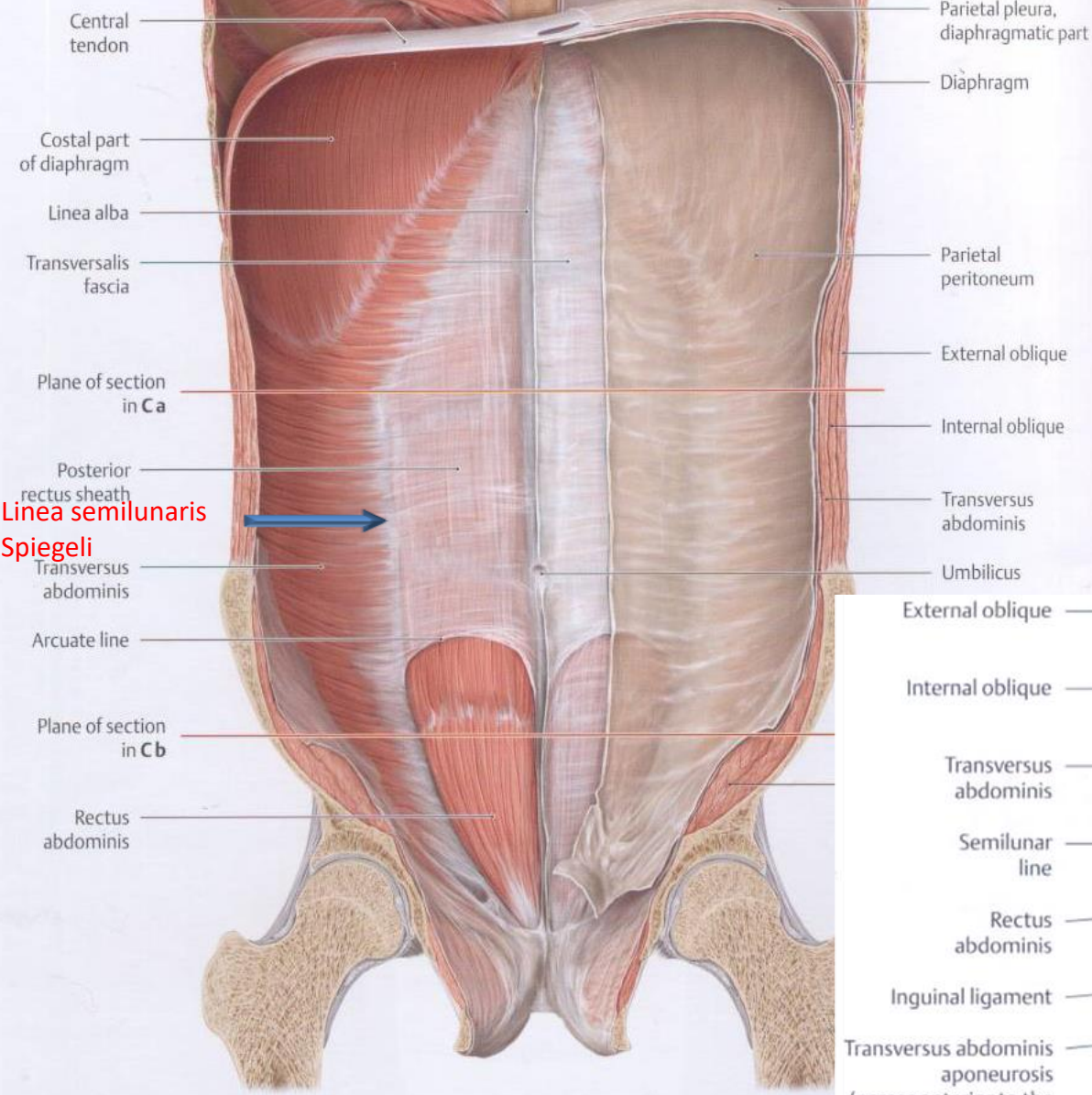




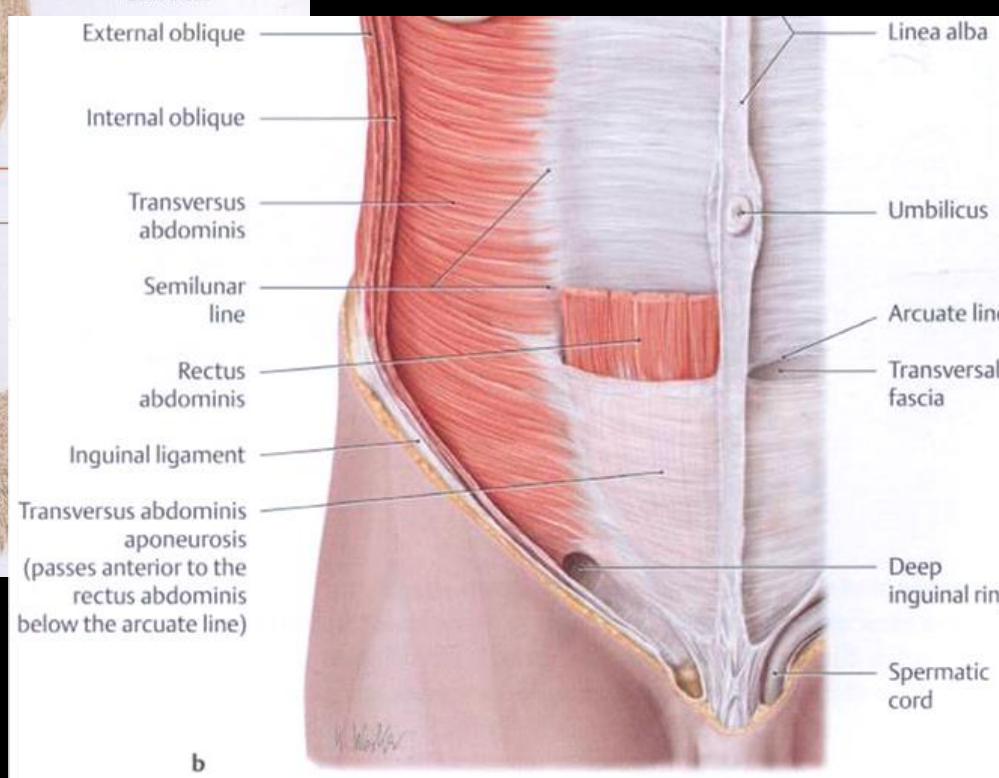
b



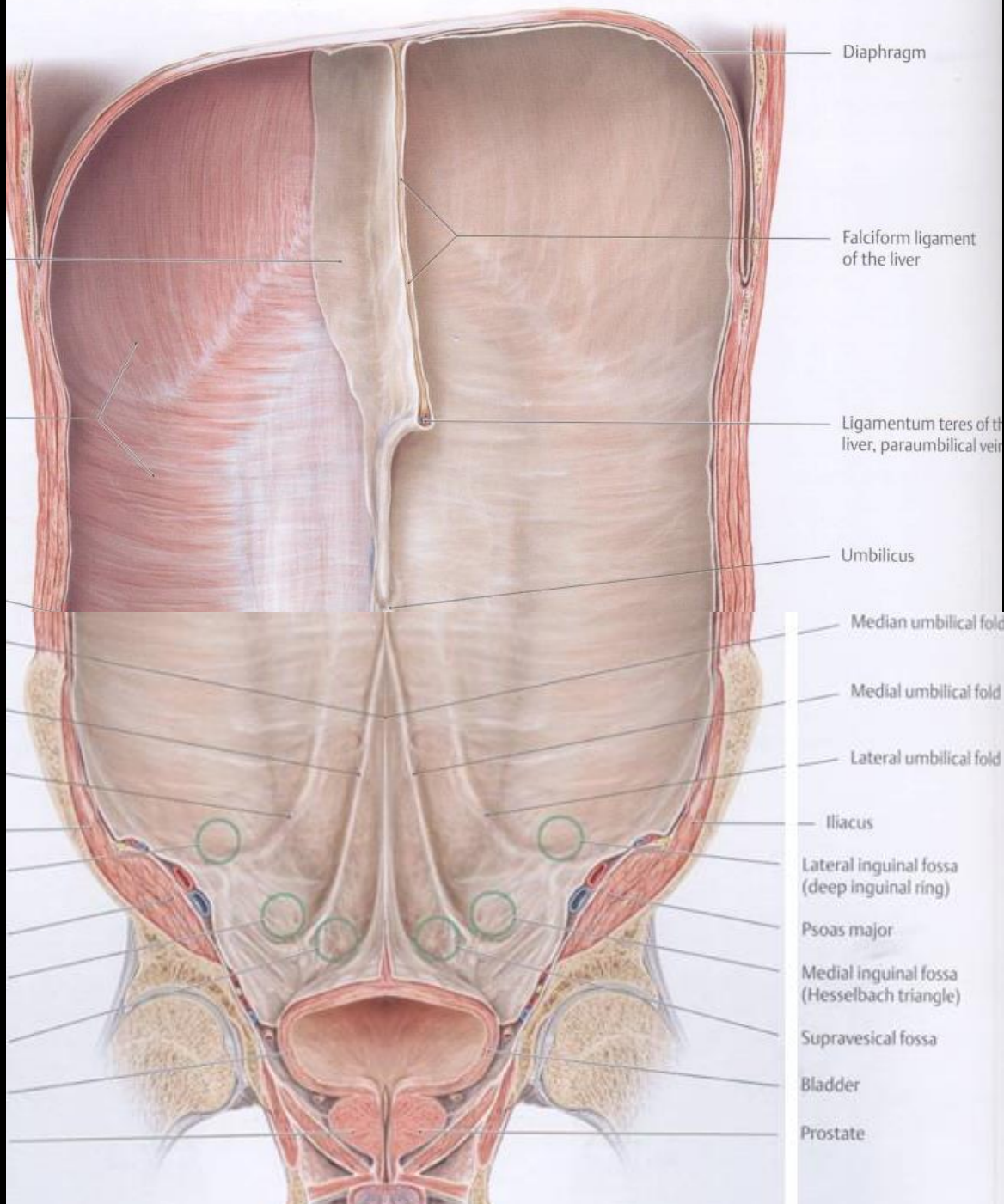
b



Linea semilunaris
Spiegeli



b



Diaphragm

Falciform ligament of the liver

Ligamentum teres of the liver, paraumbilical vein

Umbilicus

Median umbilical fold

Medial umbilical fold

Lateral umbilical fold

Iliacus

Lateral inguinal fossa (deep inguinal ring)

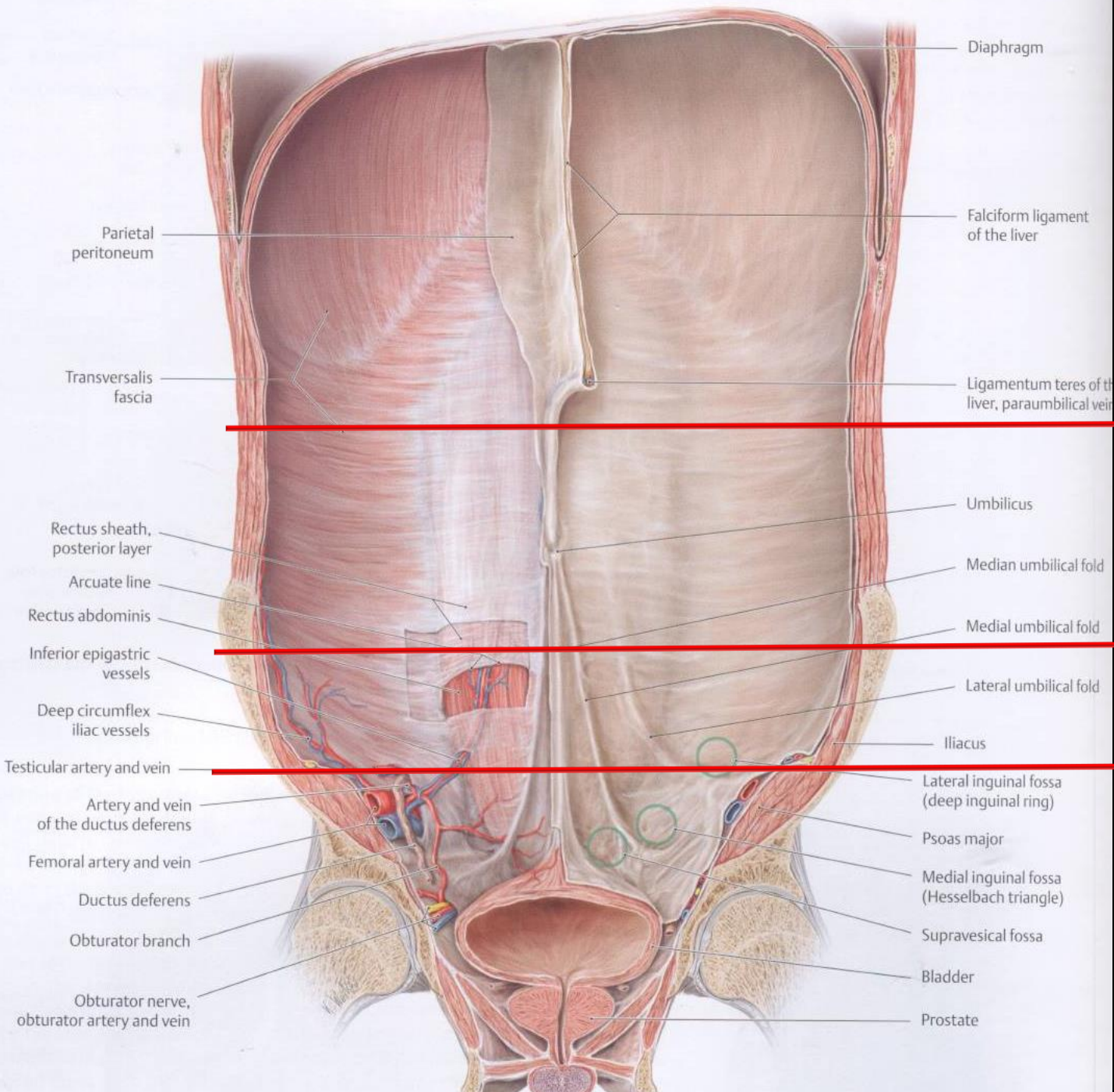
Psoas major

Medial inguinal fossa (Hesselbach triangle)

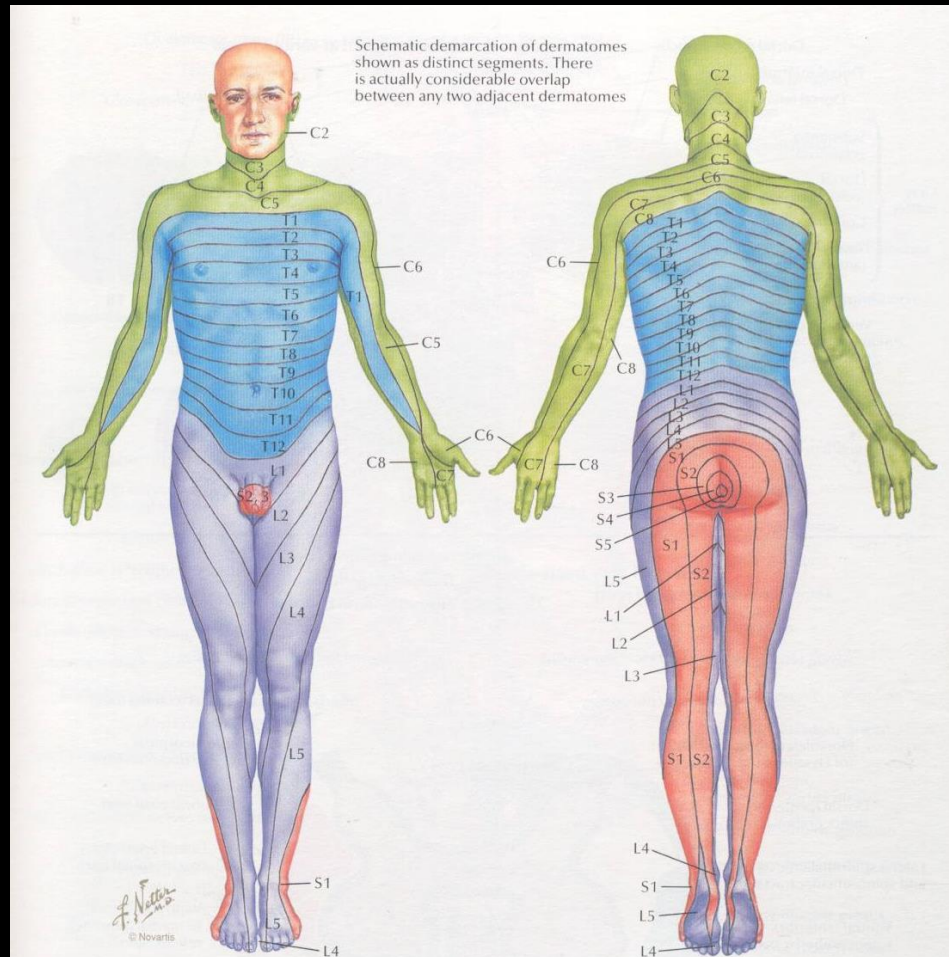
Supravesical fossa

Bladder

Prostate



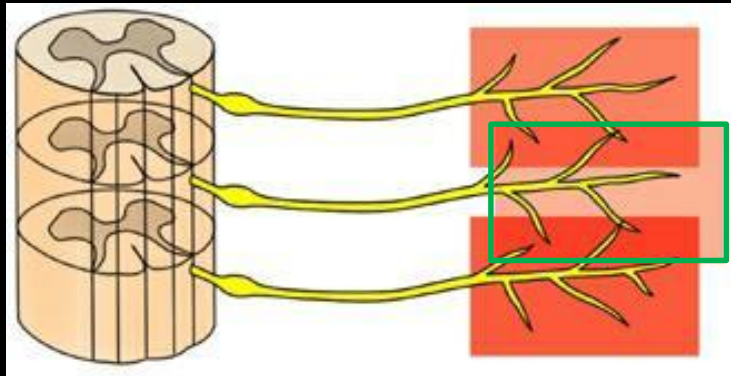
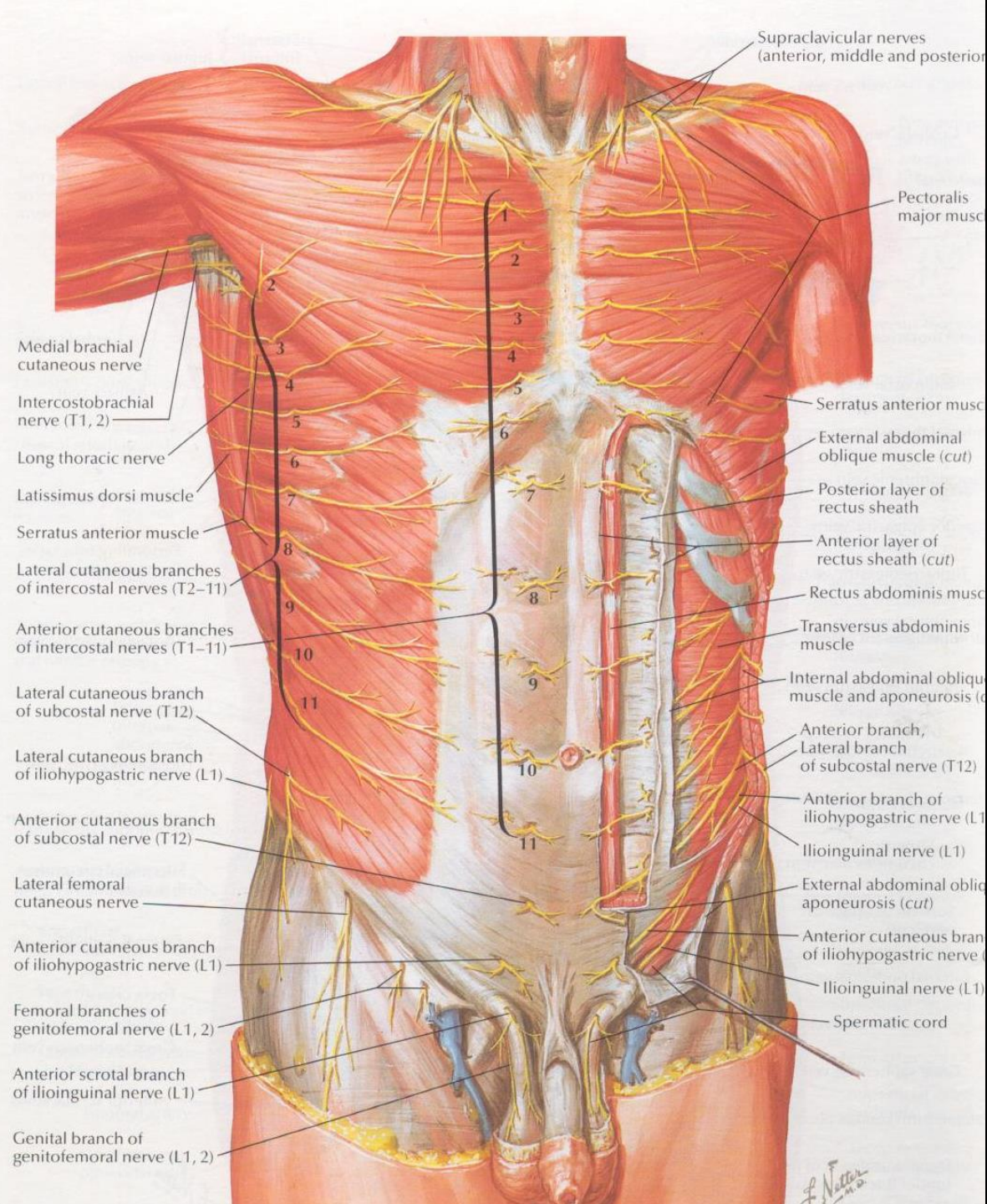
Az izmok beidegzése



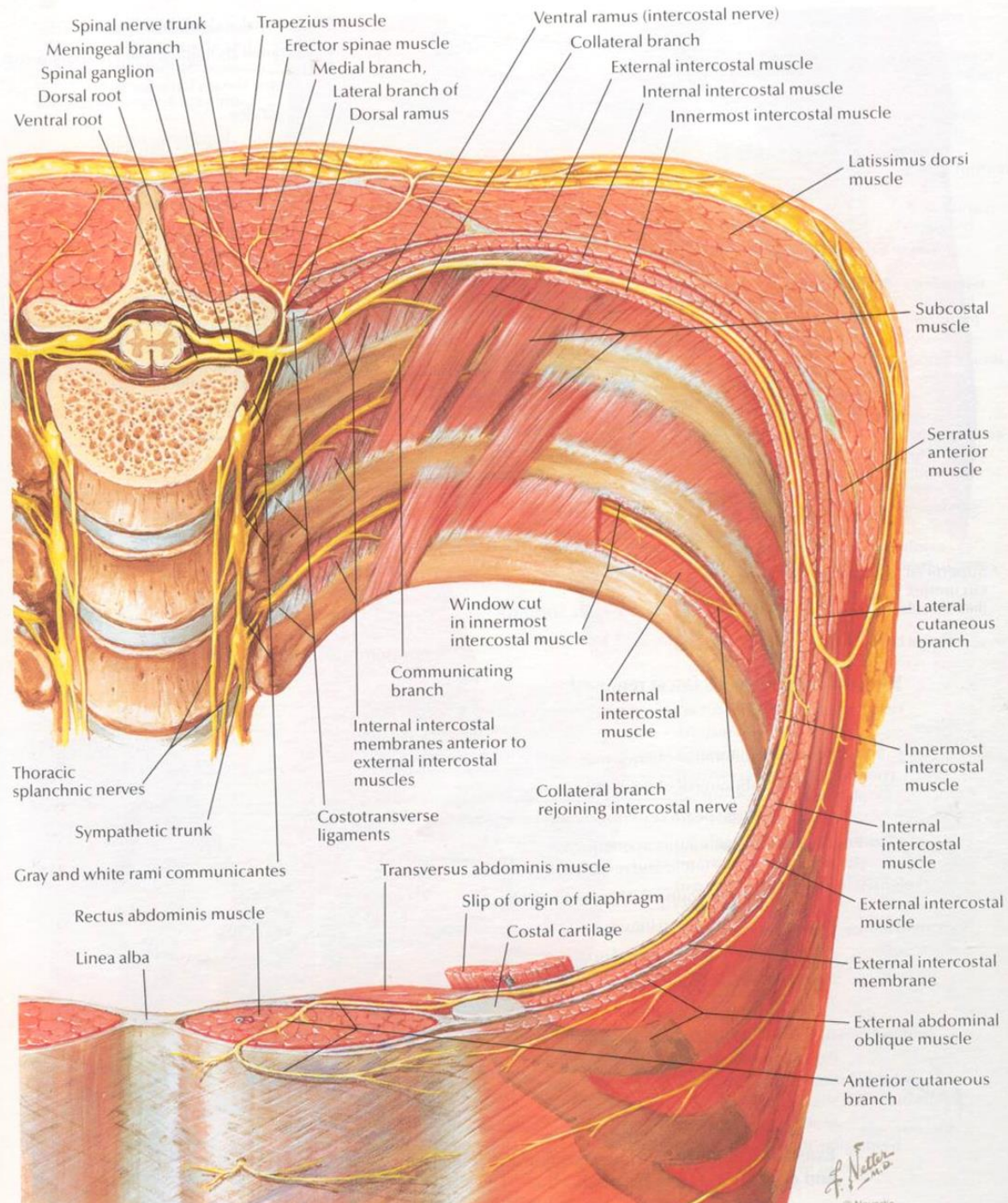
Levels of principal dermatomes

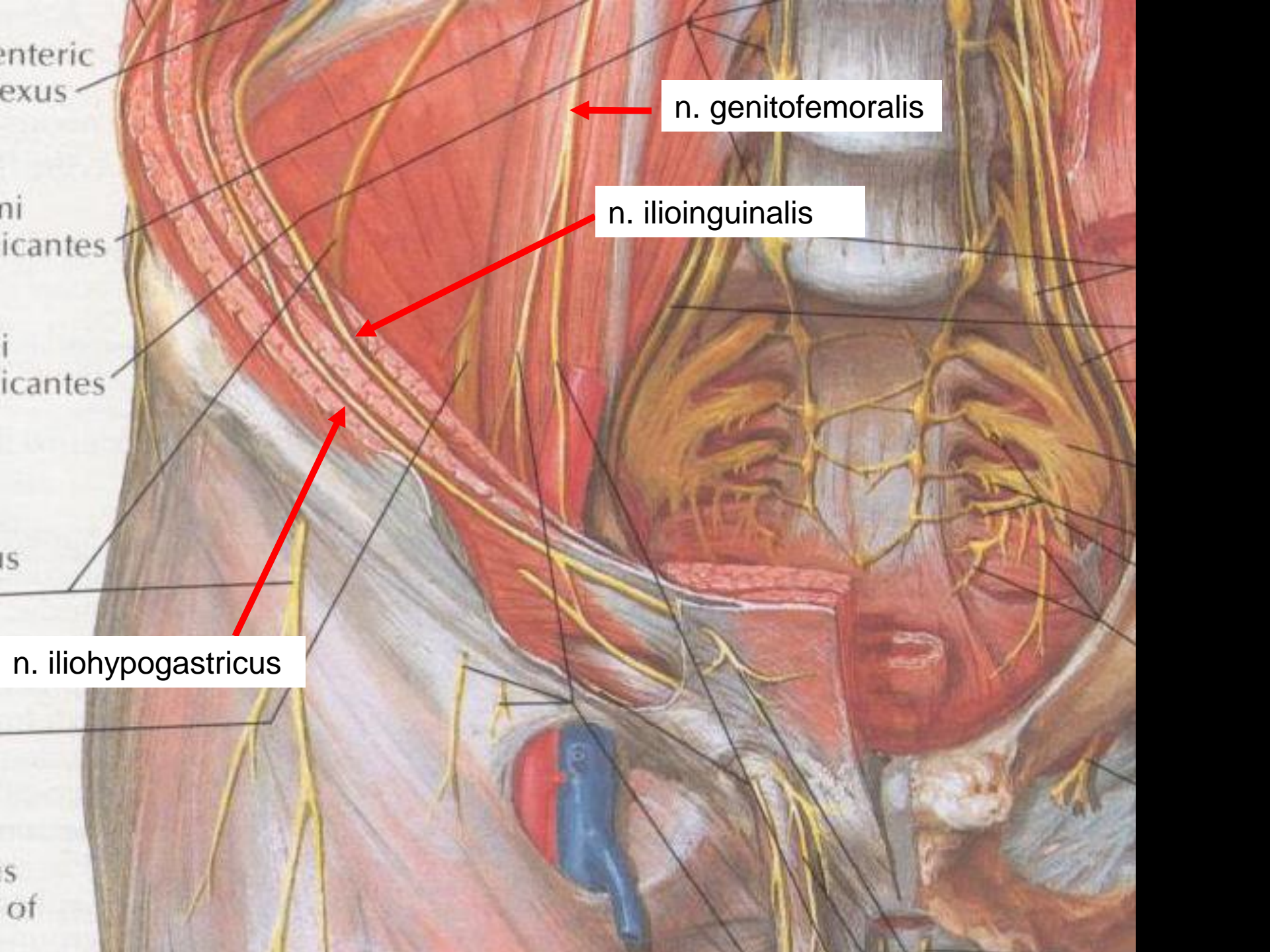
C5 Clavicles
 C5, 6, 7 Lateral parts of upper limbs
 C8, T1 Medial sides of upper limbs
 C6 Thumb
 C6, 7, 8 Hand
 C8 Ring and little fingers
 T4 Level of nipples

T10 Level of umbilicus
 T12 Inguinal or groin regions
 L1, 2, 3, 4 Anterior and inner surfaces of lower limbs
 L4, 5, S1 Foot
 L4 Medial side of great toe
 S1, 2, L5 Posterior and outer surfaces of lower limbs
 S1 Lateral margin of foot and little toe
 S2, 3, 4 Perineum



W. Netter M.D.





enteric
exus

ni
icantes

i
icantes

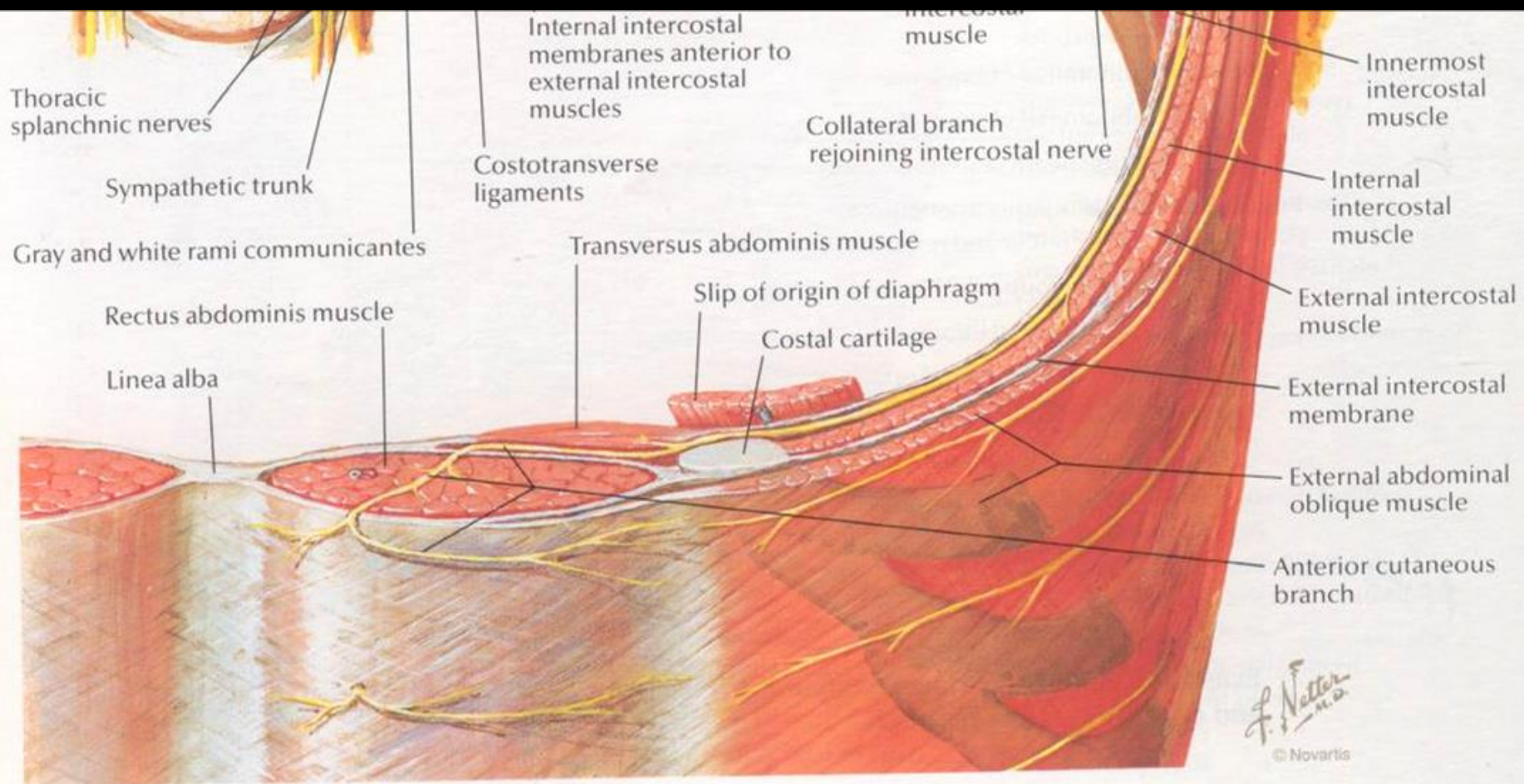
is

n. iliohypogastricus

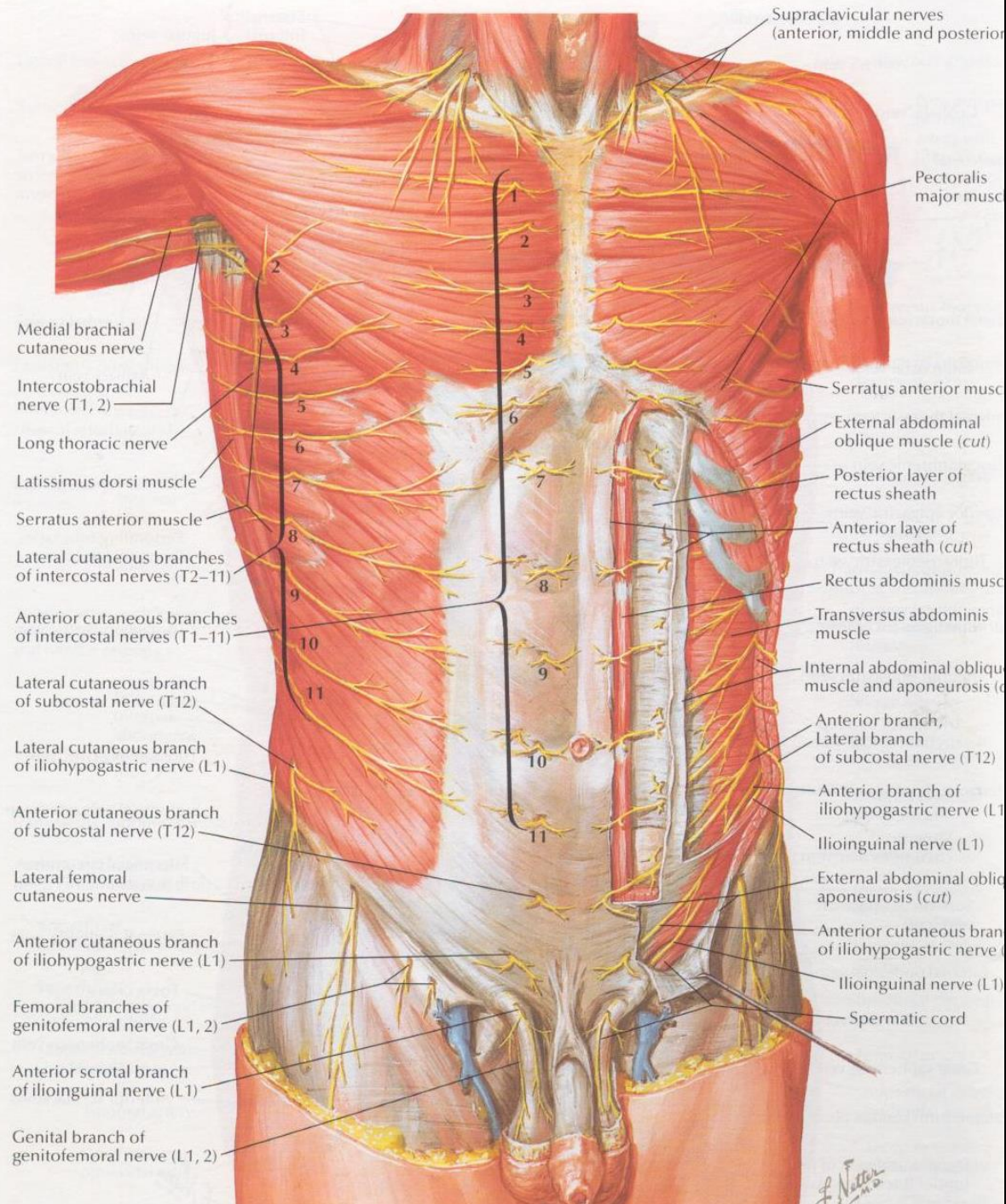
s
of

n. genitofemoralis

n. ilioinguinalis



F. Netter M.D.
© Novartis



Supraclavicular nerves
(anterior, middle and posterior)

Pectoralis major muscle

Medial brachial cutaneous nerve

Intercostobrachial nerve (T1, 2)

Long thoracic nerve

Latissimus dorsi muscle

Serratus anterior muscle

Lateral cutaneous branches of intercostal nerves (T2-11)

Anterior cutaneous branches of intercostal nerves (T1-11)

Lateral cutaneous branch of subcostal nerve (T12)

Lateral cutaneous branch of iliohypogastric nerve (L1)

Anterior cutaneous branch of subcostal nerve (T12)

Lateral femoral cutaneous nerve

Anterior cutaneous branch of iliohypogastric nerve (L1)

Femoral branches of genitofemoral nerve (L1, 2)

Anterior scrotal branch of ilioinguinal nerve (L1)

Genital branch of genitofemoral nerve (L1, 2)

Serratus anterior muscle

External abdominal oblique muscle (cut)

Posterior layer of rectus sheath

Anterior layer of rectus sheath (cut)

Rectus abdominis muscle

Transversus abdominis muscle

Internal abdominal oblique muscle and aponeurosis (cut)

Anterior branch, Lateral branch of subcostal nerve (T12)

Anterior branch of iliohypogastric nerve (L1)

Ilioinguinal nerve (L1)

External abdominal oblique aponeurosis (cut)

Anterior cutaneous branch of iliohypogastric nerve (L1)

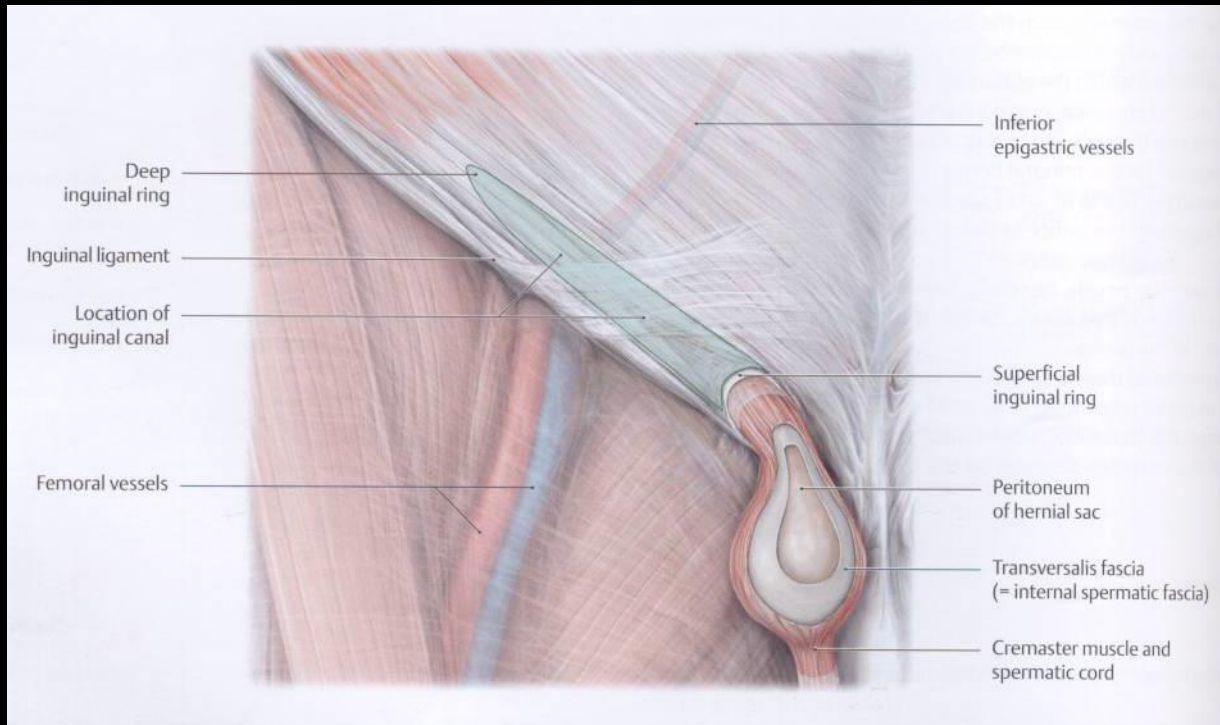
Ilioinguinal nerve (L1)

Spermatic cord

F. Netter M.D.

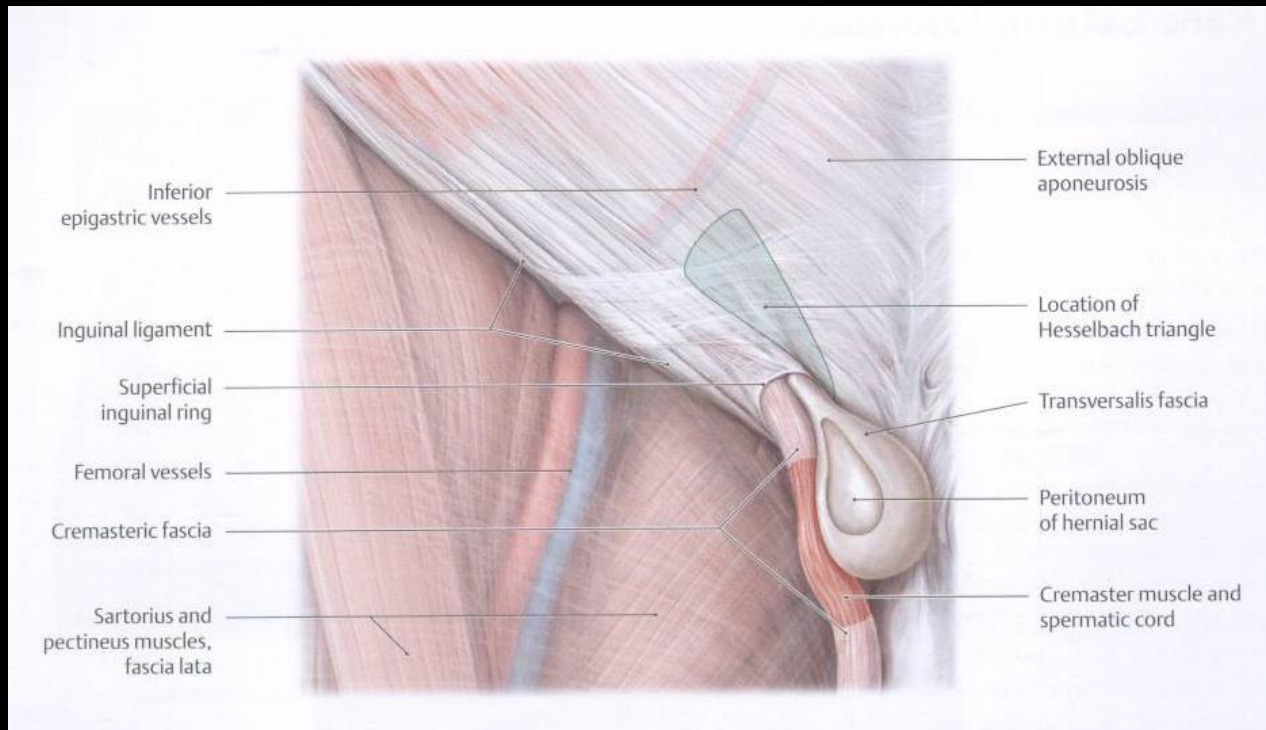
A hasfal gyenge pontjai (locus minoris resistentiae abdominis)

Hernia inguinalis lateralis/indirecta



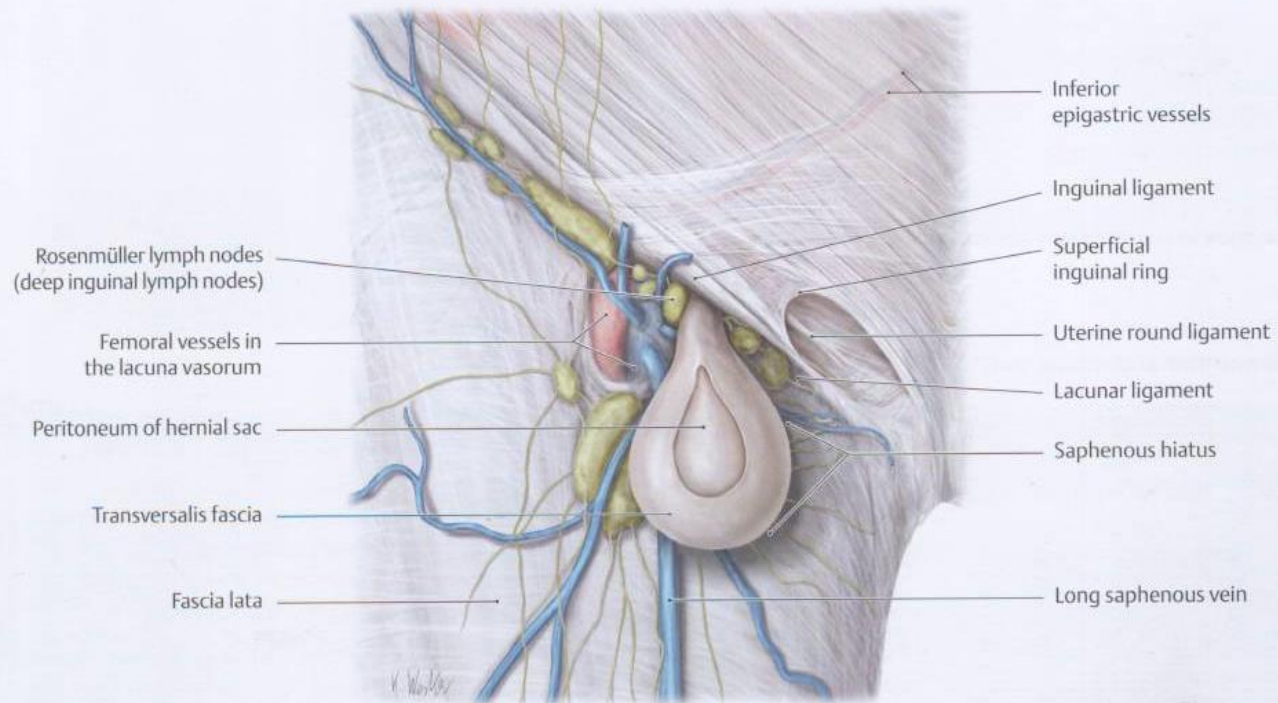
A hasfal gyenge pontjai (locus minoris resistentiae abdominis)

Hernia inguinalis medialis/directa



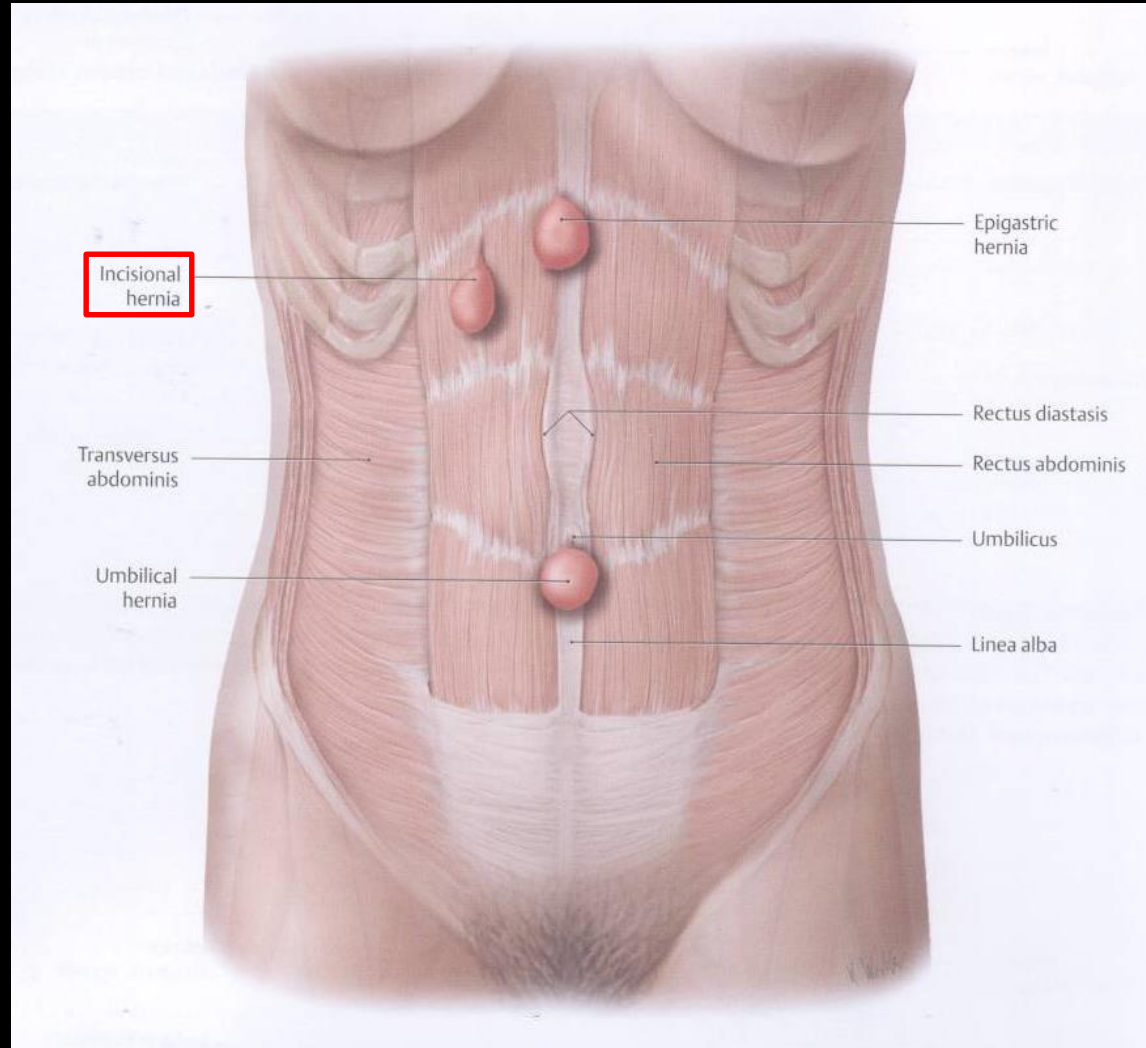
A hasfal gyenge pontjai (locus minoris resistentiae abdominis)

Hernia femoralis



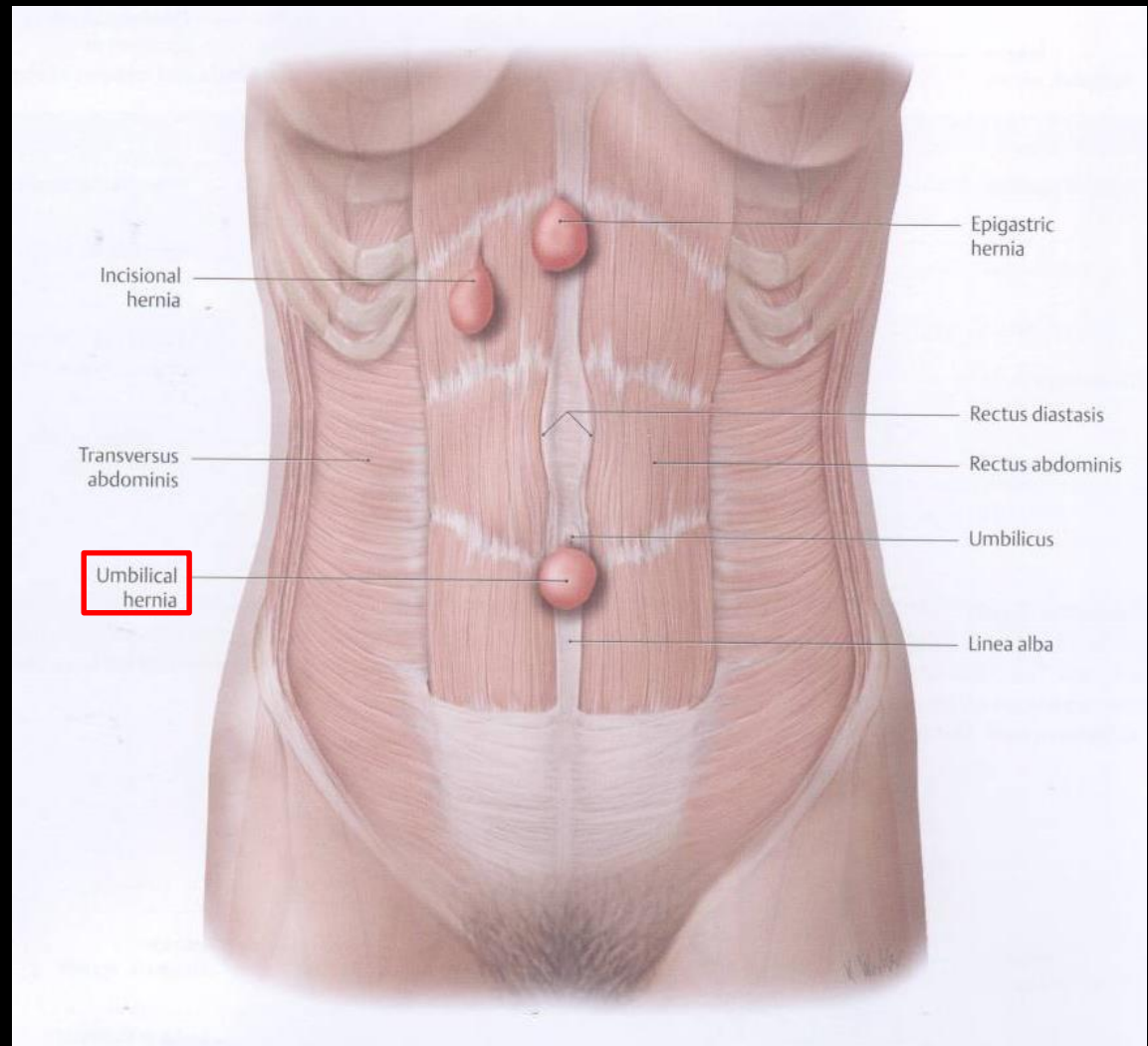
A hasfal gyenge pontjai (locus minoris resistentiae abdominis)

Hernia postoperativa/incisionalis



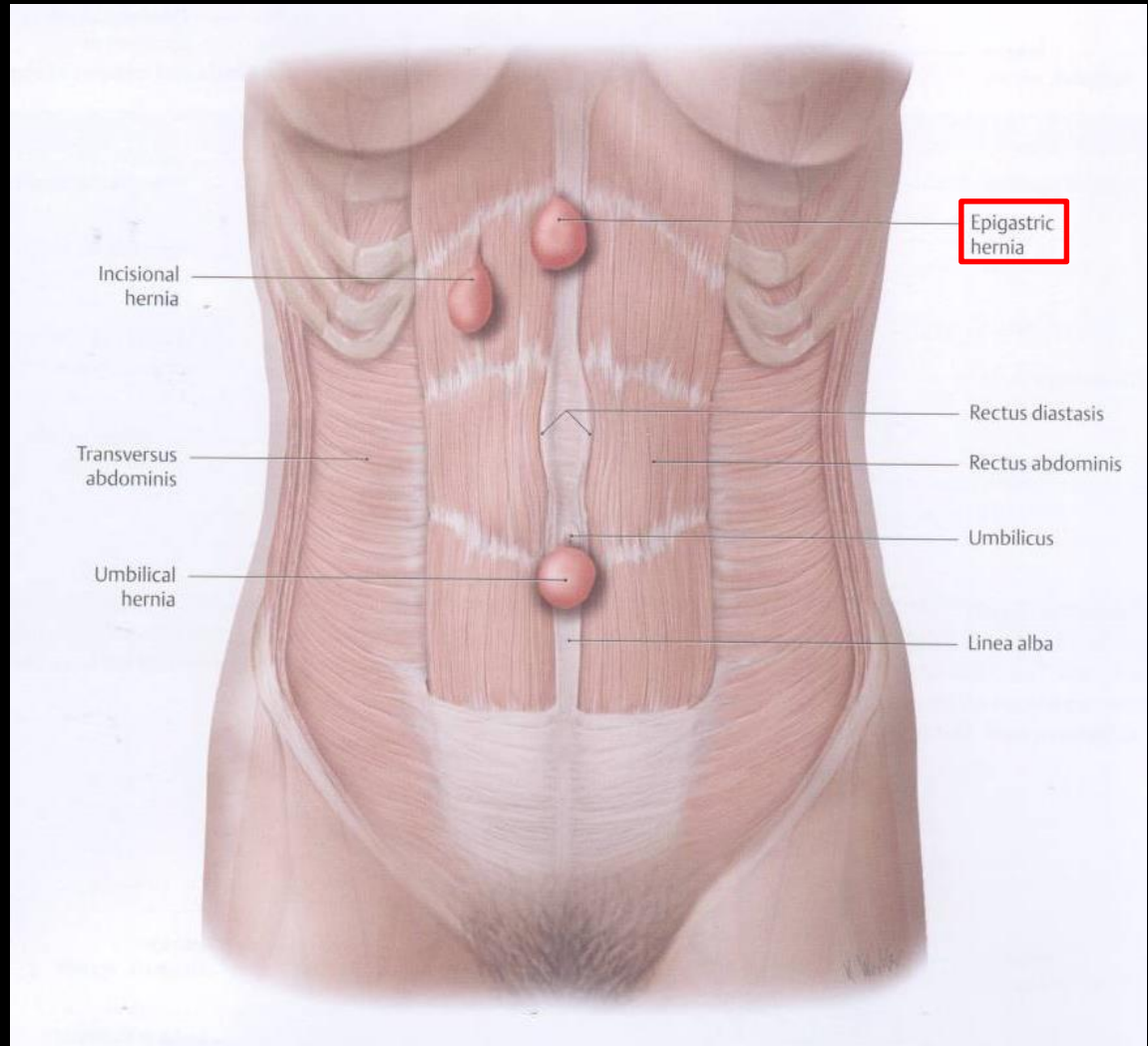
A hasfal gyenge pontjai (locus minoris resistentiae abdominis)

Hernia umbilicalis



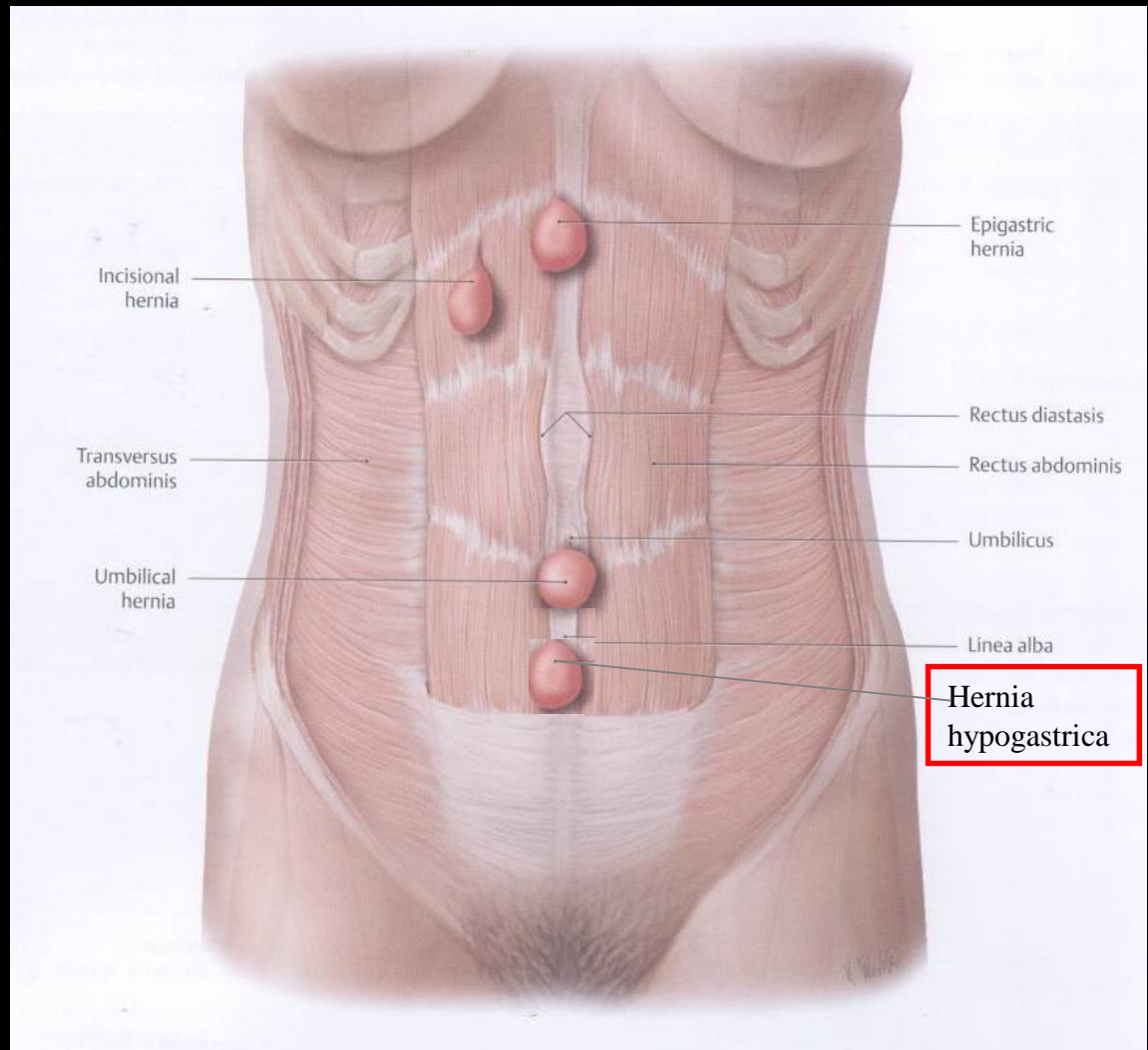
A hasfal gyenge pontjai (locus minoris resistentiae abdominis)

Hernia epigastrica



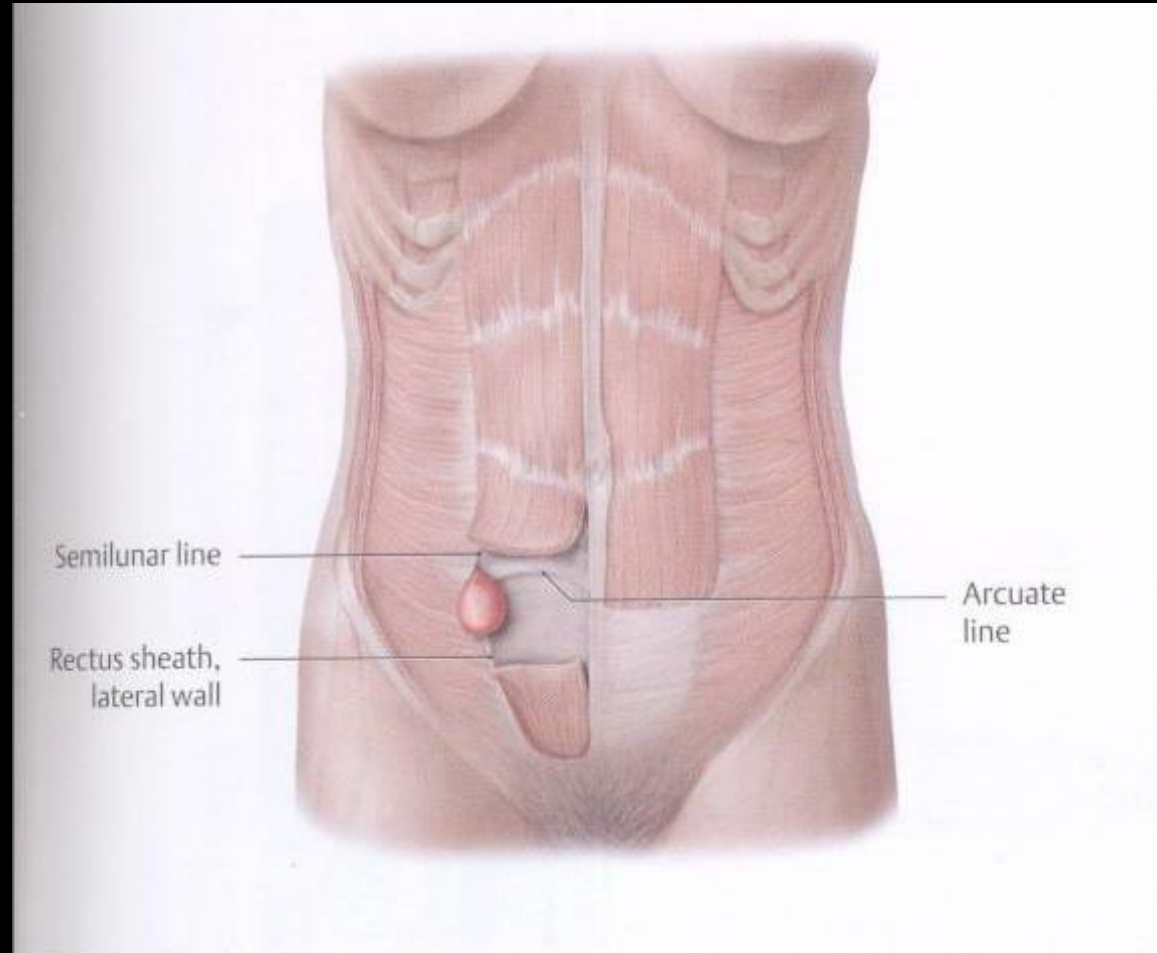
A hasfal gyenge pontjai (locus minoris resistentiae abdominis)

Hernia hypogastrica



A hasfal gyenge pontjai (locus minoris resistentiae abdominis)

Hernia semilunaris
(Spiegel-féle sérv)



A hasfal gyenge pontjai (locus minoris resistentiae abdominis)

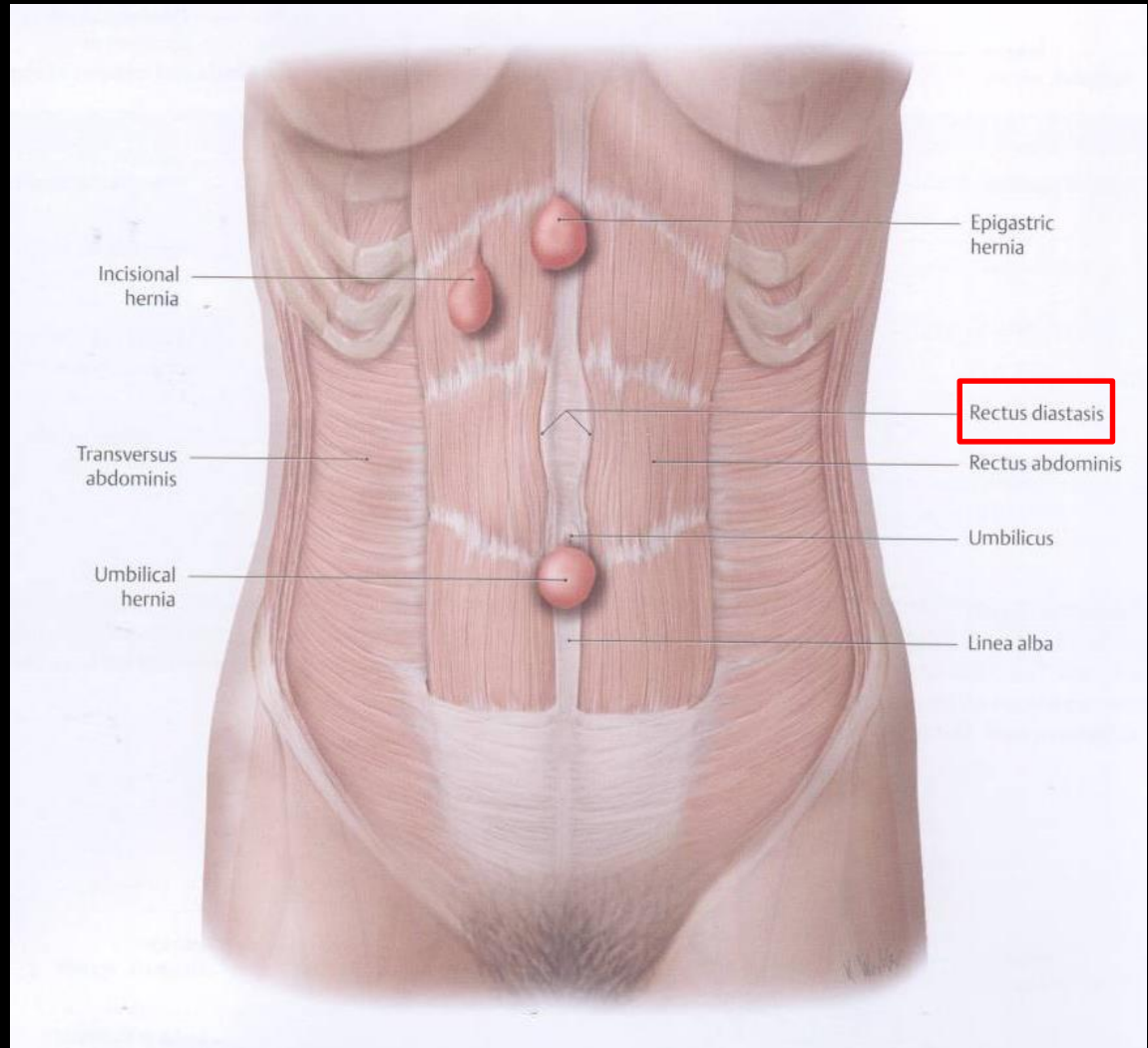
Hernia lumbalis inferior
(Petit-féle sérv)

Hernia lumbalis superior
(Grynfelt-féle sérv)



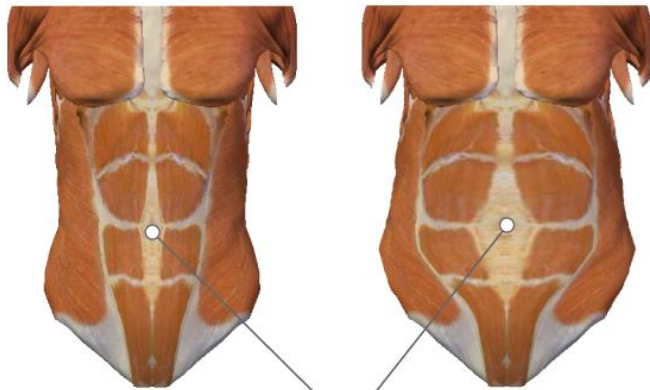
A hasfal gyenge pontjai (locus minoris resistentiae abdominis)

Rectus diastasis



A hasfal gyenge pontjai (locus minoris resistentiae abdominis)

Rectus diastasis



Separation of the Rectus Abdominis
as the abdomen expands

