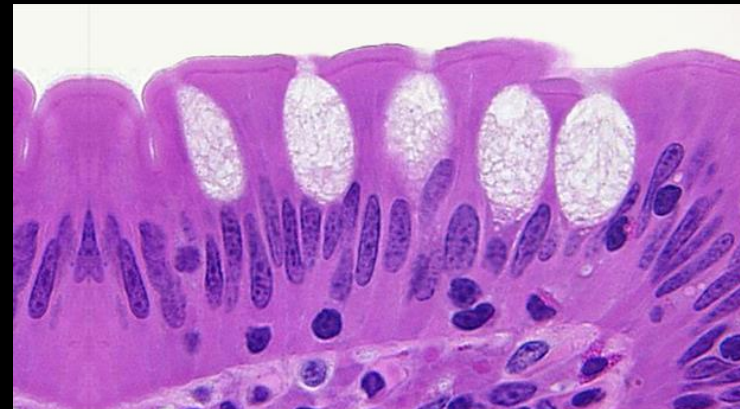
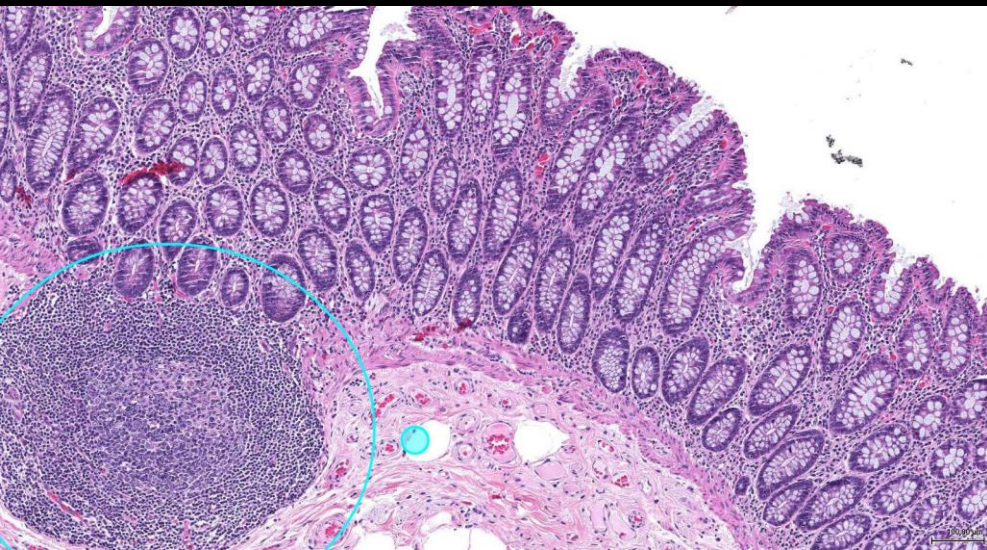
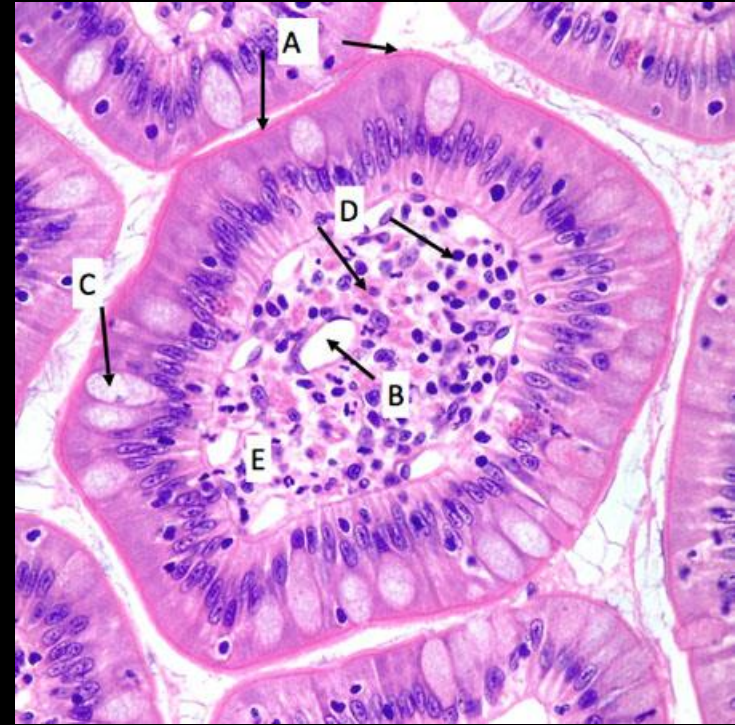


# Glandular epithelium

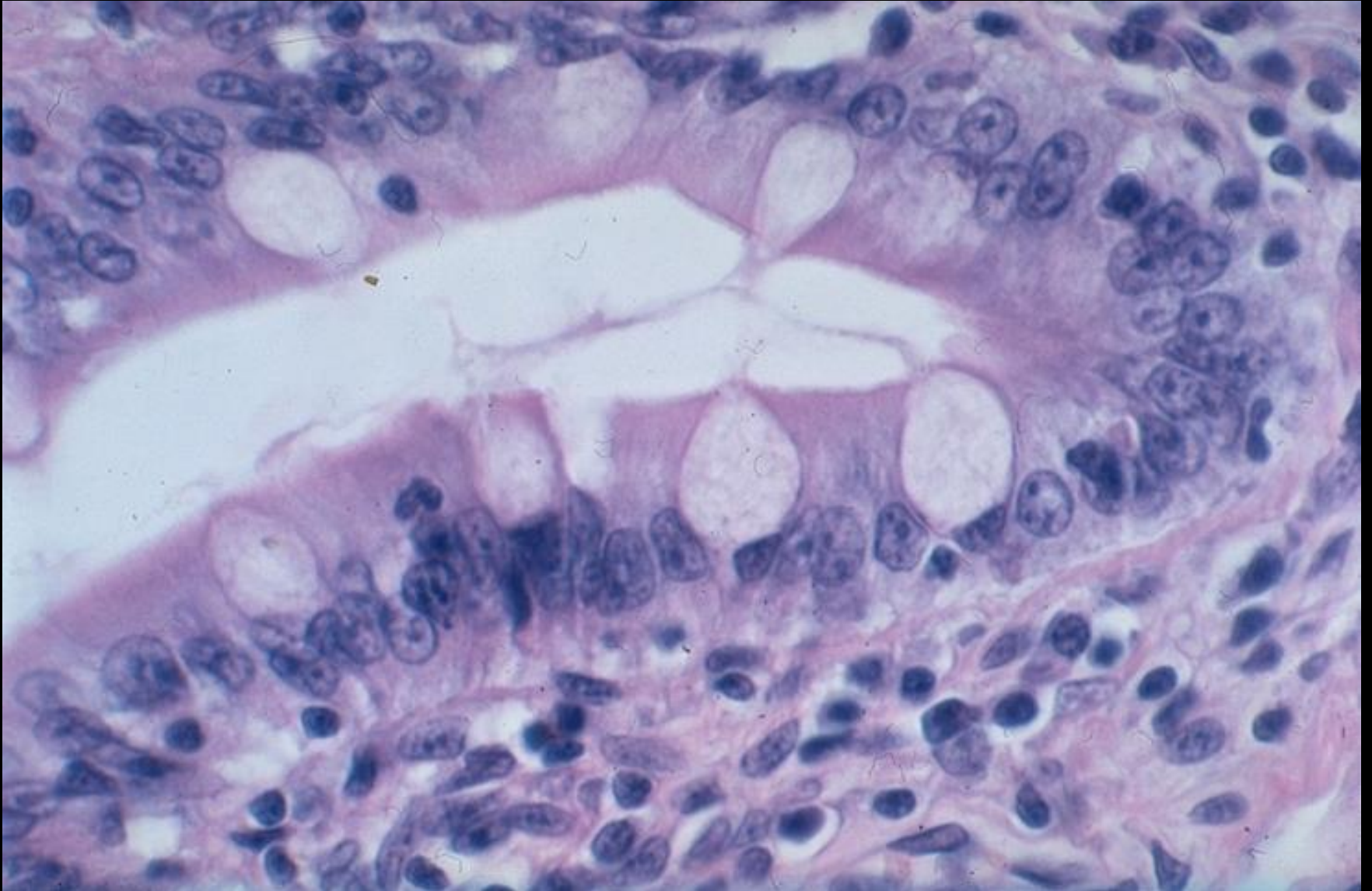
János Barna

# Unicellular glands












# Goblet cells



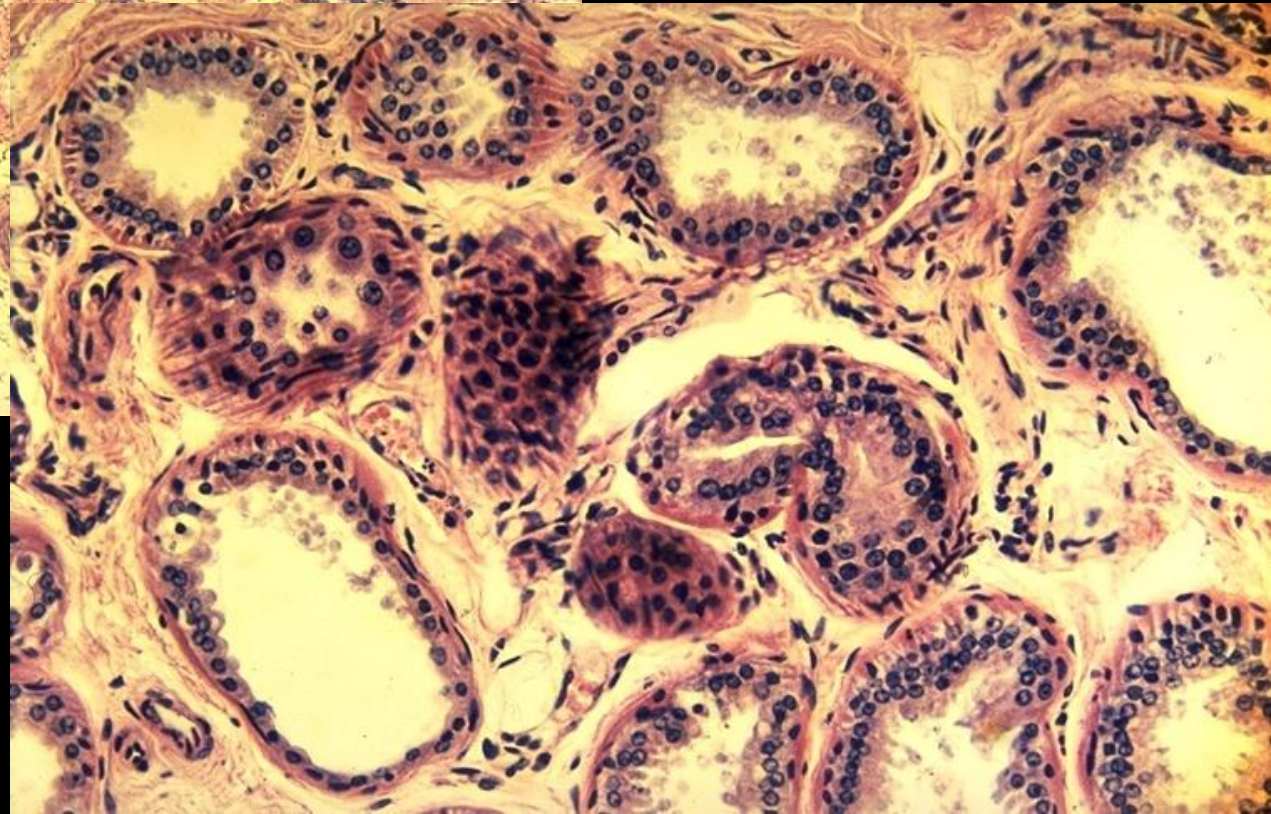
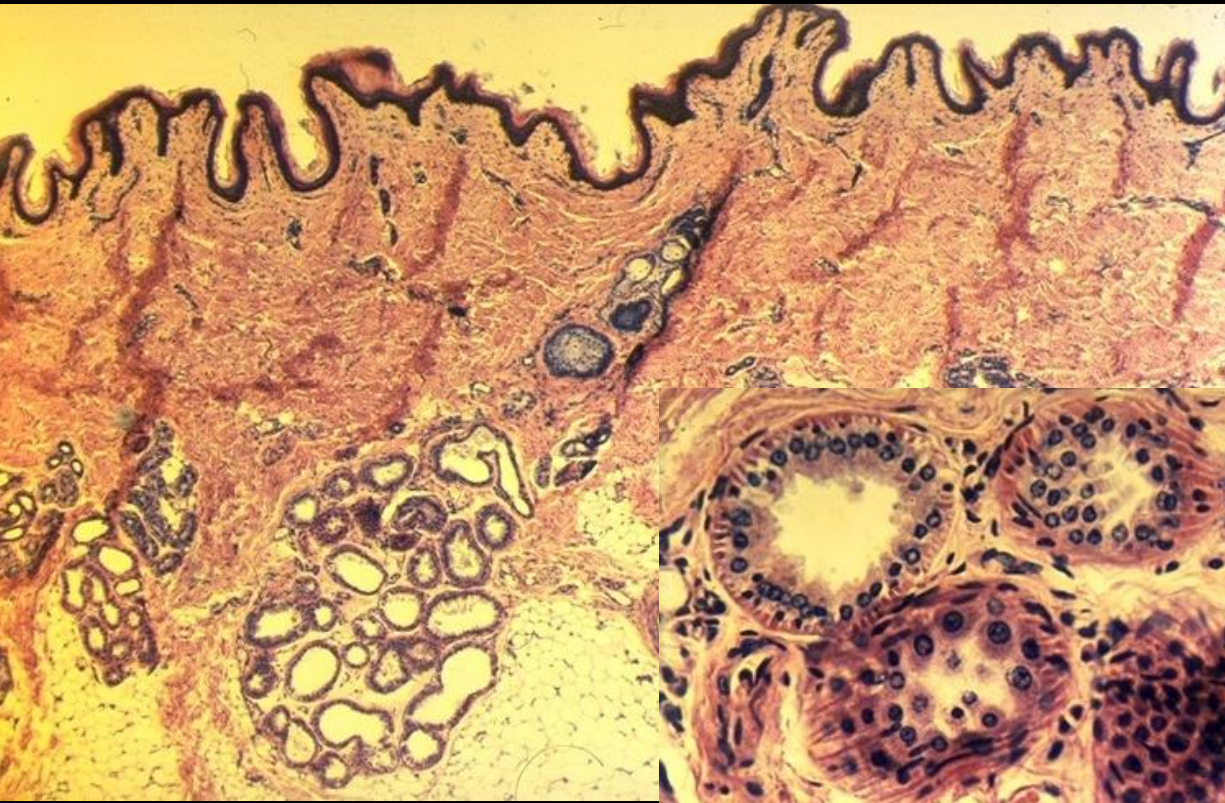
# Multicellular glands

	Tubular secretory structure	Alveolar secretory structure
Simple duct structure (duct does not branch)	  <p>(a) <b>Simple tubular</b> Example: intestinal glands</p> <p>(b) <b>Simple branched tubular</b> Example: stomach (gastric) glands</p>	  <p>(c) <b>Simple alveolar</b> Example: No important example in humans</p> <p>(d) <b>Simple branched alveolar</b> Example: sebaceous (oil) glands</p>
Compound duct structure (duct branches)	 <p>(e) <b>Compound tubular</b> Example: duodenal glands of small intestine</p>	  <p>(f) <b>Compound alveolar</b> Example: mammary glands</p> <p>(g) <b>Compound tubuloalveolar</b> Example: salivary glands</p>

Key:  = Surface epithelium     = Duct     = Secretory epithelium

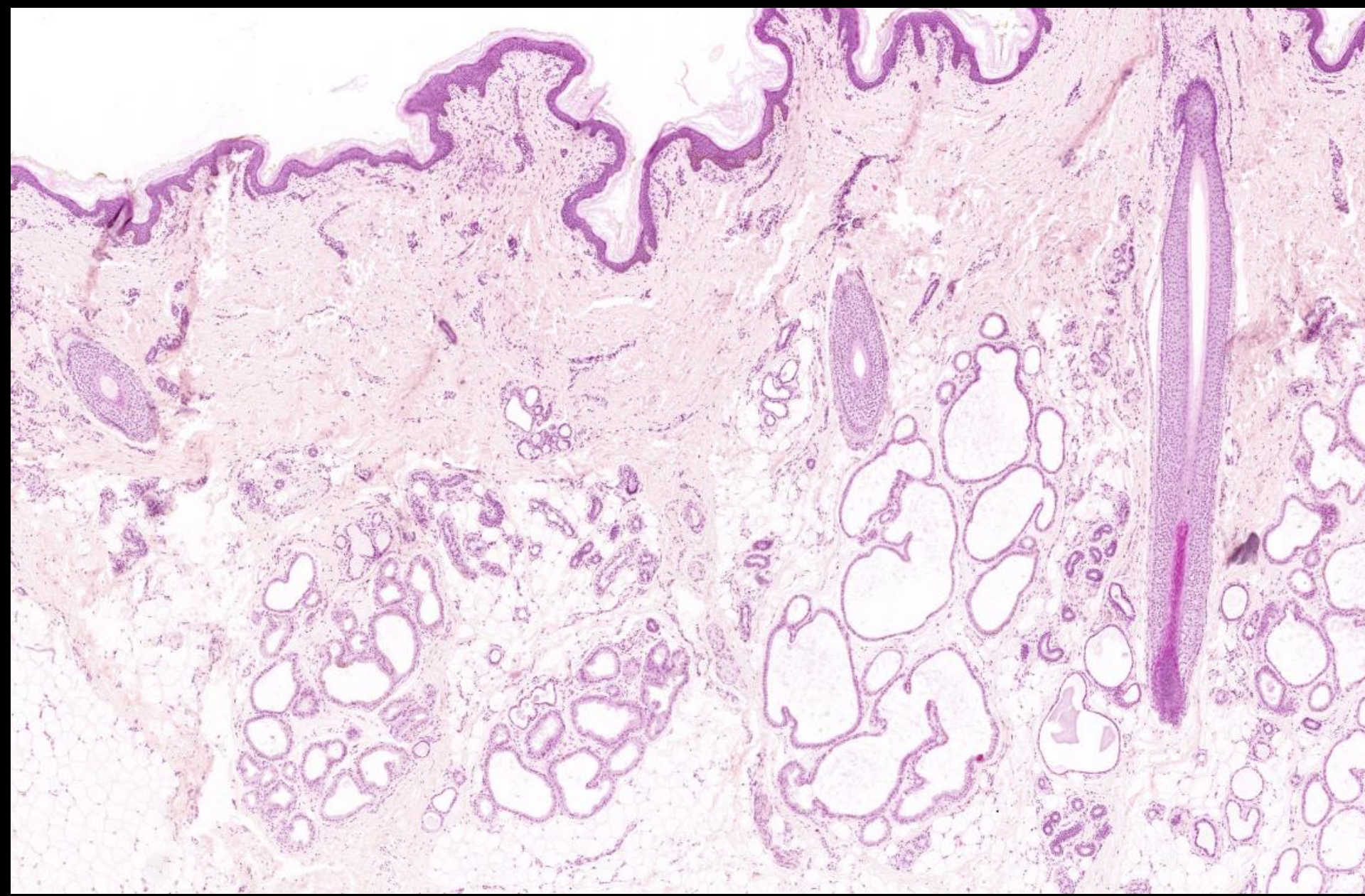


# Odoriferous gland (apocrine gland)



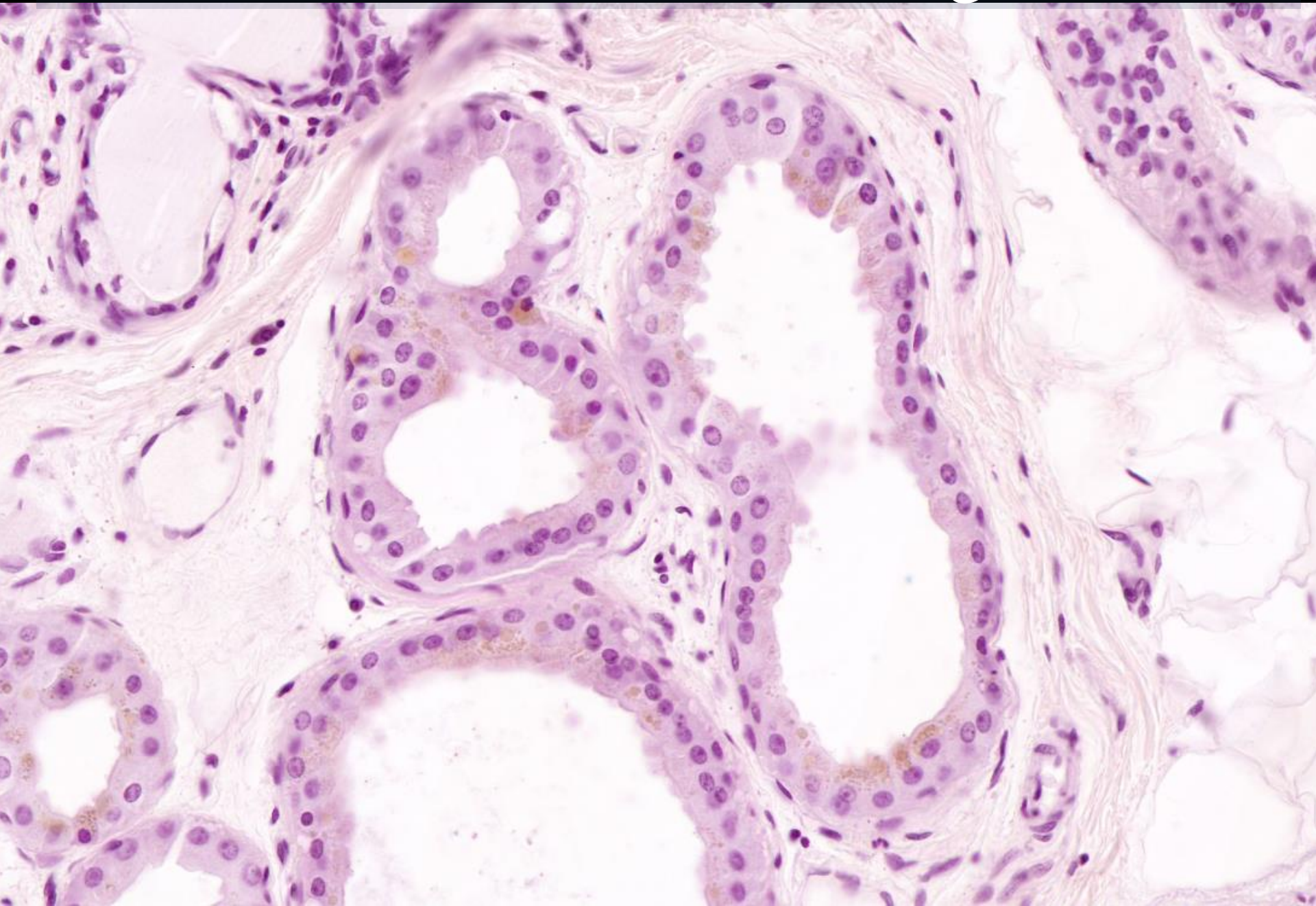


# Odoriferous gland (apocrine gland)

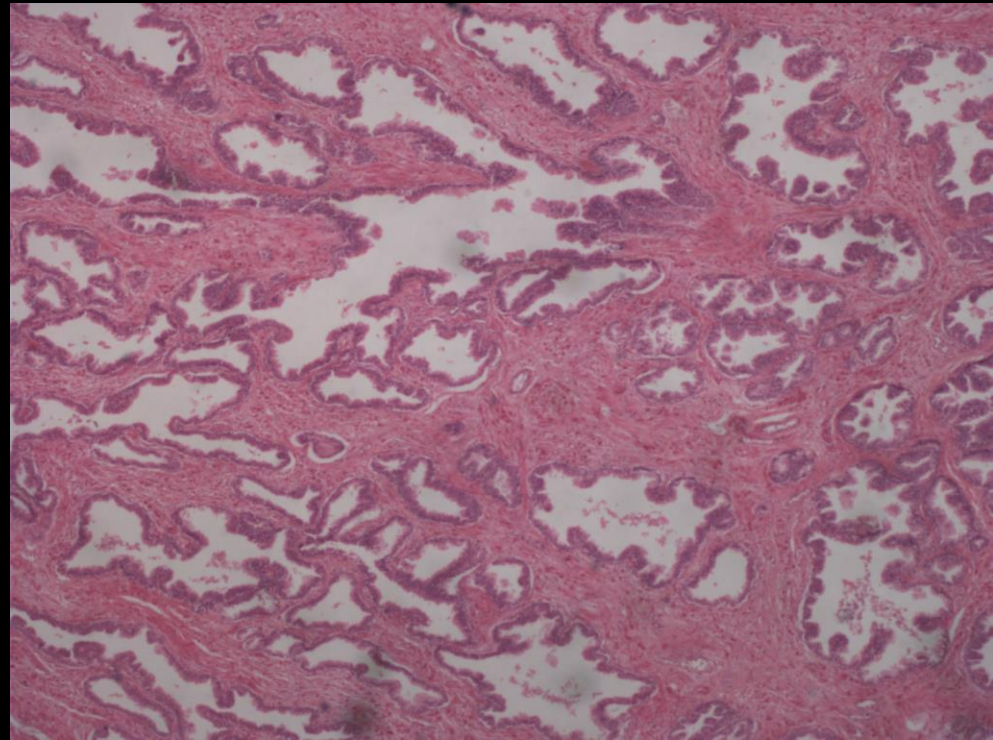




# Alveoli of odoriferous gland

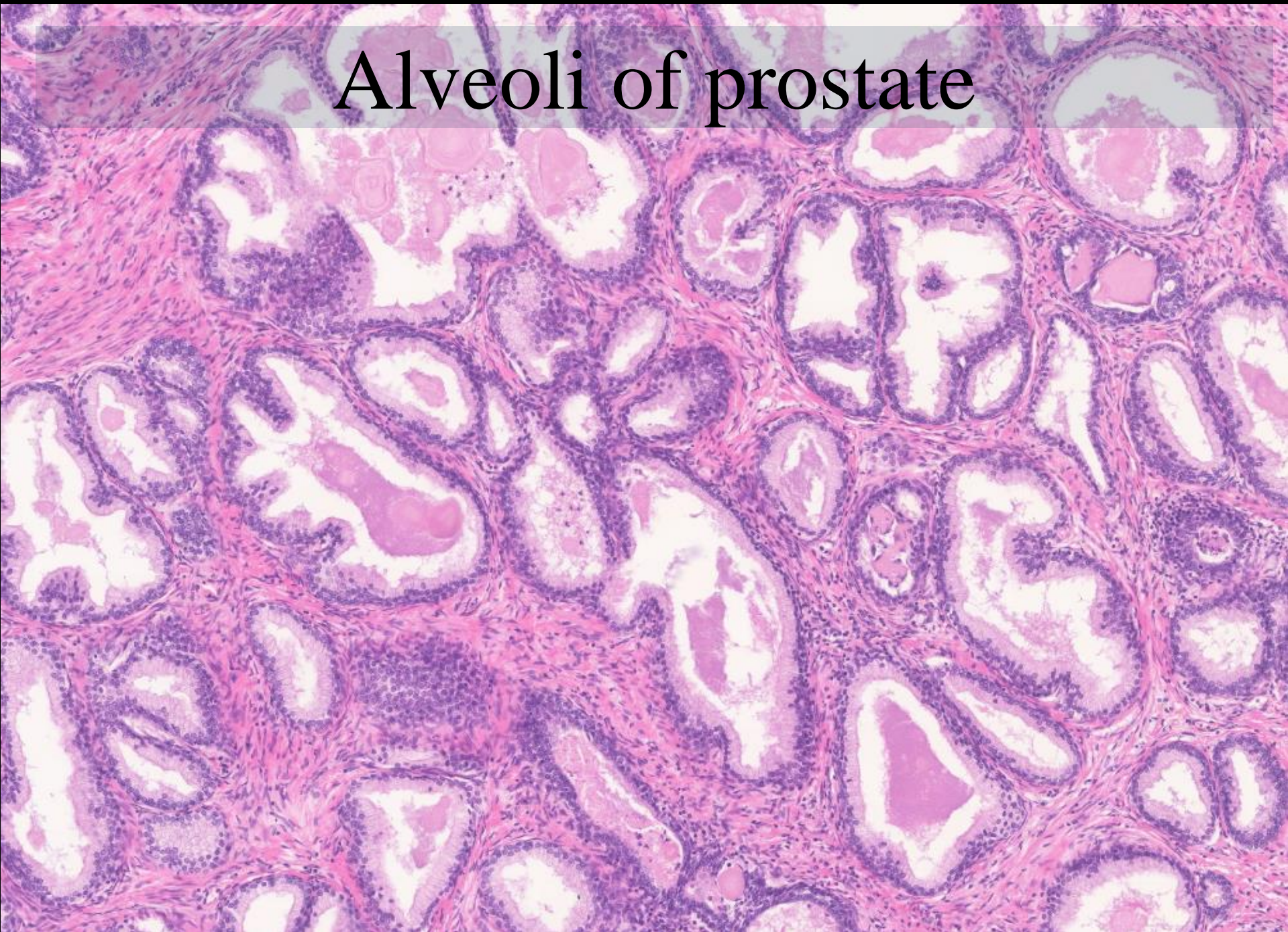


# Prostate (pseudoapocrine gland)





# Alveoli of prostate



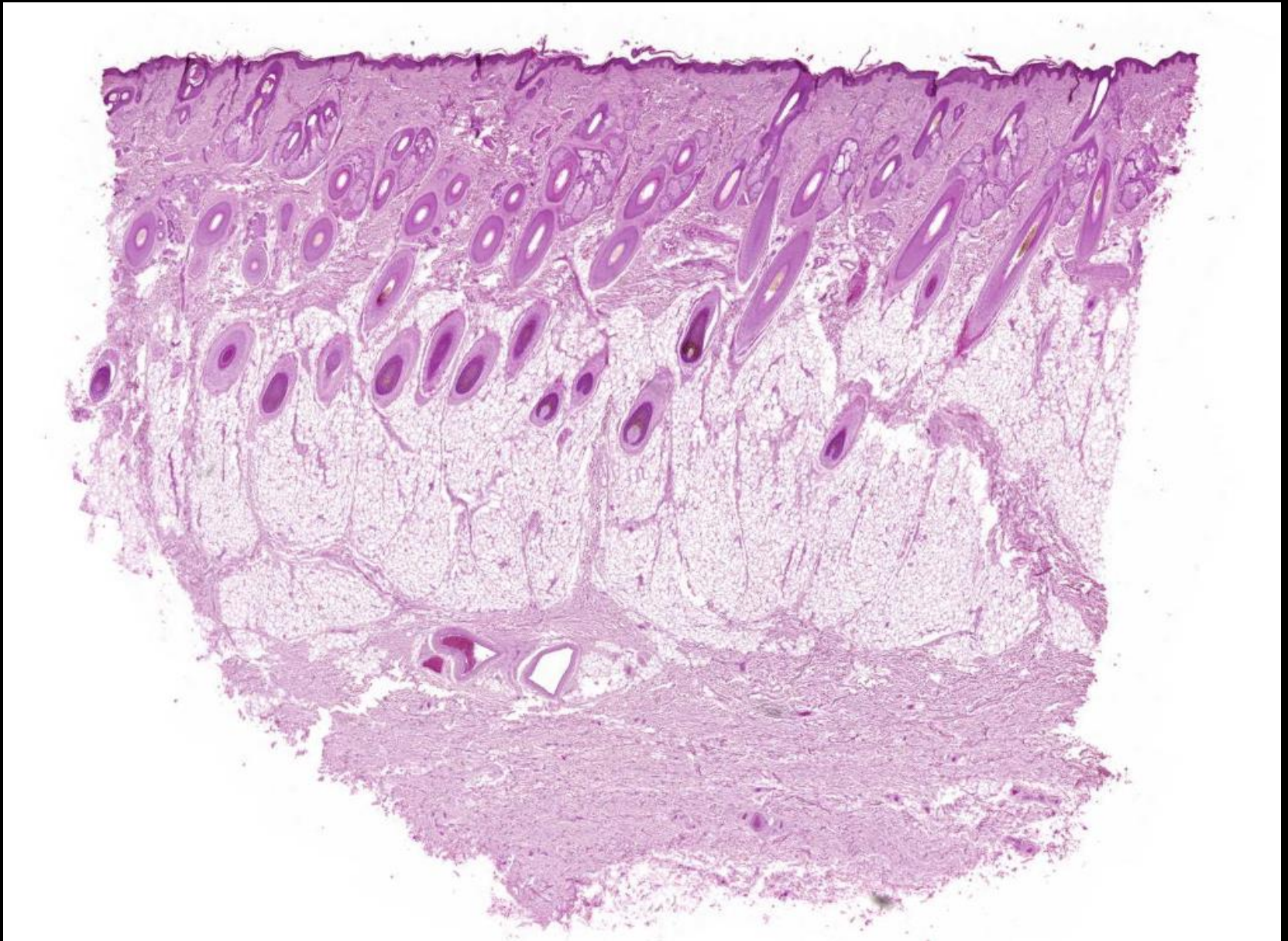


# Alveoli of prostate

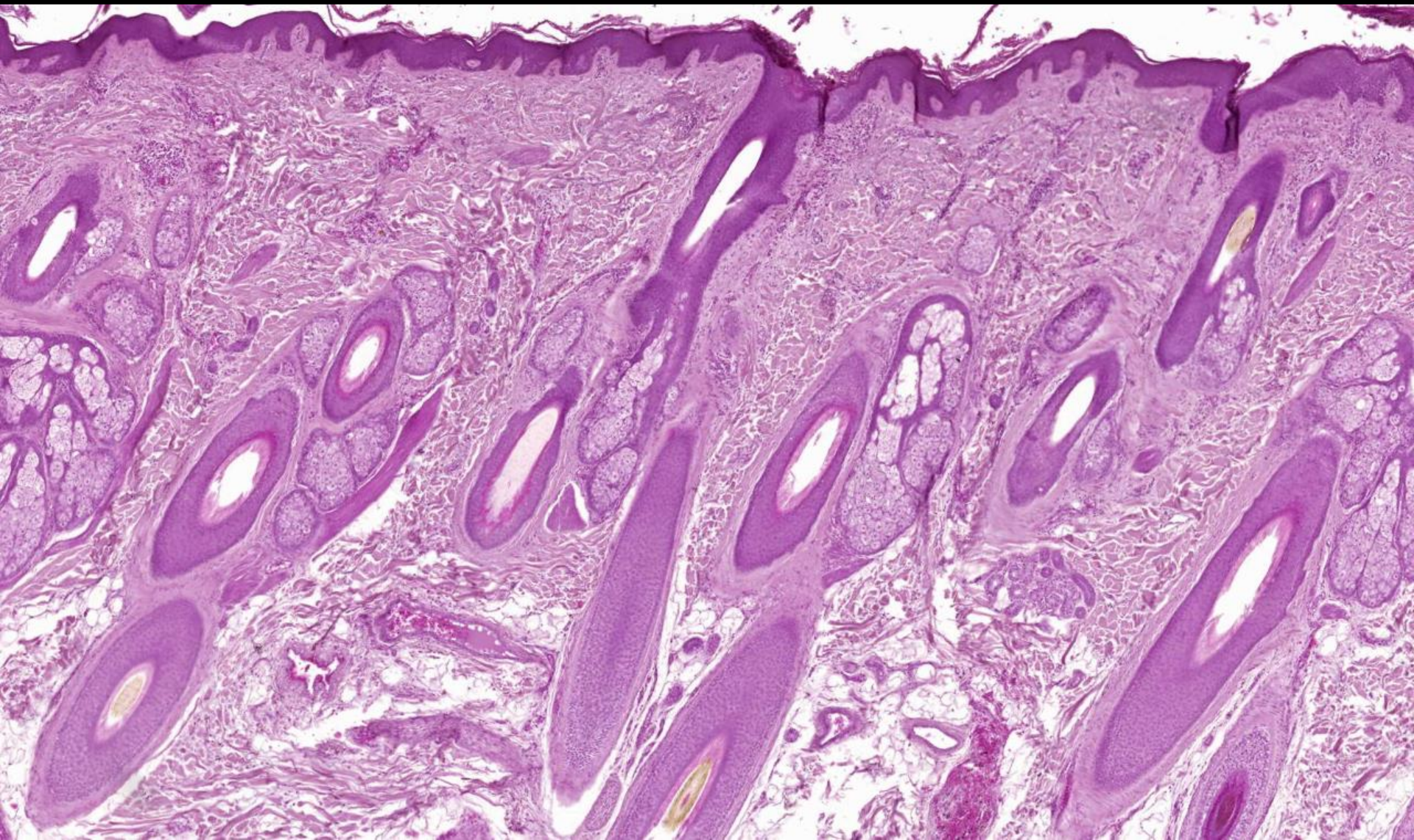




# Hairy skin

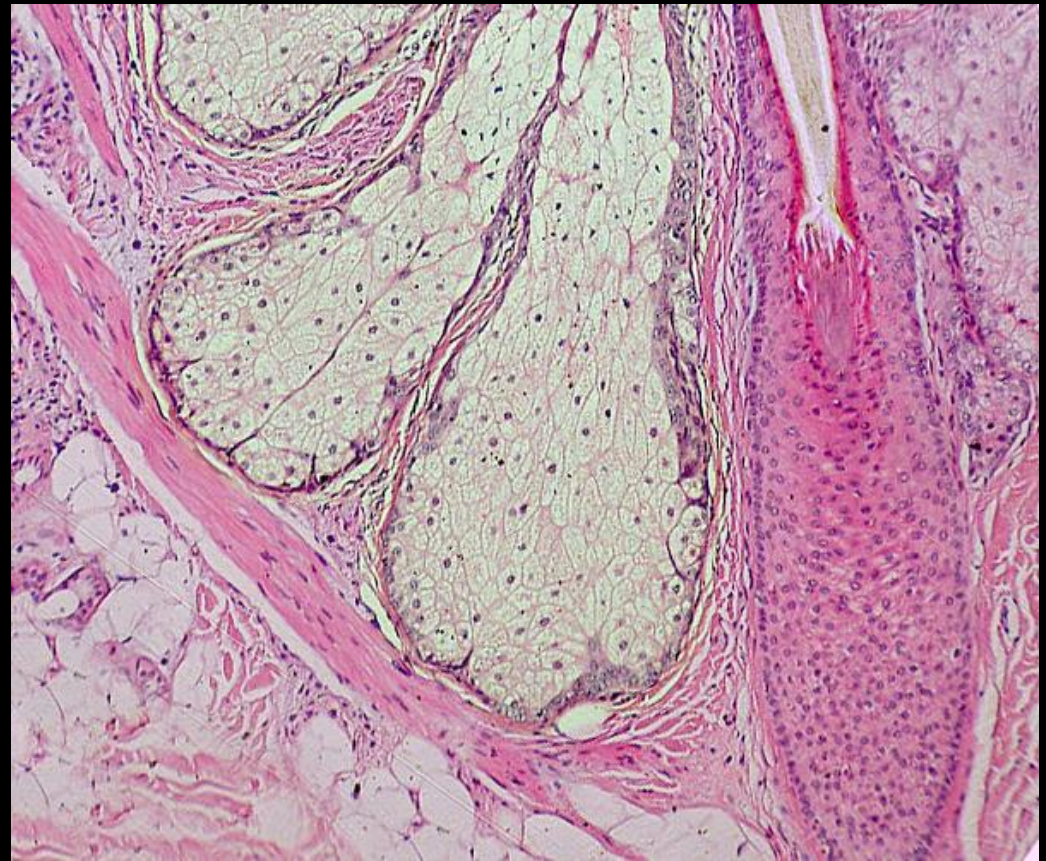




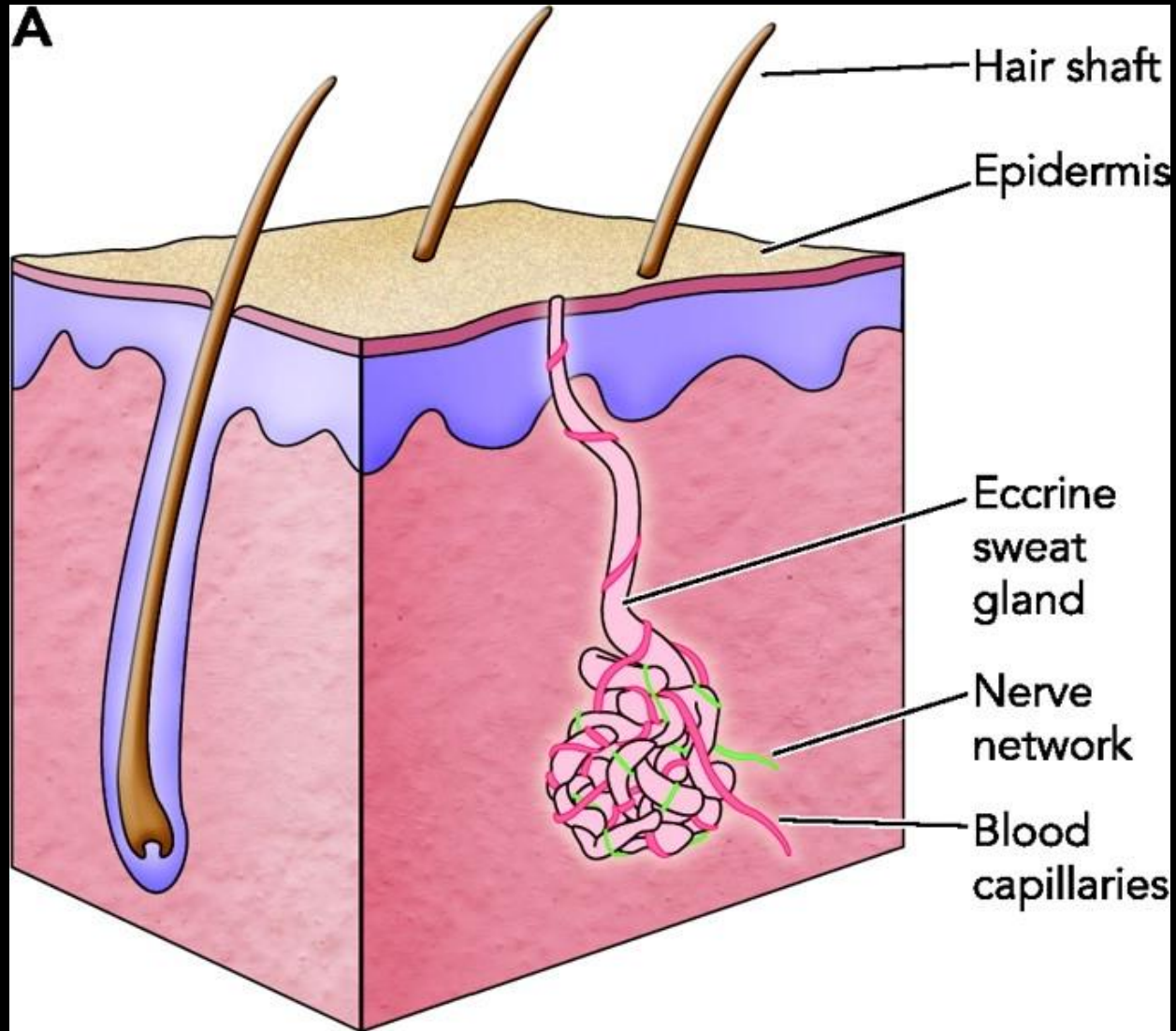




# Holocrine gland (sebaceous gland)



# Merocrine gland





# Hairy skin with sweat glands





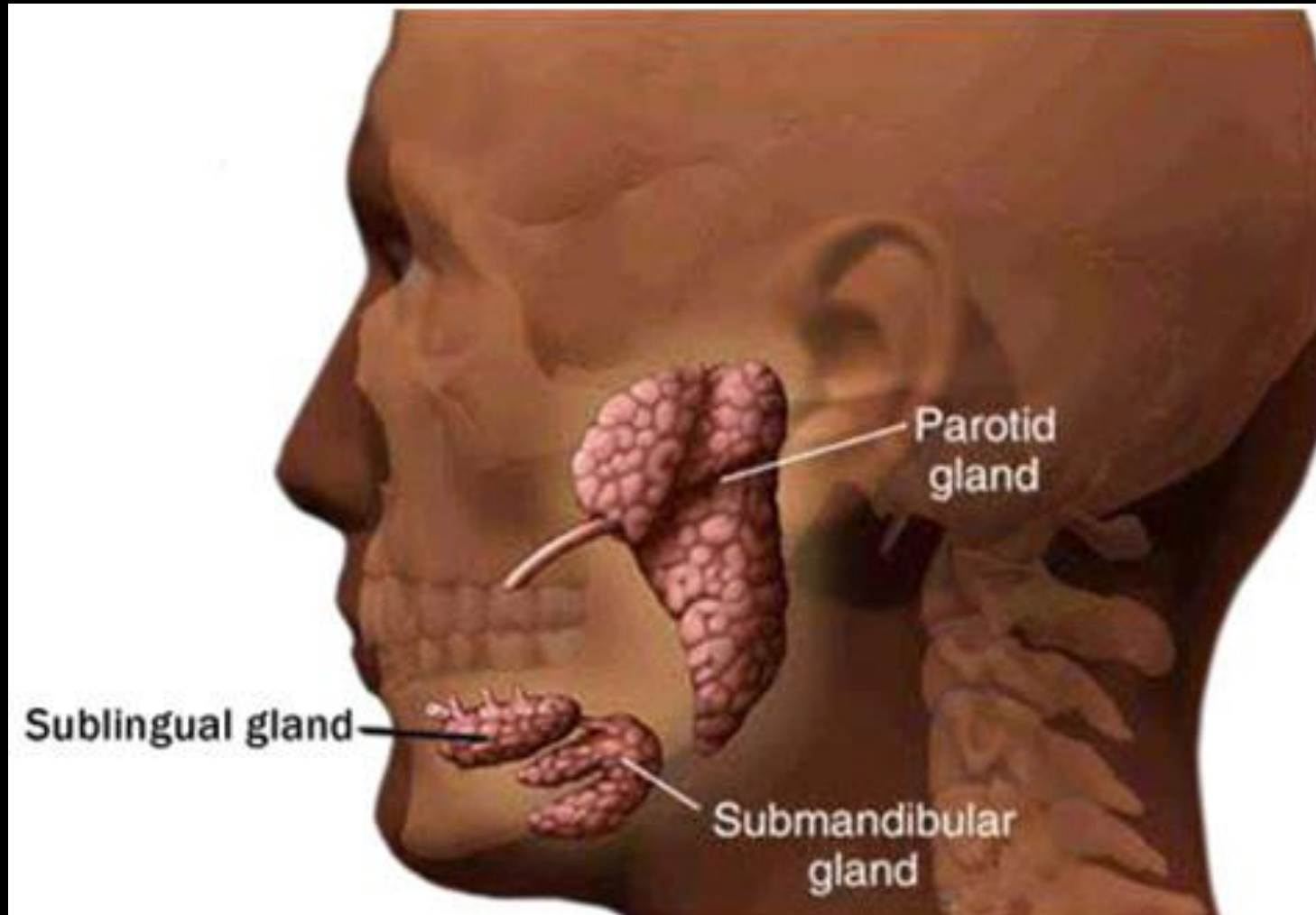
# Sweat gland

Skin, thick H&E





# Merocrine glands (salivary glands)





# Submandibular gland

