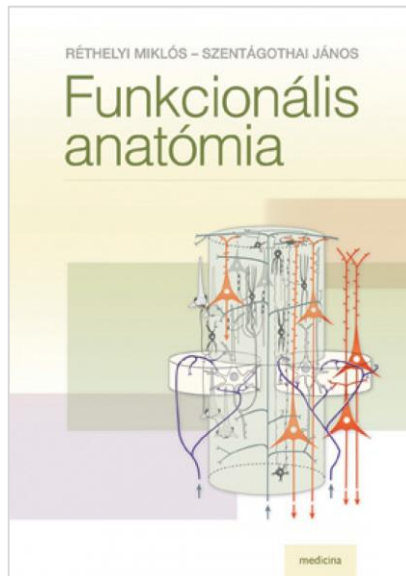
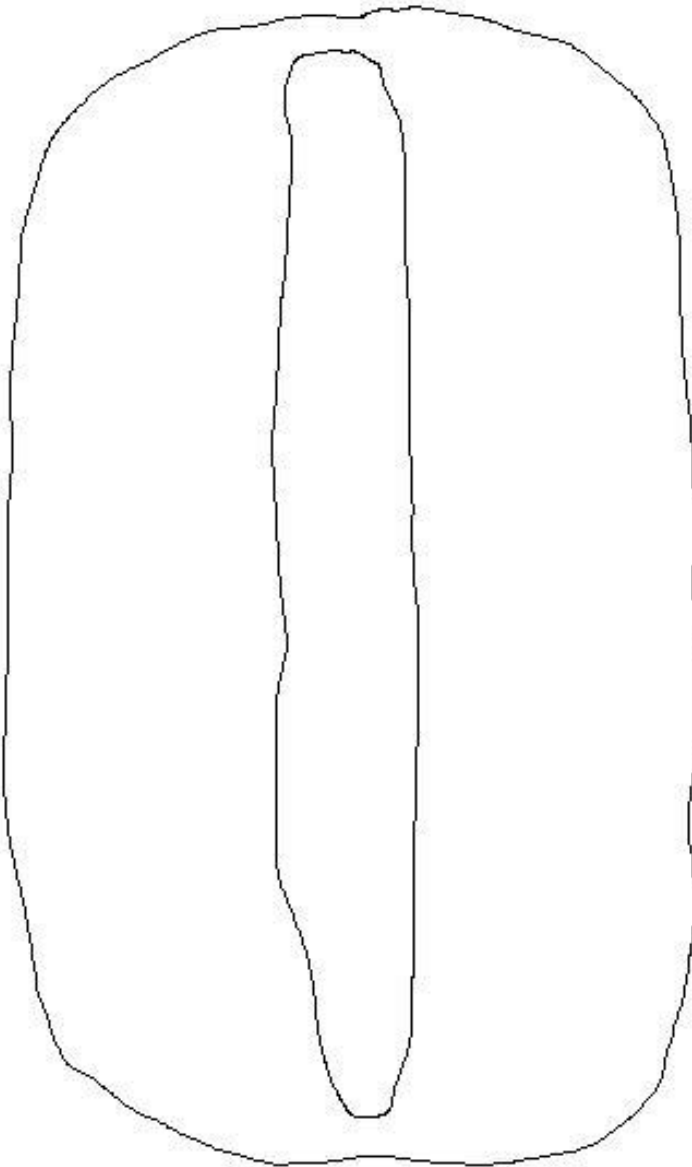


Az agyhólyagok differenciálódása, az előagy fejlődése. A diencephalon makroszkópiája, III. kamra.

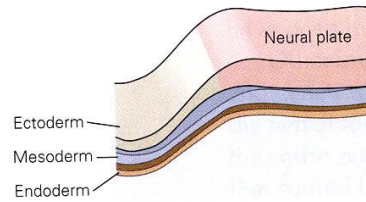
dr. Hanics János



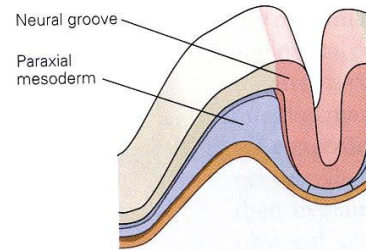
Neurulatio



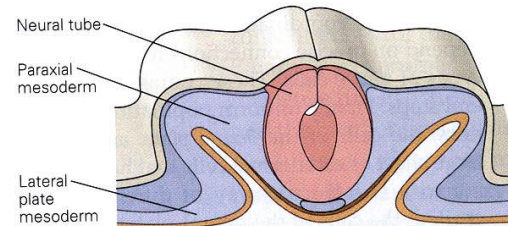
A



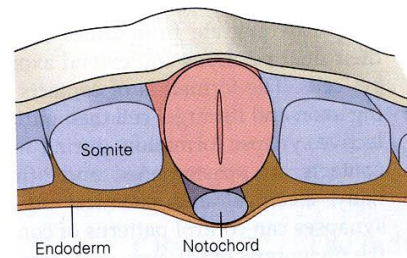
B



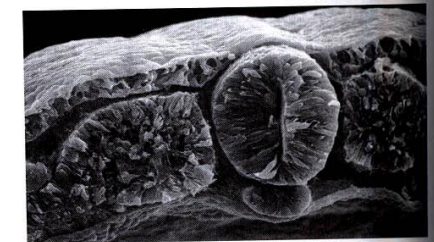
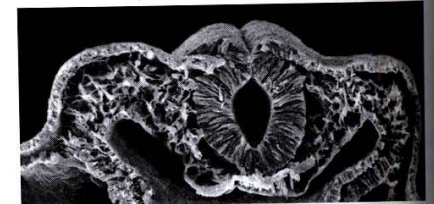
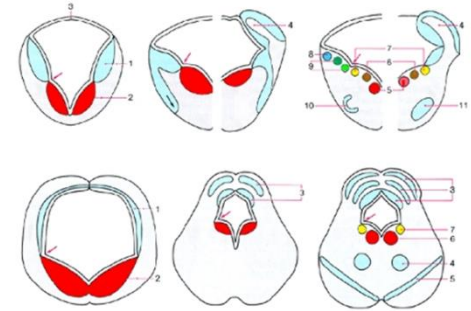
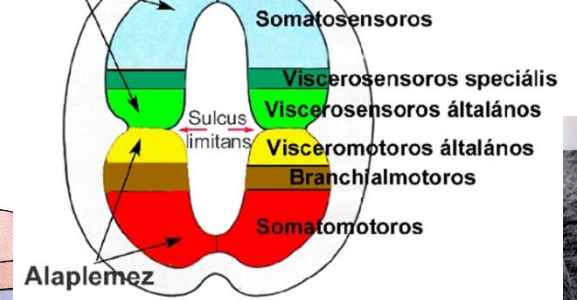
C



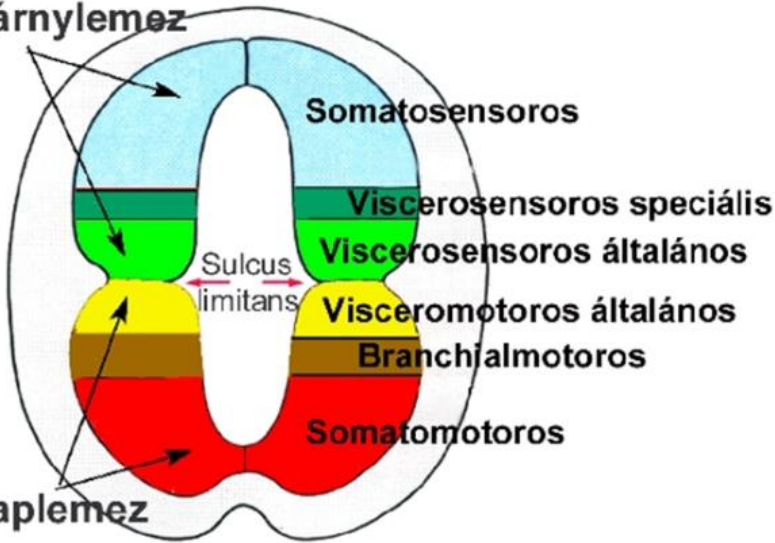
D



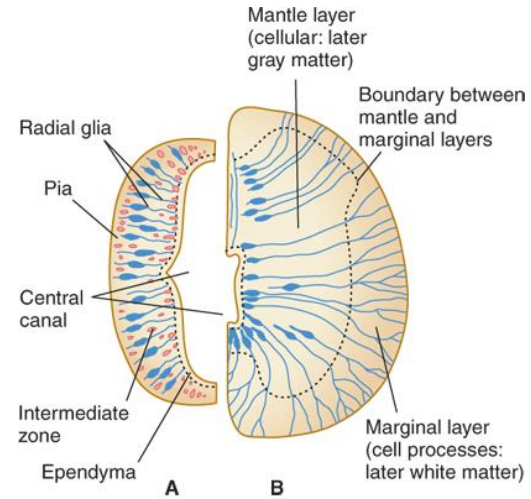
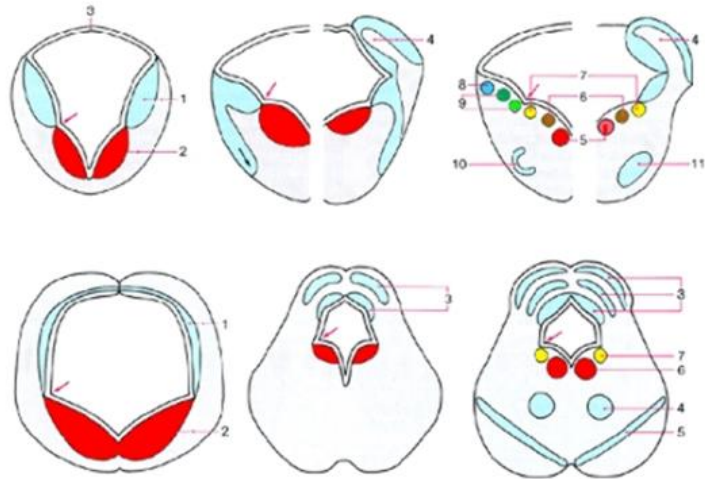
Szárnylemez



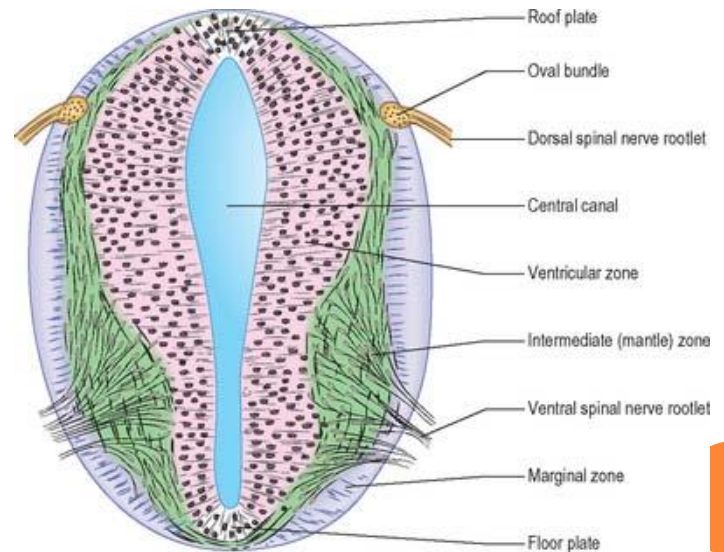
Szárnyylemez



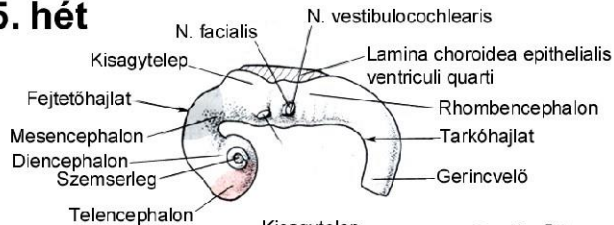
Alaplemez



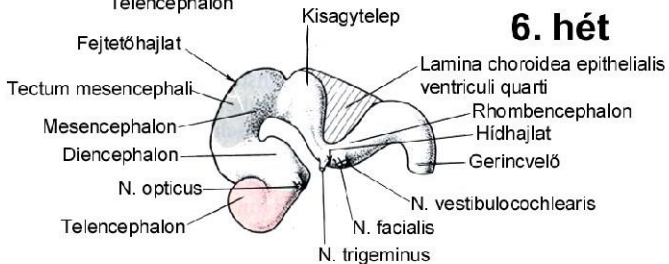
Source: Stephen G. Waxman
 Clinical Neuroanatomy, Twenty-Eighth Edition
 www.accessmedicine.com
 Copyright © McGraw-Hill Education. All rights reserved.



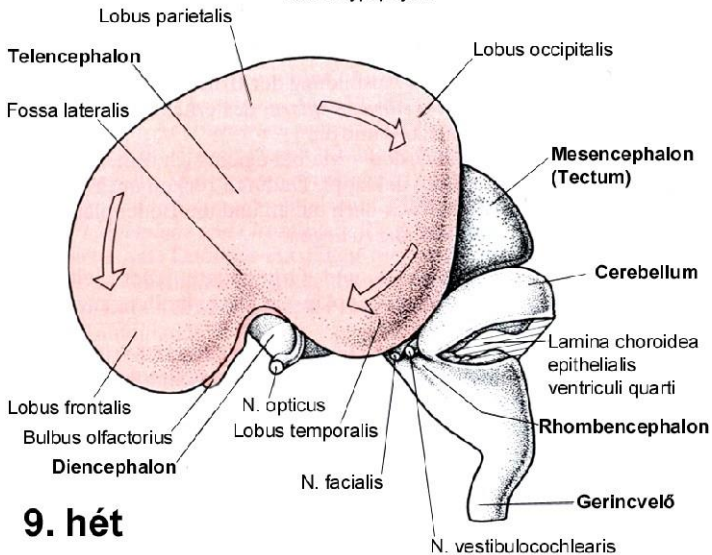
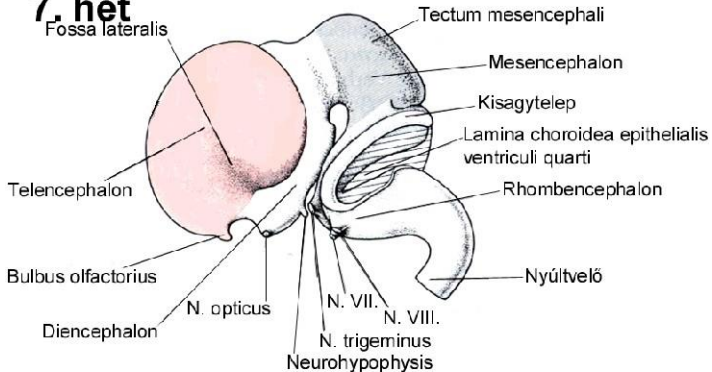
5. hét



6. hét

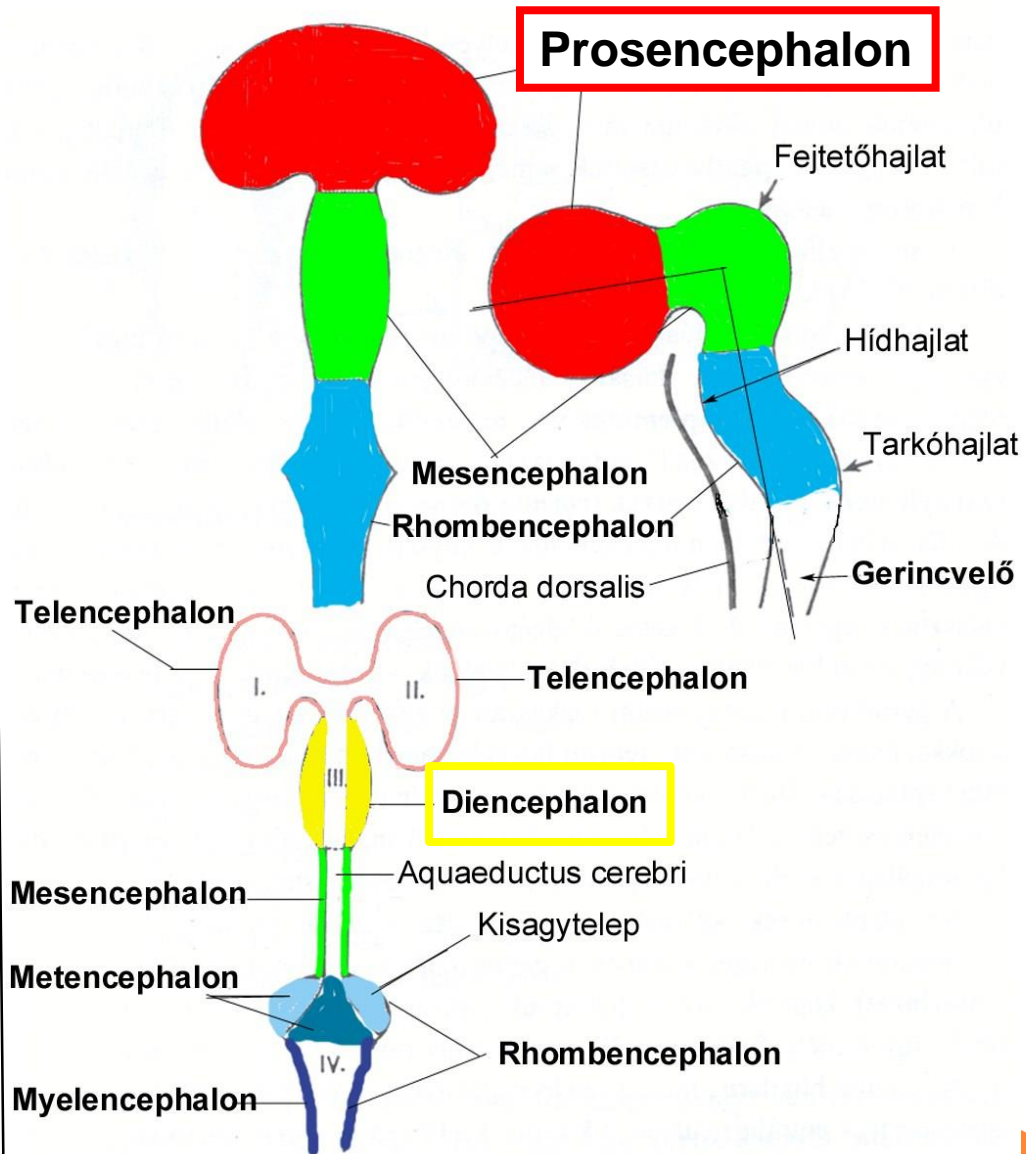


7. hét



9. hét

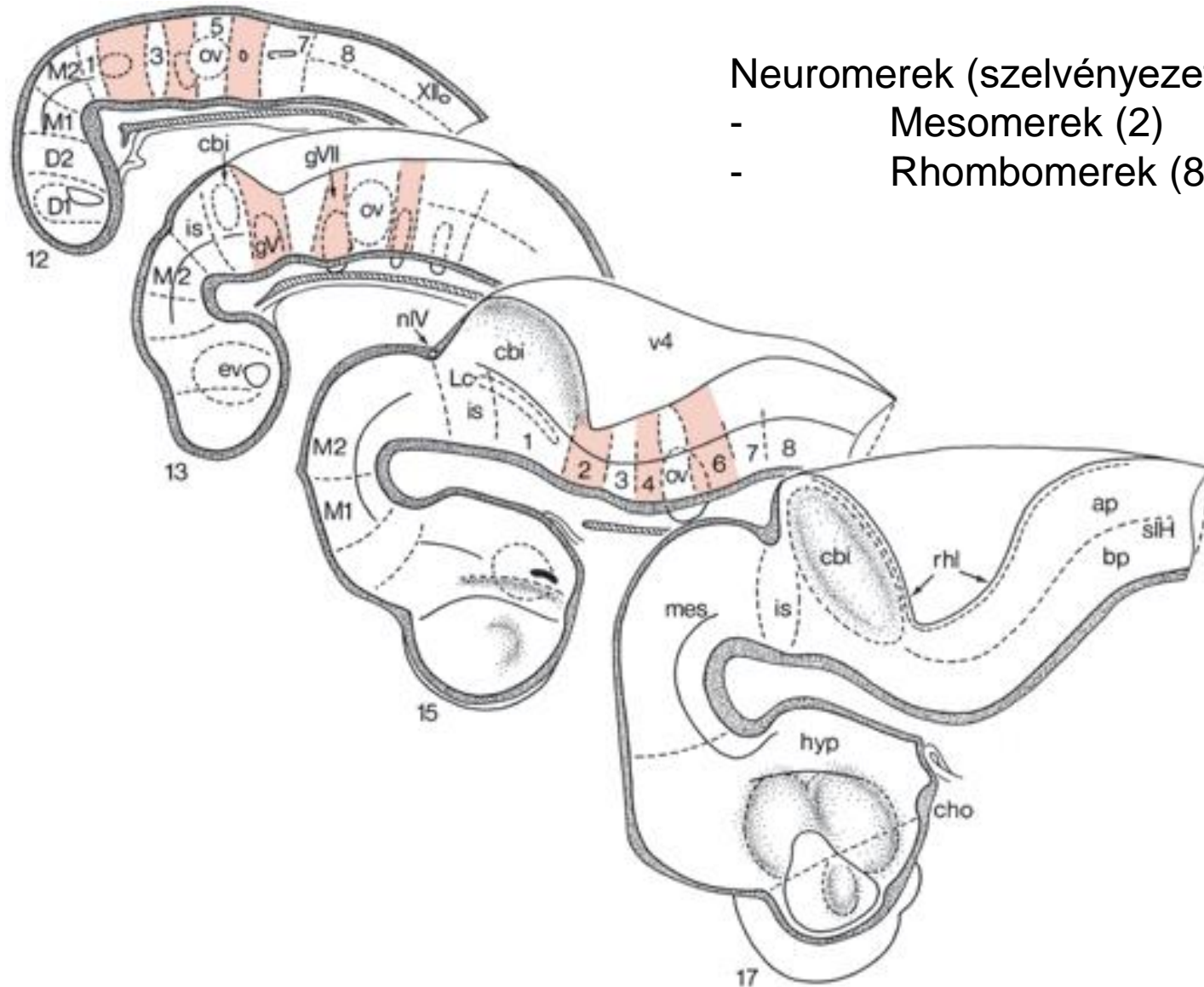
Elsődleges agyhólyagok

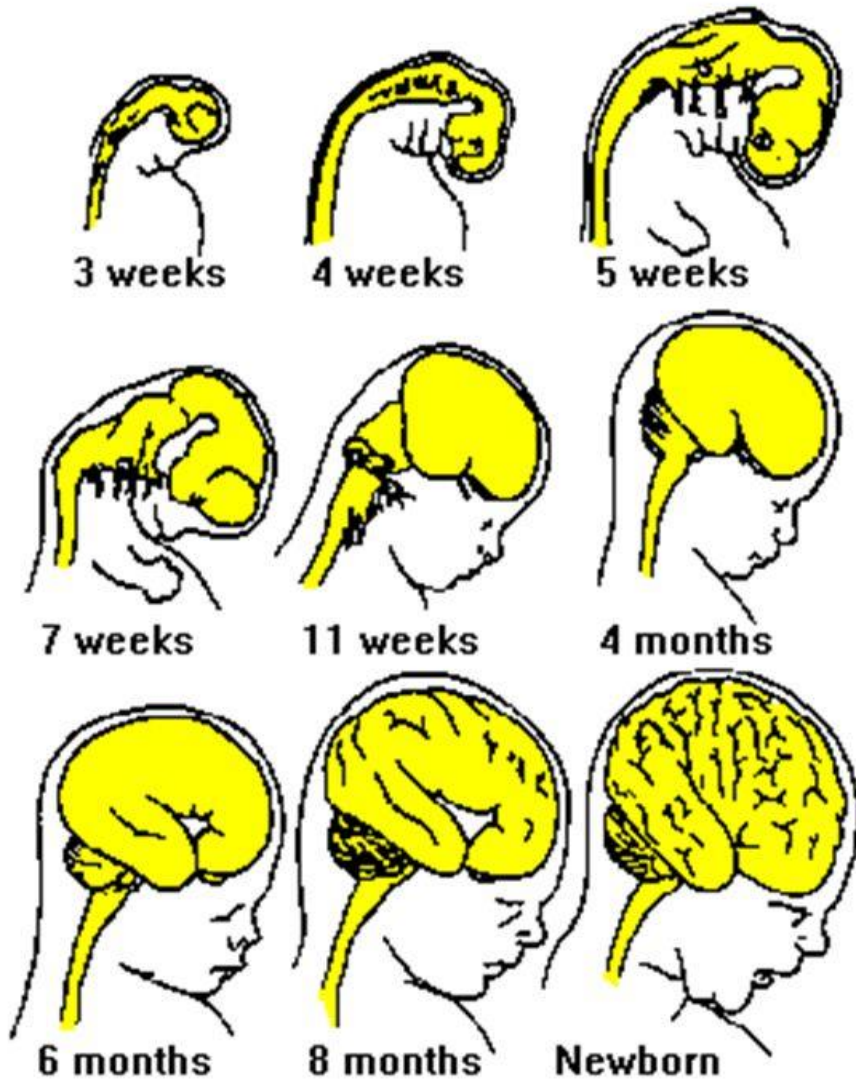


Másodlagos agyhólyagok



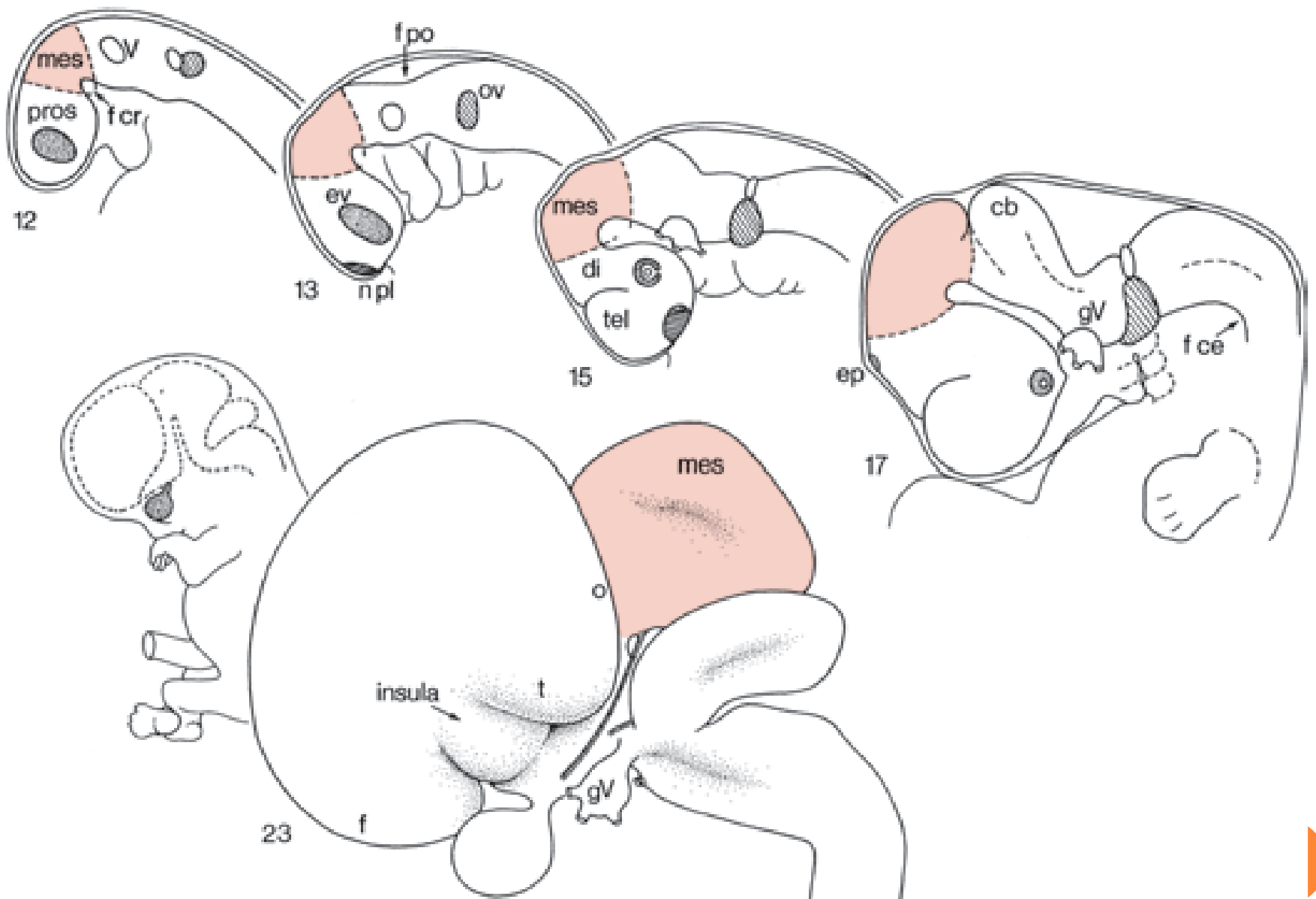
Az agy fejlődése (testszelvények)



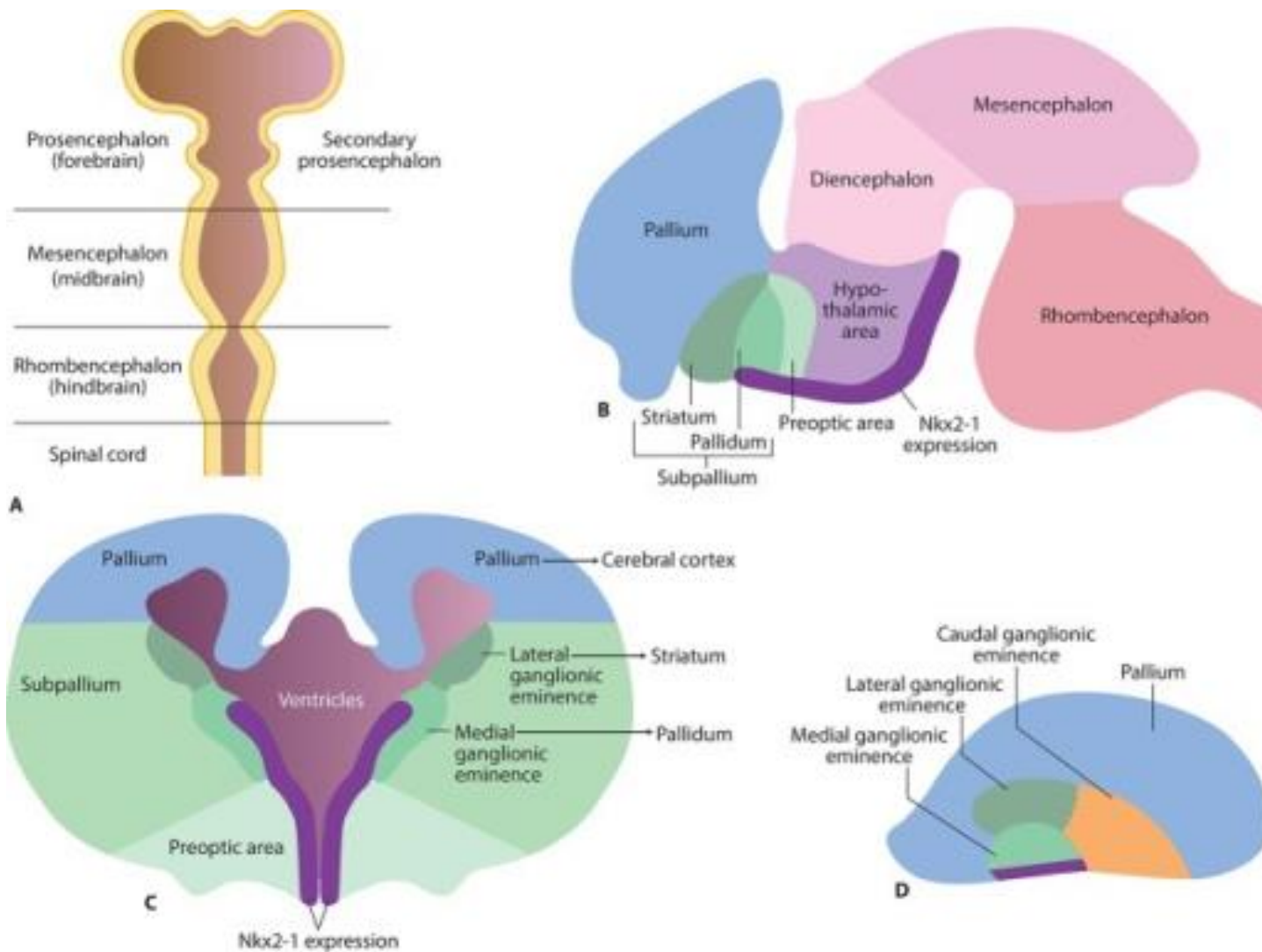


az agy
fejlődése

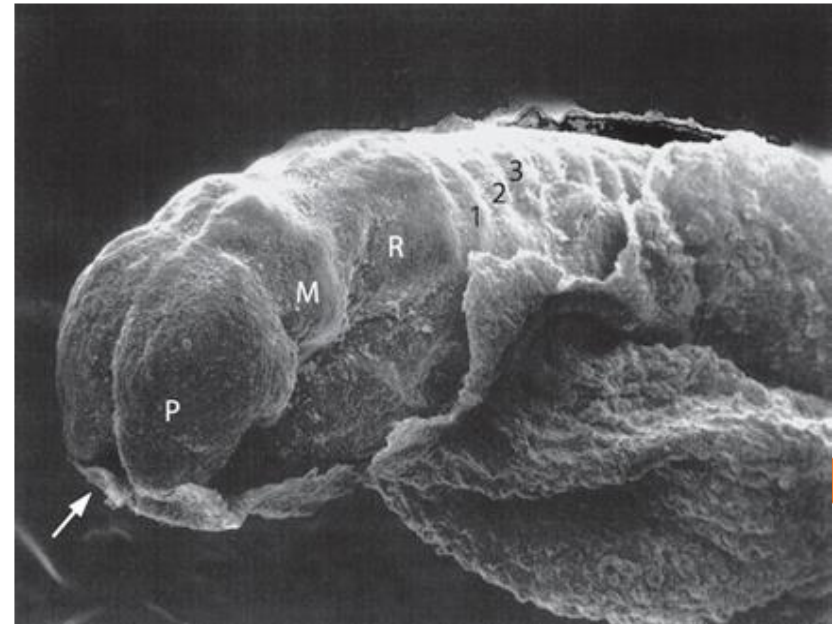
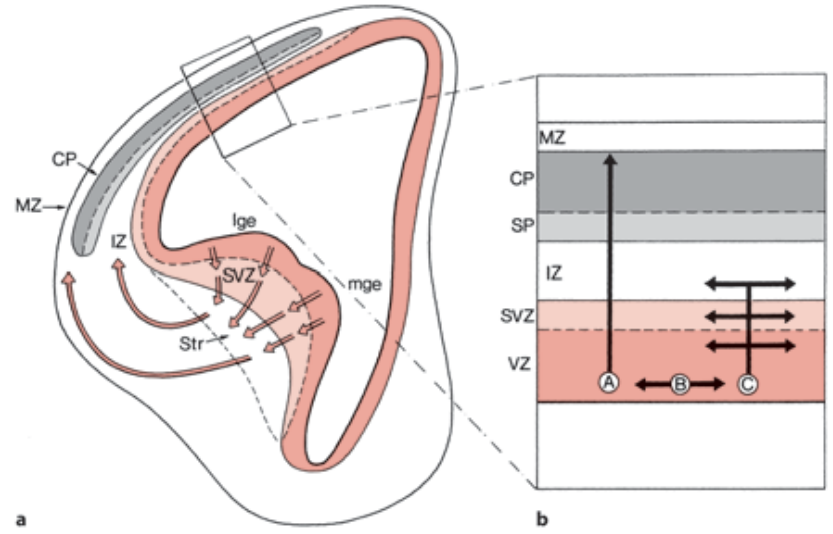
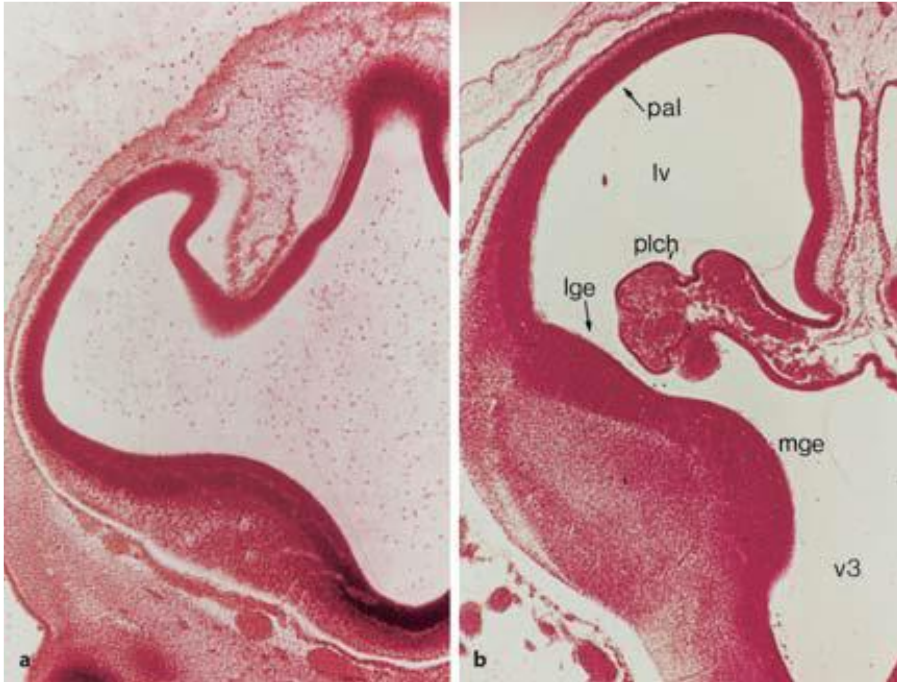


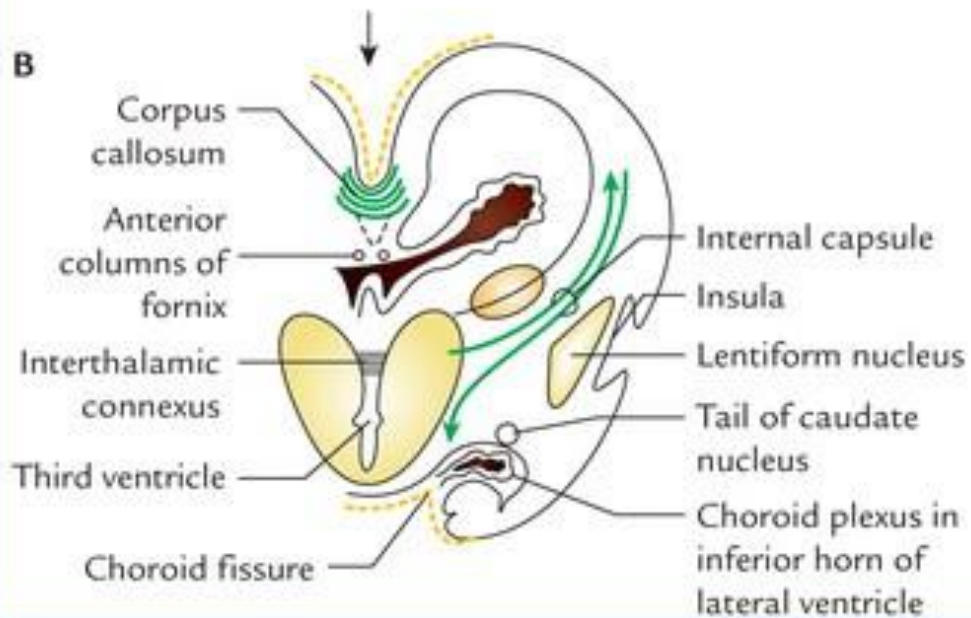
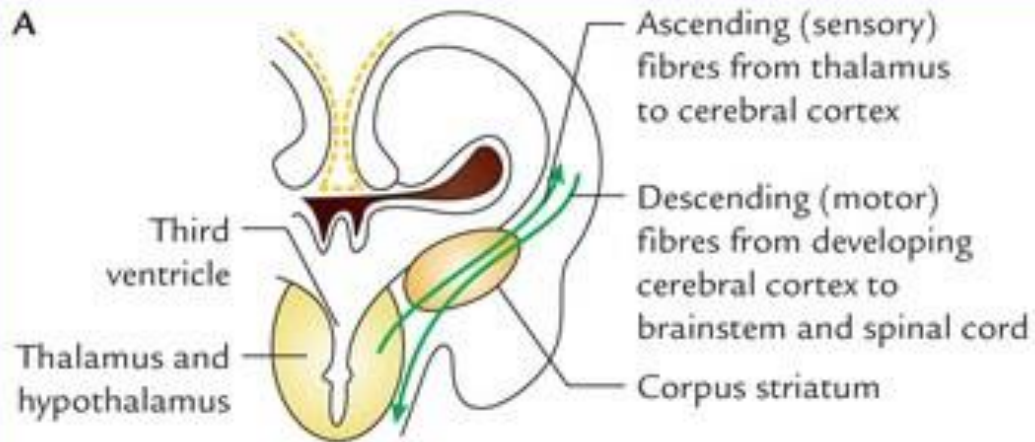


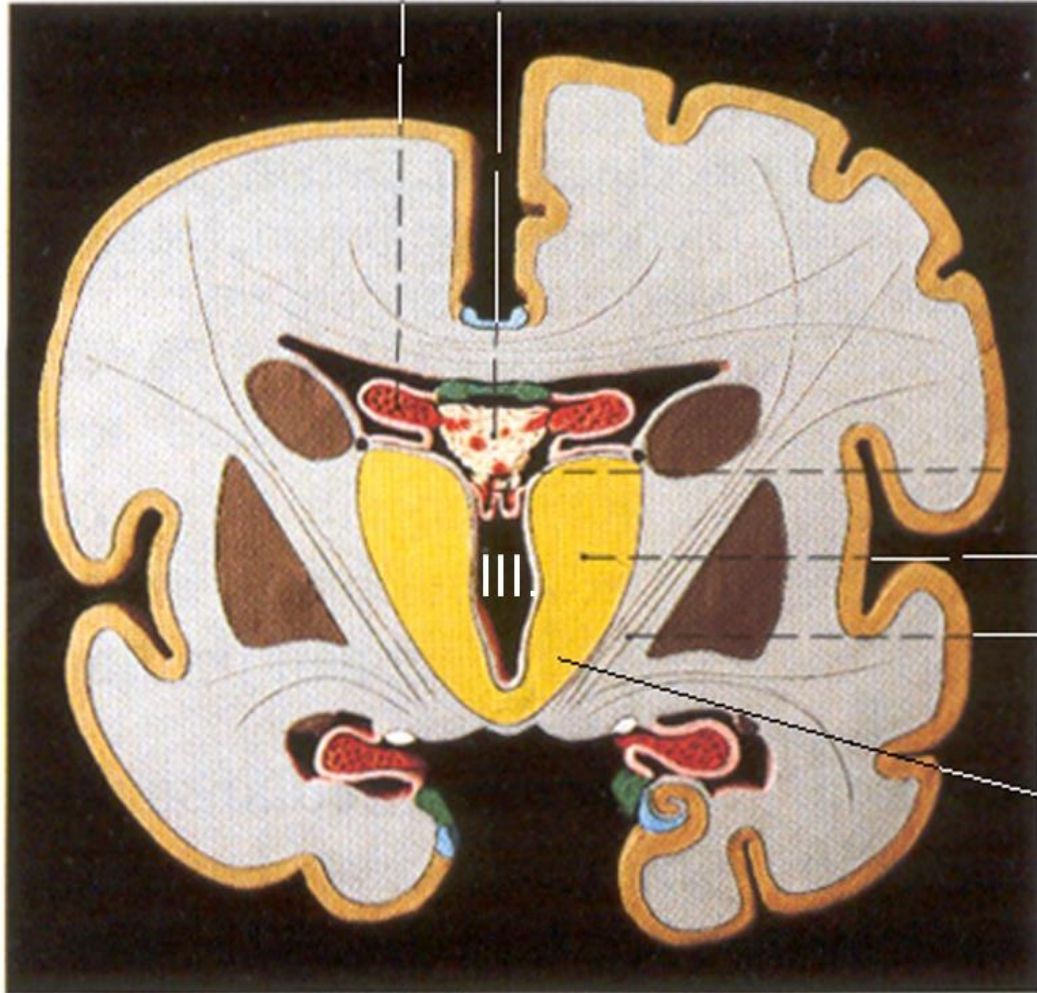
Az előagy fejlődése



Fogalmak: pallium, subpallium, medialis és lateralis (ganglionic eminence=) ganglion domb







Plexus choroideus
ventriculi tertii

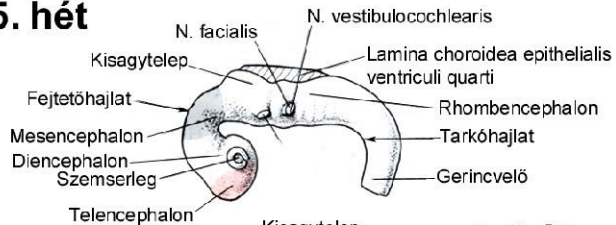
Thalamus

Capsula interna

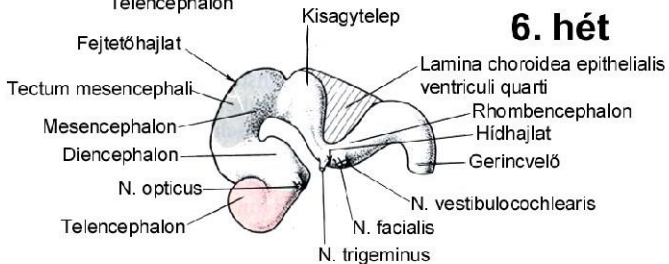
Hypothalamus



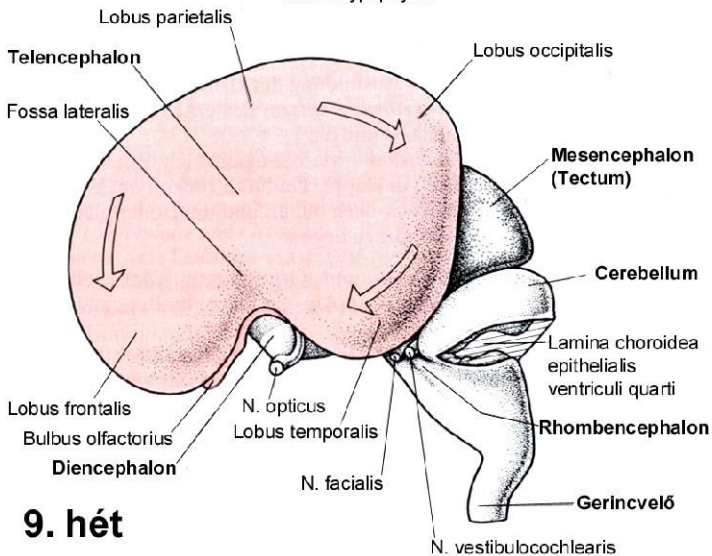
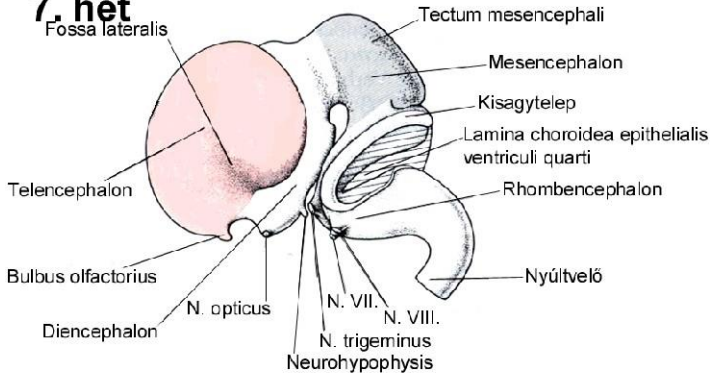
5. hét



6. hét

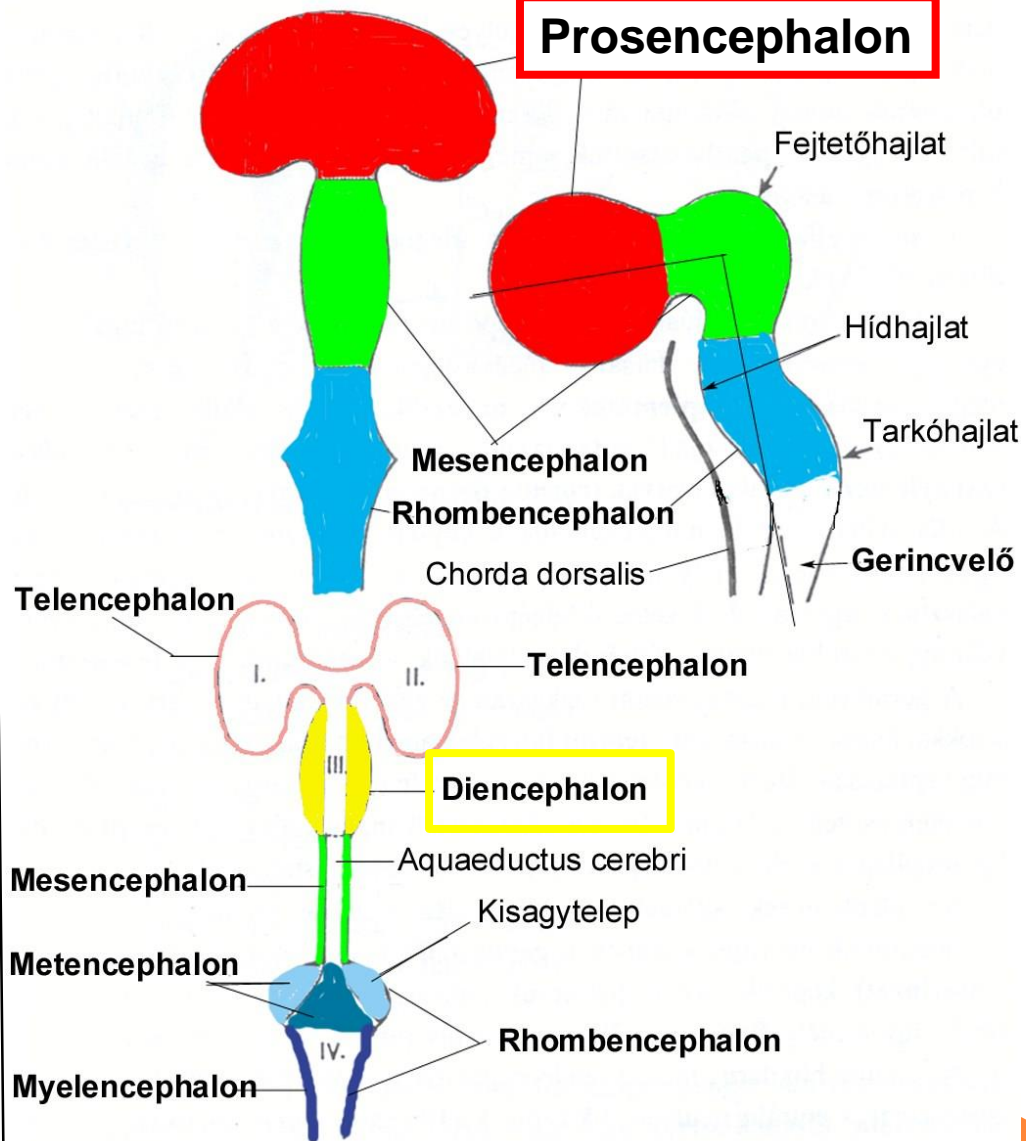


7. hét

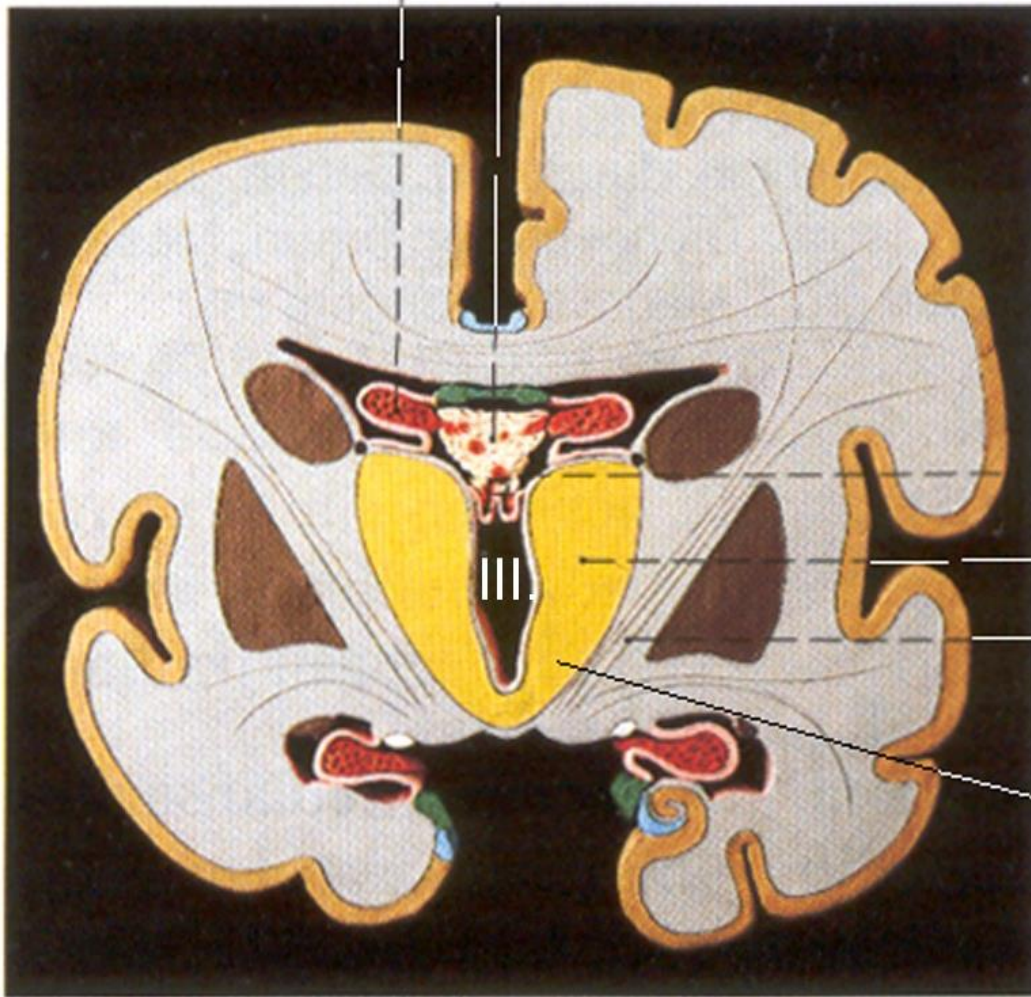


9. hét

Prosencephalon



A diencephalon tulajdonképpeni helyzete az agyban



Plexus choroideus
ventriculi tertii

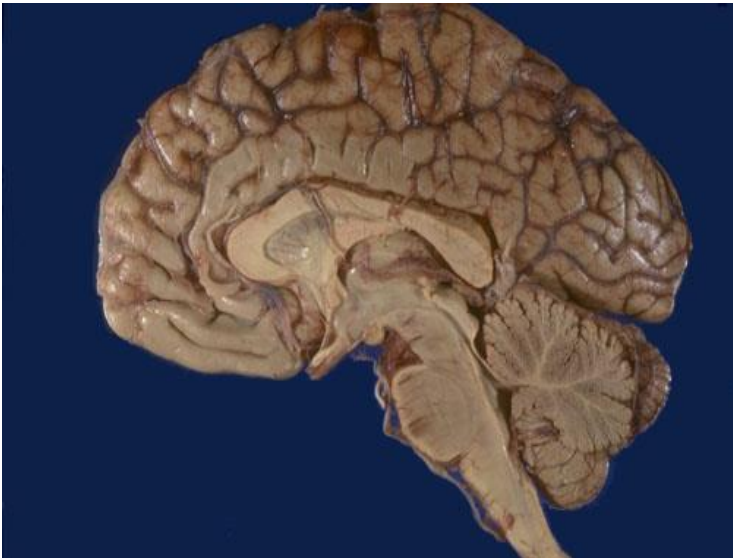
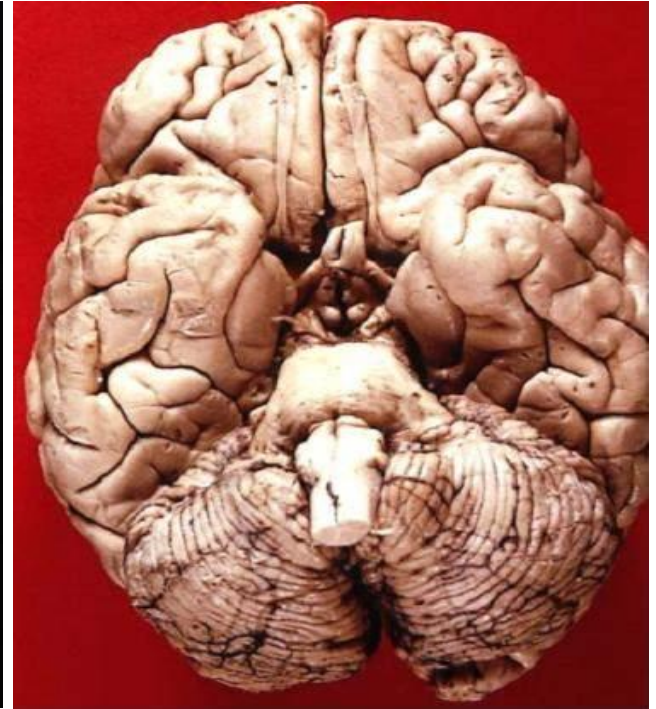
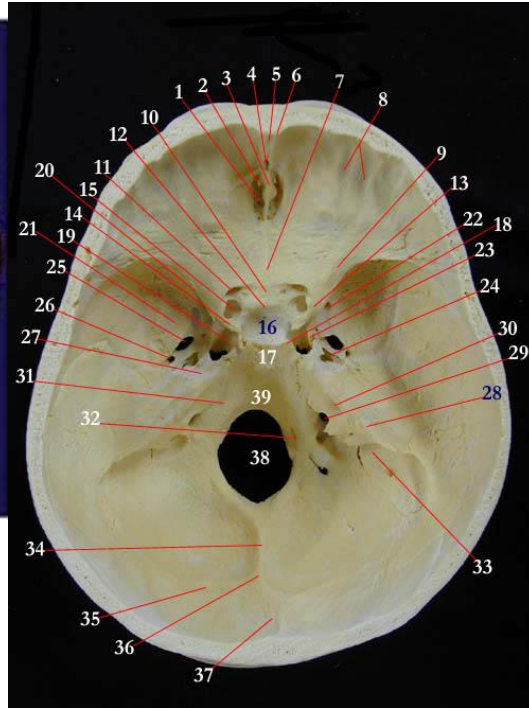
Thalamus

Capsula interna

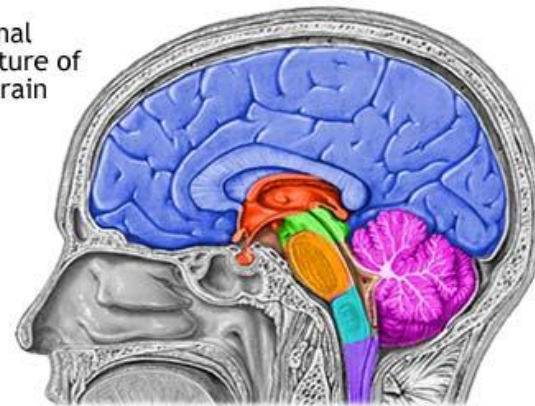
Hypothalamus



A diencephalon tulajdonképpeni helyzete az agyban



Internal structure of the brain



- Spinal cord
- Cerebellum
- Diencephalon
- Pons
- Medulla Oblongata
- Midbrain
- Cerebral hemisphere



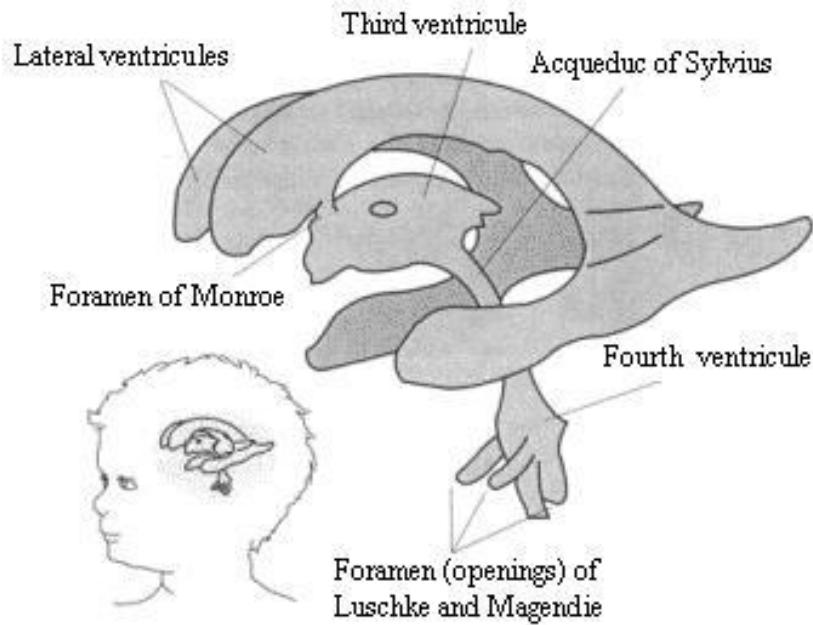
A diecephalon részei

- Thalamus
- Hypothalamus
- Metathalamus
- Epithalamus
- Subthalamus

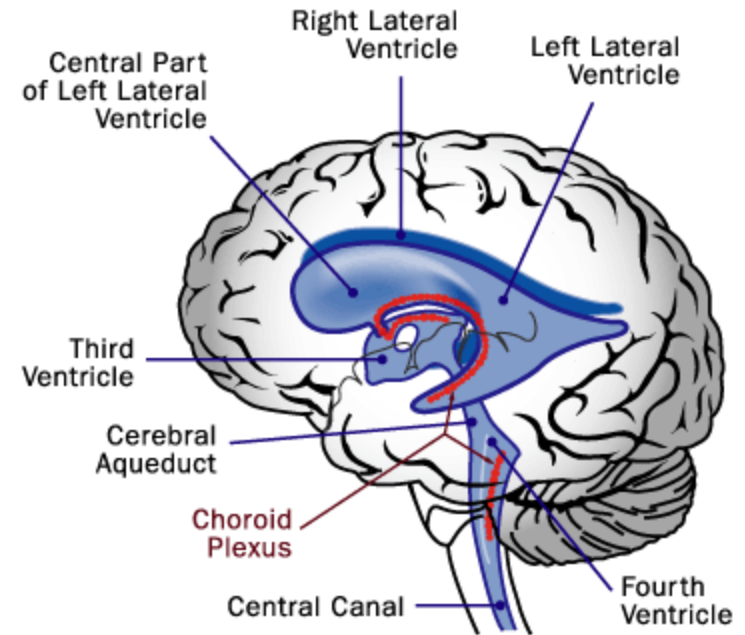
- **Ürege a III. kamra** (de elülső része fejlődéstani okokból a telencephalonhoz tartozik)



III. kamra

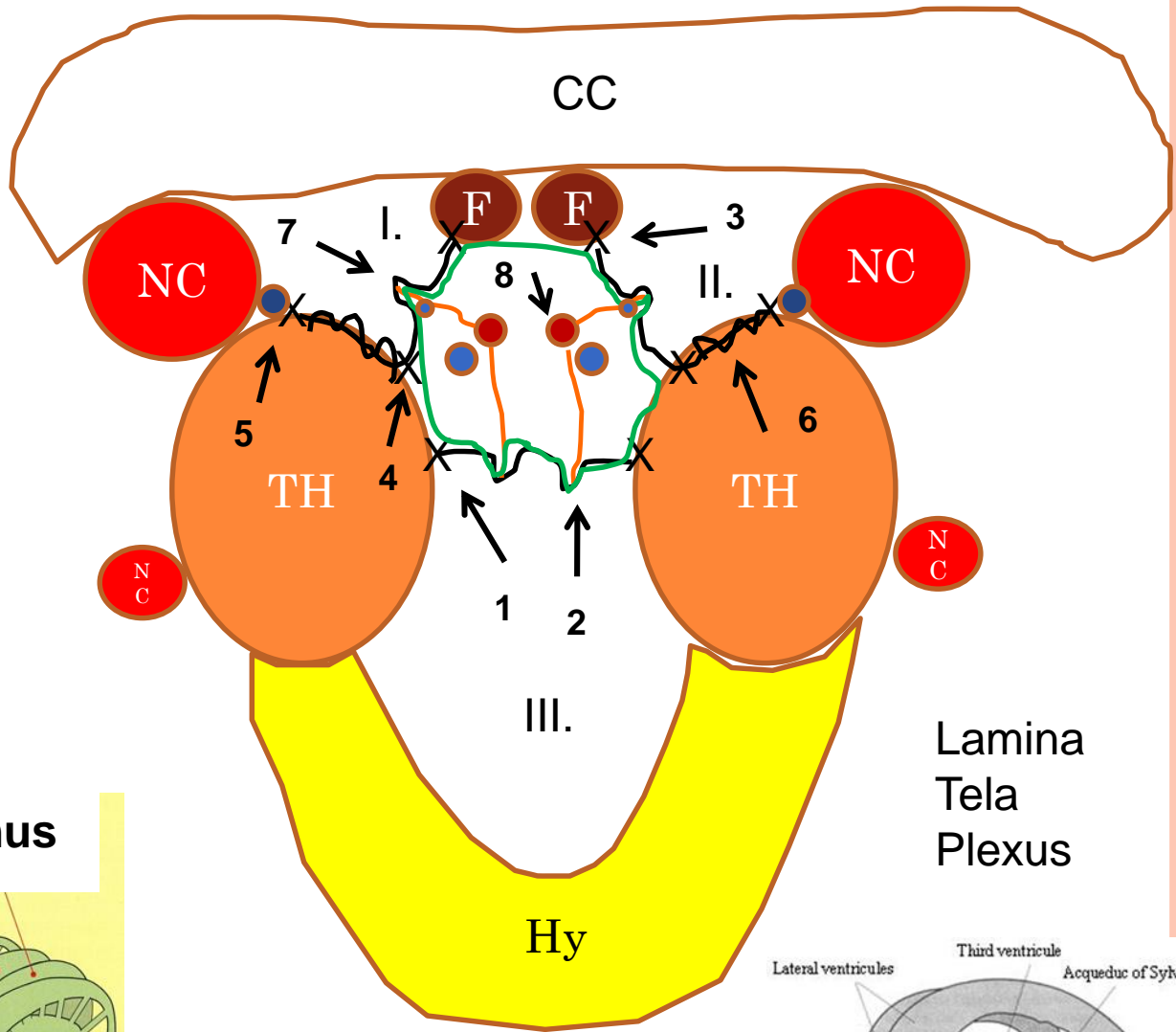


The Ventricular System of the Human Brain

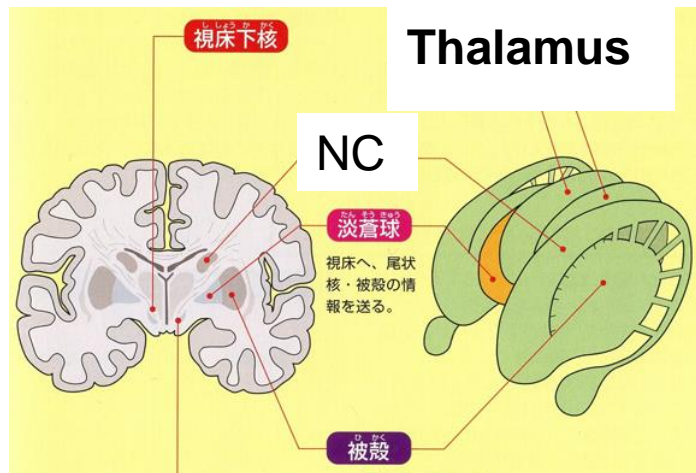


©2001 HowStuffWorks

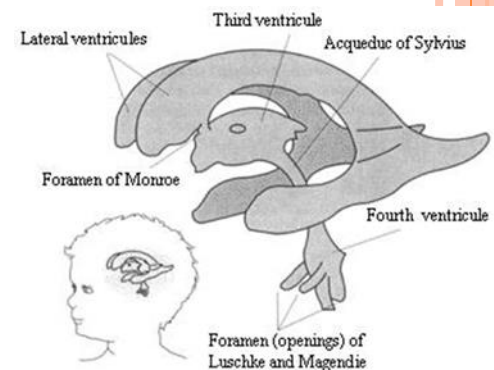




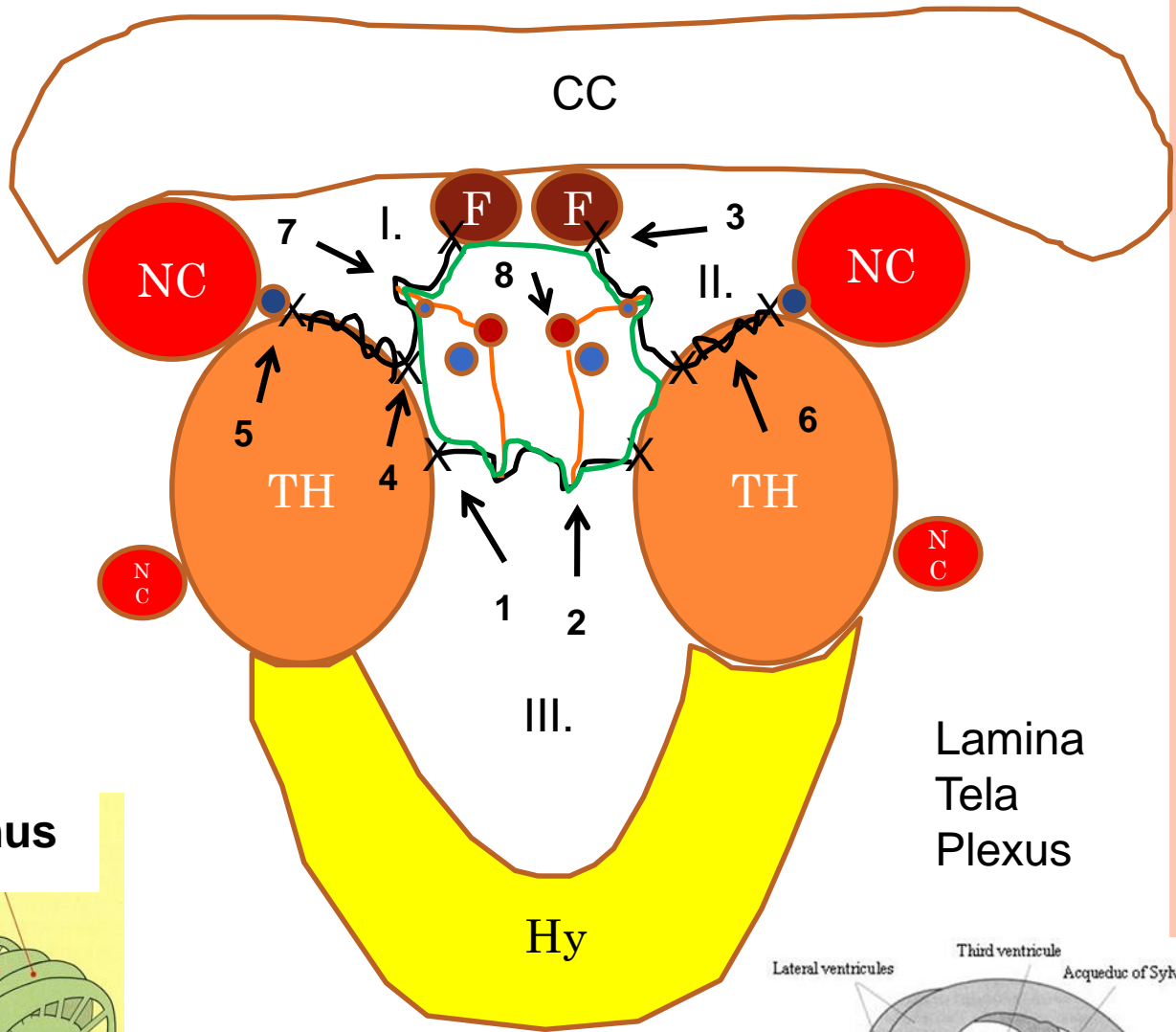
1. Stria medullaris thalami
(taenia thalami)
2. Plex. Chor. Vent. Tert.
3. Taenia fornicis
4. Taenia choroidea
5. Stria terminalis, v. thalamostriata
6. Lamina affixa
7. Plex. Chor. Vent. lat., v. choroidea
8. a. choroidea post., v. cerebri int.



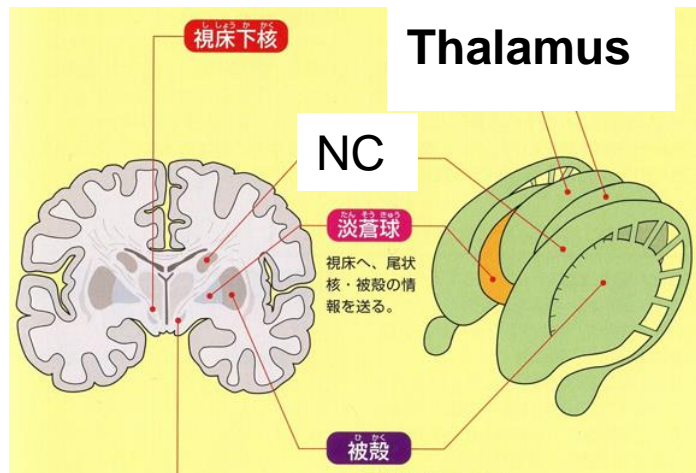
A III. kamra oldalfala:
Thalamus
Sulcus hypothalamicus
Hypothalamus



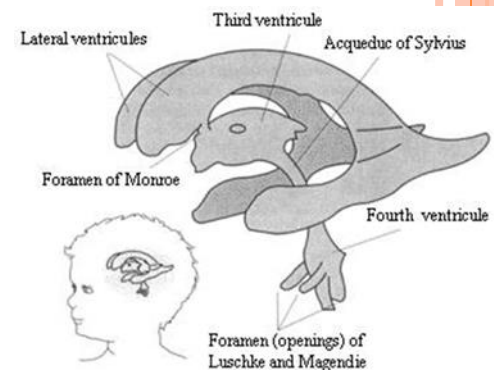
Lamina
Tela
Plexus



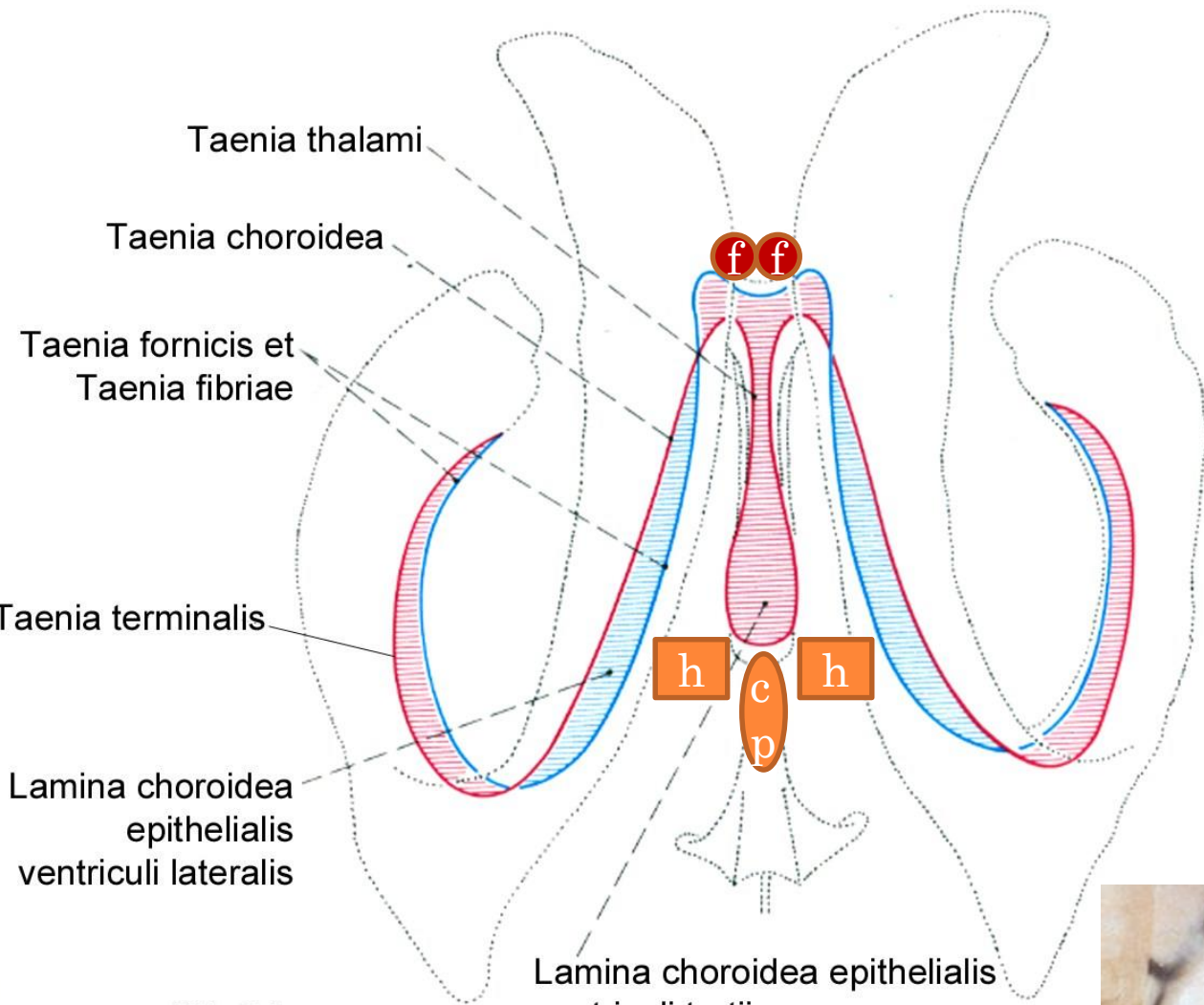
1. Stria medullaris thalami
(taenia thalami)
2. Plex. Chor. Vent. Tert.
3. Taenia fornicis
4. Taenia choroidea
5. Stria terminalis, v. thalamostriata
6. Lamina affixa
7. Plex. Chor. Vent. lat., v. choroidea
8. a. choroidea post., v. cerebri int.



A III. kamra oldalfala:
Thalamus
Sulcus hypothalamicus
Hypothalamus

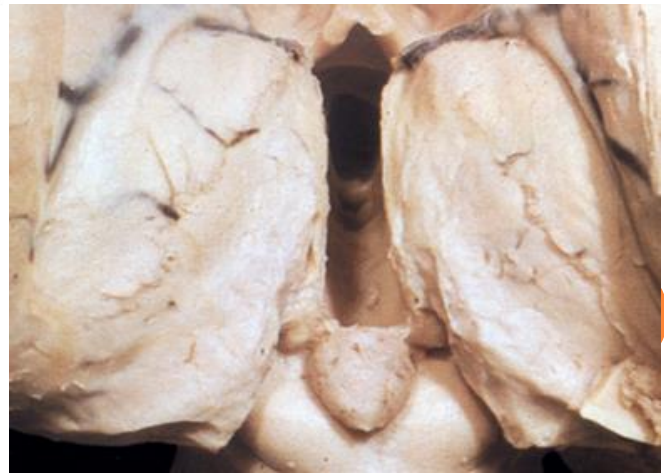
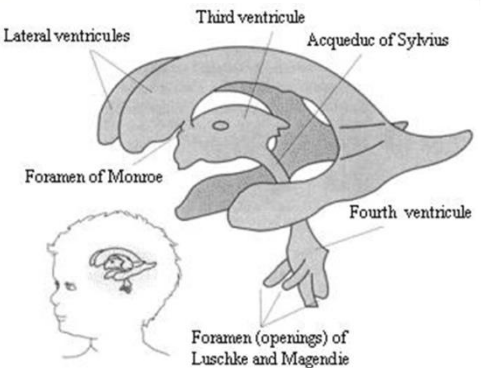


Lamina
Tela
Plexus

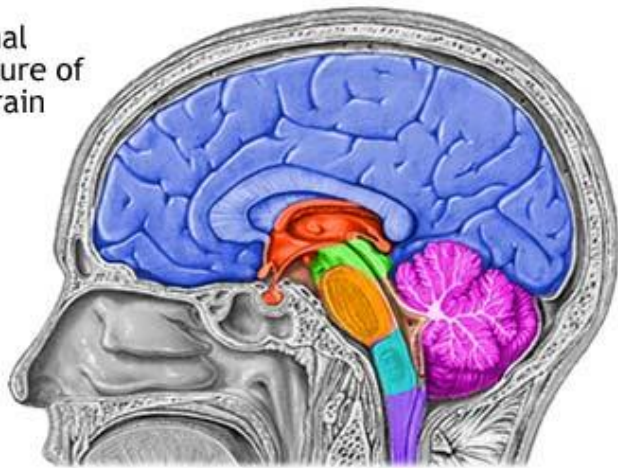


A III. kamra teteje:
Lamina choroidea epithelialis ventriculi tertii

(rögzül a stria medullares thalamin, a habenulakon, a commissura habenularumon

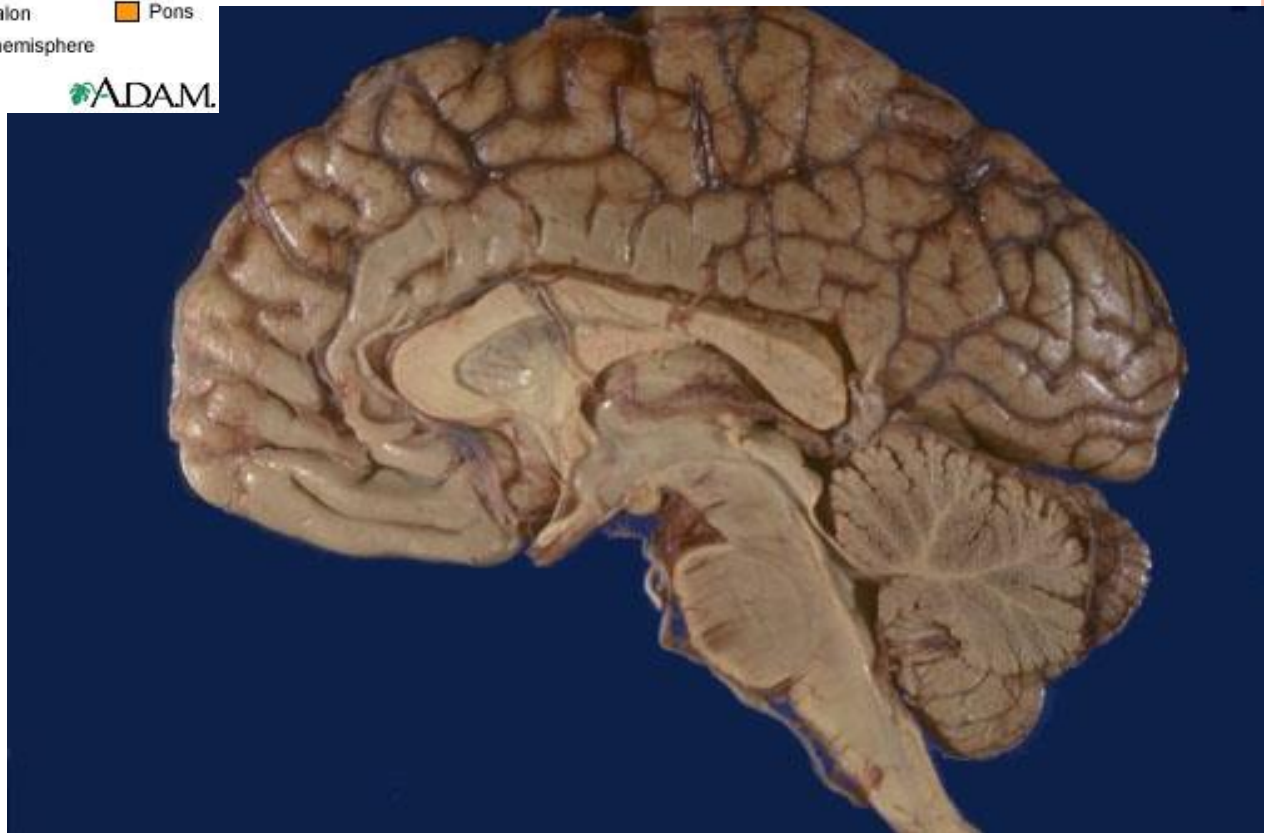


Internal structure of the brain



- Spinal cord
- Cerebellum
- Diencephalon
- Pons
- Medulla Oblongata
- Midbrain
- Cerebral hemisphere

ADAM.

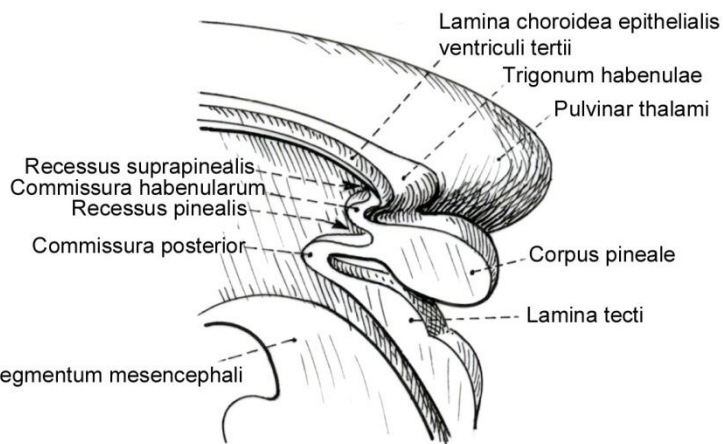
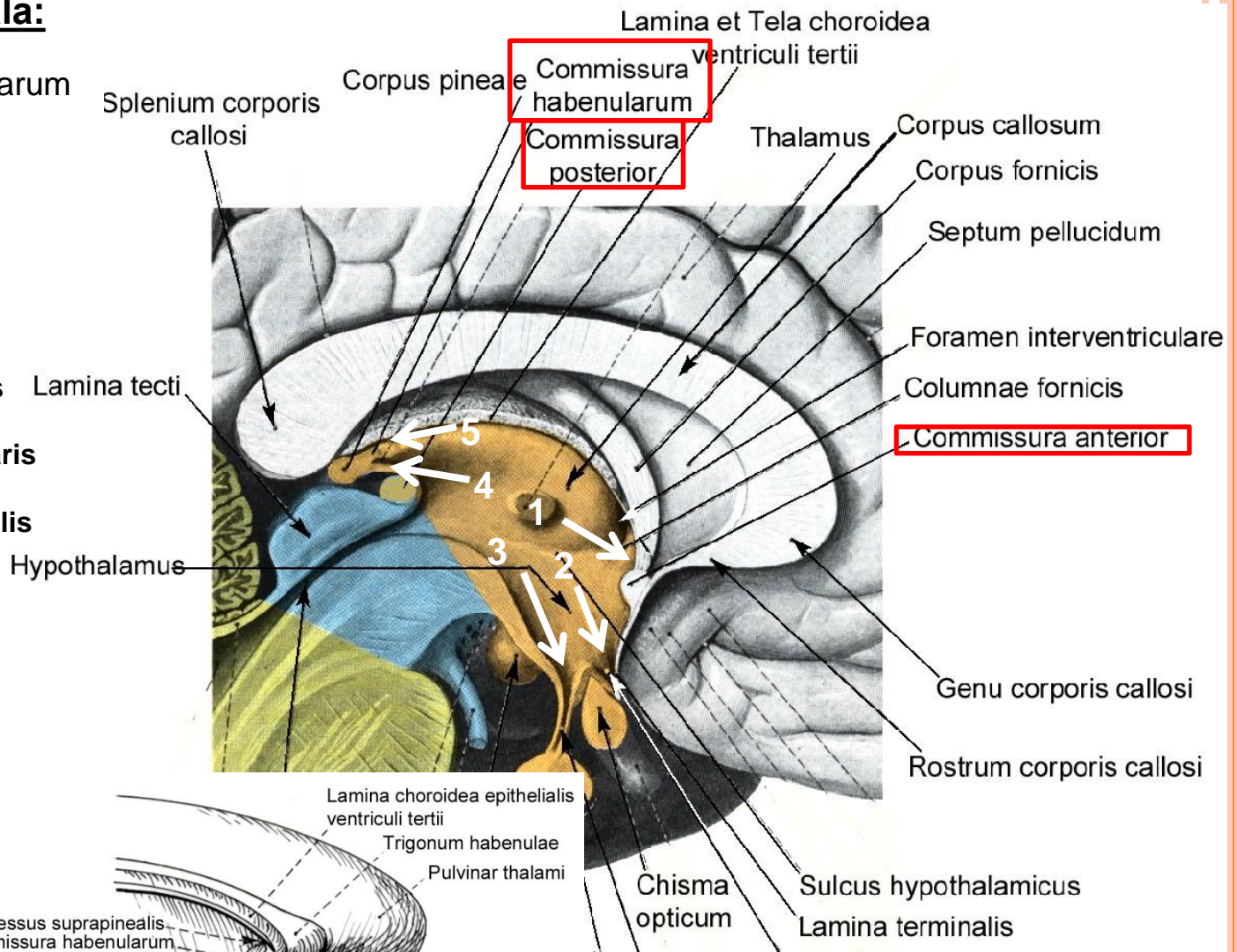


A III. kamra hátsó fala:

- 1) Commissura habenularum
- 2) Commissura post.

A III: kamra kiszögelései:

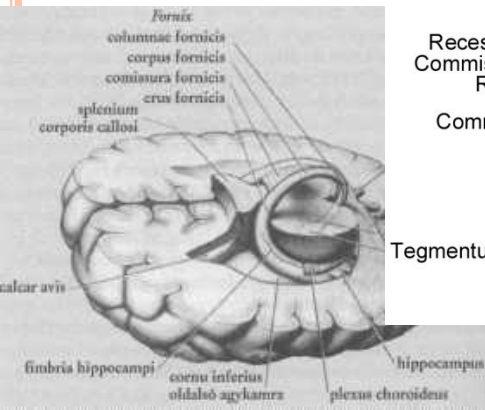
- 1) Recessus triangularis
- 2) Recessus opticus
- 3) Recessus infundibularis
- 4) Recessus pinealis
- 5) Recessus suprapinealis

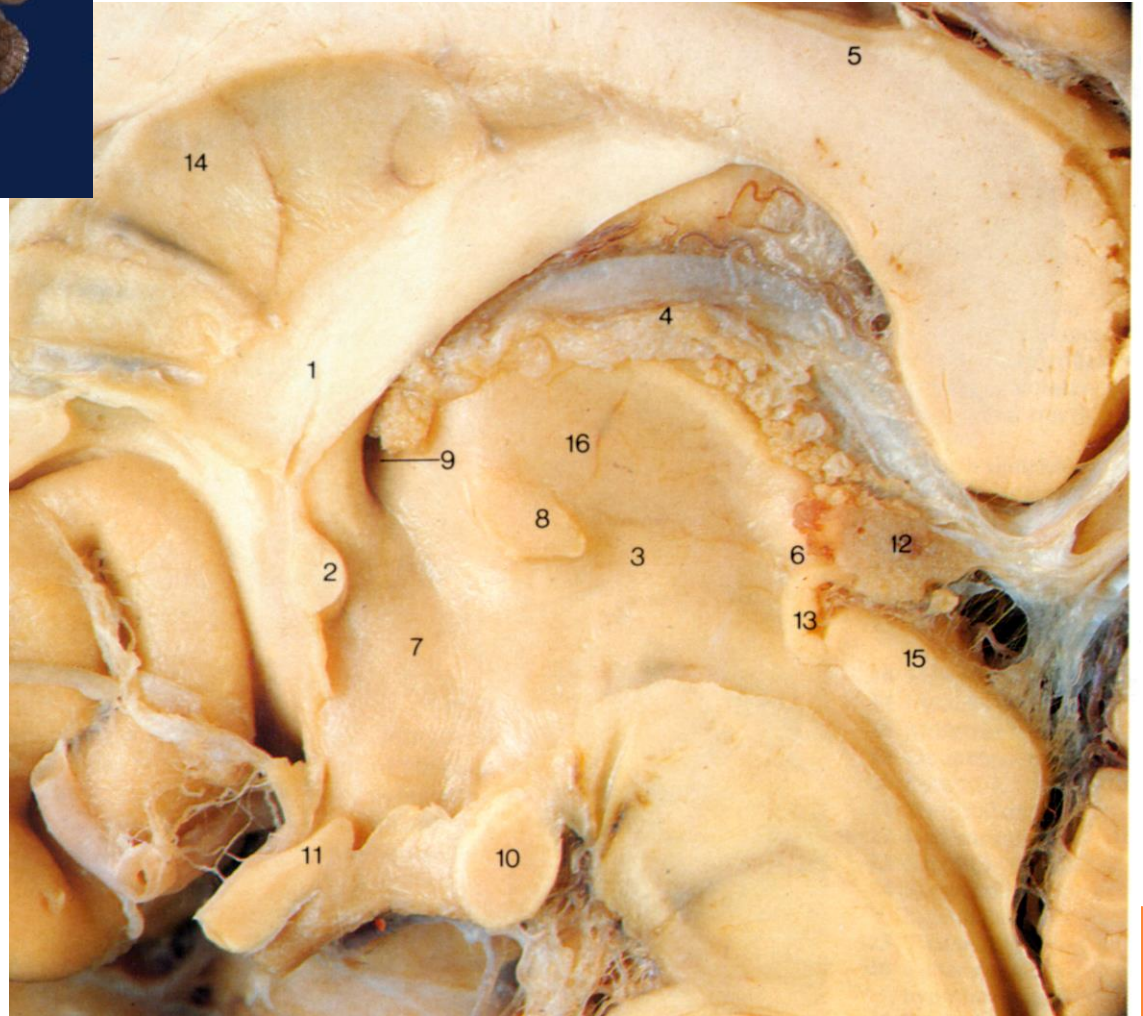
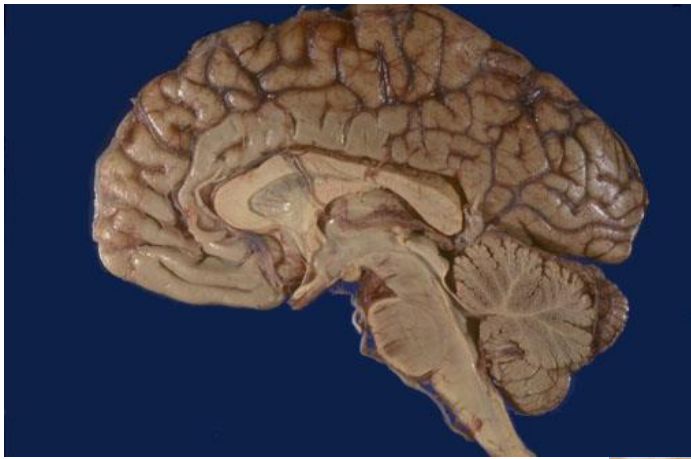


3) Corpora mamillaria

A III. kamra elülső fala:

- 1) Columnae fornicis,
- 2) Lamina rostralis (rostrum corporis callosi),
- 3) Commissura ant.,
- 4) Lamina terminalis

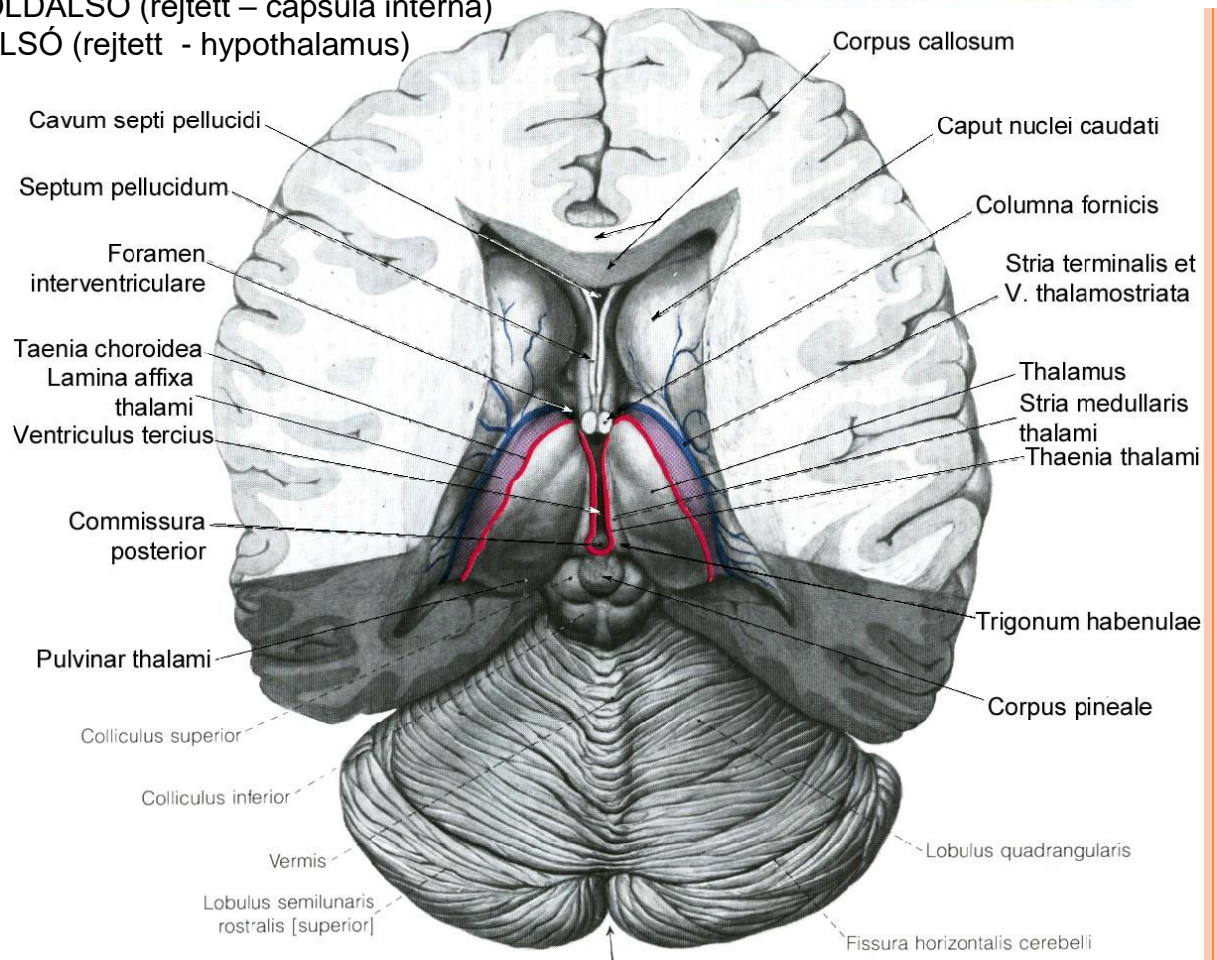
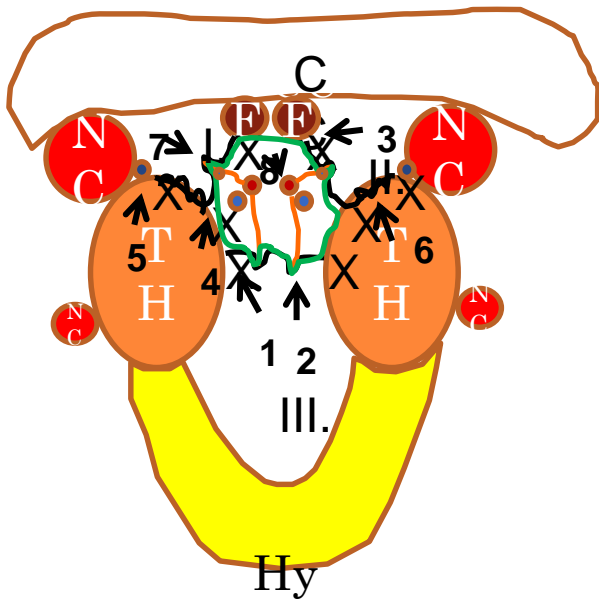
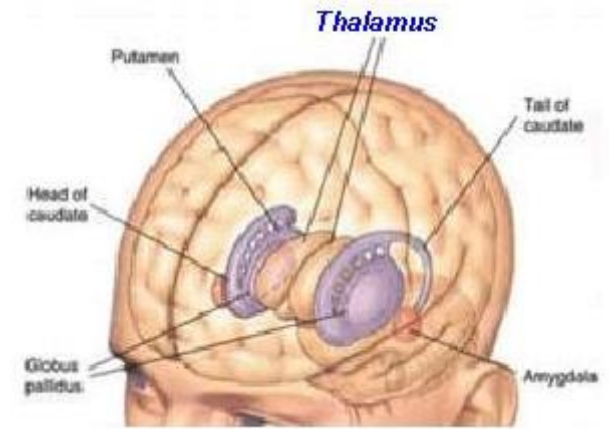
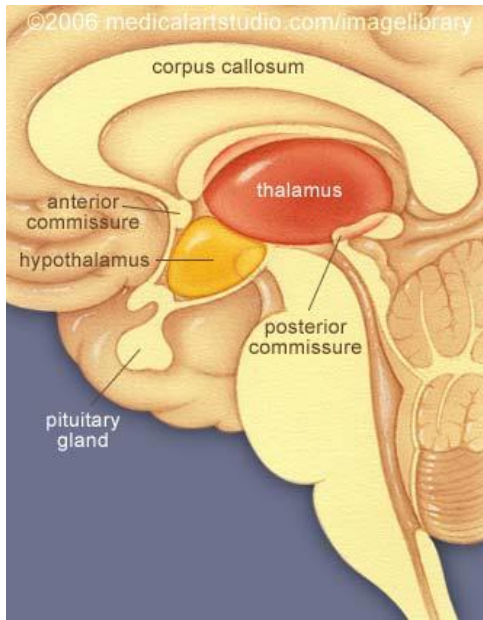




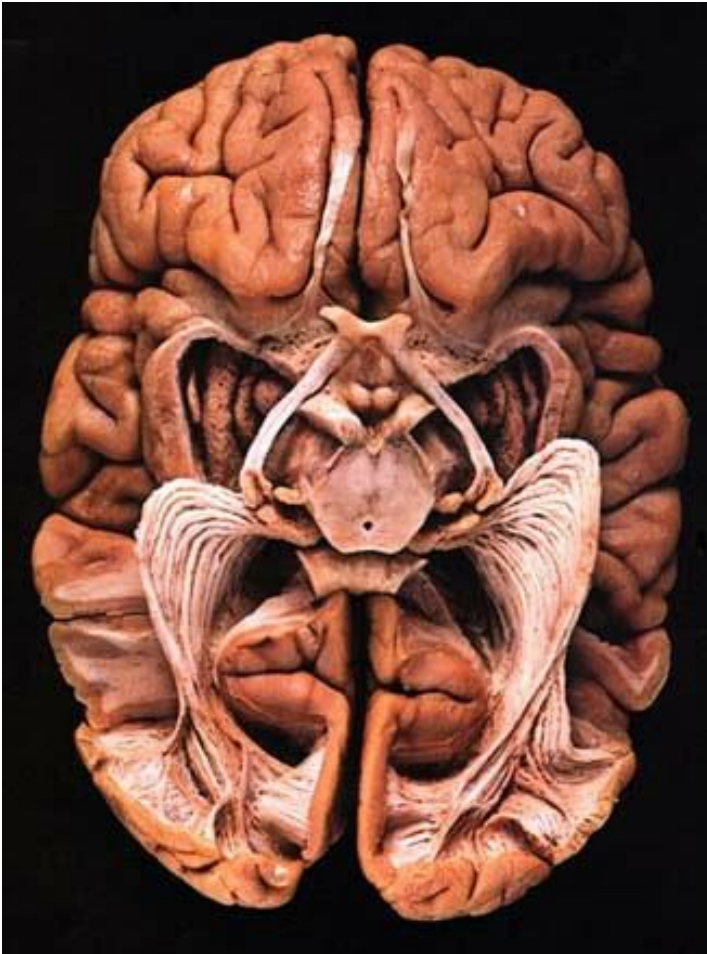
□ Thalamus

Elülső (NC + fornix takarása) és hátsó vég (pulvinar), valamint négy felszín határolja

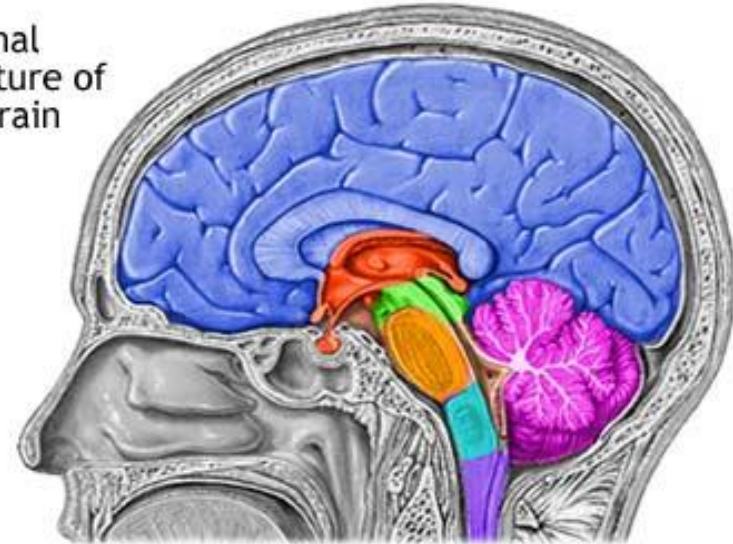
- 1) MEDIALIS (sulcus hypotalamicus és a str. Med. thalami között)
- 2) FELSŐ (taenia choroidea kettéosztja) - stria terminalis, vena thalamostriata
- 3) OLDALSÓ (rejtett – capsula interna)
- 4) ALSÓ (rejtett - hypothalamus)



□ Hypothalamus



Internal structure of the brain



Spinal cord Cerebellum Diencephalon Pons
Medulla Oblongata Midbrain Cerebral hemisphere

ADAM.

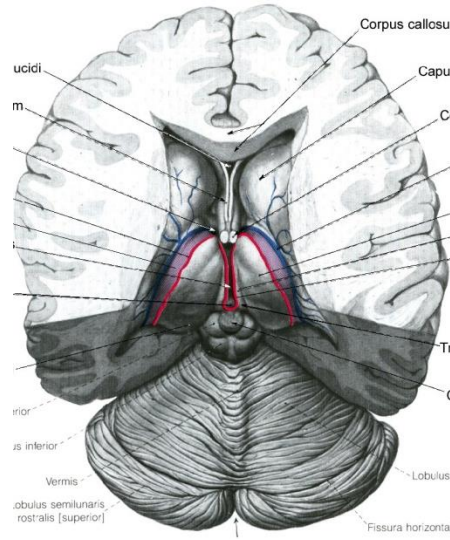
A diencephalonnak a thalamus alatt (sulcus hypothalamicus) található területe.

Preopticus területtől, a középagy tegmentumáig terjed.



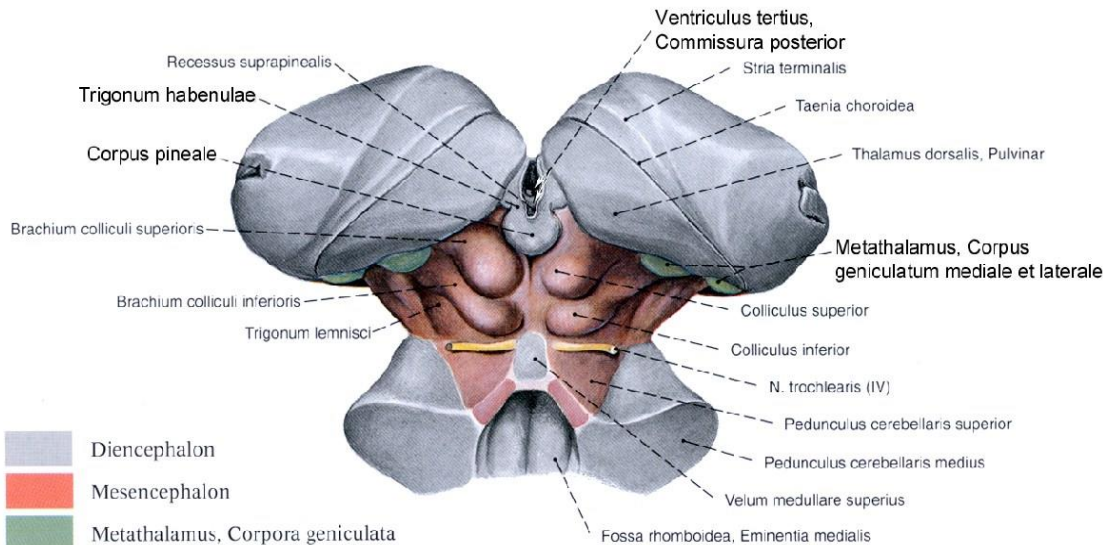
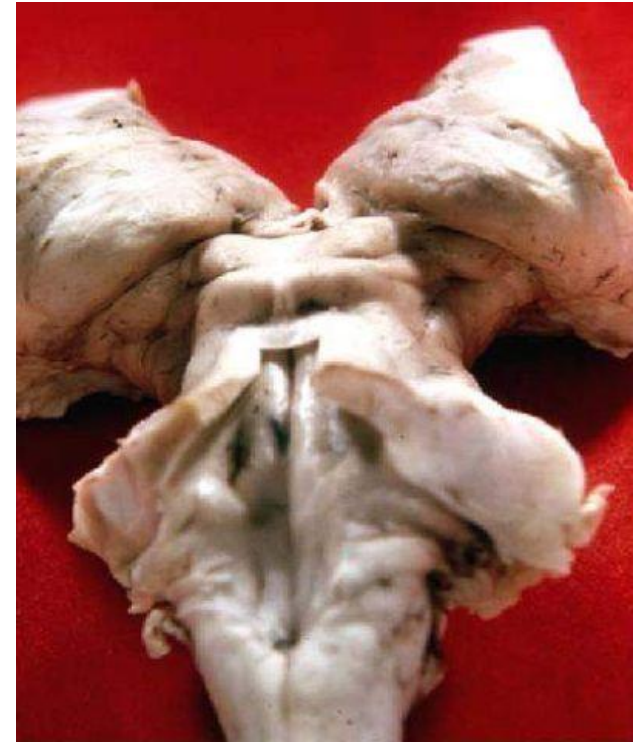
Epithalamus

Striae medullaris thalami,
Habenulae,
Commissura habenularum,
Trigonum habenulae,
Nuclei habenulae,
Commissura post.,
Corpus pineale (epiphysis)



Metathalamus

Corpus geniculatum med.
Corpus geniculatum lat.



- Diencephalon
- Mesencephalon
- Metathalamus, Corpora geniculata

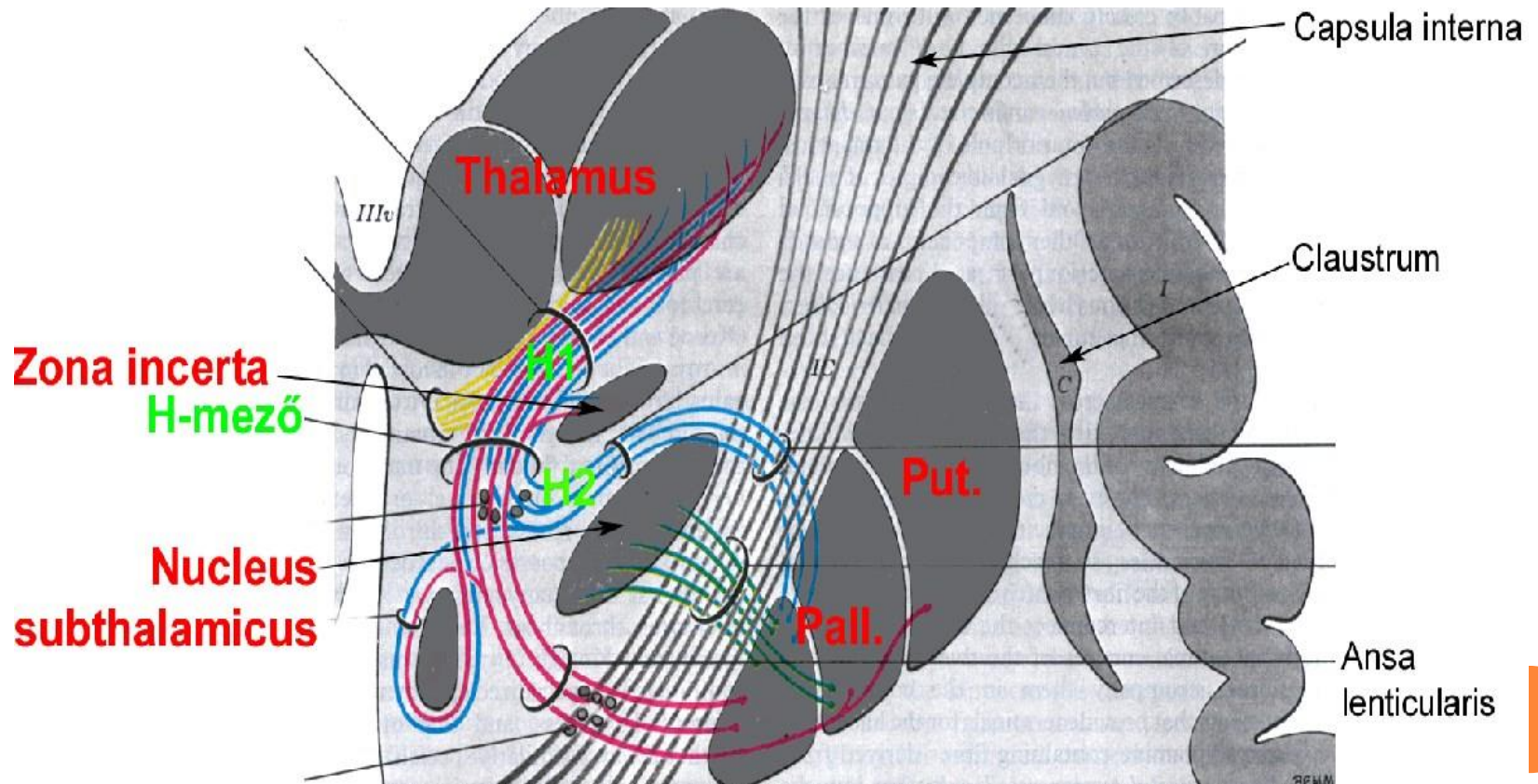


□ Subthalamus

Nucleus subthalamicus (Luysi)

Zona incerta

Forel –féle H, H1, H2 mezők



A diencephalon vérellátása

Artériásan

Elülső részét:

- a. cerebri anterior
- a. cerebri media (a. thalamostriata)

Hátsó részét:

- a. cerebri posterior
- r. communicans posterior

Vénás vére:

Részben:

- v. cerebri interna

Részben:

- v. basalisba ömlik



**Köszönöm megtisztelő
figyelmüket!!!**

