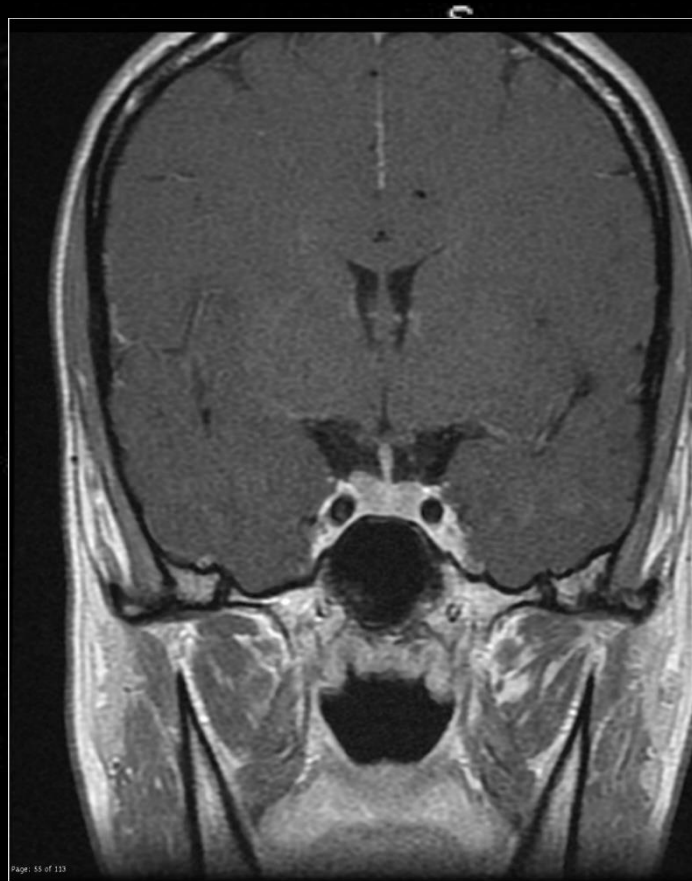
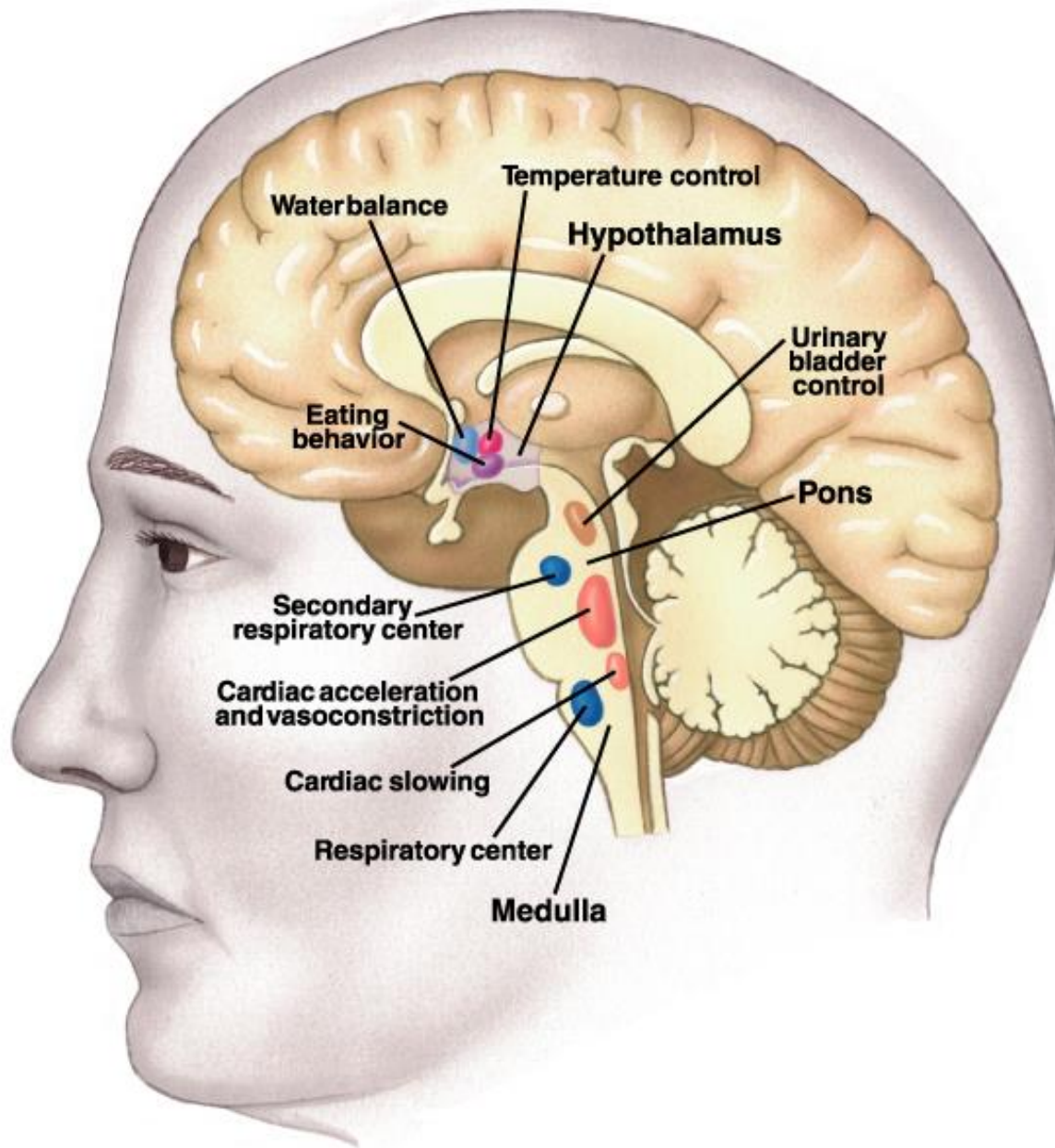


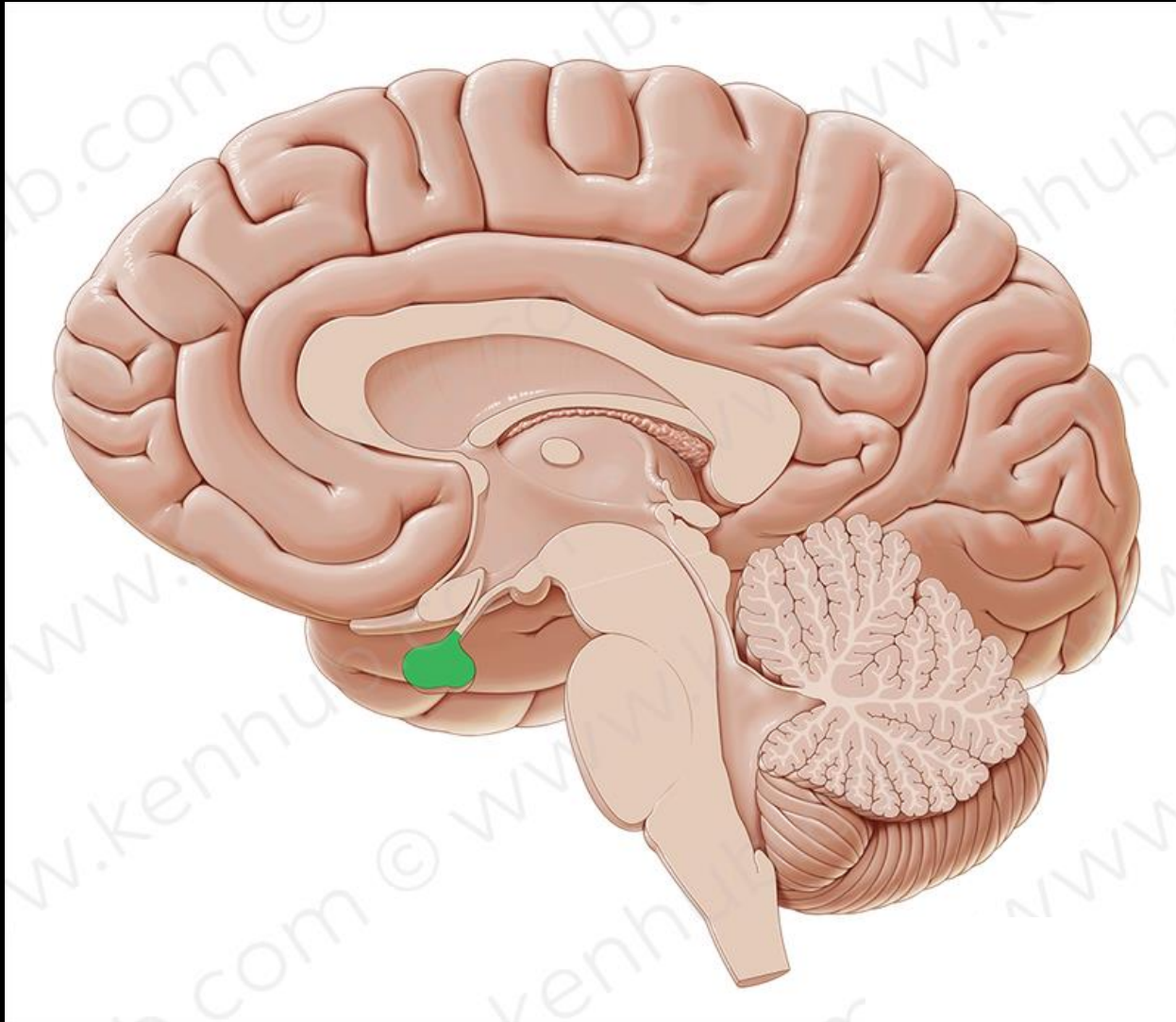
Hypothalamo-hypophysealis rendszer

Barna János

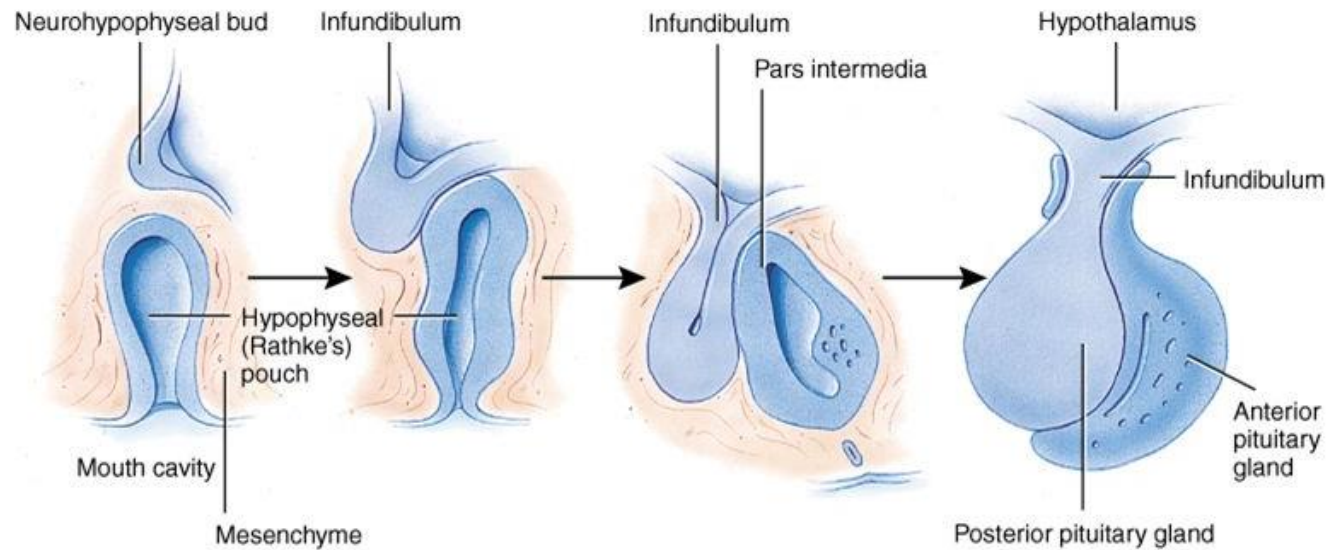




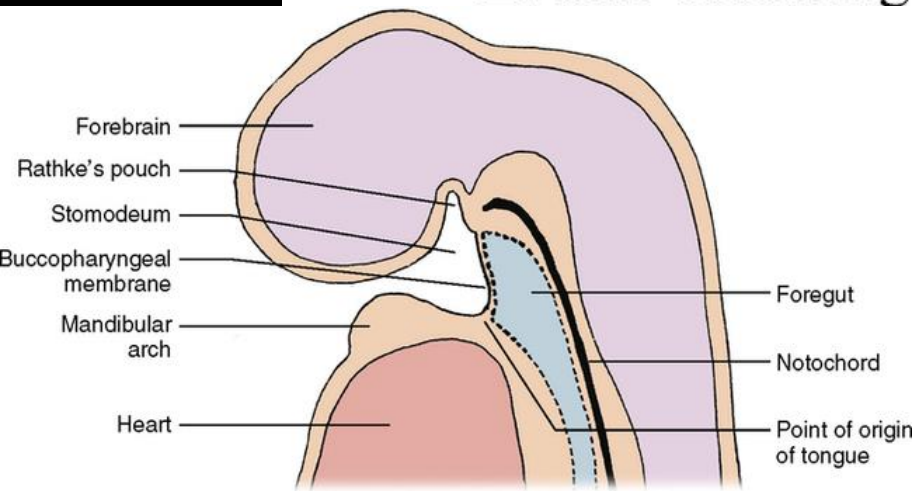
Hypophysis/gl. pituitaria



Development of Pituitary Gland



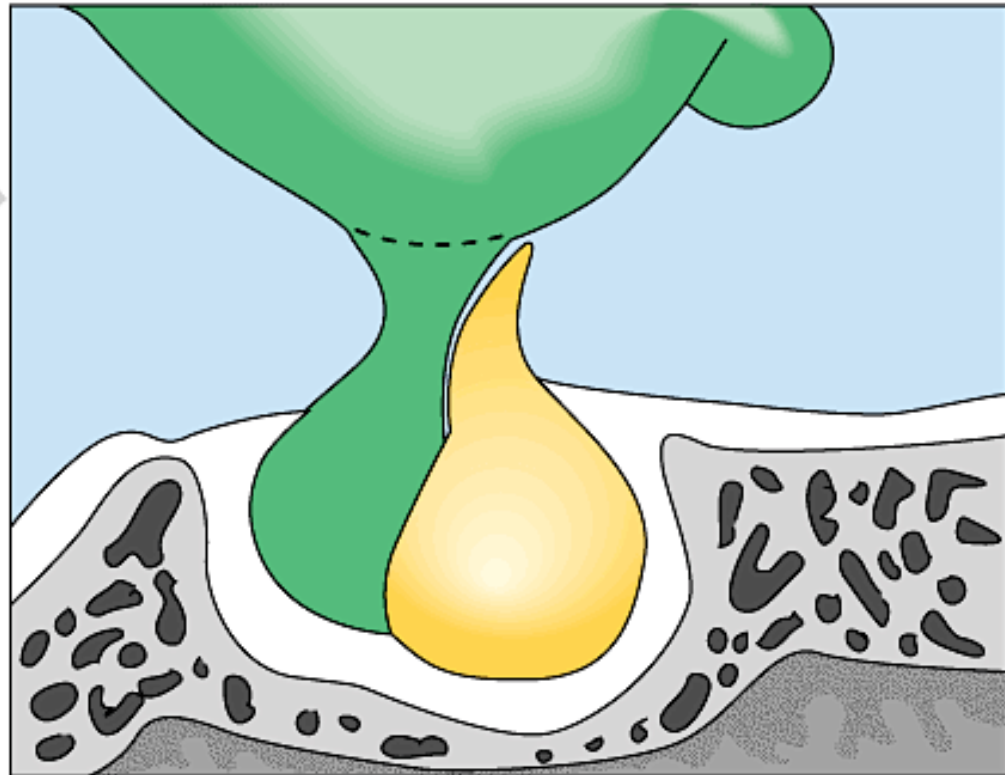
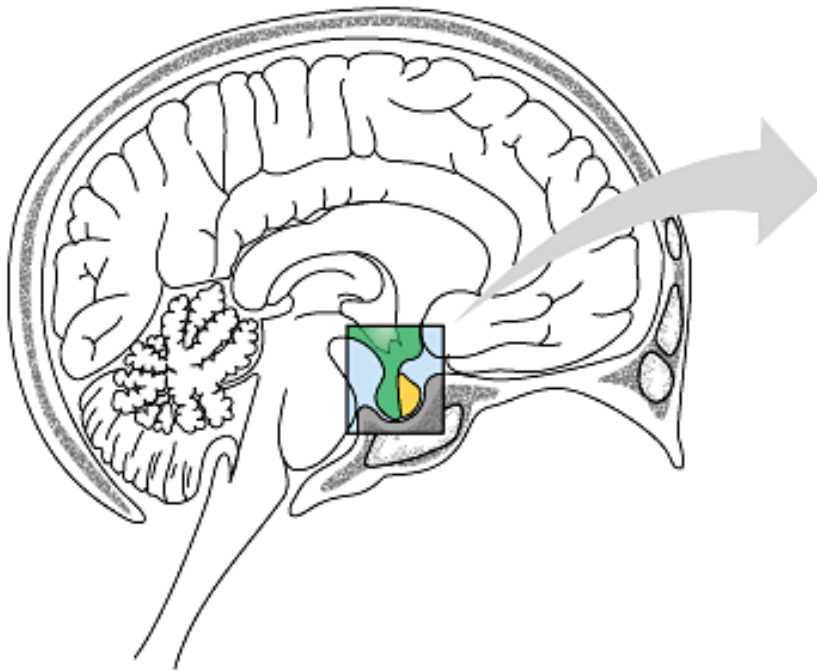
- Events occurring between 5 and 16 weeks of age



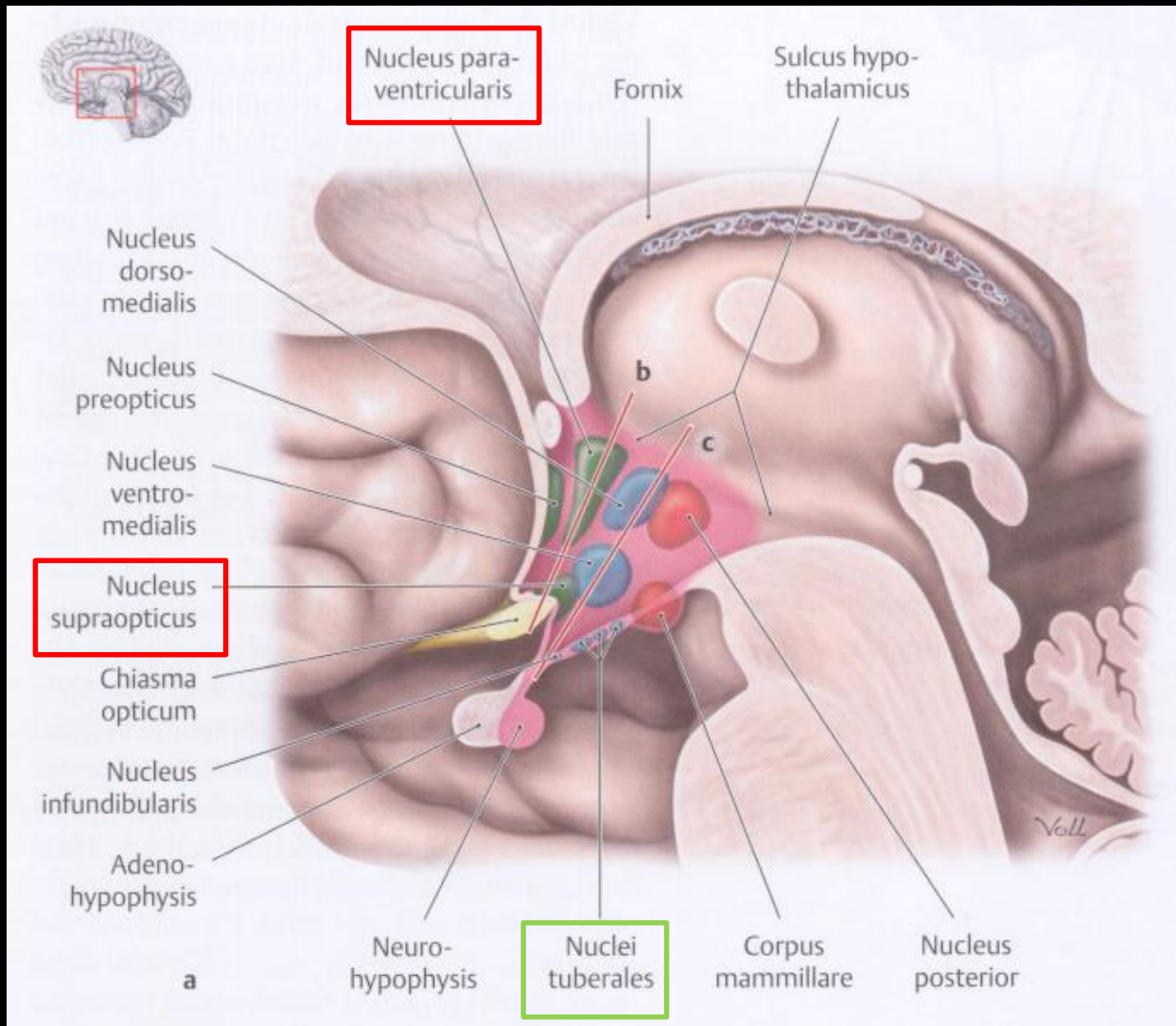
Hypophysis

neurohypophysis

adenohypophysis



A hypothalamus **Magnocellularis-** és **parvocellularis** magok (nuclei tuberales)



A hypothalamus tuberalis magjainak hypophysisre ható hormonjai

- Releasing hormonok:

- Somatotrop (Growth hormon) releasing hormon (STRH; GHRH)

$\xrightarrow{+}$ GH (STH)

- Corticotrop hormon releasing hormon (CRH) $\xrightarrow{+}$ ACTH

- Tyreotrop releasing hormon (TRH) $\xrightarrow{+}$ TSH

- Gonadotrop releasing hormon (GnRH) $\xrightarrow{+}$ FSH, LH

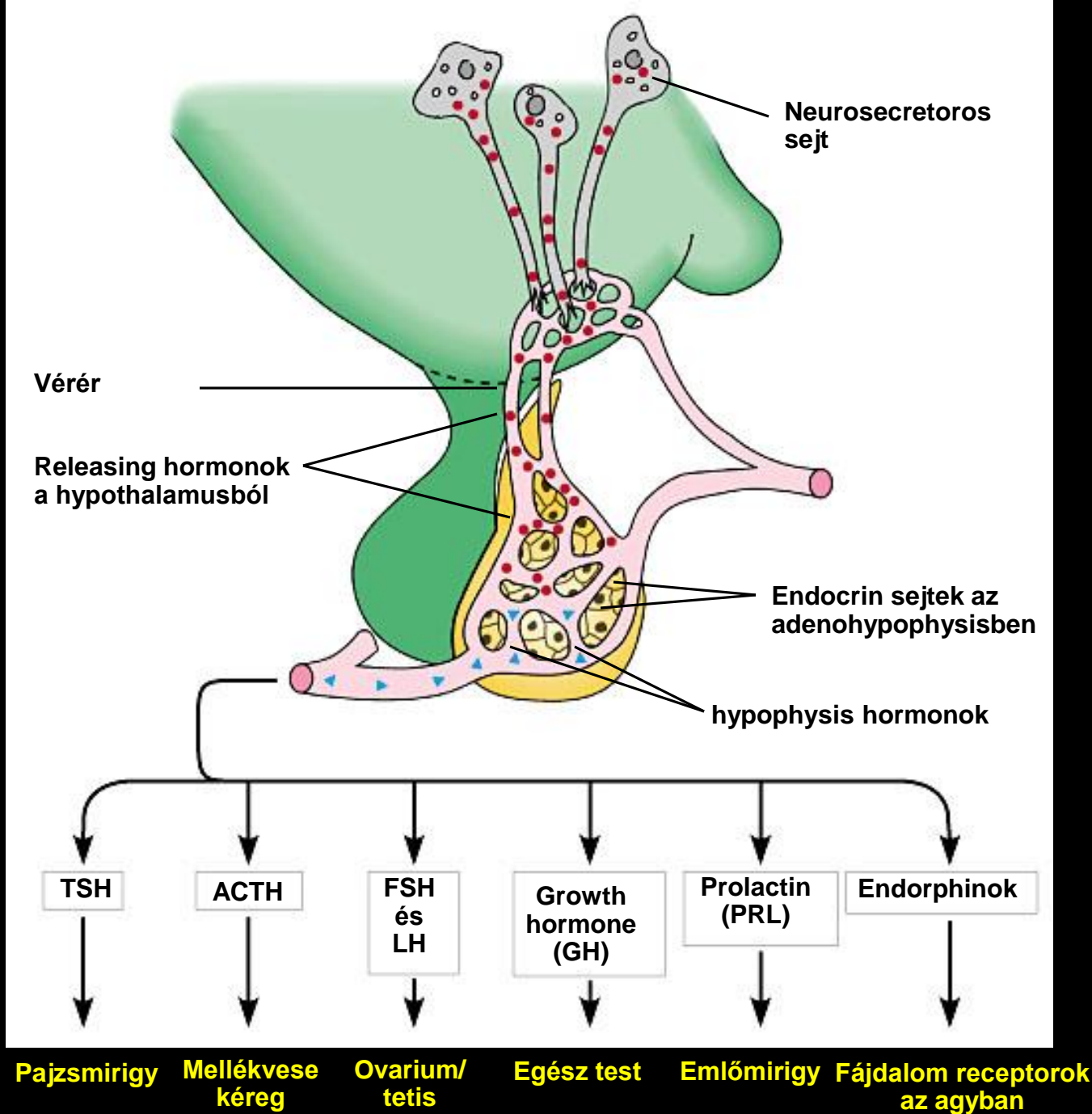
- Prolaktin releasing hormon (PRH) $\xrightarrow{+}$ LTH (prolactin)

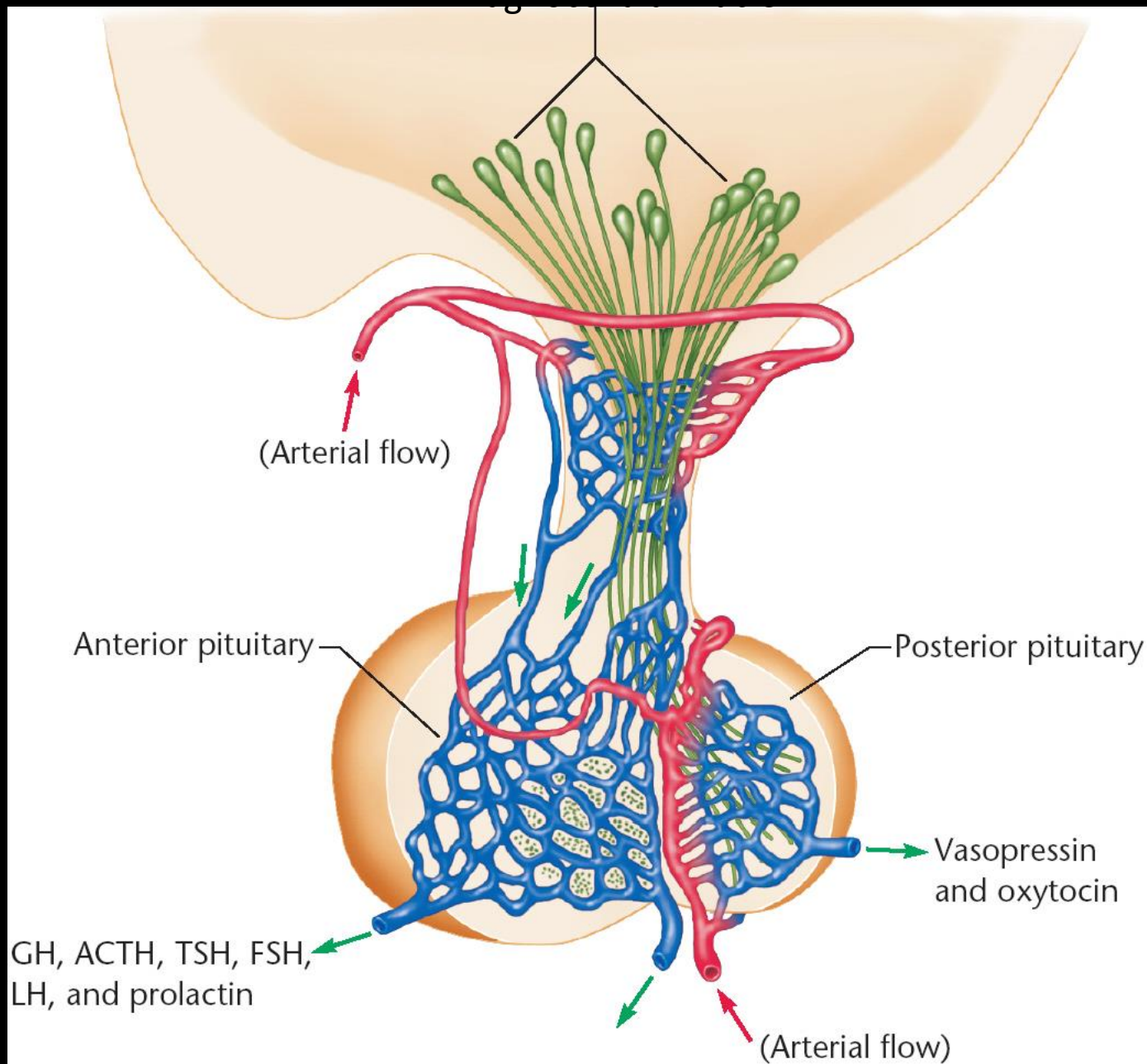
- Release inhibiting hormonok:

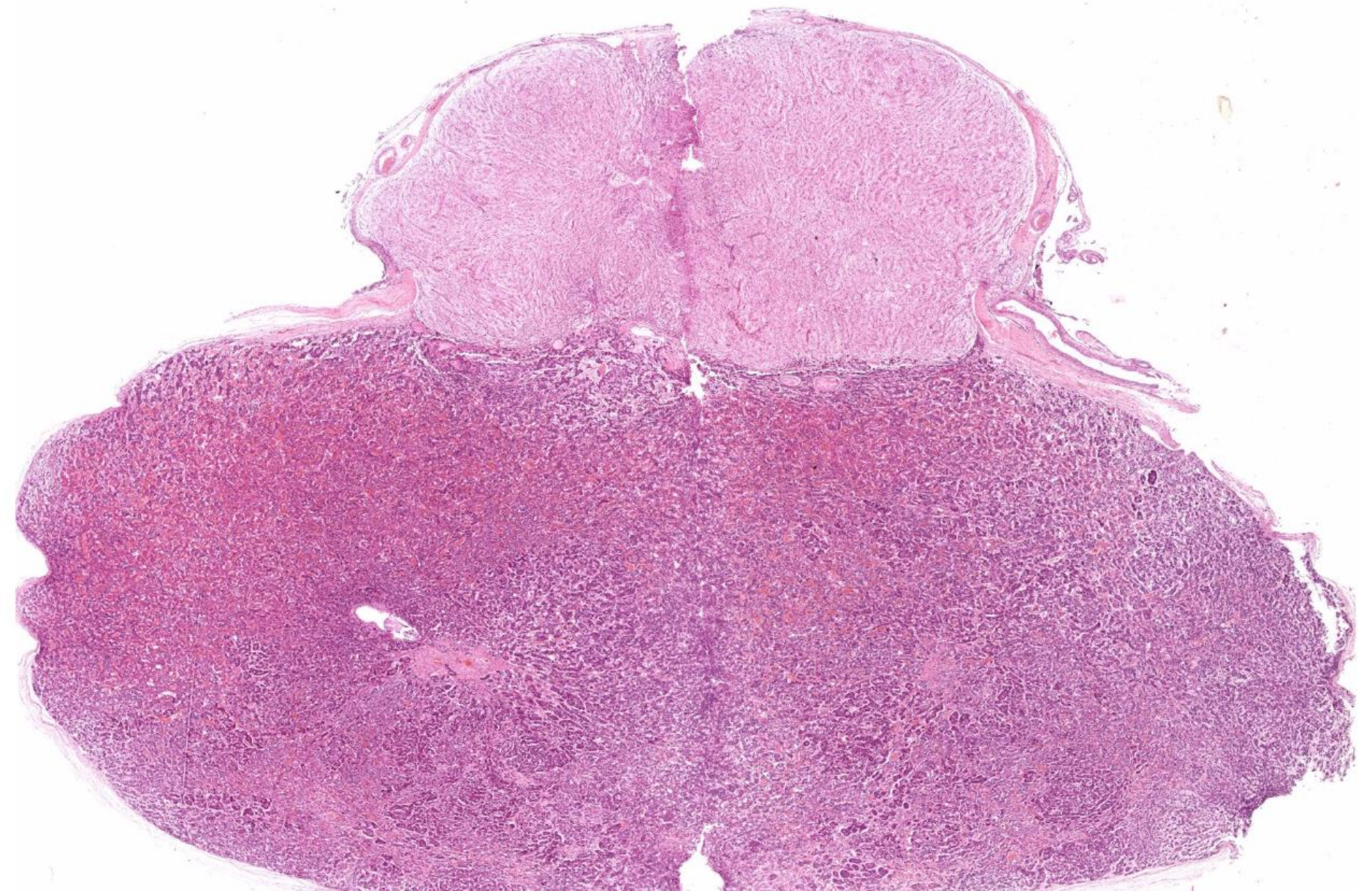
- Growth hormon inhibiting hormon (GHIH) = somatostatin

$\downarrow -$
GH (STH), TSH

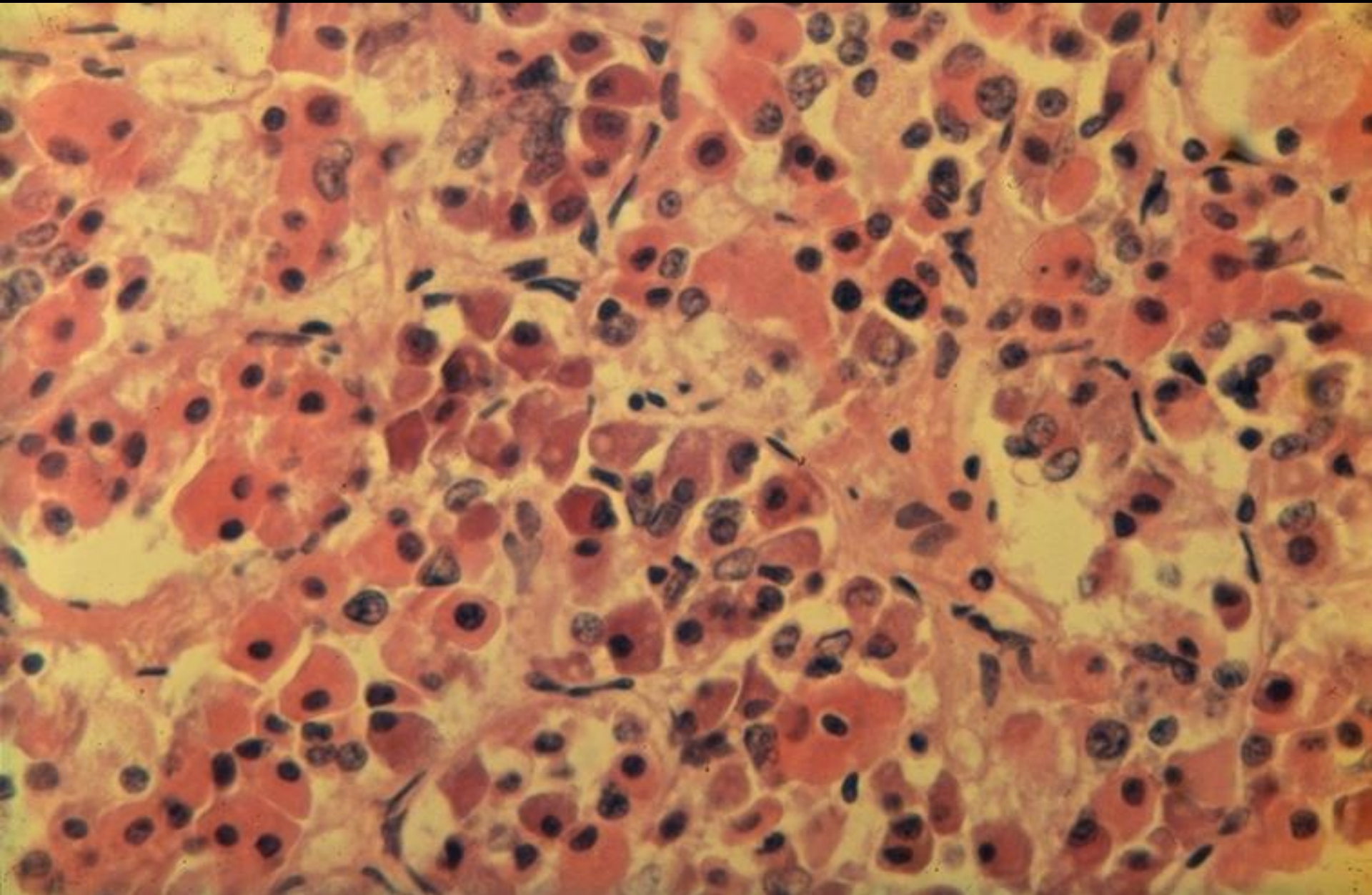
- Prolactin inhibiting hormon (PIH) = dopamin $\xrightarrow{-}$ LTH



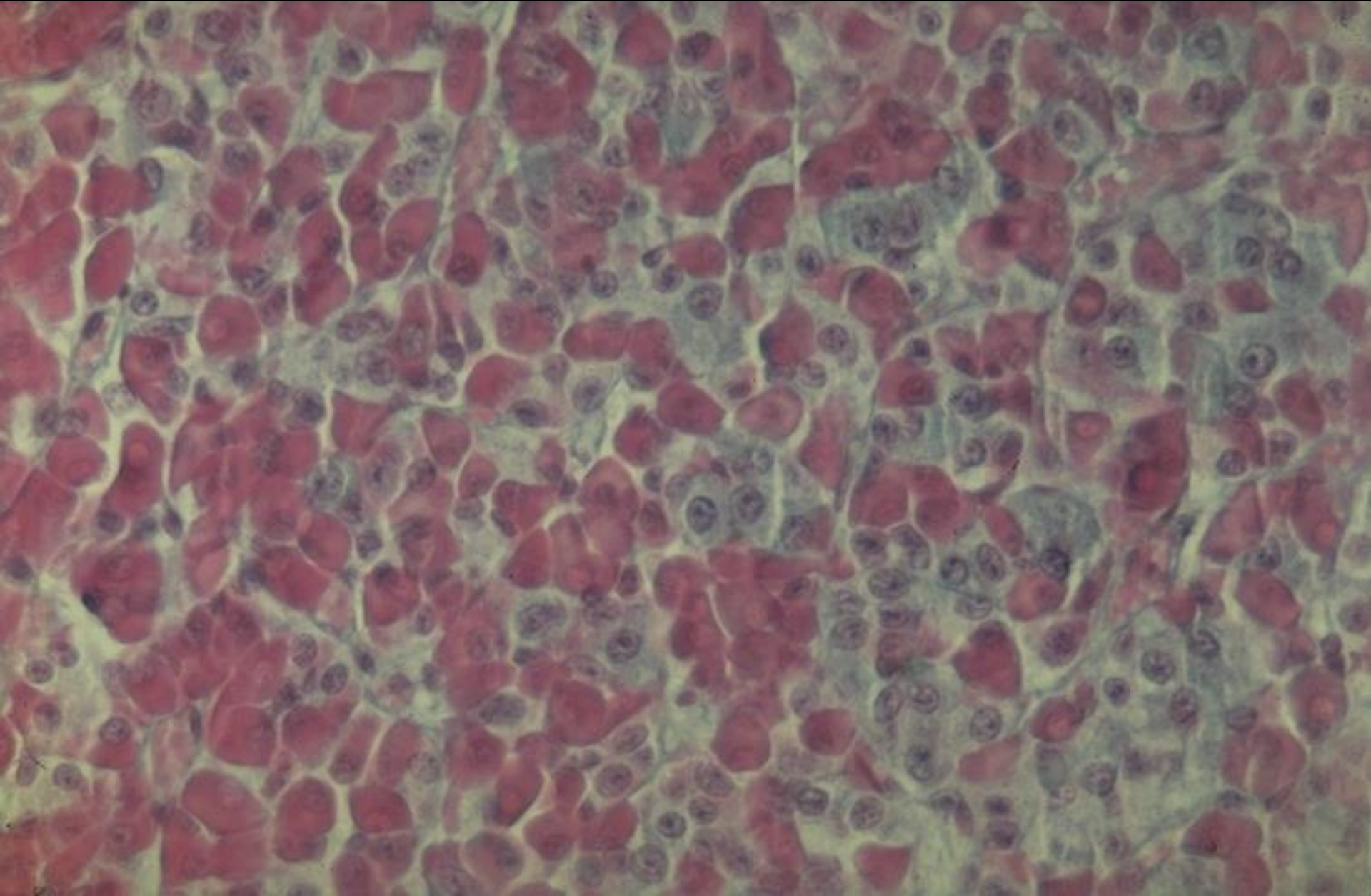




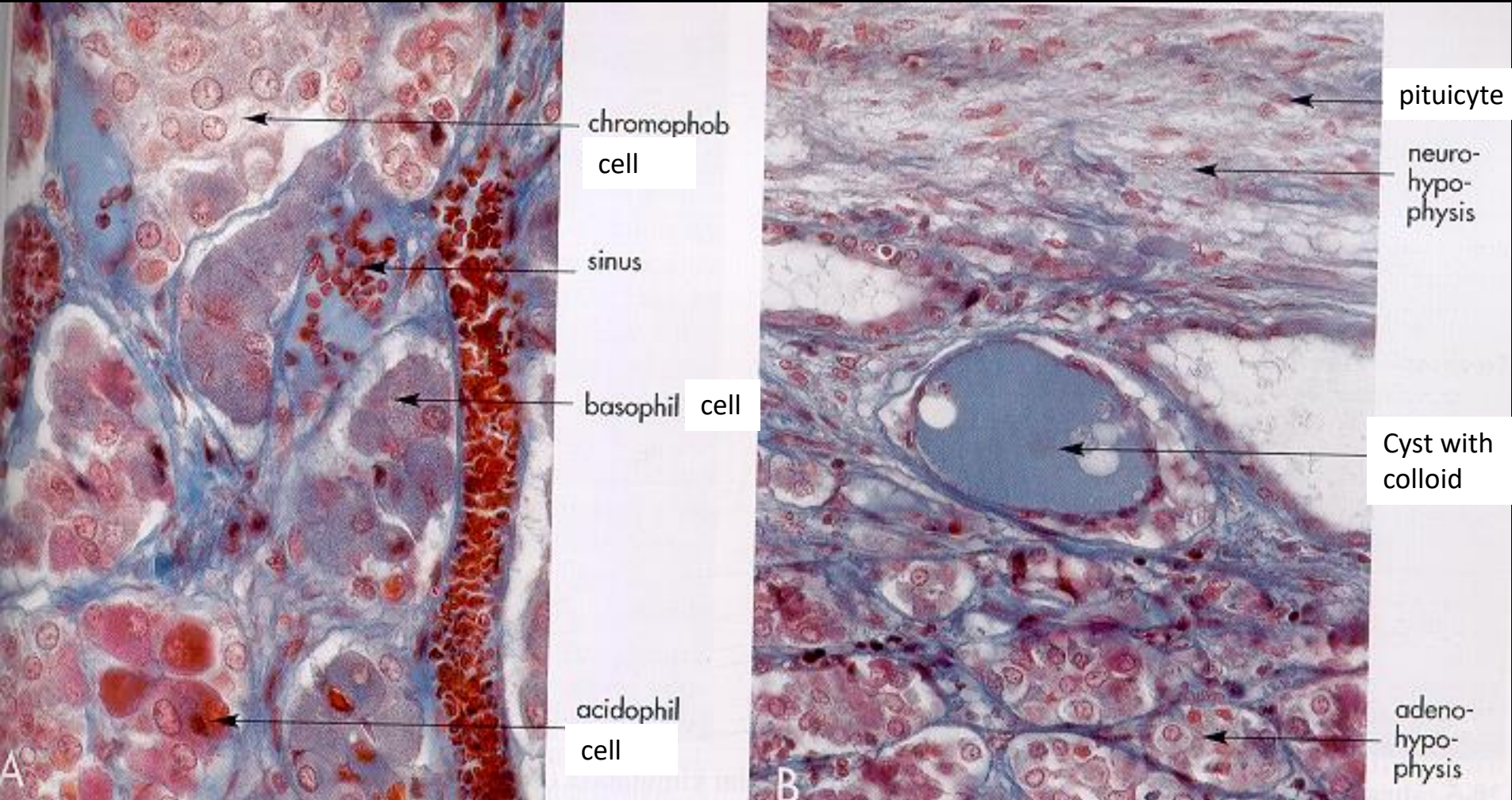
Chromophob és chromophil sejtek



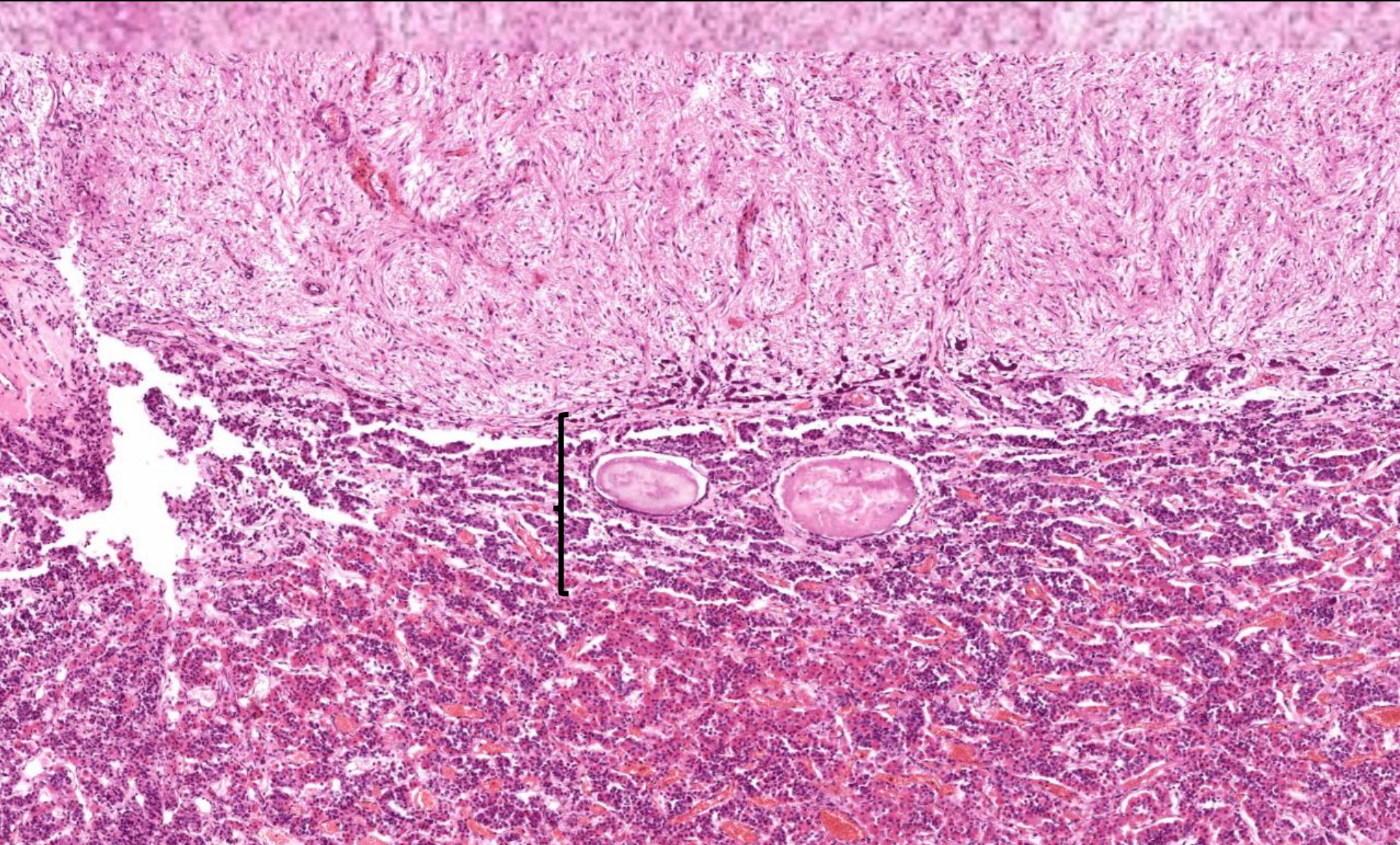
Chromophob és chromophil sejtek

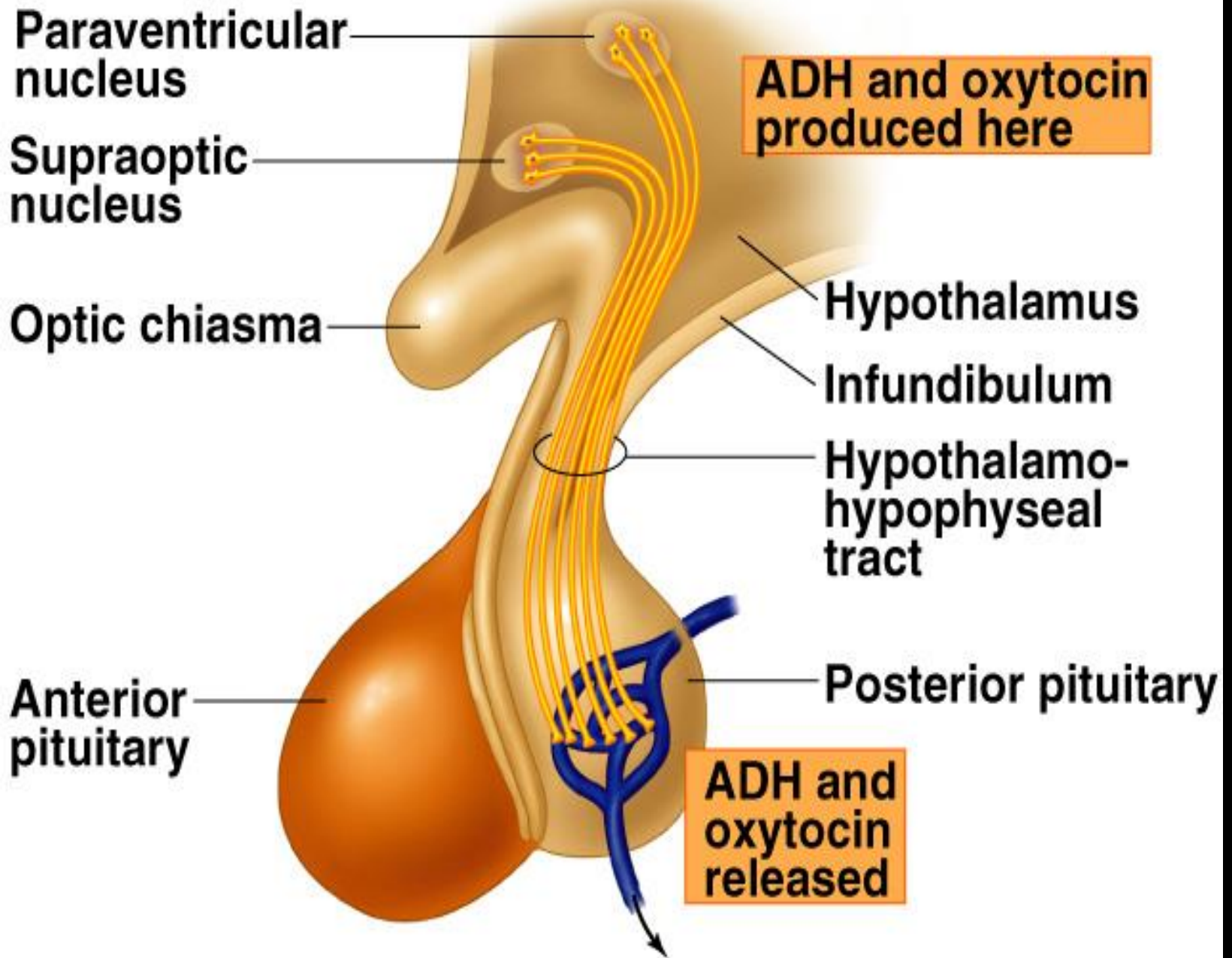


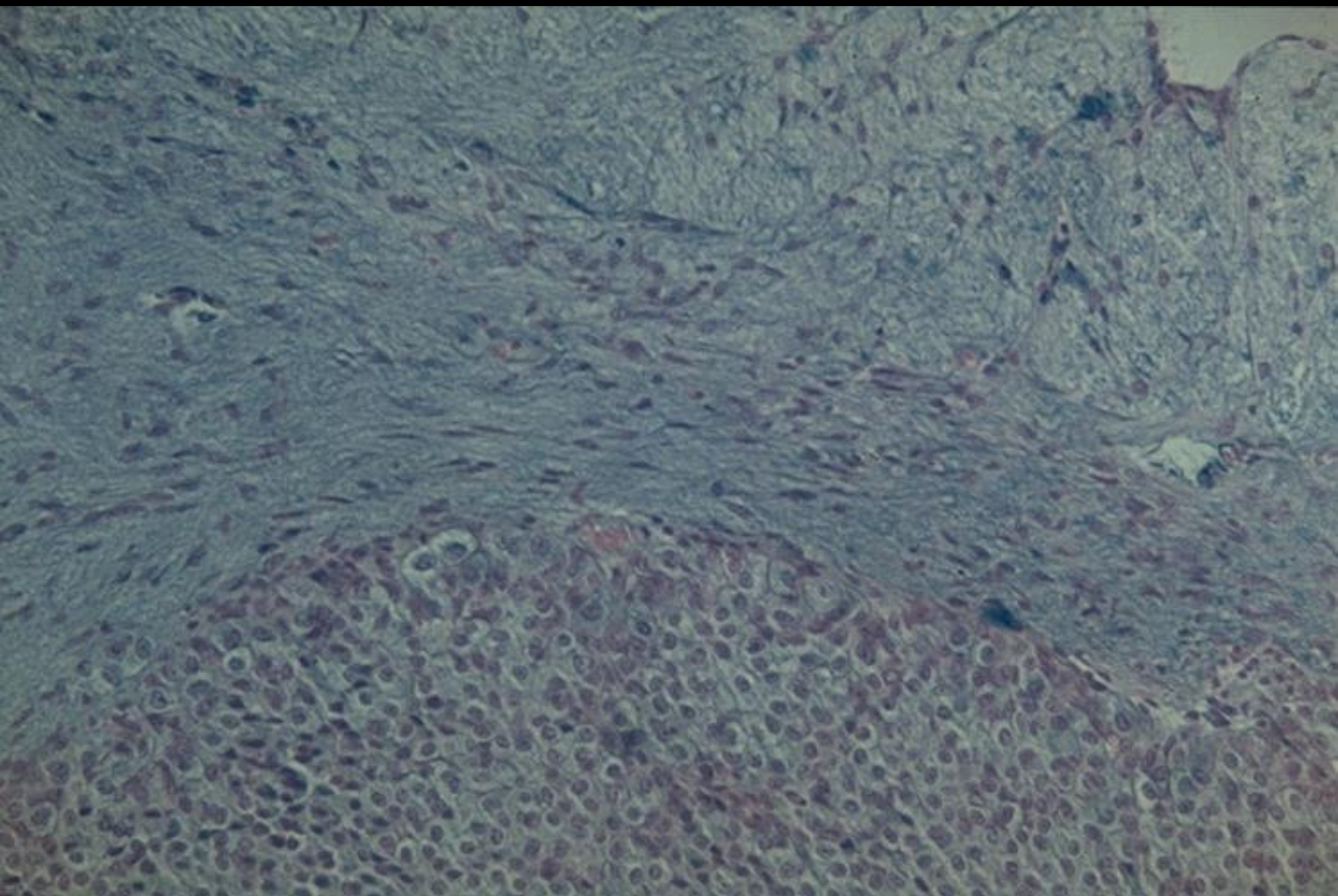
Adenohypophysis



Lobus intermedius







Neurohypophysis

Herring testek

pituicyták

