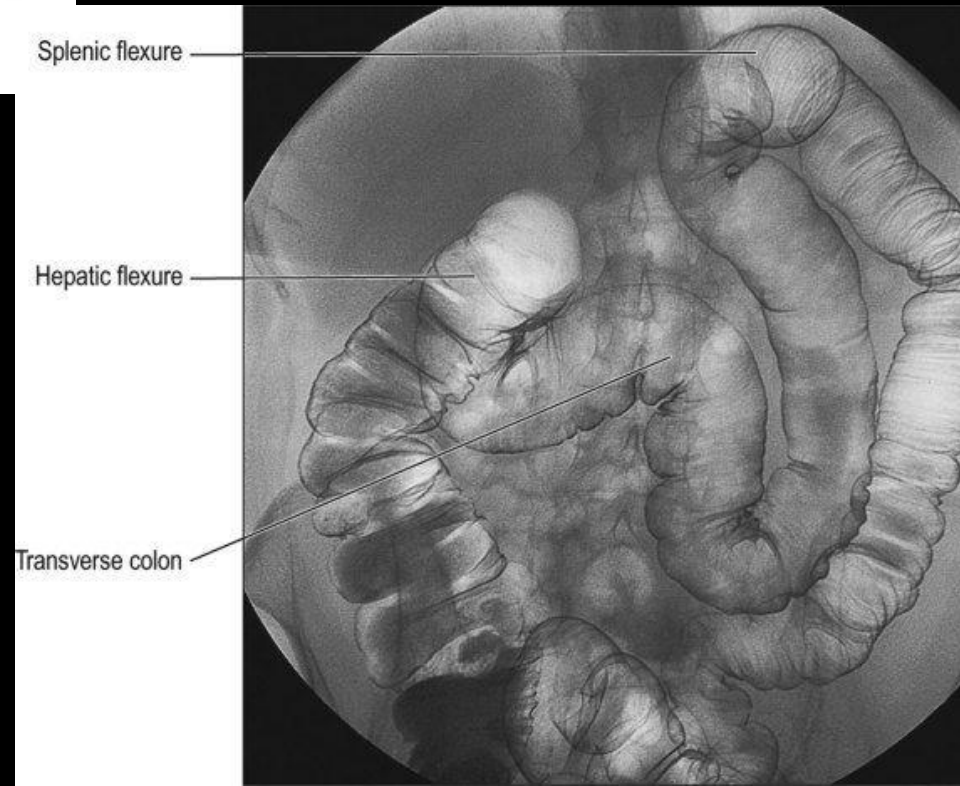
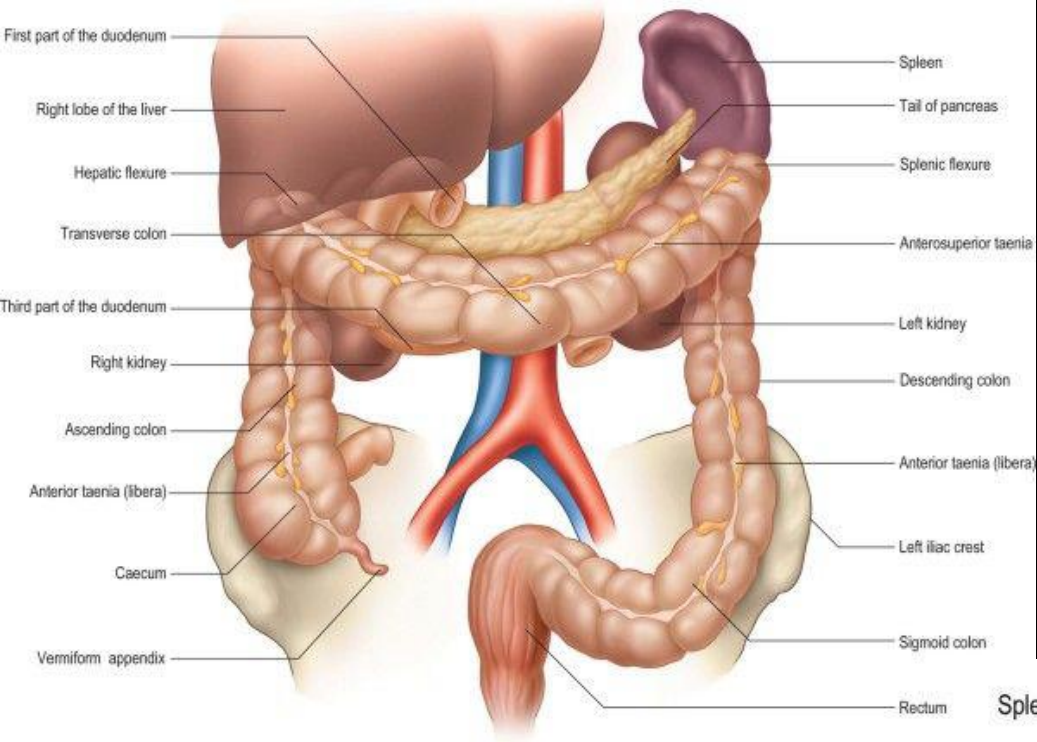
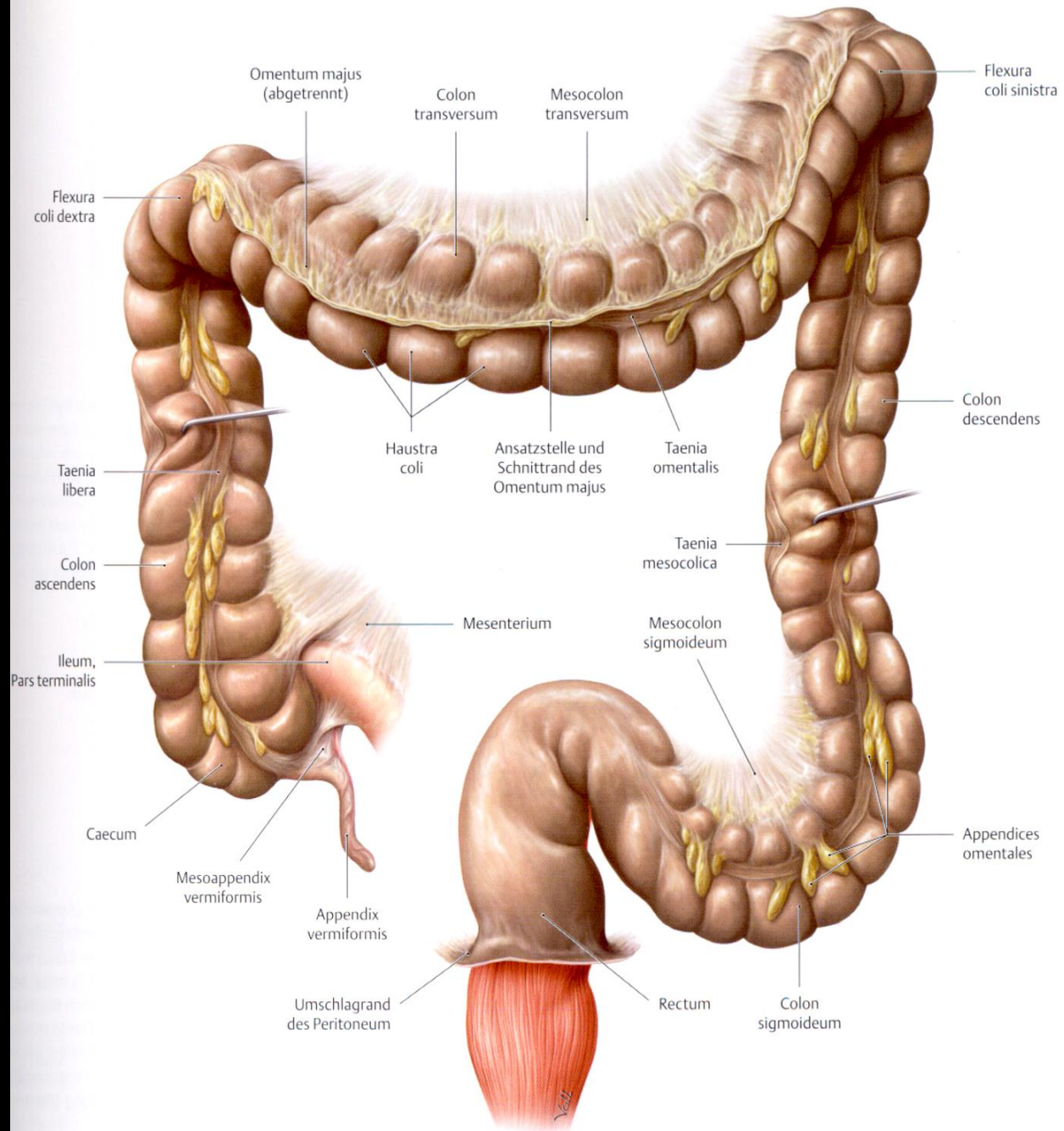
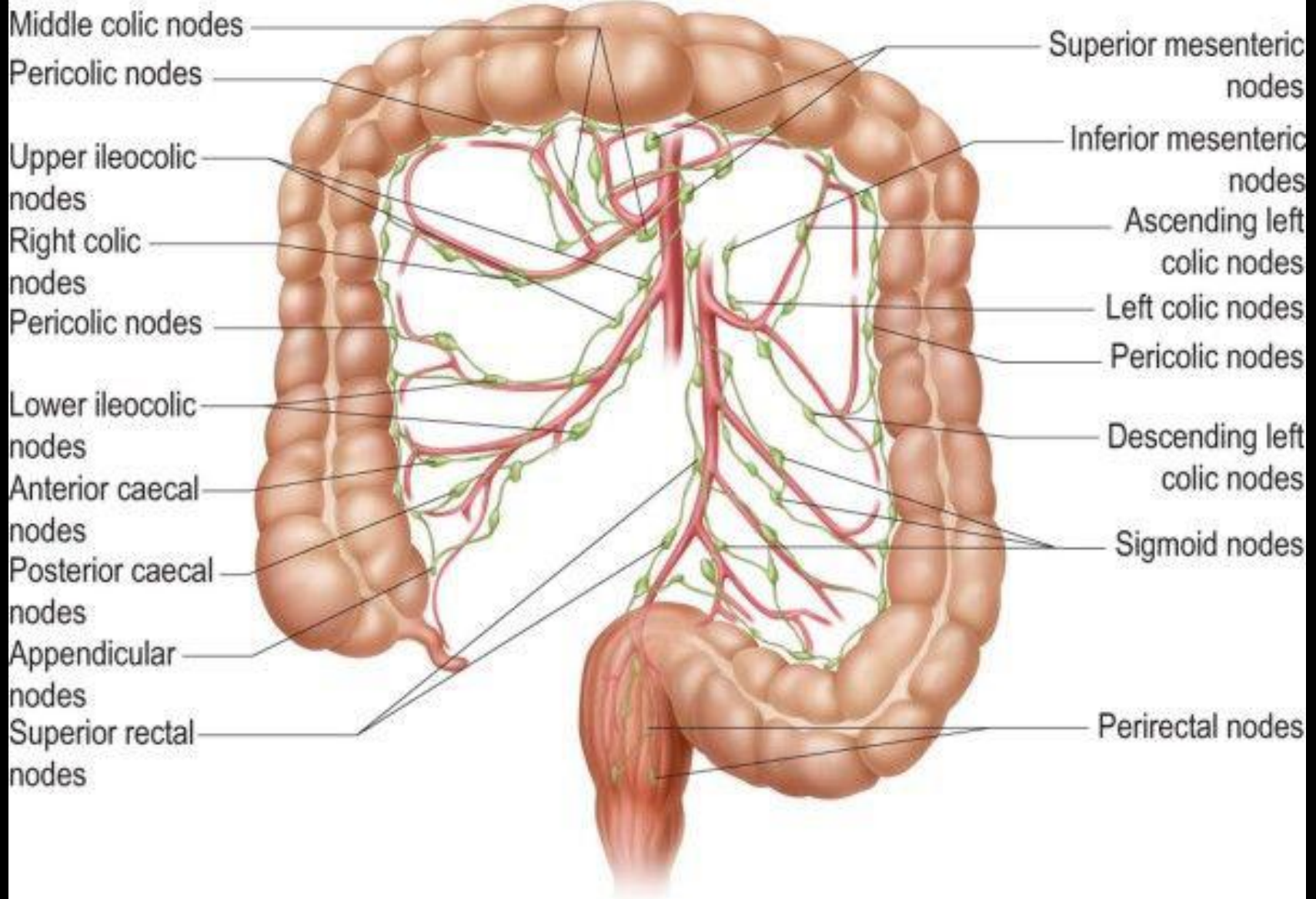


A VASTAGBÉL ÉS VÉGBÉL ANATÓMIÁJA ÉS SZÖVETTANA

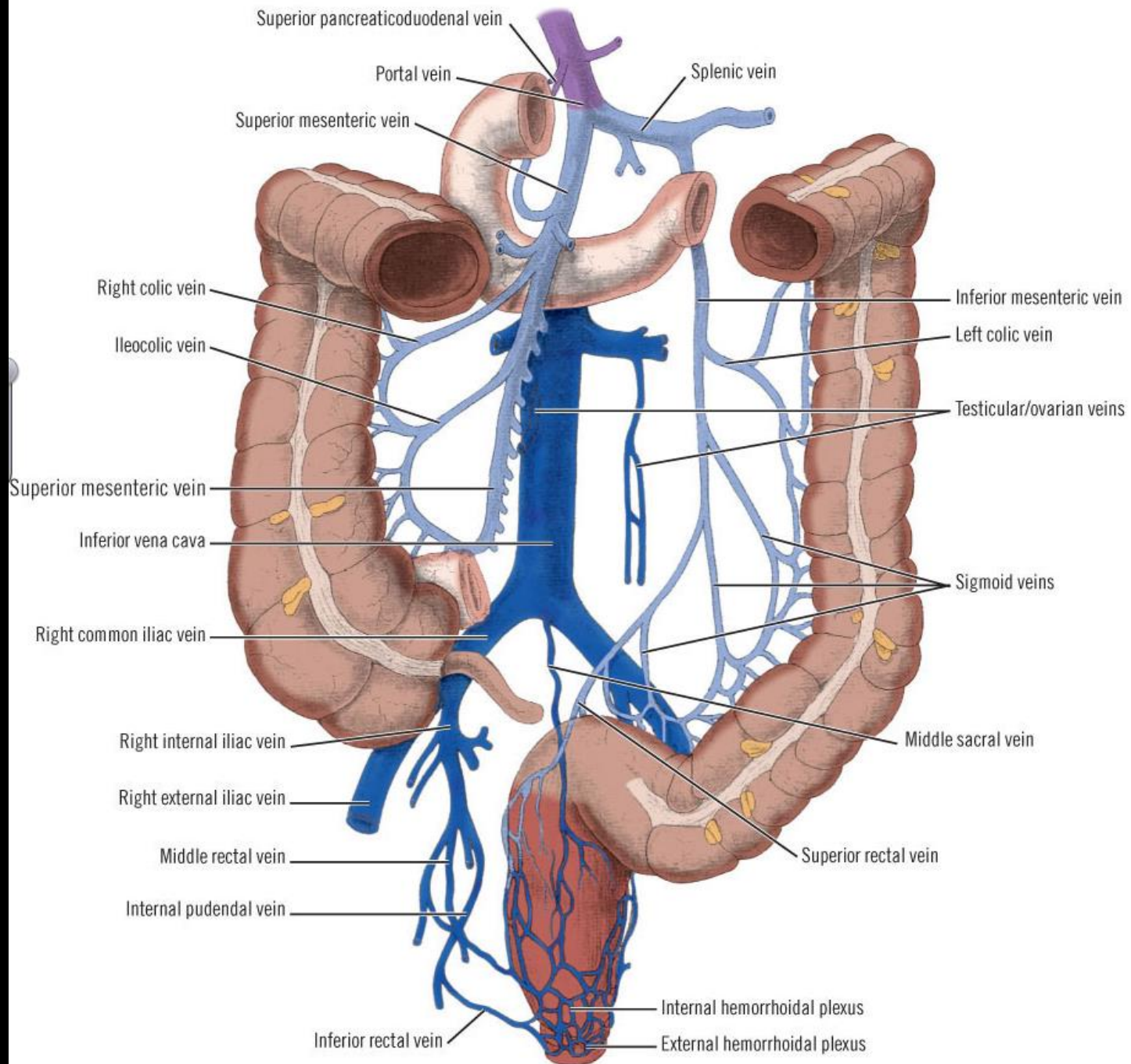


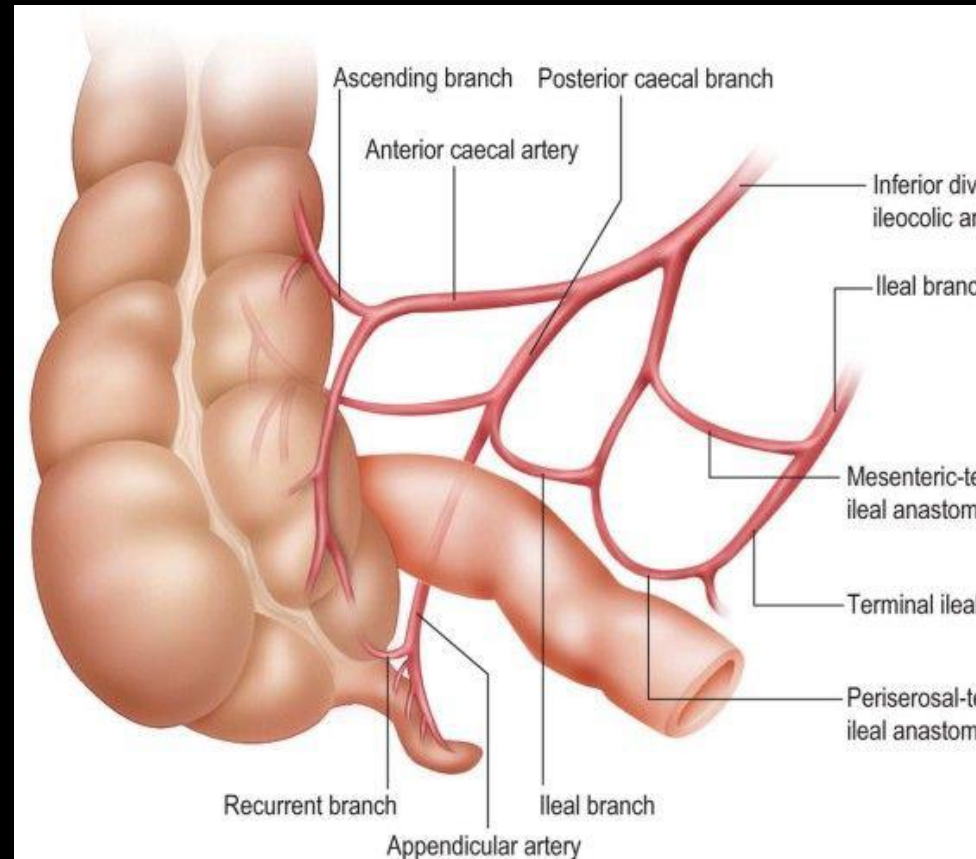
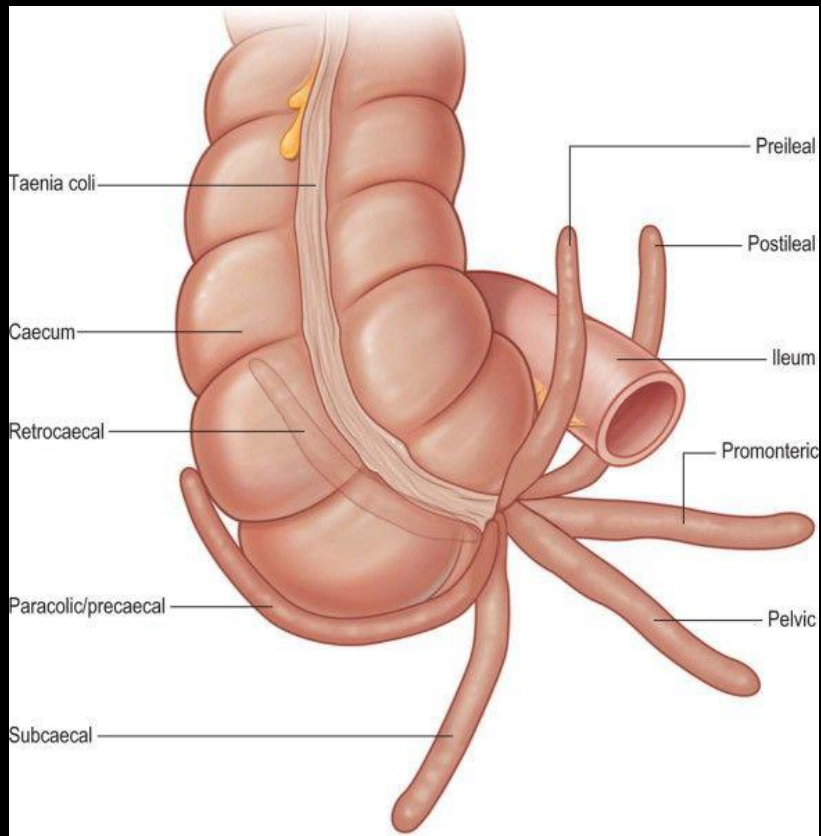


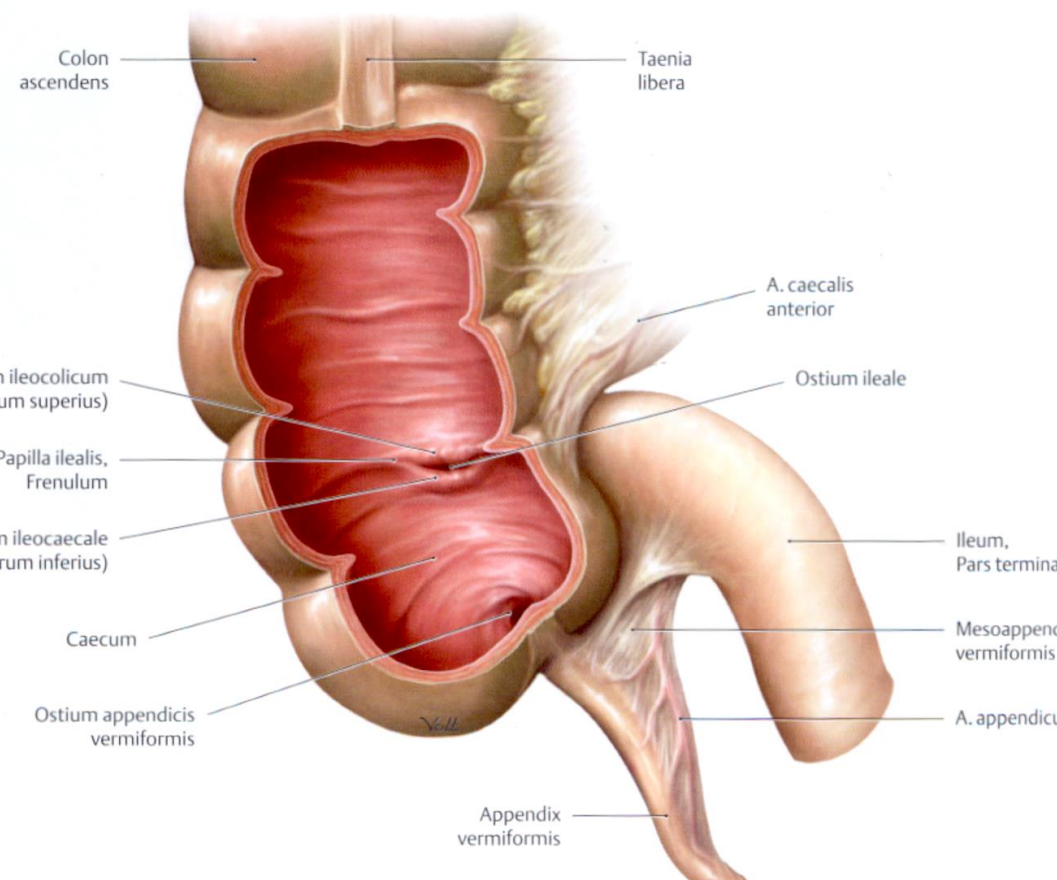
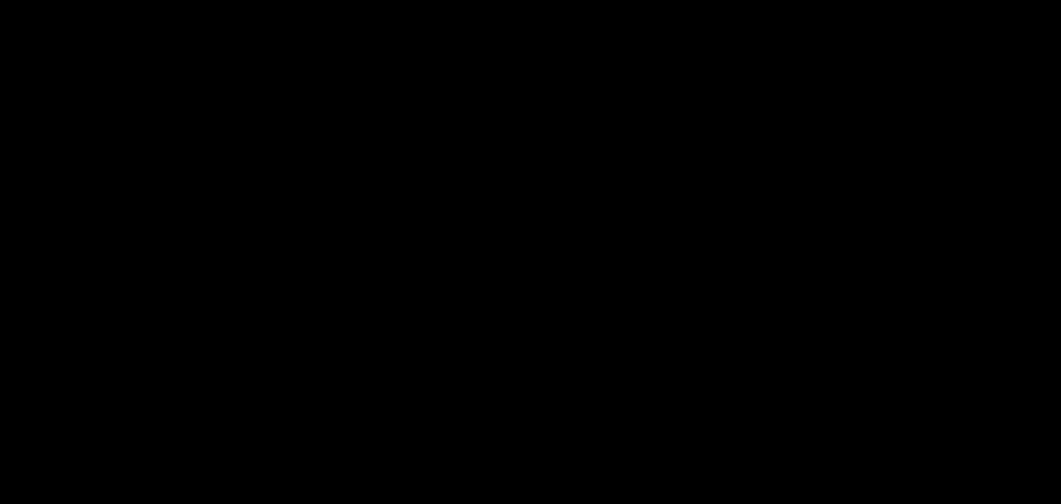
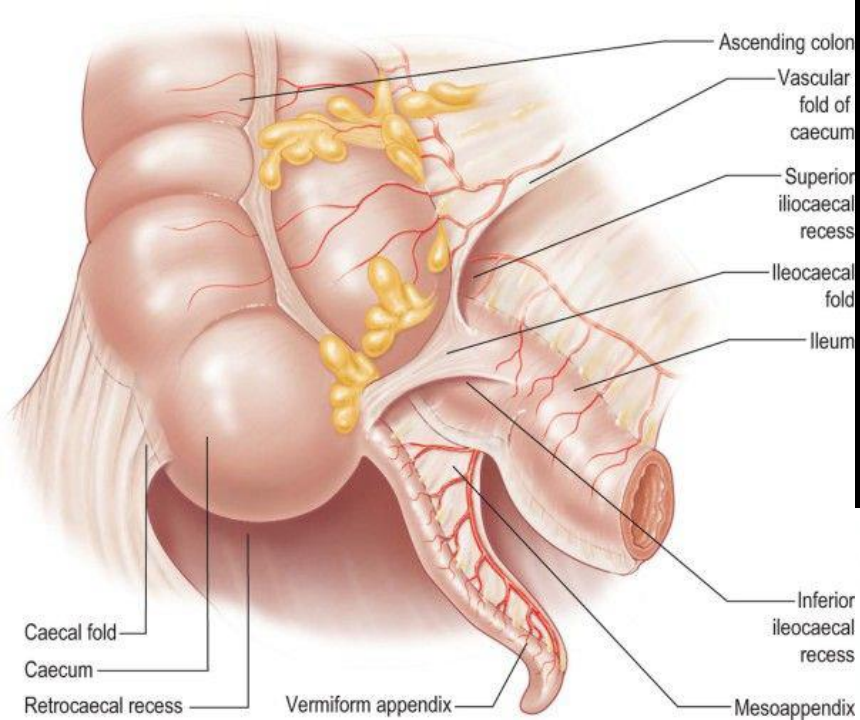


Middle colic nodes
 Pericolic nodes
 Upper ileocolic nodes
 Right colic nodes
 Pericolic nodes
 Lower ileocolic nodes
 Anterior caecal nodes
 Posterior caecal nodes
 Appendicular nodes
 Superior rectal nodes

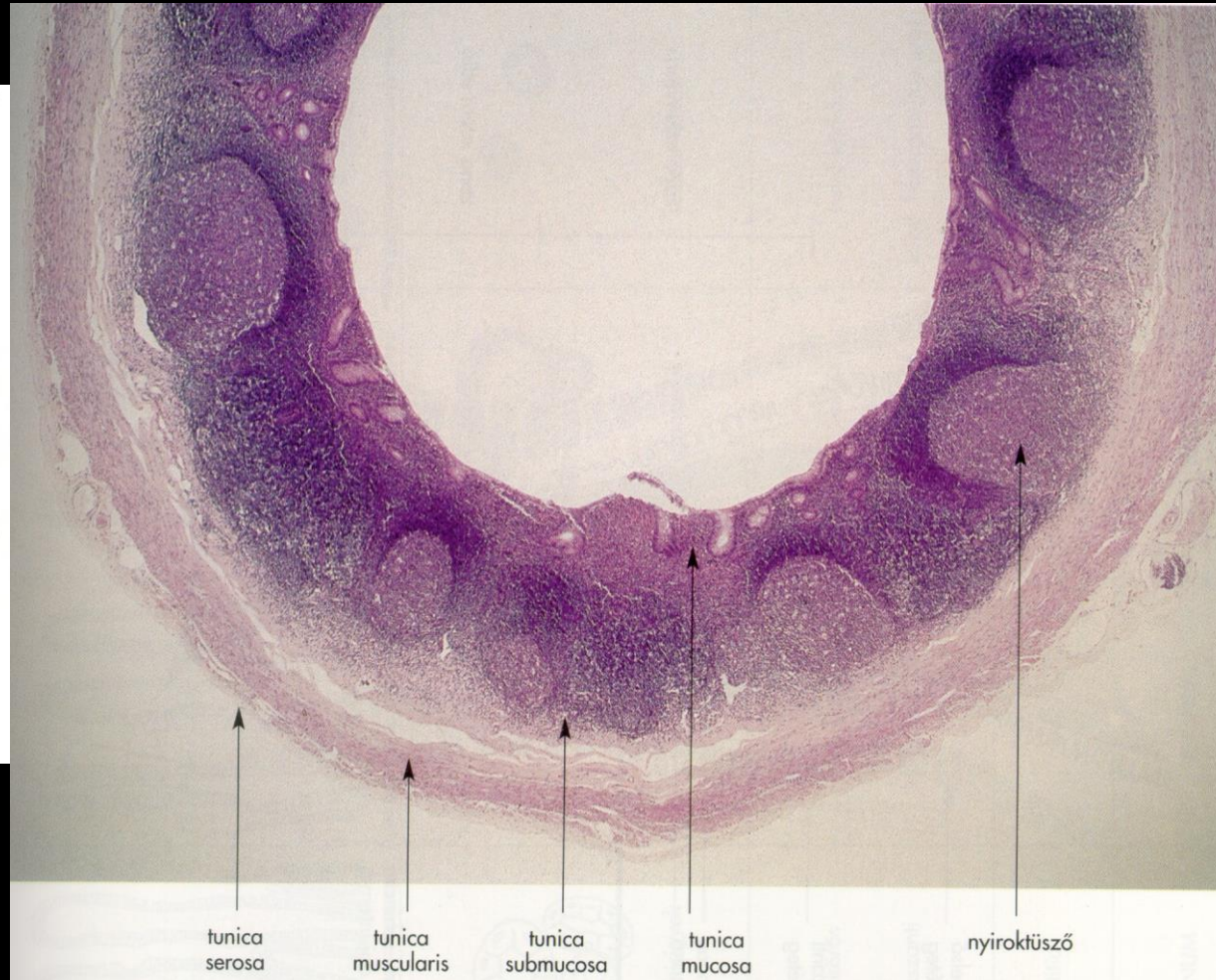
Superior mesenteric nodes
 Inferior mesenteric nodes
 Ascending left colic nodes
 Left colic nodes
 Pericolic nodes
 Descending left colic nodes
 Sigmoid nodes
 Perirectal nodes



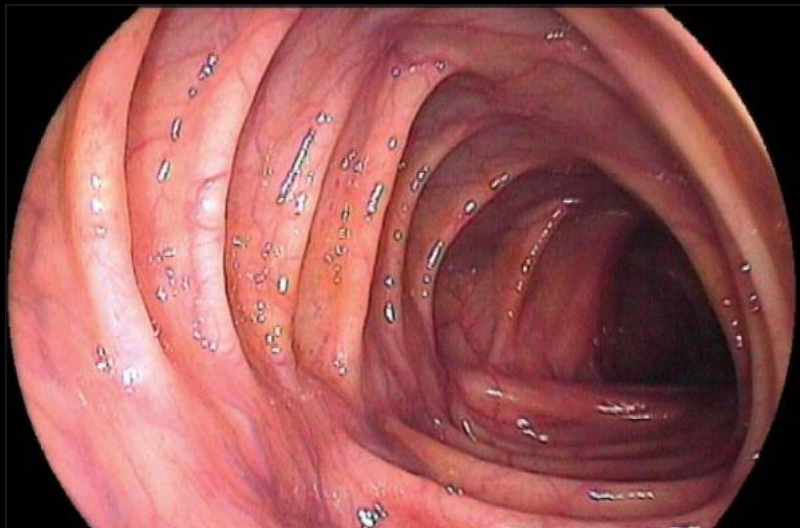
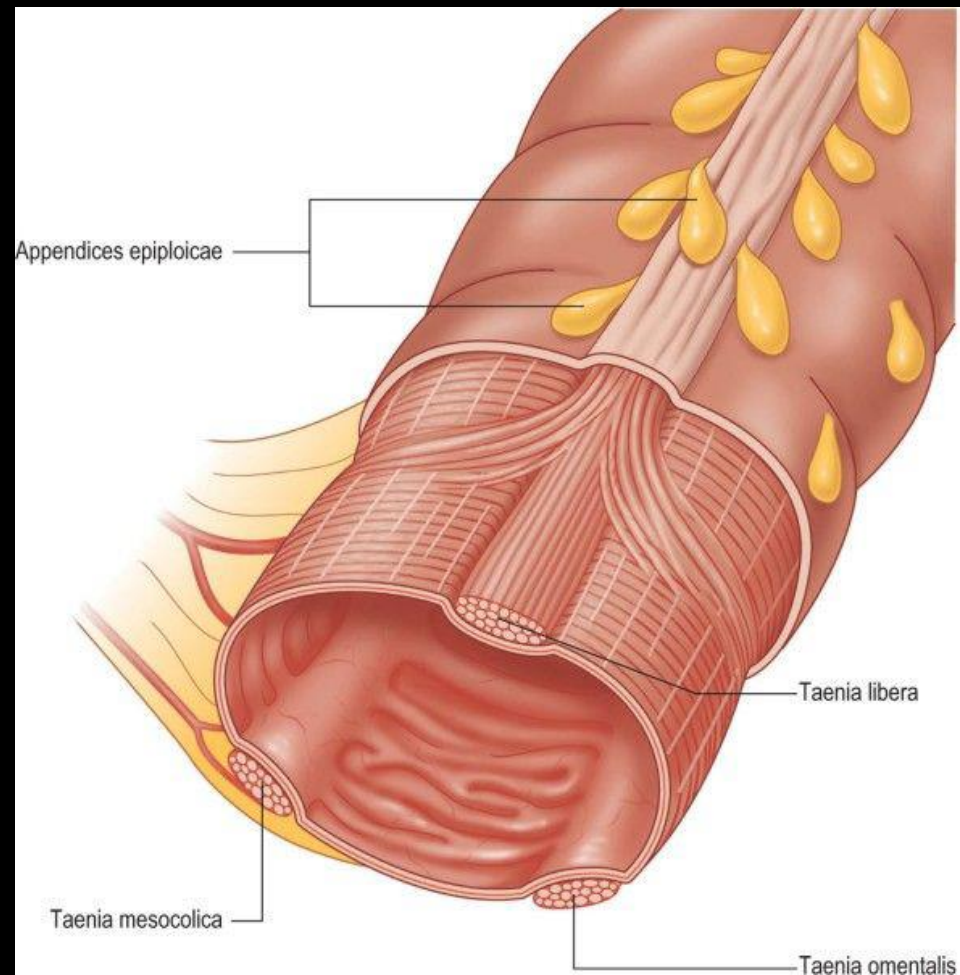
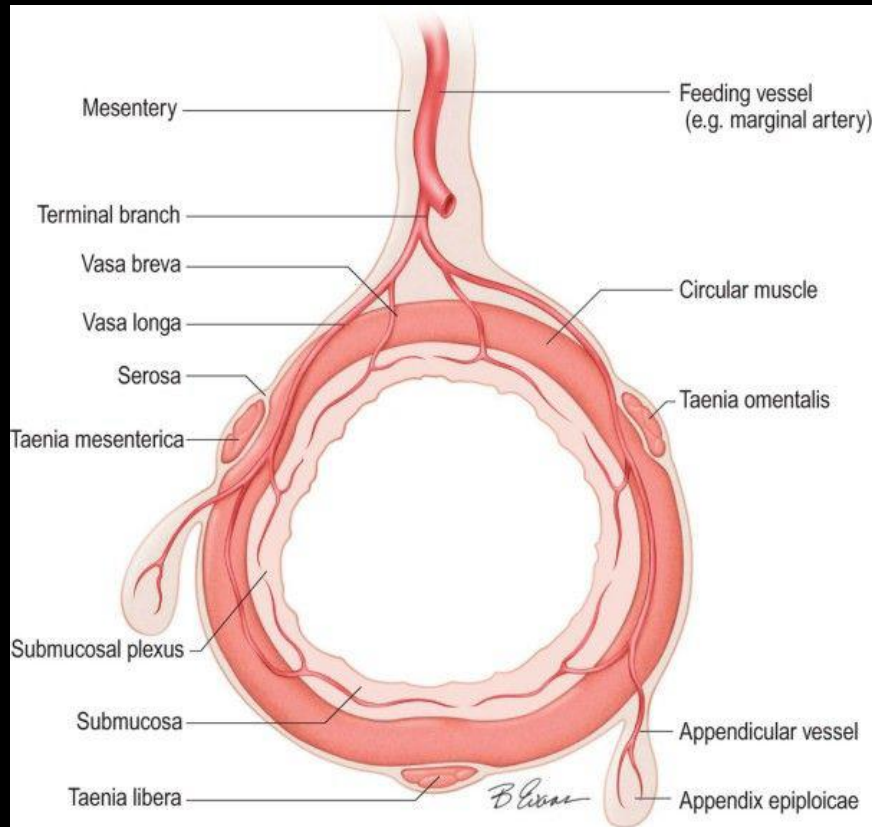


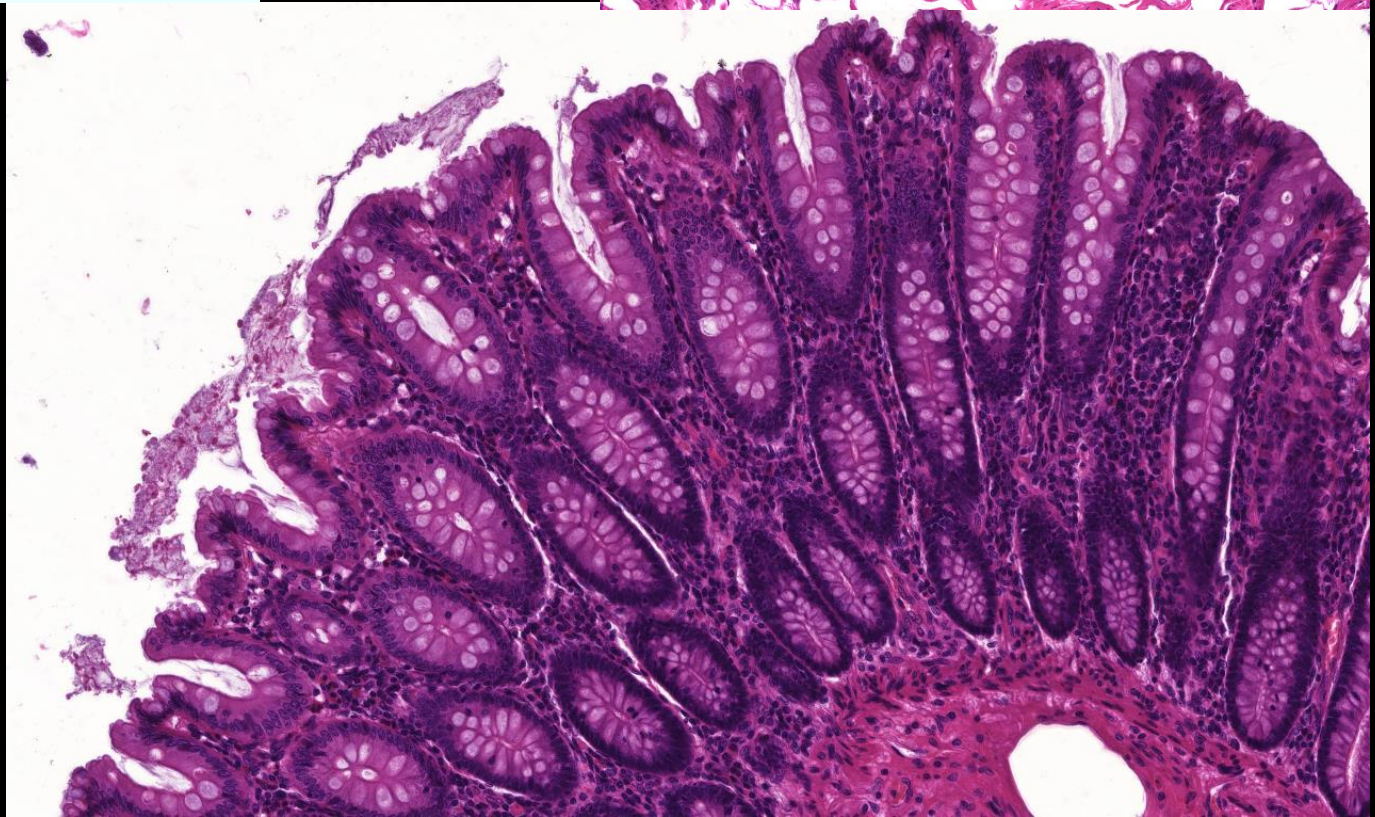
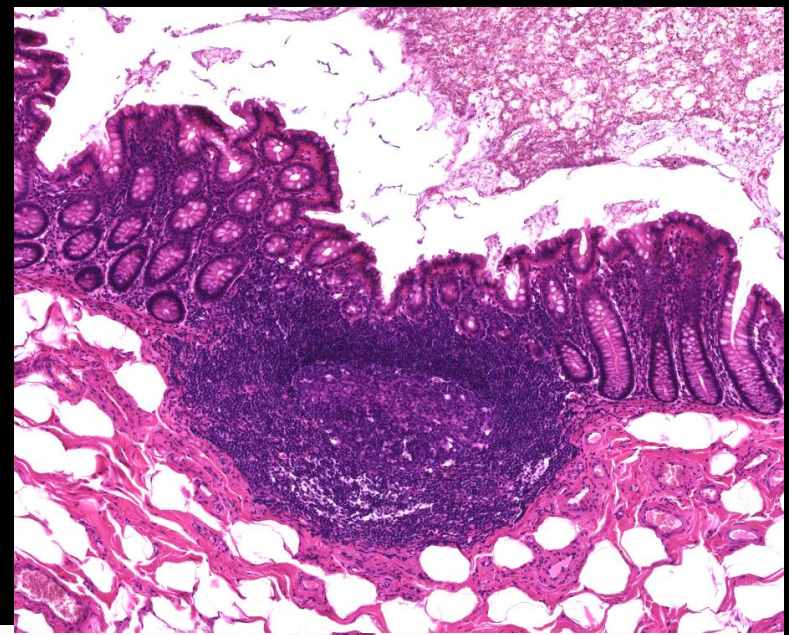
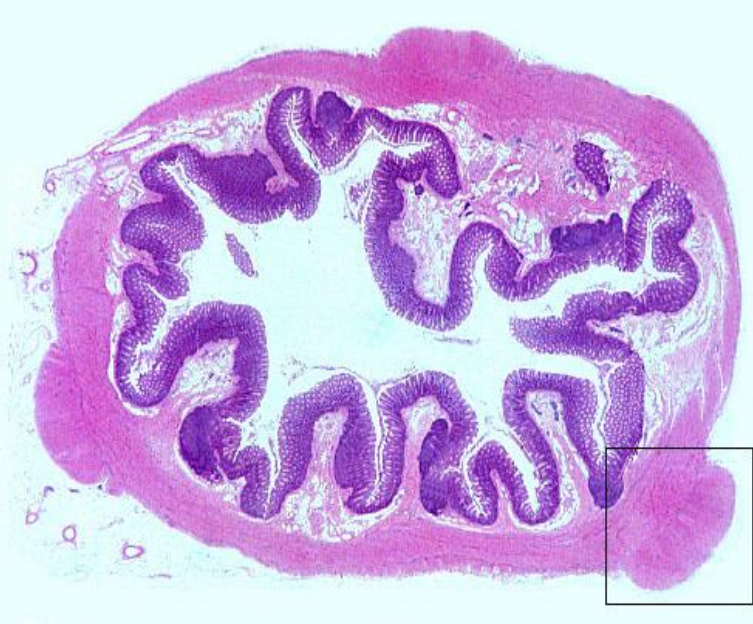


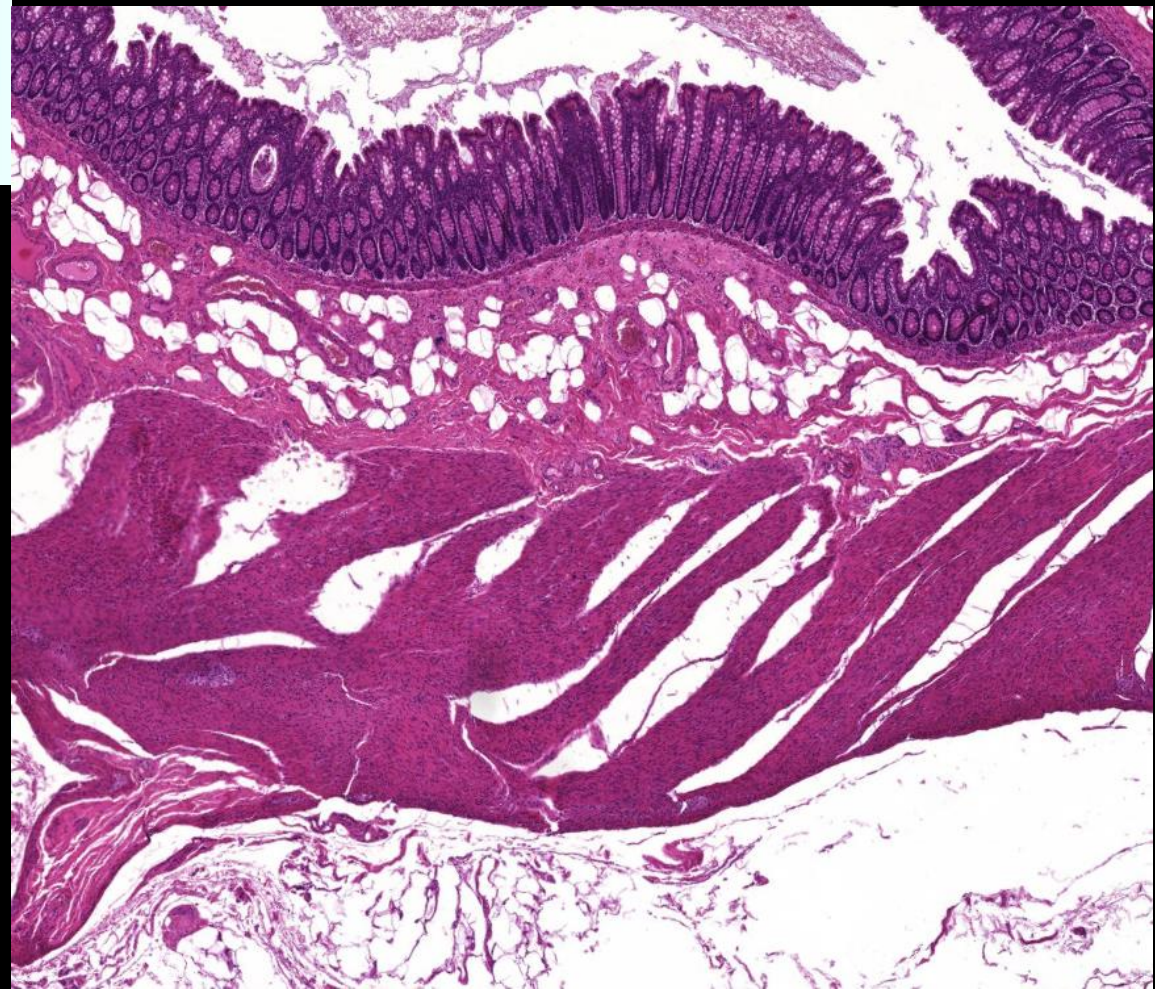
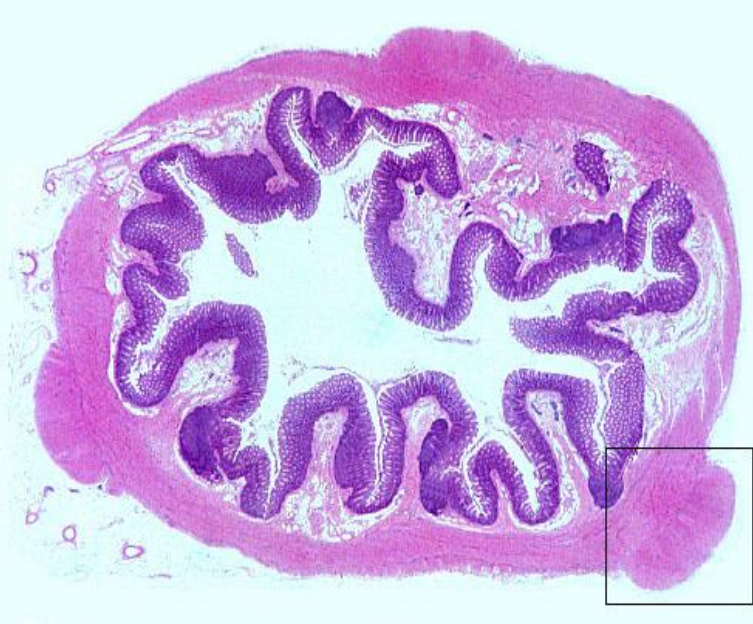
Féregnyúlvány (appendix vermiformis)



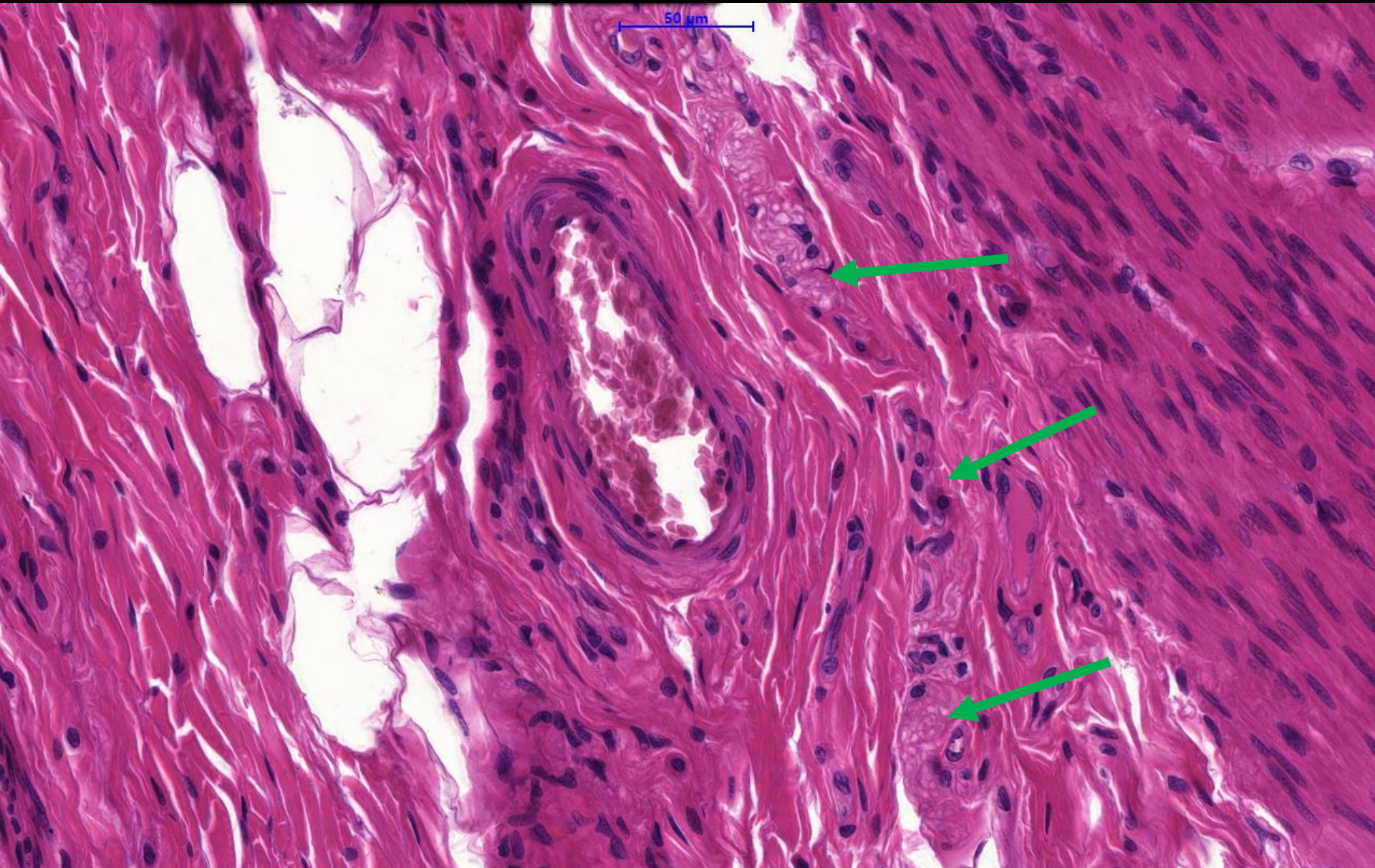
Colon (remesebél)



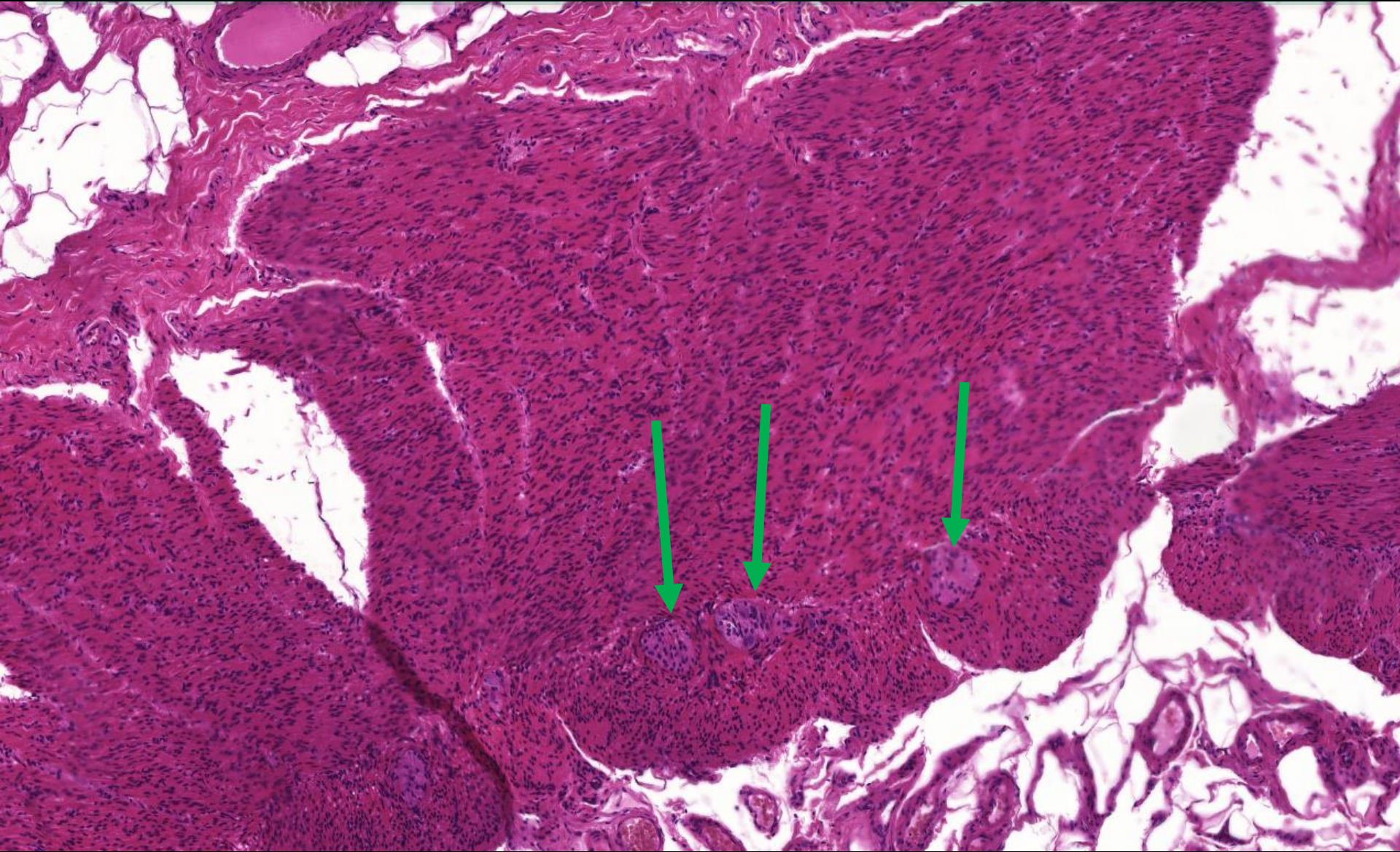


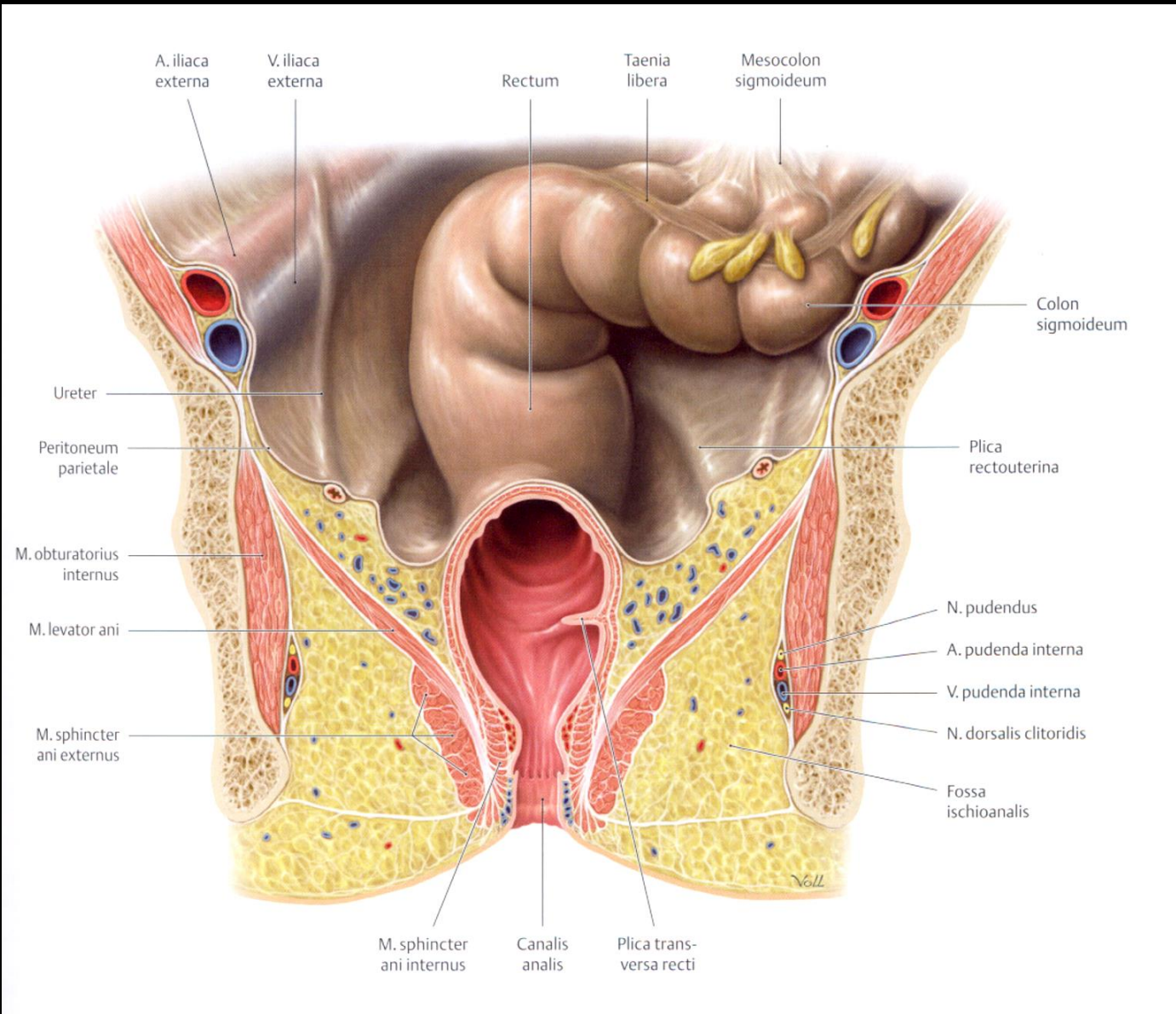


Plexus submucosus Meissneri

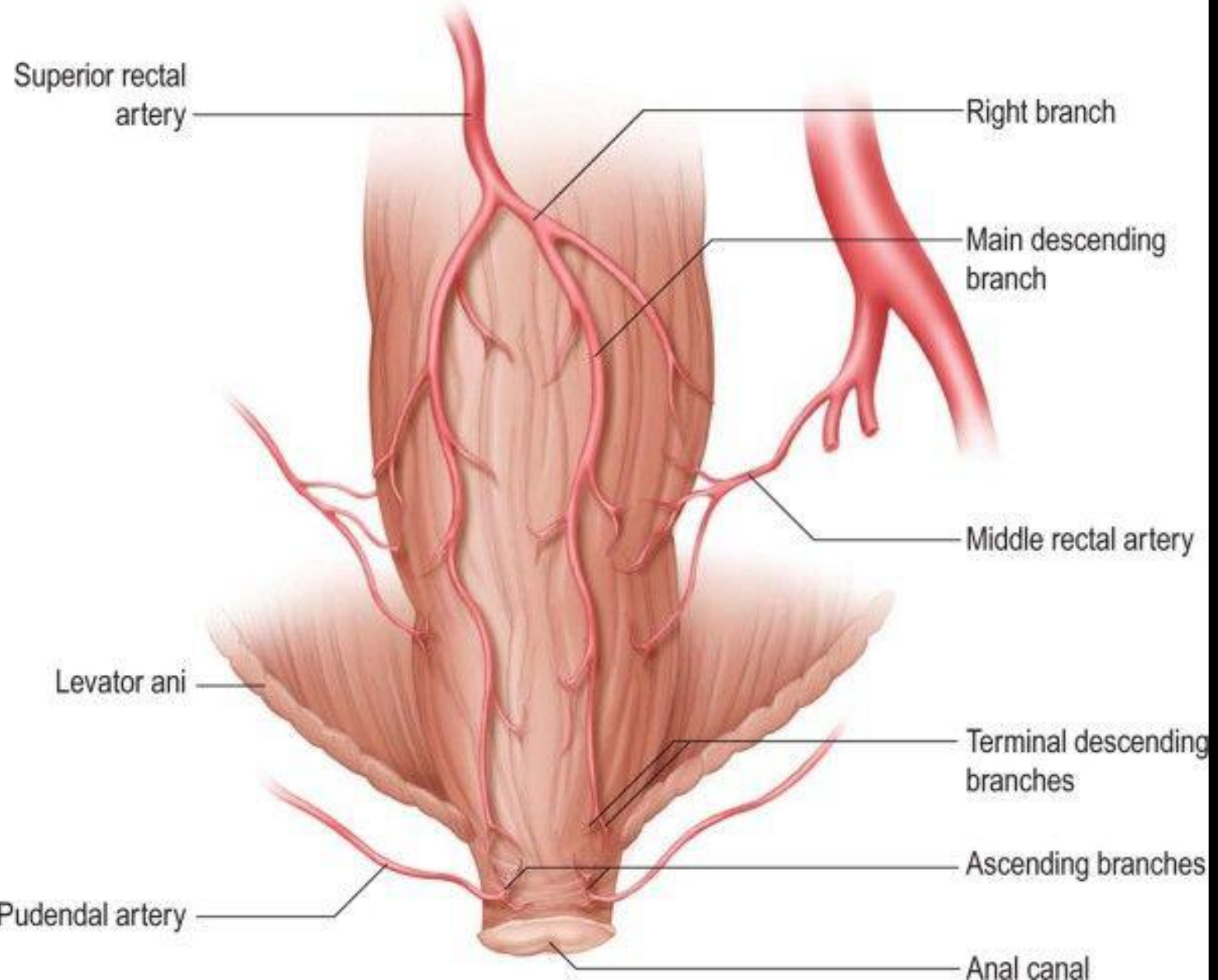


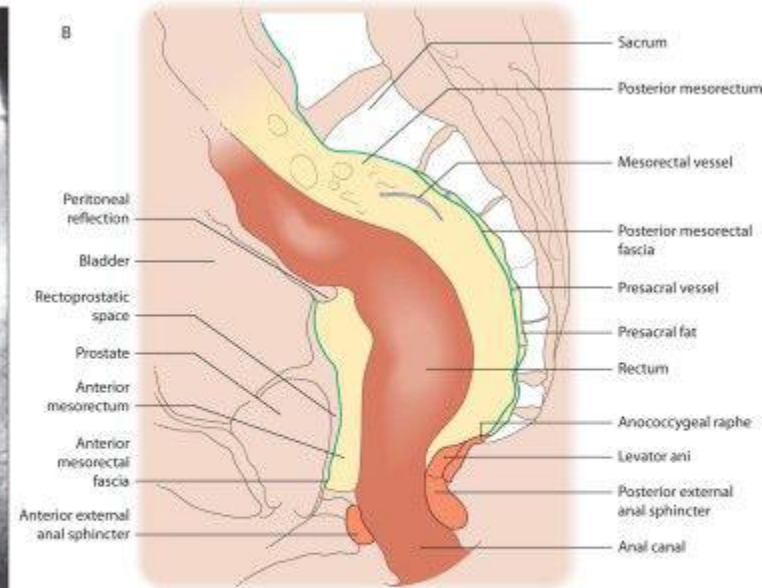
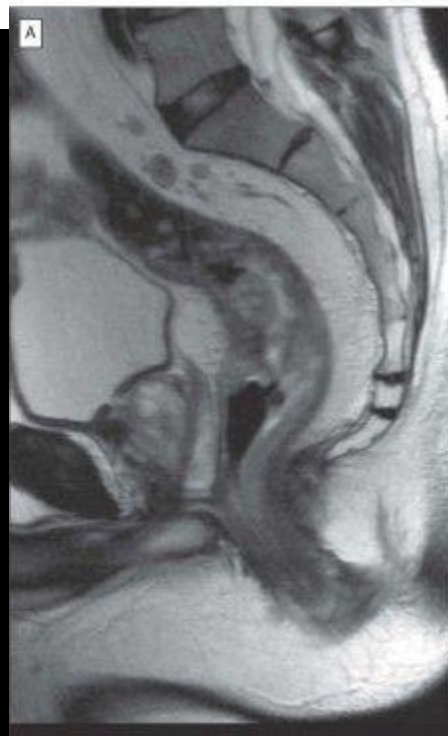
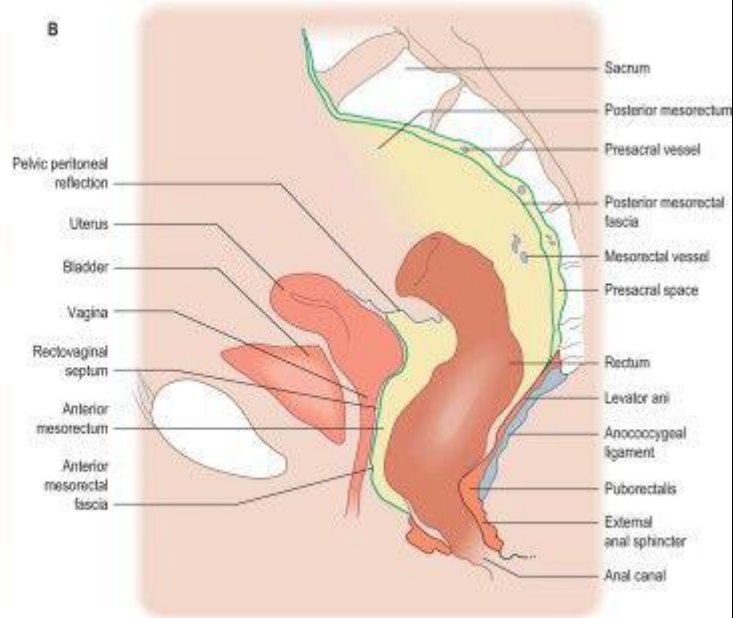
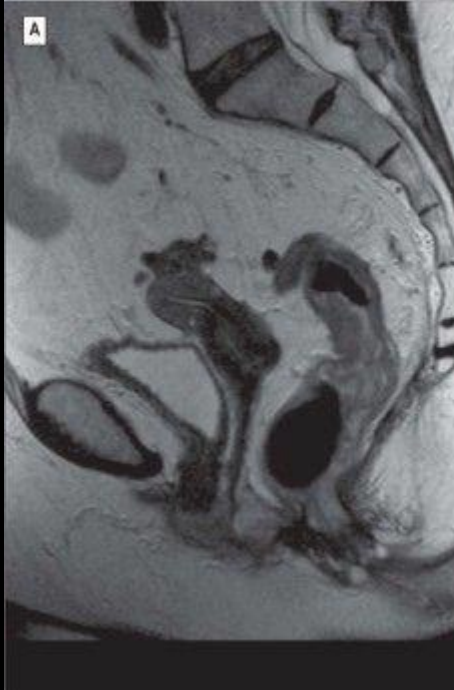
Plexus myentericus Auerbachii

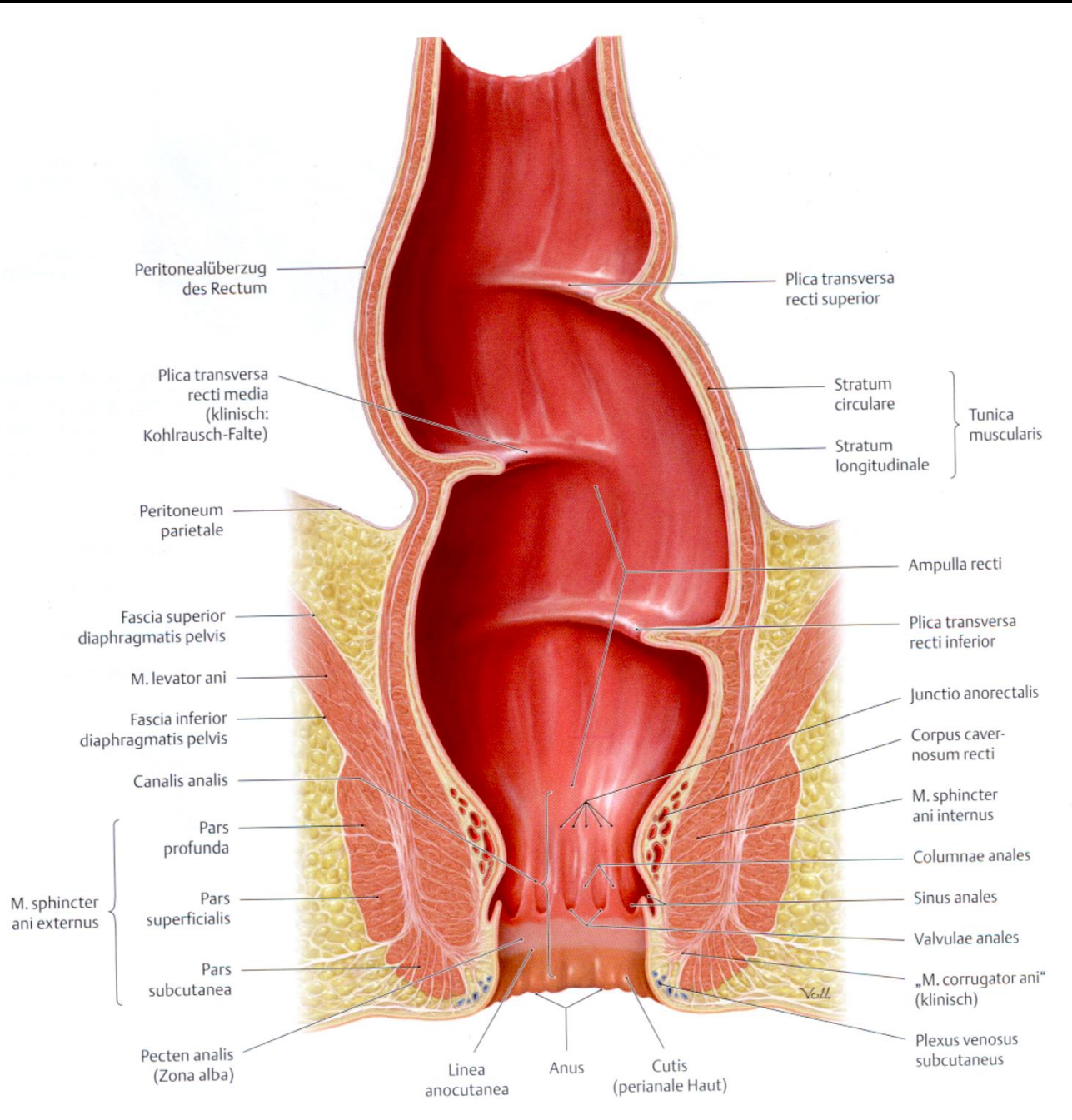


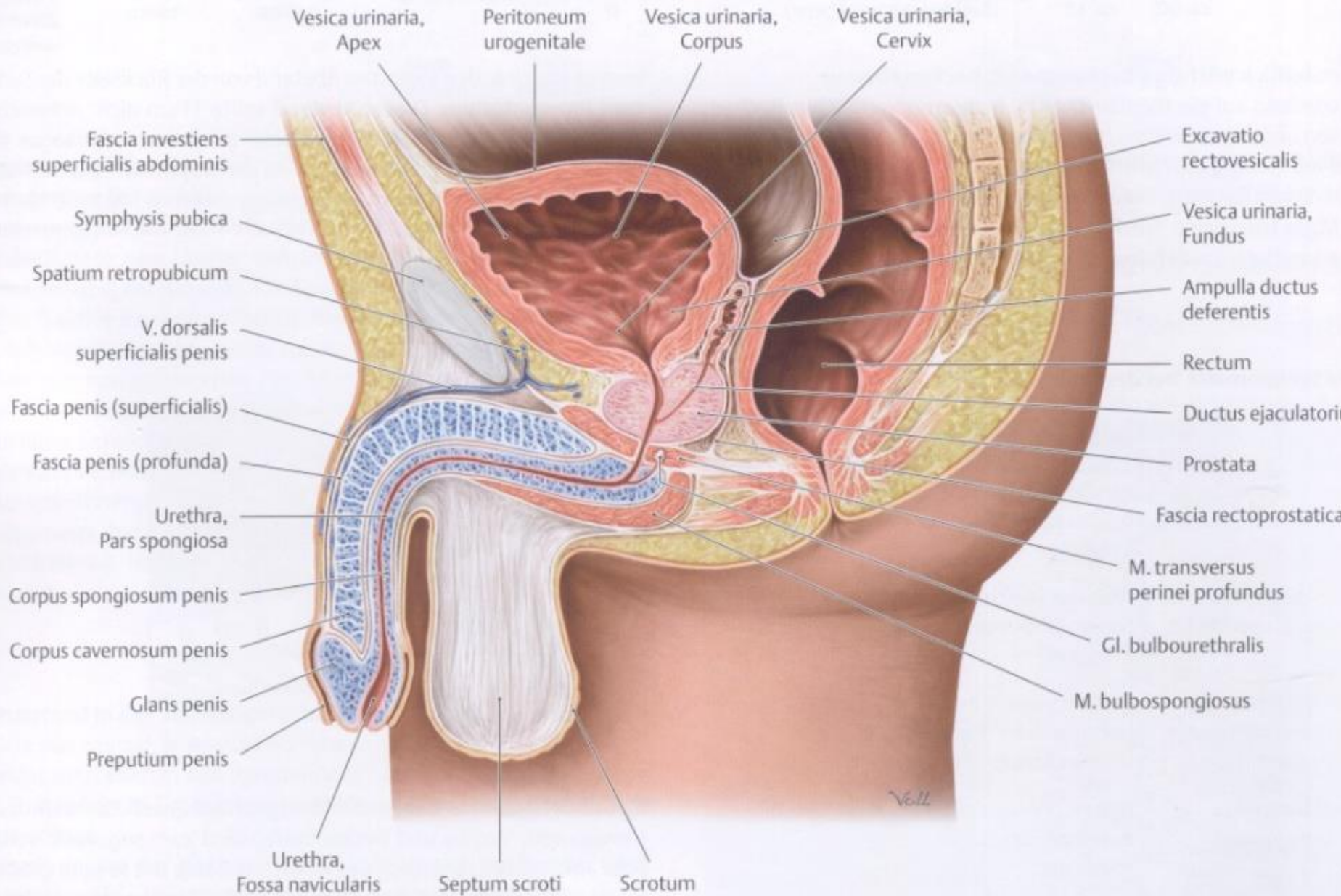


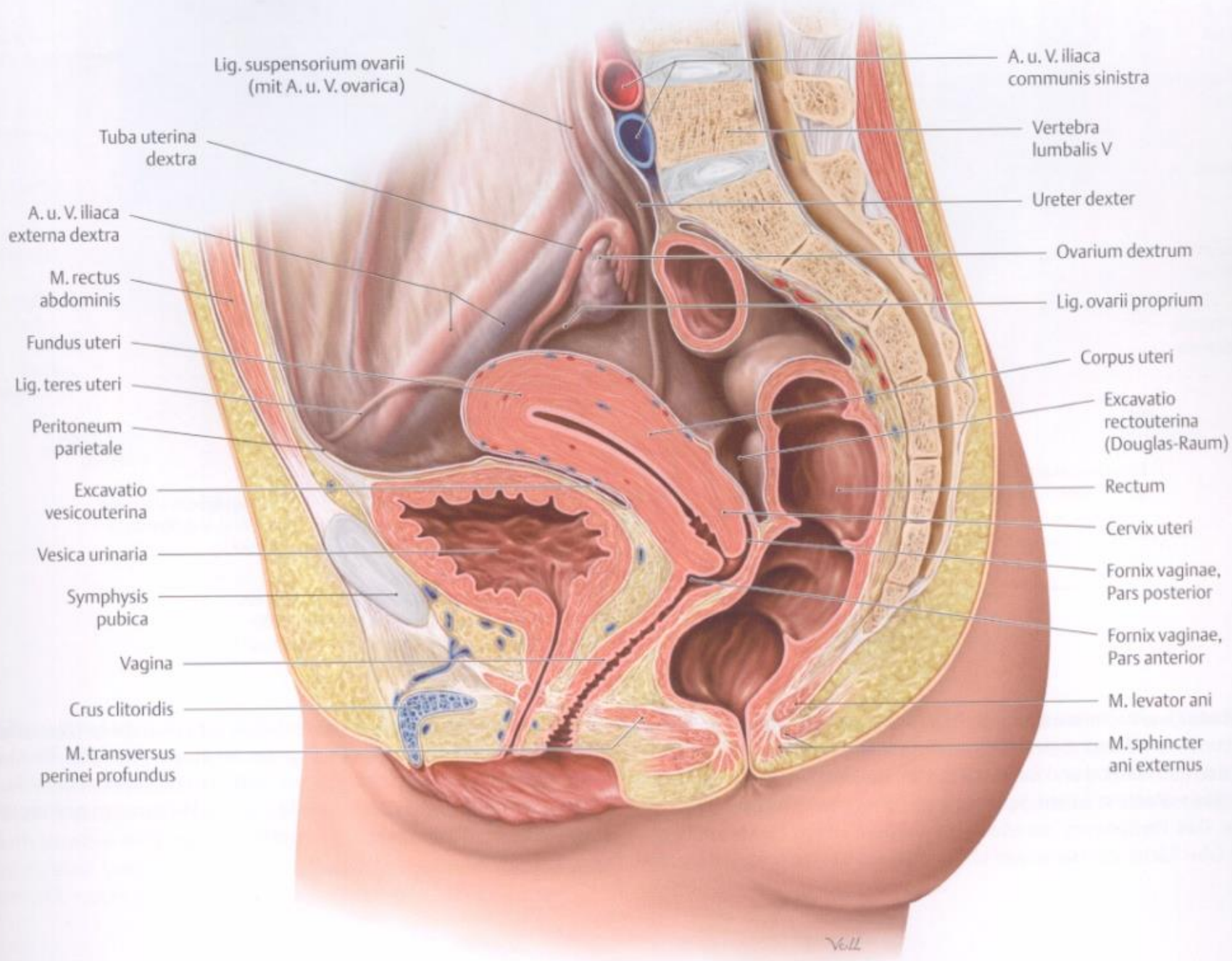
Posterior aspect of rectum











Lig. suspensorium ovarii
(mit A. u. V. ovarica)

Tuba uterina
dextra

A. u. V. iliaca
externa dextra

M. rectus
abdominis

Fundus uteri

Lig. teres uteri

Peritoneum
parietale

Excavatio
vesicouterina

Vesica urinaria

Symphysis
pubica

Vagina

Crus clitoridis

M. transversus
perinei profundus

A. u. V. iliaca
communis sinistra

Vertebra
lumbalis V

Ureter dexter

Ovarium dextrum

Lig. ovarii proprium

Corpus uteri

Excavatio
rectouterina
(Douglas-Raum)

Rectum

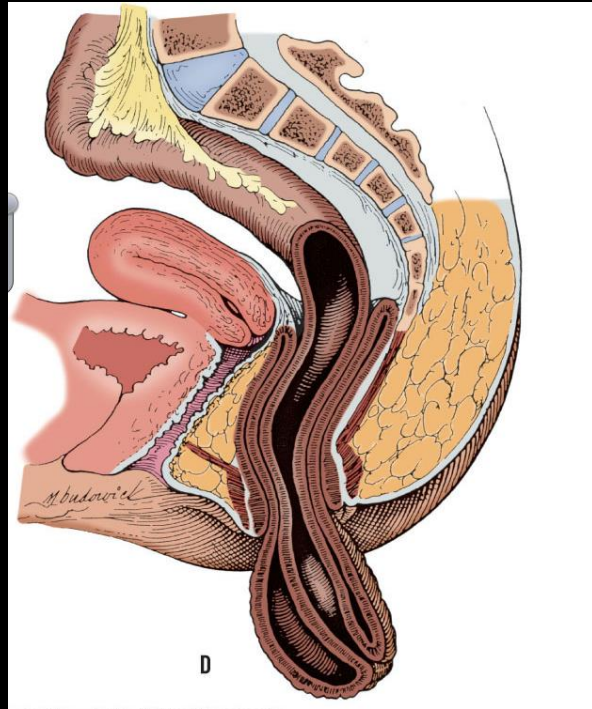
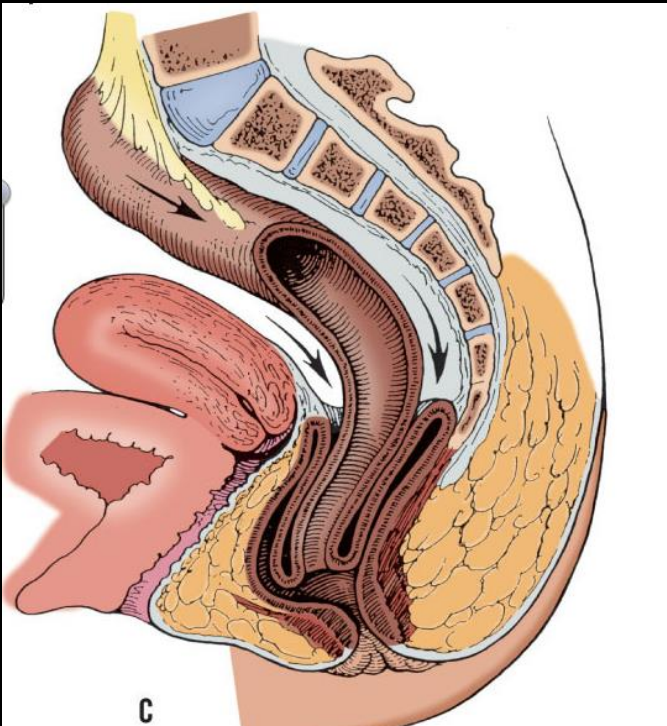
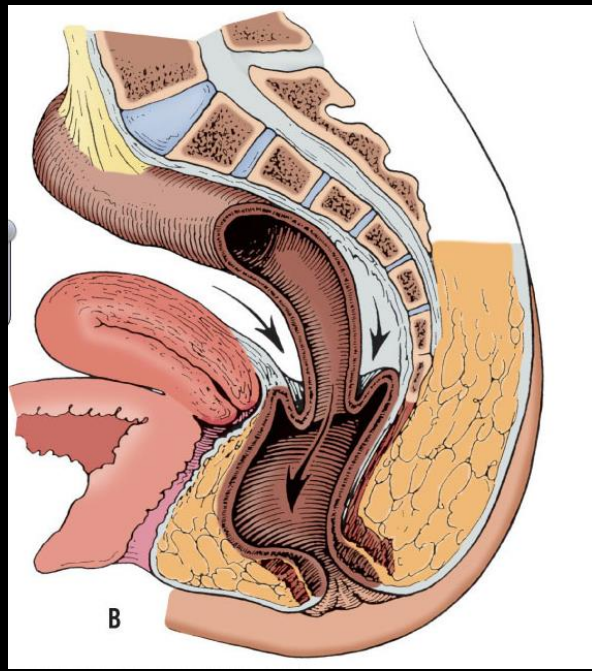
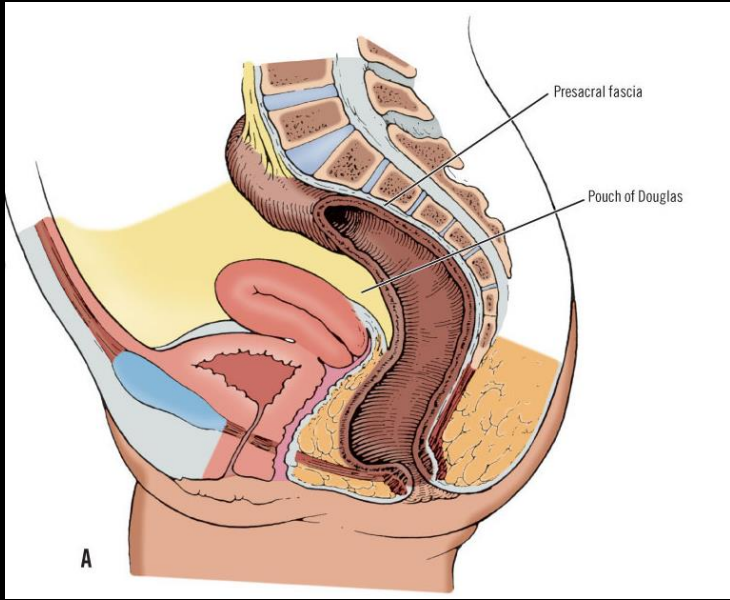
Cervix uteri

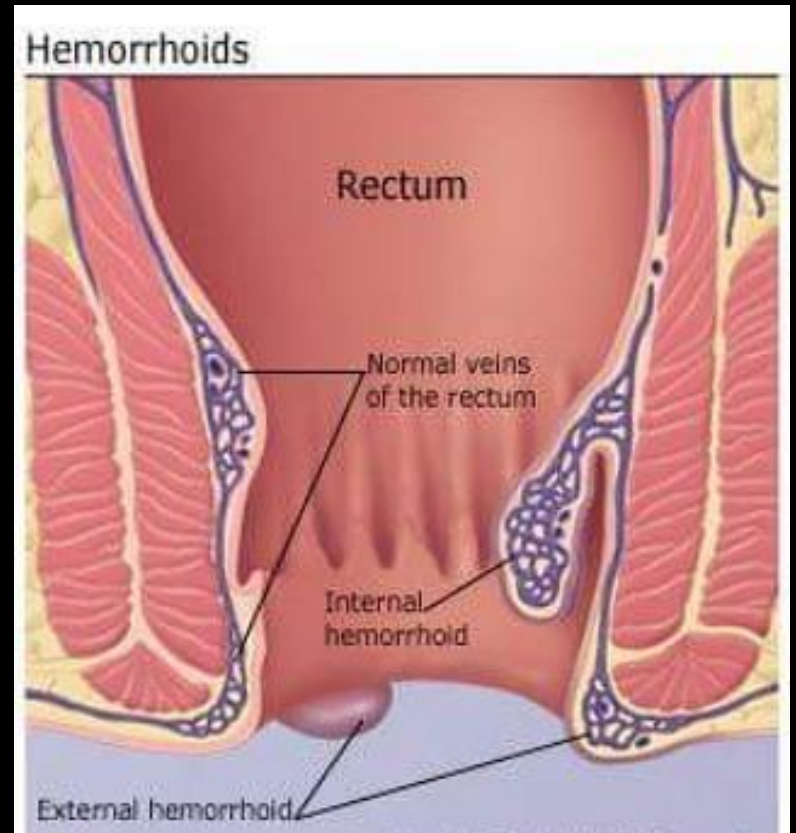
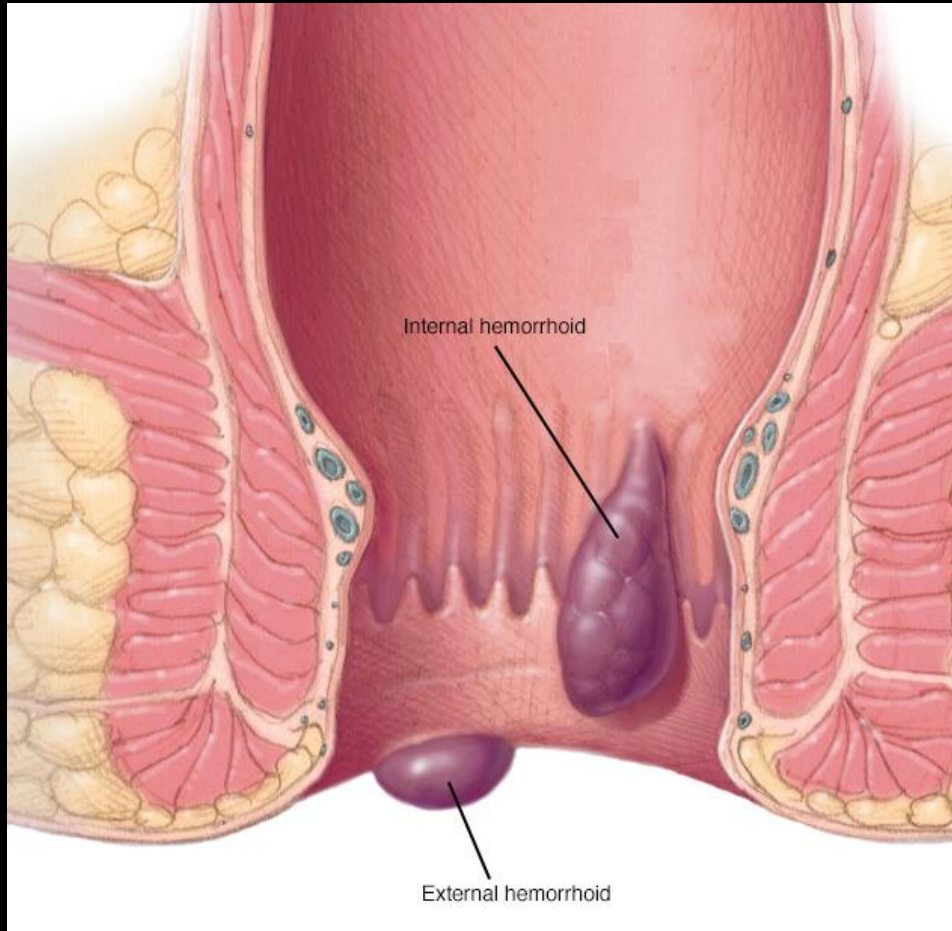
Fornix vaginae,
Pars posterior

Fornix vaginae,
Pars anterior

M. levator ani

M. sphincter
ani externus





Sipolyok és tályogok

