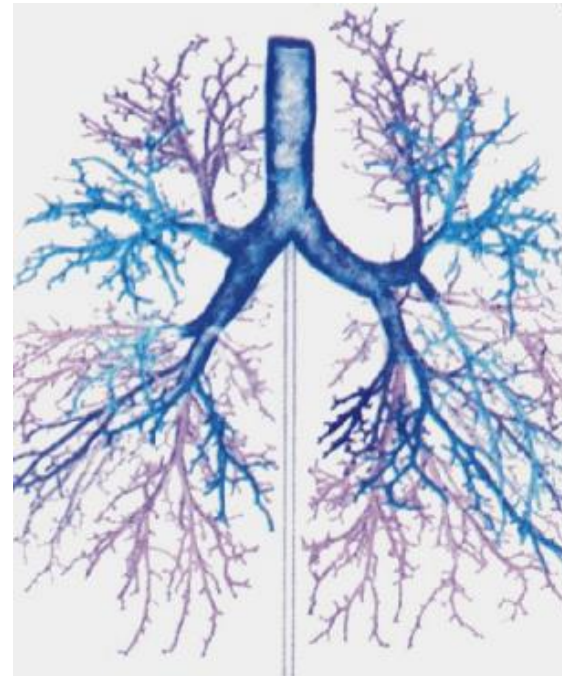


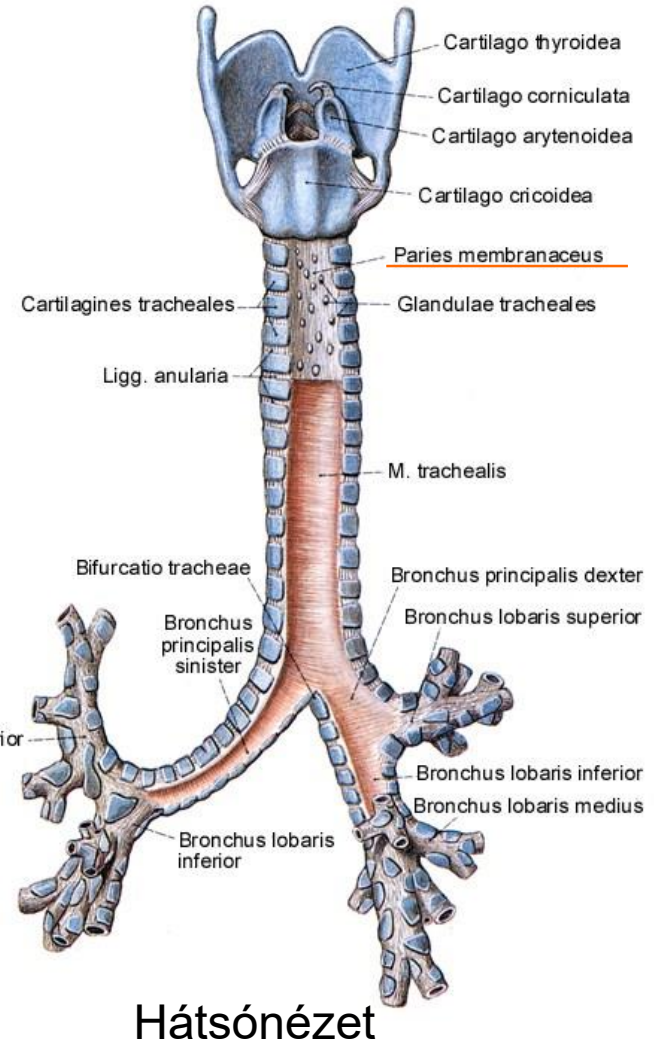
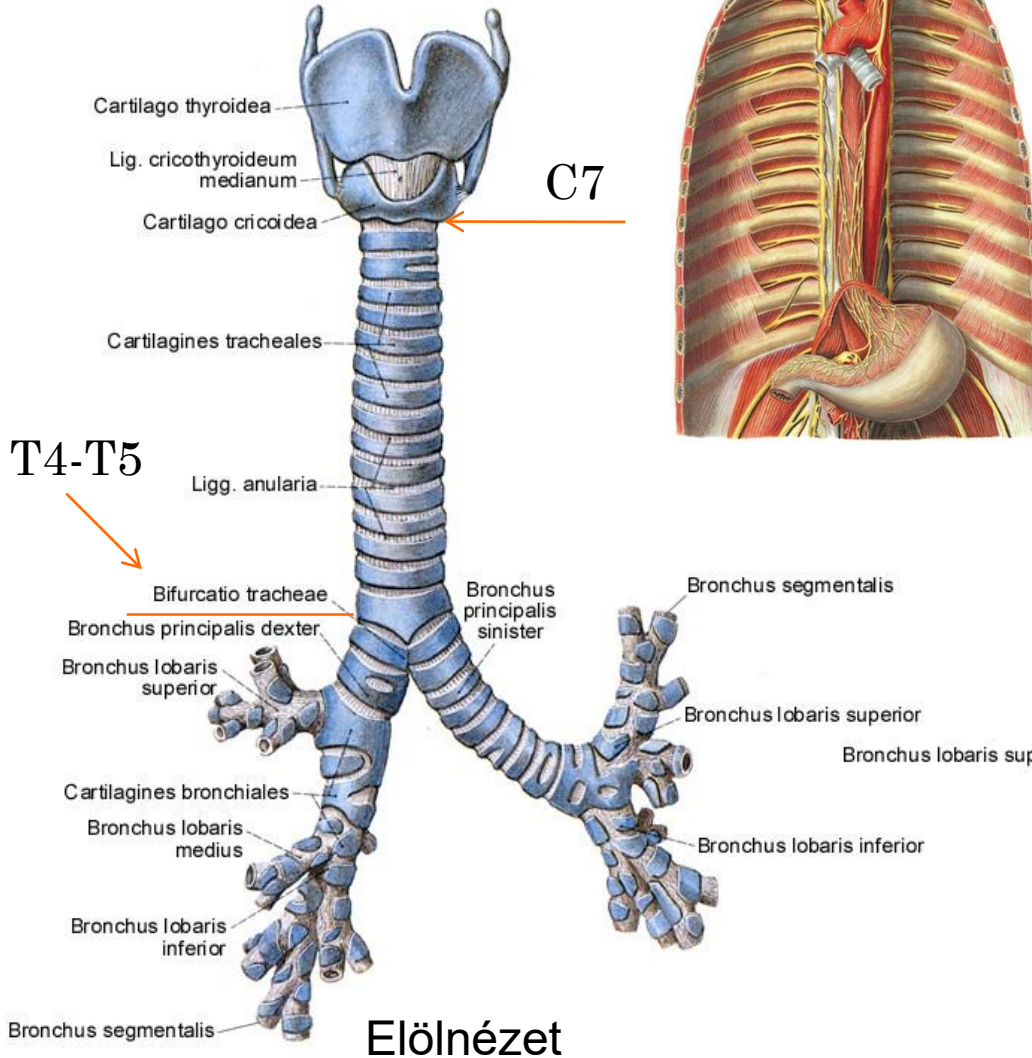
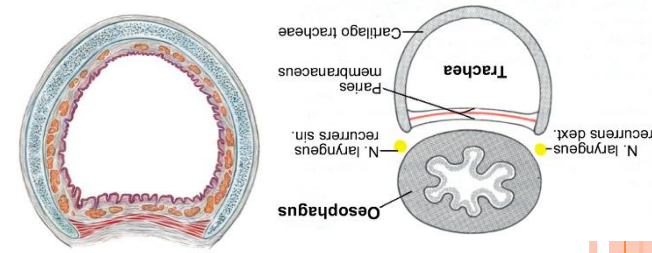
A légső és a tődő anatómiája. Pleura.

Dr. Hanics János



Trachea

- 12-14 cm hosszúságú
- Kb. 17mm átmérőjű



Elölnézet

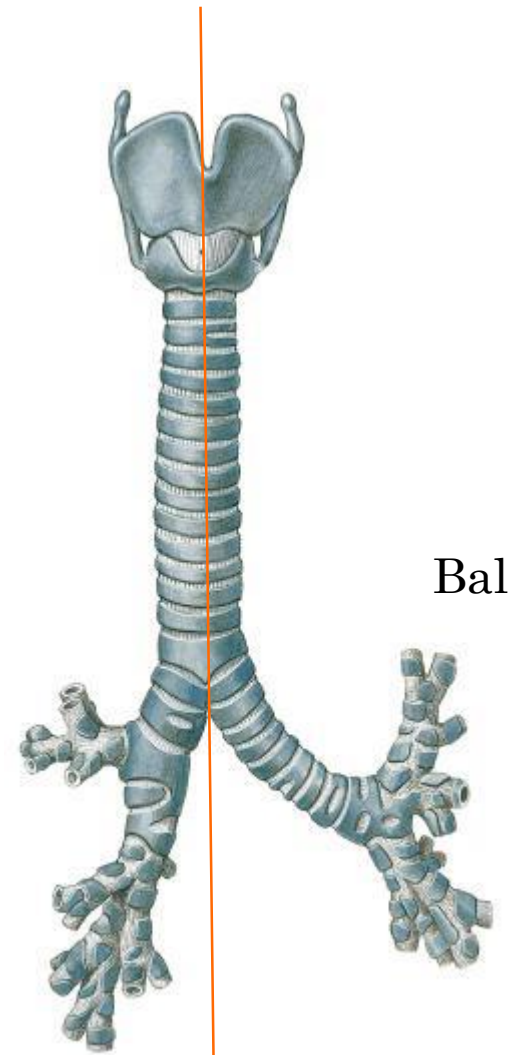
Hátsónézet

Carina tracheae



Jobb

Bal



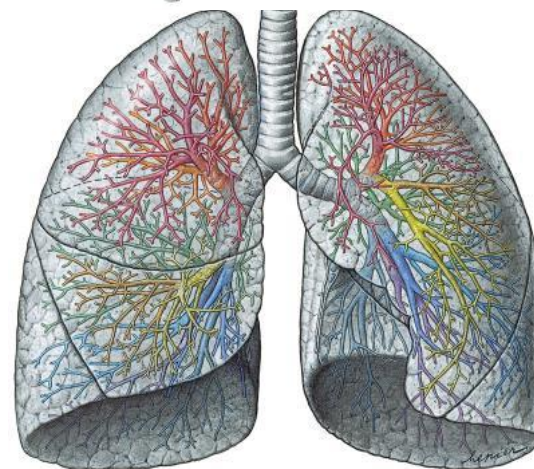
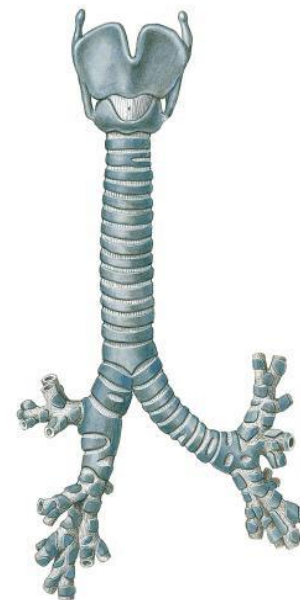
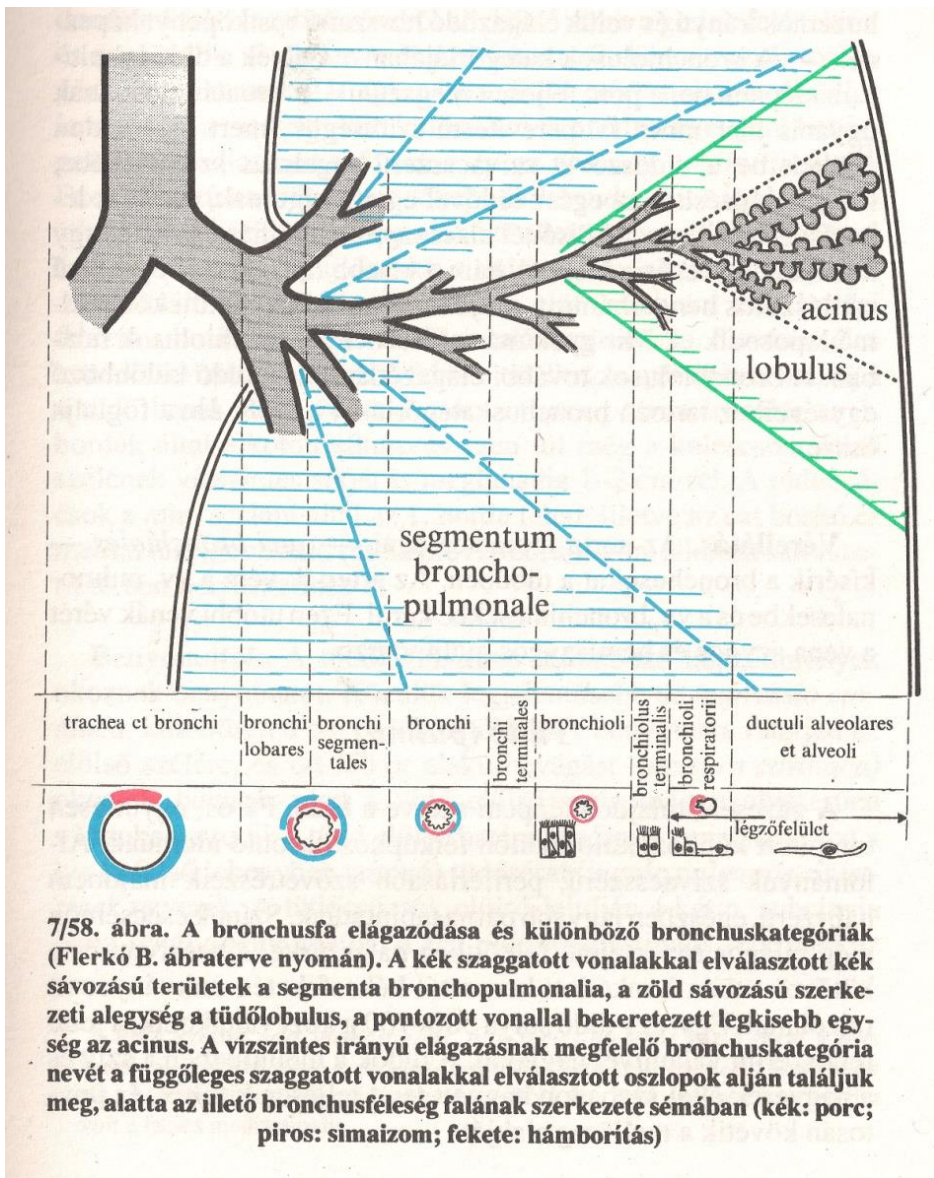
25°

45°



Bronchusfa

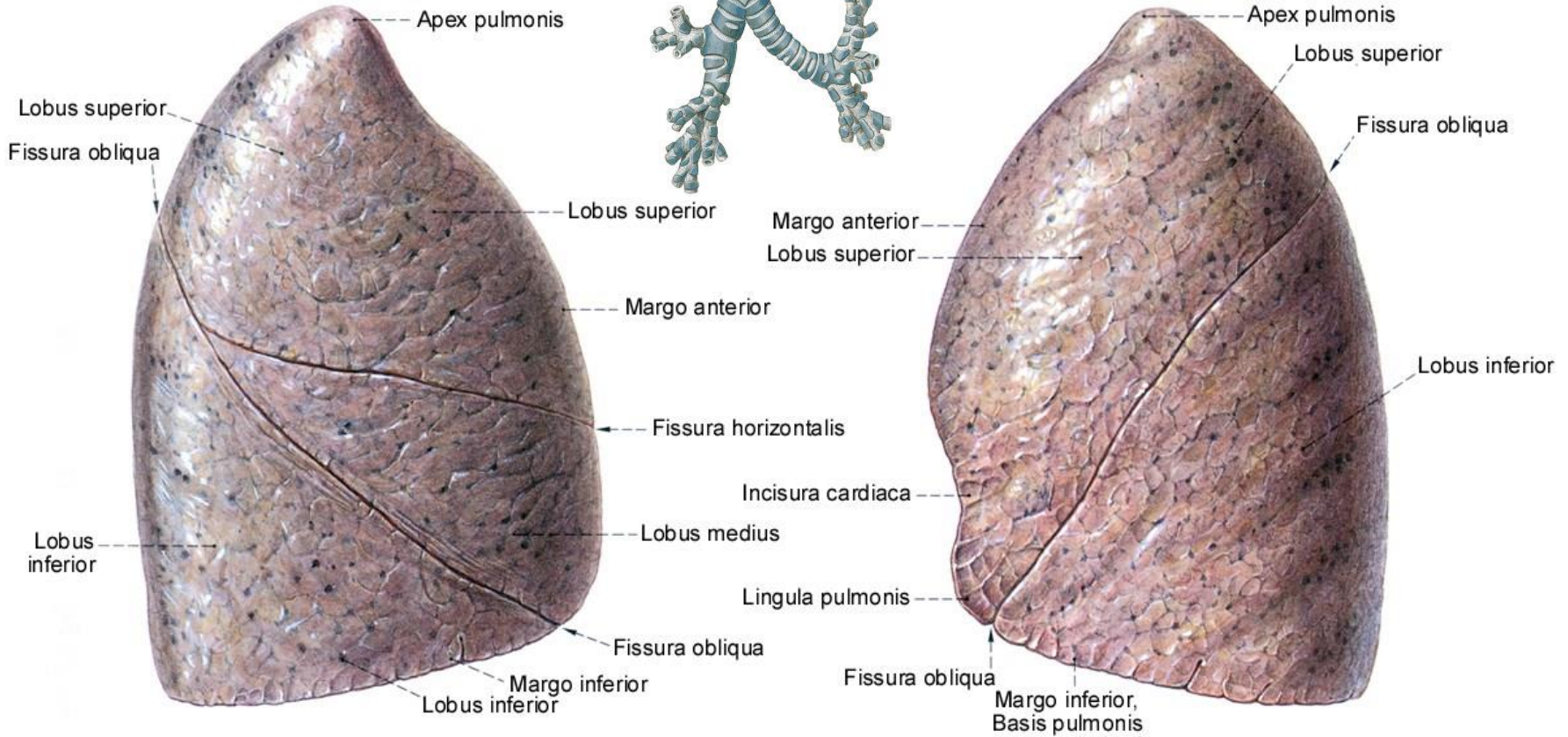
Dichotomikus oszlás



Tüdők

500-700 g

Bronchus lobaris – lobus

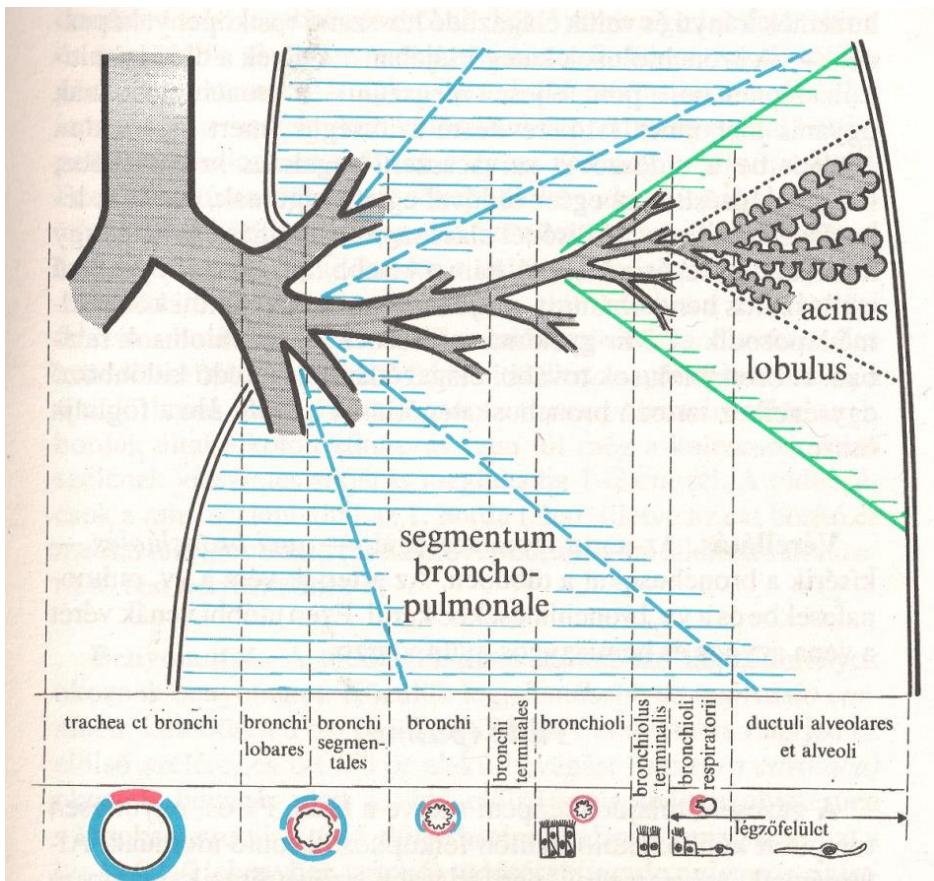


Pulmo dexter
3 lobus

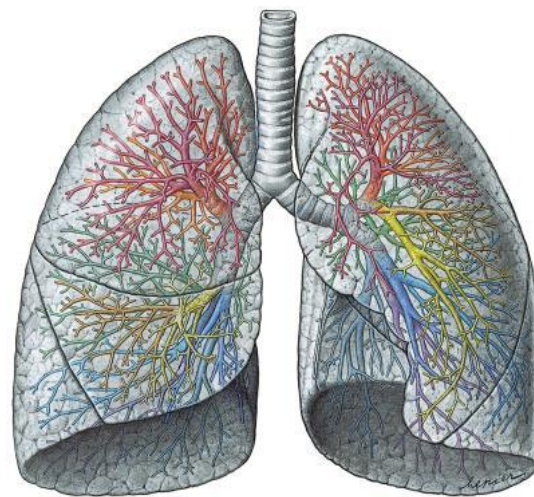
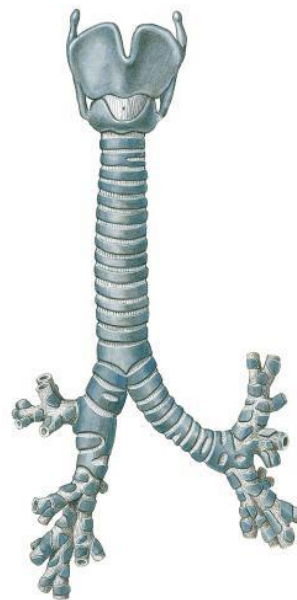
Pulmo sinister
2 lobus



Bronchusfa



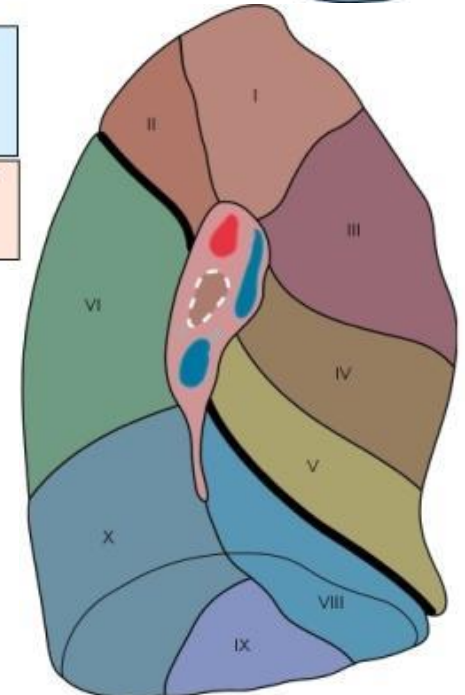
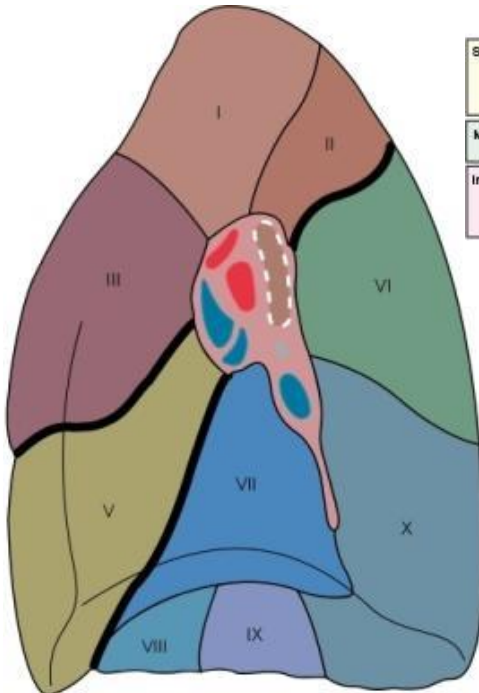
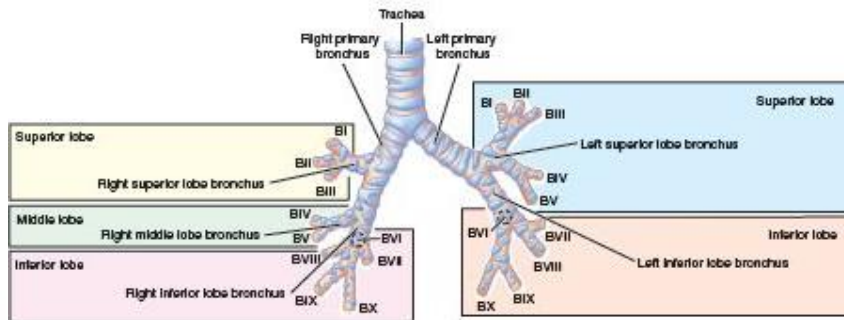
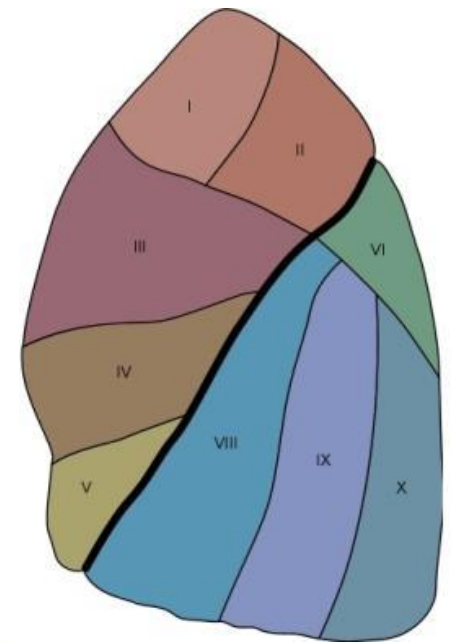
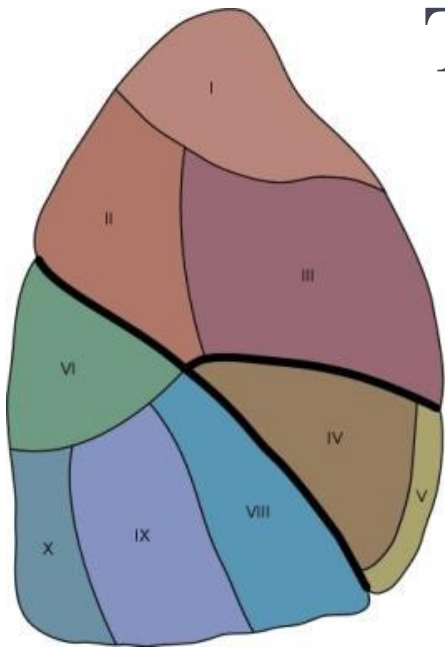
7/58. ábra. A bronchusfa elágazódása és különböző bronchuskategóriák (Flerkó B. ábraterve nyomán). A kék szaggatott vonalakkal elválasztott kék sávózású területek a segmenta bronchopulmonalia, a zöld sávózású szerkezeti alegység a tüdőlobulus, a pontozott vonallal bekeretezett legkisebb egység az acinus. A vízszintes irányú elágazásnak megfelelő bronchuskategória nevét a függőleges szaggatott vonalakkal elválasztott oszlopok alján találjuk meg, alatta az illető bronchusféleség falának szerkezete sémában (kék: porc; piros: simaizom; fekete: hámborítás)



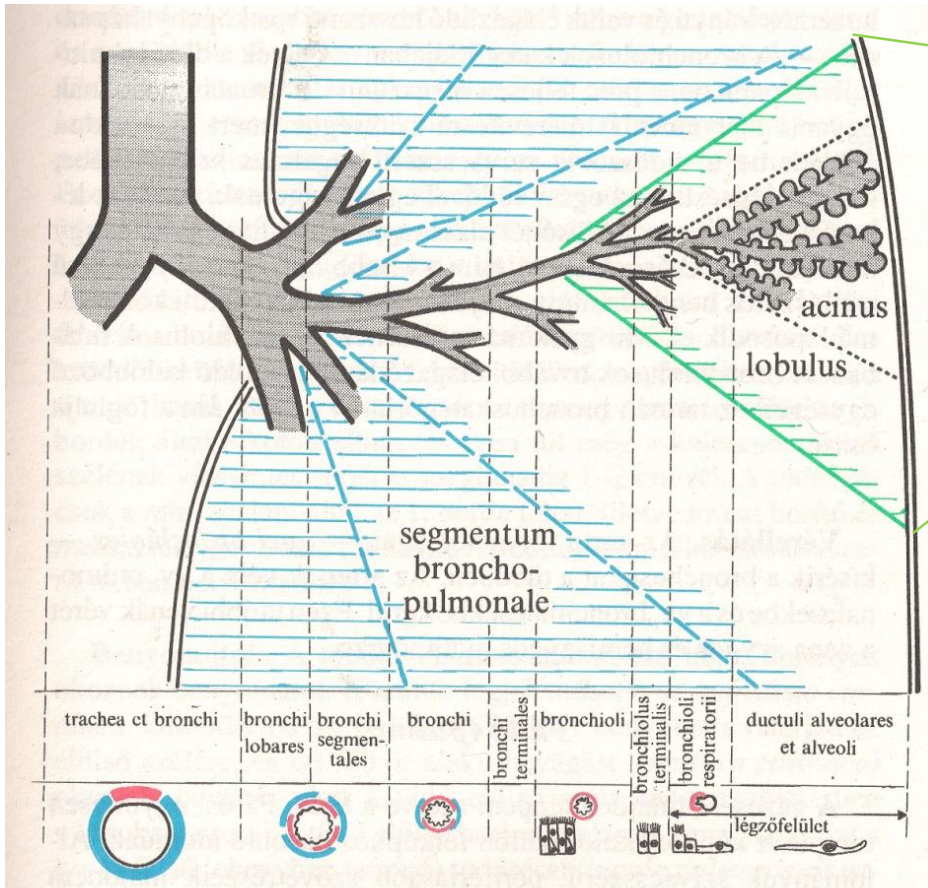
Tüdősegmentumok – segmenta bronchopulmonalia

10 – 10 segmentum

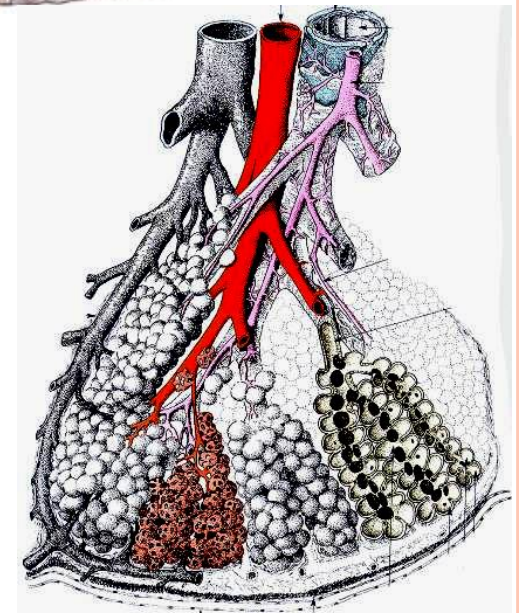
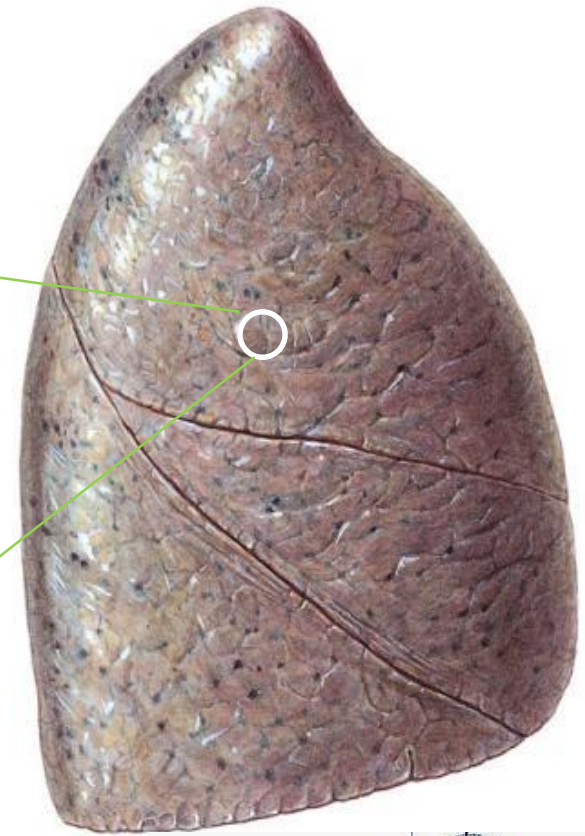
Bronchus segmentalis - segmentum



Bronchus terminalis - lobulus

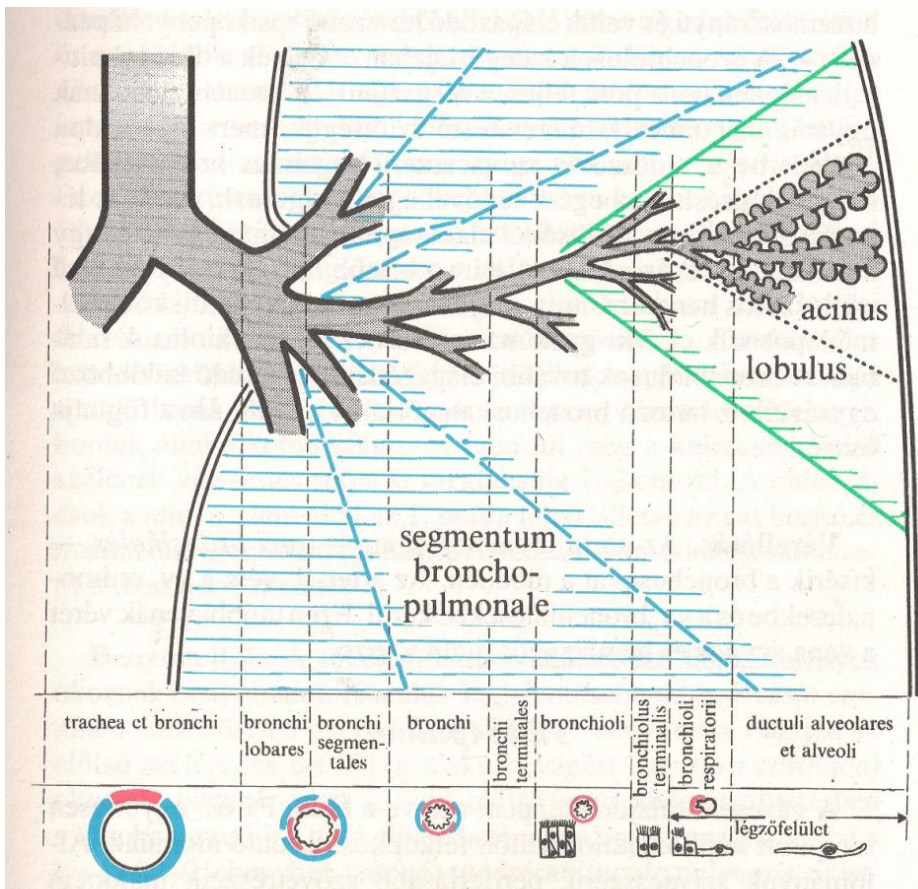


7/58. ábra. A bronchusfa elágazódása és különböző bronchuskategóriák (Flerkó B. ábraterve nyomán). A kék szaggatott vonalakkal elválasztott kék sávos terület a segmenta bronchopulmonalia, a zöld sávos szerkezeti alegység a tüdőlobulus, a pontozott vonallal bekeretezett legkisebb egység az acinus. A vízszintes irányú elágazásnak megfelelő bronchuskategória nevét a függőleges szaggatott vonalakkal elválasztott oszlopok alján találjuk meg, alatta az illető bronchusféleség falának szerkezete sémában (kék: porc; piros: simaizom; fekete: hámborítás)

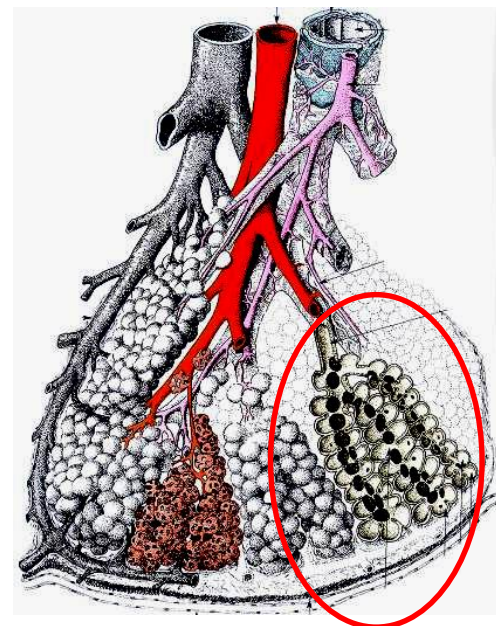


Bronchiolus terminalis

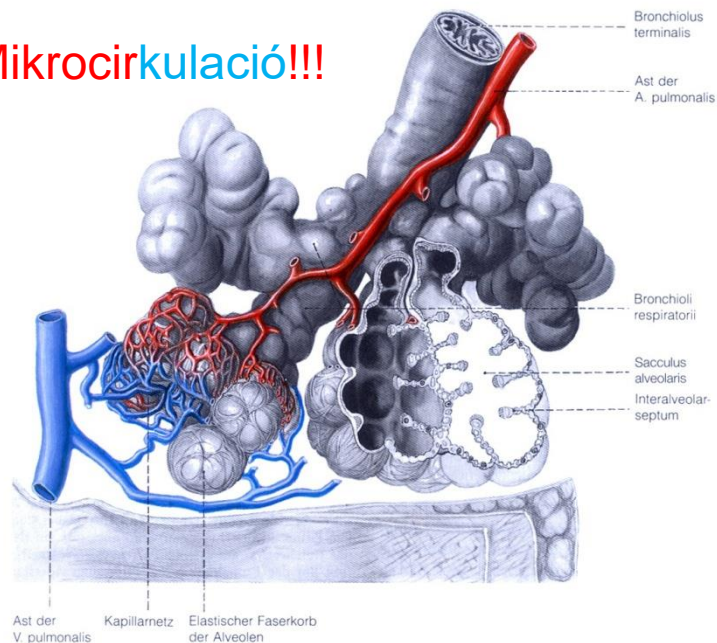
- acinus



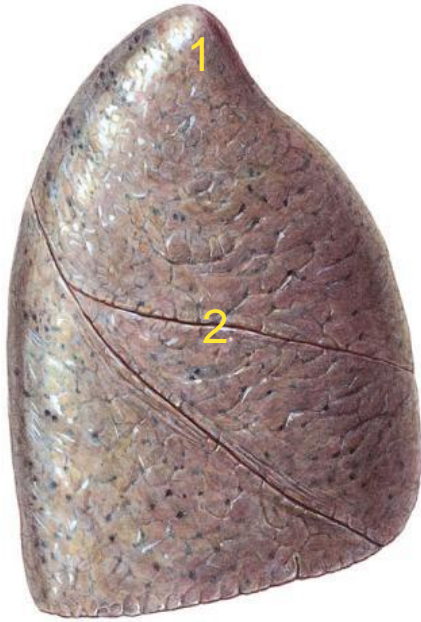
7/58. ábra. A bronchusfa elágazódása és különböző bronchuskategóriák (Flerkó B. ábraterve nyomán). A kék szaggatott vonalakkal elválasztott kék sávosított területek a segmenta bronchopulmonalia, a zöld sávosított szerkezeti alegység a tüdőlobulus, a pontozott vonallal bekeretezett legkisebb egység az acinus. A vízszintes irányú elágazásnak megfelelő bronchuskategória nevét a függőleges szaggatott vonalakkal elválasztott oszlopok alján találjuk meg, alatta az illető bronchusfalának szerkezete sémában (kék: porc; piros: simaizom; fekete: hámborítás)



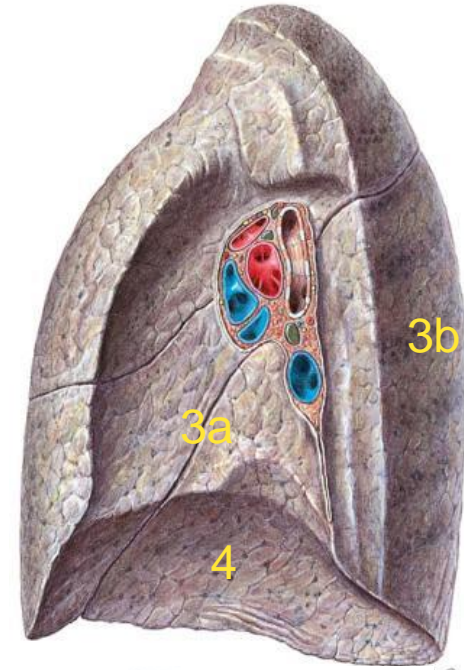
Mikrocirkuláció!!!



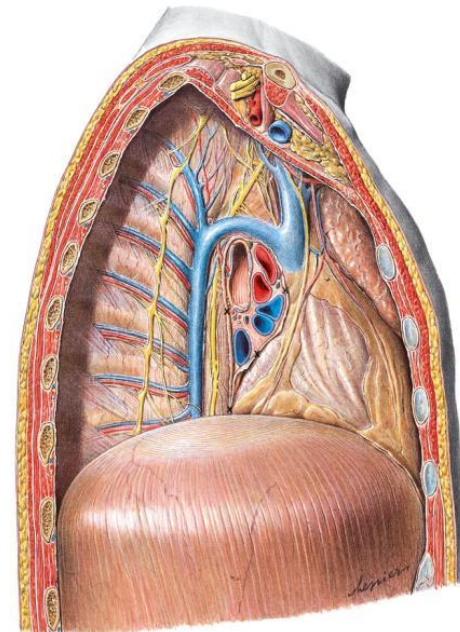
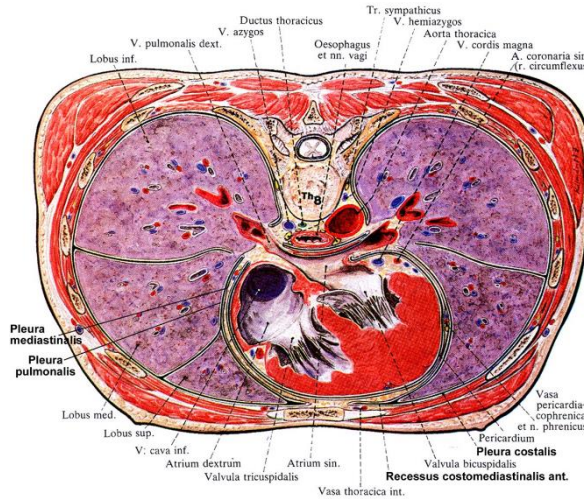
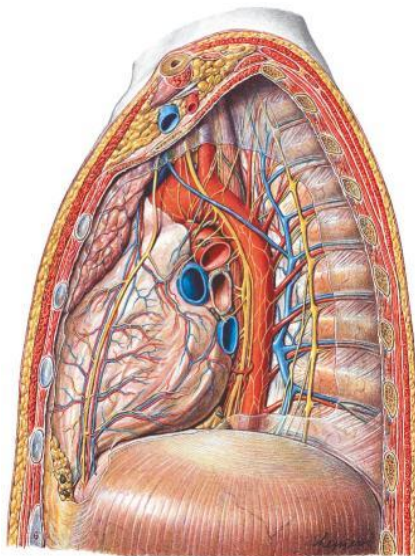
Facies pulmonis



- 1) Apex
- 2) Facies costalis
- 3) Facies medialis
 - a) pars vertebralis
 - b) pars mediastinalis

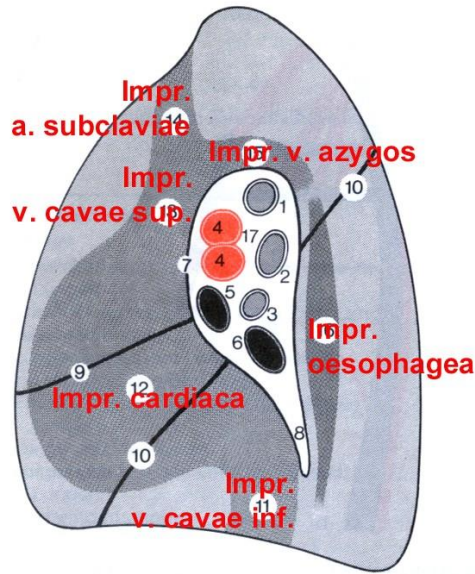


- 4) Facies diaphragmaticus

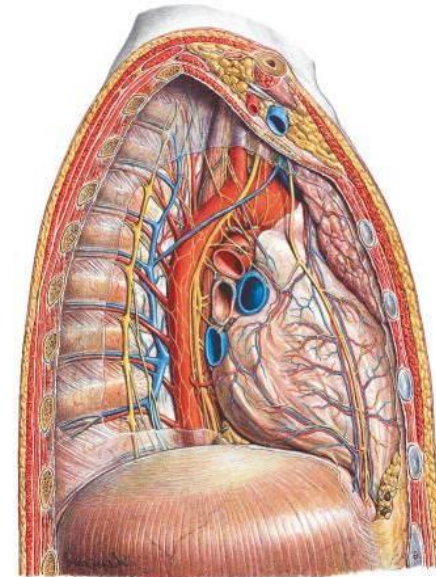
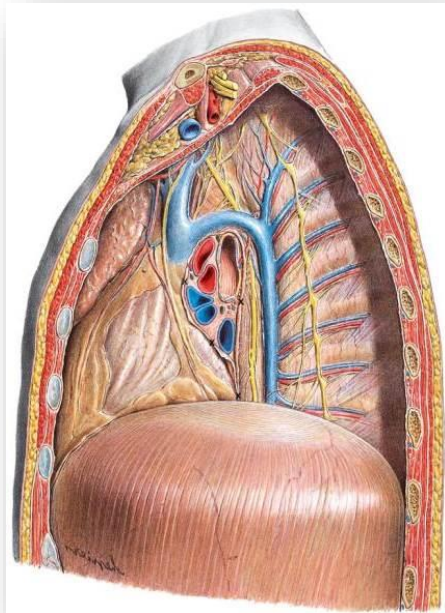
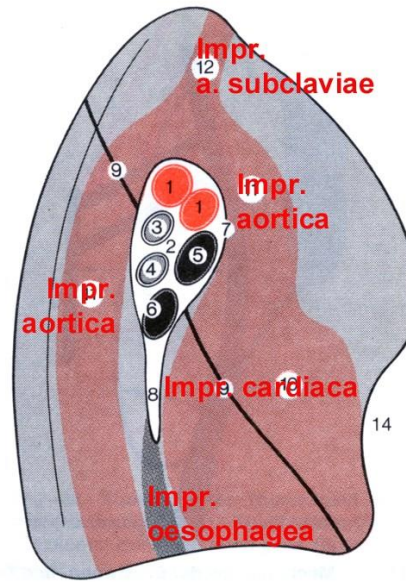


Benyomatok

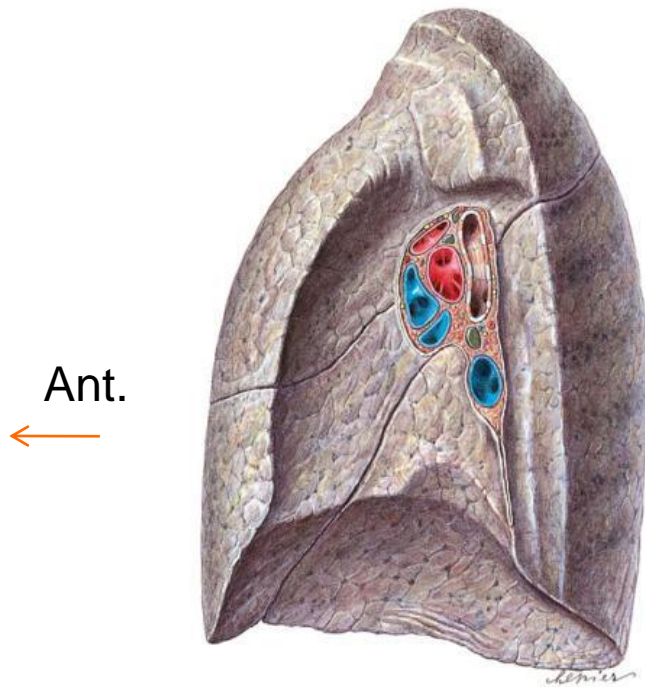
Jobb



Bal

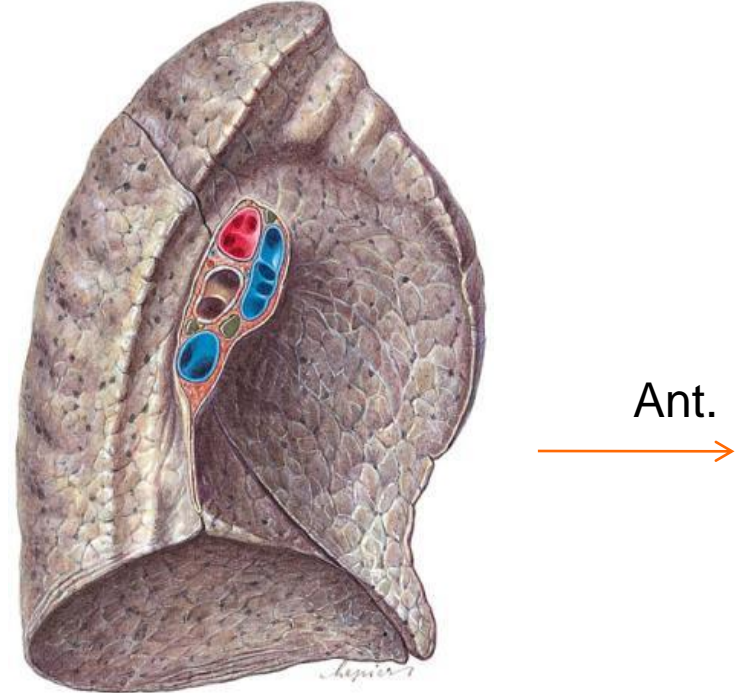


Hilus et radix pulmonis



Pulmo dexter

eparterialis



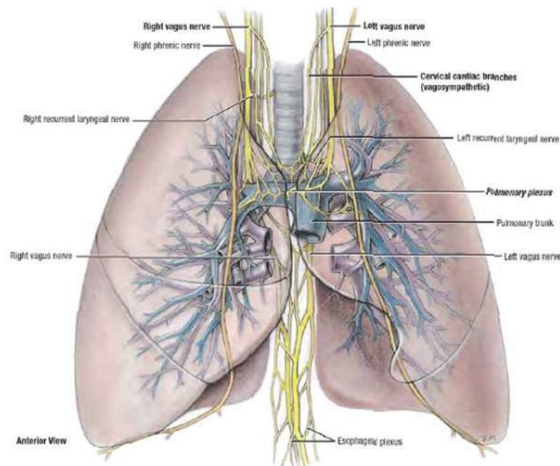
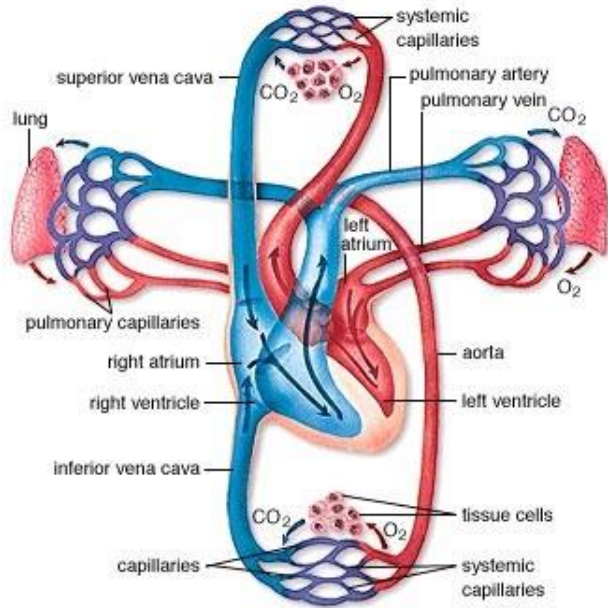
Pulmo sinister

hyarterialis

Bronchus principalis helyzete



Vérellátás és beidegzés

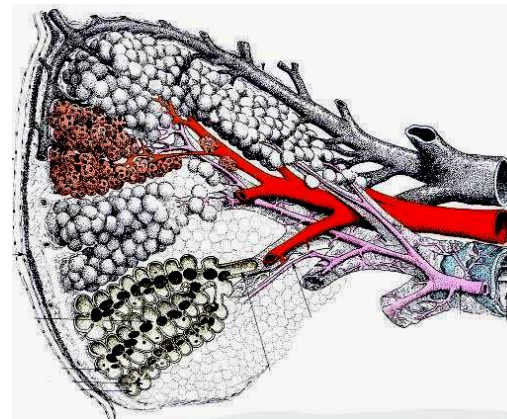


A kisvérkör erei:

- aa. pulmonales (2)
- vv. pulmonales (4)

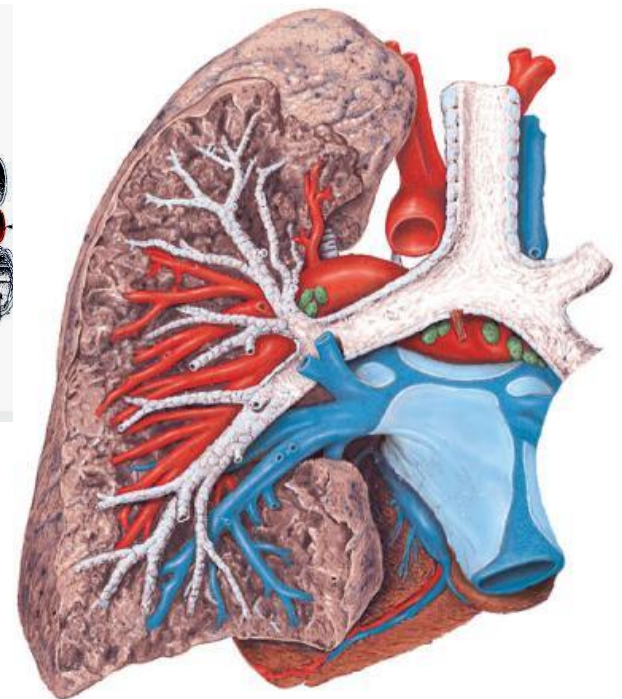
A nagyvérkör irányából(!):

- Rami bronchiales (aorta thoracica)
- vv. Bronchiales (vv. azygos et hemiazygos)

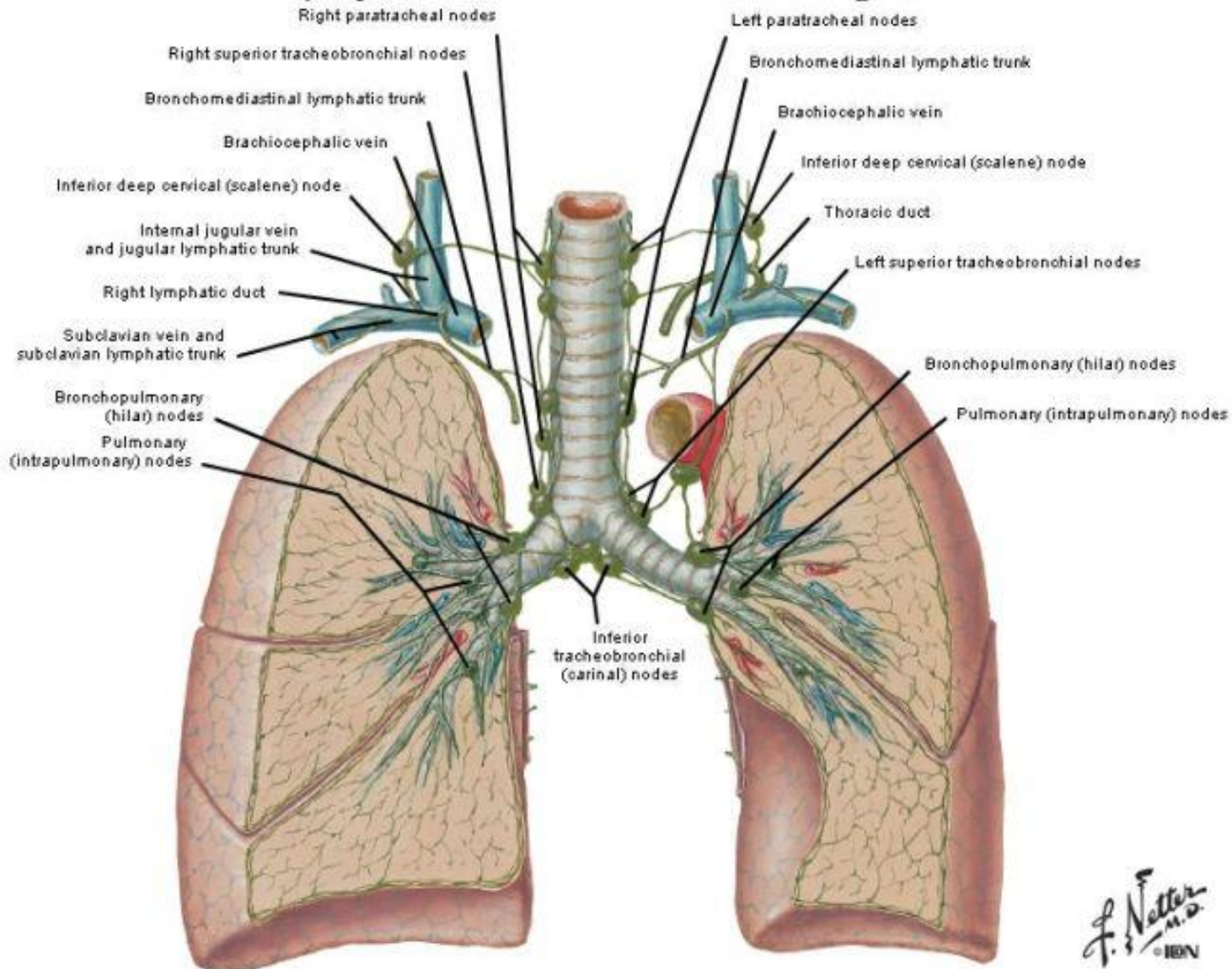


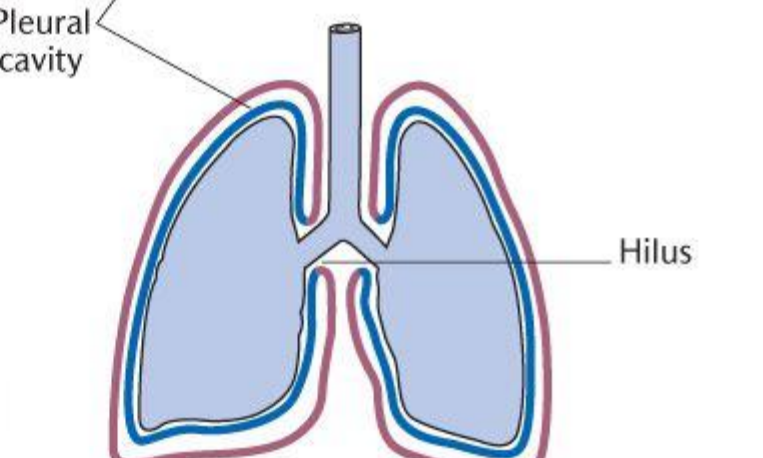
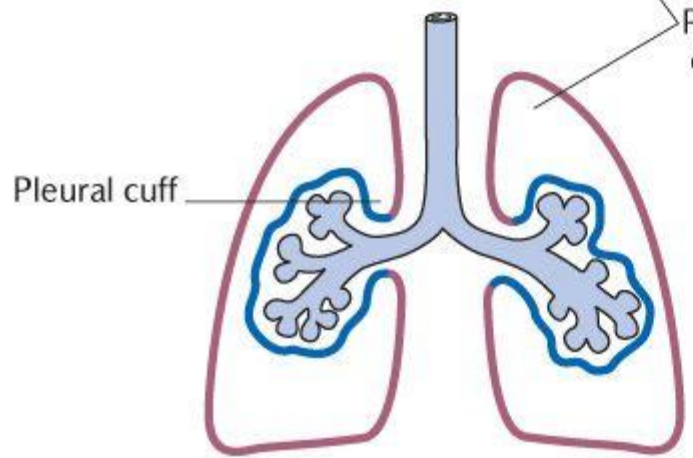
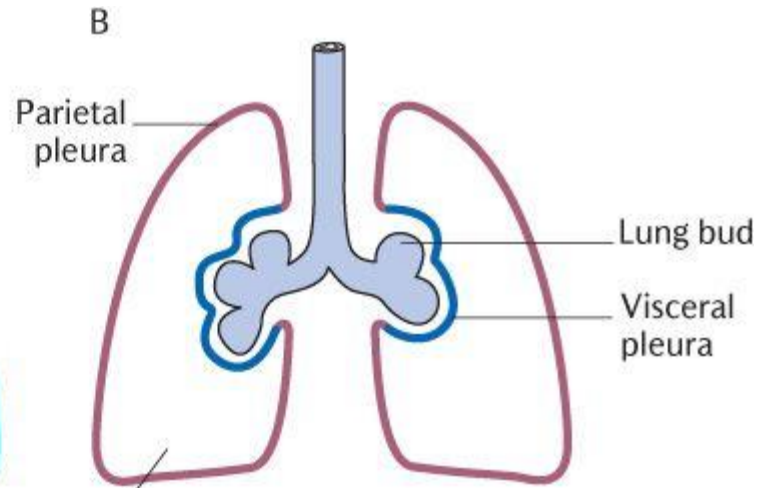
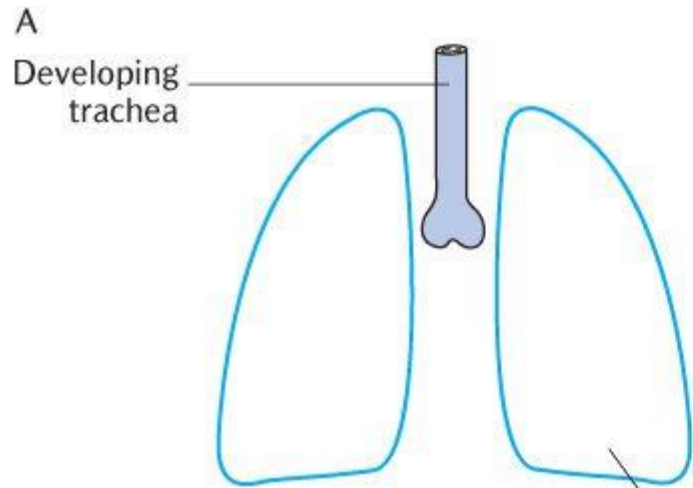
Mikrocirkuláció!!!

Beidegzés:
n. vagus
Truncus sympathicus



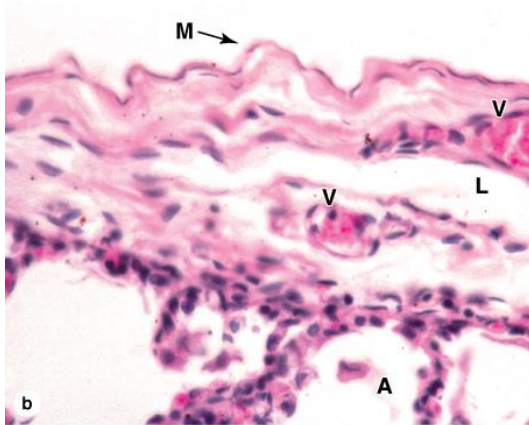
Lymph Vessels and Nodes of Lungs



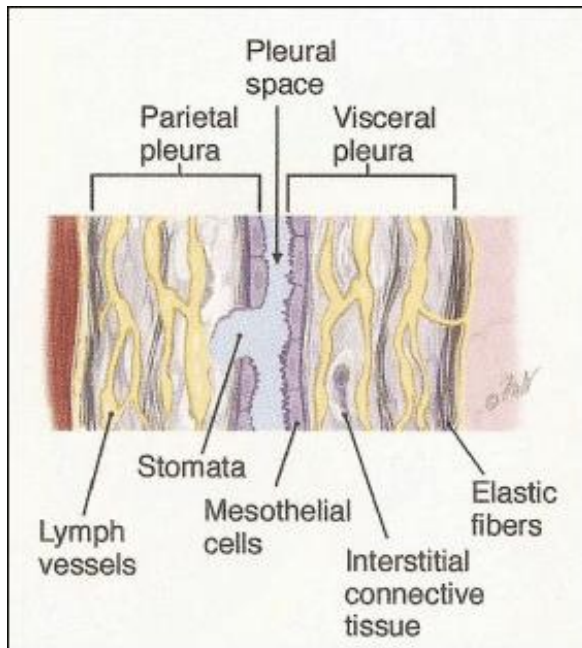


Pleura

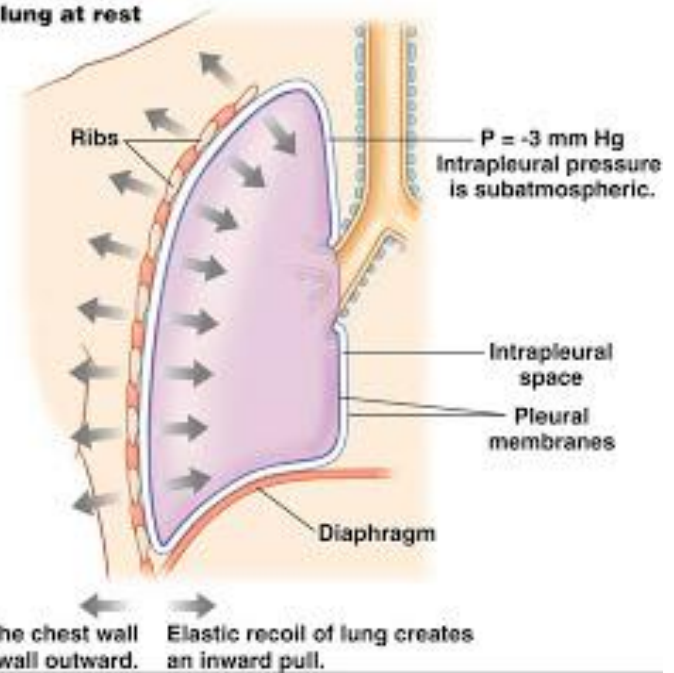
(Mesotheliummal borított felszín)



Source: Mescher AL: *Junqueira's Basic Histology: Text and Atlas, 12th Edition*: <http://www.accessmedicine.com>
Copyright © The McGraw-Hill Companies, Inc. All rights reserved.



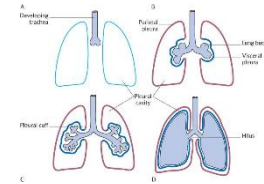
(a) Normal lung at rest



From Sugarbaker D, et al. *Adult Chest Surgery*. Copyright The McGraw-Hill Companies, 2009.
Used with permission of Marcia Williams, illustrationist.

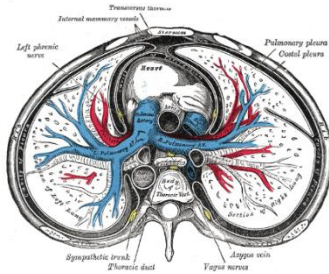


Pleura (mellhártya)



Pleura pulmonalis

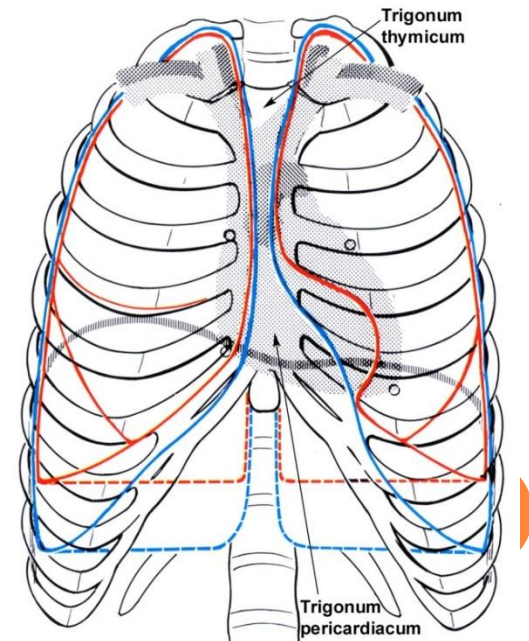
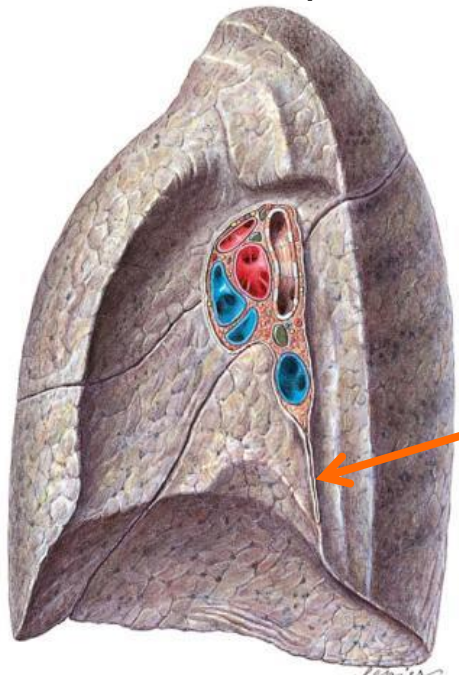
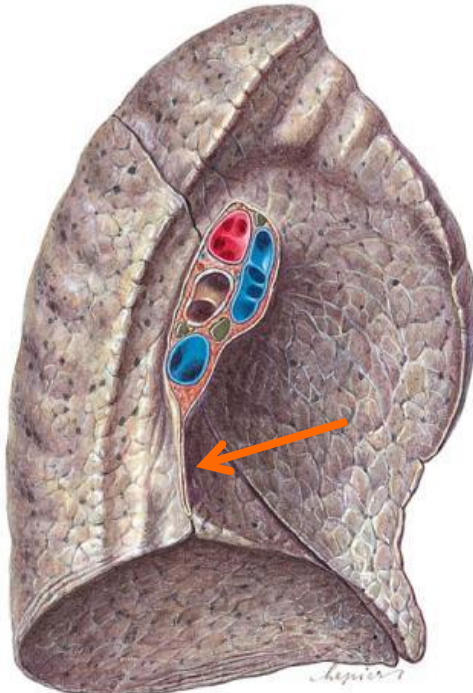
- Követi a fissurákat is



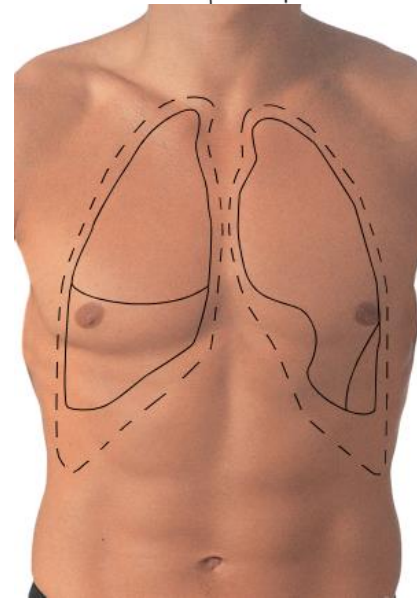
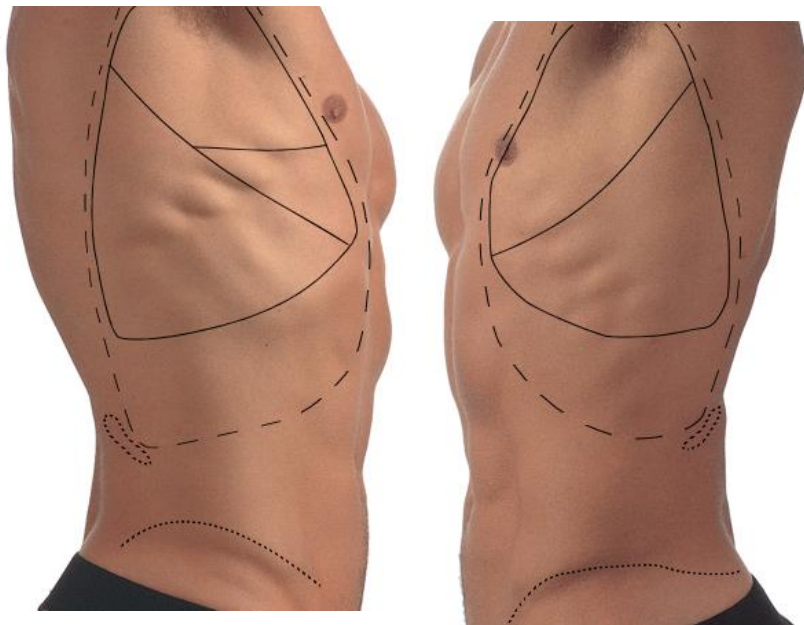
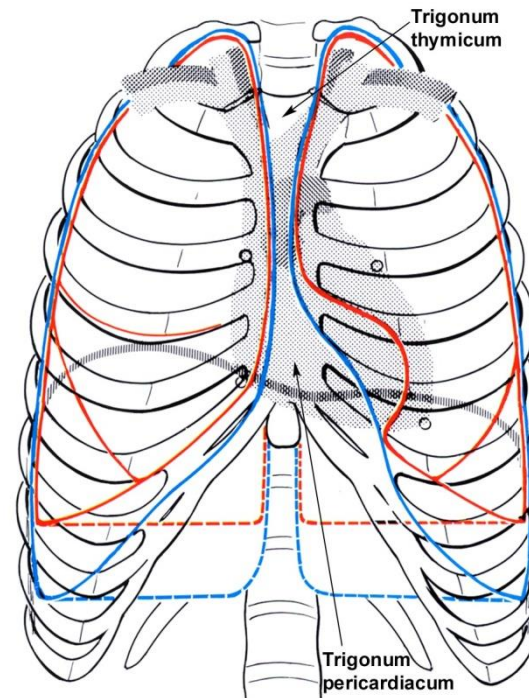
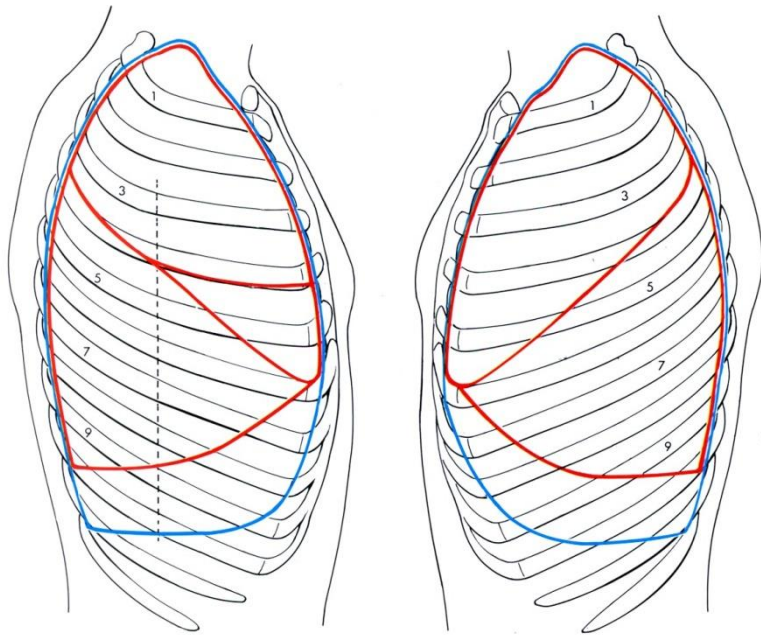
Pleura parietalis (fascia endothoracica rögzíti)

- a) Pleura costalis
- b) Pleura mediastinalis
- c) Pleura diaphragmatica
- d) Cupula pleurae

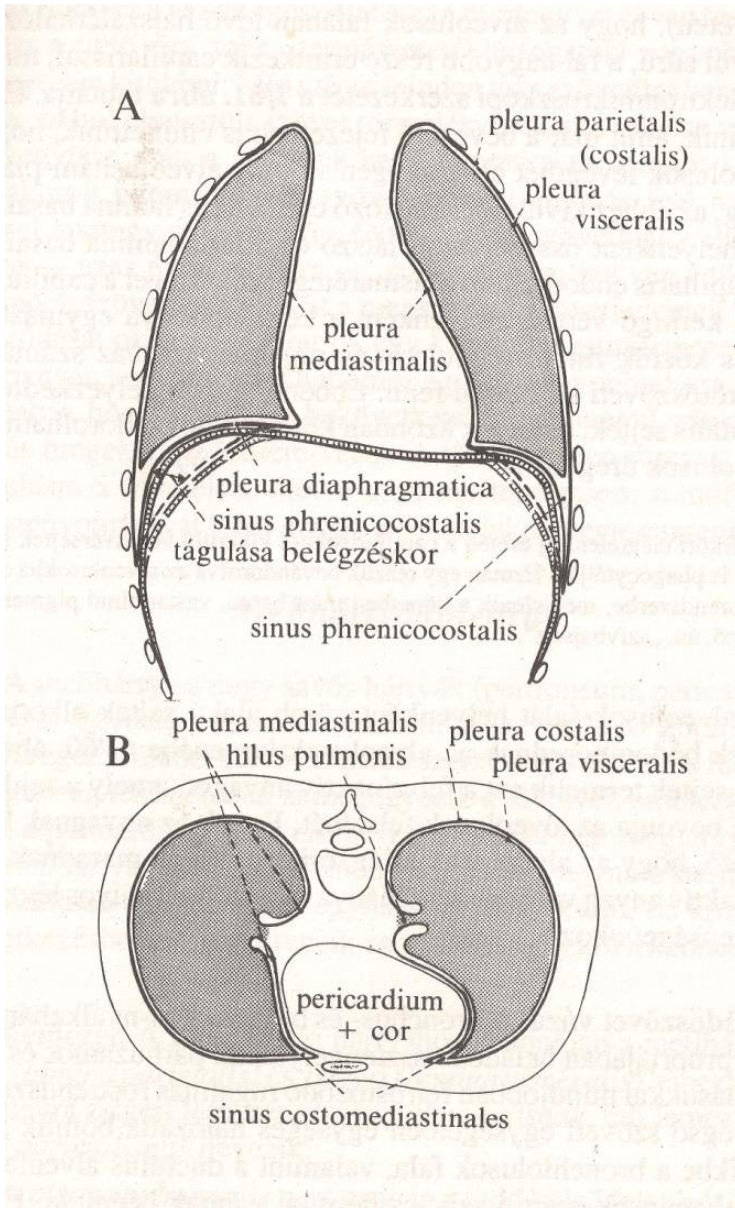
Ligamentum pulmonale (frontalis helyzetű kettőzet) – a visceralis és a parietalis lemez kapcsolódása



Parietalis és visceralis pleura



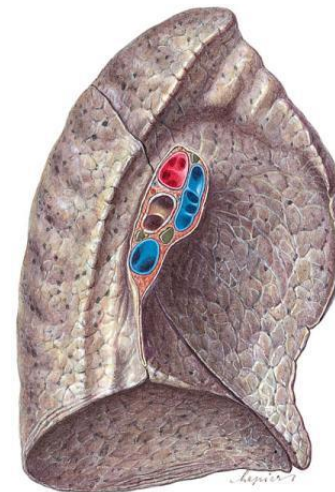
Pleurasinusok

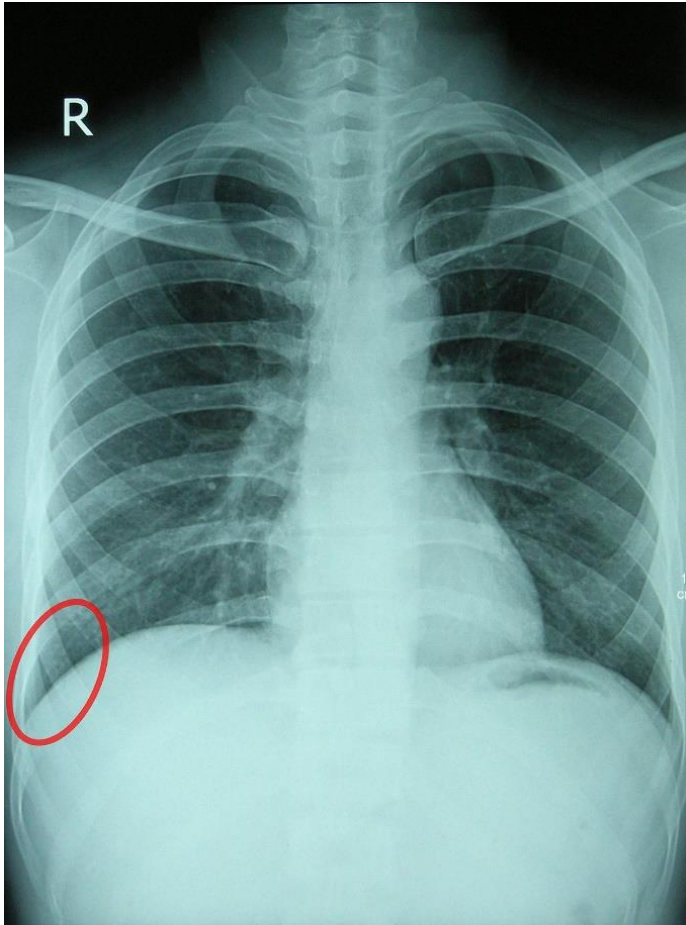


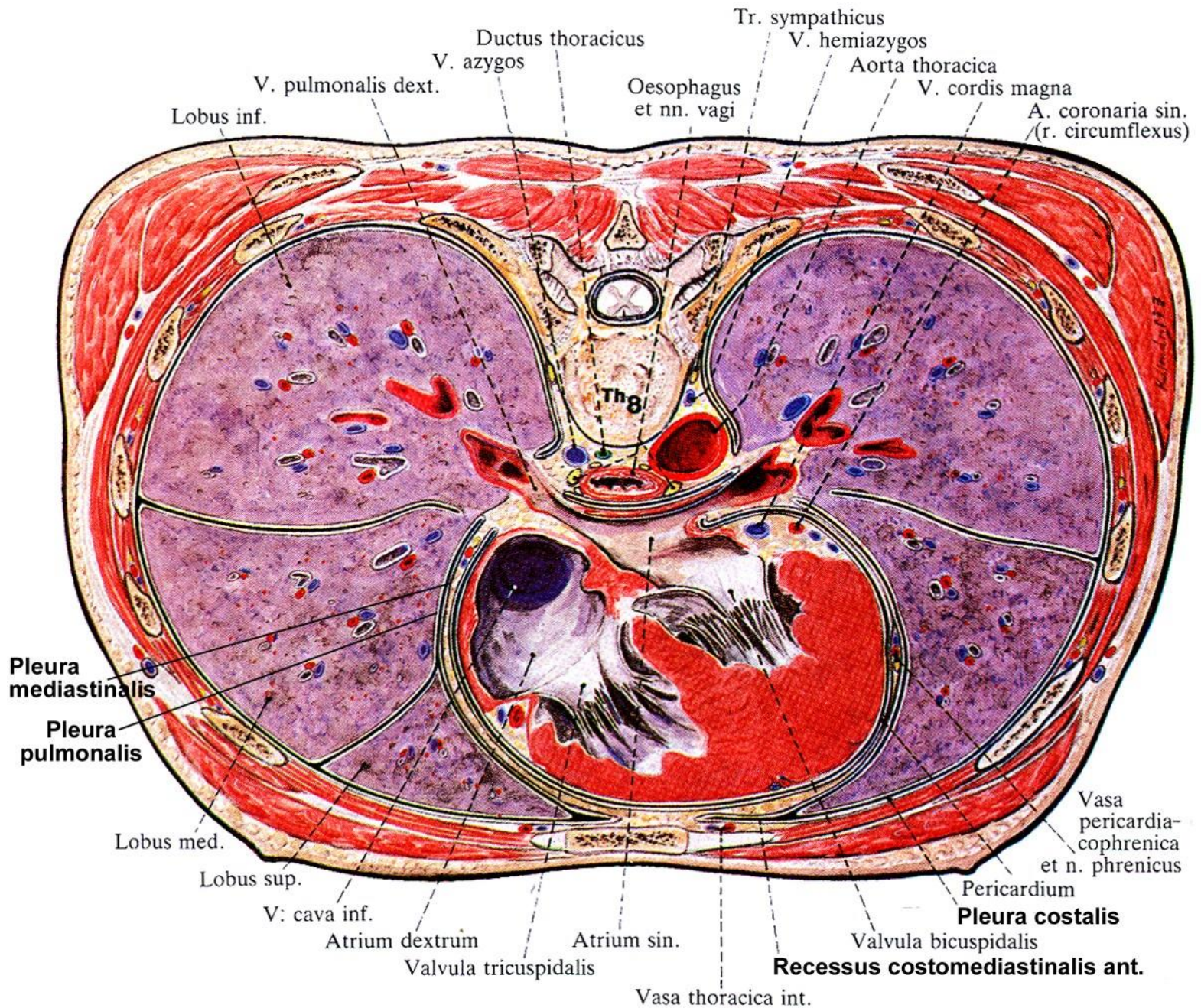
Sinus phrenicocostalis
(recessus costodiaphragmaticus)

Sinus costomediastinalis
(recessus costomediastonalis)

Sinus phrenicomediastinalis
(recessus prenicomediastinalis)







Köszönöm megtisztelő figyelmüket!

