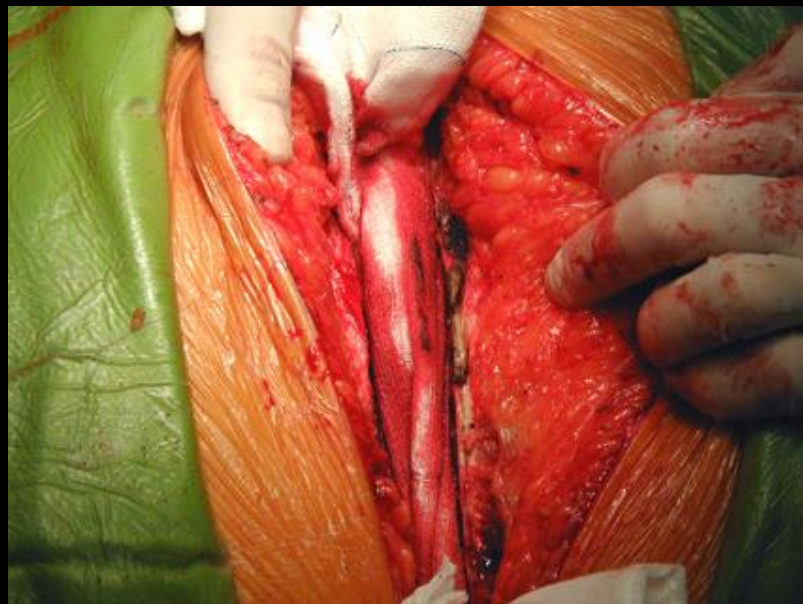
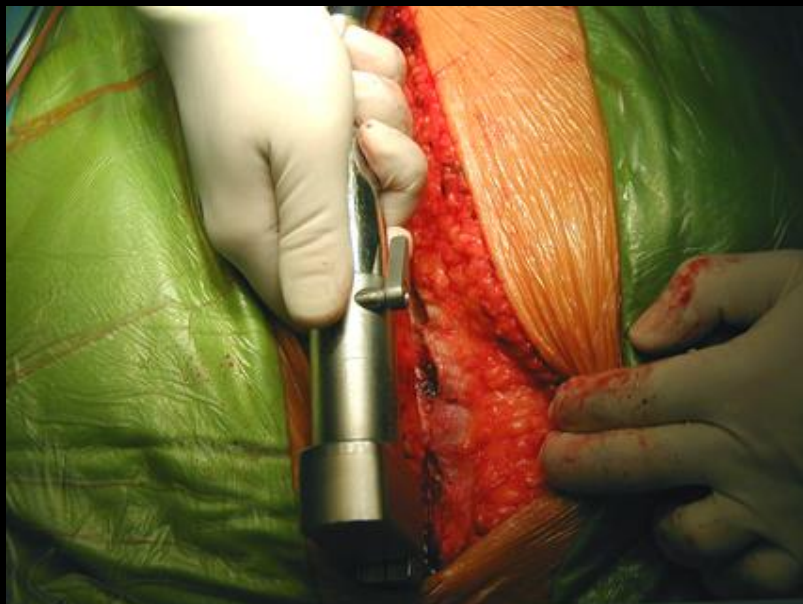
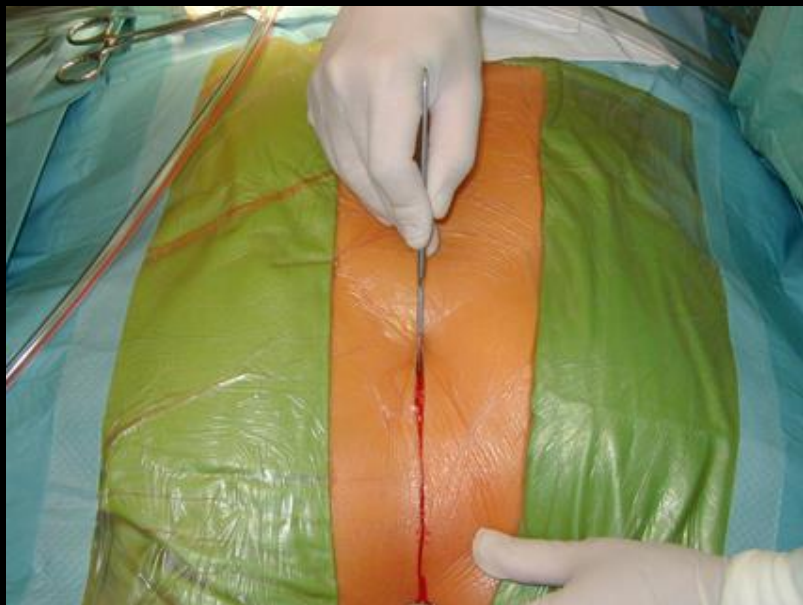


A szív felszíne és üregei. A szívfal szerkezete, anuli fibrosi, myocardium és a szív billentyűi.

Dr. Ruttkay Tamás

**Anatómiai, Szövet- és Fejlődéstani Intézet
2018.**





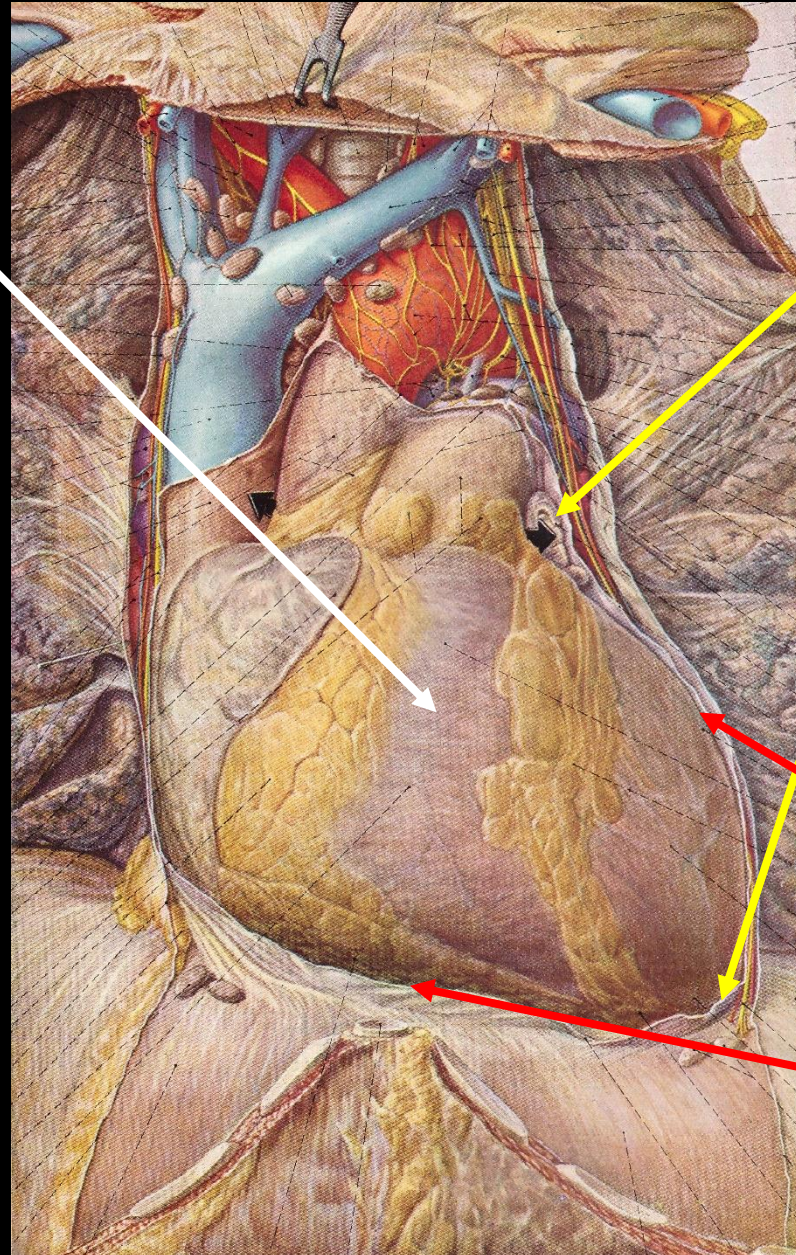
A szív felszíne

Facies sternocostalis:
→ szegycsont és bordák

Facies diaphragmatica:
→ rekesz

**Facies posterior /
mediastinalis:**
→ mediastinum posterius

Facies pulmonalis:
→ tüdő



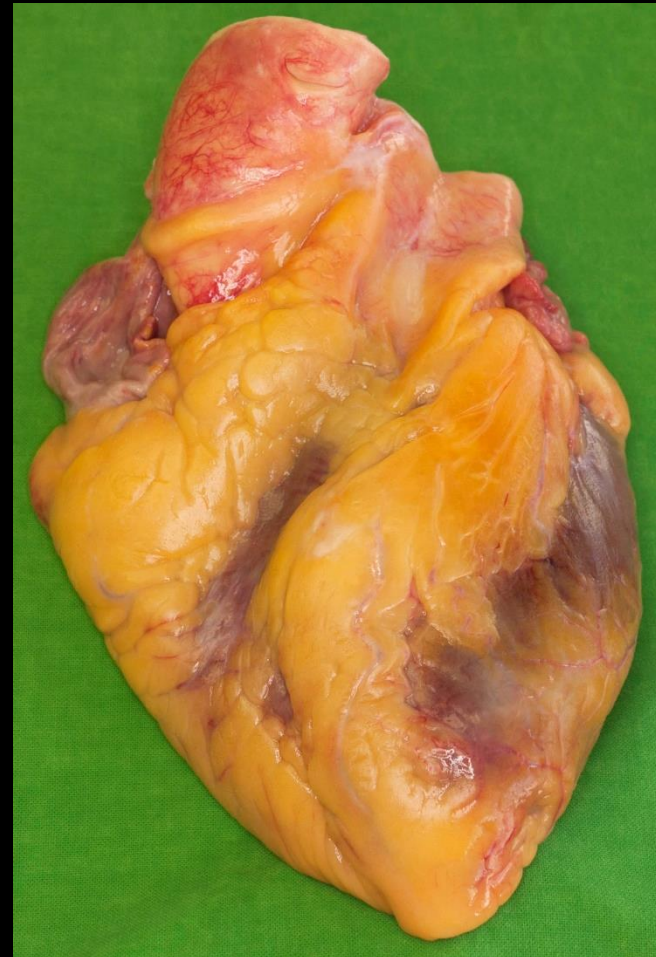
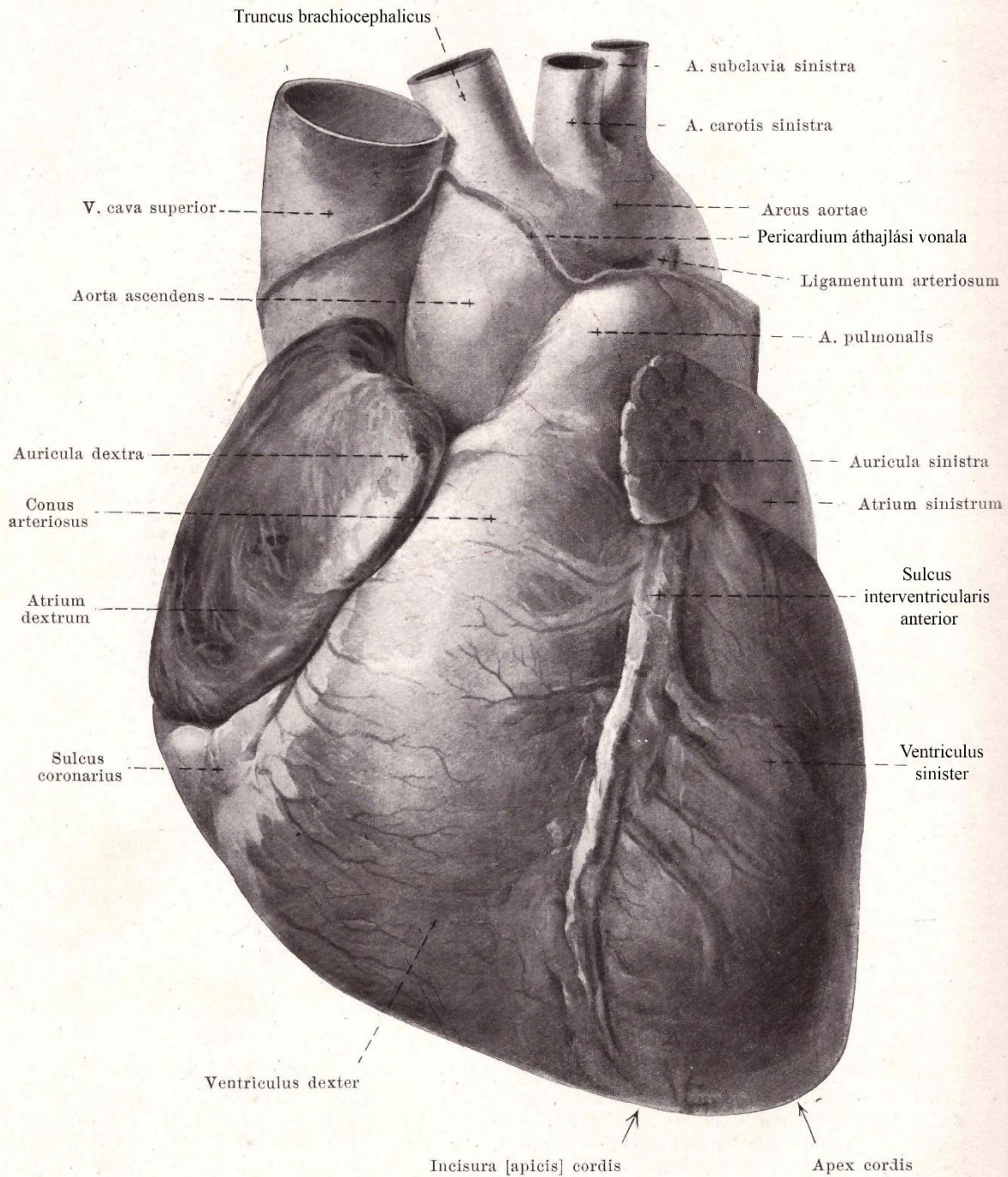
Basis cordis

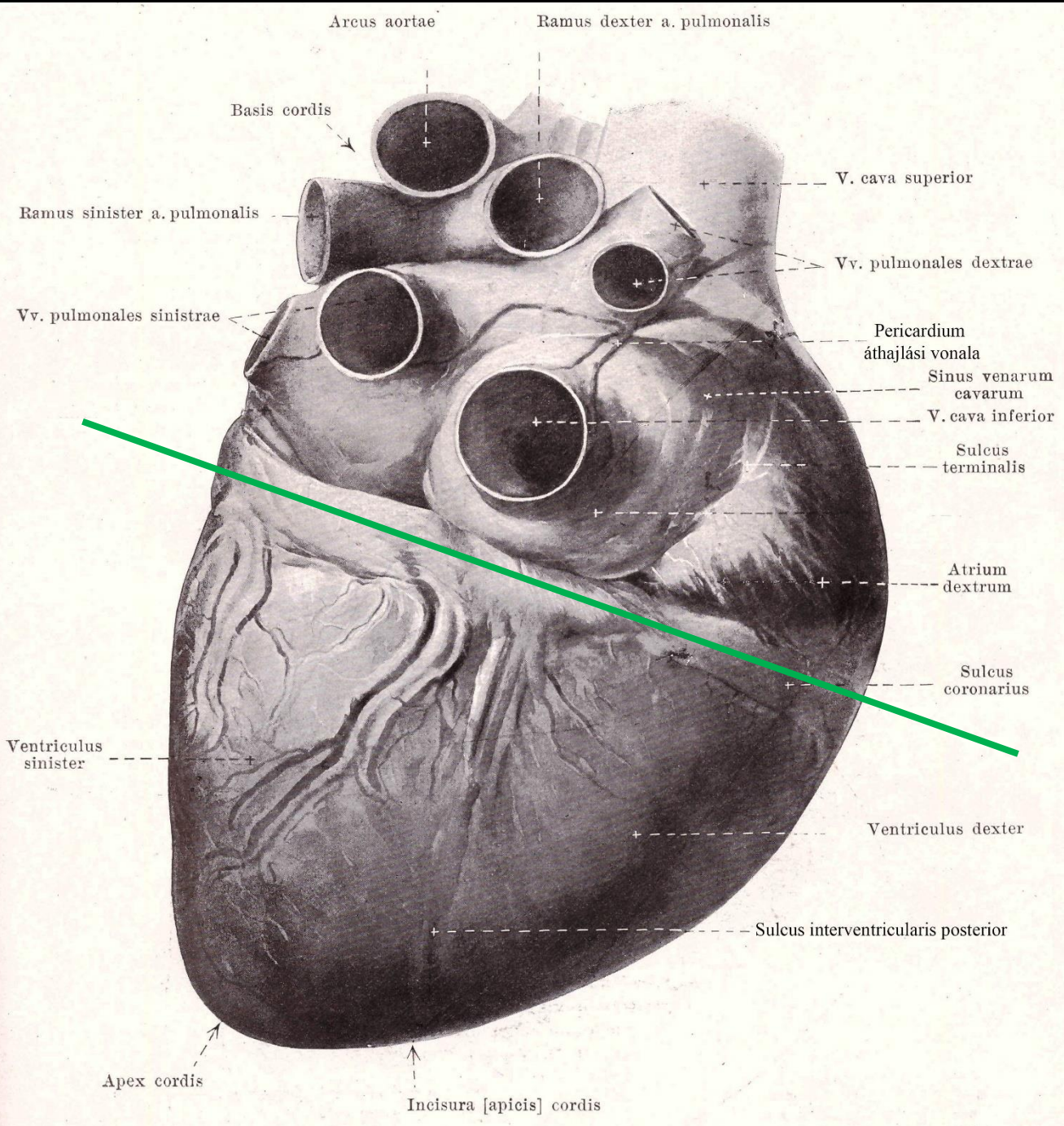
Apex cordis

Margo obtusus / sinister:
→ bal kamrai „tompa”
szél

Margo acutus / dexter:
→ jobb kamrai „hegyes”
szél

Facies sternocostalis





Facies
mediastinalis
 +
diaphragmatica

A szív üregei

Test (oxigénszegény vér)



Vena cava sup. + inf.



Atrium dextrum

- Sinus venarum cavarum
- Auricula dextra
(tulajdonképpeni pitvar)



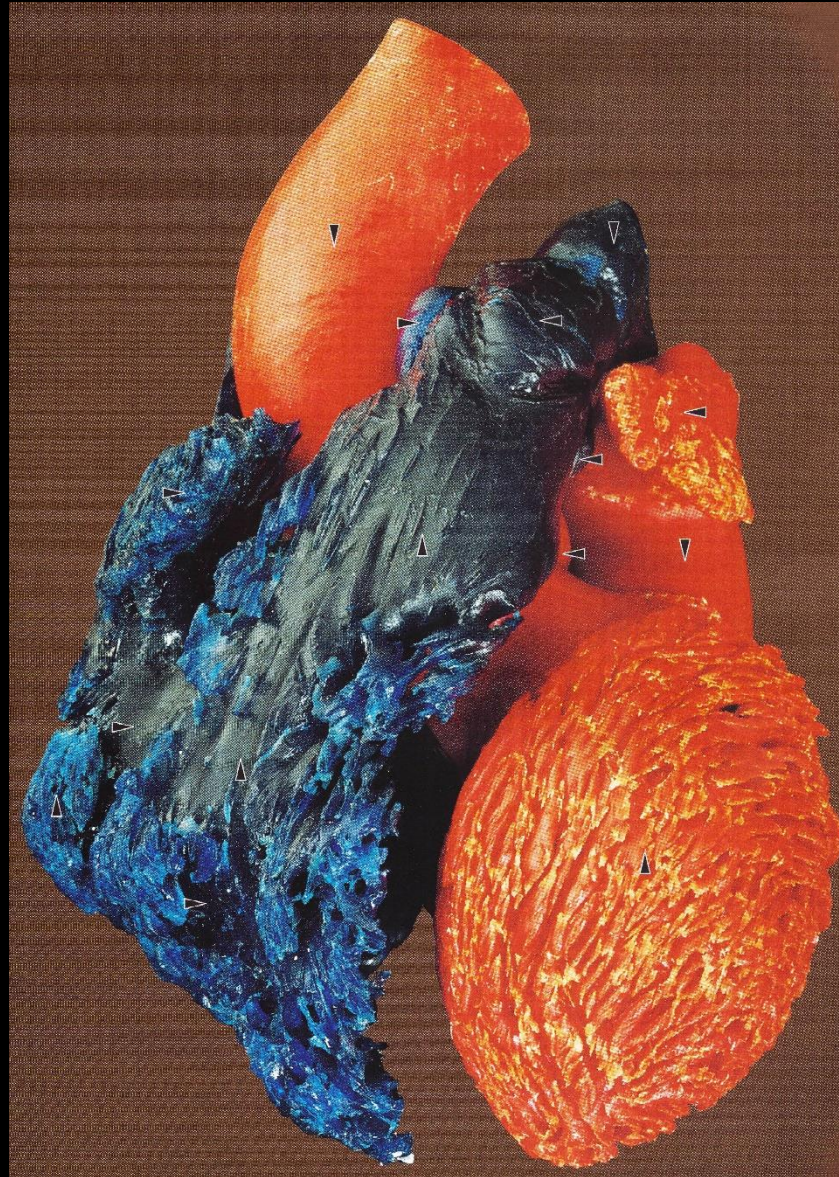
Ventriculus dexter



Truncus pulmonalis



Tüdő



Tüdő (oxigéngazdag vér)



Venae pulmonales



Atrium sinistrum



Ventriculus sinister

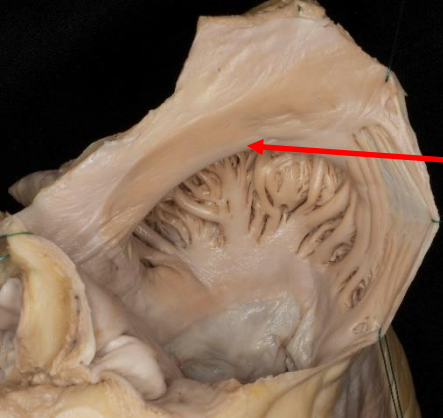


Aorta



Test

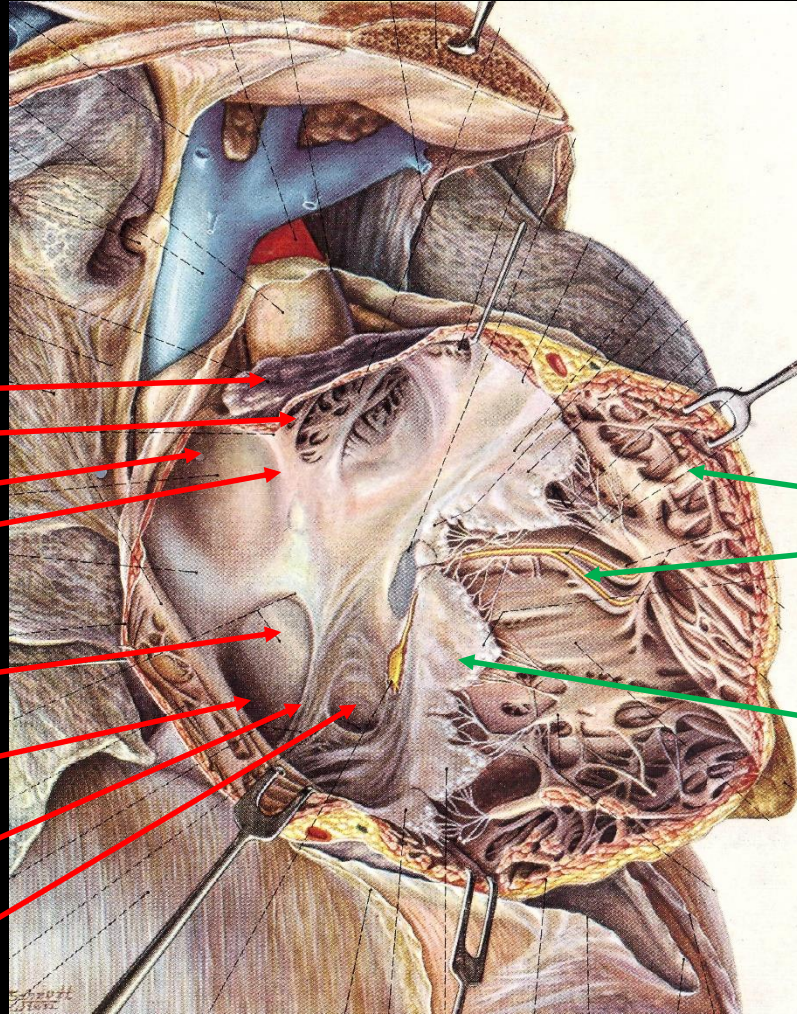
A jobb szívfél



Crista terminalis

Jobb pitvar:

- Auricula dextra
- Musculi pectinati
- Vena cava superior
- Crista terminalis
- Septum interatriale
- Fossa ovalis
- Limbus fossae ovalis
- Vena cava inferior
- Valvula venae cavae inf.
(→Eustach)
- Ostium sinus coronarii
- Valvula sinus coronarii
(→Thebesius)

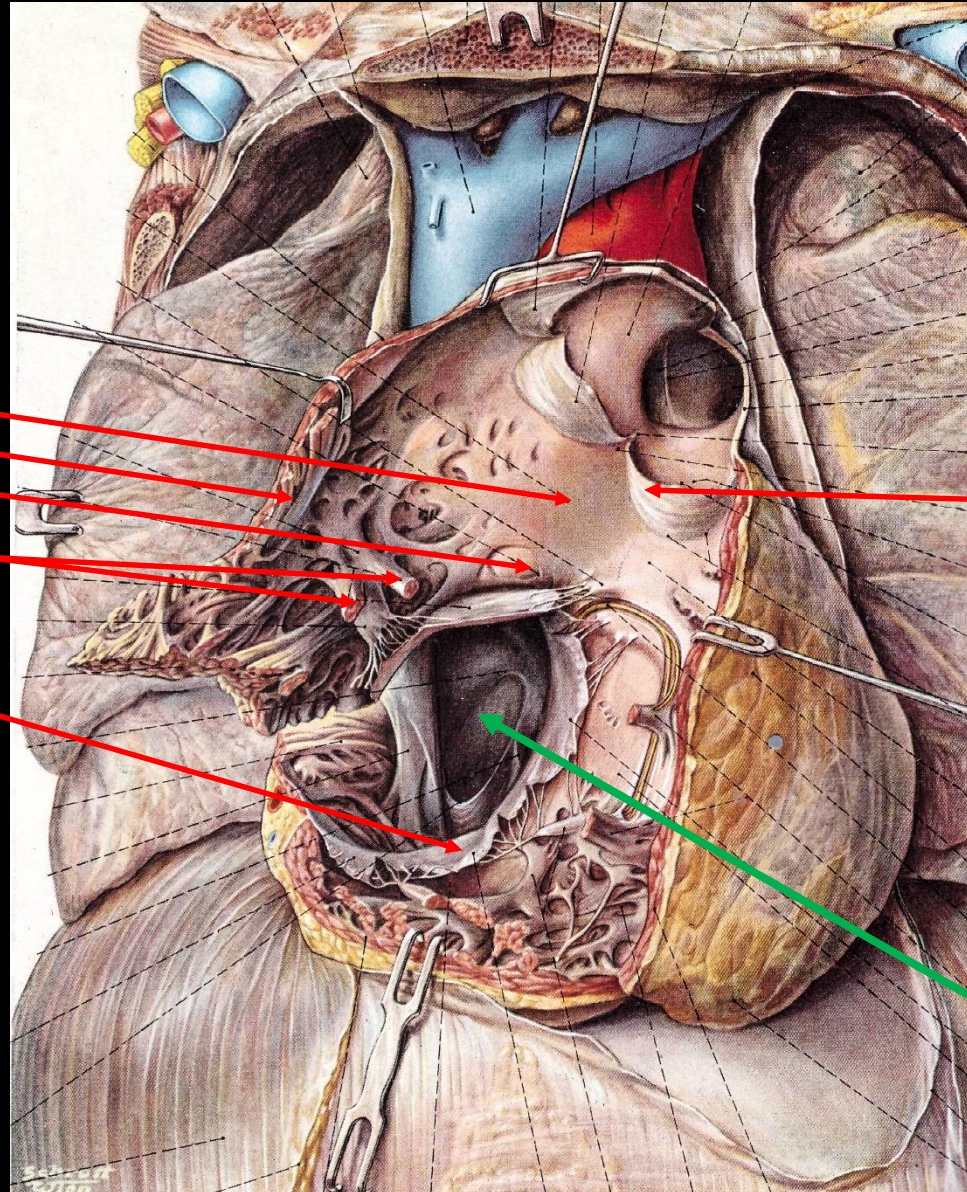


Jobb kamra:

- Trabeculae carneae
- Trabecula septomarginalis
- Crista supraventricularis
- Valva tricuspidalis

Pernkopf

A jobb szívfél



Jobb kamra:

Infundibulum

Trabeculae carneae

Crista supraventricularis

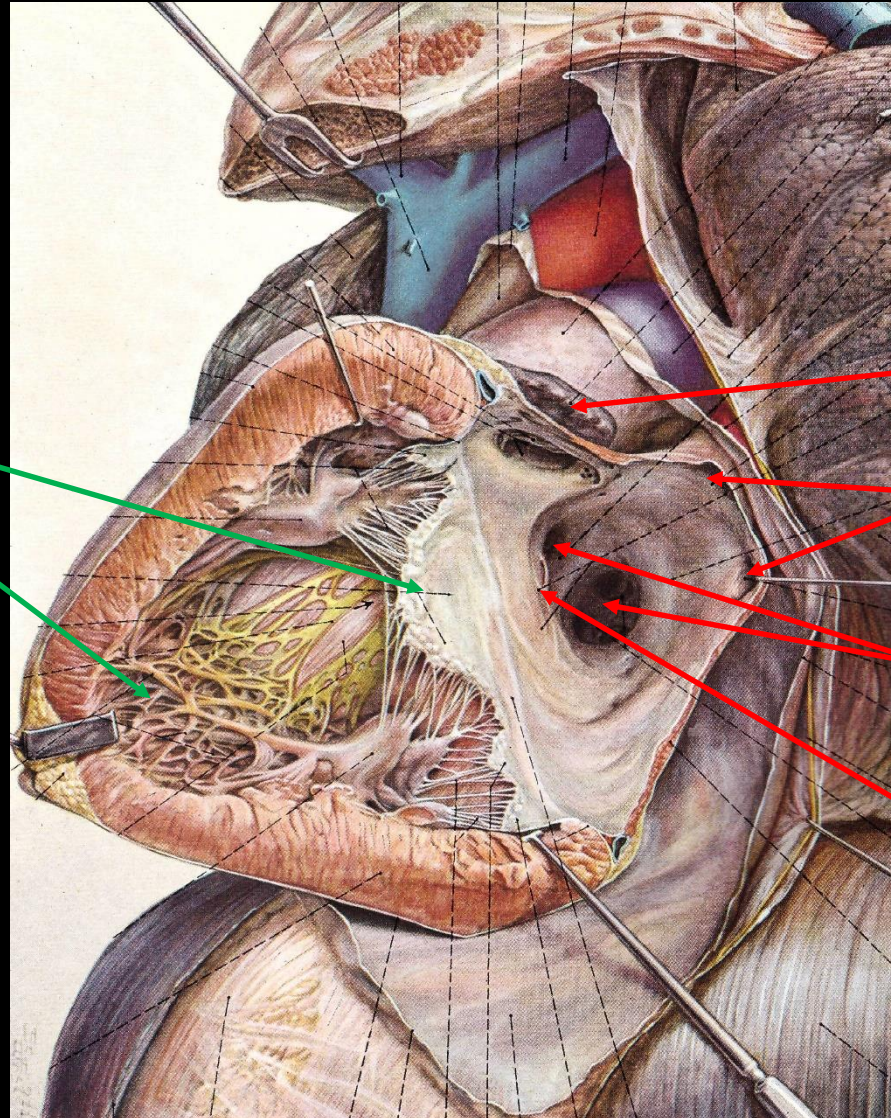
Trabecula septomarginalis

Valva tricuspidalis

Valva trunci
pulmonalis

Jobb pitvar

A bal szívfél



Bal kamra:

Valva mitralis

Trabeculae carneae

Bal pitvar:

Auricula sinistra

Vena pulmonales
sinistrae

Venae pulmonales
dextrae

Septum interatriale

A bal szívfél

Bal kamra:

Myocardium

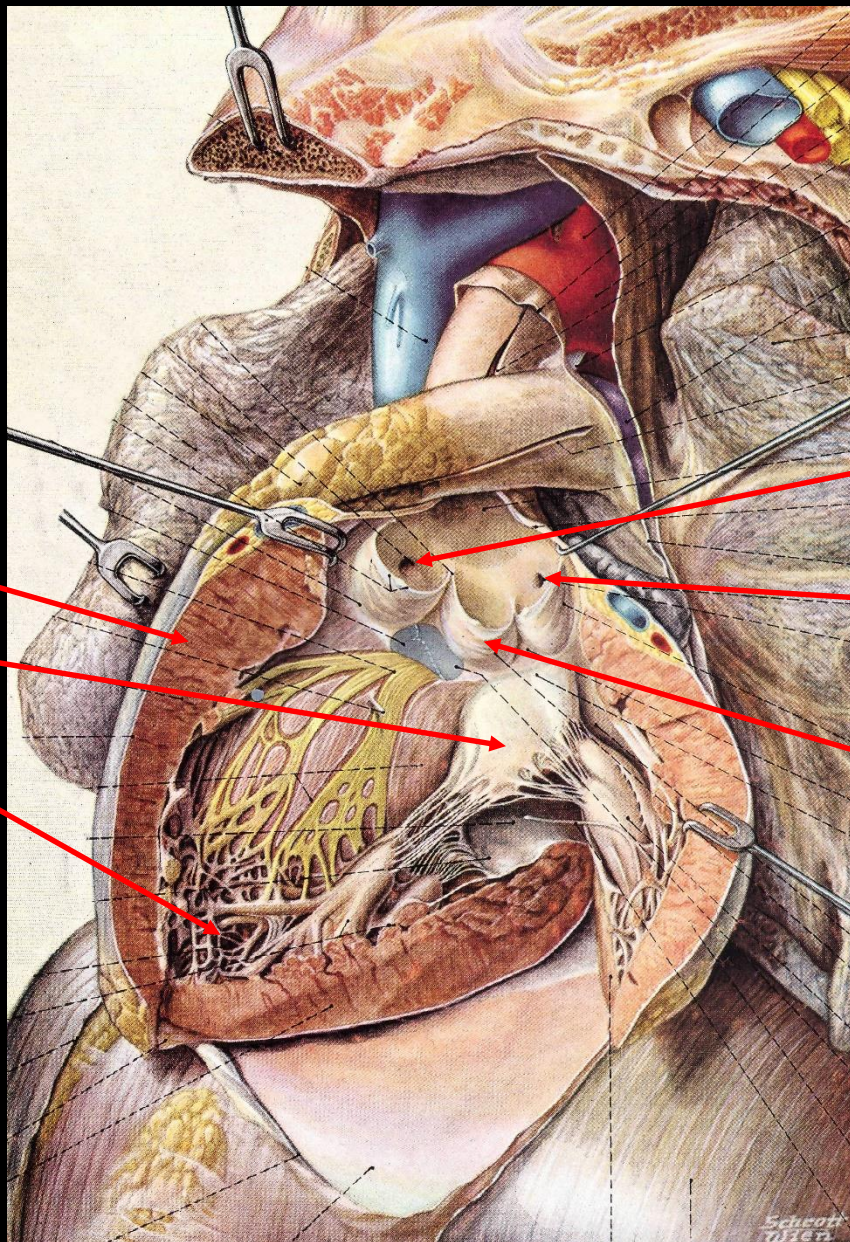
Valva mitralis

Trabeculae carneae

Arteria coronaria
dextra

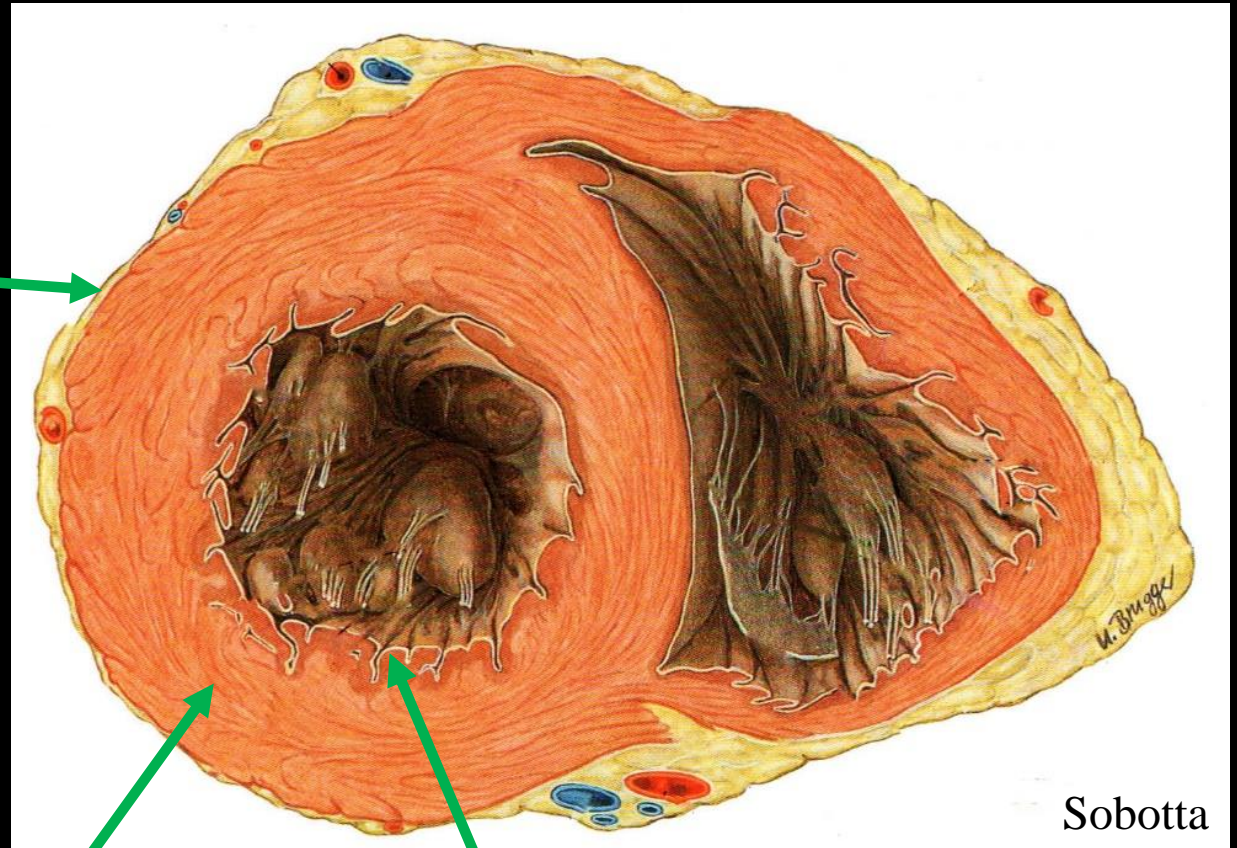
Arteria coronaria
sinistra

Valva aortae



A szív falának szerkezete

Epicardium
(*pericardium*
viscerale)

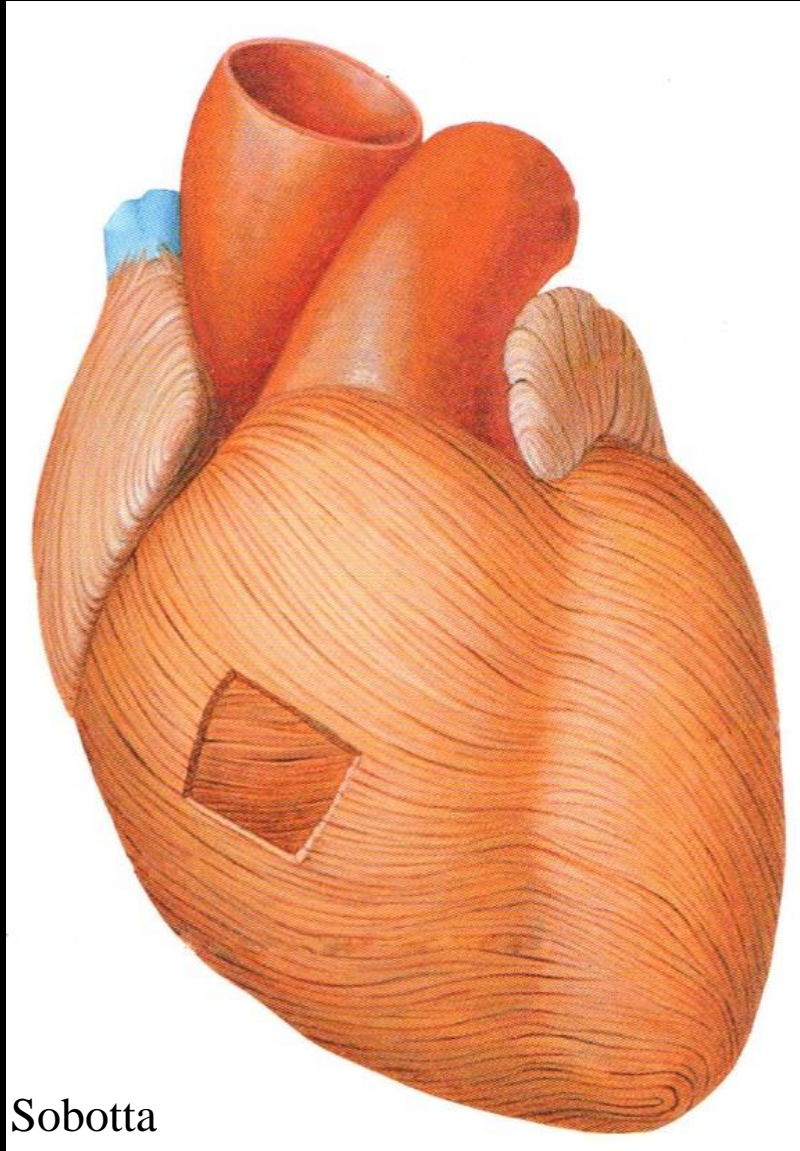


Sobotta

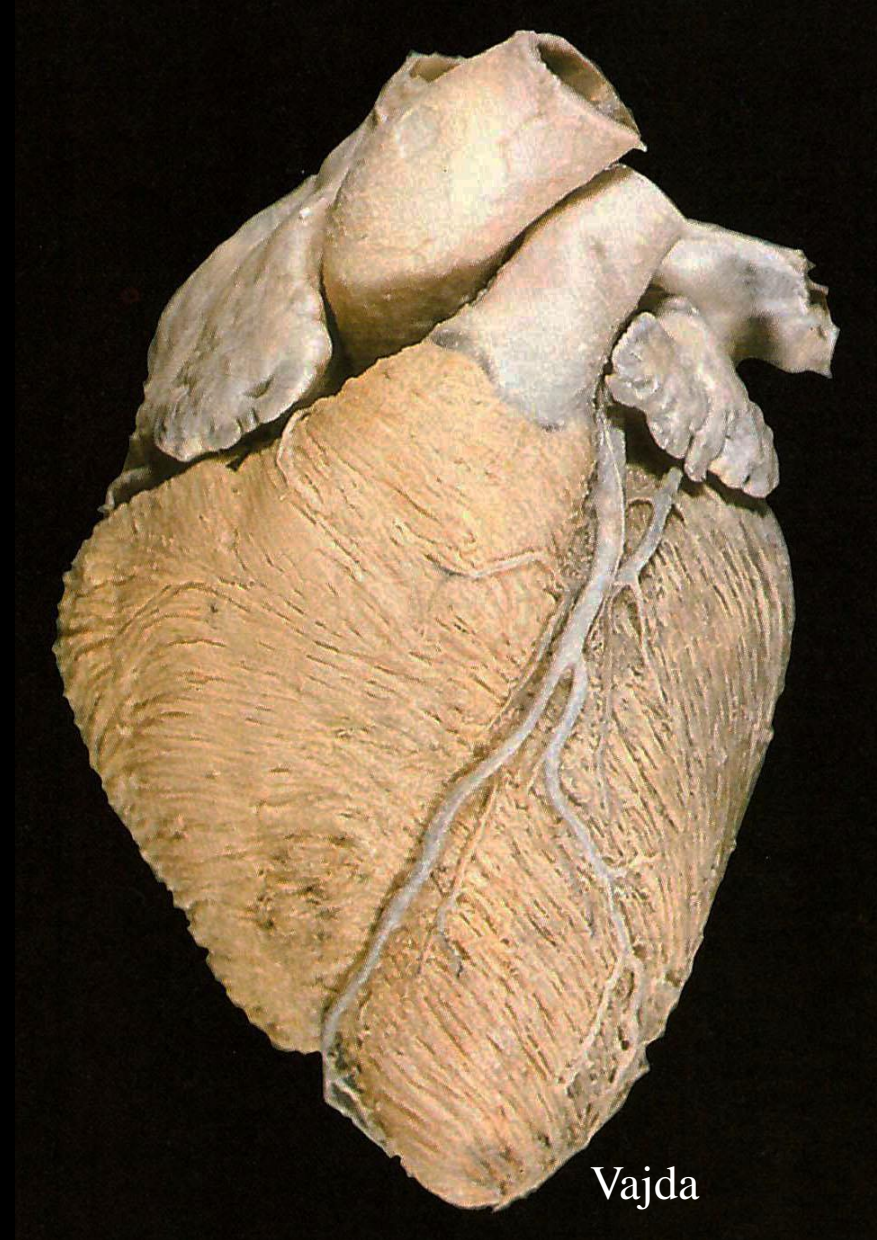
Myocardium

Endocardium

Myocardium

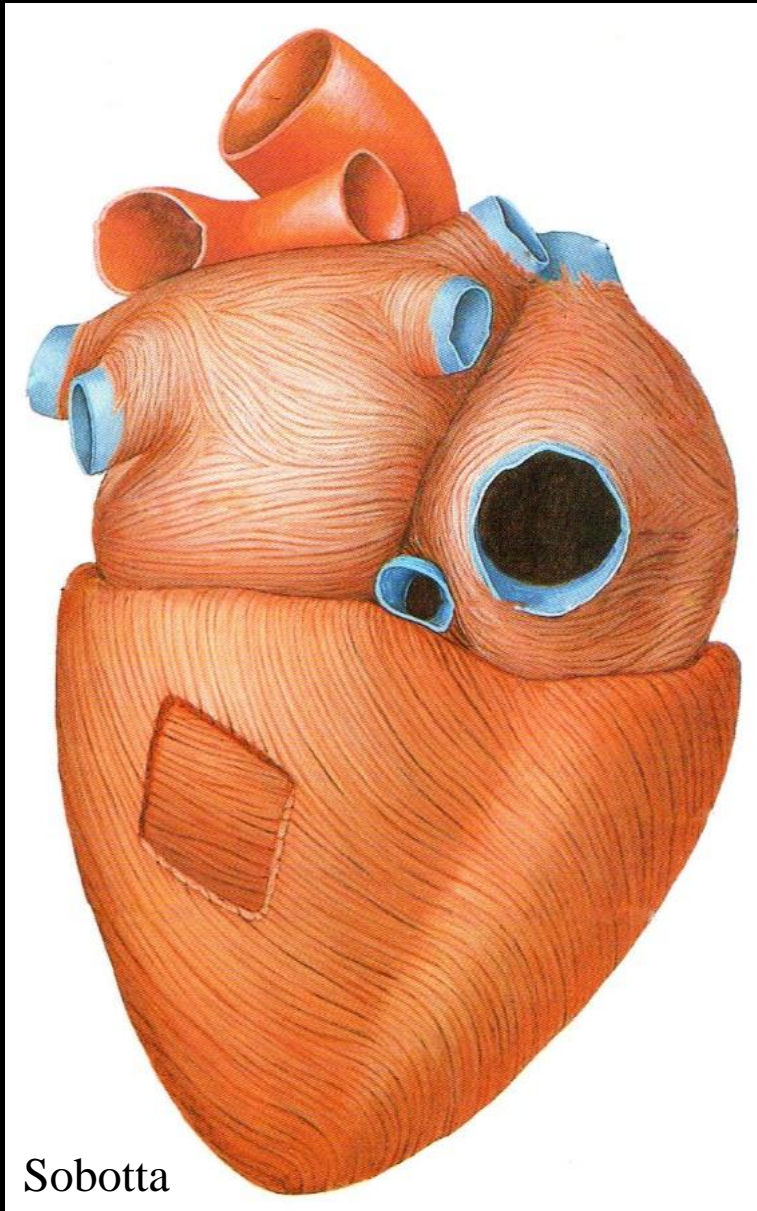


Sobotta

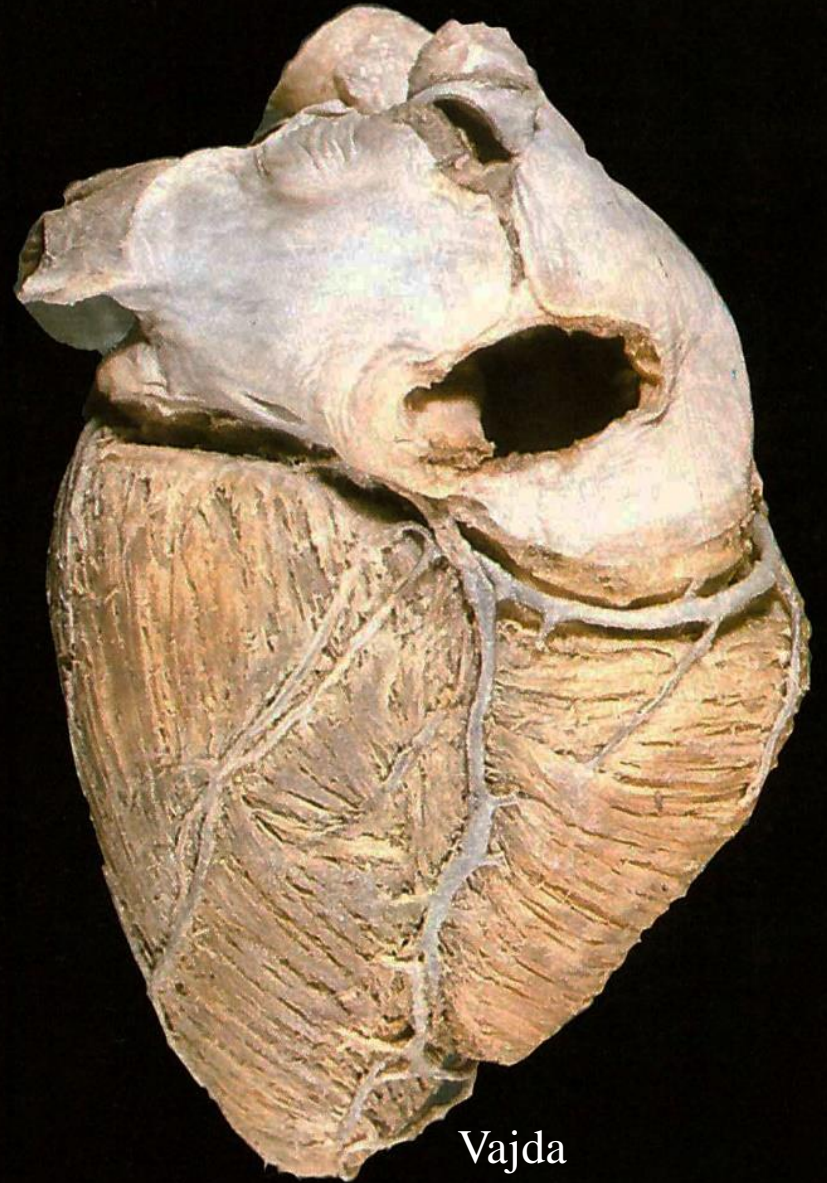


Vajda

Myocardium

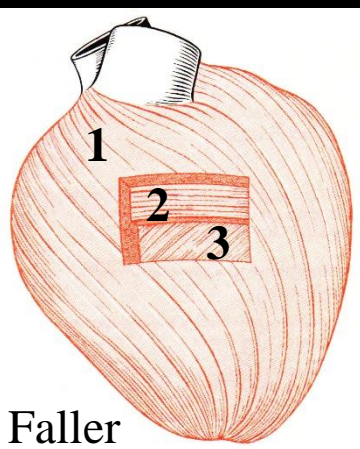


Sobotta

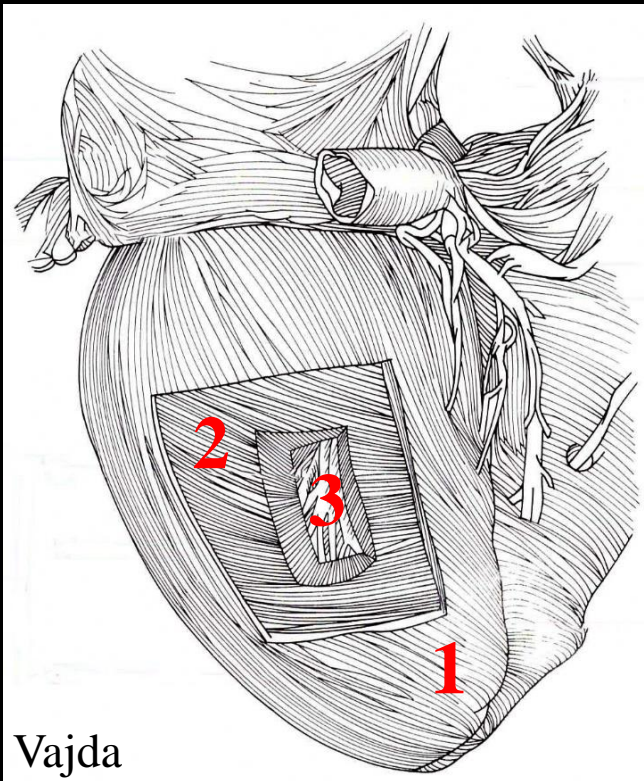


Vajda

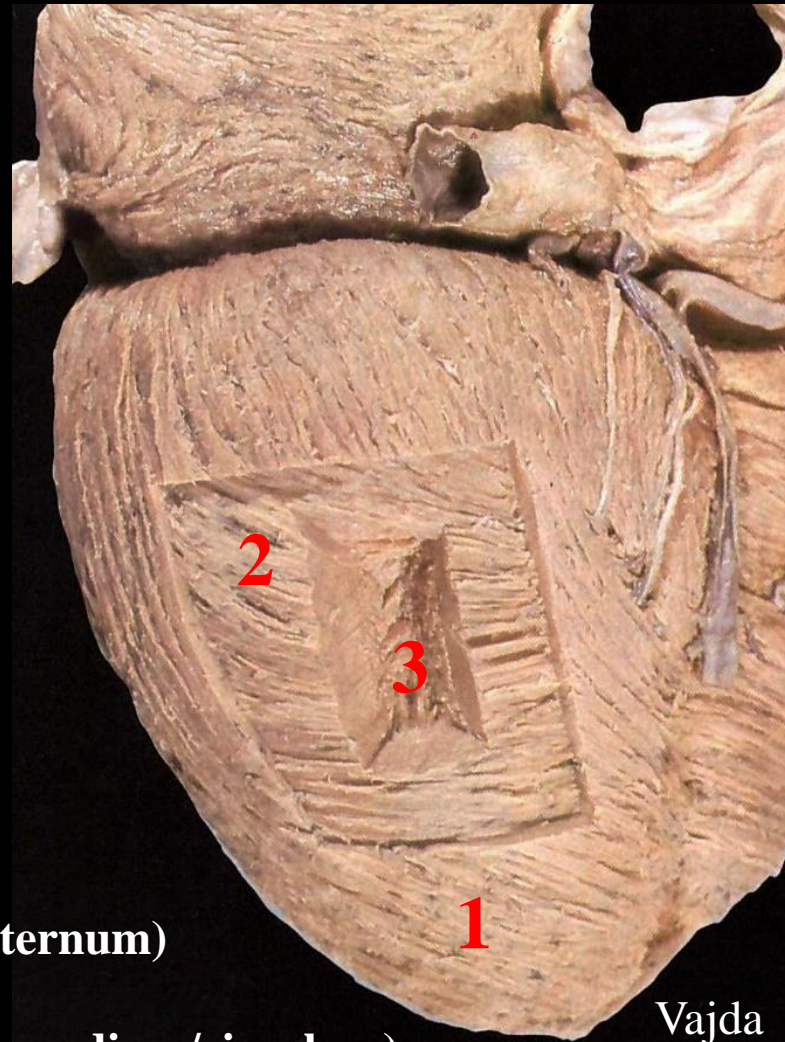
A kamrai myocardium



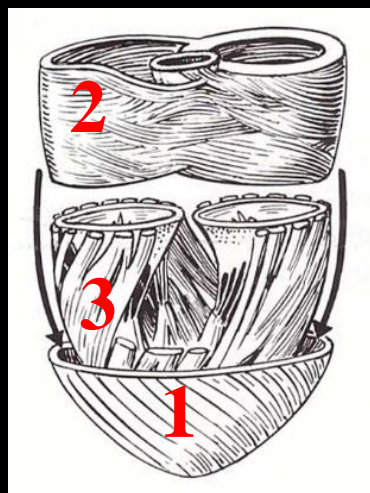
Faller



Vajda



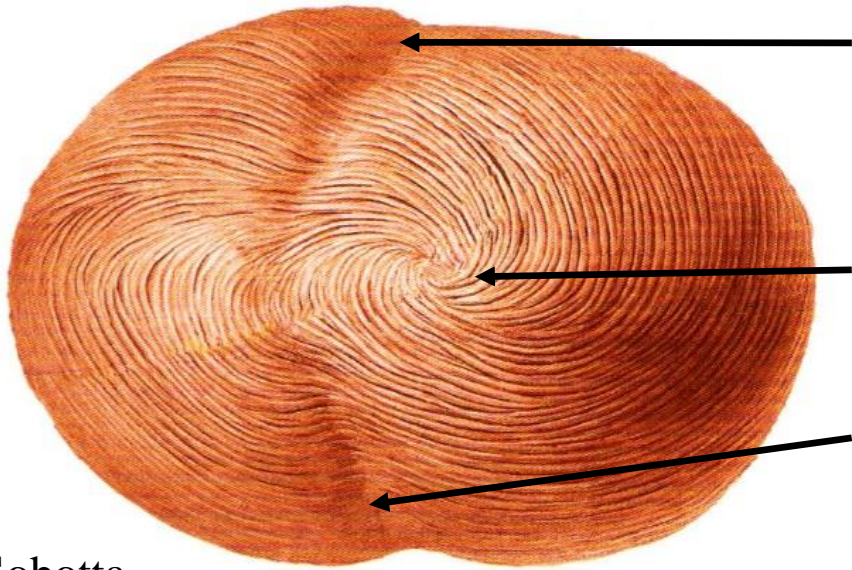
Vajda



Szentágothai

1. Külső ferde/meredeken spirális réteg (stratum externum)
2. Középső körkörös/laposan spirális réteg (stratum medium/circulare)
3. Belső hosszanti réteg (stratum internum)

Myocardium



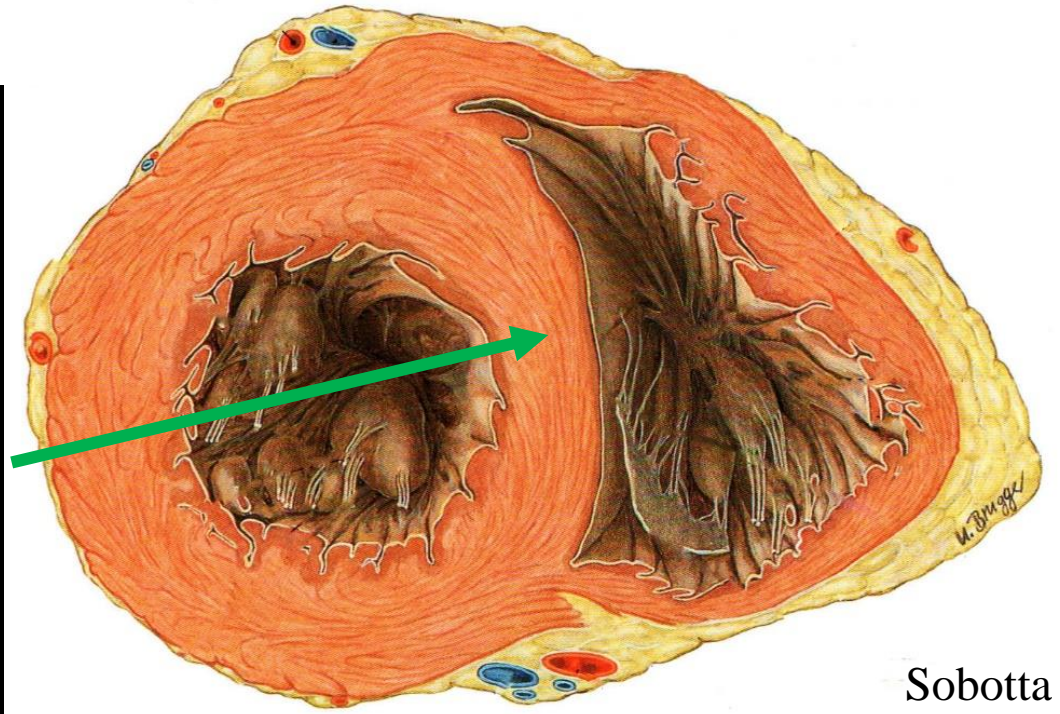
Sulcus interventricularis anterior

Vortex cordis

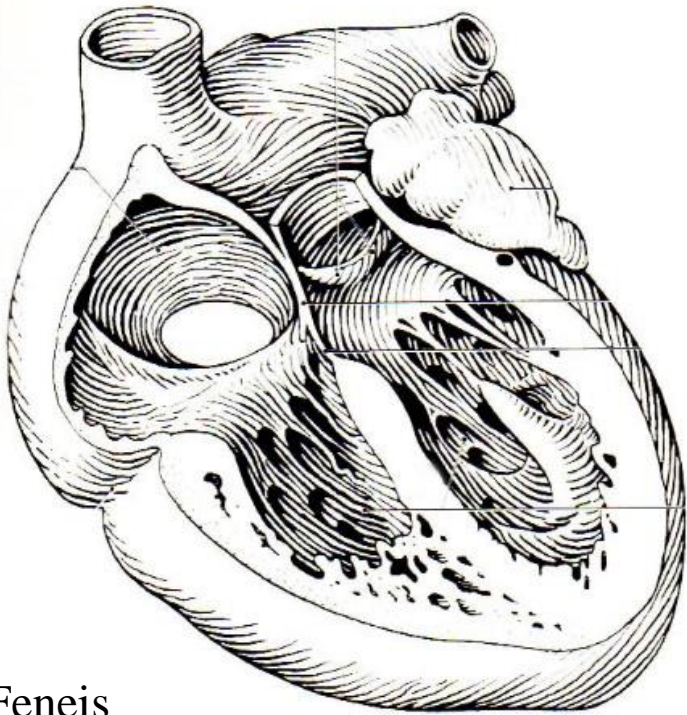
Sulcus interventricularis posterior

Sobotta

Septum interventriculare

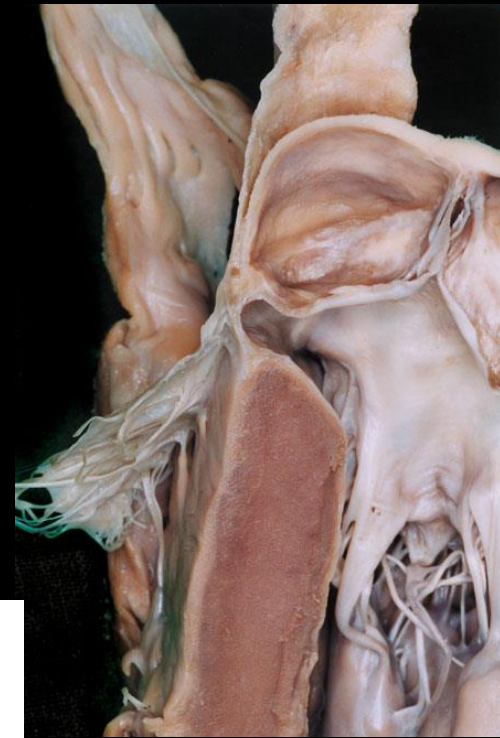


Sobotta



Feneis

Septum interventriculare



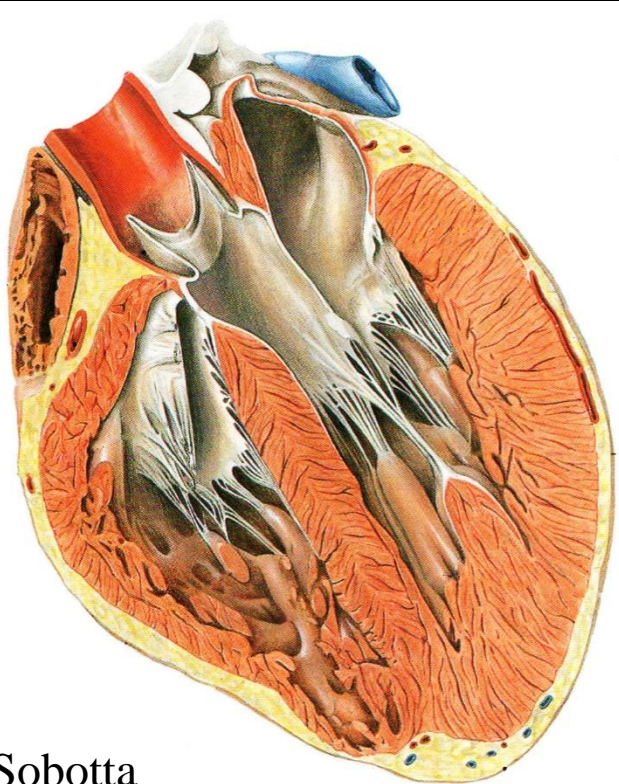
Berdajs

Septum atrioventriculare

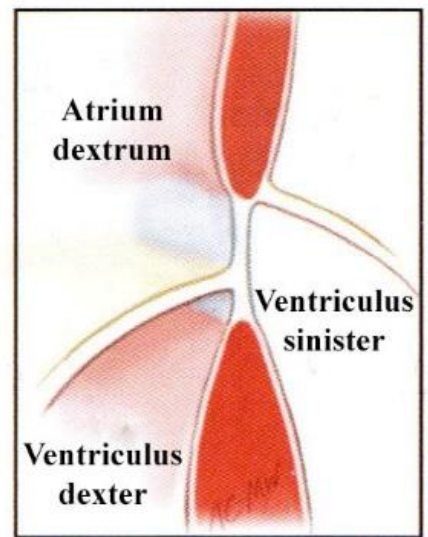
Septum interventriculare:

Pars membranacea

Pars muscularis

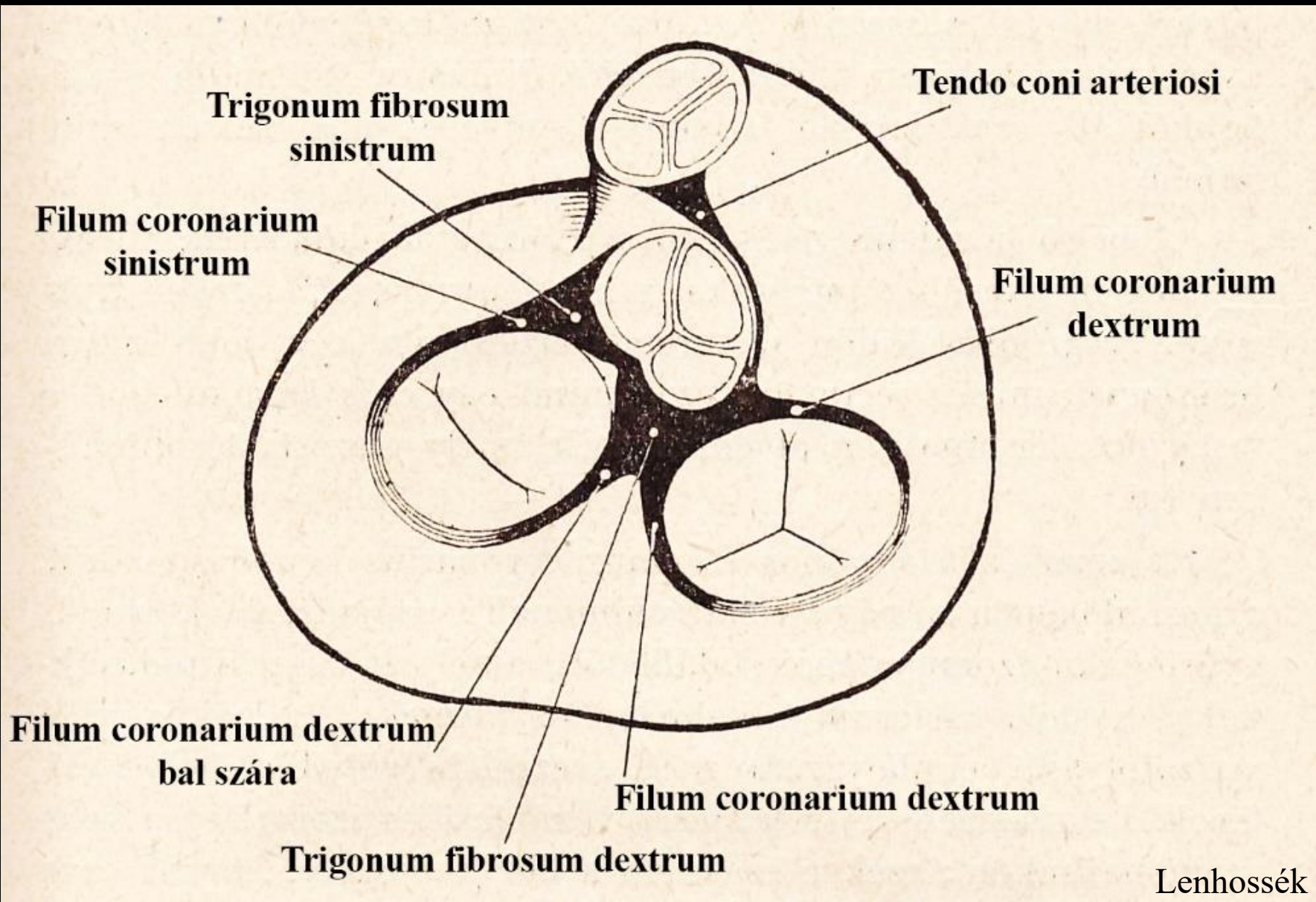


Sobotta

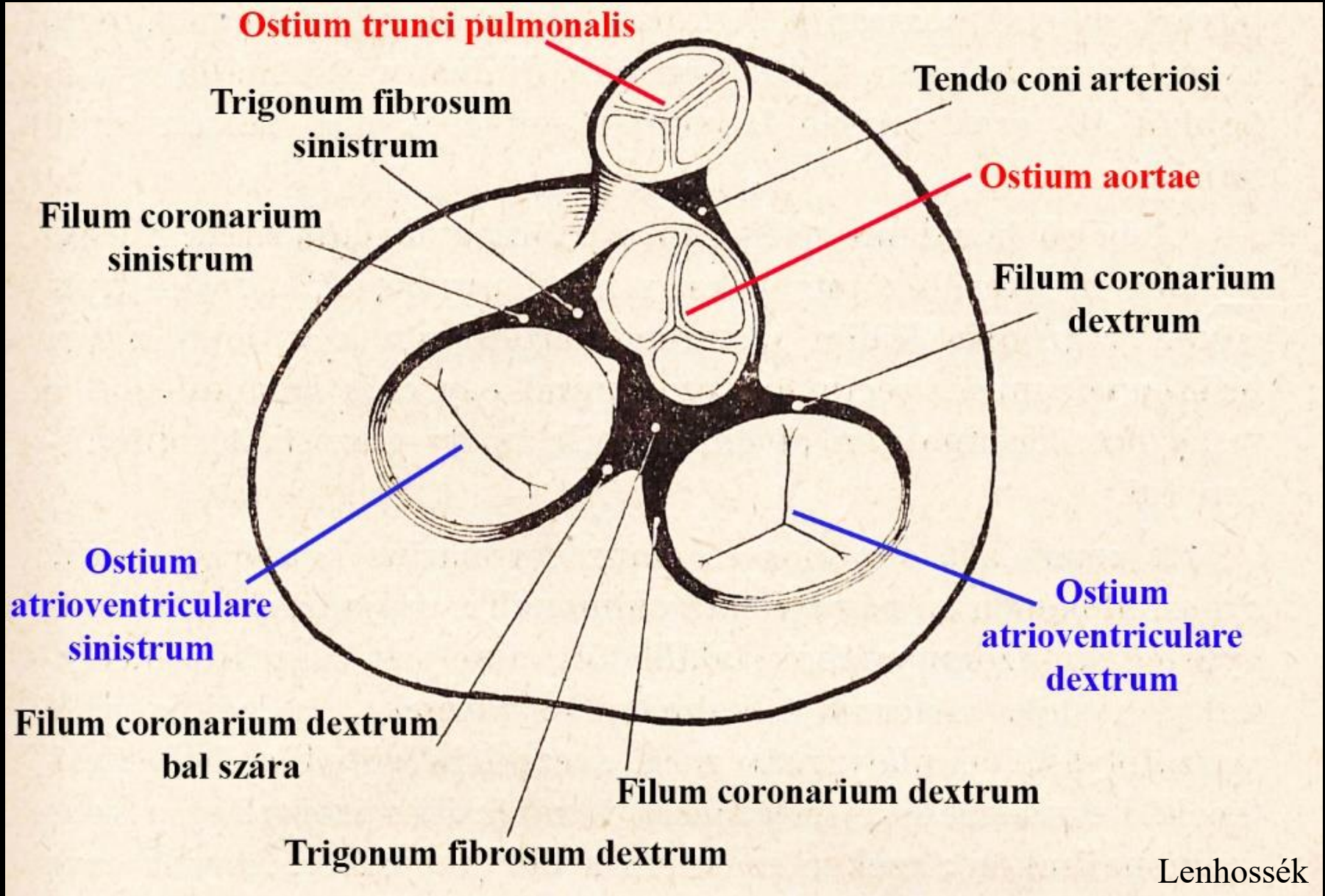


Carpentier

A szív rostos váza (anuli fibrosi)



A szív rostos váza (anuli fibrosi)



Szívbillentyűk

Vitorlás (cuspidalis) billentyűk:

→vénás szájadékokban

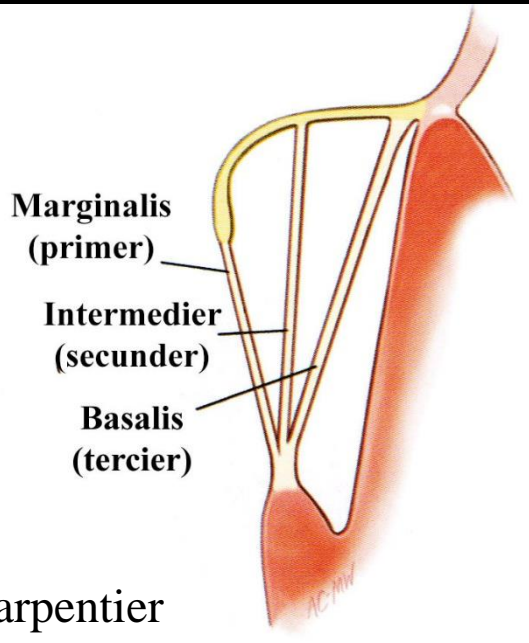
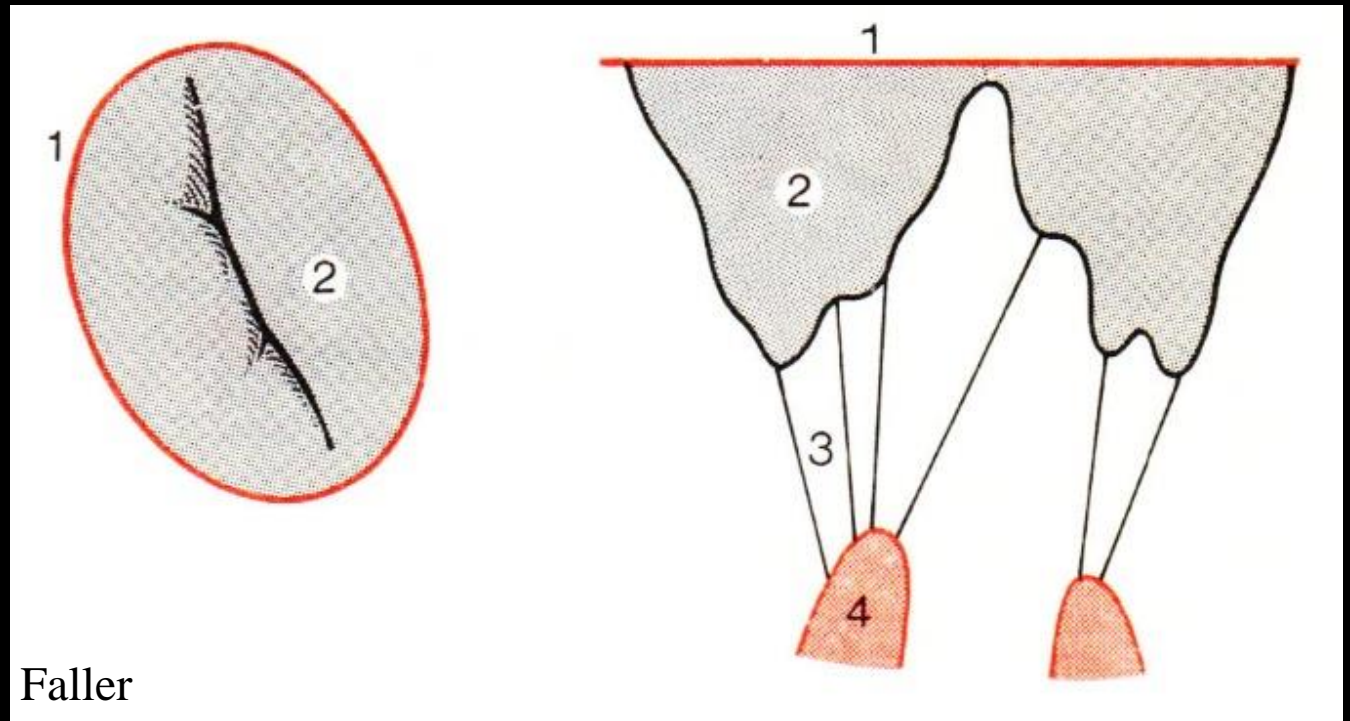
- valva atrioventricularis dextra, valva tricuspidalis
- valva atrioventricularis sinistra, valva bicuspidalis, valva mitralis

Tasakos (semilunaris) billentyűk:

→artériás szájadékokban

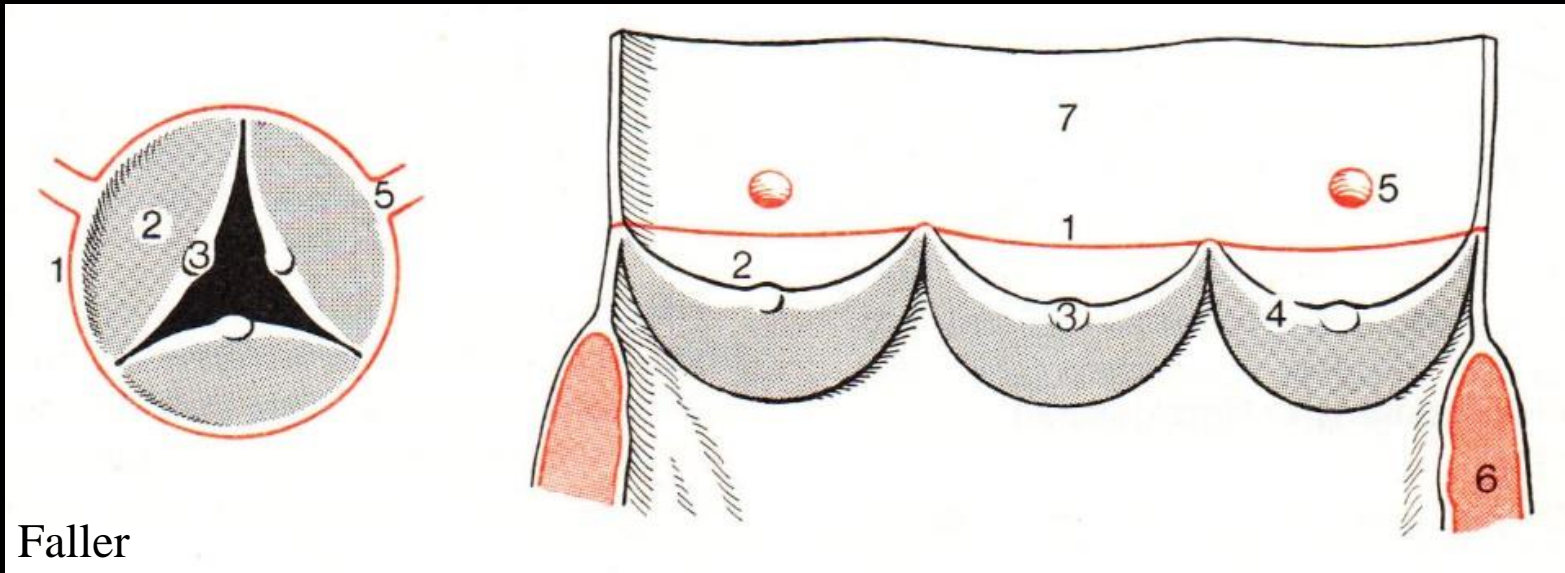
- valva trunci pulmonalis
- valva aortae

A vitorlás billentyűk általános felépítése

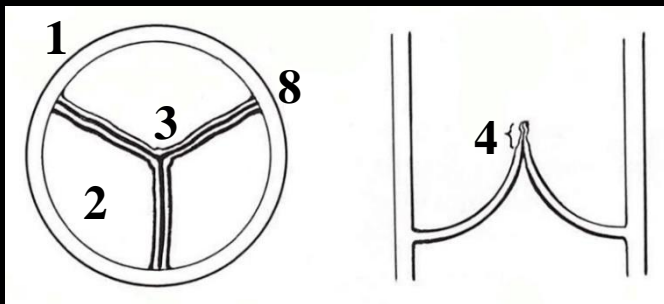


1. Anulus fibrosus (rostos váz/gyűrű)
2. Cuspis (vitorla)
3. Chordae tendineae (ínhúrok)
4. Musculus papillaris (szemölcsizom)

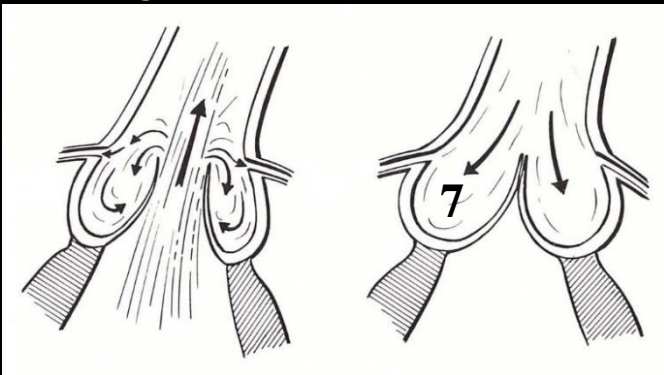
A tasakos billentyűk általános felépítése



Faller

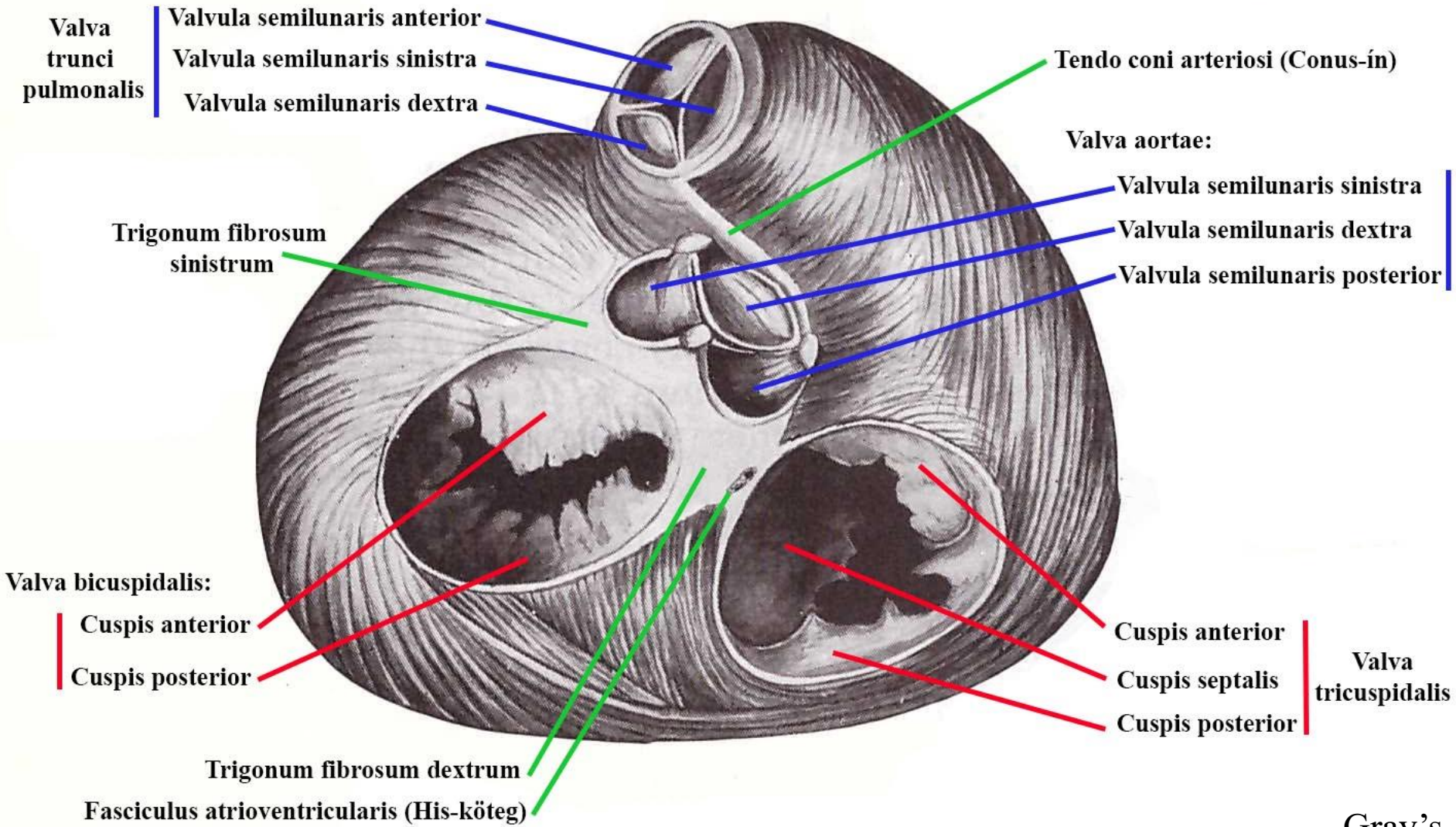


Szentágothai

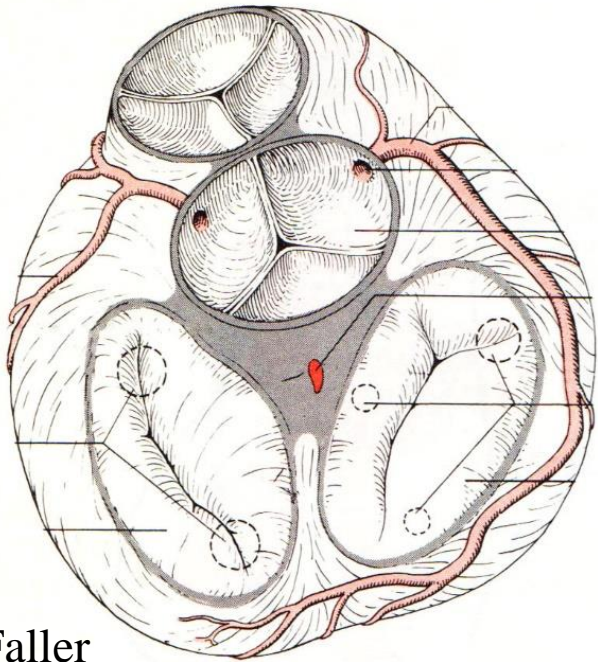


1. Anulus fibrosus
2. Valvula semilunaris: *pars flaccida*
pars tensa
3. Nodulus valvulae semilunaris
4. Lunula valvulae semilunaris
5. Arteria coronaria
6. Kamrafal
7. Sinus aortae
8. Commissura valvulae semilunaris

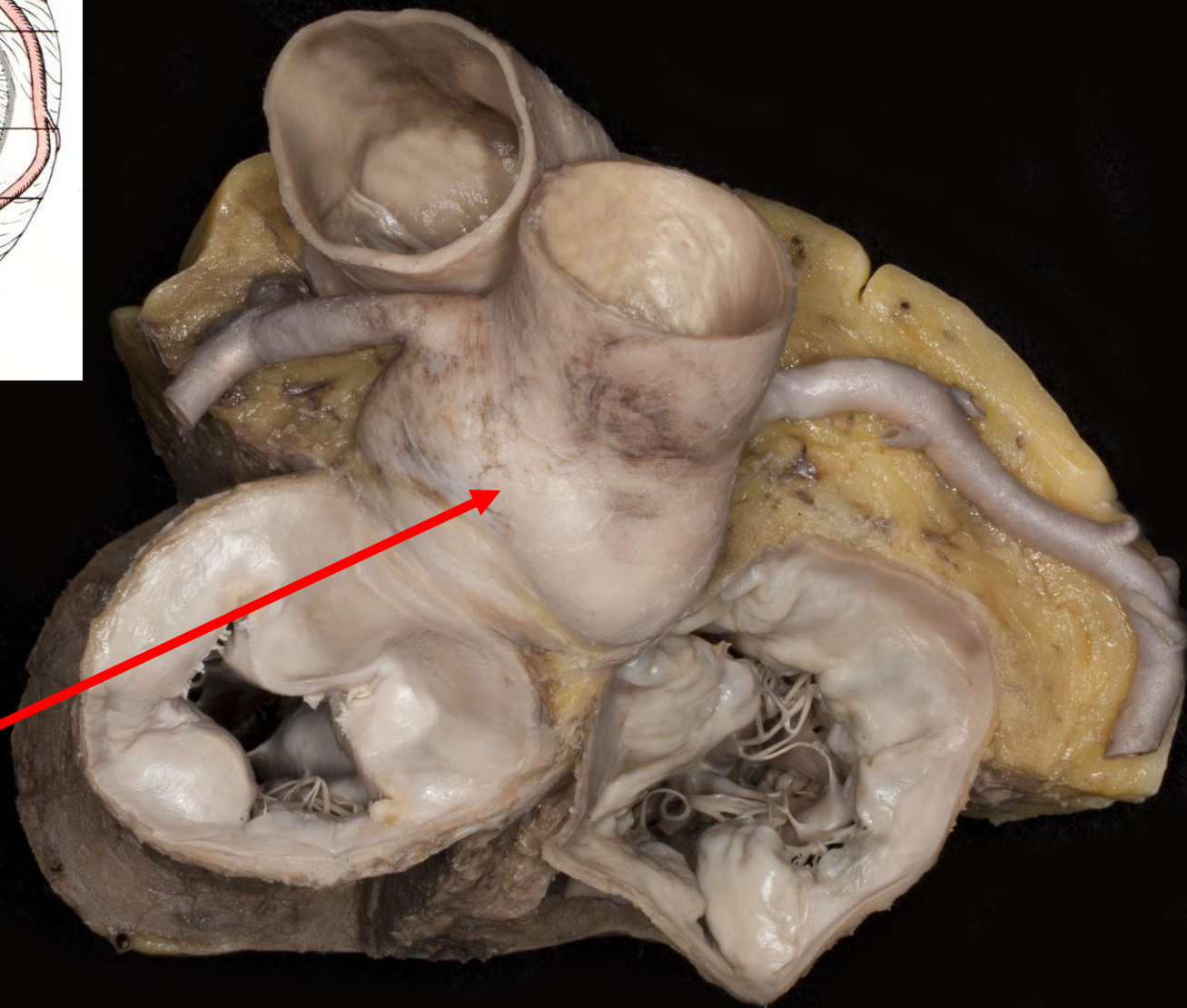
Szívbillentyűk



Szívbillentyűk



Faller



Bulbus aortae

Valva aortae

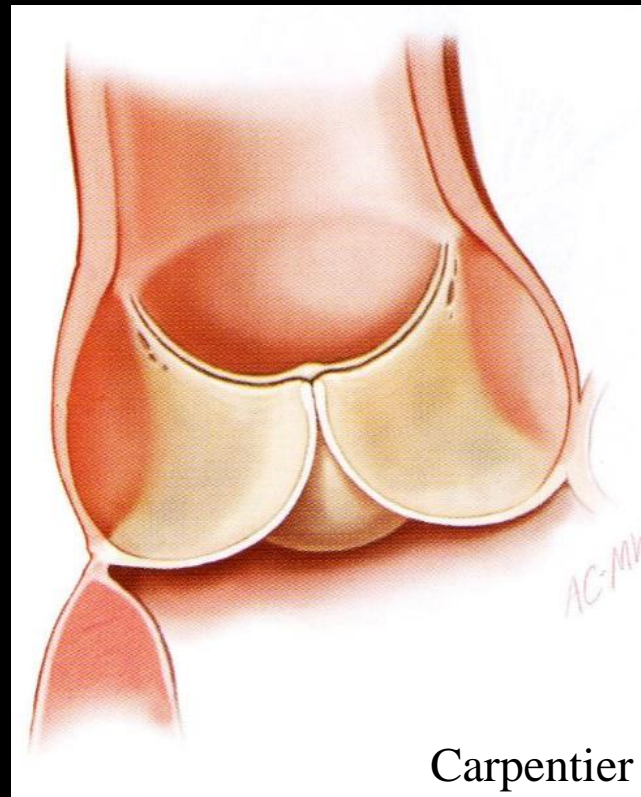


Valvula semilunaris dextra
(*Valvula coronaria dextra*)

Valvula semilunaris sinistra
(*Valvula coronaria sinistra*)

Valvula semilunaris posterior
(*Valvula non coronaria*)

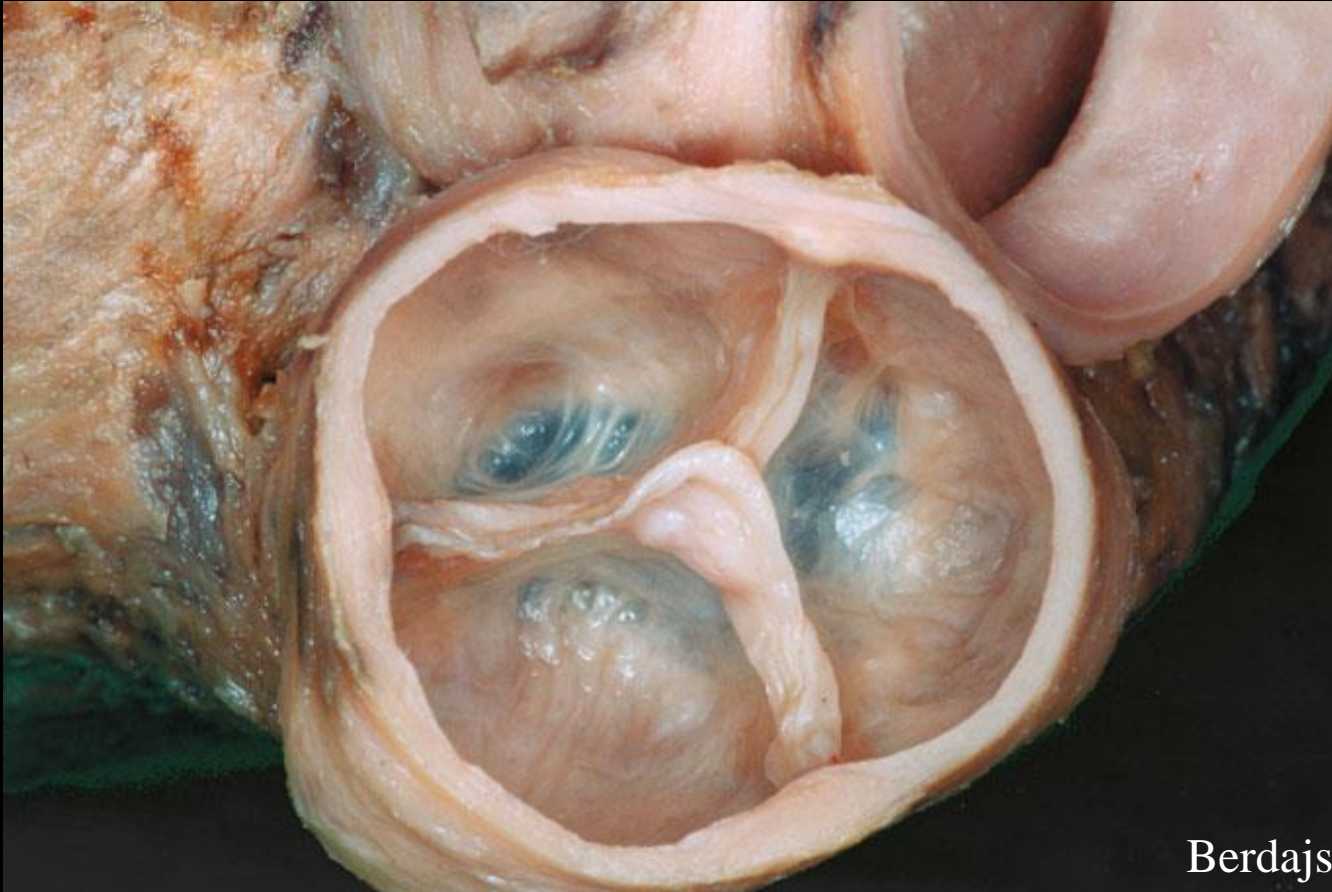
Berdajs



Sinus aortae
(**Valsalva**)

Bulbus aortae

Valva trunci pulmonalis



Berdajs

Valvula semilunaris dextra

Valvula semilunaris sinistra

Valvula semilunaris anterior

Valva mitralis

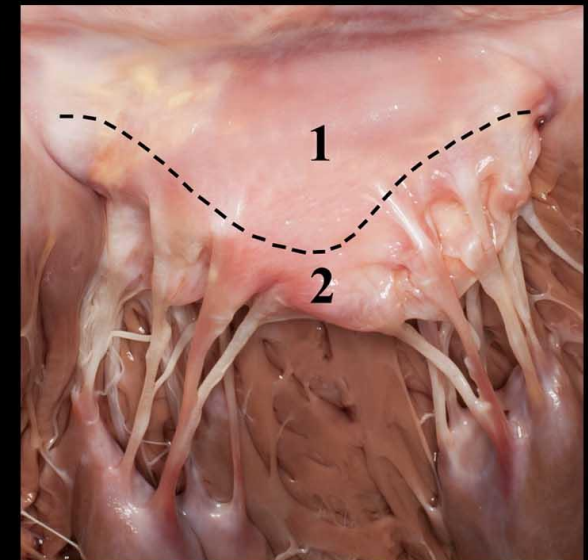
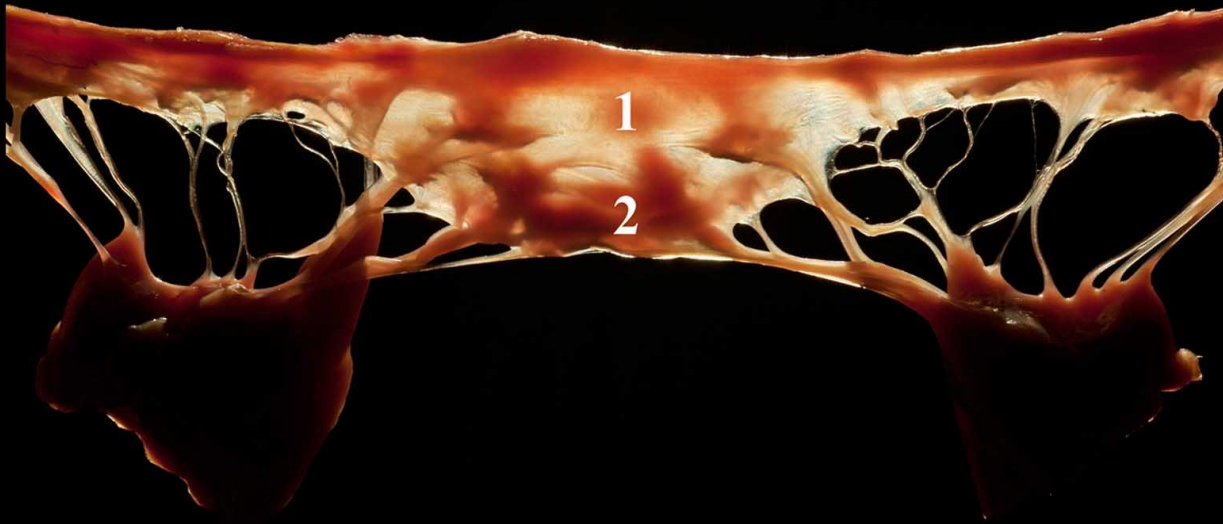
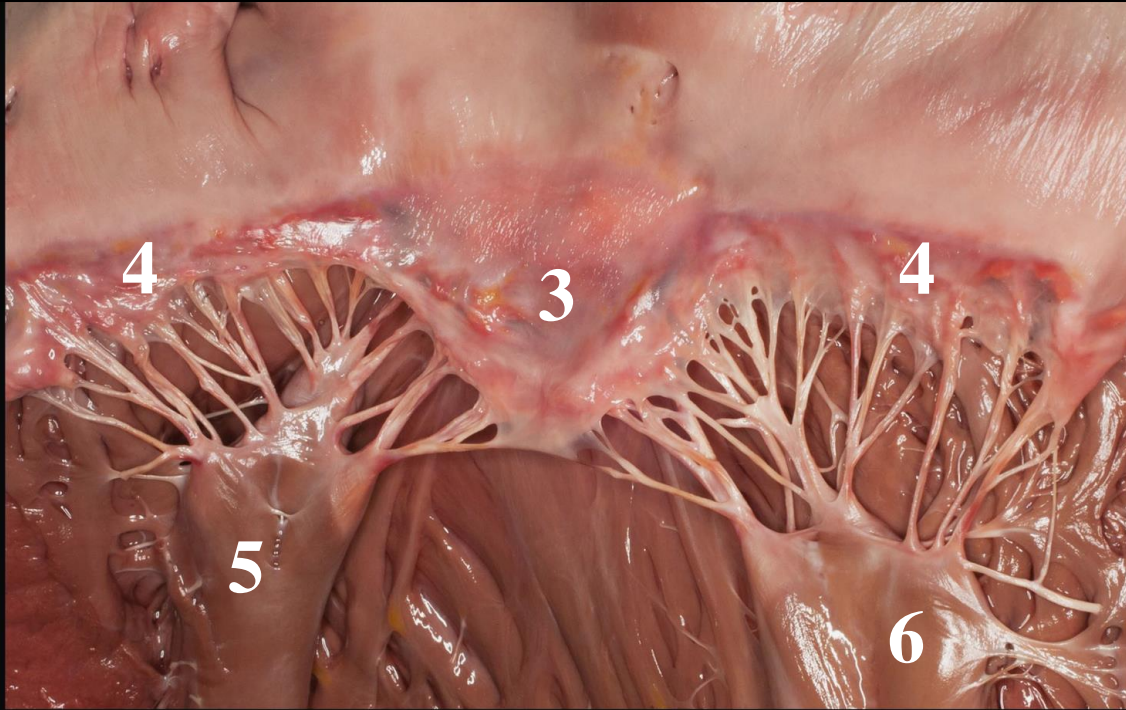
3. Cuspis anterior

4. Cuspis posterior

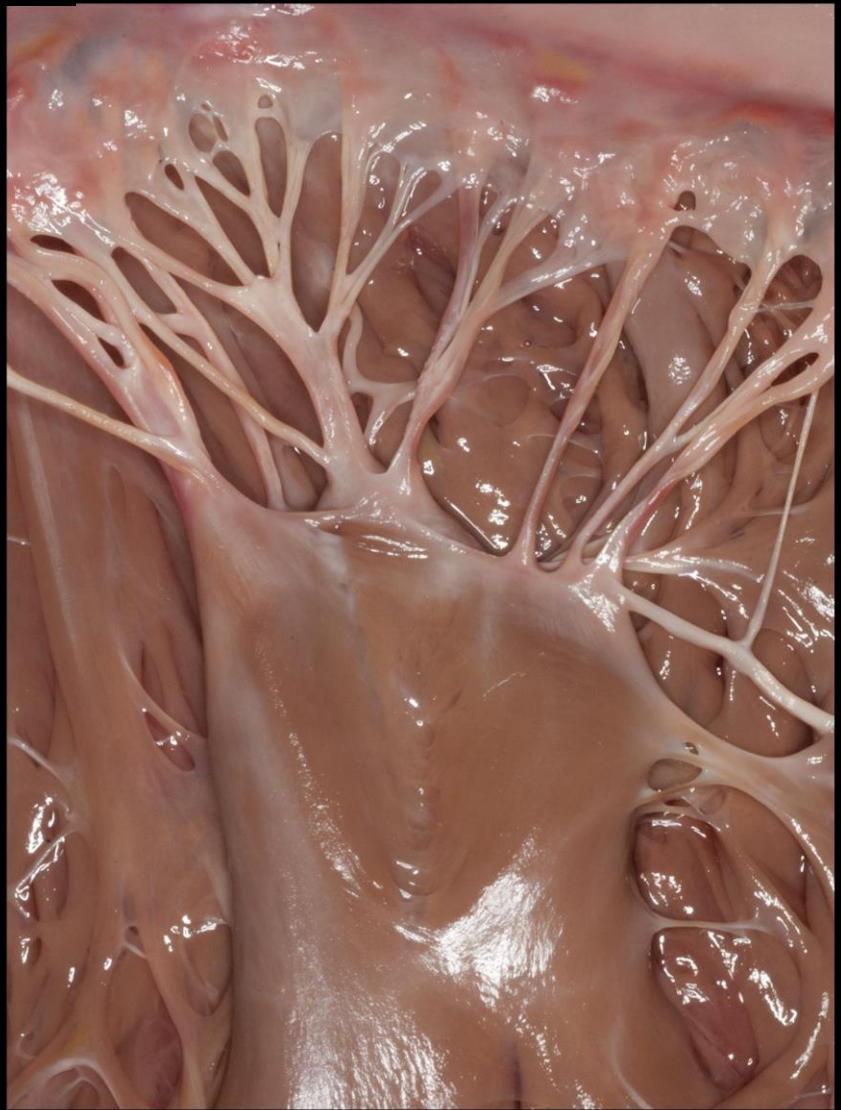
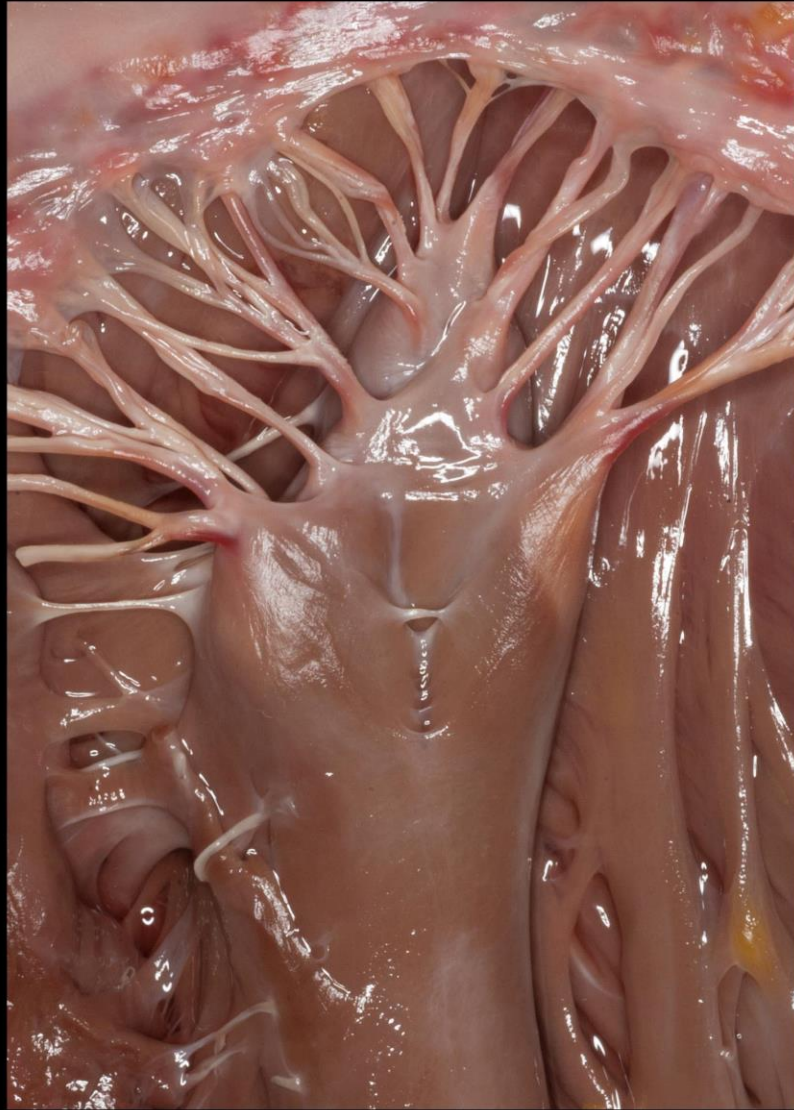
Chordae tendineae

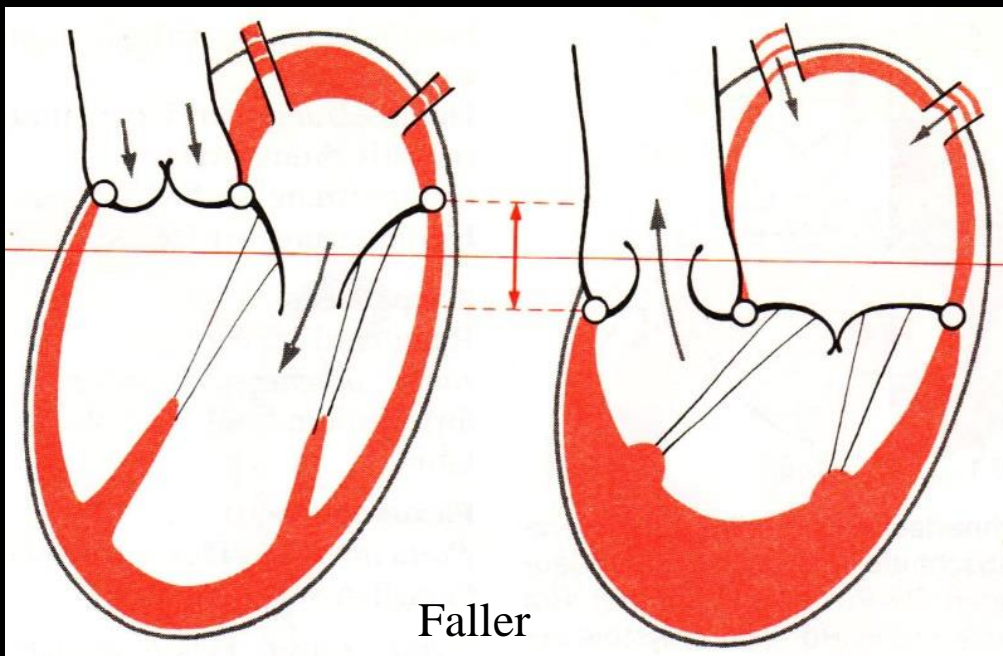
5. M. papillaris anterior

6. M. papillaris posterior



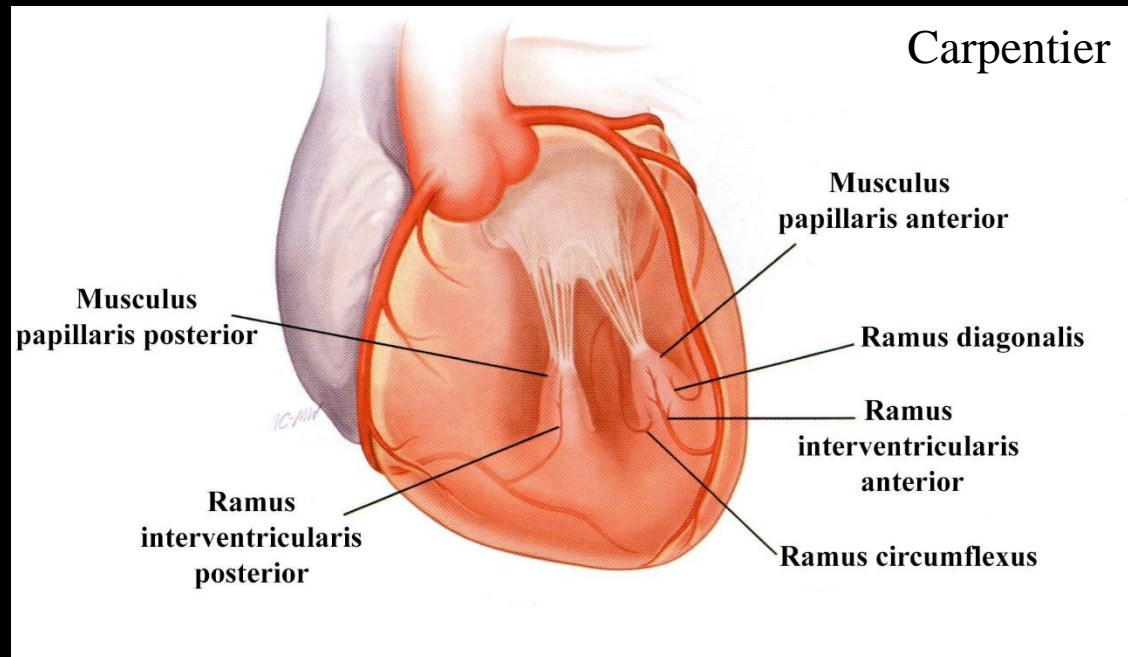
A szemölcssizmok variabilitása



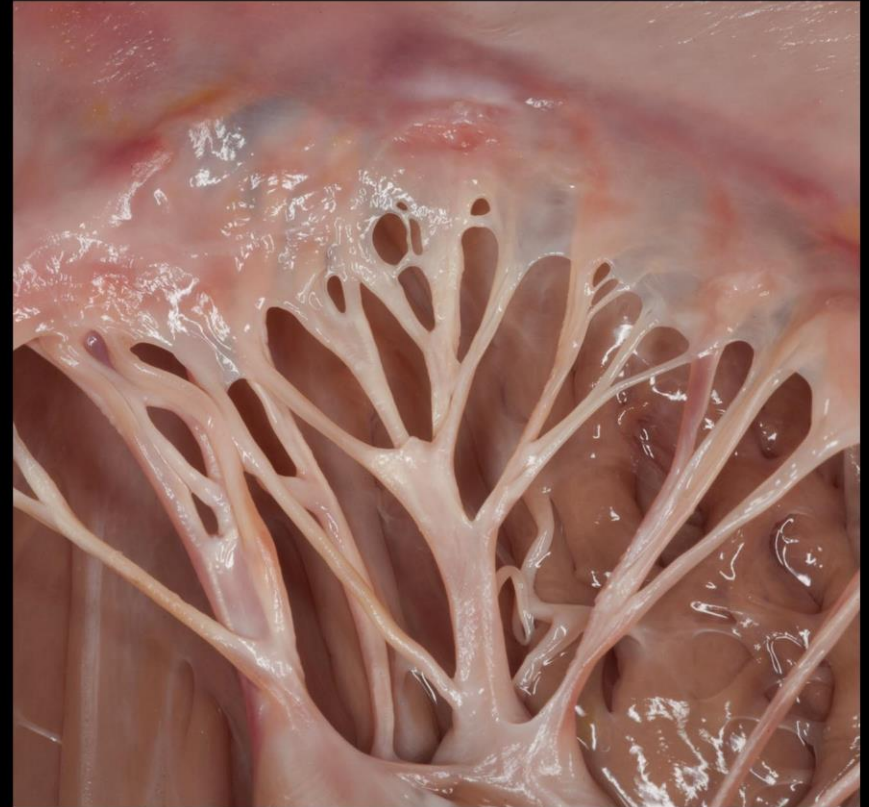
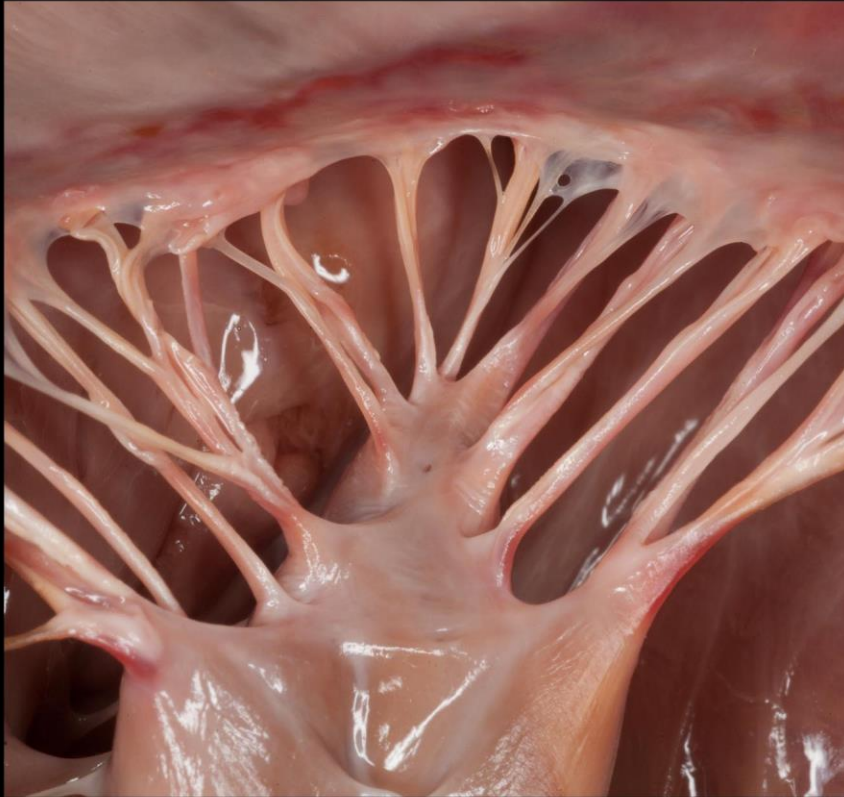


A szemölcsizmok kontrakciója

A szemölcsizmok vérellátása



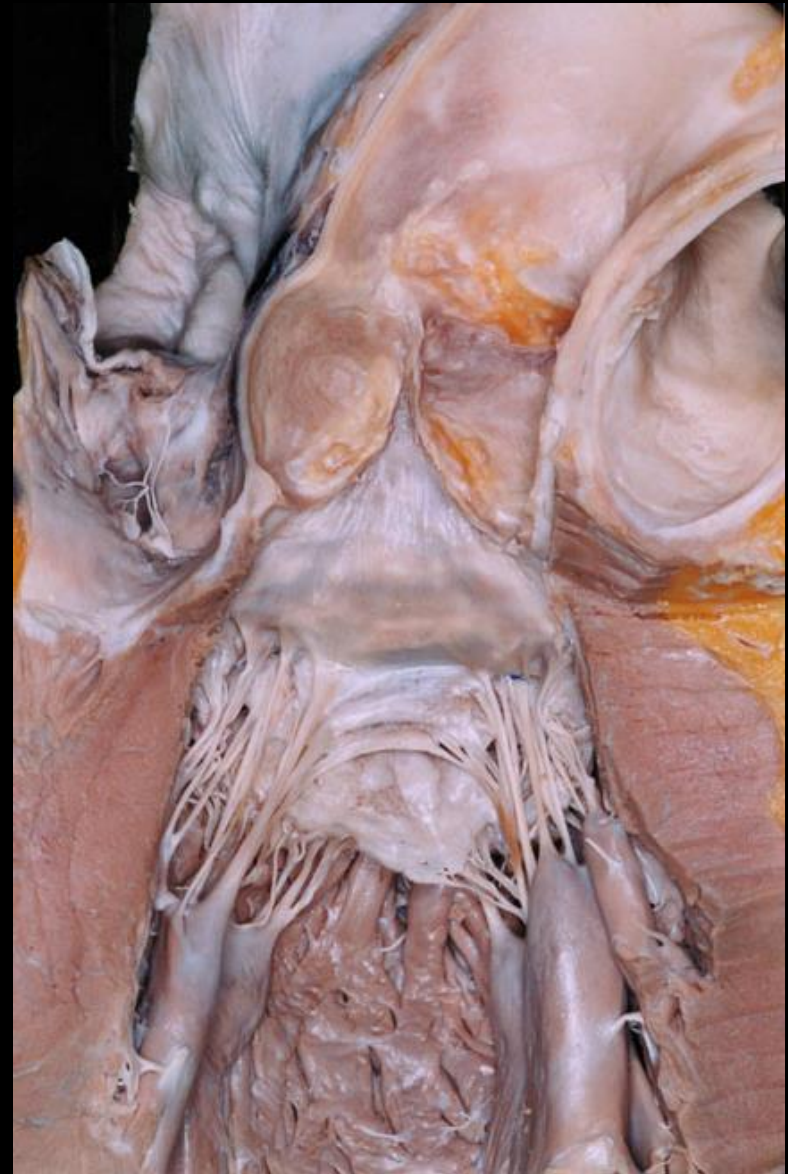
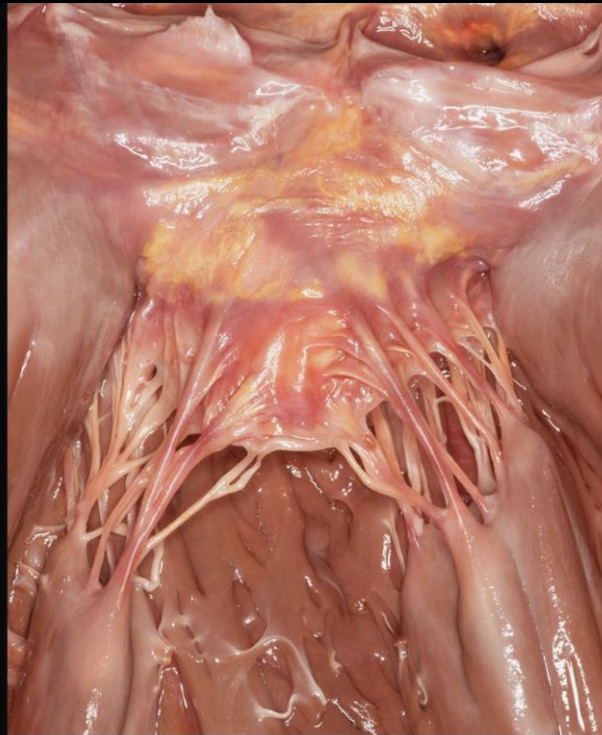
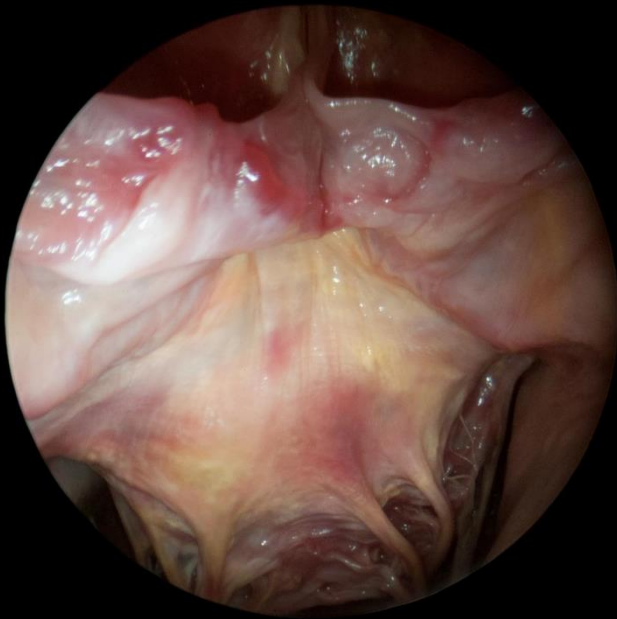
A mitralis billentyű commissuralis régiója



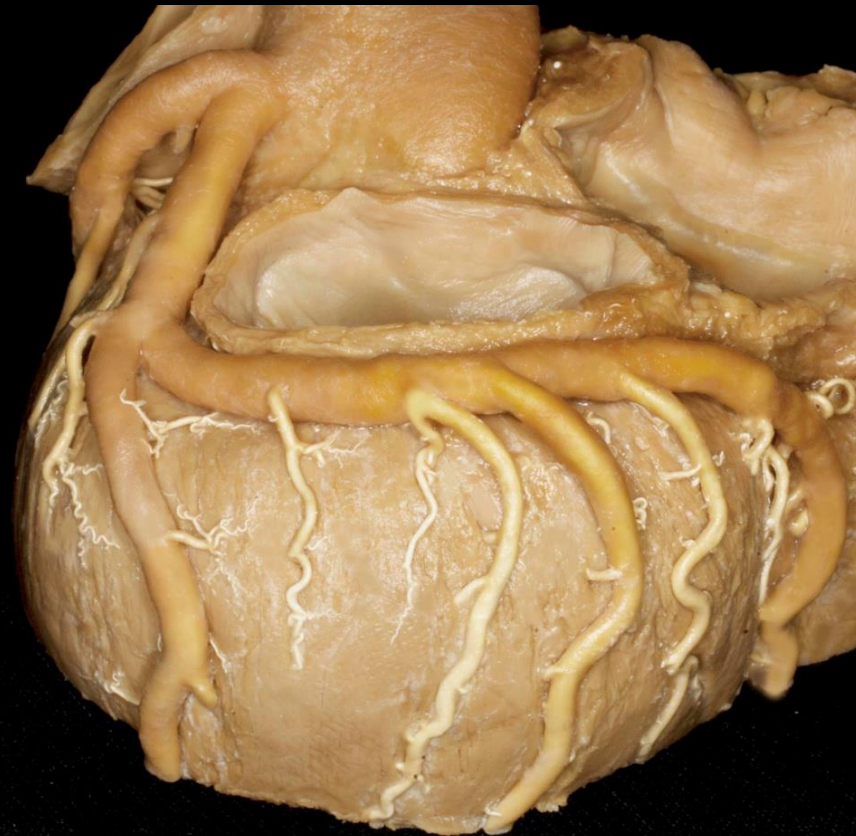
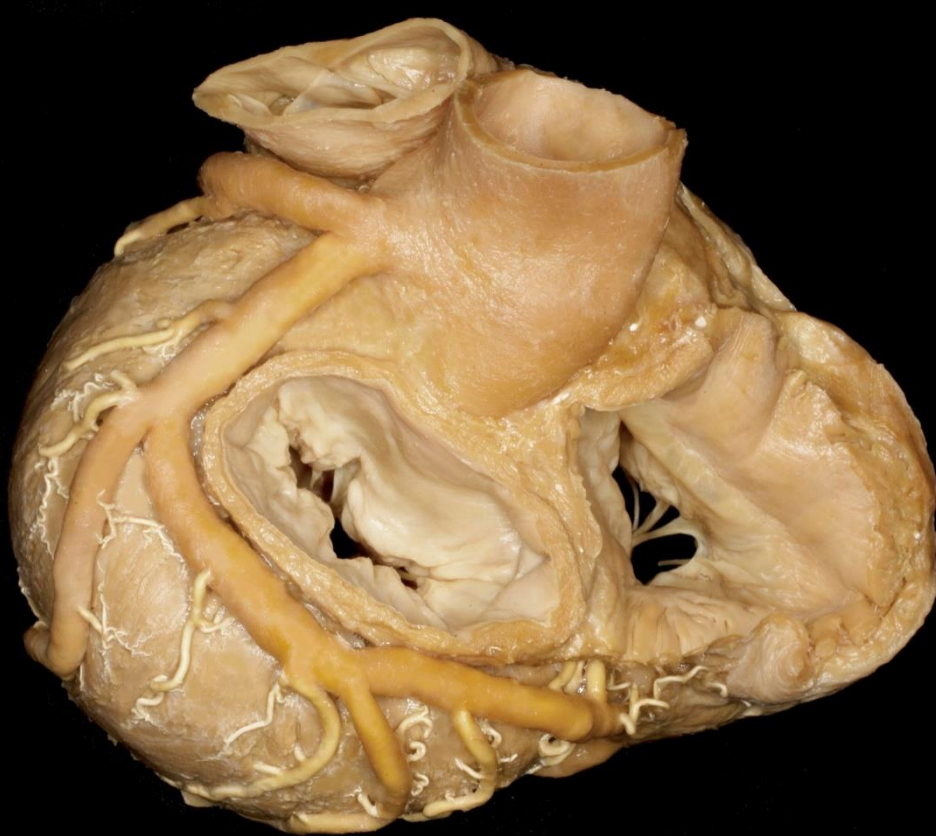
Cuspis commissuralis

- anterolateralis
- posteromedialis

Az aortabillentyű és a mitralis billentyű térbeli viszonya



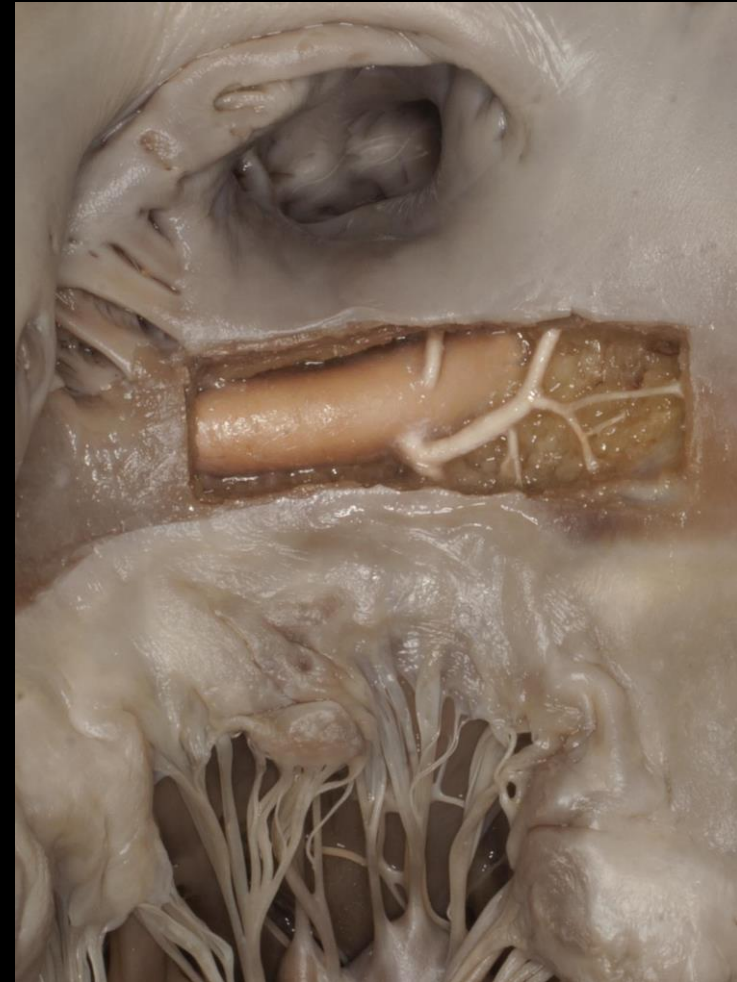
A mitralis billentyű és koszorúerek térbeli viszonya



A mitralis billentyű anulus fibrosusának környezete



A mitralis billentyű és a ramus circumflexus térbeli viszonya



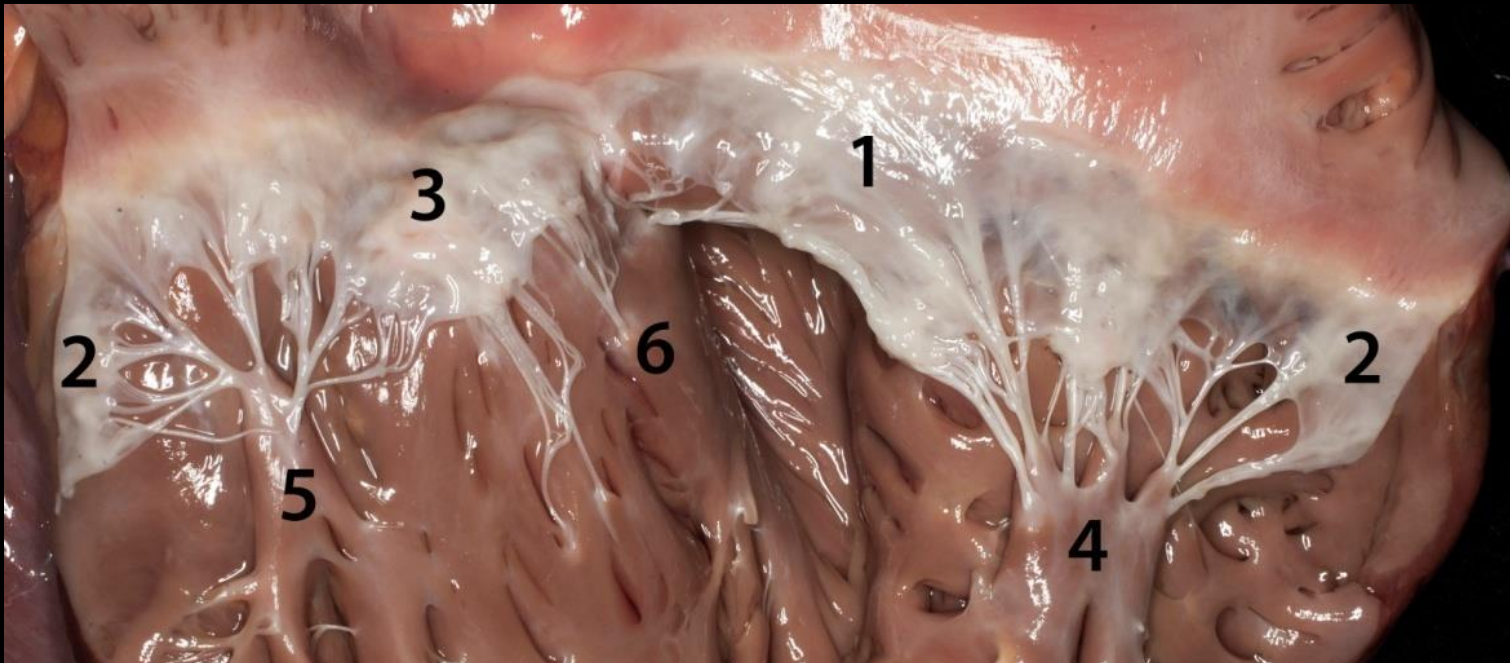
Valva tricuspidalis

1. Cuspis anterior
2. Cuspis posterior
3. Cuspis septalis



Chordae tendineae

4. M. papillaris anterior
5. M. papillaris posterior
6. M. Papillaris septalis



Valva tricuspidalis



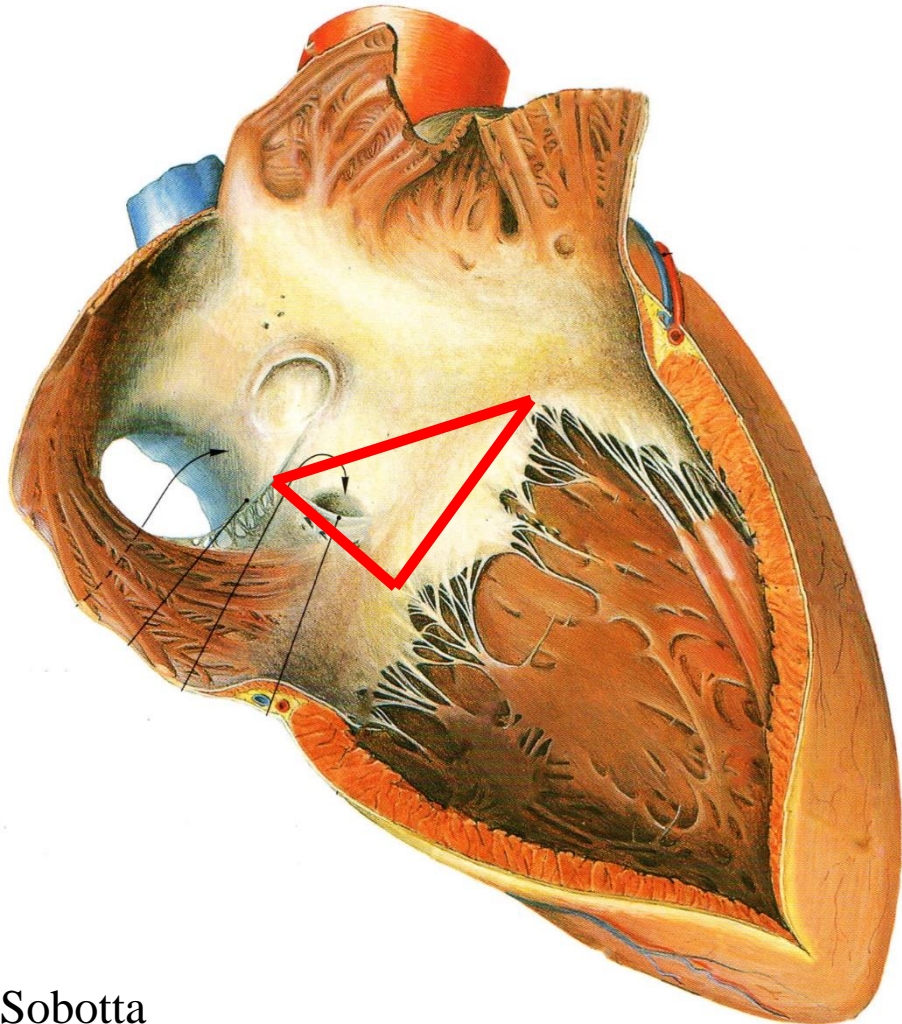
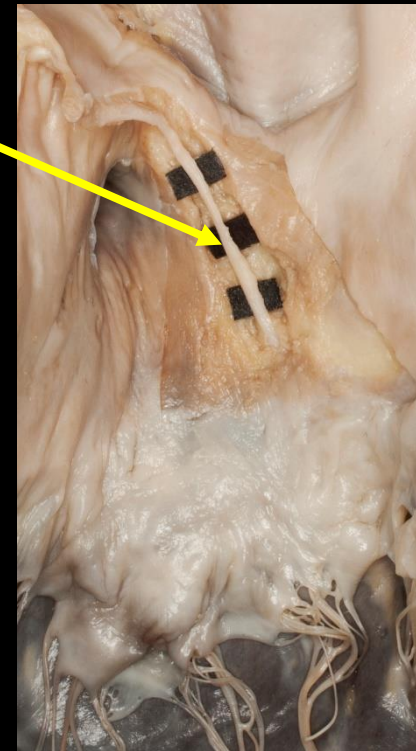
Berdajs



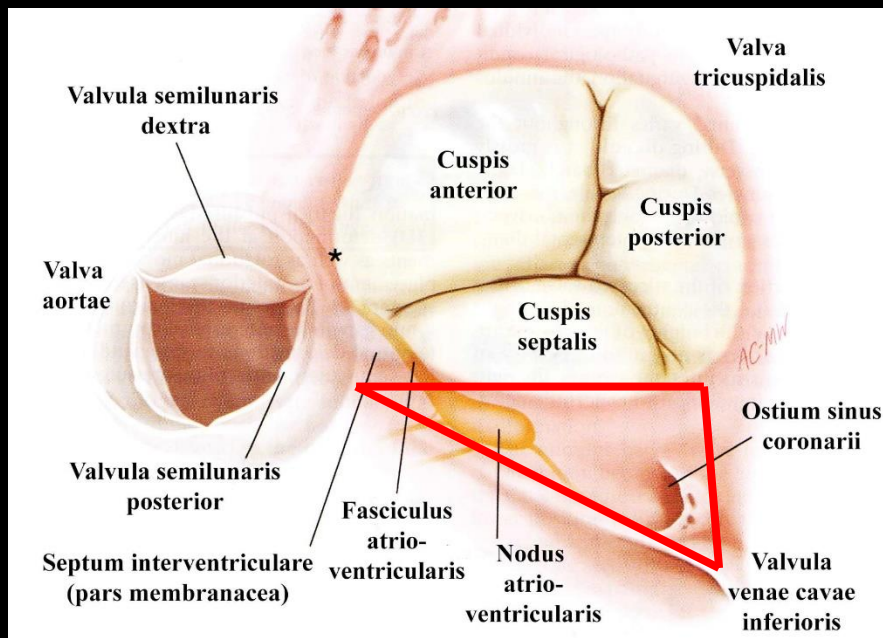
Trabecula septomarginalis

A Koch-háromszög és a nodus atrioventricularis

Todaro-féle ín



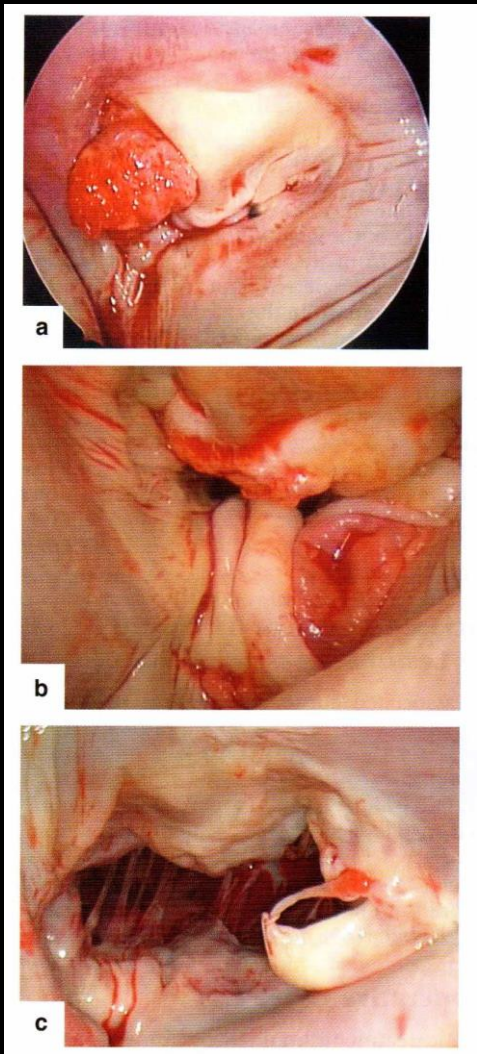
Carpentier



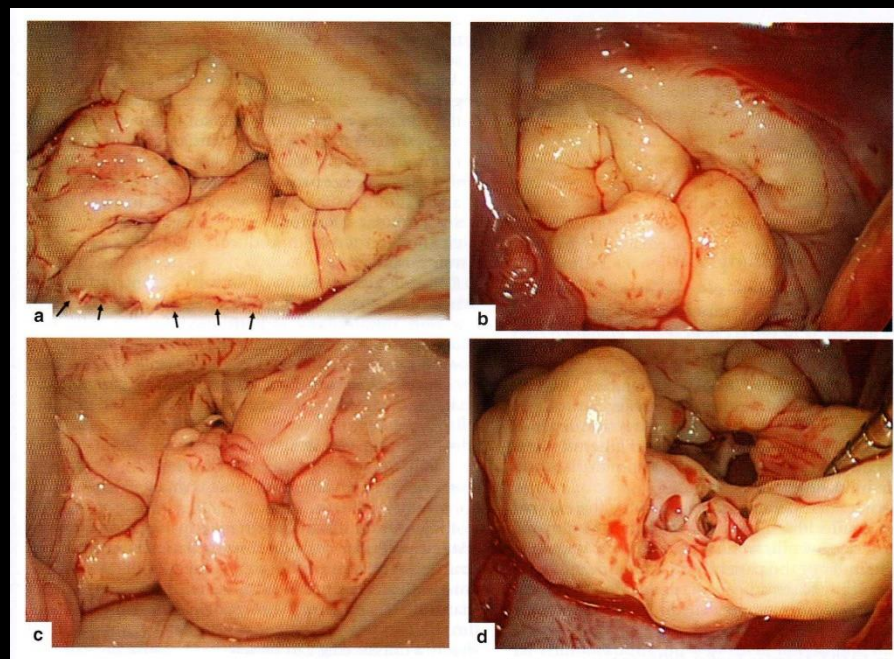
**A mitralis billentyű
klinikai anatómiája,
patológiája
és sebészete**

Mitralis billentyűbetegségek

Endocarditis

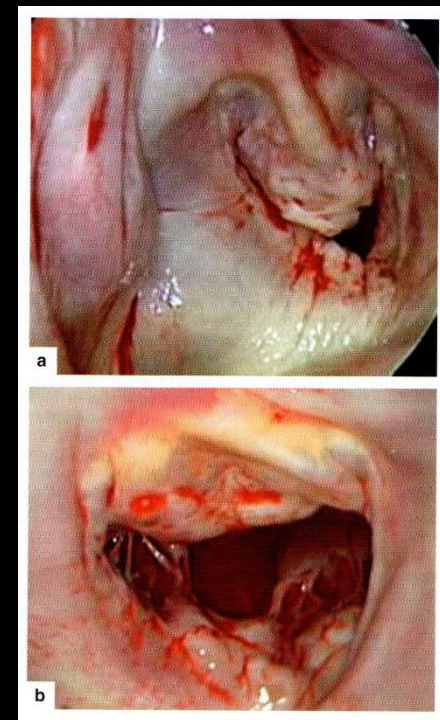


Barlow-billentyű



Carpentier

Ischaemiás cardiomyopathia





A mitralis elégtelenség echocardiographiás képe

