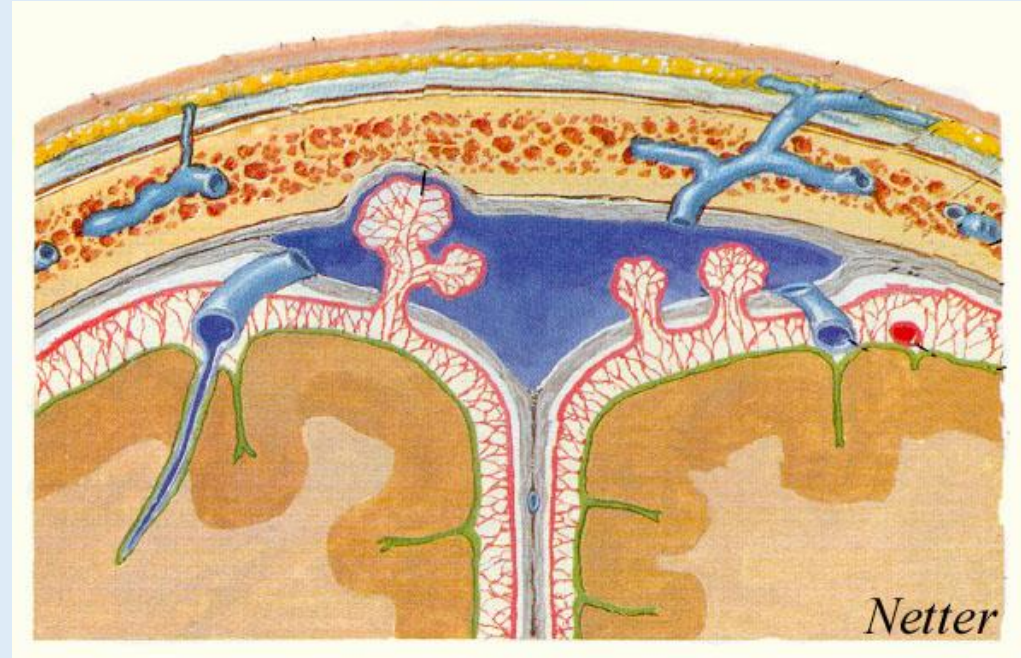


Querschnittanatomie des Kopfes

Dr. Tamás Ruttkay

Anatomisches, Histologisches und Embryologisches Institut
2018.

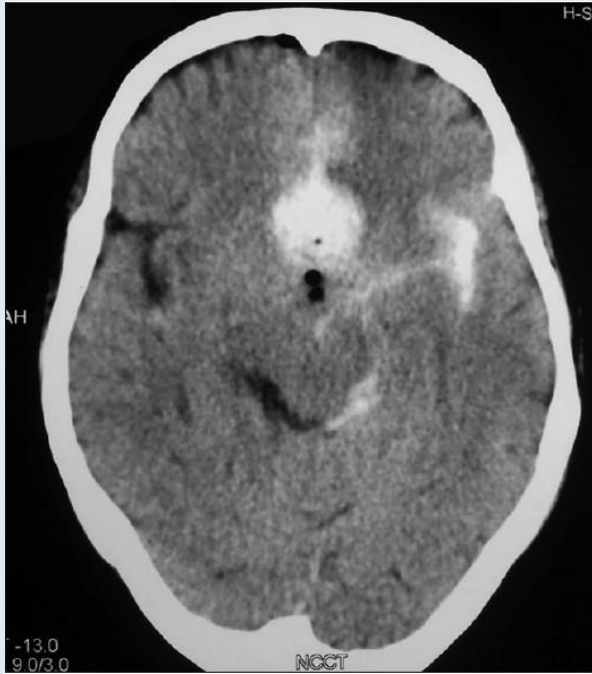
Schichten der Schädeldecke, Hirnhäute



Haut
Galea aponeurotica
Pericranium

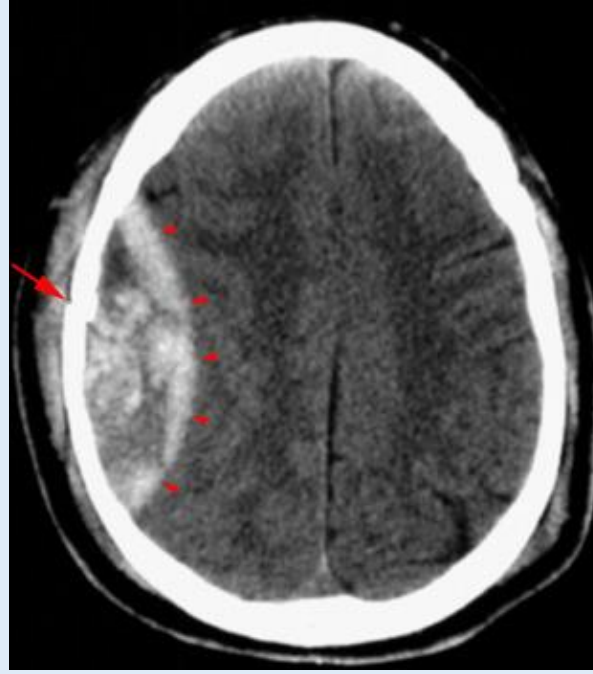
Schädelknochen
Spatium epidurale
Dura mater
Cavum subdurale
Arachnoidea mater
Cavum subarachnoidale
Pia mater

Beispiele für intrakranielle Blutungen



www.neurologyindia.com

subarachnoidal



www.med-ed.virgina.edu

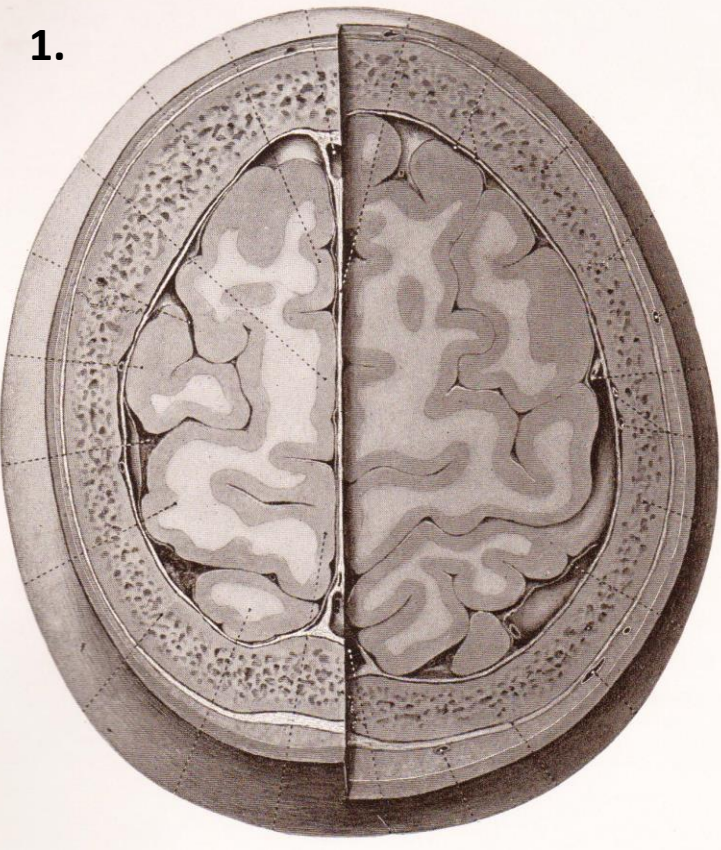
epidural



www.hindawi.com

subdural

1.

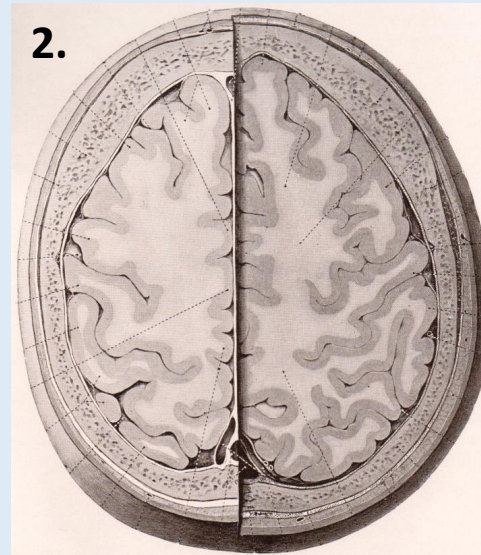


Gyri und Sulci des Gehirns

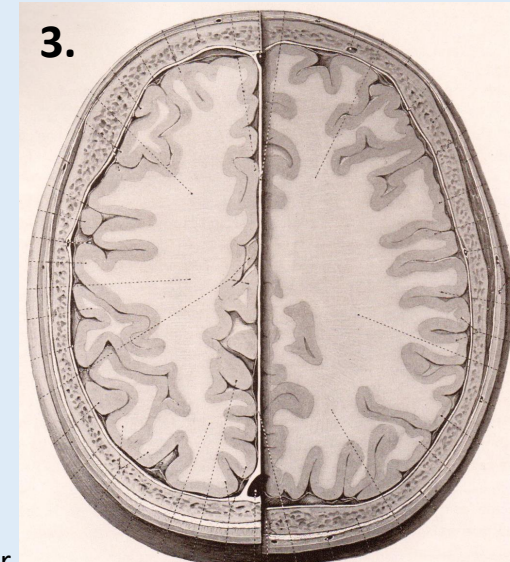
Gyrus frontalis superior
 Gyrus praecentralis
 Sulcus centralis
 Gyrus postcentralis
 Lobulus parietalis superior

Lobulus paracentralis
 Praecuneus

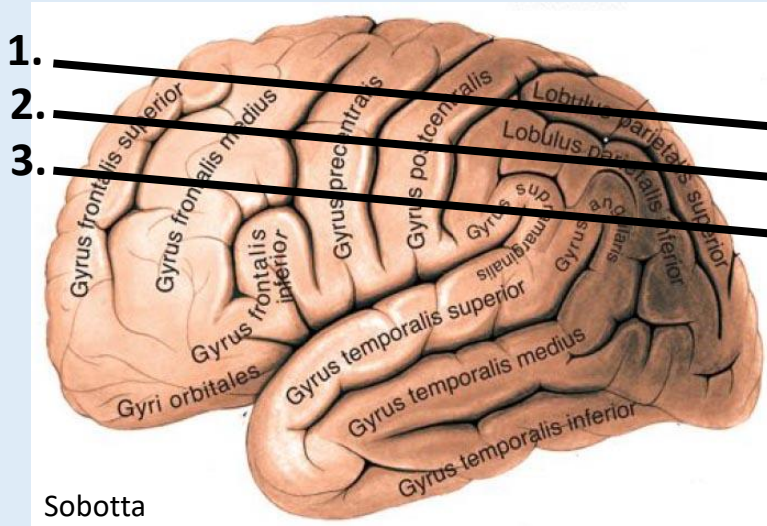
2.



3.



1. _____
2. _____
3. _____

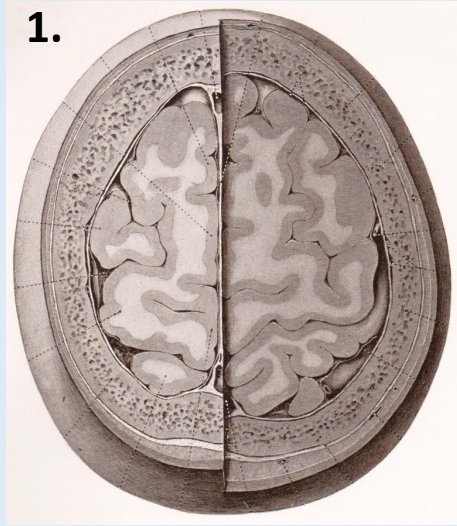


Sobotta

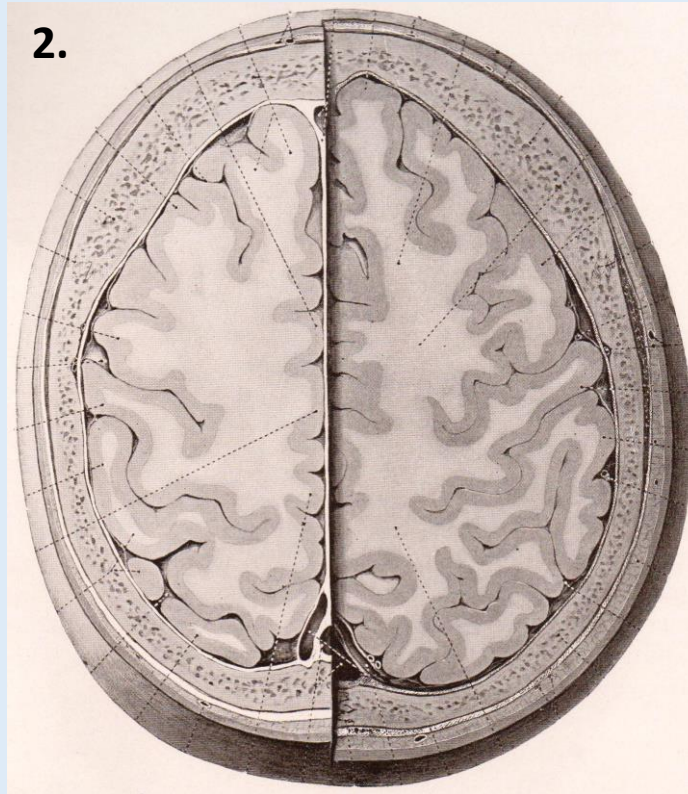
Bilder: Eycleshymer-Schoemaker

Gyri und Sulci des Gehirns

1.

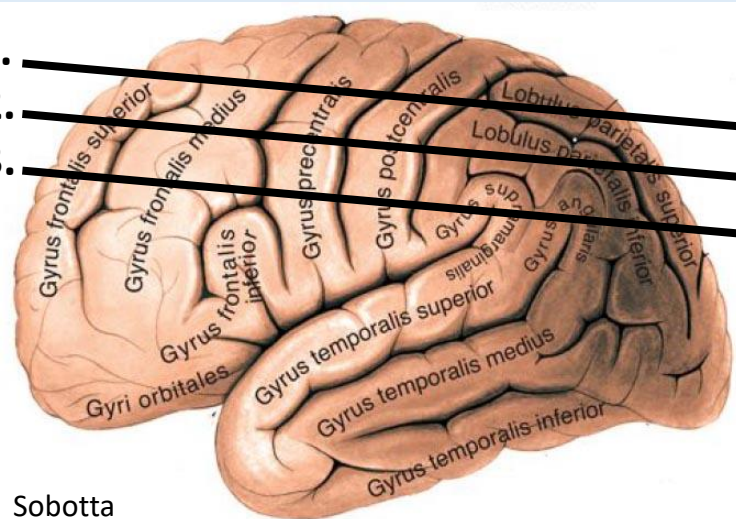


2.



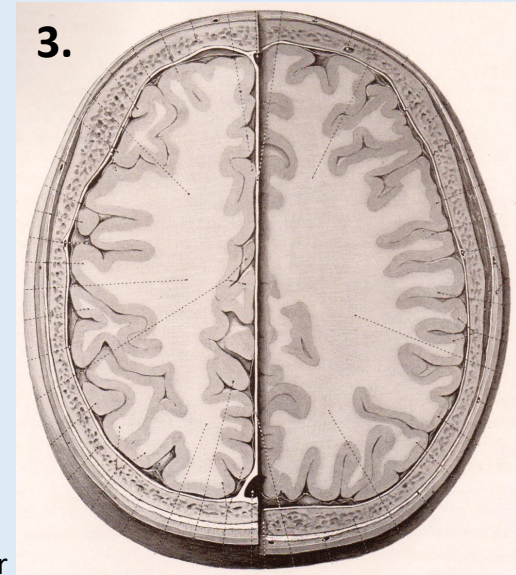
Gyrus frontalis superior
 Sulcus frontalis superior
 Gyrus frontalis medius
 Gyrus praecentralis
 Sulcus centralis
 Gyrus postcentralis
 Lobulus parietalis inferior
 Lobulus parietalis superior
 Lobulus paracentralis
 Praecuneus

1.
2.
3.



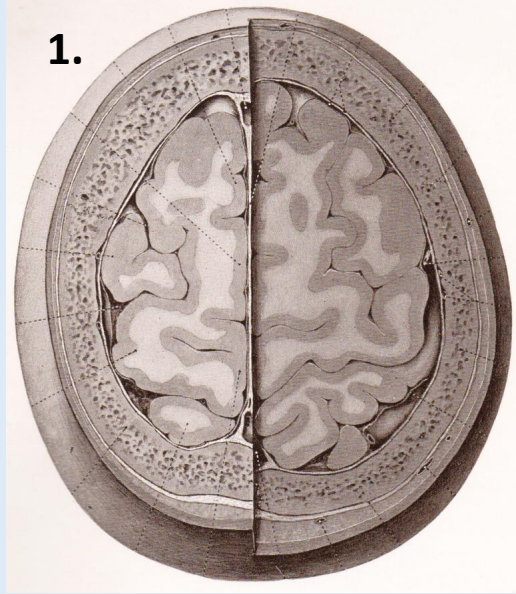
Sobotta

3.



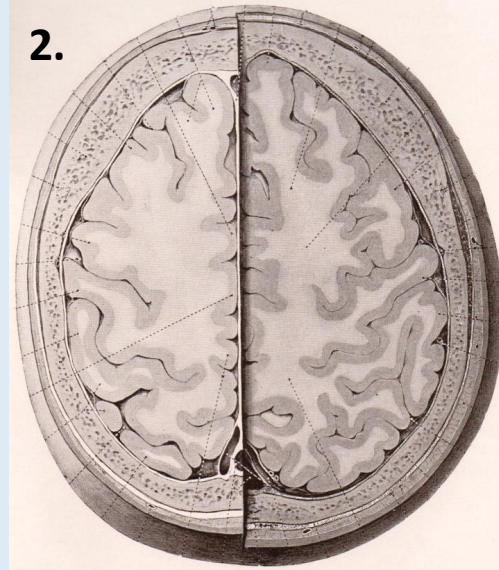
Bilder: Eycleshymer-Schoemaker

1.



Gyri und Sulci des Gehirns

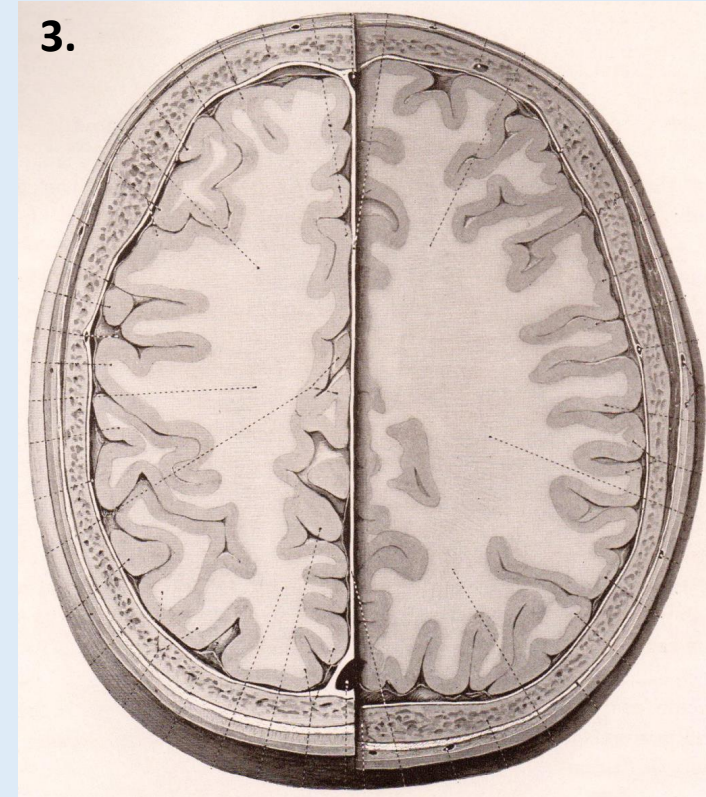
2.



- Gyrus frontalis superior
- Sulcus frontalis superior
- Gyrus frontalis medius
- Gyrus praecentralis
- Sulcus centralis
- Gyrus postcentralis
- Lobulus parietalis inferior
- Sulcus intraparietalis
- Lobulus parietalis superior
- Lobulus paracentralis
- Cuneus
- Praecuneus

Bilder: Eycleshymer-Schoemaker

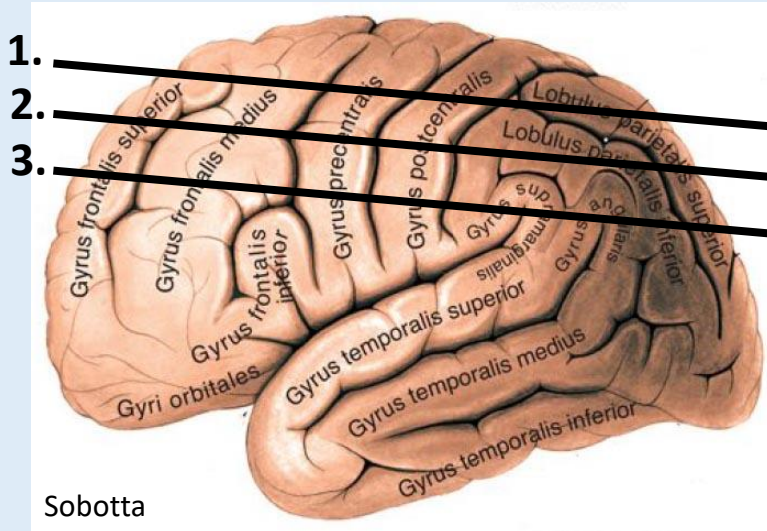
3.



1.

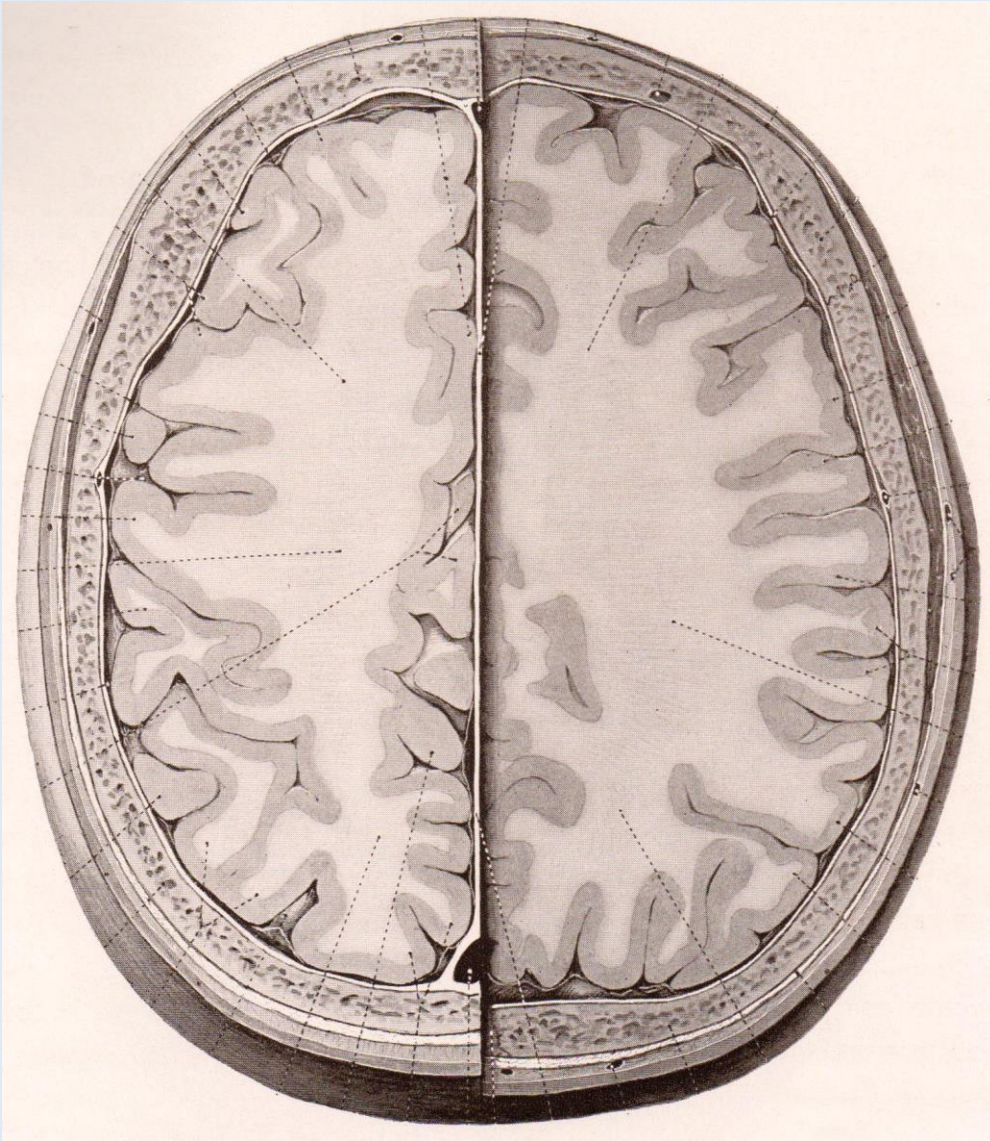
2.

3.



Sobotta

Dura mater und Gefäße



Falx cerebri

Sinus sagittalis superior

Arteria frontalis

Arteria temporalis superficialis

Arteria occipitalis

Arteria meningea media

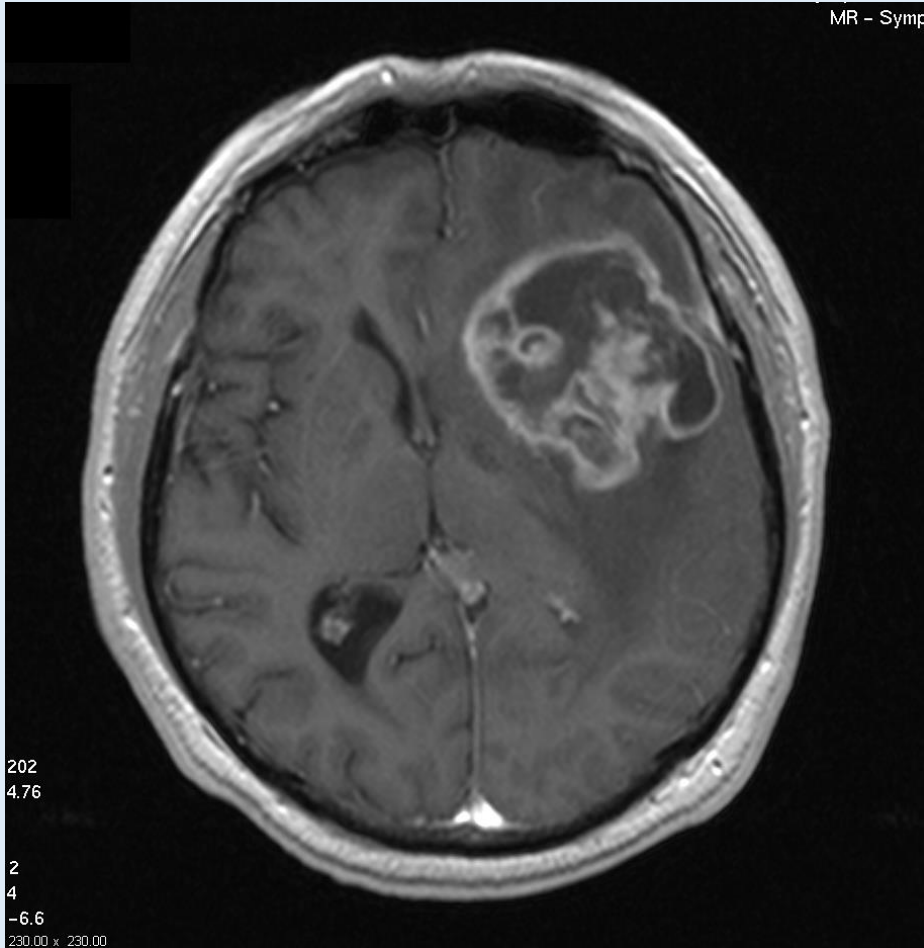
Arteria cerebri anterior

Arteria cerebri media

Arteria cerebri posterior



Hirntumoren

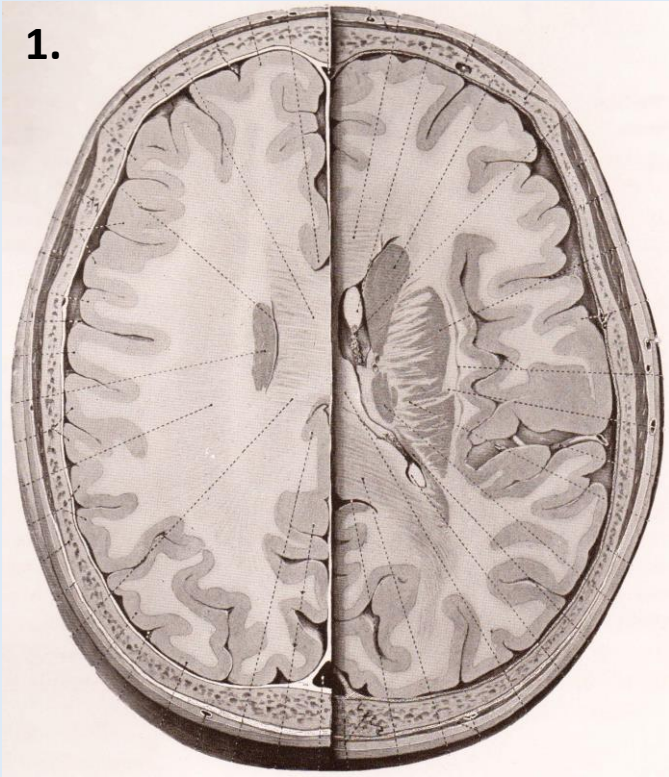


<http://www.bdt-erlangen.de>



<https://www.pinterest.at>

1.



Basalganglien und Diencephalon

2.

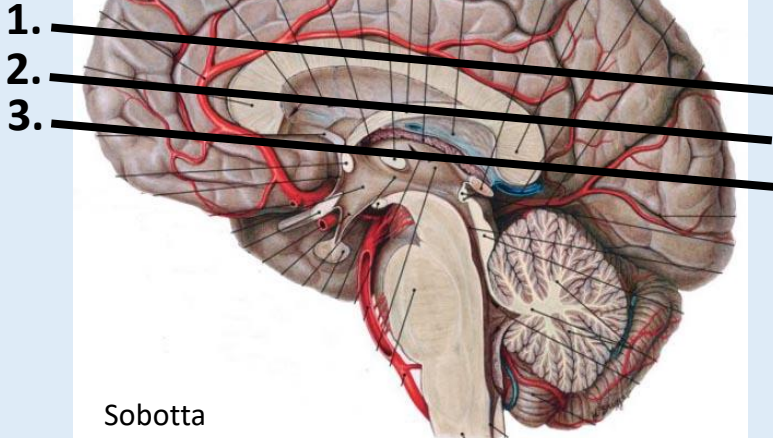
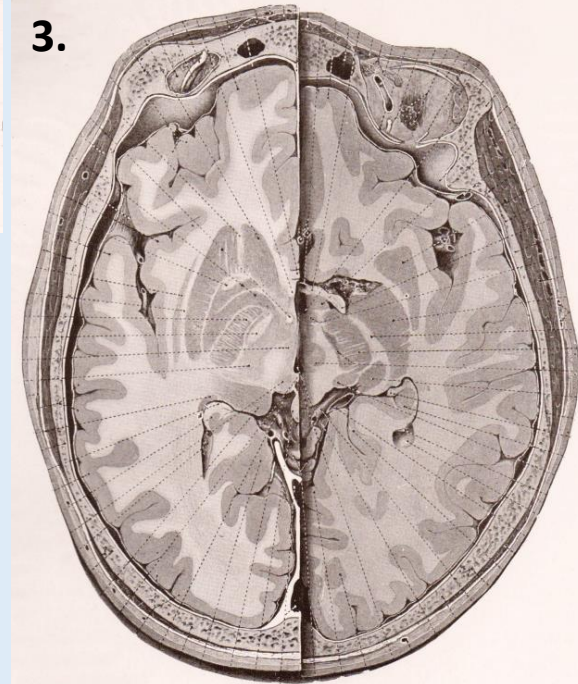


Genu corporis callosi
 Truncus corporis callosi
 Splenium corporis callosi
 Radiatio corporis callosi

Gyrus cinguli
 Sulcus corporis callosi

Sulcus lateralis cerebri

3.

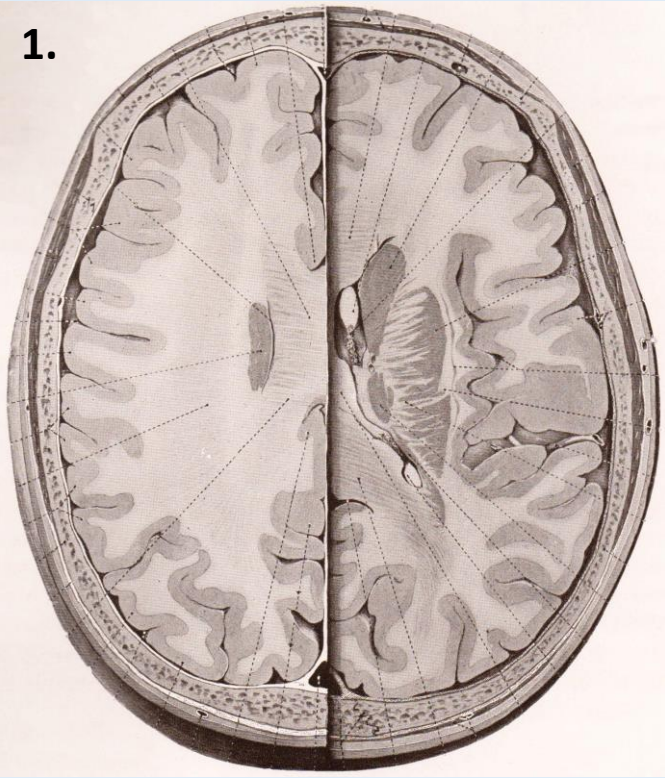


Sobotta

Bilder: Eycleshymer-Schoemaker

Basalganglien und Diencephalon

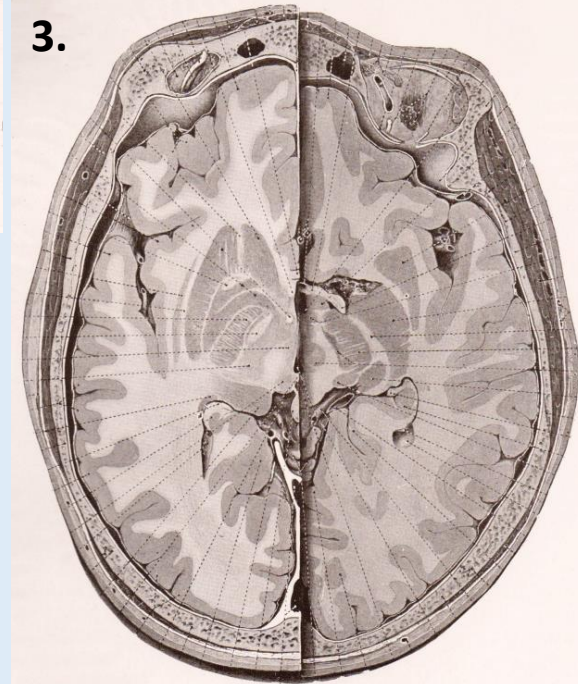
1.



2.



3.



Nucleus caudatus

Capsula interna

Globus pallidus

Putamen

Capsula externa

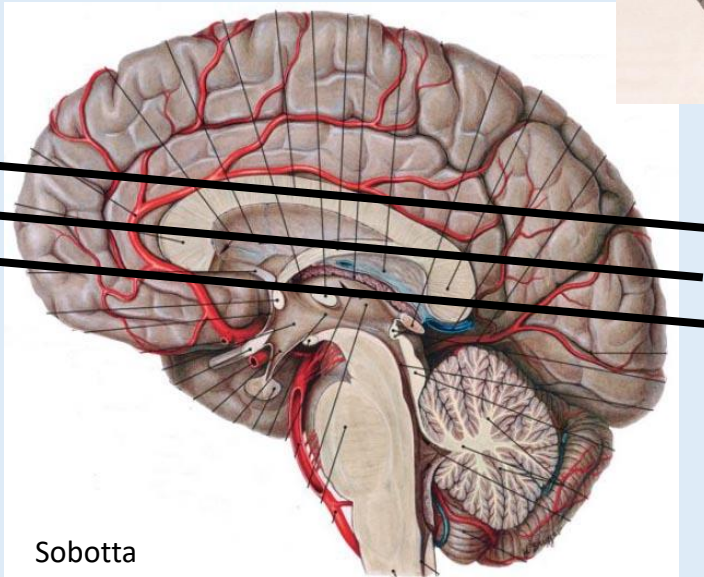
Clastrum

Thalamus

1.

2.

3.

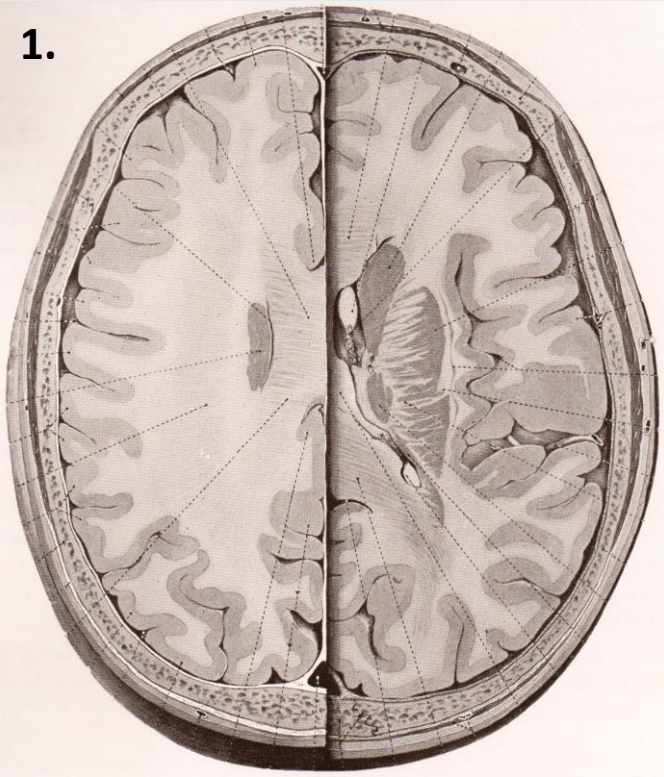


Sobotta

Bilder: Eycleshymer-Schoemaker

Basalganglien und Diencephalon

1.



2.

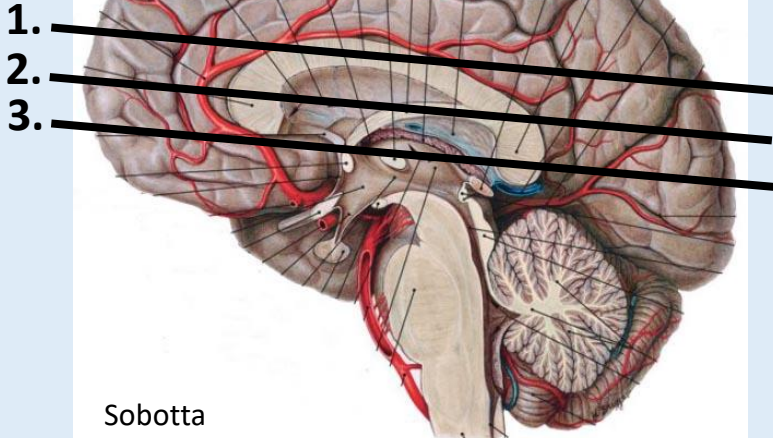
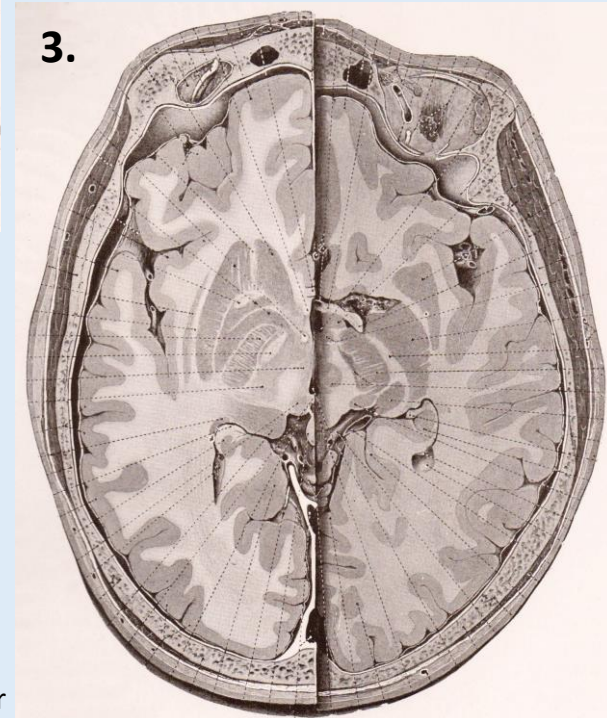


Ventriculus lateralis
Cornu anterius
Pars centralis
Cornu posterius

Ventriculus tertius

Aquaeductus cerebri

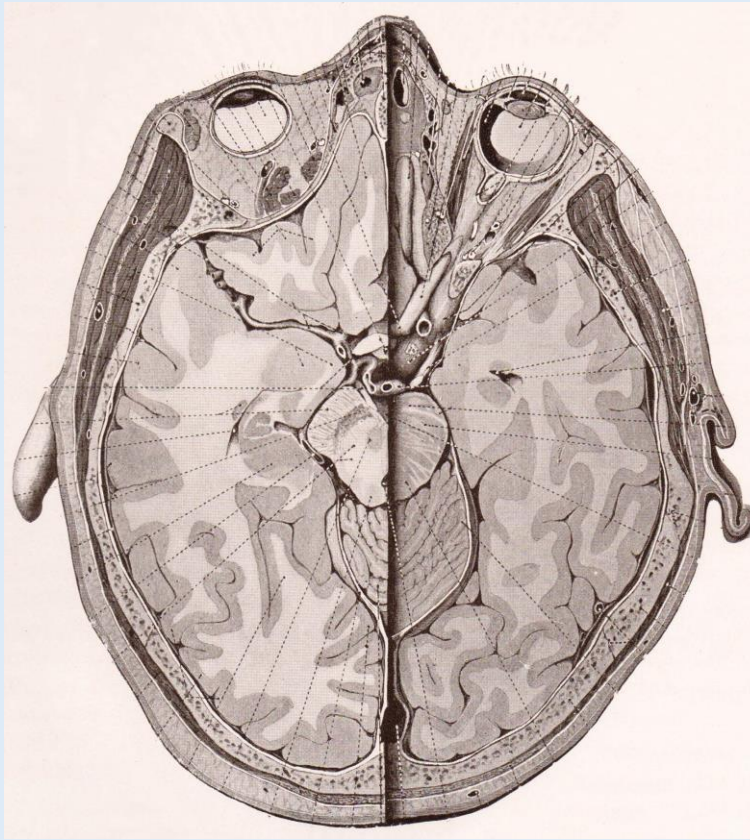
3.



Sobotta

Bilder: Eycleshymer-Schoemaker

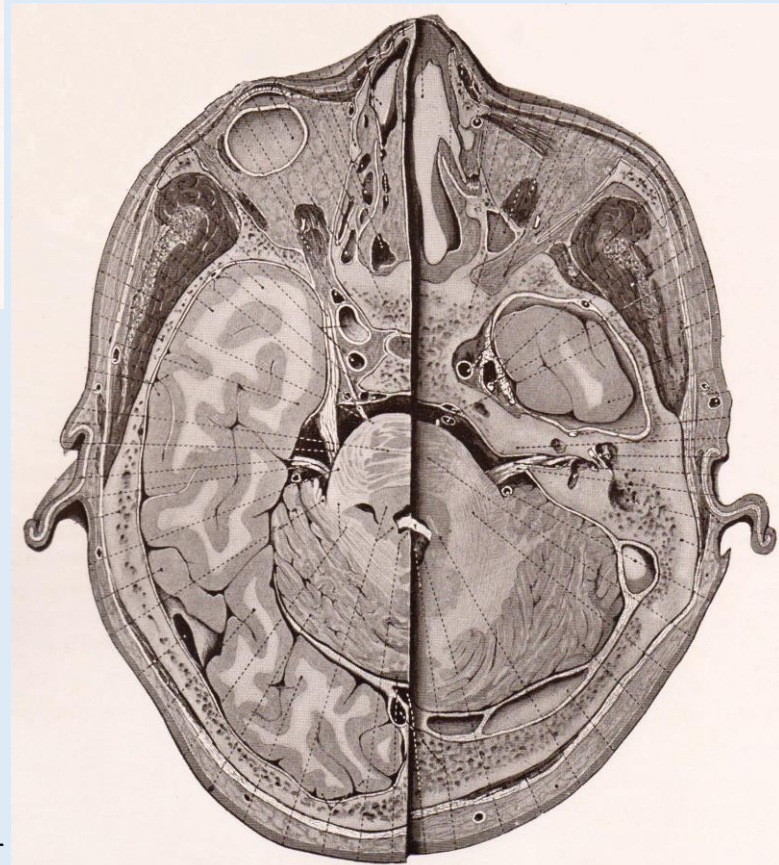
Hirnstamm



Gyrus rectus
Gyri orbitales

Bulbus/Tractus olfactorius
Nervus opticus

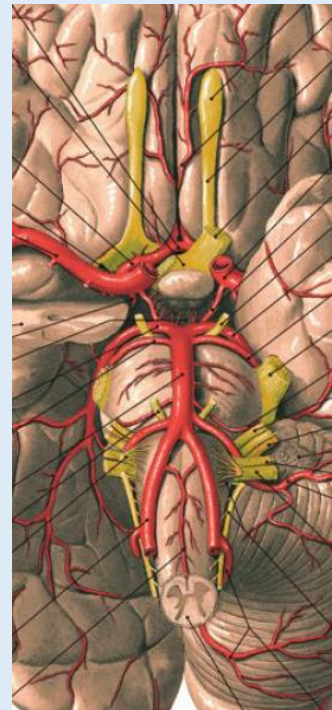
Fossa interpeduncularis



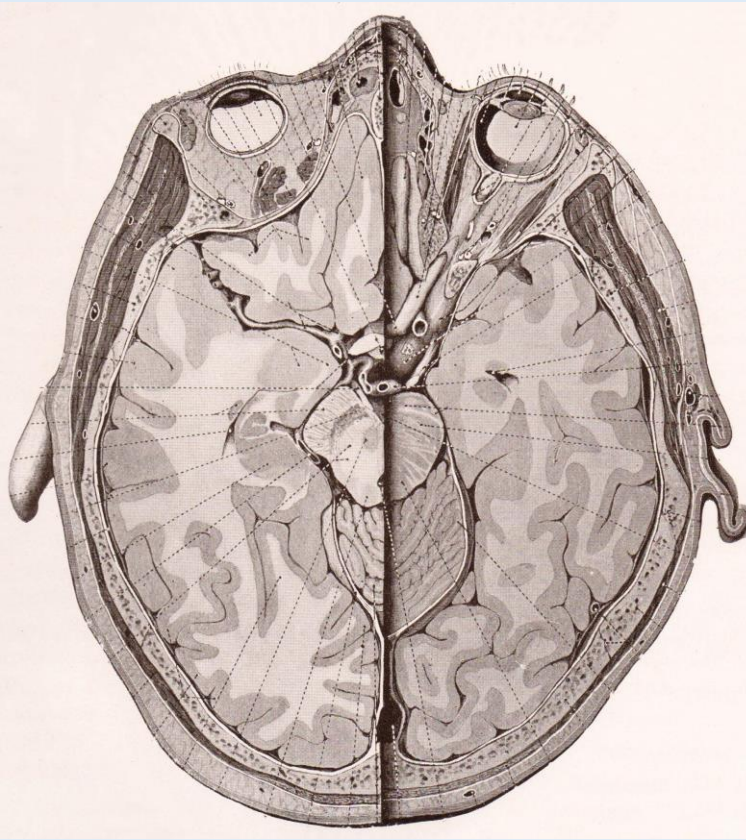
Mesencephalon
Pedunculus cerebri
Substantia nigra
Nucleus ruber
Colliculus inferior

Pons

Sobotta



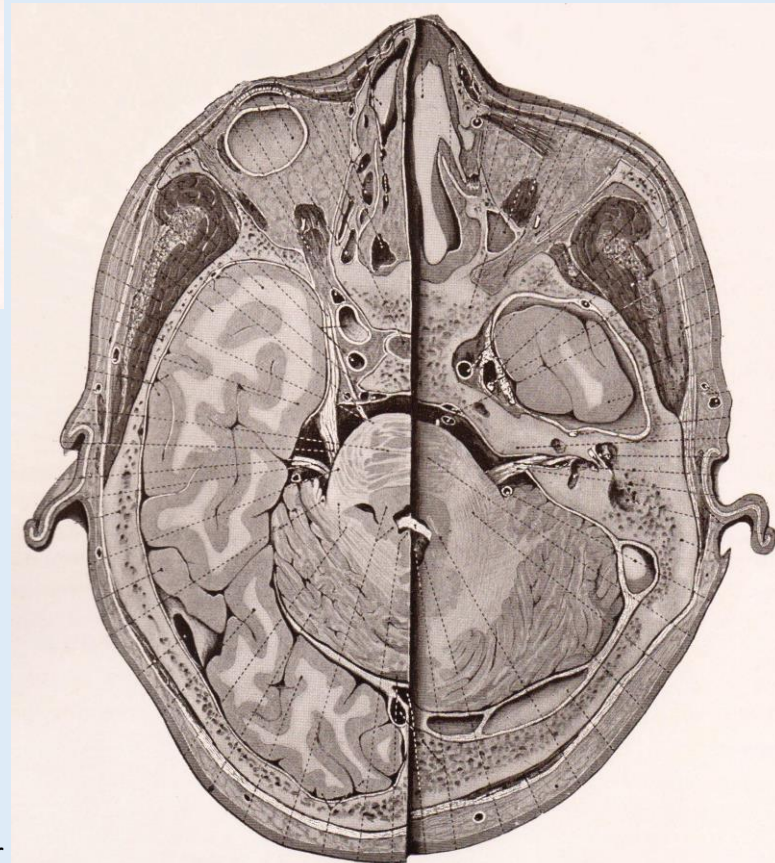
Hirnstamm



Arteria carotis interna
Arteria basilaris

Nervus trigeminus
Nervus abducens
Nervus facialis
Nervus vestibulocochlearis

Sinus transversus

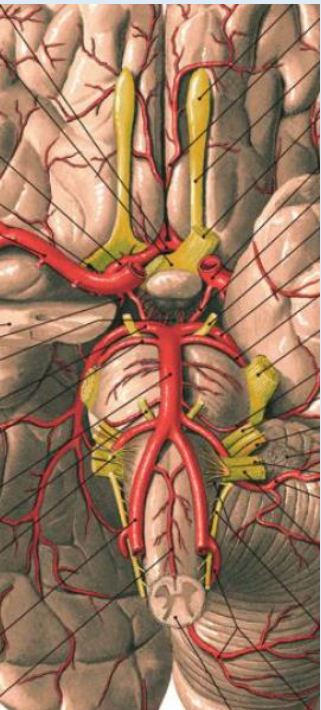


Musculus temporalis
Fascia temporalis

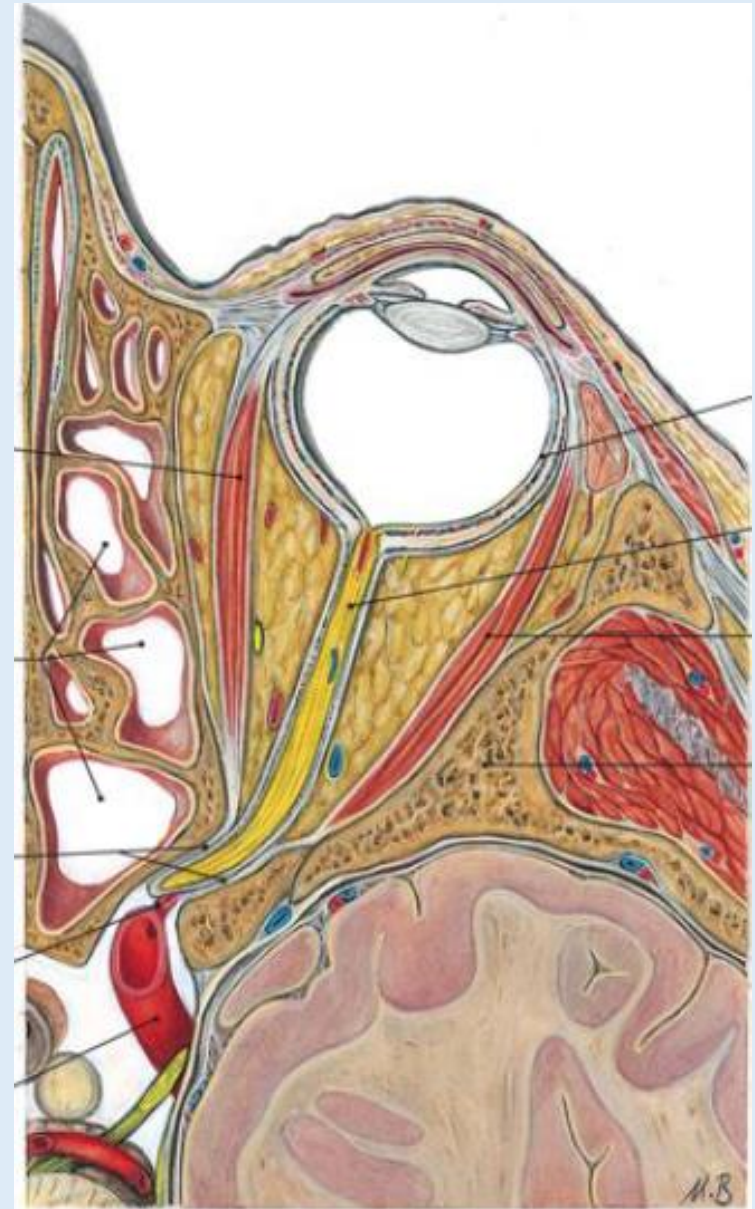
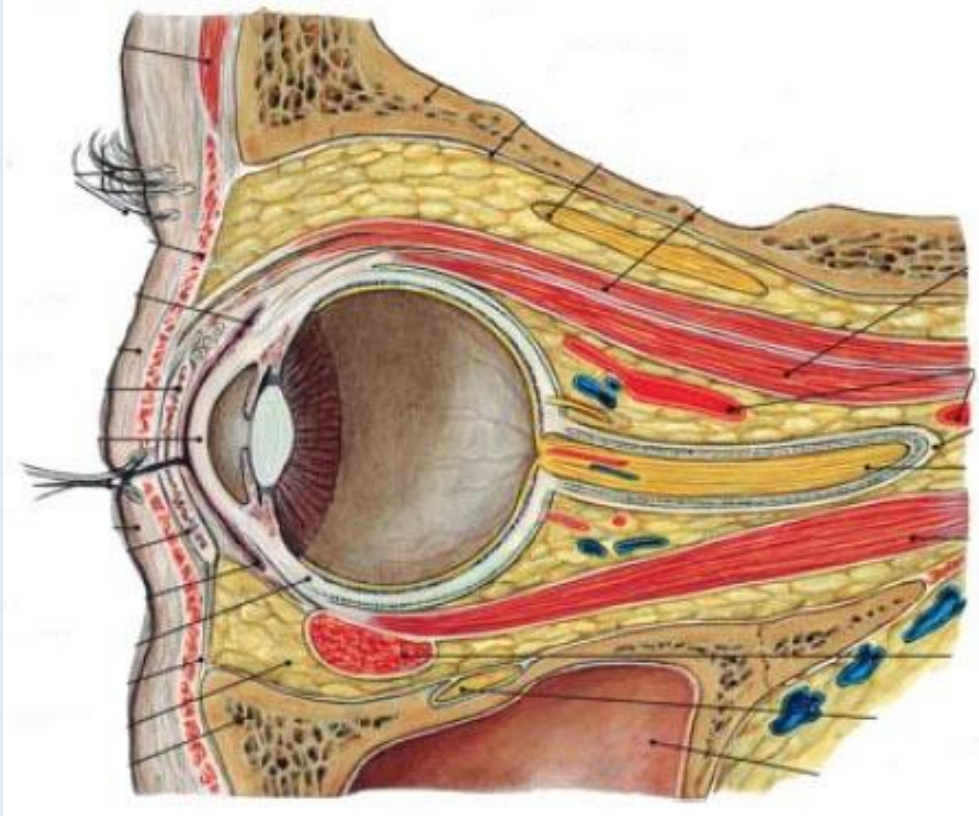
Sinus maxillaris
Cavum nasi

Hypophyse

Sobotta



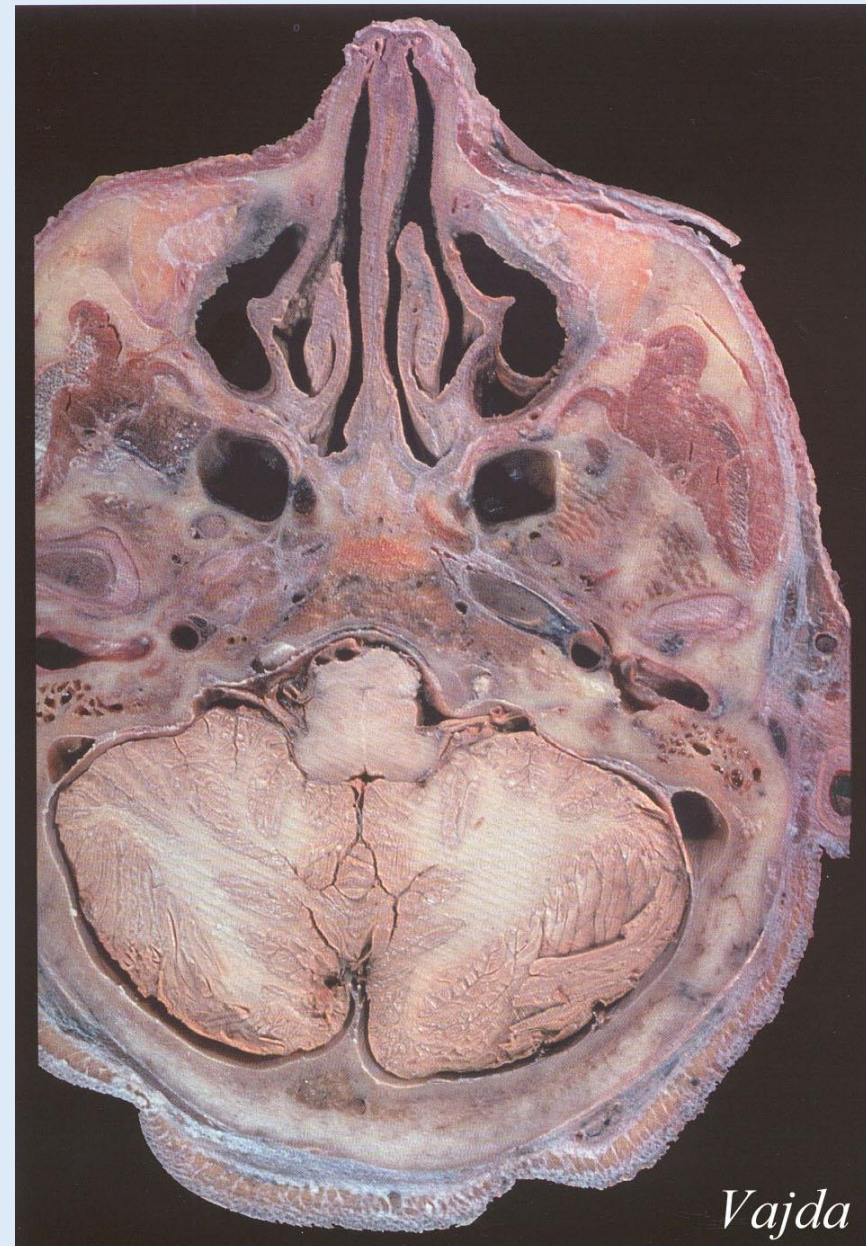
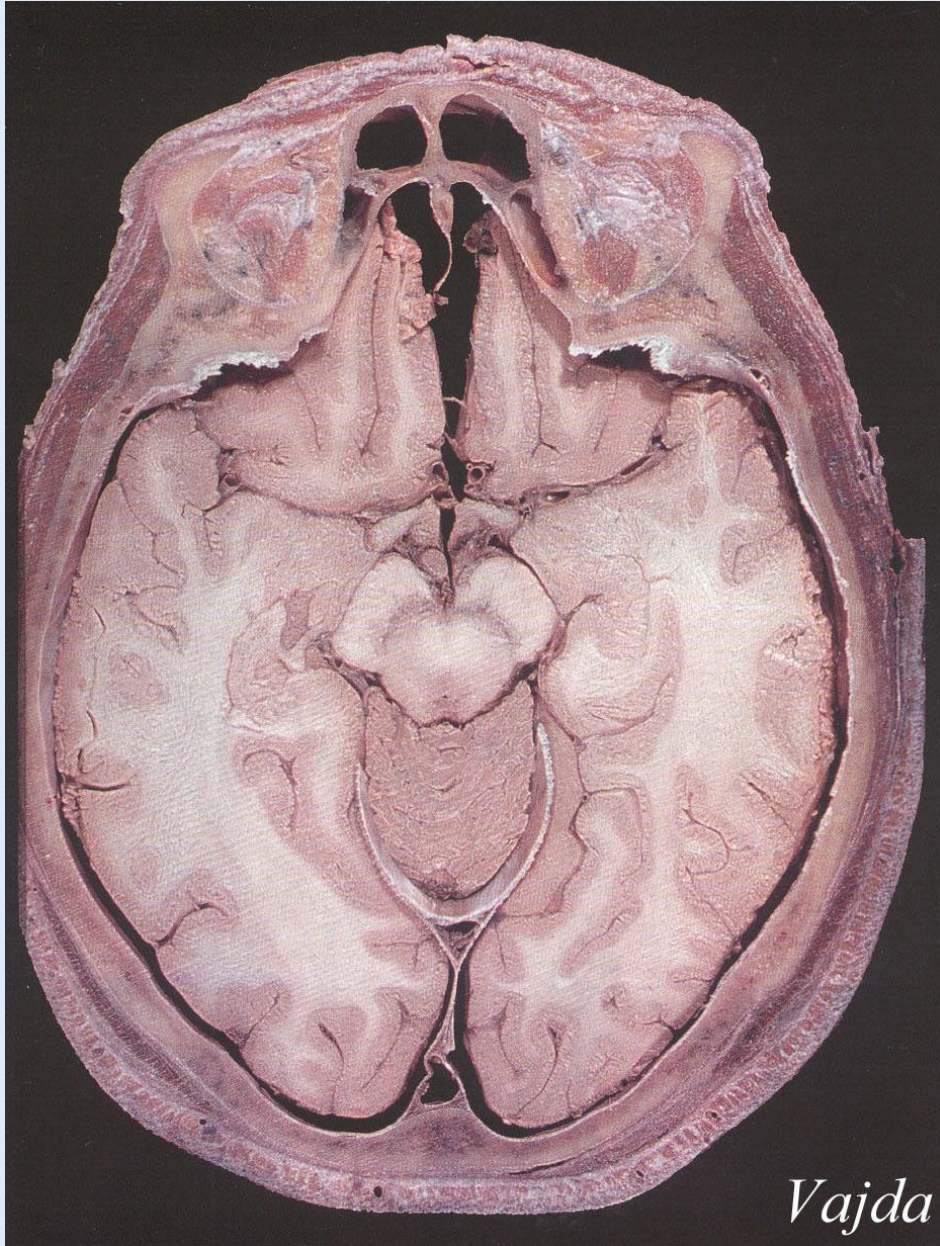
Orbita



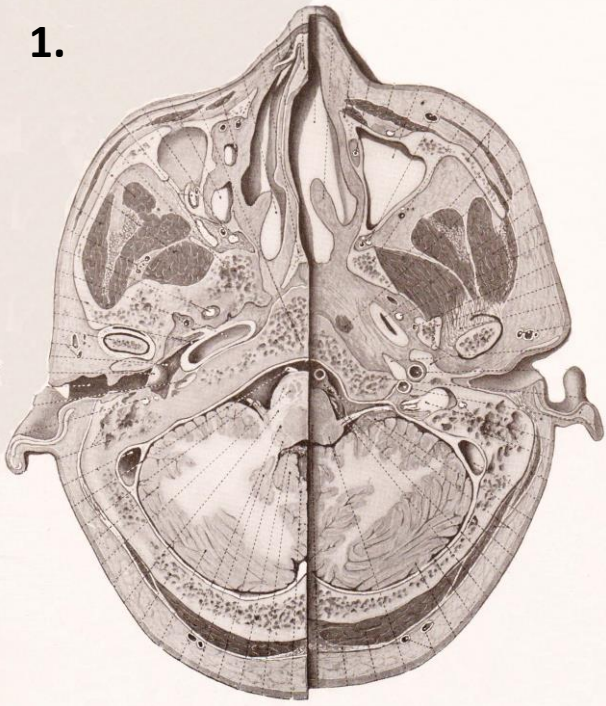
Sobotta

- Bulbus oculi
- Nervus opticus
- Musculus rectus medialis/lateralis
- Nervus oculomotorius
- Anulus tendineus communis
- Glandula lacrimalis
- Periorbita

Querschnittpräparate



1.



Muskulatur

Musculus trapezius

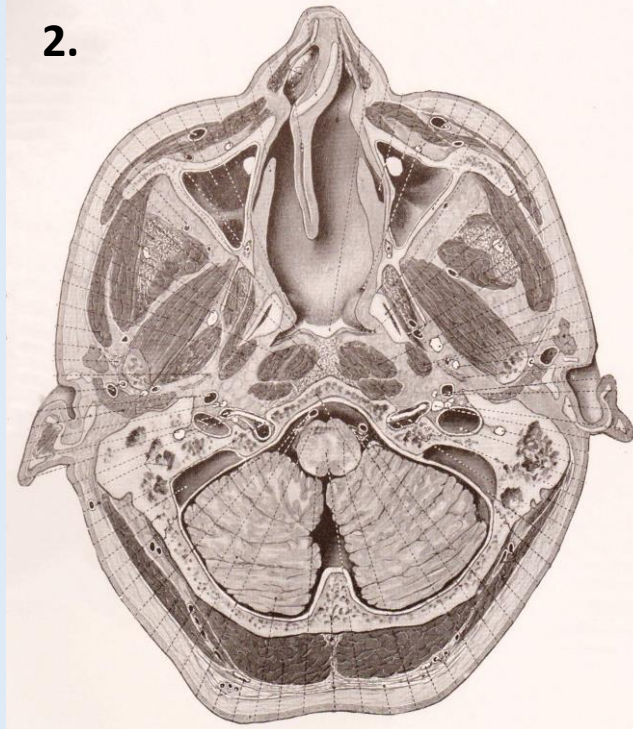
Musculus splenius capitis

Musculus semispinalis capitis

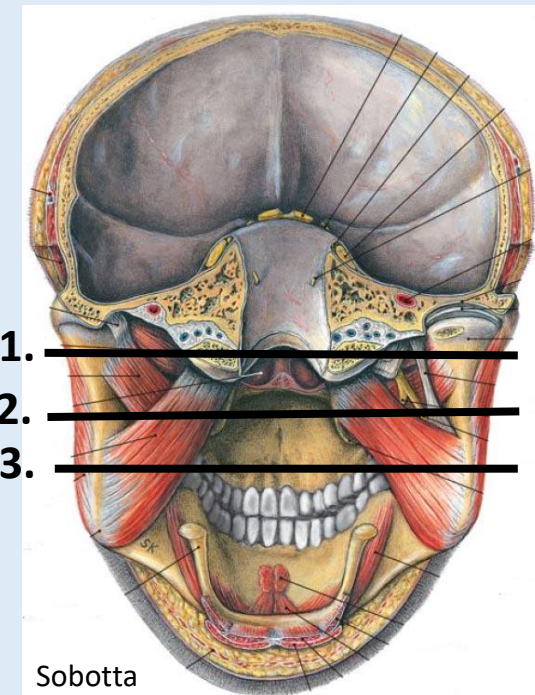
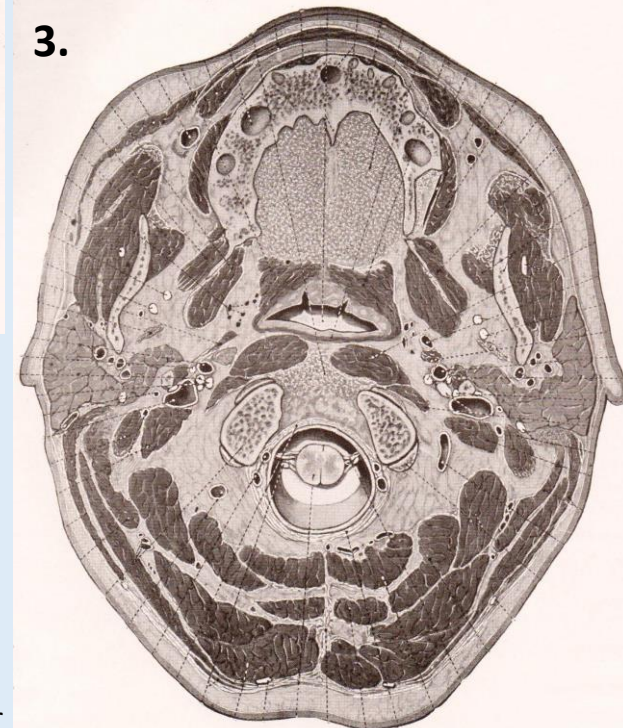
Musculus rectus capitis posterior minor/major

Musculus obliquus capitis sup.

2.



3.



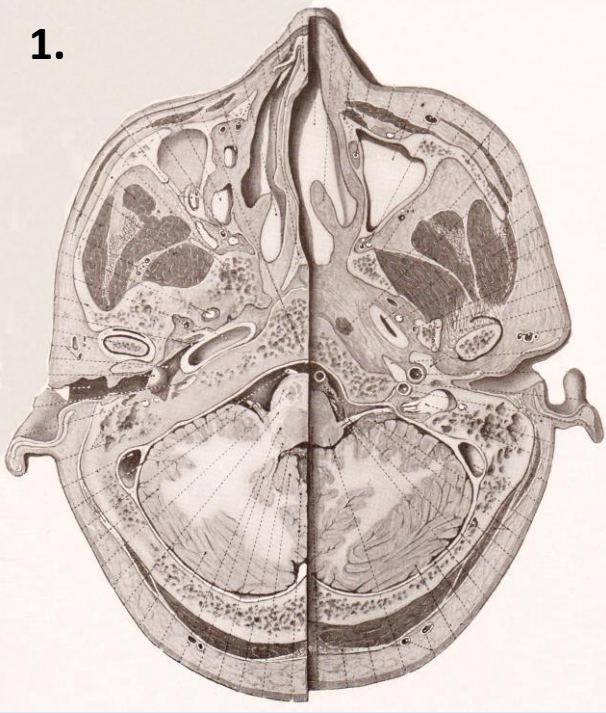
Musculus masseter

Musculus temporalis

Musculus pterygoideus lateralis

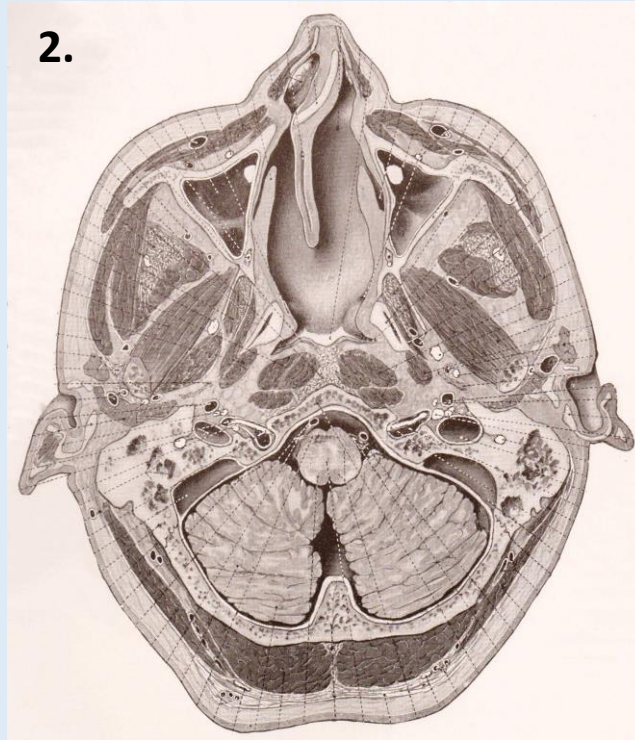
Musculus pterygoideus medialis

1.



Nasenhöhle

2.



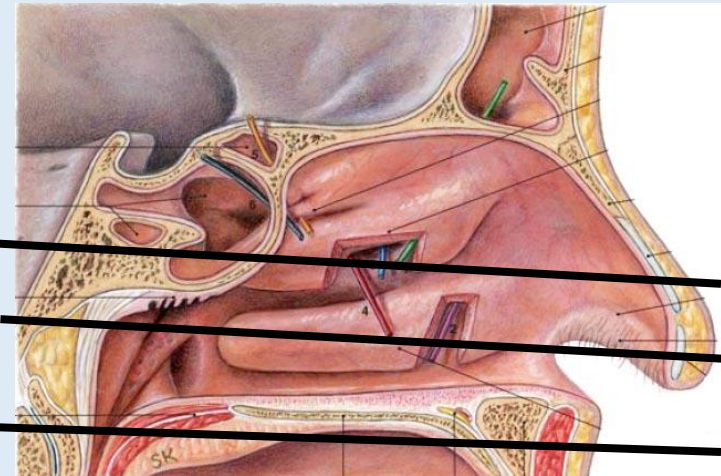
Sinus maxillaris
 Septum nasi
 Concha nasalis media
 Concha nasalis inferior

Tuba auditiva

3.



Sobotta



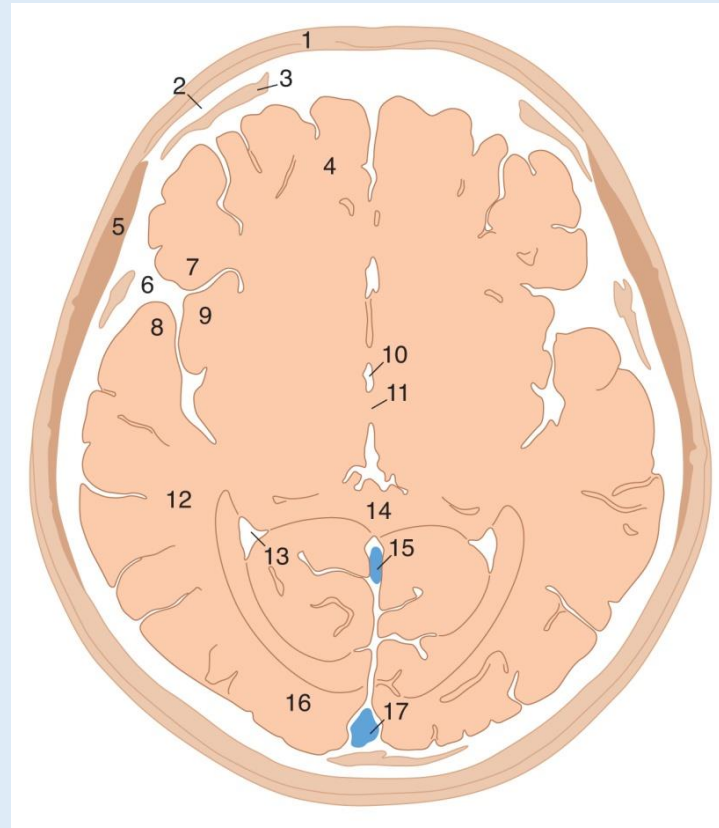
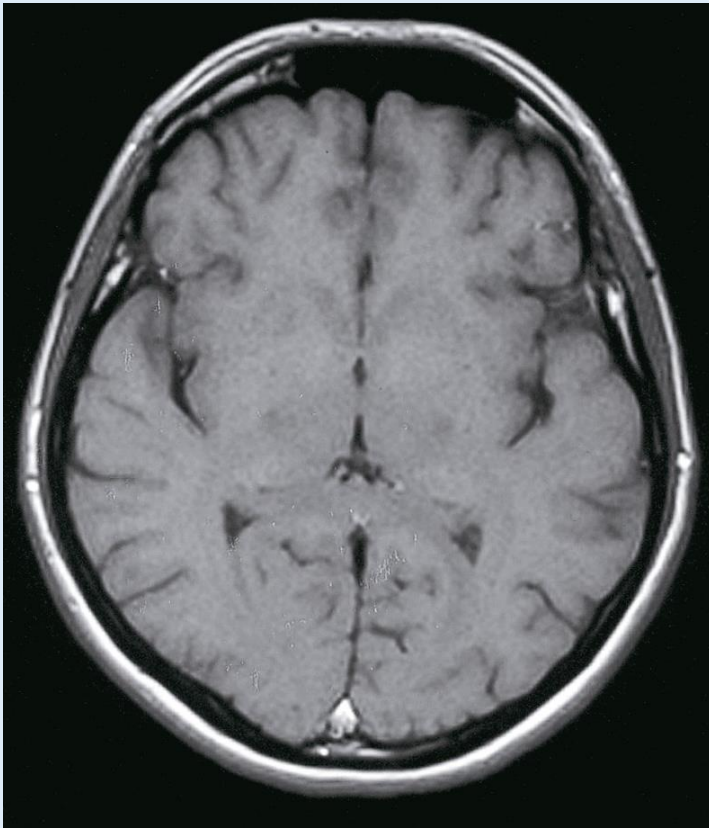
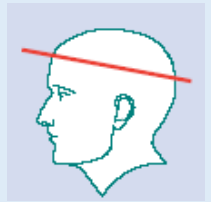
1.

2.

3.

Bilder: Eycleshymer-Schoemaker

Gehirn

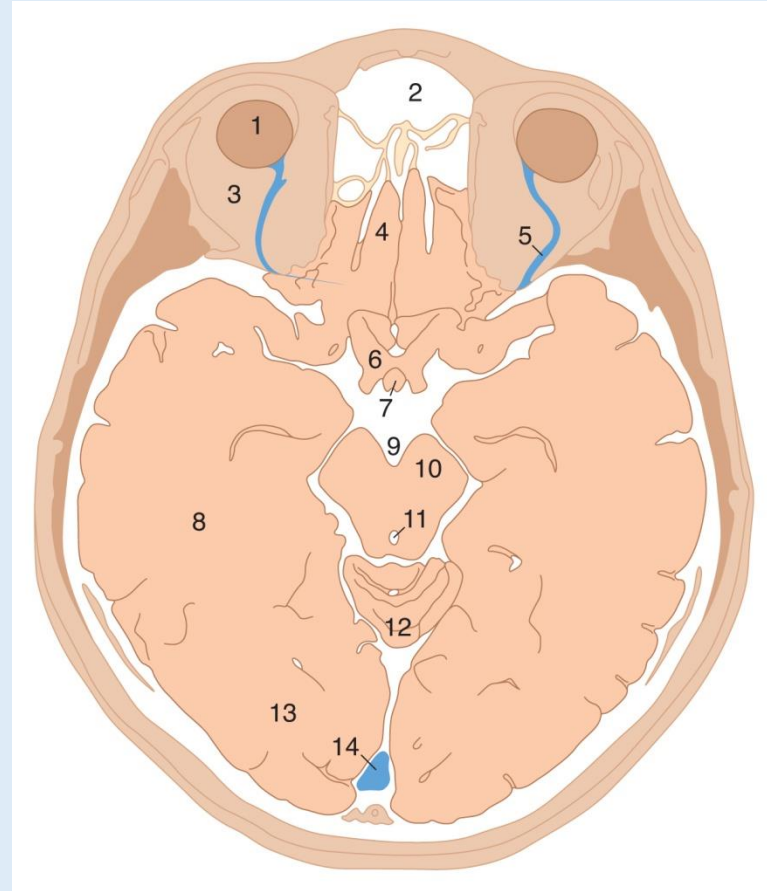
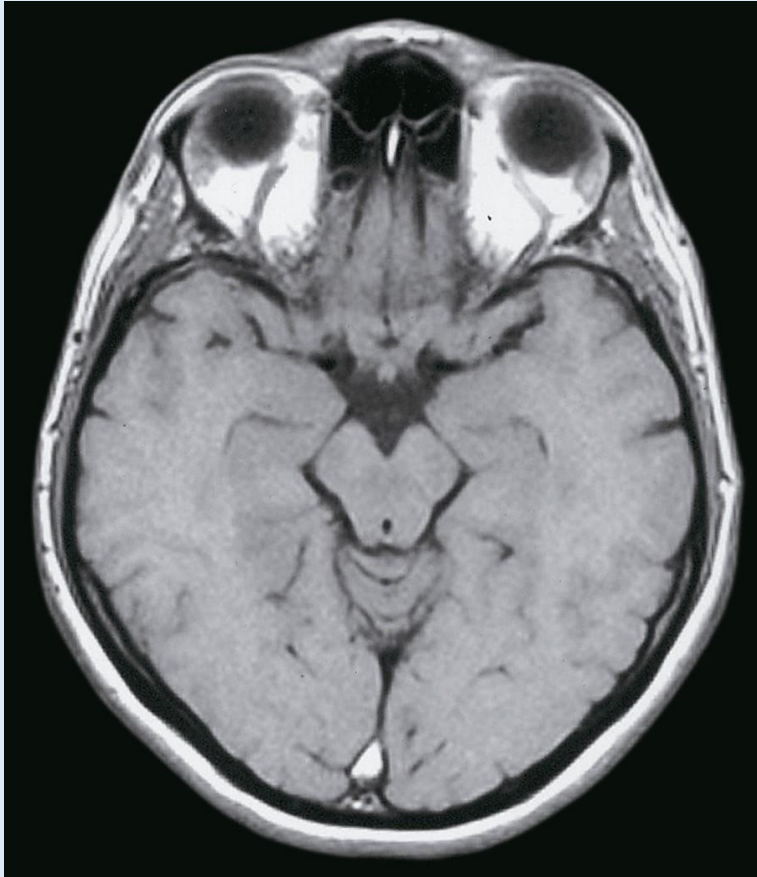
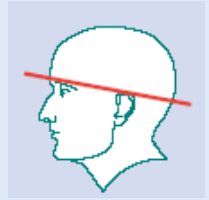


Bilder: Prof. Csillag

1. Galea aponeurotica
2. **Tabula externa calvariae**
3. **Diploë**
4. Lobus frontalis
5. **M. temporalis**
6. Fissura lateralis (Sylvii)
7. Operculum frontale
8. Operculum temporale
9. Insula

10. **Ventriculus tertius**
11. Adhaesio interthalamica
12. Lobus temporalis
13. Trigonum collaterale
14. Splenium corporis callosi
15. Sinus sagittalis inf. et sinus rectus
16. Lobus occipitalis
17. Sinus sagittalis sup.

Gehirn

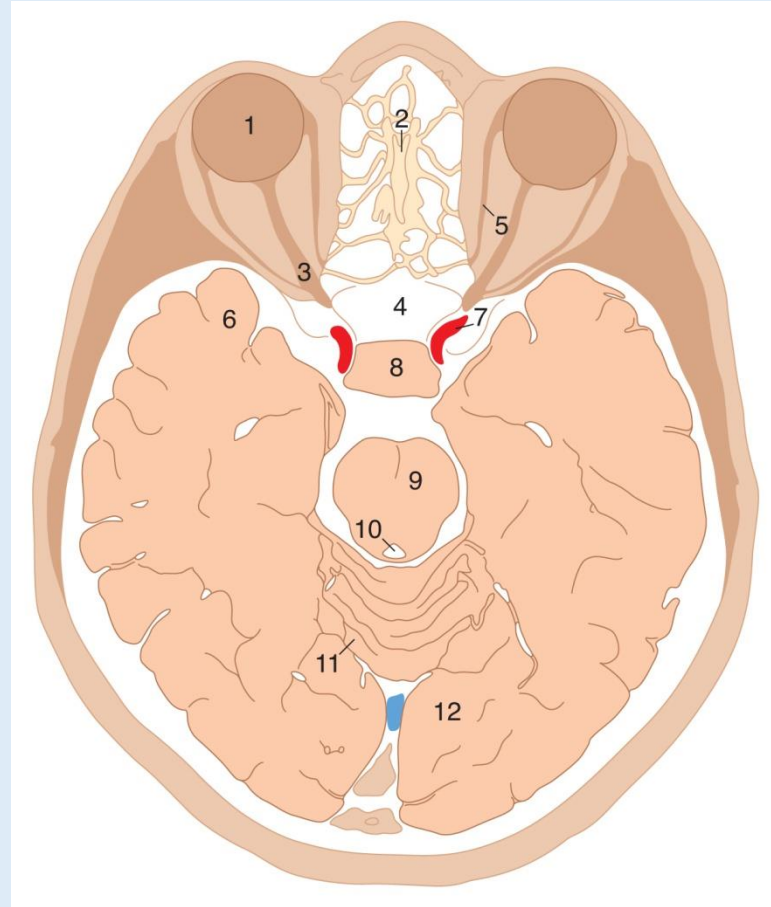
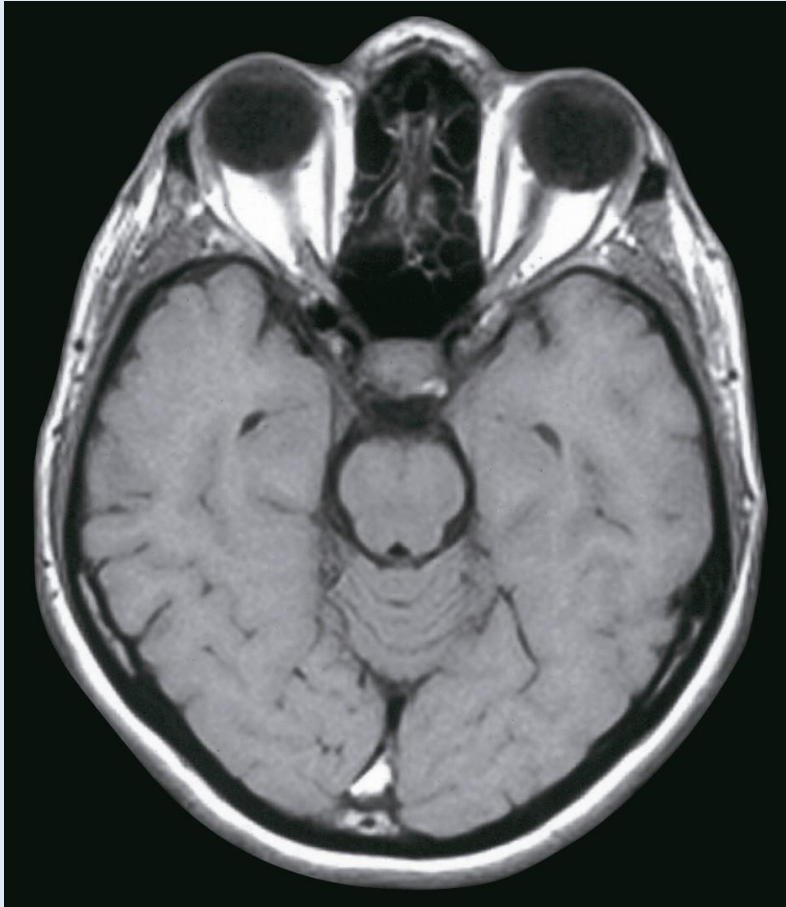
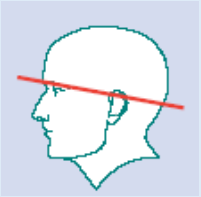


1. Bulbus oculi
2. Cavum nasi
3. Orbita
4. Gyrus rectus
5. V. ophthalmica sup.
6. **Chiasma opticum**
7. **Infundibulum**

8. Lobus temporalis
9. **Fossa interpeduncularis**
10. Crus cerebri
11. Aquaeductus cerebri
12. Cerebellum
13. Lobus occipitalis
14. Sinus sagittalis sup.

Bilder: Prof. Csillag

Gehirn

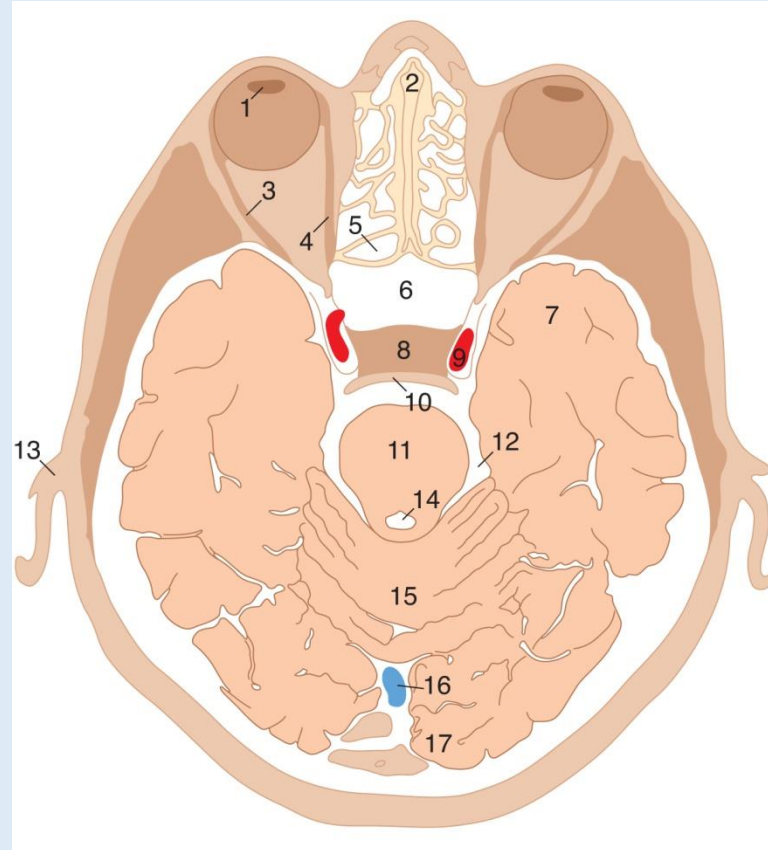
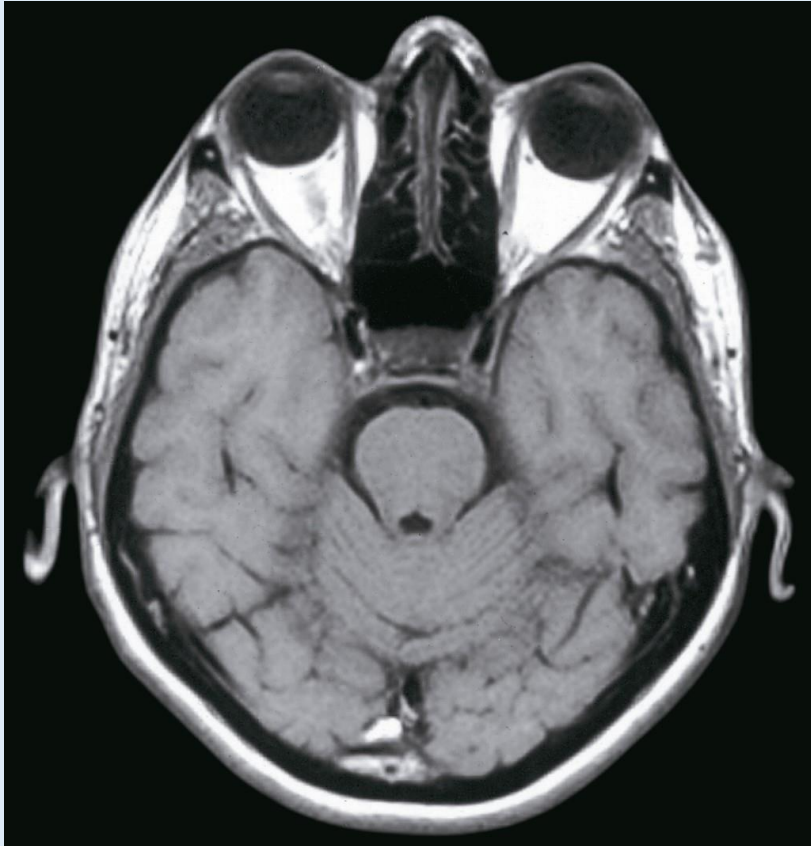
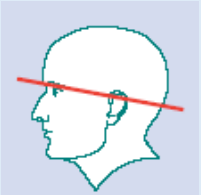


Bilder: Prof. Csillag

1. Bulbus oculi
2. Cavum nasi
3. N. opticus
4. Sinus sphenoidalis
5. M. rectus med.
6. Lobus temporalis

7. **A. ophthalmica**
8. Sella turcica
9. Pons
10. Ventriculus quartus
11. Vermis cerebelli
12. Lobus occipitalis

Gehirn



Bilder: Prof. Csillag

1. Lens oculi
2. Septum nasi
3. M. rectus lat.
4. M. rectus med.
5. Recessus sphenoidalis
6. Sinus sphenoidalis
7. Polus temporalis
8. Sella turcica et hypophysis

9. A. carotis int.
10. Dorsum sellae
11. Pons
12. Cisterna ambiens
13. Auricula
14. Ventriculus quartus
15. Vermis cerebelli
16. Sinus sagittalis sup.
17. Lobus occipitalis