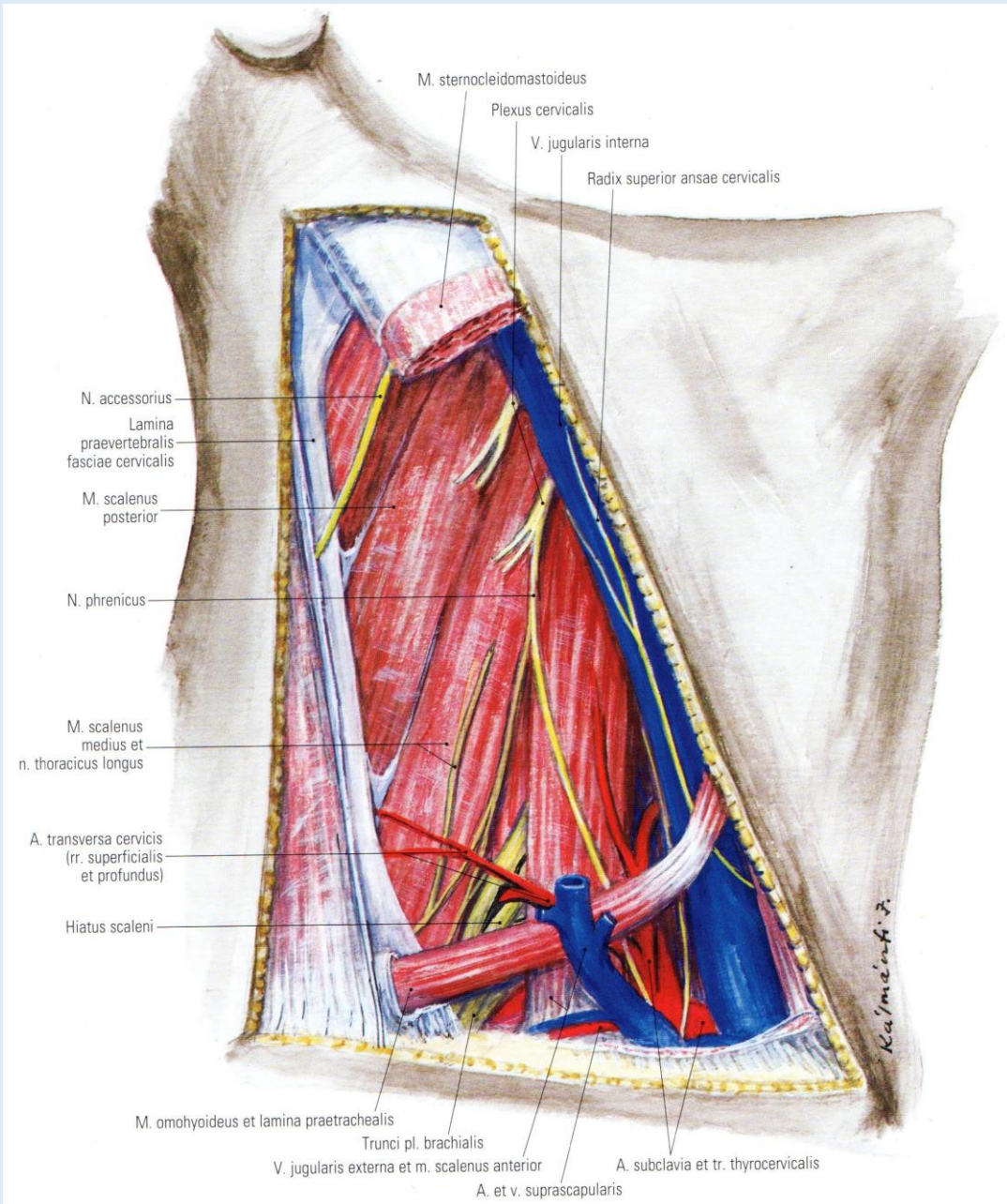


# Tiefe Halsregionen, Querschnittanatomie des Halses

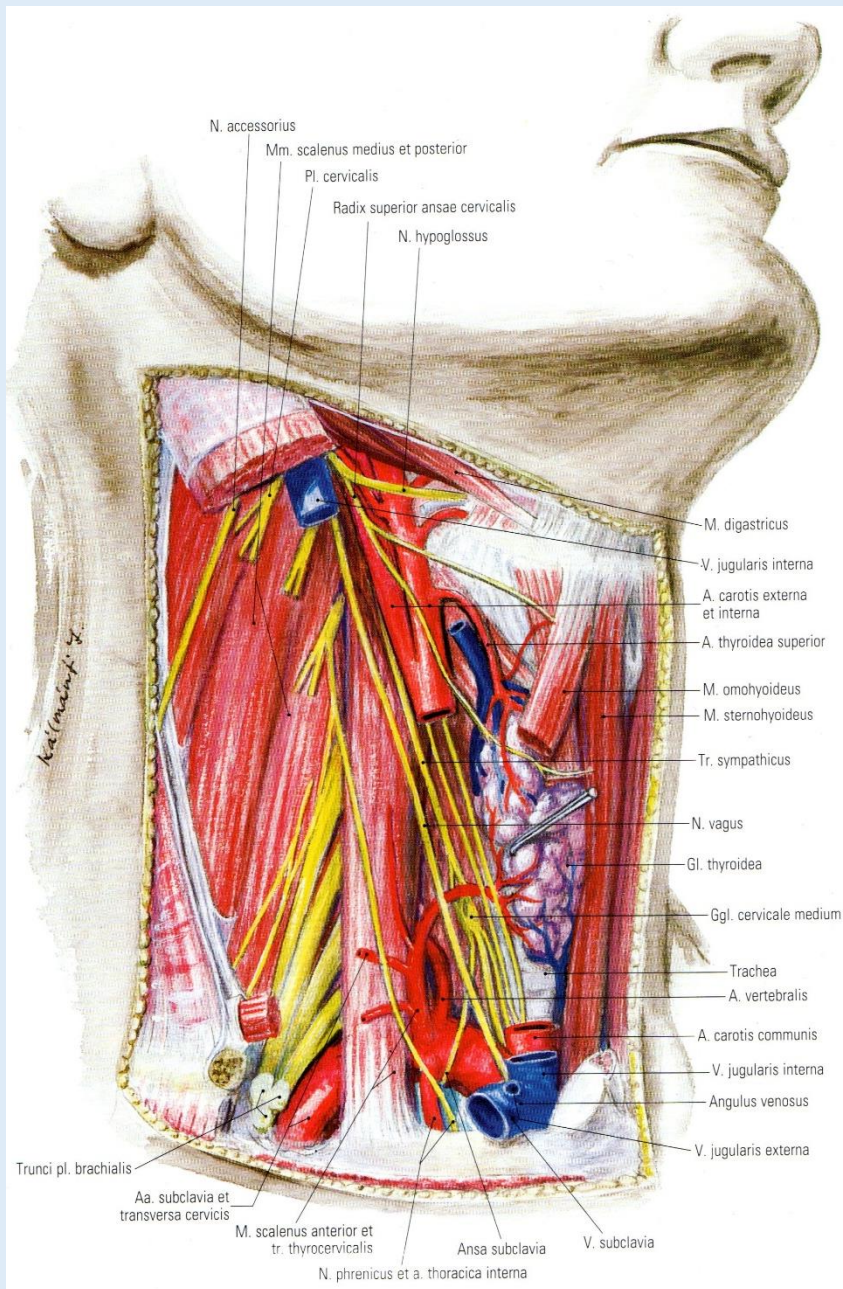
Dr. Tamás Ruttkay

Anatomisches, Histologisches und Embryologisches Institut  
2018.



## Regio supraclavicularis

# Fossa scalenotrachealis



## Vagina carotica

- Vena jugularis interna (lateral)
- Arteria carotis communis (medial)
- Nervus vagus (posterior)

## Truncus sympathicus

- Ganglion cervicale medium
- Ganglion cervicale inferius
- Ganglion thoracale I

Ggl. stellatum

## Nervus phrenicus

## Angulus venosus dexter

- Ductus lymphaticus dexter

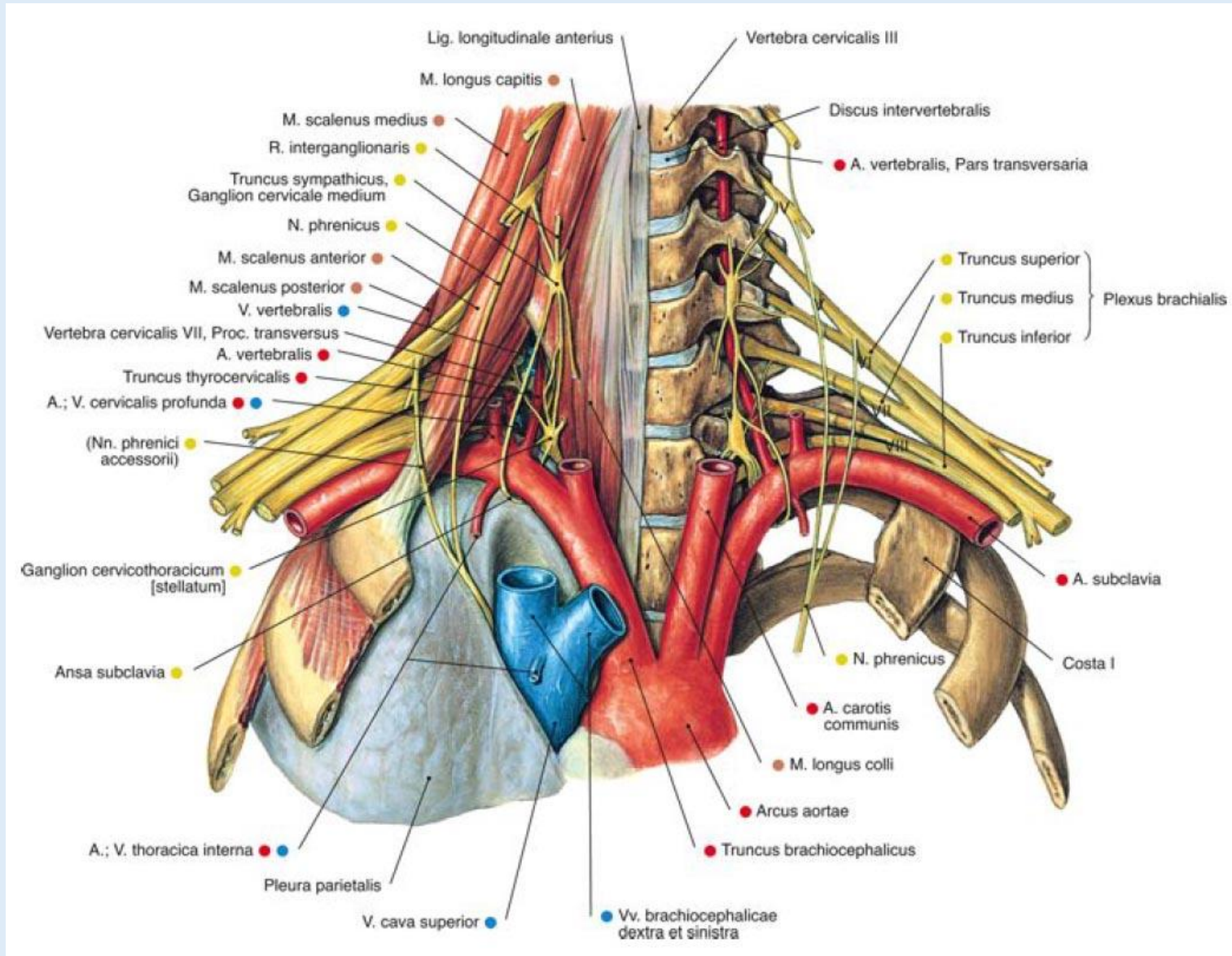
## Angulus venosus sinister

- Ductus thoracicus

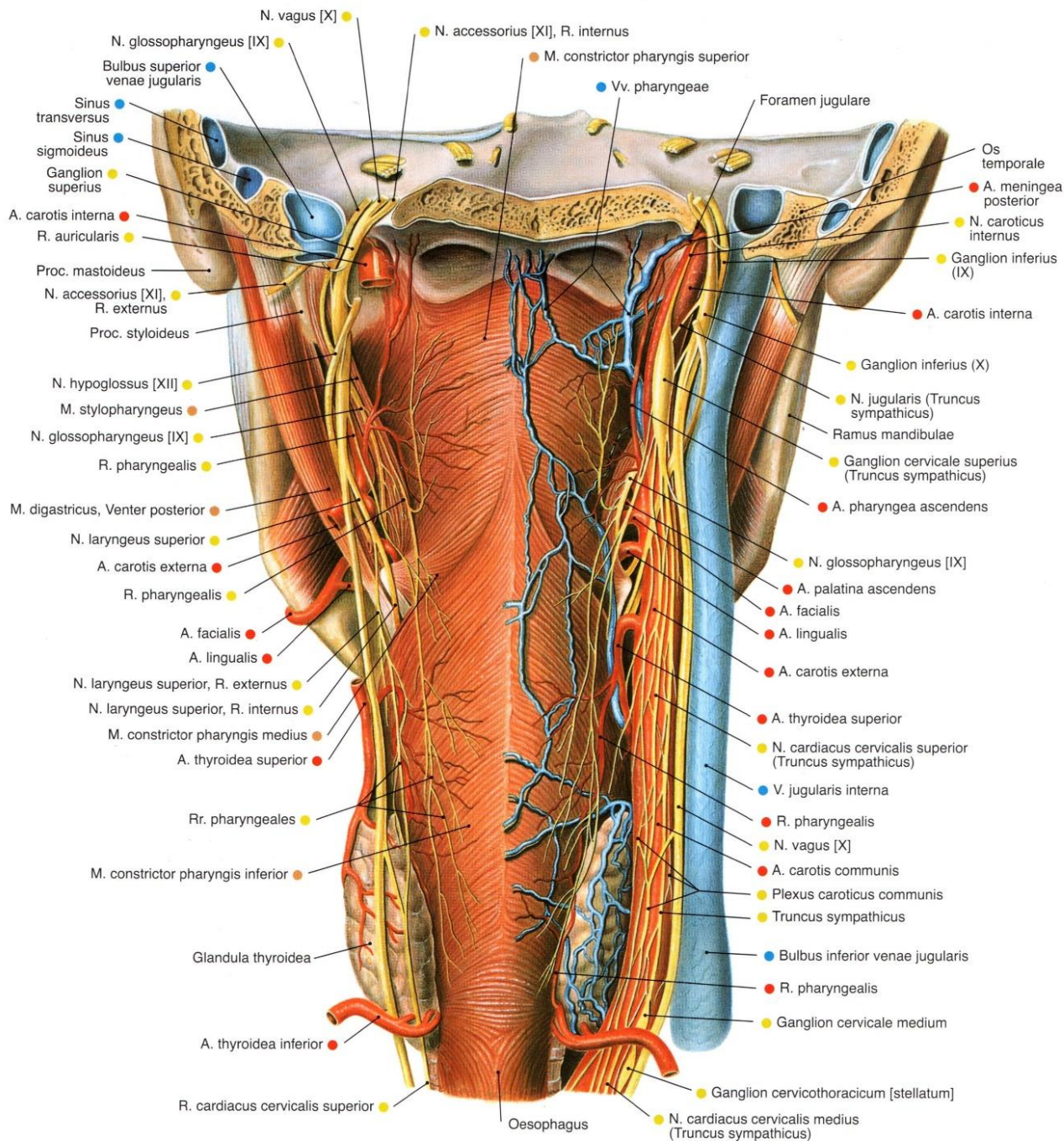
## Arteria subclavia

- Pars thoracalis
- Pars muscularis
- Pars cervicalis

# Hiatus scaleni

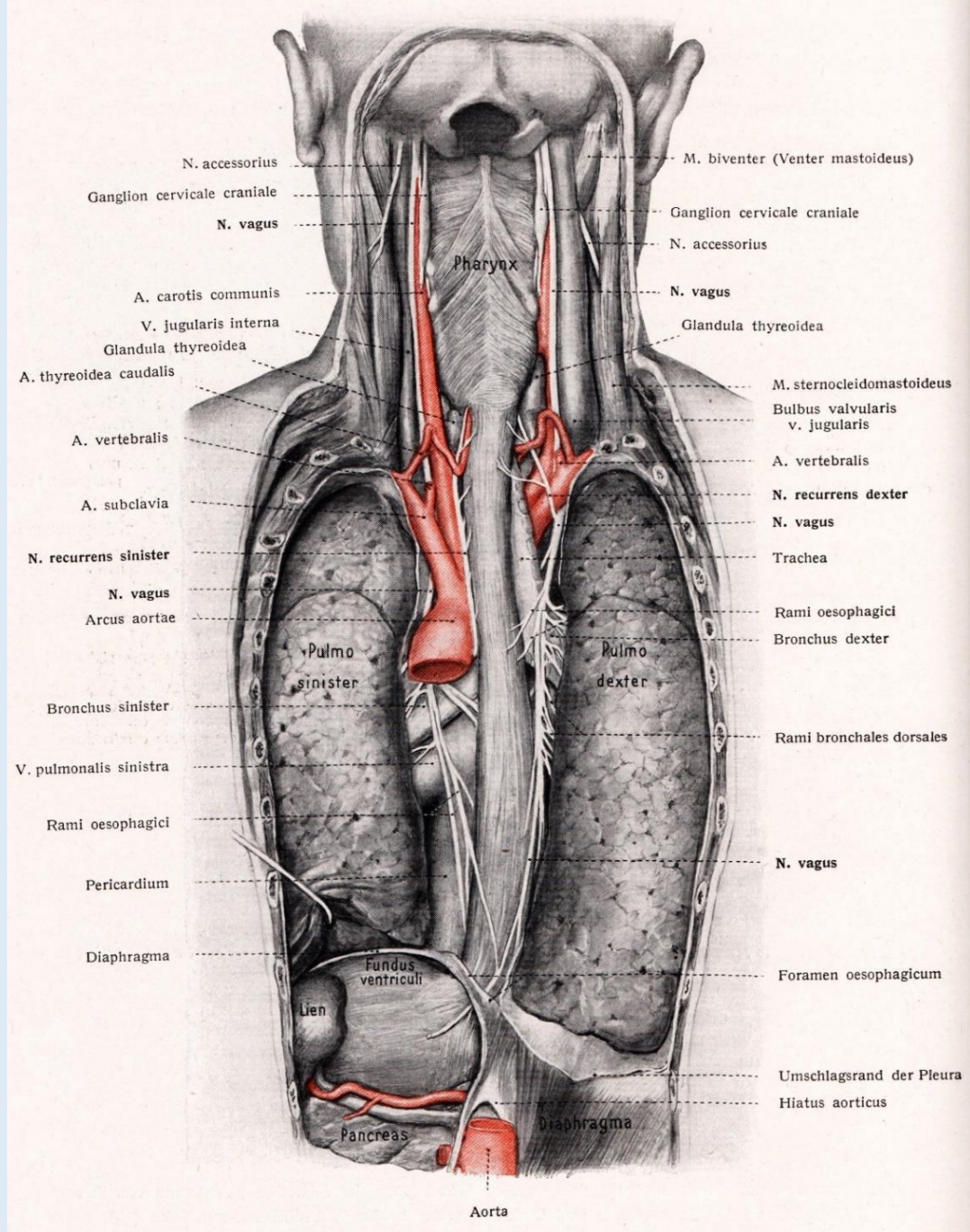


Durchtrittsstelle für Plexus brachialis und Arteria subclavia

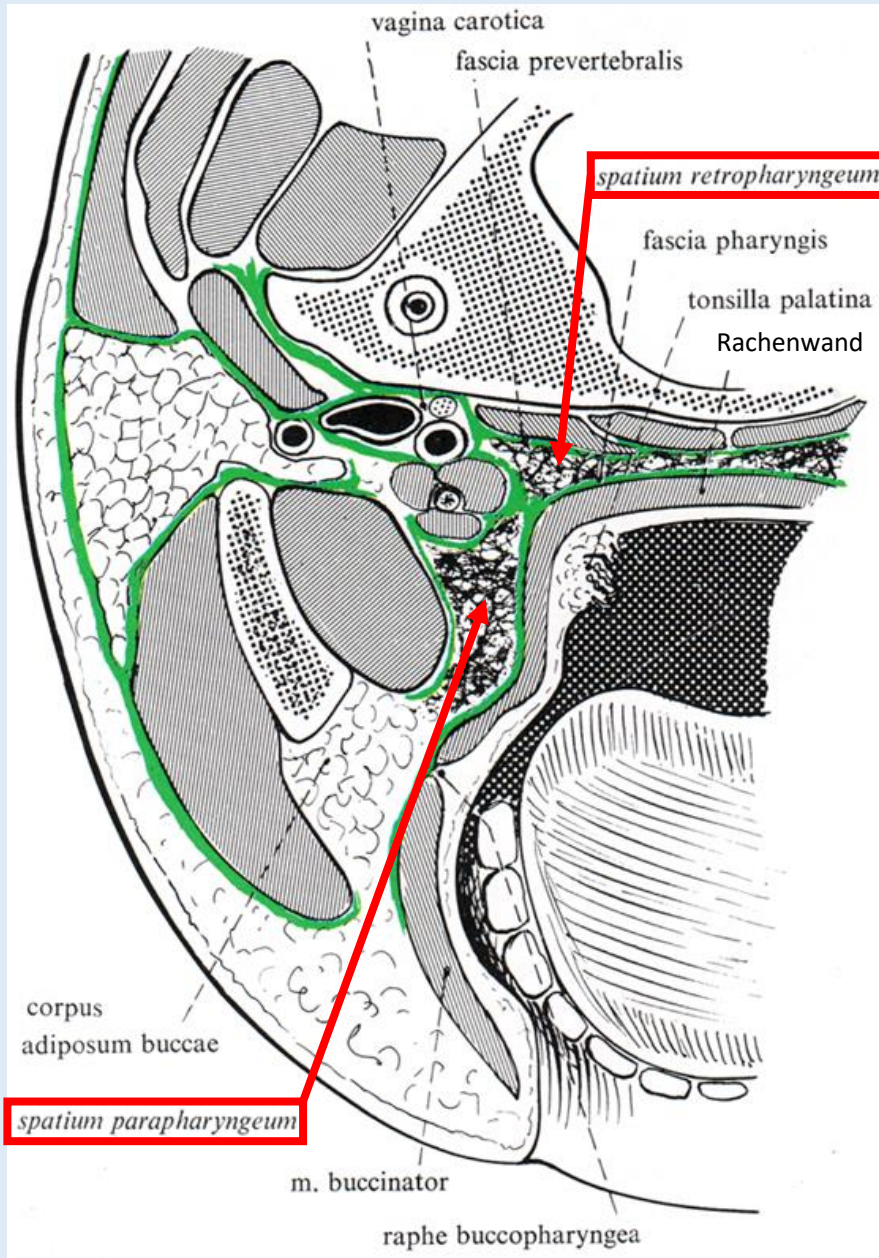


## Nachbarschaft des Rachens

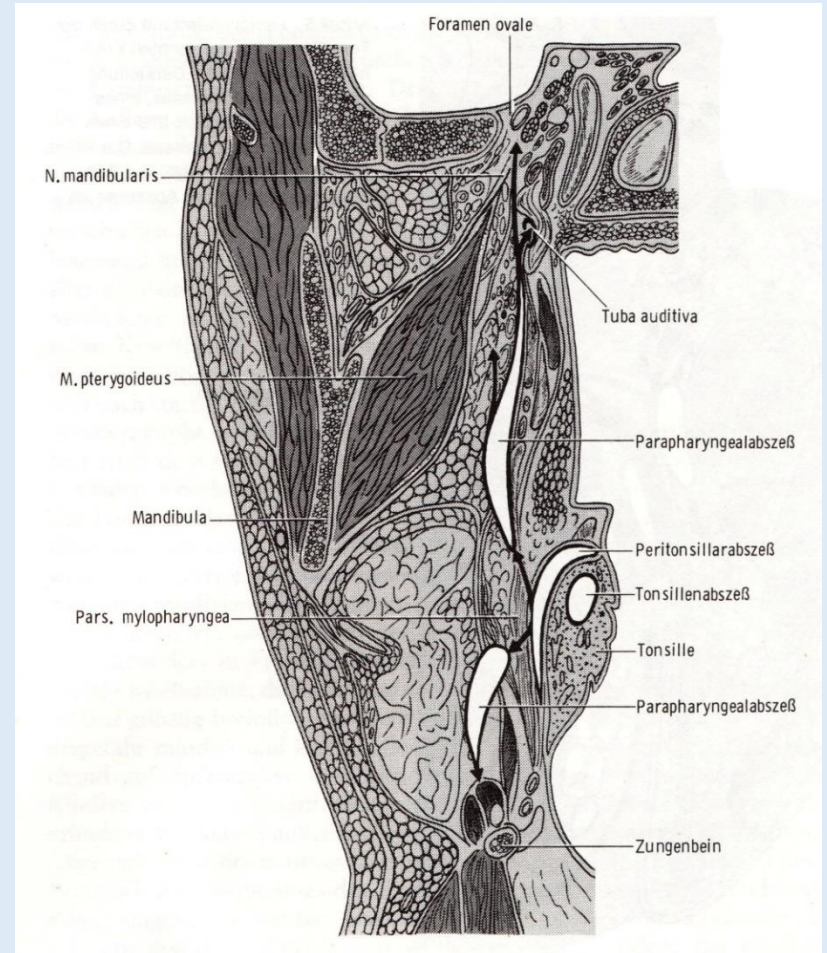
# Pharynx und Oesophagus



# Spatium para- et retropharyngeum



## Peripharyngeale Abszesse:



Berendes-Link-Zöllner

# Halsfaszien

*Wesentlicher Unterschied:*

Die Unterhautfascia wird Fascia cervicalis superficialis genannt

Die Fascia cervicalis profunda entspricht den 3 „klassischen“ Blättern

*wobei:*

das mittlere Fasciablatt (Fascia visceralis) wird noch weiter unterteilt:

Fasciablatt der infrahyoidalen Muskeln

Praetracheales Blatt

**Retropharyngeales Blatt**

das tiefe (originell praevertebrale) Blatt auch:

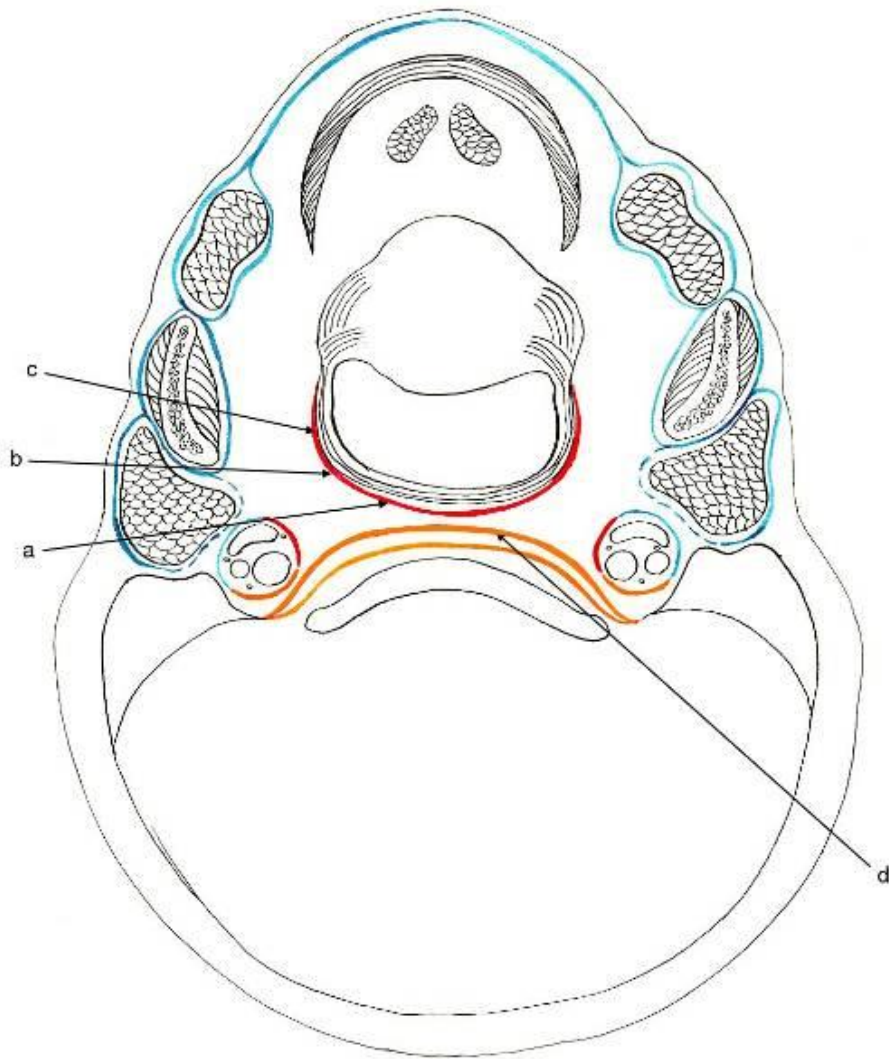
**Lamina alaris / Fascia alaris**

**Fascia praevertebralis**



# Halsfaszien

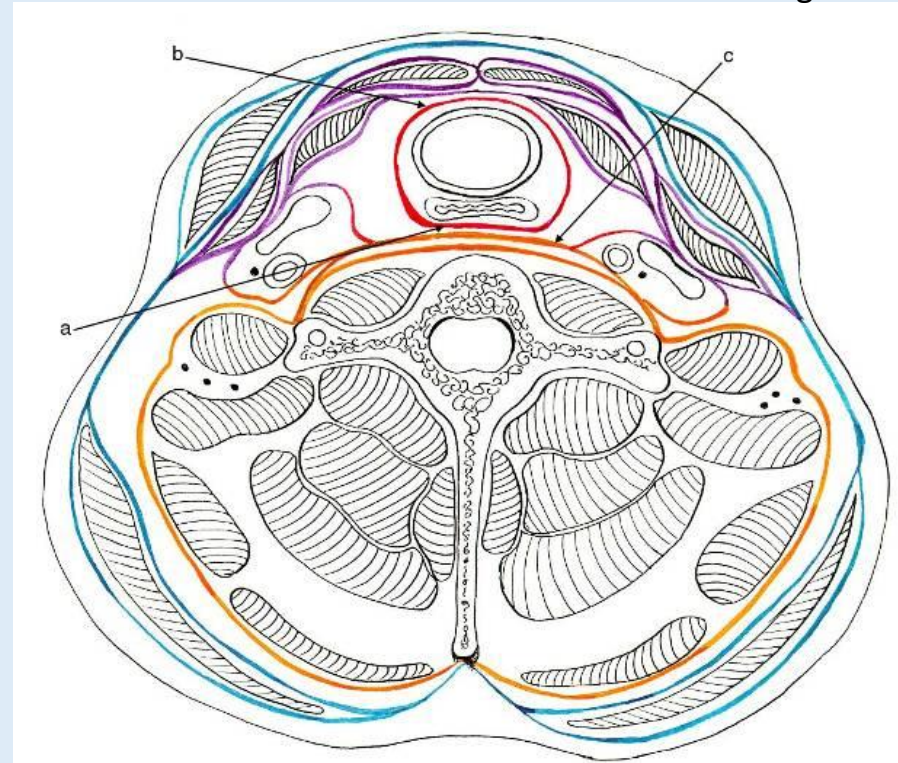
Über dem Zungenbein



Deep Layers of Cervical Fascia

- Investing Layer
- Pharyngeal Layer
- Vertebral Layer
- d- Alar fascia
- a- Retropharyngeal
- b- Lateral pharyngeal
- c- Buccopharyngeal

Unter dem Zungenbein



Deep Layers of Cervical Fascia

- Investing Layer
- Middle Layer
- Visceral Layer
- Vertebral Layer
- c- Alar fascia
- a- Retrovisceral (esophageal) fascia
- b- Pretracheal fascia
- Carotid Sheath

Aus der Vorlesung von Dr. Péter Magyar

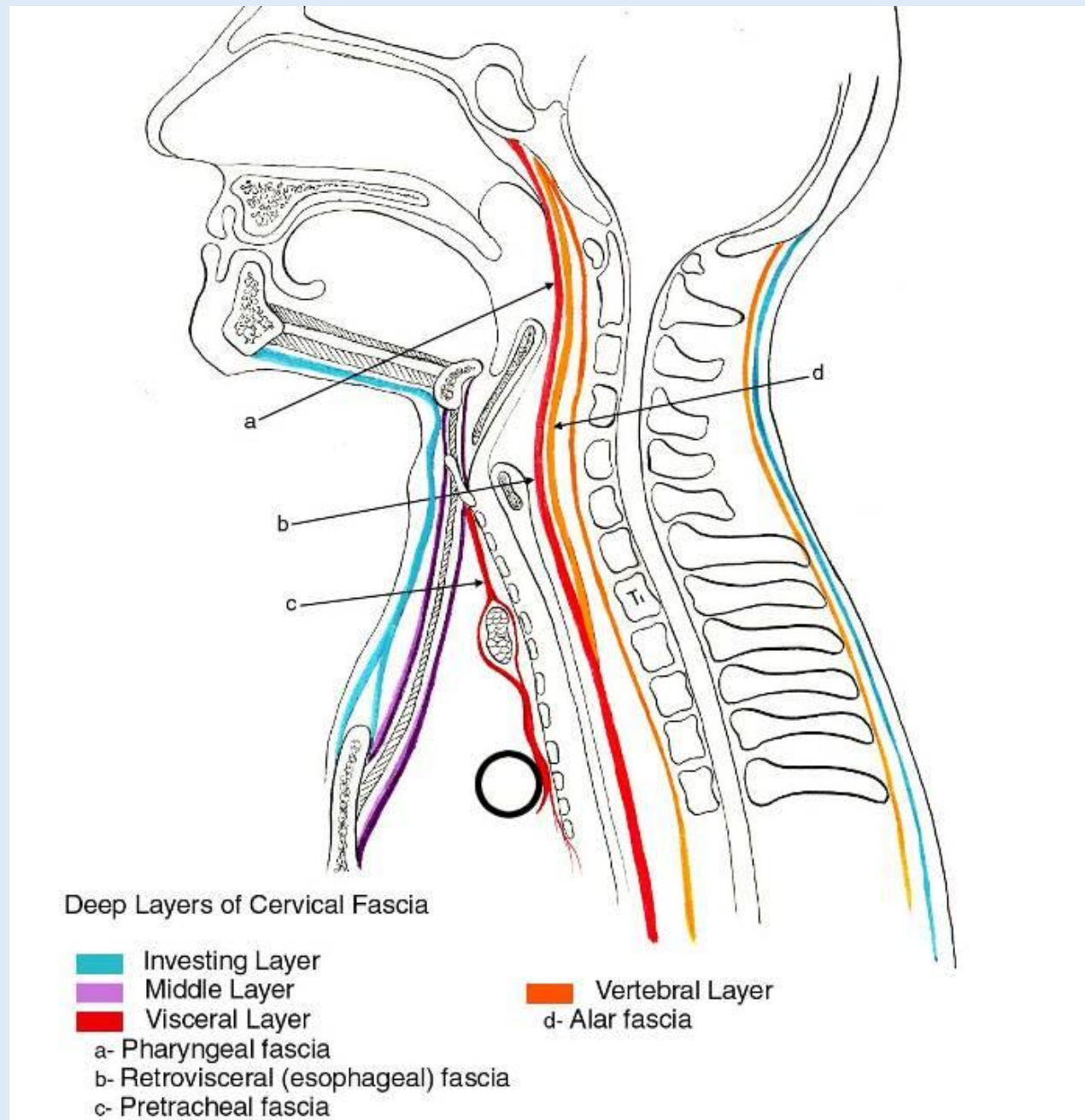
# Halsfaszien

Lamina superficialis

Lamina praetrachealis  
(visceralis)

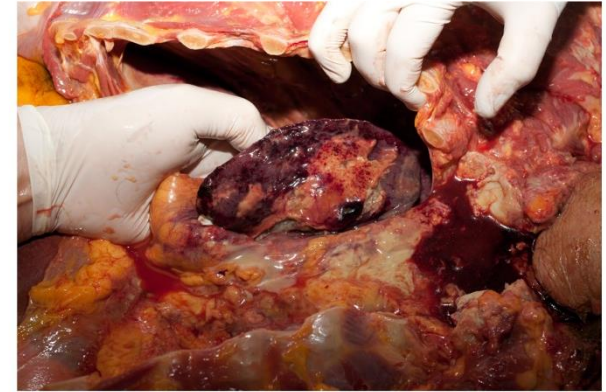
Lamina visceralis

Lamina praevertebralis

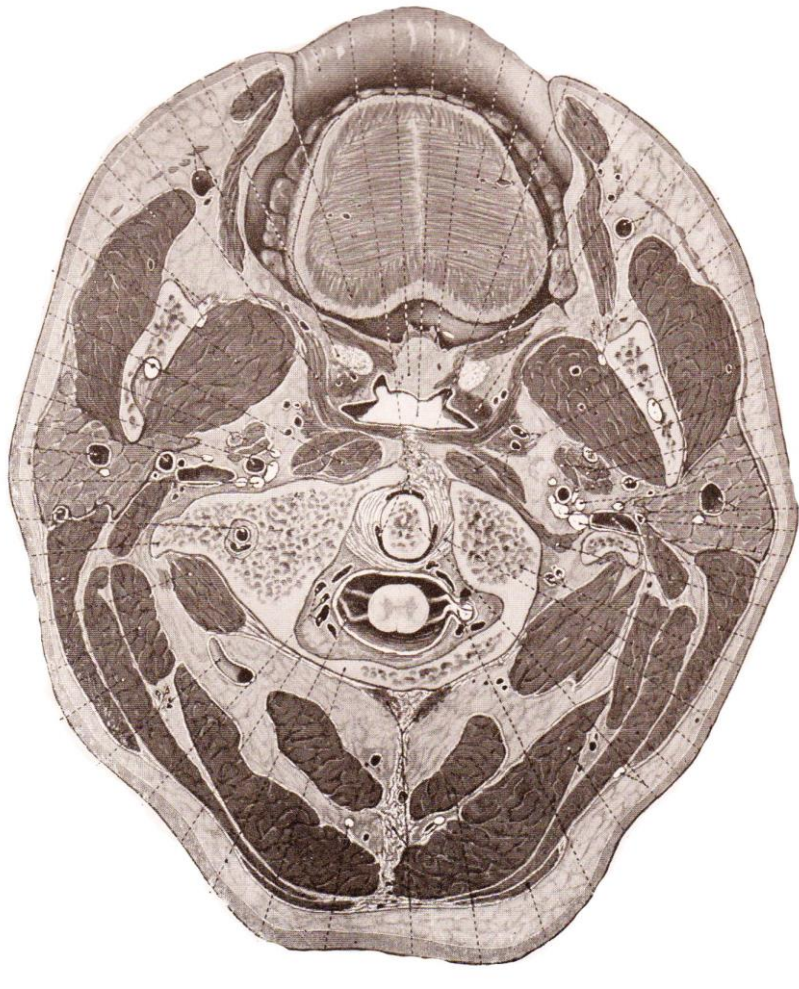


Spatium retropharyngeum bzw. retrooesophageale:  
reicht bis zur Fascia alaris; nach unten bis Th1-2

„Danger space“: beschrieben 1938. Grodzinsky et al.  
zwischen Fascia alaris und Fascia praevertebralis bis zum  
Diaphragma !!!  
Gefahr: Mediastinitis



# Querschnitt I. (C1)

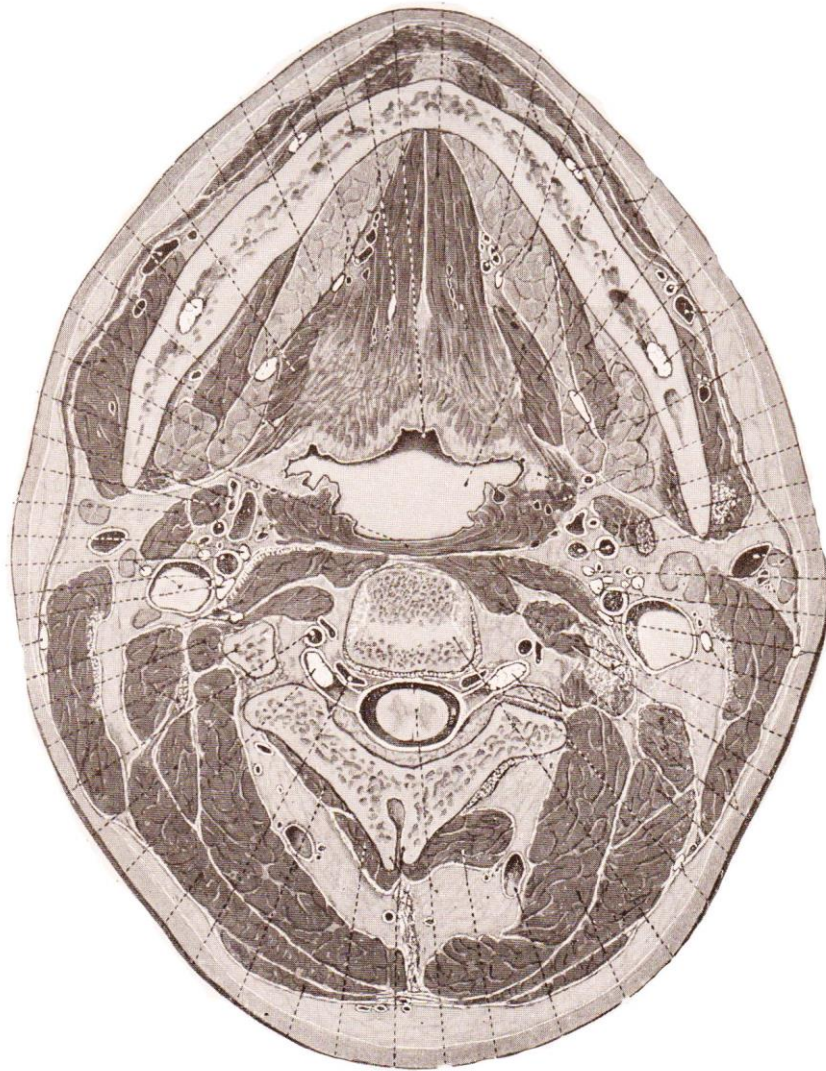


1. M. orbicularis oris
2. M. buccinator
3. Corpus adiposum buccae
4. M. masseter
5. Ramus mandibulae
6. M. pterygoideus med.
7. M. palatoglossus
8. Tonsilla palatina
9. M. palatopharyngeus
10. Isthmus faucium
11. M. constrictor pharyngis
12. Sp. retropharyngeum
13. M. longus capitis
14. Atlas
15. Dens axis
16. Glandula parotidea
17. A. carotis interna
18. A. vertebralis
19. A. carotis externa
20. M. digastricus vent. post.
21. M. semispinalis capitis
22. M. splenius capitis
23. M. trapezius
24. M. sternocleidomast.

*Signature*  
2005

Eycleshymer-Schoemaker

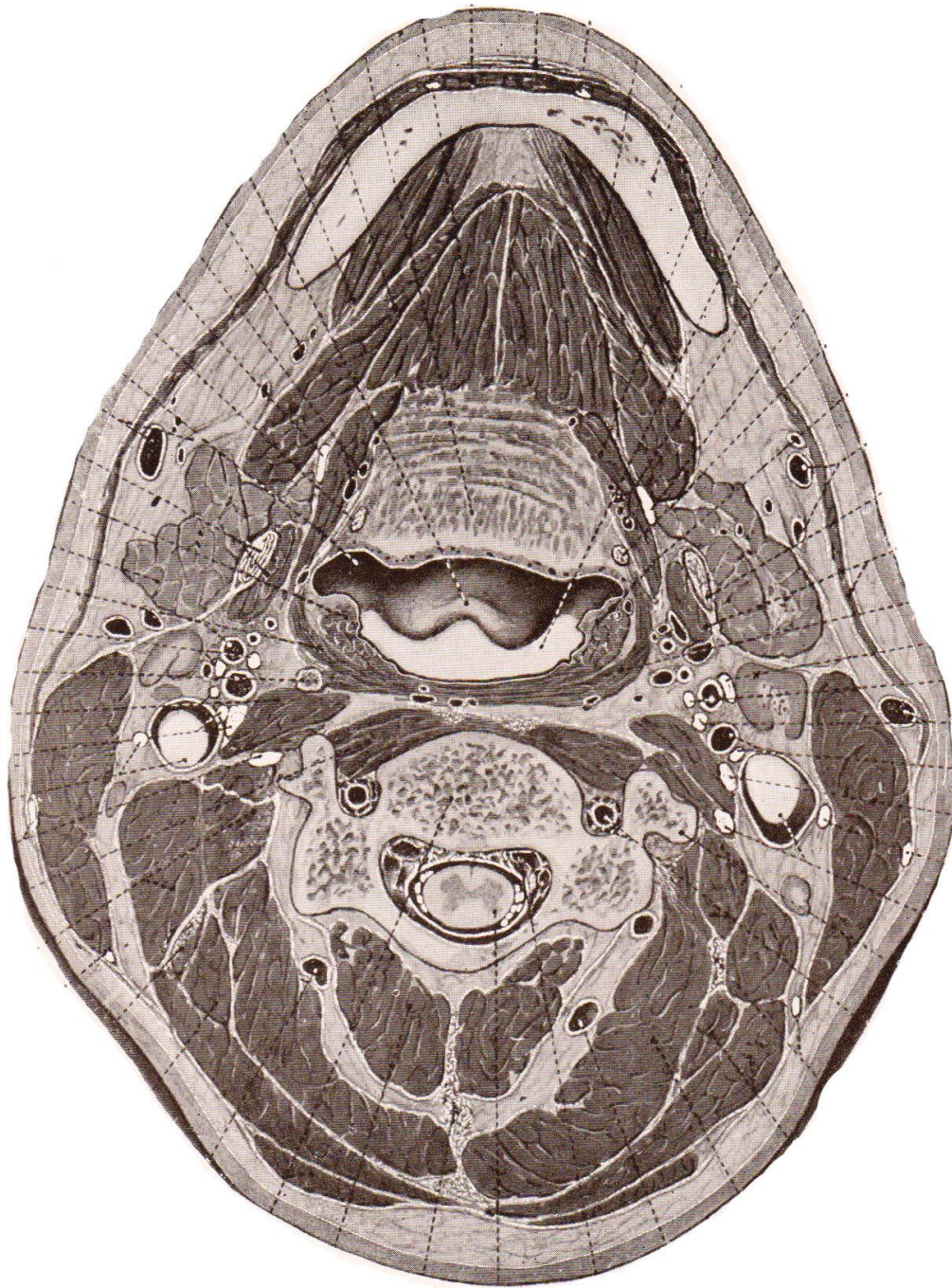
## Querschnitt II. (C3)



1. Mandibula
2. M. genioglossus
3. A. lingualis
4. M. hyoglossus
5. M. mylohyoideus
6. Radix linguae
7. Glandula submandibularis
8. A. facialis
9. Pharynx, pars oralis
10. Spatium retropharyngeum
11. A. carotis externa
12. A. vertebralis
13. A. carotis interna
14. Art. zygapophysialis
15. Glandula parotidea
16. M. longus colli
17. M. semispinalis cervicis
18. M. sternocleidomastoideus
19. M. trapezius
20. M. splenius capitis
21. M. longissimus capitis
22. M. levator scapulae
23. M. semispinalis capitis

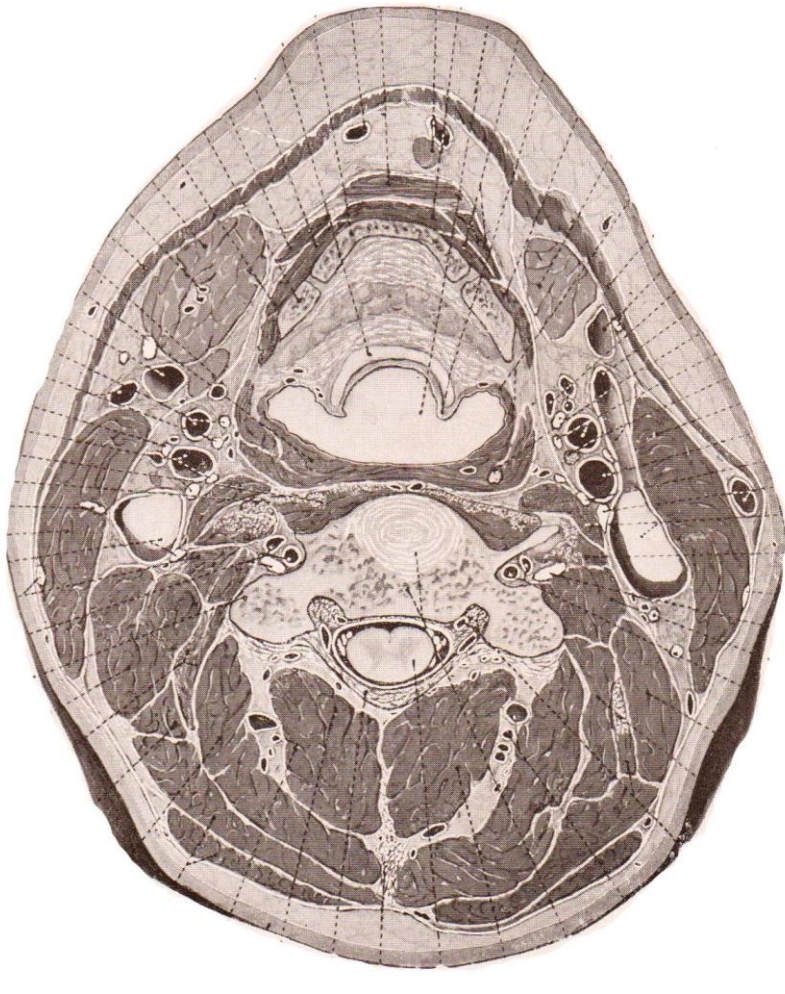
Eycleshymer-Schoemaker

*Signature*  
2005



Querschnitt III. (C3-C4)

## Querschnitt IV. (C4)

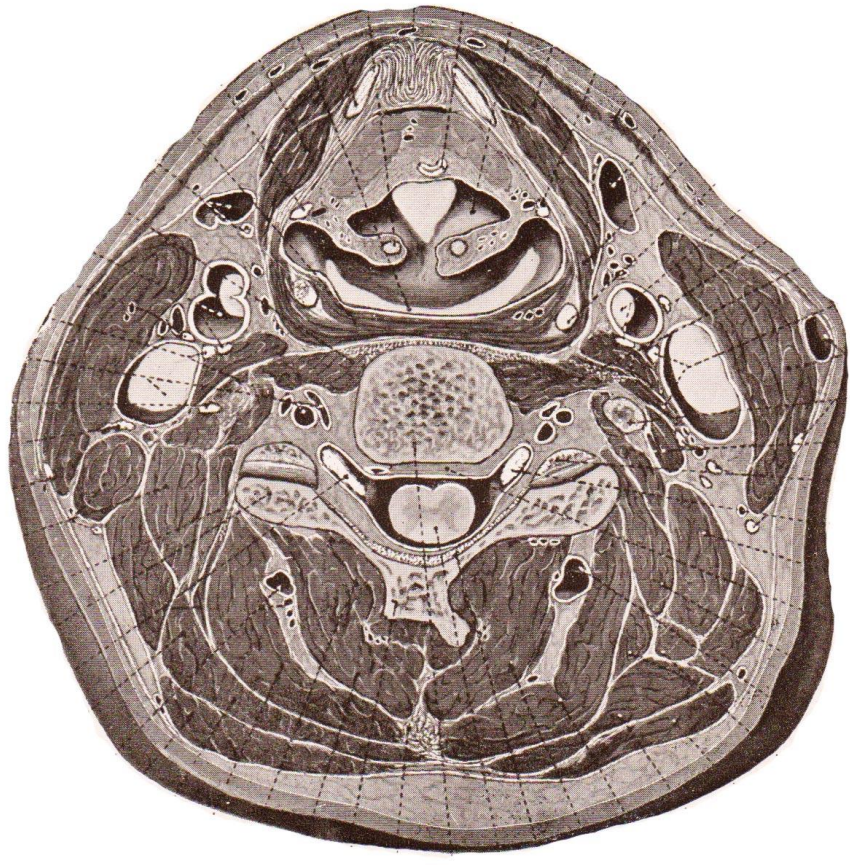


Eycleshymer-Schoemaker



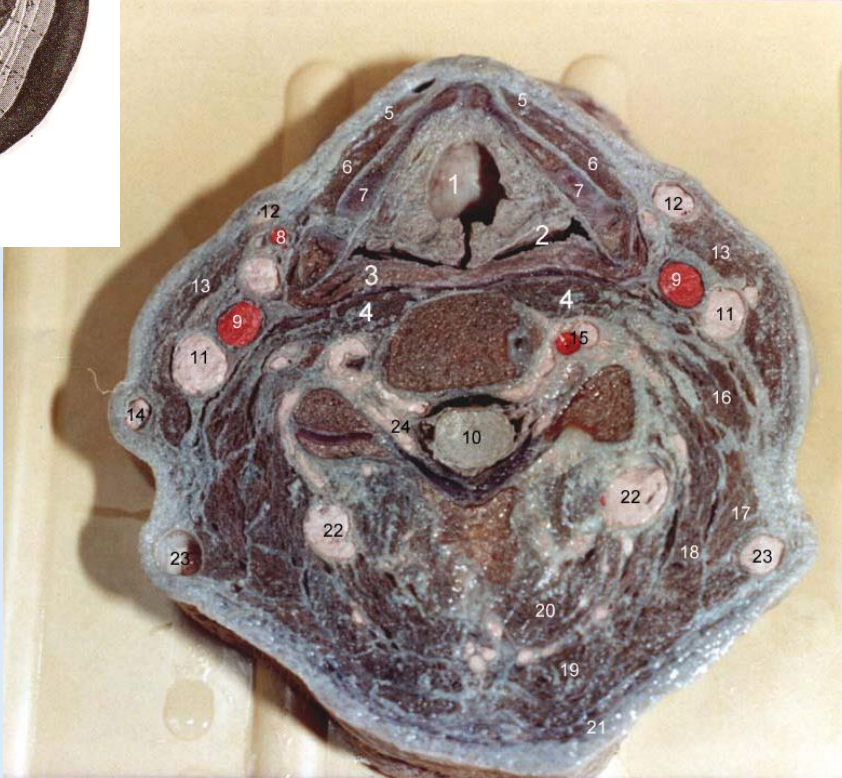
1. Glandula submandibularis
2. Aditus laryngis
3. M. constrictor pharyngis
4. Os hyoideum
5. A. car. communis
6. V. jugularis int.
7. M. sternocleidomastoideus
8. M. semispinalis cervicis
9. M. semispinalis capitis
10. M. splenius cerv. et cap.
11. M. longus capitis et colli
12. A. vertebralis
13. A. thyroidea superior
14. V. cervicalis profunda
15. V. occipitalis
16. V. jugularis externa
17. V. auricularis post.
18. V. facialis
19. Platysma
20. M. mylohyoideus
21. M. geniohyoideus
22. Corp. adiposum laryngis
23. Epiglottis
24. Cornu sup. cart. thy.
25. M. trapezius
26. M. levator scapulae
27. Plexus venosus vert. int.

*Signature*  
2005



# Querschnitt V. (C5)

Eycleshymer-Schoemaker

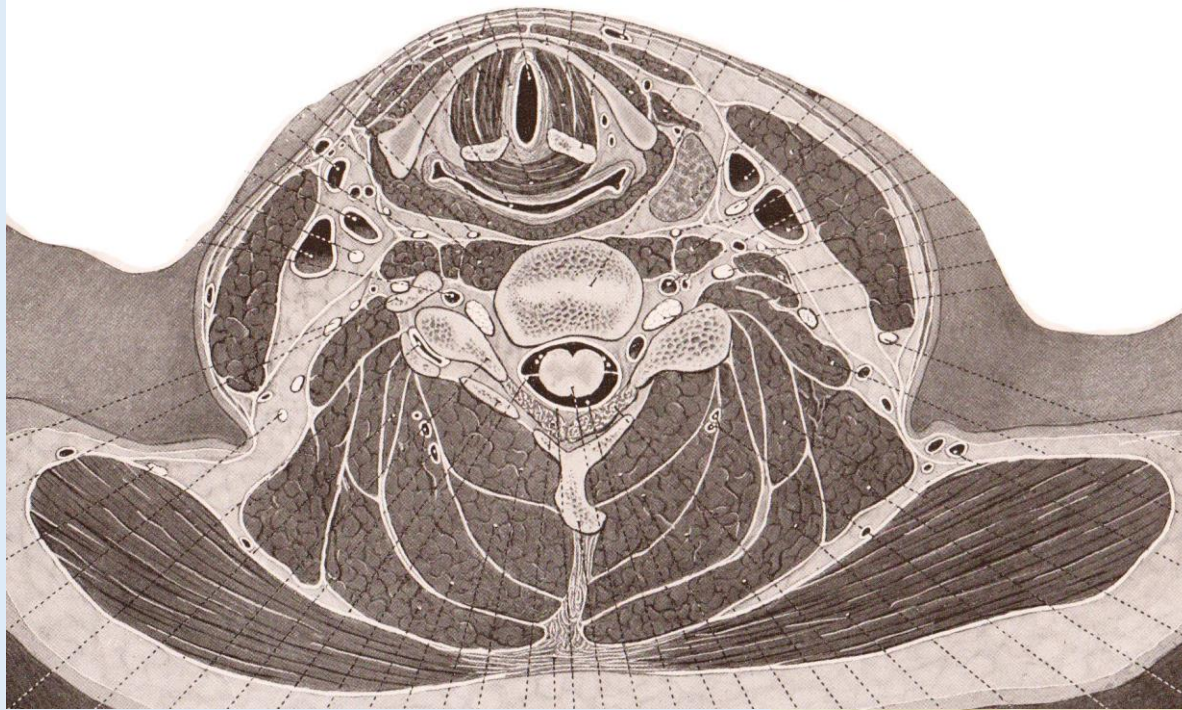


- 1. Larynx
- 2. Pharynx
- 3. M. constrictor pharyngis inf.
- 4. M. longus colli
- 5. M. sternohyoideus
- 6. M. omohyoideus
- 7. Cartilago thyroidea
- 8. A. thyroidea sup.
- 9. A. carotis comm.
- 10. Gericvelö
- 11. V. jugularis int.
- 12. V. jugularis ant.
- 13. M. sternocleidomastoideus
- 14. V. jugularis ext.
- 15. A. et v. vertebralis
- 16. M. scalenus medius
- 17. M. levator scapulae
- 18. M. splenius cervicis et capitis
- 19. M. semispinalis capitis
- 20. M. semispinalis cervicis
- 21. M. trapezius
- 22. V. cervicalis profunda
- 23. V. occipitalis
- 24. Plexus venosus vert. int.

*Signature*  
2005



## Querschnitt VI. (C5-6)



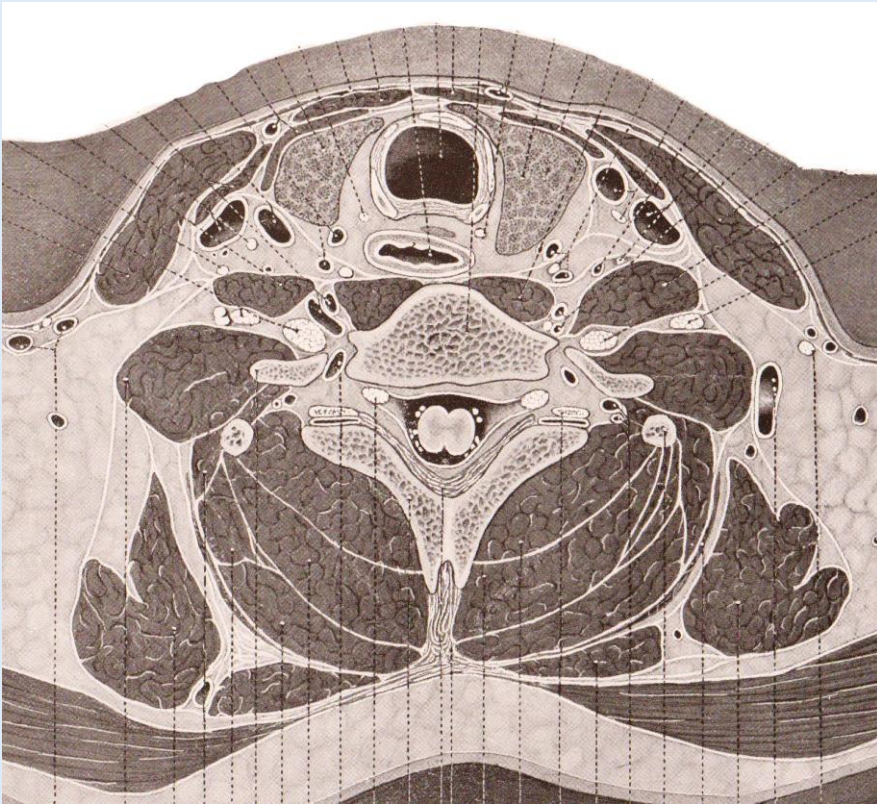
Eycleshymer-Schoemaker



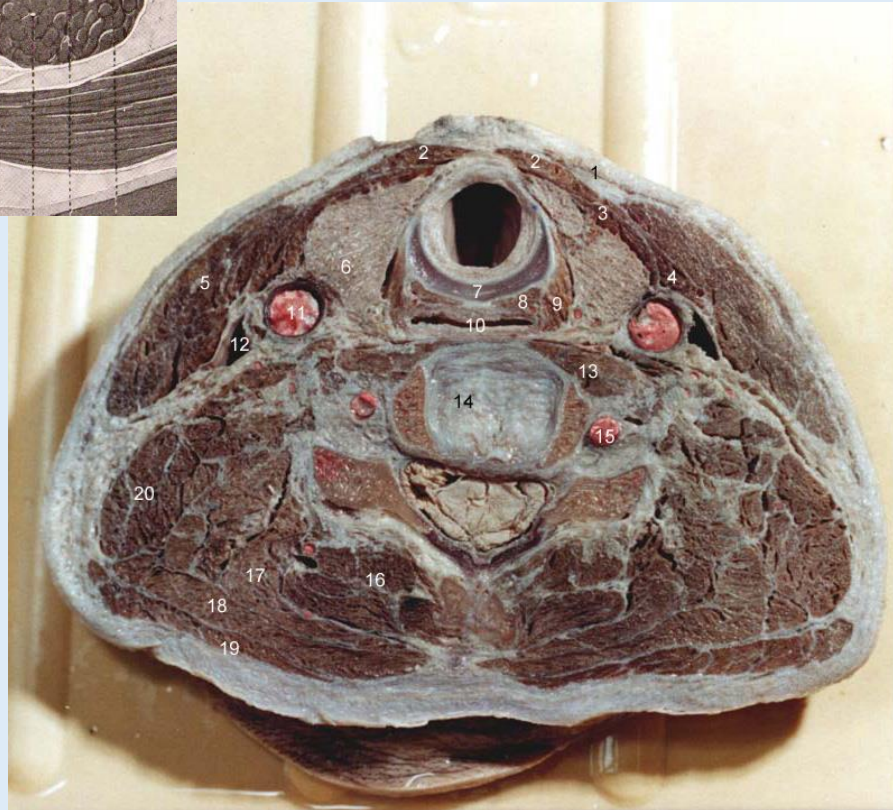
1. Platysma
2. M. sternohyoideus
3. M. omohyoideus
4. M. thyrohyoideus
5. Cartilago thyroidea
6. Cartilago arytenoidea
7. Rima glottidis
8. Recessus piriformis  
(közöttük cavitas pharyngis)
9. M. const. pharyngis inf.
10. M. longus colli
11. A. carotis comm.
12. A. thyroidea sup.
13. V. jugularis int.
14. M. sternocleidomastoideus
15. A. vertebralis
16. M. semispinalis cervicis
17. M. semispinalis capitis
18. M. splenius cerv. et capitis
19. M. trapezius
20. M. levator scapulae
21. Mm. scaleni
22. Art. zygapophysialis

*Székely Miklós*  
2005

## Querschnitt VII. (C6-7)



Eycleshymer-Schoemaker



1. Platysma
2. M. sternohyoideus
3. M. thyrohyoideus
4. M. omohyoideus
5. M. sternocleidomastoideus
6. Glandula thyroidea
7. Cartilago cricoidea
8. M. cricoarytenoideus post.
9. Pars cricopharyngea m. constrictor pharyngis
10. Pharynx
11. A. carotis comm.
12. V. jugularis int.
13. M. longus colli
14. Discus intervertebralis
15. A. vertebralis
16. M. semispinalis cervicis
17. M. semispinalis capitis
18. M. splenius cervicis et cap.
19. M. trapezius
20. M. levator scapulae

*Eycleshymer Schoemaker*  
2005