



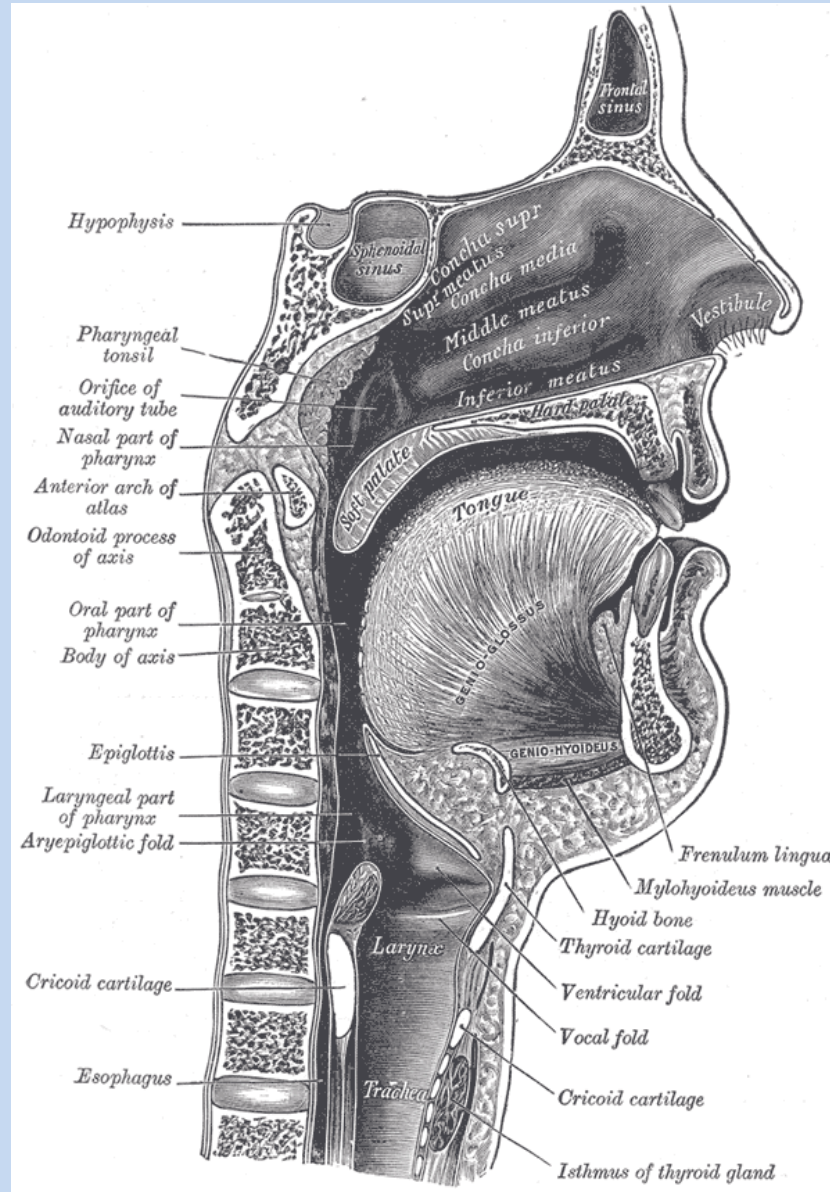
Gaumen, Rachen, peripharingeale Räume

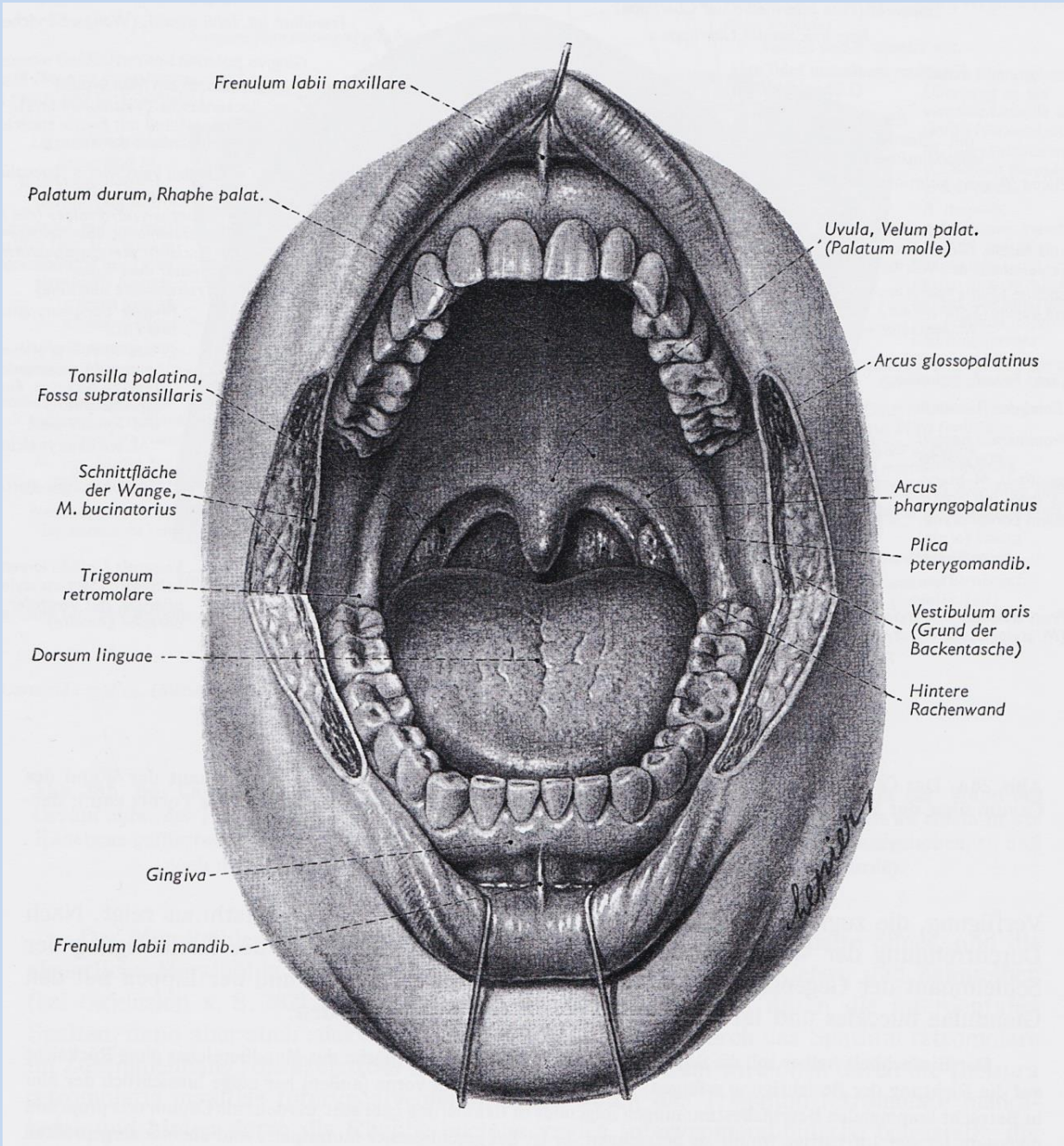
Wer seinen Mund und seine Zunge bewahrt, der bewahrt seine Seele vor Angst.

Ph.D., Dr. Dávid Lendvai

Sprueche 21:23

TOPOGRAPHIE





Teile der Mundhöhle

1. Vestibulum

Grenzen :

- Lippen und Wangen (Bucca)
- Zahnbögen

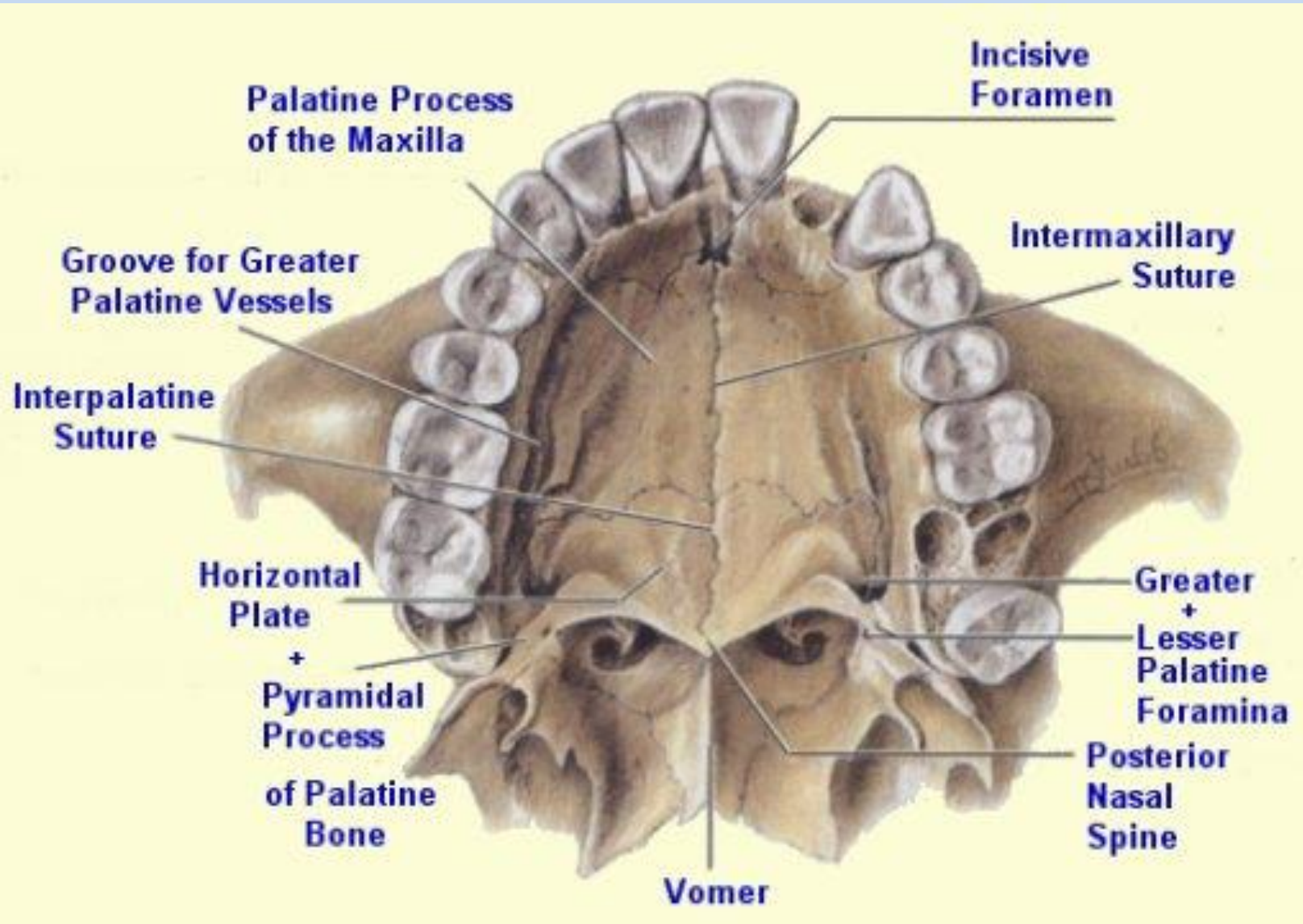
2. Cavum proprium

Grenzen:

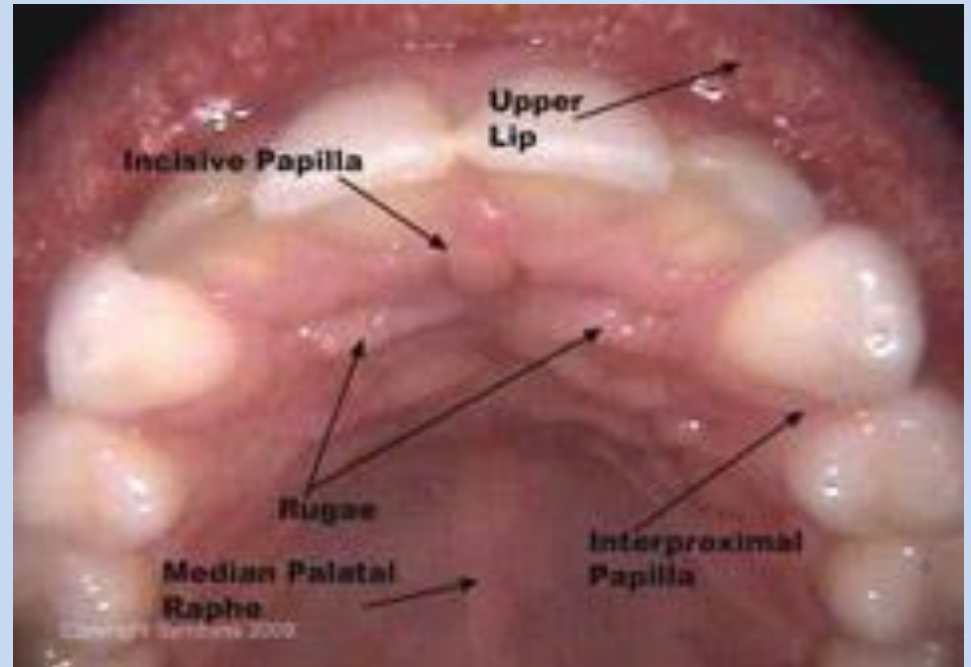
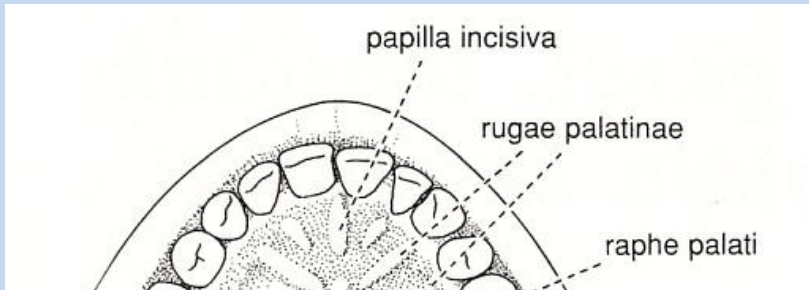
- **Munddach: harter und weicher Gaumen**
- Mundboden: diaphragma der Mundhöhle (M. mylohoïd)
- antero-lateral: Zahnbögen
- posterior: isthmus faucium



Munddach: harter und weicher Gaumen

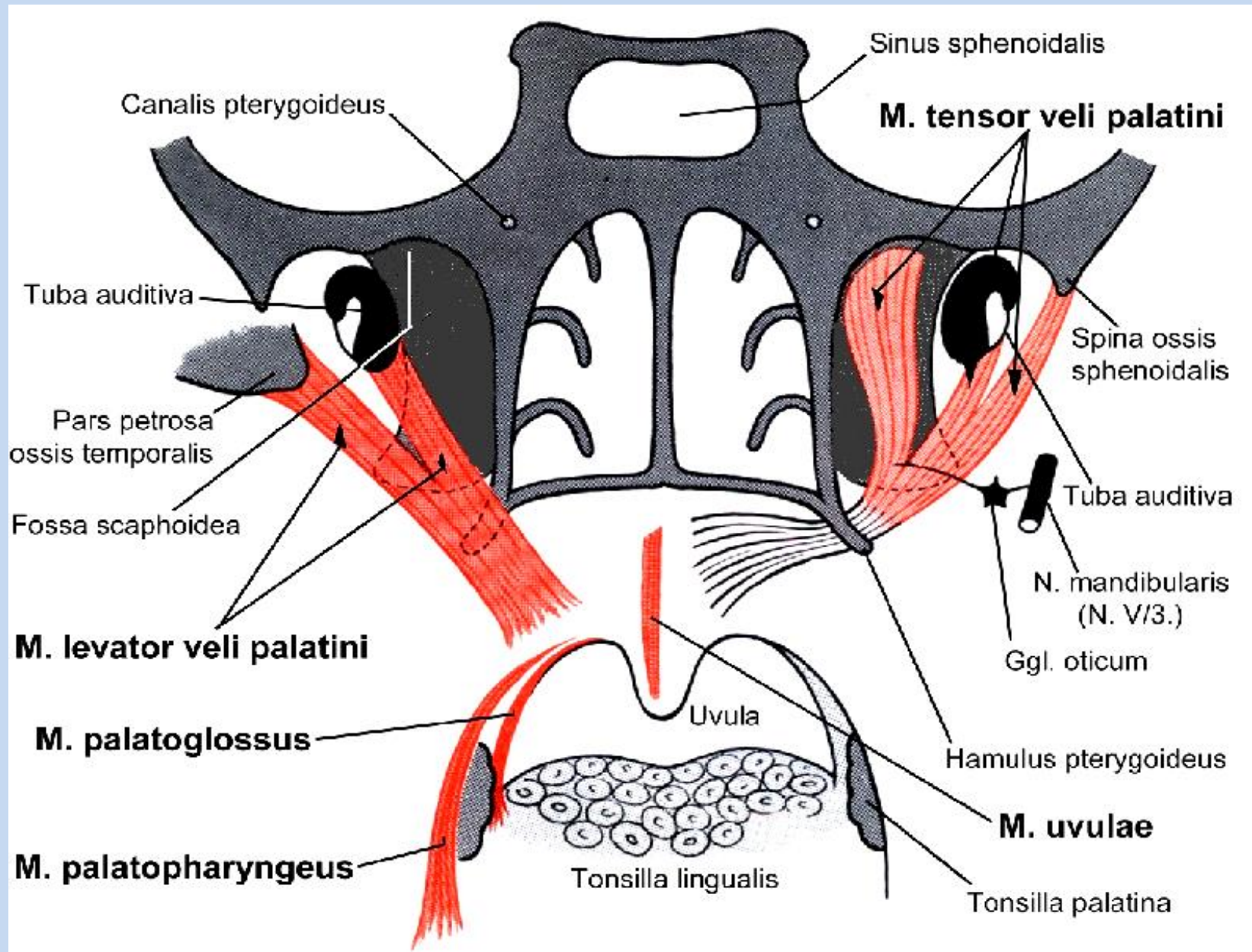


Harter Gaum

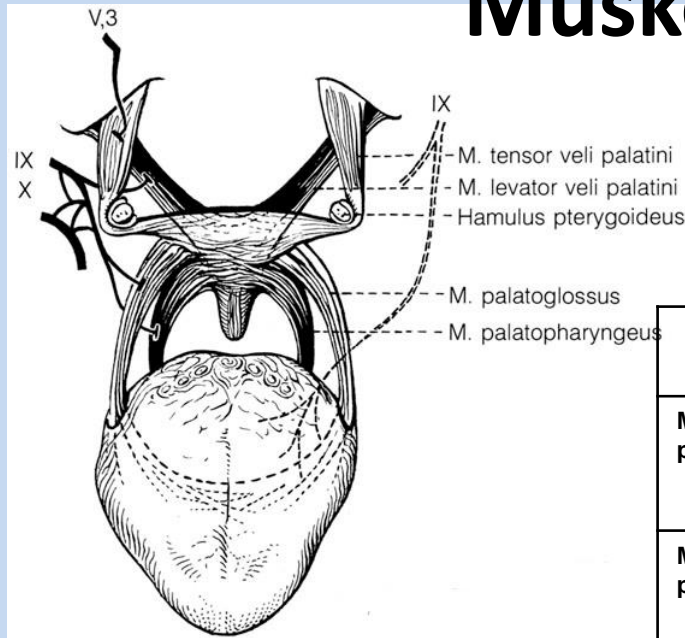


- incisive papilla
- palatine rugae
- palatine raphe
- torus

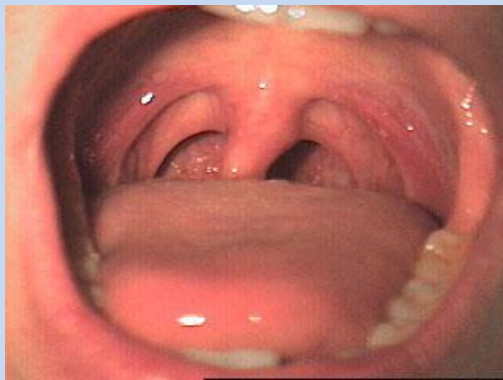
Weicher Gaum



Muskeln des Gaumensegels

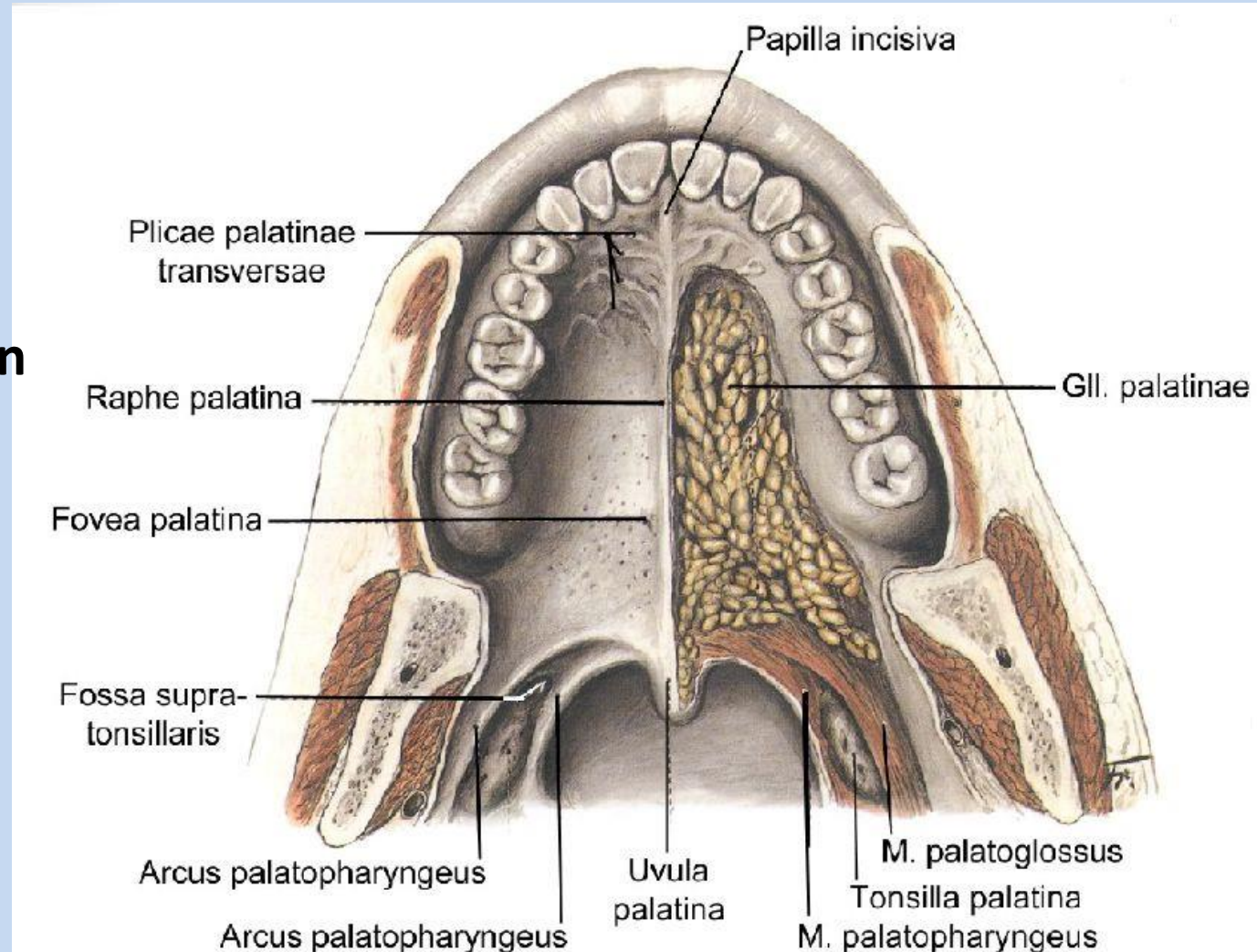


	Ursprung	Ansatz	Funktion	Innervation
M. levator veli palatini	Unterseite des Pars petrosa, Cartilago Tubae auditivae	Aponeurosis palatina	Spannt und hebt das Velum, öffnet die Tuba, schließt den Nasopharynx	R. pharyngeus nervi vagi (X.)
M. tensor veli palatini	Lamina med. Proc. pterygoidei, Fossa scaphoidea, Ala major, Lam. membranacea tubae --Um den Hamulus pter.	Aponeurosis palatina	Spannt und verformt das Velum, öffnet die Tuba	N. musculi tensoris veli palatini (ex V/3)
M. palatopharyngeus	Aponeurosis palati, Hamulus pter., Lamina med. proc. pter.	Seitl. Rachenwand bis zur Raphe	Schlundheber, Grundlage für Arcus palatopharyngeus	N. glosso-pharyngeus (IX.)
M. palatoglossus	Abspaltung aus dem M. transversus linguae	Aponeurosis palatina	Senkt das Velum, schließt die Schlundenge, zieht den hinteren Teil der Zunge hoch, Grundlage für Arcus palatoglossus	Rr. pharyngei (ex IX., ggf. X.)
M. uvulae	Aponeurosis palatina	Schleimhaut an der Uvulaspitze	Verkürzt die Uvula, bewegt seitlich	Rr. pharyngei (ex X.)



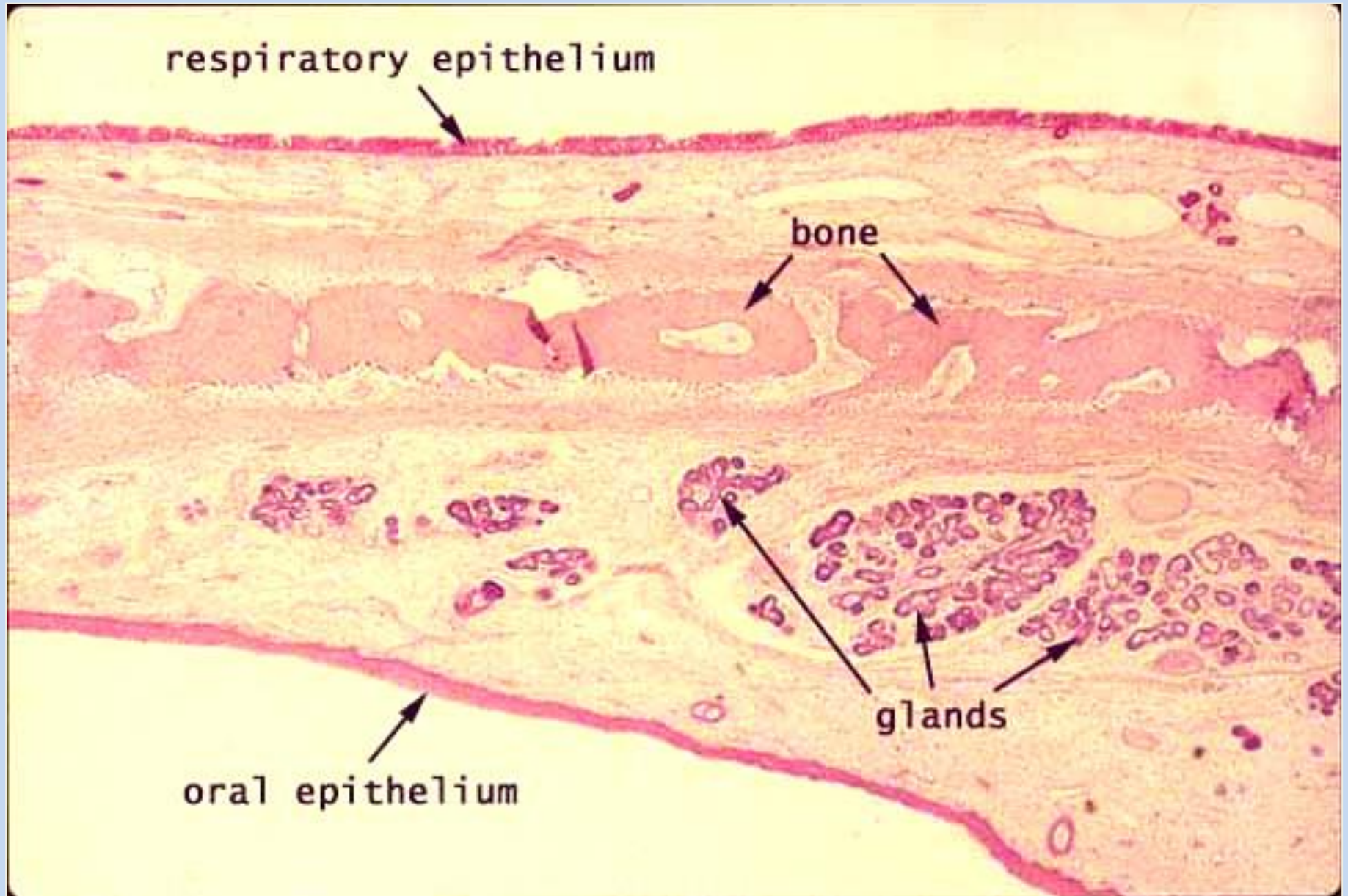
harter und weicher Gaumen

- Mukosa
- Drüsen
- Knochen / Muskeln

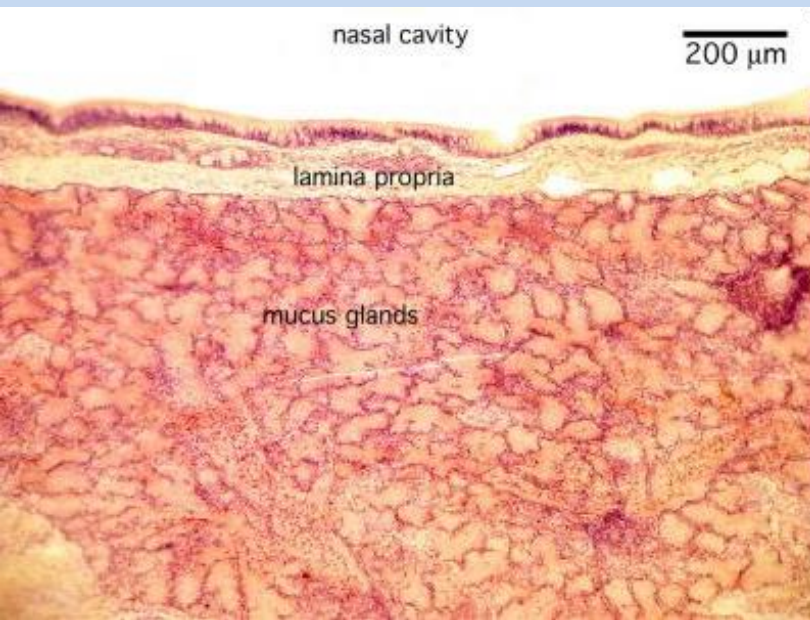


Histologie

Mucoperiosteum



Histologie des weicher Gaumens



Nasenoberfläche

-mehrröhiges hochprismatisches Epithel + Cilien

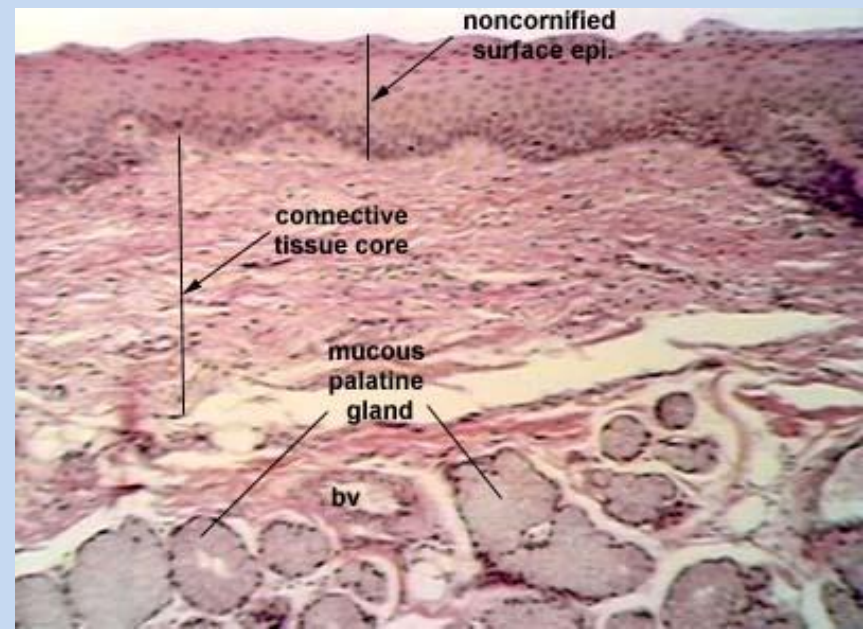
Lamina propria

Schleimdrüsen

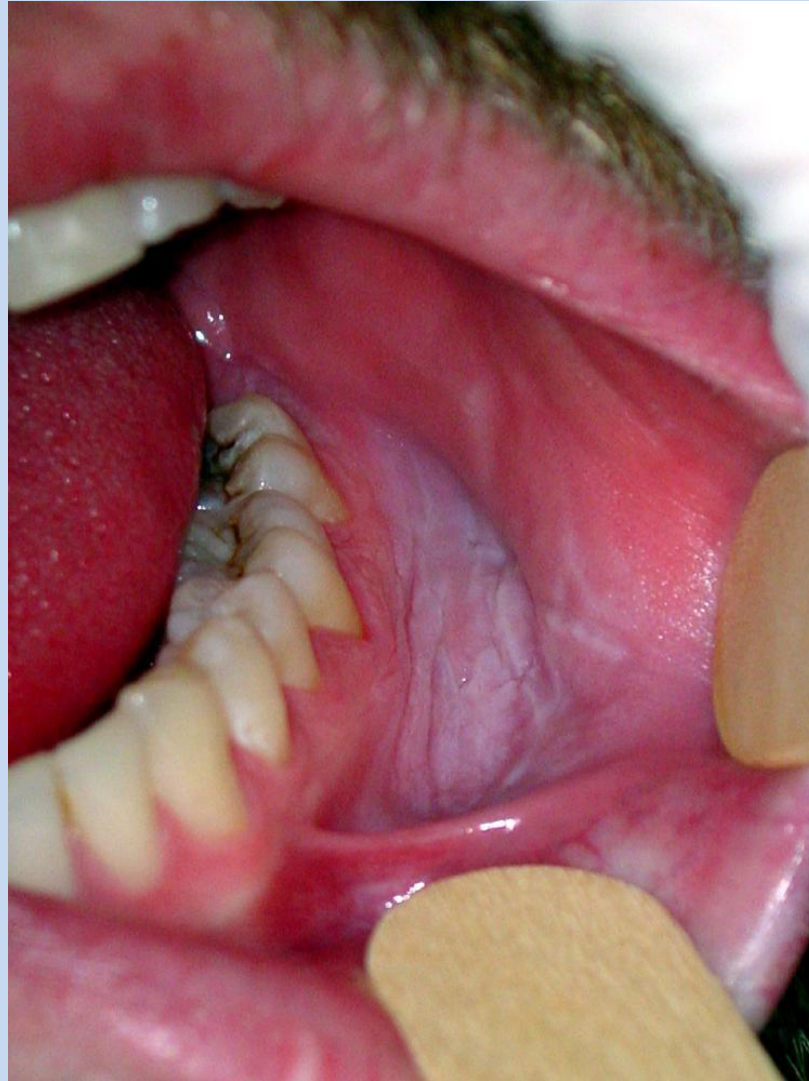
quergestreiften Muskulatur

Mundoberfläche

- MUPE



Leukoplakia (precancerous stage!!!)

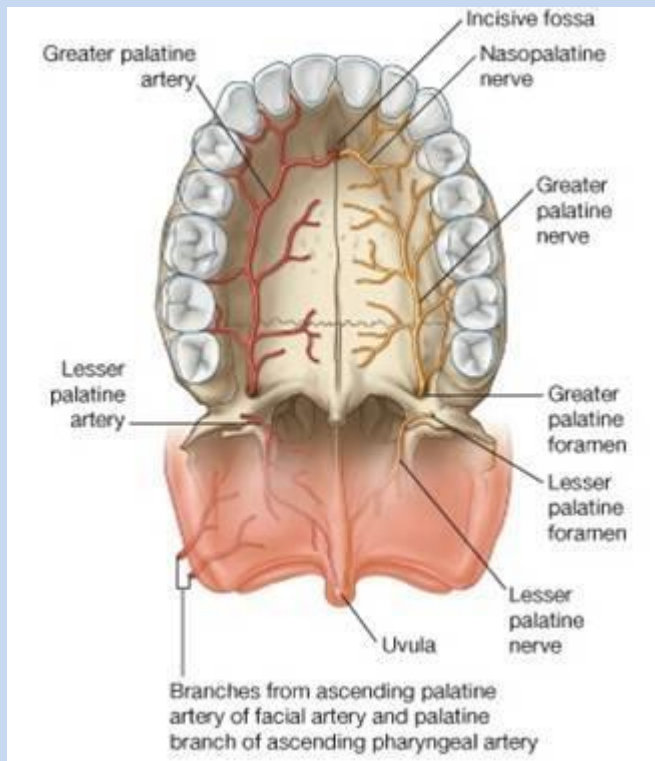


Allergie

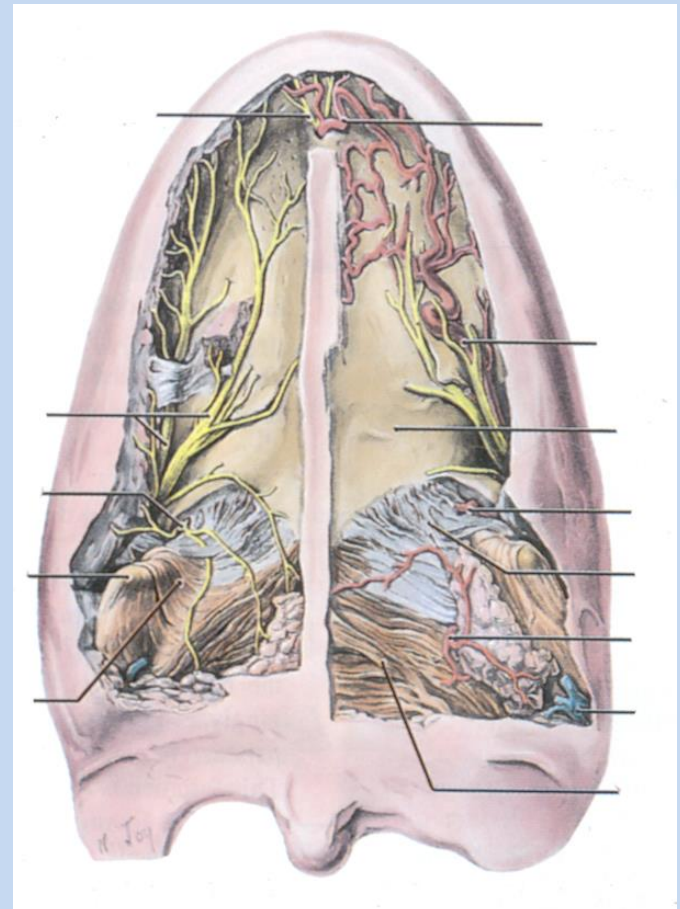


Blutversorgung und Innervation des harten und weichen Gaumens

- N. palatinus major und minor
(aus N. maxillary)
- N. nasopalatinus

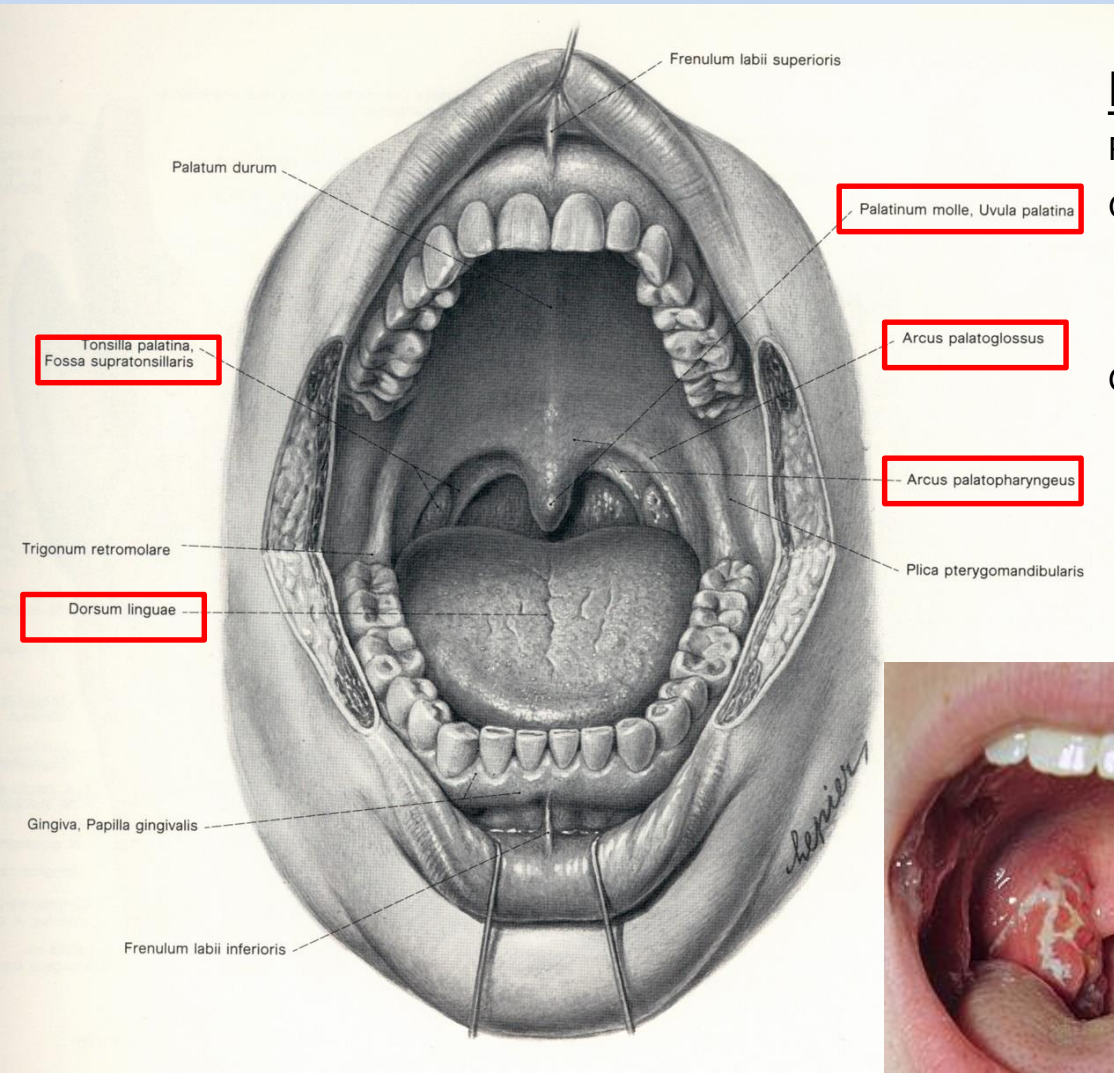


A. palatina major und minor



Isthmus faucium (Schlundenge)

Übergang zwischen Mundhöhle und Rachen



Begrenzung:

Pars follicularis linguae

Gaumenbögen:

- Arcus palatoglossus
 - Arcus palatopharyngeus
- } Fossa tonsillaris

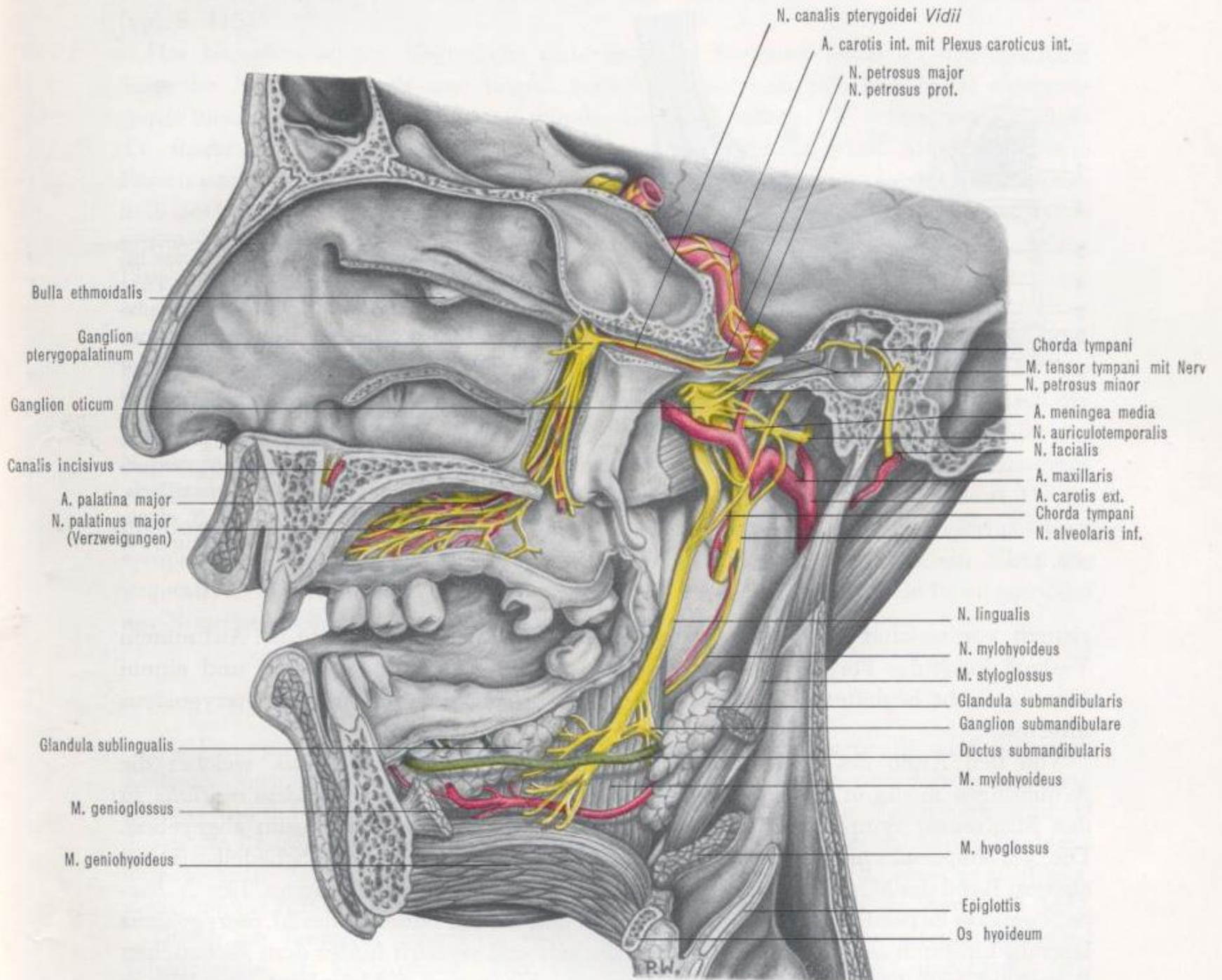
Gaumensegel: Velum palatinum mit Uvula



Klinik: Tonsillitis follicularis
Blutversorgung der Tonsilla:

1. A. palatina ascendens
2. A. pharyngea ascendens
3. Rr. tonsillares der A. lingualis
4. A. palatina descendens

Nn. lymph. submandibulares



N. canalis pterygoidei Vidii

A. carotis int. mit Plexus caroticus int.

N. petrosus major

N. petrosus prof.

Bulla ethmoidalis

Ganglion pterygopalatinum

Ganglion oticum

Canalis incisivus

A. palatina major

N. palatinus major (Verzweigungen)

Glandula sublingualis

M. genioglossus

M. geniohyoideus

Chorda tympani

M. tensor tympani mit Nerv

N. petrosus minor

A. meningea media

N. auriculotemporalis

N. facialis

A. maxillaris

A. carotis ext.

Chorda tympani

N. alveolaris inf.

N. lingualis

N. mylohyoideus

M. styloglossus

Glandula submandibularis

Ganglion submandibulare

Ductus submandibularis

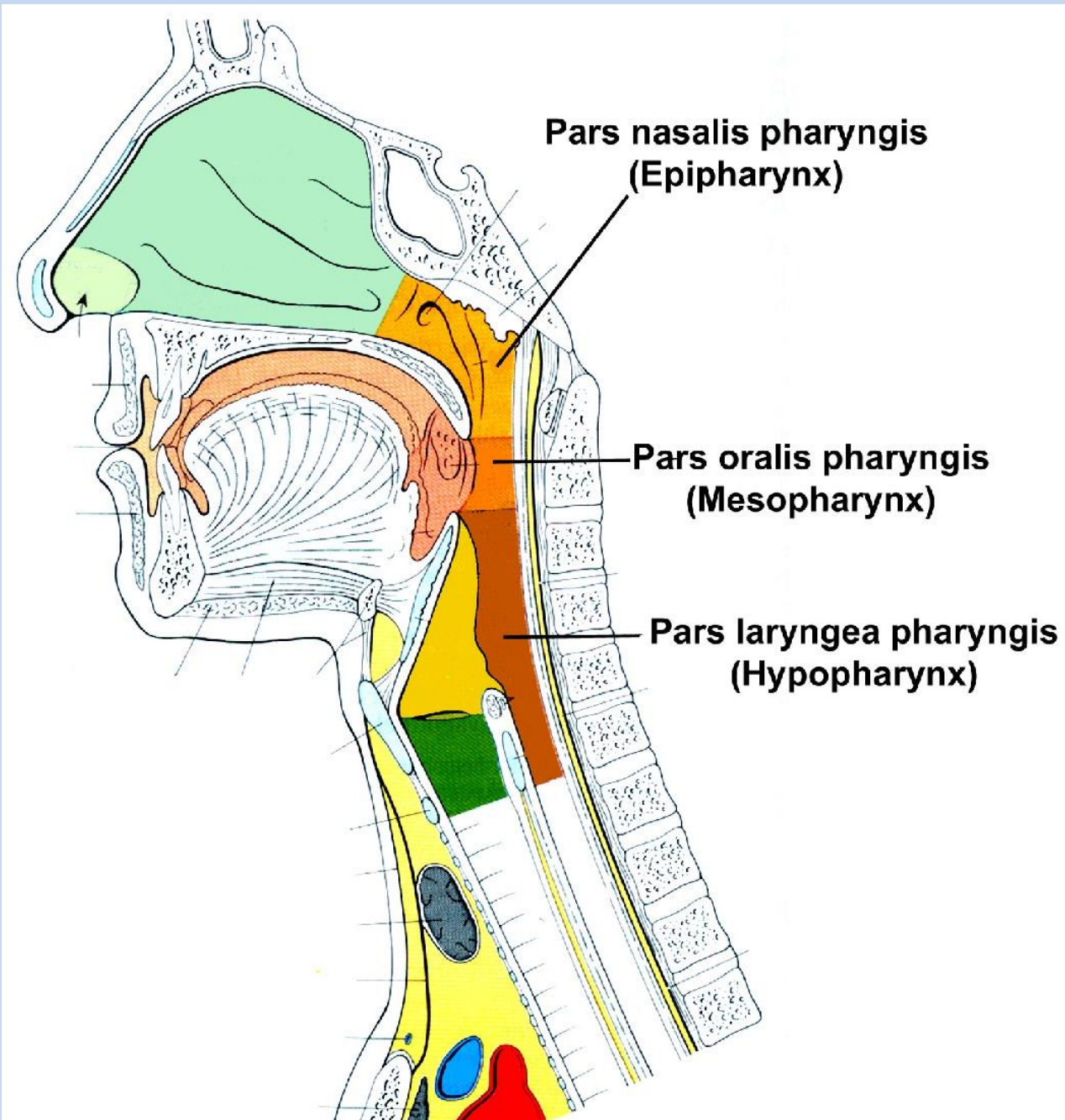
M. mylohyoideus

M. hyoglossus

Epiglottis

Os hyoideum

RW.



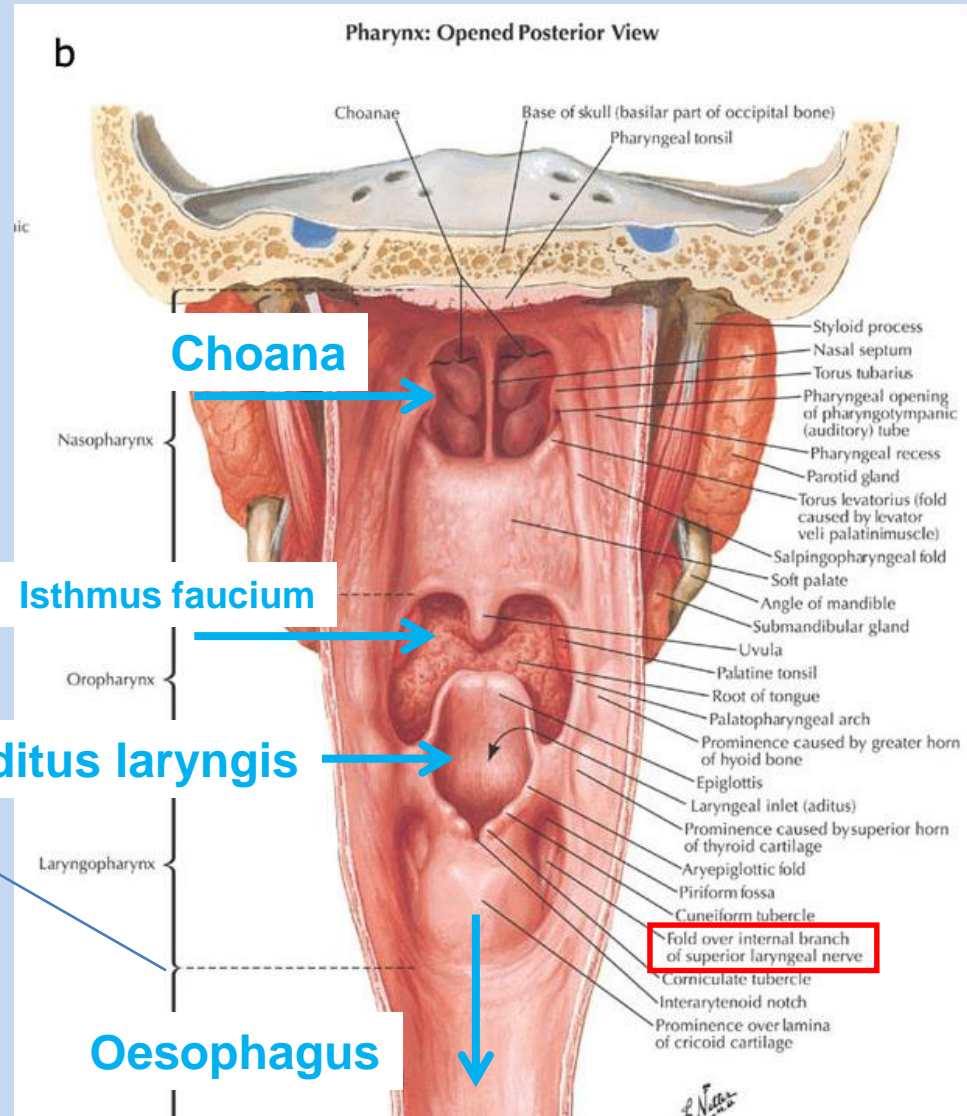
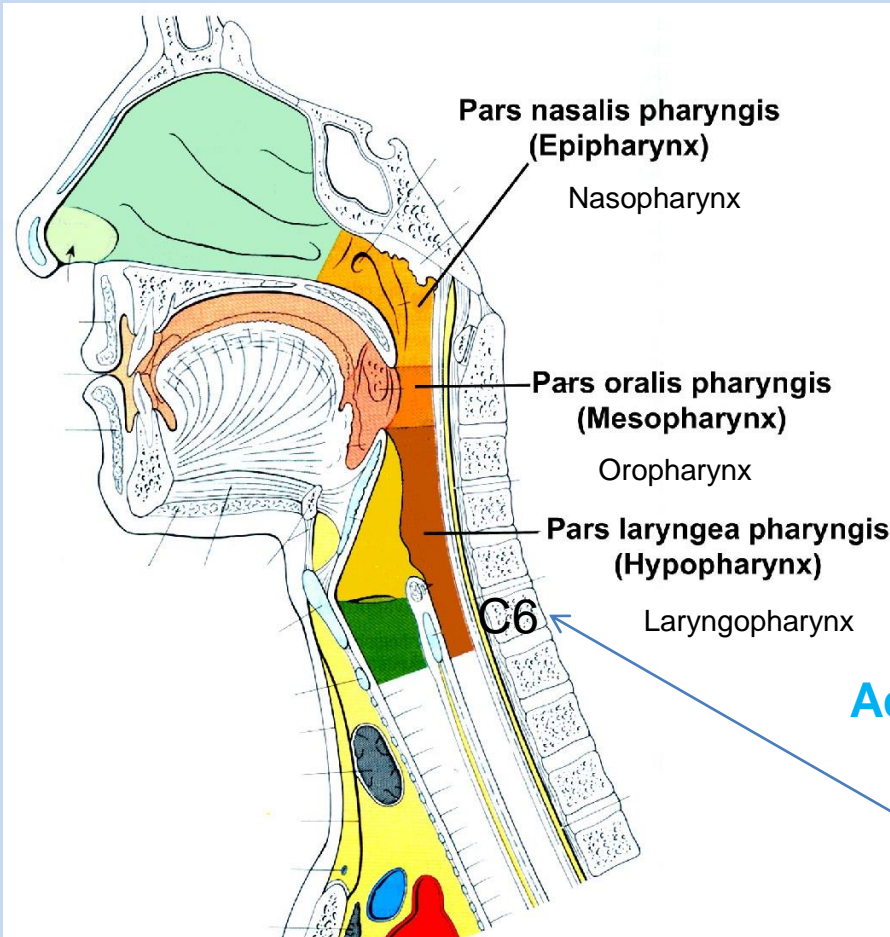
**Pars nasalis pharyngis
(Epipharynx)**

**Pars oralis pharyngis
(Mesopharynx)**

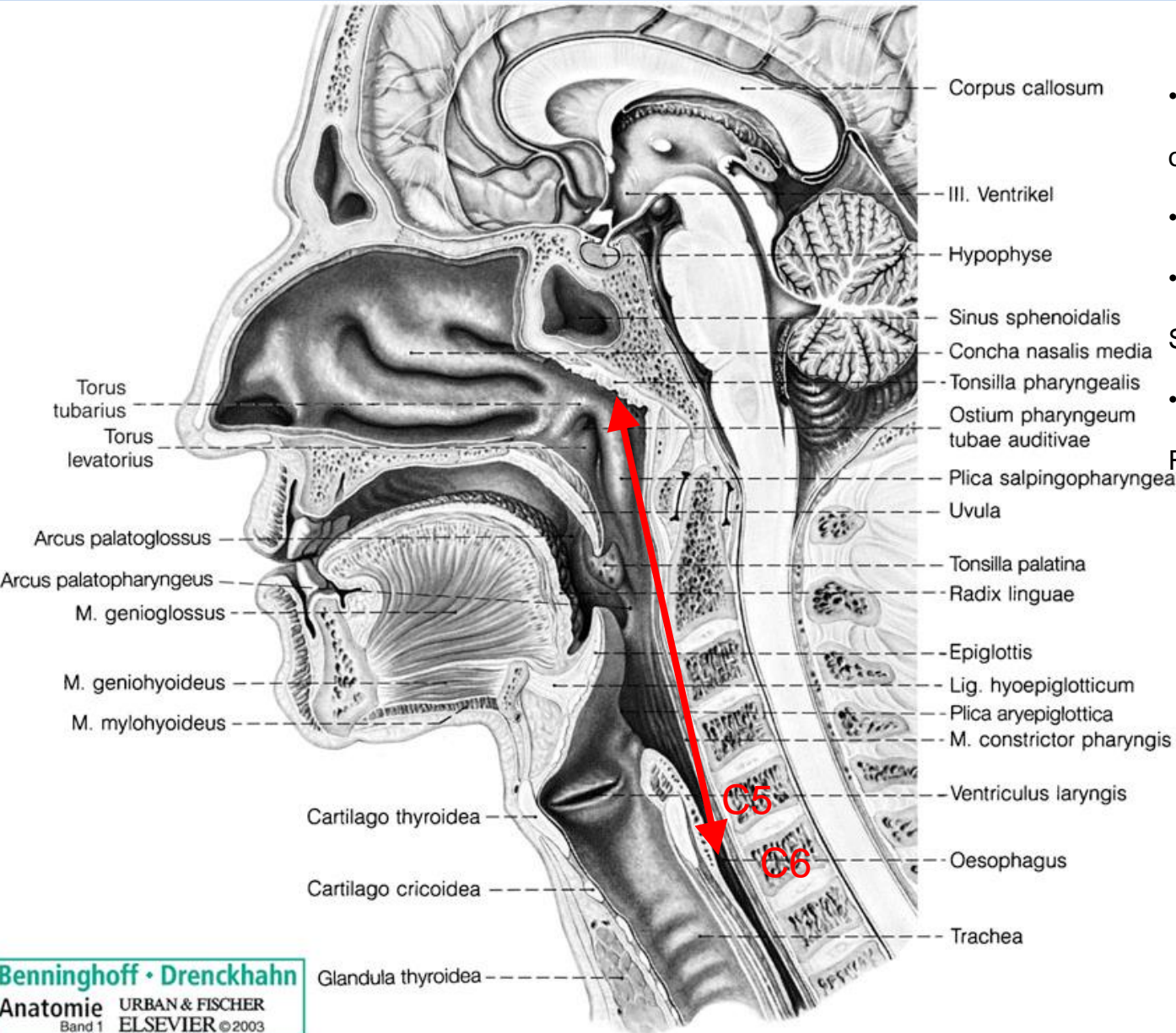
**Pars laryngea pharyngis
(Hypopharynx)**

Rachen (Pharynx)

3 Etagen:



Rachen (Pharynx)

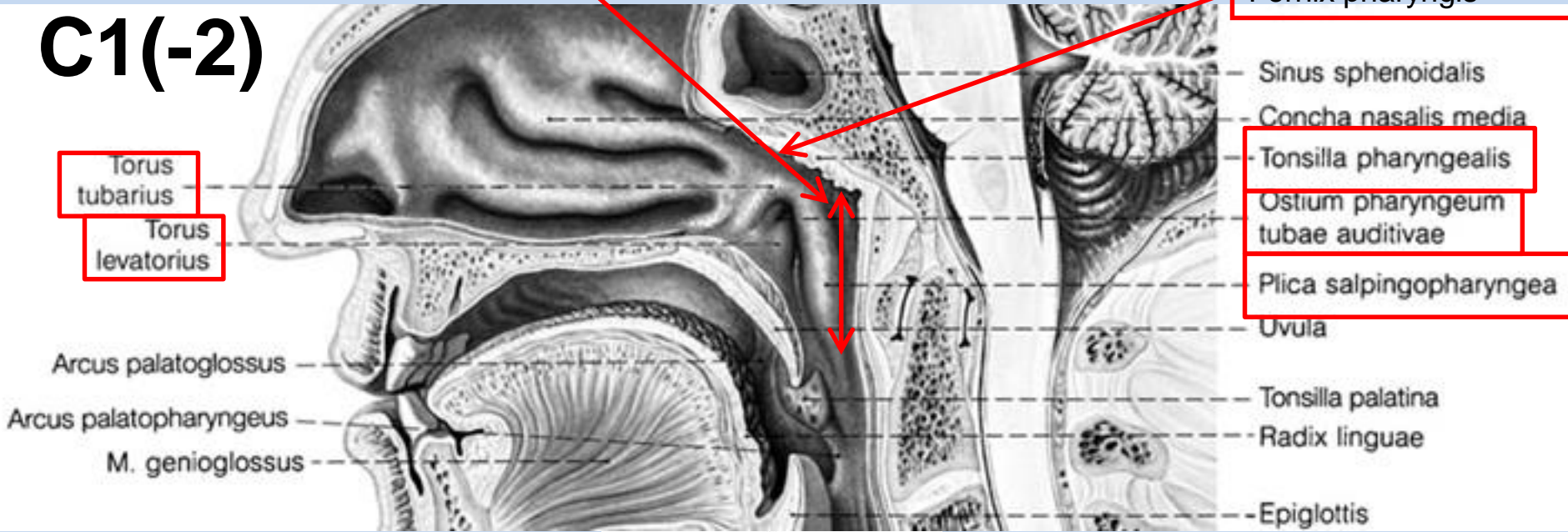


- Fibro-muskulöser Schlauch, vorne offen
- Schädelbasis- C5/6
- Kreuzung der Luft- und Speisewege
- Immunabwehr: lymphatischer Rachenring

Pars nasalis pharyngis (Epipharynx)

Recessus pharyngeus

C1(-2)



Vorderwand: Choanen

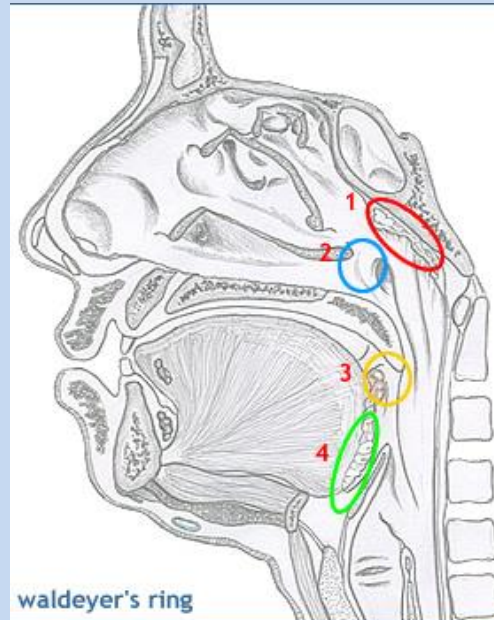
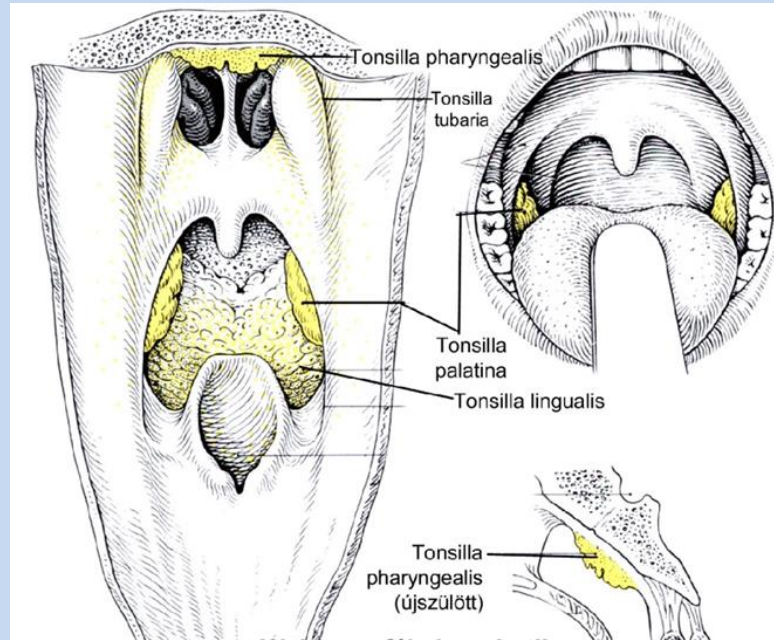
Hintere Rhinoskopie:



Waldeyersche Ring

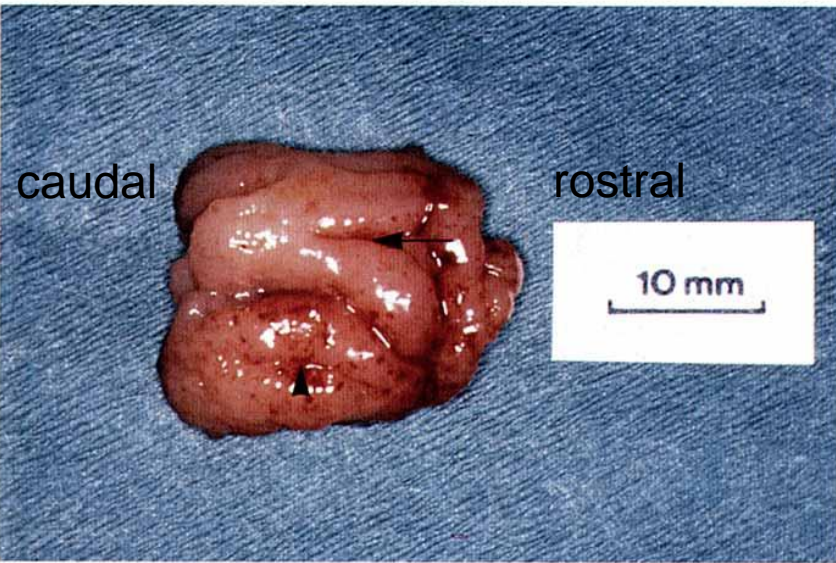
Mandeln

- pharyngeus
- tubaria
- palatinus
- lingualis



- Blutversorgung der Gaumenmandel
- A. palatina desc. (A. maxillary)
 - A. palatina asc. (A. facialis)
 - A. pharyngea asc. (A. carotis externa)
 - A. lingualis (A. Carotis externa)

Tonsilla pharyngea



Klinik:

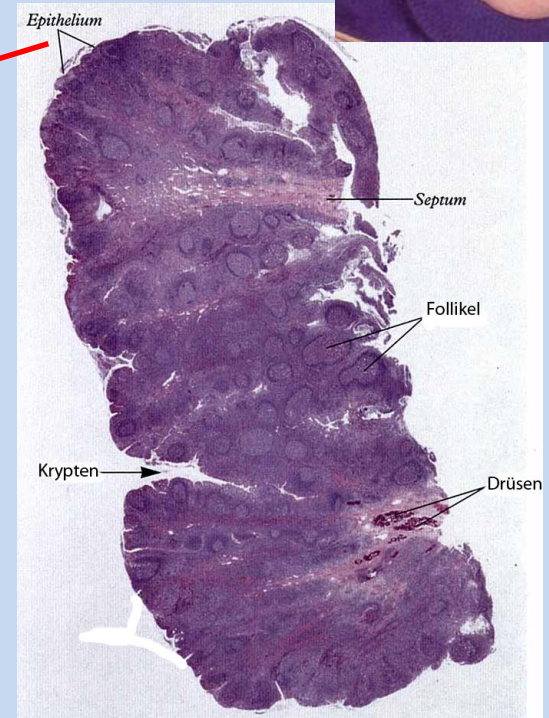
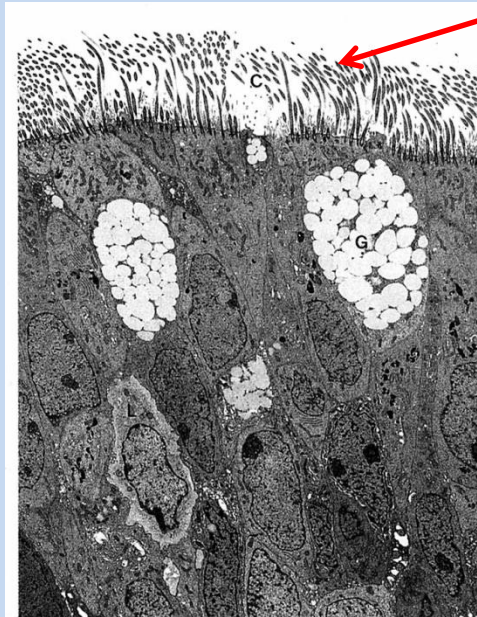
Vergrößerung der T. pharyngea:

Adenoid-Vegetation

Adenoid-Fazies

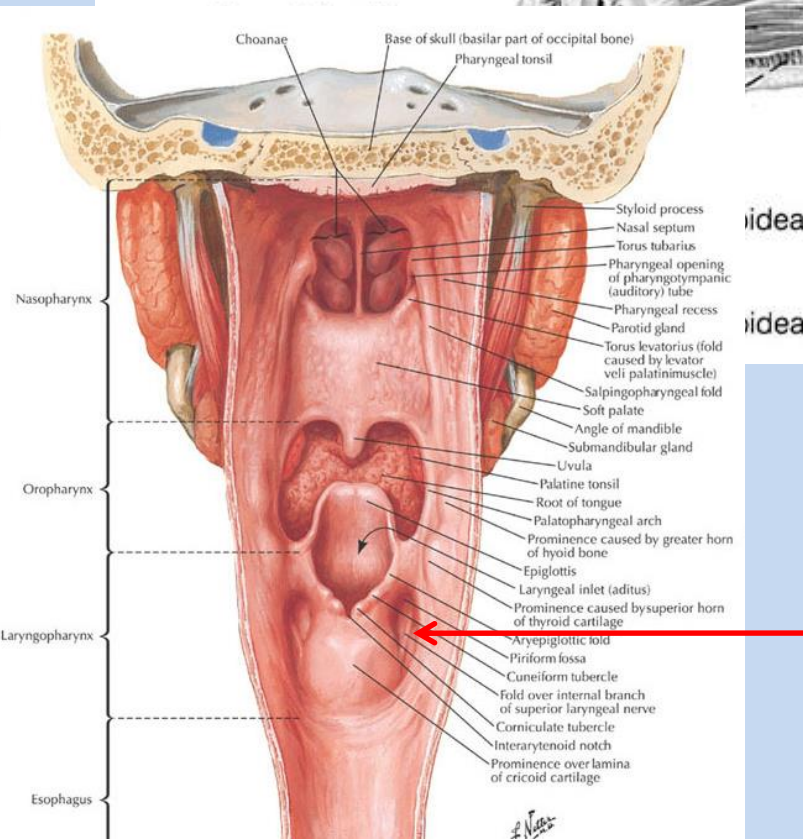
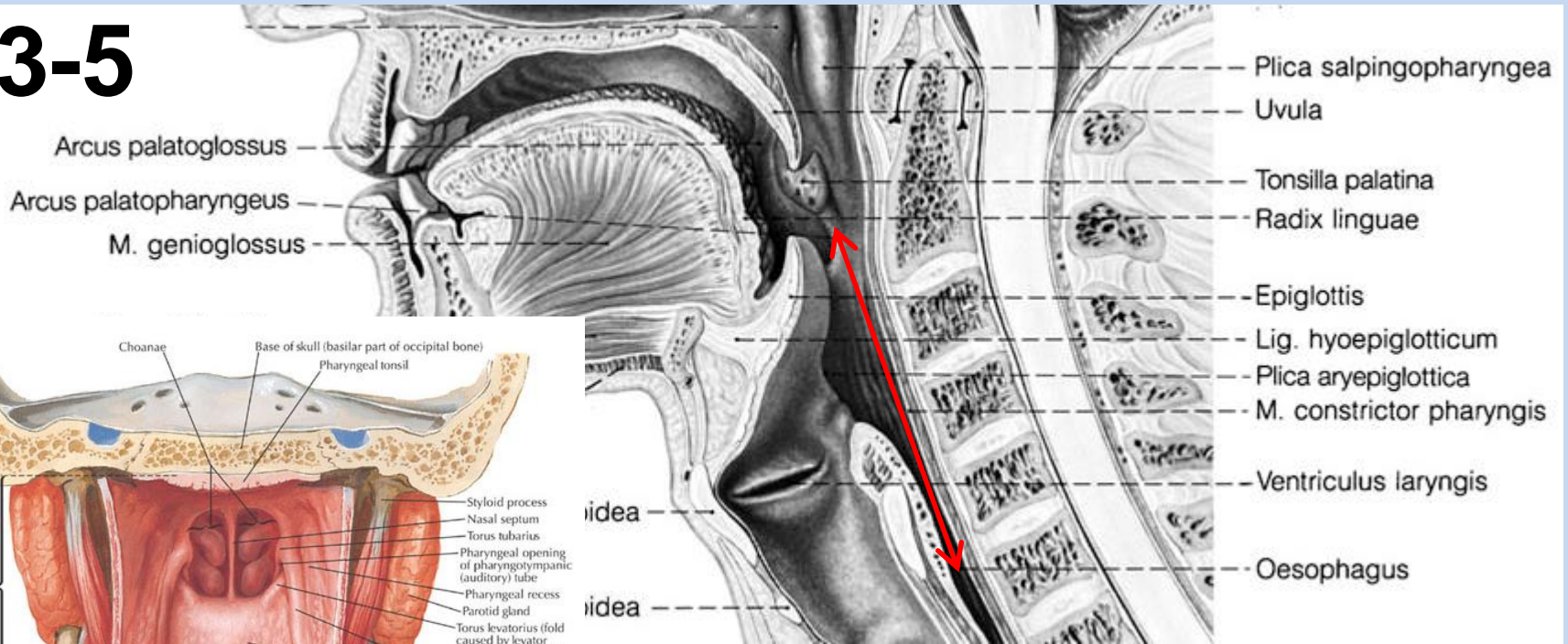


Mehrröhiges, hochprismatisches,
kinozilientragendes Epithel=
Respiratorisches Epithel



Pars laryngea pharyngis (Hypopharynx)

C3-5



Vorderwand: Aditus laryngis
 Seitlich: Recessus piriformis

Pharynxwand

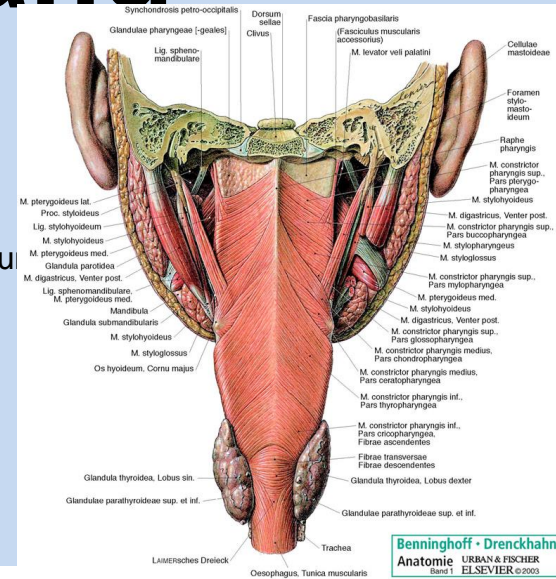
Tunica mucosa:

- Epithelium mucosae: Nasopharynx: mehrreihiges Flimmerepithel,
Oro-, Laryngopharynx: mehrsch. Unverh. Plattenepithel
- Lamina propria mucosae: BGW, elastische Fasern (Dehnungen, Verschiebung)
- Lamina muscularis mucosae: fehlt

Tunica muscularis: Schlundschnürer (Mm. constrictores pharyngis)

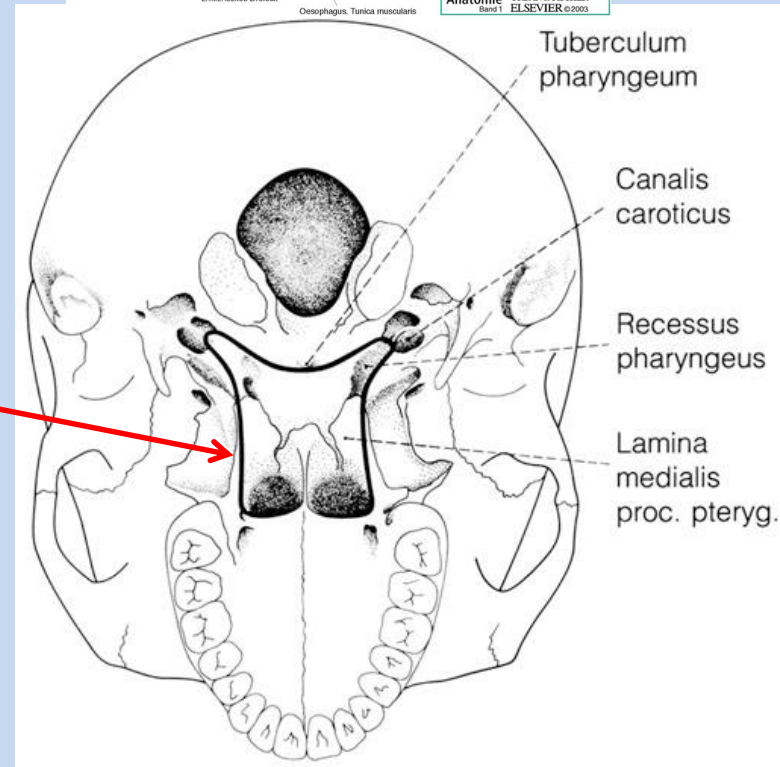
Schlundheber (Mm. levatores pharyngis)

Tunica adventitia: BGW → → Spatium peripharyngeum (Verschiebespalt)

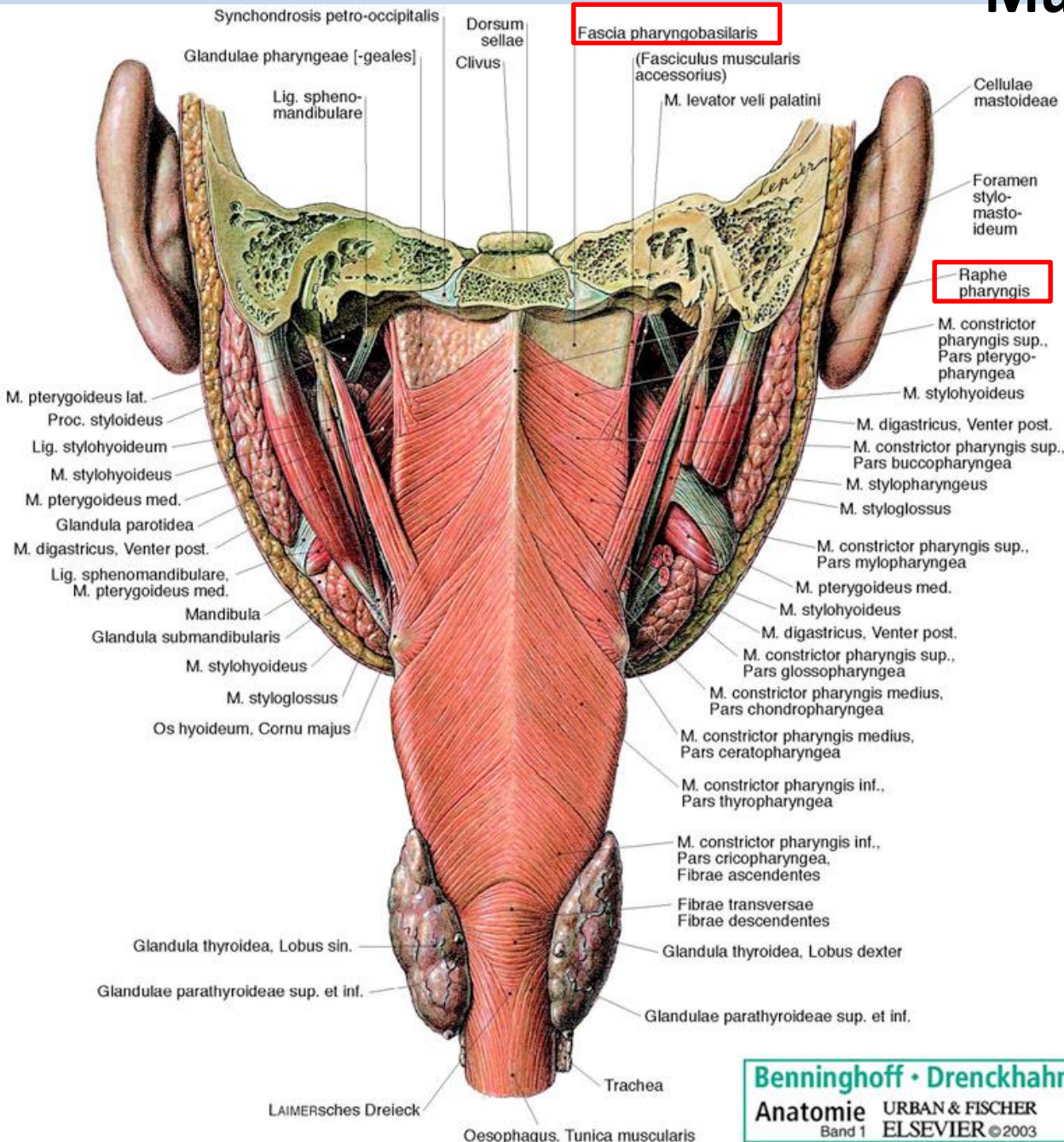


Oben: muskelfrei: Membrana pharyngobasilaris

Anheftungslinie



Musculi pharyngis



Schlundschnürer:

M. constrictor pharyngis sup.

- P. pterygo-pharyngea
- P. buccopharyngea
- P. mylopharyngea
- P. glossopharyngea

M. constrictor pharyngis med.

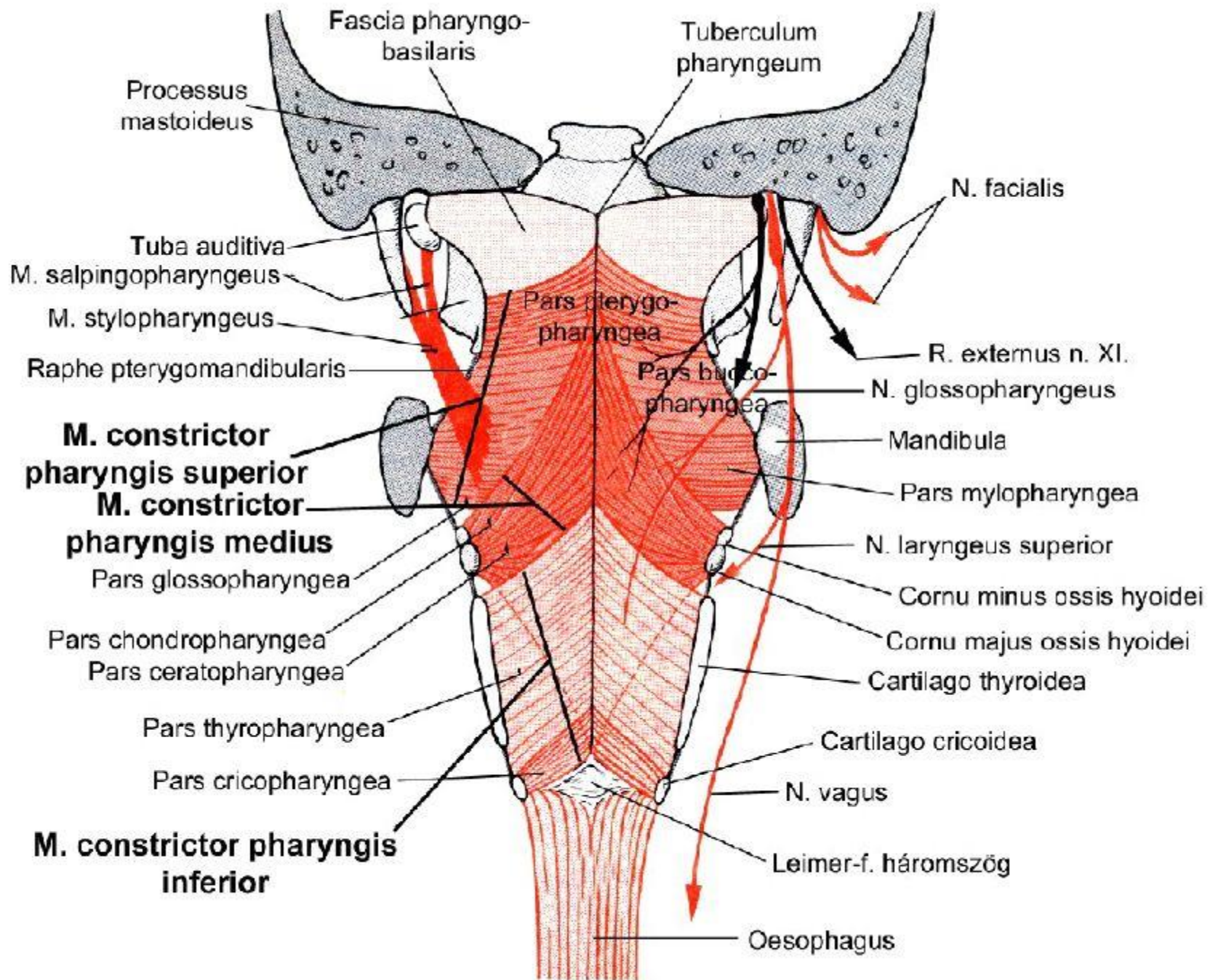
- P. chondropharyngea
- P. ceratopharyngea

M. constrictor pharyngis inf.

- P. thyropharyngea
- P. cricopharyngea

Schlundheber:

- M. stylopharyngeus
- M. salpingopharyngeus
- M. palatopharyngeus



Leitungsbahnen

Arterien:

A. carotis ext. → A. pharyngea ascendens → Rr. pharyngeales

A. carotis ext. → A. facialis → A. palatina asc. (Tonsilla pal., Tubenostium)

A. subclavia → Tr. thyrocervicalis → A. thyroidea inf. → Rr. pharyngeales (Hypopharynx)

Venen:

Plexus pharyngeus → V. jugularis int.

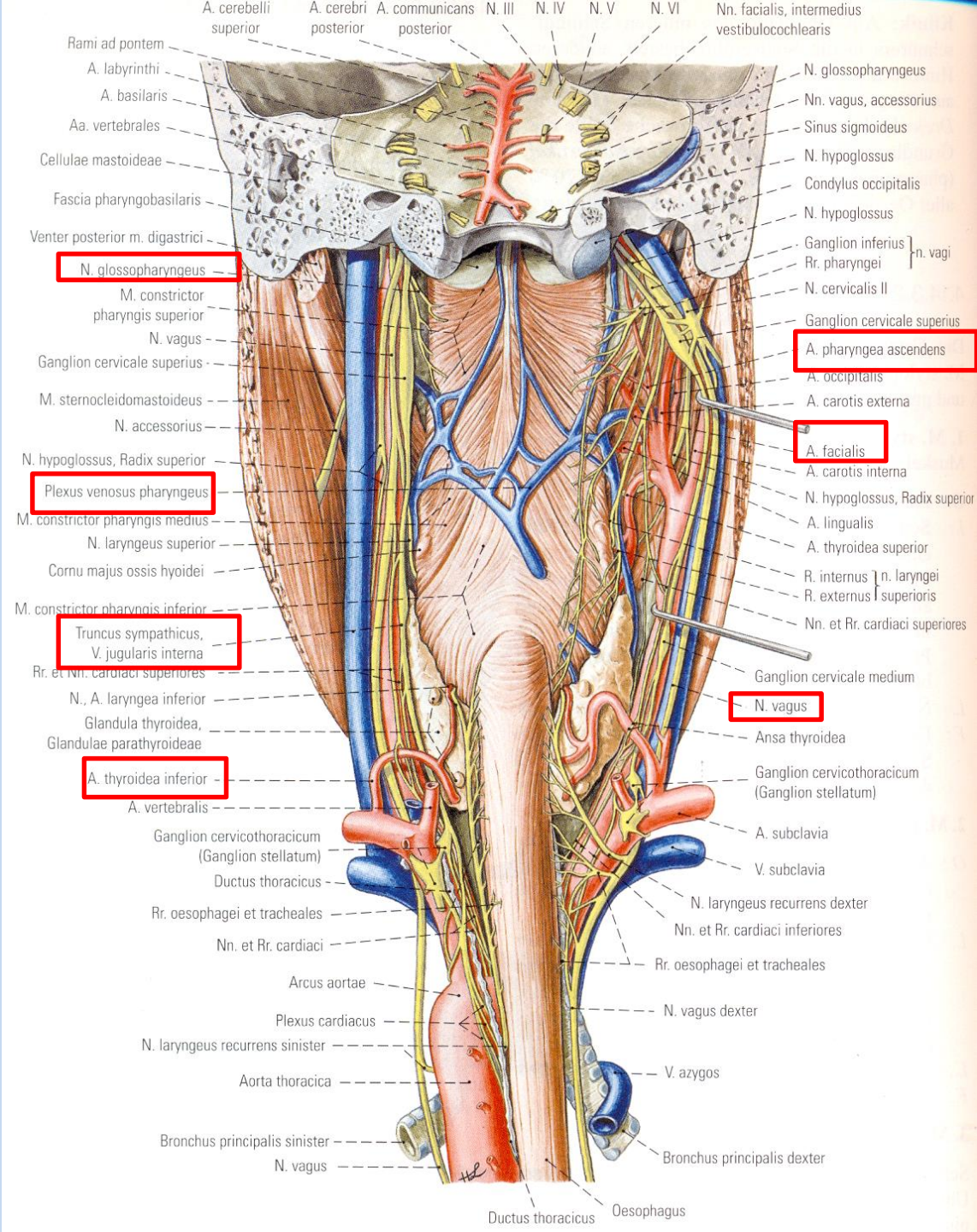
Plexus pterygoideus → V. jug. int.

Lymphgefäße:

III. retropharyngeales, III. cervicales proff.

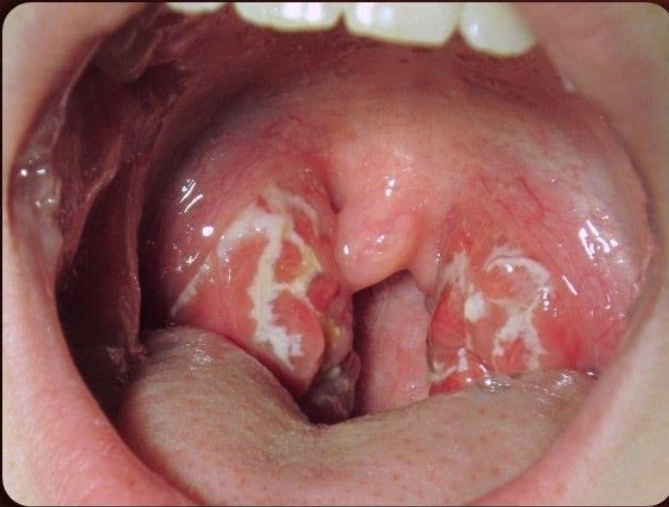
Nerven:

Plexus pharyngeus aus N. IX., N. X., Truncus sympathicus



Pharyngitis

Streptococcal
Pharyngitis



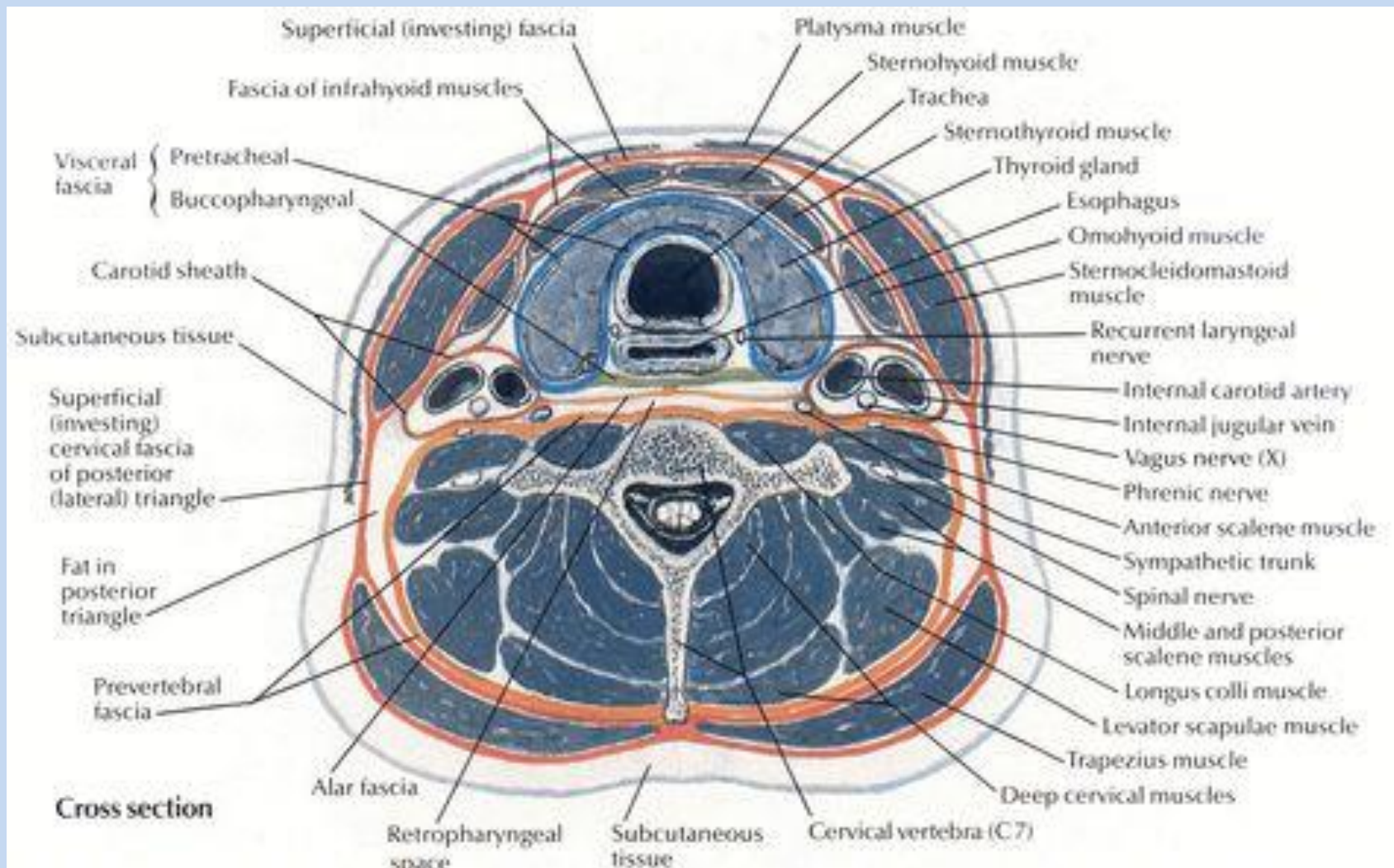
Original image by [James Heilman, MD / CC BY-SA 3.0](#)

Viral
Pharyngitis

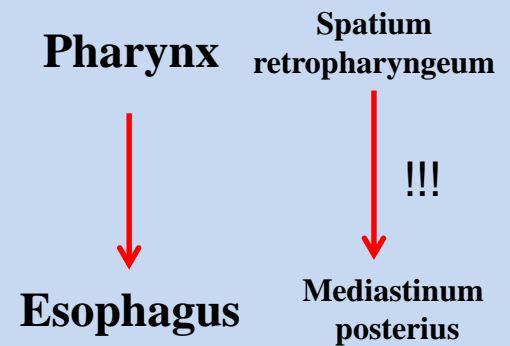
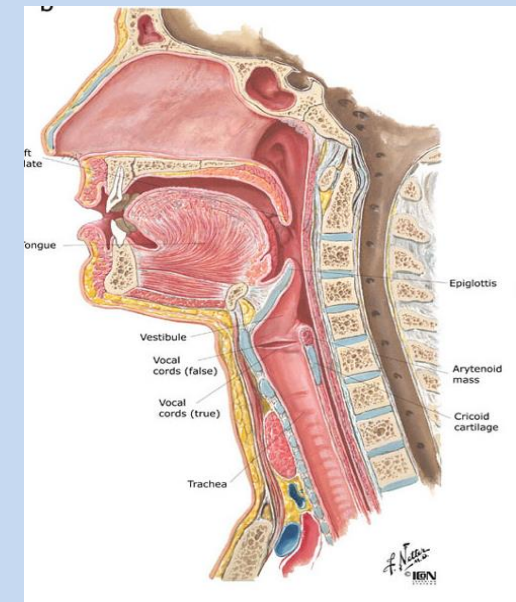
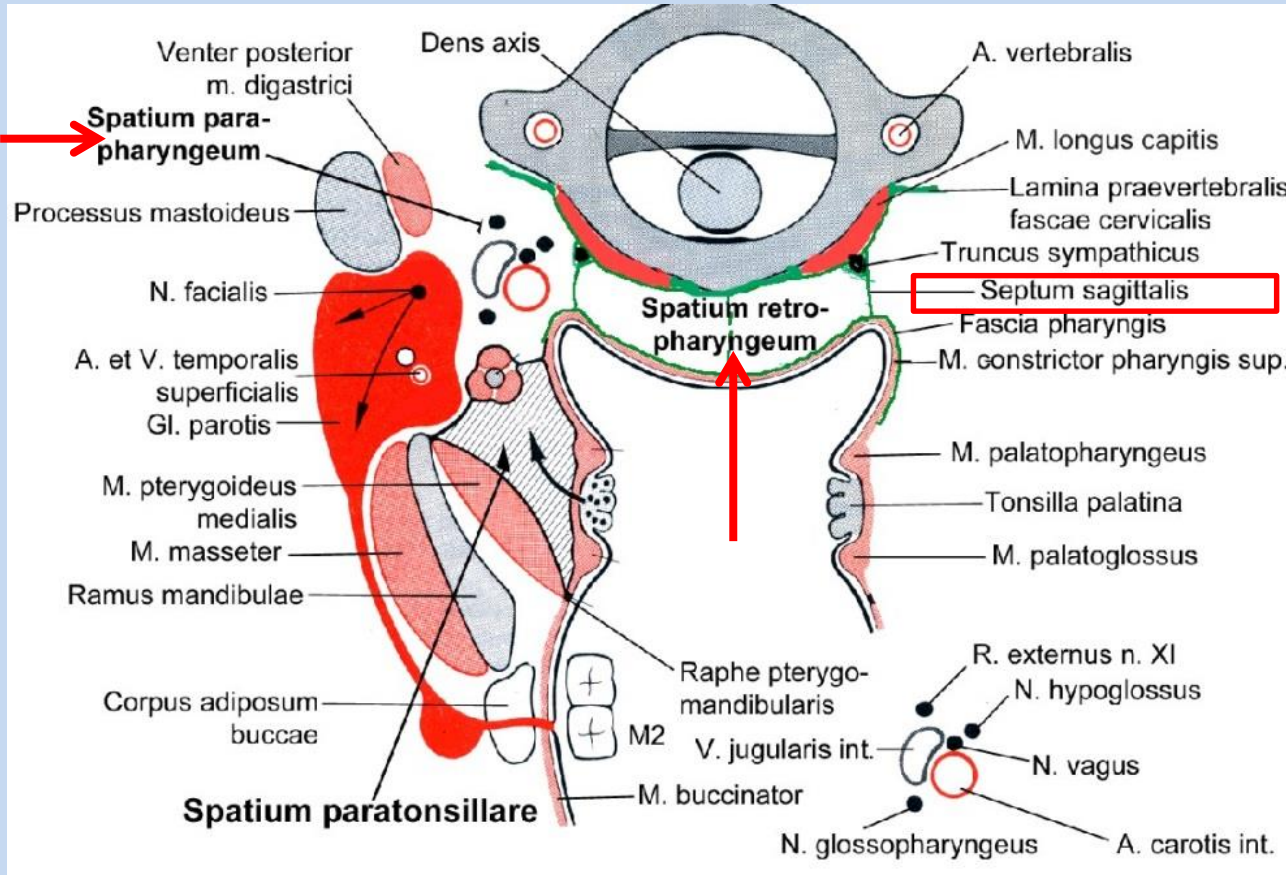
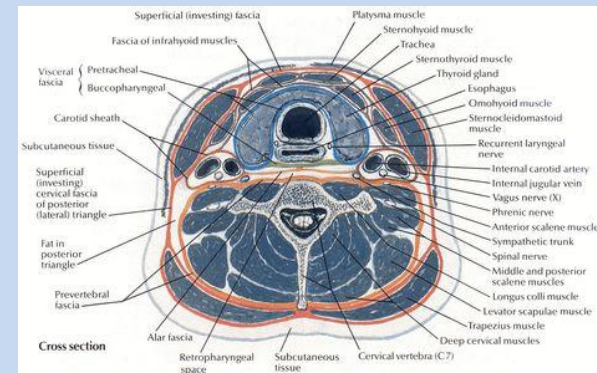


Original image [Dake-commonswiki / CC BY-SA 2.5](#)

Fascien des Halses



→ Peripharyngeale Räume



Kopf



1. M. orbicularis oris
2. M. buccinator
3. Corpus adiposum buccae
4. M. masseter
5. Ramus mandibulae
6. M. pterygoideus med.
7. M. palatoglossus
8. Tonsilla palatina
9. M. palatopharyngeus
10. Isthmus faucium
11. M. constrictor pharyngis
12. Sp. retropharyngeum
13. M. longus capitis
14. Atlas
15. Dens axis
16. Glandula parotidea
17. A. carotis interna
18. A. vertebralis
19. A. carotis externa
20. M. digastricus vent. post.
21. M. semispinalis capitis
22. M. splenius capitis
23. M. trapezius
24. M. sternocleidomast.

Signature
2005