



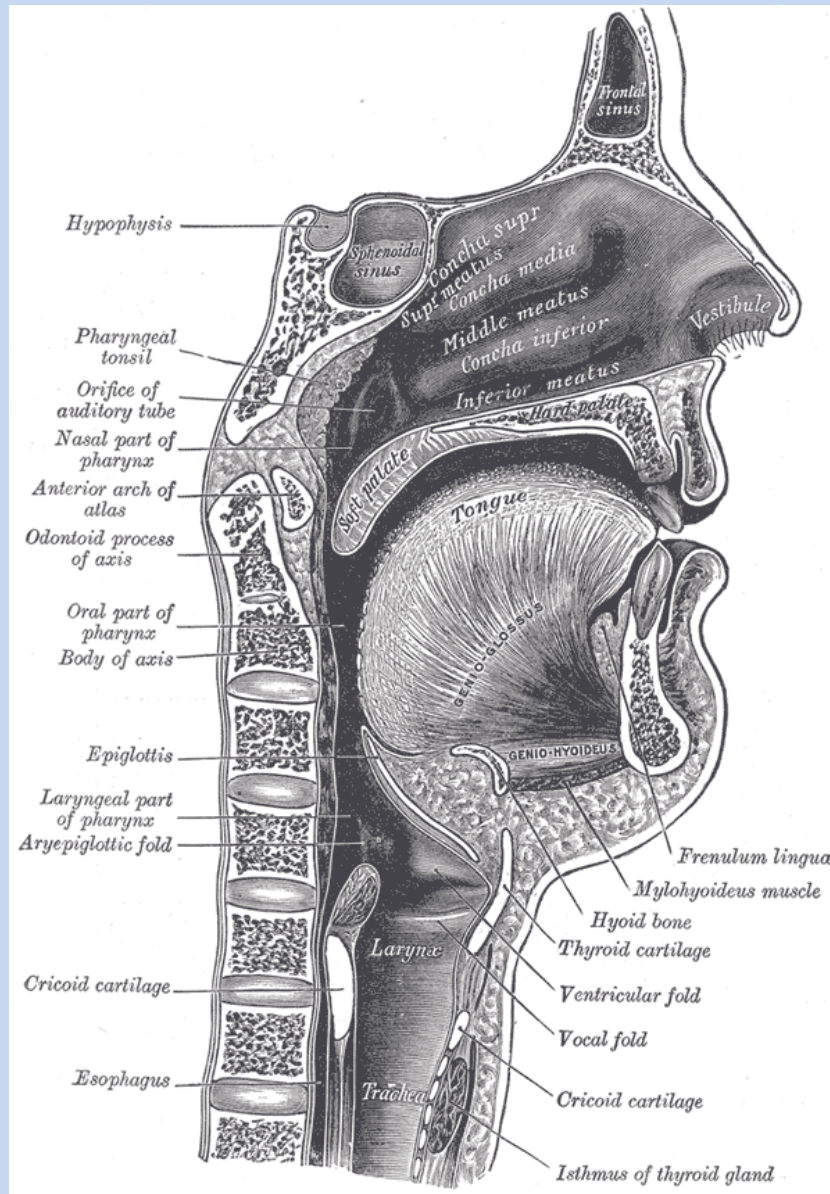
## A szájüreg falai, részei, a szájüregi nyálkahártya szerkezete

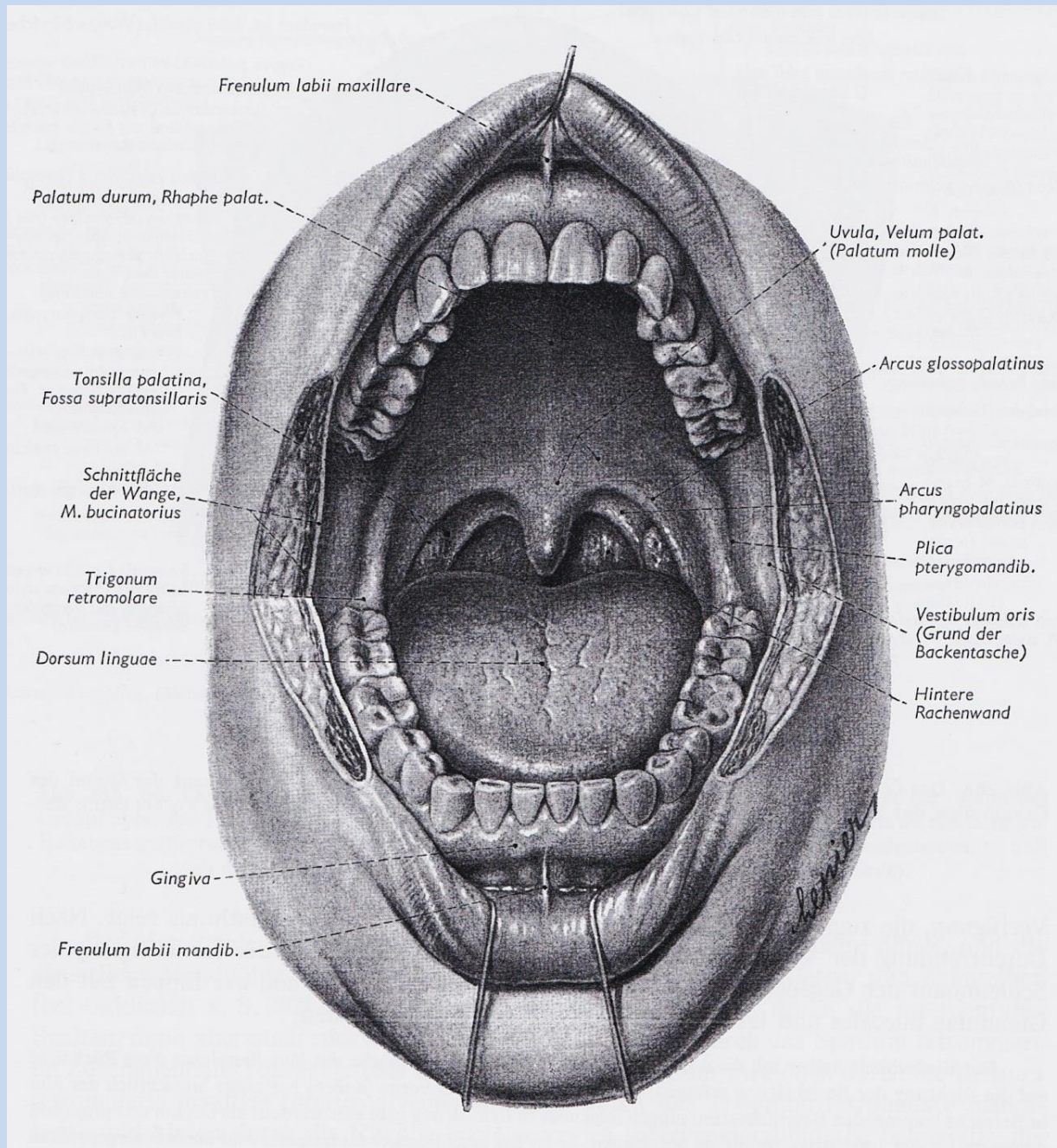
*Aki vigyáz szájára és nyelvére, megőrzi életét a nyomorúságtól.*

*Példabeszédek könyve 21:23*

Ph.D., Dr. Lendvai Dávid

# TOPOGRAPHIA







# A szájüreg részei

## 1.Vestibulum

### Határok:

- Ajkak és a pofa (Bucca)
- Fogívek

## 2.Cavum proprium

### Határok:

- felül: kemény- és lágyszájpad
- alul: diaphragma oris (M. mylohoid )
- antero-lateral: fogívek
- hátul: torokszoros (isthmus faucium)





Philtrum

Ajkak

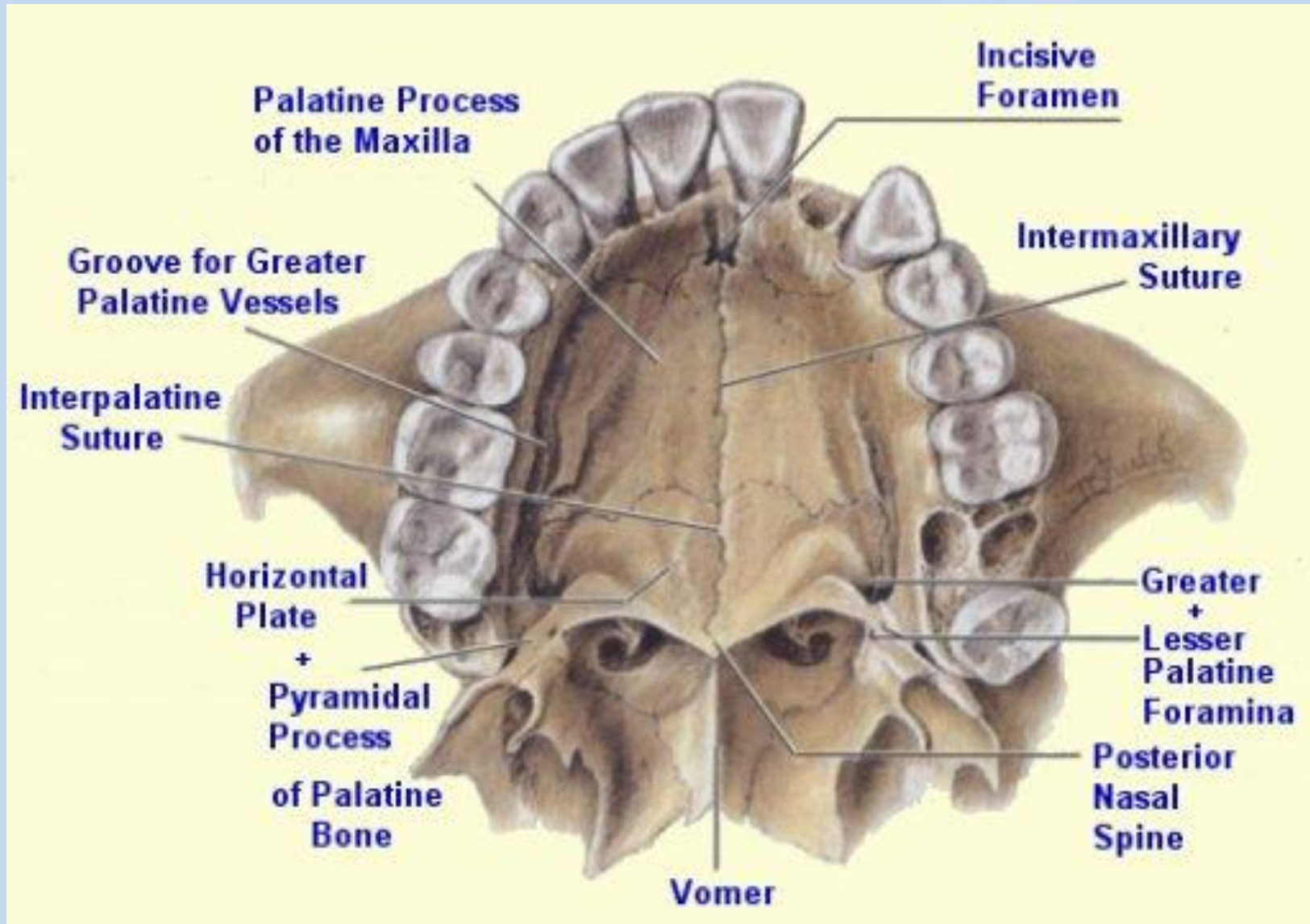
Angulus oris

Rubor labii

sulcus nasolabialis

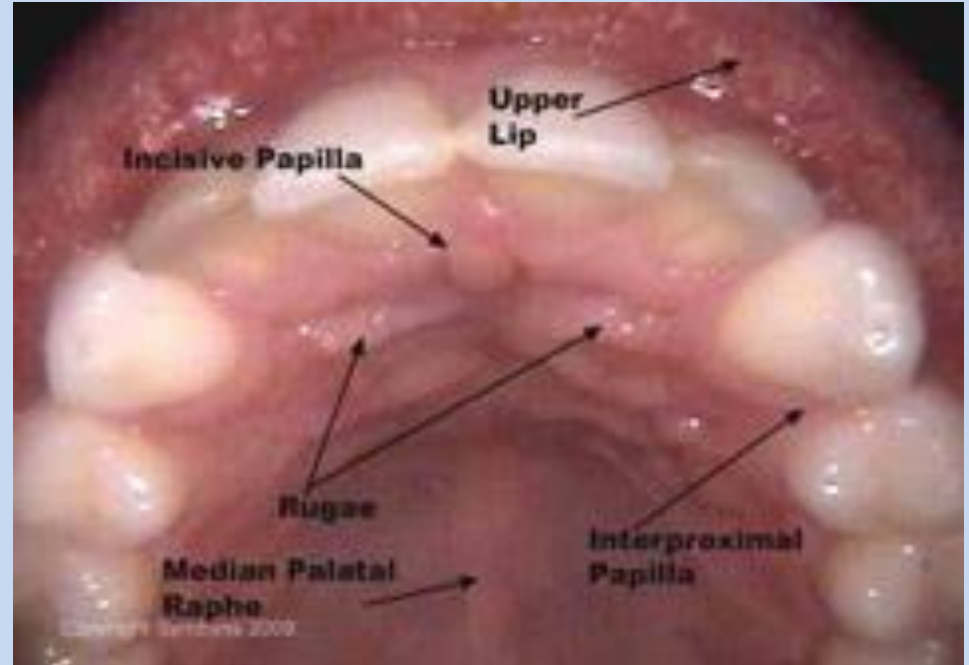
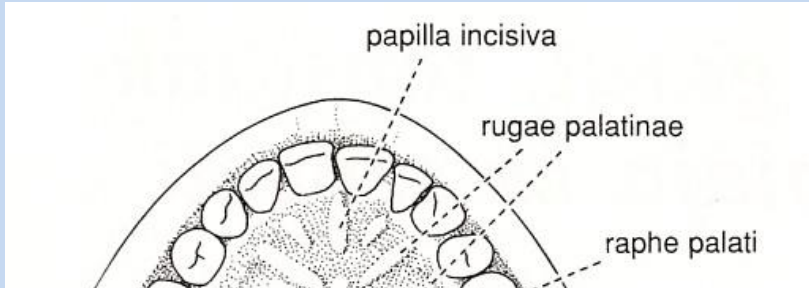
(N. facialis bénulás)

# Szájpad: kemény- és lágyszájpad



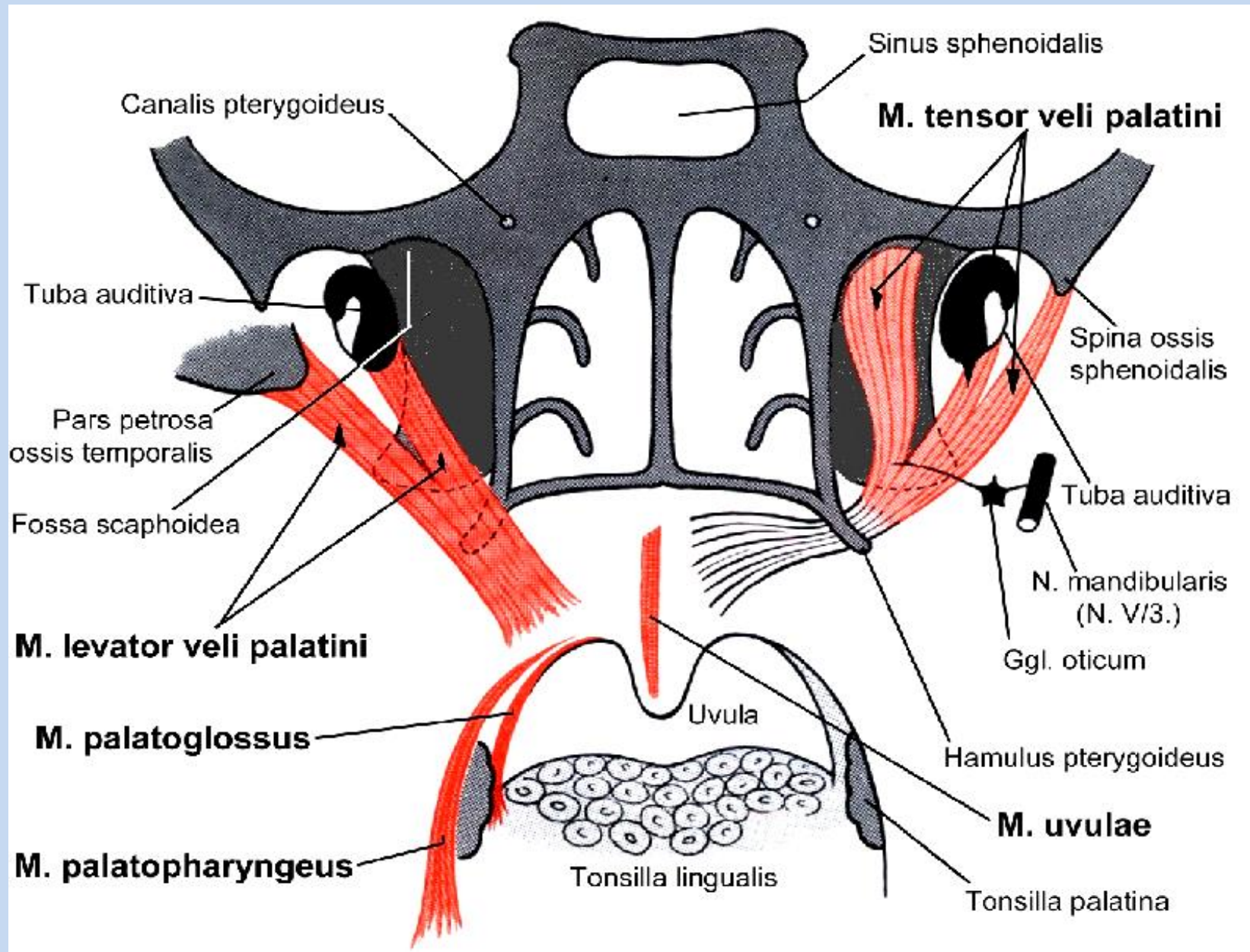


# Kemény szájpad (Palatum durum)



- Papilla incisiva
- Rugae palatinae
- Raphe palatinae
- Torus palatinus

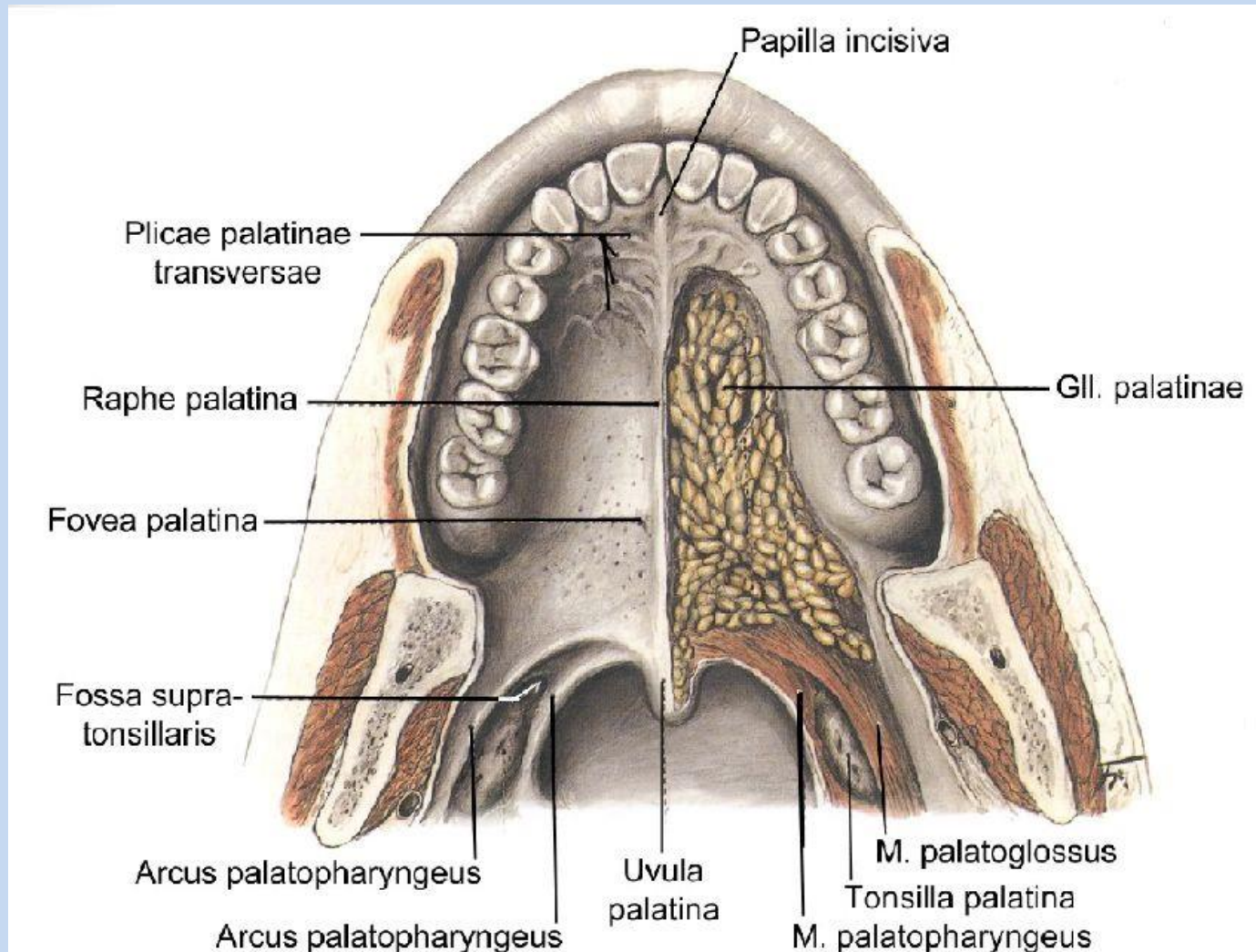
# Lágy szájpad (Palatum molle)





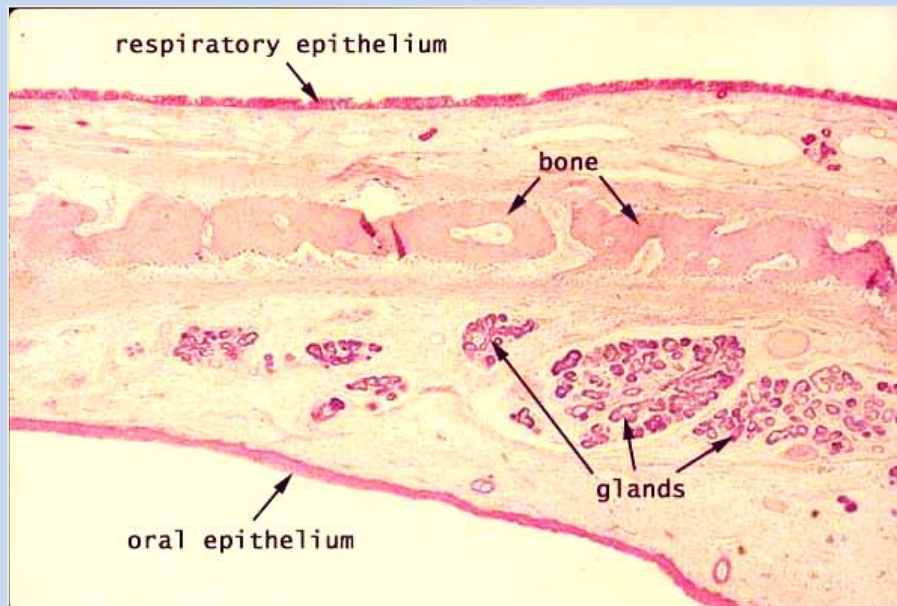
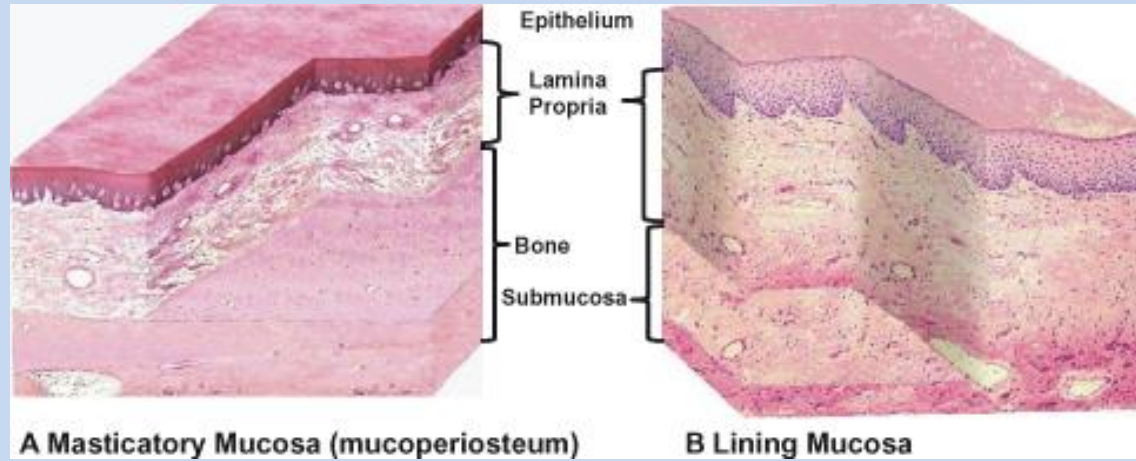
# kemény- és lágy szájpad

- Mucosa
- Mirigyek
- Csont/Izom

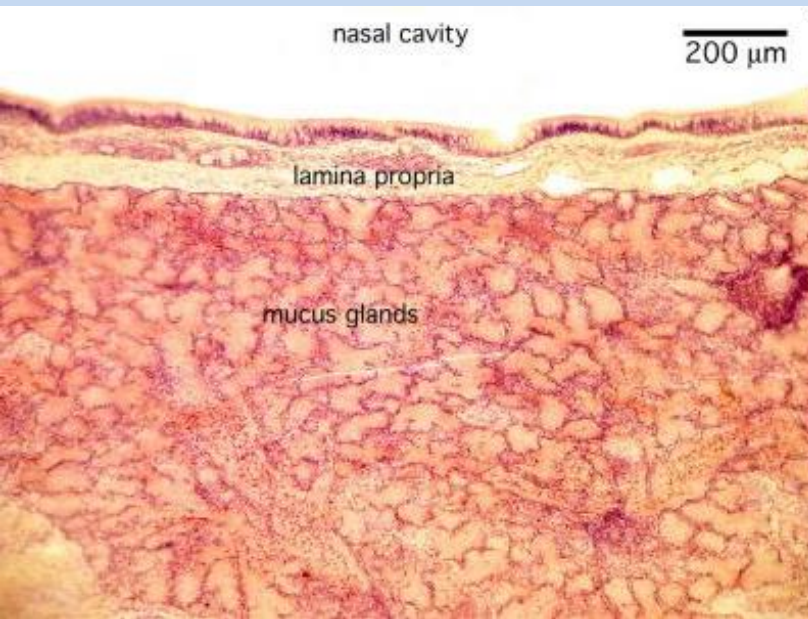


# A kemény szájpad szövettana

## Mucoperiosteum



# A lágyszájpad szövettana

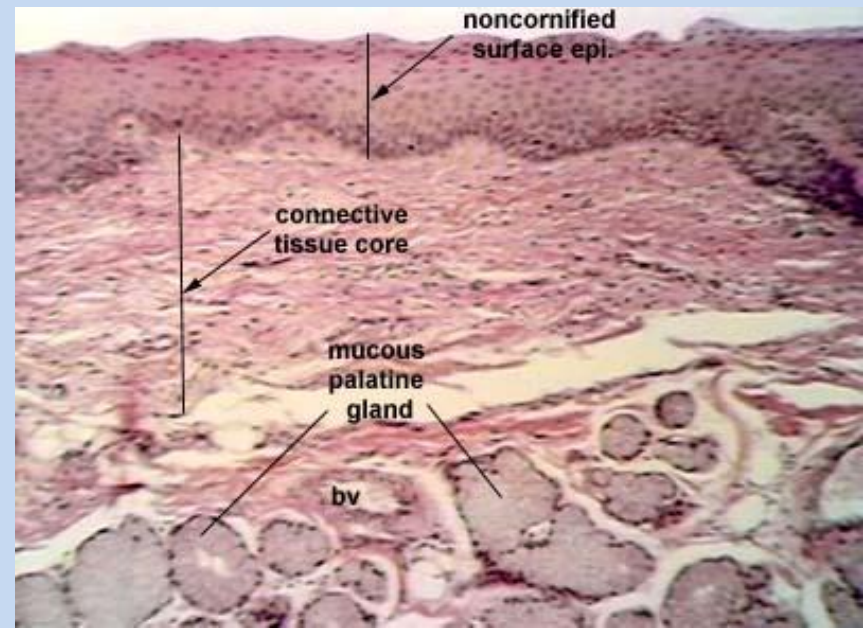


## Nasalis felszín

- Többmagsoros csillósörös hengerrhám
- Lamina propria
- Submucosa
- Nyálmirigyek
- HCS izom

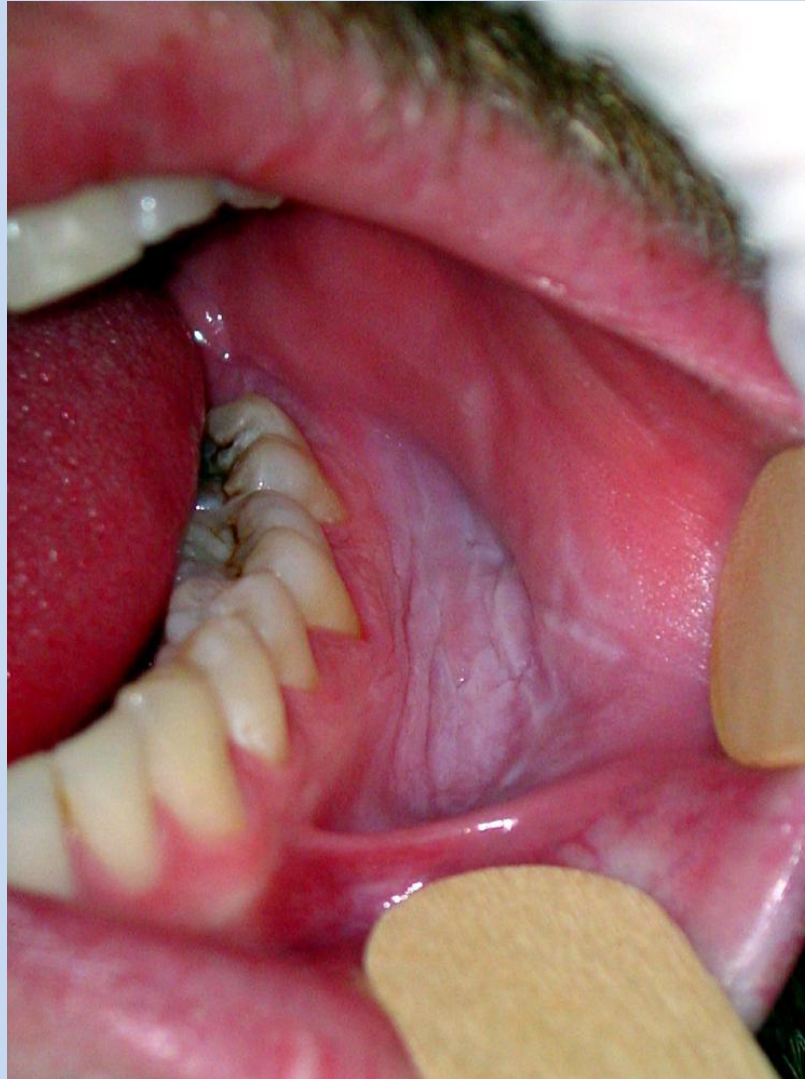
## Oralis felszín

- Többrétegű ENSZ laphám





# Leukoplakia (precancerous állapot!!!)



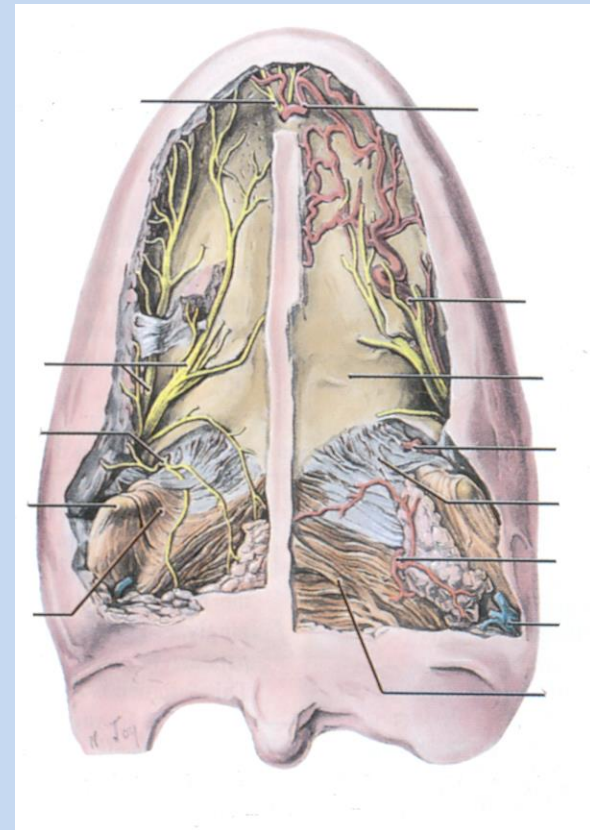
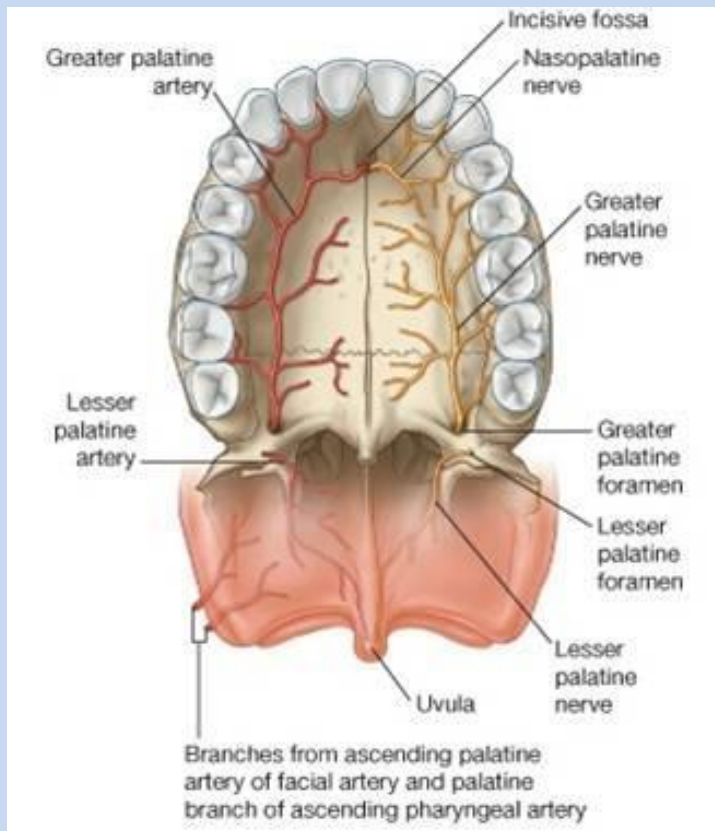
# Allergia



# A kemény- és lágy szájpad vérellátása és beidegzése

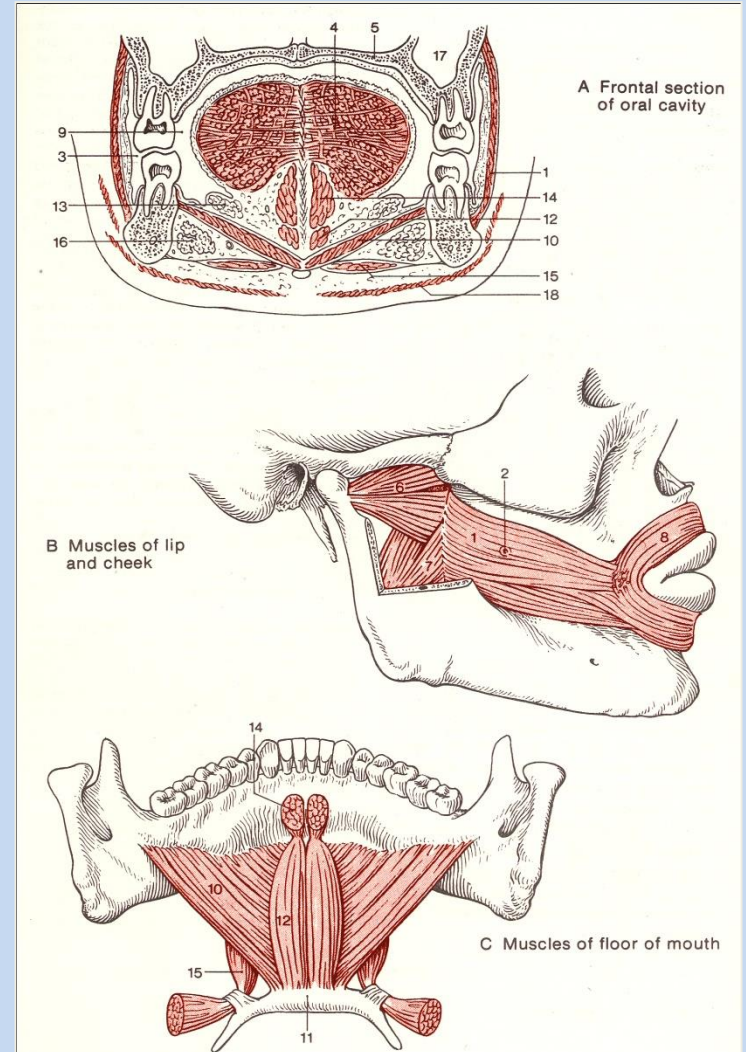
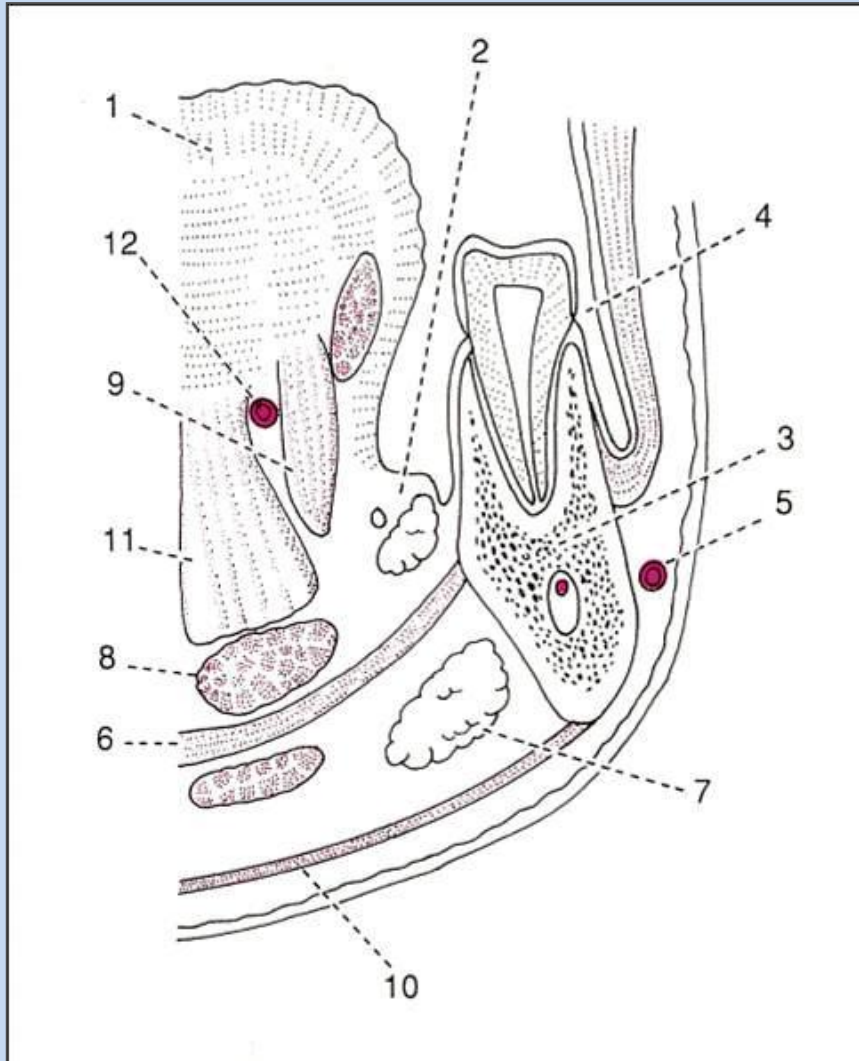
- N. palatinus major és minor  
(N. maxillaris)
- N. nasopalatinus

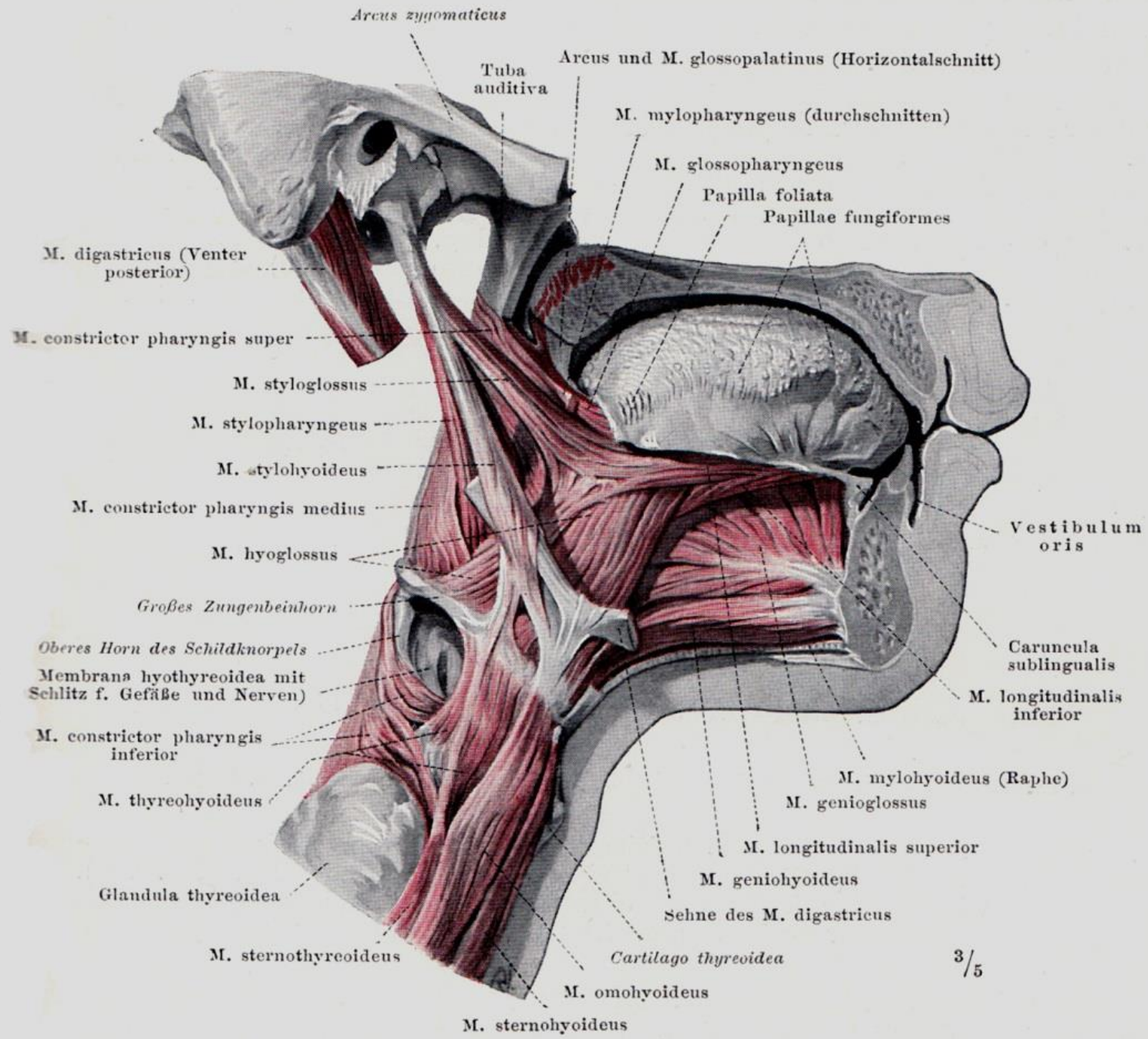
## A. palatina major és minor



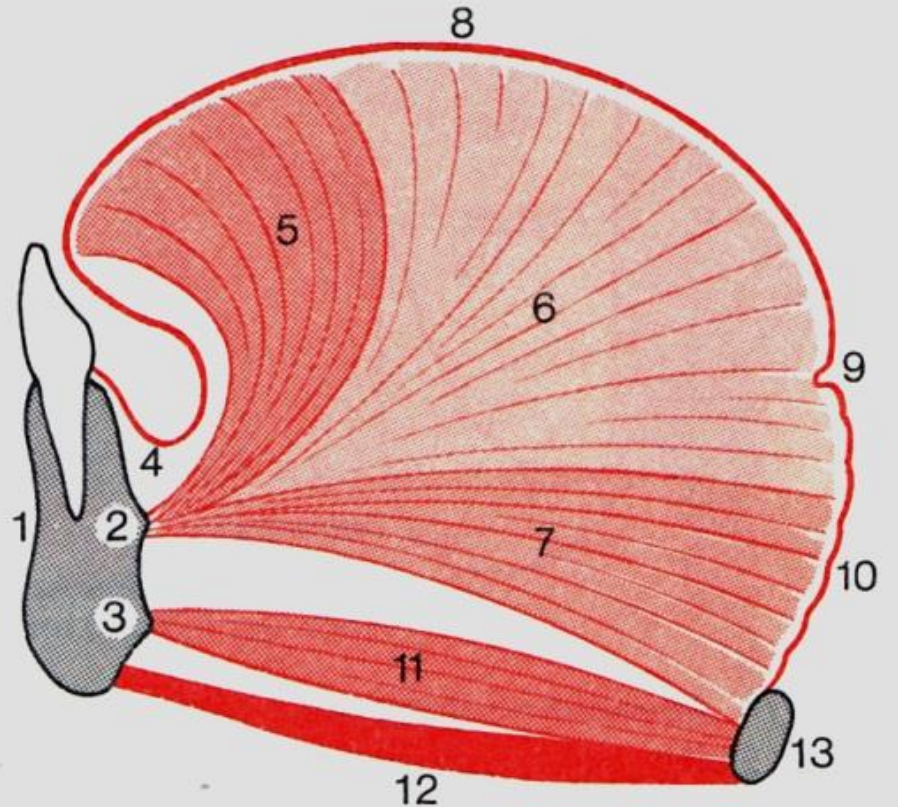
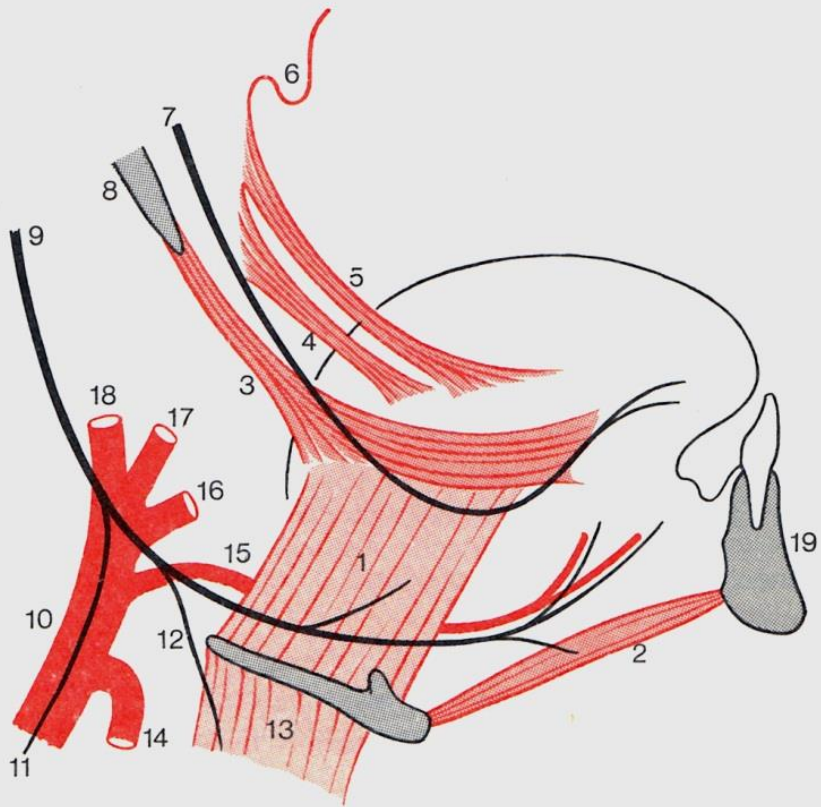


# Szájfenék: diaphragma oris (M. Mylohyoideus)



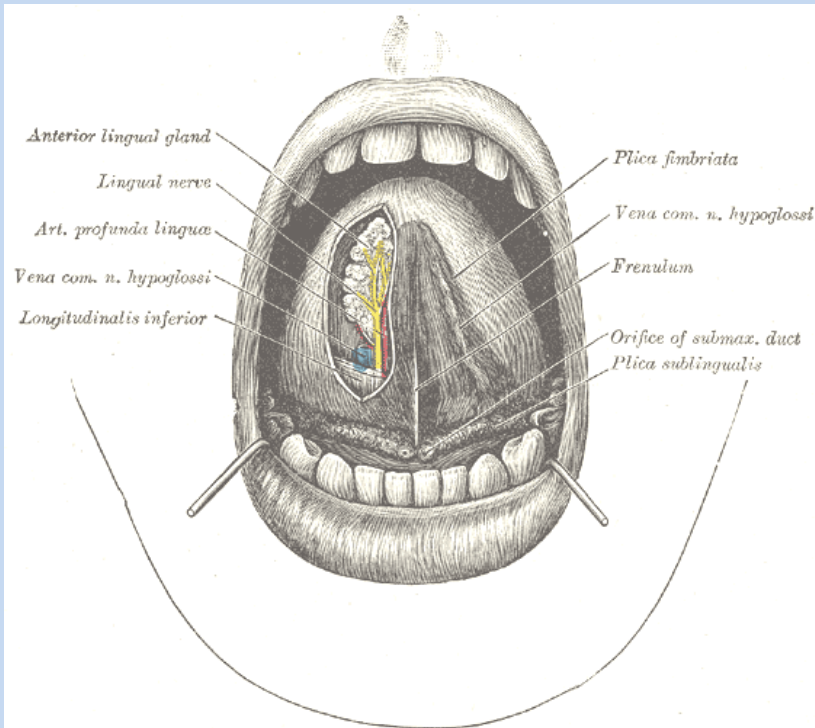




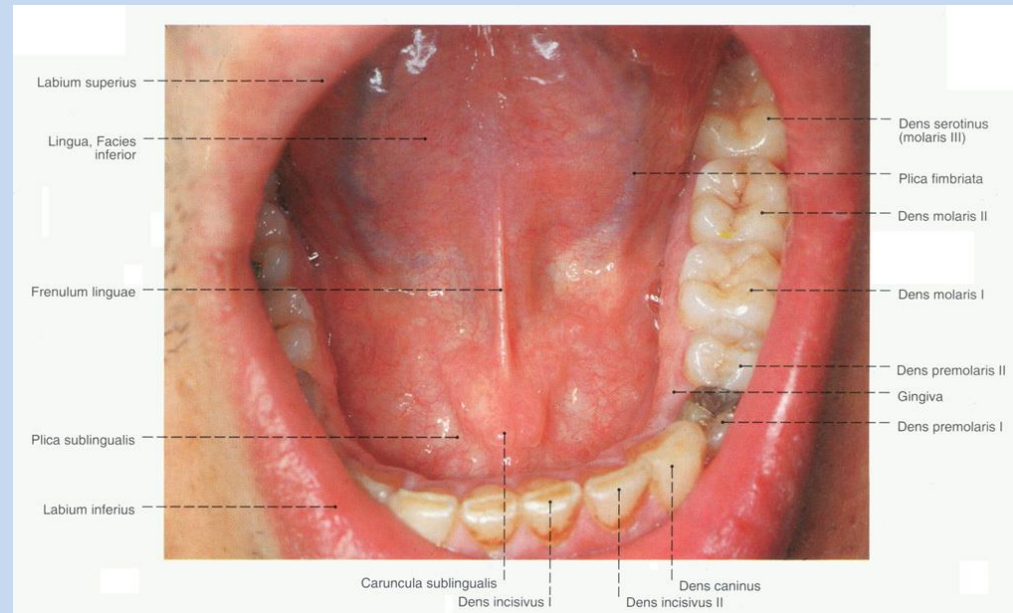




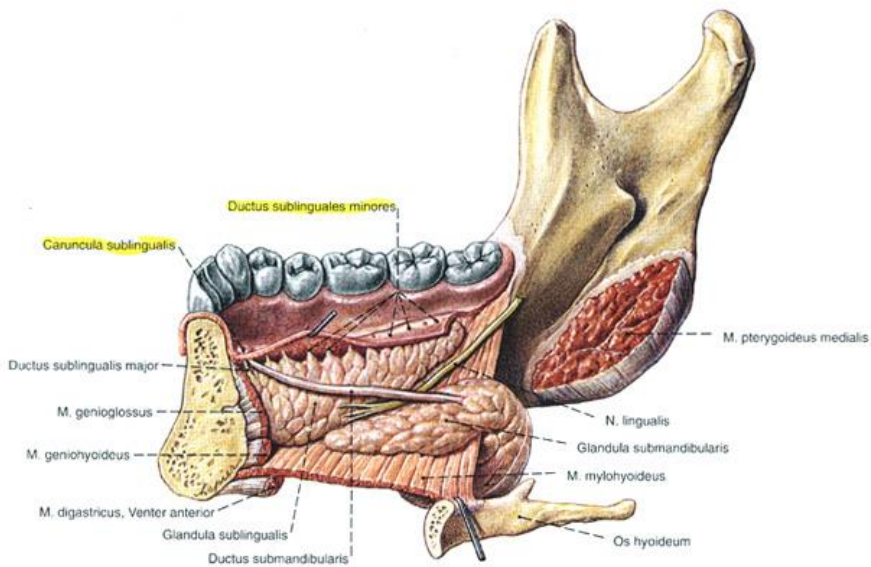
# REGIO SUBLINGUALIS



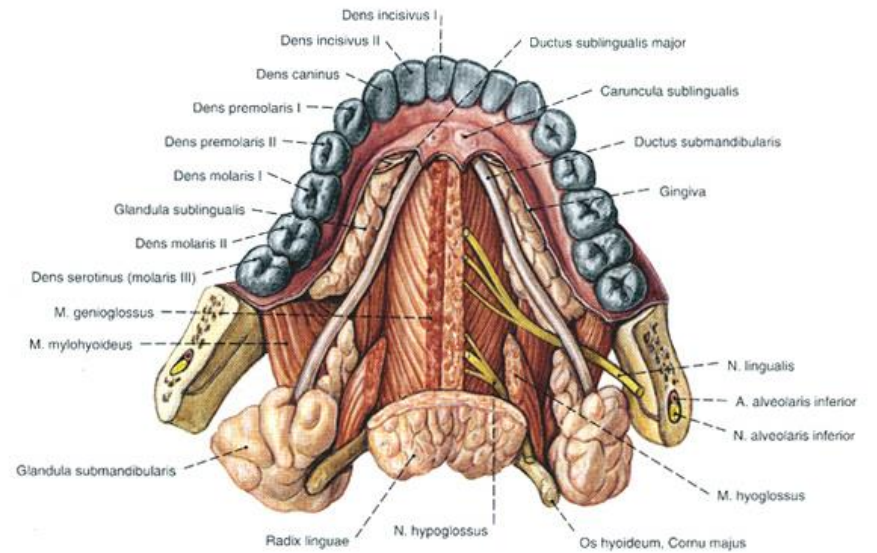
- frenulum linguae
- v. profunda linguae
- plica sublingual
- caruncula sublingualis (papilla)



# Regio sublingualis

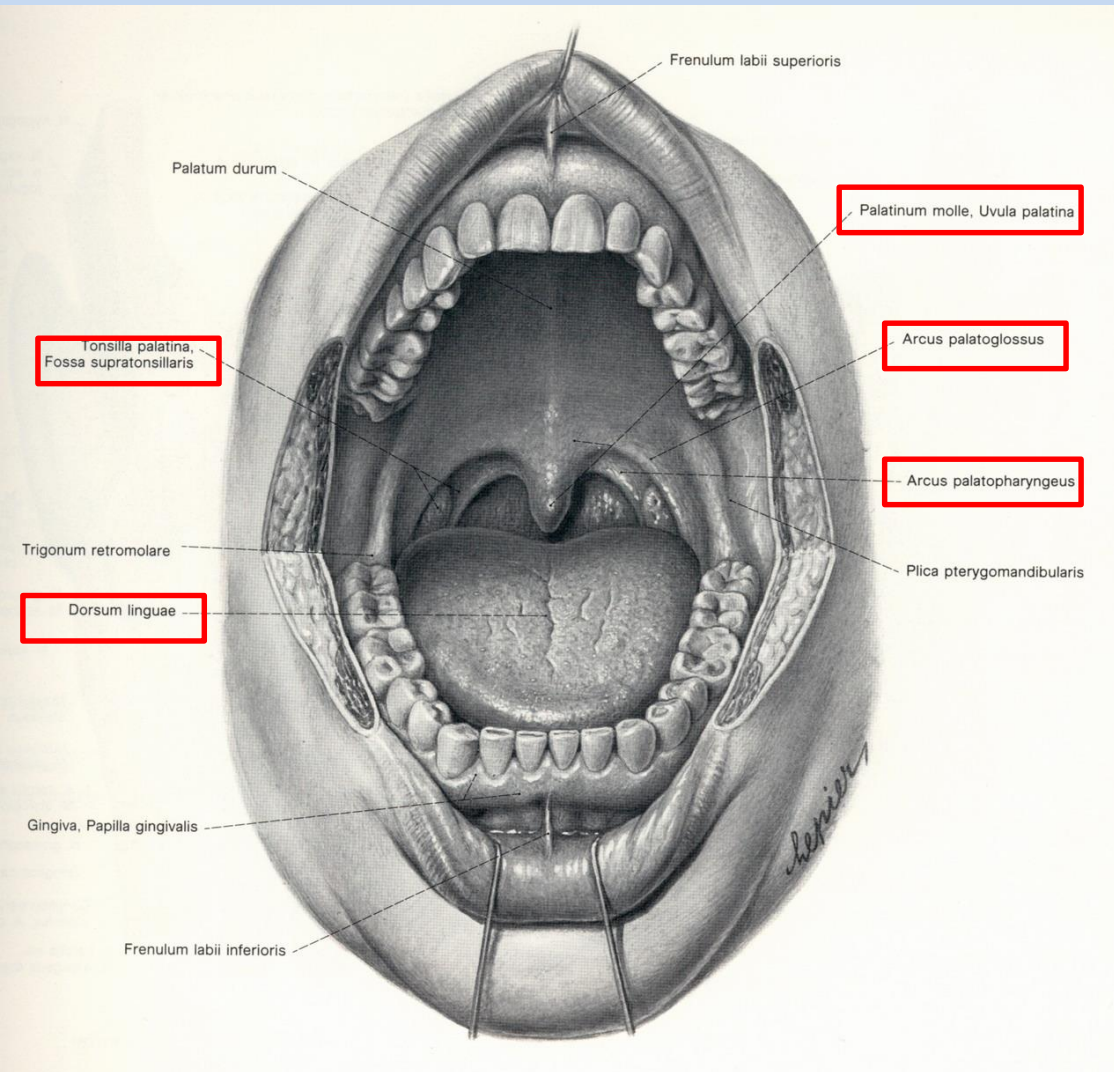


Lásd a n. lingualis és a ductus submandibularis szoros topográfiai viszonyát.



A n. lingualis és ductus submandibularis szoros topográfiai kapcsolata szembevetendő.

# Isthmus faucium



## Határai:

Pars follicularis linguae

Szájpadívek:

- Arcus palatoglossus
  - Arcus palatopharyngeus
- } Fossa tonsillaris

Ínyvitorla: Palatum velum és az Uvula



Klinikum: Tonsillitis follicularis

Tonsila palatina vérellátása:

1. A. palatina ascendens
2. A. pharyngea ascendens
3. Rr. tonsillares (A. lingualis)
4. A. palatina descendens

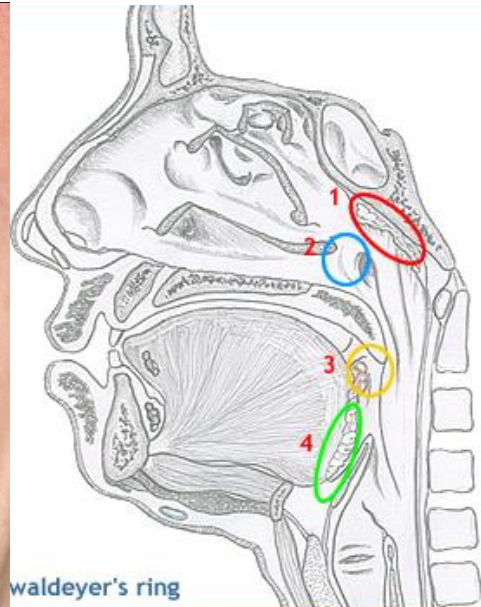
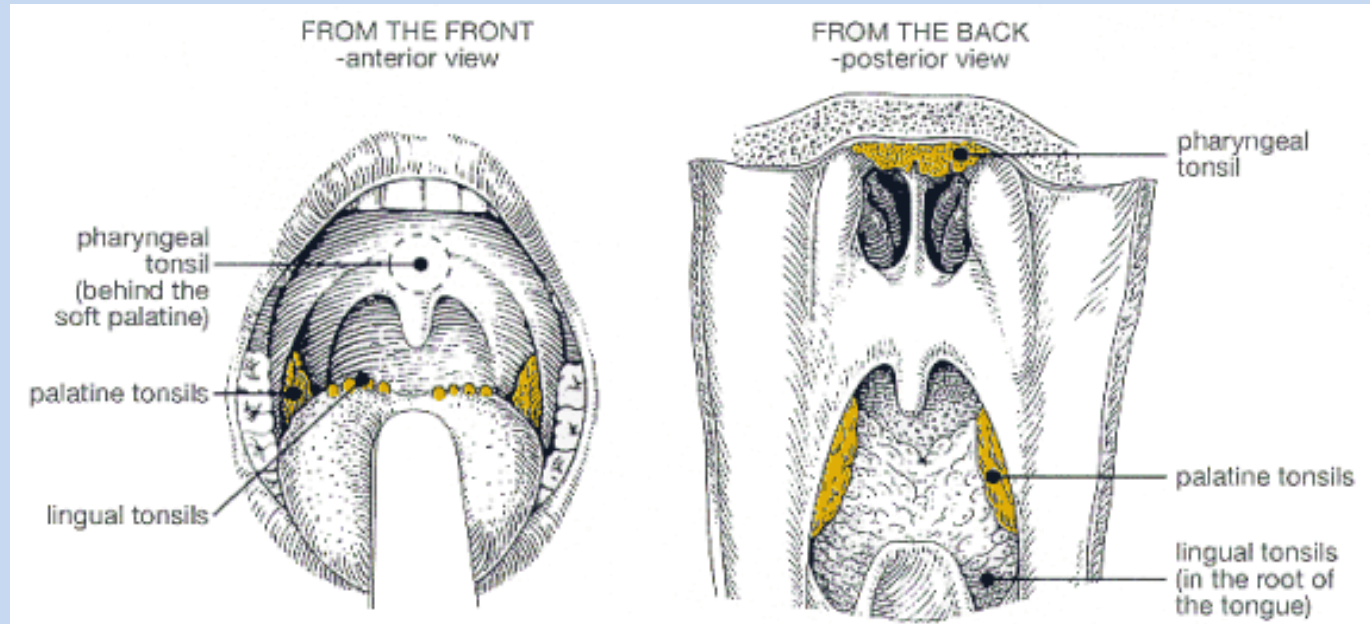
Nn. lymph. submandibulares



# Waldeyer féle lymphaticus garatgyűrű

Mandulák

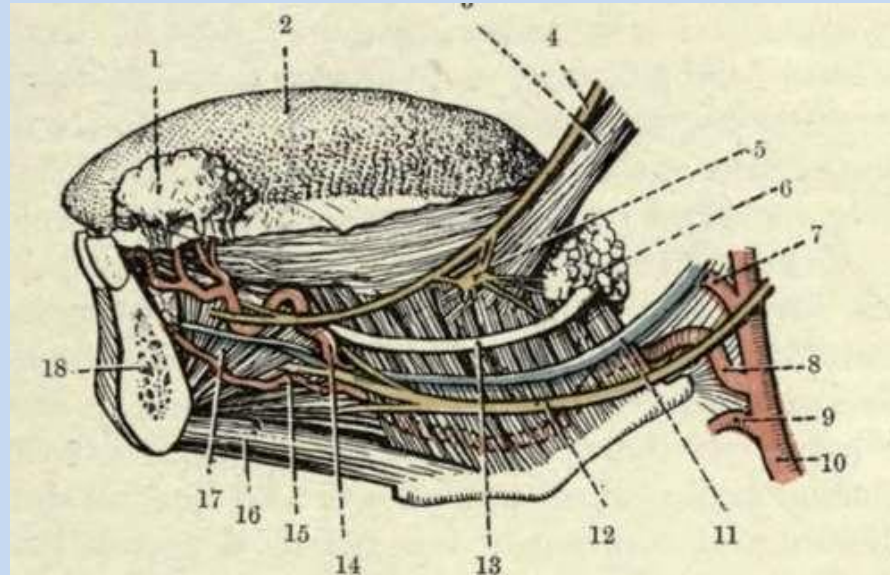
- pharyngea
- tubaria
- palatina
- lingualis



A mandulák vérellátása

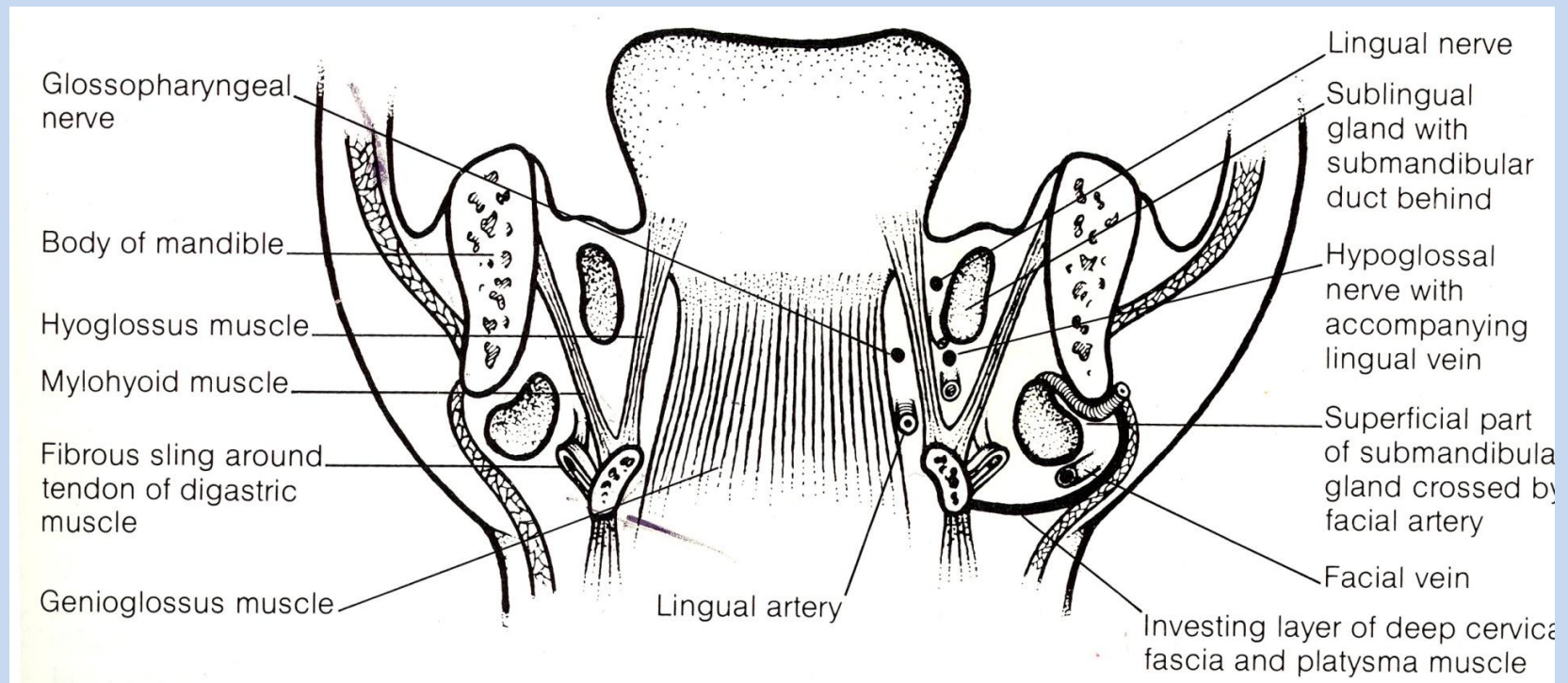
- A. palatina desc. (A. maxillary)
- A. palatina asc. (A. facialis)
- A. pharyngea asc. (A. carotis externa)
- A. lingualis (A. Carotis externa)

# Sulcus lateralis linguae



## Benne haladó képletek:

- N. lingualis
- Ductus submandibularis
- N. hypoglossus
- (V. sublingualis)





# Sulcus medialis linguae

## Határai:

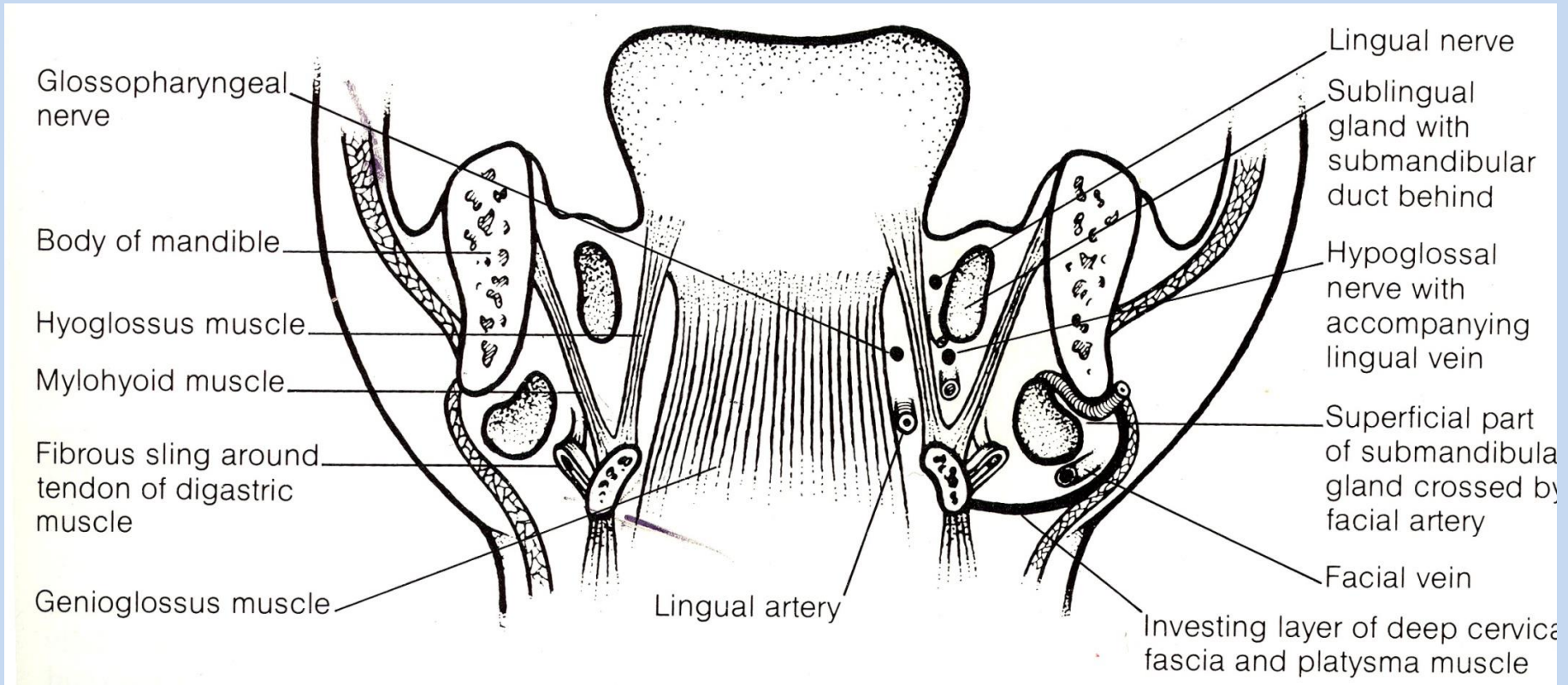
medial: M. genioglossus és M. geniohyoideus

lateral: M. hyoglossus

## Benne haladó képletek:

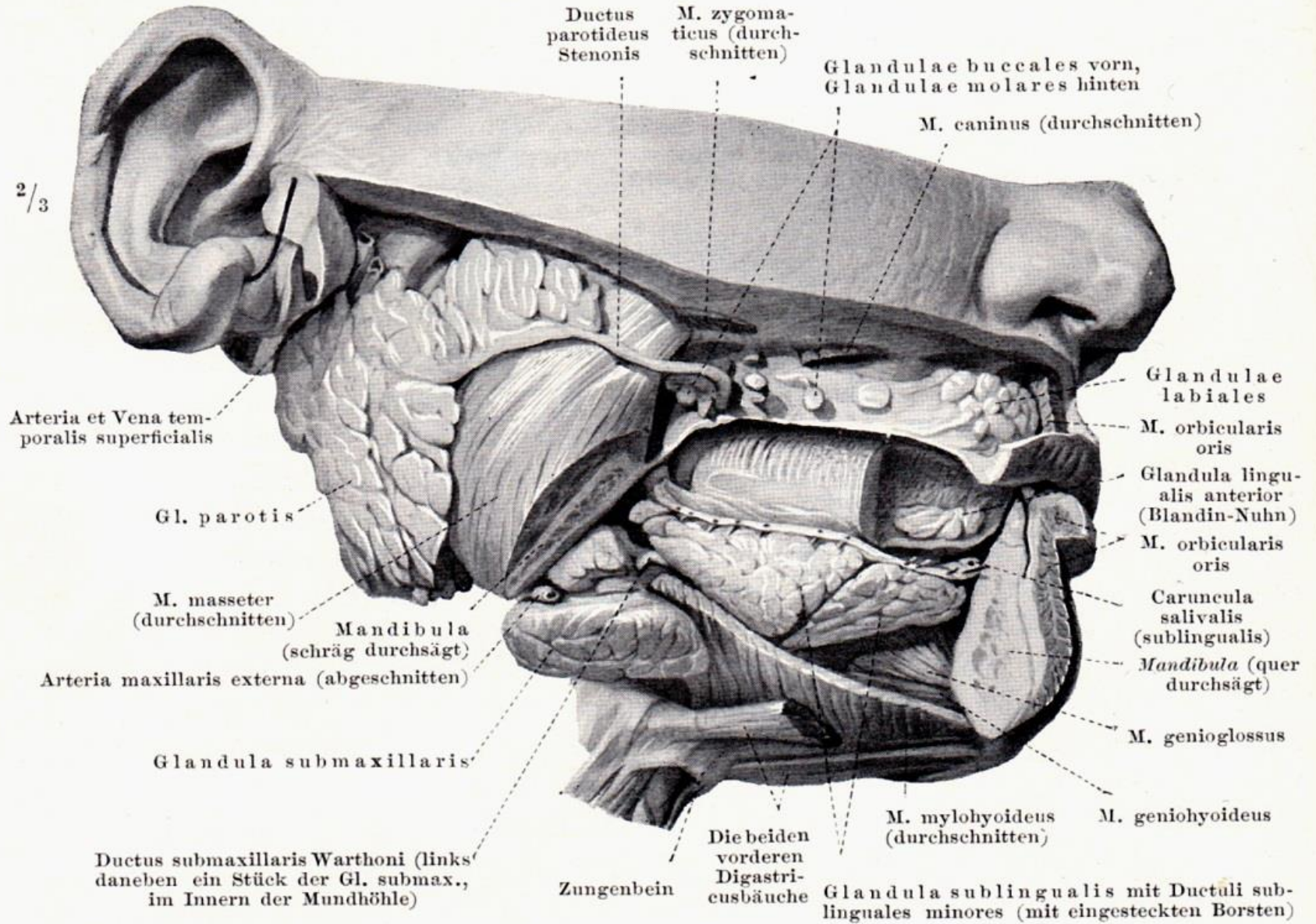
A. lingualis

(N. glossopharyngeus)





2/3



Ductus parotideus Stenosis

M. zygomaticus (durchschnitten)

Glandulae buccales vorn, Glandulae molares hinten

M. caninus (durchschnitten)

Arteria et Vena temporalis superficialis

Gl. parotis

M. masseter (durchschnitten)

Mandibula (schräg durchsägt)

Arteria maxillaris externa (abgeschnitten)

Glandula submaxillaris

Ductus submaxillaris Warthoni (links daneben ein Stück der Gl. submax., im Innern der Mundhöhle)

Zungenbein

Die beiden vorderen Digastricusbäuche

M. mylohyoideus (durchschnitten)

M. geniohyoideus

Glandula sublingualis mit Ductuli sublinguales minores (mit eingesteckten Borsten)

Glandulae labiales

M. orbicularis oris

Glandula lingualis anterior (Blandin-Nuhn)

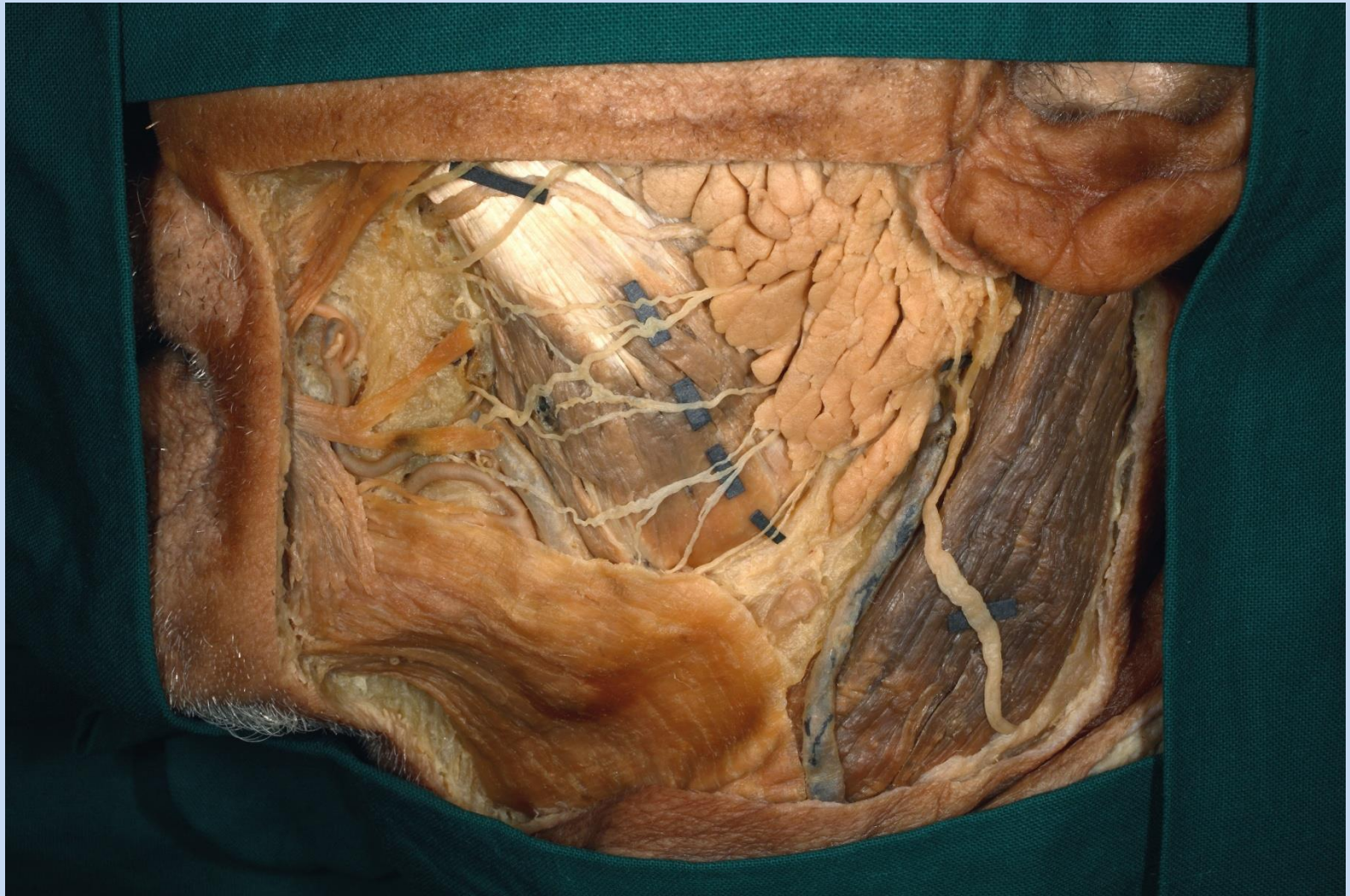
M. orbicularis oris

Caruncula salivaris (sublingualis)

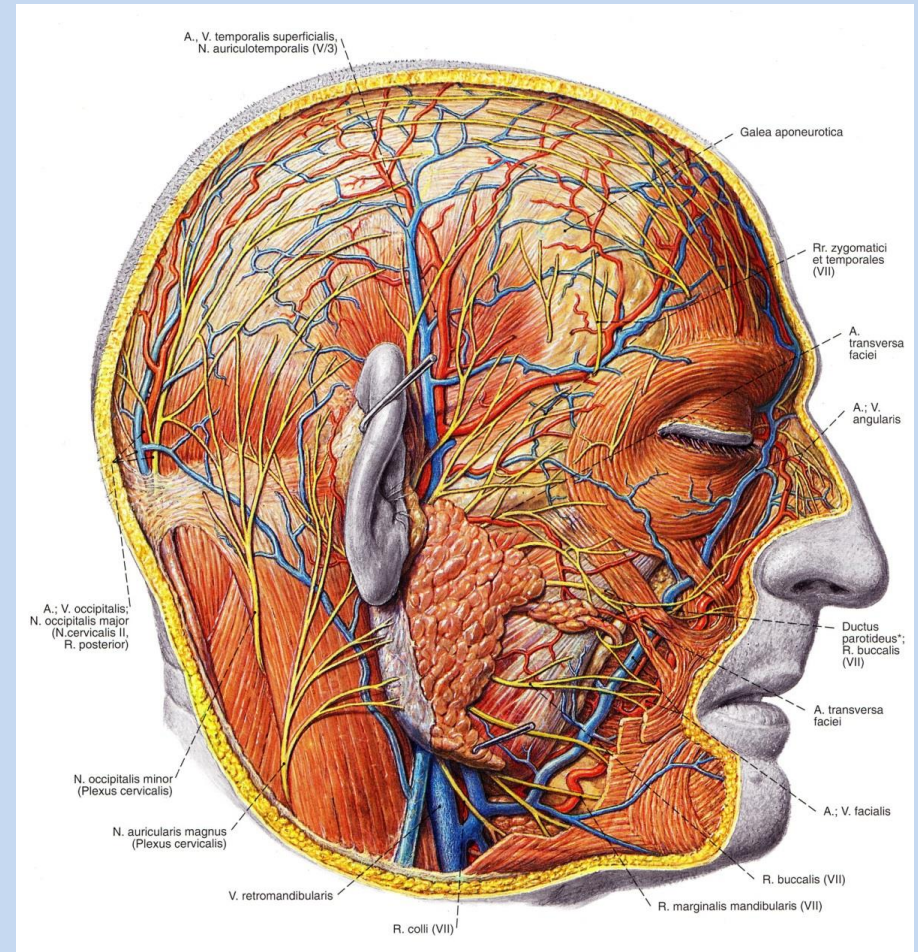
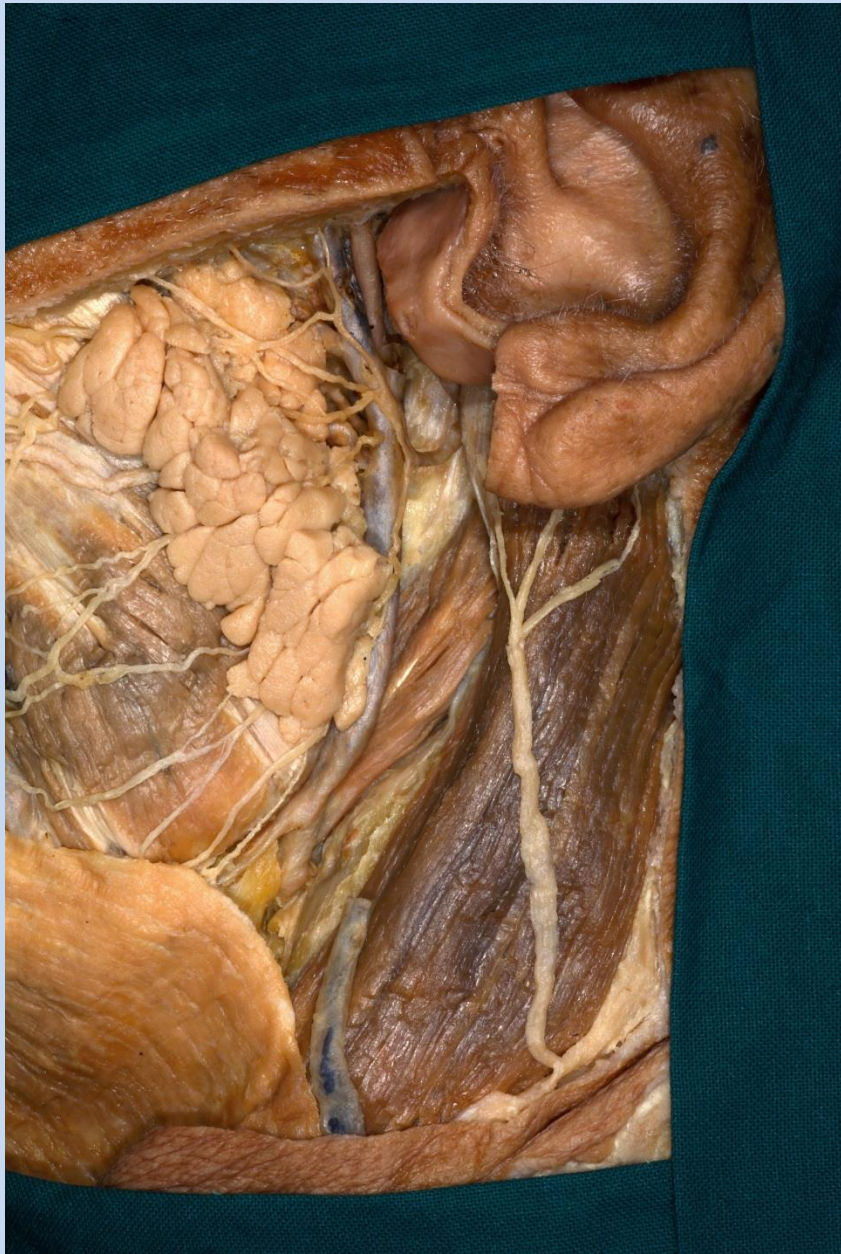
Mandibula (quer durchsägt)

M. genioglossus



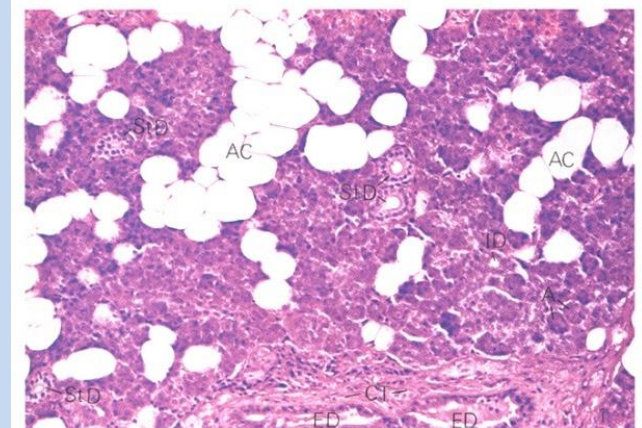
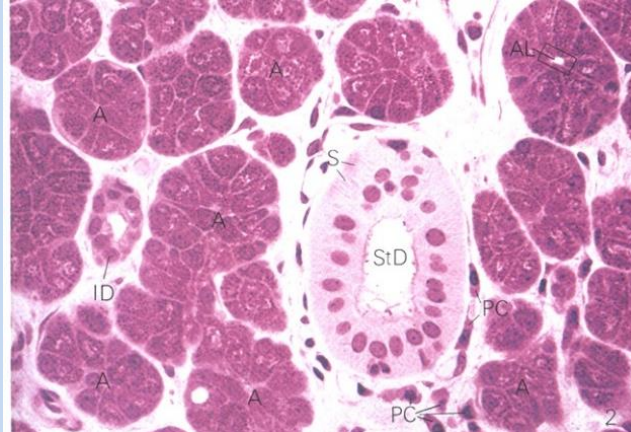
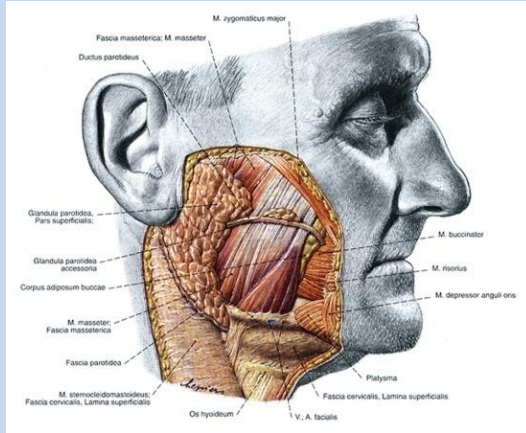








# PAROTIS



## NIDUS PAROTIDEUS

anterior:

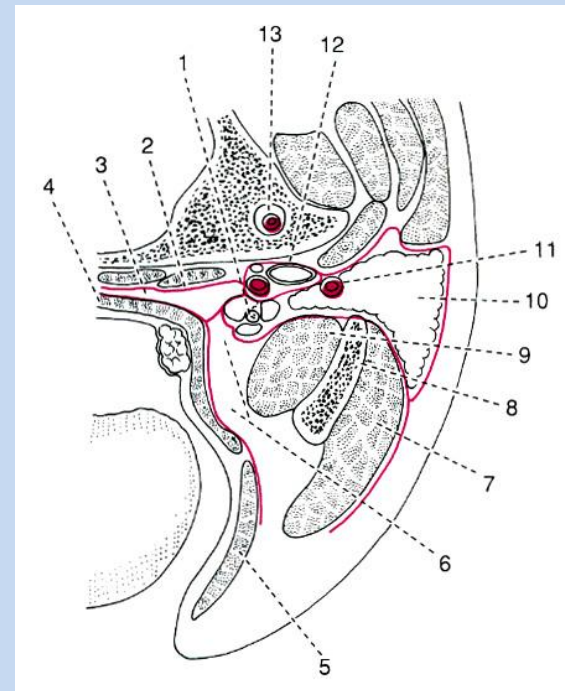
- m. masseter
- ramus mandibulae
- m. pterygoideus med.

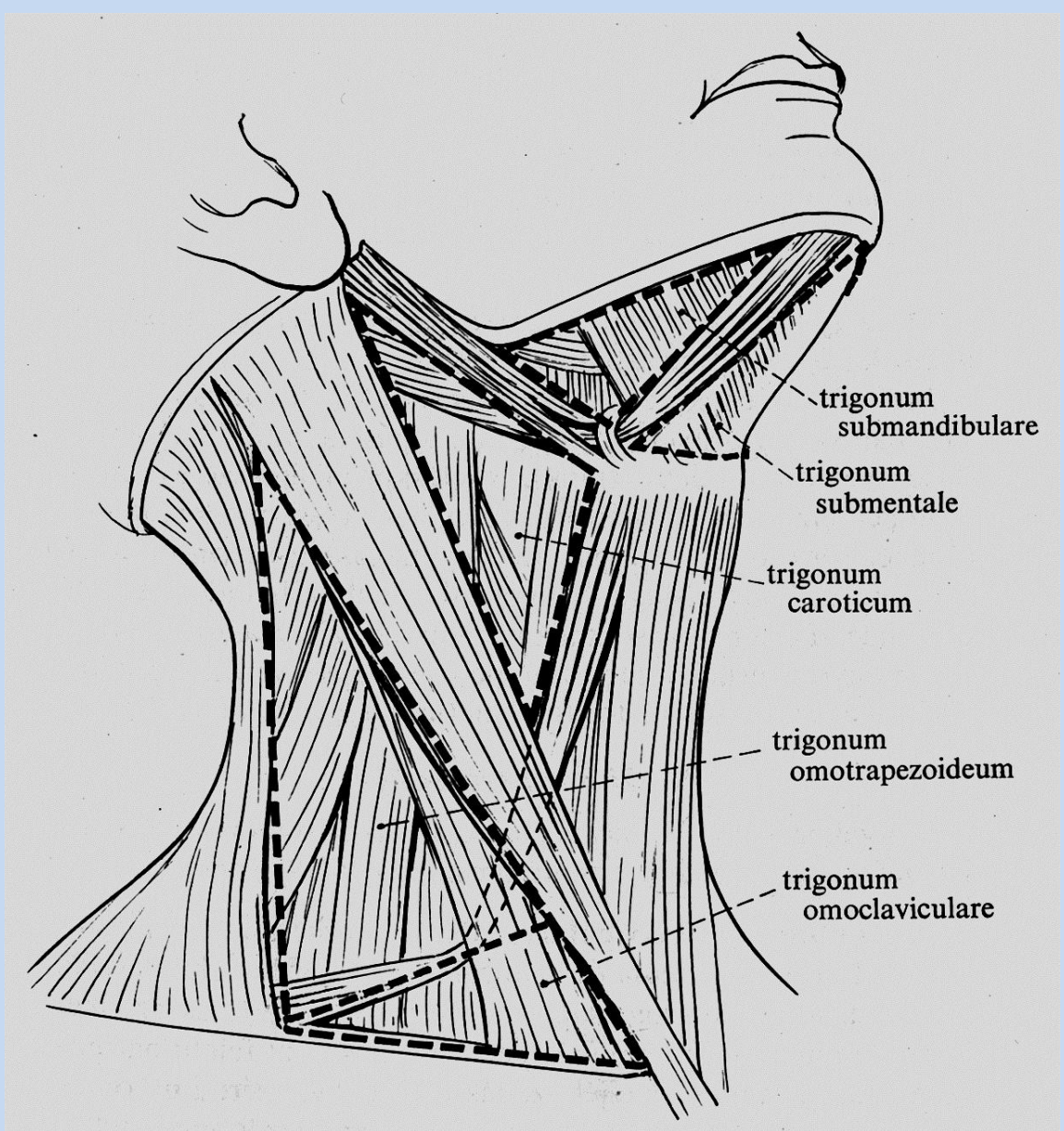
posterior:

- m. sternocleidomastoideus
- m. digastricus

medialis:

- m. stylohyoideus
- m. stylopharyngeus
- m. styloglossus





trigonum  
submandibulare

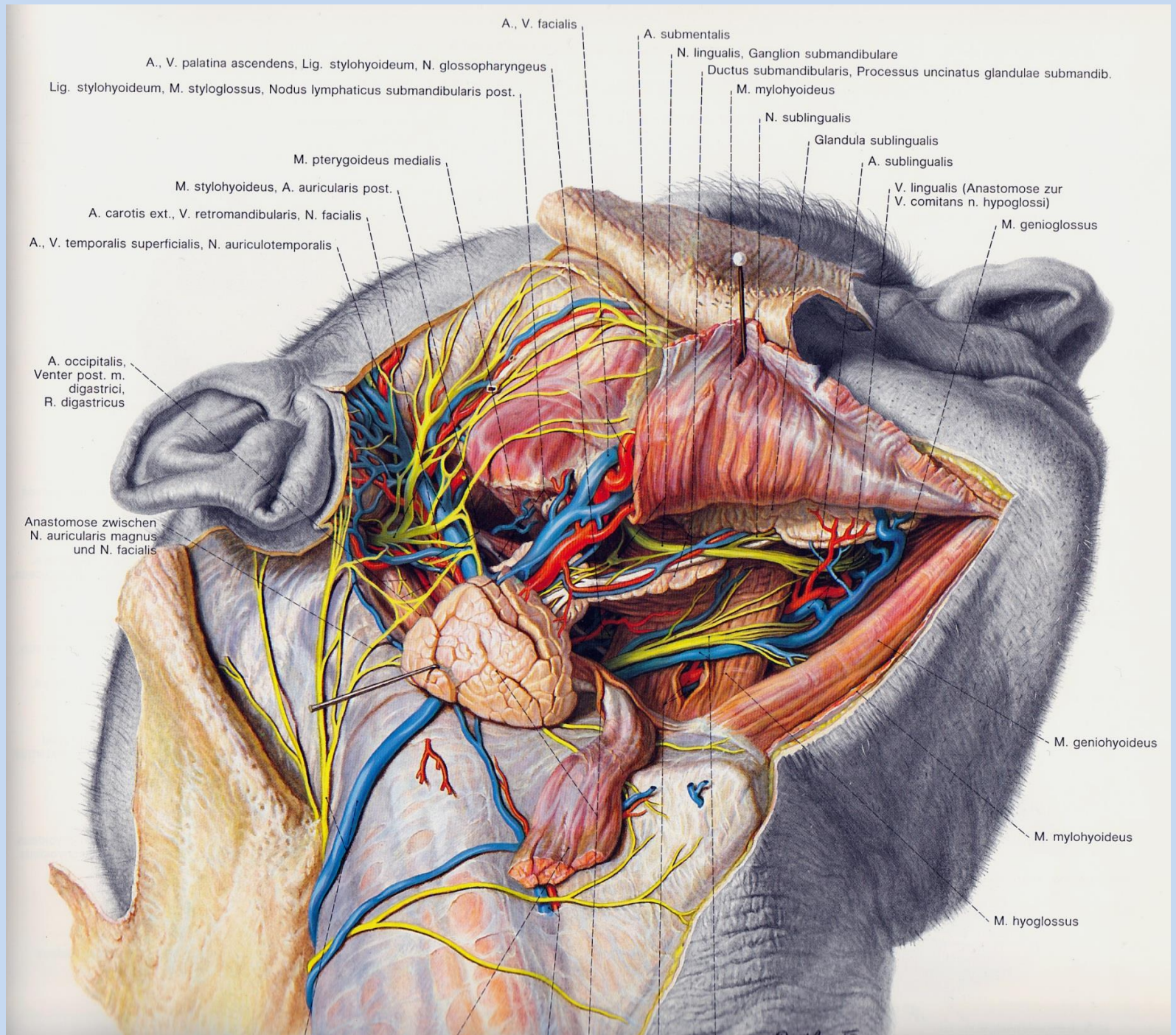
trigonum  
submentale

trigonum  
caroticum

trigonum  
omotrapezoideum

trigonum  
omoclaviculare





A., V. palatina ascendens, Lig. stylohyoideum, N. glossopharyngeus  
Lig. stylohyoideum, M. styloglossus, Nodus lymphaticus submandibularis post.

A., V. facialis

A. submentalis

N. lingualis, Ganglion submandibulare

Ductus submandibularis, Processus uncinatus glandulae submandib.

M. mylohyoideus

N. sublingualis

Glandula sublingualis

A. sublingualis

V. lingualis (Anastomose zur V. comitans n. hypoglossi)

M. genioglossus

M. pterygoideus medialis

M. stylohyoideus, A. auricularis post.

A. carotis ext., V. retromandibularis, N. facialis

A., V. temporalis superficialis, N. auriculotemporalis

A. occipitalis,  
Venter post. m. digastrici,  
R. digastricus

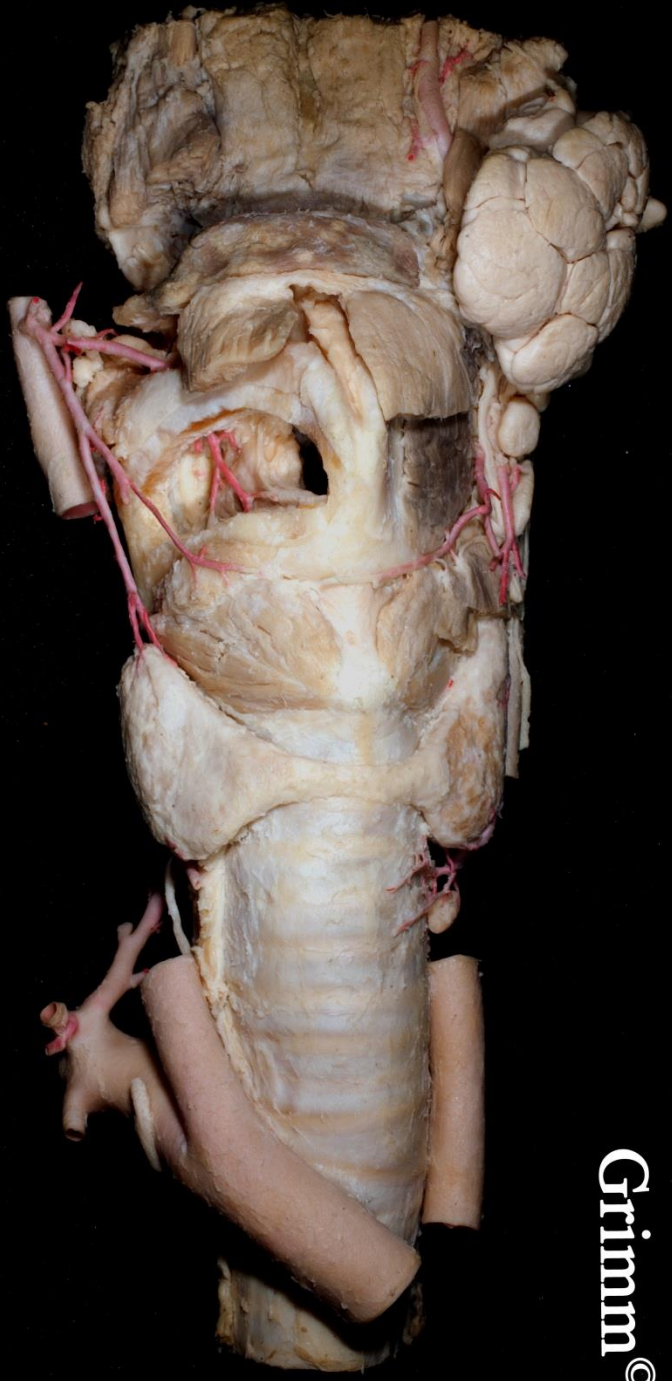
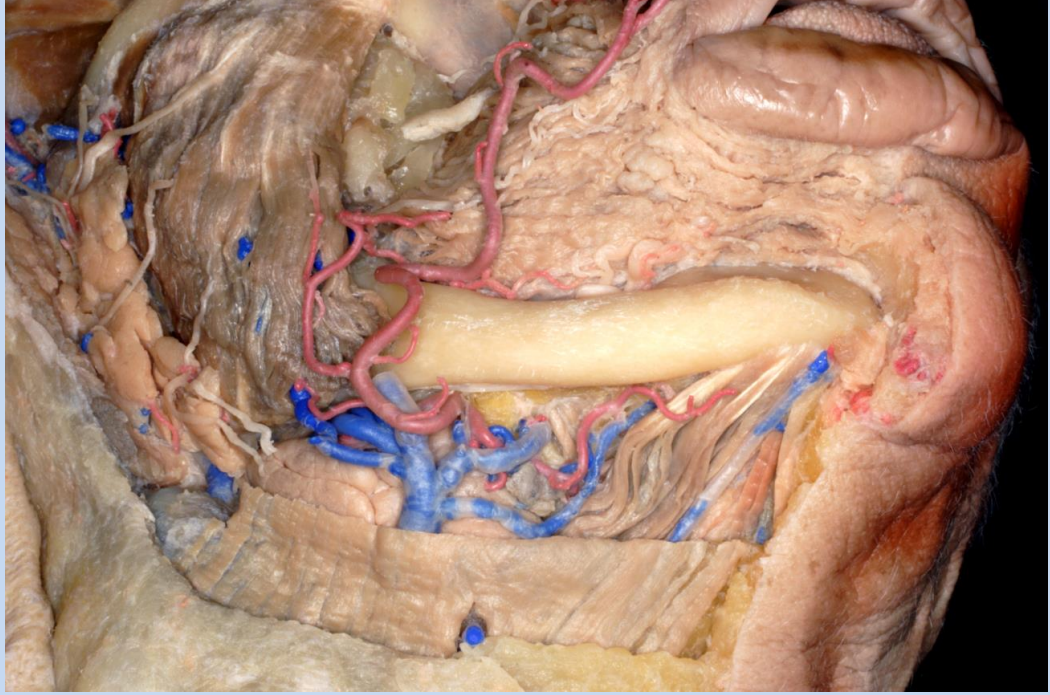
Anastomose zwischen  
N. auricularis magnus  
und N. facialis

M. geniohyoideus

M. mylohyoideus

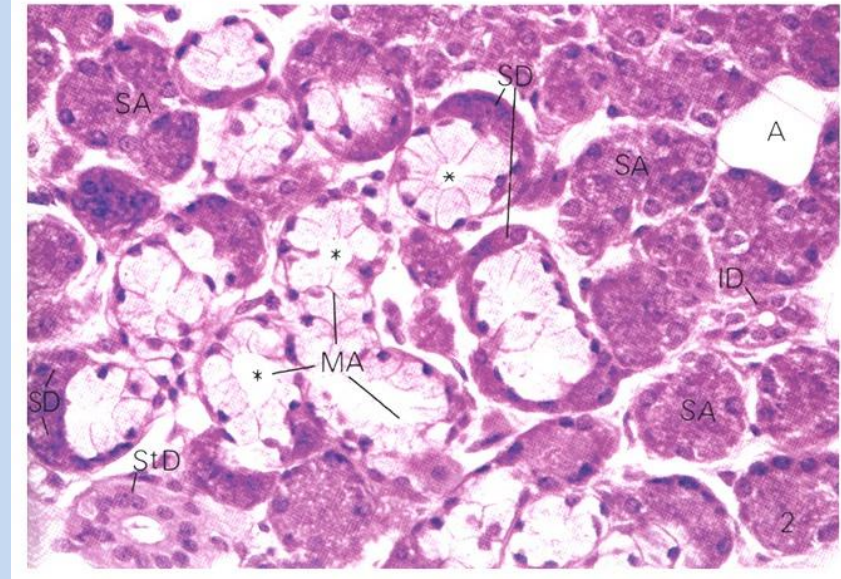
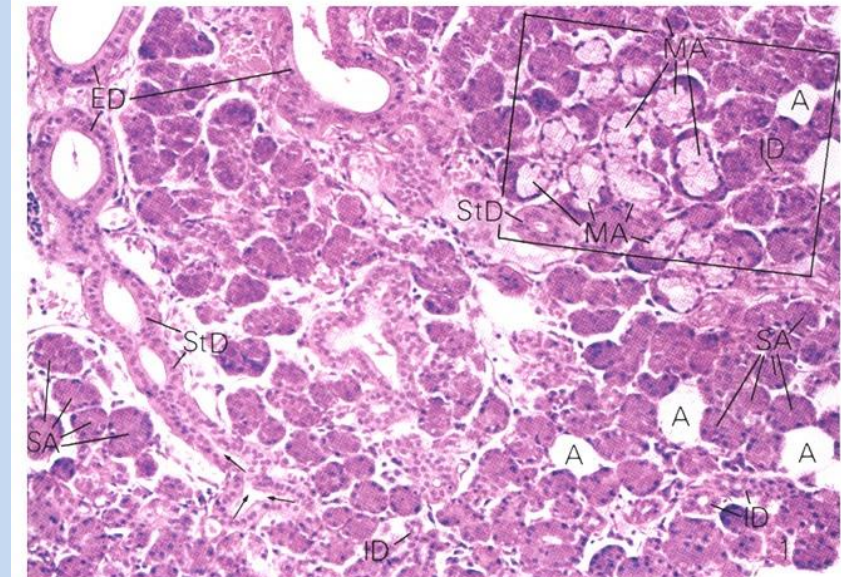
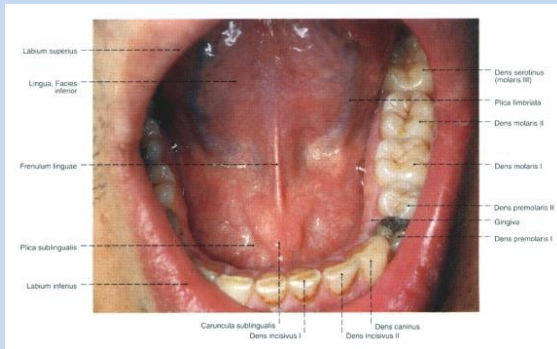
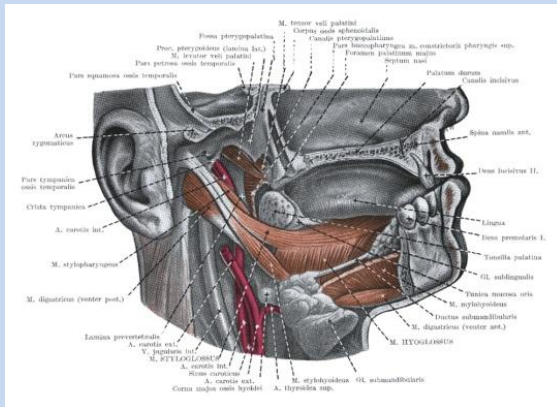
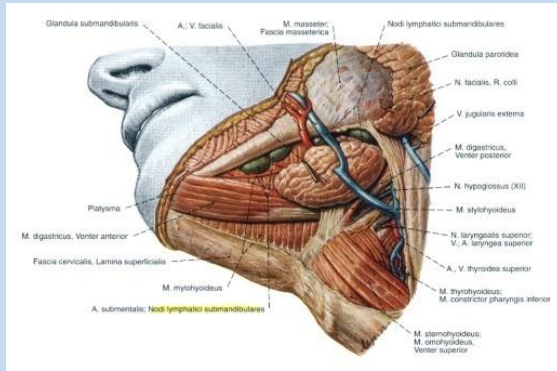
M. hyoglossus



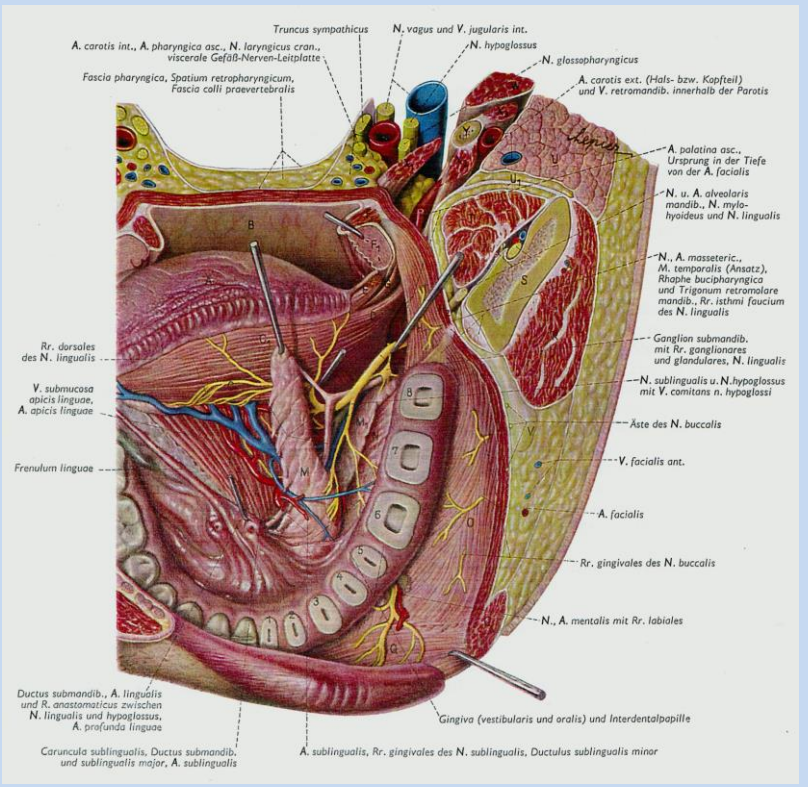
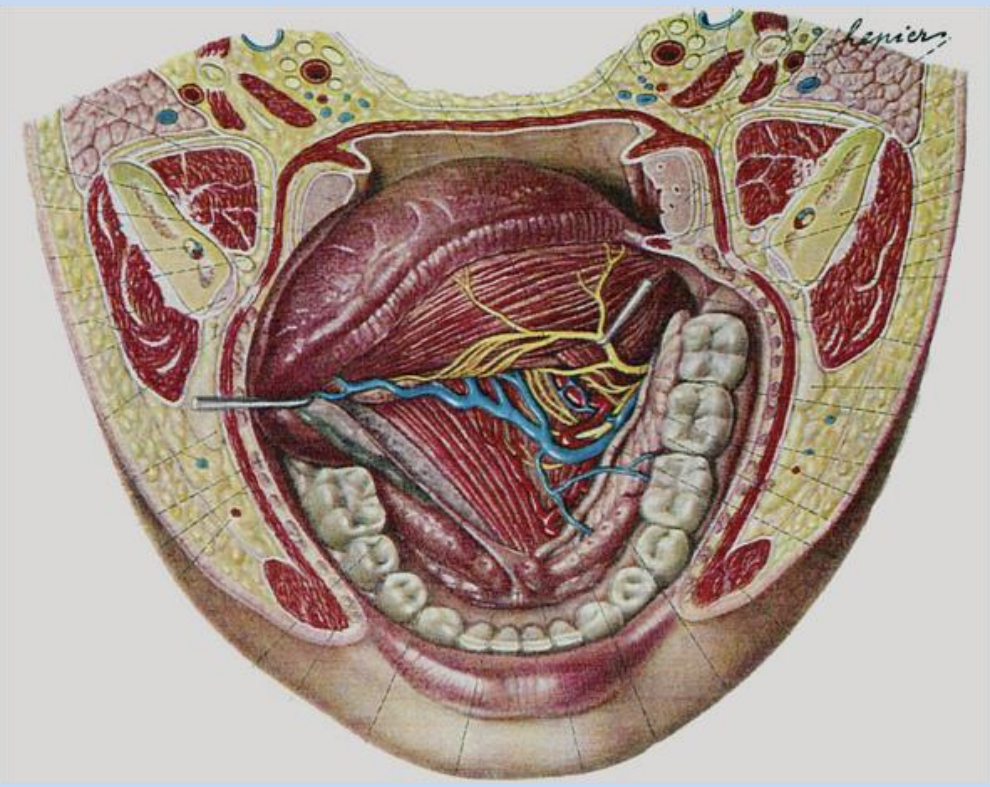




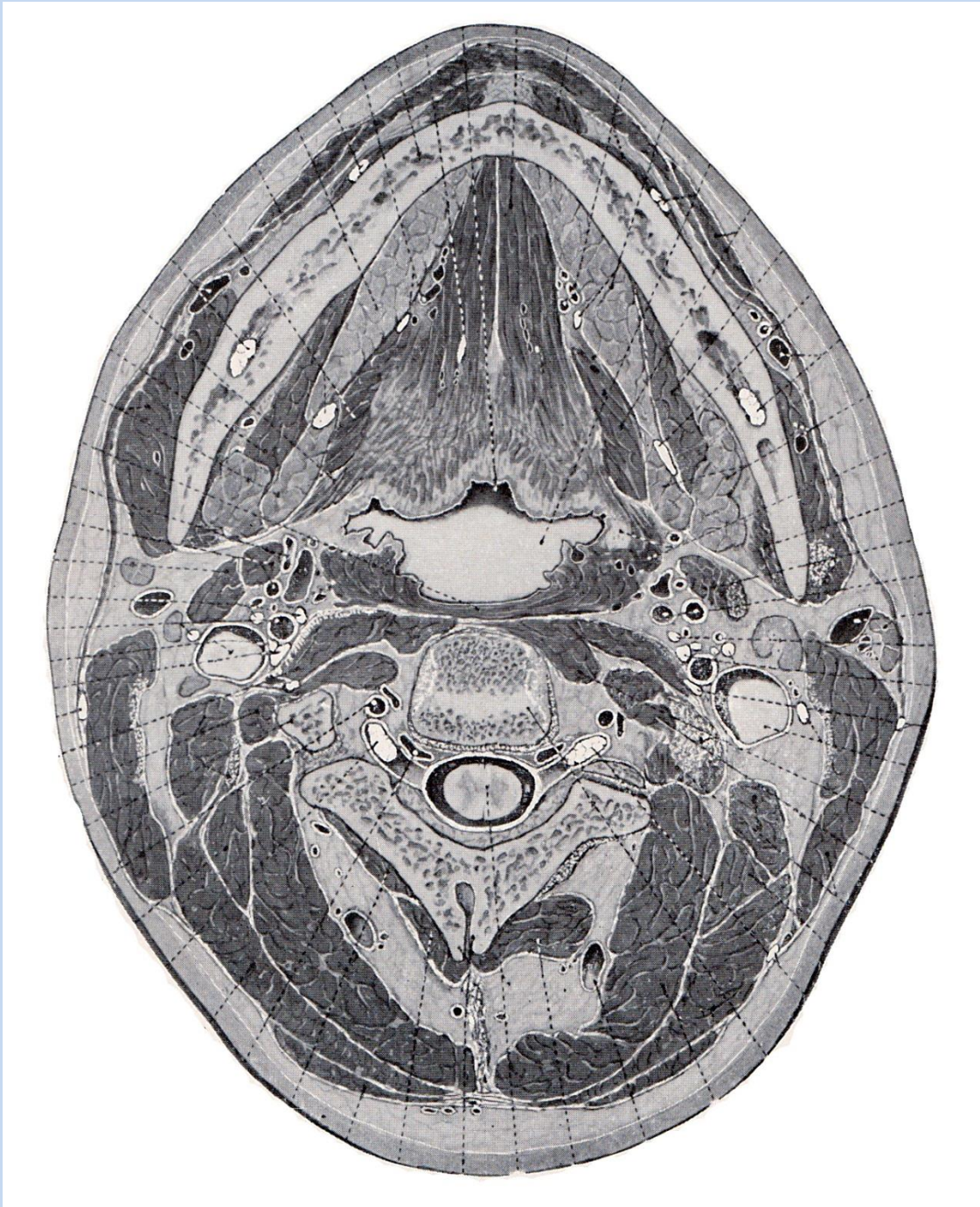
# GLANDULA SUBMANDIBULARIS





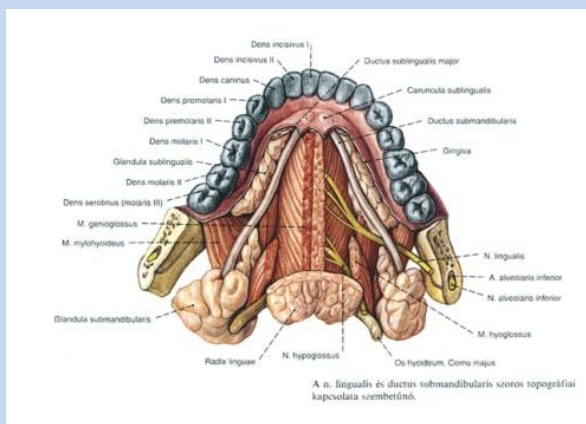
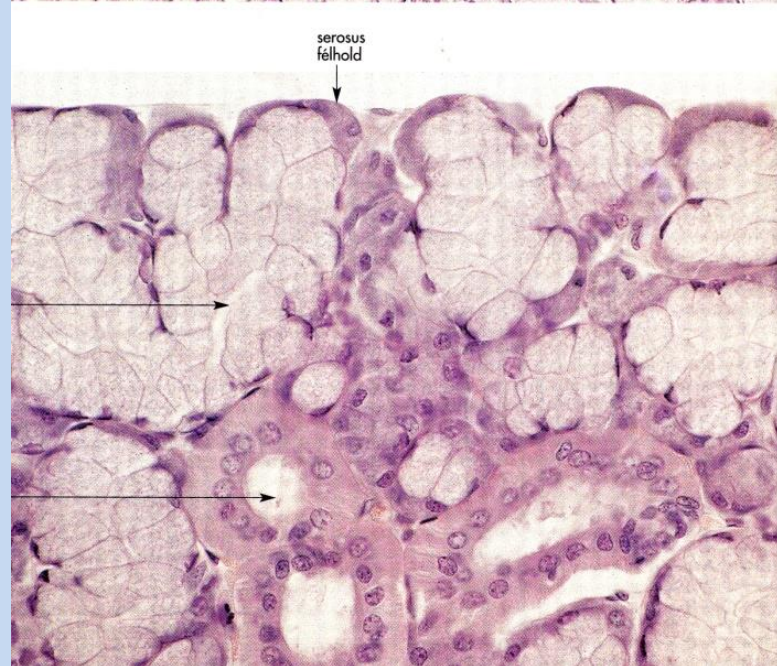
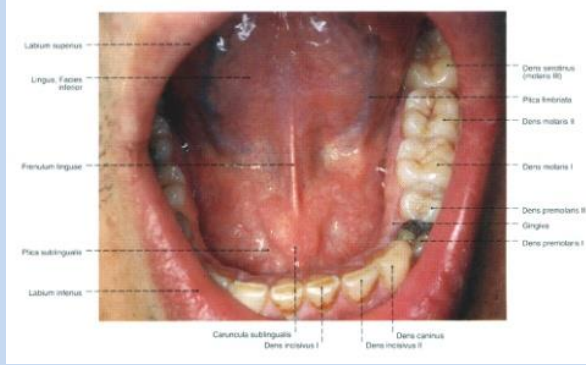
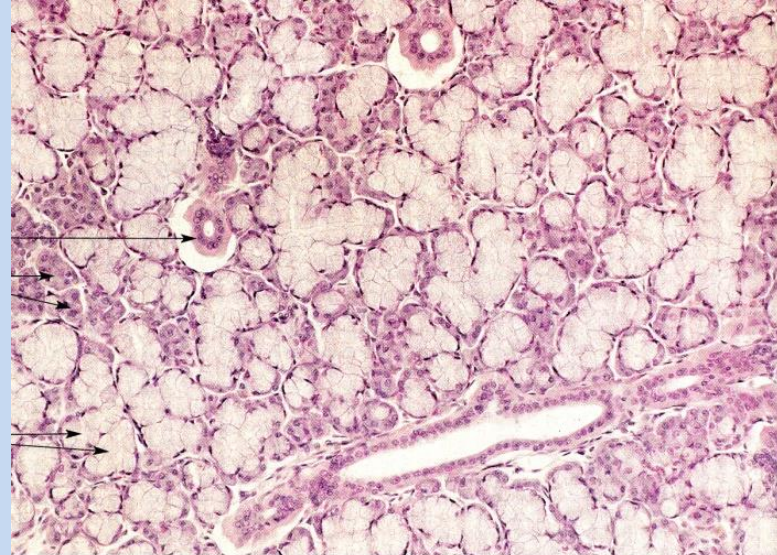
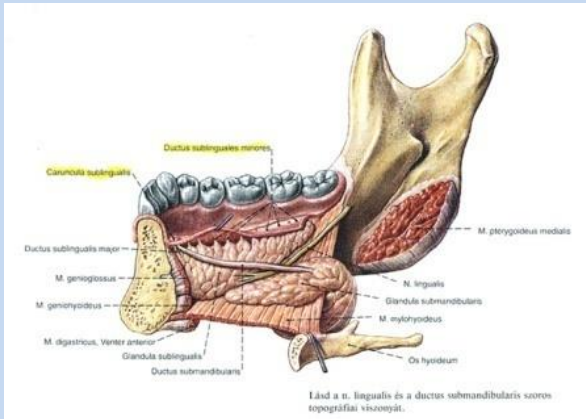








# GLANDULA SUBLINGUALIS





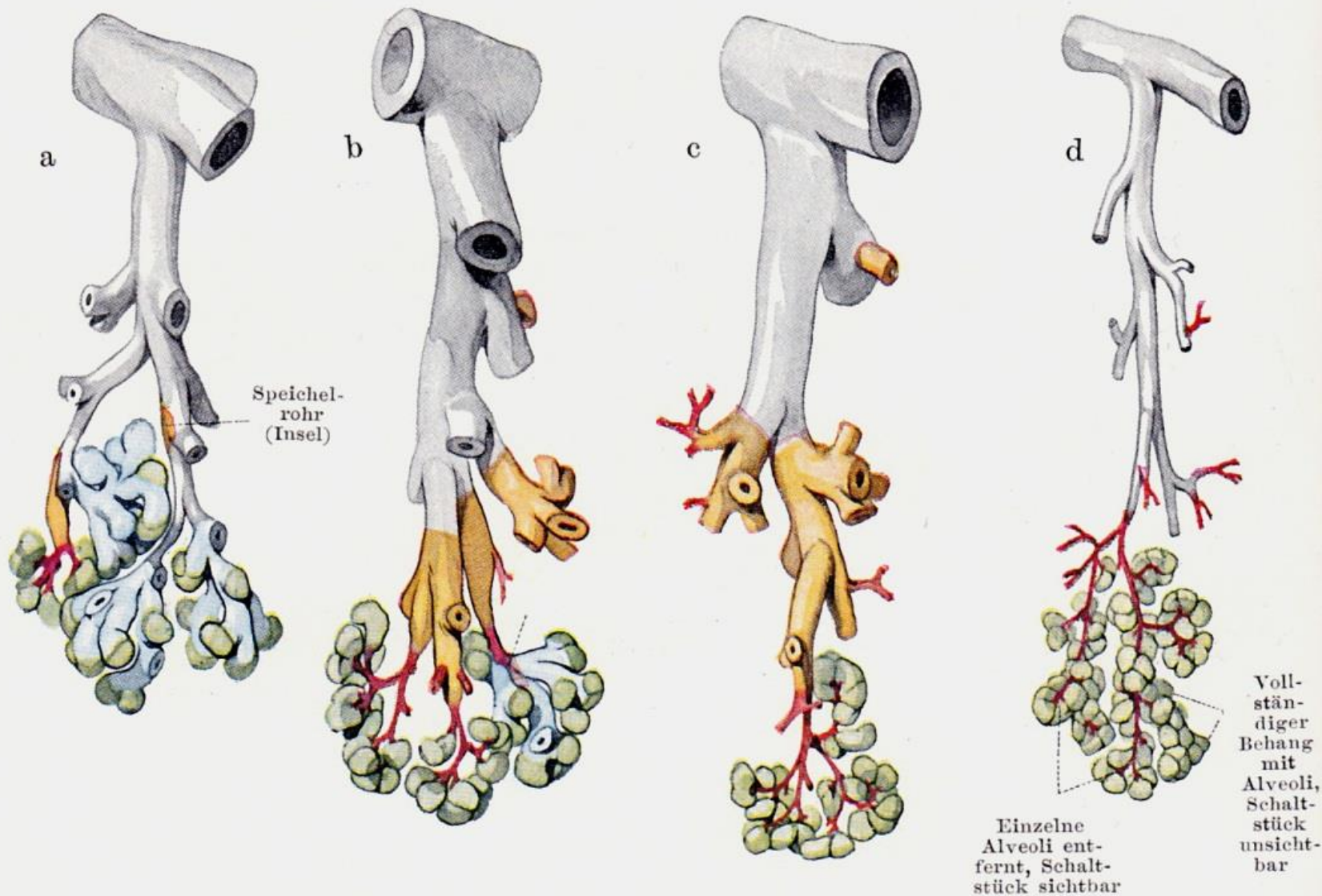


Abb. 40. Bau der Speicheldrüsen und des Pankreas (Bauchspeicheldrüse). Schemata. Ausführung weiß, Sekrettröhren orange, Schaltstücke rot, seröse Zellen der Endstücke grün, muköse Zellen blau.  
 a Glandula sublingualis. b Glandula submaxillaris. c Glandula parotis. d Pankreas.

# A GL. SUBMANDIBULARIS ÉS GL. SUBLINGUALIS ELHELYEZKEDÉSE

