

# A NŐI IVARSZERVEK

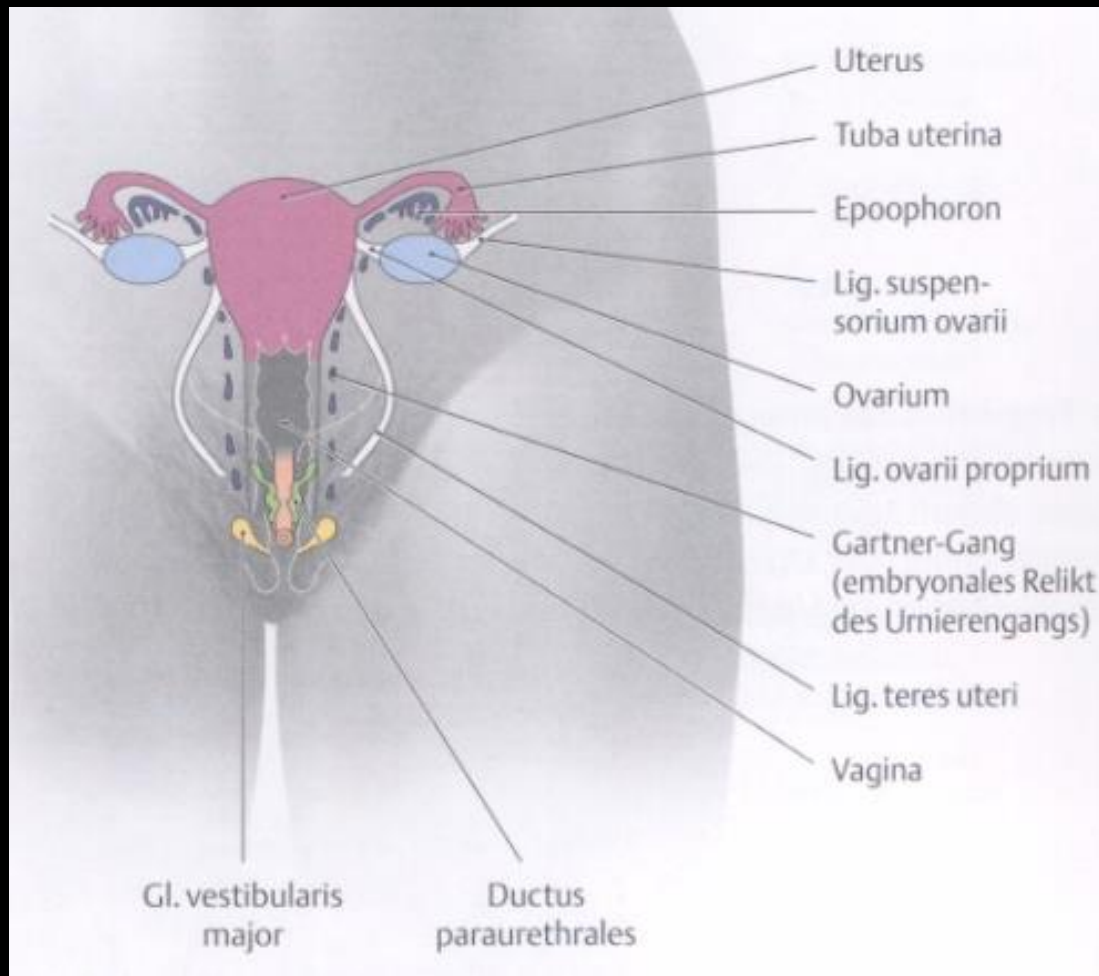
# Belső női nemi szervek

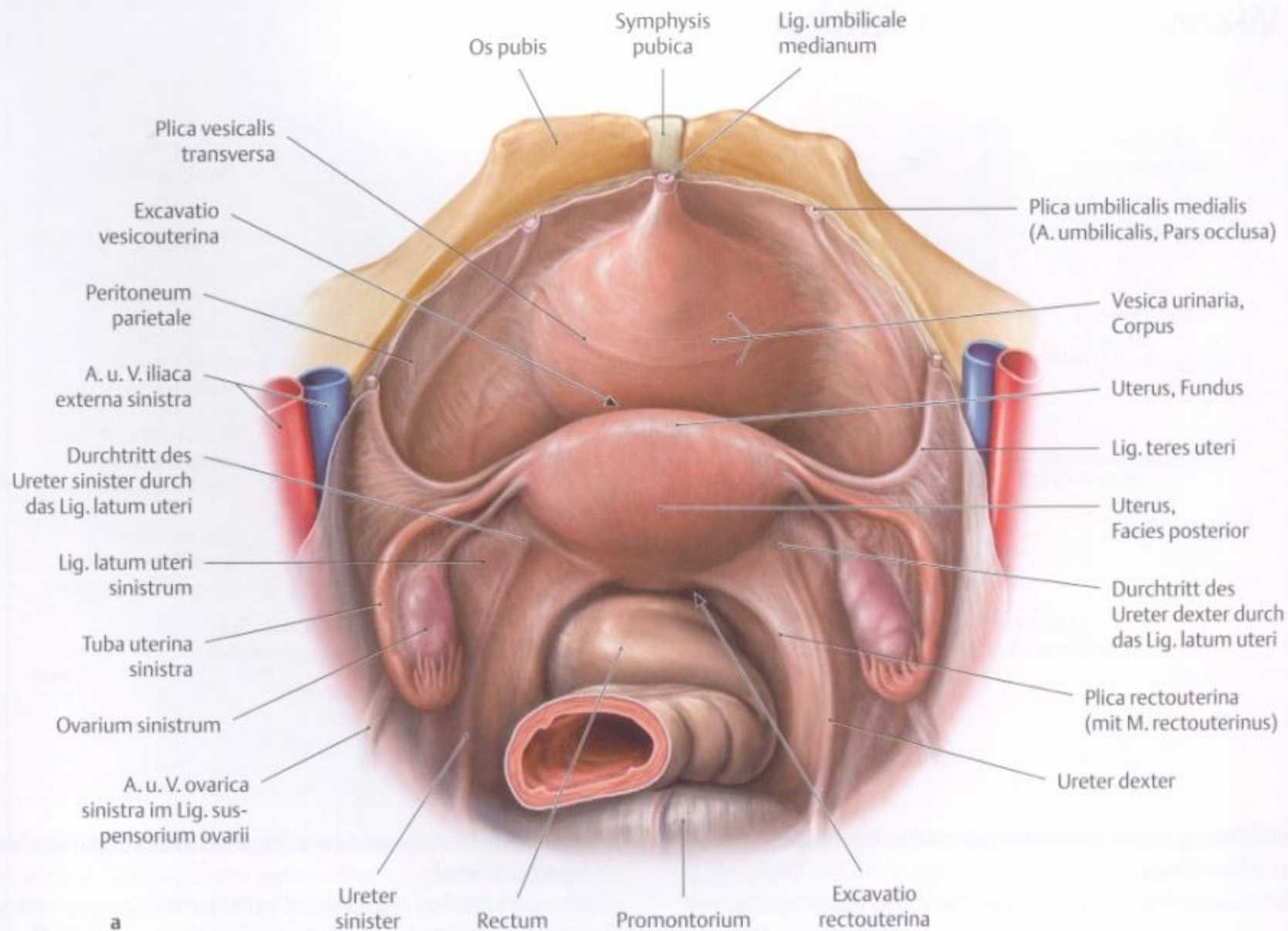
petefészek

petevezeték

méh

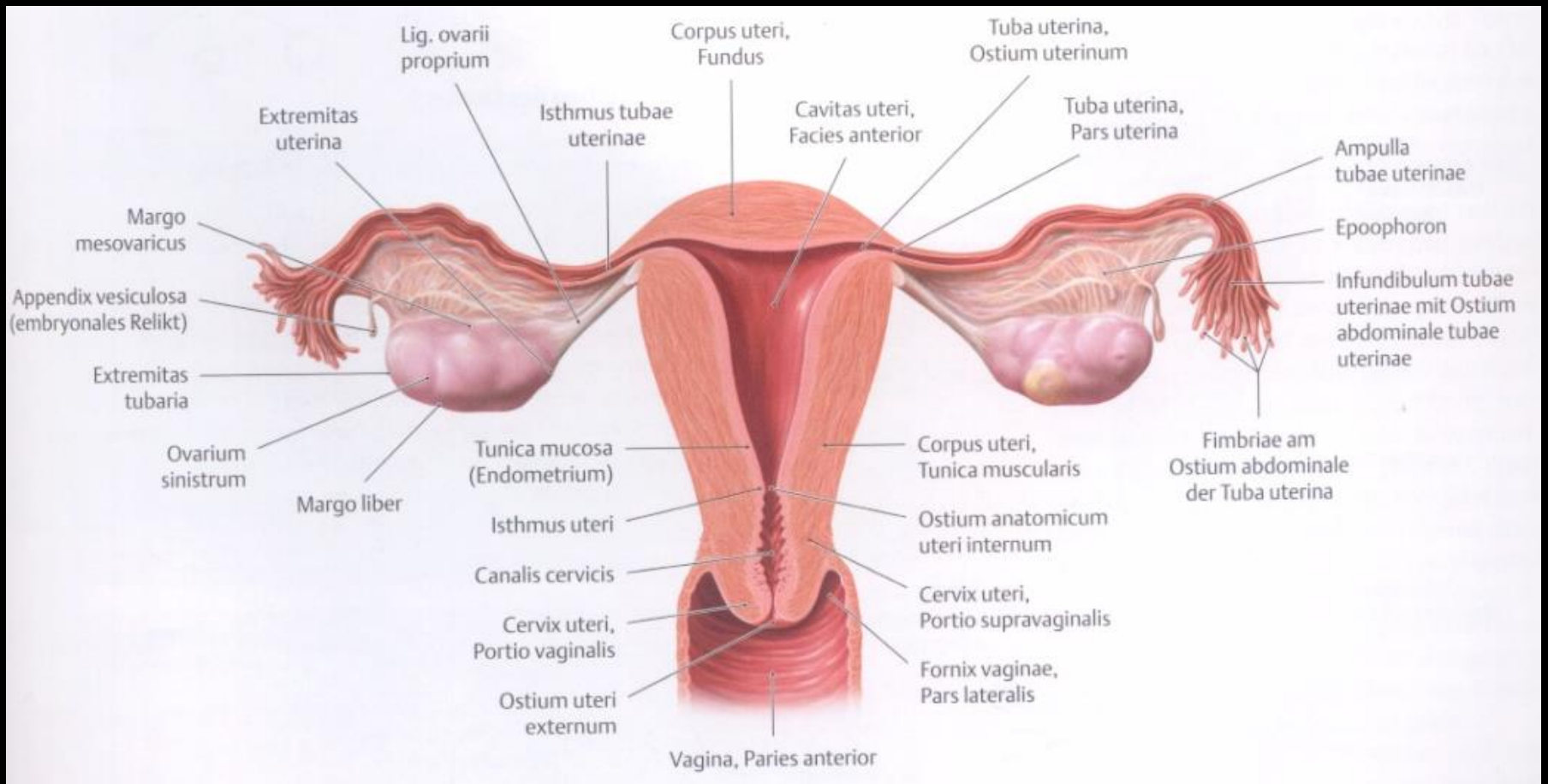
hüvely



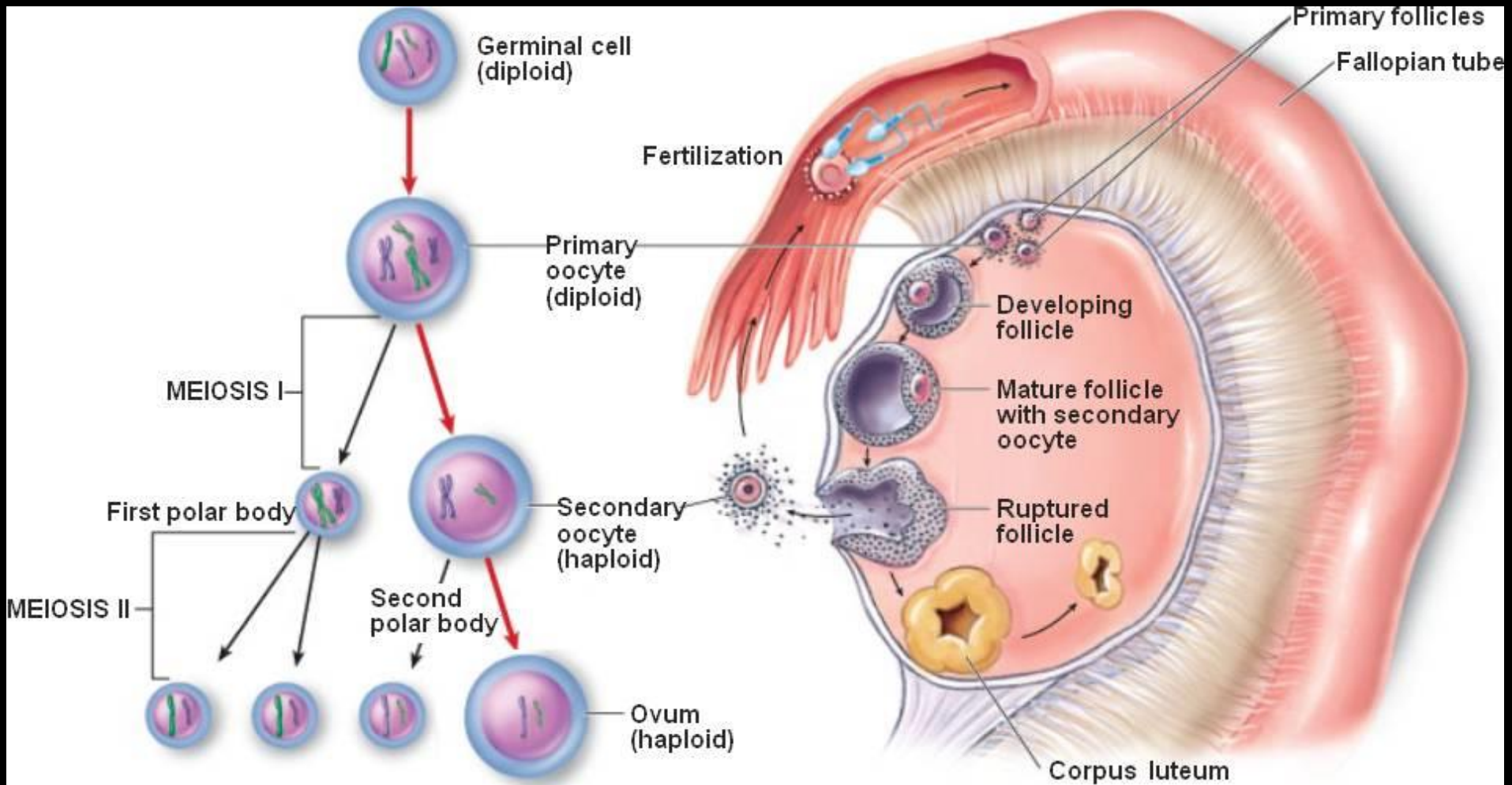


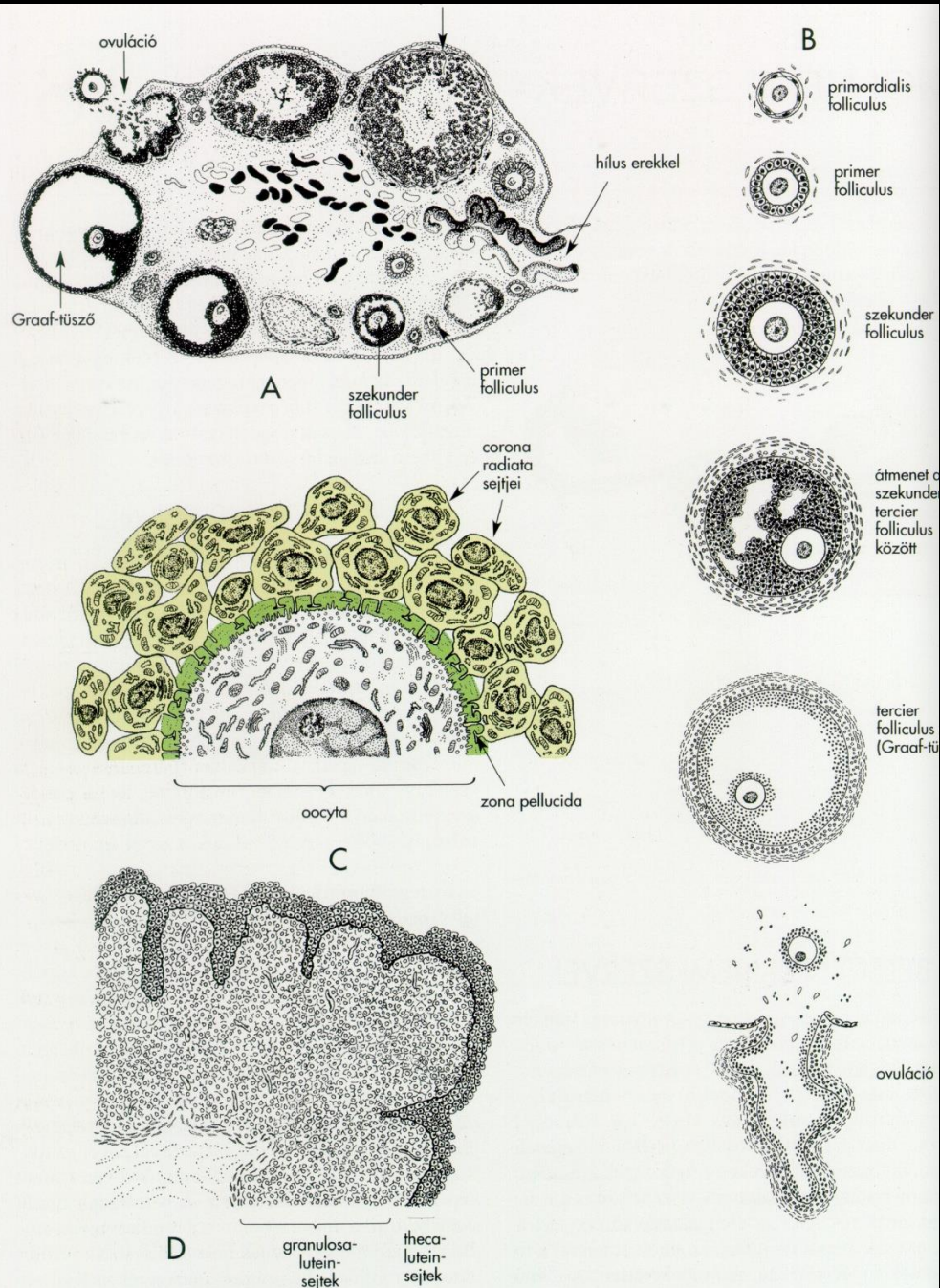
a

# Petefészek (ovarium)

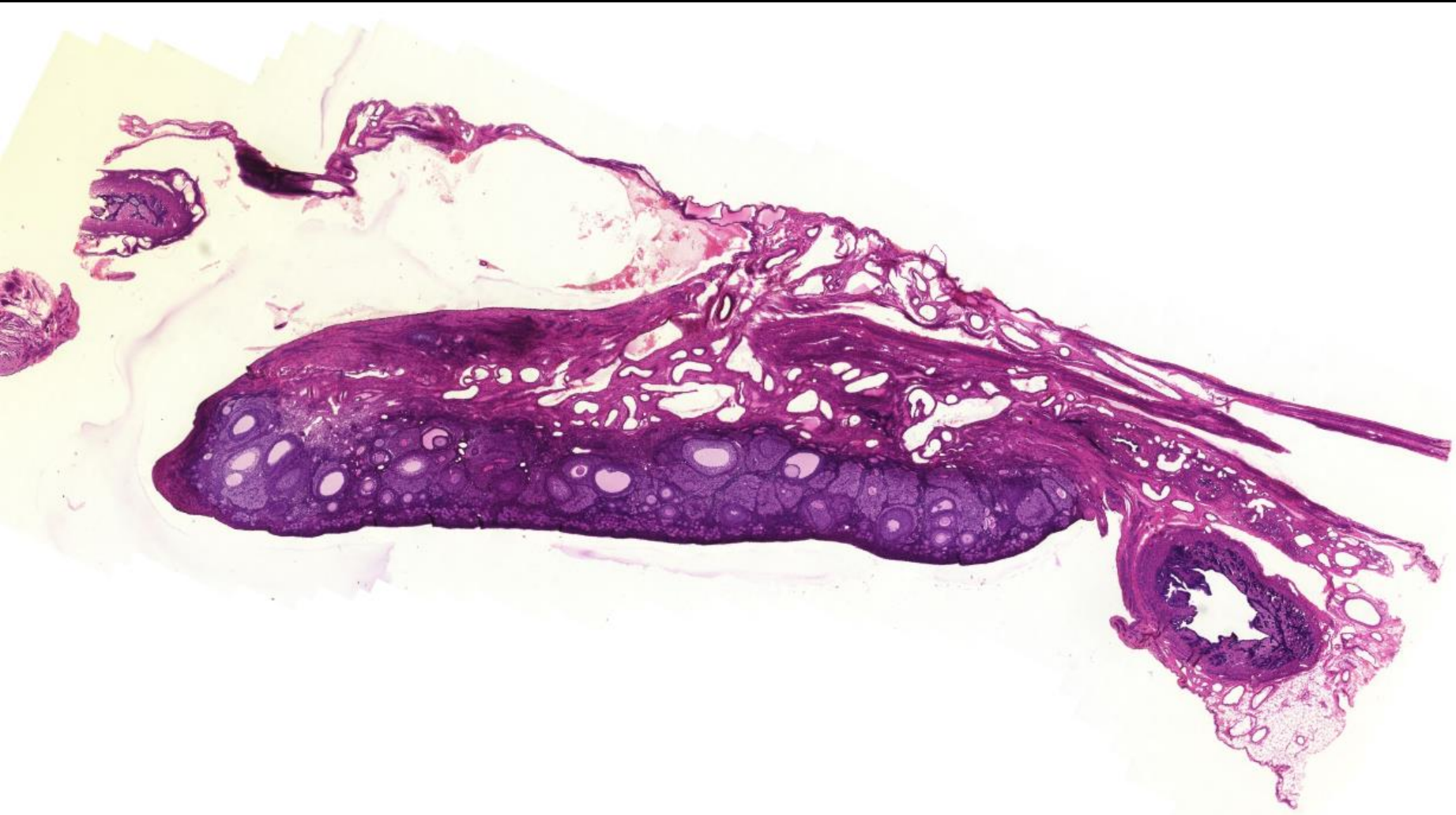


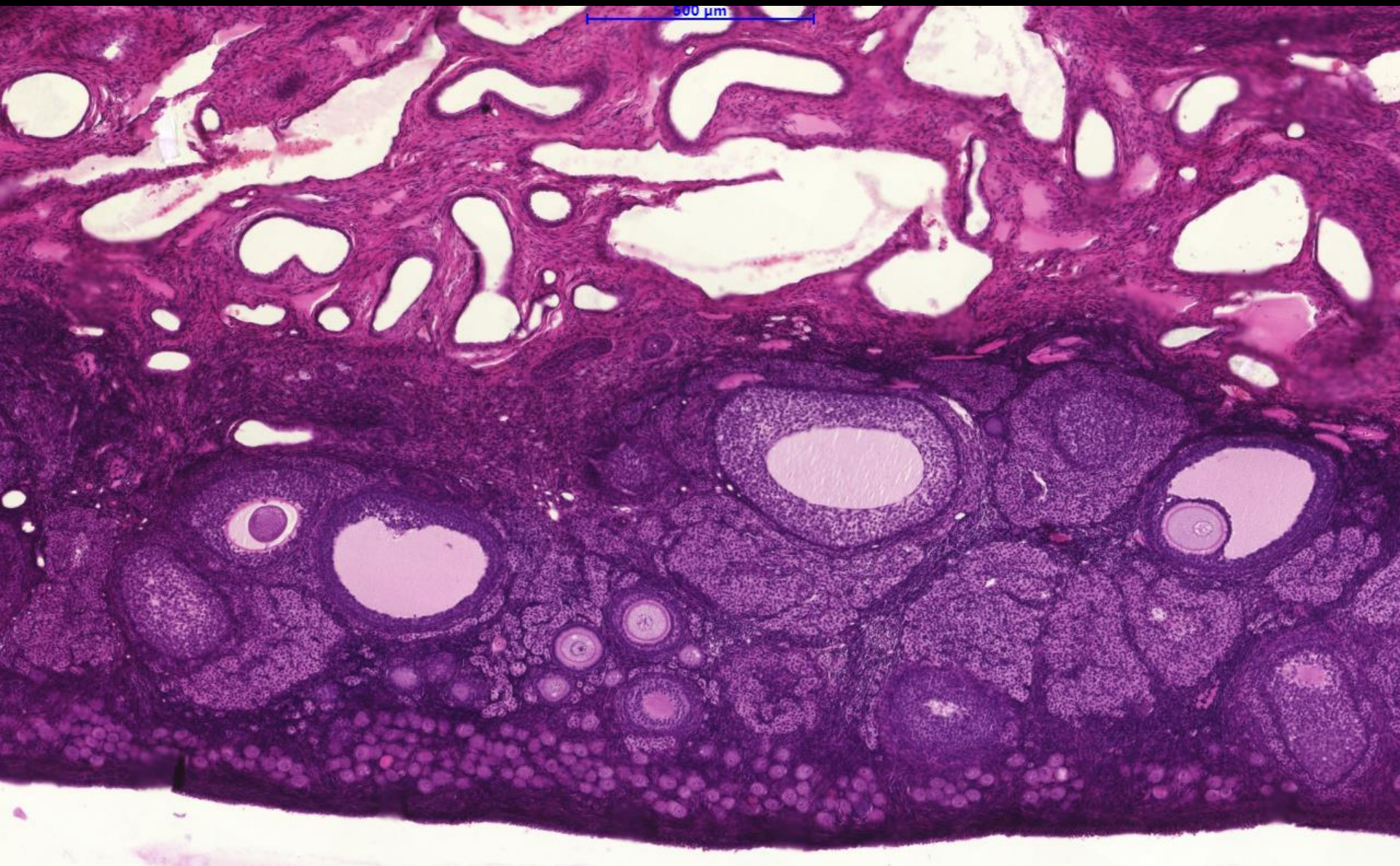
# A petesejt fejlődése (oogenesis)



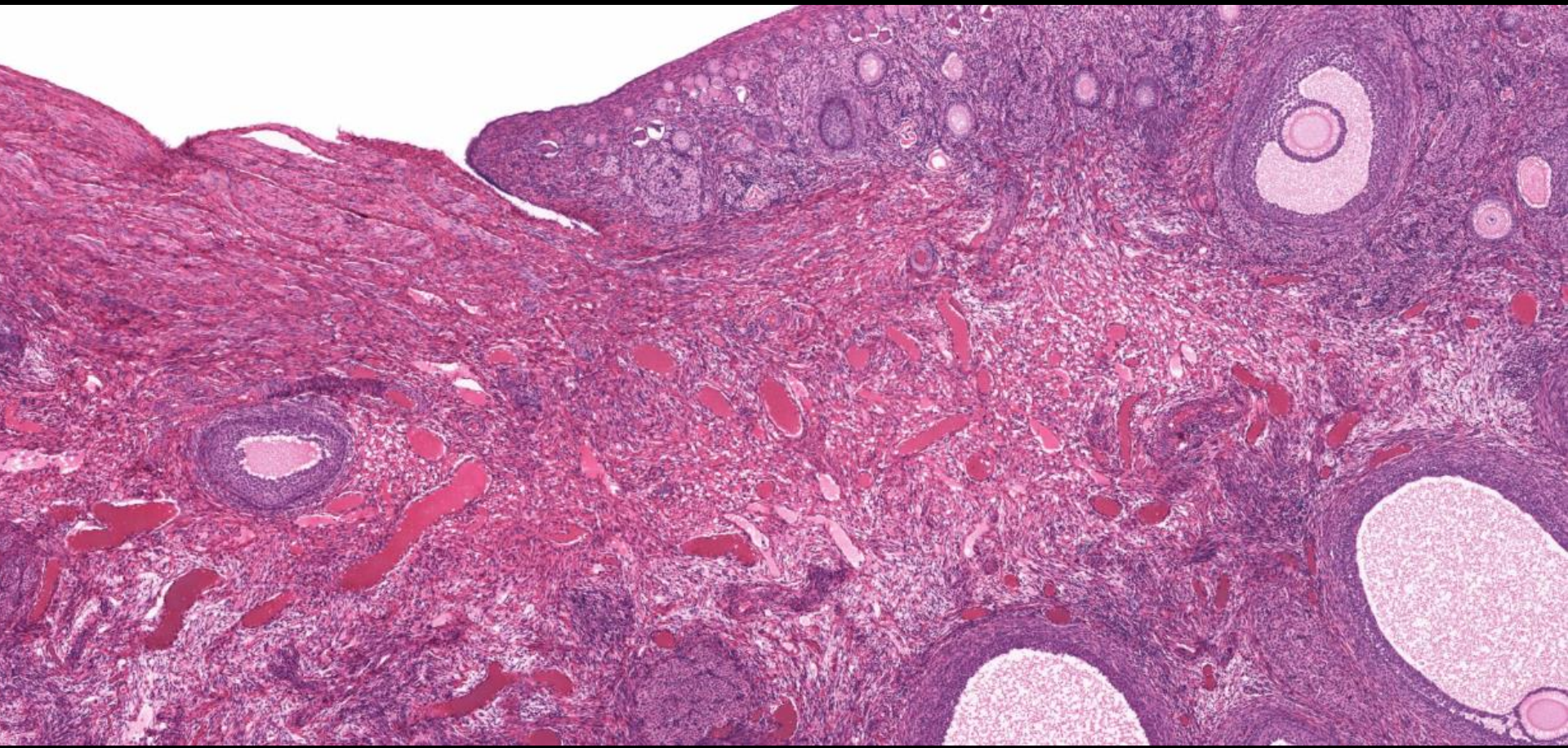


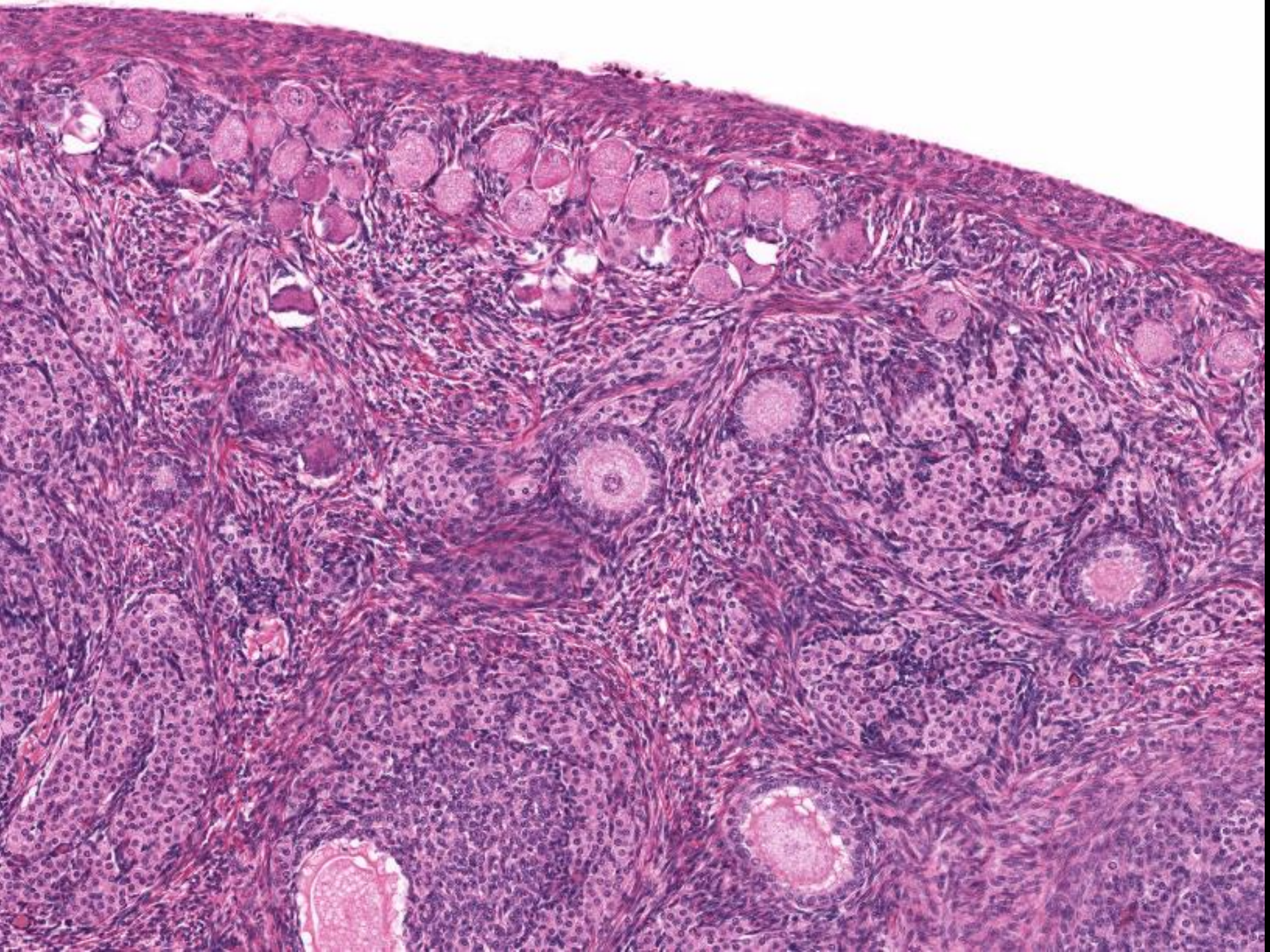
18-2. ábra A: funkcionáló ovarium szerzetének vázlatos rajza, B: a folliculusok fejlődésének szakaszai, C: a petesejt, a zona pellucida és a corona radiata, D: a corpus luteum szerzetete.

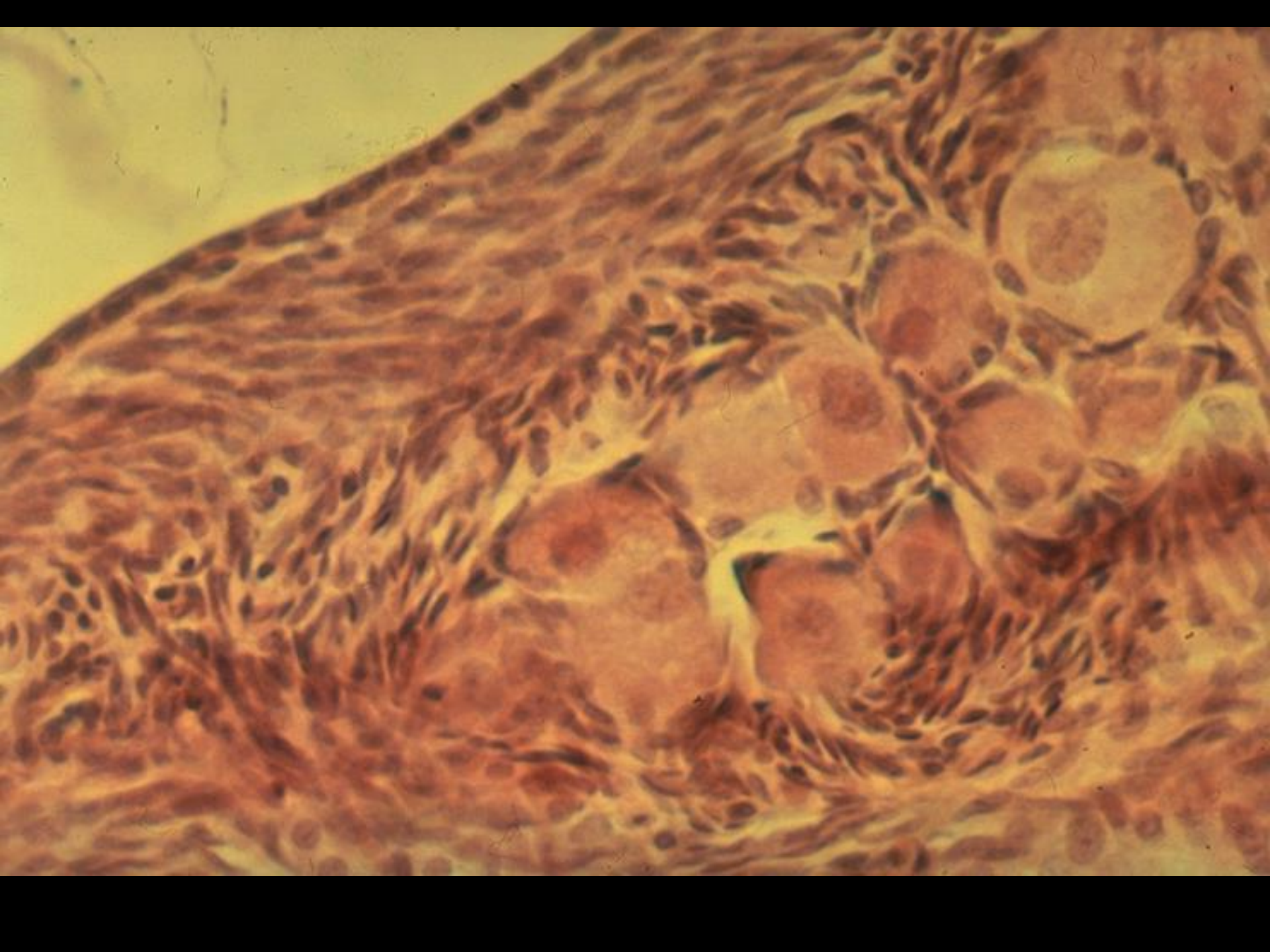


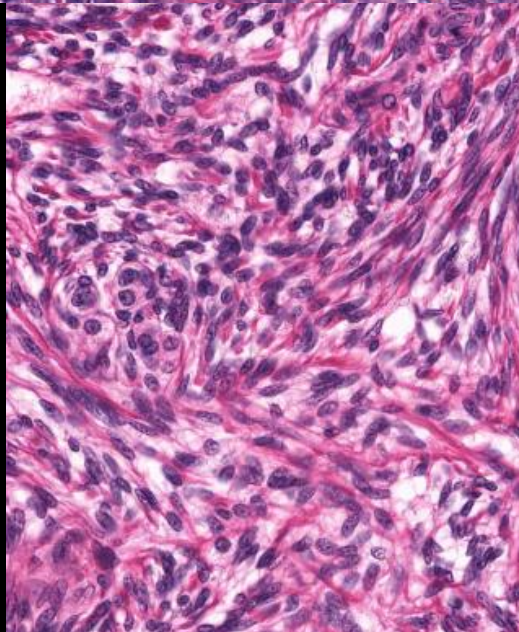
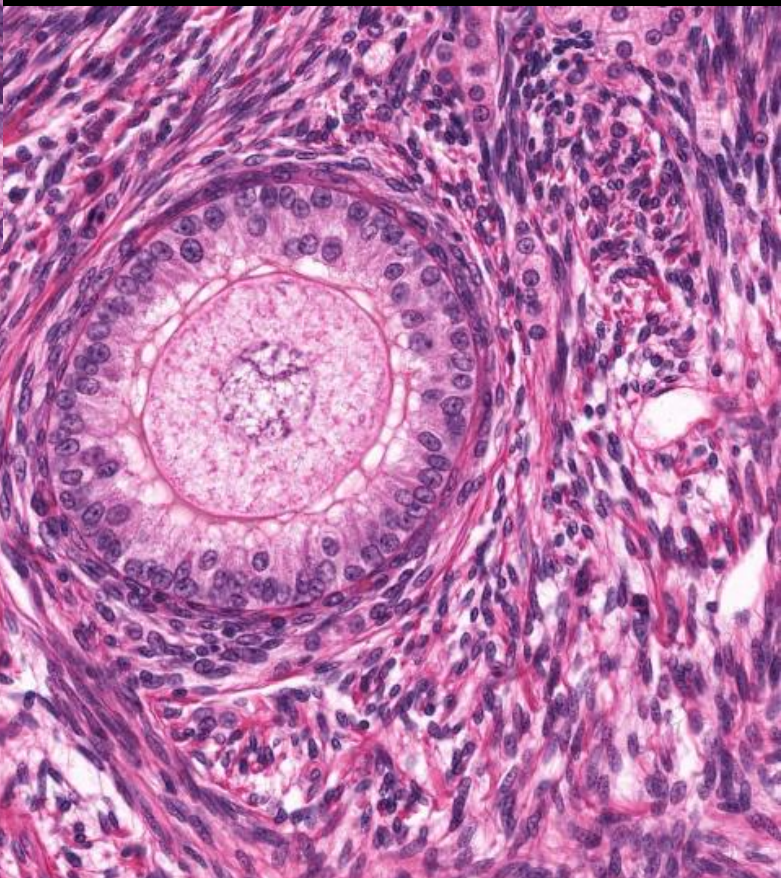
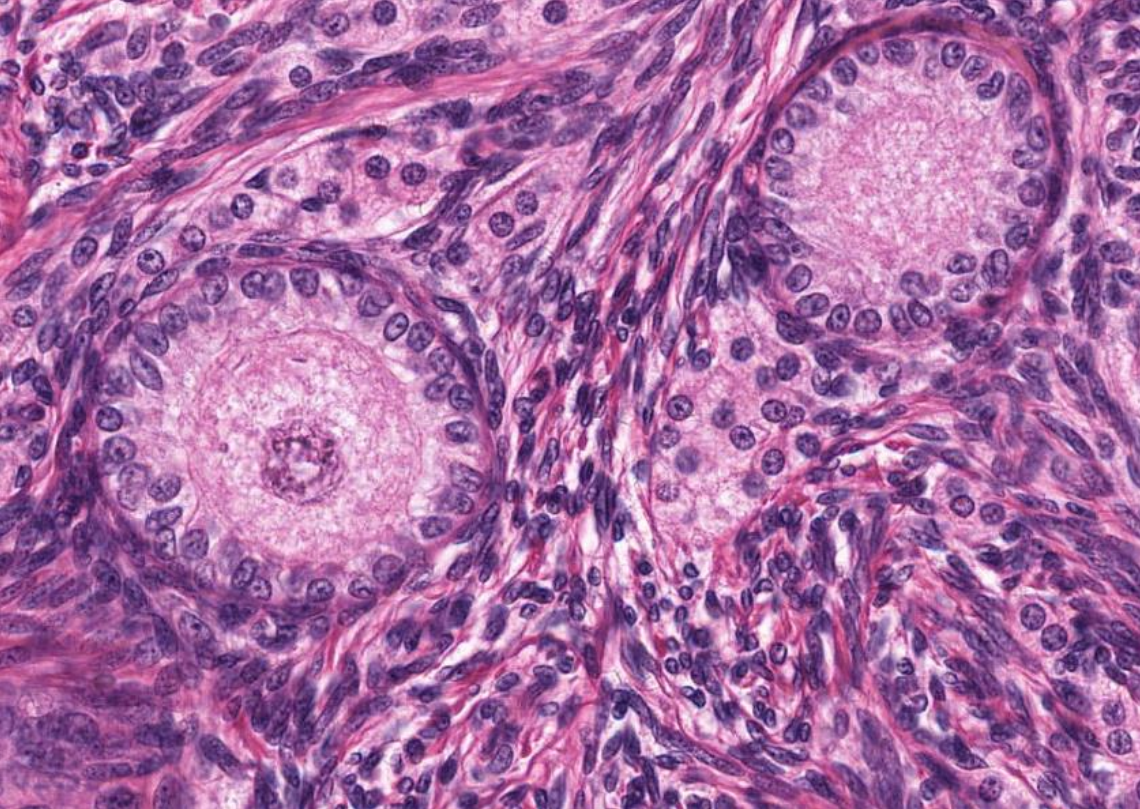


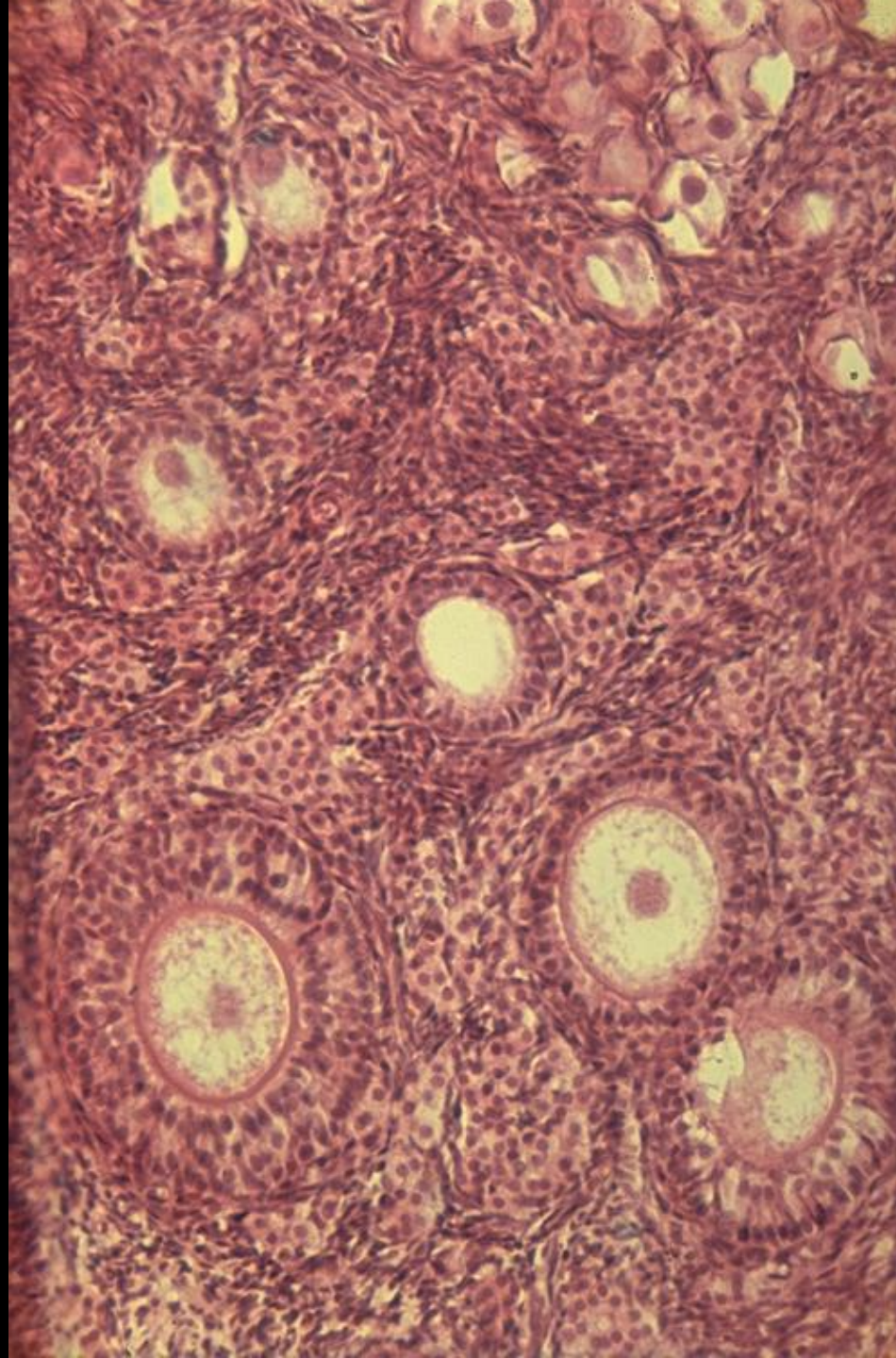








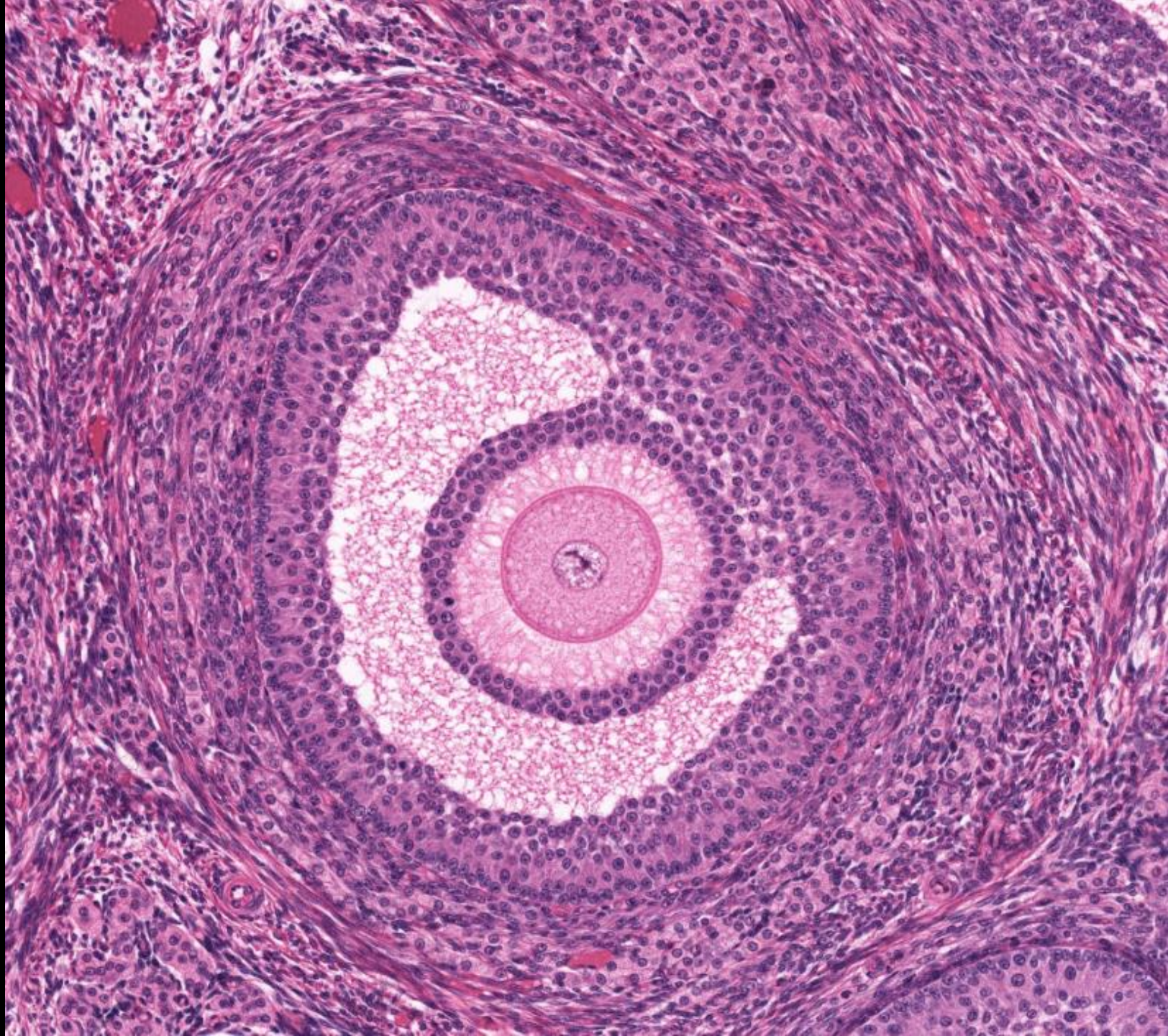


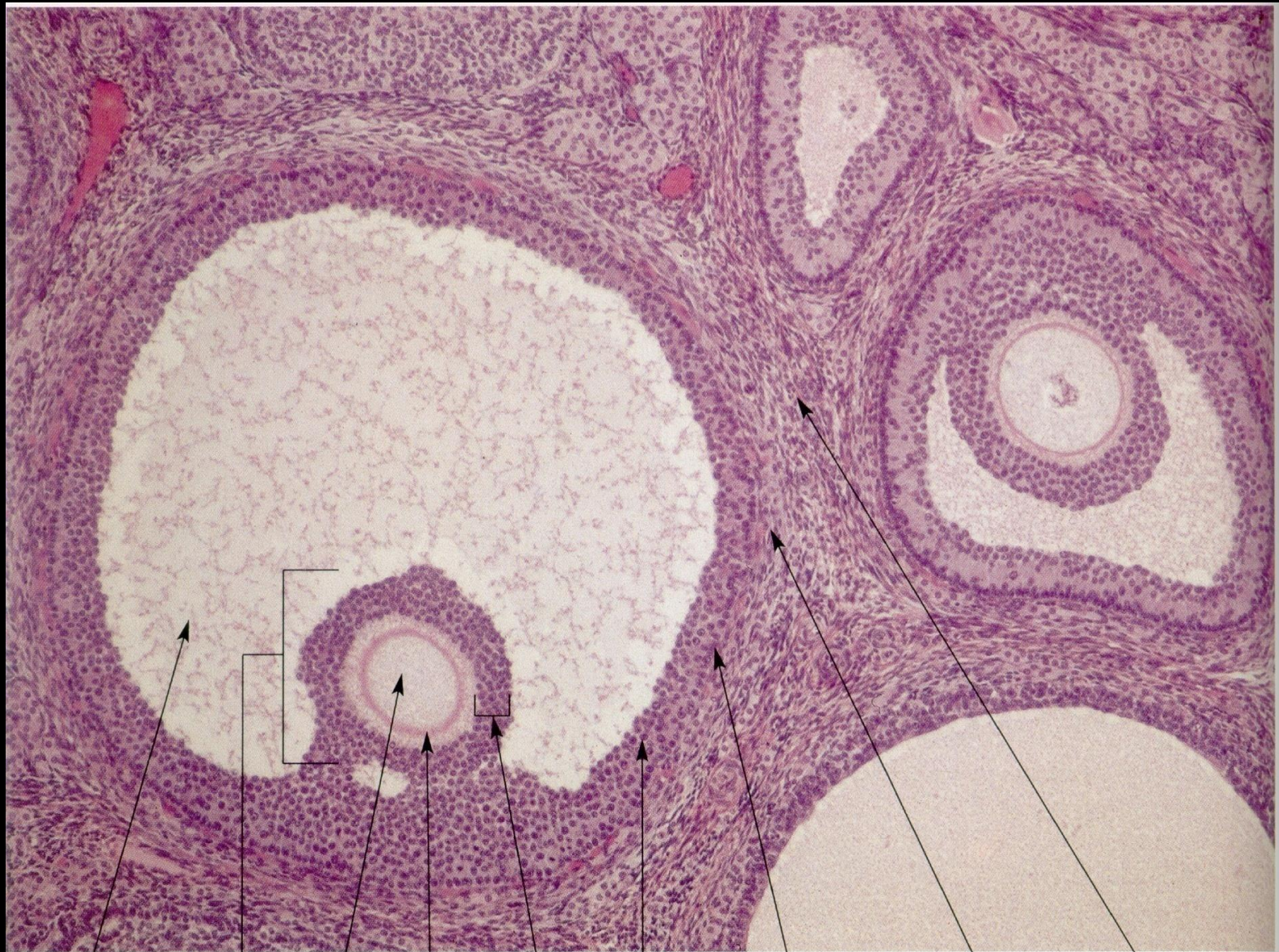




árgatest    primer folliculus    zona pellucida    szekunder folliculus    primer oocyta    theca folliculi    atretizált folliculusok

8-3. ábra. Fejlődő folliculusok az ovarium kéregállományában (HE, 170x).





cavum folliculi

cumulus  
oophorus

oocyta

zona  
pellucida

corona  
radiata

membrana  
granulosa

membrana  
basalis

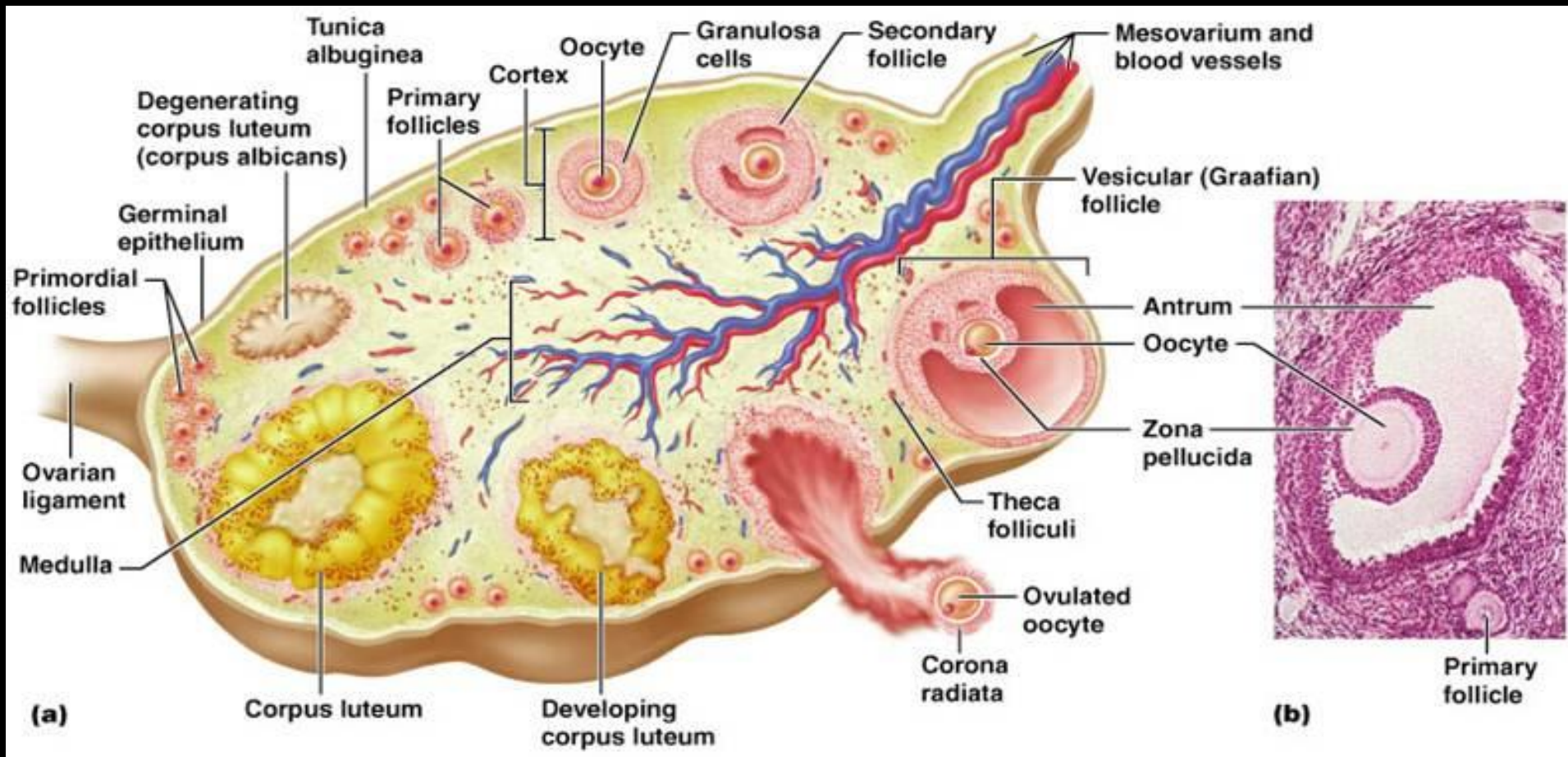
theca folliculi  
interna

theca folliculi  
externa

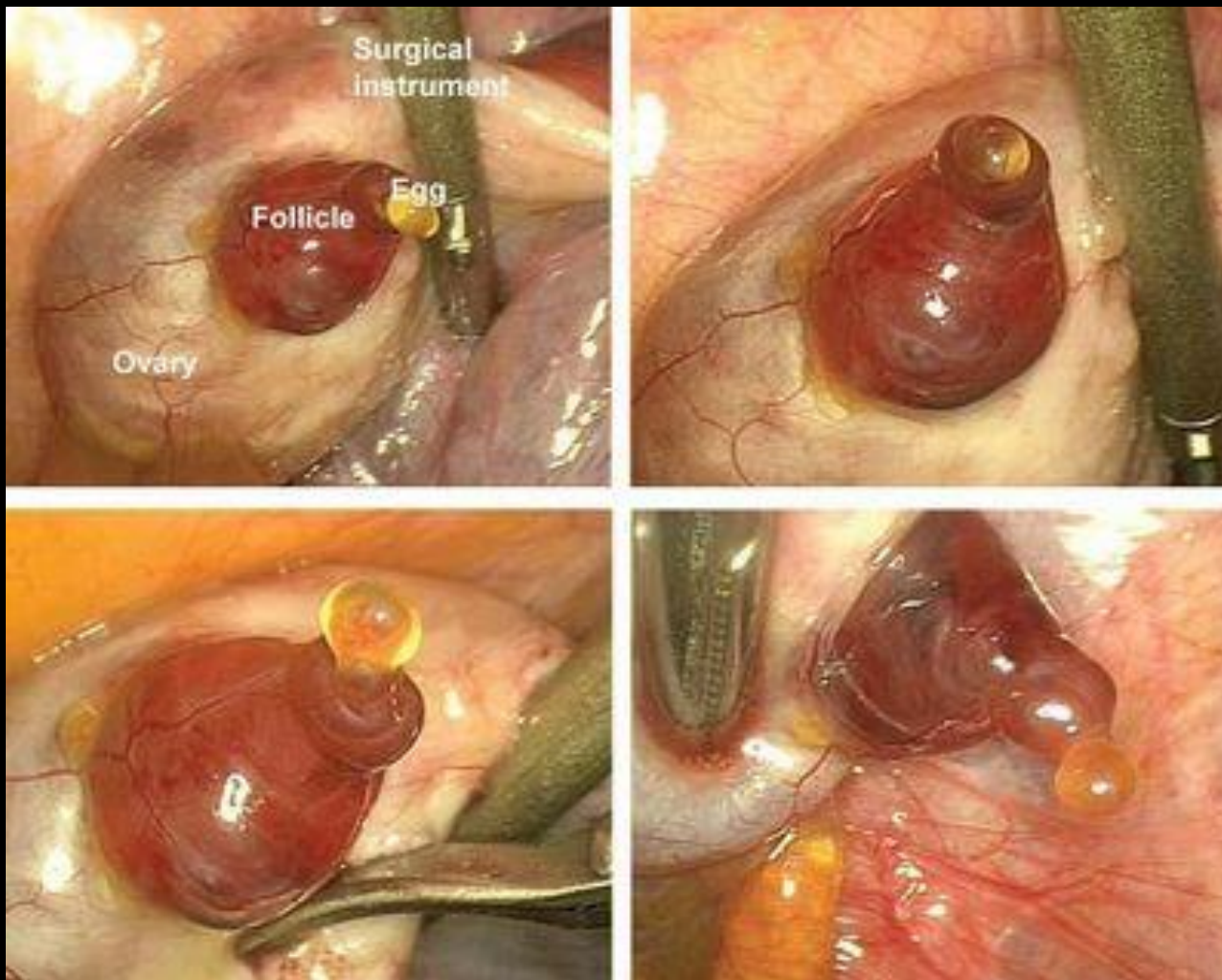
18-6. ábra. Graaf-tüsző (HE, 100x).



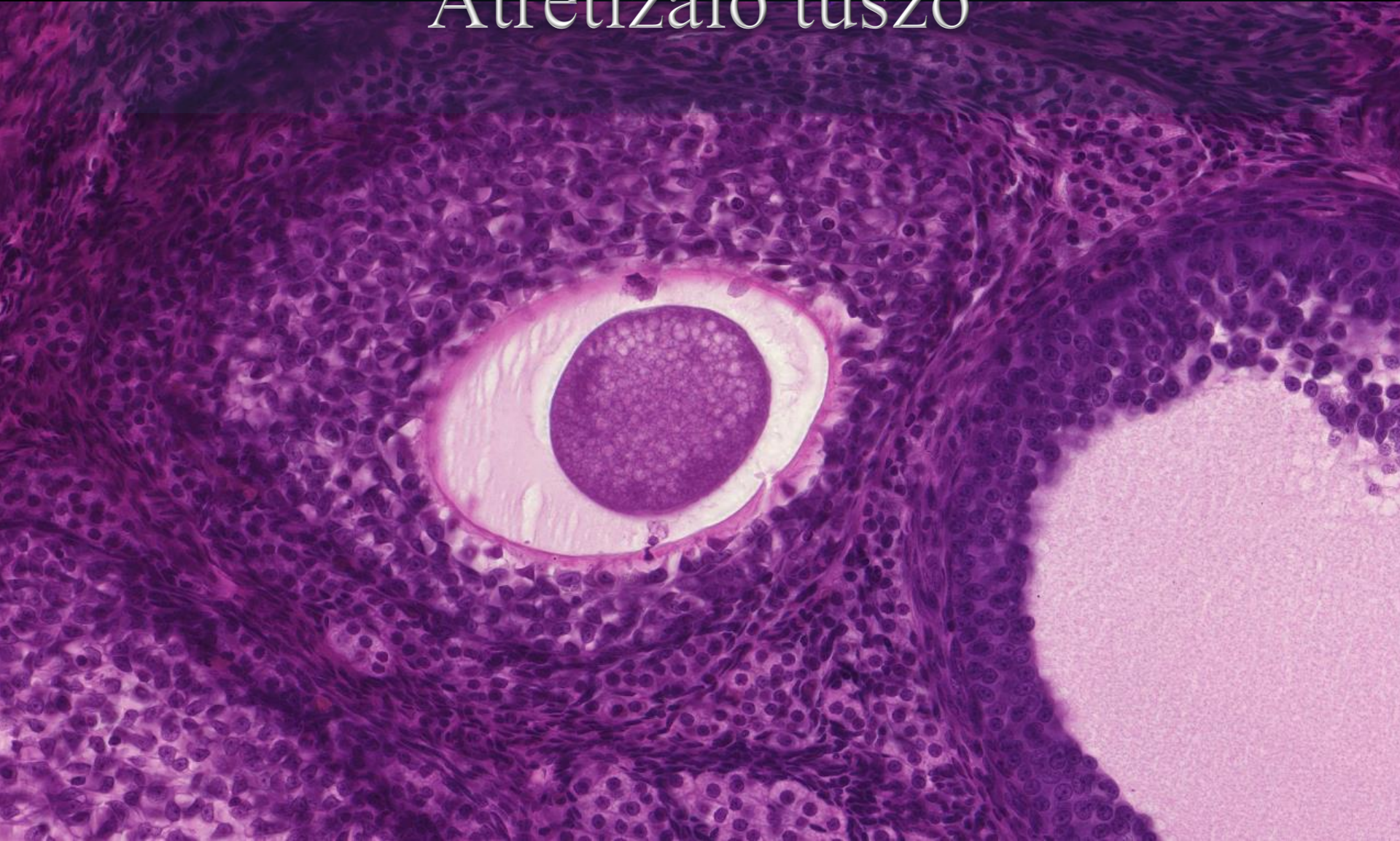




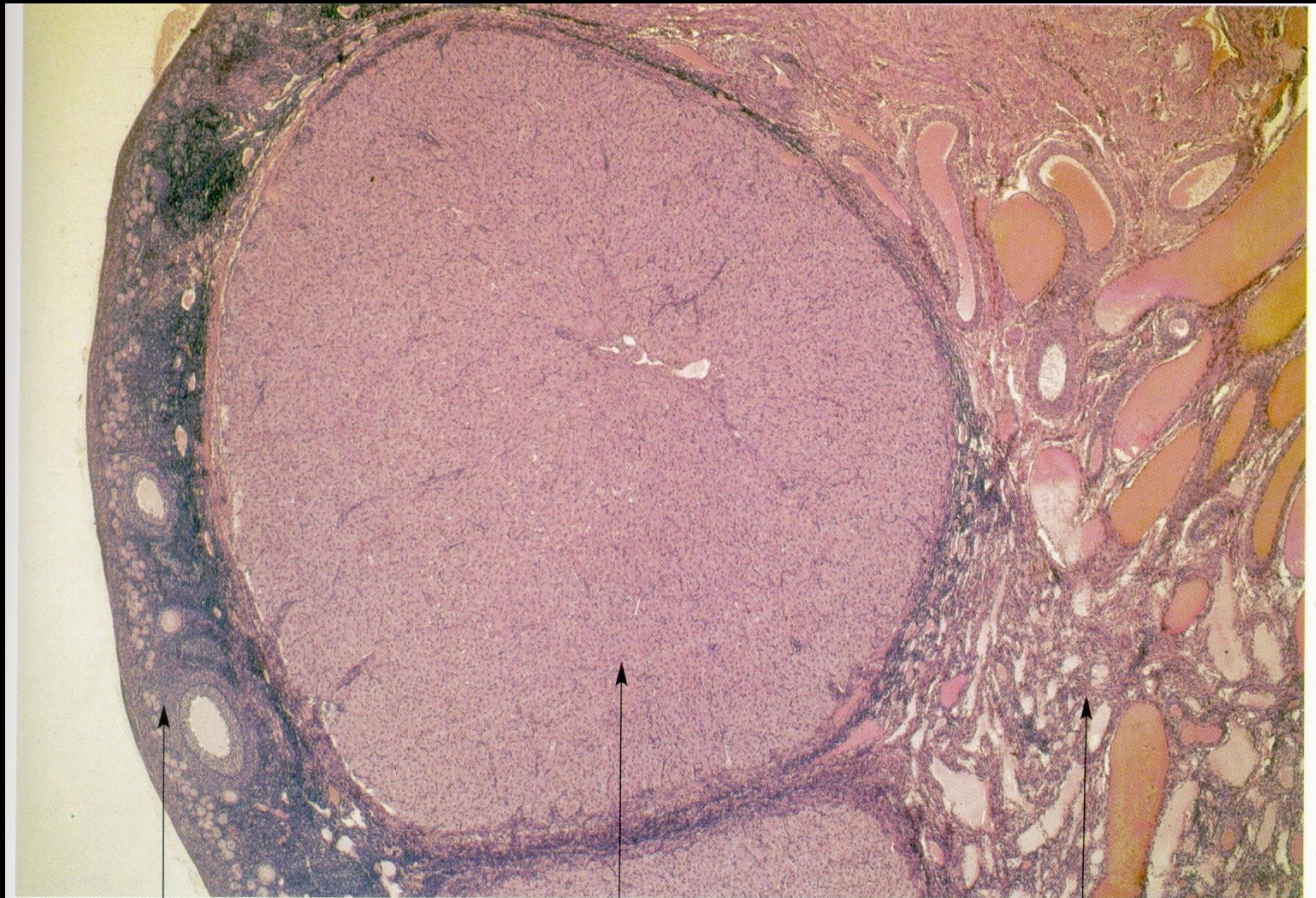
# Ovuláció



# Atretizáló tüsző



# Corpus luteum (sárga test)

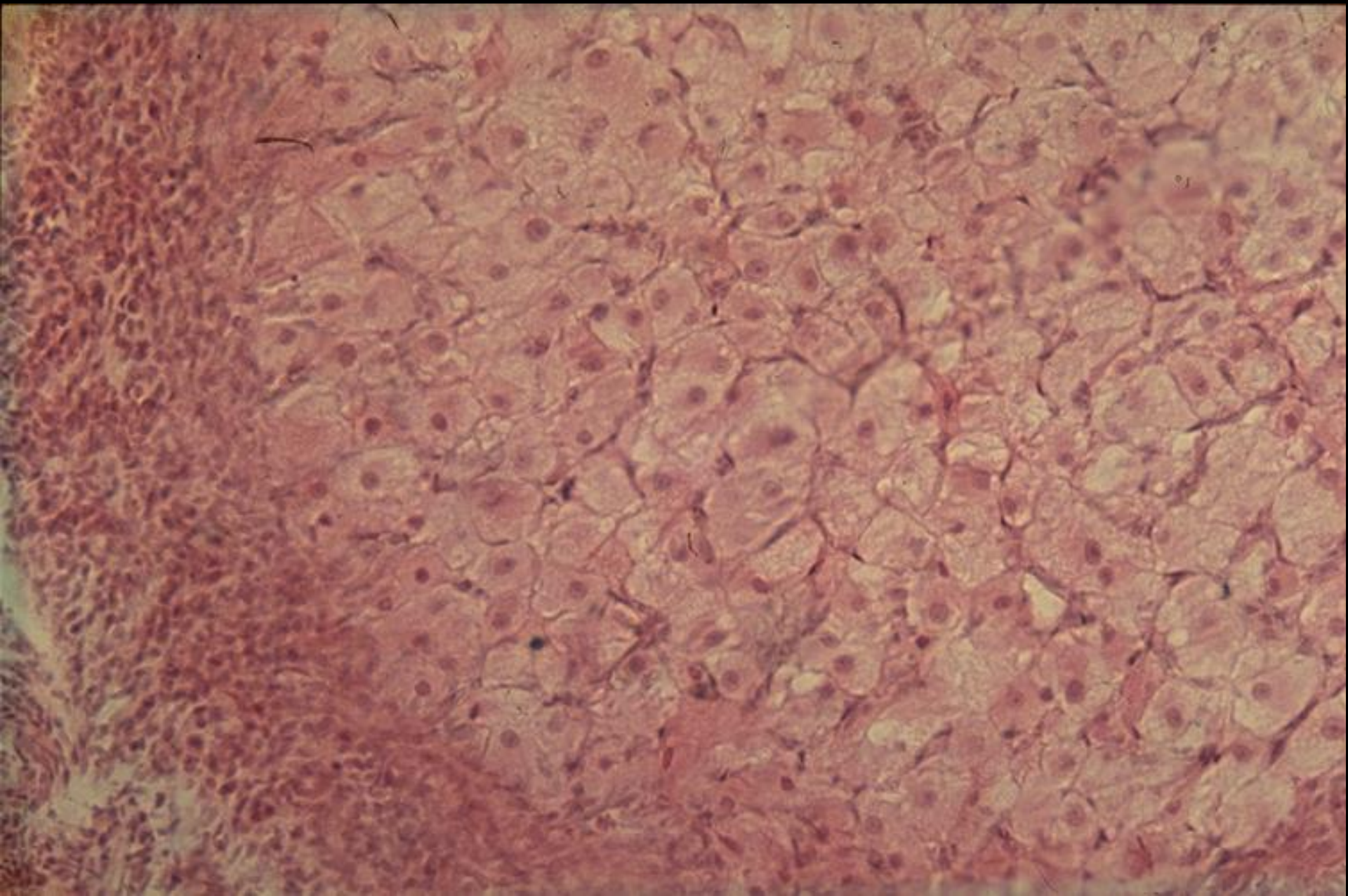


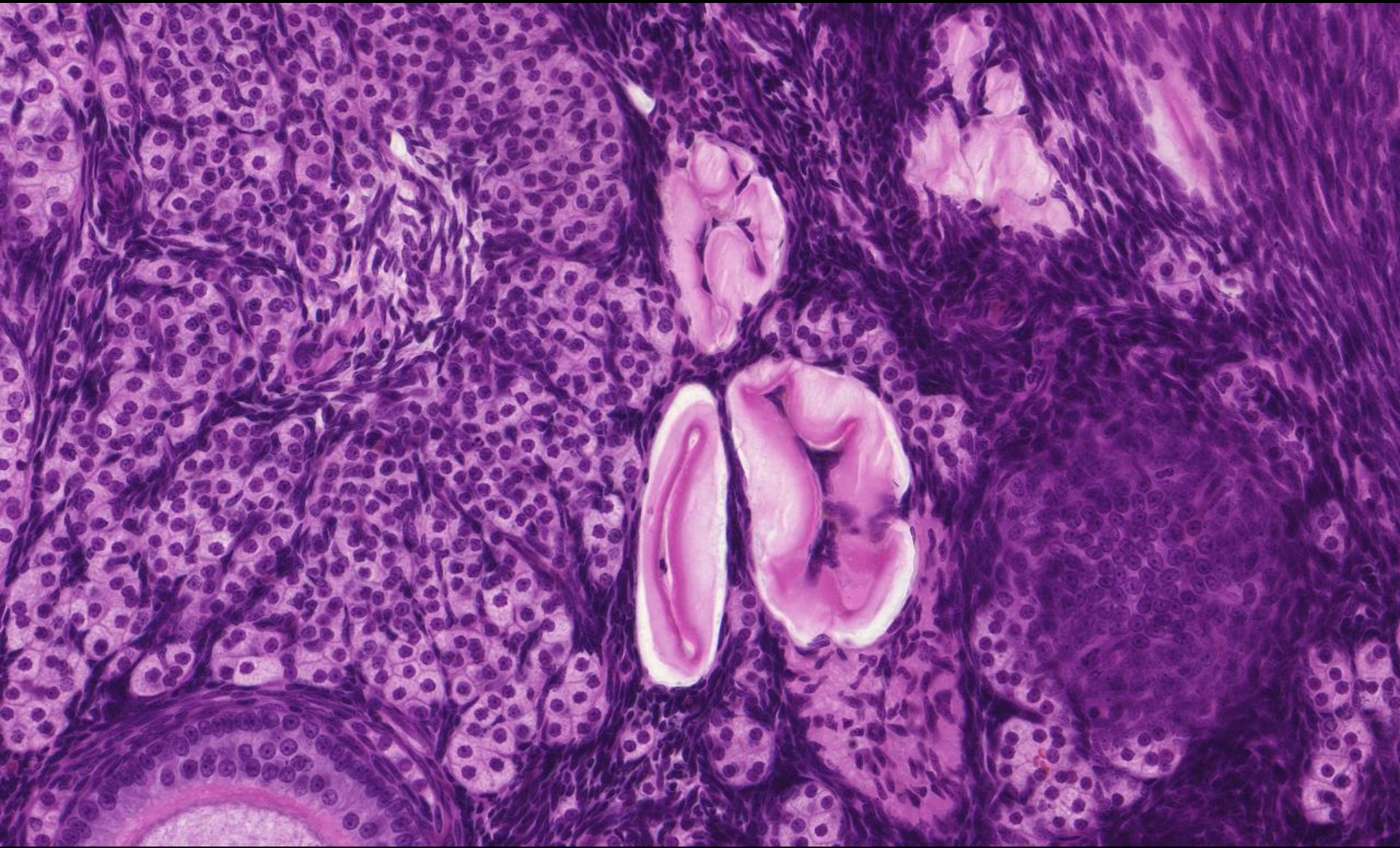
cortex ovarii

corpus luteum

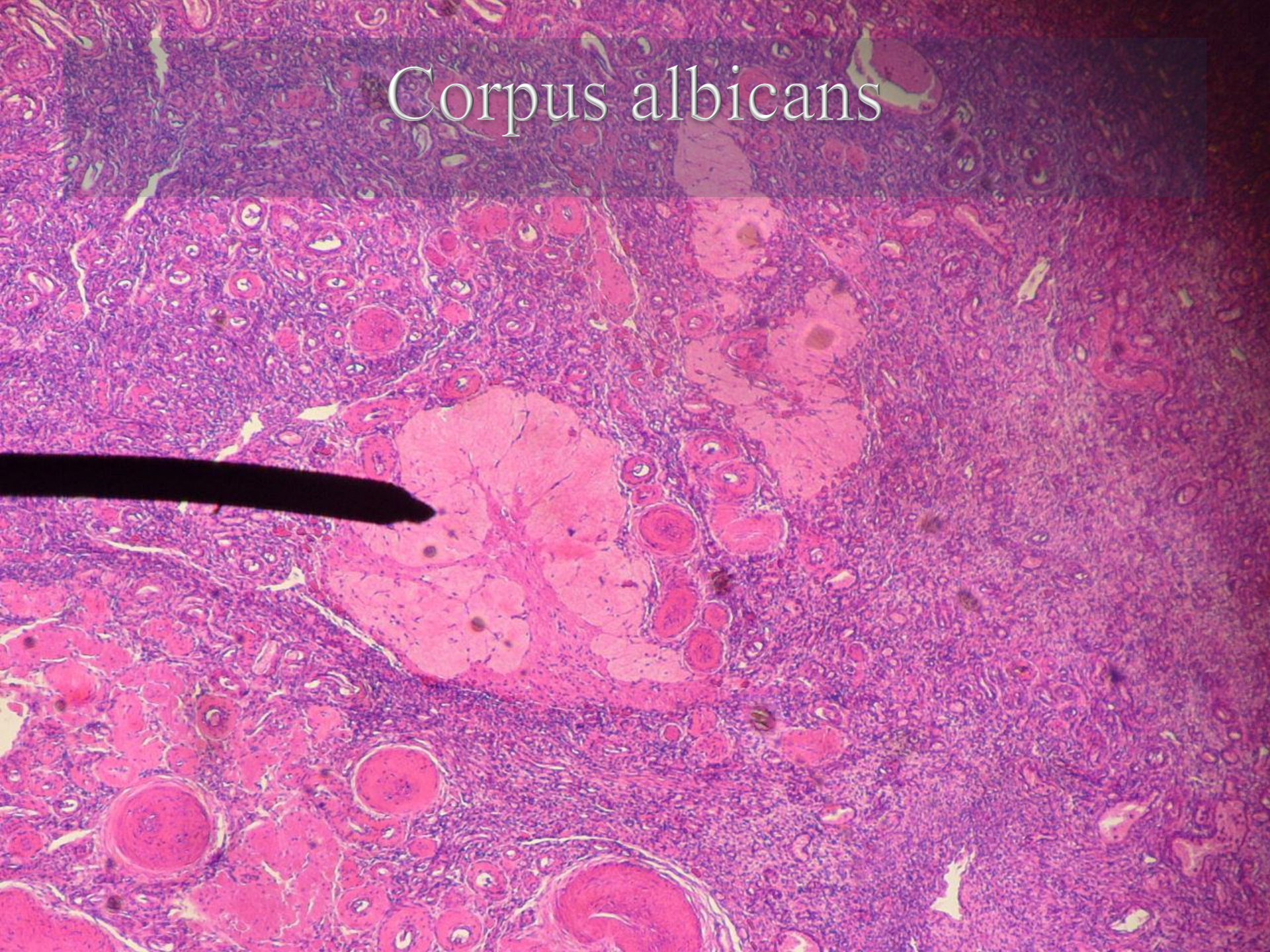
medulla ovarii

18-11. ábra. Corpus luteum átnézeti képe (HE, 31x).



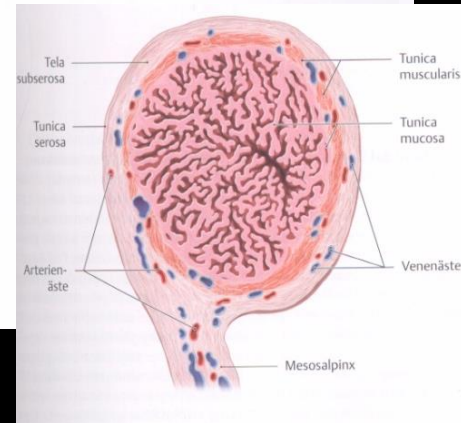
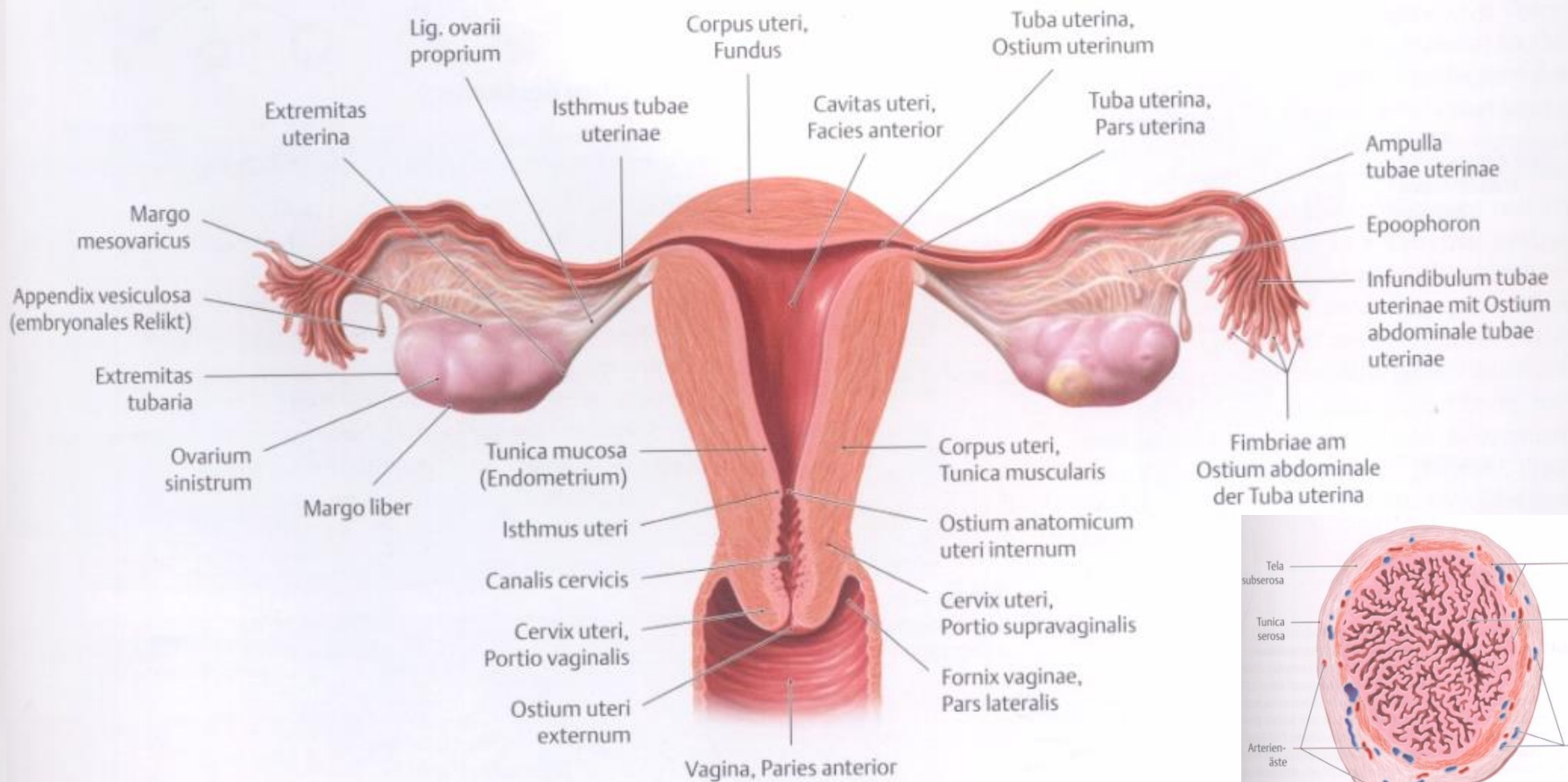


# Corpus albicans





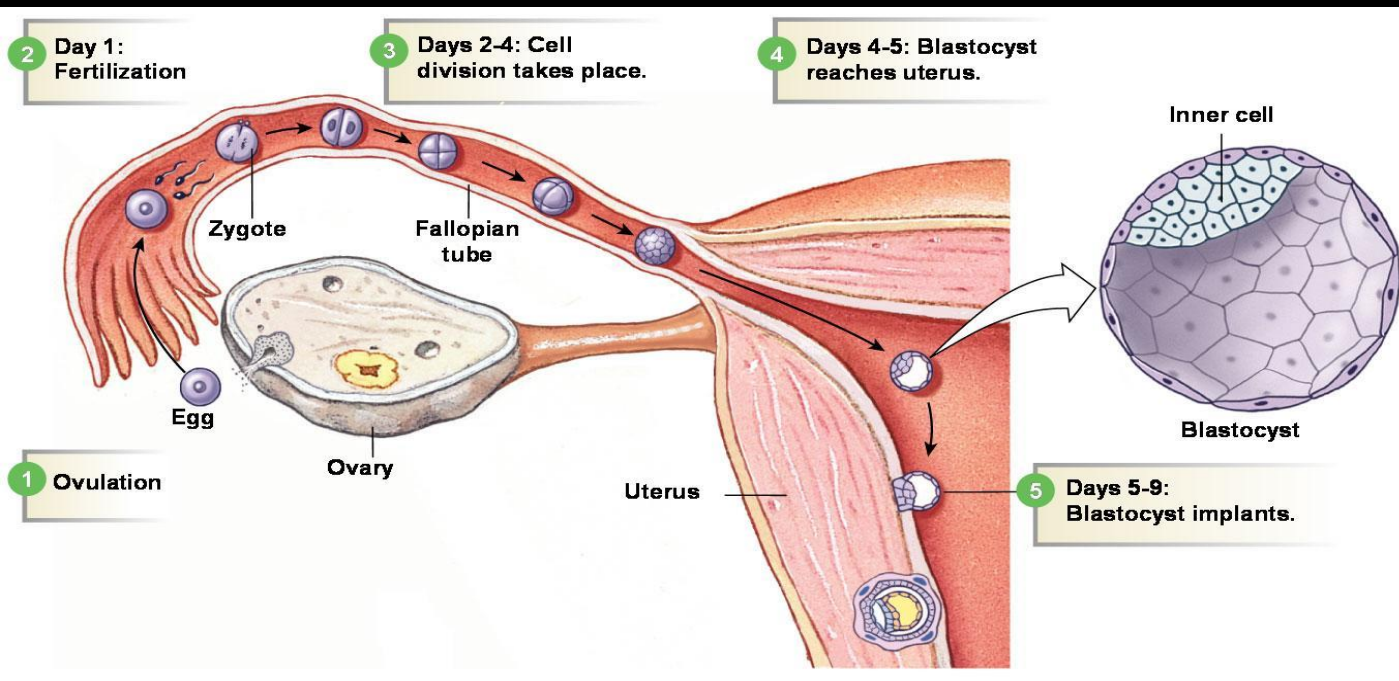
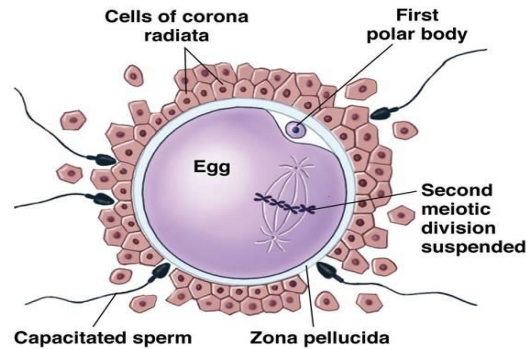
# Petevezeték (tuba uterina)



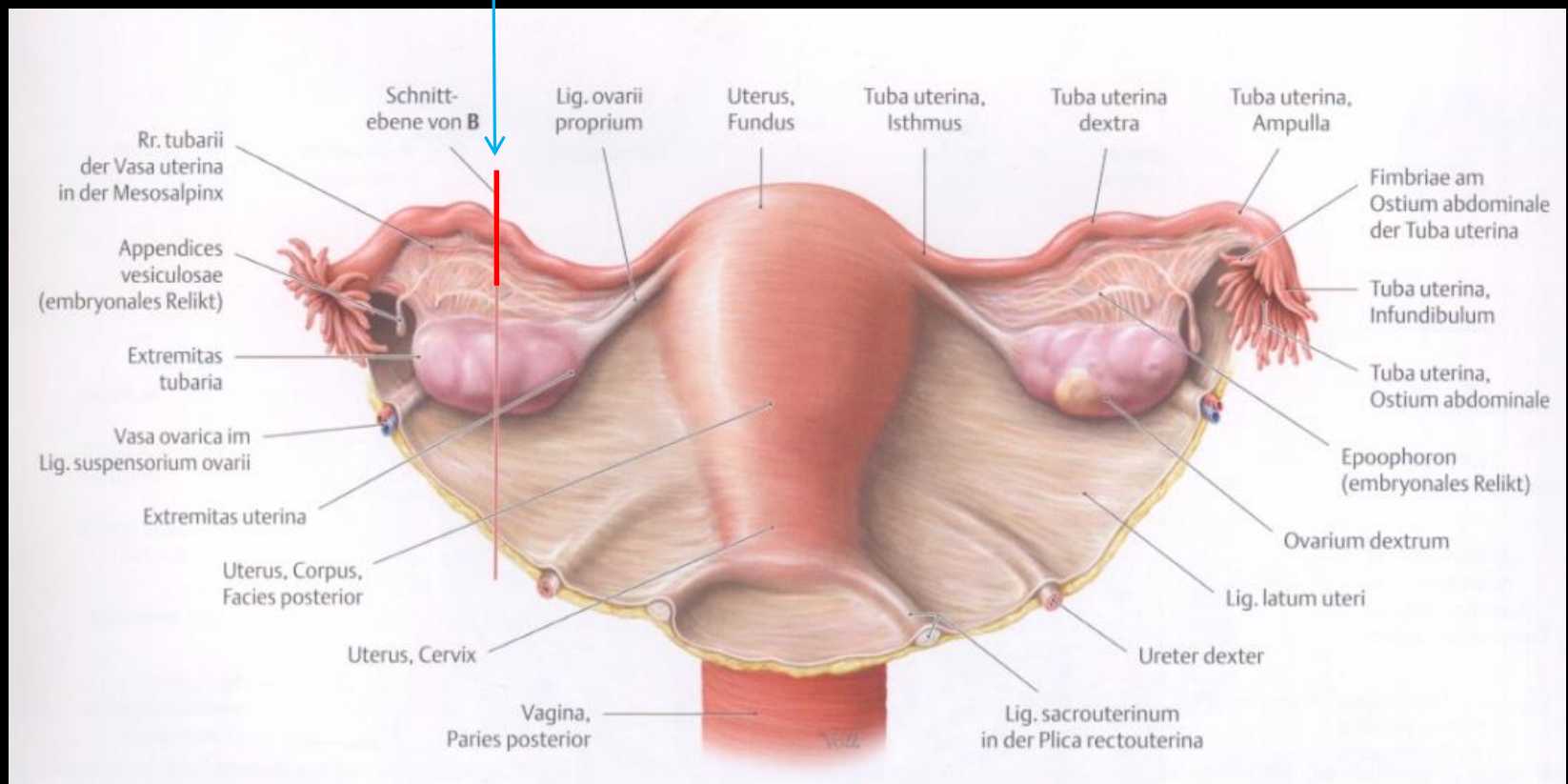
# Megtermékenyítés

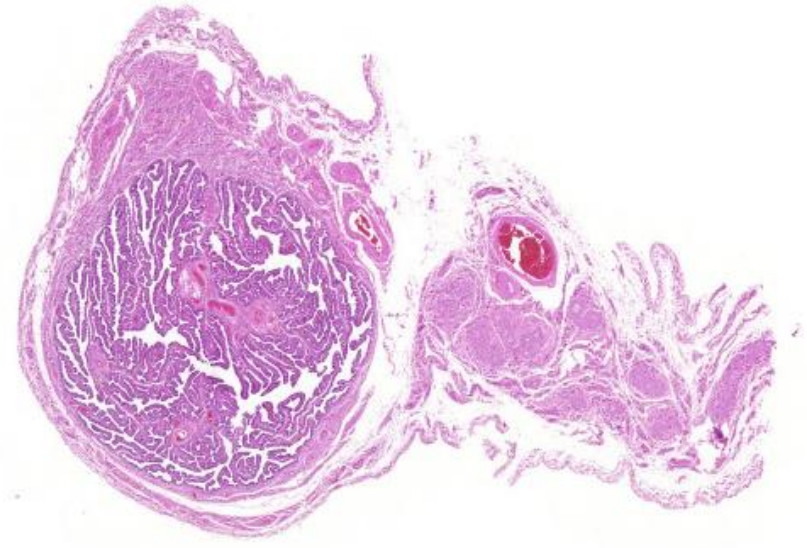


(b) Capacitated sperm release enzymes from their acrosomes in order to penetrate the cells and zona pellucida surrounding the egg.

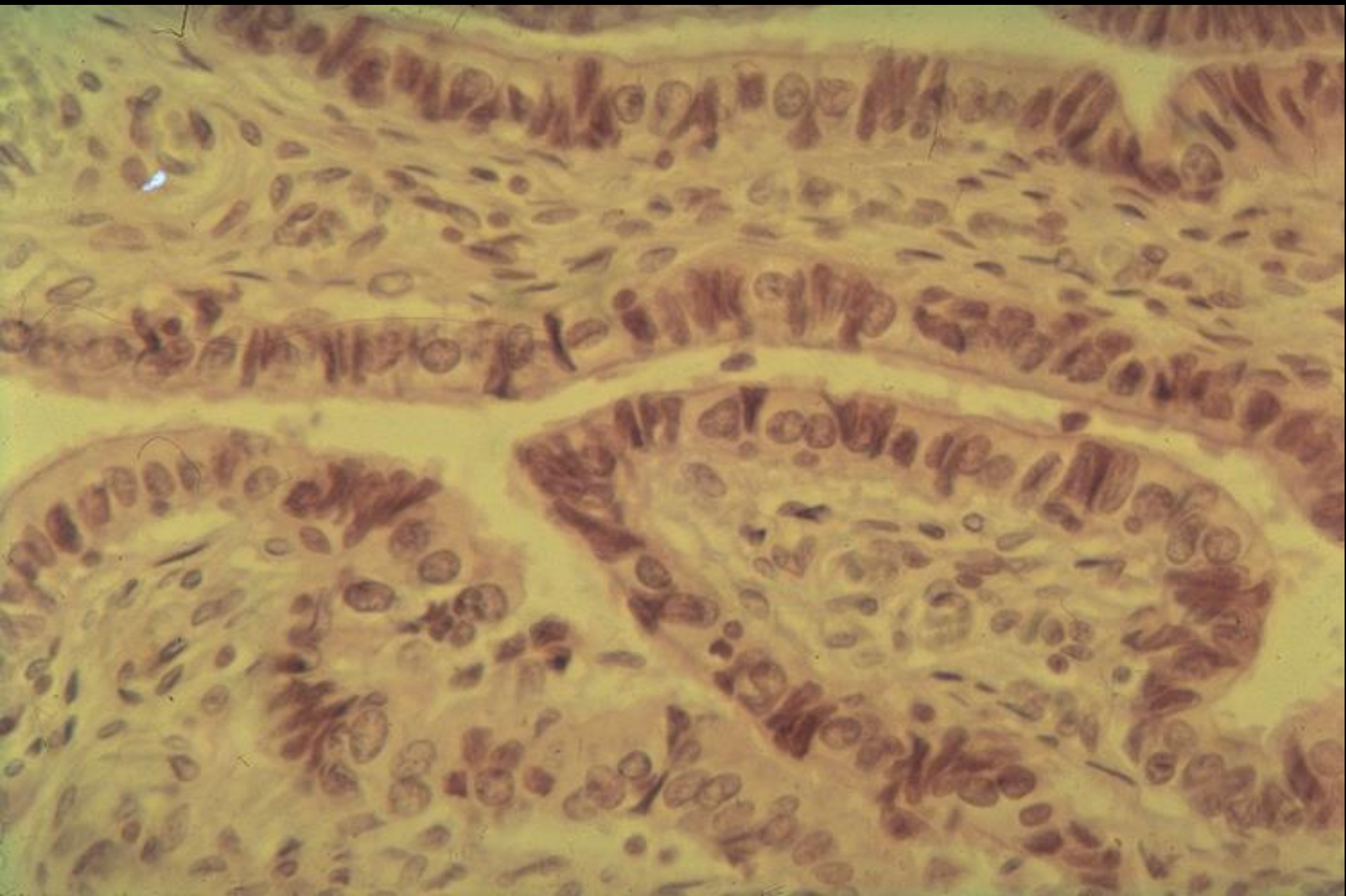


# Tubalis ligatio (a tuba átvágása, lekötése - női sterilizáció)

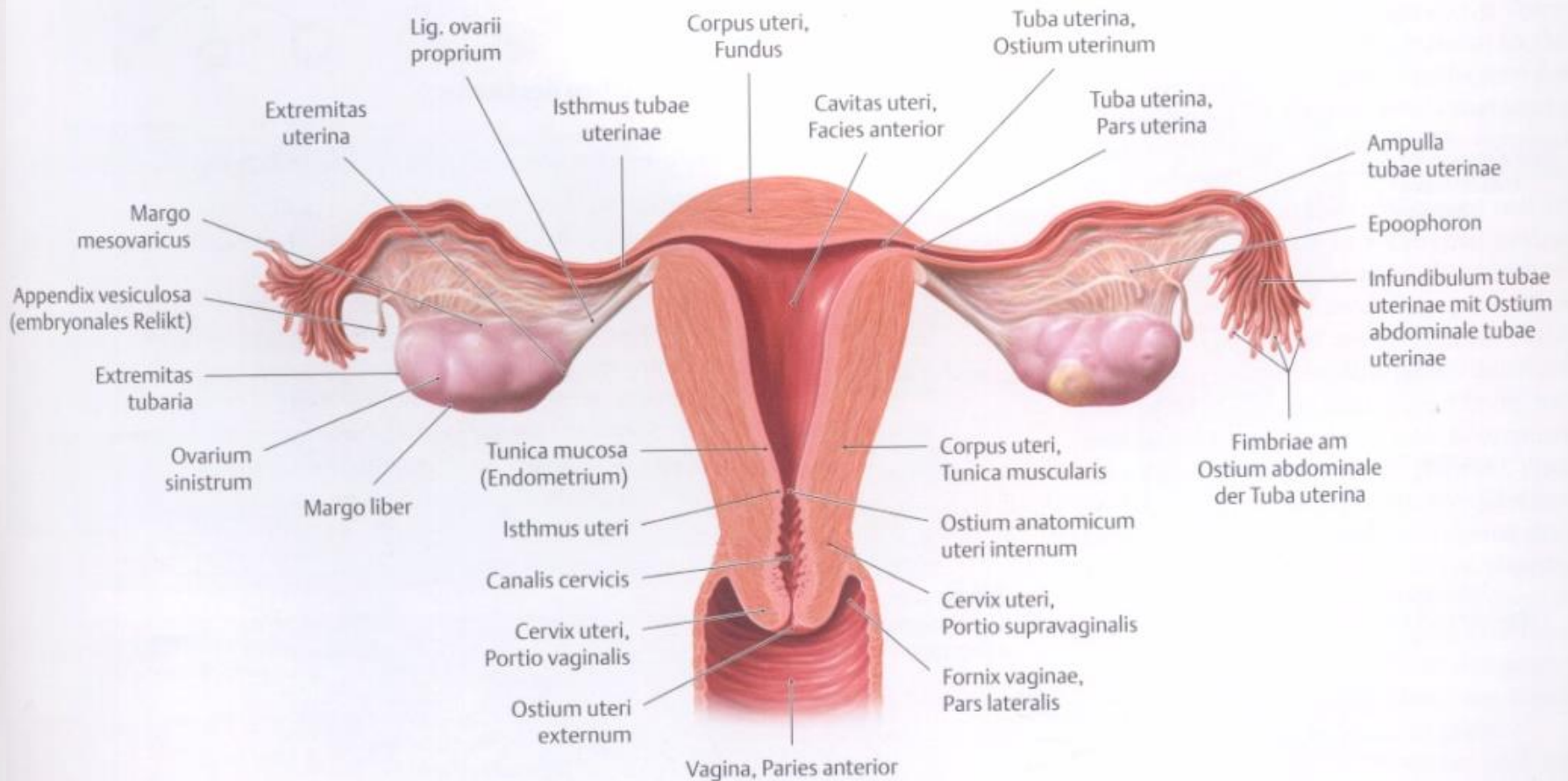


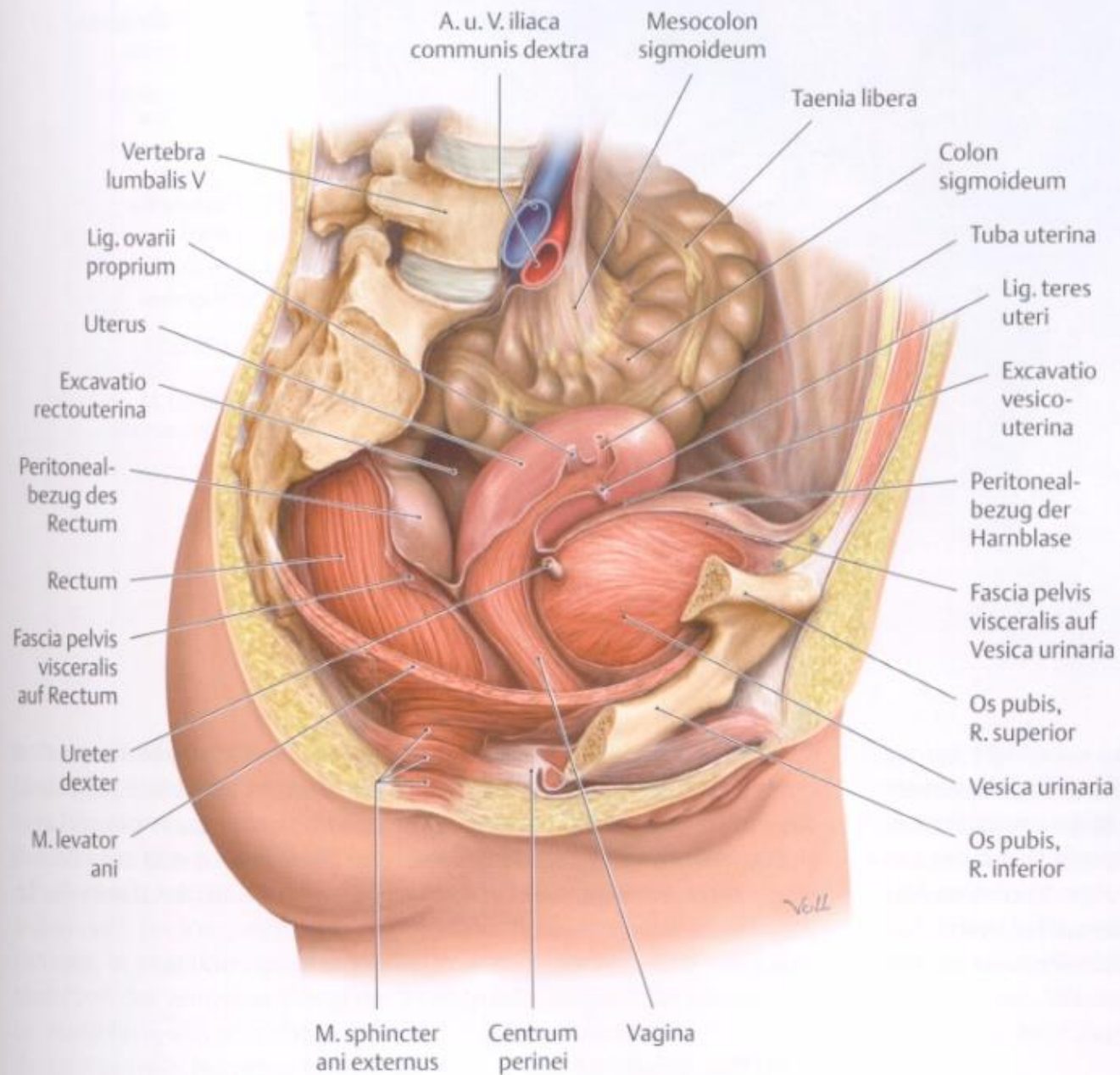




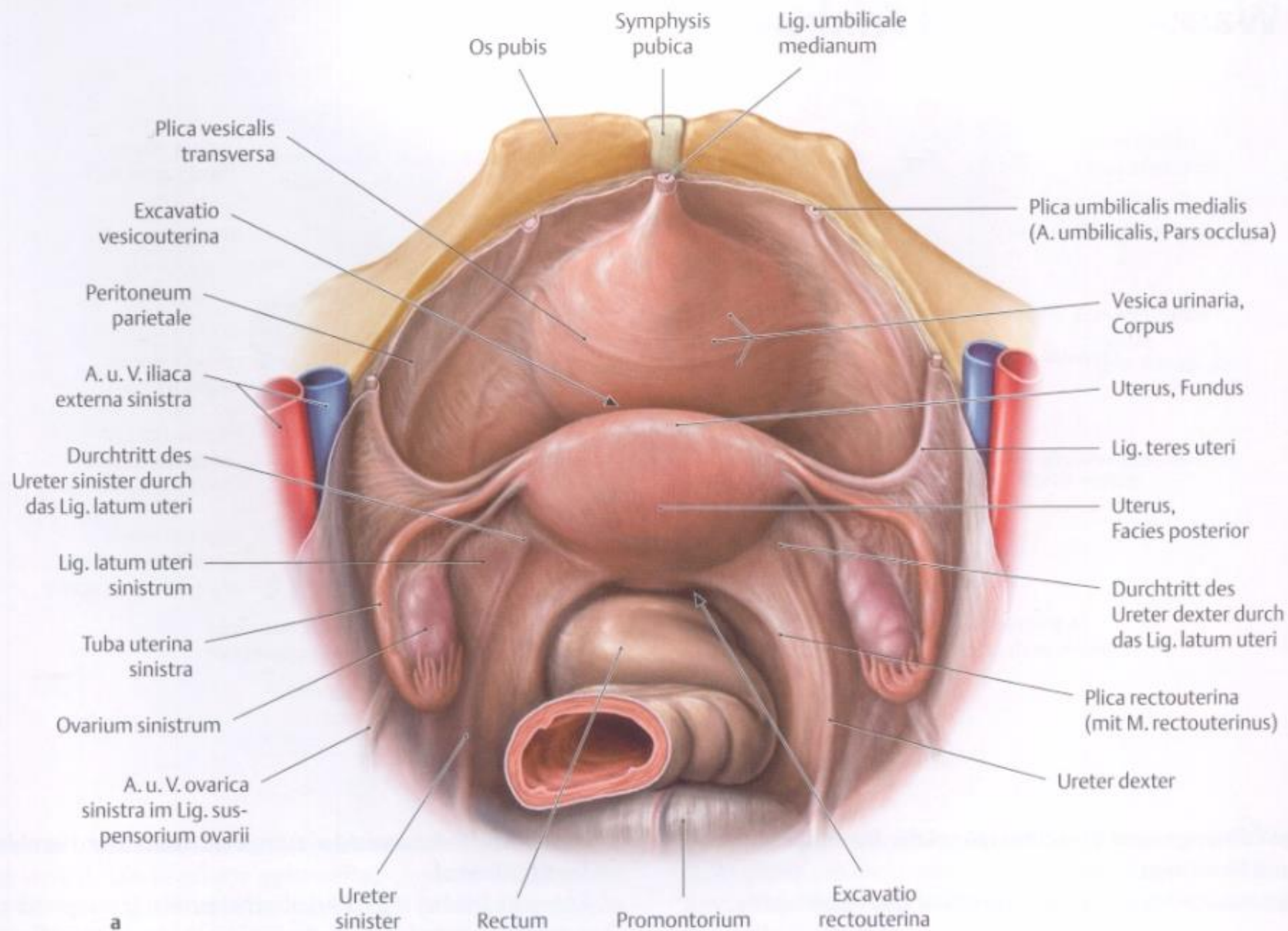


# Méh (uterus)

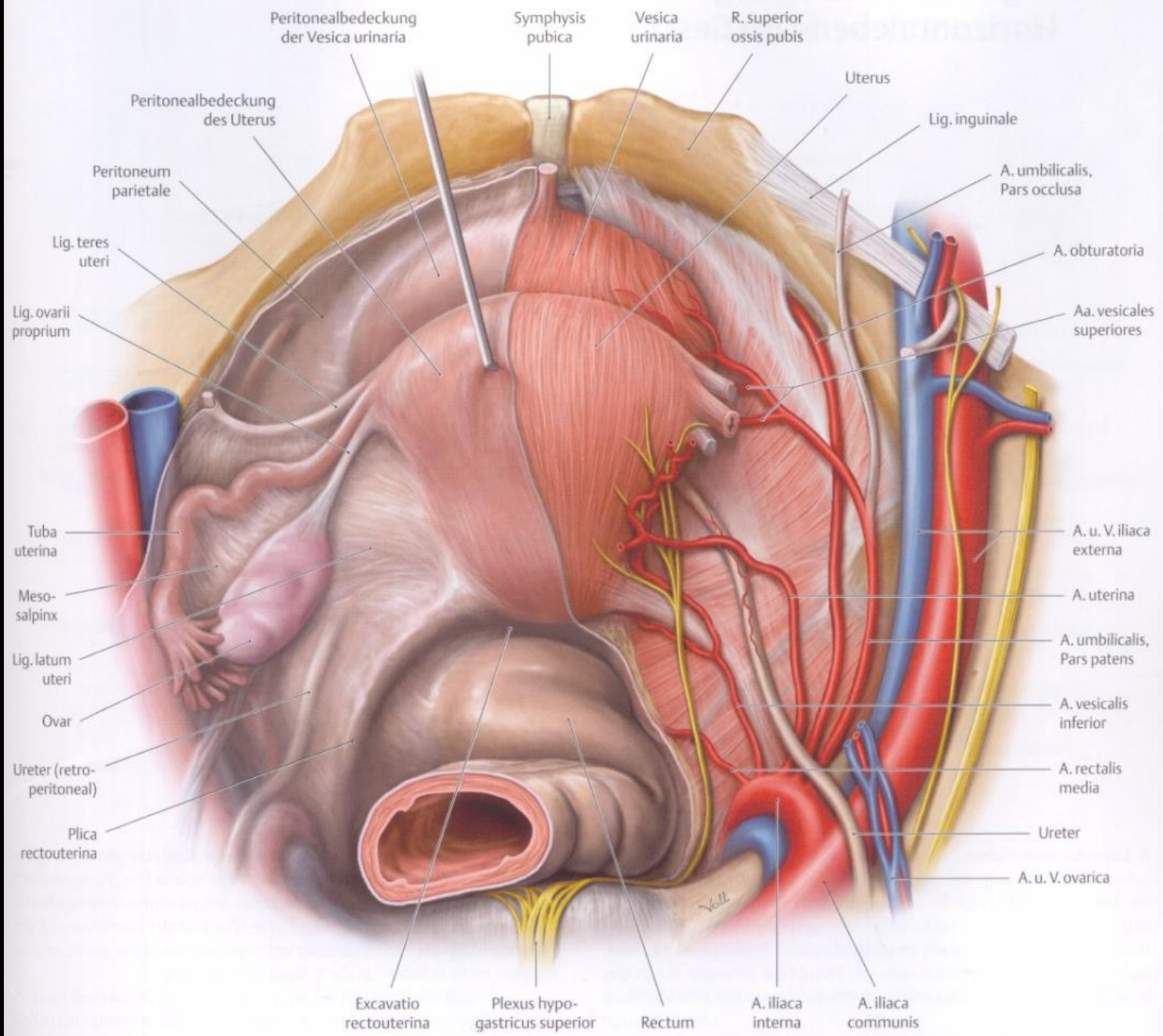








a

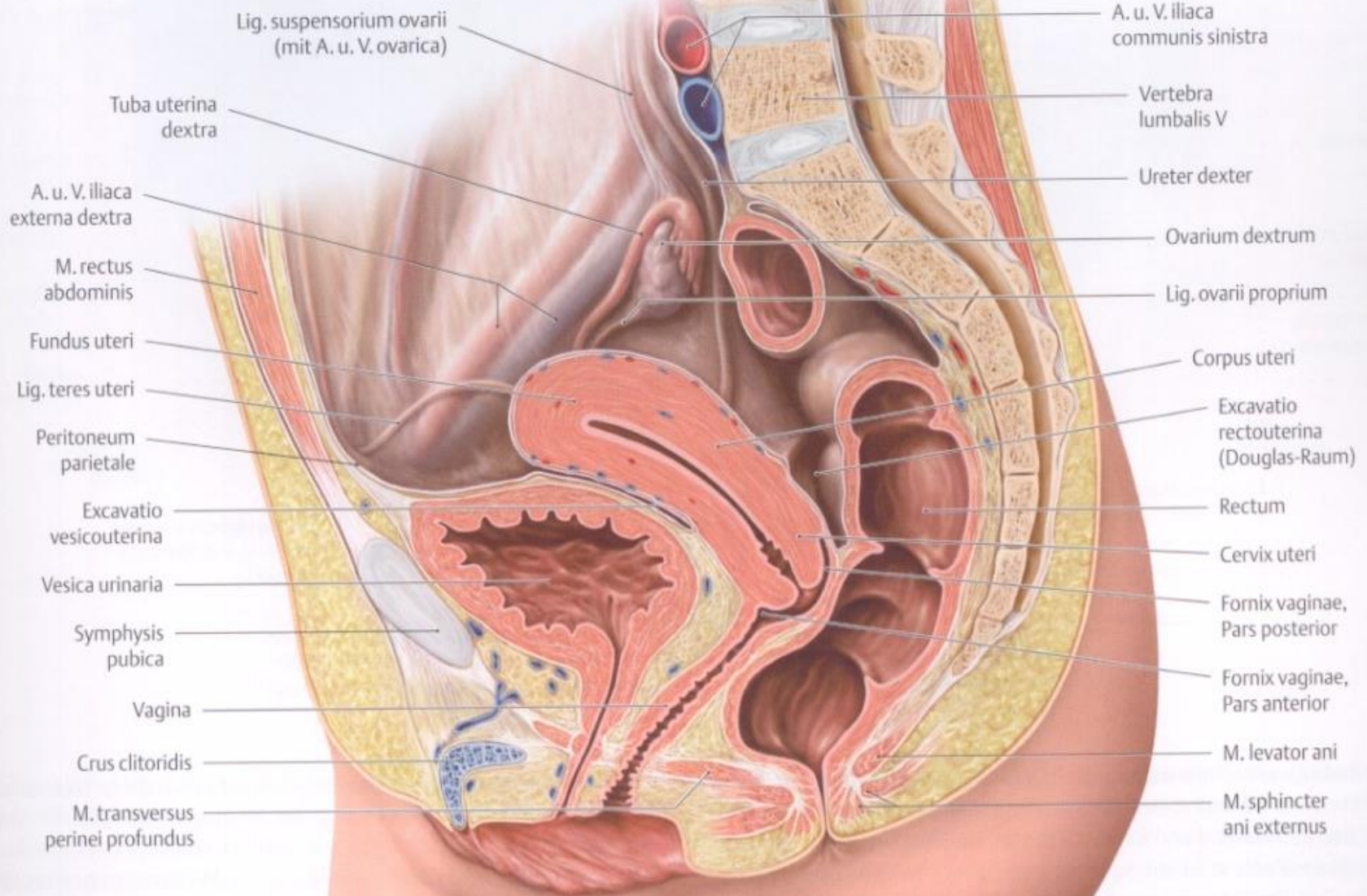


Peritonealbedeckung der Vesica urinaria      Symphysis pubica      Vesica urinaria      R. superior ossis pubis

Peritonealbedeckung des Uterus  
 Peritoneum parietale  
 Lig. teres uteri  
 Lig. ovarii proprium  
 Tuba uterina  
 Meso-salpinx  
 Lig. latum uteri  
 Ovar  
 Ureter (retro-peritoneal)  
 Plica rectouterina

Uterus  
 Lig. inguinale  
 A. umbilicalis, Pars occlusa  
 A. obturatoria  
 Aa. vesicales superiores  
 A. u. V. iliaca externa  
 A. uterina  
 A. umbilicalis, Pars patens  
 A. vesicalis inferior  
 A. rectalis media  
 Ureter  
 A. u. V. ovarica

Excavatio rectouterina      Plexus hypo-gastricus superior      Rectum      A. iliaca interna      A. iliaca communis

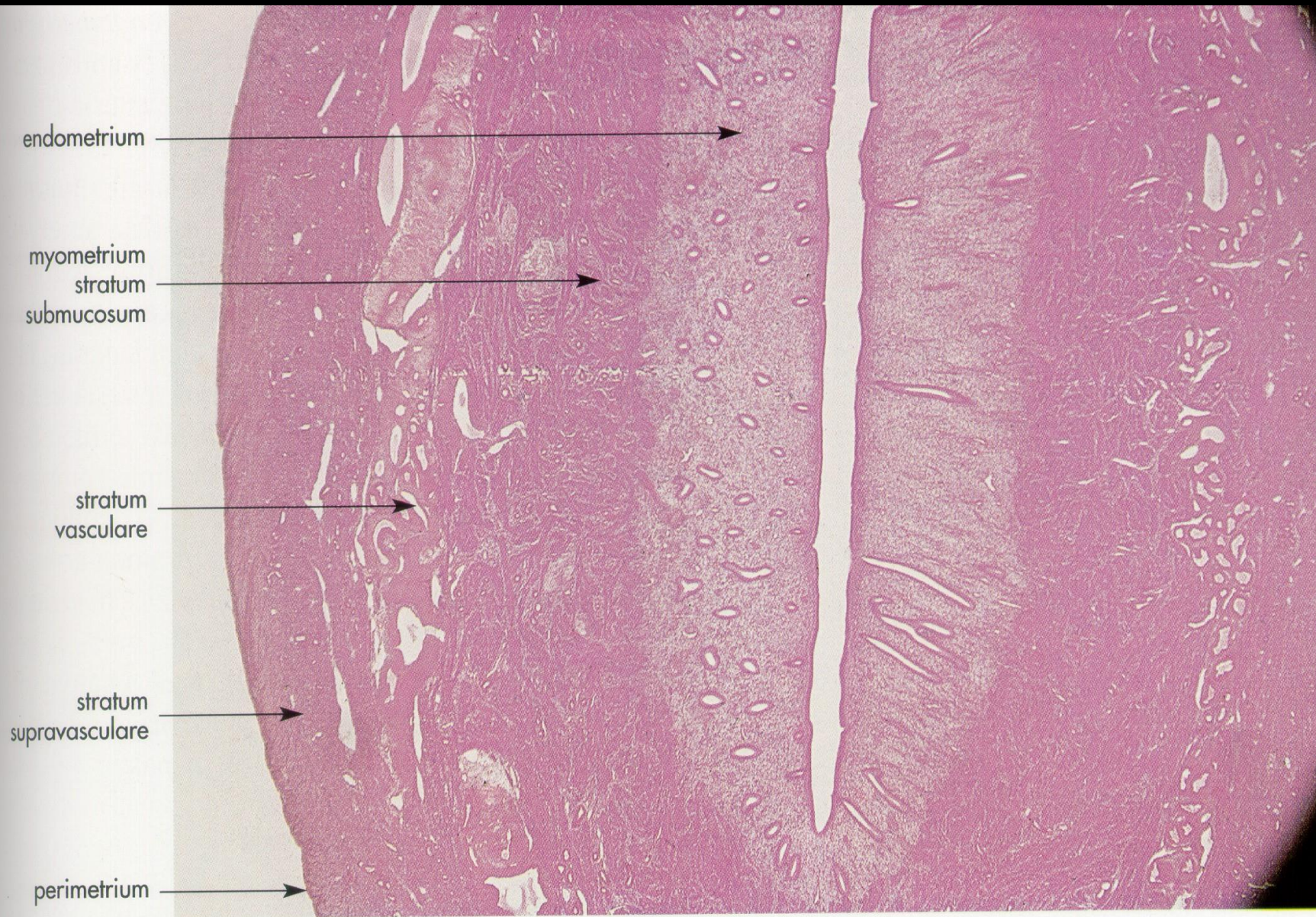




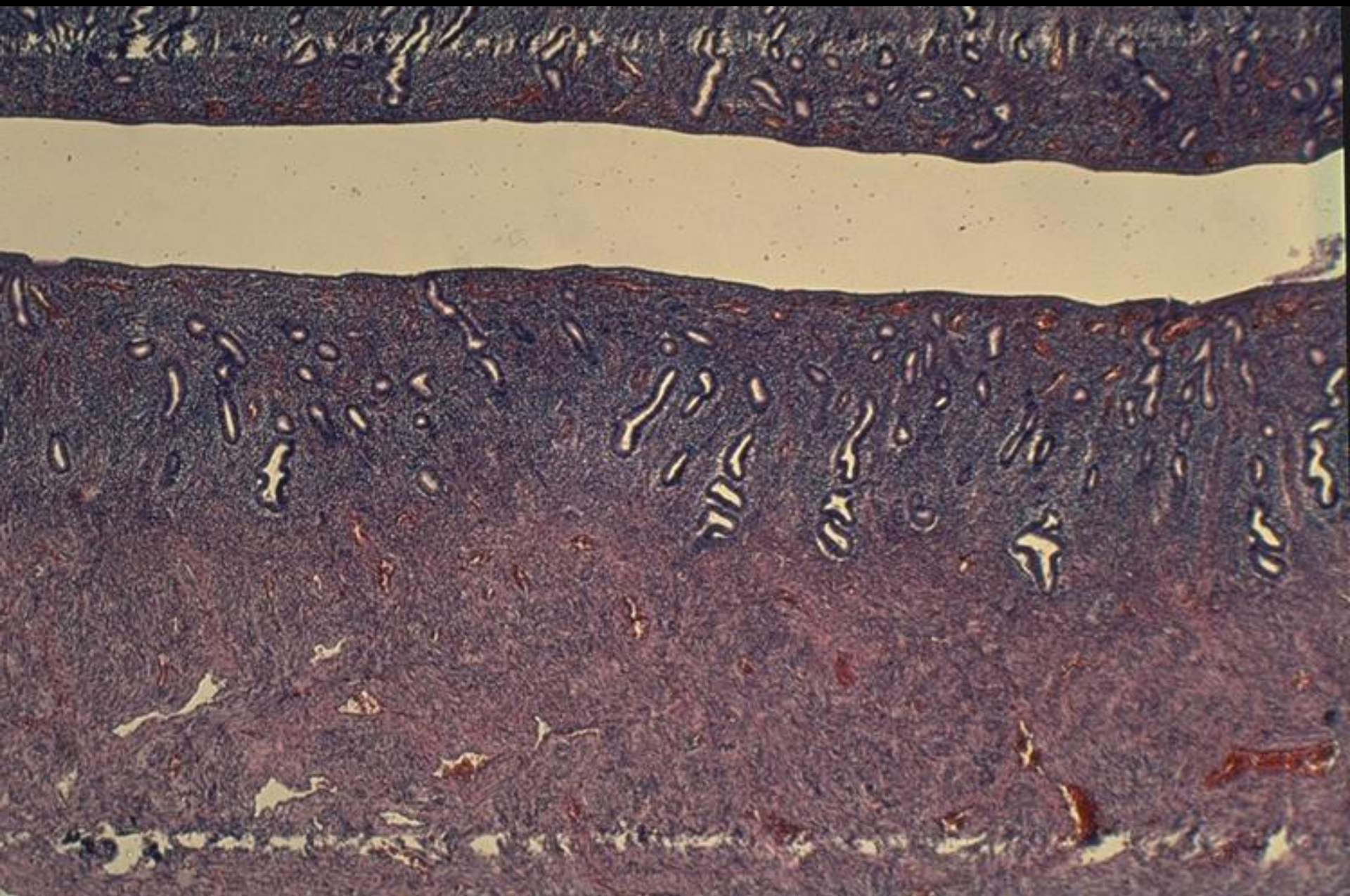
**Nullipara**

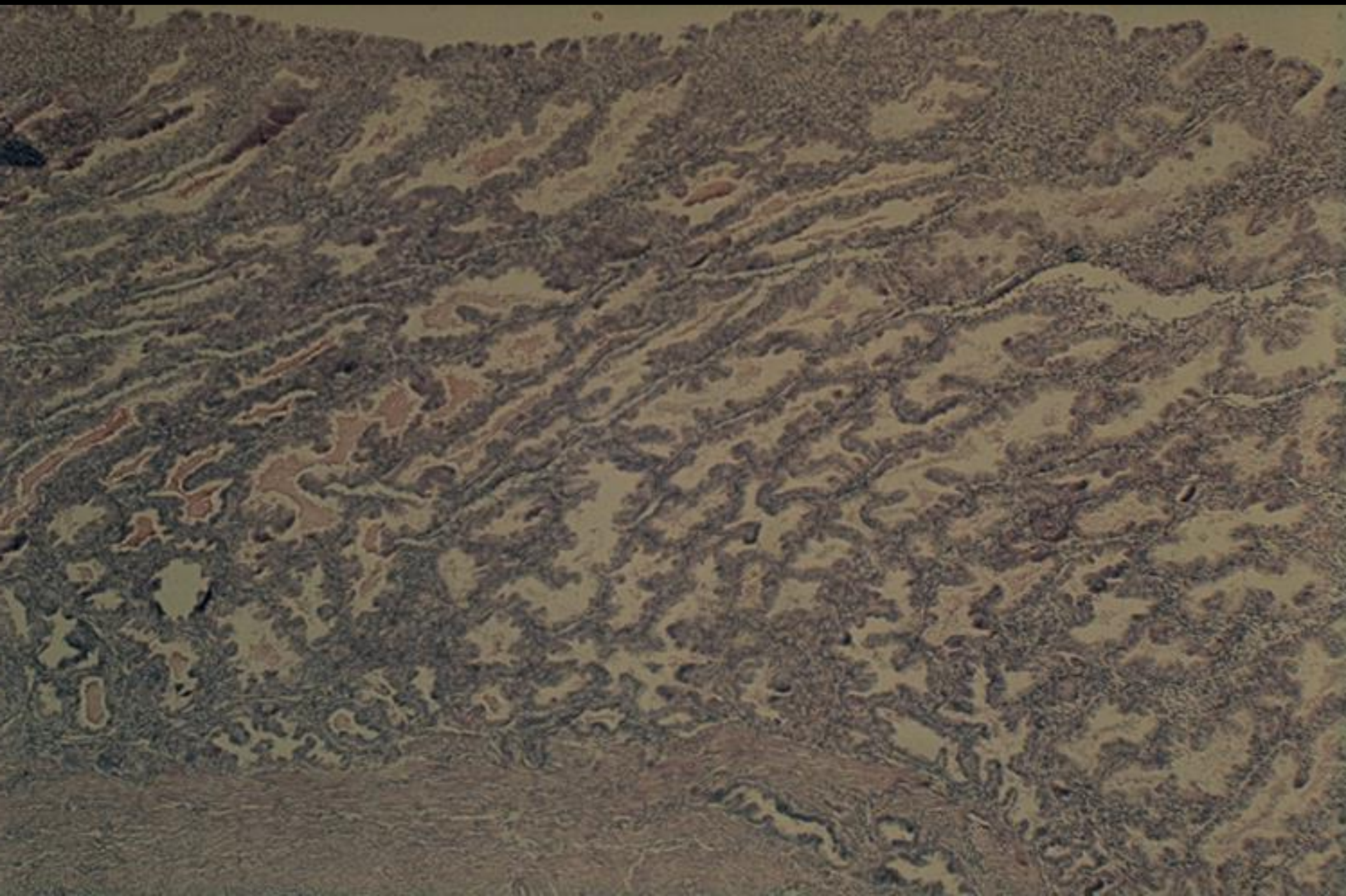


**Multipara**



18-16. ábra. Az uterus falszerkezete, átnézeti nagyítás (HE, 10x).





# Versio et flexio uteri

