

Keilbein (Os sphenoidale)
Siebbein (Os ethmoidale)

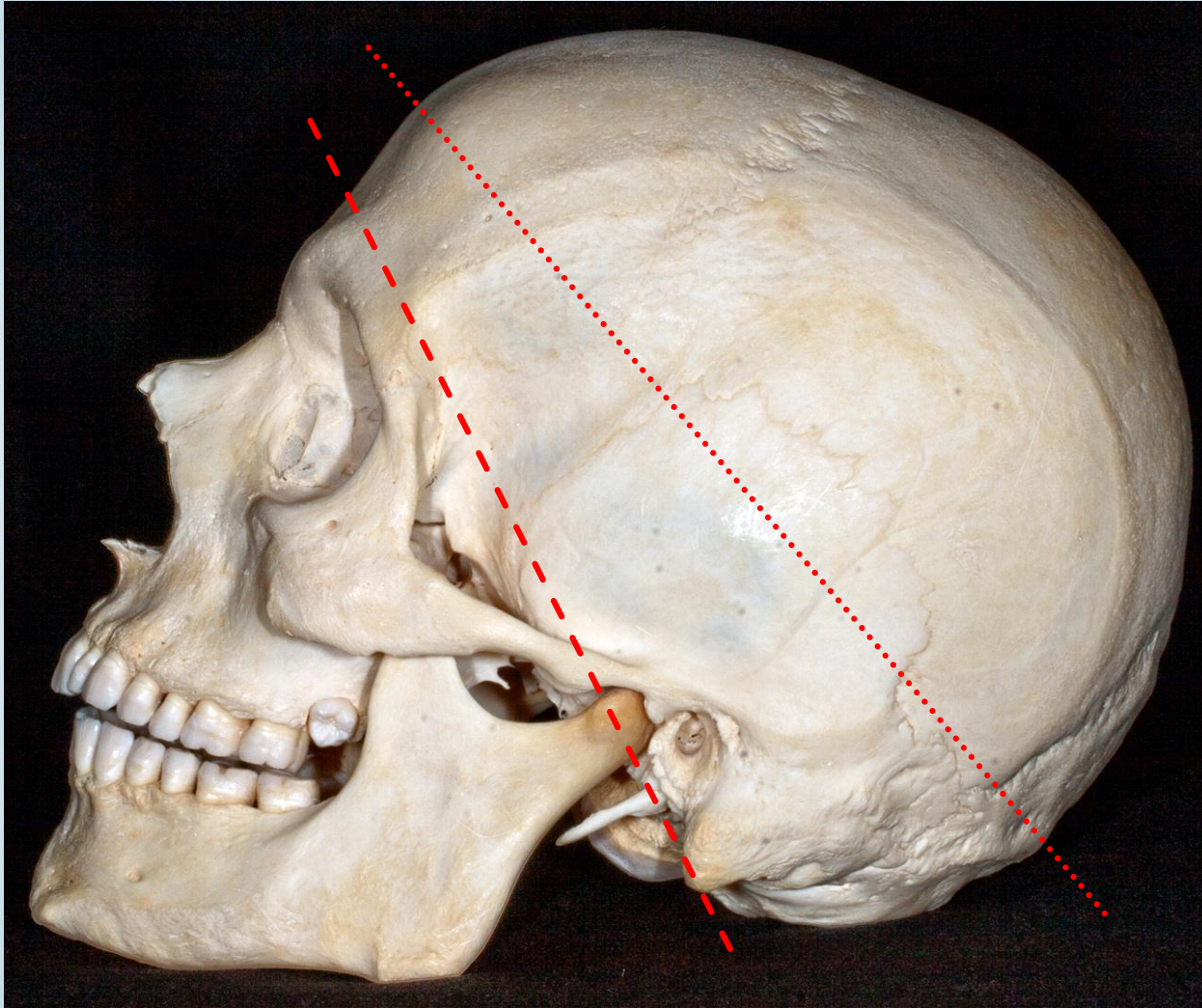
Dr. Gábor Baksa

Semmelweis Universität

Anatomisches, Histologisches und Embryologisches Institut

2017.

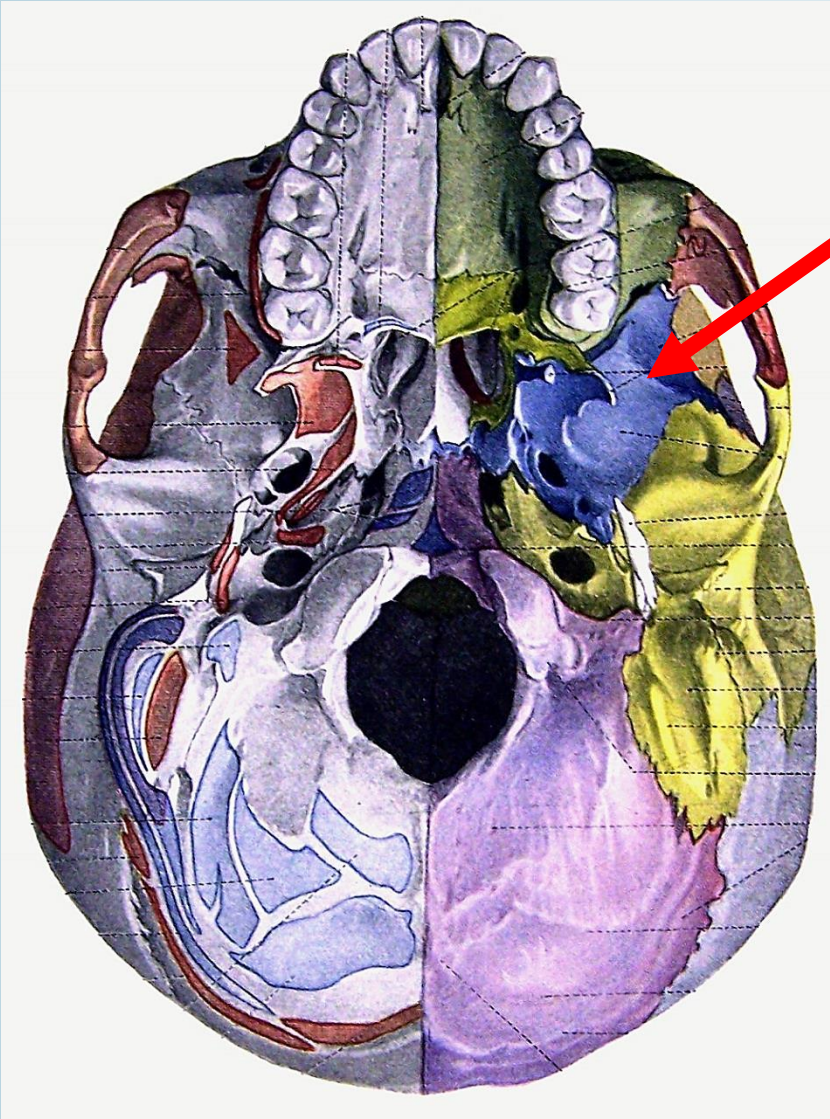
Gliederung des Schädels



- - - Grenze zw. Gesichtsschädel (Viszerokrainum) und Hirnschädel (Neurokranium)
- Abtrennung Schädelkalotte (Kalvaria)

Keilbein

Braus



Teil der äußeren Schädelbasis (mit Corpus, Processus pterygoideus, Ala major)

Keilbein

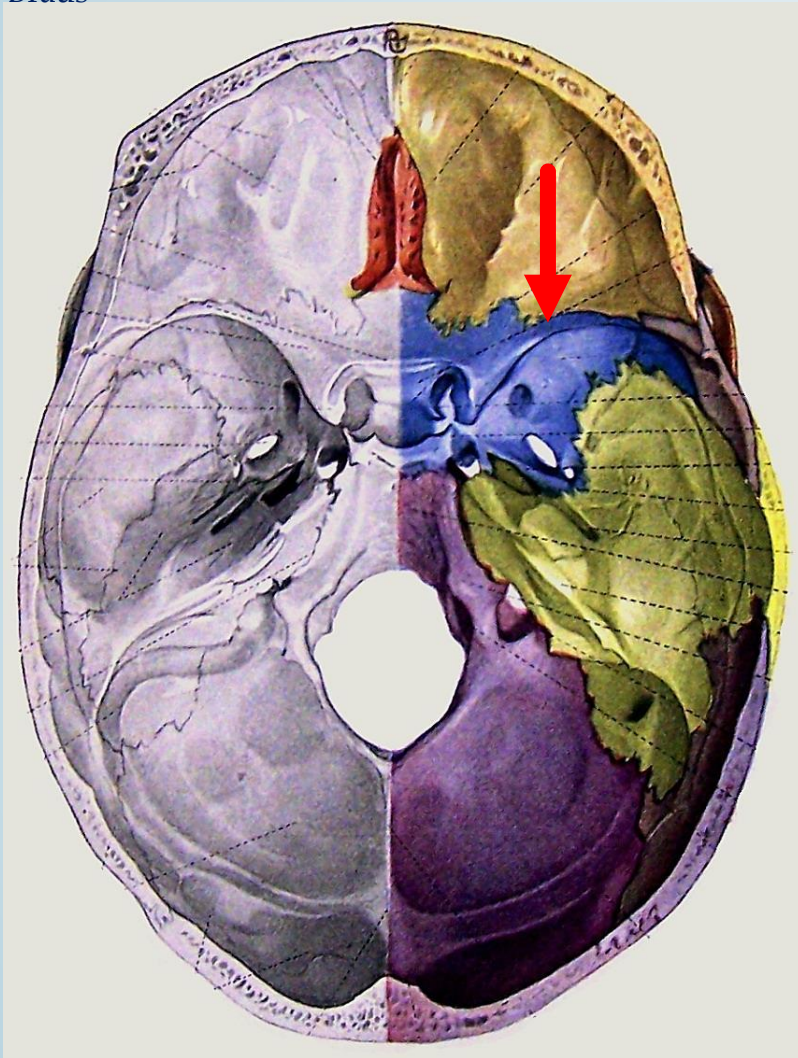
Braus



Teil der Fossa temporalis (Ala major)

Keilbein

Braus



Teil der inneren Schädelbasis (Corpus, Ala minor, Ala major)

Keilbein

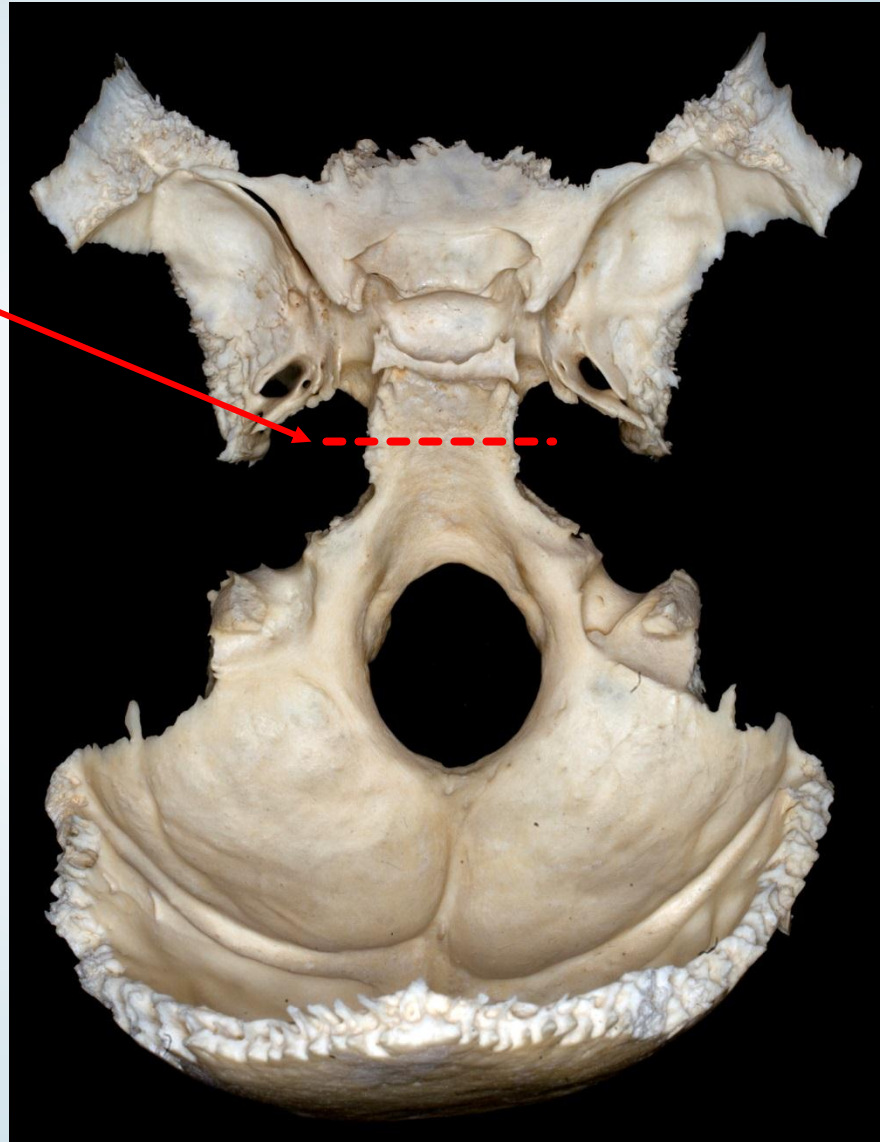
Synchondrosis sphenooccipitalis:

verknöchert am Anfang
des Erwachsenenalters

Über dem ca. 18. Lebensjahr
lassen sich Os occipitale und Os
sphenoidale nicht mehr
voneinander trennen
(Synostose)

Verbindungen zu den weiteren
Knochen:

Suturae, die mit der Zeit
auch oft verknöchern



Keilbein

www.hrlfg.eoldal.hu



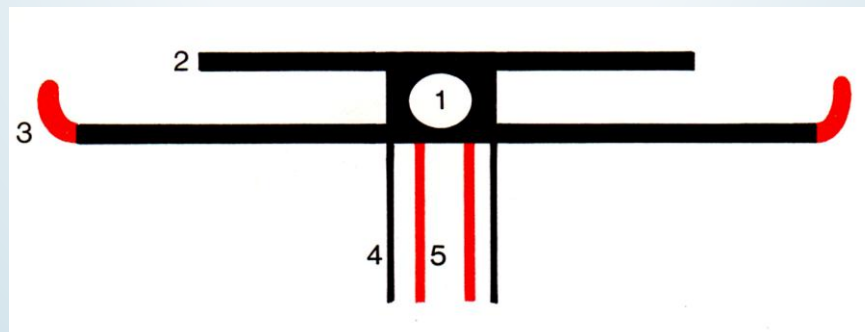
Os sphecoideum ~ Wespe ~ Os vespiforme

Os sphenoidale = keilförmig

Os cuneiforme, alatum, pterygoideum, polymorphon, carinae, colatorii, paxillare



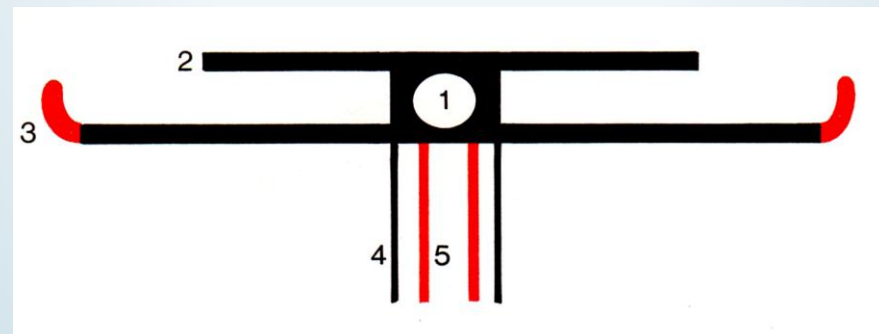
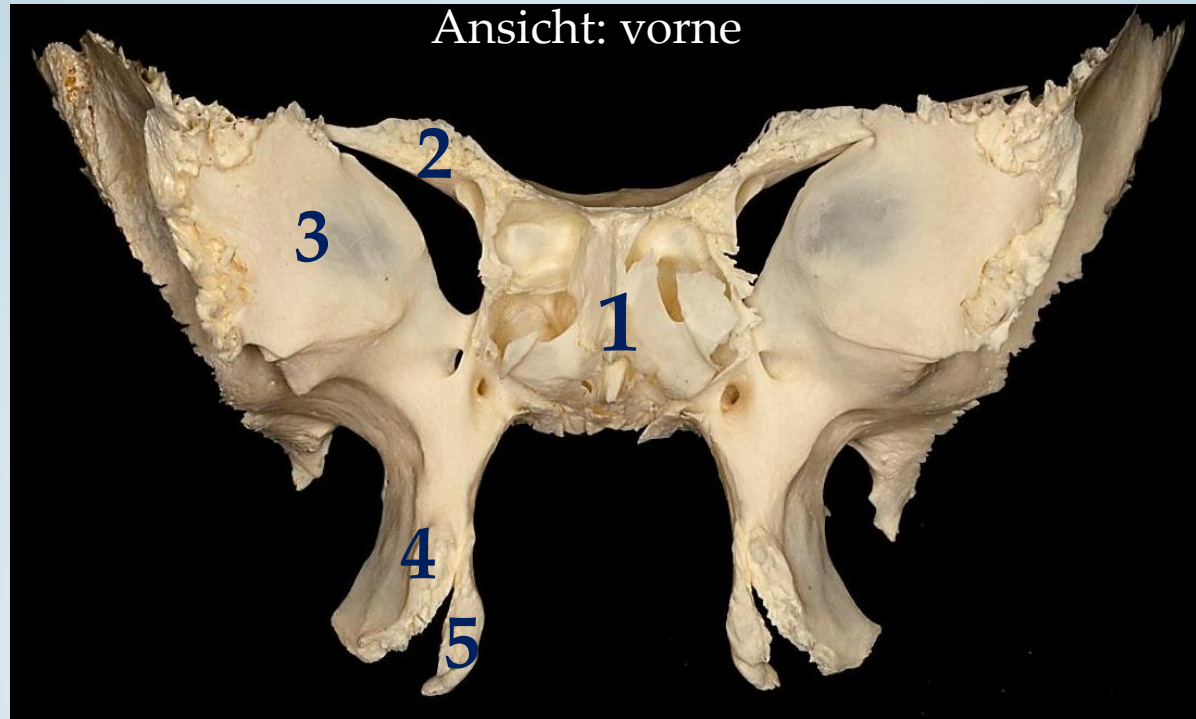
fotó: Semmelweis Egyetem ©



Faller

- 1 Sinus sphenoidalis
- 2 Ala minor ossis sphenoidalis
- 3 Ala major ossis sphenoidalis

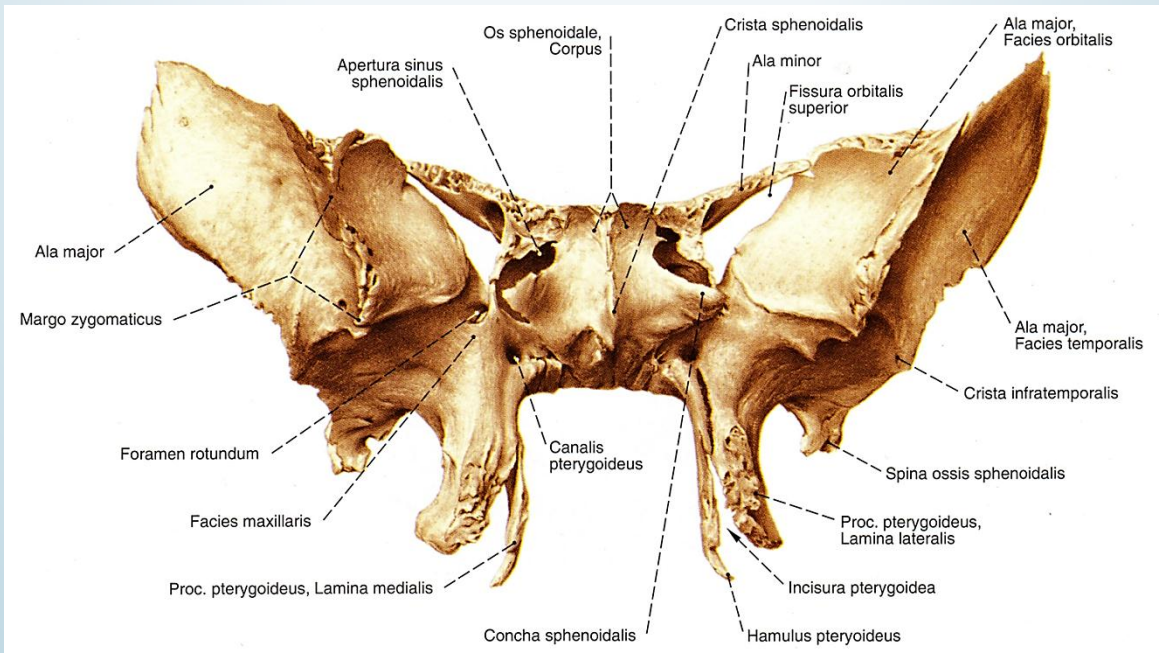
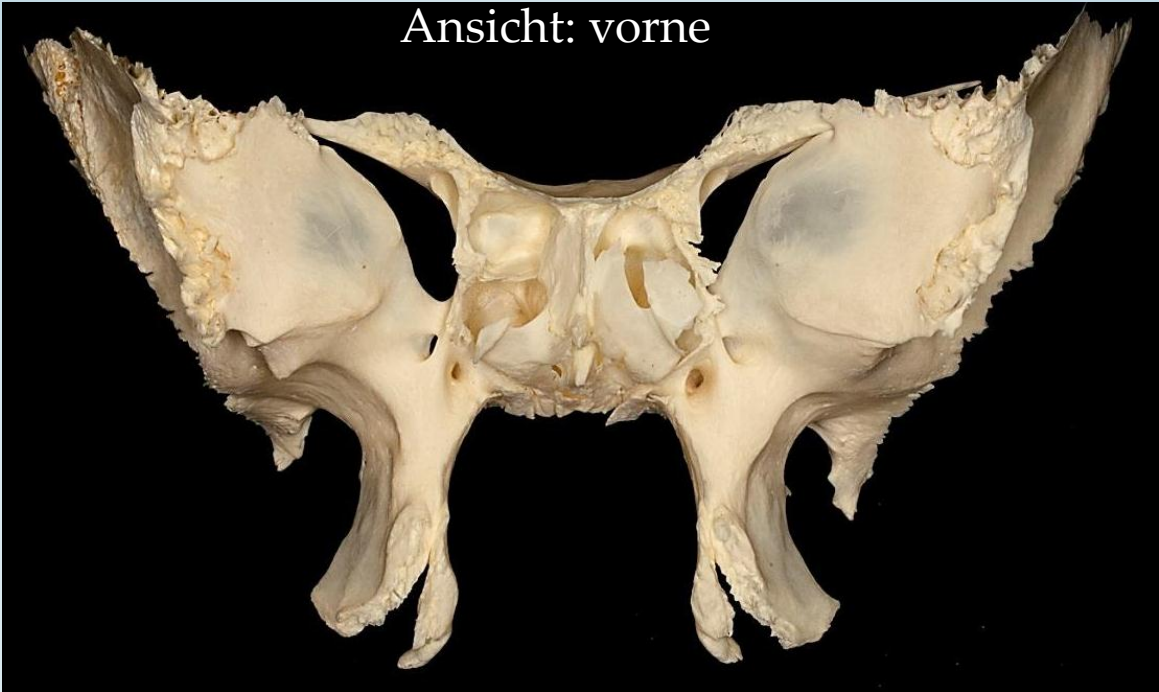
- 4 Lamina lateralis processus pterygoidei
- 5 Lamina medialis processus pterygoidei

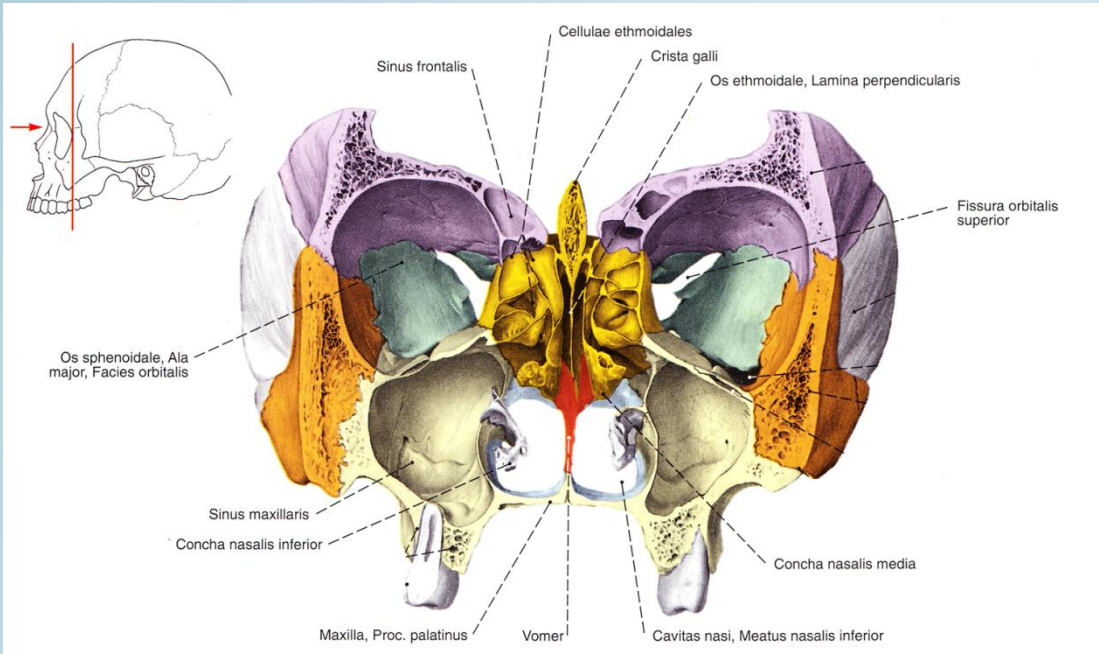


- 1 Sinus sphenoidalis
- 2 Ala minor ossis sphenoidalis
- 3 Ala major ossis sphenoidalis

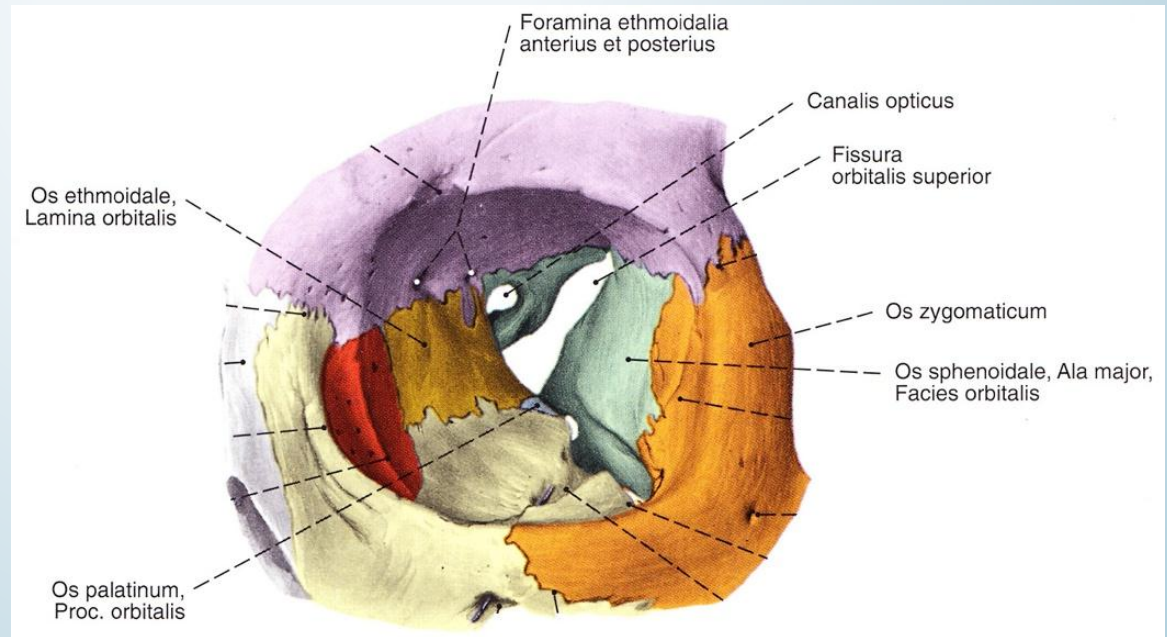
- 4 Lamina lateralis processus pterygoidei
- 5 Lamina medialis processus pterygoidei

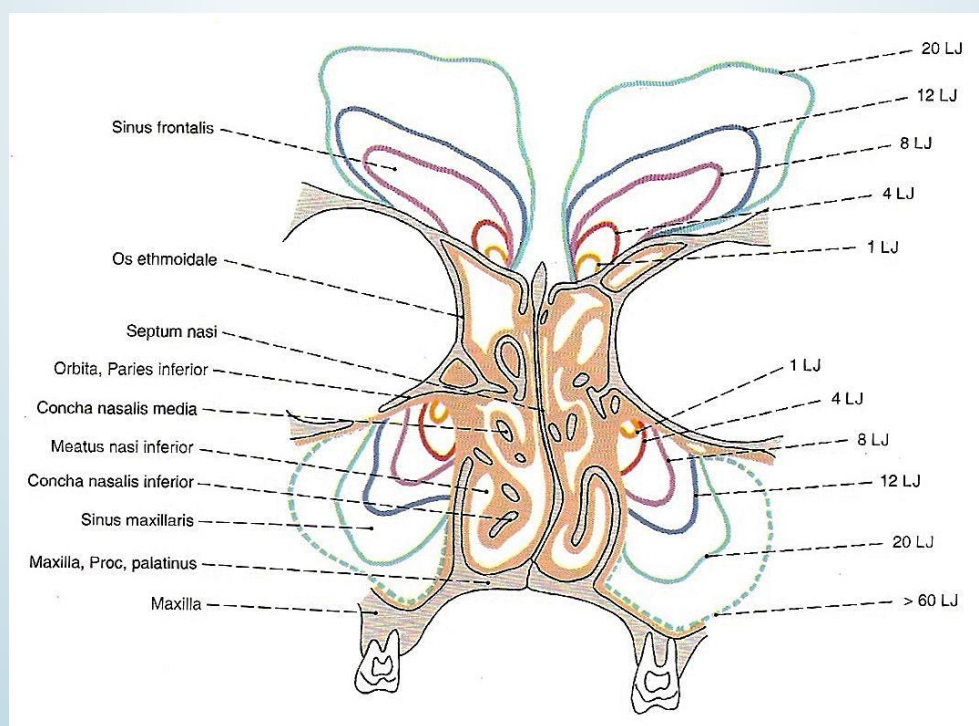
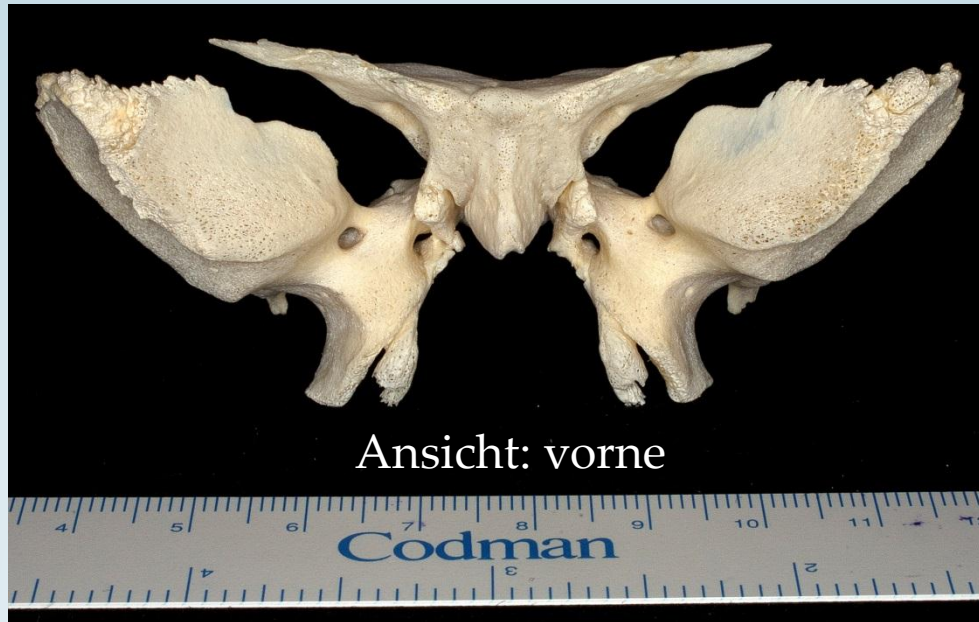
Ansicht: vorne



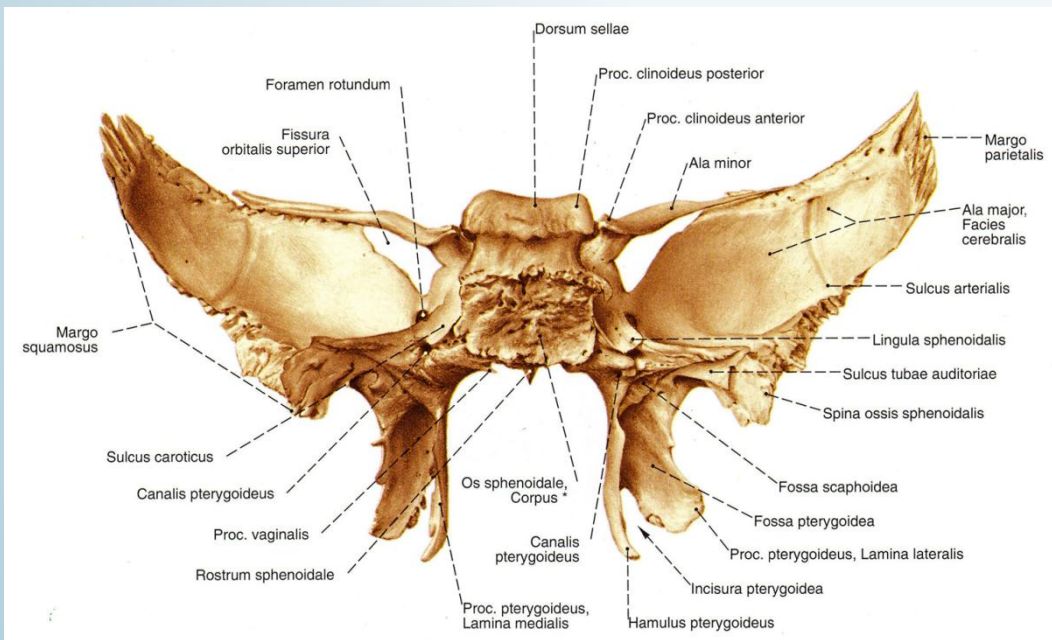


Bildung der hinteren und lateralen Wandstrukturen bzw. Öffnungen (Verbindungen) der Augenhöhle





Ansicht: hinten



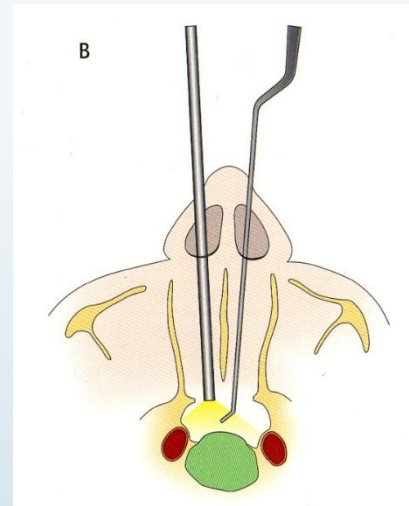
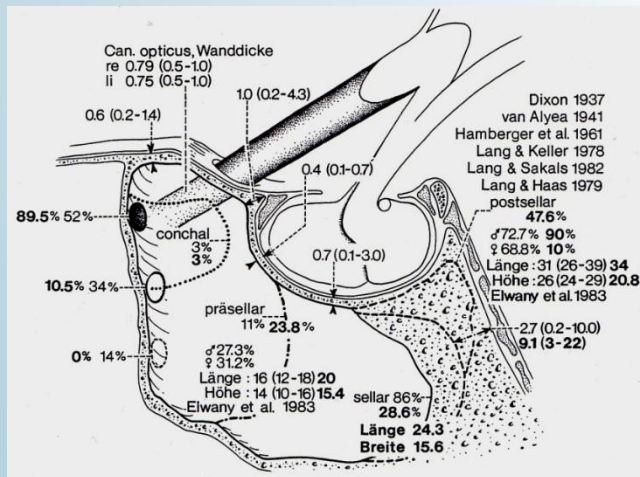
Keilbeinhöhle - Sinus sphenoidalis; Türkensattel - Sella turcica

Eördögh



Aesculap – B Braun

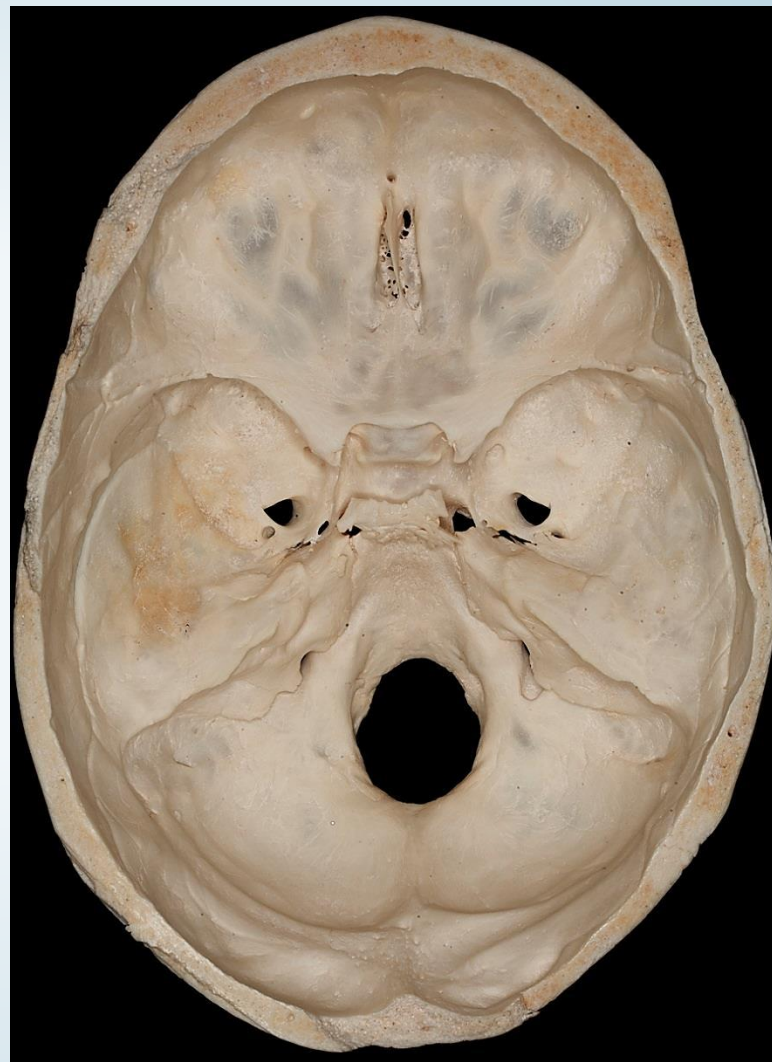
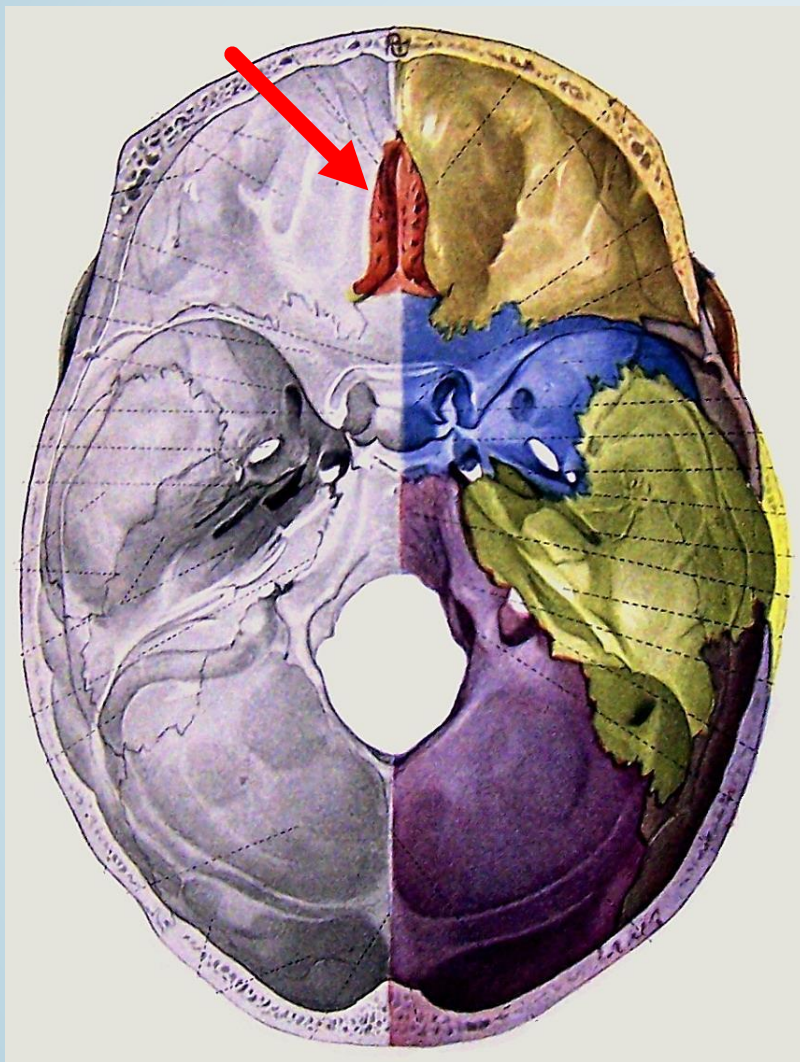
www.commonswiki.org



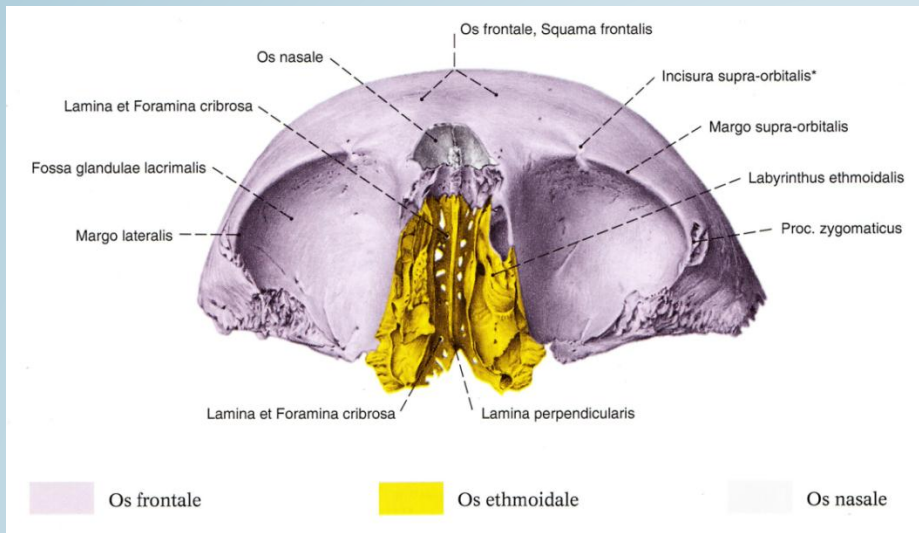
Lang

www.mozaweb.hu

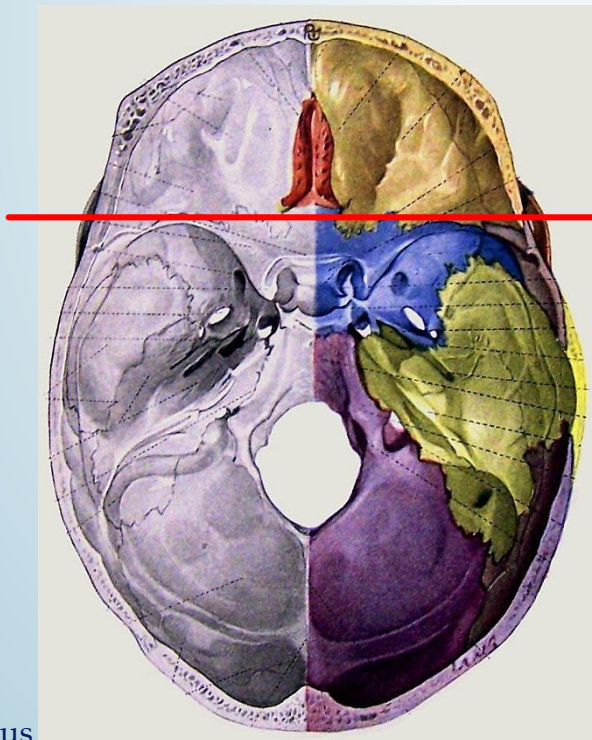
Siebbein - Os ethmoidale



Braus

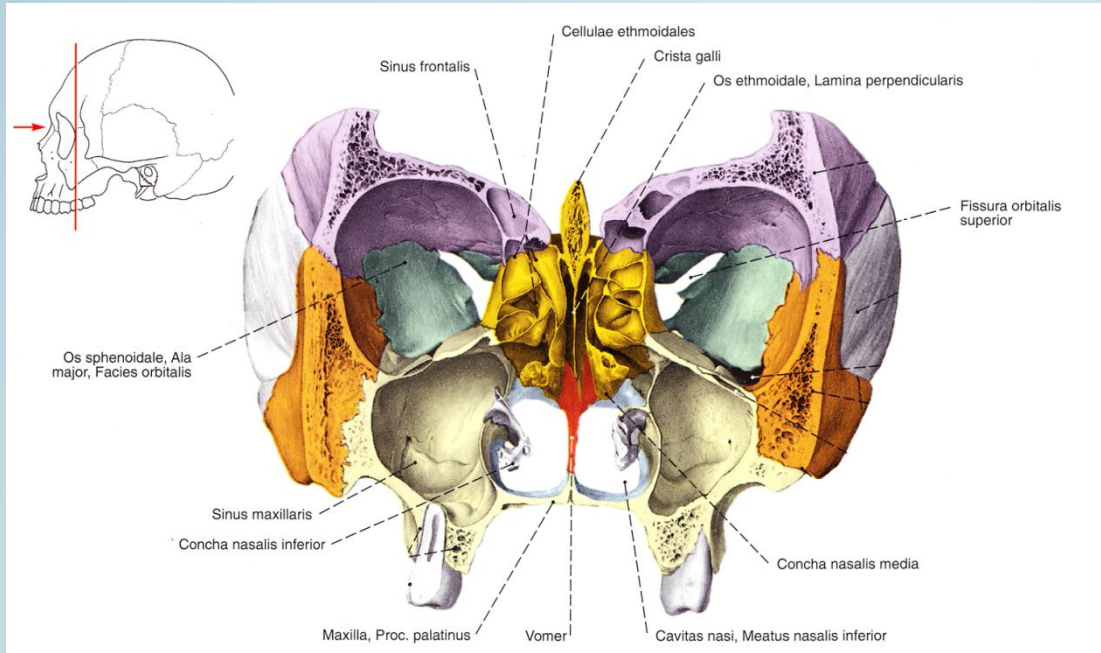


Sobotta

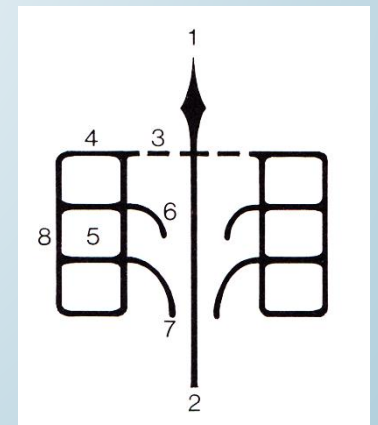


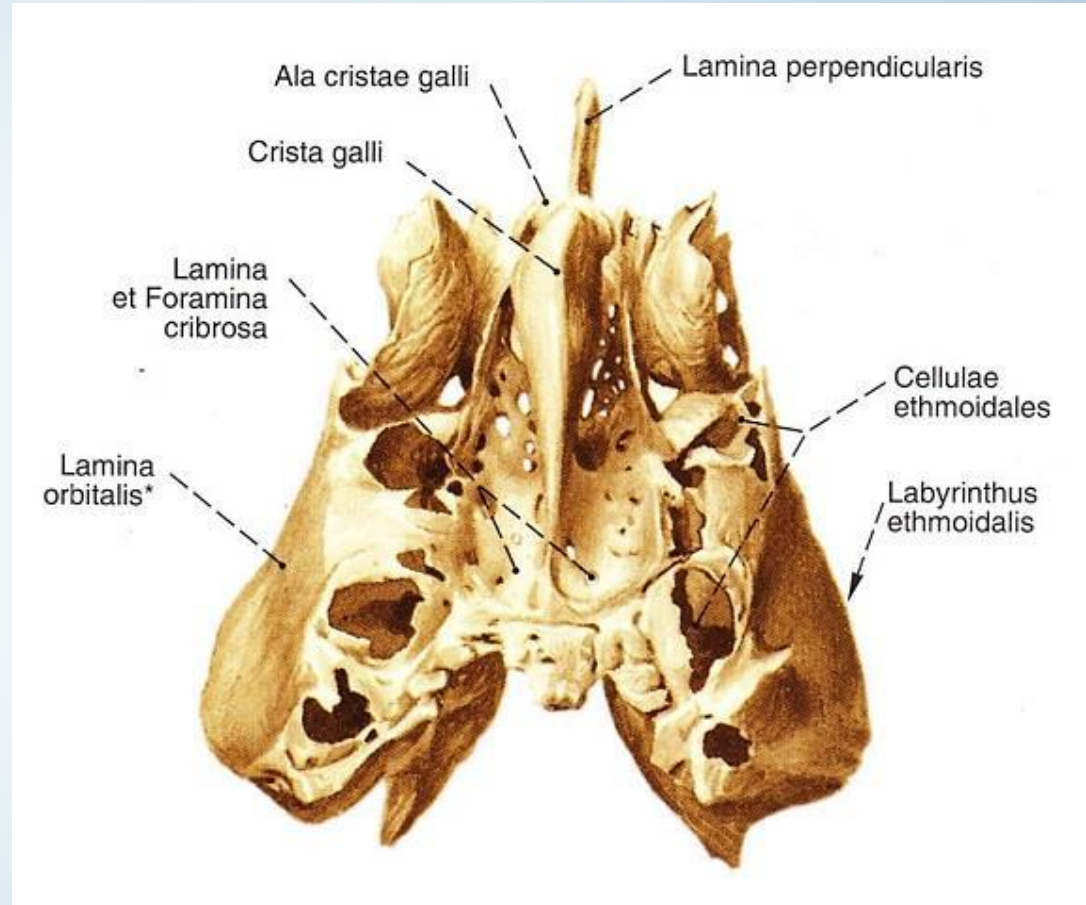
Braus

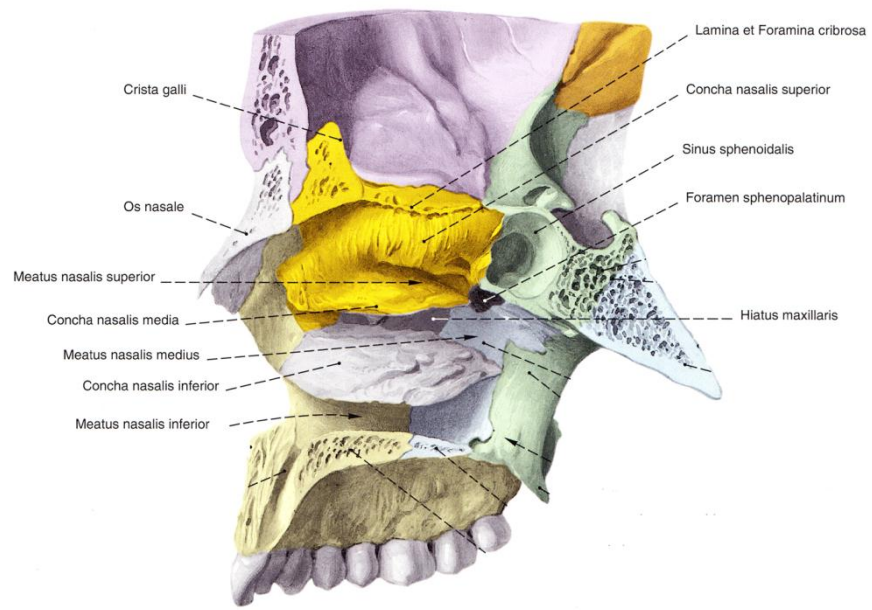




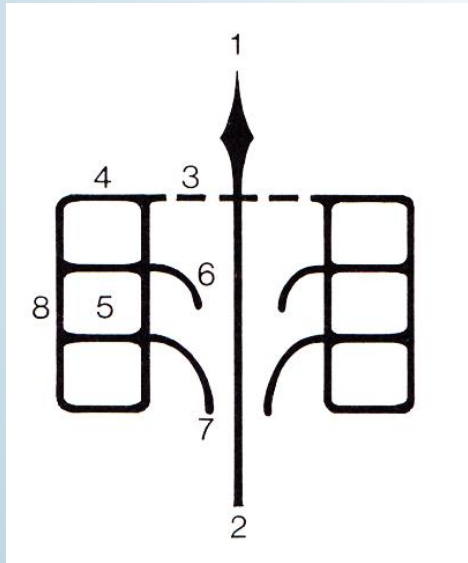
- 1 Crista galli
- 2 Lamina perpendicularis
- 3 Lamina cribrosa
- 4 Labyrinthus ethmoidalis
- 5 Cellulae ethmoidales
- 6 Concha nasalis superior
- 7 Concha nasalis media
- 8 Lamina orbitalis / papyracea







Sobotta

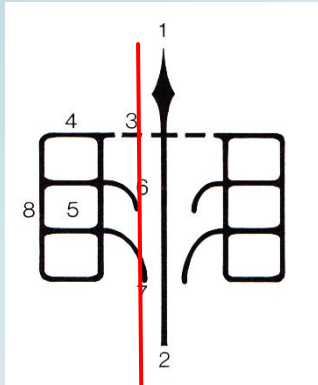


Faller



6 Concha nasi superior
 7 Concha nasi media

Faller

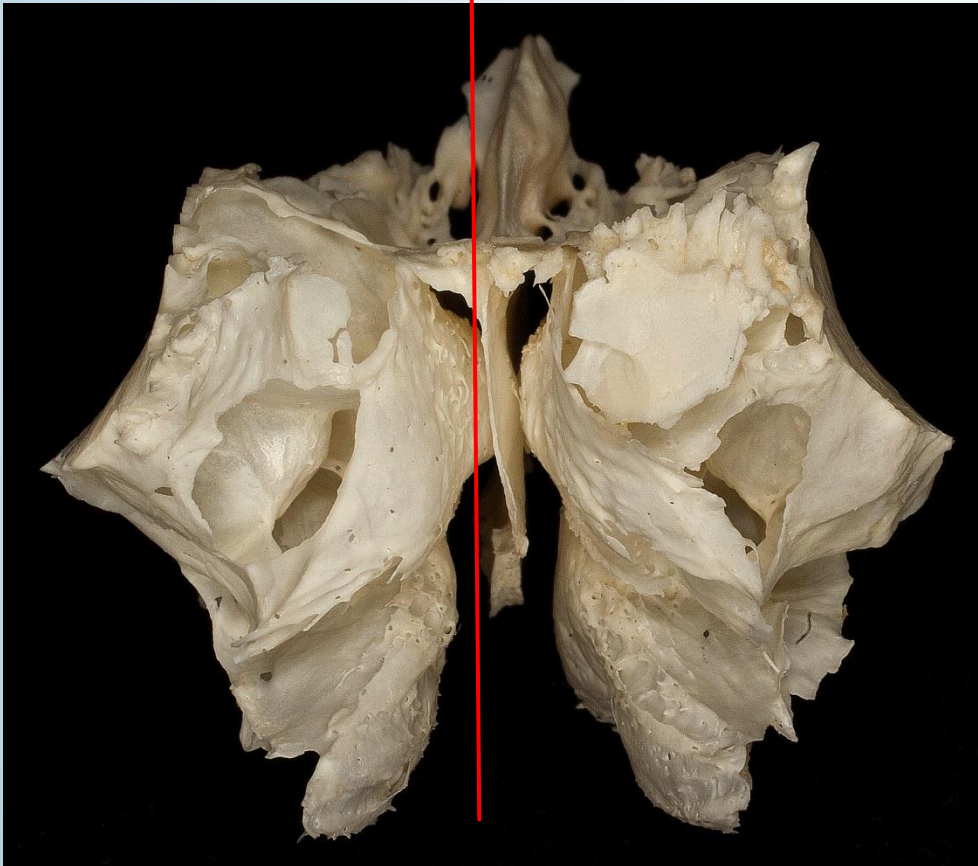


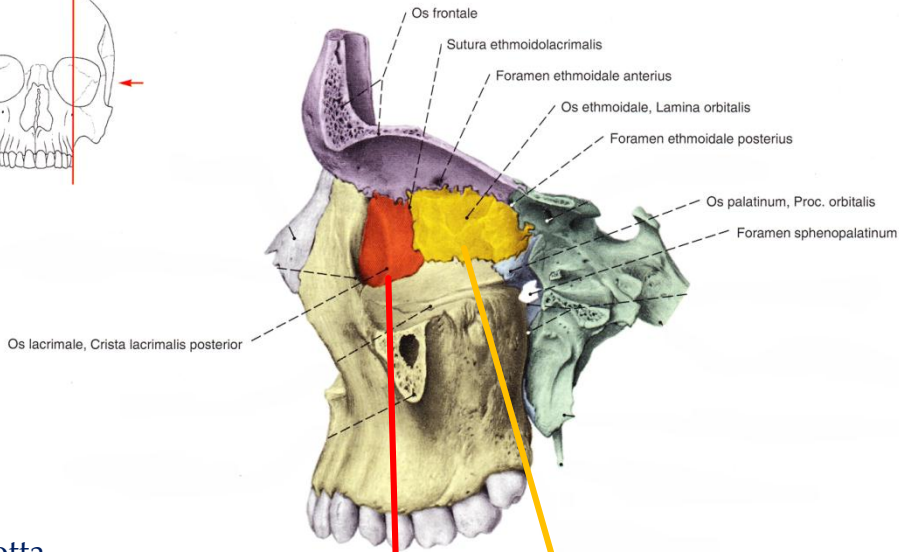
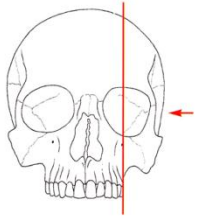
Siebbeinzellen: insg. ca. 30 (=Labyrinthus ethmoidalis)

eins der Nasennebenhöhlen

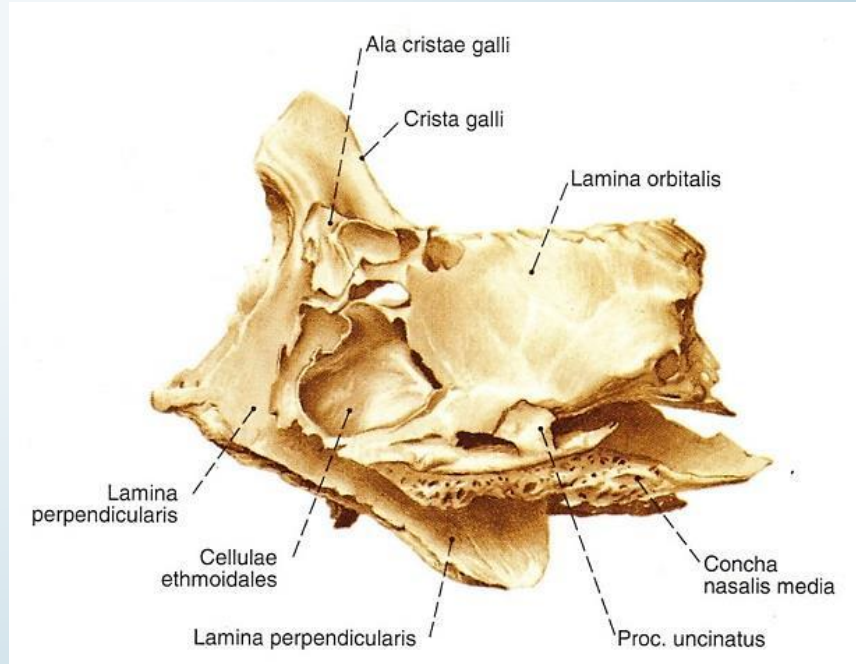
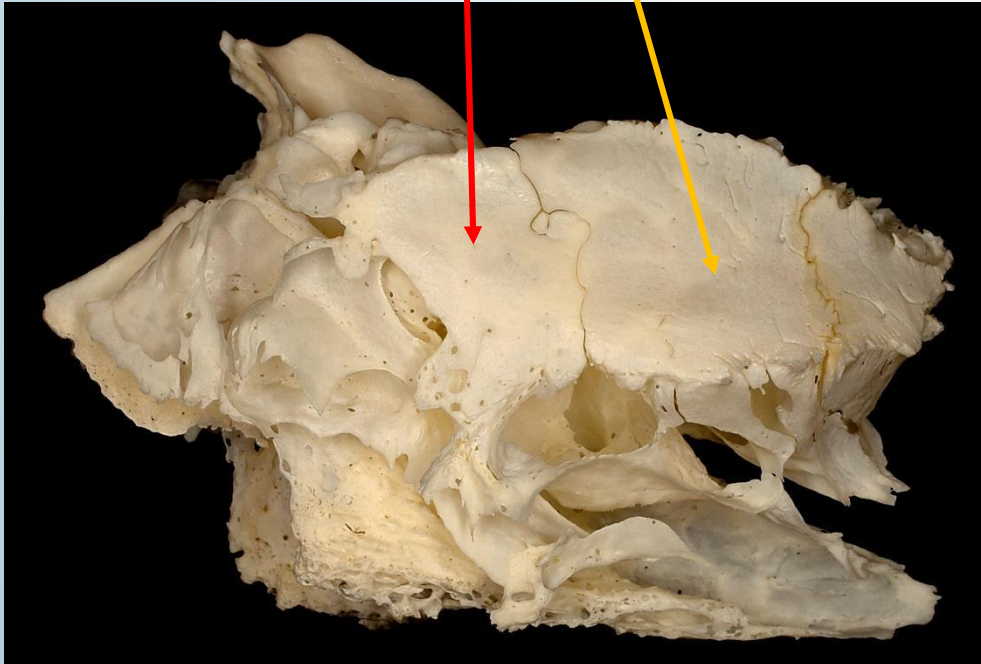
Grenzstrukturen zw. Augenhöhle bzw. Nasenhöhle

Entzündung: mögliche Komplikationen in der Augenhöhle durch dünne Lamina papyracea



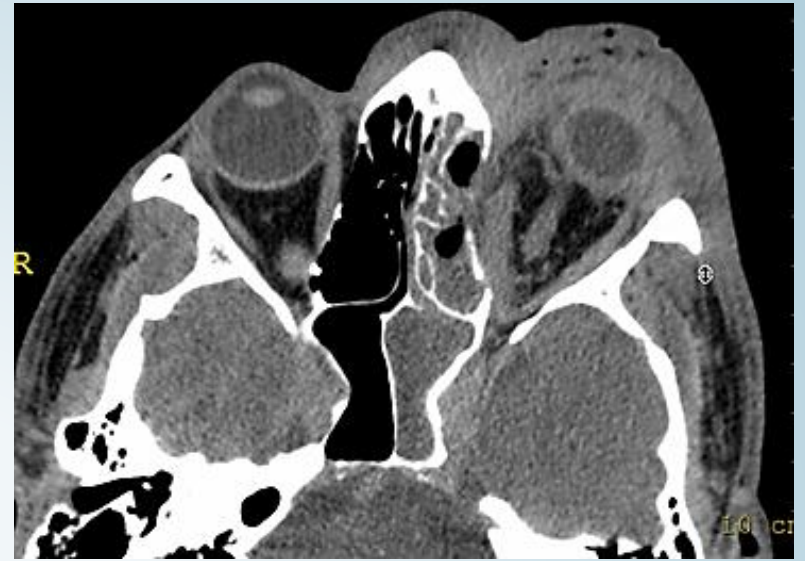
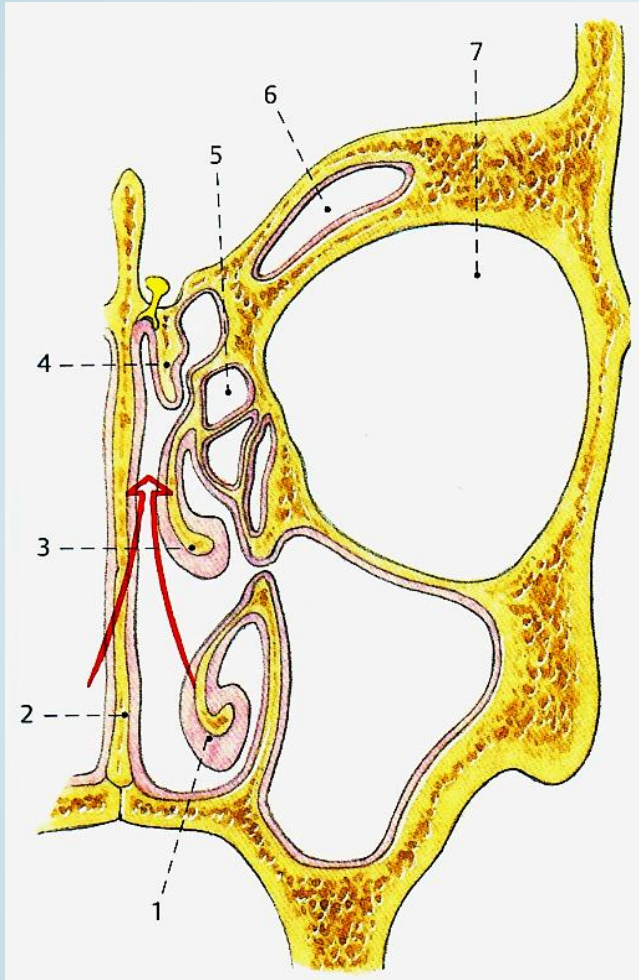


Sobotta



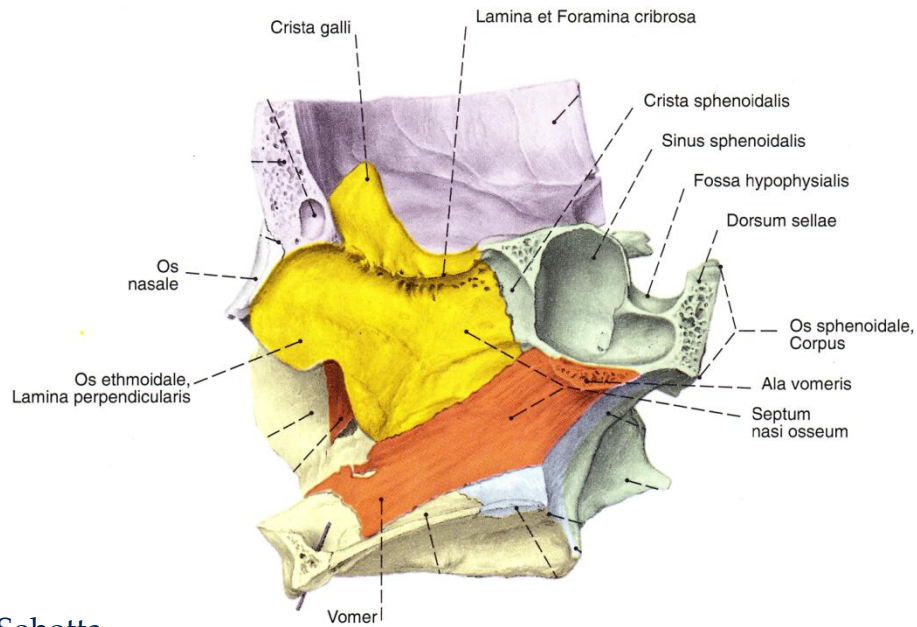
Sobotta

Thumfart

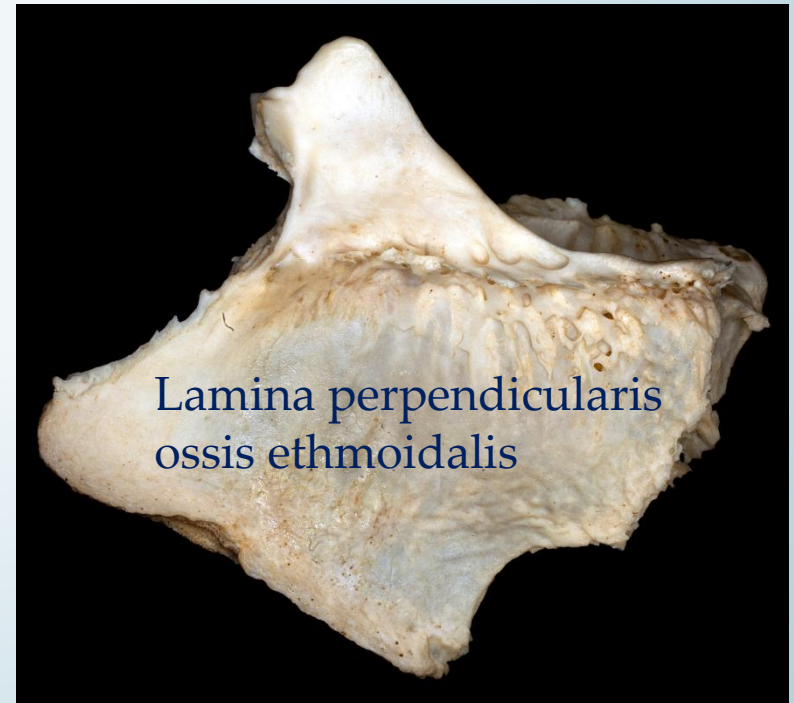
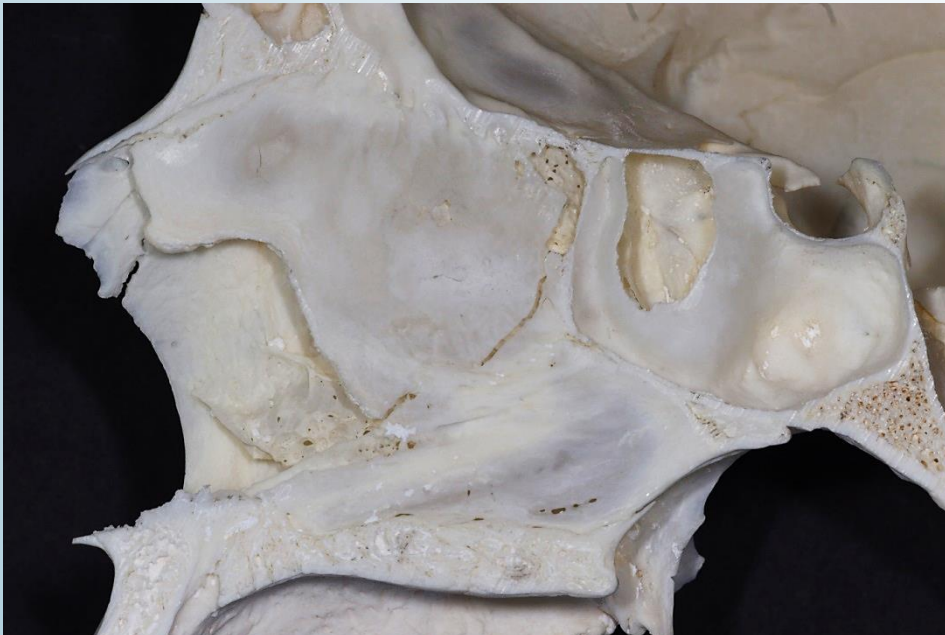
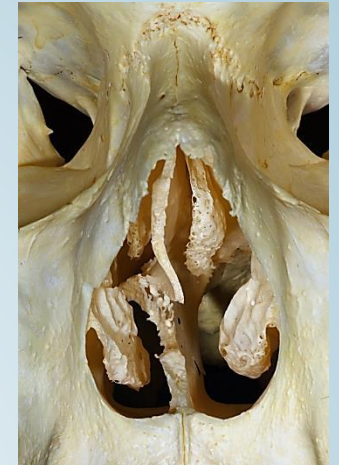


aus der Vorlesung von Hrn. Dr. Magyar Péter





Sobotta



Literatur

Braus Anatomie des Menschen Band I (Verlag von Julius Springer 1929.)

Faller: Anatomie in Stichworten: Ein Arbeitsbuch für Medizinstudenten und praktische Ärzte (Ferdinand Enke Verlag 1988.)

Sobotta: Az ember anatómiájának atlasza (Urban & Fischer 2000.)

Thumfart: Operative Zugangswege in der HNO-Heilkunde (Thieme 1998.)