


Pető András Institute for Conductive Education and Conductors College

Budapest, Hungary

Comenius - Vienna




1




Pető Institute

College

Conductor training BA
Operates the Practice Institute
Courses





2



Pető Institute College

- **Levels of study:**
- BA (undergraduate conductor training)
- Higher level vocational training (youth support)
- Postgraduate specialist training (conductor helper)
- Further education for Hungarian teachers (60-, 120-hour, accredited)
- Information courses


3



Conductor Training

- **Undergraduate conductor training** (specialisation in pre- or primary school teaching)
- **Input requirements:** certificate of secondary education, aptitude test (physical condition, clear speech, musical aptitude)


4



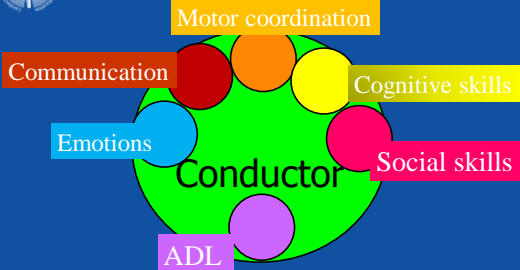
Conductor Training

- **Length of programme:** 8 semesters
- **Level of qualification:** conductor diploma
- **Competence:** Provide conductive education for patients from infancy to adulthood, pre-school or primary school education and instruction of children with motor disabilities in accordance with specialisation.
- **Language:** Hungarian

5



Competences of the conductor



6



Training of the CE specialists 4 years – BA level (240 credits)

Social sciences, pedagogy and psychology: **320 hours**

Adapted medical biological: anatomy, neurology, neurorehabilitation: **210 hours**

Conductive education: **285 hours**

Elective courses: **165 hours**

Conductive practise: **1500 hours**

Differentiated knowledge: **795 hours**

Free choices: **290/1075 hours**

7



Practice Institute

- Place of practical training
- Place for providing conductive education for those who need it

8



Practice Institute - staff

- Conducotrs
- Conductor teachers (school, kindergarten)
- Psychologist
- SLT
- Peadiatrician
- Child neurologist

9



Practice Institute - staff

- Consultation specialists:
 - Orthopaedic spec
 - Orthopaedic technician
 - Ophtalmologist
 - Internal disease specialist
- Hospitals

10



Management of Practice Institute

- Director of Operation
- Deputy director
- Quality manager
- Head of the Units

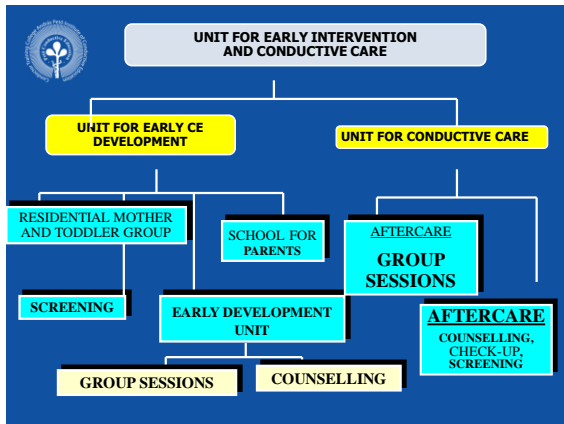
11



Practice Institute

- Early Intervention Unit
- **Practice Conductive Kindergarten**
- **Practice Conductive School**
- Adult Cond. Ed Unit
- Conductive International Unit

12



Conductive Kindergarten

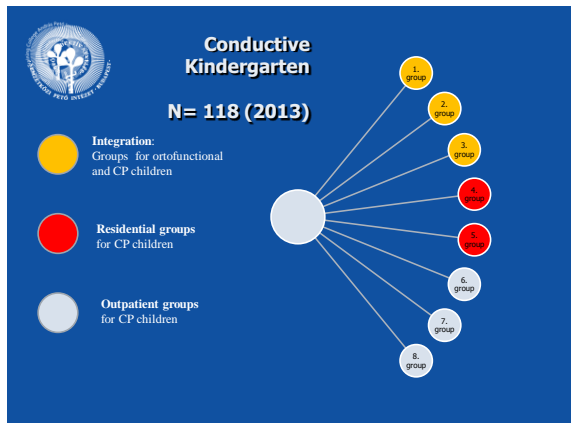
- Head of Kindergarten
- Programme leaders (change on process)

14

Kindergarden - staff

- Conductors
- Conductor kindergarten teacher
- Conductor – specialised on sepc education
- Conductor - Specialised on special development programmes
- SLT
- Psychologist

15



C Kindergarten

- Hungarian Public Education system
- National Assessment Committee
- Children must be prepared for school
- Coordination of the NC and CE
- Parents needs and possibilities

17

Conductive School

- Headmaster
- Deputy headmaster
- Programme leaders

Head teachers of classes

18

School

- Hungarian Public Education system
- National Assessment Committee
- Elementary school level
- Mainstream and spec education
- Conductive education
- Development Characteristics

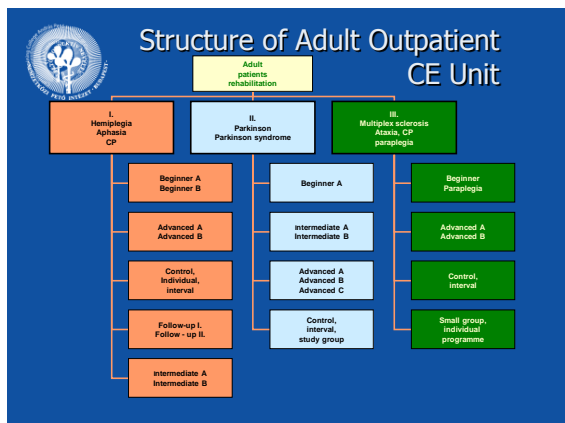
19

Primary, Boarding and Technical Preparatory School N= 149

Special class for integration: „GIVE A CHANCE“

Mainstream education for school aged CP and intact intellect children from grade 1 to 8 (N=91)

Mainstream education for school aged CP children with motor disabilities and hearing difficulties from grade 1 to 8 (N=38)



International CE Unit

1125 Budapest, Kútvölgyi út 6. Phone: +36-1-224-1500

International Unit

- Language based group organisation
 - Russian
 - English
- Age based organisation
 - 2-3 years to 6/8 years
 - 8 years to 18/22 years
- Cognitive development (No academic ed)

23

Thank you for your attention!

224-1500