



Amalgamrestoration

Dr. Zsuzsanna Tóth Ph.D.
Semmelweis Universität, Budapest
Klinik für Zahnerhaltungskunde

Füllungsmaterialien

- Provisorische Füllungsmaterialien
- Unterfüllungsmaterialien
- Definitive Füllungsmaterialien
 - Plastische

Amalgame

Zemente

Cermet Zemente

Kunstharze

Komposite

- Nichtplastische Inlays

Metall

Keramik

Glaskeramik

Direkte Keramik (Cerec)

Goldkeramik

Komposite

Eigenschaften der Amalgamfüllung

1. Volumenstabilität
2. Unlöslichkeit
3. Mechanische Widerstandsfähigkeit
4. Duktilität
5. *Wärme- und Elektrizitätsleitung*
6. *Korrosion*
7. Keine !!! Toxizität – Allergie möglich, aber Rarität
8. Röntgenopazität
9. *Farbe*
10. Amalgam mit F-Gehalt
11. Preis

Kavitätenpräparation für Amalgamfüllungen

1. Statt scharfes Winkels ausgerundete
Verlaufsformen
2. Leichte Konvergenz der vestibulären und oralen
Wände
3. Gingivalrand soll min 1.2mm breit sein
4. Okklusale Breite und Tiefe der Füllung
5. Gingivale Stufentiefe
6. Kavitätenrand cca 90°
7. V-förmige Seitenfissur

Restauration mit Amalgam

- Kavitätenpräparation, Isolation, Reinigung, Trocknen
- Matrizenverwendung
- Verkeilung
- Trituration (Mischen)
- Kondensation
- Kauflächengestaltung
- Politur

Instrumentarium



Matrizen

A low-angle photograph of a modern skyscraper with a grid-like facade, set against a blurred background of a city street. The building is on the left side of the frame, and the rest of the image is a blurred, motion-streaked view of a city street, suggesting a fast-moving camera or a fast-moving subject. The word 'Matrizen' is overlaid in the top right corner.

Matrizen



Matrizen

A low-angle photograph of a modern skyscraper with a grid-like facade, partially obscured by a dark horizontal band across the top of the frame. The building's facade is composed of a dense pattern of windows and structural elements, creating a strong sense of verticality and geometric order. The lighting is dramatic, with strong highlights and deep shadows, emphasizing the building's architectural details. The overall composition is clean and minimalist, focusing on the architectural form and the play of light and shadow.

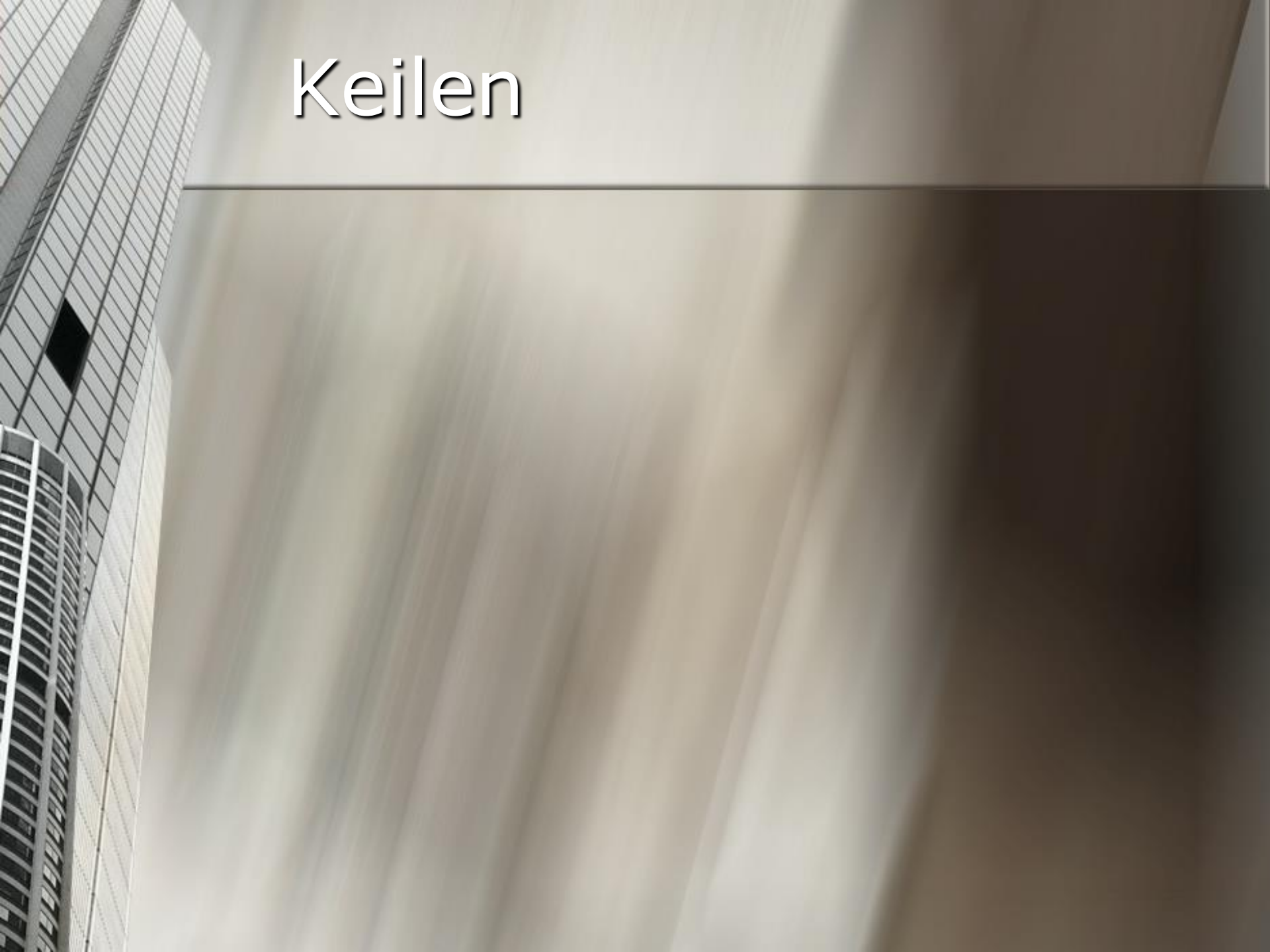
Matrizen

A low-angle photograph of a modern skyscraper with a grid-like facade, set against a blurred background of a city street. The building is on the left side of the frame, and the rest of the image is a blurred, motion-streaked view of a city street.

Matrizenband Adaptation

The image features a low-angle, blurred photograph of a skyscraper with a grid-like facade, serving as a background for the title. The building is on the left side, and the rest of the image is a soft, out-of-focus gradient of light and dark tones.

Keilen



Kupferring



Andere Matrizensysteme

A low-angle, blurred photograph of a skyscraper with a grid-like facade, serving as a background for the title. The building is on the left side of the frame, and the rest of the image is a soft, out-of-focus background of the same building's structure.

Trituration (Mischen)

The background of the slide is a blurred, low-angle photograph of a skyscraper. The building's facade, composed of a grid of windows, is visible on the left side, extending towards the top left corner. The rest of the image is dominated by diagonal motion blur, creating a sense of rapid movement or a fast-paced environment. The color palette is muted, consisting of various shades of gray, beige, and brown.

Amalgammischgerät für die Trituration



Amalgamapplikator/-pistole



Kondensationsinstrumente (Amalgamstopfer)



Amalgamschnitzinstrumente

The background of the slide is a low-angle, blurred photograph of a skyscraper. The building's facade is a grid of windows, and the image is tilted, creating a sense of height and architectural scale. The text 'Amalgamschnitzinstrumente' is overlaid in the upper left quadrant in a white, sans-serif font.

Kauflächengestaltung



Amalgamschnitzinstrumente



Instrumenten für Kauflächengestaltung

The image features a low-angle, upward-looking shot of a modern skyscraper on the left side. The building's facade is composed of a dense grid of windows, with a prominent dark square window visible. The rest of the image is dominated by a background of blurred, diagonal lines, suggesting a sense of rapid movement or a dynamic environment. The overall color palette is muted, consisting of greys, browns, and soft whites.

Politur

